

# ARLEN NESS



## 2018

PARTS & ACCESSORIES  
TO CUSTOMIZE YOUR INDIAN® MOTORCYCLE

# SUSPENSION



SHOWN WITH 21" PROCROSS





### ADJUSTABLE HEIGHT PERFORMANCE SHOCK FOR INDIAN® SCOUT®

- ▶ Adjustable height shocks for Indian® Scout® models, adjustable to 1-1/2"
- ▶ The proper way to lower your Indian® Scout®
- ▶ Improved ride quality and dampening over factory suspension in both factory and lowered ride height
- ▶ Adjustable preload, allowing rider to adjust suspension to their individual weight
- ▶ Sold in pairs
- ▶ Fits Indian® Scout®, Scout® Sixty, Scout® Bobber

#### INDIAN® SCOUT®

I-1057 Adjustable Height Performance Shock



### ADJUSTABLE HEIGHT PERFORMANCE SHOCK FOR INDIAN® CHIEF®

- ▶ The PROPER way to lower your Indian® while improving ride quality.
- ▶ Shock is preset to 310 mm length which lowers the bike 38mm (1-1/2") and spring rate is adjusted for a 200 lb. rider
- ▶ Both shock height and preload are adjustable
- ▶ Height is adjustable from factory height to 1-1/2" lower
- ▶ Preload adjustability allows the rider to set the spring preload to their individual weight
- ▶ Lowered position: Retains geometry similar to factory suspension & drastically improves ride quality even though bike is lowered.
- ▶ Fits Indian® Chief®, Chieftain®, Roadmaster®, Springfield®

#### INDIAN® CHIEF®

I-1055 Adjustable Height Performance Shock



# BODYWORK



SHOWN WITH 21" FLARE 5

**21" COMPOSIT FRONT FENDER**

- ▶ Our 21" fender for Indian combines clean wrapper styling with Indian's® classic flowing lines to properly dress up your 21" custom wheels
- ▶ Fender design makes sure your new upgraded wheels are exposed for everyone to see and not hidden like the factory fender
- ▶ Allows use of factory front fender light
- ▶ Constructed from composite materials made with computer controlled processes for the perfect fit every time and the best quality available
- ▶ Designed to fit 14-up Indian Chief®, Chieftain®, RoadMaster® & Springfield

I-1150 21" Front fender

**NOTE:** Please check fitment and finish prior to painting. Arlen Ness will not be responsible for any damage sustained to paint jobs.



**21" STEEL RAPPER & PRO SHORT FRONT FENDERS**

- ▶ Stamped from one piece of 14-gauge steel that provides a smooth as glass finish
- ▶ Rapper curvaceous full-length design wraps your tire to perfection
- ▶ Pro Short fenders feature a performance inspired design for an aggressive look
- ▶ Direct bolt-on chrome billet bracketry is included
- ▶ 21" fenders measure 5.90" wide and accept all 120/70-21" tires
- ▶ All fenders made in the USA
- ▶ Fitment: 14-up Chief/Chieftan/Roadmaster/Springfield

I-1153 21" Real Steel Rapper

I-1151 21" Pro Short



I-1153

**21" FENDER BRACKET KITS FOR CHIEFTAIN® LIMITED & SCOUT® MODELS**

- ▶ Front fender bracket kits designed to relocate the factory front fender on Chieftain® Limited & Scout® models to the proper position when using a 21" front wheel
- ▶ Constructed from steel and available in chrome or black powder coat finish
- ▶ Each kit includes everything you need to relocate the factory front fender
- ▶ Scout fender bracket fitment: 14-up Scout/Scout Sixty models
- ▶ Limited & Chieftan bracket fitment: 17-up Chieftain Limited & 18-up Chieftan & Springfield models equipped w/ factory 19" front wheels & open front fender

I-2904 Limited, Black

I-2905 Limited, Chrome

I-2903 Scout®, Chrome



I-1151



I-2904



I-2905

**NESS FAIRING FOR INDIAN® SCOUT®**

- ▶ Provides style and wind protection
- ▶ Simple bolt-on installation, no fabrication required
- ▶ Fairing body is constructed from heavy ABS plastic, which is the same material used for OEM saddlebags.
- ▶ Windshield is smoked plexiglass
- ▶ Choose from paintable or gloss black coated ABS finish
- ▶ Fits 15-16 Scout® / Scout® Sixty

I-1300 Gloss Black ABS

I-1302 Paintable

**NOTE:** Please check fitment and finish prior to painting. Arlen Ness will not be responsible for any damage sustained to paint jobs.





## FLARE 5

The FLARE 5 represents the next level in motorcycle wheel design. Sculpted CNC features extend from the axle all the way to the outer edge of the rim lip. Its multi-piece design features a radial forged rim, forged hub covers, hidden cartridge hub and spoke mounted 14" rotors for a combo never before seen in the v-twin aftermarket. FLARE 5 is the first design in the Ness Multi-piece Premium wheel series.

- Precision machined from radial forged 6061-T6 aluminum for maximum road durability
- Structurally tested to meet or exceed DOT, JAS and TUV international load ratings
- Hidden hub design features a single piece cartridge type hub that includes both pre-set bearings
- Forged hub covers are specially designed to bring full 3D styling from the bearing in the hub to the outer edge of the rim lip
- Matching floating performance front rotors are available

### HIDDEN CARTRIDGE HUB FEATURES

- These billet aluminum wheel hub kits are designed to work exclusively with Arlen Ness forged aluminum rims
- Cartridge design hub features both wheel bearings pre-set in one hub for optimum radial and lateral runout accuracy
- Lightweight design provides form and function all while being hidden from view



SHOWN WITH 21" FLARE 5







SHOWN WITH 21" DRIFT

## DRIFT

Utilizing our proprietary single piece hub and hub cover combination the DRIFT wheel brings directional CNC design from the very center of the rim to the very edge of the lip to set your bike in motion even when its on the kickstand. The DRIFT is the second design in the Ness Multi-piece Premium wheel series.

- Precision machined from radial forged 6061-T6 aluminum for maximum road durability
- Structurally tested to meet or exceed DOT, JAS and TUV international load ratings
- Hidden hub design features a single piece cartridge type hub that includes both pre-set bearings
- Forged hub covers are specially designed to bring full 3D styling from the bearing in the hub to the outer edge of the rim lip
- Matching floating performance rotors are available

## HIDDEN CARTRIDGE HUB FEATURES

- These billet aluminum wheel hub kits are designed to work exclusively with Arlen Ness forged aluminum rims
- Cartridge design hub features both wheel bearings pre-set in one hub for optimum radial and lateral runout accuracy
- Lightweight design provides form and function all while being hidden from view







SHOWN WITH 18" FRONT & REAR 7-VALVE

## 7-VALVE

Clean 7 spoke design levels above the classic mag. Each one of the 7 spokes are tapered and feature sculpted sides with a cut out center for heavy styling that doesn't add weight to the motorcycle. To keep it consistent, we brought the same design philosophy to the rim lip where large pockets have been CNC machined between each in spoke to reduce as much weight as possible while adding bold styling. The 7 Valve looks good on any machine and is our best-priced option in the new wheel lineup.

- Precision machined from radial forged 6061-T6 aluminum for maximum road durability
- Structurally tested to meet or exceed DOT, JAS and TUV international load ratings
- Hidden hub design features a single piece cartridge type hub that includes both pre-set bearings
- Matching floating performance front rotors are available

### HIDDEN CARTRIDGE HUB FEATURES

- These billet aluminum wheel hub kits are designed to work exclusively with Arlen Ness forged aluminum rims
- Cartridge design hub features both wheel bearings pre-set in one hub for optimum radial and lateral runout accuracy
- Lightweight design provides form and function all while being hidden from view





## PROCROSS

Race inspired design with extreme attention to detail. Lightweight yet engineered to perform and handle anything the road wants to throw at you. Although the inspiration came from the racetrack it didn't mean we didn't spend countless hours sculpting each "spoke" to ensure it rode the fine line between race and luxury styling.

- Precision machined from radial forged 6061-T6 aluminum for maximum road durability
- Structurally tested to meet or exceed DOT, JAS and TUV international load ratings
- Hidden hub design features a single piece cartridge type hub that includes both pre-set bearings
- Matching floating performance front rotors are available

### HIDDEN CARTRIDGE HUB FEATURES

- These billet aluminum wheel hub kits are designed to work exclusively with Arlen Ness forged aluminum rims
- Cartridge design hub features both wheel bearings pre-set in one hub for optimum radial and lateral runout accuracy
- Lightweight design provides form and function all while being hidden from view



SHOWN WITH 21" FRONT & 18" REAR PROCROSS





## 7-VALVE & PROCROSS WHEELS

FRONT - 18 x 3.5	7-VALVE, CHROME	7-VALVE, BLACK	PROCROSS, CHROME	PROCROSS, BLACK
2014-18 Chieftain/Roadmaster/ Classic/Vintage/Darkhorse/Springfield (TPMS)	10302-202-7006	10301-202-7006	10102-202-7006	10101-202-7006
2014-18 Chieftain/Roadmaster/Clas- sic/Vintage/Darkhorse/Springfield \\ (No TPMS)	10302-202-7008	10301-202-7008	10102-202-7008	10101-202-7008
2015-18 Scout/Sixty/Bobber	10302-202-7004	10301-202-7004	10102-202-7004	10101-202-7004

FRONT - 21 x 3.5	7-VALVE, CHROME	7-VALVE, BLACK	PROCROSS, CHROME	PROCROSS, BLACK
2014-18 Chieftain/Roadmaster/ Classic/Vintage/Darkhorse/Springfield (TPMS)	10302-204-7006	10301-204-7006	10102-204-7006	10101-204-7006
2014-18 Chieftain/Roadmaster/ Classic/Vintage/Darkhorse/Springfield (No TPMS)	10302-204-7008	10301-204-7008	10102-204-7008	10101-204-7008
2015-18 Scout/Sixty/Bobber	10302-204-7004	10301-204-7004	10102-204-7004	10101-204-7004

FRONT - 23 x 3.5	7-VALVE, CHROME	7-VALVE, BLACK	PROCROSS, CHROME	PROCROSS, BLACK
2014-18 Chieftain/Roadmaster/ Classic/Vintage/Darkhorse/Springfield (TPMS)	10302-205-7006	10301-205-7006	10102-205-7006	10101-205-7006
2014-18 Chieftain/Roadmaster/ Classic/Vintage/Darkhorse/Springfield (No TPMS)	10302-205-7008	10301-205-7008	10102-205-7008	10101-205-7008
2015-18 Scout/Sixty/Bobber	10302-205-7004	10301-205-7004	10102-205-7004	10101-205-7004

FRONT - 26 x 3.5	7-VALVE, CHROME	7-VALVE, BLACK	PROCROSS, CHROME	PROCROSS, BLACK
2014-18 Chieftain/Roadmaster/ Classic/Vintage/Darkhorse/Springfield (TPMS)	10302-206-7006	10301-206-7006	10102-206-7006	10101-206-7006
2014-18 Chieftain/Roadmaster/ Classic/Vintage/Darkhorse/Springfield (No TPMS)	10302-206-7008	10301-206-7008	10102-206-7008	10101-206-7008

REAR - 17 x 6.25	7-VALVE, CHROME	7-VALVE, BLACK	PROCROSS, CHROME	PROCROSS, BLACK
2014-18 Chieftain/Roadmaster/ Classic/Vintage/Darkhorse/Springfield (TPMS)	10302-201-7506	10301-201-7506	10102-201-7506	10101-201-7506
2014-18 Chieftain/Roadmaster/Clas- sic/Vintage/Darkhorse/Springfield (No TPMS)	10302-201-7507	10301-201-7507	10102-201-7507	10101-201-7507

REAR - 18 x 3.5	7-VALVE, CHROME	7-VALVE, BLACK	PROCROSS, CHROME	PROCROSS, BLACK
2015-18 Scout/Sixty/Bobber	10302-202-7504	10301-202-7504	10102-202-7504	10101-202-7504

REAR - 18 x 5.5	7-VALVE, CHROME	7-VALVE, BLACK	PROCROSS, CHROME	PROCROSS, BLACK
2014-18 Chieftain/Roadmaster/ Classic/Vintage/Darkhorse/Springfield (TPMS)	10302-203-7506	10301-203-7506	10102-203-7506	10101-203-7506
2014-18 Chieftain/Roadmaster/Clas- sic/Vintage/Darkhorse/Springfield (No TPMS)	10302-203-7507	10301-203-7507	10102-203-7507	10101-203-7507
2015-18 Scout Bobber	10102-203-7504	10101-203-7504	10302-203-7504	10301-203-7504



<b>FRONT - 18 x 3.5</b>	<b>FLARE 5, CHROME</b>	<b>FLARE 5, BLACK</b>	<b>DRIFT, CHROME</b>	<b>DRIFT, BLACK</b>
2014-18 Chieftain/Roadmaster/ Classic/Vintage/Darkhorse/Springfield (TPMS)	10002-107-7007	10001-107-7007	10202-107-7007	10201-107-7007
2014-18 Chieftain/Roadmaster/ Classic/Vintage/Darkhorse/Springfield (No TPMS)	10002-107-7009	10001-107-7009	10202-107-7009	10201-107-7009

<b>FRONT - 21 x 3.5</b>	<b>FLARE 5, CHROME</b>	<b>FLARE 5, BLACK</b>	<b>DRIFT, CHROME</b>	<b>DRIFT, BLACK</b>
2014-18 Chieftain/Roadmaster/ Classic/Vintage/Darkhorse/Springfield (TPMS)	10002-104-7007	10001-104-7007	10202-104-7007	10201-104-7007
2014-18 Chieftain/Roadmaster/ Classic/Vintage/Darkhorse/Springfield (No TPMS)	10002-104-7009	10001-104-7009	10202-104-7009	10201-104-7009

<b>FRONT - 23 x 3.5</b>	<b>FLARE 5, CHROME</b>	<b>FLARE 5, BLACK</b>	<b>DRIFT, CHROME</b>	<b>DRIFT, BLACK</b>
2014-18 Chieftain/Roadmaster/ Classic/Vintage/Darkhorse/Springfield (TPMS)	10002-105-7007	10001-105-7007	10202-105-7007	10201-105-7007
2014-18 Chieftain/Roadmaster/ Classic/Vintage/Darkhorse/Springfield (No TPMS)	10002-105-7009	10001-105-7009	10202-105-7009	10201-105-7009

<b>FRONT - 26 x 3.5</b>	<b>FLARE 5, CHROME</b>	<b>FLARE 5, BLACK</b>	<b>DRIFT, CHROME</b>	<b>DRIFT, BLACK</b>
2014-18 Chieftain/Roadmaster/ Classic/Vintage/Darkhorse/Springfield (TPMS)	10002-106-7007	10001-106-7007	10202-106-7007	10201-106-7007
2014-18 Chieftain/Roadmaster/ Classic/Vintage/Darkhorse/Springfield (No TPMS)	10002-106-7009	10001-106-7009	10202-106-7009	10201-106-7009

<b>REAR - 17 x 6.25</b>	<b>FLARE 5, CHROME</b>	<b>FLARE 5, BLACK</b>	<b>DRIFT, CHROME</b>	<b>DRIFT, BLACK</b>
2014-18 Chieftain/Roadmaster/ Classic/Vintage/Darkhorse/Springfield (TPMS)	10002-101-7506	10001-101-7506	10202-101-7506	10201-101-7506
2014-18 Chieftain/Roadmaster/ Classic/Vintage/Darkhorse/Springfield (No TPMS)	10002-101-7507	10001-101-7507	10202-101-7507	10201-101-7507

<b>REAR - 18 x 5.5</b>	<b>FLARE 5, CHROME</b>	<b>FLARE 5, BLACK</b>	<b>DRIFT, CHROME</b>	<b>DRIFT, BLACK</b>
2014-18 Chieftain/Roadmaster/ Classic/Vintage/Darkhorse/Springfield (TPMS)	10002-103-7506	10001-103-7506	10202-103-7506	10201-103-7506
2014-18 Chieftain/Roadmaster/ Classic/Vintage/Darkhorse/Springfield (No TPMS)	10002-103-7507	10001-103-7507	10202-103-7507	10201-103-7507



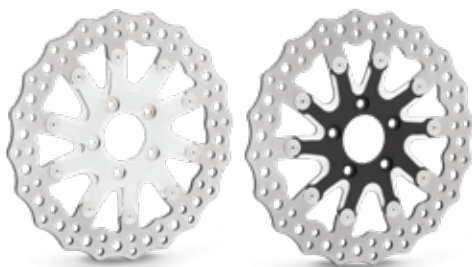
FLARE 5 , 14"



DRIFT , 14"



FLARE 5 , Rear



DRIFT , Rear

## FLARE 5 & DRIFT 14" PREMIUM FRONT ROTORS

- ▶ 420 Stainless Steel Floating Rotor
- ▶ Each 14" diameter rotor is engineered to efficiently disperse heat and perform consistently in all braking scenarios
- ▶ For use with Arlen Ness Flare 5 & Drift front wheels only
- ▶ Includes floating hardware
- ▶ Requires the use of Ness caliper adapter bracket or Ness 14" brake calipers

14"

### FLARE 5

33-10004-103 14" Front, Standard Finish

### DRIFT

33-10204-103 14" Front, Standard Finish

11.8"

### FLARE 5 / DRIFT

33-10004-102 11.8" Front, Standard Finish

**Note:** Check front fender clearance. 14" rotor's are intended for use with Arlen Ness or factory open front fenders with Ness fender brackets

## FLARE 5 & DRIFT PREMIUM REAR ROTORS

- ▶ 2-piece floating brake rotor
- ▶ CNC machined billet inner carrier
- ▶ Jagged style 420 stainless steel outer band
- ▶ Stainless outer ring is cut and drilled to efficiently disperse heat and perform consistently in all braking scenario's
- ▶ Available in 11.8" sizes

### FLARE 5 ROTORS

33-10002-302 11.8" Rear, Chrome

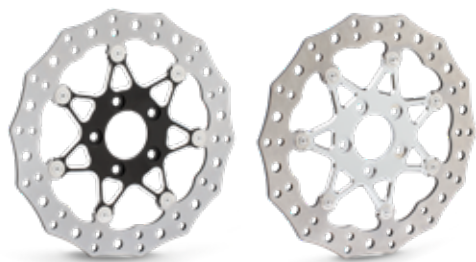
33-10001-302 11.8" Rear, Black

### DRIFT ROTORS

33-10202-302 11.8" Rear, Chrome

33-10201-302 11.8" Rear, Black





PROCROSS



7-VALVE

**PROCROSS & 7-VALVE FLOATING ROTORS**

- ▶ 2-piece floating brake rotor
- ▶ CNC machined billet inner carrier
- ▶ Jagged style 420 stainless steel outer band

- ▶ Stainless outer ring is cut and drilled to efficiently disperse heat and perform consistently in all braking scenarios
- ▶ Available in 11.8" size

**PROCROSS ROTORS**

33-10102-302	11.8" Front/Rear, Chrome
33-10101-302	11.8" Front/Rear, Black

**7-VALVE ROTORS**

33-10302-302	11.8" Front/Rear, Chrome
33-10301-302	11.8" Front/Rear, Black

**14" BRAKE CALIPER ADAPTER BRACKETS**

- ▶ Brake caliper adapter brackets to that relocate the factory caliper to the proper position for the use of 14" Ness brake rotors
- ▶ Constructed from billet aluminum
- ▶ Black anodize finish
- ▶ Sold in sets
- ▶ Fitment: 14-up Indian Chief®/Chieftan®/Springfield/Roadmaster®



BRAKE CALIPER ADAPTER BRACKETS

**ADAPTER BRACKETS**

02-980	14" Caliper Bracket Kit
--------	-------------------------

**ABS TIMING RINGS FOR 21", 23" & 26" FRONT WHEELS**

- ▶ Allows your ABS braking system to function properly while running 21", 23" & 26" front wheels
- ▶ Eliminate ABS warning light on instrument panel when running larger than factory front wheels
- ▶ Replaces factory timing ring & utilizes factory hardware



**TIMING RINGS**

P-2790	21" wheel
P-2791	23" wheel
P-2792	26" wheel

**BIG BRAKE ROTOR FOR SCOUT**

- ▶ Add braking performance and style to your Indian® Scout®
- ▶ 14" wave style front rotors are drastically larger than stock resulting in increased braking performance, billet brake caliper adapter included to properly relocate factory caliper
- ▶ Great way to improve the look by adding race styling to your factory wheel
- ▶ Bolt-on install, no fabrication or re-bleeding of the brakes required
- ▶ Designed to fit both ABS & Non ABS Indian® Scout® models

**14" WAVE STYLE FRONT ROTORS**

I-1180	14" Offset Front Rotor
--------	------------------------

**NOTE:** Will not fit Scout models equipped with ABS when relocating the caliper. The ABS sensor is attached and will not read the timing ring.



I-1180 14" BIG BRAKE ROTOR



DRIVER BOARDS



PASSENGER BOARDS



FOOT PEGS



SHIFT PEGS

### 10-GAUGE FLOORBOARDS

- ▶ CNC machined from forged billet aluminum
- ▶ 10-Gauge style features a cut through design for reduced weight and a unique look
- ▶ Rubber inserts offer foot traction and protects the finish of the board
- ▶ Matching passenger boards available
- ▶ Driver Floorboards are 18" L x 5.75" W x 1" thick
- ▶ Passenger Floorboards: 7" L X 4" W X 1" thick
- ▶ Choose from chrome or black anodize finish
- ▶ Fits 14-up Chief®/Chieftain®/Roadmaster®/Springfield

P-3013 Driver Floorboards, chrome

P-3014 Driver Floorboards, black

P-3005 Passenger Floorboards, chrome

P-3006 Passenger Floorboards, black

P-3017 Footpegs, chrome

P-3018 Footpegs, black

P-1316 Shift peg, chrome

P-1317 Shift peg, black

### REPLACEMENT RUBBERS

06-846 Driver Repl Rubbers

06-847 Passenger Repl Rubbers





**DEEP CUT FLOORBOARDS**

- ▶ CNC machined from forged billet aluminum
- ▶ Deep Cut design features aluminum accent cuts on both the top of the floorboard and sides for eye catching style at every angle
- ▶ Rubber inserts offer foot traction and protects the finish of the board
- ▶ Extended length for comfort
- ▶ Matching passenger boards available
- ▶ Driver Floorboards are 18"L x 5.75"W x 1" thick
- ▶ Passenger Floorboards: 7"L X 4"W X 1" thick
- ▶ Choose from chrome or black anodize finish
- ▶ Fits 14-up Chief®/Chieftain®/Roadmaster®/Springfield

P-3011	Driver Floorboards, black
P-3010	Driver Floorboards, chrome
P-3007	Passenger Floorboards, chrome
P-3008	Passenger Floorboards, black
I-1318	Shift peg, chrome
I-1319	Shift peg, black

**REPLACEMENT RUBBERS**

- 06-846 Driver Repl Rubbers
- 06-847 Passenger Repl Rubbers



DRIVER BOARDS



PASSENGER BOARDS



I-1318 Deep Cut / I-1319 Deep Cut

**RETRO FLOORBOARDS**

- ▶ CNC machined from billet aluminum
- ▶ Retro styling goes well the classic Indian look and finned factory engine covers
- ▶ Rubber strips offers foot traction and dampen vibration
- ▶ Extended length for comfort
- ▶ 18"L x 5.75"W x 1" Thick
- ▶ Chrome finish
- ▶ Fits 14-up Chief®/Chieftain®/Roadmaster®/Springfield

**DRIVER BOARD**

P-3012	Driver Floorboards, chrome
--------	----------------------------

**SHIFT PEG**

07-491	Retro Shift Peg, chrome
--------	-------------------------



SHIFT PEG

RETRO



BEVELED

### FUSION SERIES BEVELED FLOORBOARDS

- ▶ The Fusion of billet aluminum and high traction rubber for clean custom style with excellent foot grip
- ▶ Floorboards are forged from aluminum and then CNC machined
- ▶ Knurled and Linear floorboard rubber is engineered and tested to offer foot traction in any condition
- ▶ 3 mounting points for up to 3" of adjustability (Front to Rear)
- ▶ Matching grips and passenger pegs available
- ▶ Driver Floorboard Dimensions: 13.8" L x 5.0" W
- ▶ Choose from chrome or black anodize finish
- ▶ Fits 14-up Chief®/Chieftain®/Roadmaster®/Springfield

#### DRIVER FLOORBOARD

I-1378 Beveled, chrome

I-1379 Beveled, black

#### FOOTPEGS

V-1354 Beveled Fusion, chrome

V-1355 Beveled Fusion, black

#### SHIFTER / BRAKE PEG

V-1356 Beveled Fusion, chrome

V-1357 Beveled Fusion, black







### 10-GAUGE MINI DRIVER BOARDS FOR SCOUT®

- ▶ Mini floorboards for Indian Scout
- ▶ Designed to work with factory foot controls, replaces foot peg for more foot room
- ▶ Matching shifter pegs and grips available separately.
- ▶ Available in chrome or black anodize finish
- ▶ Designed to fit 14-up Scout® / Scout® Sixty / Scout® Bobber Models
- ▶ Sold in pairs

#### MINI DRIVER BOARDS

P-3002 10-Gauge Driver, chrome

P-3000 10-Gauge Driver, black

#### SHIFT PEG

P-1316 10-Gauge Shift peg, chrome

P-1317 10-Gauge Shift peg, black

#### REPLACEMENT RUBBERS

06-846 10-Gauge Driver Repl Rubbers



10-GAUGE

### DEEP CUT MINI DRIVER BOARDS FOR SCOUT®

- ▶ Mini floorboards for Indian Scout
- ▶ Designed to work with factory foot controls, replaces foot peg for more foot room
- ▶ Matching shifter pegs and grips available separately.
- ▶ Deep Cut style
- ▶ Available in chrome or black anodize finish
- ▶ Designed to fit 14-up Scout® / Scout® Sixty / Scout® Bobber Models
- ▶ Sold in pairs

#### MINI DRIVER BOARDS

P-3003 Deep Cut Driver, chrome

P-3001 Deep Cut Driver, black

#### REPLACEMENT RUBBERS

06-846 Deep Cut Driver Repl Rubbers



DEEP CUT





# FOOT CONTROLS





### DEEP CUT SHIFT ARMS

- ▶ Toe shift, heel shift and brake arms for Indian models
- ▶ All shift and brake levers are CNC machined from billet aluminum
- ▶ Deep cut shift styled arms include Deep Cut billet shift peg
- ▶ Heel shift arm mounts directly to Ness Deep Cut toe shift
- ▶ Choose from black or chrome finish
- ▶ Designed to fit 14-up Chief®/Chieftain®/Roadmaster®/Dark Horse®/Springfield

#### TOE SHIFT ARM / 14-up Classic/Vintage/Roadmaster/Dark Horse

I-1903 Deep Cut Toe Shift Arm, chrome

I-1902 Deep Cut Toe Shift Arm, black

#### HEEL SHIFT ARM / 14-up Classic/Vintage/Roadmaster/Dark Horse

I-1907 Deep Cut Heel Shift Arm, chrome

I-1906 Deep Cut Heel Shift Arm, black



TOE SHIFT ARM



HEEL SHIFT ARM

### DEEP CUT BRAKE ARMS

- ▶ Brake levers are CNC machined from billet aluminum
- ▶ Deep cut brake styled arms include Deep Cut billet shift peg
- ▶ Designed to fit 14-17 Chief®/Chieftain®/Roadmaster®/Dark Horse®/Springfield

#### BRAKE ARM / 14-17 Classic/Vintage/Roadmaster/Dark Horse

I-1905 Deep Cut Brake Arm, chrome

I-1904 Deep Cut Brake Arm, black

**NOTE:** Will NOT fit 2018 models



BRAKE ARM



### MODULAR ADJUSTABLE HANDLEBARS FOR CHIEFTAIN®

- ▶ These innovative 1-1/4" steel handlebars feature billet aluminum junction clamps that rotate towards or away from the rider for their desired comfort needs
- ▶ Mini-Ape Styling
- ▶ Multi-piece design allows for easier installation and adjusting to each riders specific riding position
- ▶ Choose from chrome or black finish
- ▶ Designed to fit 20014-17 Indian® Chieftain® models

#### CHIEFTAIN® MODELS W/O NAV

I-1811 12" Modular Bars, chrome

I-1810 12" Modular Bars, black

#### CHIEFTAIN® MODELS W/ NAV

I-1813 12" Modular Bars, chrome

I-1812 12" Modular Bars, black

HANDLEBAR DIMENSIONS	RISE	PULLBACK	WIDTH
	12"	8.5"	37" ADJUSTED

**NOTE:** Does **NOT** fit 2018 models





**COMFORT GRIPS SERIES**

- ▶ Grips in the comfort grip series are machined from billet aluminum and feature rubber inserts for excellent hand traction
- ▶ Slightly larger diameter than factory which helps with hand fatigue during long rides
- ▶ 10-Gauge style grips feature linear style rubber for a soft touch feel while dampening vibration
- ▶ Deep Cut style grips feature rubber inserts with an air cushion feel to dampen vibration
- ▶ Available in 10-Gauge & Deep Cut styles
- ▶ Sold in pairs, matching pegs and floorboards are available
- ▶ Designed to fit Indian® Chief®/Chieftain®/Roadmaster®/Dark Horse® & Scout® models



10-GAUGE



DEEP CUT

	SCOUT®	CHIEF®
10-Gauge, chrome	P-5000	I-5000*
10-Gauge, black	P-5010	I-5010*
Deep Cut, chrome	P-5001	I-5001
Deep Cut, black	P-5011	I-5011

\*Does NOT fit 2018 models





#### DIAMOND FORGED BILLET MIRRORS

- ▶ Mirror head and stem both CNC machined from forged aluminum
- ▶ Modern diamond style design
- ▶ DOT sized mirror
- ▶ Choose from chrome or black anodize finish

	LEFT	RIGHT
Diamond, chrome	13-127	13-129
Diamond, black	13-126	13-128



DIAMOND

#### CAGED SERIES FORGED BILLET MIRRORS

- ▶ Lightweight forged multi-piece design mirrors
- ▶ Oval Mirror heads measure 5.45" wide x 2.5" tall
- ▶ Forged mirror stem
- ▶ Stainless steel machined pivot hardware
- ▶ Available in chrome or black anodize finish

	LEFT	RIGHT
10-Gauge, chrome	13-161	13-163
10-Gauge, black	13-160	13-162
Deep Cut, chrome	13-165	13-167
Deep Cut, black	13-164	13-166



10-GAUGE



DEEP CUT



### RAD III MIRRORS

- ▶ RAD III mirrors were designed to offer clean custom styling without sacrificing field of vision or safety
- ▶ Features Convex glass
- ▶ Adjustable swivel mount mirror head allows mirror to be adjusted to riders preferred position
- ▶ Mirror stems are available in steel or sculpted cast stem
- ▶ Available in chrome or black powder coat finish
- ▶ Each mirror includes mounting hardware
- ▶ Sold Individually
- ▶ D.O.T. approved
- ▶ Glass dimensions: 7" W x 3" H

CHROME	LEFT	RIGHT
RAD III, Cast	13-090	13-091
RAD III, Steel	M-1033	M-1034

BLACK	LEFT	RIGHT
RAD III, Cast	13-092	13-093
RAD III, Steel	M-1036	M-1037



RAD III, cast



RAD III, steel

### ORIGINAL FORGED BILLET MIRRORS

- ▶ Each mirror and stem is forged from billet aluminum and then CNC machined to perfection
- ▶ Convex glass for a wide field of vision
- ▶ Forged mirrors feature a stainless steel pivot that is hydraulically pressed into each mirror stem and mounts to a triangulated spring plate in the mirror head that is guaranteed to never loosen or vibrate out of adjustment
- ▶ Mirror stems are available in standard or hanger style configurations. Hanger stems can be mounted above or below the hand control, for ape hanger handlebars we recommend mounting mirrors below the hand control
- ▶ Available in chrome or black anodize finish
- ▶ Each mirror includes mounting hardware for both Harley Davidson® and metric applications
- ▶ Sold individually

SHORT STEM	LEFT	RIGHT
Smoothie cats eye, ch	13-136	13-138
Smoothie cats eye, blk	13-135	13-137
Beveled cats eye, ch	13-131	13-133
Beveled cats eye, blk	13-130	13-132

HANGER STEM	LEFT	RIGHT
Smoothie cats eye, ch	13-146	13-148
Smoothie cats eye, blk	13-145	13-147
Beveled cats eye, ch	13-141	13-143
Beveled cats eye, blk	13-140	13-142



SMOOTHIE



BEVELED

### MIRROR MOUNT ADAPTERS FOR 18-UP INDIAN® CHIEF

- ▶ A clean color match option to raise the mirror to clear the master cylinder during installation for a secure, clean look.
- ▶ Kit comes with both left and right provisions to keep your mirrors level.
- ▶ Required for Ness Micro, 10-Gauge, Deep Cut, and Diamond mirrors to mount on 18-up Indian Chief Models
- ▶ Choose from chrome or black anodize finish

I-1820 Adapter Kit, chrome

I-1821 Adapter Kit, black





RAD II



FOUR POINT



SCOOP



### MICRO-MIRRORS

- ▶ Clean and compact designs that add style to your motorcycle
- ▶ Convex glass for a wide field of vision
- ▶ Adjustable swivel mount mirror heads allows mirror to be adjusted to riders preferred position
- ▶ Available in chrome plated or black powder coat finish
- ▶ Each mirror includes mounting hardware for both Harley Davidson® and metric applications
- ▶ Sold individually

CHROME	LEFT	RIGHT
Scoop	13-060	13-061
Four Point (US Patent D522,942S)	13-416	13-417
RAD II (US Patent D570,755S)	13-410	13-411
BLACK	LEFT	RIGHT
Scoop	13-028	13-029
Four Point (US Patent D522,942S)	13-418	13-419
RAD II (US Patent D570,755S)	13-400	13-401

**NOTE:** 2018-up Indian Chief models require Ness Mirror Mount Adapters found on page 27.



**MICRO-MIRRORS**

- ▶ Clean and compact designs that add style to your motorcycle
- ▶ Convex glass for a wide field of vision
- ▶ Adjustable swivel mount mirror heads allows mirror to be adjusted to riders preferred position
- ▶ Available in chrome plated or black powder coat finish
- ▶ Each mirror includes mounting hardware for both Harley Davidson® and metric applications
- ▶ Sold individually

CHROME	LEFT	RIGHT
Flamed	13-070	13-071
Mini-Oval	13-406	13-407
Upswept	13-408	13-409
BLACK	LEFT	RIGHT
Flamed	13-087	13-088
Mini-Oval	13-412	13-413
Upswept	13-404	13-405

**NOTE:** 2018-up Indian Chief models require Ness Mirror Mount Adapters found on page 27.



UPSWEPT



MINI OVAL



FLAMED

**ORIGINAL STYLE MIRRORS**

- ▶ Early design offering timeless classic style for your motorcycle
- ▶ Convex glass for a wide field of vision
- ▶ Adjustable swivel mount mirror heads allows mirror to be adjusted to riders preferred position
- ▶ Chrome plated finish
- ▶ Each mirror includes mounting hardware for both Harley Davidson® and metric applications
- ▶ Sold individually

STYLE	LEFT	RIGHT
Stealth, Long-Stem	13-058	13-058
Stealth, Short-Stem	13-053	13-053
Oval Stepped	13-044	13-044
Slingshot Grooved	13-040	13-040
Cat-Eye Softbend, Smooth	13-046	13-046
Cross	13-100	13-100
3D Cat-Eye	13-068	13-069
Teardrop	13-035	13-036

**NOTE:** Some mirrors not designed to fit both sides of the handlebar. All sold individually.



STEALTH, Long Stem



STEALTH, Short Stem



SLINGSHOT, Grooved



CATEYE SOFTBEND, Smooth



OVAL, Stepped



TEARDROP



CROSS, DIE-CAST



3D CATEYE

90 degree air cleaners designed to force as much airflow into your ThunderStroke™ engine as possible for big performance gains! The all-new Arlen Ness air cleaner series for Indian's comes standard with a triple threat of features: increase in performance, style and legroom. Whether you want to stand out from the crowd with our CNC forged billet kits or just big performance gains without the extra flash, we got you covered!



# AIR CLEANERS

SHOWN WITH DEEP CUT STYLE





**90° AIR CLEANER KIT FOR 111 THUNDERSTROKE™ ENGINES**

- ▶ 90° forward facing air cleaner kits designed to increase horsepower and torque
- ▶ Our proprietary elbow relocates your factory throttle body to a forward facing position allowing for unobstructed airflow, a clean look, and improved legroom
- ▶ Performance filters is constructed from a black synthetic filter element for the best in filtration and flow, while also being water resistant. Filter is washable and does not require oil
- ▶ Each kit includes elbow, throttle body cover, synthetic filter, gaskets and necessary hoses/hardware
- ▶ Forged billet air cleaner covers are available and can be added to our standard kits anytime. Complete kits with covers are also available
- ▶ Choose from chrome or black finish

**NOTE:** Will NOT fit 116 Big Bore Kits

STANDARD KIT	BLACK	CHROME
14-up Chief®, Chieftain®, Roadmaster®, Springfield	I-1608	I-1609



### 90° AIR CLEANER KIT FOR 111 THUNDERSTROKE™ ENGINES

- ▶ 90° forward facing air cleaner kits designed to increase horsepower and torque
- ▶ Our proprietary elbow relocates your factory throttle body to a forward facing position allowing for unobstructed airflow, a clean look, and improved legroom
- ▶ Performance filters is constructed from a black synthetic filter element for the best in filtration and flow, while also being water resistant. Filter is washable and does not require oil
- ▶ Filter covers are forged from aluminum and then CNC machined to perfection
- ▶ Each kit includes elbow, throttle body cover, forged filter cover, synthetic filter, gaskets and necessary hoses/hardware
- ▶ Choose from Deep Cut, 10-Gauge and Beveled styles in chrome or black finish



DEEP CUT KIT



10-GAUGE KIT



BEVELED KIT

BLACK KIT	10-GAUGE	DEEP CUT	BEVELED
14-up Chief®, Chieftain®, Roadmaster®, Springfield	I-1600	I-1606	I-1604
CHROME KIT	10-GAUGE	DEEP CUT	BEVELED
14-up Chief®, Chieftain®, Roadmaster®, Springfield	I-1601	I-1607	I-1605
COVER ONLY	10-GAUGE	DEEP CUT	BEVELED
BLACK	I-1611	I-1613	I-1615
CHROME	I-1612	I-1614	I-1616

**NOTE:** Will NOT fit 116 Big Bore





**ARLEN NESS TORQUE BOX FOR INDIAN® SCOUT®**

- ▶ The all new Torque Box air cleaner has been engineered and tested to maximize airflow to the Indian® Scout engine for more horsepower and torque
- ▶ Race proven and tested. We supplied the Indian & RSD Hooligan Series Scouts with torque box's to get the most out of their machines on the track. After two years of racing, dirt and crashing the Torque box is still performing like new
- ▶ Dyno results have shown an average of 10% increase in horsepower and torque when installing Torque Box with an aftermarket or factory performance exhaust (Fuel Tuner recommended)
- ▶ Torque Box replaces the entire factory air cleaner assembly and mounts directly to the throttle body for unobstructed air flow & reduced weight
- ▶ Performance filter is constructed from red pre-oiled cotton and is washable/re-useable
- ▶ Filter Tune-up kits available
- ▶ Fits Scout® / Scout® Sixty / Scout®Bobber

P-1602 Arlen Ness Torque Box



COMPLETE KIT

**DISCLAIMER:** NOT LEGAL FOR SALE OR USE IN CALIFORNIA ON ANY POLLUTION CONTROLLED MOTOR VEHICLES







### FINNED 111 COVER LINE FOR THUNDERSTROKE ENGINES

- ▶ 3D sculpted cover line designed to improve and match the style of the Thunderstroke engine
- ▶ Each cover is CNC machined from billet aluminum
- ▶ Cam Cover, Horn Cover and Primary Covers are available
- ▶ Hardware and instructions are included for simple installation
- ▶ Choose from chrome or black anodize finish
- ▶ Fits 14-up Chief®, Chieftain®, Roadmaster®, Springfield

#### COVERS

I-1167	Cam Cover, black
I-1168	Cam Cover, chrome
I-1232	Horn Cover, fits 14-17 models, black
I-1233	Horn Cover, fits 14-17 models, chrome
I-1238	Horn Cover, fits 2018 models, black
I-1239	Horn Cover, fits 2018 models, chrome
I-1176	Primary Cover, black
I-1177	Primary Cover, chrome



CAM COVER

HORN COVER

PRIMARY COVER

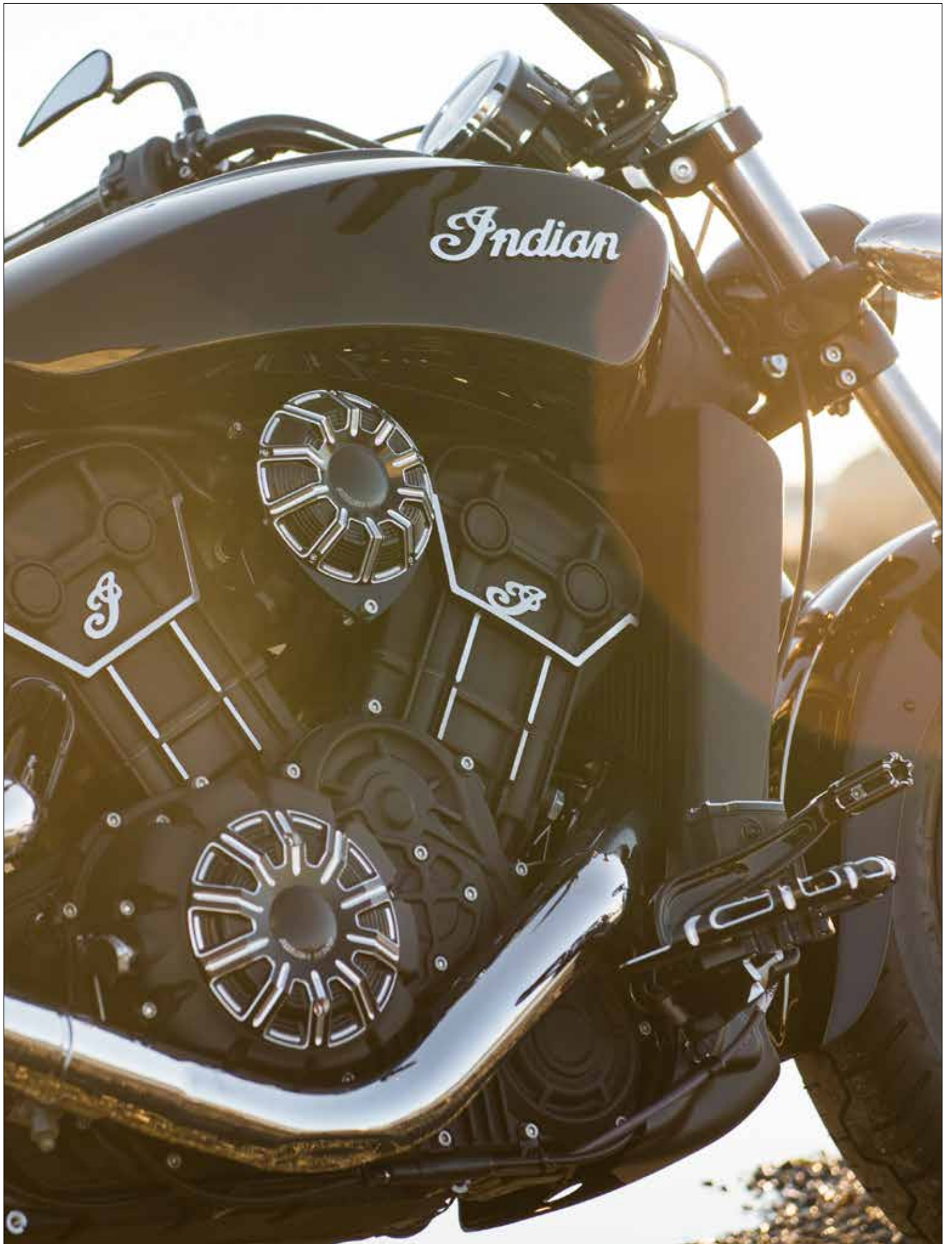


CAM COVER

HORN COVER

PRIMARY COVER









### 10-GAUGE THERMOSTAT COVER

- ▶ CNC machined from billet aluminum
- ▶ Replaces factory cover
- ▶ Includes chrome hardware
- ▶ Available in chrome or a black anodize finish
- ▶ Designed to fit 15-up Indian® Scout® / Scout® Sixty / Scout® Sixty models

I-1217 10-Gauge, chrome

I-1216 10-Gauge, black

**NOTE:** Will NOT fit Scout Bobber

### 10-GAUGE KEY SWITCH COVER

- ▶ CNC machined from billet aluminum
- ▶ Replaces factory cover
- ▶ Includes chrome hardware
- ▶ Available in chrome or a black anodize finish
- ▶ Designed to fit 15-up Indian® Scout® / Scout® Sixty / Scout® Sixty models

I-1221 10-Gauge, chrome

I-1220 10-Gauge, black

**NOTE:** Will NOT fit Scout Bobber

### 10-GAUGE PRIMARY COVER

- ▶ CNC machined from billet aluminum
- ▶ Replaces factory primary cover on right side of engine
- ▶ Includes chrome hardware
- ▶ Available in chrome or a black anodize finish
- ▶ Designed to fit 15-up Indian® Scout® / Scout® Sixty / Scout® Sixty models

I-1173 10-Gauge, chrome

I-1172 10-Gauge, black

### 10-GAUGE STATOR COVER

- ▶ CNC machined from billet aluminum
- ▶ Replaces factory stator cover on the left side of the engine
- ▶ Includes chrome hardware
- ▶ Available in chrome or black anodized finish
- ▶ Designed to fit 15-up Indian® Scout® / Scout® Sixty / Scout® Sixty models

I-1171 10-Gauge, chrome

I-1170 10-Gauge, black



THERMOSTAT COVER



KEY SWITCH COVER



PRIMARY COVER



STATOR COVER

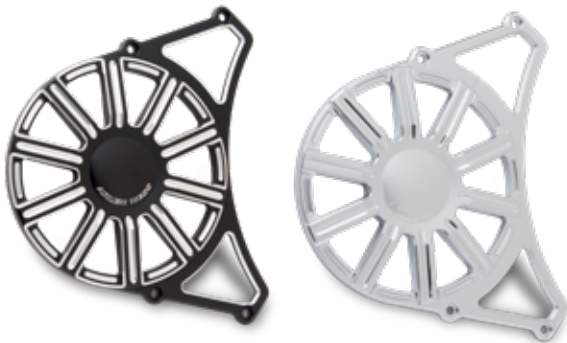


### 10-GAUGE FRONT DRIVE PULLEY COVER

- ▶ 10-Gauge styled front drive pulley cover
- ▶ Multi-piece design enhances style and replaces heavy factory cast cover
- ▶ Chrome hardware included
- ▶ Available in chrome or a black anodize finish.
- ▶ Designed to fit 15-up Indian® Scout® / Scout® Sixty / Scout® Bobber models

P-1165 10-Gauge, chrome

P-1164 10-Gauge, black



FRONT DRIVE PULLEY COVER



### FENDER STRUTS

- ▶ 10-Gauge fender struts machined from billet aluminum
- ▶ Provides a billet accent and finished look by replacing the unfinished hardware on each side of the rear fender
- ▶ Utilizes factory rear fender mounting locations
- ▶ Chrome hardware included
- ▶ Available in chrome or black anodize finish
- ▶ Sold in pairs
- ▶ Designed to fit 15-up Indian® Scout® / Scout® Sixty / models

#### FENDER STRUTS

I-1157 10-Gauge, chrome

I-1156 10-Gauge, black



FENDER STRUTS



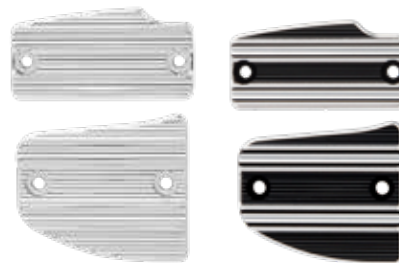


### MASTER CYLINDER FRONT AND REAR COVERS

- ▶ 10-Gauge master cylinder covers for Indian Scout hand and foot controls
- ▶ CNC machined from billet aluminum
- ▶ Accepts factory gaskets
- ▶ Sold in pairs
- ▶ Available in chrome or black anodize finish.
- ▶ Designed to fit 15-up Scout®

#### MASTER CYLINDER COVERS

I-1227	10-Gauge, chrome
I-1226	10-Gauge, black



MASTER CYLINDER COVERS

### GAS CAPS

- ▶ CNC machined from billet aluminum
- ▶ Two-piece design eliminates the need to use factory key to open fuel tank and makes refueling easier by allowing to fill at any angle
- ▶ Vented
- ▶ Choose between 10-Gauge & Beveled styles
- ▶ Available in chrome or black anodize finish
- ▶ Designed to fit 15-up Indian® Scout®

#### GAS CAPS

P-1392	10-Gauge, chrome
P-1393	10-Gauge, black
P-1390	Beveled, chrome
P-1391	Beveled, black



10-GAUGE



BEVELED



MUFFLER TIPS

### 10-GAUGE MUFFLER TIPS FOR SCOUT®

- ▶ 10-Gauge billet aluminum exhaust tips enhance the look of your Scout's factory mufflers
- ▶ Available in chrome or black anodize finish
- ▶ Designed to fit 15-up Scout®, Sold in pairs

#### MUFFLER TIPS

I-1107	10-Gauge, chrome
I-1106	10-Gauge, black



10-GAUGE, black



10-GAUGE, chrome



DEEP CUT, black



DEEP CUT, chrome



BEVELED, black



BEVELED, chrome



SMOOTH, black



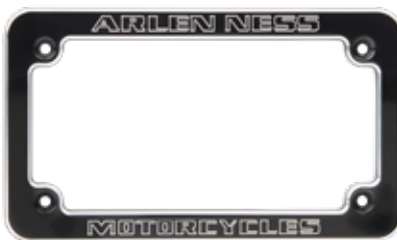
SMOOTH, chrome



SLOT TRACK, black



ENGRAVED, black



NESS DEALER, black

### LICENSE PLATE FRAMES

- ▶ Billet aluminum construction measures 7.25" x 4.25" to fit most states
- ▶ Blind hole mounting for a clean look
- ▶ Available in chrome or black anodize finish

### LICENSE FRAMES

12-135	10-Gauge, chrome
12-136	10-Gauge, black
12-134	Slot Track, black
12-143	Beveled, chrome
12-144	Beveled, black
12-142	Engraved, black
12-154	Deep Cut, chrome
12-159	Deep Cut, black
12-149	Smooth, chrome
12-148	Smooth, black
12-100	Ness Dealer, black



# FIGHTING

41





TEARDROP



### 1" "BILLET BULLET" LED ACCESSORY LIGHTS

- ▶ Features 24 hi-intensity LED bulbs
- ▶ Accessory light housings are CNC machined from billet aluminum and feature a smoked lens for a clean look
- ▶ Teardrop design measures 1" diameter x 1-1/2" long
- ▶ Fluted design measures 1" diameter x 1-3/8" tall
- ▶ Each light includes an 5/16"-24 threaded stud
- ▶ Dual filament
- ▶ Available in chrome or black anodize finish, sold in pairs

#### TEARDROP

##### CHROME

12-716 Teardrop w/ Amber LED

12-718 Teardrop w/ Red LED

##### BLACK

12-717 Teardrop w/ Amber LED

12-719 Teardrop w/ Red LED

#### FLUTED

##### CHROME

12-726 Fluted w/ Amber LED

12-728 Fluted w/ Red LED

##### BLACK

12-727 Fluted w/ Amber LED

12-729 Fluted w/ Red LED

**NOTE:** These accessory lights are designed to be used as supplement lighting **ONLY**, not to replace original turn signals, marker, or brake lights.



TEARDROP



FLUTED



**DEEP CUT ACCESSORY LIGHTS**

- ▶ One of the finest factory style accessory lights on the market
- ▶ Deep Cut styled billet housings are available in chrome or black anodize
- ▶ Super bright "Fire Ring" LED lens kit adds the finishing touch
- ▶ Sold individually

	LENS	TRIM RING	TRIM LED	FILAMENT
12-752	Amber	Chrome	Amber	Dual
12-764	Amber	Chrome	White	Dual
12-753	Amber	Black	Amber	Dual
12-765	Amber	Black	White	Dual
12-750	Red	Chrome	Red	Dual
12-751	Red	Black	Red	Dual
12-748	Red	Chrome	Red	Single
12-749	Red	Black	Red	Single

**NOTE:** Most multiple LED installations will require a load equalizer to insure proper flash rates and function of HD® security systems.

**NOTE:** These accessory lights are designed to be used as supplement lighting ONLY, not to replace original turn signals, marker, or brake lights.



**2" SPEEDING BULLET MARKER LIGHTS**

- ▶ Smooth 2" style coned design
- ▶ Available in LED or standard bulb configurations
- ▶ Each light includes a red and amber lens
- ▶ Beautifully chrome plated or black anodize finish
- ▶ Standard bulb available in single or dual filament
- ▶ Universal fitment, Sold individually

**LED KIT**

12-730	Smooth chrome bullet w/ Amber LED
12-731	Smooth chrome bullet w/ Red LED
12-733	Smooth black bullet w/ Amber LED
12-734	Smooth black bullet w/ Red LED

**ACCESSORIES**

12-710	Replacement bulb, 12v23w, each
12-711	Replacement Red lens, each
12-712	Replacement Amber lens, each
12-713	Replacement bulb, 12v3w, each
12-714	Replacement mounting stud, each
12-708	Replacement Bullet ring, each, chrome
12-709	Replacement Bullet ring, each, black
12-732	Replacement Amber LED board, each
12-739	Replacement Red LED board, each

**NOTE:** These accessory lights are designed to be used as supplement lighting ONLY, not to replace original turn signals, marker, or brake lights.



Learn more about motorcycle air intake and filters we have.