

BAER



BRAKE SYSTEMS



Wheel Spacer Tech Sheet

Universal Wheel Spacer

Improve Appearance

Widen Track

Increase Brake Clearance

6061-T6 Aluminum*

Sold in Pairs

Proudly Made in the USA



*1/8" are steel and zinc plated

Made in USA



STANCE IS EVERYTHING

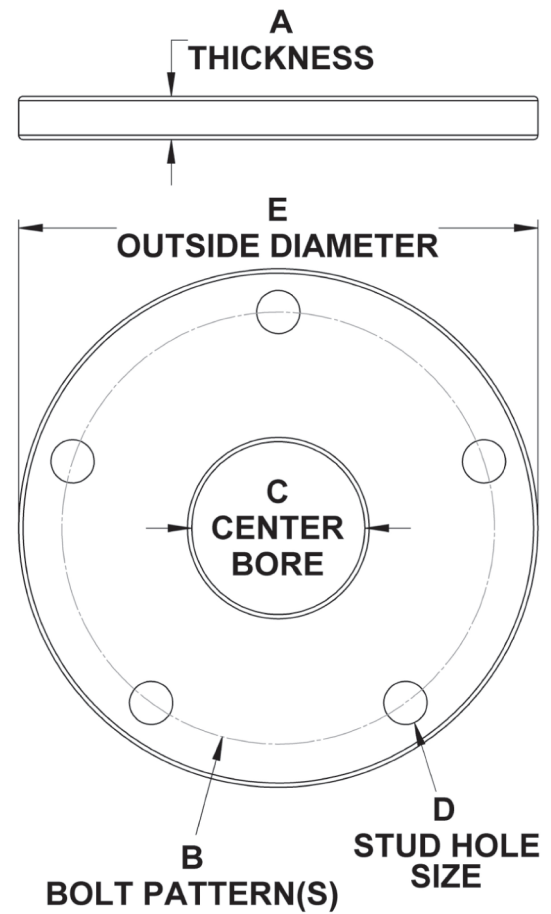
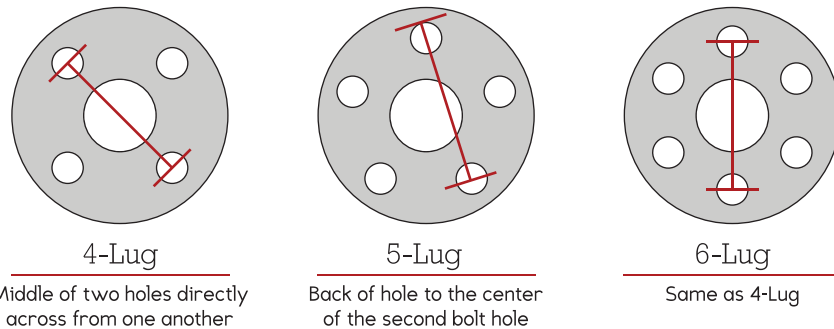
QUALITY | SAFETY | PERFORMANCE | APPEARANCE

Installation Check List

| Make sure you have enough thread engagement on your studs before adding spacers. In many cases most cars can not take more than 1/4" (.250) with stock studs (and this is not always the case). Please make sure you have the proper length studs to add wheel spacers.

| Make sure your car can accept the amount of spacer you are looking to add! Pay attention to fender clearance, and tire rubbing!

How to Measure Bolt Pattern



Wheel Spacer Chart

KIT NUMBER	THICKNESS	BOLT PATTERN(S)	CENTER BORE	STUD HOLE SIZE	OUTSIDE DIAMETER
	A	B	C	D	E
2000001	1/4 (.250)	4x100, 108, 114.3	2.560	9/16 (.562)	6.0
2000002	3/8 (.375)	4x100, 108, 114.3	2.560	9/16 (.562)	6.0
2000003	1/2 (.500)	4x100, 108, 114.3	2.560	9/16 (.562)	6.0
2000004	5/8 (.625)	4x100, 108, 114.3	2.560	9/16 (.562)	6.0
2000005	3/4 (.750)	4x100, 108, 114.3	2.560	9/16 (.562)	6.0
2000006	7/8 (.875)	4x100, 108, 114.3	2.560	9/16 (.562)	6.0
2000007	1.00	4x100, 108, 114.3	2.560	9/16 (.562)	6.0
2000008	1/4 (.250)	5x4.25, 4.50, 4.75	2.800	9/16 (.562)	6.0
2000009	3/8 (.375)	5x4.25, 4.50, 4.75	2.800	9/16 (.562)	6.0
2000010	1/2 (.500)	5x4.25, 4.50, 4.75	2.800	9/16 (.562)	6.0
2000011	5/8 (.625)	5x4.25, 4.50, 4.75	2.800	9/16 (.562)	6.0
2000012	3/4 (.750)	5x4.25, 4.50, 4.75	2.800	9/16 (.562)	6.0
2000013	7/8 (.875)	5x4.25, 4.50, 4.75	2.800	9/16 (.562)	6.0
2000014	1.00	5x4.25, 4.50, 4.75	2.800	9/16 (.562)	6.0
2000036	1/4 (.250)	6x4.50	3.075	9/16 (.562)	6.5
2000037	3/8 (.375)	6x4.50	3.075	9/16 (.562)	6.5
2000038	1/2 (.500)	6x4.50	3.075	9/16 (.562)	6.5
2000039	1/4 (.250)	6x5.50	3.075	9/16 (.562)	7.25
2000040	3/8 (.375)	6x5.50	3.075	9/16 (.562)	7.25
2000041	1/2 (.500)	6x5.50	3.075	9/16 (.562)	7.25
2000042	1/8 (.125)*	5x4.50, 4.75	2.800	17/32 (.531)	6.0
2000043	1/8 (.125)*	5x5.0, 5.50	3.060	5/8 (.625)	7.0
2000044	1/4 (.250)	5x5.0, 5.50	3.075	5/8 (.625)	7.0
2000045	3/8 (.375)	5x5.0, 5.50	3.075	5/8 (.625)	7.0
2000046	1/2 (.500)	5x5.0, 5.50	3.075	5/8 (.625)	7.0
2000050	1/4 (.250)	5x108, 100	2.800	9/16 (.562)	6.0
2000051	3/8 (.375)	5x108, 100	2.800	9/16 (.562)	6.0
2000052	1/2 (.500)	5x108, 100	2.800	9/16 (.562)	6.0

*1/8" are steel and zinc plated