



BODY 4 ARMOR 4



2021

TABLE OF CONTENTS

JEEP	01
CHEVY	21
GMC	26
DODGE	27
FORD	31
TOYOTA	37
TENTS & AWNINGS	47
LEVELING KITS	51
ACCESSORIES	55
LIGHTS	59
WARRANTY	61

JEEP





JEEP
DOORS





2018-2020

WRANGLER JL / GLADIATOR JT TUBE DOORS

PN: JL-6154 FRONT **NEW**

PN: JL-6155 REAR **NEW**

- 2" Steel tube construction
- Industry leading two-stage latch mechanism
- Anti-rattle bump stops and door limit straps
- Two-stage heavy texture powder coat finish in black
- Door height engineered for comfort
- Adjustable latch allows for easy alignment to factory door striker
- Mirror brackets designed to accommodate Body Armor 4x4 trails mirrors (PN: 5126)



2007-2018

WRANGLER JK TUBE DOORS

PN: JK-6154 FRONT **NEW**

PN: JK-6155 REAR **NEW**

- 2" Steel tube construction
- Industry leading two-stage latch mechanism
- Anti-rattle bump stops and door limit straps
- Two-stage heavy texture powder coat finish in black
- Door height engineered for comfort
- Adjustable latch allows for easy alignment to factory door striker
- Mirror brackets designed to accommodate Body Armor 4x4 trails mirrors (PN: 5126)



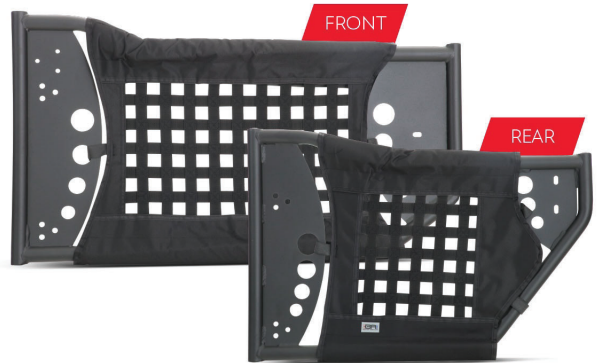
2018-2020

JL & JT GEN 3 TRAIL DOORS

PN: JL-6149 FRONT

PN: JL-6150 REAR

- Steel tube and plate construction
- Dual stage locking latch mechanism
- Nylon webbing with padded arm rest included
- Adjustable hinges and latch plate for easy installation
- Anti-rattle bump stops
- Two-stage powdercoat light texture finish in black
- Sold in pairs



2007-2018

JK GEN 3 TRAIL DOORS

PN: JK-6139 **FRONT**

PN: JK-6140 **REAR**

- Steel tube and plate construction
- Dual stage locking latch mechanism
- Nylon webbing with padded arm rest included
- Anti-rattle bump stops
- Adjustable hinges and latch plate for easy installation
- Two-stage powdercoat light texture finish in black
- Sold in pairs



1997-2006

TJ & LJ GEN 3 TRAIL DOORS

PN: TJ-6137 **FRONT**

- Steel tube and plate construction
- Dual stage locking latch mechanism
- Nylon webbing with padded arm rest included
- Anti-rattle bump stops
- Adjustable hinges and latch plate for easy installation
- Two-stage powdercoat light texture finish in black
- Sold in pairs



MIRROR SET FOR TRAIL DOORS

PN: 5126

- Designed to be installed on Body Armor 4x4 trail doors
- Driver and passenger side included
- Stainless steel hardware included
- Can be adjusted to multiple positions



1997-2020

JEEP WRANGLER DOOR STORAGE BAR

PN: 5145 **NEW**

- 1" Square tube and 4mm steel plates
- Works with both factory and aftermarket doors
- Fits TJ, JK, JL, and JT models
- Holds up to two doors – front or rear
- Includes mounting hardware to mount on wall
- Two-stage gloss black powdercoat

JEEP
WRANGLER JL
GLADIATOR JT
BUMPERS



2018-2020 JEEP JL & JT
FULL WIDTH FRONT BUMPER

PN: JL-19534 **NEW**



- Full width design
- 3/16" steel plate
- Fits factory fog lights (except steel bumper pkg)
- Two welded D-ring mounts
- 12,000 LB winch capacity (fits warn zeon winches)
- Optional grill guards (JL-5124 or JL-5125) and skid plate available (JL-5123)
- Two-stage powdercoat light texture finish in black

2018-2020 JEEP JL & JT
MID-STUBBY FRONT BUMPER

PN: JL-19532

- Mid-width design allowing clearance for larger tires
- 3/16" steel plate
- Fits factory fog lights (except steel bumper pkg) or LED cube lights
- Two-stage powdercoat light texture finish in black
- Two welded D-ring mounts
- 12,000 LB winch capacity (fits warn zeon winches)
- Optional grill guards (JL-5124 or JL-5125) and skid plate available JL-5123)





2018-2020 WRANGLER JL FULL WIDTH REAR BUMPER W/ TIRE CARRIER MOUNT

PN: JL-2965

- 3/16" steel plate construction
- Wrap around design fits both factory and aftermarket flares
- Bolt on license plate frame with DOT approved light
- Optional tire carrier (PN: 5298) available separately
- Retains OEM tow hitch
- Accommodates rear parking sensors
- LED cube light cutouts



2018-2020 JEEP JL & JT TUBE GRILL GUARD

PN: JL-5124

- 2" steel tube construction
- Bolt on design for all Body Armor JL front bumper
- Welded adjustable light mount
- Two-stage powdercoat light texture finish in black



2018-2020 JEEP JL & JT FABRICATED GRILL GUARD

PN: JL-5125

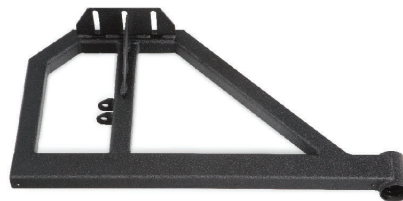
- 3/16" steel plate construction
- Bolt on design for all Body Armor JL front bumpers
- 20" single row light opening
- Two-stage powdercoat light texture finish in black



2018-2020 JEEP JL & JT FRONT BUMPER SKID PLATE

PN: JL-5123

- 3/16" steel plate
- Bolt on design for all body armor 4x4 JL front bumpers
- Two-stage powdercoat light texture finish in black
- Protects under carriage and electronic sway bar disconnect on Rubicon models



2018-2020 JEEP WRANGLER JL TIRE CARRIER SINGLE ACTION

PN: 5298

- Works with JL-2965 bumper
- Steel tube construction
- HD dual bearing pivot assembly
- Single action opening and closing with the tailgate
- Tire capacity 40"
- Retains OE camera and third brake light

JEEP
WRANGLER JK
BUMPERS



2007-2018 JEEP WRANGLER JK
FRONT BUMPER FULL WIDTH

PN: JK-19531



- High clearance design
- Integrated winch plate
- 2" diameter center hoop with light tabs
- Dual shackle plates for D-rings
- Dual process black powder coat finish
- Light mounting holes on bumper wings



2007-2018 JEEP WRANGLER JK FRONT BUMPER MID STUBBY

PN: JK-19532

- 3/16" thick steel plate with 1/4" thick steel plate material
- Integrated winch plate with gussets allows for up to a 12,000 LB winch
- Bolt on center hoop included
- Vacuum pump stays in factory position
- Light fitment: 3 light tabs on the hoop, 2 light holes on the wings, 2 light tabs for fogs

2007-2018 JEEP WRANGLER JK FRONT BUMPER SKID PLATE

PN: JK-5123

- Attaches crash bar under front bumper
- Works with plastic OEM bumper
- Holds up to the rigors of the trail
- No drill installation
- Dual process black powder coat finish
- Kick down plate to protect sway bar disconnect module



2007-2018 JEEP WRANGLER JK FULL WIDTH REAR BUMPER W/ TIRE CARRIER MOUNT

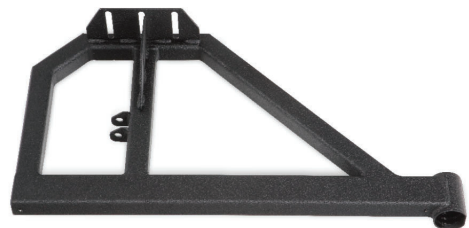
PN: JK-2965

- 3/16" steel plate construction
- High clearance design
- Optional tire carrier (PN: 5297) available separately
- Retains OEM tow hitch
- LED cube light cutouts

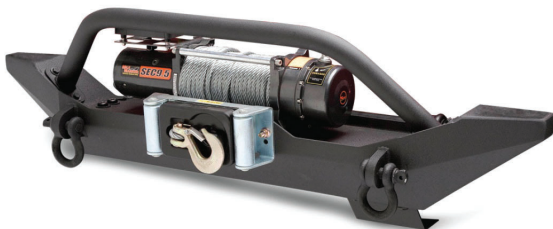
2007-2018 JEEP WRANGLER JK TIRE CARRIER SINGLE ACTION

PN: 5297

- Works with JK-2965 bumper
- Steel tube construction
- HD dual bearing pivot assembly
- Single action opening and closing with the tailgate
- Tire capacity 40"
- Does not accommodate factory third brake light
- Two-stage powdercoat heavy texture finish in black



JEEP WRANGLER TJ BUMPERS



1987-2006 JEEP WRANGLER TJ FRONT BUMPER

PN: TJ-19531

- 3/16" steel integrated winch plate
- Single 2 hoop with two light tabs
- Skid plate for steering box
- Dual shackle plates for D-rings
- Two-stage powdercoat heavy texture finish in black

JEEP RACK SYSTEMS



2007-2020 JEEP WRANGLER JK & JL HARDTOP ROOF RACK

PN: 5160 **NEW**



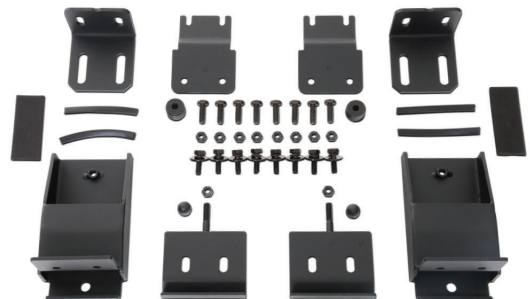
- 14 gauge steel plate
- Easy no-drill design
- Required mounting brackets JK-6121 or JL-6121
- Fits both 2 door and 4 door models
- Sits approx. 8 inches above your OE hardtop
- Weight capacity 150 LBS
- Two-stage coating finished in a light texture powder coat
- Light fitment: 50" dual row LED front or multi-light mount, 4 cube LEDs sides, 2 cube LEDs rear

2007-2020 JEEP WRANGLER JK & JL ROOF RACK MOUNTING HARDWARE

PN: JL-6121 **NEW**

PN: JK-6121 **NEW**

- Roof rack mounting brackets for 5160 rack
- Mounting brackets for Jeep JK or Jeep JL
- Fits both 2 door and 4 door models
- Weight capacity 150 LBS
- Two-stage coating finished in a light texture powder coat





2007-2020 JEEP WRANGLER JK & JL UNLIMITED INTERIOR CARGO RACK

PN: 5147 **NEW**

- Fits JK and JL models
- Fits 4 door models only
- Easy bolt in design
- 150 LB weight capacity
- Works with hardtop, soft top (lose retract feature) or no top
- 22" clearance below rack (JL model)
- Side slots for tie down points
- Cargo area 40.5" x 19.25"

2007-2018 JEEP WRANGLER JK CARGO ROOF RACK

PN: JK-6124-1 & PN: JK-6125-2 **2 DOOR**

- Constructed from 2" steel tubing and finished in durable black texture powder coat
- Bolt on installation with all BA bumpers
- Fits factory bumper with modifications
- Rack allows full use of factory soft top
- Easily remove hard top and/or freedom panels
- Pre-drilled for optional basket
- Light fitment: 4 light tabs front, 2 light tabs rear



2007-2018 JEEP WRANGLER JK CARGO ROOF RACK

PN: JK-6124-1 & PN: JK-6124-2 **4 DOOR**

- Constructed from 2" steel tubing and finished in durable black texture powder coat
- Bolt on installation with all BA bumpers
- Fits factory bumper with modifications
- Rack allows full use of factory soft top
- Easily remove hard top and/or freedom panels
- Pre-drilled for optional basket
- Light fitment: 4 light tabs front and 2 light tabs rear



1997-2018 JEEP WRANGLER TJ & JK CARGO RACK BASKET

PN: 5124

- 1.25" steel tube
- Fits TJ and JK cargo rack systems
- Two-stage heavy texture powdercoat finish in black
- Static load capacity 200 LB evenly distributed





1997-2006 JEEP WRANGLER TJ CARGO ROOF RACK

PN: TJ-6124-1 & PN: TJ-6125-2

- 2" .120 wall steel tube
- Comes with front and rear crossbars
- Simple bolt together design
- Requires TJ-6124-1 to complete rack
- Two-stage powdercoat heavy texture finish in black

2004-2006 JEEP WRANGLER LJ CARGO ROOF RACK

PN: TJ-6124-1 & PN: TJ-6124-2 UNLIMITED

- 2" .120 wall steel tube
- Comes with front and rear crossbars
- Simple bolt together design
- Requires TJ-6124-1 to complete rack
- Two-stage powdercoat heavy texture finish in black





JEEP
SIDE BARS



2019-2020 JEEP GLADIATOR JT ROCKCRAWLER SIDE STEPS

PN: JT-4121 4 DOOR **NEW**

- 2" x 3" steel tube construction with a 1.5" kickout tube
- Wheel to wheel protection accommodating large tire sizes
- Easy installation using factory rock rail mounts
- Two-stage powdercoat light texture finish in black

2018-2020 JEEP WRANGLER JL ROCKCRAWLER SIDE STEPS

PN: JL-4121 4 DOOR

PN: JL-4122 2 DOOR

- 2" x 3" steel tube construction with a 1.5" kickout tube
- Wheel to wheel protection accommodating large tire sizes
- Easy installation using factory rock rail mounts
- Two-stage powdercoat light texture finish in black





2007-2018 JEEP WRANGLER JK ROCKCRAWLER SIDE STEPS

PN: JK-4121 4 DOOR

PN: JK-4122 2 DOOR

- Added protection for the extreme user
- Wheel well to wheel well Body Armor protection
- No drill frame mount installation
- 2" x 3" tube combined with kick out rail
- Dual process black powder coat finish

2007-2018 JEEP WRANGLER JK ROCKSTEPS

PN: JK-4123 4 DOOR

- Unique design features slider protection with step area
- 3/16" thick steel plate with dual process textured black powdercoat
- No-drill design aligns to factory holes in the pinch welds
- Step Pads included for additional grip





1997-2006 JEEP WRANGLER TJ ROCKCRAWLER SIDE STEPS

PN: TJ-4121

- Added protection for the extreme user
- Wheel well to wheel well body armor protection
- No drill chassis mount installation
- 2" x 3" tube combined with kick out rail
- Dual process black powder coat finish

2004-2006 JEEP WRANGLER LJ ROCKCRAWLER SIDE STEPS

PN: WJ-4121 UNLIMITED

- Added protection for the extreme user
- Wheel well to wheel well body armor protection
- No drill chassis mount installation
- 2" x 3" tube combined with kick out rail
- Dual process black powder coat finish



2004-2006 JEEP WRANGLER LJ EXTREME ROCK RAIL

PN: TJ-5321 UNLIMITED

- Designed for hardcore rock crawler
- Mounts directly to body
- Back plate rolls under the body for added protection
- Kick out rail for added protection
- Requires rive-nuts
- Drilling is required
- Black textured powder coat finish



1997-2006 JEEP WRANGLER TJ TUB RAILS

PN: TJ-4322

- Designed to protect tub rails
- Installs above the rear fender flares
- Requires drilling for installation
- Solid installation
- Dual process black powder coat finish
- Provides protection for the tub





2007-2018 WRANGLER JK
FUEL DOOR COVER

PN: JK-5146 **NEW**

- Aluminum cover with an abs base
- Easy no drill installation
- No rattle cam-action hinge
- Black powdercoat with stainless hardware
- Non-locking gas door

1986-2020 WRANGLER
LED 3RD BRAKE LIGHT

PN: 5165 **NEW**

- Fits YJ, TJ, JK and JL models
- Works with most wheel sizes 16" or larger
- Fits bolt patterns 5x4,5, 5x5, and 5x5,5
- Easy installation splicing into OE wiring (connectors included)
- 85 individual 5-watt LEDs
- IP67 waterproof rated





2007-2020 WRANGLER & GLADIATOR HINGE STEPS

PN: 5146 **NEW**

- Fits Jeep® JK, JL, and JT models
- 350 LB load limit
- Easy no drill installation
- 1/8 steel plate; two-stage light texture powdercoat
- Non-slip serrated step pad
- Includes new hardware and rubber pads to protect paint
- Built-in bottle opener

2007-2018 WRANGLER JK BOLT ON MULTI-POINT HANDLE

PN: 5143

- Nylon webbing and heavy duty steel grommets
- Versatile mounting options including:
 - » Front pillars, headrest and rear roll bar
- Fits factory mounting points
- Anti-slip handle grips
- Sold in pairs



1987-2018 JEEP WRANGLER ELEVATED THIRD BRAKE LIGHT

PN: JK-5120

- Bolts to existing holes in the tailgate
- Can be seen over 37" Tires
- Utilizes DOT LED light for better visibility
- Can be installed on YJ, TJ, and JK models

2007-2018 WRANGLER JK TAIL LIGHT GUARD

PN: JK-7135

- Rugged textured black finish
- Sold in pairs
- Wrap around design
- Added protection for expensive taillights
- Dual process black powdercoat finish





2007-2018 JEEP WRANGLER JK WINDSHIELD LIGHT BAR

PN: JK-6126

- Diameter tubular light bar
- Light fitment: 4 light tabs
- Bolt on installation
- Dual process black powder coat finish

CHEVY





CHEVROLET SILVERADO

BUMPERS



2019-2020 CHEVY SILVERADO 1500 AMBUSH SERIES FRONT BUMPER

PN: GM-19344 **NEW**



- 3/16" and 1/4" cold roll steel
- Easy bolt on installation
- OE sensor compatible
- Two welded D-ring mounts
- Non-winch compatible
- Two-stage light texture finished in black
- Diesel motor required intercooler shroud (PN: GM-5966)
- Light fitment: 30" dual row LED bar and 2 cube LEDs

2019-2020 CHEVY SILVERADO 1500
AMBUSH SERIES REAR BUMPER

PN: GM-2966 **NEW**



- 3/16" and 1/4" cold roll steel
- Easy bolt on installation
- OE sensor compatible
- Two welded D-ring mounts
- Non-winch compatible
- Two-stage light texture finished in black
- Light fitment: 2 cube LEDs





2016-2018 CHEVY SILVERADO 1500 ECO SERIES FRONT BUMPER

PN: GM-19336

- 1/8" thick steel plate
- Add aggressive style without weighing down the vehicle
- Easy bolt on installation
- Non-winch capable
- OE sensor compatible
- Light fitments: 20" dual row LED middle and 4 cube LEDs

2014-2015 CHEVY SILVERADO 1500 ECO SERIES FRONT BUMPER

PN: GM-19335

- 1/8" thick steel plate
- Add aggressive style without weighing down the vehicle
- Easy bolt on installation
- Non-winch capable
- OE sensor compatible
- Light fitments: 20" dual row LED middle and 4 cube LEDs



2007-2013 CHEVY SILVERADO 1500 ECO SERIES FRONT BUMPER

PN: GM-19343

- 1/8" thick steel plate
- Add aggressive style without weighing down the vehicle
- Easy bolt on installation
- Non-winch capable
- OE sensor compatible
- Light fitments: 20" dual row LED middle and 4 cube LEDs



2007-2018 CHEVY SILVERADO 1500 ECO SERIES REAR BUMPER

PN: GM-2961

- 1/8" steel plate
- Retains factory tow hitch
- Built in step pockets for easy bed access
- OE sensor compatible
- Light fitment: 4 cube LED





2014-2015 GMC 1500
ECO SERIES FRONT BUMPER

PN: GM-19337

- 1/8" thick steel plate
- Add aggressive style without weighing down the vehicle
- Easy bolt on installation
- Non-winch capable
- OE sensor compatible
- Light fitment: 20" dual row LED middle and 4 cube LEDs

2007-2018 GMC 1500
ECO SERIES REAR BUMPER

PN: GM-2961

- 1/8" steel plate
- Retains factory tow hitch
- Built in step pockets for easy bed access
- OE sensor compatible
- Light fitment: 4 cube LED

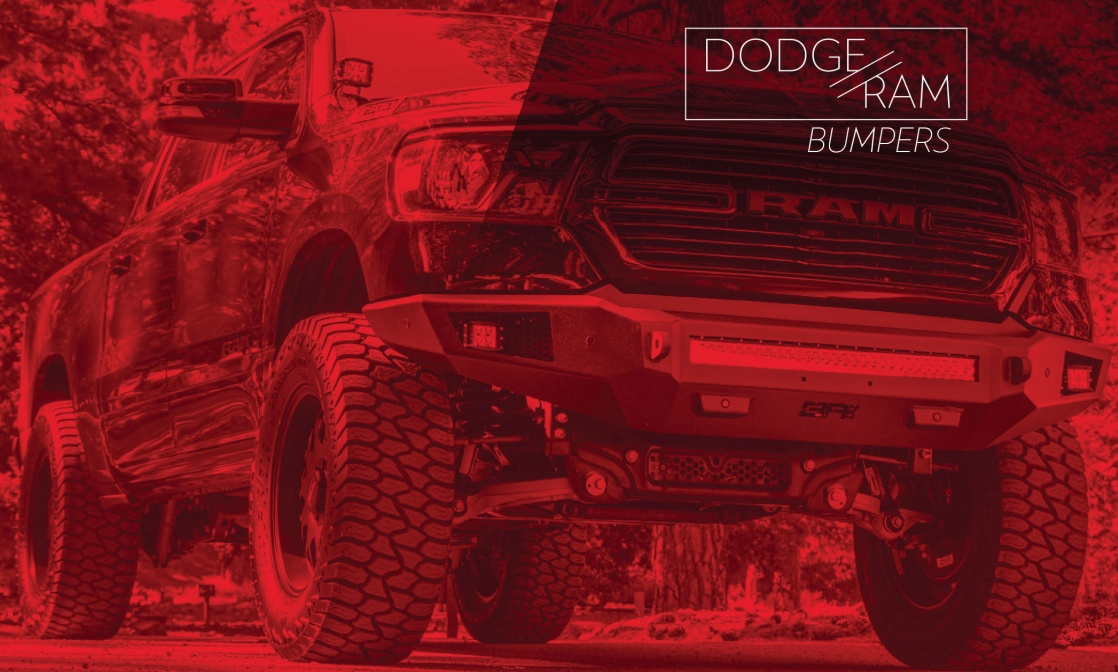


DODGE





DODGE
RAM
BUMPERS



2019-2020 DODGE RAM 1500
AMBUSH SERIES FRONT BUMPER

PN: DG-19343 **NEW**



- 3/16" and 1/4" cold roll steel
- Easy bolt on installation
- OE sensor compatible
- Two welded D-ring mounts
- Non-winch compatible
- Two-stage light texture finished in black
- Removable mesh insert for 30" LED Light bar
- Light fitment: 30" dual row LED bar and 2 cube LEDs
- Does not fit Rebel or Eco Diesel models

2019-2020 DODGE RAM 1500
AMBUSH SERIES REAR BUMPER

PN: DG-2966 **NEW**

- 3/16" and 1/4" cold roll steel
- Easy bolt on installation
- OE sensor compatible
- Two welded D-ring mounts
- Non-winch compatible
- Two-stage light texture finished in black
- Light fitment: 2 cube LEDs





2013-2018 DODGE RAM 1500
ECO SERIES FRONT BUMPER

PN: DG-19339

- 1/8" thick steel plate
- Add aggressive style without weighing down the vehicle
- Easy bolt on installation
- Non-winch capable
- OE sensor compatible
- Light fitment: 20" dual row LED middle and 4 cube LEDs
- Does not fit rebel models

2009-2018 DODGE RAM 1500
ECO SERIES REAR BUMPER

PN: DG-2964

- 1/8" steel plate
- Retains factory tow hitch
- Built in step pockets for easy bed access
- OE sensor compatible
- Light fitment: 4 cube LEDs



2013-2018 DODGE RAM 2500/3500
ECO SERIES FRONT WINCH BUMPER

PN: DG-19338

- 1/8" steel plate with 1/4" winch plate for strength
- 12,000 LB winch capacity
- OE sensor compatible
- Easy bolt on installation
- Light fitment: 30" dual row LED middle and 4 cube LEDs

2010-2018 DODGE RAM 2500/3500
ECO SERIES REAR BUMPER

PN: DG-2963

- 1/8" thick steel plate
- Retains factory tow hitch
- Built in step pockets for easy bed access
- OE sensor compatible
- Light fitment: 4 cube LEDs



FORD





FORD
BUMPERS



2018-2020 FORD F-150
AMBUSH SERIES FRONT BUMPER

PN: FD-19342 **NEW**



- 3/16" and 1/4" cold roll steel
- Easy bolt on installation
- OE sensor compatible
- Two welded D-ring mounts
- Non-winch compatible
- Two-stage light texture finished in black
- Does not accommodate adaptive cruise control
- Light fitment: 30" dual row LED bar and 2 cube LEDs

2018-2020 FORD F-150
AMBUSH SERIES REAR BUMPER

PN: FD-2967 **NEW**

- 3/16" and 1/4" cold roll steel
- Easy bolt on installation
- OE sensor compatible
- Two welded D-ring mounts
- Non-winch compatible
- Two-stage light texture finished in black
- Light fitment: 2 cube LEDs



2015-2017 FORD F-150
ECO SERIES FRONT BUMPER

PN: FD-19336



- 1/8" thick steel plate
- Add aggressive style without weighing down the vehicle
- Easy bolt on installation
- Non-winch capable
- OE sensor compatible
- Light fitment: 20" dual row LED middle and 4 cube LEDs

2015-2019 FORD F-150
ECO SERIES REAR BUMPER

PN: FD-2962

- 1/8" thick steel plate
- Retains factory tow hitch
- Built in step pockets for easy bed access
- OE sensor compatible
- Light fitment: 4 cube LEDs





2009-2014 FORD F-150 ECO SERIES FRONT BUMPER

PN: FD-19337

- 1/8" thick steel plate
- Add aggressive style without weighing down the vehicle
- Easy bolt on installation
- Non-winch capable
- OE sensor compatible
- Light fitment: 20" dual row LED middle and 4 cube LEDs

2009-2014 FORD F-150 & RAPTOR ECO SERIES REAR BUMPER

PN: FD-2963

- 1/8" steel plate
- Retains factory tow hitch
- Built in step pockets for easy bed access
- OE sensor compatible
- Light fitment: 4 cube LEDs





2017-2019 FORD F-250/F-350
ECO SERIES FRONT WINCH BUMPER

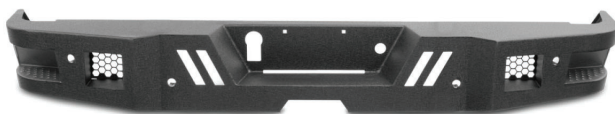
PN: FD-19341

- 1/8" steel plate with 1/4" winch plate for strength
- 12,000 LB winch capacity
- OE sensor compatible
- Easy bolt on installation
- Light fitment: 30" dual row LED middle and 4 cube LEDs

2017-2019 FORD F-250/F-350
ECO SERIES REAR BUMPER

PN: FD-2966

- 1/8" steel plate
- Retains factory tow hitch
- Built in step pockets for easy bed access
- OE sensor compatible
- Light fitment: 4 cube LED



2011-2015 FORD F-250/F-350
ECO SERIES FRONT WINCH BUMPER

PN: FD-19338

- 1/8" steel plate with 1/4" winch plate for strength
- 12,000 LB winch capacity
- OE sensor compatible
- Easy bolt on installation
- Light fitment: 30" dual row LED middle and 4 cube LEDs

1999-2016 FORD F-250/F-350
ECO SERIES REAR BUMPER

PN: FD-2964

- 1/8" steel plate
- Retains factory tow hitch
- Built in step pockets for easy bed access
- OE sensor compatible
- Light fitment: 4 cube LED



TOYOTA





TOYOTA TACOMA BUMPERS



2016-2020 TOYOTA TACOMA HILINE FRONT WINCH BUMPER

PN: TC-19339



- 3/16" plate bumper and 1/4" winch mount
- High clearance design that accommodates factory TRD skid plate
- Requires trimming of factory bumper
- 10,000 LB winch capacity (fits warn zeon winches)
- Two-stage powdercoat light texture finish in black
- Light fitment: 20" dual row LED

2016-2020 TOYOTA TACOMA PRO SERIES FRONT WINCH BUMPER

PN: TC-19338

- 3/16" plate bumper and 1/4" winch mount
- High clearance design that accommodates factory TRD skid plate
- Requires trimming of factory bumper
- 10,000 LB winch capacity (fits warn zeon winches)
- Two-stage powdercoat light texture finish in black
- Light fitment: 30" dual row LED and 2 cube lights





2016-2020 TOYOTA TACOMA DESERT SERIES FRONT WINCH BUMPER

PN: TC-19337

- Two piece construction with subframe winch mount
- Tubular frame with sheet metal support
- Step corners for easy bed access
- Tail corners keep the OE vehicle lines
- Works with OEM receiver
- Two-stage powdercoat heavy texture finish in black
- Light fitment: 18" single row LED front and 4 cube lights

2012-2015 TOYOTA TACOMA FRONT WINCH BUMPER

PN: TC-19336

- 3/16" steel plate with a 1/4" thick winch tray
- 10,000 LB winch capacity
- Light fitment: up to 4" round after market lights
- Two-stage powdercoat heavy texture finish in black



2005-2011 TOYOTA TACOMA FRONT WINCH BUMPER

PN: TC-19335

- 3/16" Steel with 1/4" integrated steel winch plate
- Up to 10,000 LB Low profile winch capacity
- Dual shackle plates for D-rings
- Two-stage powdercoat heavy texture finish in black
- Light fitment: Front 4" round lights

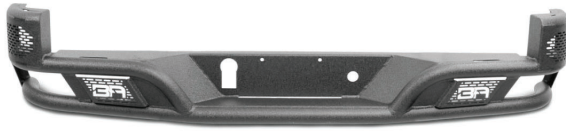


2016-2020 TOYOTA TACOMA PRO SERIES REAR BUMPER

PN: TC-2963

- 3/16" steel plate
- Does not fit blind spot monitors
- Includes parking sensor cutouts
- Bolt on installation
- Works with OEM receiver
- Two-stage powdercoat light texture finish in black
- Light fitment: two cube lights (flush mount or standard)





2016-2020 TOYOTA TACOMA DESERT SERIES REAR BUMPER

PN: TC-2962

- Tubular and sheet metal design
- Step corners for easy bed access
- Provides superior strength over OEM rear bumper
- Two-stage powdercoat heavy texture finish in black
- Requires OE receiver for installation
- Light fitment: 2 cube lights

2005-2015 TOYOTA TACOMA REAR BUMPER

PN: TC-2961

- 3/16" steel
- No drill installation
- Works with OEM receiver
- License plate relocation included
- Works with TC-5293 tire carrier
- Two-stage powdercoat heavy texture finish in black



2005-2015 TOYOTA TACOMA PRO SERIES TIRE CARRIER

PN: TC-5293

- 2" square tube design
- Attaches to Tacoma rear bumper TC-2961 only
- Carries up to 35" tall tire
- Easy no drill installation
- Two-stage powdercoat heavy texture finish in black
- Retains shackle plate for D-rings



TOYOTA TACOMA RACKS SYSTEMS

BODYARMOR4X4.COM



2016-2020 TOYOTA TACOMA OVERLAND RACK

PN: TC-6125

- Fits 5'5" beds
- Bolt on installation using factory mounts
- Includes two accessory mounts (PN: TC-6126)
- Allows the use of factory bed rails
- Mounts fit most universal roof-top tents
- Two-stage powdercoat light texture finish in black



OVERLAND RACK ACCESSORY MOUNT

PN: TC-6126

- Universal overland rack accessory mount fits TC-6125 rack
- Allows multiple cargo configurations
- Sold in singles
- Two-stage powdercoat light texture finish in black



ROTO-PAX TIRE CARRIER MOUNT

PN: 5132

- Roto-pax gas can cradle
- For use with swing arms TC-5293/TN-5293
- Does not include cans
- Dual process black powder coat finish

2005-2015 TOYOTA TACOMA CREW CAB SPORT RACK

PN: TC-6124 & PN: 5129

- Bolt together design
- Requires 5129 Cab basket
- Attaches to Track system and front bed mounts
- No drill installation
- Two-stage powdercoat heavy texture finish in black



TOYOTA
4RUNNER
BUMPERS



2014-2020 TOYOTA 4RUNNER
HILINE FRONT WINCH BUMPER

PN: TR-19339

- 3/16" plate bumper and 1/4" winch mount
- High clearance design that accommodates factory TRD skid plate
- Removable bull bar to accommodate 2020 models with safety sense
- Requires trimming of factory bumper
- 10,000 LB winch capacity
- Two-stage light texture finish in black
- Does not fit the Nighshade model and limited model
- Light fitment: 20" dual row LED



TOYOTA TUNDRA BUMPERS



2014-2019 TOYOTA TUNDRA ECO SERIES FRONT WINCH BUMPER

PN: TN-19336

- 1/8" steel plate with 1/4" winch plate for strength
- 12,000 lb winch capacity
- OE sensor compatible
- Easy bolt on installation
- Light fitment: 30" dual row LED middle and 4 cube LEDs

2014-2019 TOYOTA TUNDRA ECO SERIES REAR BUMPER

PN: TN-2962

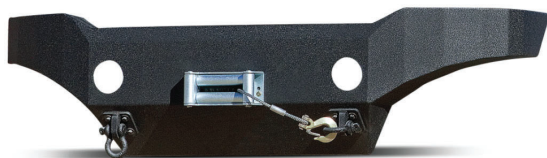
- 1/8" steel plate
- Retains factory tow hitch
- Built in step pockets for easy bed access
- OE sensor compatible
- Light fitment: 4 cube LED



2007-2013 TOYOTA TUNDRA FRONT WINCH BUMPER

PN: TN-19335

- 3/16" thick steel plate construction
- Sub-frame winch plate with 12,000 LB capacity
- Reuse OEM fog light option
- High clearance design for off road performance
- Dual process black powder coat finish
- Wings wrap around to fender
- Bumper sticks out only 2" further than stock
- Bolt on installation no drilling required





2007-2013 TOYOTA TUNDRA REAR BUMPER

PN: TN-2961

- 3/16" steel plate construction
- Bolt on installation includes hardware
- Dual shackle plates for D-rings tie to frame rails
- License plate pocket reuse OEM lights
- Dual process black powder coat finish
- Retain OEM tow hitch
- Can mount TN-5293 swing arm tire carrier



TOYOTA
FJ CRUISER
BUMPERS



2007-2014 TOYOTA FJ CRUISER FRONT WINCH BUMPER

PN: FJ-19336

- 3/16" steel plate construction
- Sub-frame winch mount plates mount directly to frame
- Up to 10,000 LB low profile winch capacity
- Dual process black powder coat finish
- Shackle plates tie into frame rails
- Light fitment: 4" light pockets for additional lights
- No drill installation

2007-2014 TOYOTA FJ CRUISER REAR BUMPER

PN: FJ-2961

- 3/16" Cold rolled steel plate construction
- Dual shackle plates tie to frame brackets
- Will allow for TC-5293 swing arm
- Stronger than OEM bumper
- Dual process black powder coat finish
- Easy at home installation with only hand tools
- Return OEM tow hitch





2005-2015 TOYOTA TACOMA TAIL LIGHT GUARD

PN: TC-7136

- Added protection for expensive taillights
- Most are no drill installation
- Contoured to the specific vehicle taillight
- Two-stage powdercoat heavy texture finish in black

2007-2014 TOYOTA FJ CRUISER TAIL LIGHT GUARD

PN: FJ-7135

- Added protection for expensive taillights
- Most are no drill installation
- Contoured to the specific vehicle taillight
- Dual process black powder coat finish



2007-2014 TOYOTA FJ CRUISER ROCK STEP

PN: FJ-4122

- Step pads for front and rear passengers
- No drill frame mount installation
- Strong enough to act as a slider on the trail
- Dual process black powdercoat finish
- Easy at home installation with only hand tools



SKY RIDGE





TENTS AWNINGS



PIKE 2-PERSON TENT

PN: 20010



- The tent walls and roof are manufactured with 280GSM ripstop reinforced polyester/cotton canvas, polyurethane coated for 2000mm waterproofing
- The separate rain fly is manufactured from 420D polyester oxford fabric, polyurethane coated for 2500mm waterproofing
- A heavy-duty travel cover protects the tent and components when folded and not in use. The cover is made of sturdy, UV resistant 680GDM/1200D PVC coated tarpaulin material with heavy duty zippers
- Adjust privacy, natural light, and airflow with the covered entrance, skylight and three large view windows with mosquito netting, exterior awnings, and interior zip-up closures
- Made entirely of corrosion-resistant materials including aircraft-grade 6061 aluminum framing and marine grade stainless steel hinges and hardware
- Easy for a single person to quickly set up and take down without tools
- Heavy-duty telescoping aluminum ladder extends to 90.55" (60mm) maximum length to accommodate virtually any vehicle height or camping on uneven terrain
- The folding tent base is made of sturdy aluminum structural tubing with an insulated core and scratch resistant aluminum deck to provide a solid platform
- Comfortable sleeping accommodations for up to two persons on the 60mm thick (2.4") high density foam mattress with removable/washable cover

PIKE ANNEX ROOM

PN: 20015

- Annex walls are made of 420D ripstop polyester oxford fabric, polyurethane coated for 2500mm waterproofing
- Annex floor is made of 550GSM PVC coated waterproof fabric with heavy duty weather resistant zipper
- The annex may be set up with or without the floor installed
- Adds over 42 square feet of downstairs living space to the pike rooftop tent
- Creates a convenient room for changing clothes, removing muddy boots, storing gear, cooking, or lounging, or additional sleeping space
- Entry door and two large windows with mosquito netting and solid flaps; a "back door" provides access to the vehicle's side door or truck bed



PIKE AWNING

PN: 20020

- Easily mounts to virtually any roof rack or bed rack
- Awning is made of 4420D ripstop polyester oxford fabric, polyurethane coated for 2500mm waterproofing
- Provides 43 square feet of covered space for shade, lounging, cooking, etc.
- Self-contained unit includes rugged, light-weight extruded aluminum telescopic legs and arms, with twist-lock fixtures
- The heavy-duty travel cover is made of sturdy, UV resistant 680GSM/1200D PVC coated tarpaulin material with heavy-duty zippers
- Stakes and tie-down straps are included to secure the awning for use in windy and inclement conditions

PIKE SPECIFICATIONS

SPECS	PIKE 2-PERSON TENT 20010	PIKE ANNEX ROOM 20015	PIKE AWNING 20020
PART NUMBER	20010	20015	20020
OPEN SIZE	48" X 110" X 50"	83.5" X 73.6" X 74.80" high	79" X 79"
CLOSED SIZE	48" X 43" X 12"	N/A	79" X 4" X 4"
WEIGHT	108 lbs.	13.0 lbs.	20 lbs.
PACKAGE DIMENSIONS	49" X 46" X 12"	21" X 18" X 7.9"	81" X 5" X 5"
SHIPPING WEIGHT	119 lbs. (54kg)	17.6 lbs. (8kg)	24 lbs. (10.9kg)
LOAD CAPACITY	460 lbs. (208.6kg)	N/A	N/A
LADDER MAX. LENGTH	90.55" (2.5m)	N/A	N/A
MATTRESS THICKNESS	2.36" (60mm)	N/A	N/A
WATER COLUMN	2500mm	2500mm	2500mm
TOP MATERIAL	420D Rip-Stop Poly Oxford, waterproof PU coating (Light Grey)	420D Rip-Stop Poly Oxford, waterproof PU coating	420D Rip-Stop Poly Oxford, waterproof PU coating
BASE	Welded aluminum tube with insulation and anti-scratch aluminum sheet	550gsm PVC with SBS water resistant zipper	N/A
RAIN FLY	420D Rip-Stop Poly Oxford, waterproof PU coating	N/A	N/A
TRAVEL COVER	Heavy duty 680g/1200D PVC UV protection	N/A	Heavy duty 680g/1200D PVC UV protection
WARRANTY	24 months; see warranty page for details	24 months; see warranty page for details	24 months; see warranty page for details

LEVELING KIT PRODUCTS



2019+ SUBARU FORESTER 2 INCH LEVEL KIT

PN: 50306-SU **NEW**

- Stock ride quality
- 2.5" front and 1.5" rear lift
- Front spacers correct caster and camber
- Fits 225/65-17 tires with no trimming

2015-2019 SUBARU OUTBACK 2 INCH LEVEL KIT

PN: 50307-SU **NEW**

- 2.5" front and 1.5" rear lift
- Stock ride quality
- Front spacers correct caster and camber
- Includes limited edition auto headlight relocations brackets
- Fits 235/65-17 tires minor trimming may be required on certain wheel offsets



2018+ SUBARU CROSTREK 2 INCH LEVEL KIT

PN: 50308-SU **NEW**

- 2.5" front and 1.5" rear lift
- Front spacers correct caster and camber
- Stock ride quality
- Fits 215/75-15 tires with no trimming
- Larger 235/75 can fit with minor modification



TORSION KEYS

PN: SEE GUIDE

- Bolt on installation
- Additional ground clearance
- 4140 forged steel
- Shock extenders included where applicable

REAR BLOCK & U-BOLT KIT

PN: SEE GUIDE

- Bolt on installation
- Stock ride quality
- Fits larger wheels and tires



COIL SPACERS

PN: SEE GUIDE

- Bolt on installation
- Stock ride quality
- Fits larger wheels and tires
- Shock extenders included where applicable

STRUT SPACERS

PN: SEE GUIDE

- Bolt on installation
- Stock ride quality
- Fabricated from 1/4" steel and uses grade 10 hardware
- Fits larger wheels and tires



APPLICATION GUIDE

DODGE / RAM

YEAR	MODEL	DRIVE	LIFT	SKU	POSITION	TIRE SIZE	PRODUCT TYPE
02-05	RAM 1500	4WD	1-3"	506010-DG	FRONT	35"	KEY
06-12 & 19-20	RAM 1500 06-12 4WD ONLY 19-20 4WD/2WD MODELS (EXCEPT REBEL AND AIR SUSPENSION MODELS)	4WD/2WD	2.5"	505072-DG	FRONT	35"	STRUT SPACERS
13-18	RAM 1500 (EXCEPT REBEL AND AIR SUSPENSION MODELS)	4WD	2.5"	50307-DG	FRONT	35"	STRUT + COIL SPACERS
02-18	RAM 1500	2WD	2"	50205-DG	FRONT	33"	COIL SPRING
94-12	RAM 2500 / 3500	4WD	2.5"	50107-DG	FRONT	35"	COIL SPACERS
13-20	RAM 2500	2WD/4WD	2.0"	50208-DG	FRONT	35"	COIL SPACERS + SHOCK EXTENDERS
14-20	RAM 3500	2WD/4WD	2.0"	50208-DG	FRONT	35"	COIL SPACERS + SHOCK EXTENDERS

FORD

YEAR	MODEL	DRIVE	LIFT	SKU	POSITION	TIRE SIZE	PRODUCT TYPE
04-19	F-150 (EXCEPT RAPTOR)	2WD / 4WD	2.0"	50508-FD	FRONT	32"	STRUT SPACERS
09-20	F-150 (EXCEPT RAPTOR)	2WD / 4WD	2.5"	50507-FD	FRONT	33"	STRUT SPACERS
09-14	F-150 (EXCEPT RAPTOR)	2WD	3.0"	50506-FD	FRONT	33"	STRUT SPACERS
04-08	F-150	2WD / 4WD	2.5"	50507-FD	FRONT	33"	STRUT SPACERS
04-08	F-150	2WD / 4WD	3.0"	50506-FD	FRONT	35"	STRUT SPACERS
97-04	F-150 / HERITAGE	4WD	1-3"	506012-FD	FRONT	33"	KEYS
19-20	RANGER	2WD/4WD	2.5"	506013-FD	FRONT	32"	STRUT SPACERS
98-09	RANGER / EDGE	2WD/4WD	1-3"	506011-FD	FRONT	32"	KEYS
05-20	F-250 / F-350 (EXCLUDES TREMOR MODELS)	4WD	2.0"	50209-FD	FRONT	35"	COIL SPACERS
05-20	F-250 / F-350 (EXCLUDES TREMOR MODELS)	4WD	2.5"	50207-FD	FRONT	35"	COIL SPACERS / SHOCK EXTENDERS

GMC

YEAR	MODEL	DRIVE	LIFT	SKU	POSITION	TIRE SIZE	PRODUCT TYPE
04-12	CANYON (2WD TORSION)	2WD / 4WD	1-3"	506011-GM	FRONT	31"	KEY
15-20	CANYON	2WD / 4WD	2.5"	50307-GM	FRONT	31"	STRUT + COIL SPACERS
07-20	SIERRA 1500 / YUKON / YUKON XL (EXCEPT DENALI, AT4 OR MAGNARIDE SUSPENSION)	2WD / 4WD	2"	50209-GM	FRONT	32"	STRUT SPACERS
07-20	SIERRA / YUKON / YUKON XL (EXCEPT DENALI, AT4 OR MAGNARIDE SUSPENSION)	2WD / 4WD	2"	50508-GM	FRONT	32"	STRUT SPACERS
07-20	SIERRA / YUKON / YUKON XL (EXCEPT DENALI, AT4 OR MAGNARIDE SUSPENSION)	2WD	3"	50506-GM	FRONT	33"	STRUT SPACERS
14-18	SIERRA 1500	2WD / 4WD	1"	50502-GM	REAR		BLOCK & UBOLT
07-13 & 19-20	SIERRA 1500	2WD / 4WD	1"	50501-GM	REAR		BLOCK & UBOLT
99-06	SIERRA / YUKON / YUKON XL	2WD	2"	50205-GM	FRONT	32"	COIL SPRING
2020	2500HD / 3500HD (8 LUG)	4WD	1.5-2"	504014-GM	FRONT	35"	KEYS & SHOCK EXTENDERS
11-19	1500HD / 2500HD / 3500HD (8 LUG)	2WD / 4WD	1-3"	50401-GM	FRONT	33"	KEYS & SHOCK EXTENDERS
99-06	K1500 / YUKON (00-06 2WD/4WD)	4WD	1-3"	504011-GM	FRONT	33"	KEYS & SHOCK EXTENDERS
01-10	1500HD / 2500HD / 3500HD (8 LUG)	2WD / 4WD	1-3"	504012-GM	FRONT	33"	KEYS & SHOCK EXTENDERS

CHEVROLET

YEAR	MODEL	DRIVE	LIFT	SKU	POSITION	TIRE SIZE	PRODUCT TYPE
04-12	COLORADO (2WD TORSION)	2WD / 4WD	1-3"	506011-GM	FRONT	31"	KEY

15-20	COLORADO	2WD / 4WD	2.5"	50307-GM	FRONT	31"	STRUT+ COIL SPACERS
07-20	SILVERADO 1500 / AVALANCHE / TAHOE / SUBURBAN (EXCEPT TRAILBOSS MODELS OR MAGNARIDE SUSPENSION)	2WD / 4WD	2"	50209-GM	FRONT	32"	STRUT SPACERS
07-20	SILVERADO 1500 / AVALANCHE / TAHOE / SUBURBAN (EXCEPT TRAILBOSS MODELS OR MAGNARIDE SUSPENSION)	2WD / 4WD	2"	50508-GM	FRONT	32"	STRUT SPACERS
07-20	SILVERADO 1500 / AVALANCHE / TAHOE / SUBURBAN (EXCEPT TRAILBOSS MODELS OR MAGNARIDE SUSPENSION)	2WD	3"	50506-GM	FRONT	33"	STRUT SPACERS
14-18	SILVERADO 1500	2WD / 4WD	1"	50502-GM	REAR		BLOCK & UBOLT
07-13 & 19-20	SILVERADO 1500	2WD / 4WD	1"	50501-GM	REAR		BLOCK & UBOLT
2020	2500HD / 3500HD (8 LUG)	4WD	1.5-2"	504014-GM	FRONT	35"	KEYS & SHOCK EXTENDERS
11-19	1500HD / 2500HD / 3500HD (8 LUG)	2WD / 4WD	1-3"	50401-GM	FRONT	33"	KEYS & SHOCK EXTENDERS
99-06	SILVERADO / TAHOE / SUBURBAN (NEW BODY STYLE)	4WD	1-3"	504011-GM	FRONT	33"	KEYS & SHOCK EXTENDERS
01-10	1500HD / 2500HD / 3500HD (8 LUG)	2WD / 4WD	1-3"	504012-GM	FRONT	33"	KEYS & SHOCK EXTENDERS

JEEP

YEAR	MODEL	DRIVE	LIFT	SKU	POSITION	TIRE SIZE	PRODUCT TYPE
06-10	COMMANDER	2WD / 4WD	2.5"	50507-JP	FRONT	31"	STRUT SPACERS
05-10	GRAND CHEROKEE	2WD / 4WD	2.5"	50507-JP	FRONT	31"	STRUT SPACERS
07-18	WRANGLER JK	2WD / 4WD	2.5" F / 2" R	50110-JK	FRONT/REAR	35"	COIL SPACERS
07-18	WRANGLER JK	2WD / 4WD	2.5"	50107-JK	FRONT	35"	COIL SPACERS
07-18	WRANGLER JK	2WD / 4WD	2"	50108-JK	REAR		COIL SPACERS
07-20	WRANGLER JK / JL / GLADIATOR	2WD / 4WD	1.5"	50109-JK	FRONT	35"	COIL SPACERS
18-20	WRANGLER JL	4WD	2.5" F / 2" R	50110-JL	FRONT/REAR	35"	COIL SPACERS

NISSAN

YEAR	MODEL	DRIVE	LIFT	SKU	POSITION	TIRE SIZE	PRODUCT TYPE
04-19	TITAN (EXCEPT PRO 4X OR XD MODELS)	2WD / 4WD	2.5"	505072-NN	FRONT	33"	STRUT SPACERS
05-20	FRONTIER / XTERRA	2WD / 4WD	2.5"	50507-NN	FRONT	32"	STRUT SPACERS

SUBARU

YEAR	MODEL	DRIVE	LIFT	SKU	POSITION	TIRE SIZE	PRODUCT TYPE
19-20	SUBARU FORESTER	AWD	2" F / 1.5" R	50306-SU	FRONT/REAR	225/75R17	STRUT SPACERS
15-19	SUBARU OUTBACK	AWD	2" F / 1.5" R	50307-SU	FRONT/REAR	235/65R17	STRUT SPACERS
18-20	SUBARU CROSSTREK	AWD	2" F / 1.5" R	50308-SU	FRONT/REAR	215/75R15	STRUT SPACERS

TOYOTA

YEAR	MODEL	DRIVE	LIFT	SKU	POSITION	TIRE SIZE	PRODUCT TYPE
95-04	TACOMA	2WD / 4WD	2.5"	505072-TN	FRONT	32"	STRUT SPACERS
05-19	TACOMA (5 LUG)	2WD	2.5"	505071-TC	FRONT	31"	STRUT SPACERS
05-20	TACOMA	2WD / 4WD	2.5"	505073-TC	FRONT	32"	STRUT SPACERS
07-19	TACOMA (EXCLUDES 5-LUG MODELS)	2WD / 4WD	1"	505074-TC	REAR		BLOCK & UBOLT
15-20	4 RUNNER	4WD	2.5"	50507-T	FRONT	32"	STRUT SPACERS
07-20	TUNDRA	2WD / 4WD	2.5"	505073-TN	FRONT	33"	STRUT SPACERS
07-20	TUNDRA	2WD / 4WD	1"	505074-TN	REAR		BLOCK & UBOLT
99-06	TUNDRA	2WD / 4WD	3"	50506-TN	FRONT	33"	STRUT SPACERS

** Max Tire Size could require minor trimming or removal of factory mudguards based on rim choice. Most fitments base on 11.50 inch wide tire and 9 inch wide wheel with positive offset.



BLACK D-RING WITH RED ISOLATORS

PN: 3203

- 3/4" D-ring shackle
- 4.75 ton pull rating
- Threaded shaft for easy installation
- Isolators are removable and prevent rattle
- Durable texture black powdercoat finish with red isolators

RED D-RING WITH BLACK ISOLATORS

PN: 3204

- 3/4" D-ring shackle
- 4.75 ton pull rating
- Threaded shaft for easy installation
- Isolators are removable and prevent rattle
- Durable texture black powdercoat finish with black isolators





TRAIL GLOVES

PN: 3216 **LARGE PAIR**

PN: 3217 **X-LARGE PAIR** **NEW**

- Dual layer fingertip and knuckle reinforcement
- Touchscreen ready on index finger and thumb
- Dual-stitched anti-slip palm patch
- Machine washable
- Neoprene, PVC, and nylon mixture

BACKBONE HITCH SKID

PN: 5136

- Easy to install, no tools required
- Protect your hitch, trailer wiring, and rear bumper
- Adds a secure non-slip step to your vehicle
- Provides a reliable recovery point
- Black E-Coat finish



MEGA D-RING

PN: 5141-B

- Reversible design offers smooth finish or decorative bolts
- 6061-T6 Billet Aluminum with 7/8" stainless pin
- 18,000 LB capacity
- Durable light texture Finish

MEGA D-RING

PN: 5141-M

- Reversible design offers smooth finish or decorative bolts
- 6061-T6 Billet Aluminum with 7/8" stainless pin
- 18,000 LB capacity
- Durable light texture Finish





3"X30' TOW STRAP

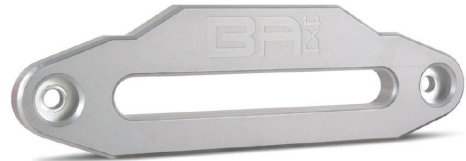
PN: 5139

- 30,000 LB Capacity
- 30' x 3" Tow Strap
- 100% Polyester
- Protective Sleeve Included
- Sewn In Strap Preventing Unraveling

HAWSE FAIRLEAD

PN: 5140

- For winches 6-12,000 LBS
- Fits synthetic rope only
- Durable anodized matte silver finish
- Mounting hardware included
- 10" on center bolt pattern



2IN-3IN ROLL BAR GRAB HANDLE

PN: 5142

- Nylon webbing and industrial grade hook and loop
- Built for 2" - 3" roll bars
- Anti-slip handle grips
- Sold in pairs

C.O.R.E LED ROADFLARE

PN: 5168

- 10 functions LED emergency roadside flare
- Waterproof and crush resistant
- Magnetic back and a hook for multiple mounting options
- Visible up to 1 mile
- Powered by AAA batteries (included)





CUBE LED LIGHT SPOT

PN: 30040 **NEW**

- Spot beam
- Durable die cast aluminum housing
- Combined 40 watts and 5000 raw lumens
- IP67 waterproof rating
- Includes a pair of lights and a wiring harness with an illuminated switch

CUBE LED LIGHT FLOOD

PN: 30041 **NEW**

- Flood beam
- Durable die cast aluminum housing
- Combined 40 watts and 5000 raw lumens
- IP67 waterproof rating
- Includes a pair of lights and a wiring harness with an illuminated switch



DUAL ROW LED CUBE FLOOD LIGHT

PN: 30037

- Surface mount
- Flood beam
- Sold as a pair with wiring harness and switch





20" LED LIGHT BAR

PN: 40020 **NEW**

- Combo beam
- Durable die cast aluminum housing
- Combined 120 watts and 8400 raw lumens
- IP67 waterproof rating
- Includes a pair of lights and a wiring harness with an illuminated switch

30" LED LIGHT BAR

PN: 40030 **NEW**

- Combo beam
- Durable die cast aluminum housing
- Combined 180 watts and 12,400 raw lumens
- IP67 waterproof rating
- Includes a pair of lights and a wiring harness with an illuminated switch





50" DUAL ROW LED LIGHT

PN: 40050

- 4D optics
- Spot beam
- Sold as a pair with wiring harness and switch

18" SINGLE ROW LED LIGHT

PN: 50018

- Single row
- Combo/spot/fog beam
- Sold with wiring harness and switch
- 6050 raw lumens







Learn more about off-road bumpers on our website.