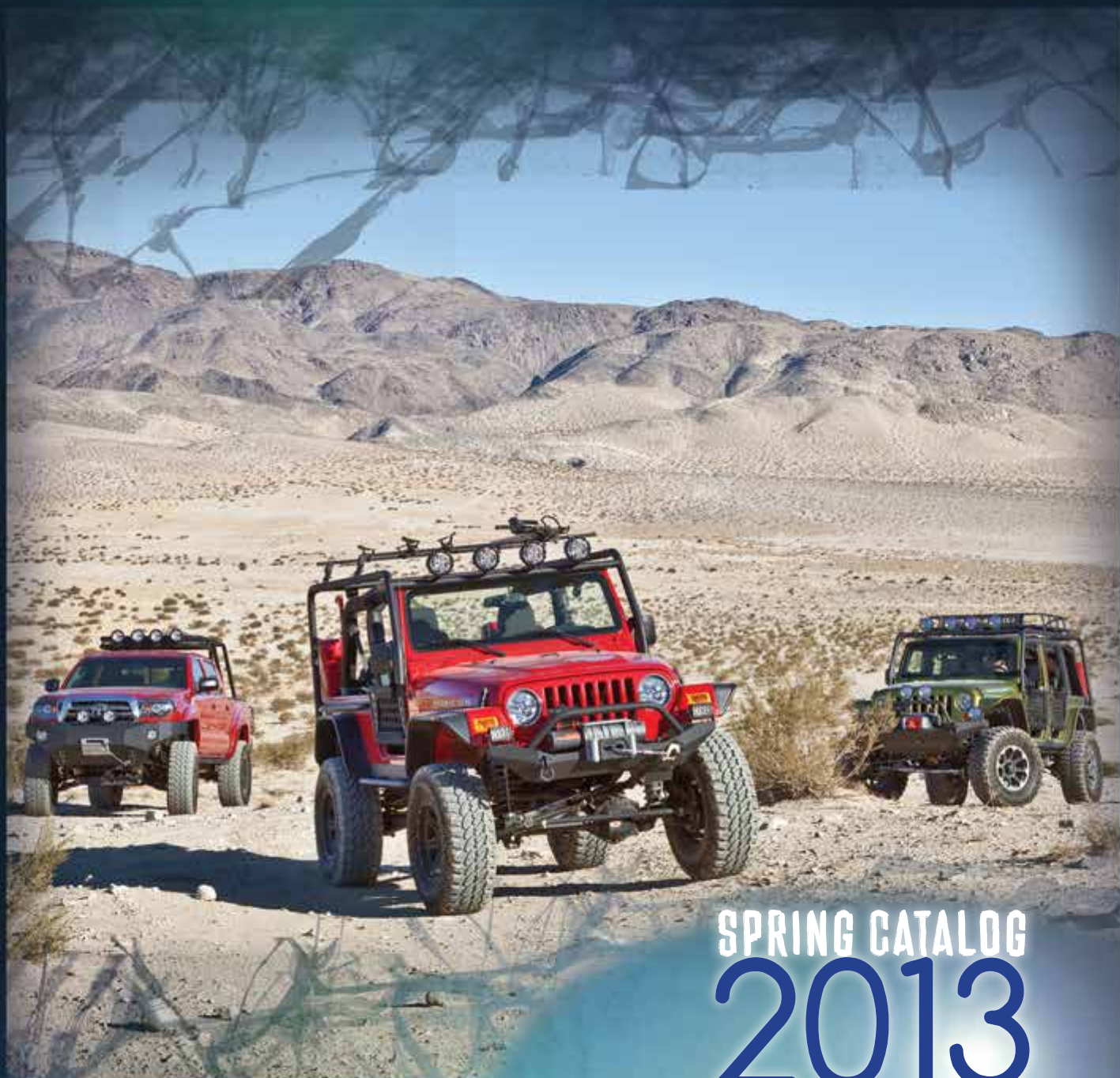


BODY ARMOR 4X4



SPRING CATALOG
2013

JEEP WRANGLER

2007-2013 JEEP WRANGLER JK

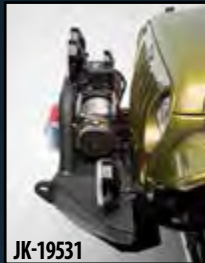


JK FRONT WINCH BUMPER

- 2007-2013 Jeep JK
- 5mm thick Steel Plate Bumper Shell
- Integrated Winch Plate
- High Clearance Design
- 10,000 # Winch Capacity
- Bolt On center grill guard
- Dual recover points
- Dual process textured black powder coat finish
- Does not require relocation of vacuum pump



JK-19531



JK-19531



JK-1951



JK-3105



JK-6124 CARGO RACK 5124 BASKET

JK-5123 SKID PLATE



JK-6124 CARGO RACK 5124 BASKET

TRAIL
DOORS
JK-6135
JK-6136

JK-2394 & 5294

JK REAR BUMPER & SWING ARM

- 2007-2013 Jeep JK
- 5mm Thick Steel plate
- High Clearance Design
- Axle Shaft Pivot
- Double wheel bearings
- Dual recovery points
- Dual process textured black powder coat finish
- JK-2394 (Bumper)
- 5294 (Swing Arm)
- 5127 (Can Carriers)
- 5128 (Jack Baskets)



JK-2961





JK-6135 FRONT TRAIL DOOR

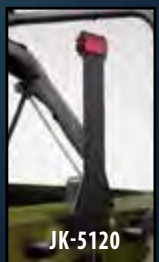


JK-6126 LIGHT BAR

JK-4121 ROCKCRAWLER



5294 SWING ARM



JK-5120



JK-6136 REAR TRAIL DOOR



JK-5123 SKID PLATE



JK-7133



JK-7135

APPLICATION GUIDE

2007-2013 JEEP JK

JEEP JK BUMPERS, RACKS AND DOORS

Part #	Description	Application
JK-1951	Pre-Runner style front bumper	2007 -2013 JK WRANGLER
JK-19531	Front winch bumper, high clearance design	2007 -2013 JK WRANGLER
JK-2394	Rear Bumper high clearance design, accepts swing arm 5294	2007 -2013 JK WRANGLER
JK-2951	Tubular Rear Base Bumper	2007 -2013 JK WRANGLER
JK-2961	Base rear bumper high clearance design	2007 -2013 JK WRANGLER
JK-3103	Flat winch plate, Jeep JK only	2007 -2013 JK WRANGLER
JK-3104	Winch plate frame brackets	2007 -2013 JK WRANGLER
JK-3105	Winch plate kit for OEM JK front bumper	2007 -2013 JK WRANGLER
JK-4121	Rockcrawler Side Bars, JK Unlimited	2007-2013 JK Unlimited
JK-4122	Rockcrawler Side Bars, JK 2 Door	2007-2013 JK 2-DOOR
JK-4123	RockStep side step sliders, JK Unlimited	2007-2013 JK Unlimited
JK-4124	RockStep side step sliders, JK 2 door	2007-2013 JK 2 Door
JK-5120	Elevated CHSML 3rd Brake Light Kit, Jeep JK, TJ & YJ	WRANGLER YJ, TJ & JK
JK-5123	Front skid plate, JK Only	2007 -2013 JK WRANGLER
JK-6124	JK Unlimited Cargo Rack, Base unit. Two box set	2007-2013 JK Unlimited
JK-6125	JK 2 Door Cargo Rack Base unit. Two Box set	2007-2013 JK 2-DOOR
JK-6126	Front light bar for Jeep JK all models	2007-2013 JK WRANGLER
JK-6135	Trail Doors for JK front, set of 2	2007-2013 JK WRANGLER
JK-6136	Trail Doors for JK Unlimited rear, set of 2	2007-2013 JK Unlimited
JK-7133	JK Taillight guard for JK flat design	2007-2013 JK WRANGLER
JK-7135	JK Taillight guard for JK wrap design	2007-2013 JK WRANGLER

ACCESSORIES

5124	Aluminum cargo basket for Body Armor base cargo rack	Body Armor Base Racks
5125	Roof rack adapters for Body Armor roof racks, pair.	Body Armor Base Racks
5126	Mirror set for Body Armor Trail Doors	Body Armor Recon Doors
5127	Gas can adapter kit, standard cans, for Swing Arm 5294	Body Armor swing arm 5294
5128	Hi-Lift Adapter Kit for Swing Arm 5294 (3 pcs)	Body Armor swing arm 5294
5130	Roto-pax can cradles for 5127 arms	Body Armor swing arm 5294
5131	Roto-pax can holder system	Body Armor swing arm 5294
5294	Swing Arm Tire Carrier	Body Armor JK-2394 & TJ-2994 bumper

JEEP WRANGLER

1987-2006 YJ-TJ-TJL



TJ/YJ FRONT WINCH BUMPER

- 1987-2006 Jeep YJ, TJ & TJL
- 5mm thick Steel plate bumper shell
- 6.5mm thick integrated winch plate
- High clearance design
- 10,000 # winch capacity
- Bolt on center grill guard
- Dual recovery points
- Dual process textured black powder coat finish
- Steering box skid plate
- Bolt on installation
- TJ-19531



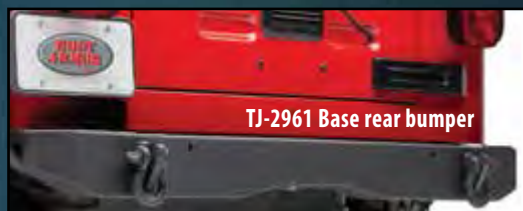
TJ/YJ REAR BUMPER & SWING ARM

- 1987-2006 Jeep YJ, TJ & TJL
- 5mm thick Steel plate
- High clearance design
- Axle shaft pivot
- Double wheel bearings
- Dual recovery points
- Dual process textured black powder coat finish
- TJ-2994 (bumper)
- 5294 (swing arm)
- 5127 (can carriers)
- 5128 (jack brackets)



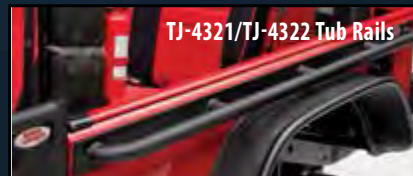
CLASSIC STYLE TJ REAR BUMPER & SWING ARM

- 1996-2006 TJ & TJL
- 2"x5" Rectangular tube
- Steel pin/brass bushing pivot
- Dual recovery points
- Dual process textured black powder coat finish
- Dual gas can carriers
- TJ-2993 (bumper)
- 5292 (swing arm)



APPLICATIONS/ACCESSORIES

JEEP WRANGLER YJ-TJ-TJL



Part #	Description	Application
TJ-1951	Tubular Front Bumper Pre-Runner Style Jeep Wrangler Yj & Tj	1987-1996 YJ & 1997-2006 TJ
TJ-19531	Front Winch Bumper, High Clearance Style For Tj & Yj Jeep Wrangler	1987-1996 YJ & 1997-2006 TJ
TJ-2951	Base Rear Bumper Tubular Style	1997-2006 TJ
TJ-2961	Base Rear Bumper, High Clearance Style	1987-1996 YJ & 1997-2006 TJ
TJ-2993	Rear Bumper, Classic Style, Accepts Swing Arm 5292	1997-2006 TJ
TJ-2994	Rear Bumper, High Clearance for TJ & YJ, Accepts Swing Arm PN 5294	1987-1996 YJ & 1997-2006 TJ
TJ-4121	Jeep TJ - Rockcrawler Side Guards	1997-2006 TJ
TJ-4321	Tub Rails for TJL	2004-2006 TJ Unlimited
TJ-4322	Tub Rails for TJ	1997-2006
TJ-5321	Extreme Rock Rail, TJL New Item	2004-2006 TJ Unlimited
TJ-5322	Extreme Rock Rail Standard Tj New Item	1997-2006 TJ Standard wheel base
TJ-6124	TJ Unlimited Roof Rack Base Unit. Two Box Set	2004-2006 TJ Unlimited
TJ-6125	TJ Short Wheel Base Roof Rack Base Unit. Two Box Set	1997-2006 TJ
TJ-6135	Trail Doors for TJ	1997-2006 TJ Incl Unlimited

TOYOTA TACOMA

2005-2013



SportRack System

TC-19335

FRONT WINCH BUMPER

- TC-19335 2005-2011 Tacoma
- TC-19336 2012-2013 Tacoma
- 5mm thick Steel plate bumper shell
- 6.5mm thick integrated winch plate
- High clearance design
- 10,000 # winch capacity
- Designed for low profile winch
- Dual recovery points
- Dual process textured black powder coat finish
- Dual light pockets
- Bolt on installation

REAR BUMPER & OPTIONAL SWING ARM

- 2005-2013 Toyota Tacoma
- 5mm thick Steel plate
- Dual process textured black powder coat finish
- Contours to vehicle lines
- Dual recovery plates for D-Rings
- Pre drilled for license plate
- TC-2961 (Bumper)
- Swing arm features axle style shaft pivot
- Arm swings open to give full access to bed
- Double wheel bearings
- TC-5293 (swing arm)

SPORT RACK CARGO SYSTEM

- 2005-2013 Toyota Tacoma
- 2" diameter Tube
- Dual process textured black powder coat finish
- Cab basket
- Attaches to the OEM bed mount track system
- TC-6124 (Bed mounting kit, required)
- 5129 (Cab basket, required)



SportRack System



SportRack System

ROCK STEPS

- 2005-2013 Toyota Tacoma Crew Cab
- 5mm thick steel plate
- Double step areas, optional poly step pads available 5123, shown with optional LED light kit
- Bolt on installation
- TC-4121

Part #	Description	Application
TC-19335	Toyota Tacoma Front Winch Bumper	2005-2011 Toyota Tacoma
TC-19336	Toyota Tacoma Front Winch Bumper	2012-2013 Tacoma (5/2013)
TC-2961	Toyota Tacoma Rear Bumper	2005-2013 Toyota Tacoma
TC-4121	Rockstep Side Rails For Crew Cab Tacoma	2005-2013 Toyota Tacoma Crew Cab
TC-5293	Swing Arm Tire Carrier For TC-2961 (Tacoma)	2005-2013 Toyota Tacoma
TC-6124	Mounting Kit For Sport Rack System For Toyota Tacoma (Requires 5129 Basket)	2005-2013 Toyota Tacoma Crew Cab (Requires 5129 Cargo Basket)
TC-7135	Tail Light Guard For Toyota Tacoma	1998-2004 Toyota Tacoma
TC-7136	Tail Light Guard For Toyota Tacoma	2005-2006 Toyota Tundra

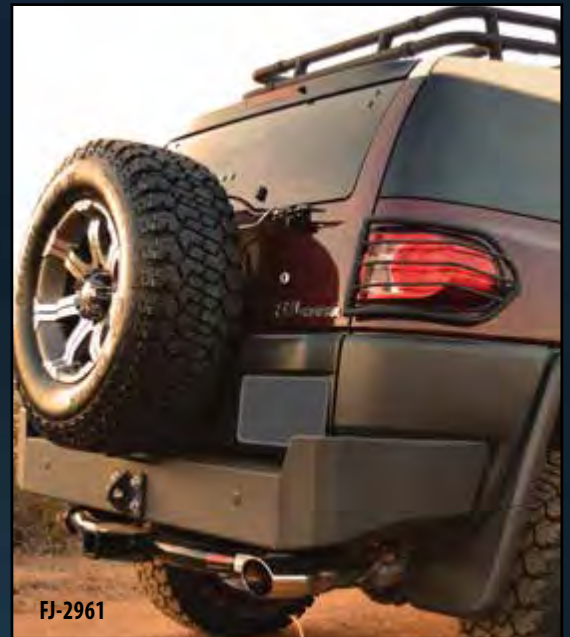
TOYOTA FJ CRUISER



FJ-19336

FRONT WINCH BUMPER

- Toyota 2007-2013 FJ Cruiser
- 5mm thick Steel plate bumper shell
- 6.5mm thick sub-frame winch plate
- High clearance wings
- 10,000 # winch capacity
- 4.5" light pockets
- Dual recovery points
- Dual process textured black powder coat finish
- FJ-19336



FJ-2961

REAR BUMPER

- Toyota 2007-2013 FJ Cruiser
- 5mm thick Steel plate construction
- Large step area to access roof rack
- Can be used with aftermarket hitch
- 3-piece design for ease of installation
- Dual process textured black powder coat finish
- FJ-2961



FJ-7135



FJ-7135

ROCKSTEP

- Toyota 2007-2013 FJ Cruiser
- 5mm thick Steel plate construction
- 6.5mm thick frame mount brackets
- Double step pads
- No drill frame mounted
- Durable for extreme off road use
- Dual process textured black powder coat finish
- FJ-4122



FJ-4122

Part #	Description	Application
FJ-19336	Front Winch Bumper	2007-2013 Toyota FJ
FJ-2961	Rear Bumper	2007-2013 Toyota FJ
FJ-4122	Rocksteps	2007-2013 Toyota FJ
FJ-6123	OEM Style Roof Rack With Light Bar	2007-2013 Toyota FJ
FJ-7135	Tail Light Guards	2007-2013 Toyota FJ
FJ-7231	Front & OEM Bumper Grille Insert Polished SS	2007-2013 Toyota FJ

TOYOTA

TUNDRA



REAR BUMPER

- 2007-2013 Toyota Tundra
- 5mm thick Steel plate
- Dual process textured black powder coat finish
- Contours to vehicle lines
- Dual recovery plates for D-Rings
- Contoured license plate pocket with step area, re-use OEM lights
- TN-2961 (Bumper)
- Swing arm features axle style shaft pivot
- Arm swings open to give full access to bed
- Double wheel bearings
- Retain OEM trailer hitch
- TN-5293 (swing arm)



FRONT WINCH BUMPER

- TN-19335 2007-2013 Tundra
- 5mm thick Steel plate bumper shell
- 6.5mm thick integrated winch plate
- High clearance design
- 10,000 # winch capacity
- Designed for low profile winch
- Dual recovery points
- Dual process textured black powder coat finish
- Dual 4.5" light pockets
- Bolt on installation



ROCKSTEP

- 2007-2013 Toyota Tundra Crew Cab
- 5mm thick steel plate
- Double step areas, optional poly step pads available 5123, optional 5120 LED light kit
- Bolt on installation
- TN-4121

Part #	Description	Application
TN-19335	Toyota Tundra Front Winch Bumper	2007-2013 Toyota Tundra
TN-2961	Toyota Tundra Rear Bumper	2007-2013 Toyota Tundra
TN-4121	Rockstep Side Rails For Toyota Tundra Double Cab	2007-2013 Toyota Tundra Double Cab
TN-5293	Swing Arm Tire Carrier For TN-2961 (Tundra)	2007-2013 Toyota Tundra
TN-6124	Mounting Kit For Sport Rack System For Tundra 6.5' Bed (Requires 5129 Basket)	2007-2012 Toyota Tundra 6.5' Bed (Requires 5129 Cargo Basket)
TN-7135	Tail Light Guard for Toyota Tundra	2000-2003 Toyota Tundra
TN-7136	Tail Light Guard for Toyota Tundra	2004-2006 Toyota Tundra
TN-7137	Tail Light Guard for Toyota Tundra	2007-2013 Toyota Tundra

FORD SUPER DUTY



REAR BUMPER

- 1999-2013 Ford Super Duty
- 5mm thick Steel plate
- Dual process textured black powder coat finish
- Dual recovery plates for D-Rings
- License plate pocket, re-use OEM lights
- Retain OEM Hitch
- FD-2961

FRONT WINCH BUMPER

- FD-19335 2011-2013 Ford Super Duty
- 5mm thick Steel plate bumper shell
- High clearance design
- 16,500 # winch capacity
- 6" outer light pockets, for driving lights
- 4.5" inside light pockets, for fog lights
- Dual recovery points
- Dual process textured black powder coat finish
- High clearance design
- Bolt on installation



ROCKSTEP

- 2002-2013 Ford Super Duty Crew Cab
- 5mm thick steel plate
- Double step areas, optional poly step pads available PN 5123, Optional 5120 LED light kit
- Bolt on installation
- FD-4121



Part #	Description	Application
DG-19335	Front Winch Bumper Dodge 1500 <i>(June 2013 call for updates)</i>	2002-2008 Dodge 1500
DG-19336	Front Winch Bumper Dodge 2500/3500 <i>(June 2013 call for updates)</i>	2002-2009 Dodge 2500/3500
DG-2961	Rear Bumper Dodge 1500/2500/3500 <i>(June 2013 call for updates)</i>	2002-2009 Dodge 1500 2002-2009 Dodge 2500/3500
DG-4121	RockStep Dodge Crew Cab <i>(June 2013 call for updates)</i>	2002-2009 Dodge Crew Cab
FD-19335	Front Winch Bumper Ford Super Duty	2010-2013 FORD SUPER DUTY F-250/F-350
FD-2961	Rear Bumper Ford Super Duty	1999-2013 Ford Super Duty F-250/F-350
FD-4121	RockStep slider step Ford Super Duty Crew Cab	2004-2013 Ford Super Duty Crew Cab

ROOF RACKS



JK-6124



TJ-6125/5124



TN-6124 & 5129



TC-6124 & 5129



TJ-6124 / 5124

JEEP CARGO RACKS

- Front arms attach to "A" pillar, rear mounts to frame rails (optional body mount on JK kits)
- Front light bar with 4 light tabs, rear bar has 2 tabs
- Dual process textured black powder coat finish
- Can hide wiring harness inside tubing
- Accepts 5124 aluminum cargo basket or 5125 rack adapters for Yakima accessories

SPORTRACKS FOR TRUCKS

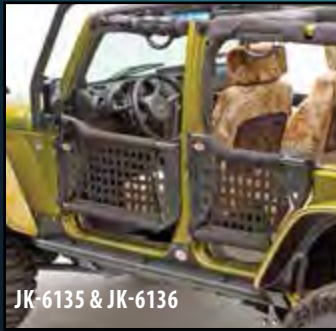
- 2" diameter tube construction
- Bolt on installation
- Cab basket for extra cargo space
- Dual process textured black powder coat finish
- Requires bed mount kit and cab basket
- Light tabs included
- Bolt on installation



FJ-6123

Part #	Description	Application
5124	Cargo Basket for Body Armor Base Jeep Cargo Racks	Body Armor Jeep Base Racks
5125	Roof Rack Adapters for Body Armor Roof Racks, <i>Sold As A Pair</i>	Body Armor Jeep Base Racks
5129	Cab Basket for Sport Rack, Mid Sized Truck	Mid Sized Trucks, <i>requires bed mount kit</i>
FJ-6123	Toyota FJ OE Style Roof Rack, <i>No drill installation</i>	2007-2012 Toyota FJ
JK-6124	Jeep JK Unlimited Cargo Rack, Base Unit. <i>Two box set</i>	2007 -2013 JK Unlimited
JK-6125	Jeep JK 2 Door Cargo Rack Base Unit. <i>Two Box set</i>	2007-2013 JK 2-Door
JK-6126	Front Light bar for Jeep JK	2007-2013 JK
TC-6124	Mounting Kit for Sport Rack System for Toyota Tacoma <i>(requires 5129 basket)</i>	2005-2013 Toyota Tacoma Crew Cab
TJ-6124	TJ Unlimited Cargo Rack Base Unit. <i>Two Box Set</i>	2004-2006 TJ Unlimited
TJ-6125	TJ Short Wheel Base Cargo Rack Base Unit. <i>Two Box Set</i>	97-06 TJ
TN-6124	Mounting kit for Sport Rack system for Tundra 6.5' Bed <i>(requires 5129 basket)</i>	2007-2012 Toyota Tundra 6.5' bed

TRAIL DOORS



JK-6135 & JK-6136



5126 Mirror set

JEEP TRAIL DOORS

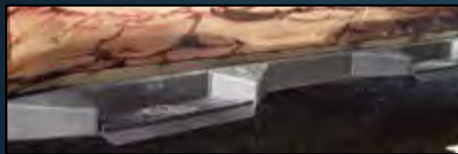
- 3/4" steel tube construction
- Exclusive internal latch
- Includes nylon webbing and arm pads
- Textured black powder coat finish
- Limiting straps included
- TJ has dome light shut off bar
- Pre-drilled for Body Armor mirrors



TJ-6136

Part #	Description	Application
5126	Mirrors for Trail Doors <i>Sold As Set</i>	Body Armor Trail Doors
JK-6135	Trail Doors for JK Front (<i>fits either 2 door or unlimited</i>) Set of 2	2007-2013 JK ALL
JK-6136	Trail Doors for JK Unlimited Rear Set of 2	2007-2013 JK Unlimited
TJ-6135	Trail Doors for TJ	97-06 TJ All

ROCKSTEPS, ROCKCRAWLER SLIDERS



ROCK STEPS

- 5mm thick steel plate
- Tough enough for the trail
- Double step areas, optional poly step pads available PN 5123
- Optional 5120 LED light kit
- Available for Toyota, Ford, Dodge, Jeep JK

ROCKCRAWLER SLIDERS

- 2x3" rectangular tube
- 3/4" kick out trail
- Bolt on installation
- Full length coverage
- Dual process powder coat



Part #	Description	Application
DG-4121	RockStep Dodge Crew Cab (<i>Available 6/20/13</i>)	2002-2009 1500/2500
FD-4121	RockStep Ford Super Duty Crew Cab	2004-2013 Ford Super Duty Crew Cab
FJ-4122	RockStep FJ Cruiser	2007-2012 Toyota FJ
JK-4121	Rockcrawler Side Bars Jeep JK Unlimited	2007-2013 JK Unlimited
JK-4122	Rockcrawler Side Bars Jeep JK 2 Door	2007-2013 JK 2-DOOR
JK-4123	RockStep, JK Unlimited (<i>Available 5/1/2013</i>)	2007-2013 Jeep JK Unlimited
JK-4124	RockStep JK 2 door (<i>Available 6/2013</i>)	2007-2013 Jeep JK 2 door
TC-4121	RockStep Toyota Tacoma Crew Cab	2005-2013 Toyota Tacoma Crew Cab
TJ-4121	Rockcrawler Side Guards Jeep TJ	1997-2006 TJ
TJ-4321	Tub Rails for TJL	2004-2006 TJ Unlimited
TJ-4322	Tub Rails for TJ	1997-2006 TJ, YJ & CJ-7
TJ-5321	Extreme Rock Rail, TJL	2004-2006 TJ Unlimited
TJ-5322	Extreme Rock Rail Standard TJ	1997-2006 TJ
TN-4121	RockStep Toyota Tundra Double Cab	2007-2013 Toyota Tundra Double Cab
WU-4121	Rockcrawler Side Guards TJ Unlimited	2004-2006 TJ Unlimited

ACCESSORIES



3200



3202



5126



3210



5125



5127 Gas Can System
(shown installed on 5294 swing arm)



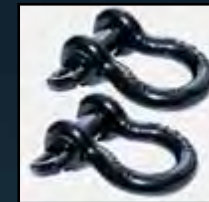
5123 RockStep pads



JK-5120



5128



3202



Part #	Description	Application
3200	Vertical Tow Bar Adaptor Brackets (Pr)	Body Armor Front Bumper
3202	Black Powder Coated D-Rings (Pr.)	Universal For 3/4" Mount
3207	Clevis D-Ring, Single Black Powder Coat	Universal For 3/4" Mount
3210	Horizontal Tow Bar Adaptor Brackets (Pr)	Horizontal Tow Adapter
5120-LED	Dual Function Led Light Kit For Rocksteps	Body Armor Rocksteps
5125	Roof Rack Adapters For Body Armor Roof Racks, <i>Sold As A Pair</i>	Body Armor Base Racks
5126	Mirrors For Recon Doors Sold As Set	Body Armor Recon Doors
5127	Gas Can Adapter Kit, 2 Cans, for Swing Arm 5293 & 5294	Body Armor Swing Arm 5294
5128	Hi-Lift jack adapter kit for swing arm 5294 (3 Pcs)	Body Armor Swing Arm 5294
JK-3103	JK Flat Winch Plate	2007 -2013 JK Wrangler
JK-3104	JK Winch Plate Bracket (Pair)	2007 -2013 JK Wrangler
JK-3105	Winch Plate Kits For OEM JK Front Bumper	2007 -2013 JK Wrangler
JK-5120	Elevated LED CHSML 3rd brake light kit	Wrangler Yj, Tj & JK
JK-5123	JK Front Skid Plate	2007-2013 JK WRANGLER

TAIL LIGHT GUARDS



JK-7133



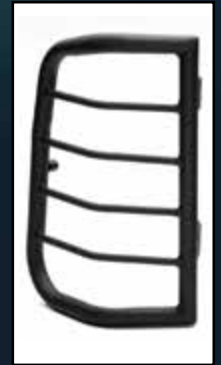
JK-7135



FJ-7135



TC-7136



TC-7135



TN-7135



TN-7136



TN-7137

- Frame is manufactured from steel tube
- Lens cross bars are manufactured from solid wire bars
- Bolt on installation in most applications
- Dual process black textured powder coat finish

Part #	Description	Application
FJ-7135	Toyota FJ Tail Light Guard Black Finish	2007-2012 Toyota FJ
JK-7133	JK Tail Light Guard for JK Black Finish Flat Design	2007 -2013 JK WRANGLER
JK-7135	JK Tail Light Guard for JK Black Finish Wrap Design	2007 -2013 JK WRANGLER
TC-7135	Tail Light Guard for Toyota Tacoma	1998-2004 Toyota Tacoma
TC-7136	Tail Light Guard for Toyota Tacoma	2005-2013 Toyota Tacoma
TN-7135	Tail Light Guard for Toyota Tundra	2000-2003 Toyota Tundra
TN-7136	Tail Light Guard for Toyota Tundra	2004-2006 Toyota Tundra
TN-7137	Tail Light Guard for Toyota Tundra	2007-2011 Toyota Tundra

DUCTILE CAST DIFF COVERS

- Ductile cast Iron
- Black powder coat
- Bolt on installation
- 7/16" thick casting
- Engineered to survive the trail

MODEL 20

PN-82000

DANA 30

PN-8300

DANA 35

PN-83500

DANA 44

PN-84400

DANA 60

PN-86000



Part #	Description	Application
3200	Vertical Tow bar Adaptor Brackets (Pr.)	Body Armor Front Jeep Bumpers
3202	Black Powder Coated D-rings (Pr.)	Universal for 3/4" mount
3207	Clevis D-Ring, Single Black powder coat	Universal for 3/4" mount
3210	Horizontal Tow bar Adaptor Brackets (Pr.)	Horizontal Tow Adapter
5120-LED	Dual function LED Light Kit for RockSteps	Body Armor RockSteps
5124	Cargo Basket for Body Armor Base Cargo Rack	Body Armor Base Racks
5125	Roof Rack Adapters for Body Armor Roof Racks, sold as a pair.	Body Armor Base Racks
5126	Mirrors for Recon doors sold as set	Body Armor Recon Doors
5127	Gas Can Adapter Kit for Swing Arm 5293 & 5294	Body Armor Swing Arm 5294
5128	Hi-Lift Adapter Kit for Swing Arm 5293 & 5294 (3 pcs)	Body Armor Swing Arm 5294
5129	Cab Basket for Sport Rack	<i>requires mounting kit</i>
5130	Roto-pax can cradles for 5127 arms	Body Armor swing arm 5294
5131	Roto-pax can holder system	Body Armor swing arm 5294
5292	Tire/Can Swing Arm Carrier for TJ2993	TJ-2993
5294	Swing Arm for Rear Bumpers, JK-2394 & TJ-2994	Body Armor JK-2394 & TJ-2994 Bumper
82000	Body Armor Diff Cover Model 20 axle	Model 20
83000	Body Armor Cast Diff Cover Dana 30	Dana 30
83500	Body Armor Cast Diff Cover Dana 35	Dana 35
84400	Body Armor Cast Diff Cover Dana 44	Dana 44
86000	Body Armor Cast Diff Dana 60	Dana 60
DG-19335	Front Winch Bumper Dodge 1500	2002-2008 Dodge 1500
DG-19336	One Piece Front Winch Bumper Dodge 2500/3500	2003-2009 Dodge 2500/3500
DG-2961	One Piece rear Bumper 1500/2500/3500	Dodge 1500: 2002-2009 2500/3500 2003-2010
DG-4121	RockStep Dodge Crew Cab	Dodge 1500/2500/3500 2002-2009 Crew Cab
FD-19335	Front Winch Bumper, Ford Super Duty	2010-2013 FORD SUPER DUTY
FD-2961	Ford Super Duty Rear Bumper	1999-2013 F250/350
FD-4121	Ford Super Duty RockStep	1999-2013 Ford Super Duty Crew Cab
FJ-19336	Front Winch Bumper, Toyota FJ Cruiser	2007-2013 Toyota FJ
FJ-2961	Rear Bumper FJ Cruiser	2007-2013 Toyota FJ
FJ-4122	RockStep Sliders	2007-2013 Toyota FJ
FJ-6123	OEM Style Roof Rack, FJ Cruiser	2007-2013 Toyota FJ
FJ-7135	Tail Light Guard, Toyota FJ Cruiser	2007-2013 Toyota FJ
FJ-7231	Front & OE Bumper Grille insert Polished SS, Toyota FJ Cruiser	2007-2013 Toyota FJ
JK-1951	Tubular Front Bumper with Grill Guard, Jeep JK	2007 -2013 JK WRANGLER
JK-19531	Front Bumper High Clearance Design, Jeep JK	2007 -2013 JK WRANGLER
JK-2394	Rear Bumper High Clearance Design, Jeep JK, accepts Swing Arm 5294	2007 -2013 JK WRANGLER
JK-2951	Tubular Rear Base Bumper, Jeep JK	2007 -2013 JK WRANGLER
JK-2961	Rear Base Bumper High Clearance Design, Jeep JK	2007 -2013 JK WRANGLER
JK-3103	JK Flat Winch plate	2007 -2013 JK WRANGLER
JK-3104	Winch plate brackets, Jeep JK	2007 -2013 JK WRANGLER
JK-3105	Winch Plate Kit for OEM JK Front Bumper	2007 -2013 JK WRANGLER
JK-4121	Jeep JK Unlimited Rockcrawler Side Bars	2007-2013 JK Unlimited
JK-4122	Rockcrawler Side Bars, Jeep JK 2 Door	2007-2013 JK 2-DOOR
JK-4123	RockSteps JK Unlimited	2007-2013 JK Unlimited

Part #	Description	Application
JK-4124	RockSteps JK 2 Door	2007-2013 JK 2-DOOR
JK-5120	JK 3rd Brake Light Kit	WRANGLER YJ, TJ & JK
JK-5123	Front Skid Plate, Jeep JK	2007-2013 JK WRANGLER
JK-6124	Cargo Rack, Base Unit. JK Unlimited, Two box set	2007 -2013 JK Unlimited
JK-6125	Cargo Rack, Base Unit. JK 2 door, Two box set	2007-2013 JK 2-DOOR
JK-6126	Front Light Bar, Jeep JK	2007-2013 JK
JK-6135	Trail Doors for JK Front	2007-2013 JK
JK-6136	Trail Doors for JK Unlimited Rear	2007-2013 JK Unlimited
JK-7133	Tail Light Guard, JK Flat Design	2007-2013 JK
JK-7135	Tail Light Guard, JK Wrap Design	2007-2013 JK
TC-19335	Front Winch Bumper, Toyota Tacoma	2005-2011 Toyota Tacoma
TC-19336	Front winch Bumper, Toyota Tacoma	2012-2013 Toyota Tacoma
TC-2961	Rear Bumper, Toyota Tacoma	2005-2013 Toyota Tacoma
TC-4121	RockStep Side Rails for Crew Cab Tacoma	2005-2013 Toyota Tacoma Crew Cab
TC-5293	Swing Arm Tire Carrier for TC-2961 (Tacoma)	2005-2013 Toyota Tacoma
TC-6124	Mounting Kit for Sport Rack System for Toyota Tacoma <i>(requires 5129 basket)</i>	2005-2013 Toyota Tacoma Crew Cab
TC-7135	Tail Light Guard for Toyota Tacoma	1998-2004 Toyota Tacoma
TC-7136	Tail Light Guard for Toyota Tacoma	2005-2013 Toyota Tacoma
TJ-1951	Tubular Front Bumper with Pre-runner style grill Guard, Jeep YJ & TJ	1987-1996 YJ & 1997-2006 TJ
TJ-19531	Front Winch Bumper, High Clearance Design, TJ & YJ Jeep Wrangler	1987-1996 YJ & 1997-2006 TJ
TJ-2951	Rear Base Bumper Tubular Style	1997-2006 TJ
TJ-2961	Base Rear Bumper, Formed style	1987-1996 YJ & 1997-2006 TJ
TJ-2993	Classic style Rear Bumper W/Swing Arm Post	1997-2006 TJ
TJ-2994	Formed Rear Bumper, TJ & YJ, accepts Swing Arm PN 5294	1987-1996 YJ & 1997-2006 TJ
TJ-4121	Rockcrawler Side Guards, Jeep TJ	1997-2006 TJ
TJ-4321	Tub Rails, TJ Unlimited	2004-2006 TJ Unlimited
TJ-4322	Tub Rails, TJ, YJ, CJ-7	1997-2006
TJ-5321	Extreme Rock Rail, TJ Unlimited	2004-2006 TJ Unlimited
TJ-5322	Extreme Rock Rail Standard TJ	1997-2006 TJ Standard Wheel Base
TJ-6124	Cargo Rack Base Unit, TJ Unlimited, Two Box Set	2004-2006 TJ Unlimited
TJ-6125	Cargo Rack Base Unit, TJ Short Wheel Base, Two Box Set	1997-2006 TJ
TJ-6135	Trail Doors, TJ, YJ <i>(YJ requires changing to TJ type striker)</i>	1997-2006 TJ Incl Unlimited
TN-19335	Front Winch Bumper, Toyota Tundra	2007-2013 Toyota Tundra
TN-2961	Rear Bumper, Toyota Tundra	2007-2013 Toyota Tundra
TN-4121	RockStep Side Rails, Toyota Tundra Double Cab Only	2007-2013 Toyota Tundra Double Cab
TN-5293	Swing Arm Tire Carrier for TN-2961 (Tundra)	2007-2013 Toyota Tundra
TN-6124	Mounting kit for Sport Rack system for Tundra 6.5' Bed <i>(requires 5129 basket)</i>	2007-2013 Toyota Tundra 6.5' bed <i>(requires 5129 cargo basket)</i>
TN-7135	Tail Light Guard for Toyota Tundra	2000-2003 Toyota Tundra
TN-7136	Tail Light Guard for Toyota Tundra	2004-2007 Toyota Tundra
TN-7137	Tail Light Guard for Toyota Tundra	2007-2011 Toyota Tundra
WU-4121	Rockcrawler Side Guards, Jeep TJ Unlimited	04-06 TJ Unlmited

BODY ARMOR 4X4



BODY ARMOR 4X4