



MOTOR CYCLE C A T A L O G



MCH SERIES STAND-ALONE GPS COMPASS



The new Dakota Digital MCH-GPS17 unit offers: Compass, Altimeter and Ambient Air Temperature information while integrating with your stock '96-2013 Harley Davidson Touring model gauges!

The MCH-GPS17 instrument has an internal, GPS-based Compass and Altimeter sensor for easy installation (no external antenna required) and offers the following features:

- 8 position Compass heading: N, NE, E, SE,S, SW, W, NW.
- Ambient Air Temperature - uses the factory Ambient Air Temperature sender
- Altimeter
- GPS time - Automatically updates the Clock to the correct minute
- 8 User-Selectable LCD Display Colors: Stock, Red, Green, Blue, Teal, Magenta, Yellow, White
- Choice of Bezel Option: Chrome or Black bezels

MCH-GPS17-K-K

LCD Stand-alone GPS compass black/black

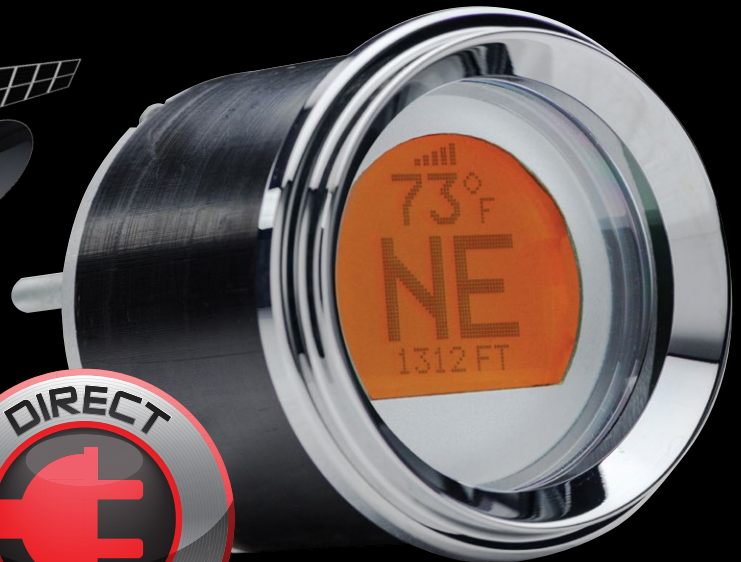
MCH-GPS17-S-C

LCD Stand-alone GPS compass silver/chrome



Why a Dakota Digital GPS Compass?

1. Simple connectivity; plug in to stock harness and you're ready to ride!
2. No need to worry about sender placement or interference from stereo components.
3. The Dakota Digital GPS compass is self-contained; no external antenna needed!



MCL SERIES 2014 & UP BAGGERS



The all new Dakota Digital instrumentation for the 2014 and newer Harley-Davidson Street Glide, Ultra Limited, Tri Glide, and 2015 and newer Road Glide is here! Dakota Digital continues to be the leader and forerunner in the innovation of aftermarket Direct-Fit, Plug-and-Play instrumentation for Harley Davidson bikes. Not only does the MCL-3014 display every option that is available on your current gauge package, but also adds vibrant blue or red digital readouts with improved functionality and visibility over the OEM! MCL-3014 utilizes the stock chrome trim rings from the OEM gauges.

- Speedometer
 - Tachometer with bar graph Tach that wraps around the crown of the Tachometer.
 - Oil Temperature (sender included)
 - Volts
 - Fuel Level wraps around the crown of the Speedometer
 - Gear Position
 - Clock
 - Odometer
- A & B Trip meters
 - Service Meter (miles until next service)
 - Performance Meters
 - 1/4 mile Speed and Time
 - 0-60 time
 - High Speed and RPM recall
 - Indicators:
 - Turn Signals, High Beam, Cruise Control, Check Engine, Security, ABS and Reverse and Parking Brake (available on Tri-Glide).



TOURING GAUGES

MCL-3014 Blue display, fits 2014 and newer models
 MCL-3014-R Red display, fits 2014 and newer models



MCL-3014 SERIES
 2015 SEMA
 POWERSPORTS
 PRODUCT OF THE YEAR

MCL-3K14 ADD-ON PRESSURE GAUGES



MCL-3K14-A Air Pressure Gauge (requires MBM-19)

- Available in blue or red lighting.
- MBM-19 Includes one sender.

For two-pressure systems such as front and rear air suspension, one pressure reading will display in clock window of the tachometer. This installation requires an additional sender SEN-1901 to be installed with the MBM-19.

MCL-3K14-A	Add-on Air Pressure gauge, blue
MCL-3K14-A-R	Add-on Air Pressure gauge, red
MBM-19	Add-on Air Suspension PSI module w/1 sender
SEN-1901	Front Air Suspension PSI sender for MBM-19

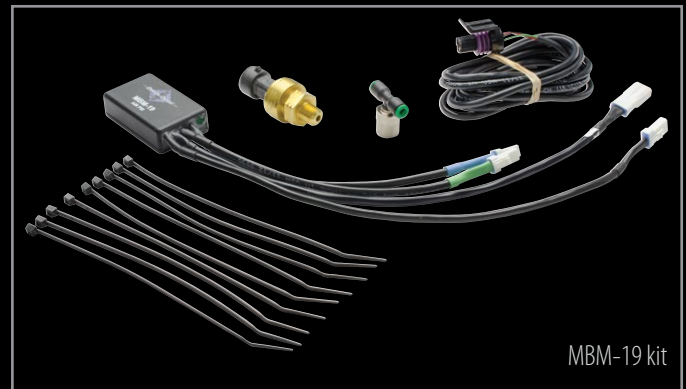
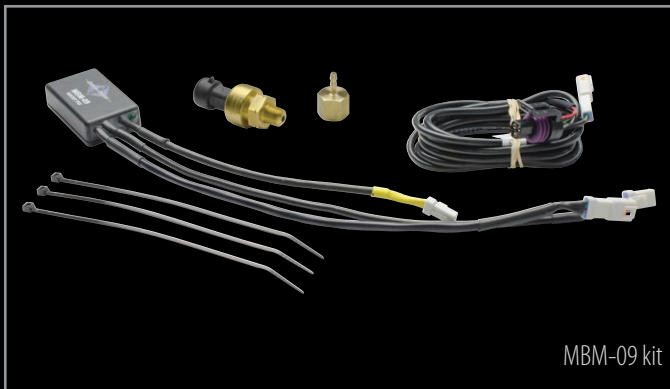
MCL-3K14-B Boost Pressure Gauge (requires MBM-09)

- Available in blue or red lighting.
- MBM-09 Includes one sender.

MCL-3K14-B	Add-on Boost Pressure gauge, blue
MCL-3K14-B-R	Add-on Boost Pressure gauge, red
MBM-09	Add-on Boost module with one sender

- MCL-3K14 gauges will not work on police models.
- MCL-3K14-A and MCL-3K14-B are not standalone models, requiring an MCL-3014 for operation.

MBM ADD-ON MODULES



MBM MODULES

MBM-09	Add-on Boost module with sender
MBM-17	Add-on GPS Compass module
SEN-1701	Optional Air Temp sender for MBM-17
MBM-19	Add-on Air Suspension PSI module w/1 sender
SEN-1901	Front Air Suspension PSI sender for MBM-19

MBM modules plug directly into the MVX and MCL-3014 gauges and add readings for up to two Air Suspension Pressures, Boost Pressure, or Compass Heading into the existing LCD displays of the Speedometer and Tachometer. This makes it extremely easy to add these gauge readings without having to remove any of your existing MVX or MCL gauges. Should you decide that you want to have a dedicated gauge display for Air Suspension Pressure or Boost Pressure, they are available too!

MVX SERIES

1996 - 2013 BAGGERS



MVX-8604-KR-C



MVX-8604-WG-K

Finally a set of analog gauges for your motorcycle that you can get excited about! Dakota Digital is proud to introduce the MVX Series Analog/Digital Bagger Gauges! With two bezel options, four background choices, and thirty-one lighting colors to choose from, the combinations are nearly endless. Personalize your gauge set by programming the pointer, backlight, and LCD message center colors independently. Whether installing a six-gauge set, or building your perfect 2-7 gauge set from our a la carte offerings, you will get all seven gauge readings displayed in the Speedometer and Tachometer LCD readouts (Speed, RPM, Volts, Fuel, Oil Pressure, Oil Temp, and Air Temp), as well as miles to empty, and performance readouts (0-60 time, and 1/4 mile speed and time).

- Thirty-one user-selectable lighting colors available for background, message, and pointer .
- Four background options to choose from: black/red, black/gray, white/red, and white/gray.
- Chrome or black bezels available.
- Proudly designed and manufactured in the USA!



MVX-8604-KG-K or MVX-8204-KG-K

NOW WITH
31
COLORS



SIX-GAUGE KIT FOR 1996-2003 BAGGERS

MVX-8600-KG-C	Black/gray face with chrome bezel
MVX-8600-KG-K	Black/gray face with black bezel
MVX-8600-KR-C	Black/red face with chrome bezel
MVX-8600-KR-K	Black/red face with black bezel
MVX-8600-WG-C	White/gray face with chrome bezel
MVX-8600-WG-K	White/gray face with black bezel
MVX-8600-WR-C	White/red face with chrome bezel
MVX-8600-WR-K	White/red face with black bezel

SIX-GAUGE KIT FOR 2004-2013 BAGGERS

MVX-8604-KG-C	Black/gray face with chrome bezel
MVX-8604-KG-K	Black/gray face with black bezel
MVX-8604-KR-C	Black/red face with chrome bezel
MVX-8604-KR-K	Black/red face with black bezel
MVX-8604-WG-C	White/gray face with chrome bezel
MVX-8604-WG-K	White/gray face with black bezel
MVX-8604-WR-C	White/red face with chrome bezel
MVX-8604-WR-K	White/red face with black bezel

TWO-GAUGE KIT FOR 1996-2003 BAGGERS

MVX-8200-KG-C	Black/gray face with chrome bezel
MVX-8200-KG-K	Black/gray face with black bezel
MVX-8200-KR-C	Black/red face with chrome bezel
MVX-8200-KR-K	Black/red face with black bezel
MVX-8200-WG-C	White/gray face with chrome bezel
MVX-8200-WG-K	White/gray face with black bezel
MVX-8200-WR-C	White/red face with chrome bezel
MVX-8200-WR-K	White/red face with black bezel

TWO-GAUGE KIT FOR 2004-2013 BAGGERS

MVX-8204-KG-C	Black/gray face with chrome bezel
MVX-8204-KG-K	Black/gray face with black bezel
MVX-8204-KR-C	Black/red face with chrome bezel
MVX-8204-KR-K	Black/red face with black bezel
MVX-8204-WG-C	White/gray face with chrome bezel
MVX-8204-WG-K	White/gray face with black bezel
MVX-8204-WR-C	White/red face with chrome bezel
MVX-8204-WR-K	White/red face with black bezel

SINGLE GAUGES FOR 1996-2013 BAGGERS

Air pressure guage requires MBM-19, sold seperately on page 4.

MVX-8K-A-KG-C	Air pressure, black/gray face, chrome bezel
MVX-8K-A-KG-K	Air pressure, black/gray face, black bezel
MVX-8K-A-KR-C	Air pressure, black/red face, chrome bezel
MVX-8K-A-KR-K	Air pressure, black/red face, black bezel
MVX-8K-A-WG-C	Air pressure, white/gray face, chrome bezel
MVX-8K-A-WG-K	Air pressure, white/gray face, black bezel
MVX-8K-A-WR-C	Air pressure, white/red face, chrome bezel
MVX-8K-A-WR-K	Air pressure, white/red face, black bezel

Boost gauge requires MBM-09, sold seperately on page 4.

MVX-8K-B-KG-C	Boost, black/gray face, chrome bezel
MVX-8K-B-KG-K	Boost, black/gray face, black bezel
MVX-8K-B-KR-C	Boost, black/red face, chrome bezel
MVX-8K-B-KR-K	Boost, black/red face, black bezel
MVX-8K-B-WG-C	Boost, white/gray face, chrome bezel
MVX-8K-B-WG-K	Boost, white/gray face, black bezel
MVX-8K-B-WR-C	Boost, white/red face, chrome bezel
MVX-8K-B-WR-K	Boost, white/red face, black bezel

MVX-8K-F-KG-C	Fuel, black/gray face, chrome bezel
MVX-8K-F-KG-K	Fuel, black/gray face, black bezel
MVX-8K-F-KR-C	Fuel, black/red face, chrome bezel
MVX-8K-F-KR-K	Fuel, black/red face, black bezel
MVX-8K-F-WG-C	Fuel, white/gray face, chrome bezel
MVX-8K-F-WG-K	Fuel, white/gray face, black bezel
MVX-8K-F-WR-C	Fuel, white/red face, chrome bezel
MVX-8K-F-WR-K	Fuel, white/red face, black bezel

MVX-8K-O-KG-C	Oil pressure, black/gray face, chrome bezel
MVX-8K-O-KG-K	Oil pressure, black/gray face, black bezel
MVX-8K-O-KR-C	Oil pressure, black/red face, chrome bezel
MVX-8K-O-KR-K	Oil pressure, black/red face, black bezel
MVX-8K-O-WG-C	Oil pressure, white/gray face, chrome bezel
MVX-8K-O-WG-K	Oil pressure, white/gray face, black bezel
MVX-8K-O-WR-C	Oil pressure, white/red face, chrome bezel
MVX-8K-O-WR-K	Oil pressure, white/red face, black bezel
MVX-8K-T-KG-C	Oil temperature, black/gray face, chrome bezel
MVX-8K-T-KG-K	Oil temperature, black/gray face, black bezel
MVX-8K-T-KR-C	Oil temperature, black/red face, chrome bezel
MVX-8K-T-KR-K	Oil temperature, black/red face, black bezel
MVX-8K-T-WG-C	Oil temperature, white/gray face, chrome bezel
MVX-8K-T-WG-K	Oil temperature, white/gray face, black bezel
MVX-8K-T-WR-C	Oil temperature, white/red face, chrome bezel
MVX-8K-T-WR-K	Oil temperature, white/red face, black bezel
MVX-8K-V-KG-C	Voltmeter, black/gray face, chrome bezel
MVX-8K-V-KG-K	Voltmeter, black/gray face, black bezel
MVX-8K-V-KR-C	Voltmeter, black/red face, chrome bezel
MVX-8K-V-KR-K	Voltmeter, black/red face, black bezel
MVX-8K-V-WG-C	Voltmeter, white/gray face, chrome bezel
MVX-8K-V-WG-K	Voltmeter, white/gray face, black bezel
MVX-8K-V-WR-C	Voltmeter, white/red face, chrome bezel
MVX-8K-V-WR-K	Voltmeter, white/red face, black bezel

MCL-3000 SERIES

1996 - 2013 BAGGERS



Complete six-gauge set plugs directly into your stock wiring. Applications available for all 1996-2013 fairing models including Road Glide. Set includes Speedometer with Odometer and Dual Trip Odometers, Tachometer, Oil Pressure, Oil Temperature, Voltage, and Fuel Level gauges. Additional features include service meter, clock, gear position, 0-60 time, 1/4 mile time, 1/4 mile speed, high speed, and RPM recall. Includes cruise on and cruise engaged indicators as well as security, check engine, and ABS light. Extremely bright LED displays are highly visible in sunlight! User selectable for metric applications as well as one-time user settable Odometer.

- Plugs directly into stock wiring harness.
- Uses your bike's stock sensors, includes Oil Temperature sensor.
- Triple chrome plated, CNC machined bezels. Optional black bezel kit BZL-3000-K available on page 8.
- Vibrant blue or red LED displays.

MCL-3000 SERIES 1996 - 2013 BAGGERS



SIX-GAUGE PACKAGES

MCL-3000-OT	Direct plug-in six-gauge set for '96-'03 Harley-Davidson baggers, chrome bezels, blue display
MCL-3000-R	Direct plug-in six-gauge set for '96-'03 Harley Davidson baggers, chrome bezels, red display
SEN-1011	Cable drive adapter (required for '96-'99 models)
MCL-3006-OT	Direct plug-in six-gauge set for '04-'13 Harley-Davidson baggers, chrome bezels, blue display
MCL-3006-R	Direct plug-in six-gauge set for '04-'13 Harley-Davidson baggers, chrome bezels, red display

MATTE BLACK BEZEL KITS

BZL-3000-K	Six-gauge black bezel kit, fits MCL-3000 models (Six piece kit)
BZL-3K-LRG-K	Large, single-gauge, Speedometer or Tachometer black bezel
BZL-3K-SML-K	Small, single gauge black bezel

AUXILIARY SPECIALTY INSTRUMENTS

One auxiliary gauge may be added to the MCL-3000 & MCL-3006 gauge packages or build any combination from the a la carte and specialty gauge list for up to 7 total gauges.

MCL-3K-A	Air PSI, 0-150 or 0-400 PSI, select applicable sensor below, chrome bezel, blue display
MCL-3K-A-R	Air PSI, 0-150 or 0-400 PSI, select applicable sensor below, chrome bezel, red display
SEN-1031	Air PSI sensor, 0-150 PSI, 1/8" NPT
SEN-1035	Air PSI sensor, 0-400 PSI, 1/8" NPT
MCL-3K-B	Boost pressure, 0-40 PSI, sensor included, chrome bezel, blue display
MCL-3K-B-R	Boost pressure, 0-40 PSI, sensor included, chrome bezel, red display
MCL-3K-T	Air temperature, F or C, sensor included, chrome bezel, blue display
MCL-3K-T-R	Air temperature, F or C, sensor included, chrome bezel, red display

A LA CARTE INSTRUMENTS

MCL-30K-SPD	'96-'03 Speedometer, chrome bezel, blue
MCL-30K-SPD-R	'96-'03 Speedometer, chrome bezel, red
SEN-1011	Cable drive adapter (required for '96-'99 models)
MCL-30K-TCH	'96-'03 Tachometer, chrome bezel, blue
MCL-30K-TCH-R	'96-'03 Tachometer, chrome bezel, red
MCL-36K-SPD	'04-'13 Speedometer, chrome bezel, blue
MCL-36K-SPD-R	'04-'13 Speedometer, chrome bezel, red
MCL-36K-TCH	'04-'13 Tachometer, chrome bezel, blue
MCL-36K-TCH-R	'04-'13 Tachometer, chrome bezel, red
MCL-3K-FUL	'96-'13 Fuel Level, chrome bezel, blue
MCL-3K-FUL-R	'96-'13 Fuel Level, chrome bezel, red
MCL-3K-OIL	'96-'13 Oil Pressure, chrome bezel, blue
MCL-3K-OIL-R	'96-'13 Oil Pressure, chrome bezel, red
MCL-3K-TMP	'96-'13 Oil Temperature, chrome bezel, blue, sensor included
MCL-3K-TMP-R	'96-'13 Oil Temperature, chrome bezel, red, sensor included
MCL-3K-VLT	'96-'13 Voltmeter, chrome bezel, blue
MCL-3K-VLT-R	'96-'13 Voltmeter, chrome bezel, red



GPS COMPASS AND MORE

The new Dakota Digital MCL-GPS17 offers: Compass, Altimeter and Ambient Air Temperature information. See page 22 for more info.

MCL-GPS17	Blue display, chrome bezel
MCL-GPS17-K	Blue display, black bezel
MCL-GPS17-R	Red display, chrome bezel
MCL-GPS17-K-R	Red display, black bezel

MVX SERIES

ROADKING / SOFTAIL



MVX-2004 pictured

NEEDLE METERS

- Speedometer
- Tachometer

DIGITAL READOUTS

- Speed/RPM
- Voltmeter
- Cylinder head temperature (when factory equipped)
- Gear indicator
- Clock

PERFORMANCE READOUTS

- 0-60 Time
- 1/4 Mile time and speed
- High speed
- High RPM

INDICATORS

- Turn signal
- High beam
- Security
- Check engine
- ABS
- Oil pressure
- Low fuel
- Cruise on/engaged

NOW WITH
31
COLORS

MVX Fat Bob gauge (4.5" -5" dash opening) for Softail, Dyna, and Roadking. Thirty-one lighting colors available. Four background options to choose from black/gray, black/red, white/gray, white/red. Chrome or black bezels available. Add-on MBM modules are available (on page 4) to add Boost, Air Pressure, and Compass readings into the LCD display. Use SEN-1043 or SEN-1044 to add Oil Temperature readout. Use SEN-1039 to add Oil Pressure readout. The all new MVX-2004 and MVX-2011 are direct plug-in, while the MVX-2002 is cut-and-splice.



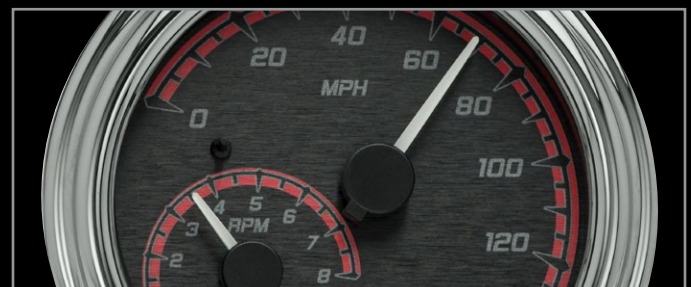
White/gray gauge face.



White/red gauge face.



Black/gray gauge face.



Black/red gauge face.



MVX FAT BOB GAUGE

MVX-2002 gauge is for '03 and older Softail, Dyna, and Roadking.

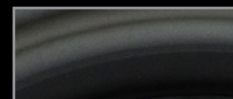
MVX-2002-KG-C	'96-'03 Tank mount black/gray, chrome
MVX-2002-KG-K	'96-'03 Tank mount black/gray, black
MVX-2002-KR-C	'96-'03 Tank mount black/red, chrome
MVX-2002-KR-K	'96-'03 Tank mount black/red, black
MVX-2002-WG-C	'96-'03 Tank mount white/gray, chrome
MVX-2002-WG-K	'96-'03 Tank mount white/gray, black
MVX-2002-WR-C	'96-'03 Tank mount white/red, chrome
MVX-2002-WR-K	'96-'03 Tank mount white/red, black

MVX-2004 gauge is for '04-'10 Softail, '04-'11 Dyna, and '04-'13 Roadking.

MVX-2004-KG-C	'04-'13 Tank mount black/gray, chrome
MVX-2004-KG-K	'04-'13 Tank mount black/gray, black
MVX-2004-KR-C	'04-'13 Tank mount black/red, chrome
MVX-2004-KR-K	'04-'13 Tank mount black/red, black
MVX-2004-WG-C	'04-'13 Tank mount white/gray, chrome
MVX-2004-WG-K	'04-'13 Tank mount white/gray, black
MVX-2004-WR-C	'04-'13 Tank mount white/red, chrome
MVX-2004-WR-K	'04-'13 Tank mount white/red, black

All MVX-2011 fit '11-Up Softail, '12-Up Dyna, and '14-Up Road King.

MVX-2011-KG-C	Tank mount black/gray, chrome
MVX-2011-KG-K	Tank mount black/gray, black
MVX-2011-KR-C	Tank mount black/red, chrome
MVX-2011-KR-K	Tank mount black/red, black
MVX-2011-WG-C	Tank mount white/gray, chrome
MVX-2011-WG-K	Tank mount white/gray, black
MVX-2011-WR-C	Tank mount white/red, chrome
MVX-2011-WR-K	Tank mount white/red, black



Black Bezel



Chrome Bezel



MCL-2000 SERIES ROAD KING / SOFTTAIL



New, high-brightness displays for your stock dash! Fitting models with a Fat Bob 4.5"-5" dash opening (various Softail, Road King, Fat Boy, Deuce, and Wide Glide models), this next generation offers a wealth of upgrades and improvements! The MCL-2004 & MCL-2011 offer a direct plug-in compatibility for extremely simple installation, while the MCL-2002 models easily hardwire into the bike's existing harness allowing more flexibility for custom applications. Both models feature high brightness LED displays for great daytime visibility!

- Fully adjustable 0-255 MPH (or km/h) Speedometer
- Wrap-around adjustable Tachometer, can also display in digital numeric readout
- Cylinder Head Temperature display (MCL-2004 and MCL-2011 only if factory equipped model)
- Oil/Air Pressure and Oil Temperature displays (sensors purchased separately, use of temperature display eliminates Cylinder Head Temperature readout)
- Gear shift position indicator (4 to 7 speed transmissions)
- Odometer is able to be user preset upon installation to match vehicle mileage!
- Dual resettable Trip Odometers
- Clock, Hourmeter, Voltmeter with low voltage alert and countdown service meter
- Indicators: high beam, left/right turn, neutral, low oil pressure, engine, security (ABS, cruise on/engaged, low fuel on MCL-2004 & MCL-2011)
- Triple-plated chrome, CNC machined bezels. Optional black bezel BZL-2000-K available.
- Performance displays: 0-60 timer, 1/4 mile time, and speed, high RPM/speed recall
- Auto night dimming

ROAD KING / SOFTTAIL MODELS

MCL-2002	Blue display, fits 2003 and older models or custom applications
MCL-2002-R	Red display, fits 2003 and older models or custom applications
MCL-2004	Blue display, fits '04-'13 Road King, '04-'10 Softail, '04-'11 Dyna
MCL-2004-R	Red display, fits '04-'13 Road King, '04-'10 Softail, '04-'11 Dyna
MCL-2011	Blue display, fits 2011-Up Softail, '12-Up Dyna, '14-Up Road King
MCL-2011-R	Red display, fits 2011-Up Softail, '12-Up Dyna, '14-Up Road King

ADD-ON OIL / AIR PRESSURE / TEMP SENSORS

SEN-1032	Add-on Oil/Air Pressure sensor, 0-75 PSI
SEN-1031	Add-on Oil/Air Pressure sensor, 0-150 PSI
SEN-1035	Add-on Oil/Air Pressure sensor, 0-400 PSI
SEN-1043	Add-on Oil Temp sensor, 1/8" NPT, 0-400 degree
SEN-1044	Add-on Oil Temp sensor, 3/8" NPT, 0-300 degree

MATTE BLACK BEZEL KIT

BZL-2000-K Fits MCL-2000 series models

SPEED SENSORS FOR MCL-2002 / PRE-'96 AND CUSTOM APPLICATIONS

SEN-6011	Cable drive adapter, Pre-'96 or custom apps (see page 16 for details)
SEN-6017	Transmission mount speed sensor (see page 16 for details)
SEN-6018	Rear-wheel speed sensor (see page 16 for details)
SEN-6019	Universal inductive speed sensor (see page 16 for details)



MCL-2000 SERIES
2010 SEMA
POWERSPORTS
PRODUCT OF THE YEAR

MCL-3200 SERIES

DYNA / SPORTSTER / ROCKER



3-3/8" ROUND INSTRUMENTS FOR SPORTSTER, DYNA, AND ROCKER MODELS.

We haven't forgotten about the Sportsters, Dynas, or Rockers! These direct plug-in instrument systems (with the exception of MCL-3200) make installation a breeze while adding a ton of features not found on OEM gauges! Features include:

- Fully adjustable 0-255 MPH (or km/h) Speedometer
- Arching adjustable Tachometer, can also display in digital numeric readout
- Gear shift position indicator (4 to 7 speed transmissions)
- Odometer is able to be user preset upon installation to match vehicle mileage! Dual resettable Trip Odometers
- Cylinder head temperature (on models with factory head temp sensor)
- Clock, Hourmeter, Voltmeter with low voltage alert, countdown service meter
- Indicators: engine, security low fuel (applicable to models with Fuel Level switch)
- Performance displays: 0-60 timer, 1/4 mile timer, 1/4 speed, hi RPM/speed recall
- Auto night dimming

MCL-3200	'94-'03 Dyna, '94-'03 Sportster models, chrome bezel, blue display
MCL-3200-K	'94-'03 Dyna, '94-'03 Sportster models, black bezel, blue display
MCL-3200-R	'94-'03 Dyna, '94-'03 Sportster models, chrome bezel, red display
MCL-3200-K-R	'94-'03 Dyna, '94-'03 Sportster models, black bezel, red display
MCL-3204	'04-'11 Dyna, '04-'13 Sportster models, chrome bezel, blue display
MCL-3204-K	'04-'11 Dyna, '04-'13 Sportster models, black bezel, blue display
MCL-3204-R	'04-'11 Dyna, '04-'13 Sportster models, chrome bezel, red display
MCL-3204-K-R	'04-'11 Dyna, '04-'13 Sportster models, black bezel, red display
MCL-3207	'08-'10 Rocker models, chrome bezel, blue display
MCL-3207-R	'08-'10 Rocker models, chrome bezel, red display
MCL-3212	'13-Up Breakout, '12-Up Dyna, '11-Up Softail, '14-Up Sportster, chrome bezel, blue display
MCL-3212-K	'13-Up Breakout, '12-Up Dyna, '11-Up Softail, '14-Up Sportster, black bezel, blue display
MCL-3212-R	'13-Up Breakout, '12-Up Dyna, '11-Up Softail, '14-Up Sportster, chrome bezel, red display
MCL-3212-K-R	'13-Up Breakout, '12-Up Dyna, '11-Up Softail, '14-Up Sportster, black bezel, red display



Rocker



Sportster



Sportster 48

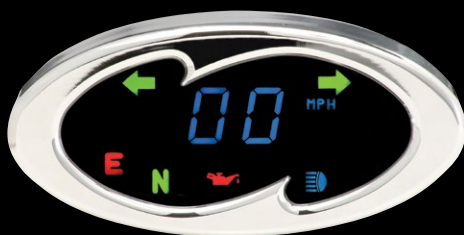
MCL-5000 SERIES UNIVERSAL INFORMATION SYSTEMS



The popular MCL-5000 series with a new color option!

Matte black powdercoating adds to the already sleek cosmetics, perfectly complementing a dark-themed bike. Mounting brackets (sold separately on page 16) round out the package, providing timeless styling to your custom motorcycle.

- 0-255 MPH or km/h Speedometer.
- Odometer with Trip Odometer.
- Turn signals, high beam, neutral, low oil, and engine indicators.
- Vibrant blue LED display for tremendous daylight visibility.



MCL-5100



MCL-5200



MCL-5400

As with all MCL series gauges, these Speedometers are easily visible in direct sun. Features include a 0-255 MPH / km/h adjustable Speedometer with Odometer and Trip Odometer. Also included are indicators for left and right turn, high beam, neutral, low oil pressure, and check engine. Uses BKT-50xx series brackets and SEN-60xx series speed senders. Available in three distinct shapes: MCL-5100 (oval), MCL-5200 (spike), and MCL-5400 (classic). The TSI-1 (page 20) will be required to retain the use of stock H-D self-canceling turn signals on some years and models.

MCL-5100 OVAL STYLE

4-1/2" x 2"

MCL-5100 Oval style, chrome housing

MCL-5100-K Oval style, black housing

MCL-5200 SPIKED STYLE

4-1/2" x 2"

MCL-5200 Spiked style, chrome housing

MCL-5200-K Spiked style, black housing

MCL-5400 CLASSIC STYLE

3-1/2" x 2"

MCL-5400 Classic style, chrome housing

MCL-5400-K Classic style, black housing



MCV-7000 SERIES UNIVERSAL INFORMATION SYSTEMS



The legendary MCV-7000 series with a new, evil twist! Matte black powdercoating adds to the already stunning appearance, perfectly complementing a dark-themed bike. Mounting brackets (sold separately on page 16) round out the package, adding a totally sinister look to your custom bike. Black available on MCV-7100, 7200, and 7400.

- 0-199 MPH or km/h Speedometer and quick-response Tachometer.
- Oil Pressure, Voltmeter, Clock, Gear Position, and Fuel Level displays.
- Odometer with Dual Trip Odometers and Countdown Service meter.
- Turn signals, high beam, neutral, low oil indicators.
- Service engine/wait-to-start indicators.
- Performance displays: 0-60 timer, 1/4 mile time/speed, high speed/RPM recall.

MCV-7000 SERIES STYLES



MCV-7100



MCV-7200



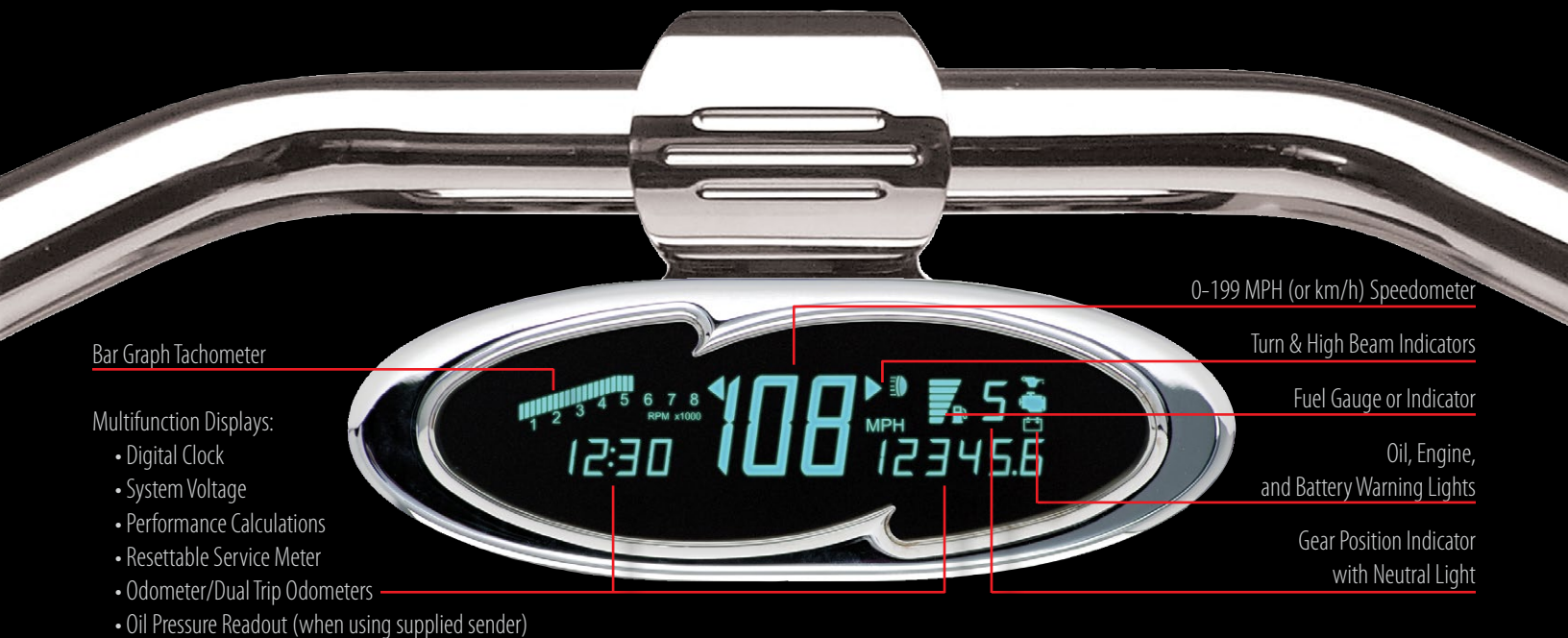
MCV-7300



MCV-7400

MCV-7000 DETAILS

UNIVERSAL INFORMATION SYSTEMS



Bar Graph Tachometer

Multifunction Displays:

- Digital Clock
- System Voltage
- Performance Calculations
- Resettable Service Meter
- Odometer/Dual Trip Odometers
- Oil Pressure Readout (when using supplied sender)

0-199 MPH (or km/h) Speedometer

Turn & High Beam Indicators

Fuel Gauge or Indicator

Oil, Engine,
and Battery Warning Lights

Gear Position Indicator
with Neutral Light

The MCV-7000 series is designed primarily for handlebar-mounted applications. The MCV-7100, 7200, and 7400 have the flexibility to mount either above or below the handlebars, with the MCV-7300 mounting above only. Dakota Digital offers a wide variety of mounts shown on page 16 to suit many common applications. To allow flexibility, the MCV-7000 can accept any type of electronic speed signal coming from an existing speed sensor, or many aftermarket varieties. If a speed signal does not exist, several options are shown on page 16 to allow simple installation in nearly any application.



MCV-7100 OVAL STYLE

6-1/2" x 2-1/4"

MCV-7100 Oval style, chrome housing

MCV-7100-K Oval style, black housing

MCV-7200 SPIKED STYLE

6-1/2" x 2"

MCV-7200 Spiked style, chrome housing

MCV-7200-K Spiked style, black housing

MCV-7300 HOODED STYLE

6-1/4" x 2-1/8" MCV-7300 features a machined aluminum hood over the instrument package as well as a contoured backplate.

MCV-7300 Hooded style, chrome housing

MCV-7400 CLASSIC STYLE

5-7/8" x 2"

MCV-7400 Classic style, chrome housing

MCV-7400-K Classic style, black housing

MCV-7000 SERIES CUSTOM STEEL HOUSINGS

Steel housings designed to replace standard chrome or black, used when welding into custom applications.

BKT-7021 Steel housing for MCV-7100

BKT-7022 Steel housing for MCV-7200

BKT-7023 Steel housing for MCV-7300

BKT-7024 Steel housing for MCV-7400

DIRECT PLUG-IN GAUGES BIG DOG, AMERICAN IRONHORSE, VICTORY

BIG DOG MOTORCYCLES



Tired of the analog Speedometer on your Big Dog? Want more cool features? We've got you covered! Offering a direct plug-in connection, a wealth of features are added consisting of MPH Speedometer, km/h Speedometer, Odometer, Dual Trip Odometers, 0-60 timer, 1/4 mile timer, and more!

BD-140 Series fits Big Dog models.

- BD-140 Blue display Speedometer
- BD-140-R Red display Speedometer

AMERICAN IRONHORSE MOTORCYCLES



Gauge sold separately, pages 13-14

AI-270 series utilizes any MCV-7000 series instrumentation.

*Note: MCV-7300 is limited to a "T-Bar" application, above handlebars only.

- AI-270 '02-'04 models, T-bar
- AI-271 '04-'06 models, V-bar
- AI-272 '07-Up models, V-bar

American Ironhorse owners rejoice! Dakota Digital instrumentation will now fit directly onto your bike without modifications. The install couldn't be simpler with proprietary brackets and harness assembly to make this a true "plug-and-play" upgrade!



Gauge sold separately, page 12

AI-250 series utilizes any MCL-5000 series instrumentation.

- AI-250 '02-'04 models, T-bar
- AI-251 '04-'06 models, V-bar
- AI-252 '07-Up models, V-bar

VICTORY MOTORCYCLES



Gauge sold separately, pages 13-14

Now your Victory motorcycle can sport Dakota Digital too! These specialized chrome brackets and harnesses make the installation effortless!

VM-150 utilizes any MCL-5000 series instrumentation (page 12)

- VM-150 '03-'10 models
(excludes Vision, Cross Country, Cross Roads)

VM-170 utilizes any MCV-7000 series instrumentation (pages 13-14)

- VM-170 '03-'10 models
(excludes Vision, Cross Country, Cross Roads)



T-BAR MOUNTS

- BKT-5016 7/8" handlebar, 2.2" wide/chrome
- BKT-5001 1" handlebar, 2.2" wide/chrome
- BKT-5001-K 1" handlebar, 2.2" wide/black
- BKT-5004 1-1/4" handlebar, 2.2" wide/chrome
- BKT-5004-K 1-1/4" handlebar, 2.2" wide/black
- BKT-5005 1-1/2" handlebar, 2.4" wide/chrome
- BKT-5005-K 1-1/2" handlebar, 2.4" wide/black



TRIPLE-TREE MOUNTS

- Flat triple-tree, fits pullback risers.
- BKT-5002 chrome
- BKT-5002-K black
- 35 degree triple-tree, fits straight risers.
- BKT-5003 chrome
- BKT-5003-K black



RISER MOUNTS

- BKT-5006 1" riser, chrome
- BKT-5007 1-1/4" riser, chrome
- BKT-5008 1-1/2" riser, chrome



VTX MOUNTS

- BKT-5009 VTX mount, pullback risers
- BKT-5014 VTX mount, straight risers



DEUCE MOUNTS

- BKT-5011 Deuce mount



SPORTSTER MOUNTS

- BKT-7010 Sportster custom, MCV-7100
- BKT-7020 Sportster custom, MCV-7200
- BKT-7040 Sportster custom, MCV-7400



SPEEDOMETER CABLE ADAPTER

Screws to end of Speedometer cable (5/8" and 16mm Speedometer cable threads). Sender is remotely mounted, not directly to Speedometer.

SEN-6011



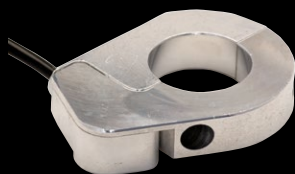
TRANSMISSION SPEED SENSOR

Transmission sensor mounts in stock transmission location on many '96-Up Harleys, as well as most aftermarket transmissions.

SEN-6017

Extension for '96-Up electronic transmission sensor (not shown).

SEN-6012



REAR WHEEL SPEED SENSOR

Clamps around axle spacer and used on most softail and rigid applications.

2" wide x 2-3/4" long x 1/2" thick, 1-3/32" hole.

SEN-6018



UNIVERSAL INDUCTIVE SPEED SENSOR

Reads rear drive pulley teeth or steel rear sprocket teeth.

1/2" diameter, 1" length.

SEN-6019

HLY-3000 SERIES

UNIVERSAL 3-3/8" ROUND INSTRUMENTS

The revolutionary HLY-3000 series digital instruments incorporate the latest in microprocessor and display technology coupled with the durability of machined aluminum housings and the brilliant look of chrome bezels. Offering you everything from a single 2-1/16" mini-Speedometer to a full complement of engine monitoring readouts in a 3-3/8" gauge, you can create your own look and statement. All HLY-3000 series instruments come with a teal display and a limited two-year warranty.



HLY-3011 PERFORMANCE SPEEDOMETER

Adjustable 0-199 MPH / km/h Speedometer 3-3/8" gauge. A unique alpha-numeric readout is used to display Odometer, Dual Trip Odometers, service meter, high speed recall, and 0-60 time. Also includes turn signal and high beam indicators.

HLY-3011 Speedometer



HLY-3021 PERFORMANCE TACHOMETER

Readouts display RPM along with high RPM recall, shift indicator set point, and Hourmeter, 0-18,000 RPM range. Adjustable from 1-15 cylinders. 3-3/8" size fits most aftermarket mounts.

HLY-3021 Tachometer



HLY-3016 COMBO SPEED/TACHOMETER

The HLY-3016 combination Speedometer/Tachometer is truly revolutionary. It offers a fully functional Speedometer, Tachometer, gear position indicator, Odometer, Dual Trip Odometers, and all of the necessary indicators including turn signals, high beam, and several others! Built inside a 3-3/8" housing. Also includes 0-60 timer, 1/4 mile time and speed, high-speed and RPM recall.

HLY-3016 Speed/Tachometer Combo



MULTI-FUNCTION INSTRUMENT DISPLAY

The HLY-3401 multifunction instrumentation display is contained within a standard 3-3/8" diameter housing. The HLY-3401 displays Voltmeter, Oil Pressure, Water or Oil Temperature, and Fuel Level readings. Pressure and temperature senders included. Fuel readout requires stock Harley fuel sender (not supplied).

HLY-3401 Multifunction

HLY-3000 SERIES UNIVERSAL 2-1/16" ROUND INSTRUMENTS



HLY-3015 MINI-SPEED/TACH COMBO

2-1/16" diameter and only 1" deep, adjustable Speedometer, full complement of indicators, adjustable Tachometer, MPH / km/h selectable, and blackout effect when off. External control module allows for simplified wiring. The unit contains all indicators including turn signals, high beam, neutral, low oil pressure, and check engine for fuel injected models. Selectable screens allow the rider to display Speedometer only, Speedometer with Odometer and Trip Odometer, or Speedometer with bar graph Tachometer. Menu driven setup allows easy configuration and calibration to any bike.

HLY-3015

Mini Speed/Tachometer Combo



HLY-3013 MINI-SPEED

Adjustable 0-255 MPH mini-Speedometer mounts in a conventional 2-1/16" opening or one of our cups. Contains both Odometer and resettable Trip Odometer. The TSI-1 (page 20) will be required to retain the use of stock H-D self-canceling turn signals on some years and models.

HLY-3013 MPH
HLY-3014 km/h



HLY-3027 MINI-TACH

Readout displays RPM with 0-18,000 RPM range with 10 RPM resolution below 10,000 RPMs and 100 RPM resolution above 10,000 RPMs. High RPM recall. Adjustable from 1 to 15 cylinders.

HLY-3027 Mini-Tachometer



HLY-3032 OIL PRESSURE

Range of 0-75 or 0-150 psi.
HLY-3032 Oil Pressure

Sender required:
SEN-1031 0-150 psi
SEN-1032 0-75 psi



HLY-3041 WATER TEMP

Range is user selectable of 0-400°F or 0-200°C with a resolution of 1°F or °C.

HLY-3041 Water Temperature

Sender required:
SEN-1043 1/8" NPT



HLY-3051 VOLTMETER

Range is 8-17.0 volts with a resolution of 0.1 volt.

HLY-3051 Voltmeter



HLY-3061 FUEL LEVEL

Range is 0-99% with a resolution of 1%. Uses stock Harley sender.

HLY-3061 Fuel Level

HLY-3000 SERIES UNIVERSAL 2-1/16" ROUND INSTRUMENTS



HLY-3073 OIL TEMP

Range is user selectable of 0-400°F or 0-200°C with a resolution of 1°F or °C.

HLY-3073 Oil Temperature

Sender required:

SEN-1043 1/8" NPT

SEN-1044 3/8" NPT



HLY-3111 CYLINDER HEAD TEMP

Range is user selectable from 150-750°F or 65-400°C with a resolution of 4°F or 3°C.

HLY-3111 Head Temperature

Sender required:

SEN-3111



HLY-3161 CLOCK/DATE/TEMP

The HLY-3161 individual round digital clock with Air Temperature. Includes temperature sensor and can also display the day of the week and date!

HLY-3161 Clock/Temp/Date



HLY-3191 AIR PRESSURE

Range of 0-150 or 0-400 psi.

HLY-3191 Air Pressure

Sender required:

SEN-1031 0-150 psi

SEN-1035 0-400 psi



HLY-3402 MINI MULTI-FUNCTION

The HLY-3402 contains several display options: Voltmeter, Oil Pressure, Water or Oil Temp, and your choice of Fuel Level or Air Pressure readings. Includes Oil Temperature and Pressure senders.

HLY-3402 Multifunction



CHROME MOUNTING CUPS

CUP-4001 1-7/8" diam. gauge

CUP-3001 2-1/16" diam. gauge

CUP-3301 3-3/8" diam. gauge

CUP MOUNTING BRACKETS



Bracket for CUP-3001/CUP-4001

BKT-3078 7/8" bars

BKT-3100 1" bars

BKT-3125 1-1/4" bars

BKT-3150 1-1/2" bars

Bracket for CUP-3301

BKT-3378 7/8" bars

BKT-3300 1" bars

BKT-3325 1-1/4" bars

BKT-3350 1-1/2" bars



RAW STEEL MOUNTING CUPS

CUP-4003 1-7/8" diameter gauge

CUP-3003 2-1/16" diameter gauge

CUP-3303 3-3/8" diameter gauge

MCL-4000 / HLY SERIES UNIVERSAL INSTRUMENTS



Now available in red or blue high brightness LED!

Measuring a tiny 1-7/8" diameter, these mini-gauges provide some large features. High-brightness red or blue display offers excellent sunlight readability. Gauges have a 2-1/16" bezel O.D. and measure 1-3/8" deep.

MCL-4013 MINI-SPEED

Adjustable 0-255 MPH mini-Speedometer. Contains both Odometer and resettable Trip Odometer. Uses 60xx series speed sensors (page 16). The TSI-1 (below, under HLY-1000 section) will be required to retain the use of stock H-D self-canceling turn signals on some years and models.

MCL-4013R Speedometer blue
MCL-4013R-R Speedometer red

MCL-4027 MINI-TACH

Readout displays RPM with 0-18,000 RPM range with 10 RPM resolution below 10,000 RPMs and 100 RPM resolution above 10,000 RPMs, high RPM recall.

Adjustable from 1 to 15 cylinders.

Compact 1-7/8" size.

MCL-4027R Tachometer blue
MCL-4027R-R Tachometer red

MCL-4073 OIL TEMPERATURE

Range: 0-400°F or 0-200°C. Resolution: 1°F or 1°C.

MCL-4073R Oil Temp, blue
MCL-4073R-R Oil Temp, red

Sender required:

SEN-1043 1/8" NPT
SEN-1044 3/8" NPT

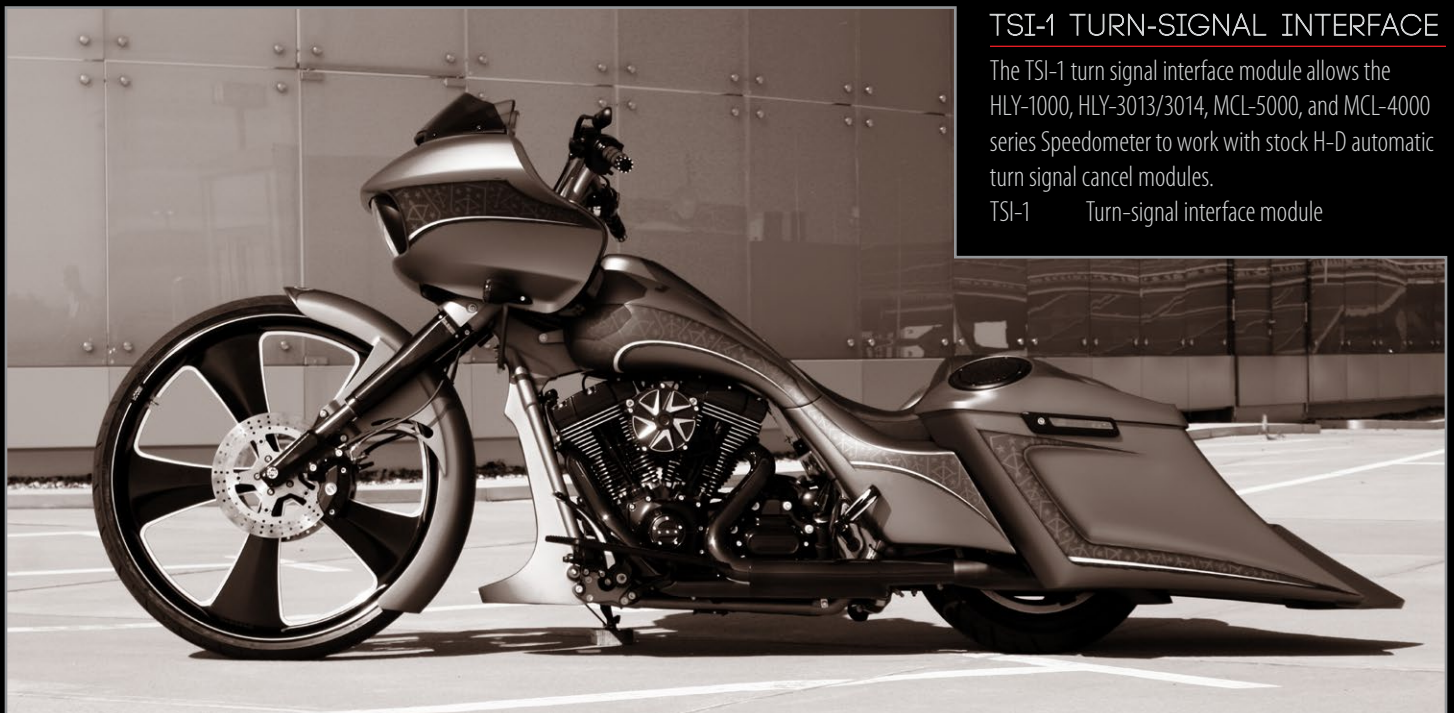
MCL-4032 OIL PRESSURE

Range of 0-75 or 0-150 psi.

MCL-4032R Oil psi, blue
MCL-4032R-R Oil psi, red

Sender required:

SEN-1031 0-150 psi
SEN-1032 0-75 psi



TSI-1 TURN-SIGNAL INTERFACE

The TSI-1 turn signal interface module allows the HLY-1000, HLY-3013/3014, MCL-5000, and MCL-4000 series Speedometer to work with stock H-D automatic turn signal cancel modules.

TSI-1 Turn-signal interface module

STM / SEN SERIES ACCESSORIES



**MAKE YOUR INSTALL
EASIER ON YOUR
'04-'13 BIKE!**

STM-100 DATA BUS BREAK OUT

The STM-100 allows you to interface universal Dakota Digital, and most aftermarket Speedometers and/or Tachometers, with the databus signal created from the stock Harley Davidson ECU '04-'13 (excluding 2011-Up Softail and 2012-Up Dyna models).

This device connects to the bike's databus and outputs traditional analog signals for a gauge of your choice. Outputs provided for accessory power and ground, Tachometer signal (adjustable for 1, 2, or 4 cylinder outputs), Speedometer signal (8,000 ppm), in addition to the check engine signal, normally only available on the databus.

In addition to wired outputs, the STM-100 contains a digital readout, which allows for both reading back and clearing diagnostic trouble codes, similar to a scan tool!

STM-100

ANT-2000 ELECTRONIC HIDDEN ANTENNA

The ANT-2000 electronic AM/FM weatherband hidden antenna is great for cleaning up your touring bike by eliminating the unsightly mast antenna. It can be hidden inside your plastic or fiberglass fairing and plugs directly into any standard antenna jack. Only 3-1/2" x 3/4" in size and comes with three feet of cable. Requires connection to switched 12 volts and is sealed from dirt and moisture (does not work for CB).

ANT-2000 Hidden antenna



SIM-1A ELECTRIC SPEEDO. INTERFACE MODULE

The SIM-1A electric speed correction module will plug into '96-'06 Harley Davidson speed sensor harnesses to correct the Speedometer and Odometer after a change in tire size, pulley size, or transmission gearing. The unit plugs directly between the stock transmission sensor and original Speedometer.

SIM-1A '95-'03 Sportster, '96-'06 Softail, and '96-'05 Dyna applications

SIM-1A-M Metric cruisers

SIM-1A-GL Honda Goldwing



ENGINE SENSORS



SEN-1031

SEN-1031 Oil and Air Pressure. Bolts directly to engine. 1/8" NPT polished metal finish.

SEN-1032 0-75 psi

SEN-1031 0-150 psi

SEN-1035 0-400 psi



SEN-3111

SEN-3111 Cylinder-Head Temperature sensor mounts to head or rocker cover bolt. 6' length.

SEN-3111



SEN-1043

SEN-1043 Oil/Water Temperature 0-400°F screws into crankcase or oil reserve tank (drilling and tapping required) or oil line using appropriate fittings.

SEN-1043 1/8" NPT



SEN-1044

SEN-1044 Oil Temperature 0-300° F fits models with oil tank below transmission.

SEN-1044 3/8" NPT

PGR / MCL SERIES GEAR POSITION & GPS COMPASS SYSTEMS

PGR-1000 SERIES GEAR INDICATORS

Now available in chrome or matte black with blue or red high-brightness LED!

Another revolutionary product from Dakota Digital, the PGR series of programmable gear indicators are truly unique! Displays 1-7 forward gears including neutral, while providing simple programming for any application. Sunlight visible blue or red display automatically dims for night riding. Simple 5-wire hook up, no extra senders required if bike has factory electronic speed sensor! Measures 1-1/4" diameter x 2-5/8" deep! Includes display, harness, and instructions.



HANDLEBAR MOUNT GEAR INDICATORS

PGR-1078	7/8" handlebars, chrome, blue
PGR-1100	1" handlebars, chrome, blue
PGR-1100-K	1" handlebars, black, blue
PGR-1100-R	1" handlebars, chrome, red
PGR-1100-K-R	1" handlebars, black, red
PGR-1125	1-1/4" handlebars, chrome, blue
PGR-1125-K	1-1/4" handlebars, black, blue
PGR-1125-R	1-1/4" handlebars, chrome, red
PGR-1125-K-R	1-1/4" handlebars, black, red
PGR-1150	1-1/2" handlebars, chrome, blue
PGR-1150-K	1-1/2" handlebars, black, blue
PGR-1150-R	1-1/2" handlebars, chrome, red
PGR-1150-K-R	1-1/2" handlebars, black, red

FLUSHMOUNT GEAR INDICATORS

Flushmount gear indicator requires a 1-1/4" hole.

PGR-1000-F	Flushmount, chrome, blue
PGR-1000-F-K	Flushmount, black, blue
PGR-1000-F-R	Flushmount, chrome, red
PGR-1000-F-K-R	Flushmount, black, red



STAND-ALONE GPS COMPASS

The new Dakota Digital MCL-GPS17 gauges offer: Compass, Altimeter and Ambient Air Temperature information and are designed to match your Dakota Digital MCL-3000-OT, MCL-3000-R, MCL-3006-OT or MCL-3006-R replacement instruments for 1996- 2013 Harley Davidson baggers.

The MCL-GPS17 instrument has an internal, GPS-based Compass and Altimeter sensor for easy installation (no external antenna required) and offers the following features:

- 8 position Compass heading: N, NE, E, SE, S, SW, W, NW.
- Ambient Air Temperature - uses the factory Ambient Air Temperature sender
- Altimeter
- GPS time - automatically updates the Clock to the correct minute
- Choice of Bezel Option: Chrome or Black bezels
- Available to match current MCL-3000-series instruments: Red or Blue LED lighting

Why would you want a Dakota Digital GPS Compass over a cheaper, traditional magnetic compass? Simple connectivity; plug into stock harness and you're ready to ride! No need to worry about sender placement or interference from stereo components. The Dakota Digital GPS compass is self-contained; no external antenna needed!

MCL-GPS17	LED Add-on GPS compass blue/chrome
MCL-GPS17-K	LED Add-on GPS compass blue/black
MCL-GPS17-R	LED Add-on GPS compass red/chrome
MCL-GPS17-K-R	LED Add-on GPS compass red/black



Choose reliable motorcycle electrical components offered on our website.