

2018 CATALOG



REARSETS

TT Rearsets

Ducati Panigale 1199
Honda Grom MSX 125
Honda CBR 500R/F
Yamaha R6
Kawasaki Ninja 636
Triumph 675/R
Honda CBR 1000RR
Yamaha FZ 07
Suzuki GSXR 650/700
Yamaha R1 (09-14)
BMW 1000R / 1000RR
Suzuki GSXR 1000
Kawasaki ZX-10R
Yamaha FZ-09
Yamaha R-1/M (2015)
BMW S1000RR
Aprilia RSV4 APRC
KTM RC 390
Suzuki GSXR 1300R
Kawasaki ZX-10R
Kawasaki Z125(2017)
Yamaha FZ-10(2017)
Honda Grom SF(2017)
Honda CBR650/F (14-16)
Yamaha R3 (15-17 RACE ONLY)
Yamaha R6 (2017)
Suzuki GSXR1000 (2017)
BMW R9T (14-16)

CONTROL

Clipons

HALO Clipons
37mm Riser Clipons
48mm, 50mm Riser Clipons
Clipon Tubes
Universal Reservoir Bracket
Damper Mount
Clipon Hardware
HALO Levers
Lever Adjuster

Shifter

MX Folding Shifter
Roadrace Folding Shifter

Grips

Grip Halo Stainless Steel
Grip Diamond Logo Hard Compound
Grip D3
Grip D-AXIS
Grip D-AXIS SS
Grip Superbike
Grip Diamond
Grip Diamond Thin
Grip Sport Touring
Grip Supermoto
Grip Skully
Grip Pro Waffle
Grip Half Waffle
Grip Full Waffle
Grip Diamond Scooter
Grip D-Axis Replacement
Grip D3 Replacement
Grip Vintage
Grip Pulse

DRIVE

Sprockets

7075 Aluminum Sprocket
Ducati 7075 Aluminum Sprocket
Ducati Sprocket Carrier
Chrome Steel Sprocket
Steel Sprocket Evo-Spec
Steel Sprocket Countershaft
7075 Aluminum 8Mm X 1.25 Sprocket Nuts
7075 Aluminum 10Mm X 1.25 Sprocket Nuts
7075 Aluminum 10Mm X 1.50 Sprocket Nuts
7075 Aluminum 12Mm X 1.5 Sprocket Nuts
7075 Aluminum 10Mm X 1.0 Cush Drive Nuts
7075 Aluminum 10Mm X 1.25 Cush Drive Nuts

RACING COMPONENTS

D-AXIS Lever Guard
Billet Top Triple Clamp
Captive Wheel Spacers
Axleblock Sliders
Mirror Eliminators
D-AXIS Stand Spools
Shark Guard
Drilled Oil Filler Cap
Block Off Plates
Pre Load Adjusters
Mantis

D-AXIS FUEL CAPS

Triumph 675 Fuel Cap
Ducati Diavel Fuel Cap
BMW 1000RR Fuel Cap
Yamaha R1 Fuel Cap

HALO FUEL CAPS

Halo Fuel Cap

PREMIUM ACCESSORIES

California Standard Mirror
Gravity Mirror
D-AXIS Bar End Mirror
D-AXIS Bar End System
Bar End Weights v1
Bar End Weights v2
Bar End Weights Driven SS
HALO Stainless Steel Bar End System
Bar End Mirror Adapters
Bar End Adapter Kit
Bar End Adapter Kit (Kawasaki)
Bar End Adapter Kit (Ducati)
Bar End Adapter Kit (Yamaha FZ)
Bar End Adapter Kit (BMW)
Fluid Container

INDEX

HONDA GROM ACCESSORIES

Countershaft Sprocket Cover
Timing Cover
Oil Filler Cap w/ Dipstick
Engine Plug Large
Engine Plug Small
Endurance Cups

DRIVEN GARAGE

Bike Armor Motorbike Cover
DRIVEN Chain Juice
DRIVEN Chain Tool
DRIVEN Chain Breaker
RK Chain Tool
Threebond Griplock
Paddock Stands
GP Style Lifters
Turn Indicators
Fender Eliminator

APPAREL

T-Shirts
Hoodies
Hats
Beanies
Patches
DRIVEN Reservoir Cover/Wristbands

DISTRIBUTED PRODUCT

3D Premium Chain
EK Chains
RK Chains
RK Chain Tool

REPLACEMENT PARTS

100078 Bearing
100102 Captive Nut and Bolt
DRP-011LH
DRP-011RH
DRP-007-GPU
M6 Male Heim Joint Right Hand Thread
M6 Male Heim Joint Left Hand Thread
M6 Female Heim Joint Right Hand Thread
Shift Rods Shift Rod 3"-9"





FLUID CONTAINER

TT REARSETS

Made up of only essential components and materials. Although retaining most of the features you would expect from a Driven rearset, the **race inspired TT** model showcases the best of both worlds using actual pieces originally designed to be proprietary to the TT-Rearsets.



Ducati Panigale 1199 / 899

- High grade hardware, adjustable folding toe pegs, standard/reverse shift, 4 different mounting positions up to 18mm up and 18mm back from "0" position.

- Colored footpeg plates feature a small window which reads adjustment values for each individual footpeg position while concealing any mounting holes that are not in use.

Plate Color Options:



Honda Grom MSX 125

- High grade hardware.
- Adjustable folding toe pegs.
- Standard/reverse shift, 4 different mounting positions up to 18mm up and 18mm back from "DEM" position.
- Lightweight TT design.

Color Options:



Honda CBR 500R/F

- High grade hardware.
- Adjustable folding toe pegs.
- Standard/reverse shift.
- 9 different mounting positions up to 32mm up and 32mm back.
- Lightweight TT design.

Color Options:



YAMAHA R6

- High grade hardware.
- Adjustable folding toe pegs.
- Standard/reverse shift.
- 6 different mounting positions up to 32mm up and 34mm back from "0" position
- Lightweight TT design.

Color Options:



KAWASAKI NINJA 636

- High grade hardware.
- Adjustable folding toe pegs.
- Standard/reverse shift.
- 6 different mounting positions up to 32mm up and 34mm back from "0" position
- Lightweight TT design.

Color Options: 



TRIUMPH 675/R & STREET TRIPLE R

- High grade hardware.
- Adjustable folding toe pegs.
- Standard/reverse shift.
- 6 different mounting positions up to 38mm up and 16mm back from "0" position
- Lightweight TT design.

Color Options: 



HONDA CBR 1000RR

- High grade hardware.
- Adjustable folding toe pegs.
- Standard/reverse shift.
- 6 different mounting positions up to 38mm up and 16mm back from "0" position
- Lightweight TT design.

Color Options: 



YAMAHA FZ 07 (2015)

- High grade hardware.
- Adjustable folding toe pegs.
- Standard/reverse shift.
- 6 different mounting positions up to 32mm up and 34mm back from "0" position
- Lightweight TT design.

Color Options: 



SUZUKI GSXR 600/750

- High grade hardware.
- Adjustable folding toe pegs.
- Standard/reverse shift.
- 6 different mounting positions up to 32mm up and 34mm back from "0" position
- Lightweight TT design.

Color Options: 



YAMAHA R1

- High grade hardware.
- Adjustable folding toe pegs.
- Standard/reverse shift.
- 6 different mounting positions up to 32mm up and 34mm back from "0" position
- Lightweight TT design.

Color Options: 



BMW 1000R/1000RR

- High grade hardware.
- Adjustable folding toe pegs.
- Standard/reverse shift.
- 6 different mounting positions up to 32mm up and 34mm back from "0" position
- Lightweight TT design.

Color Options: 



BMW 1000RR Race Edition

- High grade hardware.
- Adjustable folding toe pegs.
- Standard/reverse shift.
- Relocation plates which allow the rearset to sit higher.
- High grade hardware, adjustable folding toe pegs, standard/reverse shift, 4 different mounting positions up to 32mm up and 32mm back from "0" position.

Color Options: 



HONDA CBR 600RR

- High grade hardware.
- Adjustable folding toe pegs.
- Standard/reverse shift.
- 6 different mounting positions up to 38mm up and 16mm back from "0" position
- Lightweight TT design.

Color Options: 



SUZUKI GSXR 1000

- High grade hardware.
- Adjustable folding toe pegs.
- Standard/reverse shift.
- 6 different mounting positions up to 32mm up and 34mm back from "0" position
- Lightweight TT design.

Color Options: 



YAMAHA FZ-09

- High grade hardware.
- Adjustable folding toe pegs.
- Standard/reverse shift.
- 6 different mounting positions up to 38mm up and 16mm back from "0" position
- Lightweight TT design.

Color Options: 



YAMAHA R-1/M

- High grade hardware, adjustable folding toe pegs, standard/reverse shift, 4 different mounting positions up to 18mm up and 18mm back from "0" position.
- Colored foot peg plates feature a small window which reads adjustment values for each individual foot peg position while concealing any mounting holes that are not in use.

Plate Color Options:     



BMW S1000RR

- High grade hardware.
- Adjustable folding toe pegs.
- Standard/reverse shift.
- High grade hardware, adjustable folding toe pegs, standard/reverse shift, 4 different mounting positions up to 32mm up and 34mm back from "0" position.

Color Options: 



APRILIA RSV4 (APRC ONLY)

- High grade hardware.
- Adjustable folding toe pegs.
- Standard/reverse shift.
- High grade hardware, adjustable folding toe pegs, standard/reverse shift, 4 different mounting positions up to 32mm up and 34mm back from "0" position.

Color Options: 



KTM RC 390


- High grade hardware.
- Adjustable folding toe pegs.
- Standard/reverse shift.
- High grade hardware, adjustable folding toe pegs, standard/reverse shift, 4 different mounting positions up to 32mm up and 34mm back from "0" position.

Color Options: 



SUZUKI GSXR 1300R

- High grade hardware, adjustable folding toe pegs, standard/reverse shift, 4 different mounting positions up to 18mm up and 18mm back from "0" position.
- Colored footpeg plates feature a small window which reads adjustment values for each individual footpeg position while concealing any mounting holes that are not in use.

Plate Color Options:     



KAWASAKI ZX-10R

- High grade hardware.
- Adjustable folding toe pegs.
- Standard/reverse shift.
- High grade hardware, adjustable folding toe pegs, standard/reverse shift, 4 different mounting positions up to 32mm up and 34mm back from "0" position.

Color Options: 



KAWASAKI Z125

- High grade hardware.
- Adjustable folding toe pegs.
- Standard/reverse shift.
- High grade hardware, adjustable folding toe pegs, standard/reverse shift, 4 different mounting positions up to 32mm up and 34mm back from "0" position.

Color Options: 



YAMAHA FZ-10 (2017)

- High grade hardware.
- Adjustable folding toe pegs.
- Standard/reverse shift.
- High grade hardware, adjustable folding toe pegs, standard/reverse shift, 4 different mounting positions up to 32mm up and 34mm back from "0" position.

Color Options:



YAMAHA R3 '15-'17(RACE ONLY)

- High grade hardware.
- Adjustable folding toe pegs.
- Standard/reverse shift.
- High grade hardware, adjustable folding toe pegs, standard/reverse shift, 4 different mounting positions up to 32mm up and 34mm back from "0" position.

Color Options:



SUZUKI SV 650 (2017)

- High grade hardware.
- Adjustable folding toe pegs.
- Standard/reverse shift.
- High grade hardware, adjustable folding toe pegs, standard/reverse shift, 4 different mounting positions up to 32mm up and 34mm back from "0" position.

Color Options:



YAMAHA R6 (2017)

- High grade hardware.
- Adjustable folding toe pegs.
- Standard/reverse shift.
- High grade hardware, adjustable folding toe pegs, standard/reverse shift, 4 different mounting positions up to 32mm up and 34mm back from "0" position.

Color Options:



HONDA GROM SF (2017)

- High grade hardware.
- Adjustable folding toe pegs.
- Standard/reverse shift.
- High grade hardware, adjustable folding toe pegs, standard/reverse shift, 4 different mounting positions up to 32mm up and 34mm back from "0" position.

Color Options:



FOOT PEG ULTRA GP

- Designed to fit all D-Axis or TT Rearsets.
- Multiple layers of serration and grip points.
- Machined out of 6061 billet aluminum.
- Super light, super strong and it has super grip.
- Anodized black and it comes with an M10 bolt.

Color Options:



HONDA CBR 650/F ('14-'16)

- High grade hardware.
- Adjustable folding toe pegs.
- Standard/reverse shift.
- High grade hardware, adjustable folding toe pegs, standard/reverse shift, 4 different mounting positions up to 32mm up and 34mm back from "0" position.

Color Options:



CONTROL CLIPONS

Sporty clip on handlebars for your street or sport bike. Driven has made these Clip-On bars to look great and perform even better. Ultimate strength and unmatched anodized color. Laser etched with precision equipment.



HALO Clipons

- Our clip ons are designed and manufactured right here in the USA.
- The clamps are constructed out of aerospace grade 7075-T6 aluminum while the bars are constructed out of 6061-T6 aluminum for strength and durability.

Color Options: 

Clip on Tubes

- All bars are machined from 6061 billet alloy.
- Anodized to further increase corrosion resistance and durability.
- Each piece is carefully inspected and laser etched with our logo. Hollow lightweight design, with bar end slider included.

Color Options:     



Universal Reservoir Bracket

- Specially designed for mounting your brake reservoir to any 7/8 bar.
- Multiple holes make mounting your brake reservoir easier than ever while the 5mm pinch bolt keeps everything place where it should be.

Color Options: 



Damper Mount 07-11 Yamaha R1

- When replacing the OEM clip ons, you will require this piece to mount any OEM style damper.

Color Options: 



Clip on Hardware

- Replacement hardware for Driven clip ons, a must have for any racer's toolbox.

Color Options: 



HALO



HALO LEVERS

- Aero slot to reduce wind drag
- 6061 TC CNC machined construction
- Folds 90 degrees to eliminate breakage
- Cam roller rides on a roller bearing

Color Options:



Brake Lever



Clutch Lever



LEVER ADJUSTER

- Billet aluminum construction
- Fully adjustable for maximum control
- High strength flex drive wire
- 1.250" knob for ease of use with gloves on

Brake Lever



CONTROL CARBON

Aluminum bar wrapped in carbon, Euro SBK bend ideal for all naked motorbikes, Slight weight savings over standard aluminum bars.



Meteor Carbon

- Aluminum bar wrapped in carbon.
- 1.125" Clamping area/7/8" control area.
- Euro SBK bend ideal for all naked motorbikes.
- All popular MX bends available.
- Slight weight savings over standard aluminum bars.
- Beautiful carbon fiber finish.

CONTROL HANDLEBARS

Alloy construction for reduced weight and increased strength.
 Engineered flex properties to improve longevity and reduce rider fatigue.
 Shotpeened and then anodized for protection from corrosion.
 Bar pad is included at no additional cost.
 Direct bolt on for 1-1/8 clamps, 7/8 adapters available.



Meteor Fat Bar

- Our Meteor bars are available in all the popular MX bends.
- With a free bar pad.
- Bar diameter is 1 1/8".

Color Options:

Adjustable Risers

• Machined from 6061 billet aluminum and then anodized in beautiful black. Designed to be fully adjustable either forward or backwards. These adjustable bar mounts will fit directly into any 1 1/8" perch allowing the use of any 1 1/8" (fat bar) handlebars or 7/8 (standard) handlebars. These mounts have a 1.5" rise.

Color Options:



Top Triple Tree Risers

• Machined from 6061 billet aluminum and then anodized in beautiful black. These top triple tree bar mounts will fit directly onto the top triple tree allowing the use of any 1 1/8" (fat bar) handlebars. These mounts have a .75" rise.

Color Options:



Universal Risers

• Machined from 6061 billet aluminum and then anodized in beautiful black. These universal bar mounts will fit directly into any 7/8" perch allowing the use of any 1 1/8" (fat bar) handlebars. There are two height options available as well, regular or high. These mounts have either a .75" rise or a 1.25" rise for the high version.

Color Options:



Driven Bar Pads

- Driven handlebar pads for 7/8 bars and 1 1/8 bars
- Perfect for customization or replacement of your current pad.

Color Options:



Handlebar Dimensions

	ATV	CR HIGH	CR LOW	KX	MINI	RM	SBK	SX	YZ	SBK CARBON
CLAMP AREA	205	205	200	200	172	222	191	210	210	127
HEIGHT	95	95	85	74	100	60	114	65	92	76
RISE	70	70	60	53	85	52	86	53	56	51
SWEEP	62	57	57	57	55	57	128	4	57	102
WIDTH	795	5	802	798	750	800	736	810	803	724

CONTROL SHIFTERS

Driven Folding Shift Levers allow you to replace those heavy stock OEM shift levers with light weight, durable, folding tip shifter that looks as good as it functions. A super strong spring in the tip of the shifter insures fast spring back when the shifter touches the ground and helps to prevent damage to the shifter.

Applications to fit all motocross and off road bike and some street models as well.

Available in anodized titanium with a black no slip tip.



MX Folding Shifter

- High grade aluminum.
- A broche is use to broach the splines connecting the shifter to the transmission output shaft.
- Uses a high grade 8mm fastener to secure it tightly to the shaft completes the package.

Color Options:



Roadrace Folding Shifter

- High grade aluminum.
- A broche is use to broach the splines connecting the shifter to the transmission output shaft.
- Uses a high grade 8mm fastener to secure it tightly to the shaft completes the package.

Color Options:



CONTROL GRIPS

DRIVEN USA grips are designed using the most advanced grip technology eliminating arm pump and reducing vibration through a combination PVC and Krayton Gel.

Grip Halo Stainless Steel

- Proprietary 2 ply Krayton gel design design for maximum comfort.
- Anodized Aluminum/Stainless Steel collars to increase durability.
- Open end design.

Collar Color Options:




Grip Diamond Logo Hard Compound

- 2 ply grips designed to reduce arm soreness, arm pump and are available in an open end configuration.
- The grips are made from a top ply of pvc sleeve design to stabilize the surface of the grip, under this layer is a layer of krayton gel designed to absorb vibration and impact.

Color Options:




Grip D3

- Ends are billet aluminum.
- One piece double ply gel grip.
- No set screws to rattle off or any other parts.
- Grip consists of just three pieces.
- Gel grip and collars may be swapped out for other colors at any time. (sold separately)
- Fits most modern sportbikes with 7/8th inch bars & 4.84" inside length.
- Will not interfere with bar ends.
- Fits most modern sportbikes with 7/8th inch bars and 4.84" inside length. Will not interfere with bar ends

Collar Color Options:




Grip D-AXIS

- Proprietary 2 ply Krayton gel design design for maximum comfort.
- Anodized collars to increase durability.
- Open end design.


Collar Color Options:




Grip D-AXIS SS

- Proprietary 2 ply Krayton gel design design for maximum comfort.
- Stainless collars to match Driven SS Bar Ends.
- Open end design.

Collar Color Options:




Grip Superbike

- 2-Ply grip designed to reduce vibration, arm pump and hand fatigue. Made from an outer ply of PVC designed to stabilize grip surface, surrounding a second layer of Krayton gel to absorb vibrations.
- Features a no-slip dual texture in the PVC.
- Open end design for all street applications.
- Closed end MX design for all off road applications

Color Options: 



Grip Diamond

- Well known for being one of the most comfortable riding grips available today

Color Options: 



Grip Diamond Thin

- Ultra thin grip developed specifically for race use.
- Open end only

Color Options: 



Grip Sport Touring

- Padded pockets and our proprietary PVC and Krayton Gel layer technology.

Color Options: 



Grip Supermoto

- Combination of the Grippy Grip & full-waffle grip
- Molded using a diamond pattern with specially designed ridges on the front of the grip to enhance contro over dirt sections of the track
- Open-end grip fits 7/8in bars with 4.92in inside length

Color Options: 



Grip Skully

- 2-Ply grip designed to reduce vibration, arm pump and hand fatigue
- Made from an outer ply of PVC, designed to stabilize grip surface, / surrounding a second layer of Krayton gel to absorb vibrations.
- Features skull design in the PVC
- Open end design for all street applications
- Closed end MX design for all off road applications
- MX features high flange for maximum control while riding

Color Options: 



Grip Pro Waffle

- These new closed end grips are designed using our same proprietary Krayton Gel & PVC, combining both layers for excellent feedback and comfort while riding.

Color Options: 



Grip Half Waffle

- 2 PLY GRIP PVC & KRATON GEL 2 TONE

Color Options: 



Grip Full Waffle

- 2 PLY GRIP PVC & KRATON GEL 2 TONE

Color Options: 



Grip Diamond Scooter

- These new closed end grips are designed using our same proprietary Krayton Gel & PVC
- Combining both layers for excellent feedback and comfort while riding

Color Options: 



Grip D3 Replacement

- Proprietary 2 ply krayton gel design
- Anodized to increase durability
- Gel grip design for maximum comfort
- Open end design

Color Options: 



Grip D-Axis Replacement

- Same kraton gel as all of our popular Driven grips
- Designed to reduce vibration and arm pump while adding a custom look to any bike

Color Options: 



Vintage Grip

- 13mm long to fit most pre 1990 bikes
- 38mm center diameter
- 46mm flange
- Fits all 7/8 motorcycle

Color Options: 



Pulse Grip

- Designed for long distance riders and commuters
- Trapeziod Shape
- Made of pvc rubber with a medium compound to last
- Open end design for all street applications
- The grips fits all 7/8 bar machines

Color Options: 



DRIVE SPROCKETS

All Sprockets are plated for: corrosion, wear resistance, and reducing overall friction for the life of the product. We only use the highest quality raw materials to ensure maximum life. Laser etching of logo & part number insure correct fit.



7075 Aluminum Sprocket

- Ultra lightweight design enhances performance without sacrificing integrity and durability.
- Alloy sprockets are anodized in the colors below.

Color Options:

Ducati 7075 Aluminum Sprocket

- Each sprocket is machined from 7075-T6 alloy and then stage 2 anodized in colors below.

Color Options:



Ducati Sprocket Carrier

- 7075 T-6 aluminum.
- Anodized in black to further increase resistance to corrosion.
- High grade hardware and wave washers to keep things in place.
- This carrier must be used with a DRIVEN sprocket.

Color Options:



Chrome Steel Sprocket

- Using the same steel as our Steel sprockets to retain the strength and longevity our customers are accustomed to.
- After the sprockets are made and double checked for accuracy they are dipped in chrome to give you the shiny look for your stretched custom or your bike night stunner.
- We finish this shiny package with laser etching the part number, pitch and the DRIVEN logo.

Color Options:



Steel Sprocket Evo-Spec

- One of the lightest 520 steel sprockets available today
- Designed using our proprietary EST Technology
- Performance and longevity all in one sprocket
- Lowered surface to remove unnecessary weight

Color Options: 



7075 Aluminum 8mm X 1.25 Sprocket Nuts

- Machined out of 7075 T 6511 alloy.
- Each sprocket nut is machined to exact tolerances and then anodized for corrosion resistance.
- We laser etch the torque specs on each nut along with company insignia.

Color Options:     



7075 Aluminum 10mm X 1.25 Sprocket Nuts

- Machined out of 7075 T 6511 alloy.
- Each sprocket nut is machined to exact tolerances and then anodized for corrosion resistance.
- We laser etch the torque specs on each nut along with company insignia.

Color Options:     



7075 Aluminum 10mm X 1.50 Sprocket Nuts

- Machined out of 7075 T 6511 alloy.
- Each sprocket nut is machined to exact tolerances and then anodized for corrosion resistance.
- We laser etch the torque specs on each nut along with company insignia.

Color Options:     



7075 Aluminum 12mm X 1.5 Sprocket Nuts

- Machined out of 7075 T 6511 alloy.
- Each sprocket nut is machined to exact tolerances and then anodized for corrosion resistance.
- We laser etch the torque specs on each nut along with company insignia.

Color Options:     



7075 Aluminum 10mm X 1.0 Cush Drive Nuts

- Machined out of 7075 T 6511 alloy.
- Each sprocket nut is machined to exact tolerances and then anodized for corrosion resistance.
- We laser etch the torque specs on each nut along with company insignia.

Color Options:     



7075 Aluminum 10mm X 1.25 Cush Drive Nuts

- Machined out of 7075 T 6511 alloy.
- Each sprocket nut is machined to exact tolerances and then anodized for corrosion resistance.
- We laser etch the torque specs on each nut along with company insignia.

Color Options:     



Steel Sprocket Countershaft

- One of the lightest 520 steel sprockets available today.
- Designed using our proprietary EST Technology.
- Performance and longevity all in one sprocket.
- Drilled to remove unnecessary weight.

Color Options: 



RACING COMPONENTS

The Driven D-Axis Brake Lever Guard is designed to fit most any application, from aftermarket clip ons to stock. Each Lever Guard includes the hardware for installation on aftermarket or stock bars with a total of 5 possible mounting options. Designed to fit your bike with ease. Being safe shouldn't be option for only a few riders so we naturally designed our guards for the masses in true Driven style.



D-AXIS Lever Guard [available for break and clutch applications]

- Curved body for safe dismounting from motorbike.
- 45mm of adjustment up to 171mm in total length.
- Break-away tip to help avoid bikes/riders from becoming attached after collision.
- Kits are available with colored break-away tips.
- Kit designed to properly fit most OEM bars as well as after market handlebars/clip ons.

Color Options:



Billet Top Triple Clamp

- Aerospace grade 6061-T6.
- Anodized to further increase corrosion resistance and durability.
- Each piece is carefully inspected and laser etched with our logo and/or specs.
- Billet aluminum design greatly increases rigidity and front-end feedback.

Color Options: 



Captive Wheel Spacers

- Held in place by dust seal.
- Anodized for superior corrosion resistance.
- Ideal for racers/trackday enthusiasts.
- Never loose your wheel spacers again.

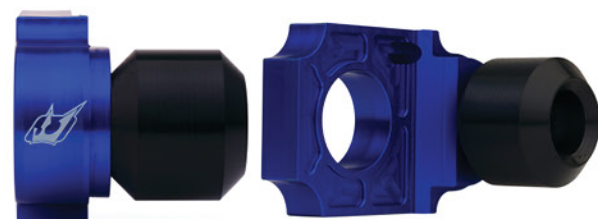
Color Options: 



Axleblock Sliders

- Constructed from aerospace grade 6061 T-6 billet aluminum.
- Ultimate strength and unmatched anodized color.
- Laser etched with precision equipment.
- Available for most modern sport bikes.

Color Options:    



Universal Toe Guard

- Machined from 6061 billet aluminum.
- Anodized for superior corrosion resistance.
- Super light, super strong and adds increased safety against serious injuries.

Color Options:     



Mirror Eliminators

- Anodized for superior corrosion resistance.
- Machined from billet 6061 aluminum.
- Designed to cover unsightly holes when mirrors are removed.

Color Options:     



D-AXIS Stand Spools

- Machined from 6061 billet aluminum.
- Anodized for superior corrosion resistance.
- Three piece design
- Laser etched with size and company Logo

Color Options:     



Shark Guard "Ducati Panigale" 1199

- Machined from 6061 billet aluminum.
- Anodized for superior corrosion resistance.

Color Options:     



Drilled Oil Filler Cap

- 6061 T6 Aluminum.
- Predrilled holes for safety wire.
- Removal requires a allen wrench or socket depending on model.

Color Options:     



Block Off Plates

- Fresh air injected into the exhaust system on modified sportbikes can cause backfires in the headpipes and muffler due to unburnt fuel from modified fuel mapping combined with additional oxygen spontaneously combusting in a high heat environment.

Color Options: 



PreLoad Adjusters

- Machined from 6061 alloy and designed to make on the fly suspension adjustments easy without tools.

Color Options:     



DRIVEN MANTIS

MANTIS IR SENSOR TECHNOLOGY

- The Mantis Infrared Temperature Sensor by DRIVEN Racing. The Mantis non-contact infrared sensor utilizes a 17 bit analog to digital converter and a powerful digital signal processing unit. With a resolution of 0.02°C, the Mantis sensor is a highly precise measuring instrument.
- A proprietary lens serves to create a wide-angle field of view for the sensor to observe infrared radiation emitted from the tire's surface. Additionally, the lens protects the sensor from being damaged by road debris.
- Encapsulating the sensor's electronic component assembly is a durable injection-molded poly carbonate housing.
- The Mantis display unit houses a glare-free liquid crystal display and a processor capable of converting raw data from the thermal sensor into valuable human-readable information, in real time.
- Programmable alerts can be easily set, and are useful in alerting the rider when his/her tire temperatures exceed the desired range.



HALO FUEL CAPS

- All fuel caps are made from Aerospace Grade Alloy
- Lower surface area
- 30% weight reduction from the D-Axis Cap
- Self-contained venting system (no hose)
- Clean lines to match modern sport bikes
- Black mounting screws



Fuel Cap

- Custom look for your fuel tank.
- Fuel bases available in black only.
- Fuel caps sold separately so you can customize your color choice (including stainless steel).

Color Options: 

PREMIUM ACCESSORIES

Designed for those who understand it is always time to ride.

California Standard Mirror

- Convex glass.
- Billet aluminum designed specially for standard or "naked" bikes.

Color Options: 



GRAVITY Bar End Mirror

- Blue tinted convex glass .
- "Tear Drop" shape.
- Anodized 6061 billet aerospace grade aluminum.
- Adjusts infinitely to achieve the best viewing angle.

Bar End Color Options: 



D-AXIS Bar End Mirror

- D-AXIS and EST (Evo Spec) Technology.
- Full 180 degree adjustability.
- Anodized 6061 billet aerospace grade aluminum.
- 1.5mm convex glass (wider viewing area).

Color Options: 



HALO Bar End Mirror

- HALO Stainless Steel Signature Series.
- Blue tinted anti-glare mirror.
- Anodized 6061 billet aerospace grade aluminum.
- Adjusts infinitely to achieve the best viewing angle.

Bar End Color Options: 



Bar End Mirror Adapters

- Fits 7/8 handle bars.
- Anodized 6061 Billet Aerospace Grade Aluminum.
- Designed to allow easy installation of our bar end mirrors.

Color Options: 



Bar End Adapter Kit

- Bar end Adapter kit Made to fit our aluminum or carbon bars.
- Fitment range 14mm - 16mm id of bars.
- Comes with 4pcs per kit.

Color Options: 



Kawasaki Bar End Adapter Kit

- Bar end Adapter kit Made to fit Kawasaki.
- Comes with 2pcs per kit.

Color Options: 



Ducati Bar End Adapter Kit

- Bar end Adapter kit Made to fit Ducati.
- Comes with 2pcs per kit.

Color Options: 



YAMAHA FZ 09 Bar End Adapter Kit

- Bar end Adapter kit Made to fit Yamaha FZ 09 Models.
- Comes with 2pcs per kit.

Color Options: 



BMW Bar End Adapter Kit

- Bar end Adapter kit Made to fit BMW Models.
- Comes with 2pcs per kit.

Color Options: 



GRAVITY Bar End System

- Combined weight of .3 lbs.
- Advanced 3 piece design.
- Machined from billet 6061.
- All hardware concealed after installation.

Color Options:     



D-AXIS Bar End System

- 50% more weight to reduce vibration in the bars.
- Advanced two piece design.
- Machined from billet 6061.
- All hardware concealed after installation.

Color Options:     



Bar End Weights V1

- Designed to help reduce vibration & arm pump while adding a custom look to your bike.
- All hardware concealed after installation.

Color Options:     



Bar End Weights V2

- Designed to help reduce vibration & arm pump while adding a custom look to your bike.
- All hardware concealed after installation.

Color Options:     



Bar End Driven SS

- Designed to help reduce vibration & arm pump while adding a custom look to your bike.
- Features 6061 billet aluminum center section capped by stainless steel ends.
- 40% heavier than our standard bar ends.
- All hardware concealed after installation.

Color Options:     



HALO Stainless Steel Bar End System

- Mix of aluminum and turned stainless steel.
- This bar end will fit most bikes with hollow bars (other bike adapters sold separately).
- Machined from billet 6061 and stainless steel.
- All hardware concealed after installation.

Color Options:     



FLUID CONTAINER

Fluid Container (Left exit, 16cc)

- Anodized for superior corrosion resistance
- M8 aluminum barb is fitted to the container to allow quick connection to the master cylinder
- Machined from billet 6061

Color Options: 



Fluid Container (Left exit, 31cc)

- Anodized for superior corrosion resistance
- M8 aluminum barb is fitted to the container to allow quick connection to the master cylinder
- Machined from billet 6061

Color Options: 



Fluid Container (Right exit, 16cc)

- Anodized for superior corrosion resistance
- M8 aluminum barb is fitted to the container to allow quick connection to the master cylinder
- Machined from billet 6061

Color Options: 



Fluid Container (Right exit, 16cc)

- Anodized for superior corrosion resistance
- M8 aluminum barb is fitted to the container to allow quick connection to the master cylinder
- Machined from billet 6061

Color Options: 



HONDA GROM ACCESSORIES

Honda Grom MSX 125

- High grade hardware.
- Adjustable folding toe pegs.
- Standard/reverse shift, 4 different mounting positions up to 18mm up and 18mm back from "OEM" positon.
- Lightweight TT design.

Color Options: 



Valve Cover

- Manufactured using high grade 6061 aluminum.
- Designed to give your valves a clean billet look.
- Honda GROM only

Color Options:     



Oil Fill Cap w/ Dipstick

- Anodized for superior corrosion resistance
- Machined from billet 6061 aluminum
- Each cap features a dipstick
- Honda GROM only

Color Options:     



Engine Plug

- Machined from 6061 billet aluminum
- Anodized for superior corrosion resistance.
- Honda GROM only

Color Options:     



Endurance Cups

- For the Honda GROM, Yamaha R6/R1 and Honda CBR 600RR.
- Comes with (1) for Front Axle & (1) for Rear Axle.
- Fit onto axle making easy to pull out & for protection.
- Manufactured out of Aluminum.

Color Options:     



Countershaft Sprocket Cover

- High grade hardware.
- Machined from 6061 billet aluminum.
- Lightening holes.
- Honda GROM only

Color Options:     



Timing Cover

- Manufactured using high grade 6061 aluminum.
- Designed to give your cylinder head a clean billet look.
- Honda GROM only

Color Options:     



KAWASAKI Z125 ACCESSORIES

TT Rearsets

- High grade hardware.
- Adjustable folding toe pegs.
- Lightweight TT design.
- Z125 only

Color Options: 



Valve Cover

- Manufactured using high grade 6061 aluminum.
- Designed to give your valves a clean billet look.
- Z125 only

Color Options:     



Oil Fill Cap w/ Dipstick

- Anodized for superior corrosion resistance
- Machined from billet 6061 aluminum
- Each cap features a dipstick
- Z125 only

Color Options:     



Engine Plug

- Machined from 6061 billet aluminum
- Anodized for superior corrosion resistance.
- Z125 only

Color Options:     



Fender Eliminator

- High grade hardware.
- Machined from 6061 billet aluminum.
- Z125 only

Color Options: 



Countershaft Sprocket Cover

- High grade hardware.
- Machined from 6061 billet aluminum.
- Lightening holes.
- Z125 only

Color Options:     



Cam Cover

- Manufactured using high grade 6061 aluminum.
- Designed to give your cylinder head a clean billet look.
- Z125 only

Color Options:     



2017 YAMAHA R6 ACCESSORIES

TT Rearsets

- High grade hardware.
- Adjustable folding toe pegs.
- Standard/reverse shift.
- High grade hardware, adjustable folding toe pegs, standard/reverse shift, 4 different mounting positions up to 32mm up and 34mm back from "0" position.

Color Options: 



Turn Indicators



Halo Fuel Base & Cap



Oil Fill Plug

- Machined from 6061 billet aluminum
- Anodized for superior corrosion resistance.

Color Options: 



Endurance Cups

- Comes with (1) for Front Axle & (1) for Rear Axle.
- Fit onto axle making easy to pull out & for protection.
- Manufactured out of Aluminum.

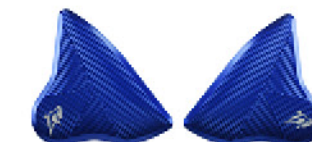
Color Options: 



Mirror Eliminator

- High grade hardware.
- Machined from 6061 billet aluminum.

Color Options: 



Axle Block Slider

- Manufactured using high grade 6061 aluminum.
- Designed to give your cylinder head a clean billet look.

Color Options: 





Color Options:

Bike Armor Motorbike Cover

- Designed to help keep your bike safe and protected from whatever mother nature may throw it's way.
- Featuring reinforced attachment points so you can securely lock the cover to your motorcycle and help deter theft, while a clip type buckle keeps the cover in place in windy conditions.
- The cover also features breathable areas to prevent moisture from accumulating once the cover has been installed.
- The right side of the cover contains a heat shield to protect itself from hot exhausts.
- Make no mistake, DRIVEN Bike Armor helps protect from harmful UV rays, wet weather conditions, and daily dust/moisture build up.

DRIVEN Chain Juice

- CHAIN LUBE 9 OZ.
- Synthetic chain lube



DRIVEN Chain Tool

- Everything you need to not only break your chain, but also to rivet your new one.
- All replacement parts are readily available should you need any
- Tool includes everything you need to break and rivet most 520/525/530 chains.



DRIVEN Chain Breaker

- Chain breaker 428-530 chains.



RK Chain Tool

- Quickly and easily breaks 40 & 50 type chain.
- Easily press-fits tight tolerance 40, 50 & 60 O-Ring chain sideplates to the correct depth for clip or rivet link installation.
- Flares RK's special pin hole rivet links to the proper dimension to secure sideplates in place.
- Works on most brands. Lifetime warranty on tool body & handle.



Threebond Griplock

- A high strength adhesive specially formulated to keep grips in place without damaging the rubber.



PADDOCK STAND

- Steel tubing construction
- Durable powder coating finish
- Quad wheel design
- Quick and easy come and go

Front Head Lift



GP Lifter Stand



Rear Stand



GP Style Lifters



Front Stand



LED

TURN INDICATORS



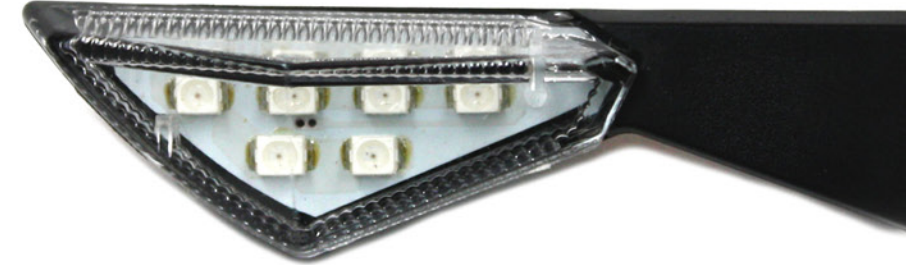
TURN INDICATORS

- Super bright LED
- Fits any M10 mount
- Available resistors
- Sold in pairs

DTI-AR



DTI-SH



DTI-BL



DTI-WE



DTI-DR



DTI-RE



DTI-FL



FENDER ELIMINATOR

Without Turn Indicators

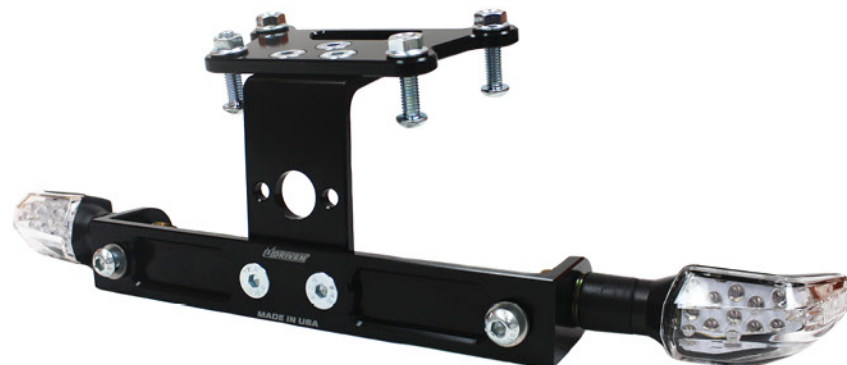


- All new from Driven Racing is the made from billet aluminum license plate relocation kits design to clean the rear end of your bike, and finish the custom look. These billet aluminum kits are light weight and strong machined out of 6061 billet to create a beautiful finished product.

- Kits are black anodized and laser etched with the Driven logo and using zinc plated hardware. All kits are designed to use the stock license plate light.

- These kits are sold with or without turn signals but will accept all turn signals with an 8mm or 10mm post. Kits are available for selected bikes. Check our application list to find your model.

With Turn Indicators



Universal Screw Kit

- 4 CNC machined, anodized, and precision etched washers.
- 4 zinc plated counter sunk M6 screws.



Color Options:





DRIVEN APPAREL



MANTIS T-SHIRT

- Look good on or off the track with a Mantis t-shirt.
- 100% pre-shrunk cotton

Color Options:  



MANTIS HOODIE

- Look good on or off the track with a Mantis hoodie.
- Draw String Hood, pouch pocket.

Color Options: 



CROWN T-SHIRT

- Look good on or off the track with a DRIVEN Crown Logo t-shirt.
- 100% pre-shrunk cotton

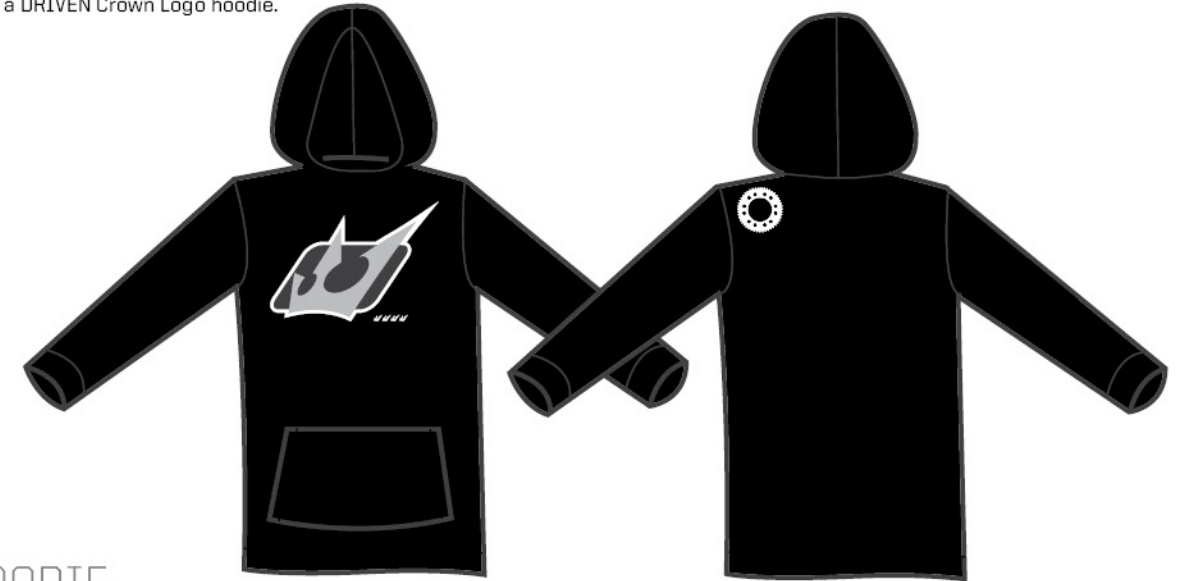
Color Options:  



CROWN HOODIE


- Look good on or off the track with a DRIVEN Crown Logo hoodie.
- Draw String Hood, pouch pocket.

Color Options: 



TT REARSET T-SHIRT

- Look good on or off the track with a DRIVEN TT Rerset t-shirt.
- 100% pre-shrunk cotton

Color Options:  



TT REARSET HOODIE

- Look good on or off the track with a DRIVEN TT Rerset hoodie.
- Draw String Hood, pouch pocket.

Color Options: 



DRIVEN Flexfit Hat

- Flexfit
- DRIVEN logo embroidered on the front left panel.

Color Options: 



DRIVEN Wristband/Reservoir Cover

- Driven wristband / reservoir cover.

Color Options:  



DRIVEN Visor Beanie

- 100% acrylic knit.
- One size fits all.
- Driven logo embroidered on the front left side.

Color Options:  



DRIVEN Rubber Patch


- Add a durable rubber DRIVEN patch to your race gear.

Color Options: 



DRIVEN Beanie

- 100% acrylic knit.
- One size fits all.
- Driven logo embroidered on the front left side.

Color Options:  



DRIVEN Backpack

- Hold your gear in this backpack with a Driven embroidered logo.
- Padded Shoulder Straps.
- Reinforced carrying handle.
- Cell phone holder.
- Back padding.
- Mesh side pockets for drinks.

Color Options:  



3D Premium Chain

- Rated up to 1400cc.
- Exclusive QX2 Ring which reduces friction.
- Lightweight plate design.
- Lightening holes on each side of pins.
- Made in Japan.



RK XSO

- Chain features RK's proprietary "RX-Ring" seal design.
- Viewed in cross-section, the RK "RX-Ring" has two lubrication pools and seal points versus the single seal point/pool design of a regular O-Ring chain.
- RK's new GBXSO chains offer quality, performance and unbeatable value, for all but the most demanding high performance application.



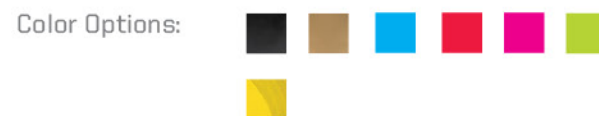
RK Max X

- Chain features RK's proprietary "RX-Ring" seal design.
- Available in different sizes: 520, 525, and 530
- Up to 170 links for extended swingarms



RK 520GXW

- Chain features RK's proprietary "RX-Ring" seal design.
- Viewed in cross-section, the RK "RX-Ring" has two lubrication pools and seal points versus the single seal point/pool design of a regular O-Ring chain.
- RK's new GBXSO chains offer quality, performance and unbeatable value, for all but the most demanding high performance application.



RK ZXW

- Ideal for high-speed, high-horsepower performance applications
- Strongest, longest-lasting premium quality XW-ring



RK Max Z

- Chain features RK's proprietary "RX-Ring" seal design.
- Available in different sizes: 520, 525, and 530
- Up to 160 links for extended swingarms



Distributed Products

REPLACEMENT PARTS

100078 Bearing



100102 Captive Nut & Bolt



DRP-011LH



DRP-011RH



DRP-007-GPU Foot Peg



M6 Male Heim Joint Right/Left Hand Thread



M6 Female Heim Joint Right Hand Thread



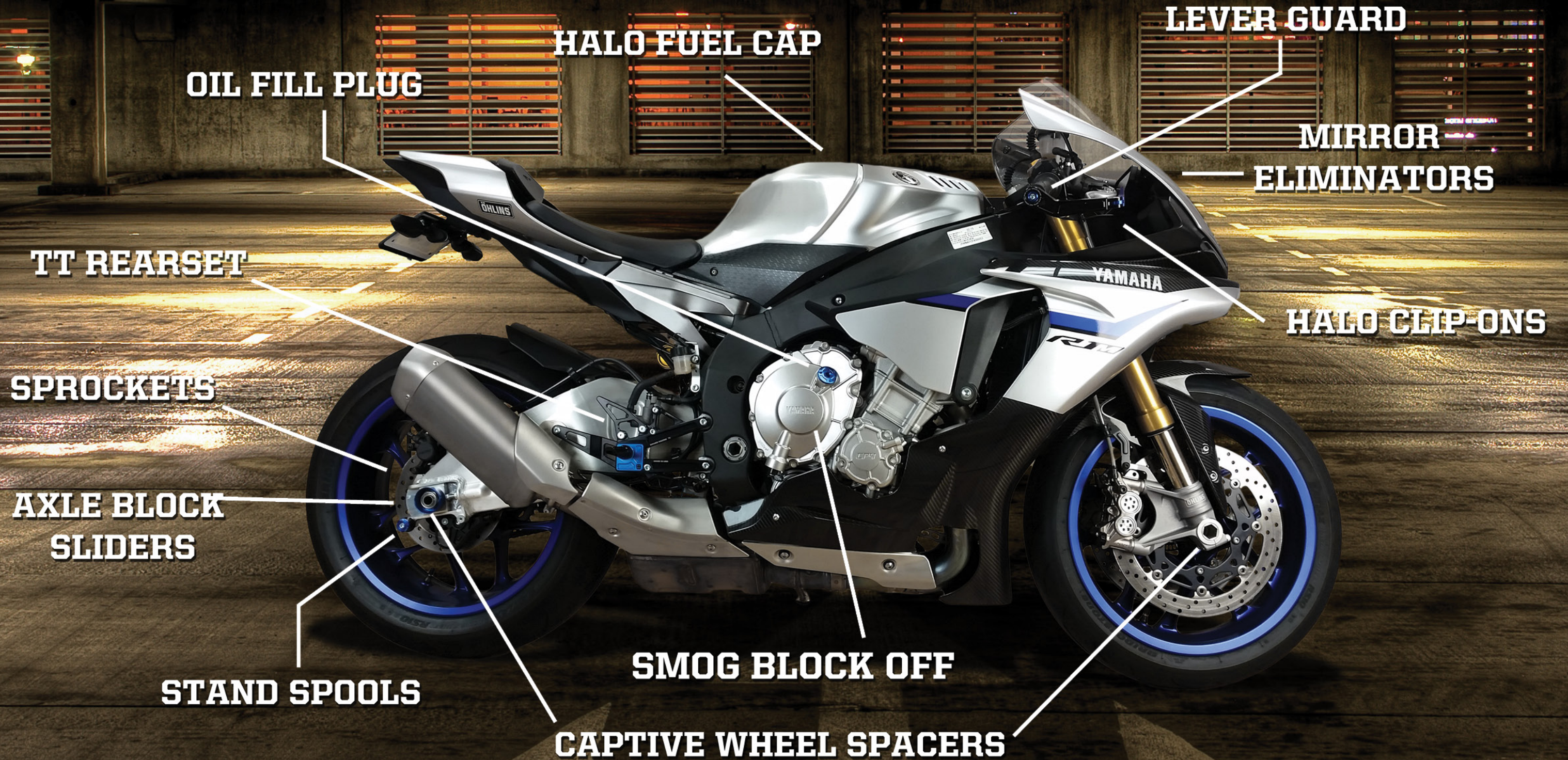
Shift Rod 3"-9"



2015 BMW S1000RR



2015 YAMAHA R1/M



OIL FILL PLUG

HALO FUEL CAP

LEVER GUARD

MIRROR
ELIMINATORS

TT REARSET

HALO CLIP-ONS

SPROCKETS

AXLE BLOCK
SLIDERS

STAND SPOOLS

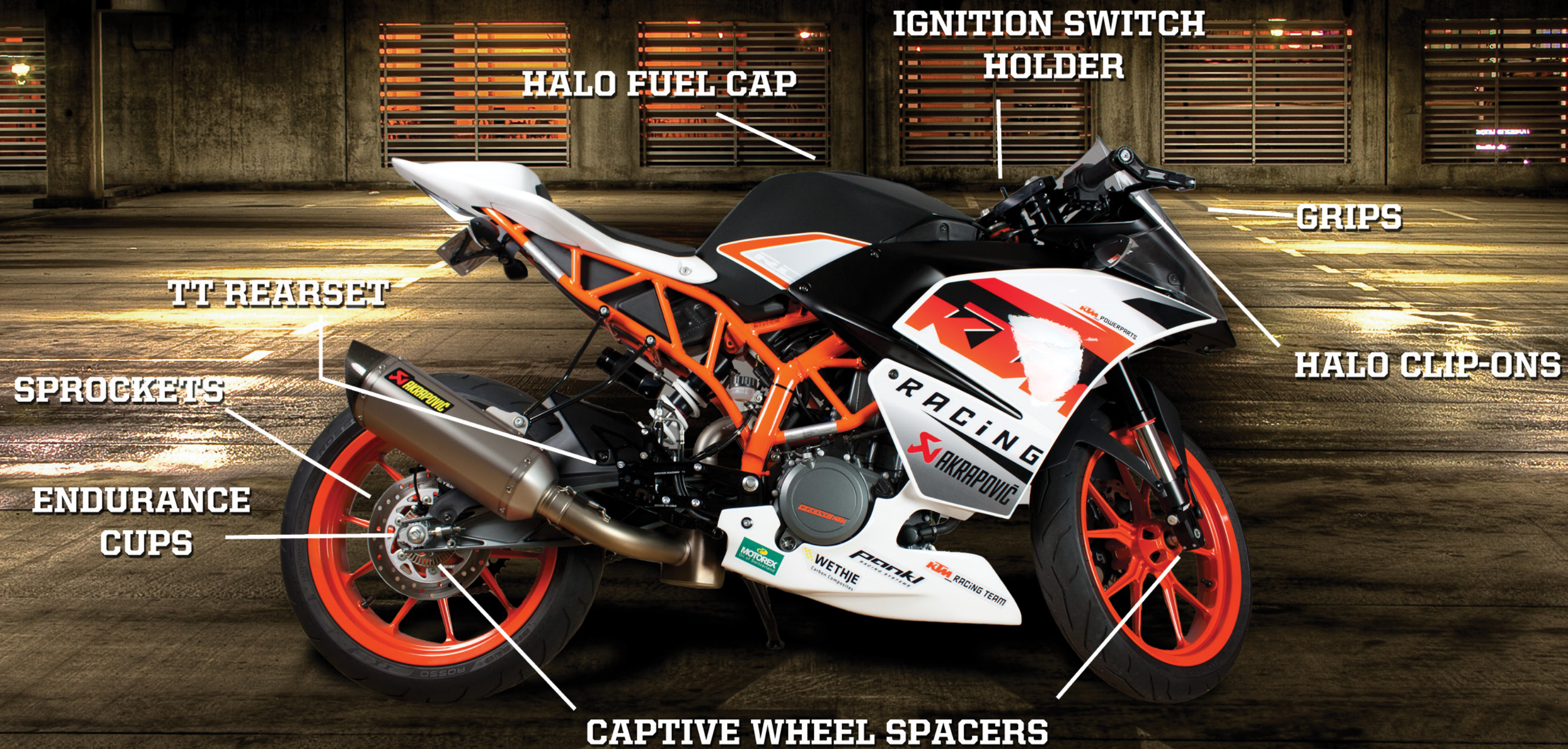
SMOG BLOCK OFF

CAPTIVE WHEEL SPACERS

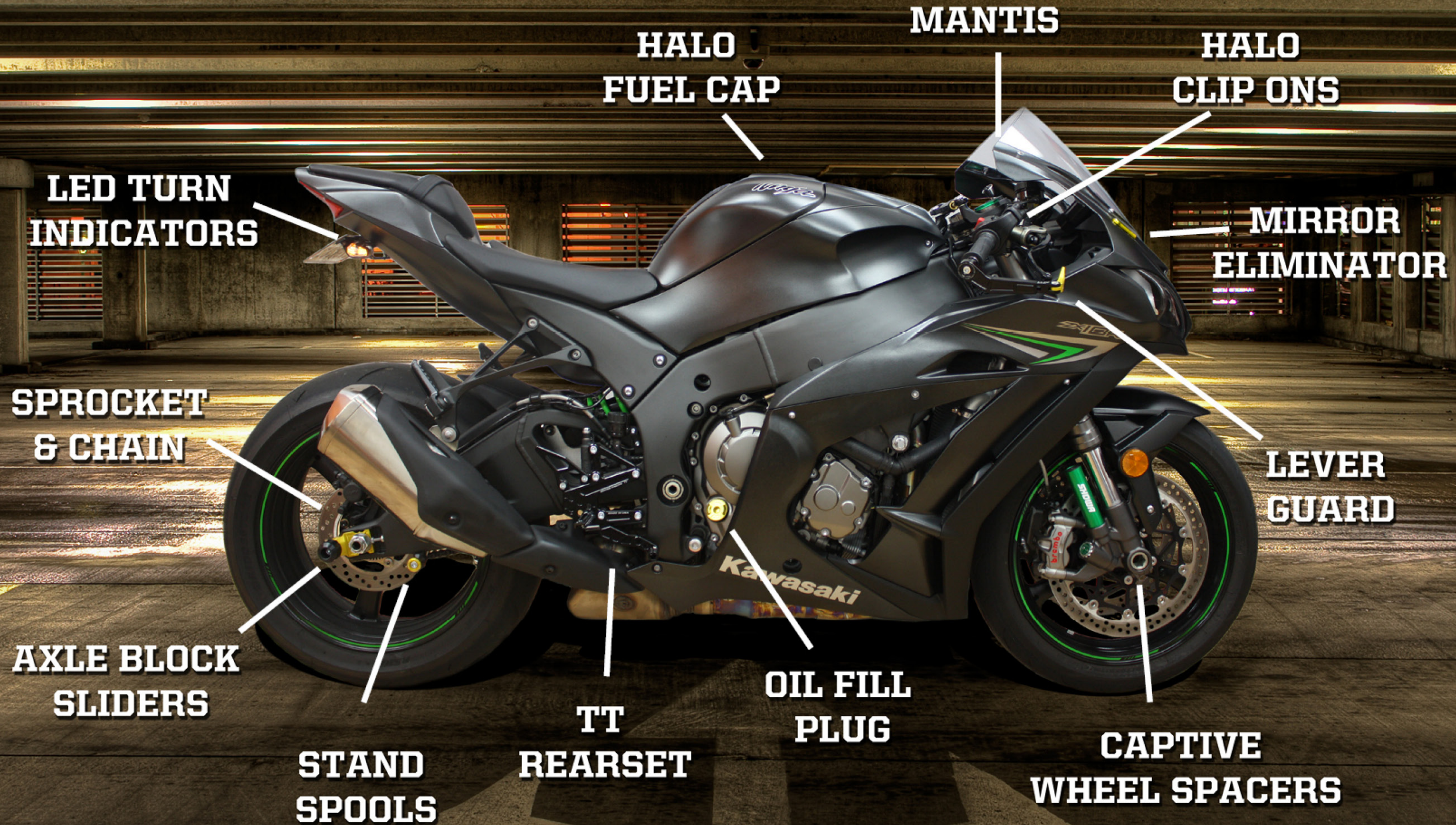
2015 YAMAHA FZ-07



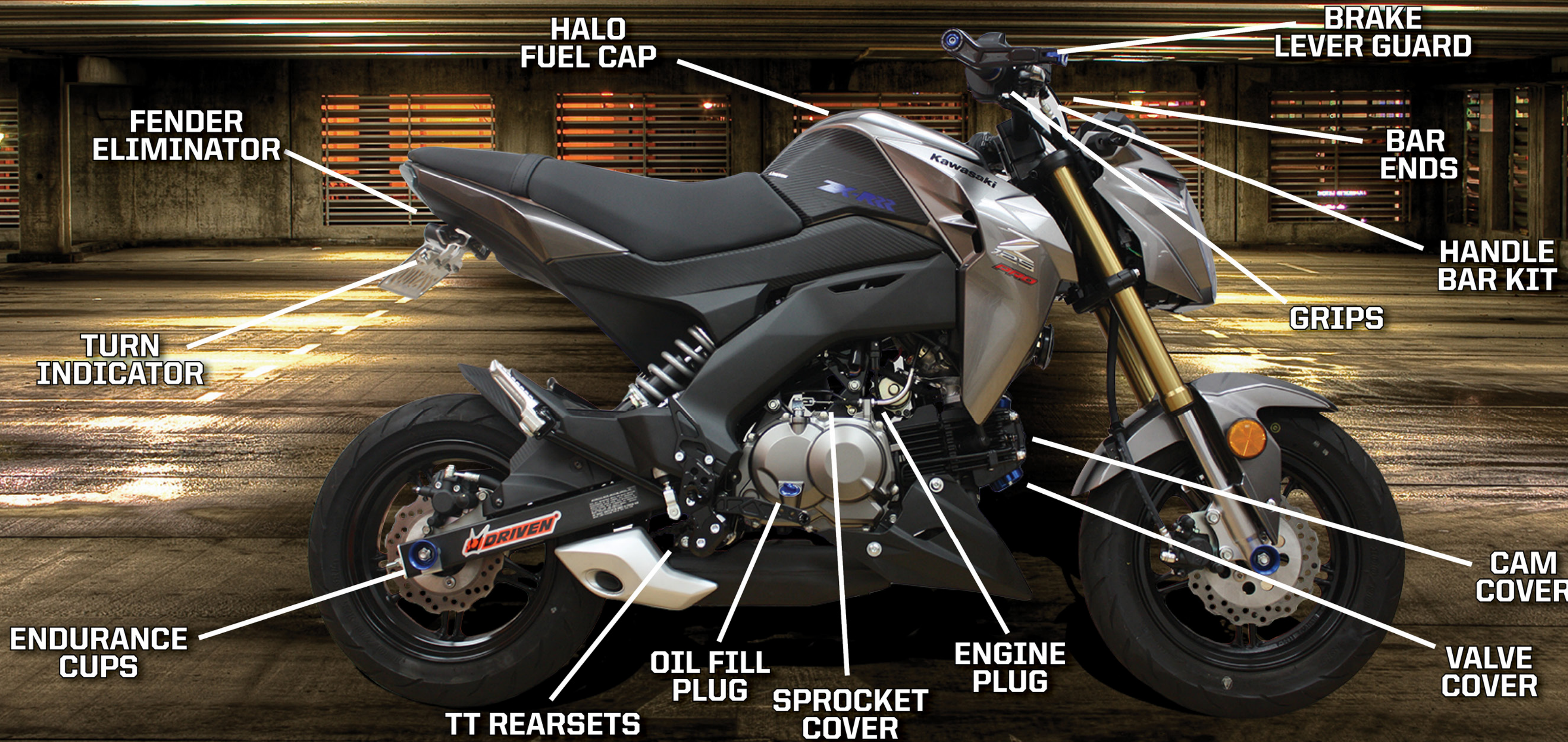
2015 KTM RC 390



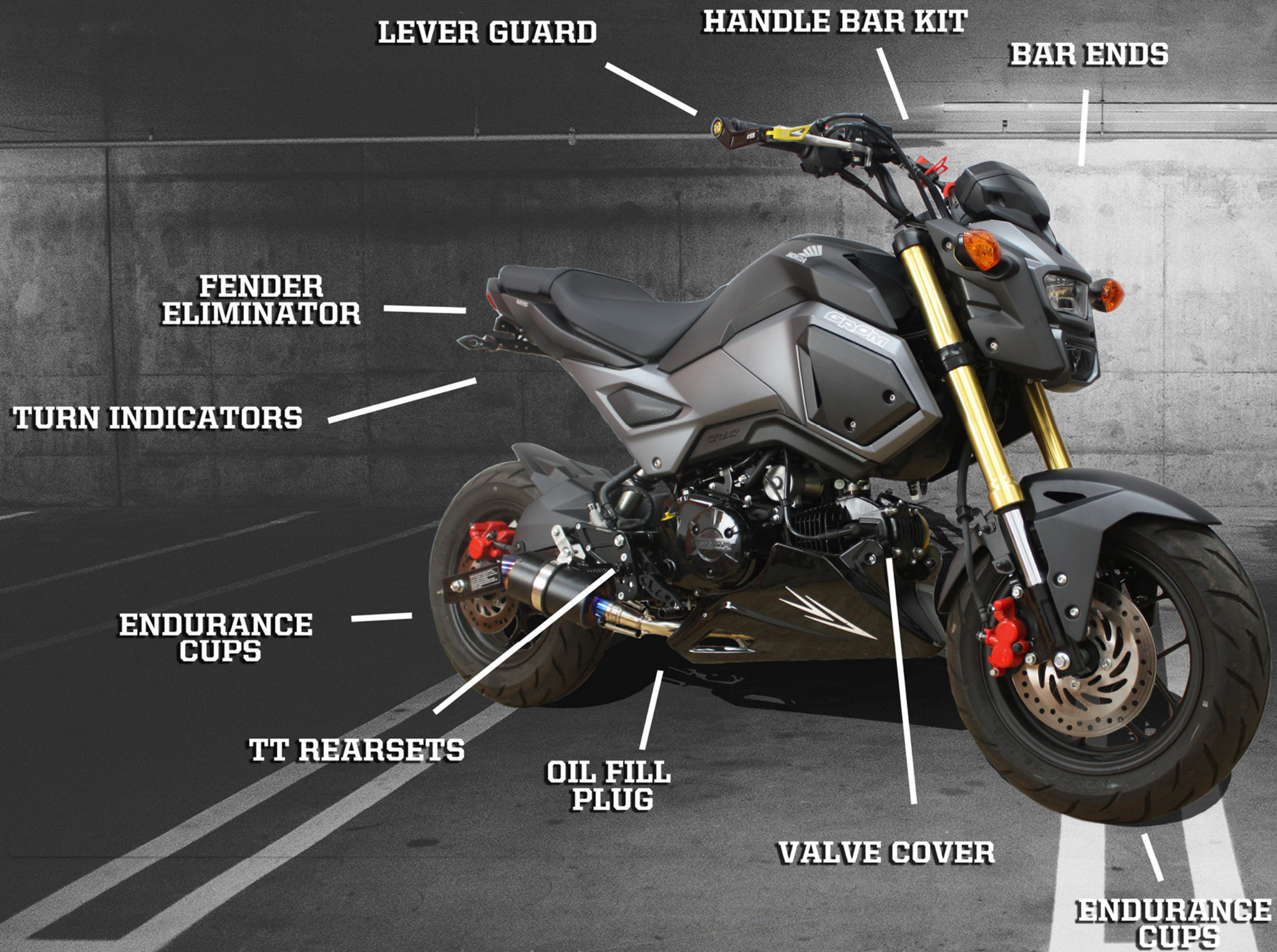
2016 KAWASAKI NINJA ZX-10R



2016 KAWASAKI Z125



2017 HONDA GROM SF



2017 YAMAHA R6

HALO FUEL CAP
& BASE

LEVER GUARD

MIRROR
ELIMINATOR

HALO
CLIP-ONS

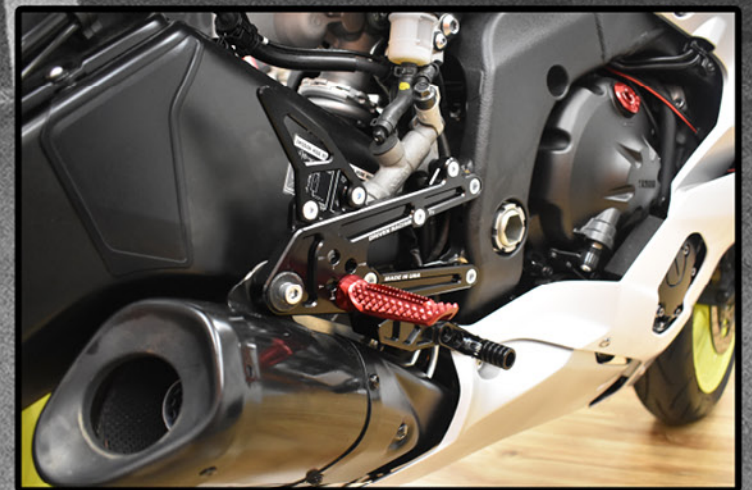
FENDER
ELIMINATOR



FENDER ELIMINATOR



AXLE BLOCK SLIDERS
& GP STYLE LIFTERS



TT REARSETS

CAPTIVE WHEEL
SPACERS

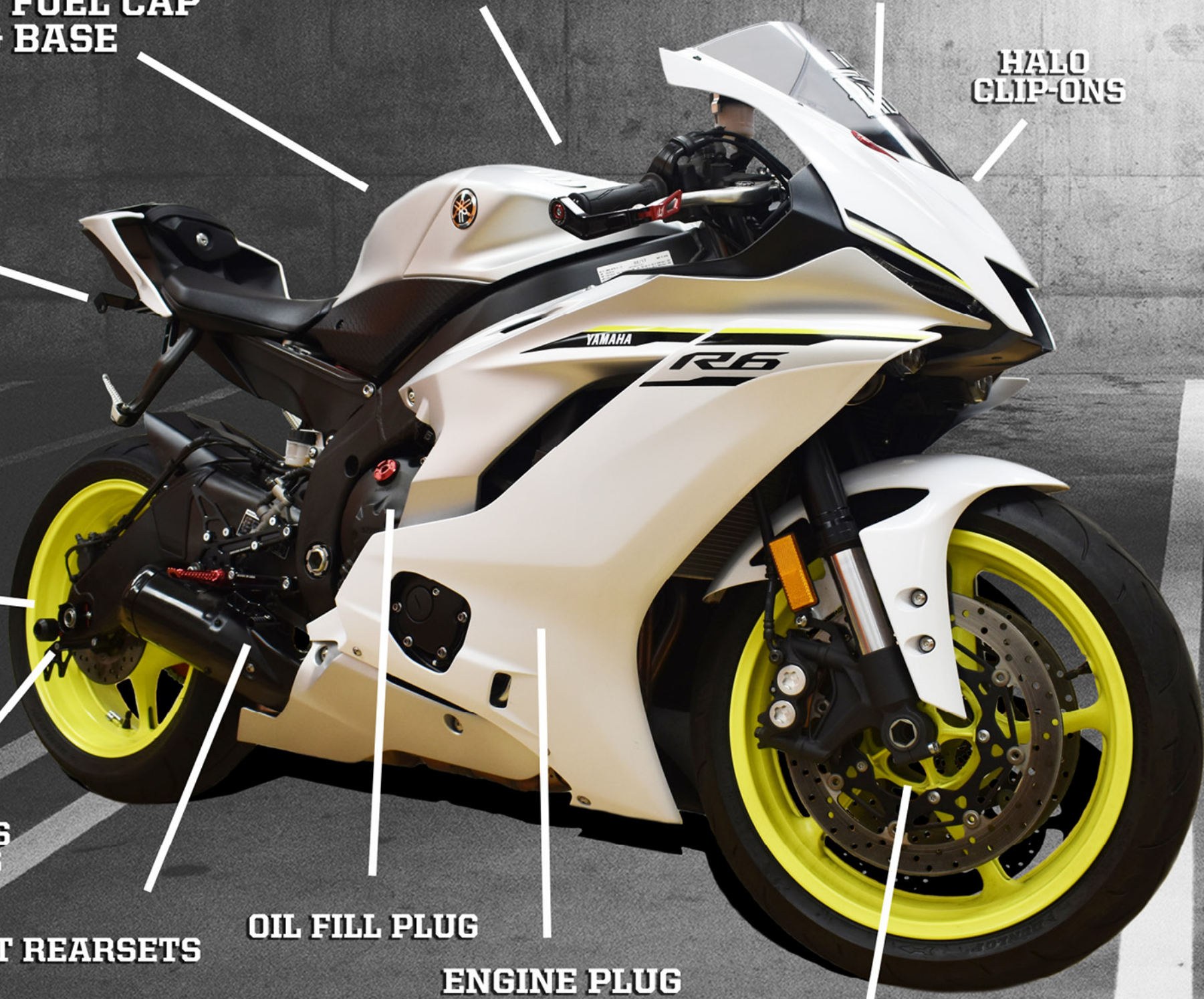
AXLE BLOCK SLIDERS
& GP STYLE LIFTERS

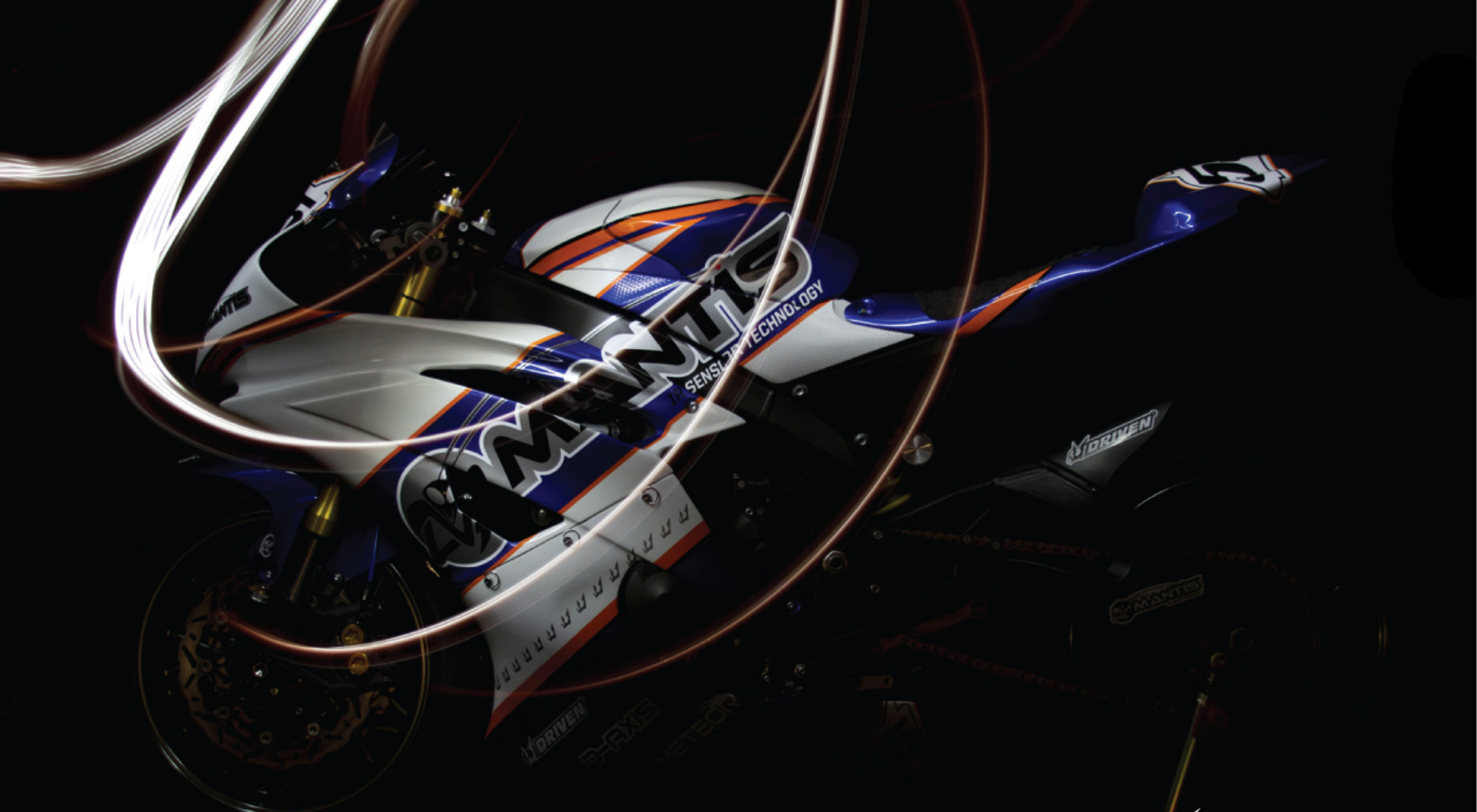
TT REARSETS

OIL FILL PLUG

ENGINE PLUG

ENDURANCE
CUPS





©2017 DRIVEN USA, All Right Reserved. The trademarked name and pictures are for reference purposes only. Some specifications may change without notice. Always wear a helmet and other appropriate safety equipment.

Catalog, Graphics and Photos by DRIVEN USA



Learn more about motorcycle brake parts on our website.