

DVB
OFF-ROAD



DVB™
OFF-ROAD

2019

ACCESSORIES
CATALOG



2019

TRAIL GEAR

3	JL NEW PRODUCT LINE	23	LIGHTS
5	JL BUMPERS	25	JK ROCK SLIDERS
7	JL TIRE CARRIERS	26	WINCHES
9	JL ROCK SLIDERS	27	TOPS
10	JL DOORS	29	JK FENDERS
11	JL FENDERS	31	JK GRILLS/HOODS/DOORS/MOUNTS
12	JL INNER FENDERS	33	JK TIRE CARRIERS
13	JL MOUNTS	34	SUSPENSION
14	JL ARMOR	37	WHEELS
15	JL TAILGATE	41	TRUCK BUMPERS
16	JL FASTBACK TOP	45	CHEVROLET
17	JK PRODUCT LINE	47	DODGE
19	JK FRONT BUMPERS	49	FORD
21	JK REAR BUMPERS	52	TOYOTA

WHY CHOOSE US?

Born in Southern California, DV8 Off Road understands Jeeps and the importance of creating a product that stands the test of time on and off the trail. We build durable and long lasting parts that compliment the natural lines of a Jeep. We also understand that along with style, Jeep enthusiasts need functional and reliable equipment that protects their investment. This is why we test all of our products on our Jeeps before releasing them to the public. These vehicles are used as daily drivers and trail vehicles. Our staff enjoys taking the DV8 Jeeps to their limits on some of the most extreme trails in the country. This is to ensure that we are providing high quality accessories that are just as amazing as the Jeeps themselves.

OUR TEAM

Our team is made up of men and women who embody the Jeep lifestyle. They are outgoing, active and willing to DV8 from the beaten path. This passion goes towards creating and delivering the best products available to the off road community. Because of this, we are proud to stand behind all of our products. For DV8 Off Road, having a jeep is not just a way to get around, it's an expression of who you are.



DV8[™]
OFF-ROAD

2019 JL

PRODUCT LINE



A RBJL-01
Rear Bumper

B TCJL-01
Tire Carrier

C FDJL-01
Rear Fenders

D INFEND-03RB
Rear Inner Fenders

E SRJL-01
Rock Sliders

F LBJL-01
Light Bar Bracket

G INFEND-03FB
Front Inner Fenders

H FDJL-01
Front Fenders

I FRONT BUMPERS
See chart for JL
compatible bumpers

J SPJL-01
Skid Plate

K RRBS2-01
Bump Stops

L DV8-882
Beadlock Wheels

FRONT BUMPERS

FBJL-01



Stubby Front Bumper w/Bull Bar

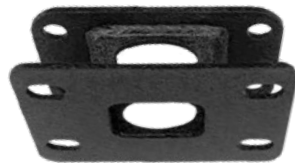
The FBJL-01 features a high clearance design and incorporates a protected 20" slim LED light bar for increased visibility. The bumper is rated for, up to, a 12,500 lbs winch. This bumper is designed specifically for the Jeep JL and requires no drilling to install.

- High clearance design - aggressive angles and styling
- Incorporates a 20" LED light bar
- Reinforced bull bar

*Dim: w55" x h15" x d1"
*Weight: 70lbs

FRONT BUMPER ADAPTER

ABJL-01



JL to JK Front Bumper Adapter Bracket

- JK to JL adapter bracket allows for the use of any DV8 JK 2007-2017 front bumpers on 2018+ Jeep JL
- Brackets are made of 3/16" cold rolled steel and powder coated textured black
- Comes with Grade 8 hardware
- Maintains winch capability
- Patent pending

*Dim: w8" x h5.5" x d5.5"
*Weight: 8lbs

2018 Jeep Wrangler Product Line

Current JK products that are compatible w/2018+ JL Jeep Wrangler

PRODUCT	PART NO.	DESCRIPTION
FS-1	FBSHTB-01	Full Length Front Bumper
FS-6	FBSHTB-06	Mid Front Bumper
FS-7	FBSHTB-07	Mid Front Bumper w/LED Lights
FS-8	FBSHTB-08	Mid Front Bumper w/LED Lights
FS-11	FBSHTB-11	Mid Front Bumper 11 w/ LED Lights
FS-13	FBSHTB-13	Stubby Front Bumper w/Fog Lights
FS-14	FBSHTB-14	Mid Front Bumper w/Fog Lights & LED
FS-15	FBSHTB-15	Stubby Front Bumper w/Fog Lights
FS-24	FBSHTB-24	Stubby Front Bumper w/Light bracket & winch plate
FS-25	FBSHTB-25	Stubby Front Bumper w/20" Light Bar & winch plate (Light Bar not included)
Hydraulic Bump Stops	RRBS2-01	Threaded Body 2.0 Bump Stop with 2.5" Stroke

RBJL-01



REAR BUMPERS | Fit all 2018+ JL models

Full Length Rear Bumper

- Made from 3/16 cold rolled steel and highly UV resistant dual layer powder coat that resists rust.
- Accommodates backup sensors, factory hitch, 2 integrated LED lights, and license plate mount. D-rings included
- Compatible with TCJL-06 tire carrier
- Full wrap around design

*Dim: w74" x h19" x d11"
*Weight: 86lbs

RBJL-02



Full Length High Clearance Rear Bumper

- High clearance design with aggressive angles and styling
- Accommodates up to a 42" tire with optional tire carrier
- End caps are removable but rigid (bolting up to body mounts)
- Compatible with TCJL-03 tire carrier
- Accommodates backup sensors

*Dim: w69" x h19" x d11"
*Weight: 91.5lbs

RBJL-03

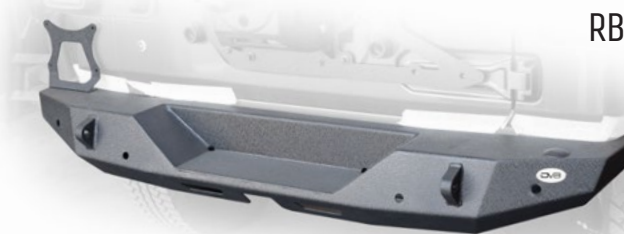


Full Length High Clearance Rear Bumper

- Aggressive angles and styling
- High clearance design and 2 recovery shackle attachments
- Incorporates 2 integrated LED Backup Lights
- Accommodates backup sensors and license plate mount

*Dim: w74" x h16" x d10"
*Weight: 48lbs

RBJL-06



Mid Length Rear Bumper

- High clearance design with aggressive angles and styling
- License plate mounting system with light
- Accommodates backup sensors
- Full wrap around design

*Dim: w67" x h15" x d10"
*Weight: 60lbs

RBJL-07



Mid Length High Clearance Rear Bumper

- High clearance design with aggressive angles and styling
- License plate mounting system with light
- Light weight, Accommodates backup sensors

*Dim: w68" x h14" x d10"
*Weight: 48lbs

* Product dimensions and weights are approximate

TCJL-01



Tire Carrier

- DV8 Adjustable Tire Carrier allows for mounting up to a 35 inch tire to the factory tailgate
- This tire carrier allows for the utilization of the JL's reinforced tailgate.
- Made from 3/16" cold rolled steel. Accommodates factory 3rd brake light assembly
- Remounts factory back up camera in a stout steel housing.

*Dim: w31" x h16" x d8"
*Weight: 32lbs



TCJL-02



Body Mounted Tire Carrier

TCJL-02 uses a combination of tubing, boxed steel and internal bracing to accommodate up to a 42" tire and wheel combo. This carrier can be used with any rear bumper.

- Accommodates up to a 42" tire
- Fits any bolt pattern wheel
- Spring loaded pin system to make opening and closing the tire carrier easy
- Rigid mounting system
- Internal bracing
- DV8 textured powdercoat
- Accommodates the OEM back-up camera

*Dim: w52" x h30" x d17"
*Weight: 89lbs

TCJL-06



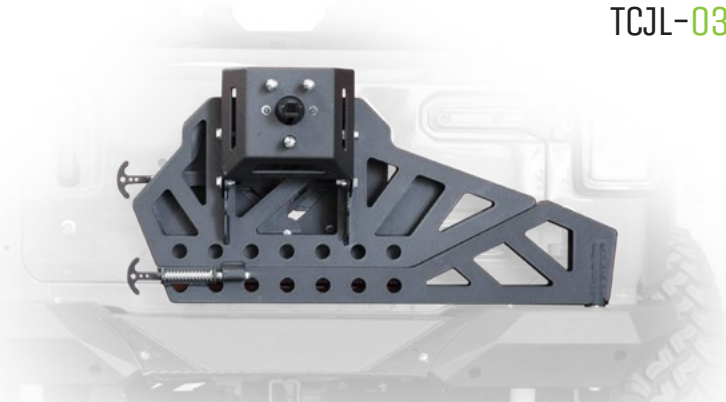
Bumper Mounted Tire Carrier

TCJL-06 is a bumper mounted tire carrier that can be added to the RBJL-01 or RBJL-06. The carrier attaches to the tailgate of the JL and operates just like the factory spare tire carrier but with the added support of being mounted to the frame.

- Replaces weak link on OEM spare tire mounting system
- Accommodates up to a 37" tire and wheel combo
- Retains easy access to rear of the Jeep
- Allows for adjustability of how high the spare is mounted
- Retains OEM taillight
- Accommodates the factory backup camera

*Dim: w40" x h9" x d21"
*Weight: 76lbs

TCJL-03



Frame Mounted Tire Carrier Patent Pending

- Designed with aggressive angles and styling
- Tire carrier pivots with one pin pull to easily drop the spare
- Tire carrier hooks to rear tailgate and easily unpins
- Accommodates up to a 42" tire
- Only compatible with RBJL-02
- Tire carrier mounts directly to the frame
- Accommodates backup sensors and backup camera

*Dim: w69" x h19" x d11"
*Weight: 91.5lbs



TCJL-07



Interior Tire Carrier with Rotopax Mounts

Patent Pending

Interior tire carrier features a hydraulic lifting mechanism to move the spare out of the way for storage. The TCJL-07 works great with the JL tailgate replacement and bolts to the factory cage and floor panels.

- Accommodates up to a 40" tire
- Space to mount 2 rotopax
- Moves the spare inside the Jeep for hardcore offroading
- Increases departure angle clearances
- Moves the heavy spare assembly to a better balance point.

*Dim: n/a
*Weight: n/a



* Product dimensions and weights are approximate



SRJL-01

Boatside Rock Sliders (4 Door Only) Patent Pending

- Built extremely tough and designed to take a beating so you can keep moving forward with confidence
- Protection extends down to the frame rails
- Boat side design prevents hang ups
- Removable plates for replacement/recoating
- 100% bolt on
- Boxed supports - extreme protection

*Dim: w77" x h8.5" x d21"
*Weight: 80lbs



SRJL-02

Tubular Side Step/Slider (4 Door Only)

SRJL-02 sliders are a trail tested and proven design. Made from .160 wall 2" rolled steel tubing and completely bolt on, no drilling required.

- High Clearance
- Slider/ Step without losing clearance
- Gripping Design
- Easy Install - Steps utilize factory hardware

*Dim: w75" x h12" x d7"
*Weight: 65lbs



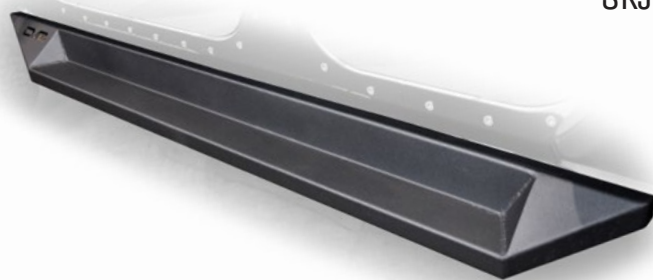
SRJL-03

Tubular Rock Slider with Plated End Caps (4 Door Only) Patent Pending

SRJL-03 sliders are a trail tested and proven design. Made from .160 wall 2" rolled steel tubing and completely bolt on, no drilling required.

- High Clearance
- Minimal Loss of Clearance
- Plated Ends
- Easy Install - Sliders utilize factory hardware

*Dim: w74" x h14" x d11"
*Weight: 60lbs



SRJL-04

Plated Side Step/Slider (4 Door Only)

SRJL-04 step sliders use a boxed in plated design that provides a rigid rock slider. The step will make struggling to get into your lifted JL a thing of the past all while improving the looks and functionality of the Jeep.

- Easy installation
- No modifications needed
- Easy Install - Steps utilize factory hardware

*Dim: w72" x h9" x d12"
*Weight: 55lbs



SRJL-06

Rock Sliders Patent Pending

The most vulnerable areas on the body are the rocker panels. Sliders protect your rocker panel area while enabling you to slide over rocks and obstacles.

- Sliders use body mounts and rock skins for ultimate durability
- Attach with factory hardware and nutserts
- Great for Jeeps that will be used in extreme conditions regularly

*Dim: n/a
*Weight: n/a



SRJL-05

Rock Skins (4 Door Only)

SRJL-05 Rock Skins can be used with any JL step or slider and contour around either factory or aftermarket fenders. They are designed to add protection to the exposed body between the door and the bottom of the body.

- Made with 3/16" steel
- Attach securely using nutserts

*Dim: n/a
*Weight: 18lbs



RDJL-01

Rock Doors

- Come with perforated aluminum screens
- Screens can be painted to match Jeep
- Dimple Dye holes for lightweight durability
- Doorless visibility with added protection
- Limit straps to prevent door from swinging too far open
- Rattle preventing stopper integrated into the design
- Available for 2 door or 4 door
- Come with replacement mirrors

*Dim: n/a
*Weight: n/a



HDJL-01

Half Doors

- Come with perforated aluminum screens
- Screens can be painted to match Jeep
- OEM styling
- Doorless visibility with added protection
- Available for 2 door or 4 door
- Come with replacement mirrors

*Dim: n/a
*Weight: n/a

* Product dimensions and weights are approximate



FDJL-01

High Clearance Armor Fenders *Patent Pending*

- Slim Design for max protection and clearance
- Aluminum vents can be color keyed to the Jeep
- 100% bolt on and require no cutting or drilling
- Integrated LED turn signals
- light weight and built tough



FDJL-02

High Clearance Slim Fenders *Patent Pending*

- Slim Design for max protection and clearance
- 100% bolt on and require no cutting or drilling
- Integrated LED turn signals
- light weight and built tough
- Fender width: 7" front | 4.75" rear



FDJL-04

High Clearance Full Flat Fenders *Patent Pending*

FDJL-04 Flat Fenders were designed to improve tire clearance and keep everything completely street legal when running oversize tires. The fenders are 12.75 inches wide in the front and 8.75 inches wide in the rear.

- Wide Design for max protection and clearance
- 100% bolt on and require no cutting or drilling
- Integrated LED turn signals
- light weight and built tough

*Dim: w55" x h16" x d25"
*Weight: 70lbs



INFEND-03FR

Front Inner Fenders *Patent Pending*

- Reseals the engine compartment to protect from mud, dust, and debris
- Better airflow to keep your engine compartment cooler
- Mounts with the factory fenders and most aftermarket fenders

- Available in raw aluminum or black powder coating.

Also available in Black **INFEND-03FB**

*Dim: w30.75" x h30.75" x d10"
*Weight: 9.3lbs



INFEND-03RR

Rear Inner Fenders *Patent Pending*

- Protects components while not reducing tire clearance
- Mounts with the factory fenders and most aftermarket fenders

- Available in raw aluminum or black powder coating.

Also available in Black **INFEND-03RB**

*Dim: w41.5" x h23.5" x d10.25"
*Weight: 10.2lbs

* Product dimensions and weights are approximate



LBJL-01

Over Windshield Light Bar Bracket

- Secure mounting of a 50" LED light bar over the windshield of the JL
- Light weight and strong
- Space for wiring is provided
- Patent pending

*Dim: w35" x h11" x d7"
*Weight: 20lbs



LBJL-02

Dual Pod Light Lower A Pillar Mount

- Securely mount 4 led pod lights on the JL (DV8 P/N: B3CE16W4W)
- Easy Bolt on install
- Come powder coated DV8 textured black
- Mount using factory hardware

*Dim: n/a
*Weight: n/a



LBJL-03

Over Hood 30" Light Bar Mount

- Securely mount a 30" LED light bar (DV8 P/N: BS30 BS30E150W5W)
- Gusseted design for sturdy mounting
- Come powder coated DV8 textured black
- Won't effect hood opening and closing
- Easy to wire
- Mount using factory hardware

*Dim: n/a
*Weight: n/a



TLJL-01

Tail Light Guard

- Easy to install tail light guards
- Protect tail light from damage on the trail
- No drilling or modification of the light housing required

Note: Only work on non sensor tail lights

*Dim: n/a
*Weight: n/a



SPJL-01

Swaybar Disconnect Skid Plate

- Protects the exposed sway bar disconnect and factory crash bar.
- Cleans up the aesthetics when installing an aftermarket bumper.
- Works with most DV8 Offroad front bumpers for JL Jeep Wranglers.

*Dim: w37" x h13" x d9"
*Weight: 30lbs



SPJL-02

Skid Plate

- Bolt on protection for your Jeep JL
- Protects the most vulnerable area of the undercarriage

- No drilling required
- Made of 3/16" steel
- Comes powdercoated

*Dim: n/a
*Weight: n/a

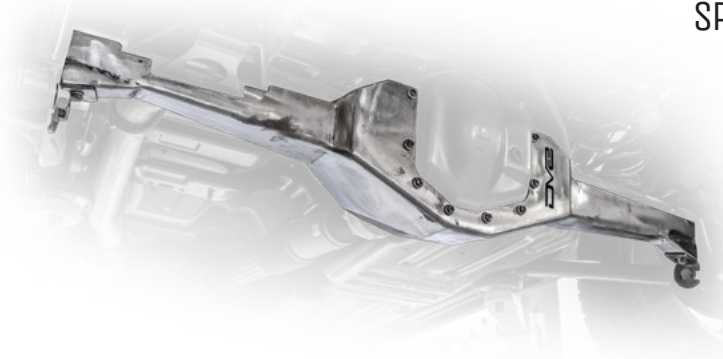


SPJL-03

Front Differential Skid Plate

- Bolt on front axle differential protection
- Protects the lowest hanging part of the axle
- Designed to deflect rock hits
- Comes powdercoated with DV8 textured finish
- Minimal clearance loss
- Protects vital components of the differential

*Dim: n/a
*Weight: n/a



SPJL-04

Rear Differential Skid Plate

- Bolt on rear axle protection
- Protects differential and axle tubes
- Full protection for your rear axle
- Designed to deflect rock hits
- Minimal clearance loss
- Comes powdercoated with DV8 textured finish
- Protects the axle yoke from rock hits
- Utilizes factory shock mounts

*Dim: n/a
*Weight: n/a

TGJL-01

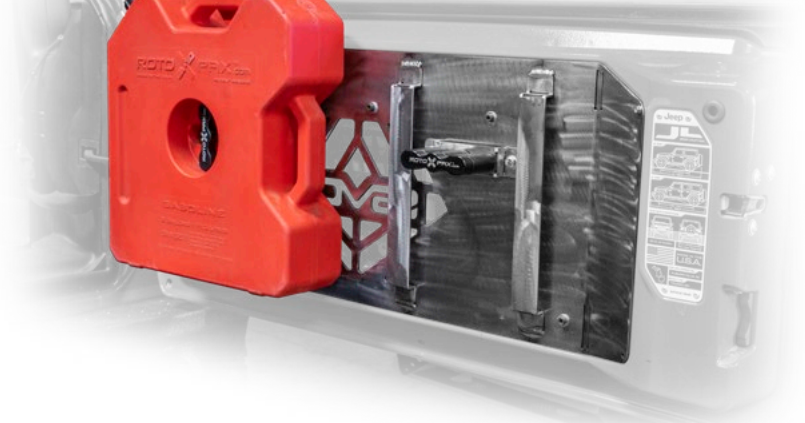


Steel Open Air Tailgate

- Full tailgate replacement
- Works well with the TCJL-07
- Great for weight reduction and topless runs
- Allows for the TCJL-07 to fit a 40" tire
- Comes with tailgate hinge replacements

*Dim: n/a
*Weight: n/a

TGJL-02



Tailgate Rotopax Mount

- Bolts to the factory tailgate
- Designed to hold 2 rotopax (not included)
- Great for carrying fuel or water
- Can be used for fuel if the top is off
- Secure mounting system

*Dim: n/a
*Weight: n/a

JLTS-01



Spare Tire Delete Kit

The JLTS-01 fits over the raised vent area in the center of the tailgate. These are very useful for those who have deleted or relocated the spare tire. CNC-laser cut from 3/16" steel, the plate comes powder coated in a textured black finish with a license plate light and installs easily using factory hardware. Installing the tramp stamp requires removal of the stock air vent flaps so that it may sit flat against the tailgate for a proper fitment.

*Dim: w14" x h2" x d18.5"
*Weight: 9lbs

HTJLFB

Fast Back Hard Top

DV8 Off Road Hard Tops are built in the United States and use high quality seals, fiberglass, and advanced aerodynamics to produce the quietest tops on the market.

- Hand laid honeycomb reinforced fiberglass for added durability
- 31% tint DOT approved glass
- Military grade carpeted headliner for increased insulation and noise reduction
- UV stable GEL coat - Extra thick
- Quick release latching system
- Improved aerodynamic shape, One piece targa design
- Defrost rear windows



*Dim: n/a
*Weight: 140lbs



DV8[™]
OFF-ROAD

2007-17

JK PRODUCT
LINE

Bumpers

LED Lights

Rock Sliders

Winches

Hard Tops

Fenders

Inner Fenders

Armor Fenders

Grills & Doors

Hoods

Mounts

Wheels

Truck Conversion

Tire Carriers

Suspension

- A** BS-20
20" Slim LED
Light Bar
- B** HL-1
LED Projector
Headlight
- C** BC-3
Cube LED light
- D** WB-12SR
12,000 lbs Winch
- E** INFEND-02FB
Front Inner Fenders
- F** RRBS2-01
Bump Stops
- G** FS-24
Front Bumper
- H** DV8-882
Beadlock Wheels
- I** FENDB-06
Slim Fenders



2007 -17 JK Jeep Wranglers

- 3/16" & 1/4" cold rolled steel
- High clearance - high degree angles and raised corners
- Light tabs and Solid D-rin mounts w/ rings included
- Textured black powder coating
- Winch plate included
- Trail tested and proven designs
- Will accommodate up to a 12,500 lbs winch
- .120 wall tubing for better durability
- Fit all 2007-2018 JK Jeep Wranglers w/ no drilling required
- Easy installation, Hardware included
- Recessed winch plate or bolt on winch plate included.



FBSHTB-01

Full Width front Bumper

- Accepts Factory Lights (not included)
- Winch Plate included
- *Dim: w72" x h19" x d14"
- *Weight: 100lbs



FBSHTB-07

Mid Width front Bumper

- Comes with integrated LED lights
- Recessed Winch Plate
- *Dim: w61" x h15.5" x d10"
- *Weight: 58lbs



FBSHTB-08

Mid Width front Bumper

- Comes with integrated LED lights
- Recessed Winch Plate
- *Dim: w60" x h9" x d20"
- *Weight: 78lbs



FBSHTB-10

Full Width front Bumper

- Accepts Factory Lights (not included)
- Recessed Winch Plate
- Integrated Skid Plate
- *Dim: w71" x h24" x d15"
- *Weight: 94lbs



FBSHTB-12

Mid Width front Bumper

- Patent Pending
- Accepts Factory Lights (not included)
- Recessed Winch Plate
- Integrated Skid Plate
- *Dim: w58" x h24" x d14"
- *Weight: 98lbs



FBSHTB-13

Stubby Width front Bumper

- Patent Pending
- Accepts Factory Lights (not included)
- Bolt on Winch Plate included
- *Dim: w49" x h21" x d9"
- *Weight: 100lbs



FBSHTB-14

Mid Width front Bumper

- Patent Pending
- Accepts Factory Lights (not included)
- Fits 10" LED light bar
- Recessed Winch Plate
- *Dim: w60" x h21" x d10"
- *Weight: 95lbs



FBSHTB-15

Stubby Width front Bumper Patent Pending

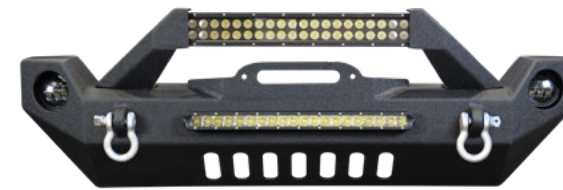
- Accepts Factory Lights (not included)
- Bolt on Winch Plate included
- *Dim: w47" x h17" x d11"
- *Weight: 95lbs



FBSHTB-16

Stubby Width front Bumper

- Accepts Factory Lights, 6" light bar (not included)
- Recessed Winch Plate
- Integrated Skid Plate
- *Dim: w45" x h18" x d11"
- *Weight: 72lbs



FBSHTB-17

Mid Width front Bumper Patent Pending

- Accepts Factory Lights (not included)(20" single row integrated light bar not included/20" light bar required for use of stinger bar)
- Integrated Skid Plate
- *Dim: w52" x h12" x d8"
- *Weight: 70lbs



FBSHTB-18

Full Width front Bumper

- Accepts Factory Lights, fits 20" light bar (not included)
- Recessed Winch Plate
- Integrated Skid Plate
- *Dim: w71" x h16" x d15"
- *Weight: 79lbs



FBSHTB-19

Mid Width front Bumper

- Accepts Factory Lights, fits 20" light bar (not included)
- Recessed Winch Plate
- Integrated Skid Plate
- *Dim: w59" x h16" x d13"
- *Weight: 68lbs



FBSHTB-24

Stubby Width front Bumper

- Accepts 20" light bar (not included)
- Recessed Winch Plate
- Dim: 49w x 8h x 12d
- Weight: 65lbs



FBSHTB-25

Stubby Width front Bumper Patent Pending

- Accepts Factory Lights (not included)(Accepts 20" single row light bar not included)
- Bolt on Winch Plate included
- *Dim: 51w x 21h x 14d
- *Weight: 100lbs

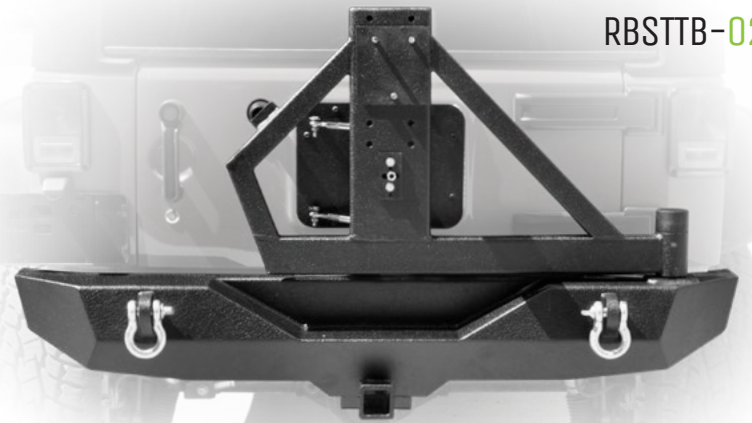
* Product dimensions and weights are approximate

2007 -17
JK Jeep
Wranglers

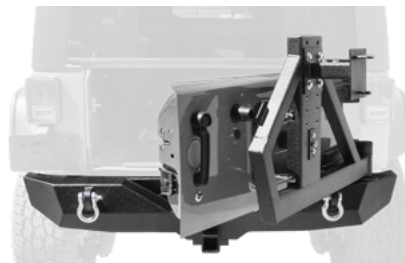
- 3/16" & 1/4" cold rolled steel
- High clearance - high degree angles and raised corners
- Solid D-ring mounts w/ rings included
- Textured black powder coating
- Class 3 hitch receivers
- Trail tested and proven designs
- All tire carriers will fit up to a 40" tire
- Tire carriers include a heavy duty tapered bearing for easy access to rear door
- Easy installation, NO modifications needed, Hardware included



RBSTTB-01



RBSTTB-02



Mid Width Rear Bumper
Tire Carrier

*Dim: w64" x h15" x d15"
*Weight: 85lbs

or RS-1BR (tapered bearing model)

Mid Width Rear Bumper
Tire Carrier

*Dim: w66" x h16" x d14"
*Weight: 85lbs

Single Action Bumper
and Tire Carrier

Door and Tire Carrier open in one action for effortless access offering aftermarket versatility with factory convenience.

RBSTTB-04



Mid Width Rear Bumper

- D-rings included
- Class 3 receiver
- *Dim: w63" x h10" x d12"
- *Weight: 64lbs

RBSTTB-06



Mid Width Rear Bumper Patent Pending

- D-rings included
- Class 3 receiver
- *Dim: w65" x h7" x d17"
- *Weight: 65lbs

RBSTTB-09



Full Width Rear Bumper Patent Pending

- D-rings included
- High Clearance Class 3 Hitch receiver
- *Dim: w72" x h9" x d20"
- *Weight: 72lbs

RBSTTB-10



Full Width Rear Bumper Patent Pending

- D-rings included
- High Clearance Class 3 Hitch receiver
- lights included
- *Dim: w71" x h9" x d17"
- *Weight: 72lbs

RBSTTB-14



Full Width Rear Bumper Patent Pending

- D-rings included
- Fits factory receiver
- (2" square LED's not included)
- *Dim: w72" x h9" x d16"
- *Weight: 71lbs

* Product dimensions and weights are approximate

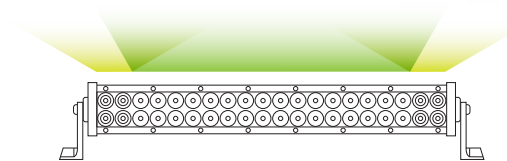


BR-20

BRS Pro Series -Universal fitment

These lights have a black textured face, polycarbonate lens, and a IP68 rating. All DVB LED lights use 3 watt CREE LEDs rated to 50,000 hours, have end and bottom mounts.

- **BRS-5**
24W total, 2000 Lumens, 5.5x3.25x3
- **BRS-12**
72W total, 7000 Lumens, 13.5x3.25x3
- **BRS-20**
120W total, 10100 Lumens, 21.5x3.25x3
- **BRS-30**
180W total, 13000 Lumens, 31.5x3.25x3
- **BRS-40**
198W total, 16000 Lumens, 41.5x3.25x3
- **BRS-50**
300W total, 21500 Lumens, 52x3.25x3



- 60° FLOOD
- 30° SPOT

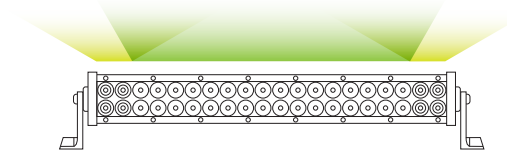


BC-20

Chrome Series -Universal fitment

Come with a polycarbonate lens, IP68 rating, flood/spot combo light pattern, and 3 watt CREE LEDs rated to 50,000 hours. All Chrome series lights come with end and bottom mounts.

- **BC-5**
24W total, 2000 Lumens, 5.5x3.25x3
- **BC-12**
72W total, 7000 Lumens, 13.5x3.25x3
- **BC-20**
120W total, 10100 Lumens, 21.5x3.25x3
- **BC-30**
180W total, 14500 Lumens, 31.5x3.25x3
- **BC-50**
300W total, 21500 Lumens, 52x3.25x3



- 60° FLOOD
- 30° SPOT

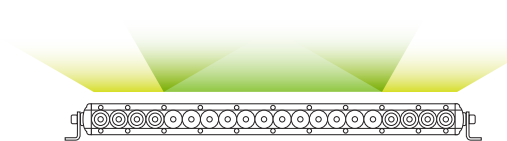


BS-20

SL8 Series -Universal fitment

Comes with a polycarbonate lens, IP68 rating, flood/spot light pattern, and 5 watt CREE LEDs that are rated to 50,000 hours. A low-profile design while still achieving maximum light output. End mounting only.

- **BS-10**
50W total, 3850 Lumens, 11x1.5x3
- **BS-20**
100W total, 7700 Lumens, 21x1.5x3
- **BS-30**
140W total, 11550 Lumens, 31x1.5x3
- **BS-40**
190W total, 14800 Lumens, 39.5x1.5x3
- **BS-50**
250W total, 19250 Lumens, 51.5x1.5x3



- 60° FLOOD
- 30° SPOT



HL-01



HL-02 w/Halo

LED Projector Headlights

LED projector headlights are a huge upgrade from stock JK headlights in both brightness and style. They use advanced optical technology to make the most of the LED lights that are housed within them.



TL-1



TL-2

LED Tail Lights

Off road LED Tail Lights are just the thing to set your Jeep apart from the others and are great to replace lights that have been damaged out on the trail.



R4-FL

LED Fog Lights

Lights are sized to be a direct factory replacement and will work in place of the factory fog lights in any application.



BC-M

LED Mirror Housing

The Off road LED mirror housing allows drivers to have a wider range of visibility. LEDs are angled slightly outward from center to promote a better field of view. The mirror also works as a turn signal to replace the factory fender signals when moving to after market fenders.



BC-3FM



BC-4



R3.5



BC-3



R2.2



S2.1

LED Cube and Rock Lights

Optical Technology and cutting edge design delivers unparalleled light output. These small rock lights deliver light right where you need it.



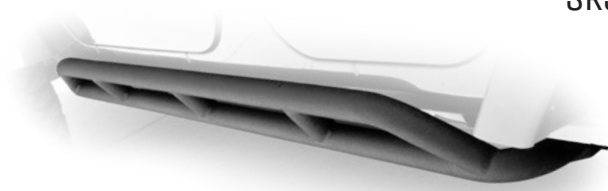
R5



S5

2007 -17
JK Jeep
Wranglers

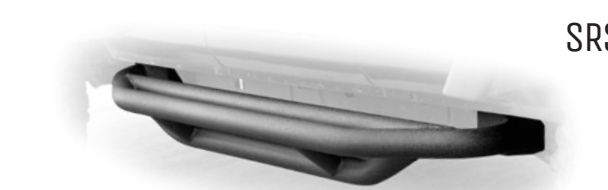
- Made from 2" .160 wall tubing and 3/16 cold rolled steel
- Trail tested and proven designs
- Two staged textured black powder coating
- Easy installation, NO modifications needed, Hardware included
- Available for 2 Door and 4 Door Jeep Wranglers 2007-2017



SRSOTB-01

4 Door Rock Slider

*Dim: w73" x h6" x d16"
*Weight: 45lbs



SRSOTB-03

2 Door Rock Slider

*Dim: w56" x h6" x d19"
*Weight: 45lbs



SRSOTB-04

4 Door Plated Rock Slider

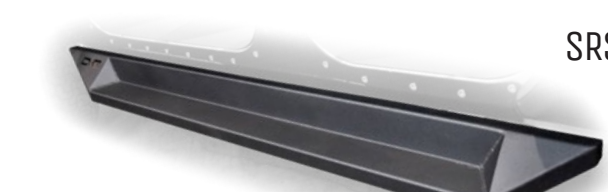
*Dim: w73" x h6" x d16"
*Weight: 45lbs



SRSOTB-06

4 Door Tube Steps

*Dim: w71" x h5" x d10"
*Weight: 50lbs



SRSOTB-10

4 Door Plated Steps

*Dim: w72" x h9" x d12"
*Weight: 55lbs



SRSOTB-05

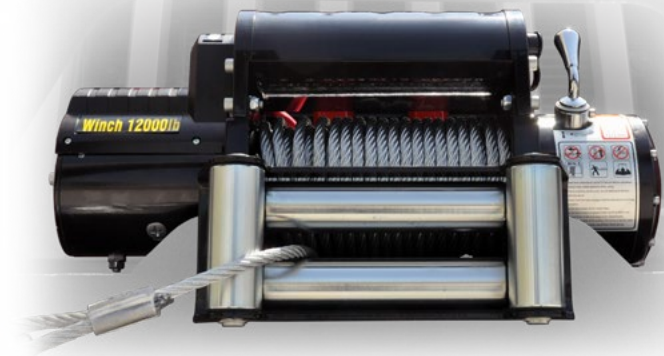
4 Door Rock Skins

- Note: Drilling Required for Installation

*Dim: w73" x h12" x d3"
*Weight: 29lbs

* Product dimensions and weights are approximate

WB-12SC



Steel Cable Winch

- 12,000 lb Capacity
- 6hp motor 12DC
- Gear Train: 3 staged planetary, Gear Reduction Ratio 256:1
- Steel Cable, Steel Roller Fairlead
- 12.5' wired and wireless remote included.
- Steel Control Box for added durability

WB-12SR



Synthetic Line Winch

- 12,000 lb Capacity
- 6hp motor 12DC
- Gear Train: 3 staged planetary, Gear Reduction Ratio 256:1
- Synthetic Line, House Aluminum Fairlead
- 12.5' wired and wireless remote included.
- Steel Control Box for added durability



2007 -17
JK Jeep
Wranglers

DV8 Off Road Hard Tops are built in the United States and use high quality seals, fiberglass, and advanced aerodynamics to produce the quietest tops on the market.

- Hand laid honey-comb reinforced fiberglass for added durability
- 31% tint DOT approved glass
- Military grade carpeted headliner for increased insulation and noise reduction
- UV stable GEL coat - Extra thick
- Quick release latching system
- Improved aerodynamic shape, Two piece targa designs
- Defrost rear windows
- Made in the USA



HT07FB42

Ranger-FB
Fast Back Hard Top

- Fits 4 Door 07-17
Jeep Wranglers

*Dim: w90" x h48" x d72"
*Weight: 140lbs



HT96SB22

Ranger-TJ
TJ Hard Top

- Fits 1996-2006
Jeep Wranglers

*Dim: w65" x h48" x d72"
*Weight: 125lbs



HT07SB42

Ranger-4
4 Door Hard Top

- Fits 4 Door 07-17
Jeep Wranglers

*Dim: w90" x h48" x d72"
*Weight: 148lbs



HT07SB22

Ranger-2
2 Door Hard Top

- Fits 2 Door 07-17
Jeep Wranglers

*Dim: w72" x h48" x d72"
*Weight: 135lbs



HT07FB22

Ranger-JK
2 Door Fast Back Hard Top

- Fits 2 Door 07-17
Jeep Wranglers

*Dim: w72" x h48" x d72"
*Weight: 135lbs

HARDTOP BREAKDOWN



2 piece Targa Design w/high quality automotive grade seals

Aluminum Machined Hinges

Mil Spec Carpeted Headliner

High quality automotive grade seals

Extra thick UV stable gel coating

2007 -17
JK Jeep
Wranglers

DV8 Off road Flat Fenders provide more tire clearance and more room to flex. They come with internal bracing to ensure strength and durability. DV8 fenders come in a satin black powder coating and can be painted to match or left as is.

- (4) Flat Fenders w/ thick tubing and rigid steel plating
- 4 Rubber guards to keep the fenders from rubbing on the Jeep's body
- Stainless steel mounting hardware
- Black powder coating
- Easy installation, NO modifications needed, Hardware included



FENDB-02



FENDB-06

DV8 Flat Fenders

DV8 Flat Fenders line up perfectly with the JK body lines and installation is extremely simple with precision cut holes to match the factory fender holes. DV8 fenders also come with our exclusive turn signal mounting bracket that can be used to mount an after market turn signal light. Ditch the factory plastic fenders that leave your JK vulnerable to expensive body damage and upgrade to DV8 steel fenders.

- Front width: 10.5"
- Rear width: 5.0"
- Textured 3 stage powdercoat
- Solid steel construction
- Light weight
- Bolt on installation
- Standard DV8 Warranty

*Weight: 60lbs

DV8 Slim Fenders

DV8's Slim Fenders were designed for maximum clearance when traversing narrow passages that would rip off an ordinary width fender. They bolt on with no drilling required and feature a turn signal light that can integrate into the factory harness.

- Front width: 7.375"
- Rear width: 4.75"
- Slim design
- Textured 3 stage powdercoat
- Solid steel construction
- Light weight
- Bolt on installation
- Standard DV8 Warranty

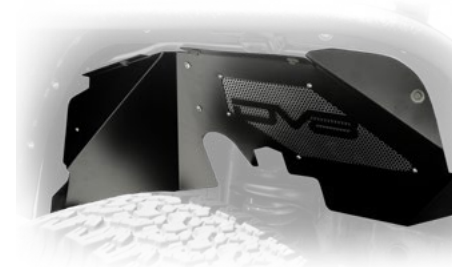
*Weight: 50lbs



INFEND-01FR US Patent No. D785,522



INFEND-01RR US Patent No. D785,522



INFEND-01FB US Patent No. D785,522



INFEND-01RB US Patent No. D785,522

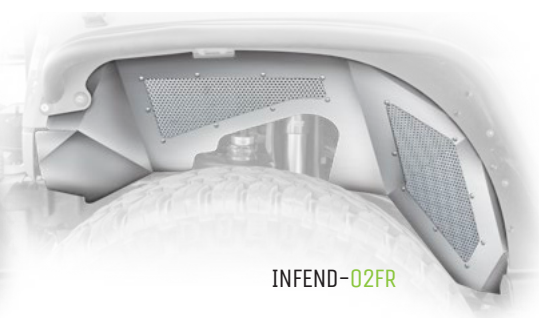


INFEND-01FBRL

US Patent No. D785,522



DV8 Inner Fender with integrated Rock Lights and bluetooth control module



INFEND-02FR

INFEND-02FB

2nd Generation Inner Fender with more clearance, protection and venting. Available in black or raw aluminum.

Patent Pending

2007 -17
JK Jeep
Wranglers

DV8 Off Road Aluminum inner fenders are designed to reseal your engine compartment when using after market fenders, Clean up your inner fender, and provide better air flow where it counts. DV8 Inner fenders are available in raw aluminum or powder coated black.

- Material: Aluminum
- Raw or Powder Coated Black
- Easy installation, NO modifications needed, Hardware included

* Product dimensions and weights are approximate

2007 -17
JK Jeep
Wranglers

GRILLS

Made from ABS plastic, this grill is thicker and more durable than your factory grill. All grills come with necessary seals and installation hardware. Grills are available in textured black.

- ABS plastic
- Color - Textured black
- Easy installation, NO modifications needed, reuse factory hardware

HOODS

DV8 Off Road hoods provide better air flow and reduced weight with dual vented designs. DV8 hoods are constructed from stamped steel.

- Easy Bolt on Installation
- Better Air flow for increased performance
- Reduce weight

GRABB07-01



DV8 Grill
ABS Grill Angry Eye Design in Textured Black

GRABB07-04



LED Grill
ABS Grill with steel mesh insert
20" Light Bar not included

HDMB07-TA



10th Anniversary Replica Hood
- Stamped Steel 10th Anniversary Edition replica hood.
*Dim: w40" x h10" x d42"
*Weight: 75lbs

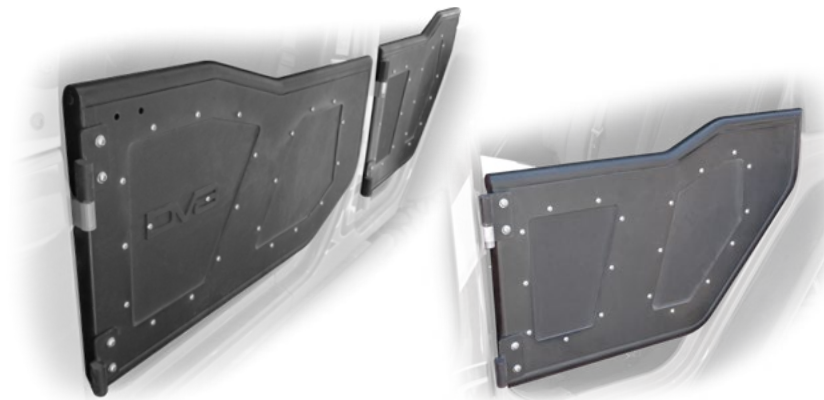
HDMB07-02



Heat Dispersion Hood
- Stamped Steel DV8 Heat Dispersion hood.
*Dim: w40" x h10" x d42"
*Weight: 80lbs



ROCK DOORS



RDSTTB-01

DV8 Rock Doors
- Rock Doors available for 2007-2017 Jeep Wrangler (2 and 4 door models)
*Dim: w33" x h22" x d8"
*Weight: 105lbs

- Limit straps to prevent door from swinging too far open
- Fully plated design (more protection from brush and debris)
- Rattle preventing stopper integrated in to the design
- High quality latches, Simple and easy to install, Plates can be removed to paint

WINDSHIELD MOUNTS



LBSWTB-01 Pod Mount
Easy installation using factory windshield bracket bolts. Fits 2007-2017 Jeep Wranglers



LBSRTB-05 50" Light Bar Mount
Compatible with end mounted or bottom mounted 50" LED Light Bars. Padded Mounts to protect painted surfaces. Easy Installation with no drilling required. Fits 2007-2017 Jeep Wranglers
*Dim: w52" x h9" x d5"
*Weight: 17lbs



TRAMP STAMP
TS01RSK
Steel Construction with vented grill. Fits 2007-2017 Jeep Wranglers
*Dim: w16" x h12" x d1"
*Weight: 5lbs



TTJK-01 Trail Table
- Made of Durable 1/8" Steel
- Holds up to 40lbs.
- Drilling Required for Installation
*Dim: n/a
*Weight: n/a

* Product dimensions and weights are approximate

2007 -17
JK Jeep
Wranglers

The DV8 body mounted tire carrier provides a high clearance tire mounting solution that is all about function. This carrier can be run with ANY aftermarket bumper for the JK. The Carrier holds the tire tighter to the body for better departure angles, and will fit any bolt pattern wheel. Includes a license plate relocation bracket and a cover for the old license plate mount.

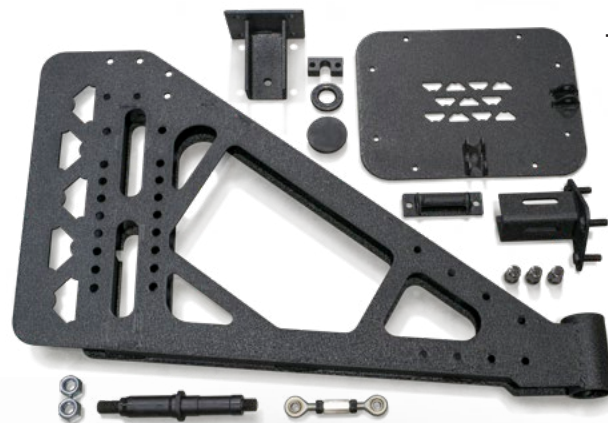


TC-1

Body Mount Tire Carrier

- Bolt on Tire Carrier accepts up to a 42" Tire
- .120 wall tubing to increase strength
- Will accept any bolt pattern
- High Quality Bushings for a quiet ride
- Removable plates make color matching easy
- Comes with License plate mount
- Some Drilling Required for Installation

*Dim: w55" x h34" x h21"
*Weight: 75lbs

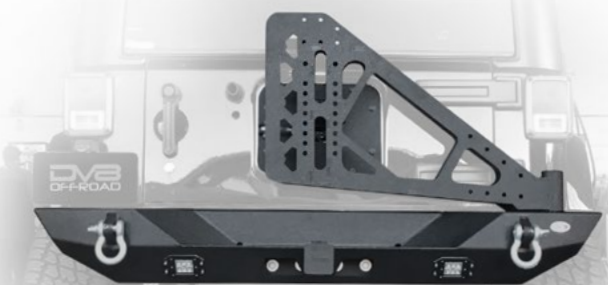


TC-6

Bumper Mount Tire Carrier

The TC-6 is a tire carrier that extends from the bumper (RS-10 & RS-11) to the Jeep's rear tailgate. Much like the DV8 RS-2, it opens along with the tailgate in 1 simple step. This carrier is designed to bolt onto your existing RS-10 or RS-11 bumper. It has a multitude of mounting points so you can mount your hi-lift jack, gas and water cans, or whatever else you like to bring with you.

*Dim: w39" x h24" x h8"
*Weight: 50lbs



* Product dimensions and weights are approximate

TCSTTB-09



Interior Tire Carrier with Rotopax Mounts

Interior tire carrier features hydraulic lifting mechanism to move the spare out of the way for storage works great with the JK tailgate replacement and bolts to the factory cage and floor panels.

- Accomodates up to a 40" tire
- Space to mount 2 rotopax
- Moves the spare inside the Jeep for hardcore offroading
- Increases departure angle clearances
- Moves the heavy spare assembly to a better balance point.

*Dim: n/a
*Weight: n/a

JK SUSPENSION

3.5" Lift Kit

DV8 Rock Runner Kit comes with front & rear track bars 4 DV8 Nitro Monotube shocks, 4 dual rate coil springs, extended sway bar endlinks, and extended brake lines.

- 3.5" lift kit, clears 35" tires, easy bolt on installation
- Vehicle specific spring rates, Stock drive line compatible
- Front & rear track bars - heim jointed chromoly track bars
- 4 patent pending DV8 progressive Rate coil springs
- Extended sway bar endlinks, Extended brake line brackets
- Includes 4 Monotube Rock Shocks

ROCK RUNNER



ROCK ROLLER



2.5" Lift Kit

The DV8 off road rock roller 2.5" lift kit was designed for those who want to gain additional ground clearance and accommodate 35" tires without compromising the factory ride. We accomplished this with longer springs and all of the necessary components to correct the suspension geometry for the lift. Add our unique shock extension kit or a set of dv8 monotube shocks for increased articulation and a completely dialed in ride.

- 2.5" lift kit, clears 35" tires, easy bolt on installation
- Vehicle specific spring rates, Stock drive line compatible
- Front & rear track bar brackets
- 4 patent pending DV8 progressive Rate coil springs, Alignment washers
- Extended sway bar endlinks, Extended brake line brackets, Bump stop extensions

2007 -17
JK Jeep
Wranglers

NITRO MONOTUBE
ROCK SHOCKS



2.0" Rock Shocks

Simply put, the thing that makes our monotube shocks stand out from the crowd is their size. Having a thicker body allows us to put more fluid into the shock which in turn results in better performance for longer.

Internal bump stops protect your shocks and suspension at full flex.

Finally, when a customer orders one of our lift kits we provide monotube shocks that are designed for that specific kit. The result is perfect harmony between ride quality and off road performance.

- 2" Diameter Shock Body
- Kit comes with 4 shocks
- Shock Valving is JK Specific

SHOCK EXTENSION KIT



2.5" Extension Kit

Add our shock extension kit! Properly positions factory length shocks to work with a 2.5" lift. Unique 1/4" brackets sandwich the factory mounts for more rigidity & less chance of bending compared to the competition. Hand milled billet aluminum rear extensions.

BUSHING STYLE
TRACK BARS



Adjustable Track Bars

DV8 is proud to introduce our bushing style adjustable track bars.

Note: Not Compatible With Frame Mounted Trackbar Drop Brackets

- Fully adjustable for a perfectly aligned ride
- Over double the diameter of the factory track bars at 1.5 inches (Front) -- 1.25 inch (Rear)
- Thick .375 wall DOM Steel Tubing (Front) and .250 Wall DOM Steel Tubing (Rear) Zinc Plated and Powder coated for corrosion resistance.
- Maintains the correct geometry with lift for better handling
- Can accommodate from 1-6 inches of suspension lift
- Quiet ride high flex rubber bushings

* Product dimensions and weights are approximate

RRBS2-01



Bump Stops

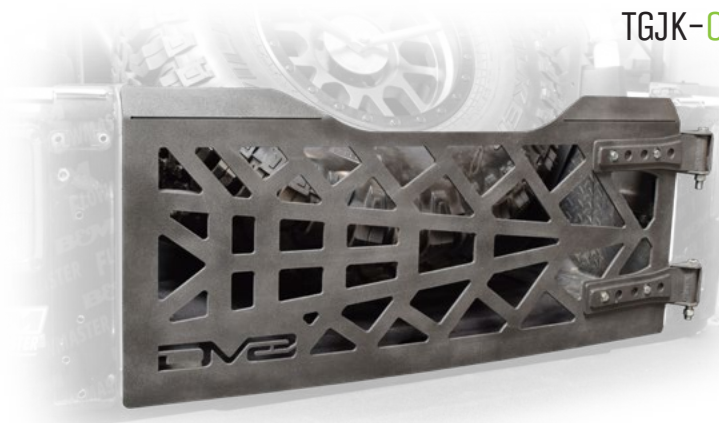
DV8 Threaded Body 2.0 Bump Stop with 2.5" Stroke. These heavy duty bump stops install directly into the JK coil bucket and prevent the suspension from bottoming out through the last few inches of travel.

Whether dropping off of a rock ledge or hitting the whoops, the factory bump stops can not effectively keep up with the force that is being exerted on them. Our bump stops control the last few inches of travel and provide additional dampening where it is most needed.

DV8 Bump Stops will help to save you and your Jeep from harshly bottoming out and allow for a more comfortable ride as you push your rig to its limits.

- Installs easily into the factory JK coil bucket
- Completely serviceable and rebuildable
- Valved perfectly for Jeep JK
- Locking Rings lock against each other for firm mounting
- Fully adjustable for different lift heights and tire sizes
- Comes with complete install instructions
- Sold in pairs

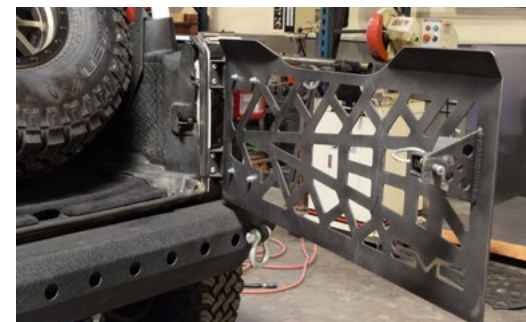
TGJK-01



Steel Open Air Tailgate

- Full tailgate replacement
- Works well with the TCJL-09
- Great for running with top off
- Allows for the TCJL-09 to fit a 40" tire
- Comes with tailgate hinge replacements

*Dim: n/a
*Weight: n/a





2019

DV8/REV
PRODUCT LINE

REV Off Road Wheels are designed for exceptional off road performance and aggressive styling to keep your vehicle off road ready. REV Off Road wheels are offered in a variety of finishes including matte black, gloss black, milled, and machined. All our wheels are tested to exceed factory specifications.

DV8-886
Simulated Beadlock
Wheels, 20"





DV8-882

Beadlock Racing Wheels

Patent Pending

- Wheels are constructed from 356-T6 Aluminum
- 3,500 lbs load rating
- 6061 T6 rings are 5/8" thick with tapered edge to avoid breaks
- Powder coated matte black with polished ring
- Recessed bolt holes to prevent shears
- Grade 8 Hardware included
- Sizes: 17x8.5, 20x9.5 - 5, 6, and 8 Lug
- Offset: -20mm to -20mm



DV8-887

Simulated Beadlock

Patent Pending

- One piece cast wheels, 2,500 lbs load rating
- Powder coated matte black with machined lip, bronze with matte black ring
- Sizes: 17x9, 6 x 120, Offset: +20mm
- GM Fitment only



DV8-886

Simulated Beadlock

Patent Pending

- One piece cast wheels, 2,500 lbs load rating
- Powder coated matte black with machined lip, bronze with matte black ring
- Sizes: 17x9, 20x9, 20x12 - 5, 6, and 8 Lug, Offset: 0mm to -44mm



DV8-883

Simulated Beadlock

Patent Pending

- One piece cast wheels, 2,500 lbs load rating
- Powder coated matte black with machined lip, bronze with matte black ring
- Sizes: 17x9, 20x9 - 5 and 6 Lug, Offset: 0mm to -12mm



REV-885

Finishes: Gloss Black, Gloss Black & Milled, Machined Rivets

Sizes: 17x9, 20x9

5 and 6 lug

0 to -12mm

Patent Pending



REV-895

Finishes: Gloss Black & Milled, Gloss Black Machined Rivets

Sizes: 17x9, 20x9, 20x12, 22x12 - 5 and 6 lug

0 to -44mm

Patent Pending



REV-823

Finishes: Gloss Black w/ Milling, Gloss Black, Machined Rivets

Sizes: 17x9, 20x9 - 5, 6 and 8 lug

0 to -12mm

Patent Pending



REV-840 ANACONDA

Finishes: Matte Black & Milled

Sizes: 17x9, 20x9

5 and 6 lug

+20mm to 0



REV-865

Finishes: Gloss Black & Milled, Machined Rivets

Sizes: 17x9, 20x9

5 and 6 lug

0 to -12mm

Patent Pending



REV-AMERICANA

Finishes: Matte Black w/Milling

Sizes: 20x9

6 and 8 lug

+18mm to 0



CS-15

Finishes: Gunmetal, Black

One Piece design

2,400 lbs. rated

Sizes: 17x9

5 x 127

+12mm



CS25

Finishes: Gunmetal, Black

One Piece design

2,400 lbs. rated

Sizes: 17x9

5 x 127

+12mm



DV8 Off Road truck bumpers are built with abuse in mind

TRUCK ACCESSORY

PRODUCT LINE

DV8 bumpers are tested and proven in the desert, heavy off road recovery, and utility. All of our front bumpers accommodate a 12,500lb winch, come with 7/8" D-ring shackles, and have holes for LED lighting. Our rear bumpers come with 7/8" D-ring shackles, will work with your factory hitch receiver, and have holes for LED lighting.

DV8 bumpers are made from 3/16 cold rolled steel with 1/4" + gusseting and mounting points. Every DV8 truck bumper comes with DV8's exclusive wrinkled 20 step powder coat. This finish looks great, is extremely durable, and is highly UV resistant. DV8 bumpers are 100% bolt on and include DV8's 2 year warranty against manufacturer defects. When you're tired of banging up your trucks thin fragile factory bumpers, DV8 has you covered.



VEHICLE	PART NO.	DESCRIPTION	FRONT	REAR
CHEVROLET	FBCS1-01	2007-2013 Chevy Silverado Front Bumper		
	FBCS1-04	2007-2013 Chevrolet Silverado Front 1500		
	RBCS1-01	2007-2013 Chevrolet Silverado Rear 1500		
	FBCS1-02	2014-2015 Chevrolet Silverado Front 1500		
	FBCS1-05	2016-2018 Chevrolet Silverado Front 1500		
	FBCS1-06	2016-2018 Chevrolet Silverado Front 1500		
	RBCS1-02	2016-2018 Chevrolet Silverado Front 1500		
	FBCS2-01	2011-2014 Chevrolet Silverado Front 2500/3500		
	FBCS2-02	2011-2014 Chevrolet Silverado Front 2500/3500		
	RBCS2-01	2011-2014 Chevrolet Silverado Rear 2500/3500		
FORD	FBFF1-06	2004-2008 Ford F-150 Front		
	FBFF1-02	2009-2014 Ford F-150 Front		
	FBFF1-01	2009-2014 Ford F-150 Front		
	RBFF1-01	2009-2014 Ford F-150 Rear		
	FBFF1-07	2015-2017 Ford F-150 Front		
	FBFF1-08	2018+ Ford F-150 Front		
	RBFF1-02	2015-2018 Ford F-150 Rear		
	FBFF2-01	2011-2016 Ford Front F-250/350/450		
	RBFF2-01	1999-2016 Ford Rear F-250/350/450		
	FBFF2-05	2008-2010 Ford F-250/350/450 Front		
	FBFF2-02	2011-2016 Ford F-250/350/450 Front		
	FBFF2-03	2017-2018 Ford F-250/350/450 Front		
	RBFF2-02	2017-2018 Ford F-250/350/450 Rear		
	DODGE	FBDR1-01	2013-2018 Dodge Ram Front 1500	
RBDR1-01		2010-2018 Dodge Ram Rear 1500		
FBDR1-02		2013-2018 Dodge Ram 1500 Front Bumper		
FBDR2-03		2006-2009 Dodge Ram 2500/3500 Front Bumper		
FBDR2-02		2010-2018 Dodge Ram 2500/3500 Front Bumper		
RBDR2-01		2010-2018 Dodge Ram 2500/3500 Rear Bumper		
TOYOTA	FBTT2-02	2007-2013 Toyota Tundra Front		
	FBTT2-01	2014-2018 Toyota Front Tundra		
	RBTT2-01	2014-2018 Toyota Rear Tundra		
	FBTT1-01	2005-2015 Toyota Front Tacoma		
	FBTT1-02	2005-2015 Toyota Front Tacoma		
	RBTT1-01	2005-2015 Toyota Rear Tacoma		
	FBTT1-03	2016+ Toyota Tacoma Front Bumper		
	RBTT1-03	2016+ Toyota Tacoma Rear Bumper		
FBTF-01	2007-2014 Toyota FJ Cruiser Front			
GMC	FBGS1-02	2007-2013 GMC Sierra 1500 Front		
	FBGS1-01	2014-2015 GMC Sierra 1500 Front		

DV8 Baja Style Truck Bumpers

CHEVROLET	FBCS1-03	2014-2018 Chevrolet Silverado 1500 Front Baja Style		
FORD	FBFF1-04	2009-2014 Ford F-150 Front Baja Style		
	FBFF1-03	2015-2017 Ford F-150 Front Baja Style		
DODGE	FBDR1-03	2009-2018 Dodge Ram 1500 Front Baja Style		
DODGE	FBDR1-04	2002-2007 Dodge Ram 1500 Front Baja Style		





FBCS1-01

Silverado Front Bumper

- Chevrolet
- Silverado 1500 2007-2013
- Accepts four 3.5" round LED lights (not included)

*Dim: w80" x h16" x d26"
*Weight: 110lbs



FBCS1-04

Silverado Front Bumper

- Chevrolet
- Silverado 1500 2007-2013
- Four flush mount LEDs (included)

*Dim: w87" x h17" x d29"
*Weight: 125lbs



FBCS1-02

Silverado Front Bumper

- Chevrolet
- Silverado 1500 2014-2015
- Four flush mount LEDs (included)

*Dim: w82" x h18" x d30"
*Weight: 115lbs



FBCS1-03

Silverado Front Bumper

- Chevrolet
- Silverado 1500 2014-2015
- 40" radius LED light bar (included)

*Dim: w80" x h18" x d29"
*Weight: 120lbs



FBCS2-01

Silverado Front Bumper

- Chevrolet
- Silverado 2500 2011-2014
- Accepts four 3.5" round LED lights (not included)

*Dim: w84" x h22" x d29"
*Weight: 188lbs



FBCS2-02

Silverado Front Bumper

- Chevrolet
- Silverado 2500/3500 2011-2014
- Two flush mount LEDs (included)

*Dim: w80" x h19" x d29"
*Weight: 120lbs



FBCS1-06

Silverado Front Bumper

- Chevrolet
- Silverado 1500 2016-2018+
- Two 3" cube lights (not included)

*Dim: w82" x h21" x d15"
*Weight: 75lbs



RBCS1-01

REAR BUMPER

Silverado Rear Bumper

- Chevrolet
- Silverado 1500 2007-2013
- Accepts Two 3.5" round LED lights (not included)

*Dim: w77" x h10" x d14"
*Weight: 75lbs



RBCS1-02

Silverado Rear Bumper

- Chevrolet
- Silverado 1500 2016-2018+
- Two 3" cube lights (not included)

*Dim: w77" x h12" x d16"
*Weight: 80lbs



FBGS1-02

GMC Sierra

Sierra Front Bumper

- GMC
- Sierra 1500 2007-2013
- Four flush mount LEDs (included)

*Dim: w82" x h19" x d33"
*Weight: 120lbs

* Product dimensions and weights are approximate



FBDR1-01

Dodge Front Bumper

- Dodge
- Ram 1500
2013-2018
- Accepts four 3.5" round LED lights (not included)

*Dim: w82" x h21" x d35"
*Weight: 108lbs



FBDR1-02

Dodge Front Bumper

- Dodge
- Ram 1500
2013-2018
- Four flush mount LEDs (included)

*Dim: w84" x h17" x d35"
*Weight: 118lbs



FBDR2-03

Dodge Front Bumper

- Dodge
- Ram 2500/3500
2006-2009
- Four flush mount LEDs (included)

*Dim: w82" x h18" x d32"
*Weight: 110lbs



FBDR2-02

Dodge Front Bumper

- Dodge
- Ram 2500/3500
2010-2018
- Four flush mount LEDs (included)

*Dim: w81" x h16" x d31"
*Weight: 108lbs



FBDR2-04

Dodge Front Bumper

- Dodge
- Ram 2500
2010-2018
- Four 3" cube lights (not included)

*Dim: w80" x h18" x d30"
*Weight: 100lbs

REAR BUMPERS



RBDR1-01

Dodge Rear Bumper

- Dodge
- Ram 1500
2013-2018
- Accepts Two 3.5" round LED lights (not included)

*Dim: w79" x h13" x d20"
*Weight: 90lbs



RBDR2-01

Dodge Rear Bumper

- Dodge
- Ram 2500
2010-2018
- Two flush mount LEDs (included)

*Dim: w79" x h13" x d20"
*Weight: 95lbs

RAM



* Product dimensions and weights are approximate



FBFF1-06

Ford Front Bumper

- Ford
 - F 150
 - 2004-2008
 - Four flush mount LEDs (included)
- *Dim: w86" x h19" x d33"
*Weight: 123lbs



FBFF1-01

Ford Front Bumper

- Ford
 - F 150
 - 2009-2014
 - Accepts four 3.5" round LED lights (not included)
- *Dim: w76" x h22" x d31"
*Weight: 118lbs



FBFF1-04

Ford Front Bumper

- Ford
 - F 150 / 2009-2014
 - 40" radius LED light bar (included)
 - NOTE: is not compatible with cross member extension or control arm drop bracket style lift kits.
- *Dim: w78" x h17" x d25"
*Weight: 118lbs



FBFF1-02

Ford Front Bumper

- Ford
 - F 150
 - 2009-2014
 - Four flush mount LEDs (included)
- *Dim: w81" x h16" x d36"
*Weight: 128lbs



FBFF1-03

Ford Front Bumper

- Ford
 - F 150 / 2015-2017
 - 40" radius LED light bar (included)
 - NOTE: is not compatible with cross member extension or control arm drop bracket style lift kits.
- *Dim: w78" x h32" x d12"
*Weight: 118lbs



FBFF1-07

Ford Front Bumper

- Ford
 - F 150
 - 2015-2017
- *Dim: w79" x h20" x d10"
*Weight: 109lbs



FBFF1-08

Ford Front Bumper

- Ford
 - F 150
 - 2018+
 - Two 3" cube lights (not included)
- *Dim: w40" x h11.8" x d14"
*Weight: 97lbs



FBFF2-01

F 250/350 Ford Front Bumper

- Ford
 - F 250/350
 - 2011-2016
 - Accepts four 3.5" round LED lights (not included)
- *Dim: w77" x h19" x d27"
*Weight: 178lbs



FBFF2-02

Ford Front Bumper

- Ford
 - F 250/350
 - 2011-2014
 - Four flush mount LEDs (included)
- *Dim: w86" x h18" x d28"
*Weight: 112lbs



FBFF2-03

Ford Front Bumper

- Ford
 - F 250/350
 - 2017-2018
 - Two 3" cube lights (not included)(10" single row light bar not included)
- *Dim: w43" x h16" x d16"
*Weight: 116lbs

* Product dimensions and weights are approximate



RBFF1-01

REAR BUMPER

Ford Rear Bumper

- Ford
- F 150
- 2009-2014
- Accepts Two 3.5" round LED lights (not included)

*Dim: w76" x h10" x d18"
*Weight: 82lbs



RBFF1-02

Ford Rear Bumper

- Ford
- F 150
- 2018+
- Two flush mount LEDs (included)

*Dim: w77" x h12" x d18"
*Weight: 90lbs



RBFF2-02

F 250

Ford Rear Bumper

- Ford
- F 250/350
- 2017-2018
- Two flush mount LEDs (included)

*Dim: w86" x h28" x d19"
*Weight: 110lbs



RBFF2-01

Ford Rear Bumper

- Ford
- F 250/350
- 2011-2016
- Accepts Two 3.5" round LED lights (not included)

*Dim: w76" x h18" x d10"
*Weight: 108lbs



* Product dimensions and weights are approximate



FBTT1-01

Toyota Front Bumper

- Toyota
- Tacoma
- 2005-2015
- Accepts Two 3.5" round LED lights (not included)

*Dim: w74" x h22" x d18"
*Weight: 130lbs



FBTT1-03

Toyota Front Bumper

- Toyota
- Tacoma
- 2016-2018
- Two 3" cube lights (not included)

*Dim: n/a
*Weight: n/a



FBTT2-02

Tundra

Toyota Front Bumper

- Toyota
- Tundra
- 2007-2013
- Four flush mount LEDs (included)

*Dim: w80" x h17" x d28"
*Weight: 108lbs



FBTT2-01

Toyota Front Bumper

- Toyota
- Tundra
- 2014-2018
- Accepts four 3.5" round LED lights (not included)

*Dim: w75" x h22" x d18"
*Weight: 148lbs



FBTF1-01

FJ Cruiser

Toyota Front Bumper

- Toyota
- FJ Cruiser
- 2007-2014
- Two flush mount LEDs (included)

*Dim: w66" x h23" x d15"
*Weight: 68lbs



RBTT1-01

REAR BUMPER

Toyota Rear Bumper

- Toyota
- Tacoma
- 2005-2015
- Two flush mount LEDs (included)
- *Dim: w70" x h11" x d15"
- *Weight: 75lbs



RBTT1-03

Toyota Rear Bumper

- Toyota
- Tacoma
- 2016-2018
- Two flush mount LEDs (included)
- *Dim: w69" x h16" x d16"
- *Weight: 110lbs



RBTT1-03ST

Toyota Rear Bumper Step Bolt on Step

- Toyota
- Tacoma
- 2016-2018
- *Dim: n/a
- *Weight: n/a



RBTT2-01

Toyota Rear Bumper

- Toyota
- Tundra
- 2014-2018
- Accepts Two 3.5" round LED lights (not included)
- *Dim: w71" x h12" x d15"
- *Weight: 118lbs



SRTT1-01

Toyota Rock Sliders

- Toyota
- Tacoma
- 2016-2018
- *Dim: w87" x h19" x d9"
- *Weight: 220lbs



SPTT1-01

Toyota Skid Plate

- Toyota
- Tacoma
- 2016-2018
- *Dim: n/a
- *Weight: n/a



* Product dimensions and weights are approximate