

DVBTM
OFFROAD



2021

ACCESSORIES
CATALOG



2021

TRAIL GEAR

3 ... DVB BEHIND THE BRAND

JT PRODUCT LINE

- 8 FRONT BUMPERS
- 10 REAR BUMPERS
- 11 TIRE CARRIERS
- 12 FENDERS
- 13 INNER FENDERS
- CHASE RACK
- 14 DOORS
- ROOF RACK
- 15 BED RACK
- BEDSIDE PROTECTION
- ROCK SLIDERS/STEPS
- 16 BODY ARMOR
- LIGHT MOUNTS
- 17 COMPRESSOR MOUNT
- HEADLIGHTS & ADAPTER
- 18 HOODS
- HINGE STEPS & FOOT PEGS
- 19 GRILLES
- SUSPENSION COMPONENTS
- 20 HARD TOP ACCESSORIES



JL PRODUCT LINE

- 24 FRONT BUMPERS
- 26 REAR BUMPERS
- 27 TIRE CARRIERS
- 29 SPARE TIRE DELETES
- REAR STORAGE
- SPEAKER/LIGHT BRACKET
- 30 ROOF RACKS
- 31 FENDERS
- 33 INNER FENDERS
- 34 DOORS
- 35 ROCK SLIDERS/STEPS
- 36 ROCK SKINS
- 37 ARMOR & SKID PLATES
- 38 LIGHT MOUNTS
- 39 COMPRESSOR MOUNT
- TRAIL TABLE
- HEADLIGHTS & ADAPTER
- 40 HOODS
- HINGE STEPS & FOOT PEGS
- 41 GRILLES
- REAR SKID PLATE DIESEL
- SUSPENSION COMPONENTS
- 42 HITCHES
- 43 HARD TOPS & ACCESSORIES

JK PRODUCT LINE

- 48 FRONT BUMPERS
- 51 REAR BUMPERS
- 53 TIRE CARRIERS
- 54 ROOF RACKS
- HITCHES
- SPARE TIRE DELETES
- 55 FENDERS
- 57 INNER FENDERS
- 58 DOORS
- 59 ROCK SLIDERS
- STEPS/SKINS

- 60 LIGHT MOUNTS
- TRAIL TABLE
- 61 HOODS
- GRILLES
- 62 HARD TOPS
- 65 SUSPENSION

TRUCK ACCESSORIES

- 69 BUMPER CHART
- 71 CHEVROLET
- 73 GMC
- 74 FORD
- 77 DODGE (RAM)
- 79 TOYOTA
- 83 LEXUS

ACCESSORIES

- 87 JK
- 95 JL/JT
- 97 TJ
- 99 YJ
- 100 ... UNIVERSAL

UNIVERSAL PRODUCTS

- 103 ... LIGHTS
- 109 ... WINCHES
- LICENSE PLATE MOUNTS
- 111 WHEELS



D-RINGS INCLUDED



WINCH COMPATIBLE



Watch for our full product line for the Ford Broncos COMING END OF 2021

DV8TM OFF-ROAD

BEHIND THE BRAND

WHY CHOOSE US?

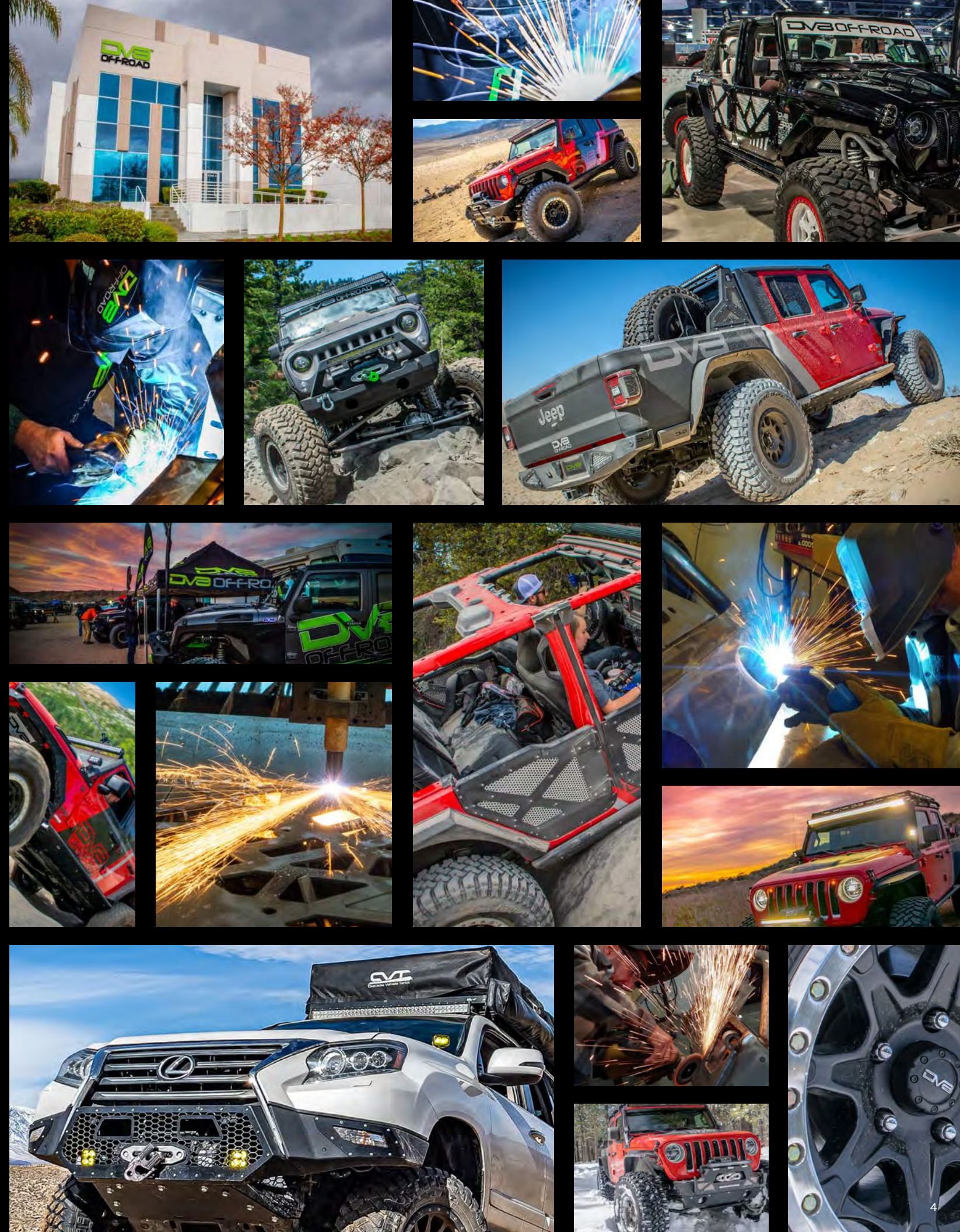
Here at DV8 Off-Road, we are enthusiasts. We understand the importance of creating a quality Truck or Jeep off-road product that's both durable and functional, on and off the trail. We build heavy-duty, aggressive and long-lasting parts that elevate your vehicles styling and performance. Engineered specifically for off-road, all DV8 products for your Truck, Jeep JK and Jeep JL/JT are put through rigorous testing to keep you out of the shop and on the trails. Just like you, we enjoy taking the DV8 Off-Road rigs out and pushing the limit. These steps ensure we provide the highest-quality parts and accessories that are just as amazing as the vehicle itself.



OUR TEAM

Our Team is made up of passionate and creative men and women who embody the off-road lifestyle.

They are outgoing, active and willing to deviate from the beaten path. This passion allows us to provide the best available products to the off-road community. We are proud to stand behind all of our products. At DV8 Off-Road, having a modified Jeep or Truck isn't just a way to get around, it's an expression of who you are.



DVBTM
OFF-ROAD



2020+ **JT**
GLADIATOR
PRODUCT LINE



DV8'S
MOST POPULAR
JT TRAIL GEAR



RBGL-01
High Clearance
Rear Bumper



SRGL-02
Boxed Sliders

RRGL-01
Chase Rack



TOP ITEM FBJL-01



FRONT BUMPERS

Stubby Bumper w/Bull Bar

The FBJL-01 features a high clearance design and incorporates a protected 20" slim LED light bar for increased visibility.

- High clearance design - aggressive angles and styling
- Incorporates a 20" LED light bar (DV8 P/N:BS20E100W5W)
- Reinforced bull bar



NEW FBJL-02



Full Width/Stubby Modular Bumper

The FBJL-02's premium modular front bumper is the best option for your JL/JT. Made from 3/16" steel, the FBJL offers protection at all angles. The FBJL-02 comes with stubby wings, however if you prefer the full width protection, we have that covered with our FBJL-02W full width wings. Includes a full front skid plate along with billet aluminum accents that double as light mounts.

- High clearance modular design - aggressive angles and styling
- Full skid plate, Incorporates stock LED fog lights
- Paintable aluminum accents and premium sand powdercoating



NEW FBJL-02W
WINGS ONLY



FBJL-10



Full-width

Full Width/Stubby Modular Bumper w/Bull Bar

The FBJL-10 features a high clearance design and incorporates a modular design so you can go between full and stubby designs. This bumper is designed specifically for the Jeep JL/JT and requires no drilling to install.

- High clearance design - aggressive angles and styling
- Modular design
- Incorporates stock LED fog lights
- Reinforced bull bar



Stubby

FRONT BUMPER ADAPTER

ABJL-01

JK to JT Front Bumper Adapter Bracket

- JK to JT adapter bracket allows for the use of any DV8 JK 2007-2018 front bumpers on 2020+ Jeep JT
- Brackets are made of 3/16" cold rolled steel and powder coated textured black
- Comes with Grade 8 hardware
- Maintains winch capability



COMPATIBLE 2018 JEEP JK WRANGLER FRONT BUMPERS

Current JK front bumpers that are compatible w/2019+ Jeep Gladiator
 - See pages 48-50 for bumper styles listed below

PRODUCT	PART NO.	DESCRIPTION
FS-1	FBSHTB-01	Full Length Front Bumper
FS-6	FBSHTB-06	Mid Front Bumper
FS-7	FBSHTB-07	Mid Front Bumper w/LED Lights
FS-8	FBSHTB-08	Mid Front Bumper w/LED Lights
FS-11	FBSHTB-11	Mid Front Bumper 11 w/ LED Lights
FS-13	FBSHTB-13	Stubby Front Bumper w/Fog Lights (lights not included)
FS-14	FBSHTB-14	Mid Front Bumper w/Fog Lights & LED (lights not included)
FS-15	FBSHTB-15	Stubby Front Bumper w/Fog Lights (lights not included)
FS-24	FBSHTB-24	Stubby Front Bumper w/Light bracket & winch plate
FS-25	FBSHTB-25	Stubby Front Bumper w/20" Light Bar & winch plate (Light Bar not included)



TOP ITEM RBGL-01



High Clearance Bumper

DV8 Offroad's RBGL-01 was designed to be tucked up and out of the way for traversing difficult trails and coming off sharp ledges. While offering offroad capabilities, the on-road styling with the paintable aluminum inserts give the RBGL-01 the best of both worlds. Designed to accept factory sensors, hitch, and hitch wiring, this bumper checks off everything desired.

- Lightweight, high clearance design/aggressive angles and styling
- Paintable Aluminum Accents
- Compatible w/factory hitch

NEW RBGL-03



Step Bumper with Drawer

The DV8 Offroad's RBGL-03 was designed to give you more space to store gear safely and securely. Our drawer offers heavy duty roller bearing slides, hidden lockable latch, and a 3/16" skid plate under the drawer to keep all your cargo safe when on the trail. Our bumper also features large cutouts that function as steps to allow easy access in and out of the bed.

- Sliding and locking drawer
- Step cutouts for easy entry and exit
- Accommodates backup sensors

NOTE: Install requires minor modifications and relocation of the spare tire - See pg. 13 for options.

- Compatible w/factory hitch



RBGL-04



Mid Length High Clearance Bumper

- High clearance design with aggressive angles and styling
- License plate mounting system with light
- Accommodates backup sensors

- Compatible w/factory hitch

NEW RBGL-05



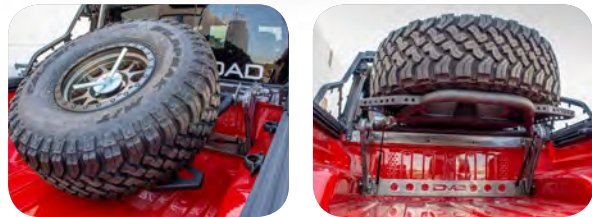
Ultra Slim High Clearance Bumper

RBGL-05 ultra slim bumper ensures that your Gladiator is tucked up high and tight. Offering (2) 3" included pods for additional backup lighting. This bumper comes with a high clearance 2" heavy duty accessory hitch.

- Ultra slim design
- License plate relocation bracket (included-shown above bumper)
- Boot size foot steps



TOP ITEM TCGL-01



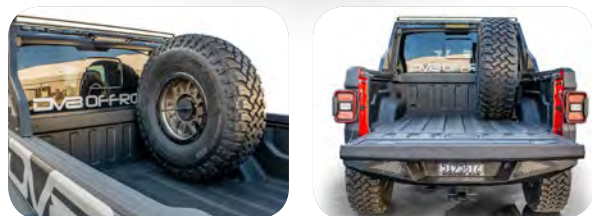
Inner Bed Tire Carrier

The DV8 Offroad TCGL-01 relocates the spare tire to the bed of your Gladiator with no drilling into the bed required. This carrier mounts to existing locations and is rigid enough to support up to a 42" tire. The carrier also allows for two easily adjustable tire positions, the first places the tire at a 45 degree angle, the second puts the tire parallel to the bed and allows use of the area underneath it to haul extra cargo or gear.

The carrier is rigid enough to support the tire in either position while on or off road. It also comes with two HD gas shocks which make raising and lowering the tire a breeze.

- Adjustable tire carrier with two mounting positions
- Gas shocks to assist with moving the spare
- Universal mount design allows for virtually any bolt pattern or center bore
- Easy install with no drilling required

TCGL-02



Stand Up Spare Tire Mount

The DV8 Offroad TCGL-02 stand up tire carrier relocates your spare tire from the cramped factory location to the inside of the bed. The carrier is made of 3/16" steel which offers a strong and rigid mounting system to prevent any movement on or offroad.

With maximum adjustability, our carrier gives you the ability to mount up to a 42" tire with any bolt pattern. Our universal design allows you to run our carrier on either side of the bed or two at the same time!

- Stand up tire carrier relocates your spare tire from the cramped factory location to the inside of the bed
- Made of 3/16" steel
- Powdercoat Black
- Maximum adjustability
- Mount up to a 42" tire with any bolt pattern

NOTE: Utilizes factory bed rails

FENDERS SLIM/ARMOR

FDGL-01



FRONT

REAR

High Clearance Flat Slim Fenders

- Slim Design for max protection and clearance
- 100% bolt on and require no cutting or drilling
- Integrated LED turn signals
- Lightweight and built tough
- Fender width: 7" front | 4.5" rear



FDGL-02



FRONT

REAR

High Clearance Armor Fenders

Slim Design for max protection and clearance. Aluminum vents can be color matched to give your Jeep an overall custom look.

- Slim Design for max protection and clearance
- 100% bolt on and require no cutting or drilling
- Lightweight and built tough
- Fender width: 7.3" front | 4.75" rear



NEW FDGL-03



FRONT

REAR

Fender Delete Kit

The FDGL-03 fender delete kit was designed to maximize tire clearance and completely eliminate the factory fenders. Eliminating the fenders keeps the body of the Jeep further away from obstacles such as trees, rocks, and boulders and allows you to squeeze through tight spots that would be impossible to get through with a full width Jeep.

- Laser cut 3/16" steel
- Form fitting and textured powdercoat
- 100% bolt on design
- Includes LED Turn Signal



TOP ITEM INFEND-03FR

Raw aluminum

INFEND-03FB

Black

Front Inner Fenders

- Protects the engine compartment from mud, dust, and debris
- Better airflow to keep your engine compartment cooler
- Mounts with the factory fenders and most aftermarket fenders
- Available in raw aluminum or black powder coating.

INFEND-04RB



Inner Rear Fenders

The DV8 Offroad Gladiator rear inner fenders are designed to add a finished look to your Gladiator with aftermarket fenders. Our inner fenders cover up and protect the unsightly components that are exposed when the OEM inner fender is removed. These are precision bent, and powdercoated.

- Easy to install
- Protect vital components
- Clean up the inner wheel well
- Prevent mud/ debris from building up

NOTE: Only available in black

TOP ITEM RRGL-01



Bolt On Chase Rack

The DV8 Offroad RRGL-01 Chase Rack is a completely bolt on rack that features multiple mounting options for lights. The rack bolts securely to the bed of the gladiator and completely enhances the looks of the truck. This rack also features mesh aluminum accents that can be unbolted and color keyed to match your vehicle or theme. This rack features the option to mount a 50" light bar behind the cab where wind noise is much less of a factor than a standard windshield mount light bar.

- Multiple lighting configurations
- Solid steel construction - Light weight
- Bolt on installation
- Side lights shown are DV8 P/N B3CE16W4W
- Upper light shown is DV8 P/N BS50E250W5W
- Rear facing light shown is DV8 P/N BS10E50W5W



RDJL-01F

FRONT

RDJL-01R

REAR



HDJL-01R

REAR

HDJL-01F

FRONT



MIRRORS

NEW RRJL-02



Rock Doors

- Comes with perforated aluminum screens
- Screens can be painted to match Jeep
- Doorless visibility with added protection
- Limit straps to prevent door from swinging too far open
- Rattle preventing stopper integrated into the design
- Available for 2 door or 4 door models
- Comes with replacement mirrors

Half Doors

- Comes with perforated aluminum screens
- Screens can be painted to match Jeep
- OEM styling
- Doorless visibility with added protection
- Available for 2 door or 4 door models
- Comes with replacement mirrors

Roof Rack

DV8 Offroad's Jeep JK 4 Door/JL 2 Door/Gladiator Roof Rack offers utility and ease. With a no drill design, our roof rack gives you the ability to put on or remove the roof rack in minutes.

Extending almost the full length of the rain gutter, maximum storage is available. With a weight limit of 200lbs evenly distributed, you can toss all your camping gear that doesn't fit into the Jeep on top!

- 1/8" Thick Steel
- Tie down Points on all Sides
- 100% Bolt-on design
- Noise Reduced Design



NEW RRUN-01

Bed Rack

Designed for the long haul. The 8" tall half-cab height rack was built to allow you to mount more than just a tent. Included in the kit is 2 Rotopax mounts as well as Hi Lift mounts. The adjustable front and back halves allow for the best fitment with your setup.

- 3/16" Cross Bars
- 5" single row light mount
- Rotopax and Hi-Lift mounts included
- Sand texture powder coating



SRGL-01

Bedside Protection

The DV8 Offroad SRGL-01 bedside sliders provide great protection for the bed of your Gladiator when coming off of an obstacle. It's no secret that the departure angle of the Gladiator can create times where you will be happy you had adequate bedside protection. DV8 has over-engineered this product to take a beating. It's made of a combination of 1/4" and 1/2" steel which is fully gusseted.

- Fully gusseted
- Made of thick high grade steel
- Excellent protection
- Bolt on install
- Sand black powdercoat finish



NEW SRGL-04

Rock Slider

These heavy duty tube sliders made from .250 wall tubing are multi-frame mounted and offer serious protection offroad. The classic tube slider design is used for maximum coverage, with skid plates incorporated into the front and rear ensure a easy approach and departure from any obstacle.

- Frame Mounted
- Built-in front and rear skid plates
- Sand texture powder coating



SRGL-05

Rock Skins

Rock Skins can be used with any Gladiator step or slider. They are designed to add protection to the exposed area of the body between the door and the bottom of the body which is one of the most susceptible areas on any Jeep for trail damage.

- Made with 3/16" steel
- Powdercoated DV8 Textured Black
- Attach securely using nutserts

LIGHT MOUNTS



TOP ITEM LBJL-01

Over Windshield Light Bar Bracket

- Secure mounting of a 50" LED light bar over the windshield of the JL (See pages 103 & 105 for compatible light bars)
- 51.5" mount to mount
- Lightweight and strong
- Space for wiring is provided
- Hardware included



LBJL-02

Dual Pod Light Lower A Pillar Mount

- Securely mount 4 LED pod lights on the JL (DV8 P/N: B3CE16W4W)
- Easy Bolt on install
- Comes powdercoated DV8 textured black
- Hardware included



TOP ITEM SRGL-02

SLIDERS/STEPS

Boxed Sliders

The most vulnerable areas on the body are the rocker panels. Sliders protect your rocker panel area while enabling you to slide over rocks and obstacles.

- Sliders use body mounts for ultimate durability
- Attach with factory hardware
- At 4" wide it can be used as a step



SRGL-03

Rock Slider/Step

They are designed to add protection to the exposed are of the body between the door and the bottom of the body which is one of the most susceptible areas on any Jeep for trail damage.

- Made with 3/16" steel
- Powdercoated DV8 Textured Black
- Non-slip design



LBJL-03

Over Hood 40" Light Bar Mount

- Securely mount a 40" LED light bar (DV8 P/N: BS40E110W5W)
- Gusseted design for sturdy mounting
- Comes powdercoated DV8 textured black
- Will not affect hood opening and closing
- Easy to wire and mount using factory hardware



CMJL-01

Engine Bay Compressor Mount for ARB

This is the only mount on the market today that allows for an ARB twin compressor to be mounted inside the JL/JT engine bay as it was meant to be! The mount comes with all hardware needed for install and is powdercoated standard DV8 black.

- Mounts the compressor out of the way
- Can be used with both DV8 inner fenders or factory inner fenders

NOTE: will only work with 3.6 L engines.

NEW HLCJL-01
w/Halo



LED JL Projector Headlights

The DV8 Offroad HLCJL-01 is the ultimate JL replacement headlight. This light is 9" wide (factory size) and is made of OEM quality materials inside and out. The light replicates the upgraded LED kit from Jeep for a fraction of the price. The lights come with everything necessary for install including wiring harnesses, ballasts and installation hardware.

- Plug and play installation
- Direct LED replacements
- Install just like OEM
- Bright white light output



BCABJL-01

Headlight Adapter w/Wiring

An adapter kit to fit 7" JK or TJ headlights onto a Jeep JL and Gladiator. Let's face it, there are a lot of really cool and inexpensive 7" headlights for older generation Jeeps. With this kit, you have everything you need to mount aftermarket headlights into your Jeep!

- Plug and play with harness adapters for wiring
- Will work with any 7" JK or adjustable TJ headlight similar to OEM

TOP ITEM

HDMBJL-01



HDMBJL-TA



DV8 HOODS

Heat Dispersion Hood

Constructed from stamped steel offering added strength and reduced heat. This design provides much better air flow with its vented layout and allows engine heat to disperse through vents which helps in keeping the engine and overall compartment temps down resulting in all-around increased performance.

NOTE: Recommend professional installation including prep, fitting, seam sealer and painting for ultimate fitment. Always test fit before painting.

Rubicon Replica Hood

Constructed from stamped steel offering added strength and reduced weight. This design is meant as an upgrade for the standard JL Wrangler hood.

Our hoods come with an under hood insulation liner and are prepped with a rust inhibitor ready to be prepped, painted, and installed.

NOTE: Recommend professional installation including prep, fitting, seam sealer and painting for ultimate fitment. Always test fit before painting.

STJL-01



Hinge Mounted Steps

These hinge mounted steps for the JL allow easy access to the roof of your Jeep and flips up to be out of the way when not in use. Ball catches hold the step in place in the upward position, and it comes with special washers to keep the step from damaging the paint. Finally, a pedal style step that ensures you won't slip in mud sand or snow.

- Stainless steel hardware - Easy to mount
- Anti-slip step with ball Catch hinge

STJL-02



Hinge Mounted Foot Pegs

These Pegs were designed to provide a stable point just outside of the door of your Jeep to kick a foot out and enjoy a doorless ride even more!

- Made from 3/16" Steel with lock In design
- Sold in pairs



GRJL-01

DV8 GRILLE

Replacement Grille **Black**

The DV8 Offroad GRJL-01 replacement grille adds a menacing look to the front end of your ride. With the JL's larger 9" headlights, the angry eye look has never been so mean.

- Replaces OEM grille
- Easy to paint and easy to install

NEW GRGL-01



LED Amber **Marker Lights**

DV8 Offroad's GRGL-01 amber marker lights are a perfect addition to the front of your Gladiator. Our ultra-bright LEDs offer the ability to be noticed in dark or dusty conditions. The GRGL-01 also gives your Gladiator an aggressive prerunner look without cutting or drilling necessary. Utilizing the holes in the grille our Gladiator grille bracket aligns the lights perfectly without any hassle.

- (3) Amber ultra-bright LEDs / Wiring included
- Easy to Install

NEW TBJL-01F



DV8 SUSPENSION

Adjustable **Track-Bar Front**

This Heavy Duty Adjustable Track Bar is perfect for any JL or Gladiator with up to a 4.5" lift. Our track bar is made from 1.5" .165 thick tubing. Designed to center the axle under the Jeep, our track bar is a great compliment when raising your Jeep.

- 1.5", .165 High Grade Steel Tubing
- Heavy Duty Adjustable Rod End
- Black Powder Coat

DV8 SKID PLATES

Skid Plate **Front Differential**

DV8's SPJL-11 skid plate is designed to protect your Dana 44 factory front axle housing. With the axle one of the most brutalized pieces offroad, our 3/16" plate design will offer the most defense against the rocks. With our 100% bolts on design, it is a simple and effective way to keep you on the trail.

- 2018-Present Jeep JL Front Diff Skid Plate D44
- 3/16" plate steel means differential protection
- 100% Bolt on application

SPJL-11



TOP ITEM RRBS2-01



Bump **Stops**

DV8 Threaded Body 2.0 Bump Stop with 2.5" Stroke. These heavy duty bump stops install directly into the coil bucket and prevent the suspension from bottoming out through the last few inches of travel.

- Completely serviceable and rebuildable
- Locking Rings lock against each other for firm mounting
- Fully adjustable for different lift heights and tire sizes
- Sold in pairs

NOTE: Installs directly into the front coil bucket. To use on rear axle, additional hardware and custom mounting is required.

HTJL-L



Hard Top Latch **Closure Mechanism**

The HTJL-L hard top closure mechanism is designed to replace the factory closure mechanisms from Jeep. This low cost alternative is great if you have a broken or loose latch on your OEM top and also fits onto aftermarket tops.

- Replaces worn out latches
- Bolts on directly
- Powdercoated

HTJL-H



Billet T-Handles **for JL Hardtop**

The HTJL-H kit is designed to replace the plastic OEM hardtop closure handles with strong billet aluminum handles. These handles are precision made by a CNC machine and anodized for a clean black finish. The kit comes with all hardware necessary to mount your new handles and each kit comes with 6 handles.

- Replace brittle OEM handles
- Made of high grade aluminum
- Anodized black finish
- Come with all hardware

HTJL-BR



OEM Style **Hardtop Mounting Brackets**

The DV8 Offroad HTJL-BR Mounting Bracket Set is used to mount a hardtop on a JL Wrangler that came from the factory with the soft top package.

- Allows JL owners to mount a hardtop
- Meant for Jeeps that came with a soft top
- Much less expensive than OEM alternatives
- Includes all hardware and brackets necessary

DVBTM
OFFROAD



2018+
JL PRODUCT
LINE



DV8'S
MOST POPULAR
JL TRAIL GEAR



HDMBJL-01
Heat Dispersion Hood

LBJL-01
Over Windshield
Light Bar Bracket



INFEND-03FB black
Aluminum Inner
Fenders

TOP ITEM FBJL-01



FRONT BUMPERS

Stubby Bumper w/Bull Bar

The FBJL-01 features a high clearance design and incorporates a protected 20" slim LED light bar for increased visibility.

- High clearance design - aggressive angles and styling
- Incorporates a 20" LED light bar (DV8 P/N:BS20E100W5W)
- Reinforced bull bar



NEW FBJL-02



Full Width/Stubby Modular Bumper

The FBJL-02's premium modular front bumper is the best option for your JL/JT. Made from 3/16" steel, the FBJL offers protection at all angles. The FBJL-02 comes with stubby wings, however if you prefer the full width protection, we have that covered with our FBJL-02W full width wings. Includes a full front skid plate along with billet aluminum accents that double as light mounts.

- High clearance modular design - aggressive angles and styling
- Full skid plate, Incorporates stock LED fog lights
- Paintable aluminum accents and premium sand powdercoating



NEW FBJL-02W
WINGS ONLY



FBJL-10



Full-width

Full Width/Stubby Modular Bumper w/Bull Bar

The FBJL-10 features a high clearance design and incorporates a modular design so you can go between full and stubby designs. This bumper is designed specifically for the Jeep JL/JT and requires no drilling to install.

- High clearance design - aggressive angles and styling
- Modular design
- Incorporates stock LED fog lights
- Reinforced bull bar



Stubby





ABJL-01

FRONT BUMPER ADAPTER

JK to JL Front Bumper Adapter Bracket

- JK to JL adapter bracket allows for the use of any DV8 JK 2007-2018 front bumpers on 2018+ Jeep JL
- Brackets are made of 3/16" cold rolled steel and powder coated textured black
- Comes with Grade 8 hardware
- Maintains winch capability

COMPATIBLE 2018 JEEP JK WRANGLER FRONT BUMPERS

Current JK front bumpers that are compatible w/2018+ Jeep JL
 - See pages 48-50 for bumper styles listed below

PRODUCT	PART NO.	DESCRIPTION
FS-1	FBSHTB-01	Full Length Front Bumper
FS-6	FBSHTB-06	Mid Front Bumper
FS-7	FBSHTB-07	Mid Front Bumper w/LED Lights
FS-8	FBSHTB-08	Mid Front Bumper w/LED Lights
FS-11	FBSHTB-11	Mid Front Bumper 11 w/ LED Lights
FS-13	FBSHTB-13	Stubby Front Bumper w/Fog Lights (lights not included)
FS-14	FBSHTB-14	Mid Front Bumper w/Fog Lights & LED (lights not included)
FS-15	FBSHTB-15	Stubby Front Bumper w/Fog Lights (lights not included)
FS-24	FBSHTB-24	Stubby Front Bumper w/Light bracket & winch plate
FS-25	FBSHTB-25	Stubby Front Bumper w/20" Light Bar & winch plate (Light Bar not included)

REAR BUMPERS | Fit all 2018+ JL models



Full Length Bumper

- Made from 3/16" cold rolled steel and highly UV resistant dual layer powder coat that resists rust.
- Accommodates backup sensors, factory hitch, two integrated LED lights (included), license plate mount
- Compatible with TCJL-06 tire carrier
- Full wrap around design



Full Length High Clearance Bumper

- High clearance design and two recovery shackle attachments
- Incorporates two integrated LED Backup Lights (6"x3") (included)
- Accommodates backup sensors and factory hitch



Bumper Delete High Clearance Bumper

- High clearance design with aggressive angles and styling
- Lightweight
- Accommodates factory hitch



Mid Length Bumper

- High clearance design with aggressive angles and styling
- License plate mounting system with light
- Mid-width design accomodates TCJL-06
- Accommodates backup sensors and factory hitch



Mid Length High Clearance Bumper

- High clearance design with aggressive angles and styling
- License plate mounting system with light
- Lightweight
- Accommodates backup sensors and factory hitch





TOP ITEM RBJL-08



Bumper Mount Tire Carrier

- High clearance design with aggressive angles and styling
- Tire carrier connects to rear tailgate for easy operation
- Accommodates up to a 40" tire
- Tire carrier mounts directly to the bumper
- Accommodates backup sensors, backup camera, and factory hitch.
- Accommodates factory 3rd brake light assembly



TCJL-01



Tire Carrier

- DV8 Adjustable Tire Carrier allows for mounting up to a 35" tire to the factory tailgate
- Made from 3/16" cold rolled steel.
- Accommodates factory 3rd brake light assembly
- Remounts factory back up camera in a stout steel housing.

TCJL-02



Cage Style Tire Carrier

TCJL-02 uses a combination of tubing, boxed steel and internal bracing to accommodate up to a 37" tire and wheel combo. This carrier can be used with any rear bumper.

- Accommodates up to a 37" x 12.50 tire
- Fits any bolt pattern wheel
- Spring loaded pin system to make opening and closing the tire carrier easy
- Rigid mounting system w/internal bracing
- Accommodates the OEM back-up camera
- Accommodates factory 3rd brake light assembly

NOTE: Requires minor drilling for installation

TCJL-06

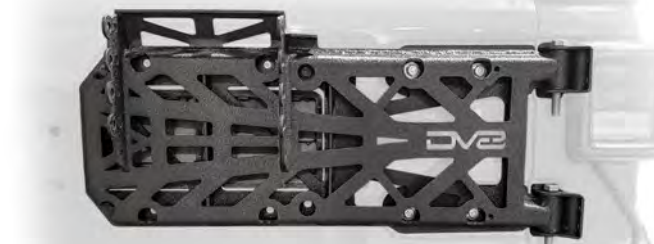


Bumper Mounted Tire Carrier

TCJL-06 is a bumper mounted tire carrier that can be added to the RBJL-01 or RBJL-06. The carrier attaches to the tailgate of the JL and operates just like the factory spare tire carrier but with the added support of being mounted to the frame.

- Accommodates up to a 37" tire and wheel combo
- Allows for adjustability of how high the spare is mounted
- Accommodates the factory backup camera, and has a highlift mount built in.
- Accommodates factory 3rd brake light assembly

TCJL-03



Hinge Mounted Tire Carrier

The DV8 Offroad TCJL-03 provides OEM style access to the rear of your 2018+ JL and can accommodate up to a 38" tire. It has been tested on some of the toughest trails in the world and hasn't let us down yet. It works by completely replacing the factory hinge with a stout hardened steel hinge for ultimate durability.

- Rubicon tested
- Relocates and protects OEM camera
- Retains OEM style access
- Accommodates factory 3rd brake light assembly

NEW TCJL-10

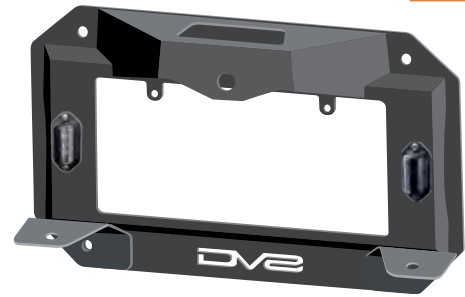


Interior Tire Carrier/Basket

This 2 Door JL Interior Storage rack/Tire Mount is great for any extended trips! The ability to store two layers of supplies in a cramped 2 door Wrangler can ease any long trip, on or offroad. If you don't need the extra storage, you can easily flip the rack and mount up to a 33" tire on the inside of the Jeep.

- 3/16" Thick Steel
- 100% Bolt-on Design
- Can be used with a hardtop

NEW TSJL-03



Tailgate Vent Cover

DV8 Offroad's TSJL-03 spare tire delete kit allows you to remove your spare tire on your JL for maximum visibility out the rear window. The TSJL-03 offers the ability to mount the factory back up camera along with the factory third brake light. Included with the kit is two light mounts so you can add additional lighting in the rear.

- Easy installation
- Auxiliary light mounts
- LED License plate lights

TSJL-02



Spare Tire Delete w/Camera Mount Kit

The DV8 Offroad TSJL-02 spare tire delete kit allows you to remove the spare tire from your Jeep JL and also provides a housing for the factory backup camera. This product completely changes the look of the Jeep while protecting and relocating the backup camera. It also allows you to legally relocate your license plate from the bumper and includes LED light to illuminate it.

JLRS-01



Rear Storage Security Cover

This rear locking storage offers security and protection when going topless. Made from 1/8" steel, our storage compartment offers access behind the rear seats by a small locking door and large open access from the rear of the Jeep.

This is designed for the 4-Door applications only and can be used with or without the factory hardtop.

- Gas shocks for lids
- 1/8" Steel
- Stainless Steel Hardware
- 100% Bolt-on application

JLSB-01



Speaker/Light Bracket

A universal frame mount that offers you the versatility to mount just about anything. From lights, to speakers, to hi-lifts, our mount offers a strong secure setup.

- Universal mounting application
- Multiple bolting positions
- 100% Bolt-on application



NEW RRJL-01



4 Door

Roof Rack

DV8 Offroad's 4 Door JL Roof Rack offers utility and ease. With a no drill design, our roof rack gives you the ability to put on or remove the roof rack in minutes.

Extending almost the full length of the JL, maximum storage is available. With a weight limit of 200lbs evenly distributed, you can toss all your camping gear that doesn't fit into the Jeep, on top!

- 1/8" Thick Steel
- Tie down Points on all Sides
- 100% Bolt-on design
- Noise Reduced Design



NEW RRJL-02



2 Door

Roof Rack

This Jeep JK 4 Door/JL 2 Door/ Gladiator Roof Rack offers utility and ease. With a no drill design, our roof rack gives you the ability to put on or remove the roof rack in minutes.

Extending almost the full length of the rain gutter, maximum storage is available. With a weight limit of 200lbs evenly distributed, you can toss all your camping gear that doesn't fit into the Jeep on top!

- 1/8" Thick Steel
- Tie down Points on all Sides
- 100% Bolt-on design
- Noise Reduced Design





TOP ITEM FDJL-01

FRONT

REAR

High Clearance Armor Fenders

Slim Design for max protection and clearance. Aluminum vents can be color matched to give your Jeep an overall custom look.

- 100% bolt on and requires no cutting or drilling
- Integrated LED turn signals
- Lightweight yet built tough
- Fender width: 7" front | 4.5" rear



FDJL-02

FRONT

REAR

High Clearance Slim Fenders

- Slim Design for max protection and clearance
- 100% bolt on and require no cutting or drilling
- Integrated LED turn signals
- Lightweight yet built tough
- Fender width: 7.3" front | 4.75" rear



FDJL-04

FRONT

REAR

High Clearance Full Flat Fenders

FDJL-04 Flat Fenders were designed to improve tire clearance and keep everything completely street legal when running oversize tires.

- Wide Design for max protection and coverage
- 100% bolt on requires no cutting or drilling
- Integrated LED turn signals
- Lightweight yet built tough
- Fender width: 12.75" front | 8.75" rear



FDJL-03

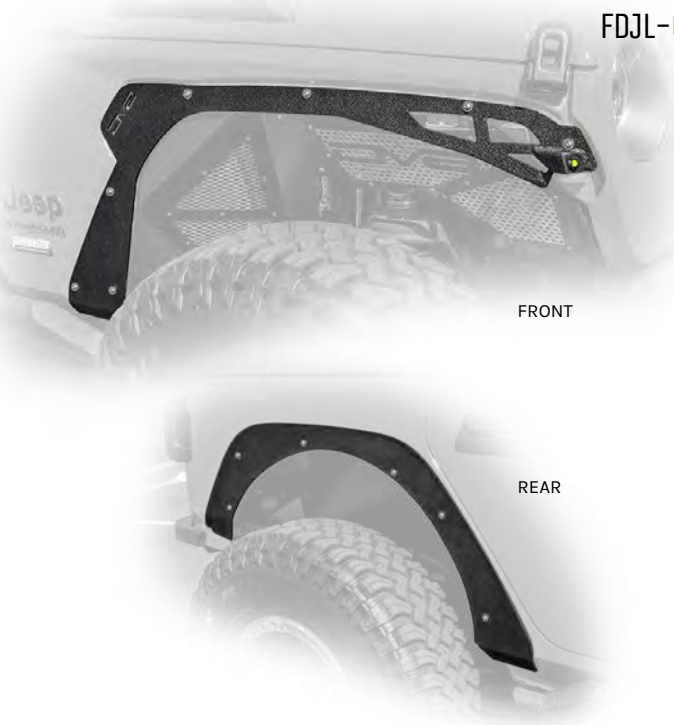
FRONT

REAR

Fender Delete Kit

The FDJL-03 fender delete kit was designed to maximize tire clearance and completely eliminate the factory fenders. Eliminating the fenders keeps the body of the Jeep further away from obstacles such as trees, rocks, and boulders and allows you to squeeze through tight spots that would be impossible to get through with a full width Jeep.

- Laser cut 3/16" steel
- Form fitting and textured powdercoat
- 100% bolt on design
- Includes LED Turn Signal



TOP ITEM FDJL-05



FRONT

REAR

Tube Fender Flares

DV8 Offroad Flat Fenders provide more tire clearance and more ability to flex. They come with internal bracing to ensure strength and durability.

Our fenders come in black and can be painted to match or left as is. These fenders line up perfectly with the JL body lines and installation is extremely simple with precision cut holes to match the factory fender holes. The fenders also come with our turn signal light, which replaces the factory signal.

- (4) Flat Fenders w/ thick tubing and rigid steel plating
- (4) Rubber guards to keep the fenders from rubbing on the Jeep's body
- Stainless steel mounting hardware
- Same width as OEM fenders
- Fender width: 9.75" front | 4.75" rear

TOP ITEM INFEND-03FR

Front/Raw aluminum



INFEND-03FB
Front/Black

Front Inner Fenders

- Protects the engine compartment from mud, dust, and debris
- Better airflow to keep your engine compartment cooler
- Mounts with the factory fenders and most aftermarket fenders
- Available in raw aluminum or black powder coating.

INFEND-03RR

Rear/Raw aluminum



INFEND-03RB
Rear/Black

Rear Inner Fenders

- Protects components while increasing tire clearance
- Mounts with the factory fenders and most aftermarket fenders
- Available in raw aluminum or black powder coating.



RDJL-01F

FRONT



RDJL-01R

REAR



Rock Doors

- Comes with perforated aluminum screens
- Screens can be painted to match Jeep
- Doorless visibility with added protection
- Limit straps to prevent door from swinging too far open
- Rattle preventing stopper integrated into the design
- Available for 2 door or 4 door models
- Comes with replacement mirrors

HDJL-01R

REAR



Half Doors

- Comes with perforated aluminum screens
- Screens can be painted to match Jeep
- OEM styling
- Doorless visibility with added protection
- Available for 2 door or 4 door models
- Comes with replacement mirrors

HDJL-01F

FRONT



MIRRORS





SRJL-02
4 door

Tubular Side Step/Slider

SRJL-02 sliders are a perfect combination of a step and slider for protection and ease when getting in the Jeep. Made from .095 wall 2" rolled steel tubing and are completely bolt on, no drilling required.

- High Clearance
- Slider/ Step without losing clearance
- Non Slip Gripping Step Design
- Easy Installation



SRJL-22
2 door

Tubular Rock Slider with Plated End Caps

SRJL-03 sliders are a trail tested and proven design. Made from .095 wall 2" rolled steel tubing and are completely bolt on, no drilling required.

- Maximum protection
- High Clearance
- Plated Ends
- Easy Installation
- Sliders utilize factory hardware



SRJL-03
4 door

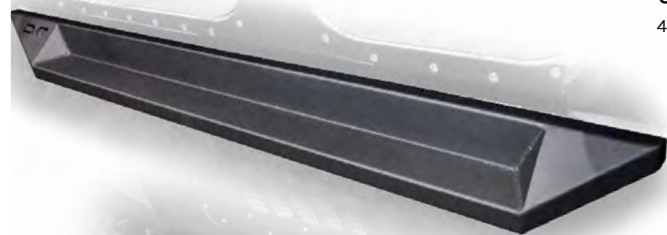


SRJL-23
2 door

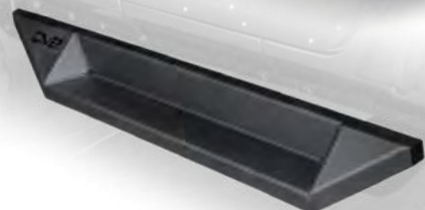
Plated Side Step/ Slider

SRJL-04 step sliders use a boxed in plated design that provides a rigid rock slider. The step will make struggling to get into your lifted JL a thing of the past all while improving the looks and functionality of the Jeep.

- Easy installation
- No modifications needed
- Easy Installation



SRJL-04
4 door



SRJL-24
2 door



SRJL-05
4 door

Rock Skins

SRJL-05 Rock Skins can be used with most JL step or slider and contour around either factory or aftermarket fenders. They are designed to add protection to the exposed body between the door and the bottom of the body.

- Made with 3/16" steel
- Attach securely using nutserts
- Offers protection for Rocker Panel

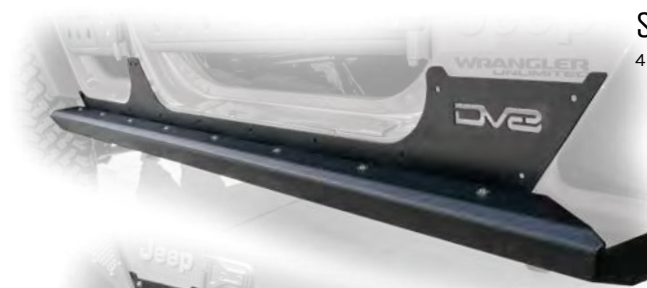


SRJL-25
2 door

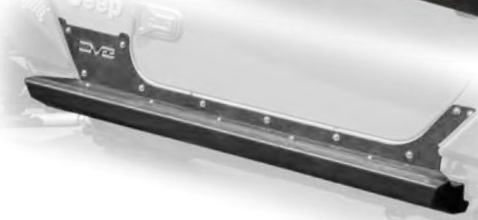
Rock Sliders

The most vulnerable areas on the body are the rocker panels. Sliders protect your rocker panel area while enabling you to slide over rocks and obstacles.

- Sliders use body mounts and rock skins for ultimate durability
- Attach with factory hardware and nutserts
- Great for Jeeps that will be used in extreme conditions regularly
- Body and Frame mounted design



SRJL-06
4 door



SRJL-26
2 door





SPJL-01

Swaybar Disconnect Skid Plate

- Protects the exposed sway bar disconnect and factory crash bar
- Cleans up the aesthetics when installing an aftermarket bumper
- Works with most DV8 Offroad front bumpers (see the DV8 website for a full list of compatible bumpers)
- Fits all trims of JL Jeep

NEW SPJL-04

2 Door

Skid Plate

- Bolt on undercarriage protection for your Jeep JL
- Protects the most vulnerable area of the undercarriage and drivetrain
- No drilling required
- Made of 3/16" steel
- Comes powdercoated black

NEW SPJL-06

4 Door

SPJL-11

DANA 44 Front Differential Skid Plate

- Bolt on front axle differential protection
- Protects the lowest hanging part of the axle
- Designed to deflect rock hits
- Comes powdercoated with DV8 textured finish
- Protects vital components of the differential

SPJL-10

DANA 44 Rear Differential Skid Plate

- Bolt on rear axle protection
- Protects differential and axle tubes
- Full protection for your rear axle
- Designed to deflect rock hits
- Comes powdercoated with DV8 textured finish
- Protects the axle yoke from rock hits
- Utilizes factory shock mounts

TOP ITEM LBJL-01

Over Windshield Light Bar Bracket

- Secure mounting of a 50" LED light bar over the windshield of the JL (DV8 P/N: BR50E300W3W)
- 51.5" mount to mount
- Lightweight and strong
- Space for wiring is provided
- Driver/Passenger Brackets and hardware included

LBJL-02

Dual Pod Light Lower A Pillar Mount

- Securely mount 4 LED pod lights on the JL (DV8 P/N: B3CE16W4W)
- Easy Bolt on install
- Comes powdercoated DV8 textured black
- Driver/Passenger Brackets and hardware included

LBJL-03

Over Hood 40" Light Bar Mount

- Securely mount a 40" LED light bar (DV8 P/N: BS40E110W5W)
- Gusseted design for sturdy mounting
- Comes powdercoated DV8 textured black
- Will not affect hood opening and closing
- Easy to wire and mount using factory hardware

TJLJ-01

Tail Light Guard

- Easy to install tail light guards
- Protect tail light from damage on the trail
- No drilling or modification of the light housing required
- Driver/Passenger Guards and hardware included

NOTE: Only works on non sensor tail lights (Halogen) Does not work with LED Lights



CMJL-01

Engine Bay Compressor Mount for ARB

This is the only mount on the market today that allows for an ARB twin compressor to be mounted inside the JL engine bay as it was meant to be! The mount comes with all hardware needed for install and is powdercoated standard DV8 black. It will work with either our inner fenders or with the OEM inner fenders.

- Mounts the compressor out of the way
- Easy to install and comes with all necessary hardware.

NOTE: will only work with 3.6L engines.



TTJL-01

Folding Trail Table

Constructed from solid steel and powdercoated for protection, the DV8 TTJL-01 is a convenient table that folds down from the tailgate. Whether you are doing a trail repair or just making lunch, this table just makes life easier.

- Rattle free design that can hold up to 100 lbs
- Bolts to factory mounting points

NOTE: Drilling through plastic tailgate applique is required



NEW HLCJL-01
w/Halo



LED JL Projector Headlights

The DV8 Offroad HLCJL-01 is the ultimate JL replacement headlight. This light is 9" wide (factory size) and is made of OEM quality materials inside and out. The light replicates the upgraded LED kit from Jeep for a fraction of the price. The lights come with everything necessary for install including wiring harnesses, ballasts and installation hardware.

- Plug and play installation
- Direct LED replacements
- Install just like OEM
- Bright white light output



BCABJL-01

Headlight Adapter w/Wiring

An adapter kit to fit 7" JK or TJ headlights onto a Jeep JL and Gladiator. Let's face it, there are a lot of really cool and inexpensive 7" headlights for older generation Jeeps. With this kit, you have everything you need to mount aftermarket headlights into your Jeep!

- Plug and play with harness adapters for wiring
- Will work with any 7" JK or adjustable TJ headlight similar to OEM



TOP ITEM HDMBJL-01

DV8 HOODS

Heat Dispersion Hood

Constructed from stamped steel offering added strength and reduced heat. This design provides much better air flow with its vented layout and allows engine heat to disperse through vents which helps in keeping the engine and overall compartment temps down resulting in all-around increased performance.

NOTE: Recommend professional installation including prep, fitting, seam sealer and painting for ultimate fitment. Always test fit before painting.



HDMBJL-TA

Rubicon Replica Hood

Constructed from stamped steel offering added strength and reduced weight. This design is meant as an upgrade for the standard JL Wrangler hood.

Our hoods come with an under hood insulation liner and are prepped with a rust inhibitor ready to be prepped, painted, and installed.

NOTE: Recommend professional installation including prep, fitting, seam sealer and painting for ultimate fitment. Always test fit before painting.



STJL-01

Hinge Mounted Steps

These hinge mounted steps for the JK/JL/JT allow easy access to the roof of your Jeep and flips up to be out of the way when not in use. Ball catches hold the step in place in the upward position, and it comes with special washers to keep the step from damaging the paint. Finally, a pedal style step that ensures you won't slip in mud sand or snow.

- Stainless steel hardware - Easy to mount
- Anti-slip step with ball Catch hinge
- Sold in pairs



STJL-02

Hinge Mounted Foot Pegs

These Pegs were designed to provide a stable point just outside of the door of your Jeep to kick a foot out and enjoy a doorless ride even more!

- Made from 3/16" Steel with lock In design
- Sold in pairs



GRJL-01



NEW GRJL-02



NEW SPJL-05D



NEW TBJL-01F



DV8 GRILLE

Replacement Grille **Black**

The DV8 Offroad GRJL-01 replacement grille adds a menacing look to the front end of your ride. With the JL's larger 9" headlights, the angry eye look has never been so mean.

- Replaces OEM grille
- Easy to paint and easy to install

LED Amber **Marker Lights**

DV8 Offroad's GRJL-02 amber marker lights are a perfect addition to the front of your Wrangler. Our ultra-bright LEDs offer the ability to be noticed in dark or dusty conditions. The GRJL-02 also gives your JL an aggressive prerunner look without cutting or drilling necessary. Utilizing the holes in the grille, our JL grille brackets aligns the lights perfectly without any hassle.

- (3) Amber ultra-bright LEDs / Wiring included
- Easy to Install

REAR SKID PLATE

Skid Plate **Diesel**

DV8 Offroad's SPJL-05D is designed specially for the 3.0 Diesel JL. With the factory exhaust and def system hanging low, this becomes a prime target for rock's when offroad. The SPJL-05D, made from 3/16" steel was engineered to protect these important components.

- 100% bolt on installation
- 3/16" Steel with reinforcement tube
- Sand texture powder coating

DV8 SUSPENSION

Adjustable **Track-Bar Front**

This Heavy Duty Adjustable Track Bar is perfect for any JL or Gladiator with up to a 4.5" lift. Our track bar is made from 1.5" .165 thick tubing. Designed to center the axle under the Jeep, our tack bar is a great compliment when raising your Jeep.

- 1.5", .165 High Grade Steel Tubing
- Heavy Duty Adjustable Rod End
- Black Powder Coat

NEW RR25JL-01



TOP ITEM RRBS2-01



NEW AHJP-02



NEW AHJP-01



2.5" **Lift Kit**

Simply put, the thing that makes our monotube shocks stand out from the crowd is their size. Having a thicker body allows us to put more fluid into the shock which in turn results in better performance for longer.

Internal bump stops protect your shocks and suspension at full flex. Finally, when a customer orders one of our lift kits we provide monotube shocks that are designed for that specific kit. The result is perfect harmony between ride quality and off road performance.

- 2" Diameter Shock Body
- Kit comes with dual rate springs
- Shock Valving is JL Specific

Bump **Stops**

DV8 Threaded Body 2.0 Bump Stop with 2.5" Stroke. These heavy duty bump stops install directly into the coil bucket and prevent the suspension from bottoming out through the last few inches of travel.

- Completely serviceable and rebuildable
- Locking Rings lock against each other for firm mounting
- Fully adjustable for different lift heights and tire sizes
- Sold in pairs

NOTE: Installs directly into the front coil bucket. To use on rear axle, additional hardware and custom mounting is required.

JK/JL **Bolt-on Hitch**

DV8 Offroad's AHJP-02 hitch offers you the ability to hookup and go. Built with 1/4" steel, our OEM style replacement hitch is a perfect addition. Utilizing the factory mounting location, our hitch is a super simple install that will have you being able to mount up your gear in no time.

- Satin black powder coating
- Flat four plug mount
- Easy installation

JK/JL **Bolt-on Hitch w/Lights**

Using the factory location, our 2" accessory hitch utilizes the need for a rear hitch as well as auxiliary lighting. Designed to work with all of DV8's bumpers, the AHJP-01 comes with (2) 2" spot LEDs. The LEDs are protected in the hitch.

- 2" Hitch using factory mounting location
- 2" LED's included
- Black Powder coated



TOP ITEM HTJLFB-B



Fast Back Hard Top

DV8 Off Road Hard Tops are built in the United States and use high quality seals, fiberglass, and advanced aerodynamics to produce the quietest tops on the market.

- Hand laid honeycomb reinforced fiberglass for added durability
- 31% tint DOT approved glass
- Military grade carpeted headliner for increased insulation and noise reduction
- UV stable GEL coat
- Quick release latching system
- Improved aerodynamic shape
- One piece targa design
- Defrost rear windows

Fast Back Hard Top Razor Series

DV8 Off Road Hard Tops are built in the United States and use high quality seals, fiberglass, and advanced aerodynamics to produce the quietest tops on the market. This DV8 top is a 2 piece design so the part over the front driver and passenger lifts off like a targa top.

- Hand laid honeycomb reinforced fiberglass for added durability
- 31% tint DOT approved glass
- Military grade carpeted headliner for increased insulation and noise reduction
- UV stable GEL coat
- Quick release latching system
- Improved aerodynamic shape
- One piece targa design
- Rear spoiler lip

HTJL02-B



HTJL-L

Hard Top Latch Closure Mechanism

The HTJL-L hard top closure mechanism is designed to replace the factory closure mechanisms from Jeep. This low cost alternative is great if you have a broken or loose latch on your OEM top and also fits onto aftermarket tops.

- Functions like stock
- Replaces worn out latches
- Bolts on directly
- Powdercoated



HTJL-H

Billet T-Handles for JL Hardtop

The HTJL-H kit is designed to replace the plastic OEM hardtop closure handles with strong billet aluminum handles. These handles are precision made by a CNC machine and anodized for a clean black finish. The kit comes with all hardware necessary to mount your new handles and each kit comes with 6 handles.

- Replace brittle OEM handles
- Made of high grade aluminum
- CNC precision made
- Anodized black finish
- Come with all hardware



HTJL-BR

OEM Style Hardtop Mounting Brackets

The DV8 Offroad HTJL-BR Mounting Bracket Set is used to mount a hardtop on a JL Wrangler that came from the factory with the soft top package. Most won't even know that they need this until they purchase an aftermarket or second hand hard top and try to install it on their Jeep! To solve this issue DV8 has developed an inexpensive solution in similar form to the OEM brackets which cost hundreds if purchased directly from Jeep.

- Allows JL owners to mount a hardtop
- Meant for Jeeps that came with a soft top
- Much less expensive than OEM alternatives
- Includes all hardware and brackets necessary

DVETM
OFFROAD



2007-18

JK PRODUCT
LINE



DV8'S
MOST POPULAR
JK TRAIL GEAR

FBSHTB-15
Stubby Width
Front Bumper



INFEND-01FB
Front/Black

Aluminum Inner
Fenders



HDMB07-02

Heat Dispersion Hood



2007-18
JK Jeep
Wranglers

- 3/16" & 1/4" cold rolled steel
- High clearance angles and raised corners
- Light tabs and Solid D-ring mounts w/ D-rings included
- Textured black powder coating
- Trail tested and proven designs
- Will accommodate up to a 12,500 lbs winch
- .095 wall tubing for better durability
- Fit all 2007-2018 JK Jeep Wranglers w/ no drilling required
- Easy installation, Hardware included
- When Stating - Accepts Factory Lights, this bumper accepts the 4 hole fog lights.



FBSHTB-01

Full Width front Bumper

- Accepts Factory Lights (not included)
- Winch Plate included



FBSHTB-07

Mid Width front Bumper

- Comes with integrated LED lights
- Recessed Winch Plate



FBSHTB-08

Mid Width front Bumper

- Comes with integrated LED lights
- Recessed Winch Plate



FBSHTB-10

Stubby Width front Bumper

- Accepts Factory Lights (not included)
- Accepts 10" light bar (DV8 P/N:B10CE60W3W - not included)
- Bolt on Winch Plate included



FBSHTB-11

Stubby Width front Bumper

- Comes with integrated LED lights
- Bolt on Winch Plate included



FBSHTB-12

Mid Width front Bumper

- Accepts Factory Lights (not included)
- Accepts 10" light bar (DV8 P/N:B10CE60W3W - not included)
- Recessed Winch Plate





FBSHTB-13

Stubby Width front Bumper

- Accepts Factory Lights (not included)
- Bolt on Winch Plate included



FBSHTB-18

Full Width front Bumper

- Accepts Factory Lights
- Bolt on Winch Plate included
- Accepts 20" light bar (DV8 P/N:BS20E100W5W - not included)
- Recessed Winch Plate
- Integrated Skid Plate



FBSHTB-14

Mid Width front Bumper

- Accepts Factory Lights (not included)
- Accepts 10" light bar (DV8 P/N:B10CE60W3W - not included)
- Recessed Winch Plate



FBSHTB-19

Mid Width front Bumper

- Accepts Factory Lights
- Bolt on Winch Plate included
- Accepts 20" light bar (DV8 P/N:BS20E100W5W - not included)
- Recessed Winch Plate
- Integrated Skid Plate



TOP ITEM

FBSHTB-15

Stubby Width front Bumper

- Accepts Factory Lights (not included)
- Bolt on Winch Plate included



FBSHTB-16

Stubby Width front Bumper

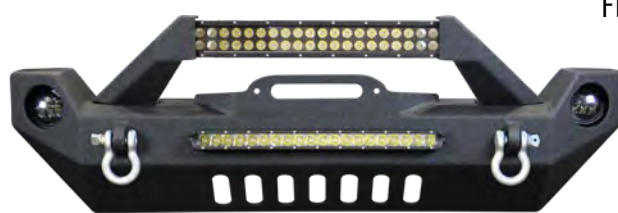
- Accepts Factory Lights (not included)
- Bolt on Winch Plate included
- Accepts 6" light bar (DV8 P/N:BS6E25W5W - not included)
- Recessed Winch Plate
- Integrated Skid Plate



FBSHTB-24

Stubby Width front Bumper

- Accepts 20" light bar (DV8 P/N:BS20E100W5W - not included)
- Recessed Winch Plate



FBSHTB-17

Mid Width front Bumper

- Accepts Factory Lights (not included)
- 20" single row integrated light bar (DV8 P/N:BS20E100W5W) not included
- 20" light bar required for use of stinger bar (DV8 P/N:BR20E120W3W)
- Integrated Skid Plate



FBSHTB-25

Stubby Width front Bumper

- Accepts Factory Lights (not included)
- Accepts 20" single row light bar - DV8 P/N:BS20E100W5W (not included)
- Bolt on Winch Plate included





2007-18 JK Jeep Wranglers

- 3/16" & 1/4" cold rolled steel
- High clearance high degree angles and raised corners
- Solid D-ring mounts w/rings included
- Textured black powder coating
- Hitch receivers
- Trail tested and proven designs
- All tire carriers will fit up to a 40" tire
- Tire carriers include a heavy duty dual tapered bearing style for easy access to rear door
- Easy installation, NO modifications needed, Hardware included

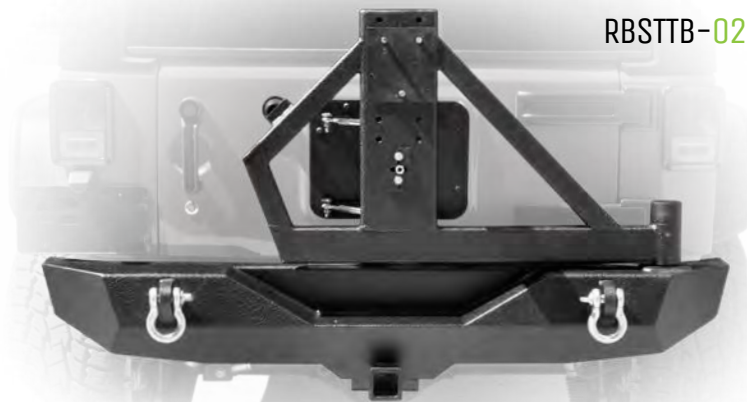


RBSTTB-01

Stubby Width Rear Bumper Tire Carrier

DV8 Offroad's RBSTTB-01 bumper and tire carrier combo is a must have for your Jeep. With the carrier mounted directly to the bumper, you can rest easy knowing the excess weight is off the factory door. The RBSTTB-01 bumper is made from 3/16" steel and comes with a 2" accessory hitch.

DV8 Offroad offers the RBSTTB-01 in either a bushing style carrier mount, or a dual taper bearing carrier mount (RBSTTB-01BR). The dual taper bearing offers a smoother motion for larger and heavier tires.



RBSTTB-02

Stubby Width Rear Bumper Tire Carrier

DV8 Offroad's RBSTTB-02 bumper and tire carrier combo is a must have for your Jeep. The RBSTTB-02 carrier attaches directly to the factory rear hatch, and easily opens as a single-action due to the dual taper bearing design. With the weight of the carrier mounted directly to the bumper, you can rest easy knowing the excess weight is off the factory door. The RBSTTB-02 bumper is made from 3/16" steel and comes with a 2" accessory hitch.



RBSTTB-04

Stubby Width Rear Bumper

- D-rings included
- 2" Hitch receiver



RBSTTB-06

Mid Width Rear Bumper

- D-rings included
- High clearance hitch receiver



RBSTTB-09

Full Width Rear Bumper

- D-rings included
- High clearance hitch receiver



RBSTTB-10

Full Width Rear Bumper

- D-rings included
- High clearance hitch receiver
- 2 flush mount pod lights included



RBSTTB-11

Full Width Rear Bumper

- D-rings included
- High clearance hitch receiver
- 2 flush mount pod lights included



RBSTTB-14

Mid Width Rear Bumper

- Fits factory receiver
- Accepts two, 2" pod lights (DV8 P/N:S2.1E10W10W - not included)

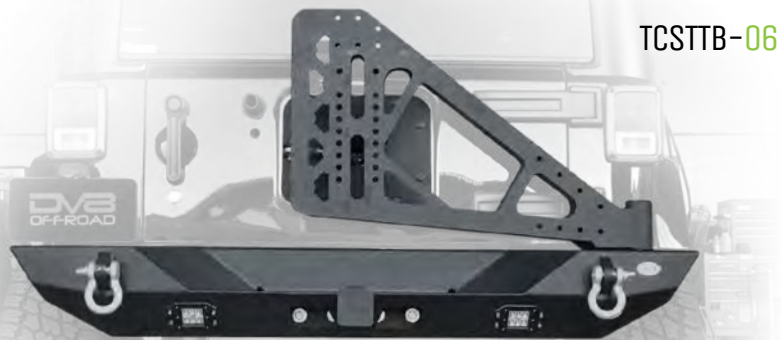


2007-18
JK Jeep
Wranglers

The DV8 body mounted tire carrier provides a high clearance tire mounting solution that is all about function. This carrier can be run with ANY aftermarket bumper for the JK. The Carrier holds the tire tighter to the body for better departure angles, and will fit any bolt pattern wheel. Includes a license plate relocation bracket and a cover for the old license plate mount.



TOP ITEM TCSTTB-01



TCSTTB-06



Body Mount Tire Carrier

- Bolt on Tire Carrier accepts up to a 42" Tire
- Will accept any bolt pattern
- High Quality Bushings for a quiet ride
- Removable plates make color matching easy
- Comes with License plate mount
- Some Drilling Required for Installation

Bumper Mount Tire Carrier

The TCSTTB-06 is a tire carrier that extends from the bumper (RBSTTB-10 & RBSTTB-11) to the Jeep's rear tailgate. Much like the DV8 RS-2, it opens along with the tailgate in one simple step. This carrier is designed to bolt onto your existing RBSTTB-10 or RBSTTB-11 bumper. It has a multitude of mounting points so you can mount your hi-lift jack, gas and water cans, or whatever else you like to bring with you.



NEW RRJL-02



NEW AHJP-02



NEW AHJP-01



TS01RJK



Roof Rack

This Jeep JK 4 Door/JL 2 Door/ Gladiator Roof Rack offers utility and ease. With a no drill design, our roof rack gives you the ability to put on or remove the roof rack in minutes.

Extending almost the full length of the rain gutter, maximum storage is available. With a weight limit of 200lbs evenly distributed, you can toss all your camping gear that doesn't fit into the Jeep on top!

- 1/8" Thick Steel
- Tie down Points on all Sides
- 100% Bolt-on design
- Noise Reduced Design

JK/JL Bolt-on Hitch

DV8 Offroad's AHJP-02 hitch offers you the ability to hookup and go. Built with 1/4" steel, our OEM style replacement hitch is a perfect addition. Utilizing the factory mounting location, our hitch is a super simple install that will have you being able to mount up your gear in no time.

- Satin black powder coating
- Flat four plug mount
- Easy installation

JK/JL Bolt-on Hitch w/Lights

Using the factory location, our 2" accessory hitch utilizes the need for a rear hitch as well as auxiliary lighting. Designed to work with all of DV8's bumpers, the AHJP-01 comes with (2) 2" spot LEDs. The LEDs are protected in the hitch.

- 2" Hitch using factory mounting location
- 2" LED's included
- Black Powder coated

Tramp Stamp

The DV8 Tramp Stamp fits over the raised vent area in the center of the tailgate. Used for those who have deleted or relocated the spare tire. CNC-laser cut from 3/16" steel and installs easily using the stock tire carrier mounting bolts.

Fits 2007-2018 Jeep Wranglers



FENDB-06



FRONT

REAR



DV8 Slim Fenders

DV8's Slim Fenders were designed for maximum clearance when traversing narrow passages that would rip off an ordinary width fender. They bolt on with no drilling required and feature a turn signal light that can integrate into the factory harness.

- Fender width: 7.75" front | 4.75" rear
- Slim design - Textured three stage powdercoat
- Solid steel construction - Light weight
- Bolt on installation



FENDB-09



FRONT

REAR



DV8 Armor Fenders

DV8 JK Armor Style Fenders are the ultimate bolt on armor fender. These fenders are easy to install and feature mesh aluminum accents, tight and functional design, and are 100% bolt on. Available for the 2 door or 4 door JK DV8 has run these fenders through countless trails and offroad miles and they truly rise to any offroad challenge.

- Fender width: 7.5" front | 4.75" rear
- Front and rear fenders
- Bolt on design - Textured powdercoat
- Slim design - Excellent tire clearance

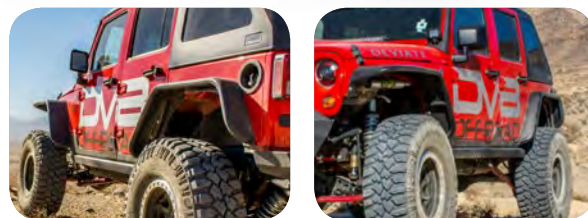


FENDB-02



FRONT

REAR



DV8 Flat Fenders

DV8 Flat Fenders line up perfectly with the JK body lines and installation is extremely simple with precision cut holes to match the factory fender holes. DV8 fenders also come with our exclusive turn signal mounting bracket that can be used to mount an after market turn signal light. Ditch the factory plastic fenders that leave your JK vulnerable to expensive body damage and upgrade to DV8 steel fenders.

- Fender width: 10.5" front | 5" rear
- Sand Textured 3 stage powdercoat
- Solid steel construction - Light weight
- Bolt on installation
- Minor drilling is required



FENDB-08



FRONT

REAR



DV8 Fender Deletes

DV8 JK fender delete kit was designed to maximize tire clearance and completely eliminate the factory fenders. Eliminating the fenders keeps the body of the Jeep further away from obstacles such as trees rocks and boulders and allows you to squeeze through tight spots that would be impossible to get through with a full width Jeep.

- Laser cut 3/16" steel
- Form fitting - Textured powdercoat
- Closes gaps left after removing fenders
- Requires cutting/drilling





**2007-18
JK Jeep
Wranglers**

DV8 Off Road Aluminum inner fenders are designed to reseal your engine compartment when using after market fenders, Clean up your inner fender, and provide better air flow where it counts. DV8 Inner fenders are available in raw aluminum or powder coated black.

- Material: Aluminum
- Raw or Powder Coated Black
- Easy installation, NO modifications needed, Hardware included



INFEND-02FB Front/Black

INFEND-02FR Front/Raw Aluminum

2nd Generation Inner Fender with more clearance, protection and venting. Available in black or raw aluminum. **NOTE: Comes with installation pop rivet tool.**



INFEND-01FBRL Front/Black

US Patent No. D785,522



DV8 Inner Fender with integrated Rock Lights and bluetooth control module



INFEND-01FR Front/Raw Aluminum

US Patent No. D785,522



INFEND-01RR Rear/Raw Aluminum

US Patent No. D785,522



TOP ITEM **INFEND-01FB** Front/Black

US Patent No. D785,522



INFEND-01RB Rear/Black

US Patent No. D785,522



RDSTTB-01R

RDSTTB-01F

REAR

FRONT



RDSTTB-01RMS

RDSTTB-01FMS

REAR

FRONT

DV8 Rock Doors

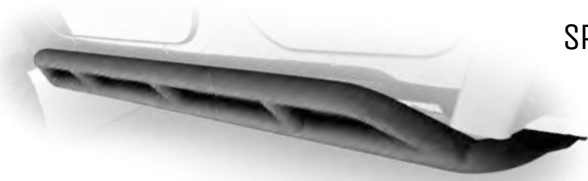
Rock Doors provide protection and security while still allowing for an open air doorless experience. These rock doors come with a removable and paintable aluminum mesh screen.

- Rock Doors available for 2007-2018 Jeep Wrangler (2 and 4 door models)
- Limit straps to prevent door from swinging too far open
- Fully plated design (more protection from brush and debris)
- Rattle preventing stopper integrated into the design
- High quality latches, Simple and easy to install, Plates can be removed to paint



2007-18
JK Jeep
Wranglers

- Made from 2" tubing and 3/16" cold rolled steel
- Trail tested and proven designs
- Two staged textured black powder coating
- Easy installation, NO modifications needed, Hardware included
- Available for 2 Door and 4 Door Jeep Wranglers 2007-2018



SRSOTB-01

4 Door Rock Slider

- Bolt on design no drilling required.
- Easy installation, utilizes factory hardware.



SRSOTB-03

2 Door Rock Slider

- Bolt on design no drilling required.
- Easy installation, utilizes factory hardware.



SRSOTB-04

4 Door Plated Rock Slider

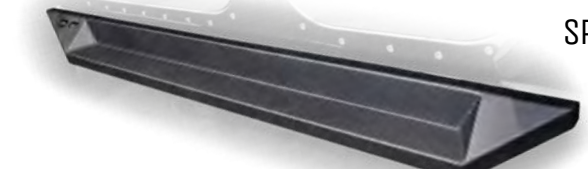
- Bolt on design no drilling required.
- Easy installation, utilizes factory hardware.



SRSOTB-06

2 & 4 Door Tube Steps

- Bolt on design no drilling required.
- Easy installation, utilizes factory hardware.



SRSOTB-10

4 Door Plated Steps

- Step makes for easy access.
- Bolt on design no drilling required.
- Easy installation, utilizes factory hardware.



SRSOTB-05

2 & 4 Door Rock Skins

- Can be used with all steps and sliders.

NOTE: Drilling Required for Installation



SRSOTB-12
2 DOOR

2 & 4 Door Rock Sliders

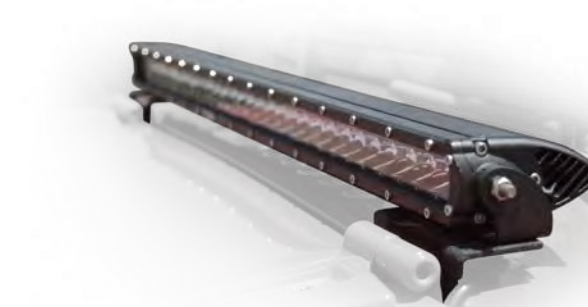
- Sliders use body mounts and rock skins for ultimate durability



SRSOTB-13
4 DOOR

- Attach with factory hardware and nutserts

NOTE: Drilling Required for Installation



LBSRTB-04

Hood Hinge Light Bar Mount

Mounts behind hood hinges for a low profile off road lighting solution. Will fit 30" light bars and longer with bottom mounts. Fits 2007-2018 Jeep Wranglers. Easy Installation with no drilling

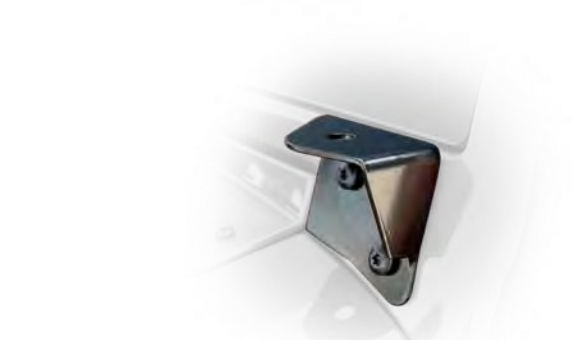
NOTE: See pages 103 & 105 for lighting options



LBSRTB-05

50" Light Bar Mount

Compatible with end mounted or bottom mounted 50" LED Light Bars (DV8 P/N: BR50E300W3W). Padded Mounts to protect painted surfaces. Easy Installation with no drilling required. Fits 2007-2018 Jeep Wranglers



LBSWTB-01

A-Pillar Pod Mount

Easy installation using factory windshield bracket bolts. Fits 2007-2018 Jeep Wranglers Recommended Pod Light (DV8 P/N: B3CE-16W4W)



TJJK-01

Folding Trail Table

Constructed from solid steel and powder-coated for protection the DV8 TJJK-01 is a convenient table that folds down from the tailgate. Whether you are doing a trail repair or just making lunch, this table just makes life easier.

- Fold up design makes storage convenient
- Can hold up to 100 lbs
- Rattle free design

NOTE: Drilling Required for Installation



TOP ITEM HDMB07-02



HDMB07-TA



GRAB07-04

DV8 HOODS

Heat Dispersion Hood

DV8 Off Road hoods provide better air flow and reduced weight with dual vented designs. DV8 hoods are constructed from stamped steel.

- Easy Bolt on installation
- Better Air flow for increased performance
- Reduce weight
- Stamped Steel DV8 Heat Dispersion hood.

NOTE: Recommend professional installation including prep, fitting, seam sealer and painting for ultimate fitment. Always test fit before painting.



10th Anniversary Replica Hood

Stamped Steel 10th Anniversary Edition vented replica hood.

- Allows for better engine cooling
- Works in conjunction with inner fenders (DV8 P/N: INFEND-01FB) for unrestricted air flow
- Aggressive design
- Comes ready to paint
- Comes with vents
- Fits 2007-2018 Jeep Wrangler

NOTE: Recommend professional installation including prep, fitting, seam sealer and painting for ultimate fitment. Always test fit before painting.

LED Grille

ABS Grille with steel mesh insert

Made from ABS plastic, this grille is thicker and more durable than your factory grille. Grille come with necessary seals and installation hardware. Grilles are available in textured black.

- ABS plastic
- Color - Textured black
- Easy installation, NO modifications needed, reuse factory hardware
- 20" Light Bar (DV8 P/N: BR20E120W3W or B20CE-120W3W) not included



2007-18
JK Jeep
Wranglers

DV8 Off Road Hard Tops are built in the United States and use high quality seals, fiberglass, and advanced aerodynamics to produce the quietest tops on the market.

- Hand laid honeycomb reinforced fiberglass for added durability
- 31% tint DOT approved glass
- Military grade carpeted headliner for increased insulation and noise reduction
- UV stable GEL coat - Extra thick
- Quick release latching system
- Improved aerodynamic shape, Two piece targa designs
- Made in the USA



HT07FB22

Ranger-JK
2 Door Fast Back Hard Top

- Fits 2 Door 07-18 JK Jeep Wranglers



HT96SB22

Ranger-TJ
TJ Hard Top

- Fits 1996-2006 JK Jeep Wranglers



HT07SB42

Ranger-4
4 Door Hard Top

- Fits 4 Door 07-18 JK Jeep Wranglers



HT07SB22

Ranger-2
2 Door Hard Top

- Fits 2 Door 07-18 JK Jeep Wranglers



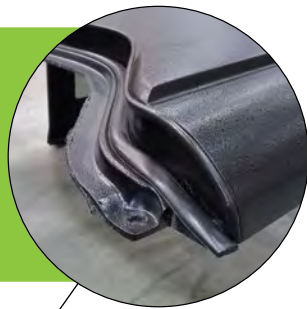
TOP ITEM HT07FB42

RANGER-FB
FAST BACK HARD TOP

- FITS 4 DOOR 07-18
JK JEEP WRANGLERS



DV8
HARDTOP
BREAKDOWN



1 piece Targa
Design with
high quality
automotive
grade seals



Aluminum
Machined Hinges



Mil Spec
Carpeted Headliner



High quality
automotive
grade seals
Extra thick UV
stable gel coating





RRJK-01



Rock Runner 3.5" Lift Kit

DV8 Rock Runner Kit comes with front & rear track bars 4 DV8 Nitro Monotube shocks, 4 dual rate coil springs, extended sway bar endlinks, and extended brake lines.

- 3.5" lift kit, clears 35" tires, easy bolt on installation
- Vehicle specific spring rates, Stock drive line compatible
- Front & rear track bars - heim jointed chromoly track bars
- 4 progressive rate coil springs
- Extended sway bar endlinks, Extended brake line brackets
- Includes four Monotube Rock Shocks

RR25JK-01



Rock Roller 2.5" Lift Kit

The DV8 off road rock roller 2.5" lift kit was designed for those who want to gain additional ground clearance and accommodate 35" tires without compromising the factory ride. We accomplished this with longer springs and all of the necessary components to correct the suspension geometry for the lift. Add our unique shock extension kit or a set of DV8 monotube shocks for increased articulation and a completely dialed in ride.

- 2.5" lift kit, clears 35" tires, easy bolt on installation
- Vehicle specific spring rates, Stock drive line compatible
- Front & rear track bar brackets
- Four patent pending DV8 progressive rate coil springs, Alignment washers
- Extended sway bar endlinks, Extended brake line brackets, Bump stop extensions

NITRO MONOTUBE
ROCK SHOCKS



2.0" Rock Shocks

Simply put, the thing that makes our monotube shocks stand out from the crowd is their size. Having a thicker body allows us to put more fluid into the shock which in turn results in better performance for longer.

Internal bump stops protect your shocks and suspension at full flex.

Finally, when a customer orders one of our lift kits we provide monotube shocks that are designed for that specific kit. The result is perfect harmony between ride quality and off road performance.

- 2" Diameter Shock Body
- Kit comes with four shocks
- Shock Valving is JK Specific

RR25JK-01SE



2.5" Shock Extension Kit

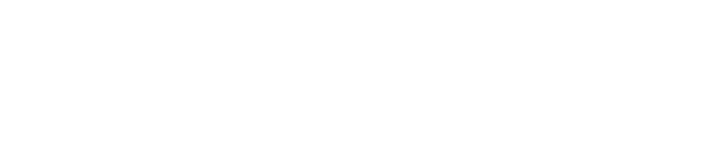
Add our shock extension kit! Properly positions factory length shocks to work with a 2.5" lift. Unique 1/4" brackets sandwich the factory mounts for more rigidity & less chance of bending compared to the competition. Hand milled billet aluminum rear extensions.

BUSHING STYLE
TRACK BARS

TBJK-01R REAR



TBJK-01F FRONT



Adjustable Track Bars

DV8 bushing style adjustable track bars.

- Fully adjustable for a perfectly aligned ride
- Over double the diameter of the factory track bars at 1.5" (Front) -- 1.25" (Rear)
- Thick .375 wall DOM Steel Tubing (Front) and .250 Wall DOM Steel Tubing (Rear) Zinc Plated and Powder coated for corrosion resistance.
- Maintains the correct geometry with lift for better handling
- Can accommodate from 1-6" of suspension lift
- Quiet ride high flex rubber bushings

NOTE: Not Compatible With Frame Mounted Trackbar drop brackets

TOP ITEM

RRBS2-01



Bump Stops

DV8 Threaded Body 2.0 Bump Stop with 2.5" Stroke. These heavy duty bump stops install directly into the coil bucket and prevent the suspension from bottoming out through the last few inches of travel.

- Completely serviceable and rebuildable
- Locking Rings lock against each other for firm mounting
- Fully adjustable for different lift heights and tire sizes
- Sold in pairs

NOTE: Installs directly into the front coil bucket. To use on rear axle, additional hardware and custom mounting is required.



DVB Off-Road truck bumpers are built with abuse in mind



TRUCK
ACCESSORY
PRODUCT LINE



VEHICLE	PART NO.	DESCRIPTION	FRONT	REAR
CHEVROLET	FBCS1-01	2007-2013	Chevy Silverado Front	
	FBCS1-04	2007-2013	Chevrolet Silverado Front 1500	
	RBCS1-01	2007-2013	Chevrolet Silverado Rear 1500	
	FBCS1-02	2014-2015	Chevrolet Silverado Front 1500	
	FBCS1-06	2016-2018	Chevrolet Silverado Front 1500	
	RBCS1-02	2016-2018	Chevrolet Silverado Rear 1500	
	FBCS2-01	2011-2014	Chevrolet Silverado Front 2500/3500	
	FBCS2-02	2011-2014	Chevrolet Silverado Front 2500/3500	
	RBCS2-01	2011-2014	Chevrolet Silverado Rear 2500/3500	
	FORD	FBFF1-06	2004-2008	Ford Front F-150
FBFF1-02		2009-2014	Ford Front F-150	
FBFF1-01		2009-2014	Ford Front F-150	
RBFF1-01		2009-2014	Ford Rear F-150	
FBFF1-07		2015-2017	Ford Front F-150	
FBFF1-08		2018+	Ford Front F-150	
RBFF1-02		2018+	Ford Rear F-150	
RBFF1-03		2015-2017	Ford Rear F-150	
FBFF2-01		2011-2016	Ford Front F-250/350/450	
RBFF2-01		2011-2016	Ford Rear F-250/350/450	
FBFF2-05		2008-2010	Ford Front F-250/350/450	
FBFF2-02		2011-2016	Ford Front F-250/350/450	
FBFF2-03		2017+	Ford Front F-250/350/450	
RBFF2-02		2017+	Ford Rear F-250/350/450	
DODGE RAM	FBDR1-01	2013-2018	Ram Front 1500	
	RBDR1-01	2010-2018	Ram Rear 1500	
	FBDR1-02	2013-2018	Ram Front 1500	
	FBDR1-05	2019+	Ram Front 1500	
	FBDR2-03	2006-2009	Dodge Ram Front 2500/3500	
	FBDR2-02	2010-2018	Ram Front 2500/3500	
	FBDR2-04	2010-2018	Ram Front 2500/3500	
	FBDR2-05	2019+	Ram Front 2500/3500	
	RBDR2-01	2010-2018	Ram Rear 2500/3500	
	RBDR2-03	2019+	Ram Front 2500/3500	

TOYOTA	FBTT2-02	2007-2013	Toyota Tundra Front
	FBTT2-01	2014-2019	Toyota Tundra Front
	FBTT2-03	2007-2013	Toyota Tundra Front
	RBTT2-01	2014-2019	Toyota Tundra Rear
	RBTT2-02	2007-2013	Toyota Tundra Rear
	FBTF3-01	2016+	Toyota 4 Runner Front
	FBTT1-01	2005-2015	Toyota Tacoma Front
	FBTT1-02	2005-2015	Toyota Tacoma Front
	RBTT1-01	2005-2015	Toyota Tacoma Rear
	FBTT1-03	2016+	Toyota Tacoma Front
GMC	FBGC-01	2015-2020	GMC Canyon Front
	FBGS1-02	2007-2013	GMC Sierra Front
	RBGC-01	2015-2020	GMC Canyon/Colorado Front
DV8 Baja Style Truck Bumpers			
CHEVROLET	FBCS1-03	2014-2018	Chevrolet Silverado 1500 Front Baja Style
FORD	FBFF1-04	2009-2014	Ford F-150 Front Baja Style
	FBFF1-03	2015-2017	Ford F-150 Front Baja Style
LEXUS	FBGX-01	2014-2020	Lexus GX Front

DV8'S MOST POPULAR TRUCK BUMPERS

FBDR2-04 RAM Front Bumper - 2500/3500 / 2010-2018

FBTT1-03 Toyota Front Bumper - Tacoma 2016+

FBTT1-05 Toyota Front Bumper - Tacoma 2016+



FBCS1-01

Silverado Front Bumper

- 1500 / 2007-2013
- Accepts four 3.5" round LED lights (DV8 P/N: R3.5E16W3W) (not included)
- 3 piece design



FBCS1-04

Silverado Front Bumper

- 1500 / 2007-2013
- Four flush mount LEDs (included)
- 3 piece design



FBCS1-02

Silverado Front Bumper

- 1500 / 2014-2015
- Four flush mount LEDs (included)
- 3 piece design



FBCS1-03

Silverado Front Bumper

- 1500 / 2014-2018
- 40" radius LED light bar (included)
- 3 piece design



FBCS2-01

Silverado Front Bumper

- 2500/3500 / 2011-2014
- Accepts four 3.5" round LED lights (DV8 P/N: R3.5E16W3W) (not included)
- 3 piece design



FBCS2-02

Silverado Front Bumper

- 2500/3500 / 2011-2014
- Two flush mount LEDs (included)
- 3 piece design



FBCS1-06

Silverado Front Bumper

- 1500 / 2016-2018
- Two 3" cube lights (DV8 P/N: B3CE-16W4W) (not included)
- 3 piece design



RBCS1-01

REAR BUMPER

Silverado Rear Bumper

- 1500 / 2007-2013
- Accepts two 3.5" round LED lights (DV8 P/N: R3.5E16W3W) (not included)



RBCS1-02

Silverado Rear Bumper

- 1500 / 2016-2018
- Two flush mount LEDs (included)



RBCS2-01

Silverado Rear Bumper

- 2500 / 2011-2014
- Accepts two 3.5" round LED lights (DV8 P/N: R3.5E16W3W) (not included)





FBGC-01

GMC Center Mount Front Bumper

- Canyon 2015+
- Bolt On With No Cutting Necessary
- Easy To Install
- Optional SPGC-01 Skid Plate Adds Even More Protection (Sold Separately)
- Rugged Look With OEM Lines



RBGC-01

GMC Rear Bumper

- Canyon/Colorado 2015+
- Two 3" flush mount lights LEDs (included)
- High clearance design



SPGC-01

GMC Center Mount Front Bumper Skid Plate

- Canyon 2015+
- Made Of 3/16 Steel
- Bolt On With No Cutting Necessary
- Easy to install

NOTE: Can be mounted with FBGC-01 only



FBGS1-02

GMC Front Bumper

- Sierra 2007-2013
- Four flush mount LEDs (included)
- 3 piece design



FBFF1-06

Ford Front Bumper

- F 150 / 2004-2008
- Four flush mount LEDs (included)
- 3 piece design



FBFF1-01

Ford Front Bumper

- F 150 / 2009-2014
- Accepts four 3.5" round LED lights (DVB P/N: R3.5E16W3W) (not included)
- 3 piece design



FBFF1-04

Ford Front Bumper

- F 150 / 2009-2014
- 40" radius LED light bar (included)

NOTE: is not compatible with cross member extension or control arm drop bracket style lift kits.



FBFF1-02

Ford Front Bumper

- F 150 / 2009-2014
- Four flush mount LEDs (included)
- 3 piece design



FBFF1-03

Ford Front Bumper

- F 150 / 2015-2017
- 40" radius LED light bar (included)

NOTE: is not compatible with cross member extension or control arm drop bracket style lift kits.



FBFF1-07

Ford Front Bumper

- F 150 / 2015-2017
- 3 piece design



FBFF1-08

Ford Front Bumper

- F 150 / 2018+
- Accepts two 3" cube lights (DV8 P/N: B3CE16W4W) (not included)
- 3 piece design



FBFF2-01

Ford Front Bumper

- F 250/350 / 2011-2016
- Accepts four 3.5" round LED lights (DV8 P/N: R3.5E16W3W) (not included)
- 3 piece design



FBFF2-02

Ford Front Bumper

- F 250/350 / 2011-2016
- Four flush mount LEDs (included)
- 3 piece design



TOP ITEM FBFF2-03

Ford Front Bumper

- F 250/350 / 2017+
- Accepts two 3" cube lights (DV8 P/N: B3CE-16W4W) (not included) (10" single row light bar DV8 P/N: BS10E50W5W, not included)
- 3 piece design



FBFF2-05

Ford Front Bumper

- F 250/350 / 2008-10
- Four flush mount LEDs (included)
- 3 piece design



RBFF1-01

REAR BUMPER

Ford Rear Bumper

- F 150 / 2009-2014
- Accepts two 3.5" round LED lights (DV8 P/N: R3.5E16W3W) (not included)



RBFF1-02

Ford Rear Bumper

- F 150 / 2018+
- Two flush mount LEDs (included)



RBFF1-03

Ford Rear Bumper

- F 150 / 2015-2017
- Two flush mount LEDs (included)



RBFF2-02

F 250 Ford Rear Bumper

- F 250/350 / 2017+
- Two flush mount LEDs (included)



RBFF2-01

Ford Rear Bumper

- F 250/350 / 2011-2016
- Accepts two 3.5" round LED lights (DV8 P/N: R3.5E16W3W) (not included)



FBFF2-BR Adaptive Cruise Control Bracket - F 250/350 / 2017-2020



The DV8 FBFF2-BR Adaptive Cruise Relocation Bracket can be used with any aftermarket bumper for your 2017+ F-250 or F-350. It moves the Adaptive cruise sensor up into the grille so that it is still operational and the adjustable design allows you to tune it in just right for your truck.

- Keeps use of OEM Adaptive Cruise Control, Attaches inside the grille
- Textured Powdercoat

NOTE: DV8 assumes no responsibility for improperly installed brackets



FBDR1-01

RAM Front Bumper

- 1500 / 2013-2018
- Accepts four 3.5" round LED lights (DV8 P/N: R3.5E16W3W) (not included)
- 3 piece design



FBDR1-02

RAM Front Bumper

- 1500 / 2013-2018
- Four flush mount LEDs (included)
- 3 piece design



FBDR1-05

RAM Front Bumper

- 1500 / 2019+
- Accepts two 3" cube lights (DV8 P/N: B3CE16W4W) (not included)
- 3 piece design

NOTE: Not compatible with Rebel



FBDR2-03

Dodge Front Bumper

- Ram 2500/3500 / 2006-2009
- Four flush mount LEDs (included)
- 3 piece design



FBDR2-02

RAM Front Bumper

- 2500/3500 / 2010-2018
- Four flush mount LEDs (included)
- 3 piece design



TOP ITEM FBDR2-04

RAM Front Bumper

- 2500/3500 / 2010-2018
- Accepts four 3" cube lights (DV8 P/N: B3CE16W4W) (not included)
- 3 piece design



NEW FBDR2-05

RAM Front Bumper

- 2500/3500 / 2019+
- Two flush mount LEDs (included)
- 3 piece design



RBDR1-01

RAM Rear Bumper

- 1500 / 2013-2018
- Accepts two 3.5" round LED lights (DV8 P/N: R3.5E16W3W) (not included)



RBDR2-01

RAM Rear Bumper

- 2500/3500 / 2010-2018
- Two flush mount LEDs (included)



NEW RBDR2-03

RAM Rear Bumper

- 2500/3500 / 2019+
- Two flush mount LEDs (included)



RRDR2-01

RAM Chase Rack

- 1500/2500/3500 / 2010-2018
- Two 3" cube lights (included)
- Also accepts (DV8 P/N: BS10E50W5W) (not included) (DV8 P/N: BS50E250W5W) (not included)



FBTT1-01

Toyota Front Bumper

- Tacoma 2005-2015
- Accepts two 3.5" round LED lights (DV8 P/N: R3.5E16W3W) (not included)
- 3 piece design



FBTT1-02

Toyota Front Bumper

- Tacoma 2005-2015
- Accepts four 3.5" round LED lights (DV8 P/N: R3.5E16W3W) (not included)
- 3 piece design



TOP ITEM FBTT1-03

Toyota Front Bumper

- Tacoma 2016+
- Accepts two 3" cube lights (DV8 P/N: B3CE16W4W) (not included)
- Accepts 30" single row light bar (DV8 P/N: BS30E150W5W) (not included)
- 3 piece design



TOP ITEM FBTT1-05

Toyota Front Bumper

- Tacoma 2016+
- Accepts 20" single row light bar (DV8 P/N: BS20E100W5W) (not included)



NEW FBTF3-01

Toyota 4 Runner Front Bumper

- 4 Runner 2014+
- Accepts 20" dual row light bar (DV8 P/N: BR20E120W3W) (not included)



RBTT1-01

REAR BUMPER

Toyota Rear Bumper

- Tacoma 2005-2015
- Two flush mount LEDs (included)



RBTT1-03

Toyota Rear Bumper

- Tacoma 2016+
- Two flush mount LEDs (included)



RBTT1-03ST

Toyota Rear Bumper Step Bolt on Step

- Tacoma 2016+

TUNDRA



FBTT2-01

Toyota Front Bumper

- Tundra 2014-2019
- Accepts four 3.5" round LED lights (DV8 P/N: R3.5E16W3W) (not included)
- 3 piece design



FBTT2-02

Toyota Front Bumper

- Tundra 2007-2013
- Four flush mount LEDs (included)
- 3 piece design



FBTT2-03

Toyota Front Bumper

- Tundra 2007-2013
- 3 piece design





RBTT2-01



RBTT2-02



TOP ITEM SPTT1-01



NEW RRUN-01

REAR BUMPER

Toyota Rear Bumper

- Tundra 2014-2019
- Accepts Two 3.5" round LED lights (DV8 P/N: R3.5E16W3W) (not included)



Toyota Rear Bumper

- Tundra 2007-2013
- Two 3" round LED lights (included)

Toyota Skid Plate

- Tacoma 2016+

The DV8 Offroad SPTT1-01 was designed for ultimate protection for your front end drive train and engine undercarriage. These bolt directly to the frame and utilize the frame and body mounts to add rigidity and reduce deflection to near zero. These plates help to slide off of obstacles rather than getting hung up. Install is simple and 100% bolt on so the sliders can be removed for touch up or recoating

Toyota Bed Rack

- Tacoma 2016+

Designed for the long haul. The 8" tall half-cab height rack was built to allow you to mount more than just a tent. Included in the kit is 2 Rotopax mounts as well as Hi Lift mounts. The adjustable front and back halves allow for the best fitment with your setup.

- 3/16" Cross Bars
- 5" single row light mount
- Rotopax and Hi-Lift mounts included
- Sand texture powder coating



NEW TCTT2-01



NEW RRTT1-03



TOP ITEM RRTT1-01

Toyota Stand Up Spair Tire Mount

The New 2007-2020 Tundra Universal Tire Mount offers the ability to mount your over-sized wheel and tire up and out of harms way. Our system gives you the ability to mount on either the driver side or passenger side or even two at once for the Baja truck style.

- Tundra 2007+
- Made from 3/16" Steel
- Universal Design/Mounts Any Tire Size
- 100% Bolt-on Design

NOTE: Uses Factory Bed Rails

Toyota Chase Rack

- Tacoma 2016+
- Two 3" cube lights (DV8 P/N: B3CE-16W4W) (not included)
- Also accepts (10" light bar DV8 P/N: BS10E50W5W) (not included)
- (50" light bar DV8 P/N: BS50E250W5W) (not included)

Toyota Roof Rack

- Tacoma 2016+
- Fits 40" light bar (BS40E110W5W) (not included)
- Also four 6" single row light bar (BS6E30W5W) (not included)
- Weight Capacity: 150lbs

LEXUS GX



NEW FBGX-01

Lexus GX Front Bumper

DV8 Offroad's FBGX-01 is designed for the offroad GX enthusiast. With protection and clearance at the forefront of our design, our bumper offers a sleek lines reminiscent of the factory styling. Our laser cut honeycomb grille offers your winch protection without interrupting airflow to the engine. Included is a 1/4" skid plate and availability to mount your factory turn signals and parking sensors. Our FBGX-01 was built for offroad capability, without compromising your Lexus styling.

- 2014-2020
- Integrated Skid plate
- 3-piece design
- Sand powder coating



NEW SRGX-01

Lexus GX Rock Slider

DV8 Offroad's SRGX-01 sliders are a must to shield your GX460. Utilizing multiple body and frame mounting points, our sliders were built to take a beating. Made from .250 wall tubing, and 3/16" steel, you can sure that they will take whatever is shoved at them. With a two-piece design, the top plate can be removed and customized, or simply used as a step for the top of the slider.

- .250 wall tubing / 3/16" steel mounting
- Top step plates
- Sand powder coating

D-JP-190001-K

JK HOOD HOLD DOWNS

DV8's billet aluminum turnbuckle and stainless steel heim joint hold downs. The quick-release push pin provides easy access to opening your hood and won't be lost thanks to the attached, stainless steel lanyard.

D-JL-190001-K **JL/JT HOLD DOWNS**

D-JP-190021-K **TJ HOLD DOWNS**



D-JP-190001/21

**JK HOOD HOLD DOWN
TURNBUCKLES**

DV8's Hood Hold Downs (in standard and lockable versions) can be upgraded with an optional black turnbuckle to replace the standard silver color.



D-FIREX-MNT-DOR
Black

**QUICK RELEASE FIRE
EXTINGUISHER MOUNT**

NHRA-approved, this quick release fire extinguisher mount is Baja-proven! It features CNC-machined 6061-T6 billet aluminum construction with a red, anodized, quick release pull knob. It can be installed in just about any location.

D-FIREX-MNT-S-DOR
Silver



D-JP-190002-BK

JK BILLET ANTENNA BLACK

The 8" billet aluminum antenna are machined from 6061-T6 material for added strength and style. Also available in silver.



NEW **D-JP-JKBLJNT-01**

**JK DV8 ATOMIC GREEN
DANA 44/30 BALL
JOINT KIT**

Designed for rugged offroad use. DV8 uses SAE4140 chromoly steel studs and SAE1045 steel housings to make one of the toughest ball joints on the market.

These ball joints are also greaseable which allows for standard maintenance and increased longevity. The grooves on the side of the housing are closer together resulting in superior resistance to turning that can occur. Comes with front and rear joints.

D-JL-180014-STR2

JL/JT FRONT SILL PLATES 2 or 4 DOOR

These DV8 Offroad sill plates are designed to protect the vulnerable door jamb of your Jeep JL or Gladiator where you enter and exit the vehicle. They are made of the highest quality CNC billet aluminum and are guaranteed to protect your Wrangler. These sill plates are thicker and stronger than any of the competition and come with everything needed for install.



D-JL-180014-STR4

4 Door rear sill plates





TOP ITEM

HOOD ACCESSORIES

D-JP-190001-K

JK HOOD HOLD DOWNS

DV8's billet aluminum turnbuckle and stainless steel heim joint hold downs. The quick-release push pin provides easy access to opening your hood and won't be lost thanks to the attached, stainless steel lanyard.



D-JP-190001-LK

JK LOCKING HOOD HOLD DOWNS

DV8's billet aluminum turnbuckle and stainless steel heim joint hold downs. The locking pin provides security, unwanted theft, and won't be lost thanks to the attached, stainless steel lanyard.



D-JP-190001-LKCNV

JK LOCKING HOOD PIN UPGRADE

For Customers that already own the DV8 Hood Hold Downs, but would like to upgrade to a lockable version, this is an easy install upgrade.



D-JP-190011-K

JK ROCKLAW™ HOOD CATCH SYSTEM

DV8's patented RockLaw™ Hood Catch System are made from a rigid die-cast which eliminates the flutter. They are height-adjustable to allow for a precise tension. Comes with high-quality stainless steel mounting hardware.



D-JP-190011-K1

JK ALUMINUM INSERT FOR ROCKLAW™ HOOD CATCH SYSTEM

The stick-on aluminum inserts for the DV8 RockLaw™ system.



D-JP-190022

JK HOOD ISOLATORS

Great replacement for the stock hood isolator in case you lost it or it deteriorated over time.



D-JP-190001/21

JK HOOD HOLD DOWN TURNBUCKLES

DV8's Hood Hold Downs (in standard and lockable versions) can be upgraded with an optional black turnbuckle to replace the standard silver color.

BEZELS

D-JP-180000-AL

JK AC VENT BEZEL TRIM 4 PIECE SET

This set of (4) bezels are machined-aluminum and easily install over the original plastic trim with an adhesive mount. A quick and easy way to add a more refined finish to your Jeep's interior.



D-JP-180001-AL

JK GLOVE BOX HANDLE COVER

Made from stamped-aluminum and designed to fit over the existing glove box handle, this is a quick way to add a little flash to your Jeep's interior.



D-JP-180004-BL

JK CONSOLE SHIFT BEZEL A/T

Made from machined-aluminum and easily install over the original plastic trim with an adhesive mount.



D-JP-180005-BL

JK CUP HOLDER BEZEL

Machined from 6061-T6 billet aluminum, this bezel is designed to replace the plastic, original piece. A nice complement to the shifter bezel, vent bezels and glove box handle cover for your Jeep's interior.



D-JP-180007-BL

JK PARKING BRAKE BEZEL

Machined from 6061-T6 billet aluminum, this bezel is designed to replace the plastic, original piece. A nice complement to the cup holder, shifter bezel, vent bezels and glove box handle cover for your Jeep's interior.



D-JP-180009-BK

JK EMERGENCY BRAKE HANDLE COVER BLACK

Made from 6061-T6 billet aluminum, these handle covers have a cross pattern design (for better grip) that is anodized. Also available in silver.



D-JP-180009-BL

JK EMERGENCY BRAKE HANDLE COVER SILVER



D-JP-180026-BL

JK BILLET PEDAL COVERS, MANUAL 3 PC

Our grooved, billet aluminum pedal covers will help keep your shoes from sliding off the pedals especially when you're putting your foot into it (more gas, less brake!)



D-JP-181109-G

JK EMERGENCY BRAKE HANDLE COVER GREY

Made from ABS plastic and embossed with 'Since 1941' (the birth year of Jeep), it features an easy, slip-on installation. Also available in silver.



D-JP-181109-S

JK EMERGENCY BRAKE HANDLE COVER SILVER

Made from ABS plastic and embossed with 'Since 1941' (the birth year of Jeep), it features an easy, slip-on installation. Also available in grey.



D-JP-1812004-AL

JK SHIFTER PLATE AUTOMATIC

Brushed aluminum and easy, adhesive tape installation, these add a nice pop to the Jeep's interior and nicely complement the vent bezel trim, cup holder bezels and climate control knobs.



D-JP-190032

JK DOOR OR HOOD HINGE COVERS SOLD IN PAIRS

These JK Door / Hood Hinge Covers were designed to match the same style of the 'picatinny' rail system that DV8 offers for Hoods, A-pillars and Roof Mounts. They perform as tough as their mil-spec look.

NOTE: Not Picatinny mountable



CAPS

D-JP-120001-BL

JK POWER STEERING CAP

Machined from 6061-T6 billet aluminum with a brushed & textured surface and clear anodized finish, these caps are the perfect dress-up accessory for showing off what's under your Jeep's hood.



D-JP-120004-BL

JK 3.8L OIL CAPP

Machined from 6061-T6 billet aluminum with a brushed & textured surface and clear anodized finish, these caps are the perfect dress-up accessory for showing off what's under your Jeep's hood.



D-JP-120005-BL

JK WASHER FLUID CAP

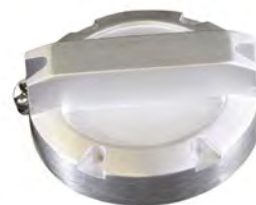
Machined from 6061-T6 billet aluminum with a brushed & textured surface and clear anodized finish, these caps are the perfect dress-up accessory for showing off what's under your Jeep's hood.



D-JP-120006-BL

JK COOLANT RESERVOIR CAP

Machined from 6061-T6 billet aluminum with a brushed & textured surface and clear anodized finish, these caps are the perfect dress-up accessory for showing off what's under your Jeep's hood.



D-JP-121204-BL

JK TWIST ON BILLET OIL CAP

Machined from 6061-T6 billet aluminum with a brushed & textured surface and clear anodized finish, these caps are the perfect dress-up accessory for showing off what's under your Jeep's hood.



D-JP-190005-BL

JK BILLET FUEL CAP

DV8 Off Road's Billet Fuel Cap is an easy way to secure access to your fuel with a lockable cap, and the billet finish looks great! Designed to fit the 2001-18 Jeep TJ/JK

D-JP-190005-BLK

JK BILLET FUEL CAP BLACK

DV8's black, billet lockable gas cap is designed to fit the 2001-18 Jeep TJ/JK

ANTENNA

D-JP-190002-BK

JK BILLET ANTENNA BLACK

The 8" billet aluminum antenna are machined from 6061-T6 material for added strength and style. Also available in silver.

MOUNT/BRACKET

D-JP-181110-A

JK FIRE EXTINGUISHER / FLASHLIGHT FLOOR MOUNT BRACKET KIT

DV8's Fire Extinguisher floor mount bracket allows you to quickly reach your flashlight or fire extinguisher at the base of the driver's (or passenger's) seat.

COWLS

D-JP-190003-A

JK COWL COVERS BLACK

Looking to cover the Jeep JK's 'mirror dent'? These black cowl covers (which can be painted to match your Jeep), provide a nice accent and install easily with stainless steel mounting screws and 3M VHB adhesive.

FUEL DOORS

D-JP-190004-BLK

JK FUEL DOOR ASSEMBLY ALL BLACK

The black, billet aluminum fuel door assembly features a magnetic closure and adds a more refined look to your Jeep's stock fuel filler space.

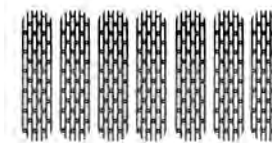


GRILLE ACCESSORIES

D-JP-190008-BLACK

JK GRILLE INSERTS BLACK

Our Jeep Grille Inserts are made from solid, billet aluminum so bugs will really know what hit them. Comes with the necessary hardware and installation instructions and is also available in Brushed and Polished finishes.



D-JP-190008-BRUSH

JK GRILLE INSERTS BRUSHED

D-JP-190008-POLSH

JK GRILLE INSERTS POLISHED



D-JP-190010-BK

JK MESH GRILLE BLACK

The Jeep JK Mesh Grille installs easily as a single unit and is a great way to dress up the front end of your Jeep and helps keep the bugs out of its teeth. Also available in chromed stainless steel.

TIE DOWNS

D-JP-181115-A

JK CARGO TIE DOWN SYSTEM

This tie down system is designed to allow you to choose any combination of straps, tethers or cargo nets to secure your load.



HANDLES & INSERTS

D-JP-180002-BL

JK INTERIOR PASSENGER GRAB HANDLE

Machined from solid billet aluminum and complete with mounting hardware, this passenger grab bar is an eye-catcher and a great way to complete the interior trim upgrade inside of your Jeep.



D-JP-190015-AL-3

JK ALUMINUM DOOR HANDLE INSERTS 2 DOOR & TAILGATE

DV8's best selling JK handle door inserts are made of high-quality stainless steel with screw-in installation. 2-door version gets three handles (one for the rear gate!) 4-door version gets five handles (one for the rear gate!)



D-JP-190015-AL-5

JK ALUMINUM INSERTS 4 DOOR

D-JP-190015-BK-3

JK ALUMINUM INSERTS 2 DOOR BLACK



D-JP-190015-BK-5

JK ALUMINUM INSERTS 4 DOOR BLACK

D-JP-190015-TT-3

JK ALUMINUM INSERTS 2 DOOR BLACK



D-JP-190015-TT-5

JK ALUMINUM INSERTS 4 DOOR BLACK



D-JP-190026-AL-3
JK ALUMINUM SLOT STYLE DOOR HANDLE INSERTS SET OF 3

DV8's best selling JK handle door inserts are made of Aircraft Grade Cast Aluminum with screw-in installation. 2-door version gets three handles (one for the rear gate!) 4-door version gets five handles (one for the rear gate!)

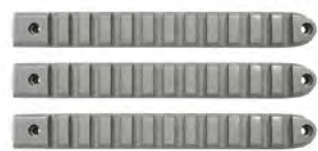


D-JP-190026-AL-5
JK ALUMINUM INSERTS 4 DOOR

D-JP-190026-BK-3
JK ALUMINUM INSERTS 2 DOOR BLACK



D-JP-190026-BK-5
JK ALUMINUM INSERTS 4 DOOR BLACK



D-JP-190028-AL-3
JK SILVER RAIL STYLE DOOR HANDLE INSERTS SET OF 3

DV8's best selling JK handle door inserts are made of Aircraft Grade Cast Aluminum with screw-in installation. 2-door version gets three handles (one for the rear gate!) 4-door version gets five handles (one for the rear gate!)

D-JP-190028-AL-5
JK ALUMINUM INSERTS 4 DOOR SILVER

D-JP-190028-BK-3
JK ALUMINUM INSERTS 2 DOOR BLACK



D-JP-190028-BK-5
JK ALUMINUM INSERTS 4 DOOR BLACK

D-JP-190059-AL-3
JK ALUMINUM DOOR HANDLE INSERTS SET OF 3 STICK ON

DV8's JK Door Handle inserts new version, race-inspired 'dimple-die' design in an effortlessly-easy, stick-on installation. Made from cast zinc, they are built to withstand the elements. 2-door version gets three handles (one for the rear gate!) 4-door version gets five handles (one for the rear gate!)

D-JP-190059-AL-5
JK ALUMINUM INSERTS 4 DOOR

KNOBS

D-JP-180014-BL
JK CLIMATE CONTROL KNOBS

Made from billet aluminum and slotted to allow the knob to illuminate, the set of (3) install easily and add a nice look to the Jeep's interior.



D-JP-180027-BL
JK BILLET DOOR SURROUND KNOBS 2 DOOR

Don't go topless without a set of billet aluminum door surround knobs to replace the stock ones from the factory that deteriorate over time



D-JP-180028-BL
JK BILLET DOOR SURROUND KNOBS 4 DOOR



LIGHT GUARDS

D-JP-190007-BK
JK TAIL LAMP GUARDS BLACK

These black, powder coat lamp guards are rugged enough to handle whatever the trail throws at you and since they're stainless steel, won't ever corrode through snow, mud or rain. Easy bolt-in installation: no modifications or drilling. Also available in polished stainless steel.



D-JP-190007-SS
JK TAIL LAMP GUARDS STAINLESS

SILL GUARDS

D-JP-18040-AL
JK 2 DOOR SILL PLATES

Made from extruded aluminum, they are black anodized and come with raised brushed accent bars to ensure a grippy mount into (or dismount from) your Jeep.



D-JP-18041-AL
JK 4 DOOR SILL PLATES



RAIL SYSTEMS

D-JP-190051-HD
JK HOOD MOUNTED RAIL SYSTEM

Our picatinny 'rail' system features mil-spec, hard-anodized, billet machined, extruded aluminum which means your gear's cocked, locked and ready to rock! Mount lights, a GoPro, grab handles, high-jack lifts, shovels or a mirror...



D-JP-190052-PIL
JK A PILLAR MOUNTED RAIL SYSTEM

Our modular system fits the 2007-18 Jeep JK stock hood mount, A-Pillar, roof rail and more hinge mounts to come.

D-JP-190053-RF
JK ROOF RAIL MOUNTED SYSTEM

Our modular system fits the 2007-18 Jeep JK stock hood mount, A-Pillar, roof rail and more hinge mounts to come.



D-JP-190054-GP
JK GO PRO RAIL MOUNT SYSTEM

This GoPro adapter fits the new DV8 Off Road picatinny 'rail' system which features mil-spec, hard-anodized, billet machined, extruded aluminum.



D-JP-190055-POD
JK POD STYLE LIGHT MOUNT FOR RAIL MOUNT SYSTEM

This A-pillar Pod Mounting adapter fits the new DV8 Off Road picatinny 'rail' system which features mil-spec, hard-anodized, billet machined, extruded aluminum.



D-JP-190056-JK
JK HI LIFT MOUNT BRACKET FOR RAIL MOUNT SYSTEM

This Hi-Lift Bracket Mounting adapter fits the new DV8 Off Road picatinny 'rail' system which features mil-spec, hard-anodized, billet machined, extruded aluminum.



D-JP-190057-LT

JK LIGHT BAR MOUNT FOR RAIL MOUNT SYSTEM

This Light Bar Mounting adapter fits the new DV8 Off Road picatinny 'rail' system which features mil-spec, hard-anodized, billet machined, extruded aluminum.



D-JP-190058-M16

JK M16 STYLED GRAB HANDLE FOR RAIL MOUNT SYSTEM

This rail grab handle is designed to fit the new DV8 Off Road picatinny 'rail' system which features mil-spec, hard-anodized, billet machined, extruded aluminum.

MIRRORS

NEW

D-JP-190050-B

JK TUBULAR MIRRORS

Mirrors are designed to offer maximum visibility with rugged protection. These mirrors are designed to fold in manually or upon contact to prevent damage. Designed with light weight yet durable materials, these mirrors will give you the ultimate race inspired look.



SUSPENSION

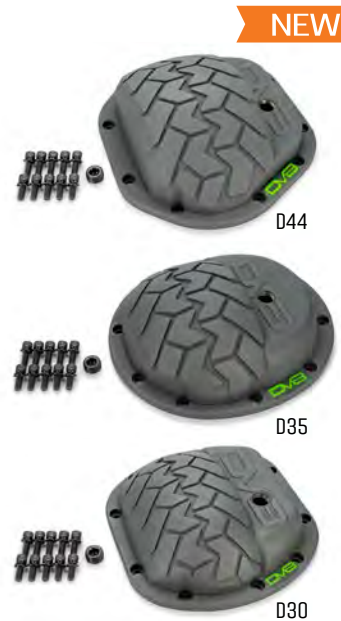
NEW

D-JP-JKBLJNT-01

JK DV8 ATOMIC GREEN DANA 44/30 BALL JOINT KIT

Designed for rugged offroad use. DV8 uses SAE4140 chromoly steel studs and SAE1045 steel housings to make one of the toughest ball joints on the market.

These ball joints are also greaseable which allows for standard maintenance and increased longevity. The grooves on the side of the housing are closer together resulting in superior resistance to turning that can occur. Comes with front and rear joints.



NEW

D-JP-110001-D44

DANA DIFFERENTIAL COVERS

Add character and increase the structural rigidity of the whole axle with a DV8 Differential Cover. Increased oil capacity decreases the operating temperature of the gear oil. Engineered from high tensile nodular cast iron with a thick 1/2" mounting flange and a 1/4" housing, this differential cover is ready to protect your gears and locker from the most punishing rocks and trail hazards!

D-JP-110001-D35 DANA 35 COVER

D-JP-110001-D30 DANA 30 COVER

SHIFTERS & TRAYS

D-JP-180008-BL

JK BILLET ALUMINUM MANUAL TRANSMISSION

Machined from 6061-T6 billet aluminum, designed to replace the plastic, original piece. It comes with the stainless steel mounting hardware, but NOT the rubber boot. It also requires a permanent modification to the original trim. stainless steel.



D-JP-180011-BK

JK 4WD SHIFT KNOB BLACK FINISH

DV8 Off Road's shift knobs are made from billet aluminum and feature our 'Tired Tread' design grip which feels good in your hand, but also provides a better tactile feel when it comes time to throw a shift.



D-JP-180011-BL

JK 4WD SHIFT KNOB BILLET FINISH



D-JP-180013-BK

JK AUTOMATIC TRANSMISSION SHIFT KNOB BLACK FINISH

DV8 Off Road's shift knobs are made from billet aluminum and feature our 'Tired Tread' design grip which feels good in your hand, but also provides a better tactile feel when it comes time to throw a shift.

D-JP-180013-BL

JK AUTOMATIC TRANSMISSION SHIFT KNOB BILLET FINISH



D-JP-181101-BL

JK PISTOL GRIP SHIFT HANDLE

The pistol grip is machined from 6061-T6 billet aluminum and was designed to look and feel like your favorite firearm in your hand.

D-JP-181112-BK

JK 6-SPEED SHIFT KNOB BLACK

DV8 Off Road's shift knobs are made from billet aluminum and feature our 'Tired Tread' design grip which feels good in your hand, but also provides a better tactile feel when it comes time to throw a shift.



D-JP-181112-BL

JK 6-SPEED SHIFT KNOB BILLET



D-JP-181113-BK

JK SHIFT KNOB AUTOMATIC BLACK

DV8 Off Road's shift knobs are made from billet aluminum and feature our 'Tired Tread' design grip which feels good in your hand, but also provides a better tactile feel when it comes time to throw a shift.

D-JP-181113-BL

JK SHIFT KNOB AUTOMATIC BILLET



D-JP-180012-BK

JK 6-SPEED SHIFT KNOB BLACK FINISH

DV8 Off Road's shift knobs are made from billet aluminum and feature our 'Tired Tread' design grip which feels good in your hand, but also provides a better tactile feel when it comes time to throw a shift.

D-JP-180012-BL

JK 6-SPEED SHIFT KNOB BILLET FINISH

D-JP-180030-B

JK DASH CONSOLE TRAY

This dash tray features foam, anti-slip pads to help keep your items from moving around and is a versatile add-on. No drill installation and will fit all dashes without Sirius XM radios.





JL/JT ACCESSORIES

JL & JT

TOP ITEM



D-JL-190001-K JL/JT HOOD HOLD DOWNS

DV8's billet aluminum turnbuckle and stainless steel heim joint hold downs. The quick-release push pin provides easy access to opening your hood and won't be lost thanks to the attached, stainless steel lanyard.



D-JL-190001-LK JL/JT LOCKING HOOD HOLD DOWNS

DV8's billet aluminum turnbuckle and stainless steel heim joint hold downs. The locking pin provides security, unwanted theft, and won't be lost thanks to the attached, stainless steel lanyard.



D-JL-190004-MIL JL ALUMINUM FUEL DOOR

The best fuel door that money can buy for the Jeep JL OE style inner housing, secure dual magnet retainer system, CNC machined 3D door, aluminum bezel, a smooth and precise hinge mechanism and a removable embossed door badge.

D-JL-180014-SIL2

JL/JT FRONT SILL PLATES 2 or 4 DOOR

These DV8 Offroad sill plates are designed to protect the vulnerable door jamb of your Jeep JL or Gladiator where you enter and exit the vehicle. They are made of the highest quality CNC billet aluminum and are guaranteed to protect your Wrangler. These sill plates are thicker and stronger than any of the competition and come with everything needed for install.



D-JL-180014-SIL4

4 Door rear sill plates



D-JL-180014-STR2

JL/JT FRONT SILL PLATES 2 or 4 DOOR



D-JL-180014-STR4

4 Door rear sill plates



D-JL-190052-PIL

JL/JT A-PILLAR MOUNTED RAIL SYSTEM

The D-JL-190052-PIL DV8 Light Bar/Rail System is the ultimate light bar mount for any JL or Gladiator. The design resembles an AR-15 Picatinny rail and it doesn't stop there! You can mount any of our rail system accessories this light bar as well. This includes mirrors for when the doors are off, POD light mounts, handles, action camera mounts and more!

Get the most modular light bar on the planet! This kit comes with all necessary components to mount a 50" light bar over the windshield, all other accessories sold separately. 51.5" mount to mount.



D-JL-190053-RF

JL/JT ROOF RAIL MOUNTED SYSTEM

The D-JL-190053-RF DV8 Light Bar/Rail System is the ultimate light bar mount for any JL or Gladiator. The design resembles an AR-15 Picatinny rail and it doesn't stop there! You can mount any of our rail system accessories to this light bar as well.

This product is designed to be mounted in between the A-Pillar uprights on item number D-JL-190052-PIL and is designed for mounting non end mount lights on the system. This item will only work with D-JL-190052-PIL.



NEW

D-JP-190049-A

UNIVERSAL TRAIL MIRROR FOR USE WITH DV8 PICATINNY RAIL SYSTEM

These Rail System Mirrors are the newest addition to our picatinny rail items. With a driver side flat mirror, and a convex passenger side mirror. Our design gives you the ability to run mirrors when you remove your factory doors.



ANTENNAS

D-JP-190012

TJ ANTENNA BLACK

The TJ replacement antenna is a stainless steel mast with e-coated black finish. OEM style grommet, cable and foam insulating cover. Includes new base cover with rubber gasket.



D-JP-190012-BK

TJ ANTENNA BLACK

The 8" billet aluminum antenna is machined from 6061-T6 material for added strength and style.



BEZELS

D-JP-180029-BK

TJ BILLET EMERGENCY BRAKE HANDLE COVER

Made from 6061-T6 billet aluminum, these handle covers have a cross pattern design (for better grip) that is anodized. Also available in Black.



FUEL DOORS

D-JP-190024-BLK

TJ BLACK FUEL DOOR

The 1997 - 06 Jeep TJ black, billet aluminum fuel door assembly features a magnetic closure and adds a more refined look to your Jeep's stock fuel filler space.



CAPS

D-JP-120007-BL

TJ OIL DIP STICK HANDLE

Machined from 6061-T6 billet aluminum with a brushed & textured surface and clear anodized finish, this handle is the perfect dress-up accessory for showing off what's under your Jeep's hood.



D-JP-190025-BL

TJ BILLET FUEL CAP

DV8 Off Road's TJ 1997 - 06 Billet Fuel Cap is an easy way to secure access to your fuel with a lockable cap and the billet finish looks great!



D-JP-190005-BL

TJ/JK BILLET FUEL CAP

DV8 Off Road's TJ/JK 2001 - 18 Billet Fuel Cap is an easy way to secure access to your fuel with a lockable cap and the billet finish looks great!



D-JP-190005-BLK

TJ/JK BILLET FUEL CAP BLACK

DV8's black, billet lockable gas cap is designed to fit the 2001-18 Jeep TJ/JK



HOOD ACCESSORIES

D-JP-120013-BL

TJ BATTERY HOLD DOWN BILLET

Machined from 6061-T6 billet aluminum with a brushed & textured surface and clear anodized finish, this battery hold-down not only looks great, but it's built to keep that battery from moving around in your next off road adventure.



TOP ITEM

D-JP-190021-K

TJ HOOD HOLD DOWNS

DV8's billet aluminum turnbuckle and stainless steel heim joint hold downs. The quick-release push pin provides easy access to opening your hood and won't be lost thanks to the attached, stainless steel lanyard.



D-JP-190001/21

TJ HOOD HOLD DOWN TURNBUCKLES

DV8's Hood Hold Downs (in standard and lockable versions) can be upgraded with an optional black turnbuckle to replace the standard silver color.



D-JP-190021-LK

TJ LOCKING HOOD HOLD DOWNS

DV8's billet aluminum turnbuckle and stainless steel heim joint hold downs. The locking pin provides security, unwanted theft, and won't be lost thanks to the attached, stainless steel lanyard.



SHIFTERS

D-JP-180021-BK

TJ SHIFT KNOB W/ASSEMBLY BLACK

DV8 Off Road's shift knobs are made from billet aluminum and feature our 'Tired Tread' design grip which feels good in your hand, but also provides a better tactile feel when it comes time to throw a shift.



D-JP-180021-BL

TJ SHIFT KNOB W/ASSEMBLY BILLET

DV8 Off Road's shift knobs are made from billet aluminum and feature our 'Tired Tread' design grip which feels good in your hand, but also provides a better tactile feel when it comes time to throw a shift.



D-JP-180022-BK

TJ 5-SPEED SHIFT KNOB & LEVER BLACK

DV8 Off Road's shift knobs are made from billet aluminum and feature our 'Tired Tread' design grip which feels good in your hand, but also provides a better tactile feel when it comes time to throw a shift.



D-JP-180022-BL

TJ 5-SPEED SHIFT KNOB & LEVER BILLET

DV8 Off Road's shift knobs are made from billet aluminum and feature our 'Tired Tread' design grip which feels good in your hand, but also provides a better tactile feel when it comes time to throw a shift.



SHIFTERS CONT.

D-JP-180023-BK

TJ AUTO SHIFT LEVER BLACK

DV8 Off Road's shift knobs are made from billet aluminum and feature our 'Tired Tread' design grip which feels good in your hand, but also provides a better tactile feel when it comes time to throw a shift.



D-JP-180023-BL

TJ AUTO SHIFT LEVER BILLET

DV8 Off Road's shift knobs are made from billet aluminum and feature our 'Tired Tread' design grip which feels good in your hand, but also provides a better tactile feel when it comes time to throw a shift.



D-JP-180012-BK

TJ 6-SPEED SHIFT KNOB BLACK FINISH

DV8 Off Road's shift knobs are made from billet aluminum and feature our 'Tired Tread' design grip which feels good in your hand, but also provides a better tactile feel when it comes time to throw a shift.



D-JP-180012-BL

TJ 6-SPEED SHIFT KNOB & LEVER BILLET

DV8 Off Road's shift knobs are made from billet aluminum and feature our 'Tired Tread' design grip which feels good in your hand, but also provides a better tactile feel when it comes time to throw a shift.



KNOBS

D-JP-180017-BL

TJ BILLET DOOR SURROUND KNOBS

Don't go topless without a set of billet aluminum door surround knobs to replace the stock ones from the factory that deteriorate over time.

GRILLE ACCESSORIES

D-JP-190018-BLACK

TJ GRILLE INSERTS BLACK

Our Jeep Grille Inserts are made from solid, billet aluminum so bugs will really know what hit them. Comes with the necessary hardware and installation instructions and is also available in Brushed and Polished finishes.



JEEP YJ

KNOBS

D-JP-180031-BK

YJ TRANSFER CASE KNOB BLACK

DV8 Off Road's shift knobs are made from billet aluminum and feature our 'Tired Tread' design grip which feels good in your hand, but also provides a better tactile feel when it comes time to throw a shift.



D-JP-180031-BL

YJ TRANSFER CASE KNOB BILLET



SHIFTER KNOBS

D-JP-180032-BK

YJ 5-SPEED SHIFTER KNOB BLACK

DV8 Off Road's shift knobs are made from billet aluminum and feature our 'Tired Tread' design grip which feels good in your hand, but also provides a better tactile feel when it comes time to throw a shift.



D-JP-180032-BL

YJ 5-SPEED SHIFTER KNOB BILLET



HOOD ACCESSORIES

D-JP-190031-K

YJ HOOD HOLD DOWNS

DV8's billet aluminum turnbuckle and stainless steel heim joint hold downs. The quick-release push pin provides easy access to opening your hood and won't be lost thanks to the attached, stainless steel lanyard.



UNIVERSAL

RTB1-01BK BLACK

RTB1-01GN GREEN

RTB1-01OL OLIVE

RTB1-01RD RED

TRACTION BOARD W/BAG

DV8 Offroad Traction Boards are a must for any tail ride. Designed with reinforced nylon, these board will get you out of most situations with ease. Designed to withstand 10 tons of pressure, these board can be used as a Hi Lift stand, shovel and tire traction. When not in use, these boards are stackable and come in a durable cloth carrying bag. Sold as a pair



TOP ITEM

UNIVERSAL CONT.

D-FIREX-MNT-DOR

QUICK RELEASE FIRE EXTINGUISHER MOUNT

NHRA-approved, this quick release fire extinguisher mount is Baja-proven! It features CNC-machined 6061-T6 billet aluminum construction with a red, anodized, quick release pull knob. It can be installed in just about any location.



D-FIREX-MNT-S-DOR

QUICK RELEASE FIRE EXTINGUISHER MOUNT SILVER



D-LIGHT-MNT-DOR

QUICK RELEASE FLASHLIGHT MOUNT

Based on the same design this system is designed to hold your flashlight via a CNC-machined billet aluminum holder and quick-release, red anodized knob.



D-FIRE-CLMP-L-DOR

FIRE EXTINGUISHER MOUNT CLAMPS LARGE

DV8's Quick Release Fire Extinguisher system does not come with clamps to hold the fire extinguisher in place. This clamp is large enough to support a larger, portable fire extinguisher system.



D-FIRE-CLMP-S-DOR

FIRE EXTINGUISHER MOUNT CLAMPS SMALL

This clamp is designed to hold a smaller, portable fire extinguisher system.



DVBTM
OFF-ROAD



2021
LED LIGHTING
PRODUCT LINE



NEW



DV8 Elite Series

The perfect addition to your rig! Our new bezel-less housing, small heat fins, and OSRAM LEDs are the best combination for both styling and offroad use. Our indirect reflector improves direction and reduces glaring and hotspots. Our UV-resistant PC lens is shatterproof and is designed to whisk away ice and water. Offering a IP68 rating and a 3 year warranty.

BE52EW500W

52" INCH

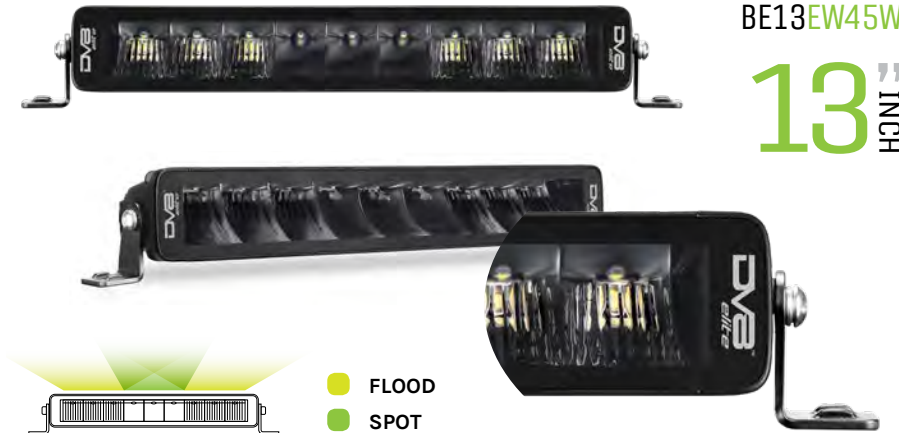
DV8 ELITE Series -Universal fitment
5 watt high intensity OSRAM LEDs rated to 50,000 hours, have end and rear mounts. Color Temp: 5700K | Flood/Spot
• 500W total, 42000 Lumens, 53x2.75x2.5



BE20EW105W

20" INCH

DV8 ELITE Series -Universal fitment
5 watt high intensity OSRAM LEDs rated to 50,000 hours, have end and rear mounts. Color Temp: 5700K | Flood/Spot
• 105W total, 8800 Lumens, 20.5x1.5x2



BE13EW45W

13" INCH

DV8 ELITE Series
-Universal fitment
5 watt high intensity OSRAM LEDs rated to 50,000 hours, have end and rear mounts. Color Temp: 5700K | Flood/Spot
• 45W total, 3800 Lumens, 13x2.5x2

BESLDBKTSM

BE20EW105W

BESLDBKTLG

BE52EW500W

BE13EW45W



DV8 ELITE Series Light Bar Rear Slide Mounts
-Universal fitment
These rear slide mount brackets allow fitment to just about anywhere.
- Fully adjustable slideable mounts with vertical adjustment.
- Rubber feet for secure fitment to uneven surfaces.

BE3EW40W

3" INCH



DV8 ELITE Series Pod Lights
-Universal fitment
10 watt high intensity OSRAM LEDs rated to 50,000 hours, have end and rear mounts. Color Temp: 5700K | Flood
• 40W total, 4800 Lumens, 3x3x2.75

BE3FMW40W

3" INCH



DV8 ELITE Series Flush Mount Pod Lights
-Universal fitment
10 watt high intensity OSRAM LEDs rated to 50,000 hours, have end and rear mounts. Color Temp: 5700K | Flood
• 40W total, 4800 Lumens, OD Face plate/ 4.8x3.5x2.75

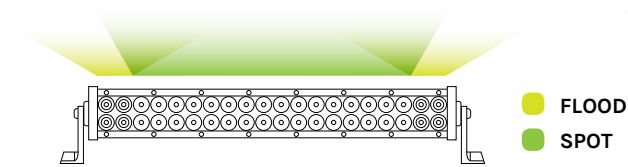


BR20E120W3W



BRS Pro Series -Universal fitment
These lights have a black textured face, polycarbonate lens, and a IP68 rating. All DV8 LED lights use 3 watt CREE LEDs rated to 50,000 hours, have end and bottom mounts.

- **BR5E24W3W**
24W total, 2000 Lumens, 5.5x3.25x3
- **BR12E72W3W**
72W total, 7000 Lumens, 13.5x3.25x3
- **BR20E120W3W**
120W total, 10100 Lumens, 21.5x3.25x3
- **BR30E180W3W**
180W total, 13000 Lumens, 31.5x3.25x3
- **BR40E240W3W**
198W total, 16000 Lumens, 41.5x3.25x3
- **BR50E300W3W**
300W total, 21500 Lumens, 52x3.25x3



● FLOOD
● SPOT

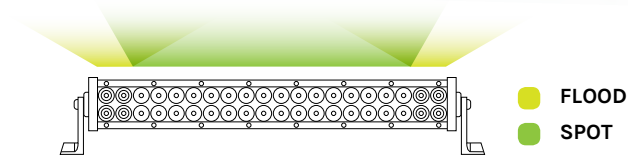


B20CE120W3W



Chrome Series -Universal fitment
Come with a polycarbonate lens, IP68 rating, flood/spot combo light pattern, and 3 watt CREE LEDs rated to 50,000 hours. All Chrome series lights come with end and bottom mounts.

- **B5CE24W3W**
24W total, 2000 Lumens, 5.5x3.25x3
- **B12CE72W3W**
72W total, 7000 Lumens, 13.5x3.25x3
- **B20CE120W3W**
120W total, 10100 Lumens, 21.5x3.25x3
- **B30CE180W3W**
180W total, 14500 Lumens, 31.5x3.25x3
- **B50CE300W3W**
300W total, 21500 Lumens, 52x3.25x3



● FLOOD
● SPOT

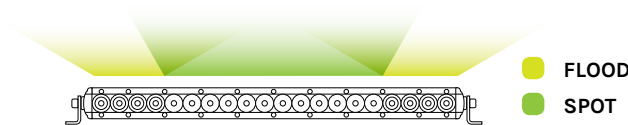


BS20E100W5W



SL8 Series -Universal fitment
Comes with a polycarbonate lens, IP68 rating, flood/spot light pattern, and 5 watt CREE LEDs that are rated to 50,000 hours. A low-profile design while still achieving maximum light output. End mounting only.

- **BS6E30W5W**
30W total, 2310 Lumens, 7x1.5x3
- **BS10E50W5W**
50W total, 3850 Lumens, 11x1.5x3
- **BS20E100W5W**
100W total, 7700 Lumens, 21x1.5x3
- **BS30E150W5W**
140W total, 11550 Lumens, 31x1.5x3
- **BS40E110W5W**
190W total, 14800 Lumens, 39.5x1.5x3
- **BS50E250W5W**
250W total, 19250 Lumens, 51.5x1.5x3



● FLOOD
● SPOT



NEW HLCJL-01
w/Halo



LED OEM JL Projector Headlights

The DV8 Offroad HLCJL-01 is the ultimate JL replacement headlight. This light is 9" wide (factory size) and is made of OEM quality materials inside and out. The light replicates the upgraded LED kit from Jeep for a fraction of the price. The lights come with everything necessary for install including wiring harnesses, ballasts and installation hardware.



HL7JK-01 HL7JK-02
w/Halo



LED Projector Headlights

DV8 LED projector headlights are a huge upgrade from stock JK headlights in both brightness and style. They use advanced optical technology to make the most of the LED lights that are housed within them. This "projector" sends a bright and useful pattern toward the front of the Jeep allowing you to see almost twice the distance of a stock headlight. Many also prefer the white light that these headlights give off rather than the amber color from standard headlights. The lights are available with and without a white halo and both styles come with a full harness to allow for simple and easy installation.



TLJK-2
Octagon TLJK-1
Horizontal



LED Tail Lights

Off road LED Tail Lights are just the thing to set your Jeep apart from the others and are great to replace lights that have been damaged out on the trail.





BCME27W3W



LED Mirror Housing

The DV8 Offroad LED mirror housing allows drivers to have a wider range of visibility at night. LEDs are built into the mirror housings and are angled slightly outward from the center of the Jeep to promote a better field of view. DV8 Off Road LED mirrors allow for a safer drive on dark roads and better visibility during late night offroad excursions. The DV8 mirror housings also work as a turn signal to replace the factory fender signals when moving to aftermarket fenders.



R4FL16W3W



LED Fog Lights

DV8 LED Fog Lights provide an alternative to factory fog lights and compliment LED headlights. These lights come complete with a housing that is the same as the factory housing and a connector that is ready to be spliced into the factory wiring. If you are running an aftermarket bumper and need fog lights or just want to upgrade your stock bumper these lights are a great option.



BCFLJL-01



LED JL/JT Fog Lights

The BCFLJL-01 for Jeep JL and Gladiator puts out much crisper light compared to the OEM units and mount in the OEM mounting holes or on aftermarket bumpers. These LED lights are put through strict QC testing for LED function, water tightness, and measured to ensure that each light is to specification. Even if your Jeep didn't come with the LED package you can still have the style and visibility that LED fog lights offer.

NOTE: Uses Factory 3 or 4 hole mounting brackets (included)



B4CE18W3W



4" LED Cube Light

DV8 Optical Technology and cutting edge design delivers unparalleled light output. 3" Cube Light, polycarbonate lens, IP68 rated, flood / spot, 3W Cree Led rated 50'000 hours, 18W total, 1540 Lumens, 3x3x3, bottom mount



B3CE16W4W



3" LED Cube Light

DV8 Optical Technology and cutting edge design delivers unparalleled light output. 3" Chrome Cube Light, polycarbonate lens, IP68 rated, flood / spot, 5W Cree Led rated 50'000 hours, 20W total, 1540 Lumens, 3x3x3, bottom mount



B3FM24W3W



3" LED Flush Mount Cube Light

DV8 Optical Technology and cutting edge design delivers unparalleled light output. 3" Chrome Cube Light, polycarbonate lens, IP68 rated, flood / spot, 5W Cree Led rated 50'000 hours, 20W total, 1540 Lumens, 3x3x3, bottom mount



R3.5E16W3W



3.5" Round LED Light | Spot Pattern

DV8 Optical Technology and cutting edge design delivers unparalleled light output. 3.5" round utility light, polycarbonate lens, IP68 rated, flood, 3W Cree Led rated 50'000 hours, 16W total, 1400 Lumens, 3.5x3.5x1.8, bottom mount



S2.1E10W10W



2" Square LED Light

DV8 Optical Technology and cutting edge design delivers unparalleled light output. 2" round utility light, polycarbonate lens, IP68 rated, flood, 10W Cree Led rated 50'000 hours, 10W total, 900 Lumens, 2x2x2.5, bottom mount



R4.3E18W3W



5" Round LED Light

DV8 Optical Technology and cutting edge design delivers unparalleled light output. 5" round utility light, polycarbonate lens, IP68 rated, flood, 3W Cree Led rated 50'000 hours, 18W total, 1400 Lumens, 4.8x4.8x1.8, bottom mount



S4.3E27W3W

5" Squared LED Light

DV8 Optical Technology and cutting edge design delivers unparalleled light output. 5" square utility light, polycarbonate lens, IP68 rated, flood, 3W Cree Led rated 50'000 hours, 27W total, 2200 Lumens, 4.8x4.8x1.8, bottom mount



WB12SC

Steel Cable Winch

- 12,000 lb Capacity
- 6hp motor 12DC
- Gear Train: 3 staged planetary, Gear Reduction Ratio 256:1
- Steel Cable, Steel Roller Fairlead
- 12.5' wired and wireless remote included.
- Steel Control Box for added durability



WB12SR

Synthetic Line Winch

- 12,000 lb Capacity
- 6hp motor 12DC
- Gear Train: 3 staged planetary, Gear Reduction Ratio 256:1
- Synthetic Line, Haulse Aluminum Fairlead
- 12.5' wired and wireless remote included.
- Steel Control Box for added durability

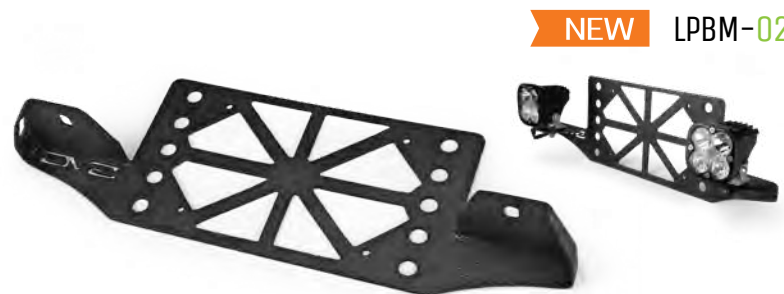


TOP ITEM LPBM-01

Flip Up License Plate Relocation Bracket Fairlead Mounted

The DV8 LPBM-01 was introduced due to the demand for a functional 50 state legal license plate mount that allows Jeepers to flip and winch. Just pull the plate up and you are ready for recovery. Mounts to any fairlead (roller or hawse) and keeps your rig street legal.

- Universal design
- Matches DV8 bumpers
- Excellent durability
- Flips out of the way



NEW LPBM-02

Universal License Plate Mount

Built for just about any vehicle. If you felt the need for more lighting, using the factory license plate location is a perfect addition without any difficult modification. This plate can also be used on almost any aftermarket winch bumper if you plan to not run a winch. Add some must needed light to the front of your rig.

- Made from 1/8" steel/lightweight
- 50 state legal and fits most vehicles



DV8 Off Road Winch Accessories and Gear

APPLICATION	PART NO.	DESCRIPTION
UNIVERSAL	WC12SC	Winch Cover 12K Winch Black
UNIVERSAL	WHS12	Wired Remote 12K Winch
UNIVERSAL	WWRC12	Wireless Remote For 12K Winch
UNIVERSAL	WMK12K	Winch Mounting Kit DV8 12K Winches For Use W/Winch Plates



2021

WHEEL LINE

DV8 Off-Road Wheels are designed for exceptional off road performance and aggressive styling to keep your vehicle off road ready. These wheels are offered in a variety of finishes including matte black, gloss black, milled, and machined. All our wheels are tested to exceed factory specifications.

DV8-886
Simulated Beadlock
Wheels





DV8-882 **Beadlock Racing Wheels**

- Wheels are constructed from 356-T6 Aluminum 3,500 lbs load rating
- 6061 T6 rings are 5/8" thick with tapered edge to avoid breaks
- Powder coated matte black with polished ring
- Recessed bolt holes to prevent shears, Grade 8 Hardware included
- Offset: -20mm to 0mm

Sizes: 17x8.5 - 5, 6, and 8 Lug



DV8-887 **Simulated Beadlock**

- One piece cast wheels, 2,500 lbs load rating
- Powder coated matte black with machined lip, bronze with matte black ring
- Sizes: 17x9, 6 x 120
Offset: +20mm



DV8-886 **Simulated Beadlock**

- One piece cast wheels, 2,500 lbs load rating
- Powder coated matte black with machined lip, bronze with matte black ring
- Sizes: 17x9, 20x9, 20x12 - 5, 6, and 8 Lug,
Offset: 0mm to -44mm



DV8-883 **Simulated Beadlock**

- One piece cast wheels, 2,500 lbs load rating
- Powder coated matte black with machined lip, bronze with matte black ring
- Sizes: 17x9, 20x9 - 5 and 6 Lug,
Offset: 0mm to -12mm



Learn more about truck bed accessories we have. 114