

108

STREET
COLLECTION





VENTURE HELMETS

The Venture Dual Sport Helmet is a lightweight, breathable helmet that can be worn when riding on the track or the street. It features an adjustable mouth intake port, a scratch and fog resistant shield and is DOT/ECE certified.

NEW



Arise | Matte Black



NEW



Arise | White



Solid | Matte Black



Solid | White



VENTURE



1. Lightweight thermoplastic shell: 1587 grams
2. RAM air cooling system
3. Adjustable mouth intake port
4. Scratch & fog resistant shield
5. Internal EPS ventilation channels
6. Removable/washable moisture wicking comfort liner
7. Clear, mirror and smoke shield available
8. DOT & ECE certified
9. Sizes: XS, S, M, L, XL, XXL



Mirror Visor \$30



Smoke Visor \$30



STREET HELMET

EVS Street Helmets are made from injection molded high impact ABS. They feature a quick release shield and interior drop-down sun visor with an adjustable ventilation system for increased breathability.

WHY WEAR THE STRATUS HELMET?

IMPACT PROTECTION ENHANCED VENTILATION NOISE REDUCTION

The Stratus is an improvement to the traditional street helmet. Its aerodynamic construction, strategically placed air vents, channeled inner EPS and lens gasket allow for dual performance, enhanced ventilation and noise reduction.



1. ADAPTABLE VENTS

The Stratus has 3 intake and 5 exhaust vents that can be opened or closed depending on riding conditions.



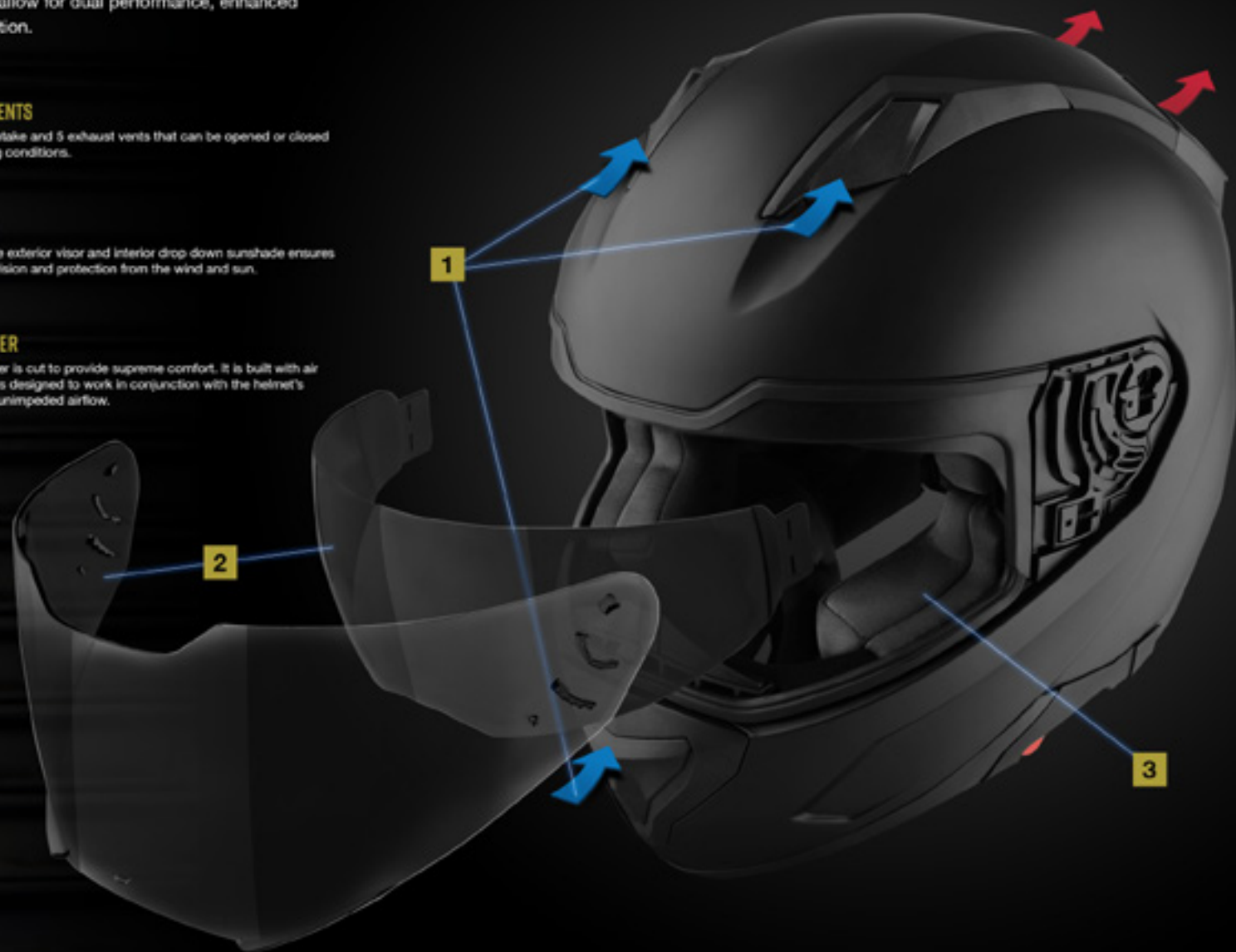
2. DUAL VISORS

The interchangeable exterior visor and interior drop down sunshade ensures an optimal field of vision and protection from the wind and sun.



3. COMFORT LINER

The dual density liner is cut to provide supreme comfort. It is built with air mesh material and is designed to work in conjunction with the helmet's ventilation to allow unimpeded airflow.





NEW



Mainframe | Matte Black



NEW



Warbird | Matte Olive Drab



NEW



Mainframe | Matte White



NEW



Warbird | Matte Grey

STRATUS



1. Hi-Flow ventilation with lock-out vent switches adjust to any climate or riding condition
2. Sleek, aerodynamic design for seamless navigation at high speeds
3. Drop down sun visor for easy on-the-fly use
4. Ultra-plush, moisture wicking, removable washable anti-microbial liner
5. Wind block chin curtain
6. High efficiency anti-fog shield coating
7. Injection molded high density ABS shell
8. Dual density EPS impact liner for the highest level of protection
9. Sizes: XS, S, M, L XL, XXL

VISOR & SUNSADE OPTIONS



Clear

Smoke

Sunshade

NEW

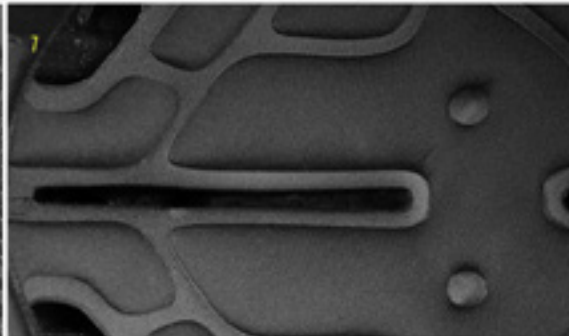
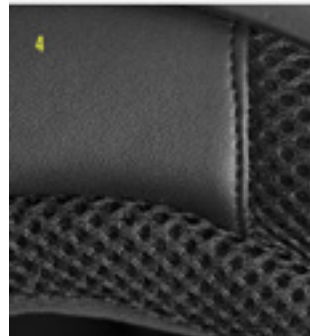
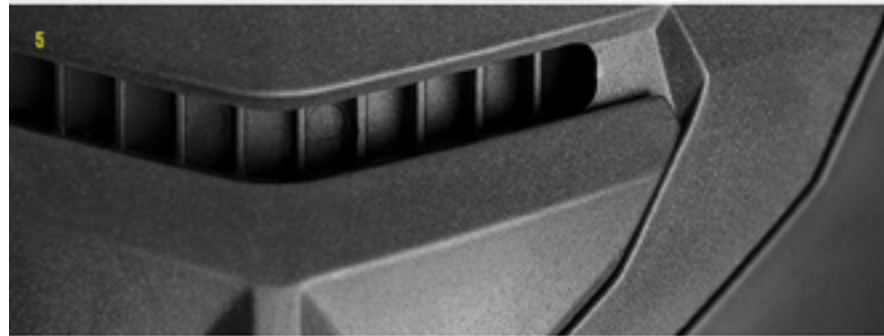


Solid | Matte Black

NEW



Solid | Matte White





STREETGLOVES

EVS Street Gloves are made from high quality materials and come in on and off the track designs. We offer warm and cold weather gloves to suit any riding environment.



Black

NEW

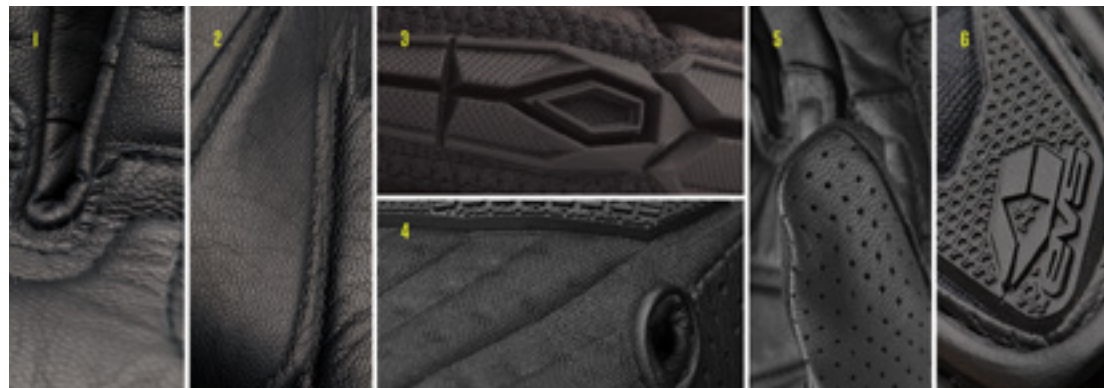


Grey

NEW

ENFORCER

1. Genuine leather reinforcements on the palm, saddle, fourchettes and fingertips for durability and comfort
2. EVA padded palm for impact and vibration absorption
3. TPR knuckle impact protection
4. Embossed airprene comfort cuff
5. Touch screen compatible thumb and index finger
6. TPR wrist closure
7. Sizes: S, M, L, XL, XXL





LAGUNA AIR

1. Lightweight air mesh provides breathability and comfort
2. Ergonomic finger construction offers excellent fit
3. Synthetic suede palm provides tactile feel
4. Leather palm reinforcements for abrasion resistance
5. Sizes: S, M, L, XL, XXL



Black



White

VALENCIA

1. Lightweight air mesh provides breathability and comfort
2. Ergonomic finger construction offers excellent fit
3. Synthetic suede palm provides tactile feel
4. Leather palm reinforcements for abrasion resistance
5. Molded foam knuckle pad for impact resistance
6. Sizes: S, M, L, XL, XXL



■ ASSEN

1. Leather and air mesh construction for breathability
2. Full leather padded palm
3. Carbon fiber knuckle for maximum impact resistance
4. Molded pads for finger protection
5. Stretch airprene cuff with TPR closure
6. Sizes: S, M, L, XL, XXL



■ NYC

1. Leather and air mesh construction for breathability
2. Full leather padded palm
3. Carbon fiber knuckle for maximum impact resistance
4. Molded pads for finger protection
5. Stretch airprene cuff with TPR closure
6. Sizes: S, M, L, XL, XXL



■ BLIZZARD

1. Ideal for cold weather riding
2. Full leather palm for fit and protection
3. Adjustable cuffs offer custom fit
4. Suede reinforcement panels on palm provide increased durability
5. Impact resistant lower palm protection
6. Carbon fiber knuckle for impact protection
7. Reflective piping
8. TPR shield wiper
9. Sizes: S, M, L, XL, XXL



■ CYCLONE

1. Ideal for extreme cold and wet weather
2. Full leather construction for fit and protection
3. Adjustable cuffs offer custom fit
4. Leather reinforcement panels on palm provide increased durability
5. Impact resistant lower palm protection
6. Leather wrapped hard knuckle guard for impact protection
7. Reflective piping
8. TPR shield wiper
9. Sizes: S, M, L, XL, XXL





STREET BODYARMOR

EVS Street Body Armor is designed to protect the rider's upper body and limbs in the event of a crash. They feature high impact polypropylene panels for increased protection.



COMP JACKET



The Comp Jacket is the ultimate in lightweight, full upper body protection. It features shoulder, elbow, chest and back impact protection.

1. Lightweight fabric with mesh stretch panels for superior fit and breathability
2. Full articulating spine protection that moves with you
3. Full torso and elbow protection
4. Foam impact chest panels
5. Built in compression kidney belt
6. Removable PU back armor for cleaning
7. Sizes: S/M, L/XL, XXL



COMP VEST



Modeled after the Comp Jacket, the Comp Vest is a sleeveless upper body protector with padded chest pads and articulating spine protection panels that move with the rider.

1. Lightweight fabric with mesh stretch panels for superior fit and breathability
2. Full articulating spine protection that moves with you
3. Foam impact chest protectors
4. Compression fit
5. Fits under most jackets
6. Sizes: S/M, L/XL, XXL



TOURING VEST

1. Ultra-Bright Hi-Viz, coated, breathable Oxford
2. High visibility reflective paneling with reflective graphics
3. Coated breathable Nylon Oxford Cloth
4. Designed to military PPE visibility requirements
5. Transparent vinyl ID chest patch pocket
6. Adjustable hook and loop side waist tabs
7. Front pocket with zippers
8. Drop tail and over-jacket rider fit
9. Mesh lining
10. Sizes: S/M, L/XL, XXL



Front
Black



Front
Hi-viz



Front
Black



Front
Hi-viz

STREET VEST



1. Adjustable shoulder straps
2. Aerodynamic hump doubles as a hydration pack or storage
3. Adjustable kidney belt
4. Foam impact chest protectors
5. Sizes: S/M, L/XL, XXL

SPORT VEST



1. Full articulating spine protection that moves with you
2. Adjustable shoulder straps
3. Adjustable kidney belt
4. Foam impact chest protectors
5. Low-profile design fits under most jackets
6. Sizes: S/M, L/XL, XXL



RACE BACK

CE
EN 1821-2
D15 001444#2

1. Full articulating spine protection that moves with you
2. Custom molded foam back for maximum airflow
3. Double closure kidney belt
4. Built in compression kidney belt
5. Adjustable arm straps
6. Sizes: S/M, L/XL



SPORT BACK

CE
EN 1821-2
D15 001444#2

1. Full articulating spine protection that moves with you
2. Single closure kidney belt
3. Adjustable arm straps
4. Sizes: S/M, L/XL



SP KNEE

CE
EN 1821-1
D15 001444#1

1. Replaceable PU knee sliders
2. Vented panels with airmesh sleeve for heat dispersion
3. Extendable shin guard for increased coverage
4. Impact resistant PU structure with EVA padding
5. Sold in pairs
6. Sizes: S/M, L/XL



SP ELBOW

CE
EN 1821-1
D15 001444#1

1. Vented panels with airmesh sleeve for increased breathability
2. Extendable forearm guard for increased coverage
3. Impact resistant PU structure with EVA padding
4. Sold in pairs
5. Sizes: S/M, L/XL

COMPTON SERIES



THE COMPTON SERIES WAS DESIGNED
WITH BOTH FUNCTIONALITY AND STYLE
IN MIND.

NEW



Brown



NEW



Black



RMF Elbow pads



RMF Shoulder pads

COMPTON LEATHER JACKET

\$399

- 1. Perforated leather panels increase airflow
- 2. Removable RMF elbow and shoulder pads
- 3. Reflective black piping integrated into back and sleeve seams
- 4. Insulated quilted liner
- 5. Reinforced elbow and shoulder panels
- 6. Back protector pocket for CE spine protection (sold separately)
- 7. Sizes: M, L, XL, XXL

COMPTON TEXTILE JACKET

\$249

1. Waxed cotton with inset genuine leather panels
2. Removable RMF elbow and shoulder pads
3. Reflective black piping integrated into back and sleeve seams
4. Back protector pocket for CE spine protection (sold separately)
5. Sizes: M, L, XL, XXL



COMPTON VEST

\$189

1. High abrasion-resistant manufactured PU leather
2. Accordion stitched side flex panels
3. Drop tail and over-jacket rider fit
4. Insulated quilted liner
5. Back protector pocket for CE spine protection (sold separately)
6. Sizes: M, L, XL, XXL



RMF Elbow pads

RMF Shoulder pads





Brown



NEW



Black



COMPTON GLOVE

\$65

- 1. Full premium grade leather for high abrasion resistance
- 2. RMF (Reactive Memory Foam) impact protecting knuckle
- 3. Double layer impact dampening palm
- 4. Stretch accordion leather panels for increased flexibility and comfort
- 5. Short cuff design with hook and loop TPR wrist closure
- 6. Touch screen compatible thumb and index finger
- 7. Sizes: S, M, L, XL, XXL