



2017
POWERSPORTS
CATALOG PISTONS •
PINS • RINGS •
COMPONENTS

70 YEARS OF RACING EXCELLENCE



Today, JE Pistons is the largest manufacturer of custom forged and billet pistons tailored to your needs!

In 1947, we opened our doors for one simple objective- to supply the racing community with the highest quality pistons and components in the market. Today, we continue to fulfill that promise and provide the shortest lead times and highest fill rates in the industry. JE is your resource for all your high performance piston needs!

JE uses the latest technology and partners with top race teams across the globe. But development doesn't stop there. From the latest manufacturing equipment to a fully staffed and monitored quality lab and R&D facility, you can be assured the product you receive is the best available.



JE Pistons is part of Race Winning Brands, a group of leading brands that develop the engine parts you want! With a major focus on R&D, our brands have dedicated R&D facilities and dynos so you know you are getting the best products for optimum performance in your car, dirt bike, ATV, v-twin or snowmobile. From pistons and connecting rods to electronics and gauges, RWB brands lead the way in the aftermarket!



TABLE OF CONTENTS

JE PISTONS

Our Facility	4
JE Pro Series Pistons	5

STREET

Aprilia	8
Ducati	8
Honda	8-9
Kawasaki	9-11
Suzuki	11-13
Triumph	14
Victory	14
Yamaha	14

OFF ROAD

Gas Gas	17
Honda	17-18
Husaberg	19
Husqvarna	19
Kawasaki	20
KTM	20-21
Suzuki	21-22
Yamaha	22-23

ATV / UTV

Arctic Cat	25
Bombardier / Can Am	25
Honda	26
John Deere	27
Kawasaki	27
KTM	28
Polaris	28-29
Suzuki	29
Yamaha	30-31

WATER & SNOW

Kawasaki	33
Sea Doo	33
Ski Doo	33
Yamaha	33

HARLEY-DAVIDSON® / Other V-TWINS

Shovelhead	35
Sportster	35
Buell	35
Evo	36
Evo Bathtub	36
Twin Cam	36-37
Other V-Twins	39
Honda	39
Rev Tech	39
S&S	39
Triumph	39
Victory	39

COMPONENTS

Diametric Ring Chart	41-51
Locks	52-53
Wrist Pins	54-55

PISTON TECH

Piston Terminology	56
Piston Features	57
Piston Options	58
Custom Piston Features and Codes	59

APPAREL

Shirts, Hats, Beanies	60
Decals, Banners, Key Rings	60

ORDERING

Ordering / JE Newsletter	61
Shelf Order Form	62
Custom Order Form	63

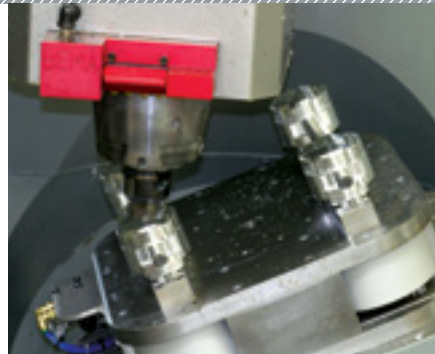
NOTICE: Due to the nature of performance applications, all JE Products are sold without any expressed warranty or any implied warranty of merchantability or fitness for a particular purpose. JE Pistons shall not, under any circumstances, be liable for any special, incidental or consequential damages, including, but not limited to, damages or loss of other property or equipment, loss of profits or revenue, cost of purchased or replacement goods, or claims of customers of the purchaser which may arise and/or result from the sale, installation or use of these parts. JE Pistons reserves the right to make product improvements and changes without notice and without incurring liability with respect to similar products previously manufactured.

WARNING: Laws concerning this product vary from state to state. Your state may prohibit its use on public roads or restrict its use to novelty, show use, off-road areas, or race facility areas only. In some states off-road uses may also be prohibited. The manufacturer and retailer assume no responsibility for any use or application of this product in violation of any applicable law. Before installing this product on any vehicle that are fitted with emissions controls, please check your state, local laws and regulations.



SALES

Our customer service and sales team is based out of our Southern California office. Each one of JE's staff of sales technicians and customer service support personnel all share the same passion for racing. This is why JE offers the highest quality professional and technical support for all your piston and component needs.



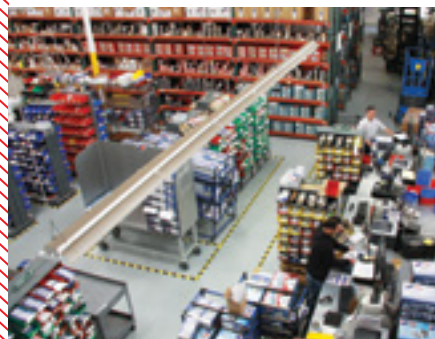
MIDWEST MANUFACTURING CENTER

Our advanced manufacturing center in Mentor, Ohio, features in-house forging capability and is now the largest high performance piston manufacturing plant in the world! This location will allow further emphasis on quality, new product features and improved delivery time to our customers!



TECHNOLOGY CENTER

Our Technology Center offers some of the most advanced piston design and analysis technology in the industry. We maintain the most modern climate controlled clean room inspection facility to assure unrivaled quality assurance. This center includes equipment such as Zeiss Prismo S-ACC CMM, Federal Formscan tester, Mahr-Federal form tester, Taylor Hobson Profilometer, Zeiss Metallograph, Ricardo's ring pack simulation code and the latest in non-linear FEA Code.



WEST COAST & MIDWEST DISTRIBUTION CENTERS

JE Pistons now has piston distribution centers in Southern California and Ohio! Our expanded footprint allows us to deliver product to our customers faster than ever before. Our distribution center holds over 6000 piston, ring, pin and accessory part numbers ready to ship same day. With a 98% order fill rate, you can be confident that JE has the product you need today.

JE "PRO SERIES" Pistons

JE "Pro Series" Piston kits are available for demanding off-road applications and feature purpose-built forging designs that reduce overall piston weight without sacrificing strength or durability. Internal and external strut braces significantly reduce stress on critical areas and remove ring groove flatness for improved ring seal during operation. Get the performance of the top engine builders like Pro Circuit, with the durability required by weekend riders.

JE Pistons

As the 4-stroke specialist, JE offers the original high performance forged piston for your 4-stroke engine. All JE Powersport Piston kits feature a high strength forging design, premium wrist pin, carbon steel wire locks and JE PRO Seal® Piston Rings. Like all JE Pistons, each one is designed, manufactured and inspected at our advanced manufacturing facility in the USA.

COMPARE



FEATURES	JE PRO SERIES	JE Pistons
INTERNAL AND EXTERNAL BRACING	✓	
ULTRA-FLAT RING GROOVES	✓	
OPTIONAL 2 RING DESIGN	✓	
LOW FRICTION SKIRT	✓	
ULTRA LIGHT WEIGHT	✓	
PIN FIT	✓	✓
JE PRO SEAL RINGS INCLUDED	✓	✓
HAND DEBURRED	✓	✓
2618-T6 FORGING	✓	✓
FSR DESIGN	✓	✓
DLC PIN UPGRADE AVAILABLE	✓	✓



THE #1 PISTON OF TOP RACERS



MONSTER ENERGY / PRO CIRCUIT / KAWASAKI



STREET

Aprilia | Ducati | Honda | Kawasaki | Suzuki
Triumph | Victory | Yamaha

From Daytona to Bonneville, JE Pistons continues to set the standards in street bike piston design. JE has recorded wins at Daytona, low ET's on the drag strip and land speed records at Bonneville. JE Pistons is the choice of professional engine builders and racers around the world.



STOTZ RACING



LEADING EDGE KAWASAKI

Champions Choose JE



PISTON KIT #	DISP.	BORE SIZE	OVER SIZE	COMP. RATIO	GRAM WT (G)	SKIRT STYLE	RING #	PIN #	LOCK #	GASKET #	SLEEVE #	FN
--------------	-------	-----------	-----------	-------------	-------------	-------------	--------	-------	--------	----------	----------	----

APRILIA

2008-2013 APRILIA MANA

317220	839cc	88mm	STD	10.5:1	286	FSR	XC8800	866-2050-15-93C	866-063-MW	Call	Deglaze Only	M
317221	839cc	88mm	STD	11.5:1	298	FSR	XC8800	866-2050-15-93C	866-063-MW	Call	Deglaze Only	M
317222	878cc	90mm	+2mm	10.5:1	290	FSR	XC9000	866-2050-15-93C	866-063-MW	Call	Bore & Replate	M
317223	878cc	90mm	+2mm	11.5:1	302	FSR	XC9000	866-2050-15-51C	866-063-MW	Call	Bore & Replate	M

DUCATI

1991-2002 900SS

157597	900cc	92mm	STD	11.5:1	361	Round	XC9200	748-2250-14-95C	748-050-MW	OEM	Deglaze Only	
157598	944cc	94mm	+2mm	11.5:1	396	Round	XC9400	748-2250-14-95C	748-050-MW	Call	Bore & Replate	

1994-1996 916 4V 20mm Pin

130590	955cc	96mm	+2mm	12.0:1	327	Round	J62001-3780	787-2500-12-51C	787-050-MW	JC8564	Bore & Replate	M
--------	-------	------	------	--------	-----	-------	-------------	-----------------	------------	--------	----------------	---

HONDA

2011-2013 CBR 250R / 2013-2016 CRF 250L

308446	250cc	76mm	STD	10.7:1	184	FSR	XG7600	669-1650-14-PTC	669-050-MW	OEM	Deglaze Only	M
308447	250cc	76mm	STD	11.0:1	188	FSR	XG7600	669-1650-14-PTC	669-050-MW	OEM	Deglaze Only	M
308448	256cc	77mm	+1mm	11.0:1	195	FSR	XU7700	669-1650-14-PTC	669-050-MW	Call	Bore & Replate	M
308449	262cc	78mm	+2mm	11.0:1	197	FSR	XG7800	669-1650-14-PTC	669-050-MW	Call	Bore & Replate	M
308450	297cc	83mm	+7mm	11.0:1	222	FSR	XG8300	669-1650-14-PTC	669-050-MW	Call	Sleeve	M

1990-1998 CBR 600F2/F3

144538	637cc	67mm	+2mm	13.5:1	150	Round	XA6700	669-2050-11-52C	669-050-MW	JC8265	Bore & Hone	M
--------	-------	------	------	--------	-----	-------	--------	-----------------	------------	--------	-------------	---

2003-2006 CBR 600RR

255735	600cc	67mm	STD	13.5:1	128	FSR	XA6700	630-1650-12-93C	630-050-MW	Call	Deglaze	
222115	636cc	69mm	+2mm	13.5:1	138	FSR	XA6900	630-1650-12-93C	630-050-MW	JC8706	Bore & Replate	M

2007-2016 CBR 600RR

262276	600cc	67mm	STD	12.6:1	135	FSR	XA6700	591-1650-14-PTC	591-040-MW	Call	Deglaze	
274099	618cc	68mm	+1mm	13.5:1	140	FSR	XA6800	591-1650-14-PTC	591-040-MW	Call	Bore & Replate	
262277	636cc	69mm	+2mm	13.5:1	143	FSR	XA6900	591-1650-14-PTC	591-040-MW	JC8706	Bore & Replate	

1988-1991 HAWK 650NT

157589	696cc	82mm	+3mm	11.0:1	276	Round	XC8200	787-2250-11-93C	787-050-MW	JC8207	Bore & Hone	M
--------	-------	------	------	--------	-----	-------	--------	-----------------	------------	--------	-------------	---

1969-1978 CB 750 (Single Cam)

144539	836cc	65mm	+3mm	10.5:1	151	Round	XC6500	591-2050-11-51C	591-040-MW	JC8397	Bore & Hone	
149295	836cc	65mm	+3mm	12.5:1	166	Round	XC6500	591-2050-10-52C	591-040-MW	JC8397	Bore & Hone	

1992-1995 CBR 900RR

138979	945cc	72mm	+2mm	12.0:1	175	Round	XA7200	669-2050-11-52C	669-050-MW	JC8267	Bore & Hone	M
157587	997cc	74mm	+4mm	12.0:1	184	Round	XA7400	669-2050-11-52C	669-050-MW	JC8268	Call	M

1996-1999 CBR 900RR

138979	945cc	72mm	+1mm	12.0:1	175	Round	XA7200	669-2050-11-52C	669-050-MW	JC8267	Bore & Hone	M
157587	997cc	74mm	+3mm	12.0:1	184	Round	XA7400	669-2050-11-52C	669-050-MW	JC8268	Call	M

2000-2001 CBR 929RR

222114	954cc	75mm	+1mm	12.5:1	171	FSR	XG7500	669-1650-14-PTC	669-050-MW	JC8568	Bore & Replate	
--------	-------	------	------	--------	-----	-----	--------	-----------------	------------	--------	----------------	--

2002-2004 CBR 954RR

222114	954cc	75mm	STD	12.5:1	171	FSR	XG7500	669-1650-14-PTC	669-050-MW	JC8568	Deglaze Only	
--------	-------	------	-----	--------	-----	-----	--------	-----------------	------------	--------	--------------	--

2000-2006 RC 51 (RVT1000R)

184333	999cc	100mm	STD	11.1:1	372	FSR	13011-MCS-305	905-2050-15-52C	905-073-MW	JC8569	Deglaze Only	
--------	-------	-------	-----	--------	-----	-----	---------------	-----------------	------------	--------	--------------	--

1997-2001 VTR 1000

149139	996cc	98mm	STD	11.5:1	385	Round	13011-MBB-305	945-2500-14-51C	945-073-MW	OEM	Deglaze Only	
--------	-------	------	-----	--------	-----	-------	---------------	-----------------	------------	-----	--------------	--

Footnotes | Q = Mini Sprint Kit, L = Limited Availability, T = Accepts Turbo and Nitrous, Y = Pro Mod, M = Made to Order, * = Fits 1mm oversize valves
 ** = Fits 2mm oversize valves, 3 = Must Sleeve Bore and Machine Case, 6 = Must run base spacer plate #JC7121, ■ = Pro Series

PISTON KIT #	DISP.	BORE SIZE	OVER SIZE	COMP. RATIO	GRAM WT (G)	SKIRT STYLE	RING #	PIN #	LOCK #	GASKET #	SLEEVE #	FN
--------------	-------	-----------	-----------	-------------	-------------	-------------	--------	-------	--------	----------	----------	----

HONDA continued

2004-2007 CBR 1000RR

222118	998cc	75mm	STD	13.5:1	177	FSR	XG7500	669-1650-14-PTC	669-050-MW	JC8702	Deglaze Only	
222117	1053cc	77mm	+2mm	13.5:1	188	FSR	XU7700	669-1650-14-PTC	669-050-MW	JC8703	Bore & Replate	

2008-2016 CBR 1000RR

274082	999cc	76mm	STD	13.5:1	184	FSR	XG7600	669-1650-14-PTC	669-050-MW	N/A	Deglaze Only	
300214	1026cc	77mm	+1mm	13.5:1	189	FSR	XU7700	669-1650-14-PTC	669-050-MW	N/A	Bore & Replate	
274083	1052cc	78mm	+2mm	13.5:1	195	FSR	XG7800	669-1650-14-PTC	669-050-MW	N/A	Bore & Replate	

2008-2013 CBR 1000RR AMA HOMOLOGATED SPEC PISTON *Head modification needed

271426*	999cc	76mm	STD	13.5:1	179	Billiet	(OEM Not Included)	669-1650-14-PTC	669-050-MW		Deglaze Only	M
---------	-------	------	-----	--------	-----	---------	--------------------	-----------------	------------	--	--------------	---

1997-2003 CBR 1100XX

153766	1195cc	81mm	+2mm	11.5:1	220	Round	XG8100	748-2250-10-52C	748-050-MW	JC8499	Bore & Replate	
--------	--------	------	------	--------	-----	-------	--------	-----------------	------------	--------	----------------	--

2003-2013 HONDA VTX 1300

321502	1312cc	89.5mm	STD	10.0:1	303	Round	XC8950	787-2250-12-51C	787-050-MW	Call	Deglaze Only	M
321503	1312cc	89.5mm	STD	11.0:1	307	Round	XC8950	787-2250-12-51C	787-050-MW	Call	Deglaze Only	M
321504	1327cc	90mm	+5mm	10.0:1	305	Round	XC9000	787-2250-12-51C	787-050-MW	Call	Bore & Replate	M
321505	1327cc	90mm	+5mm	11.0:1	309	Round	XC9000	787-2250-12-51C	787-050-MW	Call	Bore & Replate	M

2002-2008 HONDA VTX 1800

317225	1795cc	101mm	STD	8.0:1	353	Round	XS10100	945-2500-14-52C	945-073-MW	Call	Deglaze Only	M
317226	1795cc	101mm	STD	11.0:1	392	Round	XS10100	945-2500-14-52C	945-073-MW	Call	Deglaze Only	M

KAWASAKI

1987-2007 NINJA 250R

317554	249cc	62mm	STD	12.0:1	136	Round	XA6200	630-1750-12-93C	630-050-MW	Call	Deglaze Only	M
317555	249cc	62mm	STD	12.5:1	138	Round	XA6200	630-1750-12-93C	630-050-MW	Call	Deglaze Only	M
317556	249cc	62mm	STD	13.0:1	139	Round	XA6200	630-1750-12-93C	630-050-MW	Call	Deglaze Only	M
317557	265cc	64mm	+2mm	12.5:1	150	Round	XA6400	630-1750-12-93C	630-050-MW	Call	Bore & Replate	M
317558	265cc	64mm	+2mm	13.5:1	152	Round	XA6400	630-1750-12-93C	630-050-MW	Call	Bore & Replate	M
317559	282cc	66mm	+4mm	12.5:1	140	FSR	XA6600	630-1650-12-93C	630-050-MW	Call	Sleeve	M
317561	282cc	66mm	+4mm	13.5:1	141	FSR	XA6600	630-1650-12-93C	630-050-MW	Call	Sleeve	M

2008-2012 NINJA 250R (North America) / 2008-2014 NINJA 250R (International Markets)

284686	249cc	62mm	STD	12.0:1	134	Round	XA6200	630-1750-12-93C	630-050-MW	Call	Deglaze Only	
284687	249cc	62mm	STD	12.5:1	136	Round	XA6200	630-1750-12-93C	630-050-MW	Call	Deglaze Only	
284688	249cc	62mm	STD	13.0:1	137	Round	XA6200	630-1750-12-93C	630-050-MW	Call	Deglaze Only	
292754	265cc	64mm	+2mm	12.5:1	148	Round	XA6400	630-1750-12-93C	630-050-MW	Call	Bore & Replate	
300173	265cc	64mm	+2mm	13.5:1	150	Round	XA6400	630-1750-12-93C	630-050-MW	Call	Bore & Replate	
292755	282cc	66mm	+4mm	12.5:1	138	FSR	XA6600	630-1650-12-93C	630-050-MW	Call	Sleeve	
300174	282cc	66mm	+4mm	13.5:1	139	FSR	XA6600	630-1650-12-93C	630-050-MW	Call	Sleeve	

2008-2012 NINJA 250R (North America) / 2008-2014 NINJA 250R (International Markets) - 2 RING

308452	249cc	62mm	STD	13.0:1	131	Round	XA6200	630-1750-12-93C	630-050-MW	Call	Deglaze Only	
308453	265cc	64mm	+2mm	13.5:1	139	Round	XA6400	630-1750-12-93C	630-050-MW	Call	Bore & Replate	

2003-2006 ZX6R

247622	636cc	68mm	STD	13.2:1	134	FSR	XA6800	630-1650-12-93C	630-050-MW	OEM	Deglaze Only	
317207	654cc	69mm	+1mm	13.5:1	139	FSR	XA6900	630-1650-12-93C	630-050-MW	Call	Bore & Replate	M
317208	674cc	70mm	+2mm	13.5:1	144	FSR	XA7000	630-1650-12-93C	630-050-MW	Call	Bore & Replate	M

Footnotes | Q = Mini Sprint Kit, L = Limited Availability, T = Accepts Turbo and Nitrous, Y = Pro Mod, M = Made to Order, * = Fits 1mm oversize valves
 ** = Fits 2mm oversize valves, 3 = Must Sleeve Bore and Machine Case, 6 = Must run base spacer plate #JC7121, ■ = Pro Series



PISTON KIT #	DISP.	BORE SIZE	OVER SIZE	COMP. RATIO	GRAM WT (G)	SKIRT STYLE	RING #	PIN #	LOCK #	GASKET #	SLEEVE #	FN
--------------	-------	-----------	-----------	-------------	-------------	-------------	--------	-------	--------	----------	----------	----

KAWASAKI continued

2007-2008 ZX6R

299042	599cc	67mm	STD	13.5:1	129	FSR	XA6700	591-1650-12-93C	591-040-MW	Call	Deglaze Only	
299043	635cc	69mm	+2mm	13.5:1	135	FSR	XA6900	591-1650-12-93C	591-040-MW	Call	Bore & Replate	

2009-2016 ZX6R

292756	599cc	67mm	STD	13.5:1	129	FSR	XA6700	591-1650-12-93C	591-040-MW	Call	Deglaze Only	
292757	617cc	68mm	+1mm	13.5:1	134	FSR	XA6800	591-1650-12-93C	591-040-MW	Call	Bore & Replate	
292758	635cc	69mm	+2mm	13.5:1	135	FSR	XA6900	591-1650-12-93C	591-040-MW	Call	Bore & Replate	

2006-2012 NINJA 650 R / ER6

284691	649cc	83mm	STD	12.5:1	223	FSR	XG8300	748-2050-14-93C	748-050-MW	Call	Deglaze Only	
284692	649cc	83mm	STD	13.5:1	222	FSR	XG8300	748-2050-14-93C	748-050-MW	Call	Deglaze Only	

2006-2012 NINJA 650 R / ER6 - 2 RING

308454	649cc	83mm	STD	13.5:1	218	FSR	XG8300	748-2050-14-93C	748-050-MW	Call	Deglaze Only	
308455	665cc	84mm	+1mm	13.5:1	226	FSR	JG1001-3307	748-2050-14-93C	748-050-MW	Call	Bore & Hone	M

1991-1995 ZX7R

153764	770cc	72mm	+1mm	12.0:1	180	Round	XA7200	708-2050-10-52C	708-050-MW	JC8274	Bore & Hone	M
--------	-------	------	------	--------	-----	-------	--------	-----------------	------------	--------	-------------	---

1996-2003 ZX7R, 1996 750RR

149299	770cc	74mm	+1mm	13.0:1	188	Round	XA7400	708-2050-10-93C	708-050-MW	JC8428	Bore & Hone	
--------	-------	------	------	--------	-----	-------	--------	-----------------	------------	--------	-------------	--

1994-1997 ZX9R

156026	924cc	74mm	+1mm	13.0:1	188	Round	XA7400	708-2050-12-93C	708-050-MW	JC8272	Bore & Hone	M
--------	-------	------	------	--------	-----	-------	--------	-----------------	------------	--------	-------------	---

1998-2003 ZX9R (Flat Top)

157592	936cc	76.5mm	+1.5mm	12.0:1	208	Round	XG7650	708-2050-12-52C	708-050-MW	JC8515	Bore & Hone	M
--------	-------	--------	--------	--------	-----	-------	--------	-----------------	------------	--------	-------------	---

KZ 900/1000 ALL EX "J" MODEL

137712	1015cc	70mm	STD	10.25:1	193	Round	XC7000	669-2050-12-51C	669-050-MW	OEM	Bore & Hone	
125083	1075cc	72mm	+2mm	8.5:1	195	Round	XC7200	669-2250-11-52C	669-050-MW	JC8154	Bore & Hone	M
125473	1075cc	72mm	+2mm	10.25:1	201	Round	XC7200	669-2050-12-51C	669-050-MW	JC8154	Bore & Hone	
132493	1200cc	76mm	+6mm	10.25:1	220	Round	XC7600	669-2250-12-51C	669-050-MW	JC8158	JE3200	M

1997-2001 ZRX 1100, 1990-2001 ZZR, 1995-1996 GPZ 1100

253283	1080cc	77mm	+1mm	12.0:1	215	Round	XG7700	708-2250-10-52C	708-050-MW	JC8603	Bore & Hone	
253284	1109cc	78mm	+2mm	12.0:1	215	Round	XG7800	708-2250-10-52C	708-050-MW	JC8273	Bore & Hone	

2004-2007 ZX10R

222111	998cc	76mm	STD	13.5:1	175	FSR	XG7600	669-1650-14-PTC	669-050-MW	OEM	Deglaze Only	
222112	1051cc	78mm	+2mm	13.5:1	183	FSR	XG7800	669-1650-14-PTC	669-050-MW	Call	Bore & Replate	
247931	1078cc	79mm	+3mm	13.5:1	185	FSR	XG7900	669-1650-14-PTC	669-050-MW	Call	Bore & Replate	

2008-2012 ZX10R

284718	998cc	76mm	STD	13.5:1	178	FSR	XG7600	669-1650-14-PTC	669-050-MW	OEM	Deglaze Only	
284719	1051cc	78mm	+2mm	13.5:1	186	FSR	XG7800	669-1650-14-PTC	669-050-MW	Call	Bore & Replate	
284720	1078cc	79mm	+3mm	13.5:1	192	FSR	XG7900	669-1650-14-PTC	669-050-MW	Call	Bore & Replate	

1990-2000 ZX11

253283	1080cc	77mm	+1mm	12.0:1	215	Round	XG7700	708-2250-10-52C	708-050-MW	JC8603	Bore & Hone	
253284	1109cc	78mm	+2mm	12.0:1	215	Round	XG7800	708-2250-10-52C	708-050-MW	JC8358	Bore & Hone	

PISTON KIT #	DISP.	BORE SIZE	OVER SIZE	COMP. RATIO	GRAM WT (G)	SKIRT STYLE	RING #	PIN #	LOCK #	GASKET #	SLEEVE #	FN
--------------	-------	-----------	-----------	-------------	-------------	-------------	--------	-------	--------	----------	----------	----

KAWASAKI continued

2001-2006 ZRX1200

284694	1164cc	79mm	STD	8.5:1	234	Round	XG7900	748-2250-14-95C	748-050-MW	N/A	Deglaze Only	
284695	1164cc	79mm	STD	12.5:1	224	Round	XG7900	748-2250-14-95C	748-050-MW	N/A	Deglaze Only	
284696	1224cc	81mm	+2mm	12.5:1	236	Round	XG8100	748-2250-14-95C	748-050-MW	N/A	Bore & Hone	

2000-2005 ZX12R

222108	1198cc	83mm	STD	9.8:1	229	Round	XG8300	827-2250-15-93C	827-063-MW	JC8642	Deglaze Only	
261533	1198cc	83mm	STD	13.0:1	234	FSR	XG8300	827-2050-12-52C	827-050-MW	JC8642	Deglaze Only	
192315	1287cc	86mm	+3mm	13.0:1	260	FSR	XC8600	827-2050-12-93C	827-063-MW	JC8641	Bore & Replate	

2006-2011 ZX14

247619	1352cc	84mm	STD	13.5:1	232	FSR	OEM (Not Included)	787-2050-14-93C	787-050-MW	OEM	Deglaze Only	
247620	1352cc	84mm	STD	9.5:1	248	Round	OEM (Not Included)	787-2250-18-PTC	787-050-MW	OEM	Deglaze Only	
325016	1352cc	84mm	STD	12.5:1	237	FSR	OEM (Not Included)	787-2050-14-93C	787-050-MW	OEM	Deglaze Only	
247621	1417cc	86mm	+2mm	13.5:1	245	FSR	XR8600	787-2050-14-93C	787-050-MW	Call	Bore & Replate	
308401	1417cc	86mm	+2mm	14.0:1	247	FSR	XR8600	787-2050-14-93C	787-050-MW	Call	Bore & Replate	M
308400	1449cc	87mm	+3mm	14.0:1	248	FSR	JG1001-3425	787-2050-14-93C	787-050-MW	Call	Bore & Replate	M

SUZUKI

2001-2003 GSXR 600

222107	617cc	68mm	+1mm	12.5:1	137	FSR	XA6800	551-1650-12-52C	551-040-MW	JC8644	Bore & Replate	
222106	636cc	69mm	+2mm	13.0:1	141	FSR	XA6900	551-1650-12-52C	551-040-MW	JC8645	Bore & Replate	M

2004-2005 GSXR 600

222386	636cc	69mm	+2mm	13.0:1	134	FSR	XA6900	551-1650-12-93C	551-040-MW	Call	Bore & Replate	M
--------	-------	------	------	--------	-----	-----	--------	-----------------	------------	------	----------------	---

2006-2007 GSXR 600

255720	636cc	69mm	+2mm	13.0:1	143	FSR	XA6900	551-1650-12-93C	551-040-MW	Call	Bore & Replate	
--------	-------	------	------	--------	-----	-----	--------	-----------------	------------	------	----------------	--

2008-2012 GSXR 600

308644	599cc	67mm	STD	13.0:1	136	FSR	XA6700	551-1650-12-93C	551-040-MW	Call	Deglaze Only	M
308645	636cc	69mm	+2mm	13.2:1	141	FSR	XA6900	551-1650-12-93C	551-040-MW	Call	Bore and Hone	

1999-2010 SV 650 / DL650 2007-2009 & 2011

324924	650cc	81mm	STD	12.0:1	223	FSR	XC8100	787-2050-10-93C	787-050-MW	Call	Deglaze Only	
324925	650cc	81mm	STD	13.0:1	225	FSR	XC8100	787-2050-10-93C	787-050-MW	Call	Deglaze Only	
169253	677cc	83mm	+2mm	13.0:1	238	Round	XC8300	787-2250-11-93C	787-050-MW	JC8600	Bore and Hone	
284698	677cc	83mm	+2mm	13.0:1	224	FSR	XG8300	787-2050-10-93C	787-050-MW	JC8600	Bore and Hone	

1990-1992 GSXR 750

157594	955cc	79mm	+9mm	12.0:1	218	Round	XC7900	708-2050-12-52C	708-050-MW	JC8463	JE3275*	M
--------	-------	------	------	--------	-----	-------	--------	-----------------	------------	--------	---------	---

1993-1995 GSXR 750 (WATERCOOLED)

138983	907cc	77mm	+7mm	13.0:1	196	Round	XG7700	708-2250-10-52C	708-050-MW	JC8338	JE3200S	M
--------	-------	------	------	--------	-----	-------	--------	-----------------	------------	--------	---------	---

2000-2003 GSXR 750

222103	812cc	75mm	+3mm	12.5:1	172	FSR	XG7500	591-1650-14-PTC	591-040-MW	JC8214	Bore & Replate	L
--------	-------	------	------	--------	-----	-----	--------	-----------------	------------	--------	----------------	---

1994-1997 RF 900

146197	990cc	75mm	+2mm	12.5:1	188	Round	XC7500	748-2050-11-52C	748-050-MW	JC8337	Bore & Hone	M
--------	-------	------	------	--------	-----	-------	--------	-----------------	------------	--------	-------------	---

Footnotes | Q = Mini Sprint Kit, L = Limited Availability, T = Accepts Turbo and Nitrous, Y = Pro Mod, M = Made to Order, * = Fits 1mm oversize valves
 ** = Fits 2mm oversize valves, 3 = Must Sleeve Bore and Machine Case, 6 = Must run base spacer plate #JC7121, ■ = Pro Series

Footnotes | Q = Mini Sprint Kit, L = Limited Availability, T = Accepts Turbo and Nitrous, Y = Pro Mod, M = Made to Order, * = Fits 1mm oversize valves
 ** = Fits 2mm oversize valves, 3 = Must Sleeve Bore and Machine Case, 6 = Must run base spacer plate #JC7121, ■ = Pro Series



PISTON KIT #	DISP.	BORE SIZE	OVER SIZE	COMP. RATIO	GRAM WT (G)	SKIRT STYLE	RING #	PIN #	LOCK #	GASKET #	SLEEVE #	FN
--------------	-------	-----------	-----------	-------------	-------------	-------------	--------	-------	--------	----------	----------	----

SUZUKI continued

2001-2004 GSXR 1000 **Must use JC0001 gasket*

222105*	988cc	73mm	STD	9.8:1	182	Round	XA7300	630-2050-14-95C	630-050-MW	JC0001	Deglaze Only	T,**
215817	988cc	73mm	STD	13.5:1	156	FSR	XA7300	630-1650-14-PTC	630-050-MW	JC8574	Deglaze Only	
213919	1042cc	75mm	+2mm	13.5:1	162	FSR	XG7500	630-1650-14-PTC	630-050-MW	JC8214	Bore & Replate	
325020	1070cc	76mm	+3mm	10.0:1	191	Round	XG7600	630-1650-14-95C	630-050-MW	JC8602	Bore & Replate	
192322	1070cc	76mm	+3mm	13.5:1	180	Round	XG7600	630-2050-14-95C	630-050-MW	JC8602	Bore & Replate	
221407	1070cc	76mm	+3mm	13.5:1	177	FSR	XG7600	630-1650-14-PTC	630-050-MW	JC8602	Bore & Replate	

2005-2008 GSXR 1000 **Must use JC0001 gasket*

254555*	998cc	73.4mm	STD	10.1:1	179	FSR	OEM-12140-41G00	591-1650-14-PTC	591-040-MW	JC0001	Deglaze Only	T,**
317224	998cc	73.4mm	STD	12.5:1	158	FSR	OEM-12140-41G00	591-1650-14-PTC	591-040-MW	Call	Bore & Replate	M
247628	998cc	73.4mm	STD	13.8:1	158	FSR	OEM-12140-41G00	591-1650-14-PTC	591-040-MW	Call	Deglaze Only	
247629	1043cc	75mm	+1.6mm	13.5:1	167	FSR	XG7500	591-1650-14-PTC	591-040-MW	Call	Bore & Replate	
247631	1070cc	76mm	+2.6mm	13.5:1	173	FSR	XG7600	591-1650-14-PTC	591-040-MW	Call	Bore & Replate	

2009-2011 GSXR 1000

284700	999cc	74.5mm	STD	10.1:1	180	FSR	XA7450	591-1650-14-PTC	591-040-MW	Call	Deglaze Only	T
284701	999cc	74.5mm	STD	13.8:1	171	FSR	XA7450	591-1650-14-PTC	591-040-MW	Call	Deglaze Only	
284702	1053cc	76.5mm	+2mm	13.8:1	183	FSR	XG7650	591-1650-14-PTC	591-040-MW	Call	Bore & Replate	

2012-2013 GSXR 1000

317241	999cc	74.5mm	STD	10.1:1	NEW	FSR	XA7450	591-1650-14-PTC	591-040-MW	Call	Deglaze Only	
317242	999cc	74.5mm	STD	13.8:1	NEW	FSR	XA7450	591-1650-14-PTC	591-040-MW	Call	Deglaze Only	
317243	1053cc	76.5mm	+2mm	13.8:1	NEW	FSR	XG7650	591-1650-14-PTC	591-040-MW	Call	Bore & Replate	M

1998-2003 TL1000R

317204	996cc	98mm	STD	13.0:1	338	FSR	XS9800	866-2050-15-52C	866-063-MW	Call	Deglaze Only	M
317205	1036cc	100mm	+2mm	13.0:1	346	FSR	JG3701-3937	866-2050-15-52C	866-063-MW	Call	Bore & Replate	M

1981-1983 GS 1100

125491	1134cc	74mm	+2mm	10.25:1	210	Round	XC7400	708-2250-12-51C	708-050-MW	JC8164	Bore & Hone	M
125490	1170cc	75mm	+3mm	10.25:1	218	Round	XC7500	708-2250-12-51C	708-050-MW	JC8031	Bore & Hone	
128324	1260cc	78mm	+6mm	10.5:1	232	Round	XC7800	708-2250-12-51C	708-050-MW	JC8166	JE3275	M
130299	1260cc	78mm	+6mm	13.5:1	239	Round	XC7800	708-2250-12-52C	708-050-MW	JC8166	JE3275	M
127402	1295cc	79mm	+7mm	13.5:1	227	Round	XC7900	708-2250-10-52C	708-050-MW	JC8167	JE3350	M
129310	1327cc	80mm	+8mm	11.0:1	237	Round	XC8000	708-2250-12-51C	708-050-MW	JC8168	JE3350	M
130301	1394cc	82mm	+10mm	13.5:1	247	Round	XC8200	708-2250-12-52C	708-050-MW	JC8169	JE3450	M
129313	1428cc	83mm	+11mm	11.7:1	254	Round	XC8300	708-2250-12-51C	708-050-MW	JC8170	JE3450	M
135635	1428cc	83mm	+11mm	12.0:1	302	Round	XC8300	708-2350-18-PTC	708-050-MW	JC8170	JE3450	
130302	1428cc	83mm	+11mm	13.5:1	248	Round	XC8300	708-2250-12-52C	708-050-MW	JC8170	JE3450	Y
129315	1500cc	85mm	+13mm	12.0:1	263	Round	XC8500	708-2250-12-52C	708-050-MW	JC8187	JE3600	M
138271	1500cc	85mm	+13mm	14.0:1	272	Round	XC8500	708-2250-14-52C	708-050-MW	JC8187	JE3600	
190680	1500cc	85mm	+13mm	12.5:1	299	Round	XC8500	708-2250-18-PTC	708-050-MW	JC8187	JE3600	Y
146085	1570cc	87mm	+14mm	15.0:1	298	Round	XC8700	708-2250-14-52C	708-050-MW	JC8171	JE3600	

1986-1988 GSXR 1100 / 1988- 1992 GSXR 1100F KATANA / BANDIT

129855	1127cc	78mm	STD	13.0:1	232	Round	XC7800	787-2250-11-93C	787-050-MW	JC8322	Deglaze Only	
127641	1186cc	80mm	+2mm	13.0:1	234	Round	XC8000	787-2250-11-93C	787-050-MW	JC8368	Bore & Hone	M
155544	1201cc	80.5mm	+2.5mm	13.0:1	233	Round	XC8050	787-2250-11-93C	787-050-MW	JC8279	Bore & Hone	M
127642	1216cc	81mm	+3mm	13.0:1	234	Round	XC8100	787-2250-11-93C	787-050-MW	JC8279	Bore & Hone	

Footnotes | Q = Mini Sprint Kit, L = Limited Availability, T = Accepts Turbo and Nitrous, Y = Pro Mod, M = Made to Order, * = Fits 1mm oversize valves
 ** = Fits 2mm oversize valves, 3 = Must Sleeve Bore and Machine Case, 6 = Must run base spacer plate #JC7121, ■ = Pro Series

PISTON KIT #	DISP.	BORE SIZE	OVER SIZE	COMP. RATIO	GRAM WT (G)	SKIRT STYLE	RING #	PIN #	LOCK #	GASKET #	SLEEVE #	FN
--------------	-------	-----------	-----------	-------------	-------------	-------------	--------	-------	--------	----------	----------	----

SUZUKI continued

1986-1988 GSXR 1100 / 1988- 1992 GSXR 1100F KATANA / BANDIT continued

201165	1216cc	81mm	+3mm	11.0:1	235	Round	XC8100	787-2250-11-93C	787-050-MW	JC8279	Bore & Hone	
128885	1246cc	82mm	+4mm	13.0:1	238	Round	XC8200	787-2250-11-93C	787-050-MW	JC8391	JE3450	
127643	1277cc	83mm	+5mm	13.0:1	236	Round	XC8300	787-2250-11-93C	787-050-MW	JC8323	JE3450	M
132495	1277cc	83mm	+5mm	15.0:1	240	Round	XC8300	787-2250-11-93C	787-050-MW	JC8323	JE3450	L
127644	1340cc	85mm	+7mm	13.0:1	251	Round	XC8500	787-2250-11-93C	787-050-MW	JC8340	JE3550-4	M
130894	1340cc	85mm	+7mm	15.0:1	248	Round	XC8500	787-2250-11-93C	787-050-MW	JC8340	JE3550-4	M
127645	1371cc	86mm	+8mm	13.0:1	258	Round	XC8600	787-2250-11-93C	787-050-MW	JC8604	JE3550-4	
128490	1371cc	86mm	+8mm	13.5:1	266	Round	XC8600	787-2250-11-93C	787-050-MW	JC8604	JE3550-4	

1993-1998 GSXR 1100W

131367	1117cc	77mm	+1.5mm	12.3:1	219	Round	XG7700	787-2250-11-93C	787-050-MW	JC8280	Bore & Hone	
155930	1146cc	78mm	+2.5mm	12.8:1	227	Round	XG7800	787-2250-11-93C	787-050-MW	JC8478	Bore & Hone	
129682	1195cc	79.5mm	+4mm	13.0:1	222	Round	XG7950	787-2250-11-93C	787-050-MW	JC8281	JE3290	M

1984-1986 GS 1150

134355	1327cc	80mm	+6mm	11.0:1	232	Round	XC8000	787-2250-18-51C	787-050-MW	JC8168	JE3450	M
134356	1394cc	82mm	+8mm	11.5:1	249	Round	XC8200	787-2250-18-51C	787-050-MW	JC8169	JE3450	L
140457	1428cc	83mm	+9mm	12.0:1	296	Round	XC8300	787-2350-18-PTC	787-050-MW	JC8170	JE3450	Y,M
134360	1428cc	83mm	+9mm	13.5:1	256	Round	XC8300	787-2250-11-93C	787-050-MW	JC8170	JE3450	M
138329	1500cc	85mm	+11mm	14.0:1	263	Round	XC8500	787-2250-14-93C	787-050-MW	JC8187	JE3600	M

1999-2007 GSX 1300R

262286	1299cc	81mm	STD	13.5:1	241	Round	JG1001-3189	787-2250-14-93C	787-050-MW	JC8656	Deglaze Only	
167679	1299cc	81mm	STD	12.3:1	234	Round	XG8100	787-2250-11-93C	787-050-MW	JC8656	Deglaze Only	
167680	1363cc	83mm	+2mm	12.5:1	248	Round	XG8300	787-2250-11-93C	787-050-MW	JC8497	Bore & Replate	
172945	1397cc	84mm	+3mm	12.8:1	244	Round	JG1001-3307	787-2250-11-93C	787-050-MW	JC8621	Bore & Replate	
262287	1397cc	84mm	+3mm	13.5:1	234	FSR	JG1001-3307	787-2050-14-93C	787-050-MW	JC8621	Bore & Replate	
222101	1429cc	85mm	+4mm	12.5:1	249	Round	JG1001-3346	787-2250-11-93C	787-050-MW	JC8622	Bore & Replate	
262288	1429cc	85mm	+4mm	13.5:1	241	FSR	JG1001-3346	787-2050-14-93C	787-050-MW	JC8622	Bore & Replate	

1999-2007 GSX 1300R TURBO TALL DECK (.080" Base spacer needed)

213918	1299cc	81mm	STD	8.7:1	222	Round	XG8100	787-2250-14-93C	787-050-MW	JC8656	Deglaze Only	M,T
222102	1363cc	83mm	+2mm	8.7:1	234	Round	JG1001-3268	787-2250-14-93C	787-050-MW	JC8497	Bore & Replate	M,T,6

1999-2007 GSX 1300R TURBO TALL DECK (.080" Base spacer needed / "Big Boost" applications)

299834	1299cc	81mm	STD	8.7:1	246	FSR	XG8100	787-2050-18-PTC	787-050-MW	JC8656	Deglaze Only	T
300268	1363cc	83mm	+2mm	8.7:1	260	FSR	JG1001-3268	787-2250-14-93C	787-050-MW	JC8497	Bore & Replate	T

2008-2014 GSX 1300R

284734	1340cc	81mm	STD	13.0:1	223	Round	JG1001-3189	708-2250-14-93C	708-050-MW	JC8656	Deglaze Only	
274085	1340cc	81mm	STD	13.5:1	225	Round	JG1001-3189	708-2250-12-52C	708-050-MW	JC8656	Deglaze Only	
274086	1407cc	83mm	+2mm	13.5:1	225	FSR	JG1001-3268	708-2050-14-93C	708-050-MW	JC8497	Bore & Replate	
274087	1441cc	84mm	+3mm	13.5:1	234	FSR	JG1001-3307	708-2050-14-93C	708-050-MW	JC8621	Bore & Replate	
274088	1441cc	84mm	+3mm	14.5:1	228	FSR	JG1001-3307	708-2050-14-93C	708-050-MW	JC8621	Bore & Replate	
284735	1476cc	85mm	+4mm	13.5:1	237	FSR	JG1001-3346	708-2050-14-93C	708-050-MW	JC8622	Bore & Replate	
284736	1476cc	85mm	+4mm	14.5:1	237	FSR	JG1001-3346	708-2050-14-93C	708-050-MW	JC8622	Bore & Replate	

2008-2014 GSX 1300R TURBO TALL DECK (.080" Base spacer needed)

274089	1340cc	81mm	STD	9.0:1	238	Round	JG1001-3189	708-2250-18-PTC	708-050-MW	JC8656	Deglaze Only	T
274090	1407cc	83mm	+2mm	9.0:1	250	Round	JG1001-3268	708-2250-18-PTC	708-050-MW	JC8497	Bore & Replate	T

2008-2014 GSX 1300R TURBO TALL DECK (.080" Base spacer needed / "Big Boost" applications)

300270	1340cc	81mm	STD	9.0:1	247	FSR	JG1001-3189	708-2050-16-93C	708-050-MW	JC8656	Deglaze Only	T
300269	1407cc	83mm	+2mm	9.0:1	258	FSR	JG1001-3268	708-2050-16-93C	708-050-MW	JC8497	Bore & Replate	T

Footnotes | Q = Mini Sprint Kit, L = Limited Availability, T = Accepts Turbo and Nitrous, Y = Pro Mod, M = Made to Order, * = Fits 1mm oversize valves
 ** = Fits 2mm oversize valves, 3 = Must Sleeve Bore and Machine Case, 6 = Must



PISTON KIT #	DISP.	BORE SIZE	OVER SIZE	COMP. RATIO	GRAM WT (G)	SKIRT STYLE	RING #	PIN #	LOCK #	GASKET #	SLEEVE #	FN
--------------	-------	-----------	-----------	-------------	-------------	-------------	--------	-------	--------	----------	----------	----

TRIUMPH

2004-2013 ROCKET 3

317209	2249cc	101.6mm	STD	10.5:1	361	FSR	JG3101-4000-7	866-2250-15-51C	866-063-MW	Call	Deglaze Only	M
317210	2249cc	101.6mm	STD	11.7:1	385	FSR	JG3101-4000-7	866-2250-15-51C	866-063-MW	Call	Deglaze Only	M

VICTORY

VICTORY V92

317189	1510cc	3.8188	STD	10.5:1	353	FSR	XS9700	866-2050-18-51C	866-063-MW	Call	Deglaze Only	M
--------	--------	--------	-----	--------	-----	-----	--------	-----------------	------------	------	--------------	---

YAMAHA

2001-2005 YZF-R6

247959	618cc	66.5mm	+1mm	12.5:1	129	FSR	XA6650	630-1650-12-93C	630-050-MW	Call	Bore & Replate	
221324	637cc	67.5mm	+2mm	12.5:1	127	FSR	XA6750	630-1650-12-93C	630-050-MW	JC8575	Bore & Replate	

2006-2014 YZF-R6

262317	599cc	67mm	STD	13.1:1	130	FSR	XA6700	591-1650-14-PTC	591-040-MW	Call	Deglaze Only	
262318	635cc	69mm	+2mm	13.1:1	142	FSR	XA6900	591-1650-14-PTC	591-040-MW	Call	Bore & Replate	

1989-1996 FZR 1000 / YZF 1000

138328	1040cc	77mm	+1.5mm	12.0:1	194	Round	XG7700	748-2050-11-52C	748-050-MW	JC8283	Bore & Hone	
--------	--------	------	--------	--------	-----	-------	--------	-----------------	------------	--------	-------------	--

1998-2003 YZF-R1 / FZ1 / RX1 **Gasket does not fit RX1*

262326	998cc	74mm	STD	9.0:1	191	Round	XA7400	669-2050-14-52C	669-050-MW	JC8562*	Deglaze Only	T
247958	998cc	74mm	STD	10.0:1	182	Round	XA7400	669-2050-14-52C	669-050-MW	JC8562*	Deglaze Only	T
174998	998cc	74mm	STD	13.0:1	177	Round	OEM (not included)	669-2050-11-52C	669-050-MW	JC8562*	Deglaze Only	M
222096	998cc	74mm	STD	13.0:1	163	FSR	XA7400	669-1650-14-PTC	669-050-MW	JC8562*	Deglaze Only	M
221392	1029cc	75mm	+1mm	13.0:1	156	FSR	XG7500	669-1650-14-PTC	669-050-MW	JC8562*	Bore & Replate	M
222095	1052cc	76mm	+2mm	13.0:1	171	FSR	XG7600	669-1650-14-PTC	669-050-MW	JC8563*	Resleeve	

2004-2006 R1

222099	998cc	77mm	STD	13.5:1	183	FSR	XU7700	669-1650-14-PTC	669-050-MW	JC8686	Deglaze Only	
222098	1051cc	79mm	+2mm	13.5:1	191	FSR	XG7900	669-1650-14-PTC	669-050-MW	JC8695	Bore & Replate	

2007-2008 R1

262541	998cc	77mm	STD	13.8:1	196	FSR	XU7700	669-1650-14-PTC	669-050-MW	Call	Deglaze Only	
--------	-------	------	-----	--------	-----	-----	--------	-----------------	------------	------	--------------	--

2009-2014 R1

290126	998cc	78mm	STD	13.5:1	201	FSR	OEM (not included)	669-1650-14-PTC	669-050-MW	Call	Deglaze Only	
--------	-------	------	-----	--------	-----	-----	--------------------	-----------------	------------	------	--------------	--

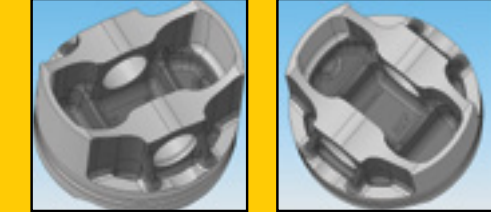
Technical Showcase

Product: Hayabusa Turbo FSR

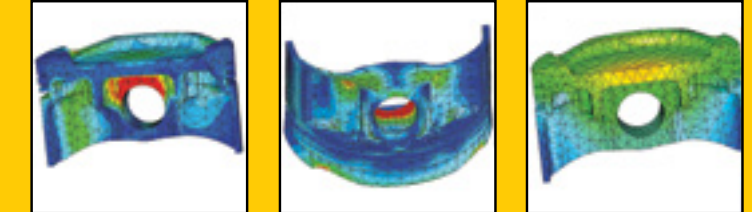
Forging Number: 985MD

Today, JE Pistons are used more often in turbocharged Suzuki Hayabusa engines than any other piston. We set the standard in high strength, high performance design. As the market has evolved, we determined it was time to step up our design and again to exceed the expectations of our high horsepower customers. Below is a very brief summary of our process as we progress from concept to completed design.


DESIGN




ANALYSIS




PROTOTYPE/ TESTING



EVALUATION



FINISHED PRODUCT



See page 13 for our complete line of Hayabusa pistons!



OFFROAD

Honda | Kawasaki | KTM | Suzuki | Yamaha

What pistons are you running in your race bike? Since the switch to 4-stroke engines, JE's accomplishments in AMA Supercross and Motocross racing exceed that of all other piston manufacturers. In fact, JE Pistons have powered a Supercross or Motocross Lites Champion every year since 2006!



PISTON KIT #	DISP.	BORE SIZE	OVER SIZE	COMP. RATIO	GRAM WT (G)	SKIRT STYLE	RING #	PIN #	LOCK #	GASKET #	SLEEVE #	FN
--------------	-------	-----------	-----------	-------------	-------------	-------------	--------	-------	--------	----------	----------	----

GAS GAS

2010-2015 EC250F

247937	249cc	77mm	STD	13.5:1	167	FSR	JC3501-3031	630-1650-12-93C	630-050-MW	OEM	Deglaze Only	
274182	249cc	77mm	STD	14.0:1	170	FSR	JC3501-3031	630-1650-12-93C	630-050-MW	OEM	Deglaze Only	

2013-2015 EC450F

247944	449cc	95mm	STD	12.5:1	296	FSR	XS9500	708-2050-16-93C	708-050-MW	OEM	Deglaze Only	
209289	449cc	95mm	STD	13.5:1	302	FSR	XS9500	708-2050-16-93C	708-050-MW	OEM	Deglaze Only	
222087	478cc	98mm	+3mm	12.5:1	293	FSR	XS9800	708-2050-16-93C	708-050-MW	OEM	Bore & Replate	

HONDA

2007-2012 CRF 150R

262278	149cc	66mm	STD	12.0:1	112	FSR	JC3801-2598	551-1650-12-93C	551-040-MW	OEM	Deglaze Only	
262279	149cc	66mm	STD	12.5:1	112	FSR	JC3801-2598	551-1650-12-93C	551-040-MW	OEM	Deglaze Only	
262280	159cc	68mm	+2mm	12.0:1	119	FSR	JC3801-2677	551-1650-12-93C	551-040-MW	Call	Bore & Replate	L
262281	159cc	68mm	+2mm	13.0:1	119	FSR	JC3801-2677	551-1650-12-93C	551-040-MW	Call	Bore & Replate	M
274177	170cc	70mm	+4mm	13.0:1	126	FSR	JC3801-2756	551-1650-12-93C	551-040-MW	Call	Call	

1986-2004 XR 250 / 1991-1996 XRL 250

127918	270cc	76mm	+3mm	10.5:1	208	Round	XC7600	669-2250-12-51C	669-050-MW	JC7146	Bore & Hone	
131243	277cc	77mm	+4mm	10.5:1	215	Round	XC7700	669-2250-12-51C	669-050-MW	JC7146	Bore & Hone	

2004-2009 CRF 250R / 2004-2017 CRF250X - PRO SERIES

247607	249cc	78mm	STD	13.2:1	150	FSR	JG7001-3071	630-1650-12-93C	630-050-MW	OEM	Deglaze Only	
274178	249cc	78mm	STD	13.7:1	150	FSR	JG7001-3071	630-1650-12-93C	630-050-MW	OEM	Deglaze Only	
325013	256cc	79mm	+1mm	13.5:1	153	FSR	JC3401-3110	630-1650-12-93C	630-050-MW	Call	Sleeve	
221772	262cc	80mm	+2mm	13.5:1	164	FSR	JC3401-3150	630-1650-12-93C	630-050-MW	Call	Sleeve	

2010-2015 CRF 250R - PRO SERIES

291515	249cc	76.8mm	STD	13.2:1	147	FSR	JG4801-3023	630-1650-12-93C	630-050-MW	Call	Deglaze Only	
291516	249cc	76.8mm	STD	13.8:1	149	FSR	JG4801-3023	630-1650-12-93C	630-050-MW	Call	Deglaze Only	
291517	249cc	76.8mm	STD	14.2:1	151	FSR	JG4801-3023	630-1650-12-93C	630-050-MW	Call	Deglaze Only	
315167	264cc	79mm	+2.2mm	13.5:1	158	FSR	JC3401-3110	630-1650-12-93C	630-050-MW	Call	Bore & Replate	M
315168	270cc	80mm	+3.2mm	13.5:1	163	FSR	JG7001-3150	630-1650-12-93C	630-050-MW	Call	Bore & Replate	M

2016-2017 CRF 250R - PRO SERIES

344512	249cc	76.8mm	STD	13.5:1	NEW	FSR	JG4801-3023	630-1500-14-9DC	630-050-MW	Call	Deglaze Only	
344513	249cc	76.8mm	STD	14.0:1	NEW	FSR	JG4801-3023	630-1500-14-9DC	630-050-MW	Call	Deglaze Only	
344514	249cc	76.8mm	STD	14.5:1	NEW	FSR	JG4801-3023	630-1500-14-9DC	630-050-MW	Call	Deglaze Only	

2013-2016 CRF 250L DUAL SPORT

308446	250cc	76mm	STD	10.7:1	184	FSR	XG7600	669-1650-14-PTC	669-050-MW	OEM	Deglaze Only	M
308447	250cc	76mm	STD	11.0:1	188	FSR	XG7600	669-1650-14-PTC	669-050-MW	OEM	Deglaze Only	
308448	256cc	77mm	+1mm	11.0:1	195	FSR	XU7700	669-1650-14-PTC	669-050-MW	Call	Bore & Replate	M
308449	262cc	78mm	+2mm	11.0:1	197	FSR	XG7800	669-1650-14-PTC	669-050-MW	Call	Bore & Replate	M
308450	297cc	83mm	+7mm	11.0:1	222	FSR	XG8300	669-1650-14-PTC	669-050-MW	Call	Sleeve	M

Footnotes | Q = Mini Sprint Kit, L = Limited Availability, T = Accepts Turbo and Nitrous, Y = Pro Mod, M = Made to Order, * = Fits 1mm oversize valves
 ** = Fits 2mm oversize valves, 3 = Must Sleeve Bore and Machine Case, 6 = Must run base spacer plate #JC7121, ■ = Pro Series



PISTON KIT #	DISP.	BORE SIZE	OVER SIZE	COMP. RATIO	GRAM WT (G)	SKIRT STYLE	RING #	PIN #	LOCK #	GASKET #	SLEEVE #	FN
--------------	-------	-----------	-----------	-------------	-------------	-------------	--------	-------	--------	----------	----------	----

HONDA continued

1996-2004 XR 400

132697	397cc	85mm	STD	10.5:1	263	Round	XC8500	787-2250-18-51C	787-050-MW	JC7279	Deglaze Only	
199655	397cc	85mm	STD	12.0:1	263	Round	XC8500	787-2250-18-51C	787-050-MW	JC7825	Bore & Hone	
132699	406cc	86mm	+1mm	10.6:1	294	Round	XC8600	787-2350-14-51C	787-050-MW	JC7279	Bore & Hone	
133889	415cc	87mm	+2mm	10.8:1	294	Round	XC8700	787-2350-14-51C	787-050-MW	JC7296	Bore & Hone	
199656	415cc	87mm	+2mm	12.0:1	285	Round	XC8700	787-2350-14-51C	787-050-MW	JC7924	Bore & Hone	
177240	426cc	88mm	+3mm	11.0:1	298	Round	XC8800	787-2350-14-51C	787-050-MW	JC7826	Bore & Hone	
177239	426cc	88mm	+3mm	13.0:1	318	Round	XC8800	787-2350-14-51C	787-050-MW	JC7296	Bore & Hone	
247611	430cc	88.5mm	+3.5mm	10.8:1	269	Round	XC8850	787-2250-18-51C	787-050-MW	JC7826	JE3730M	
208552	435cc	89mm	+4mm	12.0:1	268	Round	XC8900	787-2250-18-51C	787-050-MW	JC7826	JE3730M	
247612	435cc	89mm	+4mm	10.8:1	273	Round	XC8900	787-2250-14-93C	787-050-MW	JC7826	JE3730M	

2002-2008 CRF 450R / 2005-2017 CRF 450X

274755	449cc	96mm	STD	12.5:1	273	FSR	ZV9600	748-2050-14-93C	748-050-MW	JC7845	Deglaze Only	**
274756	449cc	96mm	STD	13.5:1	282	FSR	ZV9600	748-2050-16-93C	748-050-MW	JC7845	Deglaze Only	M,**
274757	459cc	97mm	+1mm	12.5:1	269	FSR	ZS9700	748-2050-16-93C	748-050-MW	JC7824	Bore & Replate	**
274760	468cc	98mm	+2mm	12.5:1	285	FSR	XS9800	748-2050-16-93C	748-050-MW	JC7824	Bore & Replate	**
274758	478cc	99mm	+3mm	12.5:1	293	FSR	ZV9900	748-2050-16-93C	748-050-MW	JC7849	Bore & Replate	**
274759	488cc	100mm	+4mm	12.5:1	303	FSR	ZV10000	748-2050-16-93C	748-050-MW	Call	Sleeve	**

2002-2008 CRF 450R / 2005-2017 CRF 450X - PRO SERIES

261965	449cc	96mm	STD	12.5:1	247	FSR	ZV9600	748-2050-16-93C	748-050-MW	JC7845	Deglaze Only	**
261966	449cc	96mm	STD	13.5:1	255	FSR	ZV9600	748-2050-16-93C	748-050-MW	JC7845	Deglaze Only	**
291514	449cc	96mm	STD	14.2:1	256	FSR	ZV9600	748-2050-16-93C	748-050-MW	JC7845	Deglaze Only	**

2009-2012 CRF 450R - PRO SERIES

284666	449cc	96mm	STD	12.5:1	252	FSR	ZV9600	748-2050-16-93C	748-050-MW	OEM	Deglaze Only	**
284667	449cc	96mm	STD	13.5:1	253	FSR	ZV9600	748-2050-16-93C	748-050-MW	OEM	Deglaze Only	**
291513	449cc	96mm	STD	14.0:1	256	FSR	ZV9600	748-2050-16-93C	748-050-MW	OEM	Deglaze Only	**
284668	468cc	98mm	+2mm	12.5:1	258	FSR	XS9800	748-2050-16-93C	748-050-MW	Call	Bore & Replate	**
284669	478cc	99mm	+3mm	12.5:1	264	FSR	ZV9900	748-2050-16-93C	748-050-MW	Call	Bore & Replate	**
284670	488cc	100mm	+4mm	12.5:1	268	FSR	ZV10000	748-2050-16-93C	748-050-MW	Call	Sleeve	**

2013-2016 CRF 450R - PRO SERIES

315158	449cc	96mm	STD	12.5:1	250	FSR	ZV9600	748-2050-16-93C	748-050-MW	Call	Deglaze Only	
315159	449cc	96mm	STD	13.0:1	255	FSR	ZV9600	748-2050-16-93C	748-050-MW	Call	Deglaze Only	
315160	449cc	96mm	STD	13.5:1	257	FSR	ZV9600	748-2050-16-93C	748-050-MW	Call	Deglaze Only	
315161	449cc	96mm	STD	14.0:1	262	FSR	ZV9600	748-2050-16-93C	748-050-MW	Call	Bore & Replate	
315162	478cc	99mm	+3mm	12.5:1	260	FSR	ZV9900	748-2050-16-93C	748-050-MW	Call	Bore & Replate	
315163	488cc	100mm	+4mm	12.5:1	263	FSR	ZV10000	748-2050-16-93C	748-050-MW	Call	Bore & Replate	
315164	497cc	101mm	+5mm	12.5:1	268	FSR	ZS10100	748-2050-16-93C	748-050-MW	Call	Bore & Replate	

2017 CRF 450R, CRF 450RX - PRO SERIES

345054	449cc	96mm	STD	13.5:1	NEW	FSR	ZV9600	748-2050-16-9DC	748-050-MW	Call	Deglaze Only	
345055	449cc	96mm	STD	14.0:1	NEW	FSR	ZV9600	748-2050-16-9DC	748-050-MW	Call	Deglaze Only	
345056	449cc	96mm	STD	14.5:1	NEW	FSR	ZV9600	748-2050-16-9DC	748-050-MW	Call	Deglaze Only	

1985-2001 XR 600R

128995	629cc	100mm	+3mm	10.5:1	380	Round	XH10000	945-2850-14-51C	945-073-MW	JC7212	Bore & Hone	
128996	640cc	101mm	+4mm	10.6:1	397	Round	XH10100	945-2850-14-51C	945-073-MW	JC7239	Bore & Hone	
128998	654cc	102mm	+5mm	10.8:1	395	Round	XH10200	945-2850-14-51C	945-073-MW	JC7239	Bore & Hone	

PISTON KIT #	DISP.	BORE SIZE	OVER SIZE	COMP. RATIO	GRAM WT (G)	SKIRT STYLE	RING #	PIN #	LOCK #	GASKET #	SLEEVE #	FN
--------------	-------	-----------	-----------	-------------	-------------	-------------	--------	-------	--------	----------	----------	----

HONDA continued

1993-2016 XR 650L

292329	644cc	100mm	STD	9.0:1	390	Round	XS10000	945-2850-14-51C	945-073-MW	JC7959	Deglaze	
292330	650cc	101mm	1mm	9.0:1	389	Round	XS10100	945-2850-14-51C	945-073-MW	JC7151	Bore & hone	
292331	657cc	102mm	2mm	9.0:1	396	Round	XS10200	945-2850-14-51C	945-073-MW	JC7151	Bore & hone	
300275	644cc	100mm	STD	10.5:1	398	Round	XS10000	945-2850-14-51C	945-073-MW	JC7959	Deglaze Only	
300276	650cc	101mm	+1mm	10.5:1	396	Round	XS10100	945-2850-14-51C	945-073-MW	JC7151	Bore & Hone	
300277	657cc	102mm	+2mm	10.5:1	408	Round	XS10200	945-2850-14-51C	945-073-MW	JC7151	Bore & Hone	
130682	644cc	100mm	STD	11.25:1	399	Round	XH10000	945-2850-14-51C	945-073-MW	JC7959	Deglaze Only	
138978	650cc	101mm	+1mm	11.25:1	416	Round	XH10100	945-2850-14-51C	945-073-MW	JC7151	Bore & Hone	
139550	657cc	102mm	+2mm	11.25:1	406	Round	XH10200	945-2850-14-51C	945-073-MW	JC7151	Bore & Hone	

2000-2007 XR 650R

190862	649cc	100mm	STD	11.0:1	394	Round	XH10000	905-2500-15-51C	905-073-MW	JC7681	Deglaze Only	
--------	-------	-------	-----	--------	-----	-------	---------	-----------------	------------	--------	--------------	--

HUSABERG

2013 FE 250

247623	249cc	76mm	STD	13.0:1	157	FSR	JC3401-2992	630-1650-12-93C	630-050-MW	OEM	Deglaze Only	
312479	276cc	80mm	+4mm	13.5:1	161	FSR	JG7001-3150	633-1650-12-93C	630-050-MW	Call	Bore & Replate	

2014 FE 250

323895	250cc	78mm	STD	13.5:1	152	FSR	JG7001-3071	630-1500-14-93C	630-050-MW	OEM	Deglaze Only	
--------	-------	------	-----	--------	-----	-----	-------------	-----------------	------------	-----	--------------	--

2013-2014 FE 350

300267	349cc	88mm	STD	13.6:1	203	FSR	YD8800	708-1750-14-PTC	708-050-MW	OEM	Deglaze Only	
327145	349cc	88mm	STD	14.5:1	NEW	FSR	YD8800	708-1750-14-PTC	708-050-MW	OEM	Deglaze Only	

2013-2014 FE 450

323897	450cc	95mm	STD	12.6:1	249	FSR	ZS9500	748-2050-16-93C	748-050-MW	OEM	Deglaze Only	
323898	450cc	95mm	STD	13.5:1	259	FSR	ZS9500	748-2050-16-93C	748-050-MW	OEM	Deglaze Only	
325287	450cc	95mm	STD	14.5:1	264	FSR	ZS9500	748-2050-16-93c	748-050-mw	OEM	Deglaze Only	

2013-2014 FE 501

323900	510cc	95mm	STD	11.8:1	NEW	FSR	ZS9500	748-2050-16-93C	748-050-MW	OEM	Deglaze Only	
323901	510cc	95mm	STD	12.5:1	NEW	FSR	ZS9500	748-2050-16-93C	748-050-MW	OEM	Deglaze Only	

HUSQVARNA

2014-2015 FC 250 / 2014-2016 FE 250

323895	250cc	78mm	STD	13.5:1	152	FSR	JG7001-3071	630-1500-14-93C	630-050-MW	OEM	Deglaze Only	
--------	-------	------	-----	--------	-----	-----	-------------	-----------------	------------	-----	--------------	--

2014-2015 FC 350 / 2014-2016 FE 350

300267	349cc	88mm	STD	13.6:1	203	FSR	YD8800	708-1750-14-PTC	708-050-MW	OEM	Deglaze Only	
327145	349cc	88mm	STD	14.5:1	NEW	FSR	YD8800	708-1750-14-PTC	708-050-MW	OEM	Deglaze Only	

2016-2017 FC 350 / 2017 FX 350

300267	349cc	88mm	STD	14:01	203	FSR	YD8800	708-1750-14-PTC	708-050-MW	OEM	Deglaze Only	
--------	-------	------	-----	-------	-----	-----	--------	-----------------	------------	-----	--------------	--

2014-2015 FC450 / 2014-2016 FE 450 / 2017 FX 450

323897	450cc	95mm	STD	12.6:1	249	FSR	ZS9500	748-2050-16-93C	748-050-MW	OEM	Deglaze Only	
323898	450cc	95mm	STD	13.5:1	259	FSR	ZS9500	748-2050-16-93C	748-050-MW	OEM	Deglaze Only	
325287	450cc	95mm	STD	14.5:1	264	FSR	ZS9500	748-2050-16-93c	748-050-mw	OEM	Deglaze Only	

2014-2016 FE 501

323900	510cc	95mm	STD	11.8:1	NEW	FSR	ZS9500	748-2050-16-93C	748-050-MW	OEM	Deglaze Only	
323901	510cc	95mm	STD	12.5:1	NEW	FSR	ZS9500	748-2050-16-93C	748-050-MW	OEM	Deglaze Only	

Footnotes | Q = Mini Sprint Kit, L = Limited Availability, T = Accepts Turbo and Nitrous, Y = Pro Mod, M = Made to Order, * = Fits 1mm oversize valves
 ** = Fits 2mm oversize valves, 3 = Must Sleeve Bore and Machine Case, 6 = Must run base spacer plate #JC7121, ■ = Pro Series

Footnotes | Q = Mini Sprint Kit, L = Limited Availability, T = Accepts Turbo and Nitrous, Y = Pro Mod, M = Made to Order, * = Fits 1mm oversize valves
 ** = Fits 2mm oversize valves, 3 = Must Sleeve Bore and Machine Case, 6 = Must run base spacer plate #JC7121, ■ = Pro Series



POWERSPORTS OFFROAD

POWERSPORTS OFFROAD



PISTON KIT #	DISP.	BORE SIZE	OVER SIZE	COMP. RATIO	GRAM WT (G)	SKIRT STYLE	RING #	PIN #	LOCK #	GASKET #	SLEEVE #	FN
--------------	-------	-----------	-----------	-------------	-------------	-------------	--------	-------	--------	----------	----------	----

KAWASAKI

2002-2016 KLX 110

221775	135cc	58mm	+5mm	10.5:1	117	Round	JC3601-2283	512-1535-10-5XC	512-040-AW	JC7749	Resleeve	M
--------	-------	------	------	--------	-----	-------	-------------	-----------------	------------	--------	----------	---

2004-2005 KX 250F - PRO SERIES

243642	249cc	77mm	STD	13.5:1	148	FSR	JC3301-3031	630-1650-12-93C	630-050-MW	JC7211	Deglaze Only	
247605	262cc	79mm	+2mm	13.0:1	168	FSR	JC3401-3110	630-1650-12-93C	630-050-MW	Call	Bore & Replate	L

2006-2009 KX 250F - PRO SERIES

247596	249cc	77mm	STD	13.8:1	156	FSR	JC3501-3031	630-1650-12-93C	630-050-MW	Call	Deglaze Only	
274179	249cc	77mm	STD	14.0:1	155	FSR	JC3401-3031	630-1650-12-93C	630-050-MW	Call	Deglaze Only	
264015	262cc	79mm	+2mm	13.0:1	161	FSR	JC3401-3110	630-1650-12-93C	630-050-MW	Call	Bore & Replate	
247598	270cc	80mm	+3mm	13.5:1	174	FSR	JG7001-3150	630-1650-12-93C	630-050-MW	Call	Sleeve	

2010-2014 KX 250F - PRO SERIES

292759	249cc	77mm	STD	13.5:1	150	FSR	JC3501-3031	630-1650-12-93C	630-050-MW	Call	Deglaze Only	
292760	249cc	77mm	STD	14.0:1	148	FSR	JC3501-3031	630-1650-12-93C	630-050-MW	Call	Deglaze Only	

2017 KX 250F - PRO SERIES

345199	249cc	77mm	STD	13.7:1	NEW	FSR	JC3501-3031	630-1500-14-9DC	630-050-MW	Call	Deglaze Only	
345200	249cc	77mm	STD	14.0:1	NEW	FSR	JC3501-3031	630-1500-14-9DC	630-050-MW	Call	Deglaze Only	
345201	270cc	80mm	STD	14.0:1	NEW	FSR	JG7001-3150	630-1500-14-9DC	630-050-MW	Call	Deglaze Only	

2003 KLX 400

180297	398cc	90mm	STD	12.0:1	287	Round	XC9000	787-2350-14-51C	787-050-MW	JC7688	Deglaze Only	
208659	398cc	90mm	STD	13.5:1	288	Round	XC9000	787-2350-10-93C	787-050-MW	JC7688	Deglaze Only	
199657	416cc	92mm	+2mm	12.0:1	279	FSR	XC9200	787-2050-16-93C	787-050-MW	JC7688	Bore & Replate	M
183051	434cc	94mm	+4mm	12.0:1	303	FSR	XC9400	787-2050-16-93C	787-050-MW	JC7806	Bore & Replate	
243651	450cc	95.5mm	+5.5mm	13.0:1	311	FSR	JC2801-3760	787-2050-16-93C	787-050-MW	C7963	Bore & Replate	

2003 KLX 400 - PRO SERIES

261539	450cc	95.5mm	+5.5mm	13.5:1	262	FSR	ZV9550	787-2050-16-93C	787-050-MW	Call	Bore & Replate	
--------	-------	--------	--------	--------	-----	-----	--------	-----------------	------------	------	----------------	--

2006-2014 and 2016-2017 KX450F (Does not fit 2015)

284852	449cc	96mm	STD	12.8:1	272	FSR	ZV9600	748-2050-16-93C	748-050-MW	Call	Deglaze Only	
284853	449cc	96mm	STD	13.5:1	275	FSR	ZV9600	748-2050-16-93C	748-050-MW	Call	Deglaze Only	
284854	469cc	98mm	+2mm	12.8:1	279	FSR	ZV9800	748-2050-16-93C	748-050-MW	Call	Bore & Replate	M

2006-2014 and 2016-2017 KX450F - PRO SERIES (Does not fit 2015)

284855	449cc	96mm	STD	12.8:1	258	FSR	ZV9600	748-2050-16-93C	748-050-MW	Call	Deglaze Only	
284856	449cc	96mm	STD	13.5:1	264	FSR	ZV9600	748-2050-16-93C	748-050-MW	Call	Deglaze Only	

KTM

2005-2012 250 SX-F / 2007-2013 250 XC-F / 2007-2013 250 XCF-W

247623	249cc	76mm	STD	13.0:1	157	FSR	JC3401-2992	630-1650-12-93C	630-050-MW	OEM	Deglaze Only	
312479	276cc	80mm	+4mm	13.5:1	161	FSR	JG7001-3150	633-1650-12-93C	630-050-MW	Call	Bore & Replate	

2013-2015 KTM 250 SX-F

323895	250cc	78mm	STD	13.5:1	NEW	FSR	JG7001-3071	630-1500-14-93C	630-050-MW	OEM	Deglaze	
--------	-------	------	-----	--------	-----	-----	-------------	-----------------	------------	-----	---------	--

2011-2015 350 SX-F / 2012-2015 350 EXC / 2012-2015 350 XCF-W / 2012-2015 350 Freeride

300267	349cc	88mm	STD	13.6:1	203	FSR	YD8800	708-1750-14-PTC	708-050-MW	OEM	Deglaze Only	
327145	349cc	88mm	STD	14.5:1	NEW	FSR	YD8800	708-1750-14-PTC	708-050-MW	OEM	Deglaze Only	

2003-2006 450 SX/ 2003-2006 450 XC

221781	449cc	95mm	STD	12.5:1	280	FSR	ZS9500	787-2050-16-93C	787-050-MW	JC7454	Deglaze Only	
221780	449cc	95mm	STD	13.5:1	277	FSR	ZS9500	787-2050-16-93C	787-050-MW	JC7454	Deglaze Only	

PISTON KIT #	DISP.	BORE SIZE	OVER SIZE	COMP. RATIO	GRAM WT (G)	SKIRT STYLE	RING #	PIN #	LOCK #	GASKET #	SLEEVE #	FN
--------------	-------	-----------	-----------	-------------	-------------	-------------	--------	-------	--------	----------	----------	----

KTM

2007-2012 450 SX-F / 2007-2010 XC-F - PRO SERIES

260955	449cc	97mm	STD	12.5:1	256	FSR	OEM	748-2050-16-93C	748-050-MW	OEM	Deglaze Only	
260956	449cc	97mm	STD	13.0:1	257	FSR	OEM	748-2050-16-93C	748-050-MW	OEM	Deglaze Only	M
260957	449cc	97mm	STD	13.5:1	261	FSR	OEM	748-2050-16-93C	748-050-MW	OEM	Deglaze Only	
308474	449cc	97mm	STD	12.5:1	260	FSR	ZS9700	748-2050-16-93C	748-050-MW	OEM	Deglaze Only	M
308475	449cc	97mm	STD	13.0:1	262	FSR	ZS9700	748-2050-16-93C	748-050-MW	OEM	Deglaze Only	M
308476	449cc	97mm	STD	13.5:1	265	FSR	ZS9700	748-2050-16-93C	748-050-MW	OEM	Deglaze Only	M

2013-2015 KTM 450 SX-F / 2012-2016 450 EXC / XC-F / XC-W

323897	450cc	95mm	STD	12.6:1	249	FSR	ZS9500	748-2050-16-93C	748-050-MW	OEM	Deglaze	
323898	450cc	95mm	STD	13.5:1	259	FSR	ZS9500	748-2050-16-93C	748-050-MW	OEM	Deglaze	
325287	450cc	95mm	STD	14.5:1	264	FSR	ZS9500	748-2050-16-93c	748-050-MW	OEM	Deglaze	

2012-2016 KTM 500 EXC / XC-W

323900	500cc	95mm	STD	11.8:1	NEW	FSR	ZS9500	748-2050-16-93C	748-050-MW	OEM	Deglaze	
323901	500cc	95mm	STD	12.5:1	NEW	FSR	ZS9500	748-2050-16-93C	748-050-MW	OEM	Deglaze	

2000-2002 520 SX / EXC 2003-2010 525 SX / EXC

221777	511cc	95mm	STD	13.0:1	259	FSR	ZS9500	787-2050-16-93C	787-050-MW	JC7454	Deglaze Only	
221776	543cc	98mm	+3mm	13.0:1	297	FSR	XS9800	787-2050-16-93C	787-050-MW	JC7461	Sleeve	M

2000-2002 520 SX / EXC 2003-2010 525 SX / EXC - PRO SERIES

274173	511cc	95mm	STD	12.5:1	270	FSR	ZS9500	787-2050-16-93C	787-050-MW	Call	Deglaze Only	
274174	511cc	95mm	STD	13.0:1	275	FSR	ZS9500	787-2050-16-93C	787-050-MW	Call	Deglaze Only	
274175	511cc	95mm	STD	13.5:1	279	FSR	ZS9500	787-2050-16-93C	787-050-MW	Call	Deglaze Only	

SUZUKI

2003-2005 DRZ 110

221775	135cc	58mm	+5mm	10.5:1	117	Round	JC3601-2283	512-1535-10-5XC	512-040-AW	JC7749	Deglaze Only	M
--------	-------	------	------	--------	-----	-------	-------------	-----------------	------------	--------	--------------	---

2004-2006 RMZ 250 - PRO SERIES

243642	249cc	77mm	STD	13.5:1	161	FSR	JC3301-3031	630-1650-12-93C	630-050-MW	JC7211	Deglaze Only	
247605	262cc	79mm	+2mm	13.0:1	168	FSR	JC3401-3110	630-1650-12-93C	630-050-MW	JC7221	Bore & Replate	L

2007-2009 RMZ 250 - PRO SERIES

261540	249cc	77mm	STD	13.5:1	153	FSR	JC3501-3031	630-1650-12-93C	630-050-MW	JC7211	Deglaze Only	
261541	249cc	77mm	STD	14.0:1	153	FSR	JC3501-3031	630-1650-12-93C	630-050-MW	JC7211	Deglaze Only	
261542	262cc	79mm	+2mm	13.0:1	164	FSR	JC3401-3110	630-1650-12-93C	630-050-MW	JC7221	Bore & Replate	
261543	270cc	80mm	+3mm	13.0:1	170	FSR	JG7001-3150	630-1650-12-93C	630-050-MW	JC7221	Sleeve	

2010-2017 RMZ 250 - PRO SERIES

299244	249cc	77mm	STD	13.5:1	150	FSR	JC3501-3031	630-1650-12-93C	630-050-MW	JC7211	Deglaze Only	
299245	249cc	77mm	STD	14.2:1	151	FSR	JC3501-3031	630-1650-12-93C	630-050-MW	JC7211	Deglaze Only	

1990-1999 DR 350R/S

130928	441cc	89mm	+10mm	10.5:1	278	Round	XC8900	787-2350-14-51C	787-050-MW	JC7264	Sleeve	
--------	-------	------	-------	--------	-----	-------	--------	-----------------	------------	--------	--------	--

Footnotes | Q = Mini Sprint Kit, L = Limited Availability, T = Accepts Turbo and Nitrous, Y = Pro Mod, M = Made to Order, * = Fits 1mm oversize valves
 ** = Fits 2mm oversize valves, 3 = Must Sleeve Bore and Machine Case, 6 = Must run base spacer plate #JC7121, ■ = Pro Series

Footnotes | Q = Mini Sprint Kit, L = Limited Availability, T = Accepts Turbo and Nitrous, Y = Pro Mod, M = Made to Order, * = Fits 1mm oversize valves
 ** = Fits 2mm oversize valves, 3 = Must Sleeve Bore and Machine Case, 6 = Must run base spacer plate #JC7121, ■ = Pro Series



POWERSPORTS OFFROAD

POWERSPORTS OFFROAD



PISTON KIT #	DISP.	BORE SIZE	OVER SIZE	COMP. RATIO	GRAM WT (G)	SKIRT STYLE	RING #	PIN #	LOCK #	GASKET #	SLEEVE #	FN
--------------	-------	-----------	-----------	-------------	-------------	-------------	--------	-------	--------	----------	----------	----

SUZUKI continued

2000-2016 DR-Z 400

180297	398cc	90mm	STD	12.0:1	287	Round	XC9000	787-2350-10-93C	787-050-MW	JC7688	Deglaze Only	
208659	398cc	90mm	STD	13.5:1	288	Round	XC9000	787-2350-10-93C	787-050-MW	JC7688	Deglaze Only	
199657	416cc	92mm	+2mm	12.0:1	279	FSR	XC9200	787-2050-14-93C	787-050-MW	JC7688	Bore & Replate	M
183051	434cc	94mm	+4mm	12.0:1	303	FSR	XC9400	787-2050-14-93C	787-050-MW	JC7806*	Bore & Replate	
243651	450cc	95.5mm	+5.5mm	13.0:1	311	FSR	JC2801-3760	787-2050-14-93C	787-050-MW	C7963	Bore & Replate	

2000-2016 DR-Z 400 - PRO SERIES 2 RING

261539	450cc	95.5mm	+5.5mm	13.5:1	262	FSR	ZV9550	787-2050-16-93C	787-050-MW	C7963	Bore & Replate	
--------	-------	--------	--------	--------	-----	-----	--------	-----------------	------------	-------	----------------	--

2005-2007 RM-Z 450

247591	450cc	95.5mm	STD	12.8:1	269	FSR	ZV9550	748-2050-14-93C	748-050-MW	OEM	Deglaze Only	
255627	450cc	95.5mm	STD	13.5:1	275	FSR	ZV9550	748-2050-14-93C	748-050-MW	OEM	Deglaze Only	
247594	474cc	98mm	+2.5mm	12.8:1	272	FSR	ZV9800	748-2050-16-93C	748-050-MW	Call	Bore & Replate	M
247593	493cc	100mm	+4.5mm	12.8:1	279	FSR	ZV10000	748-2050-14-93C	748-050-MW	Call	Sleeve	M

2005-2007 RM-Z 450 - PRO SERIES

261534	450cc	95.5mm	STD	12.8:1	253	FSR	ZV9550	748-2050-14-93C	748-050-MW	OEM	Deglaze Only	M
261535	450cc	95.5mm	STD	13.5:1	256	FSR	ZV9550	748-2050-14-93C	748-050-MW	OEM	Deglaze Only	

2008-2012 RM-Z 450 - PRO SERIES

274180	449cc	96.0mm	STD	13.0:1	264	FSR	ZV9600	748-2050-16-93C	748-050-MW	OEM	Deglaze Only	
274181	449cc	96.0mm	STD	13.5:1	258	FSR	ZV9600	748-2050-16-93C	748-050-MW	OEM	Deglaze Only	
306332	449cc	96.0mm	STD	14.5:1	271	FSR	ZV9600	748-2050-16-93C	748-050-MW	OEM	Deglaze Only	M

2013-2017 RM-Z 450 - PRO SERIES

317238	449cc	96.0mm	STD	13.0:1	260	FSR	ZV9600	748-2050-16-93C	748-050-MW	OEM	Deglaze Only	M
317239	449cc	96.0mm	STD	13.5:1	258	FSR	ZV9600	748-2050-16-93C	748-050-MW	OEM	Deglaze Only	M
317240	449cc	96.0mm	STD	14.5:1	266	FSR	ZV9600	748-2050-16-93C	748-050-MW	OEM	Deglaze Only	M

1996-2011 DR 650

136633	650cc	100mm	STD	10.5:1	375	Round	XH10000	905-2500-15-51C	905-073-MW	OEM	Deglaze Only	
--------	-------	-------	-----	--------	-----	-------	---------	-----------------	------------	-----	--------------	--

YAMAHA

2001-2004 YZ 250F / WR250F - 5 VALVE

221798	249cc	77mm	STD	13.5:1	169	FSR	JC3301-3031	630-1650-12-93C	630-050-MW	OEM	Deglaze Only	
247943	262cc	79mm	+2mm	13.0:1	181	FSR	JC3401-3110	630-1650-12-93C	630-050-MW	JC7904	Bore & Replate	L
221797	270cc	80mm	+3mm	13.0:1	184	FSR	JC3401-3150	630-1650-12-93C	630-050-MW	JC7904	Sleeve	M

2005-2013 YZ 250/WR 250F - 5 VALVE

247937	249cc	77mm	STD	13.5:1	167	FSR	JC3501-3031	630-1650-12-93C	630-050-MW	OEM	Deglaze Only	
274182	249cc	77mm	STD	14.0:1	170	FSR	JC3501-3031	630-1650-12-93C	630-050-MW	OEM	Deglaze Only	
247939	262cc	79mm	+2mm	13.0:1	175	FSR	JC3401-3110	630-1650-12-93C	630-050-MW	Call	Bore & Replate	
247940	270cc	80mm	+3mm	13.0:1	178	FSR	JG7001-3150	630-1650-12-93C	630-050-MW	JC7904	Sleeve	M

2014-2016 YAMAHA YZ 250F / 2015-2016 YZ250FX / 2015-2016 WR250F - PRO SERIES (2 RING)

323556	250cc	77mm	STD	13.5:1	149	FSR	JG4801-3031	630-1500-14-93C	630-050-MW	OEM	Deglaze	
323557	250cc	77mm	STD	14.0:1	152	FSR	JG4801-3031	630-1500-14-93C	630-050-MW	OEM	Deglaze	
323558	250cc	77mm	STD	14.5:1	154	FSR	JG4801-3031	630-1500-14-93C	630-050-MW	OEM	Deglaze	

PISTON KIT #	DISP.	BORE SIZE	OVER SIZE	COMP. RATIO	GRAM WT (G)	SKIRT STYLE	RING #	PIN #	LOCK #	GASKET #	SLEEVE #	FN
--------------	-------	-----------	-----------	-------------	-------------	-------------	--------	-------	--------	----------	----------	----

YAMAHA continued

1998-2000 YZ 400F / 1998-2000 WR 400F

157595	399cc	92mm	STD	13.5:1	252	FSR	XC9200	708-2050-16-93C	708-050-MW	JC7400	Deglaze Only	
157596	417cc	94mm	+2mm	13.5:1	265	FSR	XC9400	708-2050-16-93C	708-050-MW	JC7400	Bore & Replate	L

2000-2002 YZ 426 / 2000-2002 WR 426F

175000	426cc	95mm	STD	13.5:1	275	FSR	XS9500	708-2050-16-93C	748-050-MW	JC7689	Deglaze Only	
175001	446cc	97mm	+2mm	13.5:1	278	FSR	XS9700	708-2050-16-93C	748-050-MW	JC7470	Bore & Replate	M

2003-2004 YZ 450F / 2003-2004 WR 450F

247944	449cc	95mm	STD	12.5:1	296	FSR	XS9500	708-2050-16-93C	708-050-MW	JC7947	Deglaze Only	
209289	449cc	95mm	STD	13.5:1	302	FSR	XS9500	708-2050-16-93C	708-050-MW	JC7947	Deglaze Only	
222087	478cc	98mm	+3mm	12.5:1	293	FSR	XS9800	708-2050-16-93C	708-050-MW	JC7787	Bore & Replate	

2005-2009 YZ450F / 2005-2015 WR450F

247625	449cc	95mm	STD	12.8:1	287	FSR	XS9500	708-2050-16-93C	708-050-MW	OEM	Deglaze Only	**
247626	449cc	95mm	STD	13.5:1	288	FSR	XS9500	708-2050-16-93C	708-050-MW	OEM	Deglaze Only	**
247627	468cc	97mm	+2mm	13.0:1	299	FSR	XS9700	708-2050-16-93C	708-050-MW	JC3064	Bore & Replate	M,**
247942	478cc	98mm	+3mm	13.0:1	288	FSR	XS9800	708-2050-16-93C	708-050-MW	JC3068	Bore & Replate	**
262519	498cc	100mm	+5mm	12.5:1	315	FSR	XS10000	708-2050-16-93C	708-050-MW	Call	Sleeve	M,**

2005-2009 YZ450F / 2005-2015 WR450F - PRO SERIES (3 RING)

274183	449cc	95mm	STD	12.8:1	250	FSR	XS9500	708-2050-16-93C	708-050-MW	OEM	Deglaze Only	
274184	449cc	95mm	STD	13.5:1	254	FSR	XS9500	708-2050-16-93C	708-050-MW	OEM	Deglaze Only	

2005-2009 YZ450F / 2005-2015 WR450F - PRO SERIES (2 RING)

261544	449cc	95mm	STD	12.8:1	246	FSR	ZS9500	708-2050-16-93C	708-050-MW	OEM	Deglaze Only	M,**
261545	449cc	95mm	STD	13.5:1	248	FSR	ZS9500	708-2050-16-93C	708-050-MW	OEM	Deglaze Only	**

2010-2013 YAMAHA YZ450F - PRO-SERIES (3 RING)

291507	449cc	97mm	STD	12.8:1	268	FSR	XS9700	708-2050-16-93C	708-050-MW	OEM	Deglaze Only	
291508	449cc	97mm	STD	13.5:1	273	FSR	XS9700	708-2050-16-93C	708-050-MW	OEM	Deglaze Only	
291509	449cc	97mm	STD	14.0:1	275	FSR	XS9700	708-2050-16-93C	708-050-MW	OEM	Deglaze Only	

2010-2013 YAMAHA YZ450F - PRO-SERIES (2 RING)

291510	449cc	97mm	STD	12.8:1	260	FSR	ZS9700	708-2050-16-93C	708-050-MW	OEM	Deglaze Only	
291511	449cc	97mm	STD	13.5:1	267	FSR	ZS9700	708-2050-16-93C	708-050-MW	OEM	Deglaze Only	
291512	449cc	97mm	STD	14.0:1	268	FSR	ZS9700	708-2050-16-93C	708-050-MW	OEM	Deglaze Only	

2014-2017 YAMAHA YZ 450F / 2016-2017 YZ 450FX / 2016-2017 WR 450F - PRO-SERIES (3 RING)

324910	450cc	97mm	STD	12.8:1	268	FSR	XS9700	708-2050-16-93C	787-050-MW	OEM	Deglaze	
324911	450cc	97mm	STD	13.5:1	273	FSR	XS9700	708-2050-16-93C	787-050-MW	OEM	Deglaze	
324912	450cc	97mm	STD	14.0:1	275	FSR	XS9700	708-2050-16-93C	787-050-MW	OEM	Deglaze	

2014-2017 YAMAHA YZ 450F / 2016-2017 YZ 450FX / 2016-2017 WR 450F - PRO SERIES (2 RING)

324913	450cc	97mm	STD	12.8:1	260	FSR	ZS9700	708-2050-16-93C	787-050-MW	OEM	Deglaze	
324914	450cc	97mm	STD	13.5:1	267	FSR	ZS9700	708-2050-16-93C	787-050-MW	OEM	Deglaze	
324915	450cc	97mm	STD	14.0:1	268	FSR	ZS9700	708-2050-16-93C	787-050-MW	OEM	Deglaze	

1976-1981 TT/XT/SR 500

130798	540cc	90mm	+3mm	11.0:1	342	Round	XC9000	787-2350-14-51C	787-050-MW	C7252	Bore & Hone	
--------	-------	------	------	--------	-----	-------	--------	-----------------	------------	-------	-------------	--

1984-1996 TT/XT 600

138330	621cc	97mm	+2mm	11.5:1	372	Round	XH9700	866-2500-15-51C	866-063-MW	JC7213	Bore & Hone	
--------	-------	------	------	--------	-----	-------	--------	-----------------	------------	--------	-------------	--

Footnotes | Q = Mini Sprint Kit, L = Limited Availability, T = Accepts Turbo and Nitrous, Y = Pro Mod, M = Made to Order, * = Fits 1mm oversize valves
 ** = Fits 2mm oversize valves, 3 = Must Sleeve Bore and Machine Case, 6 = Must run base spacer plate #JC7121, ■ = Pro Series

Footnotes | Q = Mini Sprint Kit, L = Limited Availability, T = Accepts Turbo and Nitrous, Y = Pro Mod, M = Made to Order, * = Fits 1mm oversize valves
 ** = Fits 2mm oversize valves, 3 = Must Sleeve Bore and Machine Case, 6 = Must run base spacer plate #JC7121, ■ = Pro Series



ATV / UTV

Arctic Cat | Bombardier/Can Am | Honda
John Deere | Kawasaki | KTM | Polaris | Suzuki
Yamaha

JE has developed Pro Series FSR forgings for all terrain vehicles that are dedicated to a specific engine type. These evolutionary forgings allow for reduced overall weight while maintaining strength. With 70 years of racing experience, JE has forged ahead to bring the finest pistons available in the market today.



PISTON KIT #	DISP.	BORE SIZE	OVER SIZE	COMP. RATIO	GRAM WT (G)	SKIRT STYLE	RING #	PIN #	LOCK #	GASKET #	SLEEVE #	FN
--------------	-------	-----------	-----------	-------------	-------------	-------------	--------	-------	--------	----------	----------	----

ARCTIC CAT

2004-2008 400DVX

180297	398cc	90mm	STD	12.0:1	287	Round	XC9000	787-2350-14-93C	787-050-MW	Call	Deglaze Only	
208659	398cc	90mm	STD	13.5:1	288	Round	XC9000	787-2350-14-93C	787-050-MW	Call	Deglaze Only	
199657	416cc	92mm	+2mm	12.0:1	279	FSR	XC9200	787-2050-16-93C	787-050-MW	JC7688	Bore & Replate	M
183051	434cc	94mm	+4mm	12.0:1	303	FSR	XC9400	787-2050-16-93C	787-050-MW	JC7806	Bore & Replate	
243651	450cc	95.5mm	+5.5mm	13.0:1	311	FSR	JC2801-3760	787-2050-16-93C	787-050-MW	C7963	Bore & Replate	

2004-2008 400DVX - PRO SERIES

261539	450cc	95.5mm	+5.5mm	13.5:1	266	FSR	ZV9550	787-2050-14-93C	787-050-MW	Call	Bore & Replate	
--------	-------	--------	--------	--------	-----	-----	--------	-----------------	------------	------	----------------	--

2012-2014 ARCTIC CAT 1000i WILD CAT

317191	951cc	92mm	STD	8.5:1	289	FSR	JG1001-3622	787-2050-16-93C	787-050-MW	Call	Deglaze Only	M
317192	951cc	92mm	STD	9.5:1	291	FSR	JG1001-3622	787-2050-16-93C	787-050-MW	Call	Deglaze Only	
317193	951cc	92mm	STD	10.5:1	293	FSR	JG1001-3622	787-2050-16-93C	787-050-MW	Call	Deglaze Only	M
317194	951cc	92mm	STD	11.5:1	305	FSR	JG1001-3622	787-2050-16-93C	787-050-MW	Call	Deglaze Only	
317195	951cc	92mm	STD	12.5:1	315	FSR	JG1001-3622	787-2050-16-93C	787-050-MW	Call	Deglaze Only	
317196	994cc	94mm	+2mm	9.5:1	295	FSR	JG1001-3701	787-2050-16-93C	787-050-MW	Call	Bore & Replate	M
317197	994cc	94mm	+2mm	10.5:1	297	FSR	JG1001-3701	787-2050-16-93C	787-050-MW	Call	Bore & Replate	M
317198	994cc	94mm	+2mm	11.5:1	310	FSR	JG1001-3701	787-2050-16-93C	787-050-MW	Call	Bore & Replate	M
317199	994cc	94mm	+2mm	12.5:1	321	FSR	JG1001-3701	787-2050-16-93C	787-050-MW	Call	Bore & Replate	M

BOMBARDIER / CAN AM

2008-2014 DS 450 - PRO SERIES (3 RING)

274185	449cc	97mm	STD	12.5:1	320	FSR	XS9700	787-2050-16-93C	787-050-MW	Call	Deglaze Only	
274186	449cc	97mm	STD	13.0:1	324	FSR	XS9700	787-2050-16-93C	787-050-MW	Call	Deglaze Only	

2008-2014 DS 450 - PRO SERIES (2 RING)

274187	449cc	97mm	STD	12.5:1	297	FSR	XS9700	787-2050-16-93C	787-050-MW	Call	Deglaze Only	
274188	449cc	97mm	STD	13.0:1	301	FSR	XS9700	787-2050-16-93C	787-050-MW	Call	Deglaze Only	
300213	449cc	97mm	STD	13.7:1	305	FSR	ZS9700	787-2050-16-93C	787-050-MW	Call	Deglaze Only	M

2002-2003 DS 650

209283	651cc	100mm	STD	11.5:1	373	FSR	XS10000	866-2050-15-51C	866-063-MW	OEM	Deglaze Only	
221844	720cc	105mm	+5mm	11.5:1	422	FSR	J70001-4130-5	866-2250-15-51C	866-063-MW	Call	JE4325B	

2003-2013 RENEGADE 400 / OUTLANDER 400

317810	400cc	91mm	STD	11.5:1	330	Round	JG1001-3583	787-2350-14-51C	787-050-MW	Call	Deglaze Only	
317811	421cc	93mm	+2mm	11.5:1	338	Round	JG1001-3661	787-2350-14-51C	787-050-MW	Call	Bore & Hone	
317812	421cc	93mm	+2mm	13.0:1	NEW	FSR	JG1001-3661	787-2050-14-93C	787-050-MW	Call	Bore & Hone	**

2006-2015 RENEGADE 800 / OUTLANDER 800

292761	800cc	91mm	STD	11.5:1	330	Round	JG1001-3583	787-2350-14-51C	787-050-MW	Call	Deglaze Only	
292762	843cc	93mm	+2mm	11.5:1	338	Round	JG1001-3661	787-2350-14-51C	787-050-MW	Call	Bore & Hone	
300183	843cc	93mm	+2mm	13.0:1	NEW	FSR	JG1001-3661	787-2050-14-93C	787-050-MW	Call	Bore & Hone	**

2011-2015 COMMANDER 1000 X

308411	976cc	91mm	STD	9.0:1	315	FSR	JG1001-3583	866-2050-15-93C	866-063-MW	Call	Deglaze Only	** , M
308412	976cc	91mm	STD	10.2:1	320	FSR	JG1001-3583	866-2050-15-93C	866-063-MW	Call	Deglaze Only	** , M
308413	976cc	91mm	STD	11.0:1	324	FSR	JG1001-3583	866-2050-15-93C	866-063-MW	Call	Deglaze Only	** , M
308414	976cc	91mm	STD	12.5:1	333	FSR	JG1001-3583	866-2050-15-93C	866-063-MW	Call	Deglaze Only	**
308415	1018cc	93mm	+2mm	12.5:1	377	FSR	JG1001-3661	866-2050-15-93C	866-063-MW	Call	Bore & Hone	**

2014-2015 CAN AM MAVERICK 1000

324951	976cc	91mm	STD	9.0:1	316	FSR	JG1001-3583	866-2250-15-51C	866-063-MW	OEM	Deglaze Only	
324952	976cc	91mm	STD	12.0:1	317	FSR	JG1001-3583	866-2250-15-51C	866-063-MW	OEM	Deglaze Only	
324953	976cc	91mm	STD	12.5:1	314	FSR	JG1001-3583	866-2250-15-51C	866-063-MW	OEM	Deglaze Only	
324954	976cc	91mm	STD	13.0:1	313	FSR	JG1001-3583	866-2250-15-51C	866-063-MW	OEM	Deglaze Only	

Footnotes | Q = Mini Sprint Kit, L = Limited Availability, T = Accepts Turbo and Nitrous, Y = Pro Mod, M = Made to Order, * = Fits 1mm oversize valves
** = Fits 2mm oversize valves, 3 = Must Sleeve Bore and Machine Case, 6 = Must run base spacer plate #JC7121, = Pro Series



POWERSPORTS **ATV / UTV**

PISTON KIT #	DISP.	BORE SIZE	OVER SIZE	COMP. RATIO	GRAM WT (G)	SKIRT STYLE	RING #	PIN #	LOCK #	GASKET #	SLEEVE #	FN
--------------	-------	-----------	-----------	-------------	-------------	-------------	--------	-------	--------	----------	----------	----

HONDA

2001-2008 TRX 250 EX

221768	229cc	69mm	+5mm	11.5:1	173	Round	XA6900	591-2050-11-51C	591-040-MW	Call	Bore & Hone	M
--------	-------	------	------	--------	-----	-------	--------	-----------------	------------	------	-------------	---

1992-2008 TRX 300 EX

275073	297cc	76mm	+2mm	11.5:1	219	Round	XC7600	669-2050-12-51C	669-050-MW	Call	Bore & Hone	
221833	330cc	80mm	+6mm	11.5:1	235	Round	XC8000	669-2250-12-51C	669-050-MW	JC7525	Sleeve & MC	

1999-2008 TRX 400 EX / 2009-2014 TRX 400X

132697	397cc	85mm	STD	10.5:1	263	Round	XC8500	787-2250-18-51C	787-050-MW	JC7279	Deglaze Only	
199655	397cc	85mm	STD	12.0:1	263	Round	XC8500	787-2250-18-51C	787-050-MW	JC7825	Bore & Hone	
132699	406cc	86mm	+1mm	10.6:1	294	Round	XC8600	787-2350-14-51C	787-050-MW	JC7279	Bore & Hone	
133889	415cc	87mm	+2mm	10.8:1	294	Round	XC8700	787-2350-14-51C	787-050-MW	JC7296	Bore & Hone	
199656	415cc	87mm	+2mm	12.0:1	285	Round	XC8700	787-2350-14-51C	787-050-MW	JC7924	Bore & Hone	
177240	426cc	88mm	+3mm	11.0:1	298	Round	XC8800	787-2350-14-51C	787-050-MW	C7826	Bore & Hone	
177239	426cc	88mm	+3mm	13.0:1	318	Round	XC8800	787-2350-14-51C	787-050-MW	JC7296	Bore & Hone	
247611	430cc	88.5mm	+3.5mm	10.8:1	269	Round	XC8850	787-2250-18-51C	787-050-MW	JC7826	JE3730M	
247612	435cc	89mm	+4mm	10.8:1	273	Round	XC8900	787-2250-14-93C	787-050-MW	JC7826	JE3730M	
208552	435cc	89mm	+4mm	12.0:1	268	Round	XC8900	787-2250-18-51C	787-050-MW	JC7826	JE3730M	

2004-2005 TRX 450R

221767	449cc	94mm	STD	13.0:1	317	FSR	JG1101-3701	827-2050-15-93C	827-063-MW	JC3043	Deglaze Only	
262285	449cc	94mm	STD	12.0:1	300	FSR	JG1101-3701	827-2050-15-93C	827-063-MW	JC3043	Deglaze Only	
221771	449cc	94mm	STD	11.5:1	311	FSR	JG1101-3701	827-2050-15-93C	827-063-MW	JC3043	Deglaze Only	
221770	469cc	96mm	+2mm	13.0:1	334	FSR	JG5001-3780	827-2050-15-93C	827-063-MW	JC3080	Bore & Replate	
221834	500cc	99mm	+5mm	12.0:1	305	FSR	JG5001-3898	827-2050-15-93C	827-063-MW	JC3079	Replate /Sleeve	

2004-2005 TRX 450R - PRO SERIES (3 RING)

284679	449cc	94mm	STD	12.5:1	279	FSR	JG1101-3701	827-2050-15-93C	827-050-MW	JC3043	Deglaze Only	
284680	449cc	94mm	STD	13.0:1	290	FSR	JG1101-3701	827-2050-15-93C	827-050-MW	JC3043	Deglaze Only	
284681	449cc	94mm	STD	13.8:1	297	FSR	JG1101-3701	827-2050-15-93C	827-050-MW	JC3043	Deglaze Only	

2004-2005 TRX 450R - PRO SERIES (2 RING)

261546	449cc	94mm	STD	12.5:1	269	FSR	JG4201-3701	827-2050-15-93C	827-050-MW	JC3043	Deglaze Only	
261547	449cc	94mm	STD	13.8:1	279	FSR	JG4201-3701	827-2050-15-93C	827-050-MW	JC3043	Deglaze Only	

2006-2014 TRX 450R

247613	449cc	96mm	STD	12.8:1	291	FSR	JG5001-3780	748-2050-16-93C	748-050-MW	OEM	Deglaze Only	
247614	449cc	96mm	STD	13.5:1	295	FSR	JG5001-3780	748-2050-16-93C	748-050-MW	OEM	Deglaze Only	
247615	468cc	98mm	+2mm	13.0:1	300	FSR	XS9800	748-2050-16-93C	748-050-MW	Call	Bore & Replate	
247616	487cc	100mm	+4mm	13.0:1	312	FSR	XS10000	748-2050-16-93C	748-050-MW	Call	Sleeve	

2006-2014 TRX 450R - PRO SERIES (3 RING)

274189	449cc	96mm	STD	12.8:1	274	FSR	JG5001-3780	748-2050-16-93C	748-050-MW	OEM	Deglaze Only	
274190	449cc	96mm	STD	13.5:1	276	FSR	JG5001-3780	748-2050-16-93C	748-050-MW	OEM	Deglaze Only	
325026	477cc	99mm	+3mm	12.5:1	289	FSR	JG5001-3898	748-2050-16-93C	748-050-MW		Bore & Replate	M
325027	477cc	99mm	+3mm	13.5:1	294	FSR	JG5001-3898	748-2050-16-93C	748-050-MW		Bore & Replate	M

2006-2014 TRX 450R - PRO SERIES (2 RING)

262283	449cc	96mm	STD	12.8:1	254	FSR	ZV9600	748-2050-16-93C	748-050-MW	OEM	Deglaze Only	
262284	449cc	96mm	STD	13.5:1	260	FSR	ZV9600	748-2050-16-93C	748-050-MW	OEM	Deglaze Only	
325028	477cc	99mm	+3mm	12.5:1	274	FSR	ZV9900	748-2050-16-93C	748-050-MW		Bore & Replate	M
325029	477cc	99mm	+3mm	13.5:1	279	FSR	ZV9900	748-2050-16-93C	748-050-MW		Bore & Replate	M

2003-2005 TRX 650, Rincon

222094	650cc	100mm	STD	12.5:1	413	FSR	XS10000	905-2050-15-52C	905-073-MW	OEM	Deglaze Only	
--------	-------	-------	-----	--------	-----	-----	---------	-----------------	------------	-----	--------------	--

2008-2012 TRX 700XX

308416	686cc	102mm	STD	11.0:1	372	FSR	XS10200	945-2250-15-51C	945-073-MW	OEM	Deglaze Only	M
308417	686cc	102mm	STD	12.0:1	384	FSR	XS10200	945-2250-15-51C	945-073-MW	OEM	Deglaze Only	M
308418	713cc	104mm	+2mm	12.0:1	398	FSR	J99001-4090-5	945-2250-15-51C	945-073-MW	Call	Call	M

Footnotes | Q = Mini Sprint Kit, L = Limited Availability, T = Accepts Turbo and Nitrous, Y = Pro Mod, M = Made to Order, * = Fits 1mm oversize valves
 ** = Fits 2mm oversize valves, 3 = Must Sleeve Bore and Machine Case, 6 = Must run base spacer plate #JC7121, = Pro Series

POWERSPORTS **ATV / UTV**



PISTON KIT #	DISP.	BORE SIZE	OVER SIZE	COMP. RATIO	GRAM WT (G)	SKIRT STYLE	RING #	PIN #	LOCK #	GASKET #	SLEEVE #	FN
--------------	-------	-----------	-----------	-------------	-------------	-------------	--------	-------	--------	----------	----------	----

JOHN DEERE

2013 JOHN DEERE RSX850i

317220	839cc	88mm	STD	10.5:1	286	FSR	XC8800	866-2050-15-93C	866-063-MW	Call	Deglaze Only	M
317221	839cc	88mm	STD	11.5:1	298	FSR	XC8800	866-2050-15-93C	866-063-MW	Call	Deglaze Only	M
317222	878cc	90mm	2mm	10.5:1	290	FSR	XC9000	866-2050-15-93C	866-063-MW	Call	Bore & Replate	M
317223	878cc	90mm	2mm	11.5:1	302	FSR	XC9000	866-2050-15-51C	866-063-MW	Call	Bore & Replate	M

KAWASAKI

2003-2006 KFX 400

180297	398cc	90mm	STD	12.0:1	287	Round	XC9000	787-2350-14-93C	787-050-MW	OEM	Deglaze Only	
208659	398cc	90mm	STD	13.5:1	288	Round	XC9000	787-2350-14-93C	787-050-MW	OEM	Deglaze Only	
199657	416cc	92mm	+2mm	12.0:1	279	FSR	XC9200	787-2050-16-93C	787-050-MW	JC7978	Bore & Replate	M
183051	434cc	94mm	+4mm	12.0:1	303	FSR	XC9400	787-2050-16-93C	787-050-MW	JC7979	Bore & Replate	
243651	450cc	95.5mm	+5.5mm	13.0:1	311	FSR	JC2801-3760	787-2050-16-93C	787-050-MW	C7963	Bore & Replate	

2003-2006 KFX 400 - PRO SERIES (2 RING)

261539	450cc	95.5mm	+5.5mm	13.5:1	266	FSR	ZV9550	787-2050-16-93C	787-050-MW	Call	Bore & Replate	
--------	-------	--------	--------	--------	-----	-----	--------	-----------------	------------	------	----------------	--

2008-2014 KFX 450

261971	449cc	96mm	STD	12.8:1	298	FSR	JG5001-3780	827-2050-15-93C	827-050-MW	Call	Deglaze Only	
261972	449cc	96mm	STD	13.5:1	304	FSR	JG5001-3780	827-2050-15-93C	827-050-MW	Call	Deglaze Only	
261973	470cc	98mm	+2mm	12.8:1	309	FSR	XS9800	827-2050-15-93C	827-050-MW	Call	Bore & Replate	
261551	470cc	98mm	+2mm	13.5:1	314	FSR	XS9800	827-2050-15-93C	827-050-MW	Call	Bore & Replate	
261975	480cc	99mm	+3mm	13.0:1	319	FSR	JG5001-3898	827-2050-15-93C	827-050-MW	Call	Call	
261976	488cc	100mm	+4mm	13.0:1	326	FSR	JG3701-3937	827-2050-15-93C	827-050-MW	Call	Call	M

2008-2014 KFX 450 - PRO SERIES (3 RING)

284682	449cc	96mm	STD	12.8:1	284	FSR	JG5001-3780	827-2050-15-93C	827-050-MW	Call	Deglaze Only	
284684	449cc	96mm	STD	13.8:1	290	FSR	JG5001-3780	827-2050-15-93C	827-050-MW	Call	Deglaze Only	

2008-2014 KFX 450 - PRO SERIES (2 RING)

284683	449cc	96mm	STD	12.8:1	269	FSR	ZV9600	827-2050-15-93C	827-050-MW	Call	Deglaze Only	
261970	449cc	96mm	STD	13.8:1	283	FSR	ZV9600	827-2050-15-93C	827-050-MW	Call	Deglaze Only	

2004-2010 KFX 700 / PRAIRIE 700 2004-2006

221786	797cc	87mm	+5mm	11.0:1	265	FSR	XC8700	787-2050-14-93C	787-050-MW	Call	Sleeve	M
--------	-------	------	------	--------	-----	-----	--------	-----------------	------------	------	--------	---

2005-2011 KVF BRUTE FORCE 750 / 2011 KRF TERYX 750

300273	749cc	85mm	STD	9.0:1	251	Round	JG1001-3346	787-2250-14-93C	787-050-MW	Call	Deglaze Only	M
300274	749cc	85mm	STD	10.0:1	255	Round	JG1001-3346	787-2250-14-93C	787-050-MW	Call	Deglaze Only	
274191	749cc	85mm	STD	11.5:1	254	Round	JG1001-3346	787-2250-14-93C	787-050-MW	OEM	Deglaze Only	
274192	840cc	90mm	+5mm	11.5:1	297	Round	JG1001-3543	787-2350-14-93C	787-050-MW	Call	Sleeve	

2012-2015 KVF BRUTE FORCE 750 / 2012-2015 KRF TERYX 750

317180	749cc	85mm	STD	9.0:1	269	Round	JG1001-3346	787-2250-14-93C	787-050-MW	Call	Deglaze Only	M
317181	749cc	85mm	STD	10.0:1	265	Round	JG1001-3346	787-2250-14-93C	787-050-MW	Call	Deglaze Only	M
317182	749cc	85mm	STD	11.5:1	270	Round	JG1001-3346	787-2250-14-93C	787-050-MW	Call	Deglaze Only	M
317183	749cc	85mm	STD	12.0:1	270	Round	JG1001-3346	787-2250-14-93C	787-050-MW	Call	Deglaze Only	M
317184	749cc	85mm	STD	12.5:1	271	Round	JG1001-3346	787-2250-14-93C	78			



POWERSPORTS **ATV / UTV**

PISTON KIT #	DISP.	BORE SIZE	OVER SIZE	COMP. RATIO	GRAM WT (G)	SKIRT STYLE	RING #	PIN #	LOCK #	GASKET #	SLEEVE #	FN
--------------	-------	-----------	-----------	-------------	-------------	-------------	--------	-------	--------	----------	----------	----

KTM

2008-2009 450 XC												
274221	448cc	89mm	STD	12.5:1	261	Round	JG4301-3504	787-2250-14-93C	787-050-MW	Call	Deglaze Only	
274219	448cc	89mm	STD	13.0:1	261	Round	JG4301-3504	787-2250-14-93C	787-050-MW	Call	Deglaze Only	

2009-2011 450 SX - PRO SERIES

260955	449cc	97mm	STD	12.5:1	256	FSR	OEM	748-2050-16-93C	748-050-MW	OEM	Deglaze Only	
260956	449cc	97mm	STD	13.0:1	257	FSR	OEM	748-2050-16-93C	748-050-MW	OEM	Deglaze Only	M
260957	449cc	97mm	STD	13.5:1	261	FSR	OEM	748-2050-16-93C	748-050-MW	OEM	Deglaze Only	

2008-2012 525 XC - PRO SERIES

274173	511cc	95mm	STD	12.5:1	270	FSR	ZS9500	787-2050-16-93C	787-050-MW	Call	Deglaze Only	
274174	511cc	95mm	STD	13.0:1	275	FSR	ZS9500	787-2050-16-93C	787-050-MW	Call	Deglaze Only	
274175	511cc	95mm	STD	13.5:1	279	FSR	ZS9500	787-2050-16-93C	787-050-MW	Call	Deglaze Only	

POLARIS

2003-2007 PREDATOR 500

209286	500cc	99.2mm	STD	11.0:1	363	FSR	J68001-3910-3	905-2050-15-52C	905-073-MW	JC7995	Deglaze Only	
221843	500cc	99.2mm	STD	12.5:1	375	FSR	J68001-3910-3	905-2050-15-51C	905-073-MW	JC7995	Deglaze Only	
222388	560cc	105mm	+5.8mm	12.5:1	399	FSR	J70001-4130-5	905-2250-15-51C	905-073-MW	Call	Call	

2007-2011 OUTLAW 525 - PRO SERIES

274173	511cc	95mm	STD	12.5:1	270	FSR	ZS9500	787-2050-16-93C	787-050-MW	Call	Deglaze Only	
274174	511cc	95mm	STD	13.0:1	275	FSR	ZS9500	787-2050-16-93C	787-050-MW	Call	Deglaze Only	
274175	511cc	95mm	STD	13.5:1	279	FSR	ZS9500	787-2050-16-93C	787-050-MW	Call	Deglaze Only	

2007-2014 RZR 800 / 2005- 2012 SPORTSMAN 800

292801	760cc	80mm	STD	9.0:1	236	Round	XG8000	708-2250-18-PTC	708-050-MW	Call	Deglaze Only	
281815	760cc	80mm	STD	10.75:1	231	Round	XG8000	708-2250-14-93C	708-050-MW	Call	Deglaze Only	
324921	760cc	80mm	STD	11.5:1	236	Round	XG8000	708-2250-14-93C	708-050-MW	Call	Deglaze Only	
281816	760cc	80mm	STD	12.0:1	235	Round	XG8000	708-2250-14-93C	708-050-MW	Call	Deglaze Only	
281814	800cc	82mm	+2mm	10.75:1	243	Round	XG8200	708-2250-14-93C	708-050-MW	Call	Bore & Replate	
324922	800cc	82mm	+2mm	11.5:1	244	Round	XG8200	708-2250-14-93C	708-050-MW	Call	Bore & Replate	
281813	800cc	82mm	+2mm	12.0:1	248	Round	XG8200	708-2250-14-93C	708-050-MW	Call	Bore & Replate	
281818	820cc	83mm	+3mm	10.75:1	247	Round	XG8300	708-2250-14-93C	708-050-MW	Call	Bore & Replate	
324923	820cc	83mm	+3mm	11.5:1	247	Round	XG8300	708-2250-14-93C	708-050-MW	Call	Bore & Replate	
281817	820cc	83mm	+3mm	12.0:1	250	Round	XG8300	708-2250-14-93C	708-050-MW	Call	Bore & Replate	

2009-2017 XP 850 SPORTSMAN

308408	850cc	87mm	STD	11.5:1	269	Round	XC8700	787-2250-18-51C	787-050-MW	Call	Deglaze Only	M
308409	909cc	90mm	+3mm	11.5:1	289	Round	XC9000	787-2350-14-51C	787-050-MW	Call	Bore & Replate	M
308410	971cc	93mm	+6mm	11.5:1	306	Round	XC9300	787-2350-14-51C	787-050-MW	Call	Bore & Replate	M

2011-2014 RZR XP 900

305442	875cc	93mm	STD	8.0:1	278	FSR	JG4001-3661	787-2050-18-PTC	787-050-MW	Call	Deglaze Only	*
305443	875cc	93mm	STD	9.0:1	283	FSR	JG4001-3661	787-2050-18-PTC	787-050-MW	Call	Deglaze Only	*
305444	875cc	93mm	STD	10.5:1	261	FSR	JG4001-3661	787-2050-16-93C	787-050-MW	Call	Deglaze Only	*
305445	875cc	93mm	STD	11.0:1	266	FSR	JG4001-3661	787-2050-16-93C	787-050-MW	Call	Deglaze Only	*
305446	875cc	93mm	STD	11.5:1	272	FSR	JG4001-3661	787-2050-16-93C	787-050-MW	Call	Deglaze Only	*
305447	875cc	93mm	STD	12.0:1	275	FSR	JG4001-3661	787-2050-16-93C	787-050-MW	Call	Deglaze Only	*
306363	912cc	95mm	+2mm	8.0:1	295	FSR	XS9500	787-2050-18-PTC	787-050-MW	Call	Bore & Hone	*, M
306364	912cc	95mm	+2mm	9.0:1	297	FSR	XS9500	787-2050-18-PTC	787-050-MW	Call	Bore & Hone	*, M

Footnotes | Q = Mini Sprint Kit, L = Limited Availability, T = Accepts Turbo and Nitrous, Y = Pro Mod, M = Made to Order, * = Fits 1mm oversize valves
 ** = Fits 2mm oversize valves, 3 = Must Sleeve Bore and Machine Case, 6 = Must run base spacer plate #JC7121, = Pro Series

POWERSPORTS **ATV / UTV**



PISTON KIT #	DISP.	BORE SIZE	OVER SIZE	COMP. RATIO	GRAM WT (G)	SKIRT STYLE	RING #	PIN #	LOCK #	GASKET #	SLEEVE #	FN
--------------	-------	-----------	-----------	-------------	-------------	-------------	--------	-------	--------	----------	----------	----

POLARIS continued

2011-2014 RZR XP 900

306365	912cc	95mm	+2mm	10.5:1	277	FSR	XS9500	787-2050-16-93C	787-050-MW	Call	Bore & Hone	*, M
306366	912cc	95mm	+2mm	11.0:1	282	FSR	XS9500	787-2050-16-93C	787-050-MW	Call	Bore & Hone	*, M
306367	912cc	95mm	+2mm	11.5:1	288	FSR	XS9500	787-2050-16-93C	787-050-MW	Call	Bore & Hone	*, M
306368	912cc	95mm	+2mm	12.0:1	290	FSR	XS9500	787-2050-16-93C	787-050-MW	Call	Bore & Hone	*, M
306369	932cc	96mm	+3mm	8.0:1	299	FSR	JG5001-3780	787-2050-18-PTC	787-050-MW	Call	Bore & Hone	*, M
306370	932cc	96mm	+3mm	9.0:1	303	FSR	JG5001-3780	787-2050-18-PTC	787-050-MW	Call	Bore & Hone	*, M
306371	932cc	96mm	+3mm	10.5:1	284	FSR	JG5001-3780	787-2050-16-93C	787-050-MW	Call	Bore & Hone	*, M
306372	932cc	96mm	+3mm	11.0:1	288	FSR	JG5001-3780	787-2050-16-93C	787-050-MW	Call	Bore & Hone	*
306373	932cc	96mm	+3mm	11.5:1	293	FSR	JG5001-3780	787-2050-16-93C	787-050-MW	Call	Bore & Hone	*
306374	932cc	96mm	+3mm	12.0:1	299	FSR	JG5001-3780	787-2050-16-93C	787-050-MW	Call	Bore & Hone	*, M
306375	971cc	98mm	+5mm	8.0:1	311	FSR	XS9800	787-2050-18-PTC	787-050-MW	Call	Bore & Hone	*, M
306376	971cc	98mm	+5mm	9.0:1	316	FSR	XS9800	787-2050-18-PTC	787-050-MW	Call	Bore & Hone	*
306377	971cc	98mm	+5mm	10.5:1	298	FSR	XS9800	787-2050-16-93C	787-050-MW	Call	Bore & Hone	*, M
306378	971cc	98mm	+5mm	11.0:1	299	FSR	XS9800	787-2050-16-93C	787-050-MW	Call	Bore & Hone	*
306379	971cc	98mm	+5mm	11.5:1	304	FSR	XS9800	787-2050-16-93C	787-050-MW	Call	Bore & Hone	*, M
306380	971cc	98mm	+5mm	12.0:1	310	FSR	XS9800	787-2050-16-93C	787-050-MW	Call	Bore & Hone	*

2014 POLARIS RZR XP 1000

325030	999cc	93mm	STD	8.5:1	290	FSR	JG4001-3661	787-2050-16-93C	787-050-MW	OEM	Deglaze Only	M
325031	999cc	93mm	STD	10.5:1	293	FSR	JG4001-3661	787-2050-16-93C	787-050-MW	OEM	Deglaze Only	
325032	999cc	93mm	STD	11.0:1	299	FSR	JG4001-3661	787-2050-16-93C	787-050-MW	OEM	Deglaze Only	
325033	999cc	93mm	STD	11.5:1	304	FSR	JG4001-3661	787-2050-16-93C	787-050-MW	OEM	Deglaze Only	M
325034	999cc	93mm	STD	12.0:1	312	FSR	JG4001-3661	787-2050-16-93C	787-050-MW	OEM	Deglaze Only	

SUZUKI

2003-2017 LT-Z 400

180297	398cc	90mm	STD	12.0:1	287	Round	XC9000	787-2350-14-93C	787-050-MW	OEM	Deglaze Only	
208659	398cc	90mm	STD	13.5:1	288	Round	XC9000	787-2350-14-93C	787-050-MW	OEM	Deglaze Only	
199657	416cc	92mm	+2mm	12.0:1	279	FSR	XC9200	787-2050-16-93C	787-050-MW	JC7978	Bore & Replate	M
183051	434cc	94mm	+4mm	12.0:1	303	FSR	XC9400	787-2050-16-93C	787-050-MW	JC7979	Bore & Replate	
243651	450cc	95.5mm	+5.5mm	13.0:1	311	FSR	JC2801-3760	787-2050-16-93C	787-050-MW	C7963	Bore & Replate	

2003-2017 LT-Z 400 - PRO SERIES (2 RING)

261539	450cc	95.5mm	+5.5mm	13.5:1	266	FSR	ZV9550	787-2050-16-93C	787-050-MW	Call	Bore & Replate	
--------	-------	--------	--------	--------	-----	-----	--------	-----------------	------------	------	----------------	--

2006-2013 LT-R 450

252742	450cc	95.5mm	STD	13.5:1	299	FSR	JG3701-3760	748-2050-16-93C	748-050-MW	OEM	Deglaze Only	
252743	450cc	95.5mm	STD	12.8:1	297	FSR	JG3701-3760	748-2050-16-93C	748-050-MW	OEM	Deglaze Only	
252744	474cc	98mm	+2.5mm	12.8:1	311	FSR	XS9800	748-2050-16-93C	748-050-MW	Call	Bore & Replate	
252746	474cc	98mm	+2.5mm	13.9:1	317	FSR	XS9800	748-2050-16-93C	748-050-MW	Call	Bore & Replate	
252747	493cc	100mm	+4.5mm	12.8:1	322	FSR	JG3701-3937	748-2050-16-93C	748-050-MW	Call	Sleeve	

2006-2013 LT-R 450 - PRO SERIES (3 RING)

284753	450cc	95.5mm	STD	12.8:1	273	FSR	JG3701-3760	748-2050-16-93C	748-050-MW	OEM	Deglaze Only	
274541	450cc	95.5mm	STD	13.5:1	276	FSR	JG3701-3760	748-2050-16-93C	748-050-MW	OEM	Deglaze Only	

2006-2013 LT-R 450 - PRO SERIES (2 RING)

261967	450cc	95.5mm	STD	13.5:1	271	FSR	ZV9550	748-2050-16-93C	748-050-MW	OEM	Deglaze Only	
300112	493cc	100mm	+4.5mm	13.5:1	297	FSR	ZV1000	748-2050-16-93C	748-050-MW	Call	Sleeve	

Footnotes | Q = Mini Sprint Kit, L = Limited Availability, T = Accepts Turbo and Nitrous, Y = Pro Mod, M = Made to Order, * = Fits 1mm oversize valves
 ** = Fits 2mm oversize valves, 3 = Must Sleeve Bore and Machine Case, 6 = Must run base spacer plate #JC7121, = Pro Series



POWERSPORTS **ATV / UTV**

POWERSPORTS **ATV / UTV**



PISTON KIT #	DISP.	BORE SIZE	OVER SIZE	COMP. RATIO	GRAM WT (G)	SKIRT STYLE	RING #	PIN #	LOCK #	GASKET #	SLEEVE #	FN
--------------	-------	-----------	-----------	-------------	-------------	-------------	--------	-------	--------	----------	----------	----

YAMAHA

2008-2013 YFM250R RAPTOR

274194	249cc	74mm	STD	10.5:1	184	FSR	XA7400	669-1650-14-PTC	669-050-MW	OEM	Deglaze Only	**
274195	249cc	74mm	STD	12.0:1	192	FSR	XA7400	669-1650-14-PTC	669-050-MW	OEM	Deglaze Only	**
274197	263cc	76mm	+2mm	10.5:1	185	FSR	XG7600	669-1650-14-PTC	669-050-MW	Call	Call	**
274198	263cc	76mm	+2mm	12.0:1	198	FSR	XG7600	669-1650-14-PTC	669-050-MW	Call	Call	**

1987-2004 YFM 350 WARRIOR / 2005-2013 RAPTOR 350 / 2007-2014 GRIZZLY 350

209291	348cc	83mm	STD	12.0:1	272	Round	XG8300	748-2250-12-51C	748-050-MW	OEM	Deglaze Only	
209292	366cc	85mm	+2mm	12.0:1	289	Round	XC8500	748-2250-12-51C	748-050-MW	Call	Bore & Hone	
222085	366cc	85mm	+2mm	10.5:1	279	Round	XC8500	748-2250-12-51C	748-050-MW	Call	Bore & Hone	

2006-2009 RHINO 450 / 2007-2012 GRIZZLY 450 / 2003-2006 KODIAK 450 / 2006-2010 WOLVERINE

261962	425cc	85mm	.5mm	10.5:1	262	Round	JG1001-3346	787-2250-12-51C	787-050-MW	Call	Call	
261963	430cc	85.5mm	+1mm	10.5:1	265	Round	JG1001-3366	787-2250-12-51C	787-050-MW	Call	Call	M
261964	440cc	86.5mm	+2mm	10.5:1	273	Round	JG1001-3405	787-2250-12-51C	787-050-MW	Call	Call	

2004-2005 YFZ 450

221796	439cc	95mm	STD	12.5:1	288	FSR	XS9500	787-2050-14-93C	787-050-MW	JC7479	Deglaze Only	
221795	439cc	95mm	STD	13.5:1	282	FSR	XS9500	787-2050-14-93C	787-050-MW	JC7479	Deglaze Only	
221794	450cc	96mm	+1mm	13.0:1	287	FSR	JG5001-3780	787-2050-14-93C	787-050-MW	JC7479	Bore & Replate	
221793	460cc	97mm	+2mm	13.0:1	286	FSR	XS9700	787-2050-14-93C	787-050-MW	JC7502	Bore & Replate	
222086	470cc	98mm	+3mm	13.0:1	310	FSR	XS9800	787-2050-14-93C	787-050-MW	JC7502	Bore & Replate	

2006-2013 YFZ 450 / 2009-2017 YFZ 450R

247957	449cc	95mm	STD	12.5:1	293	FSR	XS9500	787-2050-14-93C	787-050-MW	OEM	Deglaze Only	
247956	449cc	95mm	STD	13.5:1	299	FSR	XS9500	787-2050-14-93C	787-050-MW	OEM	Deglaze Only	
247953	470cc	97mm	+2mm	13.0:1	308	FSR	XS9700	787-2050-14-93C	787-050-MW	Call	Bore & Replate	
247952	480cc	98mm	+3mm	13.0:1	316	FSR	XS9800	787-2050-14-93C	787-050-MW	Call	Bore & Replate	

2006-2013 YFZ 450 / 2009-2017 YFZ 450R - PRO SERIES 2 RING

261555	449cc	95mm	STD	13.5:1	250	FSR	ZS9500	787-2050-16-93C	787-050-MW	OEM	Deglaze Only	
--------	-------	------	-----	--------	-----	-----	--------	-----------------	------------	-----	--------------	--

2006-2013 YFZ 450 / 2009-2017 YFZ 450R - PRO SERIES 3 RING

284685	449cc	95mm	STD	12.5:1	266	FSR	XS9500	787-2050-16-93C	787-050-MW	OEM	Deglaze Only	
274209	449cc	95mm	STD	13.5:1	260	FSR	XS9500	787-2050-16-93C	787-050-MW	OEM	Deglaze Only	
325022	468cc	97mm	+2mm	12.5:1	283	FSR	XS9700	787-2050-16-93C	787-050-MW		Bore & Replate	M
325023	468cc	97mm	+2mm	13.5:1	285	FSR	XS9700	787-2050-16-93C	787-050-MW		Bore & Replate	M
325024	478cc	98mm	+3mm	12.5:1	285	FSR	XS9800	787-2050-16-93C	787-050-MW		Bore & Replate	M
325025	478cc	98mm	+3mm	13.5:1	287	FSR	XS9800	787-2050-16-93C	787-050-MW		Bore & Replate	M

2001-2005 YFM RAPTOR 660, 2002-2007 GRIZZLY, 2006-2008 RHINO

272144	660cc	100mm	STD	10.75:1	400	Round	XH10000	866-2500-15-51C	866-063-MW	OEM	Deglaze Only	
272145	660cc	100mm	STD	12.0:1	419	Round	XH10000	866-2500-15-51C	866-063-MW	OEM	Deglaze Only	
272146	673cc	101mm	+1mm	10.75:1	384	Round	XH10100	866-2500-15-51C	866-063-MW	JC7277	Bore & Hone	
272147	673cc	101mm	+1mm	12.0:1	404	Round	XH10100	866-2500-15-51C	866-063-MW	JC7277	Bore & Hone	
272148	686cc	102mm	+2mm	10.75:1	399	Round	XH10200	866-2500-15-51C	866-063-MW	JC7920	Bore & Hone	
272149	686cc	102mm	+2mm	12.0:1	411	Round	XH10200	866-2500-15-51C	866-063-MW	JC7920	Bore & Hone	
314758	727cc	105mm	+5mm	12.0:1	454	Round	J75001-4130-5	866-2850-15-51C	866-063-MW	JC7909	JE4325B	3, *

PISTON KIT #	DISP.	BORE SIZE	OVER SIZE	COMP. RATIO	GRAM WT (G)	SKIRT STYLE	RING #	PIN #	LOCK #	GASKET #	SLEEVE #	FN
--------------	-------	-----------	-----------	-------------	-------------	-------------	--------	-------	--------	----------	----------	----

YAMAHA continued

2001-2005 YFM RAPTOR 660, 2002-2007 GRIZZLY, 2006-2007 RHINO - PRO SERIES

261524	660cc	100mm	STD	10.0:1	361	FSR	JG3701-3937	866-2050-15-93C	866-063-MW	OEM	Deglaze Only	
261525	660cc	100mm	STD	11.0:1	367	FSR	JG3701-3937	866-2050-15-93C	866-063-MW	OEM	Deglaze Only	
261526	673cc	100mm	STD	12.0:1	380	FSR	JG3701-3937	866-2050-15-93C	866-063-MW	OEM	Bore & Hone	
261527	673cc	102mm	+2mm	10.0:1	380	FSR	XS10200	866-2050-15-93C	866-063-MW	JC7920	Bore & Hone	
261528	686cc	102mm	+2mm	11.0:1	382	FSR	XS10200	866-2050-15-93C	866-063-MW	JC7920	Bore & Hone	
261529	686cc	102mm	+2mm	12.0:1	402	FSR	XS10200	866-2050-15-93C	866-063-MW	JC7920	Bore & Hone	
261530	727cc	105mm	+5mm	10.0:1	417	FSR	J70001-4130-5	866-2250-15-93C	866-063-MW	JC7909	JE4325B	3,**
261531	727cc	105mm	+5mm	11.0:1	412	FSR	J70001-4130-5	866-2250-15-93C	866-063-MW	JC7909	JE4325B	3,**
261532	727cc	105mm	+5mm	12.0:1	417	FSR	J70001-4130-5	866-2250-15-93C	866-063-MW	JC7909	JE4325B	3,**

2001-2005 RAPTOR 660, 2002-2007 GRIZZLY, 2006-2007 RHINO - PRO SERIES (4mm STROKER)

262289	719cc	102mm	+2mm	11.0:1	353	FSR	JC3401-4016	866-2050-15-93C	866-063-MW	Call	Bore & Hone	
300111	762cc	105mm	+5mm	11.0:1	401	FSR	JG4401-4035-2	866-2250-15-93C	866-063-MW	Call	JE4325B	3, *

2006-2014 RAPTOR 700 / 2007-2013 GRIZZLY / 2008-2014 RHINO 700

300175	686cc	102mm	STD	10.0:1	319	FSR	J99001-4010-5	905-2250-15-52C	905-073-MW	OEM	Deglaze Only	
300176	686cc	102mm	STD	11.0:1	336	FSR	J99001-4010-5	905-2250-15-52C	905-073-MW	OEM	Deglaze Only	
300177	686cc	102mm	STD	12.5:1	358	FSR	J99001-4010-5	905-2250-15-52C	905-073-MW	OEM	Deglaze Only	
284761	700cc	103mm	+1mm	12.5:1	368	FSR	J99001-4050-5	905-2250-15-52C	905-073-MW	Call	Bore & Replate	M
300178	714cc	104mm	+2mm	10.0:1	335	FSR	J93301-4100-2	905-2250-15-52C	905-073-MW	Call	Bore & Replate	
247949	714cc	104mm	+2mm	11.4:1	368	FSR	J99001-4090-5	905-2250-15-52C	905-073-MW	Call	Bore & Replate	
284765	735cc	105.5mm	+3.5mm	10.0:1	346	FSR	J790U1-4150-5	905-2250-15-52C	905-073-MW	Call	Bore & Replate	
284766	735cc	105.5mm	+3.5mm	11.0:1	366	FSR	J790U1-4150-5	905-2250-15-52C	905-073-MW	Call	Bore & Replate	
284767	735cc	105.5mm	+3.5mm	12.5:1	385	FSR	J790U1-4150-5	905-2250-15-52C	905-073-MW	Call	Bore & Replate	
300181	741cc	106mm	+4mm	11.0:1	366	FSR	J75001-4170-5	905-2250-15-52C	905-073-MW	Call	Bore & Replate	
300182	741cc	106mm	+4mm	12.5:1	390	FSR	J75001-4170-5	905-2250-15-52C	905-073-MW	Call	Bore & Replate	

2014-2015 YAMAHA GRIZZLY 700 / 2014-2015 YAMAHA VIKING / 2015-2017 YAMAHA YFM700R RAPTOR

324101	686cc	102mm	STD	10.0:1	379	FSR	JG1001-4016	905-2250-15-52C	905-073-MW	OEM	Deglaze	M
324102	686cc	102mm	STD	11.0:1	383	FSR	JG1001-4016	905-2250-15-52C	905-073-MW	OEM	Deglaze	M
324103	686cc	102mm	STD	12.5:1	NEW	FSR	JG1001-4016	905-2250-15-52C	905-073-MW	OEM	Deglaze	M
324104	700cc	103mm	+1mm	10.0:1	382	FSR	J91501-4050-5	905-2250-15-52C	905-073-MW	OEM	Bore & Replate	M
324105	700cc	103mm	+1mm	11.0:1	385	FSR	J91501-4050-5	905-2250-15-52C	905-073-MW	OEM	Bore & Replate	M
324106	700cc	103mm	+1mm	12.5:1	NEW	FSR	J91501-4050-5	905-2250-15-52C	905-073-MW	OEM	Bore & Replate	M

2016-2017 YAMAHA YXZ1000

345192	998cc	80mm	STD	9.5:1	NEW	FSR	XG8000	748-2050-16-93C	748-050-MW	OEM	Deglaze Only	
345193	998cc	80mm	STD	11.5:1	NEW	FSR	XG8000	748-2050-16-93C	748-050-MW	OEM	Deglaze Only	
345194	998cc	80mm	STD	12.5:1	NEW	FSR	XG8000	748-2050-16-93C	748-050-MW	OEM	Deglaze Only	
345195	998cc	80mm	STD	13.0:1	NEW	FSR	XG8000	748-2050-16-93C	748-050-MW	OEM	Deglaze Only	



Footnotes | Q = Mini Sprint Kit, L = Limited Availability, T = Accepts Turbo and Nitrous, Y = Pro Mod, M = Made to Order, * = Fits 1mm oversize valves
 ** = Fits 2mm oversize valves, 3 = Must Sleeve Bore and Machine Case, 6 = Must run base spacer plate #JC7121, = Pro Series

Footnotes | Q = Mini Sprint Kit, L = Limited Availability, T = Accepts Turbo and Nitrous, Y = Pro Mod, M = Made to Order, * = Fits 1mm oversize valves
 ** = Fits 2mm oversize valves, 3 = Must Sleeve Bore and Machine Case, 6 = Must run base spacer plate #JC7121, = Pro Series



WATER & SNOW

Kawasaki | Sea Doo | Ski Doo | Yamaha

POWERSPORTS WATER & SNOW



PISTON KIT #	DISP.	BORE SIZE	OVER SIZE	COMP. RATIO	GRAM WT (G)	SKIRT STYLE	RING #	PIN #	LOCK #	GASKET #	SLEEVE #	FN
--------------	-------	-----------	-----------	-------------	-------------	-------------	--------	-------	--------	----------	----------	----

KAWASAKI - WATER

2007-2008 ULTRA 250X / 2009-2011 ULTRA 260X

274213	1498cc	83mm	STD	9.5:1	279	Round	JG1001-3268	827-2250-15-93C	827-050-MW	OEM	Deglaze Only	T
290051	1498cc	83mm	STD	10.5:1	279	Round	JG1001-3268	827-2250-15-93C	827-050-MW	OEM	Deglaze Only	T

2011-2013 ULTRA 300X

300271	1498cc	83mm	STD	9.5:1	281	Round	JG1001-3268	827-2250-15-93C	827-050-MW	OEM	Deglaze Only	T, M
300272	1498cc	83mm	STD	10.5:1	284	Round	JG1001-3268	827-2250-15-93C	827-050-MW	OEM	Deglaze Only	T, M

SEA DOO - WATER

2004-2014 SEA DOO RXP / RXP-X / RXT / RXT-X

308432	1493cc	100mm	STD	8.4:1	418	FSR	JG3701-3937	905-2250-18-93C	905-073-MW	OEM	Deglaze Only	T
308433	1493cc	100mm	STD	9.5:1	409	FSR	JG3701-3937	905-2250-18-93C	905-073-MW	OEM	Deglaze Only	T
308434	1493cc	100mm	STD	10.0:1	415	FSR	JG3701-3937	905-2250-18-93C	905-073-MW	OEM	Deglaze Only	T
308438	1508cc	100.5mm	+5mm	8.4:1	420	FSR	JG1001-3957	905-2250-18-93C	905-073-MW	Call	Bore & Hone	M, T
308439	1508cc	100.5mm	+5mm	9.5:1	413	FSR	JG1001-3957	905-2250-18-93C	905-073-MW	Call	Bore & Hone	M, T
308440	1508cc	100.5mm	+5mm	10.0:1	421	FSR	JG1001-3957	905-2250-18-93C	905-073-MW	Call	Bore & Hone	M, T

SKI DOO - SNOW

2009-2014 SKI DOO 1200 4-TEC

**Oil squirter must be modified for installation*

292323*	1170cc	91mm	STD	10.0:1	341	Round	JG1001-3583	866-2500-17-93C	866-063-MH	OEM	Call	
---------	--------	------	-----	--------	-----	-------	-------------	-----------------	------------	-----	------	--

YAMAHA - WATER

2009-2013 FX SHO 1800

289959	1812cc	86mm	STD	8.6:1	319	Round	JG1004-3386	866-2250-17-52C	866-063-MW	OEM	Deglaze Only	T
292314	1812cc	86mm	STD	9.5:1	321	Round	JG1004-3386	866-2250-17-52C	866-063-MW	OEM	Deglaze Only	T
308631	1812cc	86mm	STD	10.5:1	330	Round	JG1004-3386	866-2250-17-52C	866-063-MW	OEM	Deglaze Only	M, T
308632	1812cc	86mm	STD	11.0:1	336	Round	JG1004-3386	866-2250-17-52C	866-063-MW	OEM	Deglaze Only	M, T
308633	1832cc	86.5mm	+5mm	8.6:1	323	Round	JG1004-3405	866-2250-17-52C	866-063-MW	Call	Bore & Hone	M, T
308634	1832cc	86.5mm	+5mm	9.5:1	328	Round	JG1004-3405	866-2250-17-52C	866-063-MW	Call	Bore & Hone	M, T
308635	1832cc	86.5mm	+5mm	10.5:1	334	Round	JG1004-3405	866-2250-17-52C	866-063-MW	Call	Bore & Hone	M, T
308636	1832cc	86.5mm	+5mm	11.0:1	342	Round	JG1004-3405	866-2250-17-52C	866-063-MW	Call	Bore & Hone	M, T

YAMAHA - SNOW

2008-2015 FX / RTX NYTRO

274211	1049cc	82mm	STD	9.5:1	218	FSR	XG8200	748-1750-16-93C	748-050-MW	OEM	Deglaze Only	T
317206	1049cc	82mm	STD	12.0:1	230	Round	XG8200	748-1750-16-93C	748-050-MW	OEM	Deglaze Only	M

2005-2008 RS VECTOR / RAGE 2006-2007 NYTRO / 2005-2009 RS VENTURE

247936	973cc	79mm	STD	13.0:1	196	FSR	XG7900	748-1650-14-93C	748-050-MW	OEM	Deglaze Only	
--------	-------	------	-----	--------	-----	-----	--------	-----------------	------------	-----	--------------	--

2003-2007 RX1-WARRIOR / 06-10 APEX / 2006-2007 ATTACK

262326	998cc	74mm	STD	9.0:1	191	Round	XA7400	669-2050-14-52C	669-050-MW	OEM	Deglaze Only	T
247958	998cc	74mm	STD	10.0:1	182	Round	XA7400	669-2050-14-52C	669-050-MW	OEM	Deglaze Only	T
174998*	998cc	74mm	STD	13.0:1	177	Round	OEM	669-2050-11-52C	669-050-MW	OEM	Deglaze Only	M
222096	998cc	74mm	STD	13.0:1	163	FSR	XA7400	669-1650-14-PTC	669-050-MW	Call	Deglaze Only	M
221392	1029cc	75mm	+1mm	13.0:1	156	FSR	XG7500	669-1650-14-PTC	669-050-MW	Call	Bore & Replate	M
222095	1052cc	76mm	+2mm	13.0:1	171	FSR	XG7600	669-1650-14-PTC	669-050-MW	Call	Resleeve	



V-TWIN

JE Pistons offers a complete line of forged V-Twin pistons. Every piston is designed to withstand the demands of today's high horsepower engines. No matter if you're building a 1200cc, 883-1200cc conversion or a 113 cubic inch monster, JE has the right pistons for you.

PISTON KIT #	DISP.	BORE SIZE	OVER SIZE	COMP. RATIO	GRAM WT (G)	SKIRT STYLE	RING #	PIN #	LOCK #	GASKET #	SLEEVE #	FN
--------------	-------	-----------	-----------	-------------	-------------	-------------	--------	-------	--------	----------	----------	----

HARLEY-DAVIDSON

1978-1984 SHOVELHEAD 80"

135846	1342cc	3.503"	+ .005"	9.5:1	424	Round	J140F1-3503	791-2500-14-51C	787-050-MW	JC9799	Bore & Hone	M
135848	1353cc	3.518"	+ .020"	9.5:1	432	Round	J140F1-3518	791-2500-14-51C	787-050-MW	JC9799	Bore & Hone	M
135849	1361cc	3.528"	+ .030"	9.5:1	434	Round	J140F1-3528	791-2500-14-51C	787-050-MW	JC9799	Bore & Hone	M
133443	1342cc	3.503"	+ .005"	10.5:1	448	Round	J140F1-3503	791-2500-14-51C	787-050-MW	JC9799	Bore & Hone	M
133446	1361cc	3.528"	+ .030"	10.5:1	461	Round	J140F1-3528	791-2500-14-51C	787-050-MW	JC9799	Bore & Hone	M

1978-1984 SHOVELHEAD 89"

138673	1438cc	3.625"	STD	10.5:1	456	Round	J150F1-3625	791-2500-14-51C	787-050-MW	JC9713	Deglaze Only	
138675	1453cc	3.635"	+ .010"	10.5:1	454	Round	J160F1-3635	791-2500-14-51C	787-050-MW	JC9713	Bore & Hone	M

1986-2004 883 SPORTSTER® FLAT TRACK

151606	889cc	3.010"	+ .010"	Flat Top	235	Round	XC7650	791-2250-11-52C	787-050-MW	OEM	Bore & Hone	L
--------	-------	--------	---------	----------	-----	-------	--------	-----------------	------------	-----	-------------	---

1984-2001 1200 SPORTSTER®

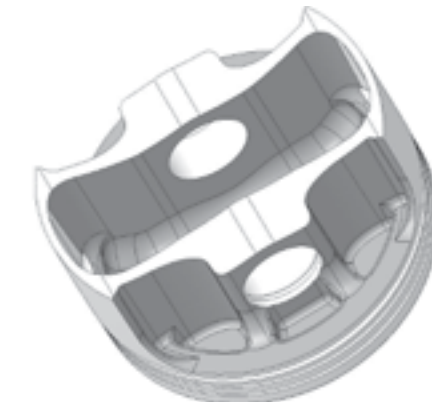
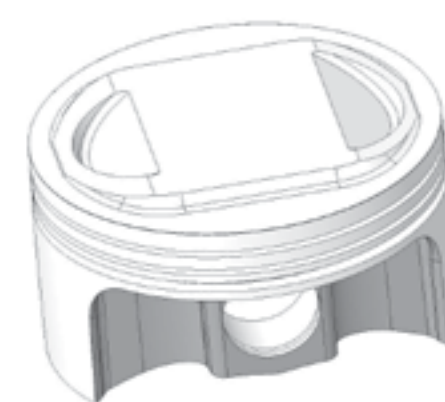
133736	1200cc	3.498"	STD	9.0:1	343	Round	J140F1-3498	791-2500-14-51C	787-050-MW	JC9689	Deglaze Only	M
133738	1208cc	3.508"	+ .010"	9.0:1	352	Round	J140F1-3508	791-2500-14-51C	787-050-MW	JC9689	Bore & Hone	M
133739	1214cc	3.518"	+ .020"	9.0:1	350	Round	J140F1-3518	791-2500-14-51C	787-050-MW	JC9689	Bore & Hone	M
133740	1222cc	3.528"	+ .030"	9.0:1	358	Round	J140F1-3528	791-2500-14-51C	787-050-MW	JC9689	Bore & Hone	M
132985	1200cc	3.498"	STD	10.5:1	355	Round	J140F1-3498	791-2500-14-51C	787-050-MW	JC9689	Deglaze Only	M
132986	1205cc	3.503"	+ .005"	10.5:1	359	Round	J140F1-3503	791-2500-14-51C	787-050-MW	JC9689	Bore & Hone	M
132987	1208cc	3.508"	+ .010"	10.5:1	358	Round	J140F1-3508	791-2500-14-51C	787-050-MW	JC9689	Bore & Hone	M
132989	1222cc	3.528"	+ .030"	10.5:1	367	Round	J140F1-3528	791-2500-14-51C	787-050-MW	JC9689	Bore & Hone	M

1985-2004 883 / 1200 SPORTSTER® CONVERSION KIT

129856*	1200cc	3.498"	STD	9.5:1	332	Round	J140F1-3498	791-2500-14-51C	787-050-MW	JC9689	Bore & Hone	
129857*	1205cc	3.503"	+ .005"	9.5:1	333	Round	J140F1-3503	791-2500-14-51C	787-050-MW	JC9689	Bore & Hone	M
136335*	1214cc	3.518"	+ .020"	9.5:1	342	Round	J140F1-3518	791-2500-14-51C	787-050-MW	JC9689	Bore & Hone	M

BUELL S1, WHITE LIGHTNING-S3/S3T, THUNDERBOLT - 101hp w/ THUNDERSTORM HEADS

161949	1200cc	3.498"	STD	10.0:1	334	Round	J140F1-3498	792-2500-14-51C	787-050-MW	JC9689	Deglaze Only	M
161950	1207cc	3.508"	+ .010"	10.0:1	337	Round	J140F1-3508	792-2500-14-51C	787-050-MW	JC9689	Bore & Hone	M
161951	1214cc	3.518"	+ .020"	10.0:1	340	Round	J140F1-3518	792-2500-14-51C	787-050-MW	JC9689	Bore & Hone	M
161952	1221cc	3.528"	+ .030"	10.0:1	341	Round	J140F1-3528	792-2500-14-51C	787-050-MW	JC9689	Bore & Hone	M



Improved Twin Cam FSR pistons provide less weight, low friction skirt design and a larger selection!

Footnotes | Q = Mini Sprint Kit, L = Limited Availability, T = Accepts Turbo and Nitrous, Y = Pro Mod, M = Made to Order, * = Fits 1mm oversize valves
 ** = Fits 2mm oversize valves, 3 = Must Sleeve Bore and Machine Case, 6 = Must run base spacer plate #JC7121, ■ = Pro Series



PISTON KIT #	DISP.	BORE SIZE	OVER SIZE	COMP. RATIO	GRAM WT (G)	SKIRT STYLE	RING #	PIN #	LOCK #	GASKET #	SLEEVE #	FN
--------------	-------	-----------	-----------	-------------	-------------	-------------	--------	-------	--------	----------	----------	----

HARLEY-DAVIDSON continued

1985-1999 EVO 80"												
125329	1340cc	3.498"	STD	8.5:1	358	Round	J140F1-3498	792-2500-14-51C	787-050-MW	JC9689	Deglaze Only	M
124962	1342cc	3.503"	+0.005"	8.5:1	361	Round	J140F1-3503	792-2500-14-51C	787-050-MW	JC9689	Bore & Hone	M
126943	1345cc	3.508"	+0.010"	8.5:1	364	Round	J140F1-3508	792-2500-14-51C	787-050-MW	JC9689	Bore & Hone	M
125330	1340cc	3.498"	STD	9.5:1	378	Round	J140F1-3498	792-2500-14-51C	787-050-MW	JC9689	Deglaze Only	M
124846	1342cc	3.503"	+0.005"	9.5:1	379	Round	J140F1-3503	792-2500-14-51C	787-050-MW	JC9689	Bore & Hone	M
124847	1345cc	3.508"	+0.010"	9.5:1	379	Round	J140F1-3508	792-2500-14-51C	787-050-MW	JC9689	Bore & Hone	M
124848	1353cc	3.518"	+0.020"	9.5:1	381	Round	J140F1-3518	792-2500-14-51C	787-050-MW	JC9689	Bore & Hone	M
124849	1361cc	3.528"	+0.030"	9.5:1	383	Round	J140F1-3528	792-2500-14-51C	787-050-MW	JC9689	Bore & Hone	M
133731	1340cc	3.498"	STD	10.0:1	393	Round	J140F1-3498	792-2500-14-51C	787-050-MW	JC9689	Deglaze Only	M
133732	1342cc	3.503"	+0.005"	10.0:1	392	Round	J140F1-3503	792-2500-14-51C	787-050-MW	JC9689	Bore & Hone	M
133733	1345cc	3.508"	+0.010"	10.0:1	396	Round	J140F1-3508	792-2500-14-51C	787-050-MW	JC9689	Bore & Hone	M
133734	1353cc	3.518"	+0.020"	10.0:1	391	Round	J140F1-3518	792-2500-14-51C	787-050-MW	JC9689	Bore & Hone	M
133735	1361cc	3.528"	+0.030"	10.0:1	404	Round	J140F1-3528	792-2500-14-51C	787-050-MW	JC9689	Bore & Hone	M
134092	1340cc	3.498"	STD	10.5:1	399	Round	J140F1-3498	792-2500-14-51C	787-050-MW	JC9689	Deglaze Only	M
134093	1342cc	3.503"	+0.005"	10.5:1	404	Round	J140F1-3503	792-2500-14-51C	787-050-MW	JC9689	Bore & Hone	M
134094	1345cc	3.508"	+0.010"	10.5:1	403	Round	J140F1-3508	792-2500-14-51C	787-050-MW	JC9689	Bore & Hone	M
134095	1353cc	3.518"	+0.020"	10.5:1	408	Round	J140F1-3518	792-2500-14-51C	787-050-MW	JC9689	Bore & Hone	M

1985-1999 EVO BIG BORE 87"												
161939	1437cc	3.625"	STD	9.25:1	367	Round	J150F1-3625	792-2500-14-51C	787-050-MW	JC9691	Deglaze Only	M
161941	1446cc	3.635"	+0.010"	9.25:1	368	Round	J160F1-3635	792-2500-14-51C	787-050-MW	JC9691	Bore & Hone	M
161946	1453cc	3.645"	+0.020"	10.25:1	404	Round	J120F1-3645	792-2500-14-51C	787-050-MW	JC9691	Bore & Hone	L

1985-1999 EVO BIG BORE 96" (4 5/8 Stroker)												
161947	1564cc	3.625"	STD	9.5:1	345	Round	J150F1-3625	792-2500-14-51C	787-050-MW	JC9691	Deglaze Only	M
161948	1572cc	3.635"	+0.010"	9.5:1	348	Round	J160F1-3635	792-2500-14-51C	787-050-MW	JC9691	Bore & Hone	M

1340 EVO EDELBROCK												
309878	1340cc	3.498"	STD	9.0:1	345	Round	J140F1-3498	792-2500-14-51C	787-050-MW	JC9689	Deglaze Only	M
309879	1342cc	3.503"	+0.005"	9.0:1	346	Round	J140F1-3503	792-2500-14-51C	787-050-MW	JC9689	Bore & Hone	M
309880	1345cc	3.508"	+0.010"	9.0:1	347	Round	J140F1-3508	792-2500-14-51C	787-050-MW	JC9689	Bore & Hone	M
309881	1353cc	3.518"	+0.020"	9.0:1	350	Round	J140F1-3518	792-2500-14-51C	787-050-MW	JC9689	Bore & Hone	M

1999-2006 TWIN CAM 88® (4.000" Stroke)												
161933	1455cc	3.760"	+0.010"	10.25:1	390	Round	JG100F1-3756-5	927-2500-15-51C	927-073-MW	JC9745	Bore & Hone	M
161934	1463cc	3.770"	+0.020"	10.25:1	390	Round	J100F1-3766-5	927-2500-15-51C	927-073-MW	JC9745	Bore & Hone	M

1996-2015 TWIN CAM 95" (4.000" Stroke)												
324712	1545cc	3.875"	STD	9.25:1	369	FSR	VM3875	927-2250-15-51C	927-073-MW		Deglaze	
324713	1549cc	3.880"	0.005	9.25:1	369	FSR	VM3880	927-2250-15-51C	927-073-MW		Bore & Hone	
324714	1553cc	3.885"	0.010	9.25:1	370	FSR	VM3885	927-2250-15-51C	927-073-MW		Bore & Hone	M
324715	1561cc	3.895"	0.020	9.25:1	373	FSR	VM3895	927-2250-15-51C	927-073-MW		Bore & Hone	M
324716	1545cc	3.875"	STD	10.5:1	401	FSR	VM3875	927-2250-15-51C	927-073-MW		Deglaze	
324717	1549cc	3.880"	0.005	10.5:1	397	FSR	VM3880	927-2250-15-51C	927-073-MW		Bore & Hone	
324718	1553cc	3.885"	0.010	10.5:1	395	FSR	VM3885	927-2250-15-51C	927-073-MW		Bore & Hone	M
324719	1561cc	3.895"	0.020	10.5:1	397	FSR	VM3895	927-2250-15-51C	927-073-MW		Bore & Hone	M

2007-2015 TWIN CAM FLAT TOP 96" (4.375" Stroke)												
262381	1584cc	3.750"	STD	9.3:1	332	Round	XK3750	927-2500-15-51C	927-073-MW		Deglaze Only	
262383	1589cc	3.755"	+0.005"	9.3:1	336	Round	XK3755	927-2500-15-51C	927-073-MW		Bore & Hone	
262385	1594cc	3.760"	+0.010"	9.3:1	337	Round	XK3760	927-2500-15-51C	927-073-MW		Bore & Hone	

Footnotes Q = Mini Sprint Kit, L = Limited Availability, T = Accepts Turbo and Nitrous, Y = Pro Mod, M = Made to Order, * = Fits 1mm oversize valves ** = Fits 2mm oversize valves, 3 = Must Sleeve Bore and Machine Case, 6 = Must run base spacer plate #JC7121, ■ = Pro Series

PISTON KIT #	DISP.	BORE SIZE	OVER SIZE	COMP. RATIO	GRAM WT (G)	SKIRT STYLE	RING #	PIN #	LOCK #	GASKET #	SLEEVE #	FN
--------------	-------	-----------	-----------	-------------	-------------	-------------	--------	-------	--------	----------	----------	----

HARLEY-DAVIDSON continued

2007-2015 TWIN CAM DOME 96" (4.375" Stroke)												
262382	1584cc	3.750"	STD	10.25:1	337	Round	XK3750	927-2500-15-51C	927-073-MW		Deglaze Only	
262384	1589cc	3.755"	+0.005"	10.25:1	339	Round	XK3755	927-2500-15-51C	927-073-MW		Bore & Hone	
262386	1594cc	3.760"	+0.010"	10.25:1	338	Round	XK3760	927-2500-15-51C	927-073-MW		Bore & Hone	

1996-2014 TWIN CAM 98" (4.000" Stroke)												
324720	1595cc	3.937"	STD	9.5:1	385	FSR	JG1001-3937	927-2250-15-51C	927-073-MW		Deglaze	M
324721	1595cc	3.937"	STD	10.0:1	395	FSR	JG1001-3937	927-2250-15-51C	927-073-MW		Deglaze	M
324722	1595cc	3.937"	STD	10.5:1	403	FSR	JG1001-3937	927-2250-15-51C	927-073-MW		Deglaze	M

1996-2015 TWIN CAM 103" - (Does not fit Rushmore Liquid Cooled Heads)												
324723	1691cc	3.875"	STD	9.0:1	345	FSR	VM3875	927-2250-15-51C	927-073-MW		Deglaze	
324724	1695cc	3.880"	0.005	9.0:1	347	FSR	VM3880	927-2250-15-51C	927-073-MW		Bore & Hone	
324725	1700cc	3.885"	0.010	9.0:1	349	FSR	VM3885	927-2250-15-51C	927-073-MW		Bore & Hone	M
324726	1691cc	3.875"	STD	10.0:1/FT	349	FSR	VM3875	927-2250-15-51C	927-073-MW		Deglaze	
324727	1695cc	3.880"	0.005	10.0:1/FT	351	FSR	VM3880	927-2250-15-51C	927-073-MW		Bore & Hone	
324728	1700cc	3.885"	0.010	10.0:1/FT	353	FSR	VM3885	927-2250-15-51C	927-073-MW		Bore & Hone	M
324729	1691cc	3.875"	STD	10.5:1	359	FSR	VM3875	927-2250-15-51C	927-073-MW		Deglaze	
324730	1695cc	3.880"	0.005	10.5:1	361	FSR	VM3880	927-2250-15-51C	927-073-MW		Bore & Hone	
324731	1700cc	3.885"	0.010	10.5:1	363	FSR	VM3885	927-2250-15-51C	927-073-MW		Bore & Hone	M

2007-2015 TWIN CAM 107" - (Does not fit Rushmore Liquid Cooled Heads)												
317211	1745cc	3.937"	STD	10.25:1	350	Round	JG1001-3937	927-2500-15-51C	927-073-MW	Call	Deglaze Only	M
317212	1745cc	3.937"	STD	10.75:1	355	Round	JG1001-3937	927-2500-15-51C	927-073-MW	Call	Deglaze Only	M

1996-2015 TWIN CAM 110" - (Does not fit Rushmore Liquid Cooled Heads)												
324732	1802cc	4.000"	STD	10.5:1	370	FSR	JG3101-4000-7	927-2250-15-51C	927-073-MW		Deglaze	M
324733	1807cc	4.005"	0.005	10.5:1	371	FSR	JG3101-4000-7	927-2250-15-51C	927-073-MW		Bore & Hone	M

V-ROD												
317227	1178cc	3.937"	STD	8.5:1	376	FSR	JG1001-3937	866-2250-15-51C	866-063-MW	Call	Deglaze Only	M
317228	1178cc	3.937"	STD	9.5:1	381	FSR	JG1001-3937	866-2250-15-51C	866-063-MW	Call	Deglaze Only	M
317229	1178cc	3.937"	STD	12.0:1	383	FSR	JG1001-3937	866-2250-15-51C	866-063-MW	Call	Deglaze Only	M

Footnotes Q = Mini Sprint Kit, L = Limited Availability, T = Accepts Turbo and Nitrous, Y = Pro Mod, M = Made to Order, * = Fits 1mm oversize valves ** = Fits 2mm oversize valves, 3 = Must Sleeve Bore and Machine Case, 6 = Must run base spacer plate #JC7121, ■ = Pro Series



PISTON KIT #	DISP.	BORE SIZE	OVER SIZE	COMP. RATIO	GRAM WT (G)	SKIRT STYLE	RING #	PIN #	LOCK #	GASKET #	SLEEVE #	FN
--------------	-------	-----------	-----------	-------------	-------------	-------------	--------	-------	--------	----------	----------	----

HONDA

2003-2013 HONDA VTX 1300

321502	1312cc	89.5mm	STD	10.0:1	303	Round	XC8950	787-2250-12-51C	787-050-MW	Call	Deglaze Only	M
321503	1312cc	89.5mm	STD	11.0:1	307	Round	XC8950	787-2250-12-51C	787-050-MW	Call	Deglaze Only	M
321504	1327cc	90mm	+ .5mm	10.0:1	305	Round	XC9000	787-2250-12-51C	787-050-MW	Call	Bore & Replate	M
321505	1327cc	90mm	+ .5mm	11.0:1	309	Round	XC9000	787-2250-12-51C	787-050-MW	Call	Bore & Replate	M

2002-2008 HONDA VTX 1800

317225	1795cc	101mm	STD	8.0:1	353	Round	XS10100	945-2500-14-52C	945-073-MW	Call	Deglaze Only	M
317226	1795cc	101mm	STD	11.0:1	392	Round	XS10100	945-2500-14-52C	945-073-MW	Call	Deglaze Only	M

REV TECH

REV TECH INVERTED DOME 100"

**Verify Std Bore due to cylinder variation*

308419*	1637cc	3.8126"	STD-R	9.5:1	417	Round	J190F1-3818	792-2500-14-51C	787-050-MW		Deglaze Only	M
308420*	1637cc	3.8130"	STD-B	9.5:1	417	Round	J190F1-3818	792-2500-14-51C	787-050-MW		Deglaze Only	M
308421*	1637cc	3.8134"	STD-Y	9.5:1	417	Round	J190F1-3818	792-2500-14-51C	787-050-MW		Deglaze Only	M
308422	1646cc	3.8225"	+ .010"	9.5:1	405	Round	J190F1-3823	792-2500-14-51C	787-050-MW		Bore & Hone	M
308423	1655cc	3.8326"	+ .020"	9.5:1	407	Round	J190F1-3833	792-2500-14-51C	787-050-MW		Bore & Hone	M
308424	1663cc	3.8427"	+ .030"	9.5:1	409	Round	J190F1-3843	792-2500-14-51C	787-050-MW		Bore & Hone	M

REV TECH FLAT TOP 100"

**Verify Std Bore due to cylinder variation*

308425*	1637cc	3.8126"	STD-R	10.0:1	394	Round	J190F1-3818	792-2500-14-51C	787-050-MW		Deglaze Only	M
308426*	1637cc	3.8130"	STD-B	10.0:1	394	Round	J190F1-3818	792-2500-14-51C	787-050-MW		Deglaze Only	M
308427*	1637cc	3.8134"	STD-Y	10.0:1	394	Round	J190F1-3818	792-2500-14-51C	787-050-MW		Deglaze Only	M
308428	1646cc	3.8225"	+ .010"	10.0:1	405	Round	J190F1-3823	792-2500-14-51C	787-050-MW		Bore & Hone	M
308429	1655cc	3.8326"	+ .020"	10.0:1	407	Round	J190F1-3833	792-2500-14-51C	787-050-MW		Bore & Hone	M
308430	1663cc	3.8427"	+ .030"	10.0:1	408	Round	J190F1-3843	792-2500-14-51C	787-050-MW		Bore & Hone	M

TRIUMPH

2004-2013 ROCKET 3

317209	2249cc	101.6mm	STD	10.5:1	361	FSR	JG3101-4000-7	866-2250-15-51C	866-063-MW	Call	Deglaze Only	M
317210	2249cc	101.6mm	STD	11.7:1	385	FSR	JG3101-4000-7	866-2250-15-51C	866-063-MW	Call	Deglaze Only	M

VICTORY

VICTORY V92

317189	1510cc	3.8188"	STD	10.5:1	353	FSR	XS9700	866-2050-18-51C	866-063-MW	Call	Deglaze Only	M
--------	--------	---------	-----	--------	-----	-----	--------	-----------------	------------	------	--------------	---



COMPONENTS

RINGS | WRIST PINS | CLIPS

JE Piston's warehouse holds the largest stocking inventory of piston accessories in the industry. As a result JE has exceptional fill rates (98%) and rapid delivery times. If you need piston rings, wrist pins or clips, JE can take care of you.



POWERSPORTS COMPONENTS

RINGS



All JE rings listed can be used in cast iron, nickel ceramic platings (Nikasil), boron composite, and Electrofusion bores. **CAUTION:** With the exception of the XJ rings, JE's 4-stroke Chrome rings should NOT be used in chrome plated bores. Engine damage may occur. *XJ rings are designed to be used in chrome bores.

RING TYPE	BORE RANGE	TOP RING	SECOND RING	OIL RING
XA	59mm-74.5mm (2.323"-2.933")	0.8mm (.031") Alloy steel, ferrox coated, chrome faced	0.8mm (.031") Cast iron, phosphate coated, taper faced	1.5mm (.059") 3 piece oil assembly: Stainless steel flex-vent spacer, chrome faced rails
XC	64mm-94mm (2.520"-3.701")	1mm (.039") Alloy steel, ferrox coated, chrome faced	1.2mm (.047") Cast iron, phosphate coated, taper faced	2.8mm (.110") 3 piece oil assembly: Stainless steel spacer, chrome faced rails
XG	75mm-83mm (2.953"-3.268")	1mm (.039") Alloy steel, ferrox coated, chrome faced	1mm (.039") Cast iron, phosphate coated, taper faced	2mm (.079") 3 piece oil assembly: Stainless steel spacer, chrome faced rails
XH	95mm-102mm (3.740"-4.016")	1.2mm (.047") Alloy steel, ferrox coated, chrome faced	1.5mm (.057") Cast iron, phosphate coated, taper faced	4mm (.158") 3 piece oil assembly: Stainless steel spacer, chrome faced rails
XJ*	95mm (3.740")	1.2mm (.047") Soft nitrided, nodular cast iron	1.5mm (.057") Cast iron, phosphate coated, taper faced	4mm (.158") 3 piece oil assembly: Stainless steel spacer, soft nitrided rails
XS ZS same except no second ring	95mm-102mm (3.740"-4.016")	1.2mm (.047") Alloy steel, ferrox coated, chrome faced	1.5mm (.057") Cast iron, phosphate coated, taper faced	2mm (.079") 3 piece oil assembly: Stainless steel flex-vent spacer, chrome faced rails
XU	77mm (3.031")	0.9mm (.035") Alloy steel, ferrox coated, chrome faced	0.8mm (.031") Alloy steel, ferrox coated, taper faced	1.5mm (.059") 3 piece oil assembly: Stainless steel flex-vent spacer, chrome faced rails
ZV	95.5mm-100mm (3.760"-3.937")	0.95mm (.037") Alloy steel, gas nitrided flat faced	No Second Ring	2mm (.079") 3 piece oil assembly: Stainless steel flex-vent spacer, chrome faced rails
J100F	4.000"-4.625"	1/16" Plasma Moly Barrel Faced Torsional	1/16" Phosphate Coated Taper Faced Reverse Torsional	3/16" Standard Tension 3 piece oil assembly: Stainless steel spacer
J10001	4.000"-4.625"	1/16" Plasma Moly Barrel Faced Torsional	1/16" Phosphate Coated Taper Faced Reverse Torsional	3/16" Low Tension 3 piece oil assembly: Stainless steel spacer
JG1001	65mm-94mm (2.559"-3.701")	1.0mm (.039") Steel Gas Nitrided Barrel Faced	1.2mm (.047") Premium Iron Napier	2.8mm (.110") 3 piece oil assembly: flex-vent spacer chrome faced rails
JG1101	94mm (3.701")	1.0mm (.039") Steel Gas Nitrided Barrel Faced	1.2mm (.047") Premium Iron Napier	2.0mm (.079") 3 piece oil assembly: flex-vent spacer chrome faced rails
J140F1	3.188" - 3.655"	1/16" Ductile Iron, Barrel Faced	1/16" Cast iron, Taper Faced Reverse Torsional	5/32" 3 piece oil assembly: Stainless steel flex-vent spacer, chrome faced rails
JC2801 JC3201 same except no second ring	95.5mm (3.760")	1.2mm (.047") Alloy Steel Ferrox Coated Chrome Faced	1.2mm (.047") Cast Iron Phosphate Coated Taper Face	2.5mm (.098") 3 piece oil assembly: Stainless steel spacer
JC3301	77mm (3.031")	0.9mm (.035") Alloy Steel ferrox coated Chrome Faced	No Second Ring	1.5mm (.059") 3 piece oil assembly: flex-vent spacer chrome faced rails
JG3401	76mm-80mm (2.992" -3.150")	1.0mm (.039") Alloy Steel ferrox coated Chrome Faced	No Second Ring	2.0mm (.079") 3 piece oil assembly: flex-vent spacer chrome faced rails
JC3501	77mm (3.031")	0.8mm (.031") Alloy Steel Phosphate coated Gas Nitrided Torsional	No Second Ring	1.5mm (.059") 3 piece oil assembly: flex-vent spacer Chrome faced rails
JC3601	58mm-59mm (2.283"-2.323")	1.0mm (.039") Alloy Steel Ferrox Coated Chrome Faced	1.2mm (.047") Cast Iron Phosphate Coated Taper Faced	2.5mm (.098") 3 piece oil assembly: flex-vent spacer chrome faced rails
JG7001	78mm-80mm (3.071"-3.150")	0.9mm (.035") Steel Gas Nitrided Barrel Faced	No Second Ring	1.5mm (.059") 3 piece oil assembly: flex-vent spacer nitrided rails



Most JE shelf pistons include double spiro locks as standard equipment. These locks are installed by spreading the lock between 1/8" and 1/4" and rotating the lock into the groove in the piston pin boss. Wire locks are installed in much the same manner but require chamfered wrist pins. Wire locks tend to spread side loads over more of the piston pin boss area and are considered to be a stronger method of holding the pin in place. Hook wire locks have a built in hook at the end gap. The purpose for this style of wire lock is to prevent rotation within the lock groove itself. Tru arc locks fall between these two and can be used with the stock sharp edge wrist pins. The advantage of tru-arc locks is ease of installation and they can be re-used unlike spiro locks, however they are not recommended for medium to high horsepower applications.

Hook Locks • Spiro Locks • Spiro Locks • Tru Arc Locks • Wire Locks



Chrome Silicon



Carbon Steel



Alloy Steel



Carbon Steel



Chrome Silicon

LOCK LETTER CODES

CS = Carbon Steel, Spiro Lock
AS = Alloy Steel, Spiro Lock

CT = Carbon Steel, Tru Arc Lock
MW = Chrome Silicon Wire Lock

SS = Stainless Steel, Spiro Lock
MH = Chrome Silicon Hook Wire Lock

HOOKE WIRE LOCK

PART #	DIAMETER	THICKNESS	MATERIAL
748-063-MH	.748"	.063"	CHROME SILICON
866-063-MH	.866"	.063"	CHROME SILICON
927-073-MH	.927"	.073"	CHROME SILICON

SPIRO LOCK

PART #	DIAMETER	THICKNESS	MATERIAL
490-035-CS	.490"	.035"	CARBON STEEL
728-035-CS	.748"	.035"	CARBON STEEL
748-042-CS	.748"	.042"	CARBON STEEL
812-042-CS	.812"	.042"	CARBON STEEL
866-042-CS	.866"	.042"	CARBON STEEL
866-073-SS	.866"	.073"	STAINLESS STEEL
927-042-AS	.927"	.042"	ALLOY
927-042-CS	.927"	.042"	CARBON STEEL
927-073-AS	.927"	.073"	ALLOY
927-042-SS	.927"	.042"	STAINLESS STEEL

TRU ARC LOCK

PART #	DIAMETER	THICKNESS	MATERIAL
490-035-CT	.490"	.035"	CARBON STEEL
748-035-CT	.748"	.035"	CARBON STEEL
812-042-CT	.812"	.042"	CARBON STEEL
866-042-CT	.866"	.042"	CARBON STEEL
905-042-CT	.905"	.042"	CARBON STEEL
927-042-CT	.927"	.042"	CARBON STEEL



WIRE LOCK

PART #	DIAMETER	THICKNESS	MATERIAL
512-040-AW	.512"	.040"	ALLOY
551-040-MW	.551"	.040"	CHROME SILICON
591-040-MW	.591"	.040"	CHROME SILICON
630-050-MW	.630"	.050"	CHROME SILICON
669-050-MW	.669"	.050"	CHROME SILICON
708-050-MW	.708"	.050"	CHROME SILICON
708-063-MW	.708"	.063"	CHROME SILICON
728-050-MW	.728"	.050"	CHROME SILICON
748-050-MW	.748"	.050"	CHROME SILICON
748-063-MW	.748"	.063"	CHROME SILICON
767-050-MW	.767"	.050"	CHROME SILICON
787-050-MW	.787"	.050"	CHROME SILICON
787-063-MW	.787"	.063"	CHROME SILICON
827-050-MW	.827"	.050"	CHROME SILICON
827-063-MW	.827"	.063"	CHROME SILICON
866-063-MW	.866"	.063"	CHROME SILICON
866-073-MW	.866"	.073"	CHROME SILICON
905-073-MW	.905"	.073"	CHROME SILICON
927-073-MW	.927"	.073"	CHROME SILICON
945-073-MW	.945"	.073"	CHROME SILICON

WIRE LOCK - CRITICAL TOLERANCE

PART #	DIAMETER	THICKNESS	MATERIAL
728-050-UW	.728"	.050"	CHROME SILICON
748-063-UW	.748"	.063"	CHROME SILICON
787-050-UW	.787"	.050"	CHROME SILICON
787-063-UW	.787"	.063"	CHROME SILICON
827-063-UW	.827"	.063"	CHROME SILICON
866-063-UW	.866"	.063"	CHROME SILICON
866-073-UW	.866"	.073"	CHROME SILICON
927-073-UW	.927"	.073"	CHROME SILICON
945-073-UW	.945"	.073"	CHROME SILICON

BUTTONS

In the past, pin buttons were most often found in blown engine applications using gas, alcohol, and nitro methane. Due to their reputation for durability under the most severe operating conditions, pin buttons have found their way into many endurance and high performance engine applications of all types. Pin buttons work well at any horsepower level; and can be used on anything from a mild street engine to a top fuel drag bike.

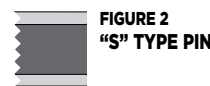
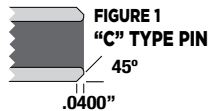
Due to certain or specific piston designs or applications, the use of an aluminum pin button may be necessary. The primary use of a pin button is to support the oil ring in instances where the oil ring intersects the wrist pin hole. JE can manufacture pin buttons for most any piston combination. Please note; pistons must be specifically designed to use pin buttons. The installation of pin buttons into pistons originally designed to use wire locks or spiro locks will result in severe engine damage.





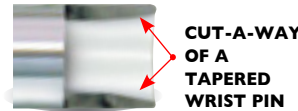
Lock Types "C or S"

All pin part numbers that end with "C" have a 45° chamfer on the ends of the pin (see figure 1) and are designed to be used with wire locks only. Wire locks help to distribute side loading over the entire piston pin boss area thereby increasing piston strength. It is important to note that JE "C" type pins have a deeper chamfer groove (.040" as shown) than many other manufacturers. "S" type wrist pins have a sharp edge (see figure 2) and are designed for use with spiro type and Tru Arc locks.



95 & P6 Series Tapered Pins

Tapered wall pins are designed for the highest strength to weight ratio possible while the length of the taper has been optimized for the piston pin boss span. JE tapered wall pins are hand lapped to the finest I.D. finish available in the industry.



PART NUMBER BREAKDOWN

927-2500-15-93C

DIAMETER .927" - Overall length of wrist pin in inches. LENGTH 2.500" - Overall length of wrist pin in inches. WALL THICKNESS .150" - Number indicates first two decimal places. SERIES Material Type. LOCK TYPE "C" or "S"

Upgrade to DLC Coated Pins!

Need more wear protection? JE now offers upgraded DLC wrist pins for most shelf and custom pistons!

Don't be fooled by other "coated" or "treated" wrist pins; JE's DLC coated pins offer superior wear resistance and enhance life.

DLC (Diamond Like Carbon) is an extremely hard, wear resistant coating with a very low friction coefficient of 0.1-0.2. Excellent adhesion to steel and Titanium is achieved via a plasma assisted chemical vapor deposition (PACVD) process. During this process sp2 and sp3 carbon atoms form diamond shaped bonds with the base material thereby earning the name Diamond Like Carbon. The wear resistance and non-stick performance of DLC make it an excellent addition to wrist pins for the prevention of pin bore galling.



SERIES LEGEND

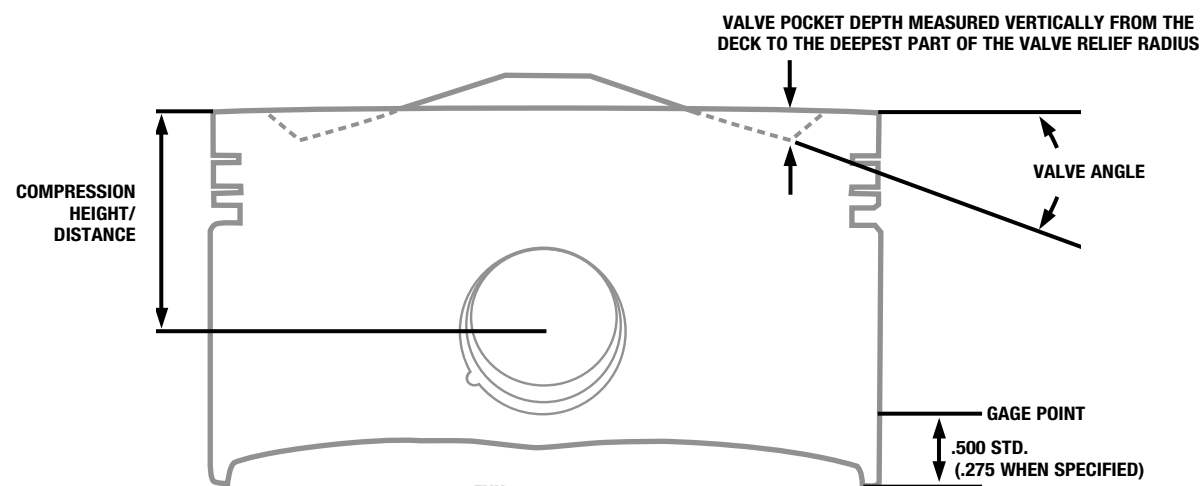
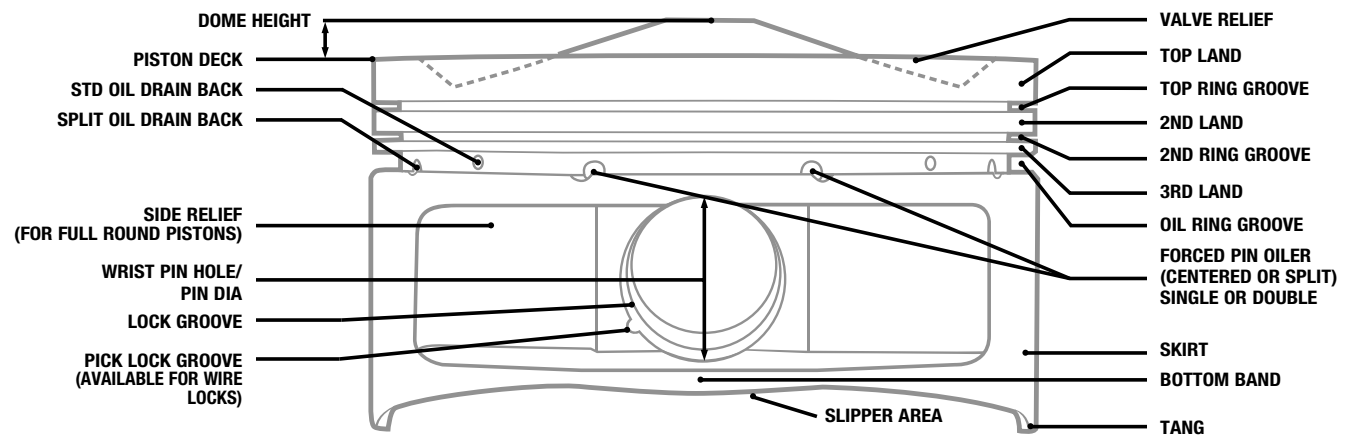
- 51 SERIES - 5115 LOW CARBON STEEL, CASE HARDENED, STRAIGHT WALL
52 SERIES - 52100 HIGH CARBON STEEL, THROUGH HARDENED, STRAIGHT WALL
93 SERIES - 9310 NICKEL CARBON STEEL ALLOY, STRAIGHT WALL
95 SERIES - 9310 NICKEL CARBON STEEL ALLOY, TAPERED WALL
CT SERIES - S7 THROUGH HARDENED TAPERED WALL
PS SERIES - 9310 NICKEL CARBON STEEL ALLOY PRECISION STRAIGHT WALL
PT SERIES - 9310 NICKEL CARBON STEEL ALLOY PRECISION TAPERED WALL
P6 SERIES - 9310 NICKEL CARBON STEEL ALLOY PRECISION TAPERED WALL DLC COATED
34 SERIES - DLC CASIDIAM COATED STRAIGHT WALL
38 SERIES - C350 CASIDIAM COATED STRAIGHT WALL
46 SERIES - TITANIUM DLC COATED STRAIGHT WALL
64 SERIES - GKHW DLC COATED STRAIGHT WALL
66 SERIES - GKHW DLC COATED TAPERED WALL
72 SERIES - 300M STRAIGHT WALL
94 SERIES - 9310 NICKEL CARBON STEEL ALLOY WITH DLC COATING



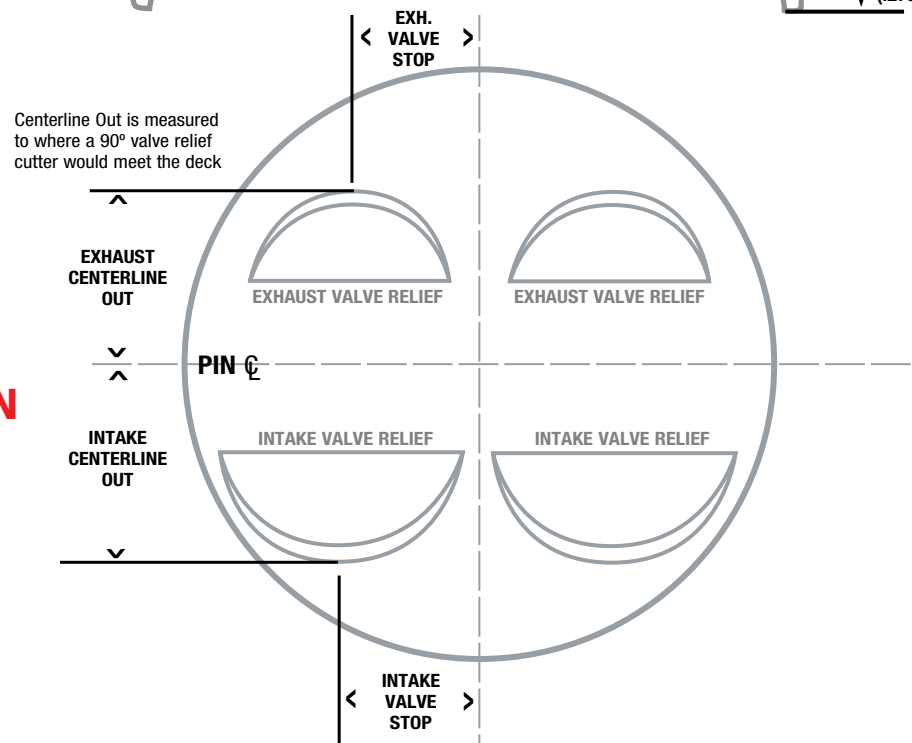
Table with 10 columns: PART #, WEIGHT (g), PART #, WEIGHT (g), PART #, WEIGHT (g), PART #, WEIGHT (g), PART #, WEIGHT (g). Contains a comprehensive list of wrist pin part numbers and their weights.



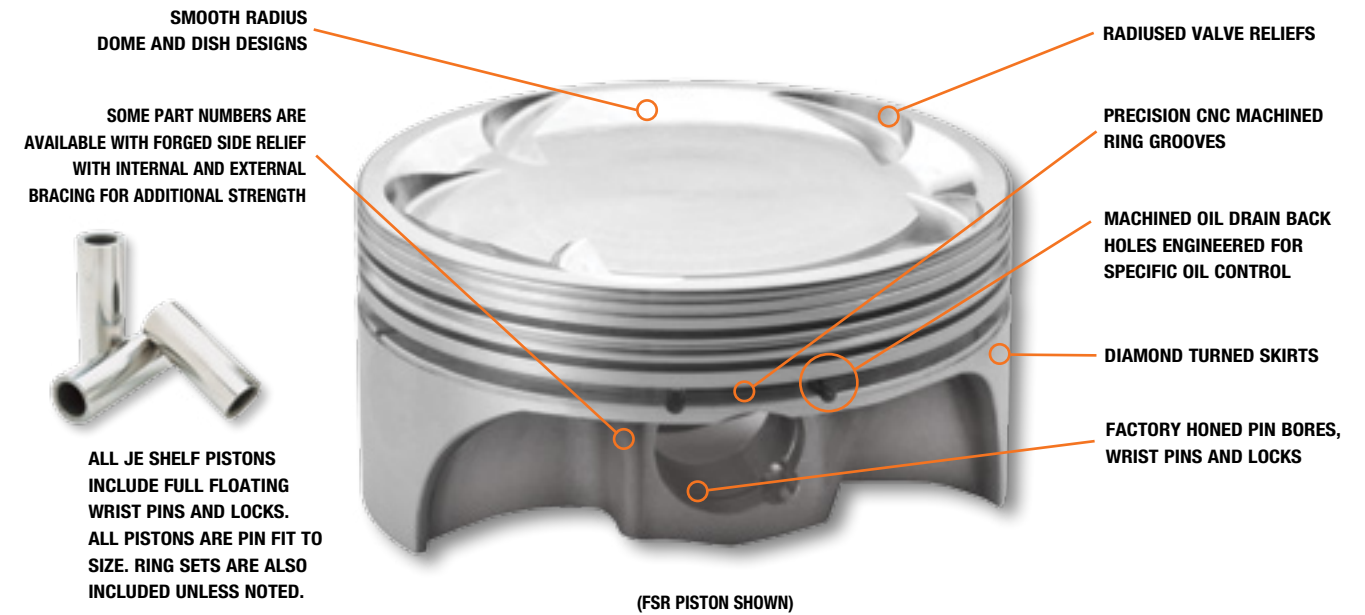
PISTON TERMINOLOGY



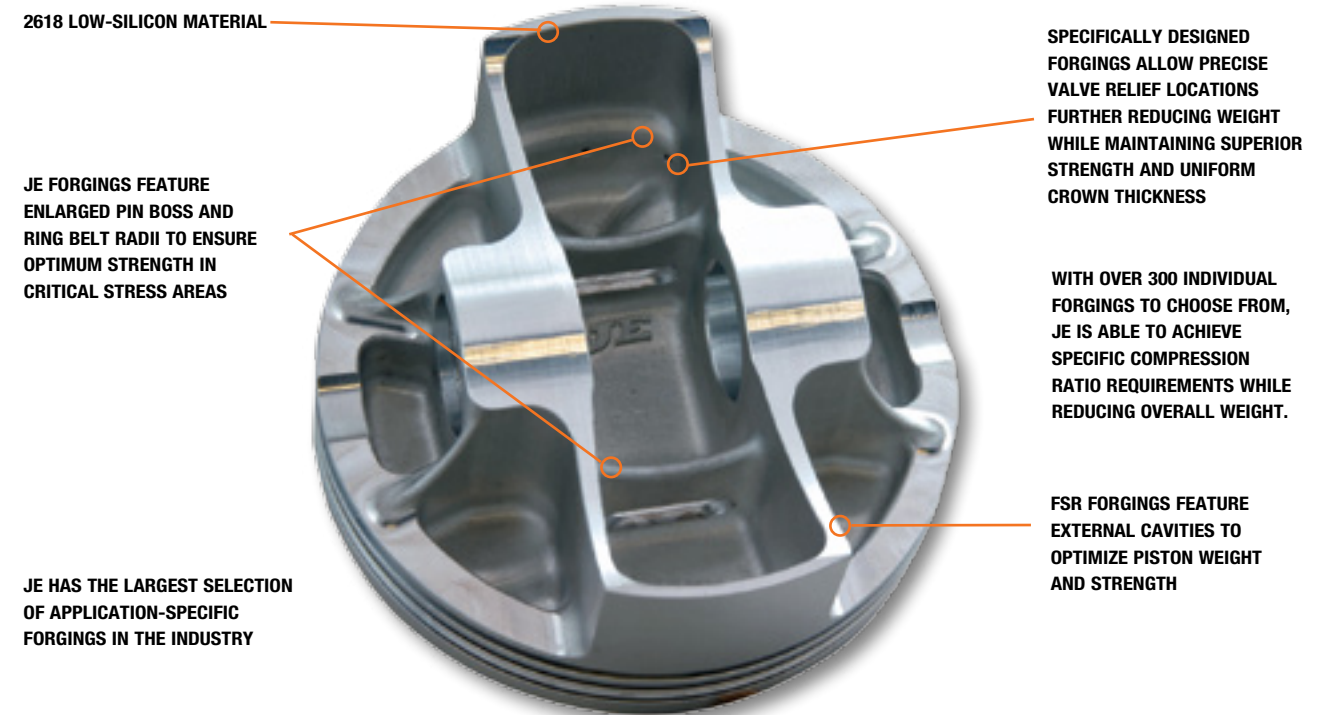
VALVE LOCATION



SHELF PISTON FEATURES



SHELF PISTON FORGING FEATURES





CUSTOM PISTON **OPTIONS**

CUSTOM PISTON **FEATURES**

**(CD) Contact Reduction Grooves:**

The purpose of machining these grooves is to reduce the amount of contact area against the cylinder wall when the piston "rocks over". Contact reduction also serves to disrupt the flame travel into the crevice area thus helping to reduce detonation.

(AG) Accumulator Grooves:

An accumulator groove is machined into the land between the top and second ring. It provides additional volume where residual combustion gases that have "blown by" the top ring can collect. This additional volume helps to reduce pressure between the top & second ring, thus aiding in top ring seal and minimizing ring flutter.

(DP) Double Pin Oilers:

Double Pin Oilers deliver twice the amount of oil to the wrist pin as compared to the standard single pin oiler.

(PF) Pin Fitting:

The pin bore is precision honed to attain an exact pin clearance. Clearances typically range from .0003 to .0010 between the wrist pin and pin bore.

(NS) Notch Skirt:

Notching can be done on pistons for motors with oil squirters, or to avoid contact between pistons and/or pistons and crankshaft.

(BO) Bottom Oilers:

This process machines one or two holes into the bottom of the pin boss to assist in splash pin lubrication.

(TV) Tulip Valve Pockets:

Most commonly used on Hemi and motorcycle engines, this process leaves a raised area on plunged valve pockets to achieve maximum compression.

CUSTOM FEATURE CODES

CODE	DESCRIPTION	CODE	DESCRIPTION
PF	Honed Pin Bore (Pin Fitting)	MILLING OPTIONS	
CD	Contact Reduction Grooves	PB	Plunge Bosses (Interior or Exterior)
KK	Kool Kote (Hard Anodizing)	SB	Spin Boss
SC	Skirt Coating	CB	Chamfer Pin Boss
AG	Accumulator Groove	MC	Mill Under Crown
LG	Lateral Gas Ports (10*)	MB	Mill Pin Boss Width
VG	Vertical Gas Ports	WM	Mill Skirt or Window Mill
VL	Vertical & Lateral Gas Ports	FM	Cavity Milling
UG	Ultra Groove	SE	Skirt Register
UP	Ultra Groove with Lateral Gas Ports (10*)	ULTRA CROWN	
UV	Ultra Groove with Vertical Gas Ports	US	One-Time Engineering Fee
DP	Double Pin Oilers	UD	Machining per Piston Dome
BO	4 Bottom Pin Oilers	UC	Machining per Piston Inverted Dome
PV	Plunged Valve Reliefs	FORGED SIDE RELIEF	
TV	Tulip Valve Pockets	FS	FSR - Forged Side Relief
NS	Notch Skirt	FE	FSR - external bracing and cavities
OP	Offset Pin	FC	FSR - external and internal bracing and cavities

* 10 Gas Ports Standard, Additional Gas Ports Incur an Extra Charge

CUSTOM PISTON STANDARD FEATURES

- Fully CNC Machined Piston
- Precision Machined CNC Ring Grooves
- 2618 Low-Silicon Alloy
- Diamond Turned Skirts
- Radiused Valve Reliefs
- Single Forced Pin Oilers
- Pick Lock Grooves (for use with wire locks)
- Machined Side Reliefs on full round forgings