



2013
CATALOG



2012:13 WELCOME

Over the next few pages we will introduce you to the all-new 2012/13 watersports lineup, this year the innovation has reached new heights, the designs and colours are functional and fresh, and the durability of our products has been tested to the limits by our worldwide team.

This season we are bringing you everything you need to get in the water and stay in the water longer, some of our key pieces include our A-Tron series wetsuits with all new 3d patterns and chest zip designs, for our PWC enthusiast we are reissuing the F-20 tigershark suit and vest series from 1990, yesterdays look with today's materials and technology and our C4 PFD features Fire fur technology to help keep you in the water longer.

Jetpilot has been in the watersports game for the past 26 years and in that time we have continually raised the bar on innovation and performance orientated products every single year and this year is no different.

Performance through Innovation



 BRENTON PREISTLY



 BEC GANGE



 CHRIS OSHEA



 BRETT BURCHER

PERFORMANCE
THROUGH
INNOVATION

RIDER PROVEN FOR OVER 25 YEARS

VEST TECH

For 2012/13 we will introduce you to the all new line of vests, this year the innovation has reached new heights and we are excited to bring this line to life. The Black C4 features Segmented construction, Seal Skin outer and Fire Fur lining through the lumbar to help you ride longer in those cooler months, The Chris O'Shea vest is our top of the line wake vest and is tried and tested by the best in the business. For the PWC riders we have the top end NIGHTHAWK with its sleek fit, lumbar support and SUPER GRIP handles as well as the F-20 Tigershark series nylon jackets that match back with the retro Tigershark suits.

We have been in the game for the past 26 years and we continue to develop ground breaking rider inspired vests for the watersports market,

Performance through Innovation

SIZE CHART

The size chart is to be used as a guide only. If you are between sizes we suggest going to the next larger size. All suits not available in all sizes - Correct fitting can only be determined by trying on the wetsuit.

MENS	XS	S	M	MT	L	XL	BXL
CHEST (cm)	84-89	89-94	94-99	94-99	99-104	104-109	109-114
WAIST (cm)	64-69	69-74	74-79	74-79	79-84	84-89	89-94
HEIGHT (cm)	155-163	163-168	168-173	180-183	173-178	178-183	183-186
WEIGHT (kg)	55-64	61-70	68-77	73-82	75-84	82-91	86-95

GIRLS	XS	S	M	L	XL
BUST (cm)	81-86	85-90	89-94	83-98	97+
WAIST (cm)	58-64	62-67	66-71	70-75	74+
HEIGHT (cm)	163-168	165-170	168-173	170-175	175+
WEIGHT (kg)	45-52	50-57	57-55	59-66	68+

KIDS	XS	S	M	L	XL	BXL
AGE	4	6	8	10	12	14
HEIGHT (cm)	114	127	140	152	165	168
WEIGHT (kg)	22	25	28	32	35	39+



FEATURES



SIDE ENTRY

US PATENT APPROVED TECHNOLOGY. PIONEERED, TESTED AND PREFERRED BY OUR TEAM



LUMBAR SUPPORT

STRATEGIC LOWER BACK SUPPORT FOR AN OVERALL BETTER FIT.



FLUSH LOC

SUPER STRONG FLAT SEAM CONSTRUCTION FOR ADDED DURABILITY & COMFORT



HIDDEN WEBBING

BELTS ARE HIDDEN & SECURED BE-NEATH THE NEOPRENE LAYER TO PREVENT SNAGGING



FLEX-LITE ULTRA

IMPORTED SUPREME ULTRA-STRETCH, ULTRA-LITE, ULTRA-WARM NEOPRENE



FLEX-LIGHT

ULTRA STRETCH SUPER LIGHT NEOPRENE, FREEDOM OF MOVEMENT WITH MINIMAL RESISTANCE



LIQUI-STRETCH

JET PILOT'S EXCLUSIVE WATER WICK FORMULATED FABRIC THAT WICKS AWAY MOISTURE AND DRIES ULTRA FAST



SEAL-SKIN

CLOSED CELL FLEX-LITE NEOPRENE. SHEDS WATER AND REDUCES WINDCHILL



FIRE-FUR

SYNTHETIC HOLLOW FIBER INTERIOR LINING THAT WICKS AWAY MOISTURE AND INSULATES WITH WARM DRY AIR



3-D AIR FOAM

ULTRA LIGHTWEIGHT FOAM THAT IS CUSTOM MOLDED TO THE HUMAN TORSO



ANATOMICAL

ARTICULATED PRE-BENT, FORM FITTING DESIGN FOR ADDED COMFORT AND LESS RESISTANCE



BEVELLED EDGES

EACH "FLEX CELL" IS BEVEL-CUT ALONG THE EDGES TO DECREASE OVERALL THICKNESS



MULTI-DENSITY CORE

INDIVIDUAL FLEX CELLS, VARYING IN THICKNESS TO MAXIMISE PERFORMANCE AND FUNCTION



FLEX-CELL TECHNOLOGY

INDIVIDUALLY CARVED FOAM CELLS LINKED TOGETHER WITH OVERLAPPED NEOPRENE RESULTING IN UNMATCHED FLEXIBILITY, COMFORT & PERFORMANCE

NEOPRENE

FORM & FUNCTION



S. BONIFAY

F-22
COMP JACKET

F-22

SHANE BONIFAY F22 COMP JACKET

JP3144

SHANE BONIFAY

SHANE BONIFAY COMP JACKET

JP3145



SIZES: XS, S, M, L, XL
 COLORWAYS: GREY, GREEN, ORANGE

- ALL 2MM NEOPRENE
- UNMATCHED STRETCH FOR PERFORMANCE
- A CLASSIC PULL-OVER DESIGN
- CUSTOM SCREEN PRINTED BRANDING

Shane Bonifay
 SIGNATURE SERIES



SIZES: XS, S, M, L, XL
 COLORWAYS: BLUE

- SHANE BONIFAY'S SIGNATURE VEST
- 100% FLEX-LITE STRETCH PANELS
- SUPER LIGHTWEIGHT DESIGN FOR COMFORT & FIT
- PVC FOAM CORE
- SHANE'S ALL NEW FRONT ZIP MODEL
- CUSTOM DENIM OUTER SUBLIMATED SHELL
- CUSTOM GRAPHICS & PATCHES INSPIRED BY THE LEGEND HIMSELF

Shane Bonifay
 SIGNATURE SERIES





 *Chris O'Shea*

O'Shea SIGNATURE SERIES



CHRIS O'SHEA

CHRIS O'SHEA COMP JACKET

JP3229



SIZES: XS, S, M, L, XL
COLORWAYS: BLACK, BLUE

- CHRIS O'SHEA'S SIGNATURE VEST
- 100% FLEX-LITE STRETCH PANELS
- SUPER LIGHTWEIGHT DESIGN FOR COMFORT & FIT
- PVC FOAM CORE
- CUSTOM FLANNEL PRINT LINING
- GLIDE SKIN UPPER PANELS FOR EXTRA COMFORT

O'Shea
SIGNATURE SERIES



TECH TONIC

TECHTONIC COMP JACKET

JA9999



SIZES: XS, S, M, L, XL
COLORWAYS: BLUE, BLACK

- 100% FLEX-LITE STRETCH PANELS
- SUPER LIGHTWEIGHT DESIGN FOR COMFORT & FIT
- PVC FOAM CORE





HEAT EDITION

C4 SEGMENTED F/E NEO VEST

JA2299



BLACK HEAT EDITION

FIRE FURR

STAY WARMER, RIDE LONGER.

FEATURING:

- NANO STRETCH SMOOTH SKIN
- SUPER LIGHTWEIGHT DESIGN FOR COMFORT & FIT
- PVC FOAM CORE FOR SUPREME BUOYANCY
- SHEDS WATER AND CUTS WIND CHILL
- WARM FIRE FURR INNER TO KEEP YOUR CORE FIRING IN COOLER CONDITIONS





C4 SEGMENTED F/E NEO VEST

JA2299



BLUE



SIZES: S, M, L, XL, 2XL

- 100% FLEX-LITE STRETCH PANELS PROVIDES INSANE STRETCH
- SUPER LIGHTWEIGHT DESIGN FOR COMFORT & FIT
- PVC FOAM CORE FOR SUPREME BUOYANCY
- ERGONOMIC SEGMENTED PANELS TO ENSURE ULTIMATE FIT
- CONTRAST ACCENT PANEL



BEVELLED EDGE



HIDDEN WEBBING



ANATOMICAL



FLEXLITE



BRENTON PRIESTLY



SHYHAWK ELITE
AUSTRALIAN STANDARDS APPROVED

SHYHAWK ELITE SEGMENTED F/E VEST

JA2228



BLUE



BLACK



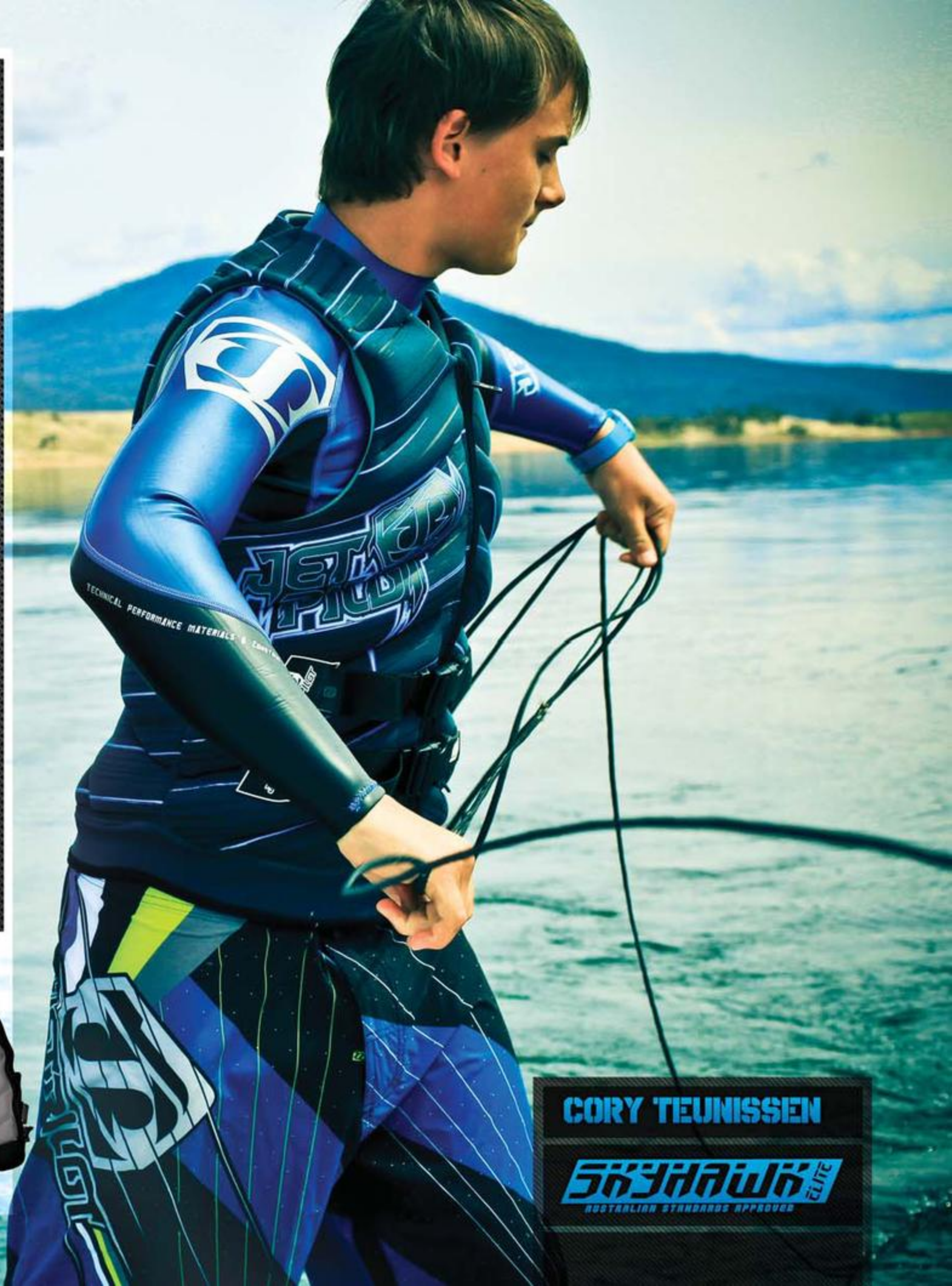
GREEN

SIZES: S, M, L, XL, 2XL

- FLEX-LITE NEO PANELS PROVIDES INSANE COMFORT & STRETCH
- FULLY SEGMENTED PANELS CONFORM YOUR BODY FOR THE ULTIMATE FIT
- FLEXCELL TECH LUMBAR SUPPORT WITH HIDEY BELT
- PVC FOAM CORE FOR SUPREME BUOYANCY
- HIDDEN WEBBING
- STASH POCKET ON INTERNAL LINING



MATCHING
LOWBACK SUPPORT
SEE SIZE APPAREL CAT



CORY TEUNISSEN

SHYHAWK ELITE
AUSTRALIAN STANDARDS APPROVED

A-10
Attack Vest

A-10 COMP VEST

JP3227



SIZES: XS/S, M, L, XL/2XL
COLORWAYS: BLUE, ORANGE, GREEN, BLACK

- SIDE-ENTRY - US PATENT APPROVED
- MOLDED SUPER LIGHT 3D EVA AIR FOAM
- INTEGRATED U-FLEX STRETCH PANELS
- 1/4" SUPER SOFT PUC INNER FOAM



2013 WETSUIT TECH

SIZE CHART

MENS SPRING AND JOHN

	XS	S	M	L	XL	2XL
CHEST (in)	34-36	36-38	38-40	40-42	42-44	44+
WAIST (in)	26-27	28-30	30-32	32-34	34-36	36+
HEIGHT (ft)	5'2-5'5	5'5-5'7	5'7-5'9	5'9-5'11	5'11-6'1	6'1+
WEIGHT (lbs)	130	145	160	180	200	220+

MENS FULLSUITS

	XS	S	M	MT	L	LT	XL	2XL
CHEST (in)	32-35	34-37	36-39	36-39	38-41	38-41	40-43	42+
WAIST (in)	24-27	27-30	27-30	29-32	31-34	32-35	33-36	36+
HEIGHT (ft)	5'1-5'5	5'4-5'7	5'6-5'9	5'10-6'0	5'8-5'11	6'0-6'3	5'10-6'1	6'+
WEIGHT (lbs)	120-140	130-155	145-170	155-180	165-190	175-200	185-205	205+

LADIES WETSUITS

	XS	S	M	L	XL
BUST (in)	32-34	33.5-35.5	35-37	36.5-38.5	38+
WAIST (in)	23-25	24.5-26.5	26-28	27.5-29.5	29+
HEIGHT (ft)	5'4-5'6	5'5-5'7	5'6-5'8	5'7-5'9	5'9+
WEIGHT (lbs)	100-115	110-125	120-125	130-145	150+

KIDS WETSUITS

	6	8	10	12	14	16
CHEST (in)	25-26	26-27	27-28	28-30	29-31	31-33
WAIST (in)	21-22	22-23	23-24	24-26	25-27	27-29
HEIGHT (ft)	4'6-4'8	4'8-4'10	4'10-5'1	4'11-5'1	5-5'3	5'1-5'4
WEIGHT (lbs)	50-60	60-70	70-80	80-90	90-105	105-120

The size chart is to be used as a guide only. If you are between sizes we suggest going to the next larger size. All suits not available in all sizes - Correct fitting can only be determined by trying on the wetsuit.



FEATURES



FRONT CHEST ENTRY SYSTEM FOR INCREASED FLEXIBILITY, WATER SEAL, AND COMFORT



FLEX-LITE ADJUSTABLE COLLAR. COMFORTABLE, FLUSH RESISTANT NECK SEAL



FLEX BONDED & EMBOSSED KNEE PADS, FLEXIBLE & DURABLE, ABRASION RESISTANCE.



FLUSH RESISTANT ARM & LEG CUFFS. HIGHLY EXPANDABLE FOR EASY ON/OFF

NEOPRENE



IMPORTED SUPREME ULTRA-STRETCH, ULTRA-LITE, ULTRA-WARM NEOPRENE



ULTRA STRETCH SUPER LIGHT NEOPRENE, FREEDOM OF MOVEMENT WITH MINIMAL RESISTANCE



CLOSED CELL FLEX-LITE NEOPRENE. SHEDS WATER AND REDUCES WINDCHILL



HIGHLY DURABLE AND FLEXIBLE PADDED NEOPRENE FOR ABRASION RESISTANCE

CONSTRUCTION



THREAD IS HIDDEN AND PROTECTED WITHIN THE SUIT SEAMS & COATED WITH SLICK-GEL CREATING A STRONG WATERPROOF SEAL



SUPER STRONG FLAT SEAM CONSTRUCTION FOR ADDED DURABILITY & COMFORT



ULTRA-FLEX WATERPROOF SILICON SEAM TAPE FOR UNMATCHED SEAL & FLEXIBILITY



SPOT TAPING AT HIGH STRESS SEAM INTERSECTIONS FOR A STRONG, WATER TIGHT BOND

A-TRON SERIES

PLASMATIC INSULATION WETSUITS



CHRIS OSHEA



A-TRON 4/3MM FULLSUIT

JP1163

SIZES: XS, S, M, MT, L, XL, XXL
COLORWAYS: BLACK

- 100% MAGIC STITCHED WITH SLICK-GEL SEAL
- FLEX-LITE ULTRA WATER RESISTANT NEOPRENE
- SLANT LOCK ENTRY SYSTEM & INTEGRATED NECK SEAL
- 3D PATTERN SYSTEM FOR A SUPERIOR FIT



A-TRON 3/2MM FULLSUIT

JP1164

SIZES: XS, S, M, MT, L, LT, XL, XXL
COLORWAYS: BLACK, GREEN

- 100% MAGIC STITCHED WITH SLICK-GEL SEAL
- FLEX-LITE ULTRA WATER RESISTANT NEOPRENE
- SLANT LOCK ENTRY SYSTEM & INTEGRATED NECK SEAL
- 3D PATTERN SYSTEM FOR A SUPERIOR FIT



A-TRON 2MM CHEST ZIP FULLSUIT

JA2165

SIZES: S, M, L, XL, XXL
COLOURWAYS: BLACK

- NEW ATRON SLANT-ZIP ENTRY
- THE NEW TECHNOLOGY LEADER FOR 2012
- 100% MAGIC STITCHED
- S-BEND JOINTS FOR MAXIMUM FLEXIBILITY
- FLEX-LITE ULTRA WATER RESISTANT NEOPRENE
- INTEGRATED NECK SEAL
- 3-D PATTERN SYSTEM FOR A SUPERIOR FIT
- STRATEGIC ALL-OVER TECHNICAL PRINTS
- CUSTOM SCREEN PRINTS



LIMITED STOCK AVAILABLE MARCH 2012



CAUSE 3/2MM FULLSUIT

JP3130

SIZES: XS, S, M, MT, L, XL, XXL
 COLORWAYS: BLACK, BLUE

- 3MM & 2MM FLEX-LITE NEOPRENE PANELS
- 100% SUPER STRONG FLUSH-LOC SEAMS
- BREATHABLE CONSTRUCTION FOR COOL CONDITIONS
- SEAL SKIN PANELS



CAUSE LONG-SLEEVE SPRING

JP3139

SIZES: XS, S, M, L, XL, XXL
 COLORWAYS: BLACK, BLUE

- 2MM FLEX-LITE ULTRA STRETCH NEOPRENE PANELS
- 100% SUPER STRONG FLUSH-LOC SEAMS
- BREATHABLE CONSTRUCTION
- SCREEN PRINTED LOGO DETAILS
- SEAL SKIN PANELS



CAUSE SHORT-SLEEVE SPRING

JP3138

SIZES: XS, S, M, L, XL, XXL
 COLORWAYS: BLACK, BLUE, RED

- 2MM FLEX-LITE ULTRA STRETCH NEOPRENE PANELS
- 100% SUPER STRONG FLUSH-LOC SEAMS
- BREATHABLE CONSTRUCTION
- SCREEN PRINTED LOGO DETAILS
- SEAL SKIN PANELS





A-TRON SPRING

JP2136

SIZES: XS, S, M, L, XL, XXL
 COLORWAYS: BLACK, BLUE, GREEN

- SLANT LOCK ENTRY SYSTEM & INTEGRATED NECK SEAL
- 2MM FLEX-LITE ULTRA STRETCH NEOPRENE
- 100% SUPER STRONG FLUSH-LOC SEAMS
- BREATHABLE CONSTRUCTION
- SCREEN PRINTED LOGO DETAILS



A-TRON SHORT JOHN

JP2135

SIZES: XS, S, M, L, XL, XXL
 COLORWAYS: GREY, BLUE, GREEN

- 2MM FLEX-LITE ULTRA STRETCH NEOPRENE PANELS
- 100% SUPER STRONG FLUSH-LOC SEAMS
- BREATHABLE CONSTRUCTION
- SCREEN PRINTED LOGO DETAILS



N
AY



F-38
FLIGHT JACKET

IDRU ADLER



F-38 FLIGHT JACKET

JP2131

SIZES: S, M, L, XL, 2XL
COLOURWAYS: SILVER, BLUE

- ALL 1MM GLIDESKIN
- UNMATCHED STRETCH FOR COMFORT & FIT
- NEW SIDE ZIP FOR EASY ENTRY/EXIT
- SCREEN PRINTED DETAILS
- CUTS WINDCHILL & U.V. RAYS



LIMITED STOCK AVAILABLE MARCH 2012



LIMITED STOCK AVAILABLE MARCH 2012



F-18 FLIGHT JACKET

JP2134

SIZES: S, M, L, XL, 2XL
COLOURWAYS: BLACK, BLUE

- 1MM FLEX-LITE NEOPRENE
- UNMATCHED STRETCH FOR COMFORT & FIT
- NEW SIDE ZIP FOR EASY ENTRY/EXIT
- SCREEN PRINTED DETAILS
- CUTS WINDCHILL & U.V. RAYS



F-15 THERMALITE FLIGHT JACKET

JA2556

SIZES: S, M, L, XL, 2XL
COLOURWAYS: BLACK

- ALL 1MM FLEX-LITE NEOPRENE
- THERMALITE LINING FOR ULTIMATE WARMTH
- UNMATCHED STRETCH FOR COMFORT & FIT
- CUTS WINDCHILL & U.V. RAYS
- SCREEN PRINT DETAILS
- CUSTOM SUBLIMATION





BEC GANGE

F-22

F-22

LADIES F-22 SEGMENTED F/E NEO VEST

JA2208



SIZES: 8, 10, 12, 14, 16

- PVC FOAM CORE FOR SUPREME BUOYANCY
- ULTRA LITE WEIGHT CONSTRUCTION & DESIGN
- CUSTOM DESIGNED & DEVELOPED LEOPARD PRINT ON GLIDESKIN
- FLEX-LITE NEOPRENE FOR SUPREME STRETCH



BEVELLED EDGE

HIDDEN WEBBING

ANATOMICAL

FLEXLITE



GETPILOT



F-22
COMP JACKET

TECH
TONIC

TECHTONIC COMP JACKET

JA3110



SIZES: 8, 10, 12, 14, 16

- FULLY SEGMENTED PANELS CONFORM YOUR BODY SHAPE
- FLEXCELL TECH LUMBAR SUPPORT
- HIDDEN WEBBING
- THE MOST COMFORTABLE VEST EVER!
- FLEX-LITE NEOPRENE FOR SUPREME STRETCH



TECH
TRICK

TECH TRICK COMP JACKET

JA3111



SIZES: 8, 10, 12, 14, 16

- FULLY SEGMENTED PANELS CONFORM YOUR BODY SHAPE
- FLEXCELL TECH LUMBAR SUPPORT
- HIDDEN WEBBING
- THE MOST COMFORTABLE VEST EVER!
- FLEX-LITE NEOPRENE FOR SUPREME STRETCH





SKYHAWK ELITE
AUSTRALIAN STANDARDS APPROVED

BEC GANGE



SHYHAWH ELITE SEGMENTED F/E NEO VEST

JA2209



BLACK



PURPLE

SIZES: 8, 10, 12, 14, 16

- FULLY SEGMENTED PANELS CONFORM YOUR BODY SHAPE
- FLEXCELL TECH LUMBAR SUPPORT
- HIDDEN WEBBING
- THE MOST COMFORTABLE VEST EVER!
- FLEX-LITE NEOPRENE FOR SUPREME STRETCH
- HIDDEN STASH POCKET INSIDE



FLIGHT APPROVED NEO PFD

JP2203

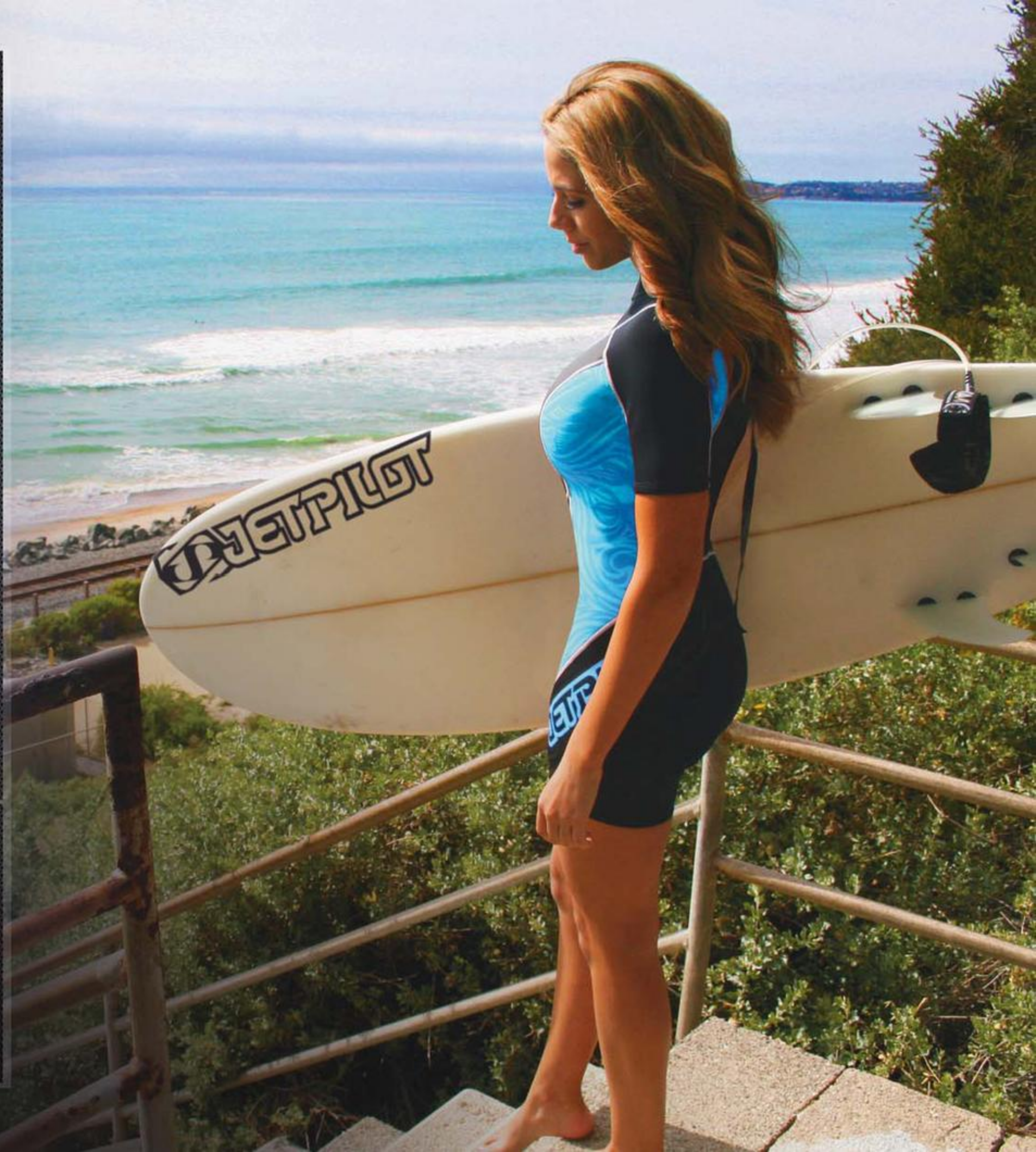


SIZES: S, M, L, XL, 2XL

COLORWAYS: BLACK, PINK, TURQUOISE

- 2-BUCKLE DESIGN WITH HIDDEN WEBBING
- MULTIPLE SEGMENTED PANELS
- CUSTOM GRAPHICS
- SCREEN PRINTED BRANDING
- MESH DRAINAGE PANEL
- U.S. COAST GUARD APPROVED





FLIGHT SPRING

JP3107

SIZES: XS, S, M, L, XL
 COLORWAYS: GREY, TURQUOISE

- FIT SPECIFICALLY FOR WOMEN
- ALL 2MM NEOPRENE
- FLEX-LITE ULTRA STRETCH NEOPRENE PANELS
- TONE-ON-TONE PRINT
- FLUSH-LOC STITCH CONSTRUCTION
- SPANDEX KEY POCKET





LADIES CAUSE FULLSUIT 3/2MM

JA2104

SIZES: 8, 10, 12, 14, 16
COLOURWAYS: BLACK

- 100% SUPER STRONG FLUSH-LOC COMFORT SEAMS
- BREATHABLE CONSTRUCTION FOR COOL CONDITIONS
- SUPERIOR FIT SPECIFICALLY FOR LADIES
- SUPER STRETCH NED IN UNDER ARM PANELS



F-15
FLIGHT JACKET

ANGIE KOOPS

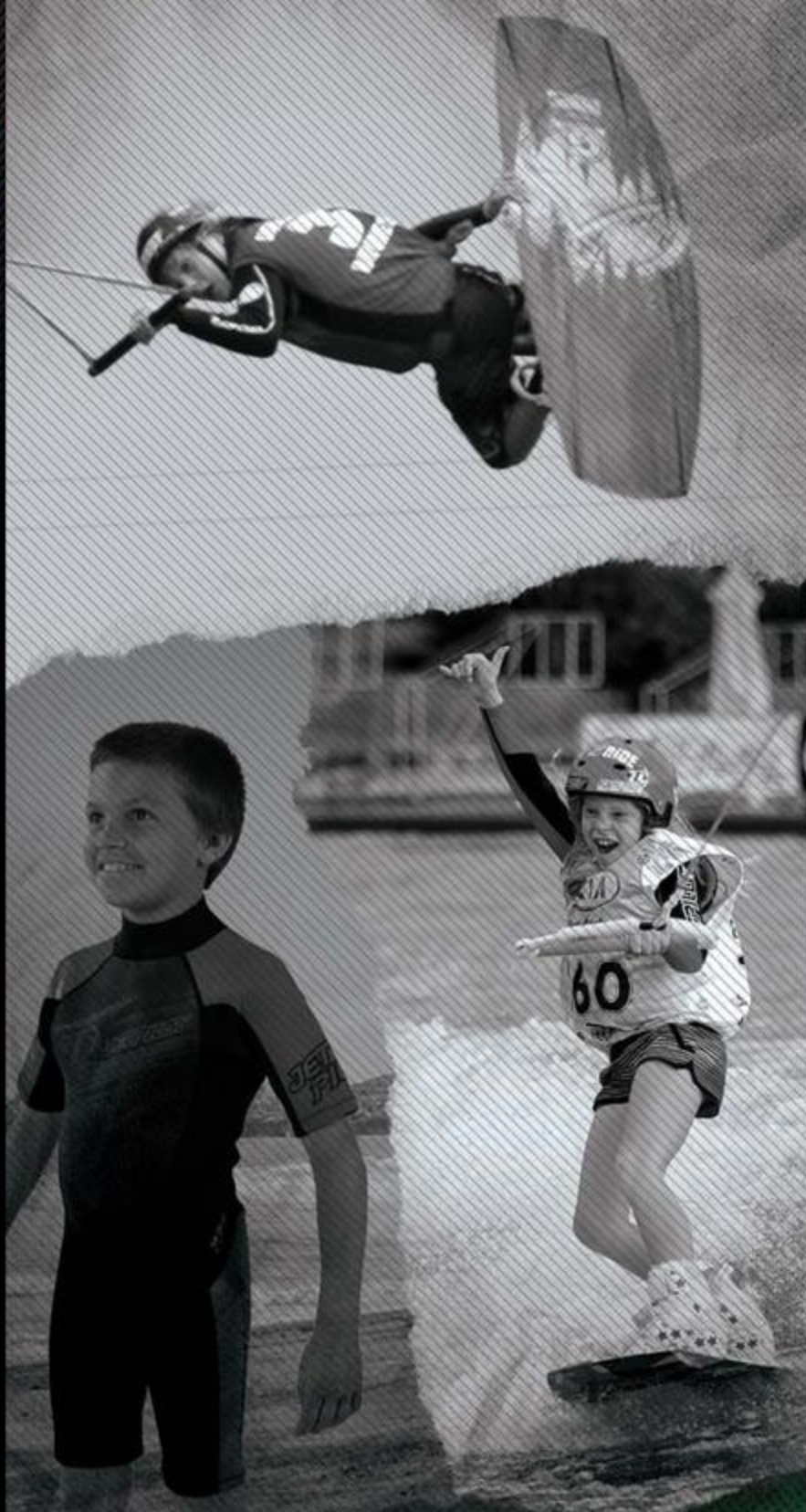
LADIES F-15W THERMALITE FLIGHT JACKET

JA2915

SIZES: 8, 10, 12, 14, 16
COLOURWAYS: BLACK

- ALL 1MM FLEX-LITE NEOPRENE
- THERMALITE LINING FOR ULTIMATE WARMTH
- UNMATCHED STRETCH FOR COMFORT & FIT
- CUTS WINDCHILL & U.V. RAYS
- SCREEN PRINT DETAILS
- CUSTOM SUBLIMATION
- ELASTIC CINCH CORD FOR WAIST





JETPILOTS
YOUTH
GONE
WILD

YOUTH CAUSE FULLSUIT

JP3112

SIZES: 10, 12, 14, 16
 COLORWAYS: BLACK

- 100% FLEX-LITE NEOPRENE
- 100% SUPER STRONG FLUSH-LOC SEAMS
- BREATHABLE CONSTRUCTION FOR COOL CONDITIONS
- SEAL SKIN PANELS
- CLASSIC JETPILOT BRANDING



FLEX-LITE



SEAL-SKIN



FLUSH-LOC



SEAL-SKIN



GLIDE-GASKET



ANATOMICAL

YOUTH CAUSE SPRING

JP3110

SIZES: 6, 8, 10, 12, 14, 16
 COLORWAYS: BLACK, BLUE

- ALL 2MM FLEX-LITE NEOPRENE
- UNMATCHED STRETCH FOR PERFORMANCE
- NEW IMPROVED FIT AND SIZING



FLEX-LITE



SEAL-SKIN



FLUSH-LOC



SEAL-SKIN



GLIDE-GASKET



ANATOMICAL

PISTOL

PISTOL NYLON APPROVED PFD

JP3242



YOUTH

JP3241



CHILD

JP3240



INFANT

COLORWAYS: PINK, YELLOW

- YOUTH - THREE BUCKLE DESIGN (NO PILLOW / CROTCH STRAP)
- CHILD - THREE BUCKLE DESIGN WITH CROTCH STRAP
- INFANT - TWO BUCKLE DESIGN, PILLOW AND CROTCH STRAP
- CLASSIC CENTER CHEST ENTRY
- CROTCH STRAP TO KEEP THE VEST SECURE
- BRIGHT COLORS FOR VISIBILITY
- CUSTOM JETPILOT SCREEN PRINTED BRANDING
- GRAB STRAP (CHILD / INFANT)
- U.S. COAST GUARD APPROVED

FIRECRACKER

FIRECRACKER APPROVED PFD

JP3245



YOUTH

JP3244



CHILD

JP3243



INFANT

COLORWAYS: PINK, BLUE

- YOUTH - TWO BUCKLE DESIGN (NO PILLOW / CROTCH STRAP)
- CHILD - TWO BUCKLE DESIGN WITH CROTCH STRAP
- INFANT - SINGLE BUCKLE DESIGN, PILLOW AND CROTCH STRAP
- CLASSIC CENTER CHEST ZIP ENTRY
- BRIGHT COLORS FOR VISIBILITY
- CUSTOM JETPILOT SCREEN PRINTED BRANDING
- SIDE EXPANSION PANEL (YOUTH / CHILD)
- U.S. COAST GUARD APPROVED





MR. CORPO L/S RASHGUARD

JP2525

SIZES: XS, S, M, L, XL, XXL
COLORWAYS: BLACK, WHITE

- 60Z FOUR WAY STRETCH SPANDEX
- FLUSH-LOC SEAMS
- U.V. PROTECTION
- CLASSIC JETPILOT BRANDING



MR. CORPO S/S RASHGUARD

JP2524

SIZES: XS, S, M, L, XL, XXL
COLORWAYS: BLACK, WHITE

- 60Z FOUR WAY STRETCH SPANDEX
- FLUSH-LOC SEAMS
- U.V. PROTECTION
- CLASSIC JETPILOT BRANDING



MRS. CORPO L/S RASHGUARD

JP1505

SIZES: XS, S, M, L, XL
COLORWAYS: BLACK, PINK, WHITE

- 60Z FOUR WAY STRETCH SPANDEX
- FLUSH-LOC SEAMS
- U.V. PROTECTION
- CLASSIC JETPILOT BRANDING



MRS. CORPO S/S RASHGUARD

JP1506

SIZES: XS, S, M, L, XL
 COLORWAYS: BLACK, PINK, WHITE

- 60Z FOUR WAY STRETCH SPANDEX
- FLUSH-LOC SEAMS
- U.V. PROTECTION
- CLASSIC JETPILOT BRANDING



YOUTH MR. CORPO L/S RASHGUARD

JP3523

SIZES: 10, 12, 14, 16
 COLORWAYS: BLACK, WHITE

- 60Z FOUR WAY STRETCH SPANDEX
- FLUSH-LOC SEAMS
- U.V. PROTECTION
- CLASSIC JETPILOT BRANDING
- NEW IMPROVED FIT AND SIZING



YOUTH MR. CORPO S/S RASHGUARD

JP3522

SIZES: 10, 12, 14, 16
 COLORWAYS: BLACK, WHITE

- 60Z FOUR WAY STRETCH SPANDEX
- FLUSH-LOC SEAMS
- U.V. PROTECTION
- CLASSIC JETPILOT BRANDING
- NEW IMPROVED FIT AND SIZING



JP DELUXE TOW ROPE COMBO

JP2998

W/S EXCL GST: \$86.36

W/S INCL GST: \$95.00

ONE SIZE

YELLOW

Built for Tow in Surfing - Traction Powergrip handle - 12" Handle width designed to minimise potential arm, foot and head entrapment - 10' High flotation rope designed to avoid PWC intake and wear on contact points - Special rope weave eliminates coiling and tangling - 35' total length of polypropylene non water absorbing rope with a custom black float - High visibility yellow - Marine grade Stainless Steel quick attach anti-fray snap hook



JP WAKE TOW ROPE COMBO

JP2995

W/S EXCL GST: \$38.18

W/S INCL GST: \$42.00

ONE SIZE

YELLOW

15" Custom "Super Grip" diamond pattern EVA handle - Custom JP end caps and float - 4 Section 15' PE mainline - Custom JP velcro rope hanger

Looking for dependable powersports riding gear? Rely on Jet Pilot for quality and long-lasting products.