

**KOSO**   
NORTH AMERICA

---



# Koso's philosophy

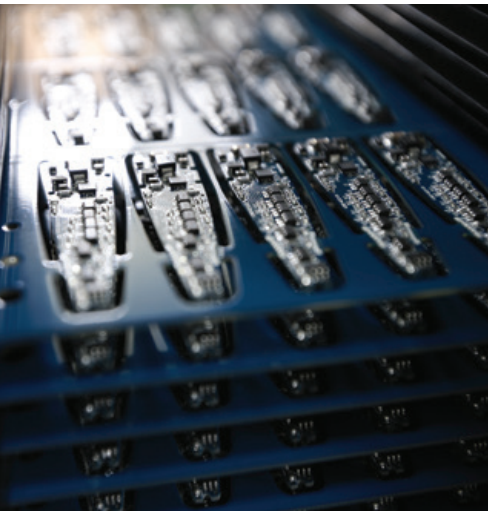
---

Koso, a synonym for quality and performance. With more than 35 years of experience designing and manufacturing high quality products, Koso has become well known across the powersports and OEM industries for its good reputation for reliability, innovation and capability. Whether we are manufacturing a product under private label, OEM or aftermarket products quality always remains our top priority. Innovation and creating new technologies are the keys to Koso's philosophy and drives us to continue pushing the limit further.

For several years now, Koso has had the opportunity to work with an outstanding team of engineers. Along with our state of the art testing equipment and production facilities, Koso has remained a leader in analog and digital technology. Koso produces a wide range of quality gauges/meters, heated equipment, LED indicators taillights and headlights as well as mirrors and engine parts. Koso is proud to offer a complete line of quality products for serious riders.

---

**KOSO**   
NORTHAMERICA



# KCR

## KCR carburetor fits 2 strokes

Our Koso KCR carburetor was designed to maximize the air/fuel ratio for a better performance. Built from the best quality components, this 28 mm carburetor offers many customizing options with choice, such as various jet and needle sizes.



part

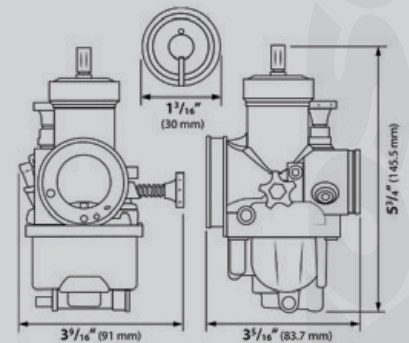
**DA28C000**



## Specifications

(R = Range U= Unit)

- Carburetor size  
28mm
- Jet needle setting  
R: 3
- Slow jet  
#42
- Main jet  
#122





# KSR

part

**DA928300**

28 mm

**DA930300**

30mm

**DA932300**

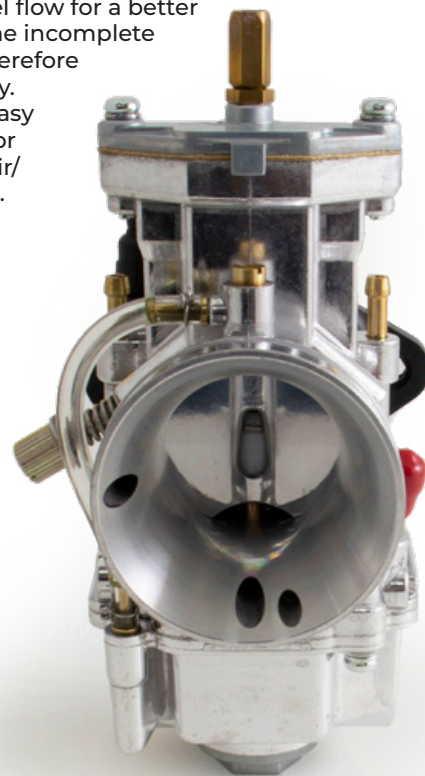
32mm

**DA934300**

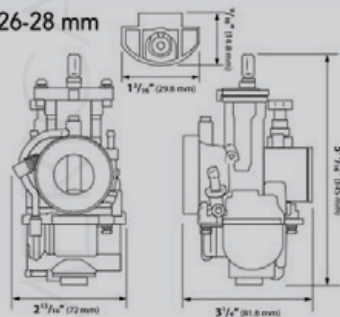
34mm

## KSR carburetor fits 4 strokes

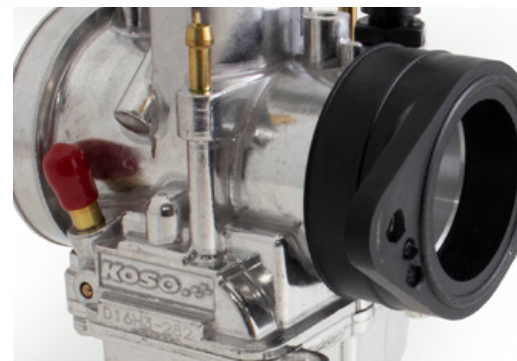
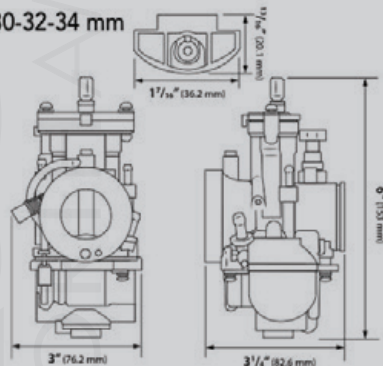
The KSR carburetor features a semi-flat D-style throttle valve that increase the fuel flow for a better throttle reaction. It also reduces the incomplete combustion phenomenon, and therefore improve the combustion efficiency. Available in 4 different sizes and easy to install and adjust, this carburetor will allow you to set-up the ideal air/fuel ratio for a better performance.



24-26-28 mm



30-32-34 mm



## 28mm

---

### Specifications

(R = Range U= Unit)

- Air adjustment screw  
1 1/2
- Slow jet  
#40
- Jet needle setting  
R: 3
- Jet needle  
J
- Main jet  
#100
- Power jet  
#30



## 30mm

---

### Specifications

(R = Range U= Unit)

- Air adjustment screw  
1 1/2
- Slow jet  
#38
- Jet needle setting  
R: 3
- Jet needle  
J
- Main jet  
#122
- Power jet  
#30



## 32mm

---

### Specifications

(R = Range U= Unit)

- Air adjustment screw  
1 1/2
- Slow jet  
#42
- Jet needle setting  
R: 3
- Jet needle  
J
- Main jet  
#122
- Power jet  
#30



## 34mm

---

### Specifications

(R = Range U= Unit)

- Air adjustment screw  
1 1/2
- Slow jet  
#40
- Jet needle setting  
R: 3
- Jet needle  
J
- Main jet  
#122
- Power jet  
#30





**KOSO**   
NORTHAMERICA

Visit our website to view over 300 great



Learn more about motorcycle fuel parts we have.