



SPRAY

Professional Products



MOTOREX SPRAYS

LIQUID TOOLS FROM A CAN

MOTOREX's spray line offers a complete assortment of valuable aids and the product in the can has an answer for practically every application.

MOTOREX Sprays: Comprehensive – efficient – tried and tested.

HI-TECH SPRAYS	4
COLOUR SPRAYS	9
BIKE LINE	10
MOTO LINE	12
CLEAN & CARE / POS MATERIAL	14



APPLICATION MATRIX

main declaration



	lubricates	oiling	grease-based	wax-based	dry lubricant	stops squeaking	adhesive	creeping	sliding	removing rust	anticorrosive	displaces water	water-resistant	water-repellent	salt water resistant	impact resistant	thermal stability	dielectric	metal working	cares and maintains	cleans	welding protection	non combustible	starting aid	impregnating	oil repellent	long-term effect
PTFE OIL SPRAY	✓				✓	✓	✓			✓	✓	✓					✓									✓	
JOKER 440 SYNTHETIC	✓				✓	✓	✓			✓	✓	✓					✓										
INTACT MX 50	✓				✓	✓	✓			✓	✓	✓															
OIL SPRAY BIO	✓	✓					✓	✓		✓	✓																
SPRAY 2000	✓						✓			✓	✓	✓			✓	✓											
GREASE SPRAY	✓		✓				✓			✓	✓	✓			✓												
COPPER SPRAY			✓				✓			✓	✓	✓			✓		✓										
SILICONE SPRAY														✓		✓	✓		✓								
ANTIRUST SPRAY	✓							✓		✓	✓	✓															
SPRAY WITH PTFE					✓		✓		✓			✓					✓										
POWER BRAKE CLEAN																					✓						
POWER CLEAN																	✓				✓						
TOOL GUARD				✓							✓	✓															
GARDEN TOOL CARE	✓										✓	✓										✓					
SPRAY 466				✓			✓				✓	✓	✓	✓	✓												
CHAINLUBE PROF.	✓						✓	✓			✓					✓											
CARBURETOR CLEAN																						✓					
MOTOR START																								✓			
ACCU PROTECT			✓								✓																
EASY CUT PUMPSPRAY	✓										✓								✓								
PROWELD SPRAY																						✓	✓				
GUN CARE SPRAY	✓										✓	✓									✓						
PROTEX SPRAY														✓											✓	✓	

HI-TECH SPRAYS



PTFE OIL SPRAY

Spray: 500ml

High Performance Lubricant

The fully synthetic PTFE OIL SPRAY combines the characteristics of an oily lubricant with those of a dry PTFE-based lubricant. The micronised PTFE particles offer outstanding emergency running properties. Low coefficient of friction, undermines and repels water.



JOKER 440 SYNTHETIC

Spray: 500ml

Universal Spray

Essential for industry, trade, home use and leisure activities. Lubricates all moving parts, stops squeaking, passes through water, protects against corrosion, has a dielectric effect, cleans and cares for metals and plastics. Fully synthetic.



INTACT MX 50

Spray: 200ml, 500ml

Universal Spray

Indispensable for industry, trade, workshops and service stations. Lubricates all moving parts. Perfect for protecting metal surfaces and preserving tools. Stops squeaking. Leaves behind a very effective protective film. Repels and undermines water, thus preventing corrosion.



OIL SPRAY BIO

Spray: 500ml

Oil Spray

The biodegradable oil spray. For industrial, commercial, household and hobby usage, lubricates all moving parts, protects against corrosion, leaves behind a thin colourless film, cares and maintains.



SPRAY 2000

Spray: 500ml

Lubricant adhesive

Fully-synthetic, high-pressure-resistant lubricant with long-term effect for universal application. Penetrates rapidly and protects from corrosion. Thermally stable from -30 °C (86 °F) to +200 °C (+392 °F). Adhesive, water-resistant, silicone-free, pressure and impact resistant, colourless.



GREASE SPRAY

Spray: 500ml

Grease Spray

Viscous grease spray with good adhesion, as an alternative to brushing application. Resistant to water and saline solution. Good protection against corrosion and wear.



COPPER SPRAY

Spray: 300ml

Copper Spray

A special lubricant to prevent mechanical parts exposed to high temperatures such as exhaust manifold bolts, spark plugs, brake pads and heat exchangers from seizing as a result of heat. Silencing properties, stable in respect of oxidation, protection against corrosion, good adhesion, resistant to salt water, extremely good thermal stability, suitable for use between -40 °C/104 °F and +1200 °C/+2192 °F.



SILICONE SPRAY

Spray: 500ml

Silicone Oil

Lubricates, cares for and protects rubber, plastic and all metal parts. Plastic components are given a high gloss; rubber items receive care and protection. Thermal stability from -50 °C (122 °F) to +200 °C (+392 °F). Antistatic, water-repellent, guards against oxidation.



ANTIRUST SPRAY

Spray: 500ml

Screw releasing

Rust remover and screw releasing agent with outstanding penetration. Releases metal parts that are seized with rust. Protects against corrosion and keeps out moisture. Removes rust, repels water, lubricates.



SPRAY WITH PTFE

Spray: 200ml

Dry Lubricant

SPRAY WITH PTFE is a dry lubricant, suitable as an anti-seize and release agent, which does not leave behind any oily marks. The extremely thin PTFE layer with a particle size of 5 µm prevents parts sticking to moulds and stops mounted parts becoming seized on machine tools. Almost unlimited chemical resistance and suitable for use over a very wide range of temperatures (+265 °C/+509 °F). Antistatic.



POWER BRAKE CLEAN

Spray: 750ml

Brake cleaner

Cleans and degreases all brake and clutch components. Prevents whirling-up of wear residues from linings. Removes oil, grease, brake fluid, tar, bitumen etc. Also suited for cleaning machines, electric motors and precision instruments.



POWER CLEAN

Spray: 500ml

Cleaner

Degreasing and cleaning product that removes even the most stubborn dirt. Completely and reliably dissolves oil, grease, tar etc. Cleaner for ignition devices, battery contacts, clamps, electrical contacts. Does not harm rubber, plastic and paint.



TOOL GUARD

Spray: 500ml

Protection Spray

Thin protective film that is an excellent preservative for tools, equipment, machines and antiques. Undermines water and provides invisible, dry and non-slip protection against moisture and hand perspiration. Due to the minimal film thickness of <math>< 0.4 \mu\text{m}</math> it does not have a negative effect on the geometrical accuracy of the machine. Protection is ideal for internal bearings. No long-term protection or protection for external bearings.



GARDEN TOOL CARE

Spray: 250ml

Maintenance spray for garden tools

Pump spray. Cleans, lubricates, conserves. For blades, metal parts and articulated joints on all kinds of garden tools.



SPRAY 466

Spray: 500 ml

Corrosion protection with long-term effect

For outdoor and indoor storage of semi-finished and finished products, ocean transport, winter maintenance vehicles, construction and agricultural machines, as underbody protection and cavity preservation in the automotive industry. Forms a resistant, touch-proof, waxy protective film against external influences after a short drying period. Extremely salt-water resistant.



CHAINLUBE PROFESSIONAL

Spray: 500ml

Chain Lubricant

Fully synthetic chain lubricant for use in industry, construction, transport and agriculture. Specially designed for the loads of chains used in industry. Outstanding lubricating properties, penetrates deeply and is water and dirt-repellent.



CARBURETOR CLEAN

Spray: 500ml

Carburetor cleaner

Carburetor cleans air passages, intake valves, venturi tubes, seats of regulating screws and carburetor casing. Suited for all carburetor types. Tested with catalytic converters.



MOTOR START

Spray: 500ml

Starting aid

For petrol and diesel engines. Contains a friction-reducing lubricating component.



ACCU PROTECT

Spray: 200ml

Battery protectant

Protects battery contacts, battery terminals, electrical connectors and starter motor cables. Prevents corrosion and oxidation.



EASY CUT PUMPSPRAY

Spray: 250ml

Drilling and cutting oil



Drilling and cutting oil spray for high-alloy steel grades, non-ferrous metals and aluminium. For application during drilling, thread cutting, sawing, turning, milling and punching. Increases machining speed. Prevents friction wear. Prolongs service life of tools. Optimised cooling and lubricating properties. Low evaporation. High pressure absorption capacity. Not mixable with water. Suitable for dosed spray application.

PROWELD SPRAY

Spray: 500ml

Welding protection



Spray, free from silicones and solvents, incombustible. Effectively prevents adhesion of welding splashes, protects welded material and units from corrosion, leaves no ash residues and is easily washable with water.

GUN CARE SPRAY

Spray: 300ml

Gun maintenance



The best product for all firearms. Cleans, lubricates and gives lasting protection to all metal parts. Removes powder residues and protects from rust. Displaces moisture and prevents corrosion due to hand perspiration.

SPRAY MIX

Trial set

Try out selected hi-tech sprays and see for yourself the benefits of our little helpers in a can.

- Contents:
- 2x POWER BRAKE CLEAN
 - 2 x INTACT MX 50
 - 2 x SILICONE SPRAY
 - 2 x ANTIRUST SPRAY
 - 1 x SPRAY 2000
 - 1 x GREASE SPRAY
 - 1 x COPPER SPRAY
 - 1 x ACCU PROTECT



COLOUR SPRAYS



BLACK COLOUR SPRAY

Spray: 500ml

Colour Spray

Mat black plastic varnish paint for motor vehicles, machines and equipment. Temperature-resistant up to +400 °C / +752 °F. Weather-proof and scratch-resistant. For metal, plastic, wood, glass and paper. Not suitable for textiles and polystyrene.



SILVER COLOUR SPRAY

Spray: 500ml

Colour Spray

Silver plastic varnish paint for motor vehicles, machines and equipment. Temperature-resistant up to +400 °C / +752 °F. Weatherproof and scratch-resistant. For metal, plastic, wood, glass and paper. Not suitable for textiles and polystyrene.



ZINC COLOUR SPRAY

Spray: 500ml

Corrosion protection

Highly effective corrosion protection for all bare metal parts. Good adhesion and water resistance, long-lasting action. Fast-drying, can be painted over.





Photo: Ghost

BIKE LINE



EASY CLEAN

Spray: 500ml

Biodegradable chain degreaser

Highly active cleaner for all drive train components, especially effective on oily and greasy dirt. MOTOREX EASY CLEAN penetrates even the smallest gaps, dries without leaving a residue and does not damage rubber, plastics and metals.

BIKE SHINE

Spray: 300ml



Care and protection spray

Freshens colors and gives a high gloss. MOTOREX BIKE SHINE protects, preserves and is water-repellent (beading effect). Its anti-static properties repel dust, making it ideal for conserving bicycles that are infrequently used for showrooms. Ideal for use after cleaning.

DRY POWER

Spray: 56ml, 300ml



Chain lubricant for use in dry conditions

Biodegradable, fully synthetic oil wax-based lubricant. The MOTOREX DRY POWER penetrates faster and forms a homogeneous surface that protects the chain against dirt and dust. This lubricant provides enhanced lubrication combined with outstanding protection against corrosion and wear and reduces abrasion. Ideal for lubrication in dry, dusty conditions.

WET PROTECT

Spray: 56ml, 300ml



Chain lubricant for use in damp conditions

Biodegradable, fully synthetic lubricant. The MOTOREX WET PROTECT contains additives that allow it to penetrate quickly and deeply. Provides optimum lubrication and outstanding protection against corrosion. Specially developed for riding conditions where the lubricant has to adhere to the chain for extended periods. The lubricant is highly water repellent, making it ideal for damp and muddy conditions.

CITY LUBE

Spray: 56ml, 300ml



Chain lubricant for every conditions

Universal chain lubricant, especially designed for the demands of daily use. Protects the chain and derailleur against corrosion and reduces wear. Friction and chain noises are effectively reduced. Developed for continuous use due to the long lasting effect and also perfect to use for e-bikes and pedelecs.

MOTO LINE



CHAIN CLEAN DEGREASER

Spray: 500ml

Extremely effective cleaner for all drive chains. Effectively removes strongly adhering residues. Excellent basis for optimum chain care. X-ring and O-ring tested.



CHAIN LUBE RACING

Spray: 56ml, 500ml

Fully synthetic white, PTFE strengthened racing chain lubricant for all motorcycle chains. Reduces wear. Outstanding resistance to centrifugal force, water and extreme temperatures. Also available in refillable 56ml minican.



CHAIN LUBE ROAD STRONG

Spray: 56ml, 500ml

Fully synthetic, wear-reducing white special lubricant with good adhesion for all motorcycle chains, particularly O-ring types. High resistance to centrifugal force, pressure and water. Also available in refillable 56ml minican.



CHAIN LUBE OFF ROAD

Spray: 56ml, 500ml

Fully synthetic, wear-reducing chain and Bowden cable lubricant. O-ring tested. Especially suited for motocross, enduro and off-road use. Resists centrifugal force and high pressures, waterproof. Also available in refillable 56ml minican.



AIR FILTER OIL

Spray: 750 ml

Specially developed for synthetic filter elements. Motocross tested. Prevents penetration of sand, dust and water. Guarantees optimum air permeability. Excellent adhesion.



©Photo: Frank Witzel

Tom Lüthi # 12 • Team Derendinger Racing Interwetten

MOTO PROTECT

Spray: 500ml



Maintenance and protective spray to preserve if not used for a long time. For painted surfaces as well as for chromium and all metal parts. Excellent corrosion protection thanks to a slight oil film. Protects against dust and dirt. Ideal for a everlasting winter protection.

HELMET CARE

Spray: 200ml



Cleaning foam for care of helmet inner padding and shell. Cleans, deodorises and cares. Quickly and effectively removes dirt. Freshens up colours. Does not harm surfaces. Can also be used for removable inner padding. Gives the helmet a pleasant, fresh smell.



CLEAN & CARE

INTERIOR CLEAN

Spray: 500ml



Interior Cleaner

Cleaner for car interiors with odour absorber. Cleans all interior materials, suitable for textiles, upholstery, carpeting and leather. Effectively removes and keeps away unpleasant odours.

Active foam Technology

Active foam with long term effects.



PROTEX SPRAY

Spray: 500ml



Impregnation

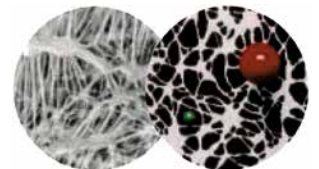
Textile and leather waterproofing. Highly effective and long-lasting protection against moisture and oil. Suitable for leather, textiles and microfibres (e.g. GORE-TEX®), allows the fabric to breathe naturally. Ideal for shoes, skiwear, protective gear for motorcyclists and bikers, convertible hoods and other sports and leisure items.

GORE-TEX® Membrane

Water is not permeable, water vapour escapes without problem. The PROTEX-Spray doesn't affect the GORE-TEX® Membrane!

■ Water vapour
 ■ water drops

Membrane
 Microscopic small pores





POS MATERIAL



TABLE DISPLAY

Table display

Empty, made of cardboard.
53x38.5x28 cm.

REFILL SPRAY SET

3 x 56ml

Mini-sprays

The versatile hi-tech sprays from MOTOREX have been developed for daily use in professional applications. If you only need a small quantity, e.g. while out on a job, the REFILL SPRAY SET from MOTOREX allows you to refill an empty mini-spray can with the hi-tech spray you need.

Can be used with the following hi-tech sprays:

- JOKER 440 SYNTHETIC
- INTACT MX 50
- SPRAY 2000
- GREASE SPRAY
- SILICONE SPRAY
- ANTIRUST SPRAY
- SPRAY WITH PTFE
- POWER CLEAN
- TOOL GUARD

