



O

Z

U

2018



Today you can find the O'NEAL US office just a few miles from the old Hopetown track. In the office you can find our dedicated team members still pushing to develop products that continue to allow our riders to go further and ride faster than ever before. Even today on those tracks and trails just outside this great city you will find Jim O'Neal pushing his passions to the limits every chance he gets. It's been 48 years and you can still find O'NEAL products at nearly 7,000 retail locations worldwide.

CONTENTS

HELMETS

05

MEN'S GEAR

25

GLOVES

45

BOOTS

53

PROTECTION

61

YOUTH

69

WOMENS

79



ACCESSORIES

85

MOTO XXX

91

JERSEY PRINTING

103

FOUR ATV/UTV

105

OVERVIEW

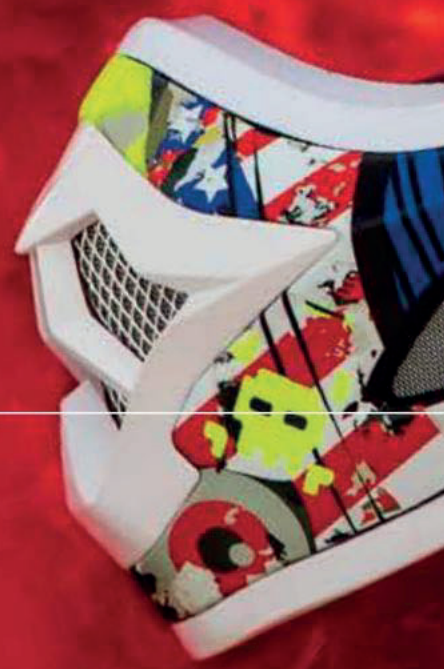
107

CYCLING

111

AZONIC

133



HELMETS





PROTECT THAT NOGGIN'

Protect your greatest asset – While none of us go riding thinking we are going to crash hard, we all know it happens. Having the right helmet is critical. The 2018 O'Neal helmets come in a variety of styles all of which exceed DOT, ECE, and AS safety standards. O'Neal helmets are designed using the latest technology allowing your head to stay cool with multiple vents and ultra plush liners. When it comes to head protection, trust the company that's been producing protective apparel for nearly 50 years, Trust O'Neal.



10 SERIES



black/gray/hi-viz

10 SERIES CARBON RACE

Graphic: Color	Part No.	XS	S	M	L	XL	2X
Carbon Race	0624-4**	01	02	03	04	05	06

SIZES: Adult XS-XXL

FEATURES

- Lightweight Carbon Shell construction
- Shell weight 1080g (±50g)
- Adjustable visor design
- Maximum airflow throughout the helmet, delivered by oversized vents and EPS channels
- Coolmax® liner - Ultra-plush, removable/washable padded liner keeps you cool and dry by wicking away sweat
- Rubber roost nose guard
- Durable multi-colored, clear-coated graphics
- Meets standards: DOT, ECE 22-05, AS/NZS and ACU
- Side goggle traction pad keeps goggle strap securely in place
- High air intake mouth vent with screen lets air in while keeping debris out
- Replacement liners / cheek pads and visors available



flow: black/gray/hi-viz



flow true: black/white



flow true: black/red



flat white



10 SERIES



10 SERIES FLOW

Graphic: Color	Part No.	XS	S	M	L	XL	2X
FLOW: Blk/Gray/Hi-Viz	0624-3**	11	12	13	14	15	16
Flat White	0624-6**	01	02	03	04	05	06
FLOW TRUE: Black/White	0624-5**	01	02	03	04	05	06
FLOW TRUE: Black/Red	0624-5**	21	22	23	24	25	26

SIZES: Adult XS-XXL

FEATURES

- Lightweight fiberglass construction
- Shell weight (± 50 g): 1150 g (size M)
- Adjustable visor design
- Maximum airflow throughout the helmet, delivered by oversized vents and EPS channels
- Coolmax® liner - Ultra-plush, removable/washable padded liner keeps you cool and dry by wicking away sweat
- Rubber roost nose guard
- Removable mouthpiece for easy cleaning
- Durable multi-colored, clear-coated graphics
- Meets standards: DOT, ECE 22-05, AS/NZS and ACU
- Side goggle traction pad keeps goggle strap securely in place
- High air intake mouth vent with screen lets air in while keeping debris out
- Replacement liners / cheek pads and visors available



5 SERIES BLOCKER

Graphic: Color	Part No.	XS	S	M	L	XL	2X
Blocker: Red/Blue	0618-0**	61	62	63	64	65	66
Blocker: Black/Teal	0618-0**	71	72	73	74	75	76
Blocker: White/Gray/Red	0618-0**	81	82	83	84	85	86

SIZES: Adult XS-XXL

FEATURES

- Polycarbonate/ABS shell construction
- Shell weight (size large): 1380grams (±50)
- Coolmax® liner - Ultra-plush, removable/washable padded liner keeps you cool and dry by wicking away sweat
- Adjustable visor design
- Multiple air vents help keep you cool and dry
- Durable multi-colored clear coated graphics
- Replacement parts available
- Meets DOT, ECE 22-05 and AS/NZS safety standards



5 SERIES

white/gray/red



red/blue



black/teal





wingman



warhawk

5 SERIES HELMETS

Graphic: Color	Part No.	XS	S	M	L	XL	2X
Warhawk	0618-2**	81	82	83	84	85	86
Wingman	0618W-0**	11	12	13	14	15	16

SIZES: Adult XS-XXL

FEATURES

- Polycarbonate/ABS shell construction
- Shell weight (size large): 1380grams (±50)
- Coolmax® liner - Ultra-plush, removable/washable padded liner keeps you cool and dry by wicking away sweat
- Adjustable visor design
- Multiple air vents help keep you cool and dry
- Durable multi-colored clear coated graphics
- Replacement parts available
- Meets DOT, ECE 22-05 and AS/NZS safety standards

5 SERIES



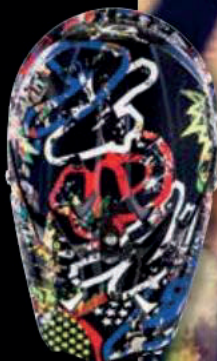





attack



rancid: gloss



rancid: flat



flat black



flat white



3 SERIES HELMETS

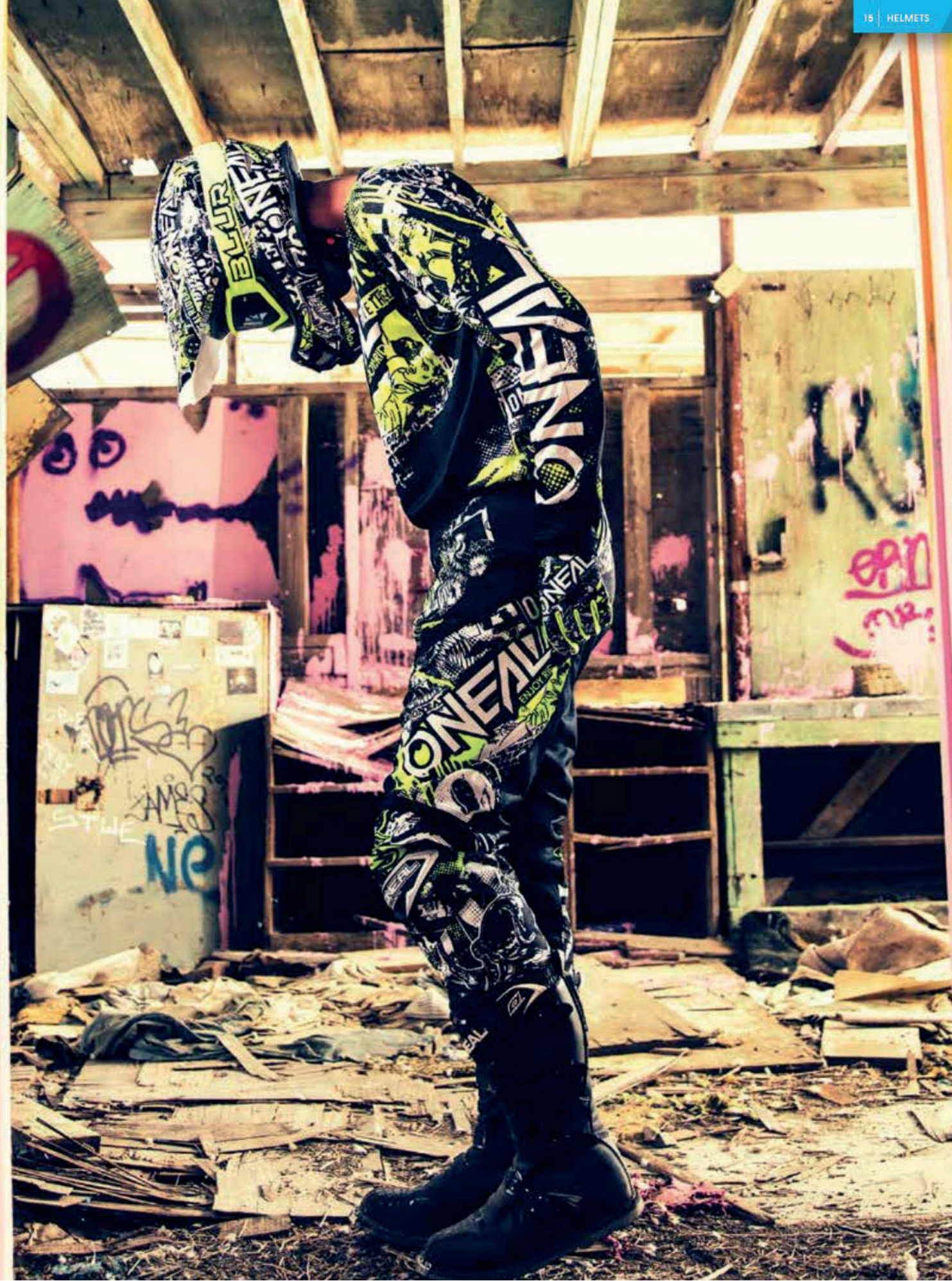
Graphic: Color	Part No.	XS	S	M	L	XL	2X
Flat White	0623-0**	51	52	53	54	55	56
Flat Black	0623-0**	61	62	63	64	65	66
Attack	0623-1**	11	12	13	14	15	16
Rancid: Flat Black	0623-1**	21	22	23	24	25	26
Rancid: Gloss White	0623S-1**	21	22	23	24	25	26


SIZES: Adult XS-XXL

FEATURES


- Shell is constructed with durable Polycarbonate
- Shell weight (size large): 1340grams (± 50)
- Ultra-plush, removable/washable padded liner keeps you cool and dry by wicking away sweat
- Adjustable visor design
- Intake and exhaust vents for ventilation and cooling
- Durable multi-colored clear coated graphics
- Replacement parts available
- Meets DOT, ECE 22-05 and AS/NZS safety standards

3 SERIES





blue/yellow



black/gray

3 SERIES FREERIDER

Graphic: Color	Part No.	XS	S	M	L	XL	2X
Blue/Yellow	0623-1**	51	52	53	54	55	56
Black/Gray	0623-1**	61	62	63	64	65	66

SIZES: Adult XS-XXL

FEATURES

- Shell is constructed with durable Polycarbonate
- Shell weight (size large): 1340grams (± 50)
- Ultra-plush, removable/washable padded liner keeps you cool and dry by wicking away sweat
- Adjustable visor design
- Intake and exhaust vents for ventilation and cooling
- Durable multi-colored clear coated graphics
- Replacement parts available
- Meets DOT, ECE 22-05 and AS/NZS safety standards

3 SERIES



2 SERIES SPYDE

Graphic: Color	Part No.	XS	S	M	L	XL	2X
SPYDE: Black/Hi-Viz	0200-2**	11	12	13	14	15	16
SPYDE: Blue/Red	0200-2**	31	32	33	34	35	36
SPYDE: Orange/White	0200-2**	41	42	43	44	45	46
SPYDE: Black/Red/Hi-Viz	0200-2**	51	52	53	54	55	56

SIZES: Adult XS-XXL

FEATURES

- Shell is constructed with ABS
- Shell weight (size L): 1450grams (±50)
- Ultra-plush removable/washable padded liner
- Multiple air vents ventilation and cooling
- Rubber roost nose guard
- Height adjustable visor
- Double-D release chin strap
- Durable multi-colored clear coated graphics
- Meets standards: DOT, ECE 22-05



2 SERIES



black/red/hi-viz



black/hi-viz



blue/red



orange/white





pbx



torment



MOTO XXX HELMETS

Graphic: Color	Part No.	XS	S	M	L	XL	2X
PBX	0622-4**	01	02	03	04	05	06
Torment	0622-5**	01	02	03	04	05	06

SIZES: Adult XS-XXL

FEATURES

- Lightweight poly-injected construction
- Shell weight 1400 grams ± 50 (Size L)
- Ultra-plush, removable & washable comfort liner
- Full shell venting for improved aerodynamics and overall cooling
- State of the art designed aerodynamic shell and visor
- Side goggle traction pad keeps goggle strap securely in place
- Meets or exceeds DOT & ECE 22-05 safety standards
- Replacement liners, cheek pads and visors available

MOTOXXX





SIERRA II HELMETS

Graphic: Color	Part No.	XS	S	M	L	XL	2X
Flat: Black	0817-5**	01	02	03	04	05	06
Flat: White	0817-5**	11	12	13	14	15	16
Slingshot: Black/Gray	0817-1**	01	02	03	04	05	06

SIZES: Adult XS-XXL

FEATURES

- Shell in constructed with ABS
- Weight: 1590g (± 50g)
- Moisture wicking, removable/washable air channeled comfort liner
- Vent holes for optimal ventilation
- Integrated face shield
- Height adjustable helmet shield
- Padded Chin Strap with Double-D safety lock
- Meets DOT and ECE 22.05 safety standards
- Designed for Street, Enduro and Adventure Bikes
- Replacement parts available

SIERRA II

flat black



flat white



slingshot





MENS GEAR

▶ DEAN WILSON
FACTORY ROCKSTAR HUSQVARNA

SECOND SKIN

It's the layer of protection that wraps you like a 2nd skin, yet it needs to be comfortable enough, breathable enough, and cut just right so you hardly feel it at all. Making the finest in protective apparel is what we have done for over four and a half decades. Ride in O'NEAL and you get the best of all worlds; perfect comfort, flexibility and feel, all while providing protection when you need it most.

HARDWEAR



PRO-LITE

|→| LIGHTWEIGHT PERFORMANCE FABRIC



|→| EXTENDED TAIL WITH COOLING MESH



|→| LEATHER KNEE PANELS



|→| OUR LIGHTEST HARDWEAR PANT EVER



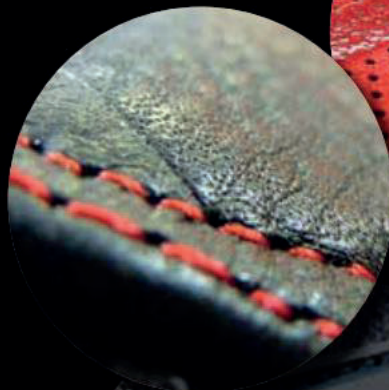
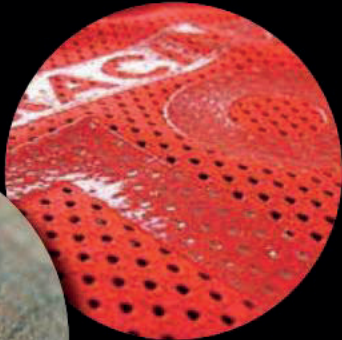
|→| INTAKE VENTS & 100% VENTED MESH LINER



|→| FULLY ADJUSTABLE BELT SYSTEM

RACING TECHNOLOGY

This is where it all comes together. With 48 years of racing technology and development, the Hardwear line encompasses all the benefits and features known to man and then some! The Hardwear line has received critical acclaim from the world's harshest test labs and editorial staff and is proven to be the toughest protective apparel on the planet!





HARDWEAR



red/hi-viz



blue/hi-viz



blue/yellow



orange/white



black/white

HARDWEAR FLOW TRUE JERSEY

Graphic: Color	Part No.	S	M	L	XL	2X
FLOW TRUE: Orange/White	0037-2**	12	13	14	15	16
FLOW TRUE: Blue/Yellow	0037-2**	02	03	04	05	06
FLOW TRUE: Red/Hi-Viz	0037-2**	32	33	34	35	36
FLOW TRUE: Blue/Hi-Viz	0037-2**	22	23	24	25	26

SIZES: Adult: Jersey S-XXL

FEATURES – JERSEY

- Our most advanced jersey ever, featuring the All New 'Pro-Lite' Performance Fabric with 4-way stretch
- The lightest jersey in our history at only 6 oz (size L) is 35% lighter than our Element Jersey
- Closed cell vented panels under the arms, wrists, and back of the neck
- Sublimated no fade graphic
- High quality moisture wicking materials
- Extended tail with cooling mesh
- Silicone print on tail to keep your jersey tucked in
- Vented and Tagless neck design
- Micro cuff decreases restriction
- 100% vented jersey
- 1 Flow Jag pant matches 4 Flow Jag jersey colorways. Buy one or buy them all and have 4 different looks for a fraction of the price!

HARDWEAR FLOW TRUE PANT

Graphic: Color	Part No.	28	30	32	34	36	38	40
FLOW TRUE: Black/White	0139-2**	28	30	32	34	36	38	40

SIZES: Pant 28-40

FEATURES – PANT

- Reduced weight – our lightest Hardwear pant!
- 360 degree adjustable belt keeps pants in place
- Extra long leather heat shield
- Wide accordion knees, sized for knee braces
- Seat padding for extra comfort
- Triple stitched in critical areas for durability
- Lightweight protective rubber patches
- Stretch spandex panels
- Ergonomic pre-bent and padded knee area
- Heavy duty but lightweight denier fabrics
- 1 Flow Jag pant matches 4 Flow Jag jersey colorways. Buy one or buy them all and have 4 different looks for a fraction of the price!

MAYHEM LITE

STREAMLINED & LIGHTWEIGHT

Built to be bold while remaining lightweight and breathable, the Mayhem line has been streamlined over the years. Working with our sponsored athletes, we set out to develop the Mayhem-Lite line. Focusing on essential features such as the dual waist closure and brace accommodating knees, we developed a pant in a class of its own! Whether you want to stand out from the crowd in the Crank graphic or choose the race inspired Blocker kit, the Mayhem line will stand up to the harshest of conditions, moto after moto.







white/gray/red



black/gray/teal



black/hi-viz

MAYHEM-LITE JERSEY

Graphic: Color	Part No.	S	M	L	XL	2X
BLOCKER: Black/Hi-Viz	0030-2**	02	03	04	05	06
BLOCKER: White/Gray/Red	0030-2**	12	13	14	15	16
BLOCKER: Black/Gray/Teal	0030-1**	12	13	14	15	16

SIZES: Adult S-XXL

FEATURES – JERSEY

- Streamlined and lightweight design for the serious racer
- Jersey weight 8.5oz (size L)
- Multiple panel construction for an ergonomically correct cut and fit
- Sublimated graphics that won't fade
- Extended tail
- Clear silicone printing on lower back to help keep jersey tucked in



silicone printing

MAYHEM-LITE PANT

Graphic: Color	Part No.	28	30	32	34	36	38	40	42
BLOCKER: Black/Hi-Viz	0130-2**	28	30	32	34	36	38	40	42
BLOCKER: White/Gray/Red	0130-2**	48	50	52	54	56	58	60	62
BLOCKER: Black/Gray/Teal	0130-1**	48	50	52	54	56	58	60	62

SIZES: Adult 28-42

FEATURES – PANT

- Streamlined and lightweight design for the serious racer
- No rubber thigh patches for reduced weight and increased mobility
- Durable denier fabrics with triple stitching in critical areas
- Leather heat shield
- Reinforced and adjustable elastic waist system with hook-and-loop closure for a precise fit
- Double snaps at waist closure, reinforced with hook and loop to stay secure and keep the zipper in its place
- More durable, wear resistant panels on: seat, inside of legs, and knees
- Lighter weight, more breathable panels, positioned away from bike contact points
- Stretch panels in key points on: front, back, and knees for great freedom of movement
- Vented mesh liner
- Ergonomically correct, pre-bent and padded knee area
- Tapered lower leg to prevent bunching in boot



MAYHEM LITE



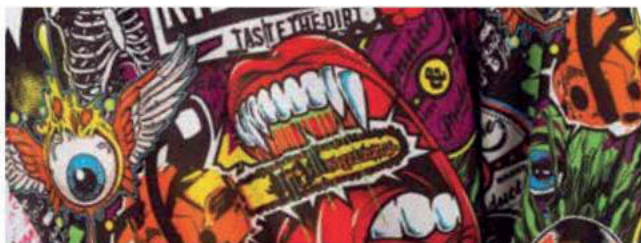
MAYHEM-LITE JERSEY

Graphic: Color	Part No.	S	M	L	XL	2X
SPLIT: Black/Orange	0030-4**	12	13	14	15	16
SPLIT: Blue/Yellow	0030-5**	02	03	04	05	06
CRANK: Multi	0023-1**	02	03	04	05	06

SIZES: Adult S-XXL

FEATURES - JERSEY

- Streamlined and lightweight design for the serious racer
- Jersey weight 8.5oz (size L)
- Multiple panel construction for an ergonomically correct cut and fit
- Sublimated graphics that won't fade
- Extended tail
- Clear silicone printing on lower back to help keep jersey tucked in



crank

MAYHEM-LITE PANT

Graphic: Color	Part No.	28	30	32	34	36	38	40	42
SPLIT: Black/Orange	0130-4**	48	50	52	54	56	58	60	62
SPLIT: Blue/Yellow	0130-5**	28	30	32	34	36	38	40	42
CRANK: Multi	0123-1**	28	30	32	34	36	38	40	42

SIZES: Adult 28-42

FEATURES - PANT

- Streamlined and lightweight design for the serious racer
- No rubber thigh patches for reduced weight and increased mobility
- Durable denier fabrics with triple stitching in critical areas
- Leather heat shield
- Reinforced and adjustable elastic waist system with hook-and-loop closure for a precise fit
- Double snaps at waist closure, reinforced with hook and loop to stay secure and keep the zipper in its place
- More durable, wear resistant panels on: seat, inside of legs, and knees
- Lighter weight, more breathable panels, positioned away from bike contact points
- Stretch panels in key points on: front, back, and knees for great freedom of movement
- Vented mesh liner
- Ergonomically correct, pre-bent and padded knee area
- Tapered lower leg to prevent bunching in boot

MAYHEMLITE



black/orange



blue/yellow



crank

ELEMENT

ELEMENT TECHNOLOGY

Entry-level in price but Premium level in performance! The All New 2018 Element gear is built better than what the other guys offer in their highest priced combos! The Element line brings you race ready graphics, superior materials, and comes in a wide array of colors and sizes to fit the entire family. Made with a roomy, comfy fit, the Element line comes in cuts just right to fit the entire family!







attack

burnout

burnout

afterburner

ELEMENT JERSEY

Graphic: Color	Part No.	S	M	L	XL	2X
BURNOUT: Red/White/Blue	0008-6**	02	03	04	05	06
BURNOUT: Black/Hi-Viz/Orange	0008-9**	12	13	14	15	16
ATTACK: Black/Hi-Viz	0008-8**	02	03	04	05	06
AFTERBURNER: Blue/Red	0028-8**	12	13	14	15	16

SIZES: Adult S-XXL

FEATURES – JERSEY

- Breathable, moisture-wicking material
- Jersey weight 9.3oz (size L)
- Sublimated graphics
- Sewn-in elbow padding
- Extended tail that keeps jersey tucked in
- V-neck collar



attack

ELEMENT PANT

Graphic: Color	Part No.	28	30	32	34	36	38	40	42
BURNOUT: Red/White/Blue	0108-6**	28	30	32	34	36	38	40	42
BURNOUT: Black/Hi-Viz/Orange	0108-9**	58	60	62	64	66	68	70	72
ATTACK: Black/Hi-Viz	0108-8**	28	30	32	34	36	38	40	42
AFTERBURNER: Blue/Red	0128-8**	58	60	62	64	66	68	70	72

SIZES: Adult 28-42

FEATURES – PANT

- Heavy duty but lightweight denier fabrics provide the perfect combination of comfort and protection while riding
- More durable, wear resistant panels on: seat, inside of legs, and knees
- Lighter weight, more breathable panels, positioned away from bike contact points
- Stretch panels in key points on the front, back, and knees of pants for great freedom-of-movement
- Elastic waist with adjustable ratchet closure system for a secure and snug fit
- Protective rubber patches for extra protection when crashing
- Tapered legs with elastic cuffs for a snug fit
- Fully lined for added comfort
- Removable, internal, EVA foam hip protectors



ELEMENT



ELEMENT JERSEY

Graphic: Color	Part No.	S	M	L	XL	2X	3X	4X
Racewear: Black/Gray	0008-1**	02	03	04	05	06	07	08
Racewear: Black/Red	0008-3**	02	03	04	05	06	—	—
Racewear: Blue/Yellow	0008-5**	02	03	04	05	06	—	—

ELEMENT PANT

Graphic: Color	Part No.	28	30	32	34	36	38	40	42	44	46	48	50	52
Racewear: Black/Gray	0108-1**	28	30	32	34	36	38	40	42	44	46	48	50	52
Racewear: Black/Red	0108-3**	28	30	32	34	36	38	40	42	—	—	—	—	—
Racewear: Blue/Yellow	0108-5**	28	30	32	34	36	38	40	42	—	—	—	—	—

FEATURES – JERSEY

- Breathable, moisture-wicking material
- Jersey weight 9.3oz (size L)
- Sublimated graphics
- Sewn-in elbow padding
- Extended tail that keeps jersey tucked in
- V-neck collar

FEATURES – PANT

- Heavy duty but lightweight denier fabrics provide the perfect combination of comfort and protection while riding
- More durable, wear resistant panels on: seat, inside of legs, and knees
- Lighter weight, more breathable panels, positioned away from bike contact points
- Stretch panels in key points on the front, back, and knees of pants for great freedom-of-movement
- Elastic waist with adjustable ratchet closure system for a secure and snug fit
- Protective rubber patches for extra protection when crashing
- Tapered legs with elastic cuffs for a snug fit
- Fully lined for added comfort
- Removable, internal, EVA foam hip protectors



racewear

ELEMENT



black/gray

blue/yellow

black/red



ULTRA-LITE



threat



demolition



ultra-lite 75'

ULTRA-LITE 75' & FREERIDE JERSEY

Graphic: Color	Part No.	S	M	L	XL	2X	3X	4X
ULTRA-LITE: Black/White	0019-5**	02	03	04	05	06	—	—
THREAT: Black/White	0090-3**	02	03	04	05	06	07	08
Demolition: Black/White	0085-0**	12	13	14	15	16	—	—

ULTRA-LITE 75' & APOCALYPSE PANT

Graphic: Color	Part No.	28	30	32	34	36	38	40	42	44	46	48	50
ULTRA-LITE: Black/White	0119-5**	28	30	32	34	36	38	40	—	—	—	—	—
APOCALYPSE: Black	0134-3**	28	30	32	34	36	38	40	42	44	46	48	50

FEATURES – DEMOLITION JERSEYS

- Made of 100% combed heavy weight cotton

FEATURES – THREAT JERSEY

- Versatile graphics match multiple pant designs
- Multi-panel construction
- Breathable, moisture-wicking fabrics
- Relaxed fit for increased comfort and flexibility
- Silicone print on rear of jersey to keep it tucked in

FEATURES – ULTRA-LITE '75 JERSEY

- Inspired by the heritage of the sport
- Sublimated no-fade graphic
- Padded elbow protection
- Vented mesh polyester
- Extended tail, with silicon print, to keep your jersey tucked in
- V-Neck collar
- Tag-less neck label

FEATURES – APOCALYPSE PANT

- Over-the-boot style pants that easily zip-off into shorts
- Adjustable waist system with hook-and-loop closure for a precise fit
- Two zipper pockets for secure storage
- Two jeans style front pockets
- Heavy-duty denier fabrics for added durability
- Strategic stretch panels for comfort and mobility
- Inner leg panel for heat resistance
- Inner leg panel for heat resistance

FEATURES – ULTRA-LITE 75' PANT

- Heavy duty denier fabrics
- 360 degree adjustable belt keeps pants in place
- Lightweight protective patches
- Extra long leather heat shield
- Wide accordion knees sized for knee braces
- Triple stitched in critical areas for durability
- Stretch spandex for added flex



apocalypse



GLOVES

FITS LIKE A GLOVE

It's a rare mix to find hand protection that fits like a glove, feels as natural as your skin, and protects you from all the punishment. After more than forty five years of non-stop product development, you sort of get a feel for things. O'Neal gloves are made to wear better than the others, without sacrificing the gentle feel you need while racing. Let your fingers rejoice!



HARDWEARIRON

BUTCH GLOVE

Item: Color	Part No.	S	M	L	XL	2XL
Carbon Fiber: Black	0468-8**	08	09	10	11	12

SIZES: Adult S-2XL (8-12)

FEATURES

- Polycarbonate, ballistic coverage, on individual knuckles delivers added confidence while maintaining dexterity
- Additional TPR and direct injection patches on top side of fingers and wrist
- Double layer Clarino® palm padding helps reduce blisters and prevent glove stiffening after drying
- Seamless, silicone rolover fingertips, for enhanced lever control
- Long-lasting, durable, and flexible materials for superior comfort
- Adjustable Hook and Loop wrist closure for secure and adjustable fit
- Pre-curved tailoring for the best fit possible, and helps to eliminate arm pump



black

HARDWEAR IRON

Graphic: Color	Part No.	S	M	L	XL	2XL
Black	0400-2**	28	29	30	31	32
Hi-Viz	0400-2**	38	39	40	41	42
Red	0400-2**	08	09	10	11	12
FLOW TRUE: Red/Hi-Viz	0400-2**	58	59	60	61	62

SIZES: Adult S-2XL (8-12)

FEATURES

- High density one piece hidden knuckle protector for maximum impact protection
- Seamless rolover fingertips for added comfort
- Silicone printing on fingertips for improved braking and control
- TPR patches for added protection from branches and debris
- Adjustable wrist with Velcro® closure for a secure fit
- Stretch Lycra® side panels on fingers for added comfort and flexibility
- Ergonomic padding and stitching on palm for increased comfort and dexterity
- Pre-curved tailoring for the best fit possible, and helps to eliminate arm pump
- Bold non-fade graphics



flow true



red

hi-viz

black



wingman



crank



palms



mahalo





two face: orange/white



two face: blue/yellow



two face: black/white



MAYHEM GLOVE

Graphic: Color	Part No.	S	M	L	XL	2XL
TWO FACE: Black/White	0385-4**	38	39	40	41	42
TWO FACE: Orange/White	0385-4**	48	49	50	51	52
TWO FACE: Blue/Yellow	0385-4**	58	59	60	61	62
PALMS: Multi	0385-7**	38	39	40	41	42
MAHALO: Multi	0385-7**	48	49	50	51	52
WINGMAN: Multi	0385-9**	88	89	90	91	92
CRANK: Multi	0385-1**	28	29	30	31	32

SIZES: Adult S-2XL (8-12)

FEATURES

- Silicone printing on palms and finger tips for improved grip and braking control
- Long lasting and flexible material for the perfect fit
- Lightweight design with bold, non-fade graphics
- Seamless rolover fingertips
- Synthetic leather palm with double layer thumb reinforcement
- Hook and loop adjustable wrist closure

MAYHEM GLOVE

MATRIX GLOVE

Graphic: Color	Part No.	8	9	10	11	12
BURNOUT: black/gray	0388-1**	68	69	70	71	72
BURNOUT: black/blue	0388-1**	38	39	40	41	42
BURNOUT: red/black	0388-1**	28	29	30	31	32
WINGMAN: multi	0388-0**	18	19	20	21	22
ATTACK: multi	0388-0**	28	29	30	31	32
AFTERBURNER: multi	0388-3**	88	89	90	91	92

SIZES: Adult S-2XL (8-12)

FEATURES

- Lightweight, uncomplicated design for superb feel and comfort while riding
- Simple design for great freedom-of-movement
- Long lasting and flexible materials for the perfect fit
- Super lightweight design with bold non-fade graphics
- Synthetic leather palm with double layer thumb reinforcement
- Pre-curved tailoring for the best fit possible, and helps to eliminate arm pump



burnout: black/gray



burnout: black/blue



burnout: red/black



wingman



afterburner



attack

MATRIX GLOVE



blue/yellow



black/hi-viz



red

ELEMENT GLOVE

Graphic: Color	Part No.	S	M	L	XL	2XL	3XL	4XL	5XL
RACEWEAR: Black	0392-1**	08	09	10	11	12	13	14	15
RACEWEAR: Blue/Yellow	0392-2**	08	09	10	11	12	—	—	—
RACEWEAR: Red	0392-3**	08	09	10	11	12	—	—	—
RACEWEAR: Black/Hi-Viz	0392-5**	08	09	10	11	12	—	—	—

SIZES: Adult S-2XL (8-12)

FEATURES

- Vented mesh top for increased airflow and cooling
- TPR strips for added protection from branches and debris
- Adjustable wrist with Velcro® closure for a secure fit
- Stretch Lycra® side panels for added comfort and flexibility
- Ergonomic padding and stitching on palm for increased comfort and dexterity
- Pre-curved tailoring for the best fit possible, and helps to eliminate arm pump



black

ELEMENT GLOVE



BOOTS



DOCTOR'S ORDERS

For boot development, we put our best foot forward! Dr. Doug Dubach has been an O'Neal test pilot for over 30 years and a Factory Yamaha test rider for over 25 years. As a 22 time Vet World Champion, nobody knows the importance of boot protection better than the Doctor. All O'Neal boots are thoroughly dirt tested and Doctor approved!



THE
RDX BOOT
V2.2 MX PRO SERIES

RDX 2.2

Color	Part No.	07	08	09	10	11	12	13
Black	0328-1**	17	18	19	20	21	22	23
White	0328-4**	17	18	19	20	21	22	23
Black/Gray	0328-7**	17	18	19	20	21	22	23

FEATURES

- "Full Tilt RDX Pivot System" allows maximum forward and rear motion
- Adjustable shin plate accommodates larger calf sizes in 3 settings for a custom fit
- "Army Rubber" bonded sole with heavy duty adhesive and a hidden reinforced lock stitch
- 4 Aluminum Alloy double pin and "Lock Snap" buckles
- 3 piece super grip heat resistant rubber plates, for constant contact with the bike
- Wrap around Gel and Latex foam interior ankle support
- Extended length steel shank
- Slim toe box height for the perfect shift
- Dual compound rubber/plastic for extra flex at the bottom of the shin plate
- Replacement parts: straps, buckles, rubber sole, foot bed insert, boot upper body and service kit are available



white



black



black/hi-viz



black



white

ELEMENT BOOT

Color	Part No.	7	8	9	10	11	12	13	14	15
Black	0322-1**	07	08	09	10	11	12	13	14	15
White	0322-2**	07	08	09	10	11	12	13	14	15

SIZES: Adult 7-15

AVAILABLE COLORS: Black, White

FEATURES

- Bonded sole
- Durable construction
- Fully adjustable four buckle closure system
- Tough sole with metal shank
- Injection molded plastic shin plate and protection
- Generous heel support and padding for added comfort
- Built in leather heat shield
- Replacement straps and buckles are available



ELEMENT BOOT



black



shorty

RIDER BOOT

Color	Part No.	7	8	9	10	11	12	13	14	15
Black	0325-1**	07	08	09	10	11	12	13	14	15

SIZES: Adult 7-15

AVAILABLE COLORS: Black

FEATURES

- Injection molded plastic plates protect against impacts
- Metal shank insert reinforces the shape of the boot and adds support
- Easy to operate, Snap-Lock adjustable four buckle closure system
- Durable Goodyear welt sole is properly balanced with no unstable rocking
- Metal toe guard to protect the sole against delaminating
- Moderate grip sole is great for track, trail and ATV riders
- Air mesh interior, generous heel support and cushioned insole for extra comfort
- Synthetic leather heat shield to prevent heat damage
- Rear pull tab for extra leverage
- Replacement straps and buckles are available

RIDER SHORTY BOOT

Color	Part No.	7	8	9	10	11	12	13	14	15
Black	0344-0**	07	08	09	10	11	12	13	14	15

SIZES: Adult 7-15

AVAILABLE COLORS: Black

FEATURES

- Injection molded plastic plates protect against impacts
- Metal shank insert reinforces the shape of the boot and adds support
- Easy to operate, Snap-Lock adjustable two buckle closure system
- Durable Goodyear welt sole is properly balanced with no unstable rocking
- Metal toe guard to protect the sole against delaminating
- Moderate grip sole is great for track, trail and ATV riders
- Air mesh interior, generous heel support and cushioned insole for extra comfort
- Replacement straps and buckles are available

RIDER BOOT



eagle



v-twin



hunter



woods camo



island



x-ray



crossbones



native

MX SOCKS

Graphic: Color	Part No.
X-Ray	0356-602
Crossbones	0356-609
Wild	0356-704
V-Twin	0356-720
Woods Camo	0356-718
Islands	0356-731
USA	0356-729
Hunter	0356-733
Wingman	0356-734

Graphic: Color	Part No.
Victory	0356-713
Eagle	0356-721
Bomber	0356-703
Native	0356-735
Corp: Black	0356-736
Corp: Red	0356-737
Corp: Blue	0356-738
Pro XL	0356-311



pro xl

MX SOCKS



wingman



bomber



usa



victory



corp: black



corp: blue



corp: red



SIZES: Adult one-size

FEATURES - PRINT SOCKS

- Knee-high sock height
- Moisture wicking materials
- Thick knit in heel and sole for comfort and shock absorption
- High density materials for durability
- Ribbed arch and ankle for a secure fit
- Composition: 80% Acrylic, 15% Polyamide, 5% Spandex

FEATURES - PRO XL

- Thigh height designed for riders wearing knee braces or knee cups
- Leg constructed of lightweight materials with mesh back for added venting
- Silicone strip to keep your sock in place while riding
- Ribbed arch and ankle for a secure fit



PROTECTION

PROTECT YOURSELF

For 48 years it has been about protection. Protection from debris, roost, rocks, and branches. O'Neal offers the extra layer of protection that apparel just cannot provide. When it comes to safety and function, O'Neal's full line of protection provides sizes, features, and function for every type of rider on every type of terrain.



BAJA JACKET



BAJA JACKET

Item	Part No.	S	M	L	XL	2XL
Baja Jacket	1104-1**	02	03	04	05	06

SIZES: Adult S-XXL

FEATURES

- Windproof, water-repellent shell
- Width adjustment in collar for added comfort
- Protector pockets on shoulder and elbow to insert impact foam
- Waterproof front zipper
- 9 water-resistant pockets
- Vent zipper
- Size adjustable sleeves
- Reflective patches
- Hydration bladder and hose compatible
- Adjustment straps for neck brace
- Document pocket on sleeve
- Removable sleeves



HOLESHOT PROTECTOR

Graphic: Color	Part No.
Black	1285-004

SIZES: Adult M/L

FEATURES

- Neck brace compatible
- Articulated back protector for increased mobility
- Airprene® shoulder padding for comfort
- Integrated waist closure system
- Vented foam padding to keep you cool
- One size fits most



holeshot

PXR PROTECTOR

Graphic: Color	Part No.
White	0734-001
Black	0734-101

SIZES: Adult M/L

FEATURES

- Neck brace compatible
- Articulated back protector for increased mobility
- Integrated chest closure system
- Venting throughout
- Extensive shoulder and bicep protection
- One size fits most



black



white

BODYARMOR

UNDERDOG III ARMOR

Graphic: Color	Part No.	S	M	L	XL	2X
Underdog III	0571-4**	02	03	04	05	06

SIZES: Adult S-XXL

FEATURES

- Constructed from high-impact resistant, injection molded plastic, and IPX® material designed to protect you: shoulders, elbows, forearms, chest, and back
- IPX® back protector extends from the base of the neck to lower back; helping ensure complete protection where you need it most
- 9 areas of adjustment for the perfect fit
- Back protector zips off for easy cleaning
- Extensive mesh venting helps keep you cool while riding
- Adjustable elastic kidney belt with Hook and Loop closure for a secure fit
- Neck brace compatible



underdog III





pro III

PRO III KNEE GUARD

Graphic: Color Part No.

Pro III Knee Guard 0251-201

SIZES: Adult One-Size

FEATURES

- Comfortable knee-shin pad to use under your riding pants
- Perfect for MX, MTB, or BMX (short shins fit inside boots)
- Tough plastic knee cap and shin guard
- Articulated joint between knee and shin provides excellent movement while riding
- Adjustable elastic straps with Hook and Loop closures provide a secure, snug, and comfortable fit



pumpgun

PUMPGUN KNEE GUARD

Graphic: Color Part No.

Pumpgun Knee Guard 0256-206

SIZES: Adult One-Size

FEATURES

- Lightweight and well ventilated knee protection
- Innovative, hinged knee pivot design, moves with you rather than restricting movement
- High impact resistant, injection molded plastic
- The design ensures the protection stays in place while riding and during crashes
- Pre-Formed foam inner is molded to the shape of the knee for added comfort and protection
- The inner knee bolt is counter-sunk to prevent damage to the bike
- All rivets and bolts are covered with padding
- 3 demo-friendly elastic and Velcro straps provide a secure and snug fit
- CE Certified

► **FREDDIE NOREN**
TILUBE/STORMLAKE HONDA





element

ELEMENT KIDNEY BELT

Graphic: Color Part No. M/L XL

Black 0733-1** 00 01

67 | PROTECTION

SIZES: Adult M/L & XL

FEATURES

- Provides lower back support when riding
- Gentle compression helps protect lower abdomen and internal organs
- Gives an extra layer of coverage in the event of a crash
- Ergonomic design provides maximum lumbar support combined with comfort to the sides and back
- Adjusted with 2 external Velcro® closure straps to fit a wide range of sizes

TRAIL SHORT

Color	Part No.	S	M	L	XL	2XL
Black/Lime	1288-0**	02	03	04	05	06

SIZES: Adult S-XXL

FEATURES

- High-density, EVA foam for added protection in the key impact zones of hips, thighs, and coccyx (tail bone)
- Pads are ergonomically designed to be as comfortable and unobtrusive as possible when worn under riding shorts and pants
- Flat double seams, elasticated waist and legs, and Spandex mesh legs provide a great fit for comfortable riding
- Coolmax® chamois inset for added comfort



black/lime



black/lime

TRAIL PANT

Color	Part No.	S	M	L	XL	2XL
Black/Lime	1288-1**	02	03	04	05	06

SIZES: Adult S-XXL

FEATURES

- Comfortable form fitting protector long pants
- High density EVA padding for protection in hip, thigh and tailbone area
- Ergonomically designed pads
- Flat overlock elastic stitched seams
- Crotch insert Coolmax® chamois for additional comfort
- Silicon tape on inner ankle area for stability



YOUTH



START THEM OFF RIGHT

Getting on two wheels and learning how to ride is where it all begins! O'NEAL makes premium protection apparel and equipment strong enough for those just starting to ride and tough enough for those kids making their way to the track. Don't let the size fool you, even the smallest O'NEAL pants, jerseys, gloves, helmets and boots are built with the same premium materials and specifications as the O'NEAL gear that the big pros wear. So take the kids out, have fun and Enjoy the Ride knowing the little ones are off to the right start!

3 SERIES HELMET

Graphic: Color	Part No.	S	M	L	XL
Flat Black	0623-0**	72	73	74	75
Attack	0623-0**	92	93	94	95

FEATURES

- Shell is constructed with durable Polycarbonate
- Shell weight (size large): 1100grams (±50)
- Ultra-plush removable/washable padded liner keeps you cool and dry by wicking away sweat
- Adjustable visor design
- Intake and exhaust vents for ventilation and cooling
- Durable multi-colored clear coated graphics
- Replacement parts available
- Meets DOT, ECE 22-05 and AS/NZS safety standards

RIDER BOOT

Item: Color	Part No.	1	2	3	4	5	6
Youth: Black	0325-1**	01	02	03	04	05	06
Youth: Black/Pink	0325-7**	01	02	03	04	—	—

Item: Color	Part No.	K10	K11	K12	K13
PeeWee: Black	0325-1**	97	98	99	00
PeeWee: Black/Pink	0325-7**	—	—	99	—

FEATURES

- Injection molded plastic plates protect against impacts
- Metal shank insert reinforces the shape of the boot and adds support
- Easy to operate, Snap-Lock adjustable four buckle closure system
- Durable Goodyear welt sole is properly balanced with no unstable rocking
- Metal toe guard to protect the sole against delaminating
- Moderate grip sole is great for track, trail and ATV riders
- Air mesh interior, generous heel support and cushioned insole for extra comfort
- Synthetic leather heat shield to prevent heat damage
- Rear pull tab for extra leverage
- Replacement straps and buckles are available





flat black

attack



black/black



black/pink

DEMOLITION JERSEY

Item	Part No.	S	M	L	XL
Demolition Jersey	0085-0**	32	33	34	35

FEATURES:

- Made of 100% combed heavy weight cotton



black/hi-viz



racewear: blk/red



racewear: blu/yel



racewear: blk/gry



racewear: blk/pnk



afterburner

ELEMENT JERSEY

Graphic: Color	Part No.	XS	S	M	L	XL
RACEWEAR: Black/Gray	0006-1**	01	02	03	04	05
RACEWEAR: Black/Red	0006-3**	—	02	03	04	05
RACEWEAR: Blue/Yellow	0006-5**	—	02	03	04	05
RACEWEAR: Black/Pink	0006-7**	—	02	03	04	05
AFTERBURNER: Red/Blue	0029-8**	—	12	13	14	15

SIZES: Adult S-XXL

FEATURES - JERSEY

- Breathable, moisture-wicking material
- Jersey weight 9.3oz (size L)
- Sublimated graphics
- Sewn-in elbow padding
- Extended tail that keeps jersey tucked in
- V-neck collar



racewear

ELEMENT PANT

Graphic: Color	Part No.	2/3	4/5	5/6	8/10	12/14	Y28
RACEWEAR: Black/Gray	0108-1**	18	20	22	24	26	27
RACEWEAR: Black/Red	0108-3**	—	—	22	24	26	27
RACEWEAR: Blue/Yellow	0108-5**	—	—	22	24	26	27
RACEWEAR: Black/Pink	0108-7**	—	—	22	24	26	—
AFTERBURNER: Red/Blue	0128-8**	—	—	52	54	56	57

SIZES: Adult 28-42

FEATURES - PANT

- Heavy duty but lightweight denier fabrics provide the perfect combination of comfort and protection while riding
- More durable, wear resistant panels on: seat, inside of legs, and knees
- Lighter weight, more breathable panels, positioned away from bike contact points
- Stretch panels in key points on the front, back, and knees of pants for great freedom-of-movement
- Elastic waist with adjustable ratchet closure system for a secure and snug fit
- Protective rubber patches for extra protection when crashing
- Tapered legs with elastic cuffs for a snug fit
- Fully lined for added comfort
- Removable, internal, EVA foam hip protectors

YOUTH ELEMENT





burnout: red/wht/blu



burnout: blk/hi-viz/org



attack



mayhem: wht/gry/red



mayhem: blk/gry/teal

ELEMENT JERSEY

Graphic: Color	Part No.	XS	S	M	L	XL
BURNOUT: Red/White/Blue	0006-6**	—	02	03	04	05
BURNOUT: Black/Hi-Viz/Orange	0006-9**	—	12	13	14	15
ATTACK: Black/Hi-Viz	0006-8**	—	02	03	04	05

ELEMENT PANT

Graphic: Color	Part No.	2/3	4/5	5/6	8/10	12/14	Y28
BURNOUT: Red/White/Blue	0108-6**	—	—	22	24	26	27
BURNOUT: Black/Hi-Viz/Orange	0108-9**	—	—	52	54	56	57
ATTACK: Black/Hi-Viz	0108-8**	—	—	22	24	26	27

MAYHEM-LITE JERSEY

Graphic: Color	Part No.	S	M	L	XL
BLOCKER: White/Gray/Red	0030-2**	22	23	24	25
BLOCKER: Black/Gray/Teal	0030-1**	22	23	24	25

MAYHEM-LITE PANT

Graphic: Color	Part No.	5/6	8/10	12/14	Y28
BLOCKER: White/Gray/Red	0130-2**	43	44	46	47
BLOCKER: Black/Gray/Teal	0130-1**	43	44	46	47



x-ray



bomber



XOXO

MX SOCKS

Graphic: Color	Part No.
X-Ray	0356-723
Bomber	0356-724
XOXO	0356-722

SIZES: One-size

FEATURES - PRINT SOCKS

- Knee-high sock height
- Moisture wicking materials
- Thick knit in heel and sole for comfort and shock absorption
- High density materials for durability
- Ribbed arch and ankle for a secure fit
- Composition: 80% Acrylic, 15% Polyamide, 5% Spandex



PUMPGUN KNEE GUARD

Graphic: Color

Part No.

Pumpgun Knee Guard

0256-207

SIZES: One-Size

FEATURES

- Lightweight and well ventilated knee protection
- Innovative, hinged knee pivot design, moves with you rather than restricting movement
- High impact resistant, injection molded plastic
- The design ensures the protection stays in place while riding and during crashes
- Pre-Formed foam inner is molded to the shape of the knee for added comfort and protection
- The inner knee bolt is counter-sunk to prevent damage to the bike
- All rivets and bolts are covered with padding
- 3 demo-friendly elastic and Velcro straps provide a secure and snug fit
- CE Certified

pumpgun



YOUTH GLOVES

Graphic: Color

Part No.

XS

S

M

L

XL

MATRIX Attack: Black/Hi-Viz

0388-0**

23

24

25

26

27

MATRIX Burnout: Black/Gray

0388-1**

63

64

65

66

67

ELEMENT: Black

0392-1**

01

03

05

06

07

ELEMENT: Blue/Yellow

0392-2**

01

03

05

06

07

ELEMENT: Red

0392-3**

01

03

05

06

07

ELEMENT: Black/Hi-Viz

0392-5**

01

03

05

06

07

ELEMENT: Black/Pink

0392-7**

01

03

05

—

—

SIZES: Youth XS-XL (1/2 - 7)

FEATURES - MATRIX

- Lightweight, uncomplicated design for superb feel and comfort while riding
- Simple design for great freedom-of-movement
- Long lasting and flexible materials for the perfect fit
- Super lightweight design with bold non-fade graphics
- Synthetic leather palm with double layer thumb reinforcement
- Pre-curved tailoring for the best fit possible, and helps to eliminate arm pump

FEATURES - ELEMENT

- Vented mesh top for increased airflow and cooling
- TPR strips for added protection from branches and debris
- Adjustable wrist with Velcro® closure for a secure fit
- Stretch Lycra® side panels for added comfort and flexibility
- Ergonomic padding and stitching on palm for increased comfort and dexterity
- Pre-curved tailoring for the best fit possible, and helps to eliminate arm pump



blue/yellow



black



black/pink



red



burnout



attack

YOUTH GLOVES

ELEMENT KIDNEY BELT

Type	Part No.
Element Kidney Belt	0733-102

SIZES: Youth One-Size

FEATURES

- Provides lower back support when riding
- Gentle compression helps protect lower abdomen and internal organs
- Gives an extra layer of coverage in the event of a crash
- Ergonomic design provides maximum lumbar support combined with comfort to the sides and back
- Adjusted with 2 external Velcro® closures straps to fit a wide range of sizes



element

77 | YOUTH

UNDERDOG II BODY ARMOR

Type	Part No.	S	M	L
Underdog II	0571-3**	02	03	04

SIZES: Youth S-L

FEATURES

- Constructed from high impact injection molded plastic to protect the shoulders, elbows, forearms, chest and back
- Articulating back protection covers spine, without inhibiting movement
- Removeable back, elbow and forearms
- Adjustable elastic kidney belt with Velcro® closure for a secure fit
- Extensive mesh and padded foam venting to help keep cool
- 9 areas of adjustment for the perfect fit



underdog II



PEEWEE PROTECTION

Type	Part No.	S/M	L/XL
Chest Protector	0251-3**	00	01
Knee Guard	0251-312	—	—
Elbow Guard	0251-3**	10	11

SIZES: PeeWee - S/M & L/XL,
Knee Guard - one-size

FEATURES - CHEST PROTECTOR

- Lightweight flexible and comfortable foam chassis design
- Injected molded plastic shoulder pads
- TPR Chest and Back protection for supreme protection
- Adjustable straps for the perfect fit
- S/M – fits ages 2-5yrs. Approximately 35-40in tall, 28-40lbs
- L/XL – fits ages 5-7yrs. Approximately 40-50in tall, 38-55lbs

FEATURES - KNEE GUARD

- Lightweight flexible and comfortable foam chassis design
- Injected molded plastic shoulder pads
- Adjustable straps for the perfect fit

FEATURES - ELBOW GUARD

- Lightweight flexible and comfortable foam chassis design
- Injected molded plastic shoulder pads
- Adjustable straps for the perfect fit



chest protector



elbow guard



knee guard



WOMEN'S



JUST THE RIGHT FIT

Cut just right for the female figure, O'NEAL offers a full line of protection for the ladies that want to hit the dirt! O'Neal has been in the front of the pack in product development for female apparel and accessories for decades.



threat



element



demolition



apocalypse

WOMEN'S JERSEY

Graphic: Color	Part No.	S	M	L	XL	2X
Element Racewear: Black/Pink	0008-7**	02	03	04	05	06
Threat: Black/Pink	0090-4**	02	03	04	05	—
Demolition: Black/Pink	0085-0**	22	23	24	25	—

WOMEN'S PANT

Graphic: Color	Part No.	1/2	3/4	5/6	7/8	9/10	11/12	13/14
Element Racewear: Black/Pink	0108-7**	27	28	30	32	34	36	38
Apocalypse: Black	0134-3**	01	03	05	07	09	11	13

FEATURES – ELEMENT/THREAT JERSEY

- Breathable, moisture-wicking material
- Sublimated graphics
- Sewn-in elbow padding
- Extended tail that keeps jersey tucked in (Element Only)
- V-neck collar

FEATURES – DEMOLITION JERSEY

- Made of 100% combed heavy weight cotton

FEATURES – APOCALYPSE PANT

- Over-the-boot style pants that easily zip-off into shorts
- Women's specific fit
- Adjustable waist system with Hook and Loop closure for a precise fit
- Two zipper pockets for secure storage
- Two jeans style front pockets
- Heavy-duty denier fabrics for added durability
- Strategic stretch panels for comfort and mobility
- Inner leg panel for heat resistance
- Hook and Loop closures on ankles for secure fit

FEATURES – ELEMENT PANT

- Heavy-duty but lightweight denier fabrics provide the perfect combination of comfort and protection while riding
- Female specific fit
- More durable, wear resistant panels on seat, inside of legs, and knees
- Stretch panels in key points on the front, back, and knees of pants for great freedom of movement
- Elastic waist with adjustable ratchet closure system for a secure and snug fit
- Protective rubber patches for extra protection
- Tapered legs with elastic cuffs for a snug fit
- Fully lined for added comfort
- Removable, internal, EVA foam hip protectors



ELEMENT GLOVE

Graphic: Color	Part No.	S	M	L	XL	2XL
Racewear: Blk/Pink	0392-7**	06	07	08	09	10

SIZES: Adult SM-XL (6-10)

FEATURES

- Lightweight, uncomplicated design for superb feel and comfort while riding
- Simple design for great freedom-of-movement
- Long lasting and flexible materials for the perfect fit
- Super lightweight design with bold non-fade graphics
- Synthetic leather palm with double layer thumb reinforcement
- Pre-curved tailoring for the best fit possible, and helps to eliminate arm pump
- Slip-on



element glove



rider boot

RIDER BOOT

Graphic: Color	Part No.	5	6	7	8	9	10	11	12
Black/Pink	0325-7**	05	06	07	08	09	10	11	12

FEATURES

- Injection molded plastic plates protect against impacts
- Metal shank insert reinforces the shape of the boot and adds support
- Easy to operate, Snap-Lock adjustable four buckle closure system
- Durable Goodyear welt sole is properly balanced with no unstable rocking
- Metal toe guard to protect the sole against delaminating
- Moderate grip sole is great for track, trail and ATV riders
- Air mesh interior, generous heel support and cushioned insole for extra comfort
- Synthetic leather heat shield to prevent heat damage
- Rear pull tab for extra leverage
- Replacement straps and buckles are available

MX SOCKS

Graphic: Color	Part No.
XOXO	0356-604
Wild	0356-704

SIZES: Adult one-size

FEATURES - PRINT SOCKS

- Knee-high sock height
- Moisture wicking materials
- Thick knit in heel and sole for comfort and shock absorption
- High density materials for durability
- Ribbed arch and ankle for a secure fit
- Composition: 80% Acrylic, 15% Polyamide, 5% Spandex



wild



xoxo

3 SERIES FREERIDER

Color	Part No.	XS	S	M	L	XL	2X
Black/Pink	0623-1**	71	72	73	74	75	76

FEATURES

- Shell is constructed with durable Polycarbonate
- Shell weight (size large): 1340grams (±50)
- Ultra-plush removable/washable padded liner keeps you cool and dry by wicking away sweat
- Adjustable visor design
- Intake and exhaust vents for ventilation and cooling
- Durable multi-colored clear coated graphics
- Replacement parts available
- Meets DOT, ECE 22-05 and AS/NZS safety standards



83 | WOMENS

freerider blk/pnk

► SAYAKA KANESHIRO





ACCESSORIES

ACCESSORIES

It's the little things that make your day on the trail and the track just right! O'NEAL makes a full line of additional accessories that are essentials for every rider. Whether it's the right size gear bag to get all of your apparel and equipment to the track or the Stadium blanket that keeps you comfortable and warm after the last moto. These are the accessories that you soon find are more than just items to bring with you as you head out the door. These are items that soon become must haves every time you ride!

16" black

ONEAL

5" black

ONEAL ENJOYRIDE

5" hi-viz

ONEAL ENJOYRIDE

5" moto xxx

MOTOXXX

TRACK STICKER

Item: Color	Part No.
Track Sticker 16": black	5010-201
Track Sticker 5": black	5010-022
Track Sticker 5": hi-viz	5010-023
Moto XXX Sticker 16": red	5010-024

GEAR BAGS

Item	Part No.
TX-2000	1320-100
TX-8000	1315-200

SIZES: 8000 cubic inches, 2000 cubic inches

FEATURES – TX-8000 GEAR BAG

- Dimensions: 34 in x 15 in x 17 in
- One main compartment, two end boot compartments, and 1 side pocket
- Durable 600D Polyester
- Detachable padded shoulder strap
- Heavy duty zippers and bold graphics

FEATURES – TX-2000 GEAR BAG

- Dimensions: 22 in x 9 in x 11 in
- One main compartment, and 2 side pocket
- Durable 300D Polyester
- Detachable padded shoulder strap
- Heavy duty zippers and bold graphics



tx-8000



tx-2000

GEARBAGS



STADIUM BLANKET

Item	Part No.
Stadium Blanket	1115-004

SIZE: 54" x 78"

FEATURES

- Large, thick fleece stadium blanket that's perfect for a night at the races

MOTO UMBRELLA

Item: Color	Part No.
Moto Umbrella: Attack	3069-102

FEATURES

- Starting gate approved!
- Large 46" diameter when open
- Ergonomic grip
- Storage sleeve
- 37" height





WAFFLE



DIAMOND



D2 WAFFLE



OPEN ENDED



ATV 1/2 WAFFLE



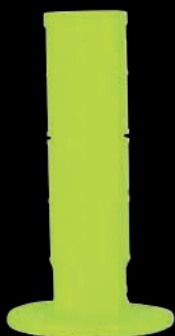
1/2 waffle: blue



1/2 waffle: gray



1/2 waffle: neon grn



1/2 waffle: neon yel



1/2 waffle: neon orange



1/2 waffle: neon pink



1/2 waffle: red



waffle d2: blk/blu



waffle d2: blk/org



waffle d2: blk/red

TYPES: Full Diamond, Half Waffle, D2 Half Waffle, Open-Ended Half Waffle, ATV Half Waffle

FEATURES - HALF WAFFLE

- Built in groove for safety wire
- Medium compound material
- Half waffle pattern
- Closed end
- Sold in pairs
- For use on twist throttles

FEATURES - FULL DIAMOND

- Medium compound material
- Diamond pattern
- Closed end
- Sold in pairs
- For use on twist throttles

FEATURES - HALF WAFFLE D2

- Dual compound material
- Waffle pattern
- Closed end
- Sold in pairs
- For use on twist throttles

FEATURES - HALF WAFFLE ATV

- Smaller diameter flange
- Medium compound material
- Waffle pattern
- Closed end
- Sold in pairs

FEATURES - OPEN ENDED

- Hand guard ready open ended grip design
- Medium compound material
- Waffle pattern
- Sold in pairs
- For use on twist throttles

MOTOGrips

MX GRIPS

Type: Color

Part No.

Waffle: Blue	7160-700
Waffle: Black	7160-701
Waffle: Gray	7160-702
Waffle: Red	7160-703
Waffle: Neon Green	7160-704
Waffle: Neon Pink	7160-705
Waffle: Neon Yellow	7160-706
Waffle: Neon Orange	7160-707
Diamond: Blue	7160-200
Diamond: Black	7160-201
Diamond: Gray	7160-202
Diamond: Red	7160-203
Diamond: Neon Green	7160-204
Diamond: Neon Pink	7160-205
Diamond: Neon Yellow	7160-206
Diamond: Neon Orange	7160-207
D2 Waffle: Black/Blue	7160-800
D2 Waffle: Black/Gray	7160-801
D2 Waffle: Black/Orange	7160-802
D2 Waffle: Black/Red	7160-803
ATV: Black	7160-900
OEN Diamond: Black	7160-901
OEN Waffle: Black	7160-902





MOTO XXX



MOTO XXX

Back in '94 the most unlikely of characters joined together to change our sport and the industry forever! Moto XXX burst onto the scene with a vengeance releasing the Moto XXX videos and launching their own race team to compete in Supercross. Made up of misfits, degenerates and those that have been cast aside, Moto XXX entered the supercross pits for round one in a funky-ass box van with a crazy paint scheme, carrying two riders, who were far too edgy for a corporate sponsor. With music blaring, hot chicks flocking and free promo items flying, the pits became a party scene centered around the new Moto XXX team! One round later the team shocked the world as Brian Deegan won the night's 125 Supercros event launching his bike on a ghost-ride as he crossed over the finish line! Moto XXX went on to be the most infamous privateer team in racing history. Racer X magazine named the team "An American Icon who in fact changed the face of Motocross and freestyle forever!" Moto XXX developed into a complete MX culture. It has captured it's culture exclusively in the Moto XXX line of casual for your daily debauchery.



white vented



black/white



black/hi-viz

ORIGINAL JERSEY

Graphic: Color	Part No.	S	M	L	XL	2X
ORIGINAL: Black/White	0041-1**	02	03	04	05	06
ORIGINAL: Black/Hi-Viz	0041-2**	02	03	04	05	06
ORIGINAL: White Vented	0041-4**	02	03	04	05	06

FEATURES - JERSEY

- Athletic fit
- slim cuffs and collar
- 3" tail to help keep jersey tucked in

FEATURES - JERSEY VENTED

- Athletic fit
- slim cuffs and collar
- 3" tail to help keep jersey tucked in
- Large hole mesh for extensive cooling

ORIGINAL JERSEY





MOTO XXX

PUNK • ROCK • MOTO

THE ORIGINALS CA

EST. MCMXCIV *Guarantee* LOS ANGELES
QUALITY GOODS
MOTO

O'NEAL

O'NEAL



MOTO XXX HELMET

Graphic: Color	Part No.	XS	S	M	L	XL	2X
PBX	0622-4**	01	02	03	04	05	06
Torment	0622-5**	01	02	03	04	05	06

SIZES: Adult XS-XXL

FEATURES

- Lightweight poly-injected construction
- Shell weight 1400 grams \pm 50 (Size L)
- Ultra-plush, removable & washable comfort liner
- Full shell venting for improved aerodynamics and overall cooling
- State of the art designed aerodynamic shell and visor
- Side goggle traction pad keeps goggle strap securely in place
- Meets or exceeds DOT & ECE 22-05 safety standards
- Replacement liners / cheek pads and visors available



torment



pbx





beanie

MOTO XXX HATS

Graphic: Color	Part No.
OG hat	1025-001
Ninety Four	1025-002
International	1025-003
Beanie	1025-004

SIZE: One size fits most

FEATURES - HAT

- Snapback with woven patch detailing

FEATURES - BEANIE

- Acrylic knit with woven patch detailing



ninety four



international



og hat

MOTO XXX WALLET

Item	Part No.
Wallet	1025-200

FEATURES - HAT

- Water-resistente, tear-resistant, slim design wallet mad of Tyvek® material to withstand years of punishment and abuse
- 2 large pockets for cash and receipts
- 2 credit card pockets that can hold multiple cards
- 2 business card pockets

MOTO XXX 5" STICKER

Item	Part No.
Sticker	5010-024

SIZES: 5" PVC Sticker



5": moto xxx



moto xxx wallet



100: hard pack



100: wheelie



100: speed demon



100: gasket



100: stacked



100: wrench



50/50: skully



100: grom



100: xxx tour

MOTO XXX TEES

Style: Graphic	Part No.	S	M	L	XL	2X
100 TEE: Wheelie	1024-3**	22	23	24	25	26
100 TEE: Speed Demon	1024-0**	72	73	74	75	76
100 TEE: Hard Pack	1024-2**	72	73	74	75	76
100 TEE: Gasket	1024-3**	52	53	54	55	56
100 TEE: Grom	1024-3**	62	63	64	65	66
100 TEE: Stacked	1024-4**	12	13	14	15	16
100 TEE: Wrench	1024-4**	22	23	24	25	26
100 TEE: Tour	1024-5**	12	13	14	15	16
50/50 TEE: Skully	1024-3**	92	93	94	95	96

SIZES: Adult XS-XXL

FEATURES - 100 TEES

- 100% Ringspun Cotton
- Tagless neck label design
- Soft touch screen printed graphics

FEATURES - 50/50 TEES

- 50% Ringspun combed Cotton, 50% Polyester
- Tagless neck label design
- Soft touch screen printed graphics

FEATURES - CREW SWEATSHIRT

- Cotton Blend with pull on closure
- 50% cotton 50% polyester
- Pill-resistant air jet yarn
- Set in sleeves
- 1x1 ribbed collar cuffs and waistband with spandex

MOTO XXX TEES

Style: Graphic	Part No.	S	M	L	XL	2X
50/50 TEE: Merica	1024-6**	22	23	24	25	26
50/50 TEE: Service	1024-6**	42	43	44	45	46
50/50 TEE: Dirt Goods	1024-6**	62	63	64	65	66
50/50 TEE: Sudz	1024-6**	72	73	74	75	76
CREW SWEATSHIRT: Dirt Goods	1024-6**	82	83	84	85	86
CREW SWEATSHIRT: Service	1024-6**	92	93	94	95	96



50/50TEES



50/50: dirt goods (front)



50/50: dirt goods (back)



50/50: merica



crew: service (front)



crew: service (back)



50/50: service



crew: dirt goods (front)



crew: dirt goods (back)



50/50: sudz



100: 1994



100: la moto ca



100: premium goods



100: rules



100: london la



100: mxxx



50/50: moto monster (front)



50/50: moto monster (back)



50/50: hellcat

MOTO XXX TEES

Style: Graphic	Part No.	S	M	L	XL	2X
100 TEE: 1994	1024-5**	22	23	24	25	26
100 TEE: LA Moto CA	1024-5**	32	33	34	35	36
100 TEE: Rules	1024-5**	42	43	44	45	46
100 TEE: London LA	1024-5**	52	53	54	55	56
100 TEE: MXXX	1024-5**	62	63	64	66	66
100 TEE: Premium Goods	1024-5**	82	83	84	85	86
50/50 TEE: Moto Monster	1024-6**	12	13	14	15	16
50/50 TEE: Hellcat	1024-6**	52	53	54	55	56



► **FREDDIE NOREN**
TILUBE/STORMLAKE HONDA



JERSEY PRINTING

Our exclusive custom One-Piece Jersey Name & Number lettering and Sponsor logos once only available to Pro Riders, are now available to everyone! Working with our top riders Dean Wilson and Freddie Noren, we have perfected our printing materials to maximize visibility while maintaining a durable print that will go the distance through every moto and every wash! You can now get your jersey lettering and sponsor logos applied to your jersey and done by a professional O'Neal designer to get that factory look! We offer two fonts (Rally & Depot) in either Black or White allowing you, the rider, to truly customize the look of your jersey. Can't decide which color will look best? No problem, you can allow a professional O'Neal Designer to choose which color will look best on your particular jersey.

Want to represent your personal sponsors on the track in style? We are here to help you get that professional look! O'Neal artists have hundreds of major Motocross and Bicycle company logos on file ready for your jersey. If you should need a custom logo (IE Non Moto Company, Local Shop Logo) an O'Neal Designer can convert your logo into a printable jersey transfer.



103 | JERSEY PRINT

Step 1. Choose your jersey | Step 2. Add your name and number | Step 3. Choose a font & Color | Step 4. Add your sponsor logos.

<p>SMITH 123</p>	<p>ABCDEFGHIJKLMNOPQRSTUVWXYZ 0123456789</p>	<p>RALLY</p>
<p><i>SMITH</i> <i>123</i></p>	<p><i>ABCDEFGHIJKLMNOPQRSTUVWXYZ</i> <i>0123456789</i></p>	

SPONSORS

Choose from hundreds of sponsors already on file or have an O'Neal designer help you add your own logo.







FOUR T-SHIRT

Graphic: Color	Part No.	M	L	XL	2XL
PATRIOT: Black	4373-1**	06	07	08	09

FOUR GLOVES

Color	Part No.	6	7	8	9	10	11	12
Black	4373-1**	06	07	08	09	10	11	12



**ATV
ONLY**

FOUR



ATV RACING APPAREL





DEAN WILSON
RÖCKSTAR ENERGY HUSOVARNA

▶ JAMES DOERFLING

CYCLING





CYCLING GEAR & PARTS

Our passion for riding has never stopped. For 48 years we have been creating the finest in apparel, parts and accessories for those that are hitting it on 2 wheels. The Cycling apparel and product lines have been produced without compromise. No matter what type of terrain O'Neal and Azonic are proud to provide you with the proper equipment to take the punishment.



crank



matte black



blocker

WARP HELMET

Graphic: Color	Part No.	XS	S	M	L	XL
MATTE: Black	0615M-0**	01	02	03	04	05
BLOCKER: Black/Yellow	0615-6**	01	02	03	04	05
CRANK: Multi	0615C-7**	01	02	03	04	05

FEATURES

- Lightweight ABS construction (1050g) makes the Warp ideal for longer Downhill tracks and Enduro riding
- Several large air vents for excellent ventilation and temperature control
- Wide field of vision and high visor for improved focus while riding
- O'Neal Fidlock® system makes putting on and removing the Helmet quick and easy, and provides maximum security while riding
- Sweat-absorbing and removable, washable inner liner
- Exceeds CPSC and EN1078 safety standard for bicycle Helmets

WARPHELMET



warhawk



matte black



FURY RL II HELMET

Graphic: Color	Part No.	XS	S	M	L	XL
Warhawk: Green/Black	0499-7**	21	22	23	24	25
Matte: Black	0499-0**	01	02	03	04	05

FEATURES

- Detachable GoPro® Mount
- Lightweight (950g) ABS Shell
- Multiple Vents and channels for increased airflow
- Sweat-absorbing and removable, washable inner liner
- O'Neal Fidlock® magnetic buckle for easy, single-handed fastening and release
- Height adjustable visor
- Exceeds CPSC safety standard for bicycle helmets

PIKE ENDURO HELMET

Color	Part No.	S/M	L/XL
White/Blue	0009-0**	30	31
Black/Yellow	0009-0**	10	11

FEATURES

- Enduro/ Trail/ Freeride helmet with In-mold Technology for increased impact protection and energy dispersion
- Polycarbonate shell, EPS liner, Coolmax® pads
- Lightweight construction
- Extended coverage at the back of the head
- Equipped with Fidlock® Magnetic Buckle
- Unique 'Dual-Flow' System with over-sized vents for improved and constant air circulation inside the helmet
- 3D Multi-Positioning System for perfect adjustment in 3 directions: up-down, front-rear, open-close
- Exceeds CPSC safety standard for bicycle helmets



white/blue



black/yellow



PIKE ENDURO



enduro



tour

BtX BLUETOOTH HELMET

Style: Color	Part No.	S/M	L/XL
ENDURO: Black	0202-1**	02	04
TOUR: Black	0202-7**	02	02

FEATURES

- Built in Bluetooth ® technology
- Built in rechargeable Lithium Battery provides long lasting standby and talk time
- Listen to music, directions or talk wirelessly
- Built in mic allows for wireless talking and communication
- Includes power charger
- Easy Bluetooth ® pairing – Pairs to your mobile device within seconds
- Light weight (List actual weight)
- Clear stereo sound for music and communication
- As with all Bluetooth devices, this product needs to be used with extreme caution. Please carefully read all warning labels on product prior to use.





ELEMENT FR JERSEY

Graphic: Color	Part No.	S	M	L	XL	2XL
BLOCKER: Blue/Black	1048-0**	02	03	04	05	06
BLOCKER: Black/White	1048-1**	02	03	04	05	06
BLOCKER: Red/Gray	1048-3**	02	03	04	05	06
BLOCKER: Black/Hi-Viz	1048-4**	02	03	04	05	06

FEATURES - JERSEY

- Improved comfort while riding with new: more-breathable, faster-wicking, quicker-drying fabric
- Secure back pocket with zipper
- Shorter front and drop tail for a great fit when on the bike
- Mesh panel underarms for increased ventilation
- Flat-locked seams for added comfort
- V-neck collar
- Matching colors with Pin It Shorts

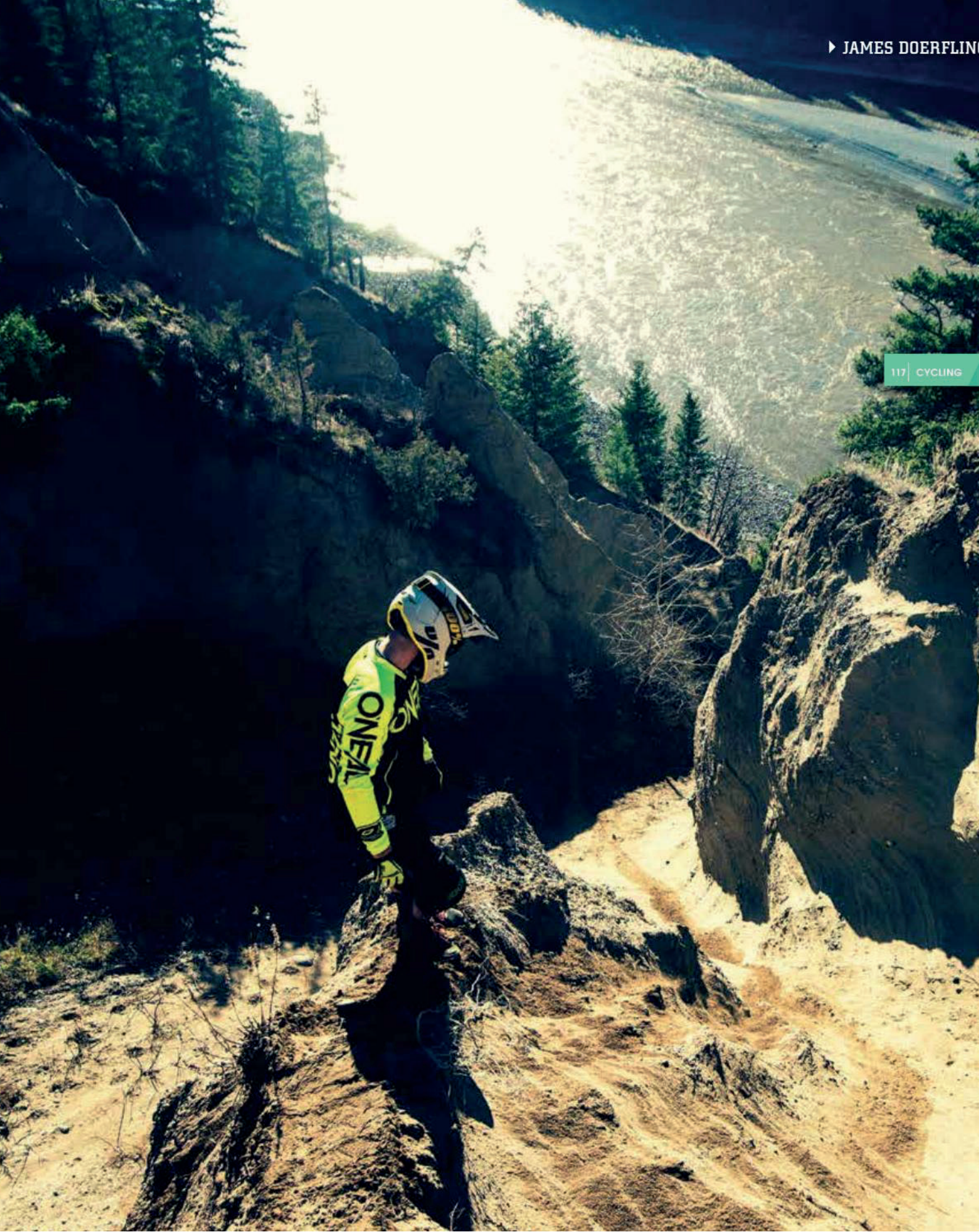
ELEMENT FR SHORT

Graphic: Color	Part No.	28	30	32	34	36	38
BLOCKER: Blue/Black	1078-0**	28	30	32	34	36	38
BLOCKER: Black/White	1078-1**	28	30	32	34	36	38
BLOCKER: Red/Gray	1078-3**	28	30	32	34	36	38
BLOCKER: Black/Hi-Viz	1078-4**	28	30	32	34	36	38

FEATURES - SHORT

- Incredible comfort and freedom-of-movement with a seamless crotch and 4-way stretch, outer material that is lightweight, breathable, quick-drying, and fast-wicking
- 2 front zipper pockets for handy storage
- 2 front zip leg vents and mesh panels
- Mesh lining for added comfort
- Improved durability with tough material panels on the crotch and inside of legs
- Ratchet closure, and slip resistant inner waistband, with rubber strips for secure fit
- 2 front zip leg vents and mesh panels
- Handy hang tab on back of waist for drying and storage
- Useful integrated goggle and sunglasses wipe cloth
- Compatible with O'Neal inner chamois shorts (available separately)

ELEMENT FR



PIN IT III JERSEY

Color	Part No.	S	M	L	XL	2XL
Red	0087-6**	02	03	04	05	06
Gray	0087-8**	02	03	04	05	06

FEATURES - JERSEY

- Improved comfort while riding with new: more-breathable, faster-wicking, quicker-drying fabric
- Secure back pocket with zipper
- Shorter front and drop tail for a great fit when on the bike
- Mesh panel underarms for increased ventilation
- Flat-locked seams for added comfort
- V-neck collar
- Matching colors with Rockstacker Shorts



pin it III

ROCKSTACKER SHORTS

Color	Part No.	28	30	32	34	36	38
Black	1071-7**	28	30	32	34	36	38
Red	1071-8**	28	30	32	34	36	38
Blue	1071-9**	28	30	32	34	36	38

FEATURES

- Extended over-the-knee cut to cover top of pads when riding
- Adjustable waist construction with high back for secure and snug fit
- Air vent system integrated into seams to control cooling while riding
- High back waistband for comfortable fit while riding
- Stretch comfort zones on: front, seat and in the crotch area for perfect fit and comfort
- 5 pockets: 2 x Velcro side, 2 x zipper leg, 1 x zipper rear
- 2 zipper front air vents
- Leg hem adjustment for optimal fit while riding
- Colors match both Element FR and Pin It Jerseys
- Fast-wicking, quick drying 4-way stretch material
- Compatible with O'Neal inner chamois shorts (available separately)



rockstacker

ELEMENT JERSEY

Graphic: Color	Part No.	S	M	L	XL	2X	3X	4X
BURNOUT: Red/White/Blue	0008-6**	02	03	04	05	06	—	—
BURNOUT: Black/Hi-Viz/Orange	0008-9**	12	13	14	15	16	—	—
ATTACK: Black/Hi-Viz	0008-8**	02	03	04	05	06	—	—
AFTERBURNER: Blue/Red	0028-8**	12	13	14	15	16	—	—
Racewear: Black/Gray	0008-1**	02	03	04	05	06	07	08
Racewear: Black/Red	0008-3**	02	03	04	05	06	—	—
Racewear: Blue/Yellow	0008-5**	02	03	04	05	06	—	—

ELEMENT PANT

Graphic: Color	Part No.	28	30	32	34	36	38	40	42	44	46	48	50	52
BURNOUT: Red/White/Blue	0108-6**	28	30	32	34	36	38	40	42	—	—	—	—	—
BURNOUT: Black/Hi-Viz/Orange	0108-9**	58	60	62	64	66	68	70	72	—	—	—	—	—
ATTACK: Black/Hi-Viz	0108-8**	28	30	32	34	36	38	40	42	—	—	—	—	—
AFTERBURNER: Blue/Red	0128-8**	58	60	62	64	66	68	70	72	—	—	—	—	—
Racewear: Black/Gray	0108-1**	28	30	32	34	36	38	40	42	44	46	48	50	52
Racewear: Black/Red	0108-3**	28	30	32	34	36	38	40	42	—	—	—	—	—
Racewear: Blue/Yellow	0108-5**	28	30	32	34	36	38	40	42	—	—	—	—	—



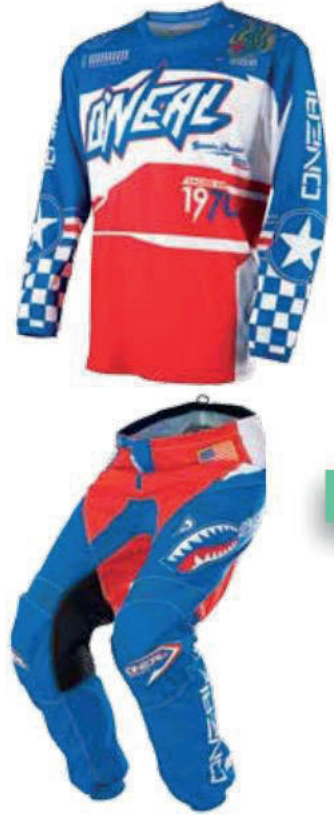
attack



burnout: red/wht/blu



burnout: blk/hi-v/org



afterburner



black/red



blue/yellow



black/gray

FEATURES – ELEMENT JERSEY

- Breathable, moisture-wicking material
- Jersey weight 9.3oz (size L)
- Sublimated graphics
- Sewn-in elbow padding
- Extended tail that keeps jersey tucked in
- V-neck collar

FEATURES – ELEMENT PANT

- Heavy duty but lightweight denier fabrics provide the perfect combination of comfort and protection while riding
- More durable, wear resistant panels on: seat, inside of legs, and knees
- Lighter weight, more breathable panels, positioned away from bike contact points
- Stretch panels in key points on the front, back, and knees of pants for great freedom-of-movement
- Elastic waist with adjustable ratchet closure system for a secure and snug fit
- Protective rubber patches for extra protection when crashing
- Tapered legs with elastic cuffs for a snug fit
- Fully lined for added comfort
- Removable, internal, EVA foam hip protectors



blocker: white/gray



blocker: black/gray/teal



blocker: black/hi-viz



split: blue/yellow



split: black/orange



crank

MAYHEM LITE

MAYHEM LITE JERSEY

Graphic: Color	Part No.	S	M	L	XL	2X
BLOCKER: Black/Hi-Viz	0030-2**	02	03	04	05	06
BLOCKER: White/Gray	0030-2**	22	23	24	25	26
BLOCKER: Black/Gray/Teal	0030-1**	12	13	14	15	16
SPLIT: Blue/Yellow	0030-4**	12	13	14	15	16
SPLIT: Black/Orange	0030-5**	02	03	04	05	06
Crank: Multi	0023-1**	02	03	04	05	06

MAYHEM LITE PANT

Graphic: Color	Part No.	28	30	32	34	36	38	40	42
BLOCKER: Black/Hi-Viz	0130-2**	28	30	32	34	36	38	40	42
BLOCKER: White/Gray	0130-2**	48	50	52	54	56	58	60	62
BLOCKER: Black/Gray/Teal	0130-1**	48	50	52	54	56	58	60	62
SPLIT: Blue/Yellow	0130-4**	48	50	52	54	56	58	60	62
SPLIT: Black/Orange	0130-5**	28	30	32	34	36	38	40	42
Crank: Multi	0123-1**	28	30	32	34	36	38	40	42

FEATURES – JERSEY

- Streamlined and lightweight design for the serious racer
- Jersey weight 7.9oz (size L)
- Multiple panel construction for an ergonomically correct cut and fit
- Sublimated graphics that won't fade
- Extended tail
- Clear silicone printing on lower back to help keep jersey tucked in

FEATURES – PANT

- Streamlined and lightweight design for the serious racer
- No rubber thigh patches for reduced weight and increased mobility
- Durable denier fabrics with triple stitching in critical areas
- Leather heat shield
- Reinforced and adjustable elastic waist system with hook-and-loop closure for a precise fit
- Double snaps at waist closure, reinforced with hook and loop to stay secure and keep the zipper in its place
- More durable, wear resistant panels on: seat, inside of legs, and knees
- Lighter weight, more breathable panels, positioned away from bike contact points
- Stretch panels in key points on: front, back, and knees for great freedom of movement
- Vented mesh liner
- Ergonomically correct, pre-bent and padded knee area
- Tapered lower leg to prevent bunching in boot

BUTCH GLOVE

Graphic: Color Part No. 8 9 10 11 12

Carbon Fiber: Black 0468-8** 08 09 10 11 12

SIZES: Adult S-2XL (8-12)

FEATURES

- Polycarbonate, ballistic coverage, on individual knuckles delivers added confidence while maintaining dexterity
- Additional TPR and direct injection patches on top side of fingers and wrist
- Double layer Clarino® palm padding helps reduce blisters and prevent glove stiffening after drying
- Seamless, silicone rollover fingertips, for enhanced lever control
- Long-lasting, durable, and flexible materials for superior comfort
- Adjustable Hook and Loop wrist closure for secure and adjustable fit
- Pre-curved tailoring for the best fit possible, and helps to eliminate arm pump



wingman



crank



palms



mahalo



two face: orange/white



two face: blue/yellow



two face: black/white



MAYHEM GLOVE

Graphic: Color	Part No.	S	M	L	XL	2XL
TWO FACE: Black/White	0385-4**	38	39	40	41	42
TWO FACE: Orange/White	0385-4**	48	49	50	51	52
TWO FACE: Blue/Yellow	0385-4**	58	59	60	61	62
PALMS: Multi	0385-7**	38	39	40	41	42
MAHALO: Multi	0385-7**	48	49	50	51	52
WINGMAN: Multi	0385-9**	88	89	90	91	92
CRANK: Multi	0385-1**	28	29	30	31	32

SIZES: Adult S-2XL (8-12)

FEATURES

- Silicone printing on palms and finger tips for improved grip and braking control
- Long lasting and flexible material for the perfect fit
- Lightweight design with bold, non-fade graphics
- Seamless rollover fingertips
- Synthetic leather palm with double layer thumb reinforcement
- Hook and loop adjustable wrist closure

MAYHEM GLOVE

MATRIX GLOVE

Graphic: Color	Part No.	8	9	10	11	12
BURNOUT: black/gray	0388-1**	68	69	70	71	72
BURNOUT: black/blue	0388-1**	38	39	40	41	42
BURNOUT: red/black	0388-1**	28	29	30	31	32
WINGMAN: multi	0388-0**	18	19	20	21	22
ATTACK: multi	0388-0**	28	29	30	31	32
AFTERBURNER: multi	0388-3**	88	89	90	91	92

SIZES: Adult S-2XL (8-12)

FEATURES

- Lightweight, uncomplicated design for superb feel and comfort while riding
- Simple design for great freedom-of-movement
- Long lasting and flexible materials for the perfect fit
- Super lightweight design with bold non-fade graphics
- Synthetic leather palm with double layer thumb reinforcement
- Pre-curved tailoring for the best fit possible, and helps to eliminate arm pump



burnout: black/gray



burnout: black/blue



burnout: red/black



wingman



afterburner



attack

MATRIX GLOVE



blocker: black



blocker: blue



blocker: red



blocker: hi-viz

AMX BLOCKER GLOVE

Graphic: Color	Part No.	8	9	10	11	12
BLOCKER: Black	1101-0**	48	49	50	51	52
BLOCKER: Blue	1101-0**	18	19	20	21	22
BLOCKER: Red	1101-0**	28	29	30	31	32
BLOCKER: Hi-Viz	1101-0**	38	39	40	41	42

SIZES: Adult S-2XL (8-12)

FEATURES

- Designed by Greg Minnaar, 3 times World MTB DH Champion
- Also great for the MX rider who wants a thin supple glove with lots of feel when riding
- Super supple Nanofront® palm material for great feel, comfort and control while riding
- Designed for use with smart phone and tablet screens
- Super lightweight with great freedom-of-movement, the perfect choice for maximum feel and bike control
- Pre-curved tailoring for the best fit possible, and helps to eliminate arm pump
- Simple slip-on design

ELEMENT GLOVE

Graphic: Color	Part No.	8	9	10	11	12	13	14	15
RACEWEAR: Black	0392-1**	08	09	10	11	12	13	14	15
RACEWEAR: Blue/Yellow	0392-2**	08	09	10	11	12	—	—	—
RACEWEAR: Red	0392-3**	08	09	10	11	12	—	—	—
RACEWEAR: Black/Hi-Viz	0392-5**	08	09	10	11	12	—	—	—

SIZES: Adult S-5XL (8-15)

FEATURES

- Vented mesh top for increased airflow and cooling
- TPR strips for added protection from branches and debris
- Adjustable wrist with Velcro® closure for a secure fit
- Stretch Lycra® side panels for added comfort and flexibility
- Ergonomic padding and stitching on palm for increased comfort and dexterity
- Pre-curved tailoring for the best fit possible, and helps to eliminate arm pump



blue/yellow



black/hi-viz



red



black



KNEE GUARDS

DIRT RL GUARDS

Type: Color	Part No.	S	M	L	XL
KNEE: Gray	0277-2**	02	03	04	05
KNEE: Blue	0277-3**	02	03	04	05
ELBOW: Gray	0278-2**	—	03	04	05
ELBOW: Blue	0279-4**	—	03	04	05

FEATURES - ELBOW GUARD

- Comfortable and soft elbow guard, with hard shell protection
- Lightweight and ultra-thin construction
- Sweat-absorbing and breathable neoprene helps reduce irritation while riding
- Abrasion-resistant material in critical areas
- Adjustable elastic Velcro® strap for secure and snug fit
- Slim enough to be worn under your jersey
- Moisture absorbing and breathable material
- Exceeds EN1621 European safety standard

FEATURES - KNEE GUARD

- Comfortable soft knee guard with integrated hard shell protection
- Lightweight and ultra-thin construction
- Made from sweat-absorbing and breathable neoprene
- Abrasion-resistant material in critical areas
- Adjustable, elastic Velcro® strap provides a secure and snug fit
- Moisture absorbing and breathable material



elbow



knee

PARK FR KNEE GUARD

Color	Part No.	XS	S	M	L	XL	2XL
Black	0265-5**	02	03	04	05	06	07

FEATURES

- Lightweight, breathable, and comfortable
- Full-length knee and shin coverage for maximum protection
- Extended neoprene thigh sleeve for secure fit whilst riding
- Plastic mesh shells for improved airflow and ventilation
- Perforated foam on sides, top, and bottom of guards deliver added protection and improved ventilation while reducing weight
- 3 elastic Velcro® straps provide a secure and snug fit while riding
- Ergonomic shaping, around the calf muscles and knees, for the perfect blend of fit and comfort



park fr



UNDERDOG III ARMOR

Item	Part No.	S	M	L	XL	2X
Underdog III	0571-4**	02	03	04	05	06

SIZES: Adult S-XXL

FEATURES

- Constructed from high-impact resistant, injection molded plastic, and IPX® material designed to protect your: shoulders, elbows, forearms, chest, and back
- IPX® back protector extends from the base of the neck to lower back; helping ensure complete protection where you need it most
- 9 areas of adjustment for the perfect fit
- Back protector zips off for easy cleaning
- Extensive mesh venting helps keep you cool while riding
- Adjustable elastic kidney belt with Hook and Loop closure for a secure fit
- Neck brace compatible

BODY ARMOR

UNDERDOG II YOUTH ARMOR

Type	Part No.	S	M	L
Underdog II	0571-3**	02	03	04

SIZES: Youth S-L

FEATURES

- Constructed with high impact injection molded plastic to deflect dirt and debris
- Articulated back protector for increased mobility
- Removeable back, elbow and forearms
- Adjustable elastic kidney belt with hook and loop closure
- Extensive mesh and padded foam venting to help keep cool
- 9 areas of adjustment for the perfect fit



129 | CYCLING

HOLESHOT PROTECTOR

Color	Part No.	M/L
Black	1285-0**	04

NECK
BRACE
Compatible

SIZES: Adult M/L

FEATURES

- Neck brace compatible
- Articulated back protector for increased mobility
- Airprene® shoulder padding for comfort
- Integrated waist closure system
- Vented foam padding to keep you cool



TRAIL SHORT

Color	Part No.	S	M	L	XL	2XL
Black/Lime	1288-0**	02	03	04	05	06



SIZES: Adult S-XXL

FEATURES

- High-density, EVA foam for added protection in the key impact zones of hips, thighs, and coccyx (tail bone)
- Pads are ergonomically designed to be as comfortable and unobtrusive as possible when worn under riding shorts and pants
- Flat double seams, elasticated waist and legs, and Spandex mesh legs provide a great fit for comfortable riding
- Coolmax® chamois inset for added comfort

TRAIL PANT

Color	Part No.	S	M	L	XL	2XL
Black/Lime	1288-1**	02	03	04	05	06

SIZES: Adult S-XXL

FEATURES

- Comfortable form fitting protector long pants
- High density EVA padding for protection in hip, thigh and tailbone area
- Ergonomically designed pads
- Flat overlock elastic stitched seams
- Crotch insert Coolmax® chamois for additional comfort
- Silicon tape on inner ankle area for stability





▶ MATT MACDUFF

AZONIC

A large, textured green sail is the central focus, set against a dark, starry night sky. The sail is attached to a wooden boat, with the dark wood of the hull visible at the bottom. The overall mood is serene and atmospheric.



OUTLAW 650B WHEELSET

Type: Color	Part No.	142mm	150mm
Wheelset: Black	3200-8**	65	66
Wheelset: Blue	3200-8**	67	68
Wheelset: Red	3200-8**	69	70
Wheelset: Green	3200-8**	71	72
Rim Only: Black	3200-885	—	—

TYPES: Wheelset: 142mm, 150mm; Rim Only

FEATURES:

- Weight: 142mm 1973g (set), 150mm 1988g (set)
- 27.5" Welded Double-wall pinned rim
- 32 spoke construction for added strength and pedaling efficiency
- Hub/Brake Compatibility: 6-Bolt Disc
- Nipple Material: Sapim Alloy Secure Lock—Brass standard
- 6061-T6 Aluminum rim construction
- Front wheel converts from Q/R, 15mm & 20mm through axles
- Comes with conversion kit
- 142mm & 150mm rear wheel spacing
- Disc only
- 8/9/10/11 speed compatible
- Tubeless compatible
- XD driver compatible
- 157mm conversion kit available (pg. 137)



OUTLAW WHEELS



▶ SAMANTHA KINGSHILL

OUTLAW 29ER

Type: Color	Part No.
Wheelset: Black	3200-905
Rim Only: Black	3200-912

TYPES: Wheelset: 135mm; Rim Only

FEATURES:

- Weight: 2270g (set)
- Double-wall pinned rim
- 32 spoke construction for added strength and pedaling efficiency
- 6061-T6 Aluminum rim construction
- Front wheel converts from Q/R, 20mm axle adapter
- Comes with conversion kit
- 142mm rear wheel spacing
- Disc only
- 8/9 speed compatible



OUTLAW 26"

Type: Color	Part No.	135mm	150mm
Wheelset: Black	3200-8**	00	01
Rim Only: Black	3200-810	—	—

TYPES: Wheelset: 135mm, 150mm; Rim Only

FEATURES:

- Weight: 135mm 2340g (set), 150mm 2362g (set)
- Welded Double-wall pinned rim
- 32 spoke construction for added strength and pedaling efficiency
- 6061-T6 Aluminum rim construction
- Front wheel converts from Q/R, 15mm & 20mm through axles
- Comes with conversion kit
- 135mm & 150mm rear wheel spacing
- Disc only
- 8/9/10/11 speed compatible
- Tubeless compatible
- XD driver compatible
- 142mm conversion kit available (pg. 137)



RECOIL FRONT HUB

Color	Part No.	32 Hole
Black	3200-8**	14
Red	3200-8**	15



RECOIL ALLOY REAR HUB

Color	Part No.	135mm	150mm
Black	3200-8**	16	18
Red	3200-8**	17	19



SIZES: Front; 32 Hole
Rear; 135mm or 150mm

FEATURES - FRONT HUB:

- 32 hole front hub converts from QR to 15mm and 20mm (THRU. Axle)
- Comes with QR/20mm conversion kit
- Weight: 236g
- Standard 6 bolt rotor fitting

FEATURES - REAR HUB:

- 32 hole, 7075 Aluminum hub body
- Converts from QR to 12mm x 135mm bolt on axle
- Weight: 135mm; 430g, 150mm; 445g
- Standard 6 bolt rotor fitting



137 | AZONIC

RECOIL AXLE

Type	Part No.
Aluminum	3200-004

SIZE: 12mm x 135mm

FEATURES

- An astonishing 102g
- Ultra lightweight T-7000 series Aluminum for maximum strength and durability



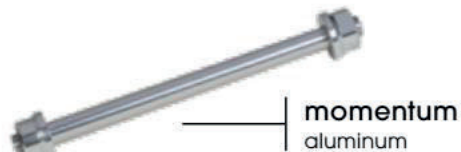
MOMENTUM AXLE

Type	Part No.
Steel	3200-003
Aluminum	3200-030

SIZE: 12mm x 135mm

FEATURES

- Perfect for any 12mm x 135mm bolt on application or to just add strength to your current set-up
- Ultra strong 4130 Chromoly construction
- 3/8 axle step down dropout
- Weight: Steel; 136g, Aluminum; ±65g



AXLE ADAPTOR

Size	Part No.
15mm	3200-008
20mm	3200-009

SIZES: 15mm or 20mm

FEATURES

- 15mm thru. axle spacers
- 20mm thru. axle spacers



OUTLAW CONVERSION KIT

Type	Part No.
135mm	3200-637
142mm	3200-639
157mm	3200-640

SIZES: 135mm, 142mm, 157mm

FEATURES

- Converts wheel spacing



WORLD FORCE PEDAL

Graphic: Color	Part No.
Matte Black	3120-100
Matte Red	3120-101

FEATURES

- The ultimate flat pedal developed by top riders
- True concave platform achieved through platform shape and pin height
- CNC machined 6061 T6 Aluminum body
- Strong 4130 chromo axle
- Parallel ridges on inboard, outboard and middle of body for additional grip
- Perfect balance of weight, durability and strength
- Weight: 380g
- Outboard + center bearing; Inboard bushing, for long-life and smooth running
- Spare pins and tool included



FLAT IRON PEDAL

Graphic: Color	Part No.
Black	3056-900
Yellow	3056-901

FEATURES

- Fatty pins for durability and use with knobby shoes
- Micro pins for decreased weight and increased traction
- Customize your pedals to your riding style by using a mixture of pin configurations
- Damaged pins can be removed from either side of the pedal
- 6061-T6 forged Aluminum body
- 4130 Chromo axle
- Oversized sealed outboard bearing with additional internal bushing
- Pin removal tool and spare pins included
- Weight: 345g/pair (3.85g with pins/pair)





SHOO IN PEDAL

Graphic: Color	Part No.
Black	3056-760
White	3056-761
Red	3056-761
Hi-Viz	3056-761

FEATURES

- Chromo spindle
- Loose ball bearings
- Grippy, molded pins
- Weight: only 322g/pair

139 | AZONIC



BIGFOOT PEDAL

Graphic: Color	Part No.
Black	3062-101
Hi-Viz	3062-103
Aluminum	3062-104

FEATURES

- Premium flat pedal for MTB weighing in at only 370g/pair
- Great stability and contact with the bike (120 x 110mm)
- Great pedal clearance with a 12mm profile
- Outboard axle locking nuts for tension adjustment and removing play
- Forged and CNC machining 6061 Aluminum body which is lightweight, thin and strong.
- Forged 4130 Aluminum Chromo axle
- 32 grippy and durable pins
- Contains 4 spare pins



420 FLATS PEDAL

Graphic: Color	Part No.
Ano Black	3056-111
Ano Red	3056-112
Ano Blue	3056-116
Ano Green	3056-117

FEATURES

- Extruded body
- CNC machined
- DU/sealed bearings
- Removable W33 & V9 Pins
- Weight: 420 grams/pair
(440g with pins/pair)



SWITCHBACK SPD PEDAL

Graphic: Color	Part No.
Black	3120-200

FEATURES

- 572 grams a pair with pins.
- Aluminum body
- SPD compatible
- 2 sided SPD design
- Adjustable tension design
- 2 DU bushings 1 Sealed bearing
- 110mm-w / 100mm-l / 17mm thin
- CNC Chromo axle
- 24 removable pins





LOGO GRIP

Color	Part No.
Black	3019-000
Blue	3019-001
Red	3019-002

SIZES: One size

FEATURES

- Thin recessed grip profile for maximum feel
- Anodized aluminum lock-on collars
- Grip length: 130mm
- Allen Screws to tighten collars
- Comes as grip set with collars and plugs



AGILE BARS

Color	Part No.	780mm
Black/Gray	3001-1**	11
Blue	3001-1**	12
Crank	3001-1**	13
Red	3001-1**	15
Titanium Gray	3001-1**	16

SIZES: 31.8mm, 780mm, 1" Rise

FEATURES

- Double-buttet 7050 T6 Aluminum
- Clamp size: 31.8mm
- Anodized colors
- Marked for a custom cut length
- Weight: $\pm 350g$
- Width: 780mm with 1" rise
- Upsweep: 5°, Backsweep: 7°



AGILE
blue



AGILE
red



AGILE
black/gray



AGILE
titanium gray



AGILE
crank



FLOW BARS

Color	Part No.	750mm, 1"	750MM, 2"	800MM, 1"
Black/White	3011-***	000	100	200
Black/Blue	3011-***	002	101	201
Black/Yellow	3011-***	003	102	203
Black/Red	3011-***	004	103	204
Black/Gray	3011-***	001	104	201

SIZES: 31.8mm, 750mm or 800mm, 1" or 2" Rise

FEATURES

- Double-buttet 7050 T6 Aluminum
- Clamp size: 31.8mm
- Marked for a custom cut length
- Weight: $\pm 350g$
- Width: 750mm with either 1" or 2" rise, 800mm with 1" rise
- Upsweep: 4°
- Backsweep: 7°



CFK CARBON BAR

Color	Part No.
Carbon	3001-310

SIZE: 31.8mm, 800mm, 20mm Rise
AVAILABLE COLORS: Carbon fiber

FEATURES

- Super lightweight carbon handlebar
- Available in 800mm
- Weight: $\pm 203g$ (800)
- Clamp size: 31.8mm
- 20mm rise, 5° upsweep, and 8°
- Classic matte carbon fiber woven finish





► MAXIMILIAN MEY



PREDATOR STEM

Color	Part No.	50mm
Black	3075-1**	00
Red	3075-1**	01
Blue	3075-1**	02
Hi-Viz	3075-1**	09

SIZES: 31.8mm/50mm

FEATURES

- Light and strong stem perfect for Enduro riding
- CNC Machined 6061 T6 Aluminum
- Laser etched logos
- 31.8mm bore diameters
- 50 & 60mm extension
- 40mm stack height
- 5° angle
- Weight: 113g





BARETTA II STEM

Color	Part No.
Black	3050-220
Blue	3050-221
Red	3050-222
Hi-Viz	3050-225

SIZES: 31.8mm/40mm

FEATURES

- CNC Machined 6061 T6 Aluminum
- Laser etched logos
- 31.8mm bore diameters
- 40mm extension
- 38mm stack height
- 15° rise
- Weight: 196g

CLUB STEM

Color	Part No.
Black	3050-200

SIZES: 31.8mm/45-50mm

FEATURES

- Direct mount stem
- CNC Machined 6061 T6 Aluminum
- 31.8mm bore diameters
- Laser etched logos
- 45-50mm extension
- 0° rise
- Weight: 150g





Q/R CLAMP

Color	Part No.	31.8	34.9
Black	3033-1**	17	18
Red	3033-1**	26	27
Blue	3033-1**	32	33
Green	3033-1**	36	37

FEATURES

- Seat clamp designed for both MTB and BMX use
- Strong and efficient clamp design
- 7075 Aluminum construction
- Available in 31.8mm and 34.9mm
- Weight: 34g (31.8mm), 36g (34.9mm)

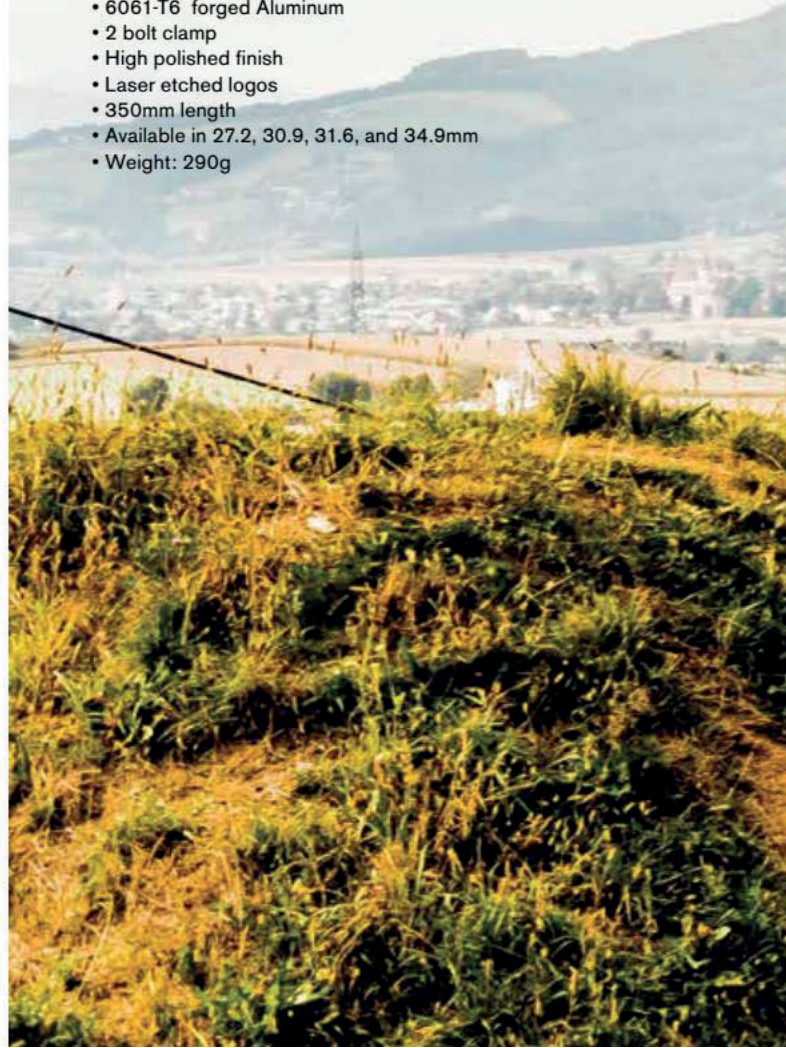
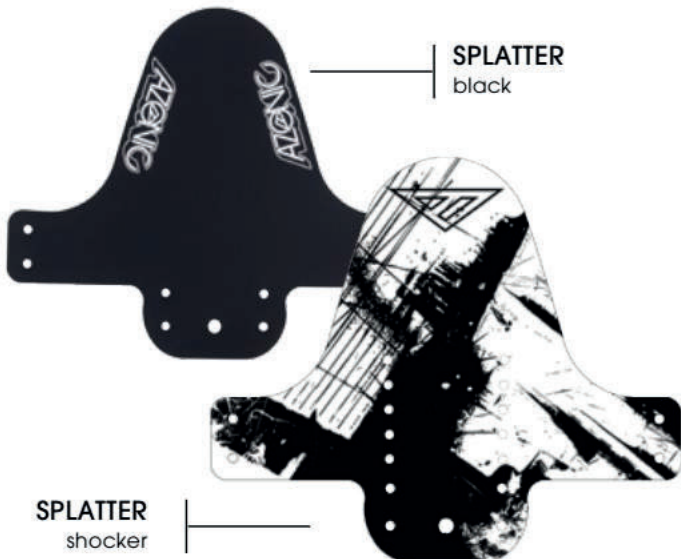


PIN IT SEAT POST

Color	Part No.	27.2	30.9	31.6	34.9
Black	3033-2**	00	10	20	30
Blue	3033-2**	01	11	21	—
Red	3033-2**	02	12	22	—

FEATURES

- 6061-T6 forged Aluminum
- 2 bolt clamp
- High polished finish
- Laser etched logos
- 350mm length
- Available in 27.2, 30.9, 31.6, and 34.9mm
- Weight: 290g



SPLATTER FENDER

Color	Part No.
Black	3021-000
Shocker	3021-111

FEATURES

- Mount front or rear
- Universal fit for front or back: 8 holes
- Comes with 4 zip ties (and 4 spares)
- Polypropylene
- Weight: 33g





ONEAL OF US

#ONEOFUS

Every day for nearly 50 years One of Us is out riding. Be it professionals, family, friends or staff each One of you allows us to make it happen. As a team, we cannot be stopped. The continued contribution, feedback and support is most sincerely appreciated. For those of you we were lucky enough to capture here as well as those that are camera shy, we thank you for taking the ride with us as this journey continues.



FREDDIE & AMY NOREN

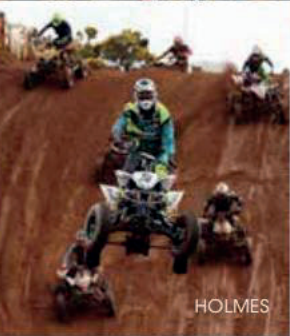


ANDERSON

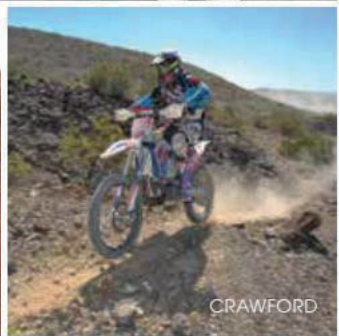
CONNOR EDDY



MAX EDDY



HOLMES



CRAWFORD



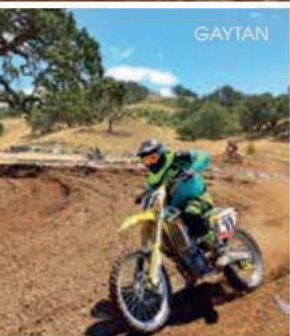
KINSER ENDICOTT



BAKER



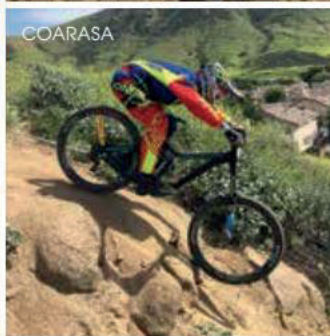
FRANCISCO SEPTIEN



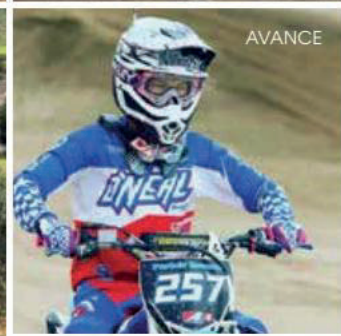
GAYTAN



BUTTRICK



COARASA



AVANCE



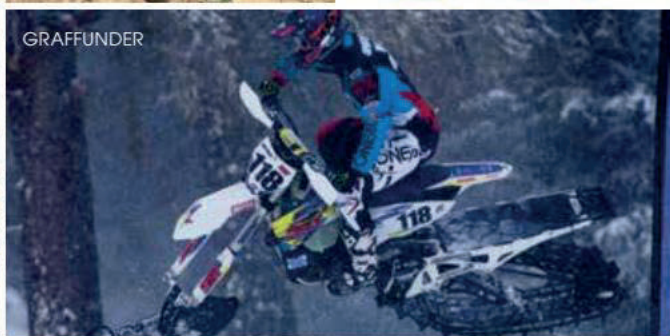
MCGINN



KILBARGER



JIM HOLLEY



GRAFFUNDER



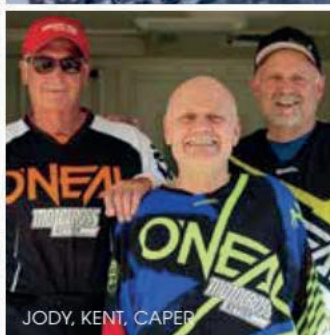
RAHA



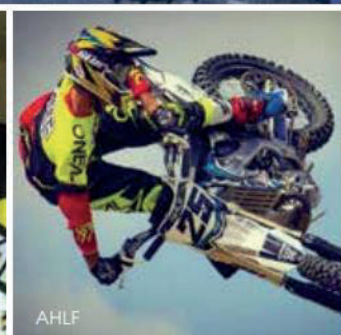
MASON & JAMES O'NEAL



HUDSON



JODY, KENT, CAPEN



AHLF



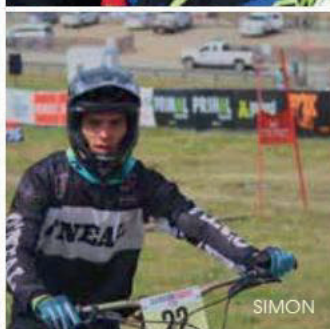
HART



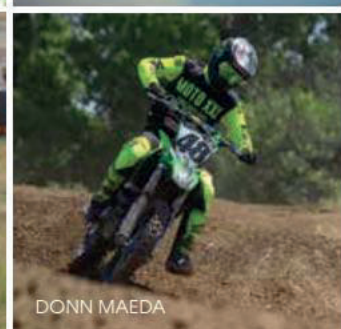
DUBACH



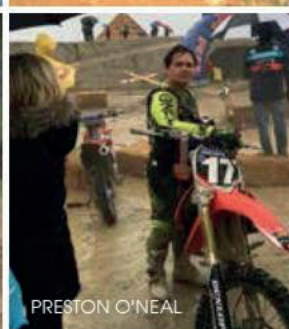
WARD BOYS



SIMON



DONN MAEDA



PRESTON O'NEAL



RICARDO DE LA PESA



CATANZARO



KYLE REDMOND



PICCIUTO



YNN



STAPLETON



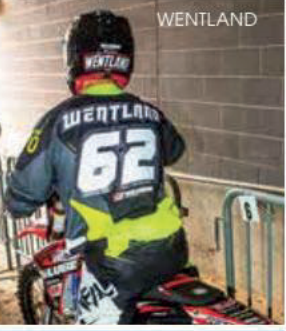
PARSONS



HEAVEN'S DEVILS



BUYTEN



WENTLAND



SIFUENTES



MILLER



NAGY



LOPEZ



M SRT



TRUBEY



BRADEN O'NEAL
SVC YAMAHA



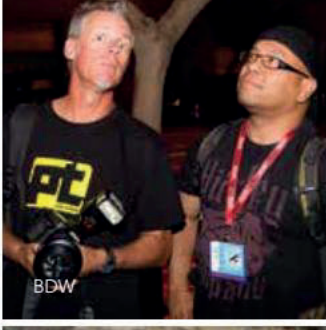
SCIACQUA



UMMY



TEAM BREMEN RACING



BDW



WILLOH



WOOLSLAYER



CAVERHILL & KANESHIRO



LALO



KINGSHILL



COLE



MYERS



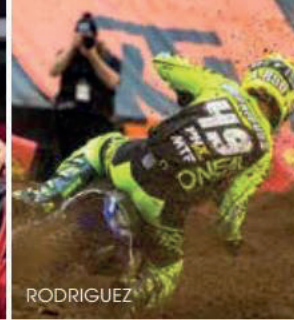
GREG MINNAAR



JANNIRO



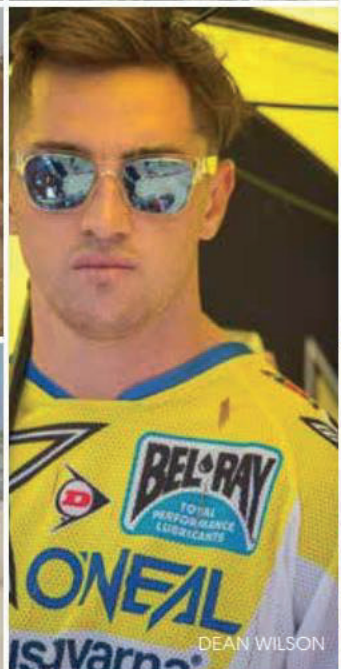
MARK AND JON



RODRIGUEZ



SMITH



DEAN WILSON



SHANE ESPO



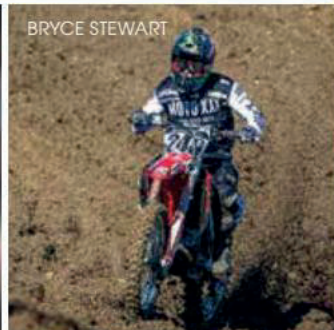
JIM O'NEAL



CRAWFORD



BRACKEN-HALL



BRYCE STEWART



DEVEN RA



◀ KYLE CUNNINGHAM
JGR SUZUKI

► DEAN WILSON
FACTORY ROCKSTAR HUSQVARNA





Discover a comprehensive collection of motorcycle riding gear on our website.