

O'NEAL



ISINCE 1970

In the foothills of Los Angeles, California during the 1960's a young man named Jim O'Neal would ride his modified Triumph to high school. After school and on weekends Jim would put his bike through its paces, hitting the dirt trails and carved tracks that peppered the hillside above the city. In 1966, these same riding locations became host to America's first Motocross race at Hopetown. It was then that Jim's passion for riding turned to racing and in 1970, O'Neal was born.

Now, 49 years later, you can still find the O'Neal US office just a few miles from the old Hopetown track. In that office, our dedicated team members are working to develop products that will allow our riders to go further and ride faster than ever before. Jim O'Neal hasn't quit riding and can be found on those tracks and trails just outside this great city, pushing his passions to the limits every chance he gets. You can still find O'Neal products at nearly 7,000 retail locations worldwide.







ONEAL
ENJOYRIDE

447

Kelly's Kawasaki

VZ



MOTO

05 | HELMETS

33 | RIDING GEAR

69 | GLOVES

77 | BOOTS

93 | PROTECTION

99 | YOUTH

109 | ACCESSORIES

115 | JERSEY PRINTING

117 | MOTO XXX

127 | FOUR

CYCLING

131 | HELMETS

137 | RIDING GEAR

151 | GLOVES

155 | FOOTWEAR

159 | PROTECTION

163 | AZONIC

TABLE OF

CONTENTS





HELMETS

10 SERIES

5 SERIES

3 SERIES

2 SERIES

SIERRA II

SLAT

|

ULTRA-LIGHTWEIGHT CARBON

The 10 Series helmets from O'NEAL feature either an ultra-lightweight full carbon shell weighing just 1080g or a fiberglass construction with a shell weight of only 1150g (size M). The 10 Series helmets have maximum airflow throughout the helmet delivered by oversized vents and custom CNC calculated EPS channels allowing air to flow where it is needed most. Other features include ultra-plush removable and washable padded inner liner that keeps you cool and dry by wicking away sweat. The 10 Series also features a removable mouthpiece for easy cleaning, side goggle traction pad to keep your goggle strap in place as well as a high air intake mouth vent with micro mesh screen allowing maximum air in, while keeping debris out. All 10 Series helmets exceed DOT and ECE 22-05 safety standards.

CARBON RACE HELMET

SIZES: Adult XS-XXL

FEATURES:

- *Lightweight Carbon Shell construction*
- *Weight 1080g (±50g) (size L)*
- *Adjustable visor design*
- *Maximum airflow throughout the helmet, delivered by oversized vents and EPS channels*
- *Coolmax® liner - Ultra-plush, removable/washable padded liner keeps you cool and dry by wicking away sweat*
- *Rubber roost nose guard*
- *Durable multi-colored, clear-coated graphics*
- *Meets standards: DOT, ECE 22-05, AS/NZS and ACU*
- *Side goggle traction pad keeps goggle strap securely in place*
- *High air intake mouth vent with screen lets air in while keeping debris out*
- *Replacement liners, cheek pads and visors available*

ICON HELMET

SIZES: Adult XS-XXL

FEATURES:

- *Lightweight fiberglass construction*
- *Weight (±50g): 1150 g (size M)*
- *Adjustable visor design*
- *Maximum airflow throughout the helmet, delivered by oversized vents and EPS channels*
- *Coolmax® liner - Ultra-plush, removable/washable padded liner keeps you cool and dry by wicking away sweat*
- *Rubber roost nose guard*
- *Removable mouthpiece for easy cleaning*
- *Durable multi-colored, clear-coated graphics*
- *Meets standards: DOT, ECE 22-05, AS/NZS and ACU*
- *Side goggle traction pad keeps goggle strap securely in place*
- *High air intake mouth vent with screen lets air in while keeping debris out*
- *Replacement liners, cheek pads and visors available*





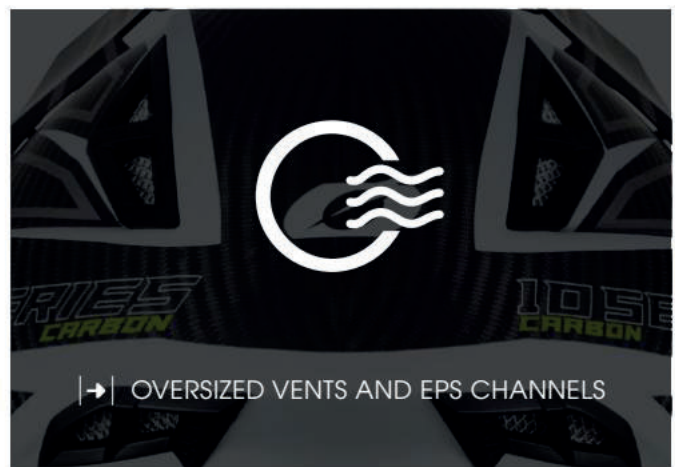
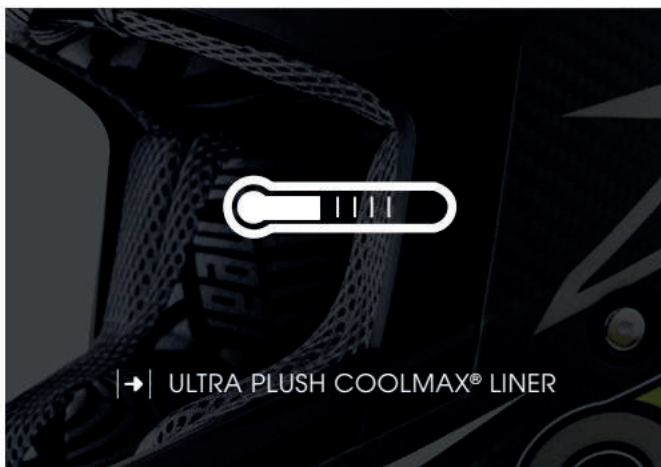
10 SERIES
CARBON

NEAL

ENJOY THE RIDE

O'NEAL
10 SERIES
DOT
FMVSS No. 218
CERTIFIED

ECE APPROVED
R 22.05



10 SERIES HELMET 0624-4**

Graphic: Color	XS	S	M	L	XL	2X
CARBON RACE	01	02	03	04	05	06

designed in California

2019

10 SERIES



10 SERIES HELMET 0624-I

Graphic: Color	XS	S	M	L	XL	2X
ICON: Red/White/Black	01	02	03	04	05	06

10 SERIES



10 SERIES

ICON



10 SERIES HELMET 0624-I

Graphic: Color	XS	S	M	L	XL	2X
ICON: Gray/Orange	11	12	13	14	15	16



10 SERIES HELMET 0624-I

Graphic: Color	XS	S	M	L	XL	2X
ICON: Blue/Red	21	22	23	24	25	26

STREAMLINED AND RACE READY

The O'Neal 5 Series Helmet is constructed using a lightweight ABS shell. The 5 Series line pairs a Coolmax® liner with multiple air vents to help keep you cool and dry during long rides and hot summer motos.

5 SERIES HELMET

SIZES: Adult XS-XXL

FEATURES

- *Lightweight ABS shell construction*
- *Shell weight (size large): 1380grams (±50)*
- *Coolmax® liner Ultra-plush, removable/washable padded liner keeps you cool and dry by wicking away sweat*
- *Adjustable visor design*
- *Multiple air vents help keep you cool and dry*
- *Durable multi-colored matte coated graphics*
- *Replacement parts available*
- *Meets DOT, ECE 22-05 and AS/NZS safety standards*



5 SERIES





5 SERIES

HEXX



5 SERIES HELMET 0618-H

Graphic: Color XS S M L XL 2X

HEXX: Gray/Black 11 12 13 14 15 16

5 SERIES HELMET 0618-H

Graphic: Color XS S M L XL 2X

HEXX: Red/Gray 31 32 33 34 35 36



5 SERIES HELMET 0618-H

Graphic: Color XS S M L XL 2X

HEXX: Black/White 01 02 03 04 05 06



5 SERIES HELMET 0618-R

Graphic: Color XS S M L XL 2X

RIDER: Black 01 02 03 04 05 06



5 SERIES

WARHAWK



5 SERIES HELMET 0618-2

Graphic	XS	S	M	L	XL	2X
WARHAWK	81	82	83	84	85	86



5 SERIES HELMET 0618W-0

Graphic	XS	S	M	L	XL	2X
WINGMAN	11	12	13	14	15	16

ADVANCED RACING

READY TO RIDE

The O'Neal 3 Series Helmet is constructed using a lightweight ABS shell and delivers full venting for improved aerodynamics and overall cooling. With a wide variety of graphics, we can safely say there is a 3 Series Helmet for everyone in the family.

3 SERIES HELMET

SIZES: Adult XS-XXL

FEATURES

- Lightweight ABS shell construction
- Shell weight (size large): 1340grams (±50)
- Ultra-plush, removable/washable padded liner keeps you cool and dry by wicking away sweat
- Adjustable visor design
- Intake and exhaust vents for ventilation and cooling
- Durable multi-colored clear coated graphics
- Replacement parts available
- Meets DOT, ECE 22-05 and AS/NZS safety standards



3 SERIES





3 SERIES HELMET 0623-1

Graphic: Color XS S M L XL 2X
 ATTACK: Black/Hi-Viz 11 12 13 14 15 16

3 SERIES HELMET 0623-1

Graphic: Color XS S M L XL 2X
 RANCID: Flat Black 21 22 23 24 25 26



3 SERIES

VILLAIN



3 SERIES HELMET 0623-H

Graphic: Color	XS	S	M	L	XL	2X
HELIUM: Red	31	32	33	34	35	36

3 SERIES HELMET 0623-V

Graphic: Color	XS	S	M	L	XL	2X
VILLAIN: Black/White	01	02	03	04	05	06



3 SERIES HELMET 0623-0

Graphic: Color	XS	S	M	L	XL	2X	3X
FLAT: Black	61	62	63	64	65	66	67

+ Now available in Size 3XL

3 SERIES HELMET 0623-0

Graphic: Color	XS	S	M	L	XL	2X
FLAT: White	51	52	53	54	55	56



3 SERIES

RIFF



3 SERIES HELMET 0623-R

Graphic: Color	XS	S	M	L	XL	2X
RIFF: Black/Neon	11	12	13	14	15	16

3 SERIES HELMET 0623-R

Graphic: Color	XS	S	M	L	XL	2X
RIFF: Pink	71	72	73	74	75	76

2 SERIES

MADE FOR THE DIRT

The O'Neal 2 Series Helmet is constructed using a lightweight ABS shell. Updated with sleek, race-inspired stylings, the 2 Series helmet will make a welcome addition to your kit.

2 SERIES HELMET

SIZES: Adult XS-XXL

FEATURES:

- Shell is constructed with ABS
- Shell weight (size L): 1450grams (±50)
- Ultra-plush removable/washable padded liner
- Multiple air vents ventilation and cooling
- Rubber roost nose guard
- Height adjustable visor
- Double-D release chin strap
- Durable multi-colored clear coated graphics
- Meets standards: DOT, ECE 22-05



2 SERIES





2 SERIES HELMET 0200-2

Graphic: Color	XS	S	M	L	XL	2X
SPYDE: Black/Hi-Viz	11	12	13	14	15	16

2 SERIES HELMET 0200-2

Graphic: Color	XS	S	M	L	XL	2X
SPYDE: Orange/White	41	42	43	44	45	46



2 SERIES

SLICK



2 SERIES HELMET 0200-S

Graphic: Color	XS	S	M	L	XL	2X
SLICK: White/Black	41	42	43	44	45	46



2 SERIES HELMET 0200-S

Graphic: Color	XS	S	M	L	XL	2X
SLICK: Black/Gray	11	12	13	14	15	16

SIERRA II



COMB | BLACK/WHITE



SIERRA II



FLAT | BLACK



FLAT | WHITE

SIERRA II HELMET

Graphic: Color	Part No.	XS	S	M	L	XL	2X
FLAT: Black	0817-5**	01	02	03	04	05	06
FLAT: White	0817-5**	11	12	13	14	15	16
COMB: Black/White	0817-C**	11	12	13	14	15	16

SIZES: Adult XS-XXL

FEATURES:

- Shell is constructed with ABS
- Weight: 1590g (±50g)
- Moisture-wicking, removable/washable air channeled comfort liner
- Vent holes for optimal ventilation
- Integrated face shield with UV protection
- Height adjustable helmet shield
- Padded Chin Strap with Double-D safety lock
- Meets DOT and ECE 22.05 safety standards
- Designed for Street, Enduro and Adventure Bikes
- Replacement parts available

SLAT



SLAT | TORMENT

SLAT HELMET

SIZES: Adult XS-XXL

FEATURES:

- Fiberglass shell construction
- Weight: 990g (±50g)
- Moisture-wicking, removable/washable comfort liner
- Vent holes for optimal ventilation
- Height adjustable helmet shield
- Padded Chin Strap with Double-D safety lock
- Meets DOT and ECE 22.05 safety standards
- Replacement parts available

SLAT



SLAT / TORMENT



SLAT / SOLID

SLAT HELMET 0806-2**

Graphic: Color	XS	S	M	L	XL	2X
TORMENT: Black	01	02	03	04	05	06

SLAT HELMET 0806-1**

Graphic: Color	XS	S	M	L	XL	2X
SOLID: Black	11	12	13	14	15	16





MX GEAR

*HARDWEAR
MAYHEM-LITE
O'NEAL ELEMENT
THREAT
ADVENTURE*

|

HARDWEAR

RACING TECHNOLOGY

With 49 years of racing technology and development, the Hardwear line is the culmination of race-inspired graphics and features based on the needs of riders like Justin Hill and Phil Nicoletti. The Hardwear line has received critical acclaim from the world's harshest test labs and editorial staff. Superior materials give unsurpassed freedom of movement, while Pro-Lite material and intake vents work to keep you cool in the most severe conditions. Whether on the track or out in the backcountry, a Hardwear gear set will be a comfortable, yet durable addition to your arsenal.



HARDWEAR



|→| INTAKE VENTS & 100% VENTED MESH LINER



|→| EXTENDED TAIL WITH COOLING MESH



|→| OUR LIGHTEST HARDWEAR PANT EVER



|→| LIGHTWEIGHT PERFORMANCE FABRIC



|→| FULLY ADJUSTABLE BELT SYSTEM



|→| LEATHER KNEE PANELS

RIZER JERSEY

SIZES: Adult S-XXL

FIT: Athletic Pro Style fit. Not too loose or too tight.
Raglan Cut

FEATURES:

- Our most advanced jersey ever, featuring the All-New 'Pro-Lite' Performance Fabric with 4-way stretch
- Closed cell vented panels under the arms, and on wrists
- Sublimated no fade graphic
- Vented and Tagless neck design

FUNCTION:

- The lightest jersey in our history at only 6oz (size L)
- "Rizer" Flow design allows 2 jerseys to match a single pant
- Extended tail with cooling mesh
- Silicone print on tail to keep your jersey tucked in
- Micro cuff decreases restriction

RIZER PANT

SIZES: Adult 28-40

FEATURES:

- Reduced weight - our lightest Hardwear pant!
- 360 degree adjustable belt keeps pants in place
- Extra long leather heat shield
- Wide accordion knees, sized for knee braces
- Seat padding for extra comfort
- Triple stitched in critical areas for durability
- Lightweight protective rubber patches
- Stretch spandex panels
- Ergonomic pre-bent and padded knee area
- Heavy duty but lightweight denier fabrics
- 1 Hardwear pant matches 2 Hardwear jersey colorways.
Buy one or buy them both and have 2 different looks for a fraction of the price!



JUSTIN HILL

HARDWEAR

RIZER





HARDWEAR JERSEY

Graphic: Color	Part No.	S	M	L	XL	2X
RIZER: Black/Yellow	004H-1	02	03	04	05	06
RIZER: Black/White	004H-2	02	03	04	05	06



RIZER | BLACK/YELLOW



RIZER | BLACK/WHITE



RIZER | BLACK



RIZER | BLACK

HARDWEAR PANT 040H-1

Graphic: Color	28	30	32	34	36	38	40
RIZER: Black	28	30	32	34	36	38	40



ALEX RAY

HARDWEAR

RIZER





HARDWEAR JERSEY

Graphic: Color	Part No.	S	M	L	XL	2X
RIZER: Blue/Neon Yellow	004H-0**	02	03	04	05	06
RIZER: Blue/Red	004H-3**	02	03	04	05	06

HARDWEAR PANT 040H-0**

Graphic: Color	28	30	32	34	36	38	40
RIZER: Blue	28	30	32	34	36	38	40



RIZER | BLUE/RED



RIZER | BLUE/NEON YELLOW



RIZER | BLUE



RIZER | BLUE



DEVEN RAPER

HARDWEAR

RIZER





HARDWEAR JERSEY

Graphic: Color	Part No.	S	M	L	XL	2X
RIZER: Gray/Mint	004H-4**	02	03	04	05	06
RIZER: Gray/Orange	004H-5**	02	03	04	05	06

HARDWEAR PANT 040H-2**

Graphic: Color	28	30	32	34	36	38	40
RIZER: Gray	28	30	32	34	36	38	40



RIZER | GRAY/ORANGE



RIZER | GRAY/MINT



RIZER | GRAY



RIZER | GRAY

STREAMLINED & LIGHTWEIGHT

The O'Neal Mayhem-Lite line is built to be bold while remaining lightweight and breathable. For 2019, the Mayhem-Lite Line introduces the all-new Hexx which features an athletic fit with microfiber 4-way stretch fabric. The Mayhem-Lite Hexx incorporates new features such as an infinity neck and cuff design and lightweight fabrics with bold, contemporary graphics to give riders a fresh, feature-packed kit that is sure to stand up moto after moto.





INFINITY

|→| INFINITY NECK AND CUFF DESIGN



SILICONE

|→| EXTENDED TAIL WITH CLEAR SILICONE



QUICK DRY

|→| QUICK DRY JERSEY MATERIALS



STRETCH

|→| MICRO FIBER 4-WAY STRETCH FABRIC



DOUBLE
SNAP
RATCHET

|→| DOUBLE SNAP & RATCHET SYSTEM



LEATHER HEAT SHIELD

|→| LEATHER HEAT SHIELD

HEXX JERSEY

SIZES: Adult S-XXL

FIT: Athletic Fitted Style. Slim Fit body with tighter arms.
Raglan Cut

FEATURES:

- Jersey weight 8oz (size L)
- Lightweight Microfiber 4-way stretch fabric body with athletic style fitted 4-way stretch sleeves
- Extended tail
- Sublimated graphics that won't fade
- Tagless neck design

FUNCTION:

- Infinity neck & collar cuff design for ultimate comfort and performance
- Clear silicone printing on the tail to help keep jersey tucked in
- Four-way stretch for added comfort and ease.
- Microfiber fabric makes better moisture wicking and cooling properties
- Breathable fabric equipped with a fast-dry feature provides extra ventilation when sweating.

HEXX PANT

SIZES: Adult 28-42

FEATURES:

- Streamlined and lightweight design for the serious racer
- No rubber thigh patches for reduced weight and increased mobility
- Durable denier fabrics with triple stitching in critical areas
- Leather heat shield
- Reinforced and adjustable elastic waist system with a ratchet strap for a precise fit
- Double snaps at waist closure, reinforced with hook and loop to stay secure and keep the zipper in its place
- More durable, wear resistant panels on: seat, inside of legs, and knees
- Lighter weight, more breathable panels, positioned away from bike contact points
- Stretch panels in key points on: front, back, and knees for great freedom of movement
- Vented mesh liner
- Ergonomically correct, pre-bent and padded knee area
- Tapered lower leg to prevent bunching in boot



HEXX | BLACK



HEXX | NEON YELLOW



HEXX | ORANGE



HEXX | WHITE

MAYHEM-LITE JERSEY

Graphic: Color	Part No.	S	M	L	XL	2X
HEXX: Black	003M-1**	02	03	04	05	06
HEXX: Neon Yellow	003M-2**	02	03	04	05	06
HEXX: Red	003M-3**	02	03	04	05	06
HEXX: White	003M-4**	02	03	04	05	06
HEXX: Orange	003M-5**	02	03	04	05	06

MAYHEM-LITE PANT

Graphic: Color	Part No.	28	30	32	34	36	38	40	42
HEXX: Black	030M-1**	28	30	32	34	36	38	40	42
HEXX: Neon Yellow	030M-2**	28	30	32	34	36	38	40	42
HEXX: Red	030M-3**	28	30	32	34	36	38	40	42
HEXX: White	030M-4**	28	30	32	34	36	38	40	42
HEXX: Orange	030M-5**	28	30	32	34	36	38	40	42



JUSTIN HILL

MAYHEM

HEXX

STREAMLINED & LIGHTWEIGHT

For the new Mayhem-Lite Ambush, We combined Pro-Lite materials with all-new microfiber 4-way stretch fabric and put it all in an athletic cut for the performance-driven athlete. By incorporating new features such as an infinity neck and cuff design with quick-dry fabrics and a double snap and ratchet system, the feature-packed Mayhem Lite Ambush is sure to perform moto after moto.



The logo for 'INFINITY' is written in a bold, sans-serif font. The letter 'Y' is replaced by a white infinity symbol.

|→| INFINITY NECK AND CUFF DESIGN

The word 'SILICONE' is written in a bold, sans-serif font. The letters are white and set against a dark, spiderweb-like graphic.

|→| EXTENDED TAIL WITH CLEAR SILICONE

The logo for 'QUICK DRY' features a stylized white graphic of a water droplet with an upward-pointing arrow above it. Below the graphic, the words 'QUICK DRY' are written in a bold, sans-serif font.

|→| QUICK DRY JERSEY MATERIALS

The word 'PRO-LITE' is written in a bold, italicized, sans-serif font with a white outline.

|→| LIGHTWEIGHT PERFORMANCE FABRIC

The words 'DOUBLE SNAP & RATCHET' are written in a bold, italicized, sans-serif font with a white outline.

|→| DOUBLE SNAP & RATCHET SYSTEM

The logo for 'LEATHER HEAT SHIELD' features a white shield with a stylized 'L' inside, surrounded by three stars and lightning bolts.

|→| LEATHER HEAT SHIELD

AMBUSH JERSEY

SIZES: Adult S-XXL

FIT: Athletic Fitted Style. Slim Fit body with tighter arms. Set-In Cut

FEATURES:

- Jersey weight 7.4oz (size L)
- 'Pro-Lite' Performance Fabric with athletic style fitted 4 way stretch sleeves
- Extended tail and Tagless neck design
- Sublimated graphics that won't fade

FUNCTION:

- Infinity neck & collar cuff design for ultimate comfort and performance
- Clear silicone printing on the tail to help keep jersey tucked in
- Four-way stretch for additional comfort and ease
- Breathable fabric equipped with a fast dry feature to provide extra ventilation after sweating.

AMBUSH PANT

SIZES: Adult 28-42

FEATURES:

- Streamlined and lightweight design for the serious racer
- No rubber thigh patches for reduced weight and increased mobility
- Durable denier fabrics with triple stitching in critical areas
- Leather heat shield
- Reinforced and adjustable elastic waist system
- Double snaps at waist closure, reinforced with a ratchet strap for a precise fit
- More durable, wear-resistant panels on the seat, inside of legs, and knees
- Lighter weight, more breathable panels, positioned away from bike contact points
- Stretch panels in key points on front, back, and knees for great freedom of movement
- Vented mesh liner
- Ergonomically correct, pre-bent and padded knee area
- Tapered lower leg to prevent bunching in boot



AMBUSH | NEON YELLOW



AMBUSH | ORANGE

MAYHEM-LITE JERSEY

Graphic: Color	Part No.	S	M	L	XL	2X
AMBUSH: Orange	003M-6**	02	03	04	05	06
AMBUSH: Neon Yellow	003M-7**	02	03	04	05	06

MAYHEM-LITE PANT

Graphic: Color	Part No.	28	30	32	34	36	38	40	42
AMBUSH: Orange	030M-6**	28	30	32	34	36	38	40	42
AMBUSH: Neon Yellow	030M-7**	28	30	32	34	36	38	40	42



ALEX RAY

MAYHEM

AMBUSH

MAYHEM-LITE JERSEY 0029-1**

Graphic: Color S M L XL 2X

CRANK: Multi 02 03 04 05 06

SIZES: Adult S-XXL

FEATURES:

- Streamlined and lightweight design for the serious racer
- Jersey weight 8.5oz (size L)
- Multiple panel construction for an ergonomically correct cut and fit
- Sublimated graphics that won't fade
- Extended tail
- Clear silicone printing on lower back to help keep jersey tucked in

MAYHEM-LITE PANT 0123-1**

Graphic: Color 28 30 32 34 36 38 40 42

CRANK: Multi 28 30 32 34 36 38 40 42

SIZES: Adult 28-42

FEATURES:

- Streamlined and lightweight design for the serious racer
- No rubber thigh patches for reduced weight and increased mobility
- Durable denier fabrics with triple stitching in critical areas
- Leather heat shield
- Reinforced and adjustable elastic waist system with hook-and-loop closure for a precise fit
- Double snaps at waist closure, reinforced with hook and loop to stay secure and keep the zipper in its place
- More durable, wear-resistant panels on the seat, inside of legs, and knees
- Lighter weight, more breathable panels, positioned away from bike contact points
- Stretch panels in key points on front, back, and knees for great freedom of movement
- Vented mesh liner
- Ergonomically correct, pre-bent and padded knee area
- Tapered lower leg to prevent bunching in boot



MAYHEM

CRANK

O'NEAL ELEMENT

PROVEN TECHNOLOGY

The O'NEAL Element line is made with a roomy, comfortable fit that is sure to please everyone in the family. It's durable, wear-resistant panels, tagless design, and cuffless pant ensure the O'NEAL Element is streamlined and ready for riding. Featuring a more extensive array of sizes and colors than most gear lines, the O'NEAL Element truly has something for everybody.



O'NEAL ELEMENT



|→| BREATHABLE, MOISTURE-WICKING FABRICS



|→| EXTENDED TAIL FOR SECURE TUCK IN



|→| TAGLESS FOR COMFORT



|→| LIGHTWEIGHT WITH WEAR-RESISTANT PANELS



|→| ELASTIC WAIST WITH RATCHET SYSTEM



|→| PROTECTIVE RUBBER PATCHES

designed in California

2019

O'NEAL ELEMENT JERSEY

SIZES: Adult S-XXL

FIT: Relaxed fit for increased comfort and flexibility.
Raglan Cut

FEATURES:

- Jersey weight 9.3oz (size L)
- Extended tail
- Sublimated graphics that won't fade
- Sewn-in elbow padding
- V-Neck collar
- Tagless neck design

FUNCTION:

- Breathable, moisture-wicking fabrics
- Extended tail that keeps jersey tucked in

O'NEAL ELEMENT PANT

SIZES: Adult 28-42

FEATURES:

- Heavy duty but lightweight denier fabrics provide the perfect combination of comfort and protection while riding
- More durable, wear-resistant panels on the seat, inside of legs, and knees
- Lighter weight, more breathable panels, positioned away from bike contact points
- Stretch panels in key points on the front, back, and knees of pants for great freedom-of-movement
- Elastic waist with adjustable ratchet closure system for a secure and snug fit
- Protective rubber patches for extra protection when crashing
- Tapered legs to prevent boot bunching
- Fully lined for added comfort
- Removable, internal, EVA foam hip protectors



SHRED | BLUE



SHRED | BLACK



SHRED | RED

O'NEAL ELEMENT JERSEY

Graphic: Color	Part No.	S	M	L	XL	2X
SHRED: Red	001E-5**	02	03	04	05	06
SHRED: Blue	001E-6**	02	03	04	05	06
SHRED: Black	001E-8**	02	03	04	05	06

O'NEAL ELEMENT PANT

Graphic: Color	Part No.	28	30	32	34	36	38	40	42
SHRED: Red	010E-5**	28	30	32	34	36	38	40	42
SHRED: Blue	010E-6**	28	30	32	34	36	38	40	42
SHRED: Black	010E-8**	28	30	32	34	36	38	40	42



O'NEAL

SHRED



RACEWEAR | WHITE



RACEWEAR | BLUE



RACEWEAR | BLACK

O'NEAL ELEMENT JERSEY

Graphic: Color	Part No.	S	M	L	XL	2X	3X	4X
RACEWEAR: Blue	001E-0**	02	03	04	05	06	-	-
RACEWEAR: Black	001E-1**	02	03	04	05	06	07	08
RACEWEAR: Neon Yellow	001E-2**	02	03	04	05	06	-	-
RACEWEAR: White	001E-3**	02	03	04	05	06	-	-

O'NEAL ELEMENT PANT

Graphic: Color	Part No.	28	30	32	34	36	38	40	42	44	46	48	50	52
RACEWEAR: Blue	010E-0**	28	30	32	34	36	38	40	42	-	-	-	-	-
RACEWEAR: Black	010E-1**	28	30	32	34	36	38	40	42	44	46	48	50	52
RACEWEAR: Neon Yellow	010E-2**	28	30	32	34	36	38	40	42	-	-	-	-	-
RACEWEAR: White	010E-3**	28	30	32	34	36	38	40	42	-	-	-	-	-



RACEWEAR / NEON YELLOW



DEVEN RAPER

O'NEAL

RACEWEAR



ATTACK | BLACK/Hi-VIZ



AFTERBURNER | BLUE/RED



VILLAIN | NEON YELLOW

O'NEAL ELEMENT JERSEY

Graphic: Color	Part No.	S	M	L	XL	2X
VILLAIN: Neon Yellow	001E-9**	02	03	04	05	06
VILLAIN: Gray	001E-9**	12	13	14	15	16
ATTACK: Black/Hi-Viz	0008-8**	02	03	04	05	06
AFTERBURNER: Blue/Red	0028-8**	12	13	14	15	16

O'NEAL ELEMENT PANT

Graphic: Color	Part No.	28	30	32	34	36	38	40	42
VILLAIN: Neon Yellow	010E-9**	28	30	32	34	36	38	40	42
VILLAIN: Gray	010E-9**	58	60	62	64	66	68	70	72
ATTACK: Black/Hi-Viz	0108-8**	28	30	32	34	36	38	40	42
AFTERBURNER: Blue/Red	0128-8**	58	60	62	64	66	68	70	72



O'NEAL

VILLAIN



O'NEAL

CLASSIC | BLACK



O'NEAL ELEMENT JERSEY 001E-0

Graphic: Color	S	M	L	XL	2X	3X	4X
CLASSIC: Black	2C	3C	4C	5C	6C	7C	8C

O'NEAL ELEMENT PANT 010E-0

Graphic: Color	28	30	32	34	36	38	40	42
CLASSIC: Black	28C	30C	32C	34C	36C	38C	40C	42C

CLASSIC | BLACK



O'NEAL
WOMEN'S FIT



DEMOLITION | BLACK/PINK

SHRED | PINK

CLASSIC | BLACK

APOCALYPSE | BLACK

O'NEAL ELEMENT JERSEY 001E-***

Graphic: Color	S	M	L	XL	2X
WMN CLASSIC: Black	12C	13C	14C	15C	16C
SHRED: Black/Pink	702	703	704	705	706

O'NEAL ELEMENT PANT 010E-****

Graphic: Color	1/2	3/4	5/6	7/8	9/10	11/12	13/14
WMN CLASSIC: Black	127C	128C	130C	132C	134C	136C	138C
SHRED: Black/Pink	727	728	730	732	734	736	738

DEMOLITION JERSEY 0085-0**

Graphic: Color	S	M	L	XL
DEMOLITION: Black/Pink	22	23	24	25

SIZES: Adult S-XL

FEATURES:

- Made of 100% combed heavyweight cotton

APOCALYPSE PANT 0134-3**

Graphic: Color	1/2	3/4	5/6	7/8	9/10	11/12	13/14
APOCALYPSE: Black	01	03	05	07	09	11	13

SIZES: Adult 1/2-13/14

FEATURES:

- Over-the-boot style pants that easily zip-off into shorts
- Adjustable waist system with hook-and-loop closure for a precise fit
- Two zipper pockets for secure storage
- Two jeans style front pockets
- Heavy-duty denier fabrics for added durability
- Strategic stretch panels for comfort and mobility
- Inner leg panel for heat resistance

MIX & MATCH WITH ANY PANT

The O'Neal Threat Jersey was designed for maximum comfort and flexibility, making it the go-to choice for the weekend warrior or avid racer. Mix and match the Threat Jersey with either a Hardwear, Mayhem or O'NEAL Element pant to create your own unique look.





THREAT | TEAL



THREAT | GRAY



THREAT | NEON YELLOW



THREAT | ORANGE



designed in California

2019

THREAT JERSEY 005T-***

Graphic: Color	S	M	L	XL	2X
THREAT: Gray	102	103	104	105	106
THREAT: Orange	202	203	204	205	206
THREAT: White	302	303	304	305	306
THREAT: Teal	402	403	404	405	406
THREAT: Neon Yellow	502	503	504	505	506

SIZES: Adult S-XXL

FIT: Relaxed fit for increased comfort and flexibility.
Raglan Cut

FEATURES:

- Jersey weight 8oz (size L)
- Extended tail
- Sublimated graphics that won't fade
- Multi-panel construction.
- Tagless neck design

FUNCTION:

- Breathable, moisture-wicking fabrics
- Silicone print on tail to keep your jersey tucked in
- Versatile graphics match multiple pant designs



BAJA

JACKET



BAJA | BLACK

SIZES: Adult S-XXL

FEATURES:

- Windproof, water-repellent shell
- Width adjustment in collar for added comfort
- Protector pockets on shoulder and elbow to insert impact foam
- Waterproof front zipper plus 9 water-resistant pockets
- Size adjustable and completely removable sleeves
- Reflective patches and Vent zipper
- Adjustment straps for neck brace
- Document pocket on sleeve

BAJA JACKET 1104-1**

Item	S	M	L	XL	2XL
Baja Jacket	02	03	04	05	06

DEMOLITION JERSEY 0085-0**

Graphic: Color	S	M	L	XL	2X
Demolition: Black	12	13	14	15	16

SIZES: Adult S-XXL

FEATURES:

- Made of 100% combed heavyweight cotton



DEMOLITION | BLACK

APOCALYPSE PANT 0134-3**

Graphic: Color	28	30	32	34	36	38	40	42	44	46	48	50
APOCALYPSE: Black	28	30	32	34	36	38	40	42	44	46	48	50

SIZES: Adult 28-50

FEATURES:

- Over-the-boot style pants that easily zip off into shorts
- Adjustable waist system with hook-and-loop closure for a precise fit
- Two zipper pockets for secure storage
- Two jeans style front pockets
- Heavy-duty denier fabrics for added durability
- Strategic stretch panels for comfort and mobility
- Inner leg panel for heat resistance



APOCALYPSE | BLACK





GLOVES

*BUTCH
HARDWEAR
MAYHEM
O'NEAL ELEMENT
MATRIX*

|

BUTCH | BLACK



BUTCH GLOVE 0468-8**

Item: Color	S	M	L	XL	2XL
BUTCH: Black	08	09	10	11	12

SIZES: Adult S - 2XL (8 - 12)

FEATURES:

- Pre-shaped one-piece carbon knuckle
- Nanofront® palm for perfect grip
- 4-way stretch material on top for better flexibility
- TPR patches for added protection from branches and debris
- Seamless rollover fingertips for enhanced lever control
- Long cuff with Adjustable Hook and Loop wrist closure for secure and adjustable fit
- Stretch Lycra® side panels on fingers for added comfort and flexibility
- Ergonomic padding and stitching on palm for increased comfort and dexterity
- Pre-curved tailoring for the best fit possible

HARDWEAR | BLACK



HARDWEAR GLOVE 0400-2**

Graphic: Color	S	M	L	XL	2XL
HARDWEAR: Black	28	29	30	31	32

SIZES: Adult S - 2XL (8 - 12)

FEATURES:

- High density one piece hidden knuckle protector for maximum impact protection
- Seamless rollover fingertips for added comfort
- Silicone printing on fingertips for improved braking and control
- TPR patches for added protection from branches and debris
- Long cuff with Adjustable Hook and Loop wrist closure for secure and adjustable fit
- Stretch Lycra® side panels on fingers for added comfort and flexibility
- Ergonomic padding and stitching on palm for increased comfort and dexterity
- Pre-curved tailoring for the best fit possible



RIZER / GRAY

MAYHEM GLOVE 0385-R**

Graphic: Color	S	M	L	XL	2XL
RIZER: White	08	09	10	11	12
RIZER: Blue	18	19	20	21	22
RIZER: Gray	28	29	30	31	32

SIZES: Adult S-2XL (8-12)

FEATURES

- Silicone printing on palms and fingertips for improved grip and braking control
- Long lasting and flexible material for the perfect fit
- Lightweight design with bold, non-fade graphics
- Seamless rollover fingertips
- Synthetic leather palm with double layer thumb reinforcement
- Hook and loop adjustable wrist closure



RIZER / BLUE



RIZER / WHITE



PRECISION FIT

The Mayhem glove is the lightest of all the O'Neal gloves! This resilient glove allows for easy mobility in all types of riding and features an ultra flexible, formed palm for a long-lasting precision fit that comes in a variety of graphics.



AMBUSH / ORANGE



AMBUSH / NEON YELLOW



MAHALO / MULTI



PALMS / MULTI

MAYHEM GLOVE

Graphic: Color	Part No.	S	M	L	XL	2XL
AMBUSH: Orange	0385-A**	08	09	10	11	12
AMBUSH: Neon Yellow	0385-A**	18	19	20	21	22
HEXX: Black	0385-H**	08	09	10	11	12
PALMS: Multi	0385-7**	38	39	40	41	42
MAHALD: Multi	0385-7**	48	49	50	51	52
CRANK: Multi	0385-1**	28	29	30	31	32

SIZES: Adult S-2XL (8-12)

FEATURES

- Silicone printing on palms and finger tips for improved grip and braking control
- Long lasting and flexible material for the perfect fit
- Lightweight design with bold, non-fade graphics
- Seamless rollover fingertips
- Synthetic leather palm with double layer thumb reinforcement
- Hook and loop adjustable wrist closure



CRANK / MULTI



HEXX / BLACK



RACEWEAR | PINK



RACEWEAR | BLACK/Hi-VIZ



RACEWEAR | RED



RACEWEAR | BLACK



O'NEAL ELEMENT GLOVE

Graphic: Color	Part No.	S	M	L	XL	2XL	3XL	4XL	5XL
RACEWEAR: Black	0392-1**	08	09	10	11	12	13	14	15
RACEWEAR: Red	0392-3**	08	09	10	11	12	-	-	-
RACEWEAR: Black/Hi-Viz	0392-5**	08	09	10	11	12	-	-	-
RACEWEAR: Pink	0392-7**	06	07	08	09	10	-	-	-

SIZES: Adult S - 2XL (8 - 12)

FEATURES

- Vented mesh top for increased airflow and cooling
- TPR strips for added protection from branches and debris
- Adjustable wrist with Velcro® closure for a secure fit
- Stretch Lycra® side panels for added comfort and flexibility
- Ergonomic padding and stitching on palm for increased comfort and dexterity
- Pre-curved tailoring for the best fit possible



ICON | RED



ICON | BLACK



ICON | NEON YELLOW



ATTACK | BLACK/HI-VIZ



VILLAIN | WHITE

MATRIX GLOVE

Graphic: Color	Part No.	8	9	10	11	12
ICON: Red	0388-I**	08	09	10	11	12
ICON: Black	0388-I**	18	19	20	21	22
ICON: Neon Yellow	0388-I**	38	39	40	41	42
ATTACK: Black/Hi-Viz	0388-O**	28	29	30	31	32
VILLAIN: White	0388-V**	08	09	10	11	12

SIZES: Adult S - 2XL (8 - 12)

FEATURES

- Lightweight, uncomplicated design for superb feel and comfort while riding
- Simple design for great freedom-of-movement
- Long lasting and flexible materials for the perfect fit
- Super lightweight design with bold non-fade graphics
- Synthetic leather palm with double layer thumb reinforcement
- Pre-curved tailoring for the best fit possible







BOOTS

RDX

O'NEAL ELEMENT

RIDER

SHORTY

SOCKS

|

RDX 2.2

ONE STEP ABOVE

The RDX 2.2 comes complete with safety and comfort features that are second to none! Constructed with a Full Tilt RDX Pivot system, the 2.2 allows for the natural flexibility of your feet and lower legs all while maintaining rigid lateral form. Each buckle on the RDX is constructed of alloy aluminum and features a double pin locking system for a secure closure every time you ride. The soles of your feet are covered with a full, "Army Rubber" bonded sole carrying an interior full steel shank for added rigidity, protection and strength. Comfort is kept key as you slip into the RDX. Ergonomically placed interior gel aided by foam pillow ankle support keeps your feet firmly in place without pinching, binding or causing discomfort. The RDX features removable and replaceable parts including the sole, straps, buckles, footbed and upper body so that you can rebuild or replace portions of your boot if need be.

The RDX 2.2 - Where Engineering, design, and comfort come together in perfect form!



RDX 2.2



|→| FULL TILT RDX PIVOT SYSTEM



|→| QUICK-DRY AIR MESH INTERIOR



|→| TEXTURED GRIP SHIFT PLATE



|→| ALUMINUM ALLOY LOCK SNAP BUCKLES



|→| SUPER-GRIP HEAT RESISTANT RUBBER PLATES



|→| ARMY RUBBER BONDED SOLE

designed in California

2019

RDX BOOT

SIZES: Adult 7-13

AVAILABLE COLORS: Black, White, Black/Hi-Viz

FEATURES

- "Full Tilt RDX Pivot System" allows maximum forward and rear motion
- Adjustable shin plate accommodates larger calf sizes in 3 settings for a custom fit
- "Army Rubber" bonded sole with heavy duty adhesive and a hidden reinforced lock stitch
- 4 Aluminum Alloy double pin and "Lock Snap" buckles
- 3 piece super grip heat resistant rubber plates, for constant contact with the bike
- Wrap around Gel and Latex foam interior ankle support
- Extended length steel shank
- Slim toe box height for the perfect shift
- Dual compound rubber/plastic for extra flex at the bottom of the shin plate
- Replacement parts: straps, buckles, rubber sole, footbed insert, boot upper body and service kit are available





RDX | BLACK



RDX | WHITE





RDX

V2.2

RDX | BLACK/Hi-VIZ



RDX 2.2 BOOTS

Item: Color	Part No.	07	08	09	10	10.5	11	12	13
RDX 2.2: Black	0328-1**	17	18	19	20	30	21	22	23
RDX 2.2: White	0328-4**	17	18	19	20	30	21	22	23
RDX 2.2: Black/Hi-Viz	0328-7**	17	18	19	20	30	21	22	23

RMX BOOTS 0333-1**

Item	7	8	9	10	11	12	13	14	15
RMX	07	08	09	10	11	12	13	14	15

SIZES: Adult 7-15

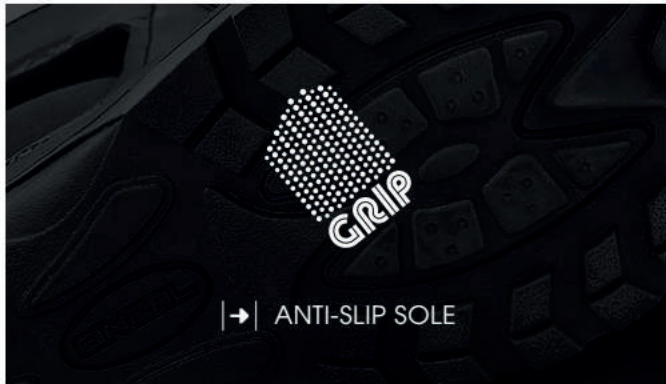
FEATURES:

- Optimum comfort, flexibility and stability
- Internal protection for your ankle, front of underfoot and gear shift zone
- Anatomically shaped heel cup and ankle padding for perfect fit
- Technical microfiber upper
- Air mesh liner for improved cooling & ventilation
- Anatomically shaped ankle padding
- High grip rubber sole with anti-slip insert
- Replaceable metal quick-action buckles for a precision action
- Nylon inner sole with steel shank
- Removable footbed with anti-perspiration treatment
- Replacement parts available

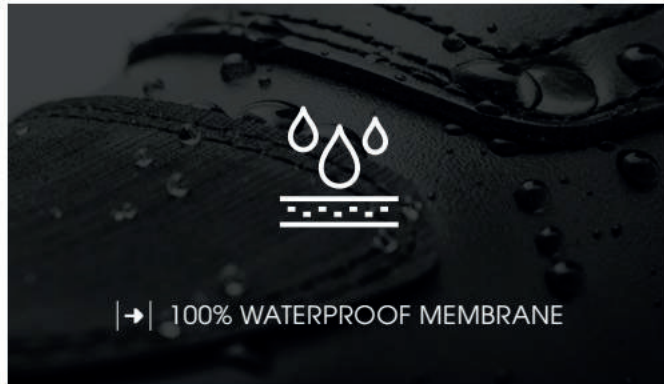


RMX | BLACK

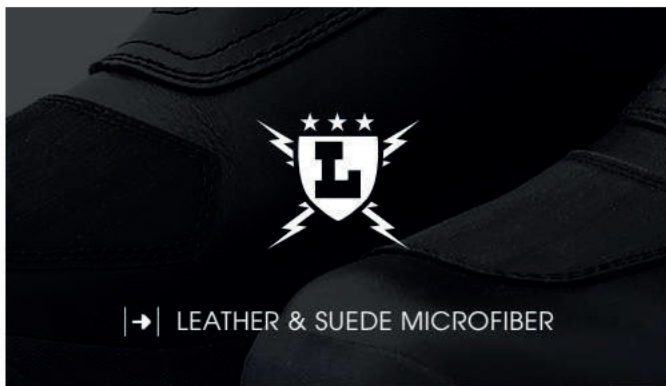




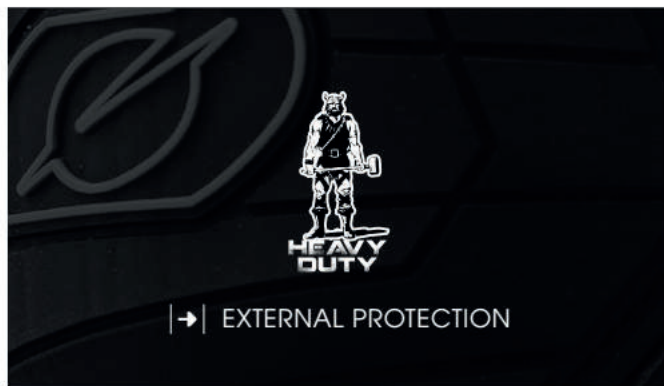
|→| ANTI-SLIP SOLE



|→| 100% WATERPROOF MEMBRANE



|→| LEATHER & SUEDE MICROFIBER



|→| EXTERNAL PROTECTION



SIERRA WP | BLACK

SIERRA WP BOOTS 0345-1**

Item	7	8	9	10	11	12	13
SIERRA WP	07	08	09	10	11	12	13

SIZES: Adult 7-13

FEATURES:

- Durable waterproof adventure touring boot
- Optimum comfort, flexibility, and stability
- Internal and external protection for your ankle and gear shift zone
- Anatomically shaped heel cup
- Upper made by full grain leather and suede microfiber
- Lined with a 100% waterproof yet breathable membrane
- High grip anti-slip rubber sole
- Nylon inner sole with steel shank
- Removable footbed with anti-perspiration treatment

O'NEAL ELEMENT

GET IN THE ELEMENTS

The all-new O'NEAL Element boot is updated for 2019 with sleek, modern styling that comes in four great colors. This boot is packed with protective features and now comes with a durable, long-lasting stitched sole so you can get into the elements with confidence.



O'NEAL ELEMENT | BLACK

O'NEAL ELEMENT



ONEAL

ELEMENT BLACK

O'NEAL ELEMENT BOOTS

Color	Part No.	7	8	9	10	11	12	13	14	15
BLACK	0332-1**	07	08	09	10	11	12	13	14	15
WHITE	0332-2**	07	08	09	10	11	12	13	14	15
RED	0332-3**	07	08	09	10	11	12	13	14	15
GRAY	0332-4**	07	08	09	10	11	12	13	14	15

SIZES: Adult 7-15

AVAILABLE COLORS: Black, White, Gray, Red

FEATURES:

- Durable microfiber/synthetic upper
- Pre-curved injection molded shin plate
- Injection molded protector/toe guard
- Full adjustable four buckle closure system
- Generous heel support and padding for added comfort
- Goodyear welt sole construction
- Metal toe cap
- Rubber outsole with a metal shank

O'NEAL ELEMENT | RED



O'NEAL ELEMENT | GRAY



O'NEAL ELEMENT | WHITE



RIDER

FOR EVERY RIDER

The O'Neal Rider Boots deliver excellent protection and performance thanks to the metal shank reinforcements paired with the injection molded plastic protective plates. With sizes ranging all the way from pee wee to adult size 15, the Rider boot is made to fit the whole family.



RIDER / BLACK

RIDER

RIDER / PINK



RIDER BOOTS

Item: Color	Part No.	7	8	9	10	11	12	13	14	15
RIDER: Black	0325-1**	07	08	09	10	11	12	13	14	15

Item: Color	Part No.	5	6	7	8	9	10	11	12
WMNS RIDER: Pink	0325-7**	05	06	07	08	09	10	11	12

SIZES: Adult 7-15, Women's 5-12

FEATURES:

- Injection molded plastic plates protect against impacts
- Metal shank insert reinforces the shape of the boot and adds support
- Easy to operate, Snap-Lock adjustable four buckle closure system
- Durable Goodyear welt sole is properly balanced with no unstable rocking
- Metal toe guard to protect the sole against delaminating
- Moderate grip sole is great for track, trail and ATV riders
- Air mesh interior, generous heel support and cushioned insole for extra comfort
- Synthetic leather heat shield to prevent heat damage
- Rear pull tab for extra leverage
- Replacement straps and buckles are available

SHORTY / BLACK



RIDER SHORTY BOOTS 0344-0**

Item	7	8	9	10	11	12	13	14	15
RIDER SHORTY	07	08	09	10	11	12	13	14	15

SIZES: Adult 7-15

FEATURES:

- Injection molded plastic plates protect against impacts
- Metal shank insert reinforces the shape of the boot and adds support
- Easy to operate, Snap-Lock adjustable two buckle closure system
- Durable Goodyear welt sole is properly balanced with no unstable rocking
- Metal toe guard to protect the sole against delaminating
- Moderate grip sole is great for track, trail and ATV riders
- Air mesh interior, generous heel support and cushioned insole for extra comfort
- Replacement straps and buckles are available

CORP | BLACK



CORP | BLUE



CORP | RED



USA | MULTI



CROSSBONES | BLACK



X-RAY | BLACK



EAGLE | BLACK



V-TWIN | BLACK



MX SOCKS

Graphic: Color

Part No.

SIZES: Adult One-Size

X-RAY

0356-602

FEATURES - PRINT SOCKS:

CROSSBONES

0356-609

- Knee-high sock height
- Moisture wicking materials
- Thick knit in heel and sole for comfort and shock absorption
- High-density materials for durability
- Ribbed arch and ankle for a secure fit
- Composition: 80% Acrylic, 15% Polyamide, 5% Spandex

BOMBER

0356-703

WINGMAN

0356-734

WOODS CAMO

0356-718

V-TWIN

0356-720

EAGLE

0356-721

USA

0356-729

HUNTER

0356-733

CORP: BLACK

0356-736

CORP: RED

0356-737

CORP: BLUE

0356-738

BOMBER / GREEN



WINGMAN / BLACK



HUNTER / YELLOW



WOODS / CAMO



VICTORY | BLACK



O'LOGO | BLUE



CANDY | BLACK/WHITE



CANDY | BLACK/ORANGE



VILLAIN | WHITE



VILLAIN | GRAY



XOXO | BLACK/PINK



WILD | BLACK/WHITE



MX SOCKS

Graphic: Color	Part No.
VICTORY	0356-713
XOXO	0356-604
WILD	0356-704
VILLAIN: White	0356-742
VILLAIN: Gray	0356-743
CANDY: Black/White	0356-750
CANDY: Black/Orange	0356-751
O'LOGO: Blue	0356-752
PRO XL	0356-311

SIZES: Adult One-Size

FEATURES - PRINT SOCKS:

- Knee-high sock height
- Moisture wicking materials
- Thick knit in heel and sole for comfort and shock absorption
- High density materials for durability
- Ribbed arch and ankle for a secure fit
- Composition: 80% Acrylic, 15% Polyamide, 5% Spandex

FEATURES - PRO XL:

- High height designed for riders wearing knee braces or knee cups
- Leg constructed of lightweight materials with mesh back for added venting
- Silicone strip to keep your sock in place while riding
- Ribbed arch and ankle for a secure fit



PRO-XL | BLACK



PRO MX

SOCKS



ALEX RAY



PROTECTION

HOLESHOT
UNDERDOG III
PRO III + PUMPGUN
O'NEAL ELEMENT
TRAIL

|



SMASH ROOST GUARD 0115-2**

Item	S/M	L/XL
SMASH GUARD	02	04

SIZES: Adult S/M & L/XL

FEATURES:

- Neck brace compatible
- EVA foam protection in critical impact zones
- Vented mesh vest for maximum airflow while riding



HOLESHOT PROTECTOR 1285-004

1285-004

SIZES: Adult M/L

FEATURES:

- Neck brace compatible
- Articulated back protector for increased mobility
- Airprene® shoulder padding for comfort
- Integrated waist closure system
- Vented foam padding to keep you cool
- One size fits most



UNDERDOG III PROTECTOR 0571-4**

Graphic: Color S M L XL 2X

UNDERDOG III: Black 02 03 04 05 06

SIZES: Adult S-XXL

FEATURES:

- Constructed from high-impact resistant, injection molded plastic, and IPX® material designed to protect your shoulders, elbows, forearms, chest, and back
- IPX® back protector extends from the base of the neck to lower back; helping ensure complete protection where you need it most
- 9 areas of adjustment for the perfect fit
- Back protector zips off for easy cleaning
- Extensive mesh venting helps keep you cool while riding
- Adjustable elastic kidney belt with Hook and Loop closure for a secure fit
- Neck brace compatible





PRO III KNEE GUARD

0251-201

SIZES: Adult One-Size

FEATURES:

- Comfortable knee-shin pad to use under your riding pants
- Short shins for perfect fit inside boots
- Tough plastic knee cap and shin guard
- Articulated joint between knee and shin provides excellent movement while riding
- Adjustable elastic straps with Hook and Loop closures provide a secure, snug, and comfortable fit



PUMPGUN KNEE GUARD

0256-206

SIZES: Adult One-Size

FEATURES:

- Lightweight and well-ventilated knee protection
- Innovative, hinged knee pivot design, moves with you rather than restricting movement
- High impact resistant, injection molded plastic
- The design ensures the protection stays in place while riding and during crashes
- Pre-Formed foam inner is molded to the shape of the knee for added comfort and protection
- The inner knee bolt is counter-sunk to prevent damage to the bike
- All rivets and bolts are covered with padding
- 3 demo-friendly elastic and Velcro straps provide a secure and snug fit
- CE Certified

O'NEAL ELEMENT KIDNEY BELT

0739-1**

Item	M/L	XL
KIDNEY BELT	00	01

SIZES: Adult M/L & XL

FEATURES:

- Provides lower back support when riding
- Gentle compression helps protect lower abdomen and internal organs
- Gives an extra layer of coverage in the event of a crash
- Ergonomic design provides maximum lumbar support combined with comfort to the sides and back
- Adjusted with 2 external Velcro® closure straps to fit a wide range of sizes



TRAIL BASE LAYERS

Item: Color	Part No.	S	M	L	XL	2XL
TRAIL SHORT: Black/Lime	1288-0**	02	03	04	05	06
TRAIL PANT: Black/Lime	1288-1**	02	03	04	05	06

SIZES: Adult S-XXL

FEATURES - SHORT:

- High-density, EVA foam for added protection in the key impact zones of hips, thighs, and tailbone
- Pads are ergonomically designed to be as comfortable and unobtrusive as possible when worn under riding shorts and pants
- Flat double seams, elasticated waist and legs, and Spandex mesh legs provide a great fit for comfortable riding
- Coolmax® chamois inset for added comfort

FEATURES - PANT:

- Comfortable form fitting protector long pants
- High density EVA padding for protection in hip, thigh and tailbone area
- Ergonomically designed pads
- Flat overlock elastic stitched seams
- Crotch insert Coolmax® chamois for additional comfort
- Silicon tape on inner ankle area for stability







YOUTH

HELMETS

BOOTS

GLOVES

RIDING GEAR

PROTECTION

|

MAYHEM

WELCOME TO MAYHEM FOR YOUTH

The O'Neal Mayhem-Lite line is built to be bold while remaining lightweight and breathable. Working with our professional athletes, the Mayhem-Lite line has been streamlined over the years into a class of its own. Now it's available in youth which means even the youngest rider can wear the gear of O'Neal's professional motocross athletes. While mom and dad can rest assured knowing the Mayhem Lite gear set will stand up to the harshest of conditions moto after moto.





MAYHEM

HEXX NEON YELLOW

MAYHEM-LITE JERSEY

Graphic: Color	Part No.	S	M	L	XL
HEXX: Neon Yellow	003M-2**	12	13	14	15
HEXX: Red	003M-3**	12	13	14	15

SIZES: Youth S-XXL

FIT: Athletic Fitted Style. Slim Fit body with tighter arms. Raglan Cut

FEATURES:

- Jersey weight 8oz (size L)
- Lightweight Microfiber 4-way stretch fabric body with athletic style fitted 4-way stretch sleeves
- Extended tail
- Sublimated graphics that won't fade
- Tagless neck design

FUNCTION:

- Infinity neck & collar cuff design for ultimate comfort and performance
- Clear silicone printing on the tail to help keep jersey tucked in
- Four-way stretch for added comfort and ease.
- Microfiber fabric makes better moisture wicking and cooling properties
- Breathable fabric equipped with a fast-dry feature provides extra ventilation when sweating.

MAYHEM-LITE PANT

Graphic: Color	Part No.	5/6	8/10	12/14	Y28
HEXX: Neon Yellow	030M-2**	22	24	26	27
HEXX: Red	030M-3**	22	24	26	27

SIZES: Youth 5/6-Y28

FEATURES:

- Streamlined and lightweight design for the serious racer
- No rubber thigh patches for reduced weight and increased mobility
- Durable denier fabrics with triple stitching in critical areas
- Leather heat shield
- Reinforced and adjustable elastic waist system with a ratchet strap for a precise fit
- Double snaps at waist closure, reinforced with hook and loop to stay secure and keep the zipper in its place
- More durable, wear resistant panels on: seat, inside of legs, and knees
- Lighter weight, more breathable panels, positioned away from bike contact points
- Stretch panels in key points on: front, back, and knees for great freedom of movement
- Vented mesh liner
- Ergonomically correct, pre-bent and padded knee area
- Tapered lower leg to prevent bunching in boot



AFTERBURNER | BLUE/RED



ATTACK | BLACK/Hi-VIZ



VILLAIN | NEON YELLOW





O'NEAL ELEMENT JERSEY

Graphic: Color	Part No.	XS	S	M	L	XL
RACEWEAR: Black	002E-1**	01	02	03	04	05
SHRED: Red	002E-5**	-	02	03	04	05
SHRED: Pink	002E-7**	-	02	03	04	05
VILLAIN: Neon Yellow	002E-9**	-	02	03	04	05
ATTACK: Black/Hi-Viz	0006-8**	-	02	03	04	05
AFTERBURNER: Blue/Red	0029-8**	-	12	13	14	15

SIZES: Youth XS-XL

FIT: Relaxed fit for increased comfort and flexibility.
Raglan Cut

FEATURES:

- Jersey weight 9.3oz (size L)
- Extended tail that keeps jersey tucked in
- Sublimated graphics that won't fade
- Sewn-in elbow padding
- V-Neck collar
- Tagless neck design
- Breathable, moisture-wicking fabrics

O'NEAL ELEMENT PANT

Graphic: Color	Part No.	2/3	4/5	5/6	8/10	12/14	Y28
RACEWEAR: Black	010E-1**	18	20	22	24	26	27
SHRED: Red	010E-5**	-	-	22	24	26	-
SHRED: Pink	010E-7**	-	-	22	24	26	27
VILLAIN: Neon Yellow	010E-9**	-	-	22	24	26	27
ATTACK: Black/Hi-Viz	0108-8**	-	-	22	24	26	27
AFTERBURNER: Blue/Red	0128-8**	-	-	52	54	56	57

SIZES: Youth 2/3-8/10 (Racewear Black 2/3-y28)

FEATURES:

- Heavy duty but lightweight denier fabrics provide the perfect combination of comfort and protection while riding
- More durable, wear-resistant panels on the seat, inside of legs, and knees
- Lighter weight, more breathable panels, positioned away from bike contact points
- Stretch panels in key points on the front, back, and knees of pants for great freedom-of-movement
- Elastic waist with adjustable ratchet closure system for a secure and snug fit
- Protective rubber patches for extra protection when crashing
- Tapered legs to prevent boot bunching
- Fully lined for added comfort
- Removable, internal, EVA foam hip protectors

3 SERIES HELMET 0623-***

Graphic: Color	S	M	L	XL
FLAT Black	072	073	074	075
VILLAIN: White	V12	V13	V14	V15

SIZES: Youth: S - XXL

FEATURES:

- Shell is constructed with durable Polycarbonate
- Shell weight (size large): 1100grams (±50)
- Ultra-plush removable/washable padded liner keeps you cool and dry by wicking away sweat
- Adjustable visor design
- Intake and exhaust vents for ventilation and cooling
- Durable multi-colored clear coated graphics
- Replacement parts available
- Meets DOT, ECE 22-05 and AS/NZS safety standards



3 SERIES | FLAT BLACK



3 SERIES | VILLAIN

YOUTH GLOVES

Graphic: Color	Part No.	XS	S	M	L	XL
MATRIX ATTACK: Black/Hi-Viz	0388-0**	23	24	25	26	27
MATRIX VILLAIN: White	0388-V**	28	29	30	31	32
O'NEAL ELEMENT: Black	0392-1**	01	03	05	06	07
O'NEAL ELEMENT: Red	0392-3**	01	03	05	06	07
O'NEAL ELEMENT: Black/Hi-Viz	0392-5**	01	03	05	06	07
O'NEAL ELEMENT: Black/Pink	0392-7**	01	03	05	-	-

SIZES: Youth XS-XL (1/2 - 7)

FEATURES - MATRIX:

- Lightweight, uncomplicated design for superb feel and comfort while riding
- Simple design for great freedom-of-movement
- Long lasting and flexible materials for the perfect fit
- Super lightweight design with bold non-fade graphics
- Synthetic leather palm with double layer thumb reinforcement
- Pre-curved tailoring for the best fit possible

FEATURES - O'NEAL ELEMENT:

- Vented mesh top for increased airflow and cooling
- TPR strips for added protection from branches and debris
- Adjustable wrist with Velcro® closure for a secure fit
- Stretch Lycra® side panels for added comfort and flexibility
- Ergonomic padding and stitching on palm for increased comfort and dexterity
- Pre-curved tailoring for the best fit possible



MATRIX | VILLAIN



MATRIX | ATTACK



O'NEAL ELEMENT | PINK



O'NEAL ELEMENT | BLK/Hi-VIZ



O'NEAL ELEMENT | BLACK



O'NEAL ELEMENT | RED

RIDER BOOT

Item: Color	Part No.	1	2	3	4	5	6
YOUTH: Black	0325-1**	01	02	03	04	05	06
YOUTH: Black/Pink	0325-7**	01	02	03	04	-	-

Item: Color	Part No.	K10	K11	K12	K13
PEEWEE: Black	0325-1**	97	98	99	00
PEEWEE: Black/Pink	0325-7**	-	-	99	-

SIZES: Youth: 1-6, PeeWee: K10-13

FEATURES:

- Injection molded plastic plates protect against impacts
- Metal shank insert reinforces the shape of the boot and adds support
- Easy to operate, Snap-Lock adjustable four buckle closure system
- Durable Goodyear welt sole is properly balanced with no unstable rocking
- Metal toe guard to protect the sole against delaminating
- Moderate grip sole is great for track, trail and ATV riders
- Air mesh interior, generous heel support and cushioned insole for extra comfort
- Synthetic leather heat shield to prevent heat damage
- Rear pull tab for extra leverage
- Replacement straps and buckles are available



RIDER | BLACK



RIDER | BLACK/PINK

MX SOCKS

Graphic	Part No.
X-RAY	0356-723
BOMBER	0356-724
XOXO	0356-722

SIZES: One-size

FEATURES:

- Knee-high sock height
- Moisture wicking materials
- Thick knit in heel and sole for comfort and shock absorption
- High density materials for durability
- Ribbed arch and ankle for a secure fit
- Composition: 80% Acrylic, 15% Polyamide, 5% Spandex



XRAY | BLACK



BOMBER | GREEN



XOXO | PINK



UNDERDOG II | BLACK



UNDERDOG II ARMOR

0571-3**

Item	S	M	L
UNDERDOG II	02	03	04

SIZES: Youth S-L

FEATURES:

- Constructed from high impact injection molded plastic to protect the shoulders, elbows, forearms, chest, and back
- Articulating back protection covers spine, without inhibiting movement
- Removeable back, elbow and forearms
- Adjustable elastic kidney belt with Velcro® closure for a secure fit
- Extensive mesh and padded foam venting to help keep cool
- 9 areas of adjustment for the perfect fit

O'NEAL ELEMENT KIDNEY BELT

0733-102

SIZES: Youth One-Size

FEATURES:

- Provides lower back support when riding
- Gentle compression helps protect lower abdomen and internal organs
- Gives an extra layer of coverage in the event of a crash
- Ergonomic design provides maximum lumbar support combined with comfort to the sides and back
- Adjusted with 2 external Velcro® closures straps to fit a wide range of sizes



KIDNEY BELT | BLACK

DEMOLITION JERSEY 0085-0**

Item	S	M	L	XL
DEMOLITION JERSEY	32	33	34	35

SIZES: Youth S-XL

FEATURES:

- Made of 100% combed heavy weight cotton



DEMOLITION | HE-VIZ



PUMPGUN | BLACK

PUMPGUN KNEE GUARD

0256-207

SIZES: Youth One-Size

FEATURES:

- Lightweight and well-ventilated knee protection
- Innovative, hinged knee pivot design, moves with you rather than restricting movement
- High impact resistant, injection molded plastic
- The design ensures the protection stays in place while riding and during crashes
- Pre-Formed foam inner is molded to the shape of the knee for added comfort and protection
- The inner knee bolt is counter-sunk to prevent damage to the bike
- All rivets and bolts are covered with padding
- Three demo-friendly elastic and Velcro straps provide a secure and snug fit
- CE Certified

PEEWEE PROTECTION

Type	Part No.	S/M	L/XL
CHEST PROTECTOR	0251-3**	00	01
KNEE GUARD	0251-312	-	-
ELBOW GUARD	0251-3**	10	11

SIZES: PeeWee - S/M & L/XL
Knee Guard - One-Size

FEATURES - CHEST PROTECTOR:

- Lightweight flexible and comfortable foam chassis design
- Injected molded plastic shoulder pads
- TPR Chest and Back protection for supreme protection
- Adjustable straps for the perfect fit
- S/M - fits ages 2-5yrs. Approximately 35-40in tall, 28-40lbs
- L/XL - fits ages 5-7yrs. Approximately 40-50in tall, 38-55lbs

FEATURES - KNEE GUARD:

- Lightweight flexible and comfortable foam chassis design
- Injected molded plastic shoulder pads
- Adjustable straps for the perfect fit

FEATURES - ELBOW GUARD:

- Lightweight flexible and comfortable foam chassis design
- Injected molded plastic shoulder pads
- Adjustable straps for the perfect fit

PEEWEE | CHEST



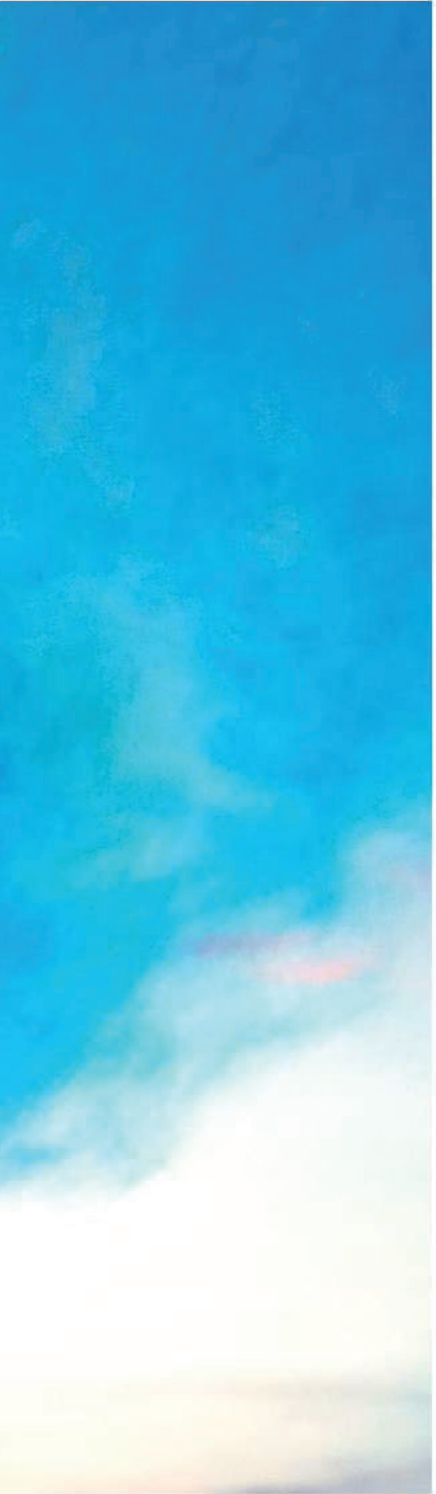
PEEWEE | KNEE



PEEWEE | ELBOW







ACCESSORIES

GEAR BAGS

STICKERS

RACE EQUIP'D

GRIPS

|



WAIST TOOL BAG

1372-100

SIZES: One Size

FEATURES:

- Comfortable and padded waist tool bag with adjustable stretch belt
- Velcro closure plus buckle closure for a secure fit
- Numerous pockets: 1 main zipper pocket equipped with straps inside, inside zipper pocket, 2 side pockets, one zipper pocket within the belt
- Total length 43 inches (unstretched)
- Maximum width 6 inches

TX-8000 | BLACK



GEAR BAGS

Item	Part No.
TX-2000	1320-100
TX-8000	1315-200

SIZES: 8000 cubic in., 2000 cubic in.

FEATURES - TX-8000:

- Dimensions: 34 in x 15 in x 17 in
- One main compartment, two end boot compartments, and 1 side pocket
- Durable 6000 Polyester
- Detachable padded shoulder strap
- Heavy-duty zippers and bold graphics

FEATURES - TX-2000:

- Dimensions: 22 in x 9 in x 11 in
- One main compartment, and 2 side pocket
- Durable 3000 Polyester
- Detachable padded shoulder strap
- Heavy-duty zippers and bold graphics

TX-2000 | BLACK



16" | BLACK

O'NEAL

5" | BLACK

O'NEAL

ENJOY.RIDE

TRACK STICKER

Item	Part No.
TRACK STICKER 16"	5010-201
TRACK STICKER 5"	5010-022



STADIUM BLANKET

1115-004

SIZE: 54" x 78"

FEATURES:

- Large, thick fleece stadium blanket that's perfect for a night at the races

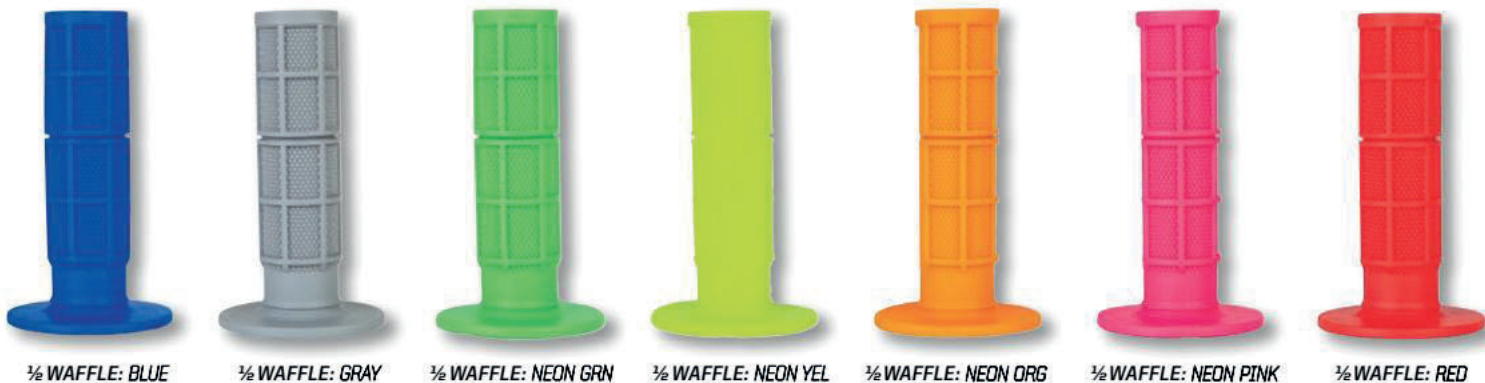
ATTACK UMBRELLA

3069-102

FEATURES:

- Starting gate approved!
- Large 46" diameter when open
- Ergonomic grip
- Storage sleeve
- 37" height





MX GRIPS

Type: Color

WAFFLE: Blue
 WAFFLE: Black
 WAFFLE: Gray
 WAFFLE: Red
 WAFFLE: Neon Green
 WAFFLE: Neon Pink
 WAFFLE: Neon Yellow
 WAFFLE: Neon Orange
 DIAMOND: Blue
 DIAMOND: Black
 DIAMOND: Gray
 DIAMOND: Red
 DIAMOND: Neon Green
 DIAMOND: Neon Pink
 DIAMOND: Neon Yellow
 DIAMOND: Neon Orange
 D2 WAFFLE: Black/Blue
 D2 WAFFLE: Black/Gray
 D2 WAFFLE: Black/Orange
 D2 WAFFLE: Black/Red
 ATV: Black
 OPEN DIAMOND: Black
 OPEN WAFFLE: Black

Part No.

7160-700
 7160-701
 7160-702
 7160-703
 7160-704
 7160-705
 7160-706
 7160-707
 7160-200
 7160-201
 7160-202
 7160-203
 7160-204
 7160-205
 7160-206
 7160-207
 7160-800
 7160-801
 7160-802
 7160-803
 7160-900
 7160-901
 7160-902

TYPES: Full Diamond, Half Waffle, D2 Half Waffle, Open-Ended Half Waffle, ATV Half Waffle

FEATURES - 1/2 WAFFLE:

- Built-in groove for safety wire
- Medium compound material
- Half waffle pattern
- Closed end
- Sold in pairs
- For use on twist throttles

FEATURES - FULL DIAMOND:

- Medium compound material
- Diamond pattern
- Closed end
- Sold in pairs
- For use on twist throttles

FEATURES - 1/2 WAFFLE D2:

- Dual compound material
- Waffle pattern
- Closed end
- Sold in pairs
- For use on twist throttles



WAFFLE D2: BLK/BLU

WAFFLE D2: BLK/ORG

WAFFLE D2: BLK/RED

FEATURES - 1/2 WAFFLE ATV:

- Smaller diameter flange
- Medium compound material
- Waffle pattern
- Closed end
- Sold in pairs

FEATURES - OPEN ENDED:

- Handguard ready open-ended grip design
- Medium compound material
- Waffle pattern
- Sold in pairs
- For use on twist throttles



GRIPS

MX & ATV



WILL

1

ENJOY the RIDE. GNEAL

Autotrader 

SUZUKI



JERSEY PRINTING

Our exclusive custom One-Piece jersey Name & Number lettering and Sponsor logos once only available to Pro Riders, are now available to everyone! Working with our top riders, such as Justin Hill and Phil Nicoletti, we have perfected our printing materials to maximize visibility while maintaining a durable print that will go the distance through every moto and every wash! You can now get your jersey lettering and sponsor logos applied to your jersey and done by a professional O'Neal designer to get that factory look!

We offer two fonts (Rally & Depot) in either Black or White allowing you to customize the look of your jersey. Can't decide which color will look best? No problem, you can allow a professional O'Neal Designer to choose which color will look best on your particular jersey.

Want to represent your personal sponsors on the track in style? We are here to help you get that professional look! O'Neal artists have hundreds of major motocross and bicycle company logos on file ready for your jersey. If you should need a custom logo (IE Non Moto Company, Local Shop Logo) an O'Neal Designer can convert your logo into a printable jersey transfer.



Step 1. Choose your jersey | Step 2. Add your name and number | Step 3. Choose a font & color | Step 4. Add your sponsor logos

SMITH
123

ABCDEFGHIJKLMNOPQRSTUVWXYZ
0123456789

RALLY

SMITH
123

ABCDEFGHIJKLMNOPQRSTUVWXYZ
0123456789

DEPOT

SPONSORS

Choose from hundreds of sponsors already on file or have an O'Neal designer help you add your own logo.





**SURVEYORS OF DIRT
MFG.**

NOTOXX

MCMXCIV CO. MMXVI

BEING DIRTY SINCE '94



TORMENT | BLACK

SIZES: Adult XS-XXL

FEATURES:

- Lightweight poly-injected construction
- Shell weight (Size L) 1400 grams (±50)
- Ultra-plush, removable & washable comfort liner
- Full shell venting for improved aerodynamics and overall cooling
- State of the art designed aerodynamic shell and visor
- Side goggle traction pad keeps goggle strap securely in place
- Meets or exceeds DOT & ECE 22-05 safety standards
- Replacement liners, cheek pads and visors available



TORMENT | BLACK



PBX | MULTI

MOTO XXX HELMET 0622-5**

Graphic: Color	XS	S	M	L	XL	2X
TORMENT: Black	01	02	03	04	05	06

MOTO XXX HELMET 0622-4**

Graphic: Color	XS	S	M	L	XL	2X
PBX: Multi	01	02	03	04	05	06

XXX

ORIGINAL

FEATURES - JERSEY:

- Athletic fit
- slim cuffs and collar
- 3" tail to help keep jersey tucked in

FEATURES - JERSEY VENTED:

- Athletic fit
- slim cuffs and collar
- 3" tail to help keep jersey tucked in
- Large hole mesh for extensive cooling



ORIGINAL



ORIGINAL | BLACK/WHITE



ORIGINAL | BLACK/HI-VIZ



ORIGINAL | WHITE VENTED

ORIGINAL JERSEY

Graphic: Color	Part No.	S	M	L	XL	2X
ORIGINAL: Black/White	0041-1**	02	03	04	05	06
ORIGINAL: Black/Hi-Viz	0041-2**	02	03	04	05	06
ORIGINAL: White Vented	0041-4**	02	03	04	05	06

ORIGINAL PANT 0154-1**

Graphic: Color	28	30	32	34	36	38
ORIGINAL: Black/White	28	30	32	34	36	38

SIZES: Adult 28-38

FEATURES - PANT:

- Heavy duty denier fabrics
- 360 degree adjustable belt keeps pants in place
- Lightweight protective patches
- Extra long leather heat shield
- Wide accordion knees sized for knee braces
- Triple stitched in critical areas for durability
- Stretch spandex for added flex



ORIGINAL | PANT BLACK

MOTO XXX HATS

Graphic: Color	Part No.
OG CHARACTER	1025-001
NINETY FOUR	1025-002
INTERNATIONAL	1025-003

SIZE: One size fits most

FEATURES - HAT:

- Snapback with woven patch detailing

HAT / OG CHARACTER



HAT / INTERNATIONAL



HAT / NINETY FOUR



MOTO XXX WALLET

1025-200

FEATURES:

- Water-resistenteant, tear-resistant, slim design wallet mad of Tyvek® material to withstand years of punishment and abuse
- 2 large pockets for cash and receipts
- 2 credit card pockets that can hold multiple cards
- 2 business card pockets

WALLET / MOTO XXX



MAYHEM GLOVE

Graphic: Color	Part No.	S	M	L	XL	2XL
ORIGINALS: Black	039X-0**	08	09	10	11	12
CIRCUIT: Black	039X-1**	08	09	10	11	12

SIZES: Adult S - 2XL (8 - 12)

FEATURES:

- Silicone printing on palms and finger tips for improved grip and braking control
- Long lasting and flexible material for the perfect fit
- Lightweight design with bold, non-fade graphics
- Seamless rollover fingertips
- Synthetic leather palm with double layer thumb reinforcement
- Hook and loop adjustable wrist closure

ORIGINAL / BLACK



CIRCUIT / BLACK



MOTO XXX 5" STICKER

5010-024

SIZE: 5" PVC Sticker

STICKER / 5"







TEE | HARD PACK



TEE | WHEELIE



TEE | SPEED DEMON



TEE | SKULLY



TEE | GROM



TEE | SERVICE



TEE | MOTOMAN

MOTO XXX APPAREL

Style: Graphic	Part No.	S	M	L	XL	2X
TEE: Speed Demon	1024-0**	72	73	74	75	76
TEE: Hard Pack	1024-2**	72	73	74	75	76
TEE: Wheelie	1024-3**	22	23	24	25	26
TEE: Gasket	1024-3**	52	53	54	55	56
TEE: Grom	1024-3**	62	63	64	65	66
TEE: Skully	1024-3**	92	93	94	95	96
TEE: Sudz	1024-6**	72	73	74	75	76
TEE: Wrench	1024-4**	22	23	24	25	26
TEE: Moto Monster	1024-6**	12	13	14	15	16
TEE: Merica	1024-6**	22	23	24	25	26
TEE: Service	1024-6**	42	43	44	45	46
TEE: Dirt Goods	1024-6**	62	63	64	65	66
TEE: Motoman	1024-7**	12	13	14	15	16
TEE: Dice	1024-7**	22	23	24	25	26
CREW: Dirt Goods	1024-6**	82	83	84	85	86
CREW: Service	1024-6**	92	93	94	95	96

SIZES: Adult XS-XXL

FEATURES - TEE:

- 100% Ringspun Cotton
- Tagless neck label design
- Soft touch screen printed graphics

FEATURES - CREW:

- Cotton blend with pull on closure
- 50% cotton, 50% polyester
- Pull-resistant air jet yarn
- Set in sleeves
- 1x1 ribbed collar, cuffs and waistband with spandex



TEE | GASKET



TEE | SUDZ



TEE | WRENCH



TEE | 'MERICA



FRONT



TEE | MOTO MONSTER
(BACK)



FRONT



TEE | DIRT GOODS
(BACK)



TEE | DICE



FRONT



CREW | DIRT GOODS
(BACK)



FRONT



CREW | SERVICE
(BACK)







FOUR T-SHIRT 4373-1**

Graphic: Color M L XL 2XL

PATRIOT: Black 06 07 08 09



FOUR GLOVES 4373-1**

Color 6 7 8 9 10 11 12

Black 06 07 08 09 10 11 12

**ATV
ONLY**

FOUR



ATV RACING APPAREL





CYCLING

HELMETS
RIDING GEAR
GLOVES
SHOES
PROTECTION

|

DEVELOPED TO COMPETE

The Warp full-face helmet is the result of years of product development and testing with top DH and Enduro riders such as Greg Minnaar. The lightweight Warp helmet is ideal for Downhill and Enduro riding. With its larger vents and moisture-wicking liner, the full face Warp helmet will provide temperature control on even the most demanding hills and trails.



WARP HELMET 0615-6

Graphic: Color	XS	S	M	L	XL
BLOCKER: Black/Yellow	01	02	03	04	05

SIZES: Adult XS-XXL

FEATURES:

- Lightweight ABS construction (1050g)
- Several large air vents for excellent ventilation and temperature control
- Wide field of vision and high visor for improved focus while riding
- The Fidlock® magnetic buckle system allows for single-handed fastening and release
- Perspiration-absorbing and removable, washable inner liner
- Exceeds CPSC and EN1078 safety standard for bicycle helmets





WARP

HELMET



WARP HELMET 0615C-7

Graphic: Color

XS S M L XL

CRANK: Multi

01 02 03 04 05

WARP HELMET 0615M-0**

Graphic: Color

XS S M L XL

SOLID: Matte Black

01 02 03 04 05

READY FOR ANYTHING

The Fury RL features a detachable GoPro® mount and uses Fidlock® magnetic buckle for single-hand release even with gloves on. Features like those on the Fury RL mean you're always ready for downhill action and adventure.



FURY RL HELMET 0499-H

Graphic: Color	XS	S	M	L	XL
HYBRID: Red	31	32	33	34	35

SIZES: Adult XS-XXL

FEATURES:

- Detachable GoPro® Mount
- Lightweight (950g) ABS Shell
- Multiple Vents and channels for increased airflow
- Sweat-absorbing and removable, washable inner liner
- Fidlock® magnetic buckle for easy, single-handed fastening and release
- Height adjustable visor
- Durable multi-colored clear coated graphics
- Exceeds CPSC and EN1078 safety standard for bicycle helmets





FURY RL

HELMET



FURY RL HELMET 0499-7

Graphic: Color	XS	S	M	L	XL
WARHAWK: Black/Green	21	22	23	24	25

FURY RL HELMET 0499-0**

Graphic: Color	XS	S	M	L	XL
SOLID: Matte Black	01	02	03	04	05



BACKFLIP RL2 HELMET 0500-Z

Graphic: Color XS S M L XL
 ZOMBIE: Black/Neon Yellow 01 02 03 04 05

BACKFLIP RL2 HELMET 0500M-O

Graphic: Color XS S M L XL
 SOLID: Matte Black 01 02 03 04 05

SIZES: Adult XS-XXL

FEATURES:

- Detachable GoPro® Mount
- Lightweight (965g ±50) ABS Shell
- Multiple Vents and channels for increased airflow
- Sweat-absorbing and removable, washable inner liner
- Fidlock® magnetic buckle for easy, single-handed fastening and release
- Height adjustable visor
- Exceeds CPSC and EN1078 safety standard for bicycle helmets



JORDI BAGO



PIKE ENDURO HELMET 0009-0

<i>Color</i>	<i>S/M</i>	<i>L/XL</i>
<i>Black/Yellow</i>	10	11

SIZES: Adult XS-XXL

FEATURES:

- Endura/ Trail/ Freeride helmet with In-mold Technology for increased impact protection and energy dispersion
- Polycarbonate shell, EPS liner, Coolmax® pads
- Lightweight construction
- Extended coverage at the back of the head



PIKE ENDURO HELMET 0009-0

<i>Color</i>	<i>S/M</i>	<i>L/XL</i>
<i>White/Blue</i>	30	31

- Equipped with Fidlock® Magnetic Buckle
- Unique 'Dual-Flow' System with over-sized vents for improved and constant air circulation inside the helmet
- 3D Multi-Positioning System for perfect adjustment in 3 directions: up-down, front-rear, open-close
- Exceeds CPSC safety standard for bicycle helmets

MINNAAR TESTED AND APPROVED

The O'NEAL Element FR gear is improved from one season to the next, refined over the years with input from none other than Greg Minnaar, the racer with more World Cup wins and podiums than any other male rider. With bold colors and race ready design the O'NEAL Element FR is your go-to for Free Ride gear.



GREG MINNAAR | 1



HYBRID / RED



HYBRID / BLACK

O'NEAL ELEMENT FR JERSEY

Graphic: Color	Part No.	S	M	L	XL	2XL
HYBRID: Black	1048H-1**	02	03	04	05	06
HYBRID: Red	1048H-3**	02	03	04	05	06

FEATURES:

- Improved comfort while riding with new: more-breathable, faster-wicking, quicker-drying fabric
- Secure back pocket with zipper
- Shorter front and drop tail for a great fit when on the bike
- Mesh panel under arms for increased ventilation
- Flat-locked seams for added comfort
- V-neck collar
- Matching colors with Pin It Shorts

O'NEAL ELEMENT FR SHORT

Graphic: Color	Part No.	28	30	32	34	36	38
HYBRID: Black	1078H-1**	28	30	32	34	36	38
HYBRID: Red	1078H-3**	28	30	32	34	36	38

FEATURES:

- Incredible comfort and freedom-of-movement with a seamless crotch and 4-way stretch, outer material that is lightweight, breathable, quick-drying, and fast-wicking
- Two front zipper pockets for handy storage
- Two front zip leg vents and mesh panels
- Mesh lining for added comfort
- Improved durability with tough material panels on the crotch and inside of legs
- Ratchet closure, and slip resistant inner waistband, with rubber strips for a secure fit
- Two front zip leg vents and mesh panels
- Handy hang tab on back of waist for drying and storage
- Useful integrated goggle and sunglasses wipe cloth
- Compatible with O'Neal inner chamois shorts (available separately)



PIN IT | BLACK/GRAY



PIN IT | RED/BLACK

PIN IT JERSEY 0087-0**

Item: Color	S	M	L	XL	2XL
PIN IT: Red/Black	22	23	24	25	26
PIN IT: Black/Gray	32	33	34	35	36

SIZES: Adult S-2XL

FEATURES:

- Improved comfort while riding with lighter, faster-wicking, quick drying, and more breathable fabrics
- Hidden, secure back pocket with zipper
- Round Collar
- Shorter front and drop tail for a great fit when on the bike
- Mesh panel under arms for increased ventilation
- Flat-locked seams for added comfort
- Laser-cut ventilation holes
- Built-in goggle/sunglasses wipe
- Matching colors with Pin It Short and Rockstacker Short



PIN IT | RED

PIN IT SHORT 1075-0**

Item: Color	28	30	32	34	36	38
PIN IT: Red	68	70	72	74	76	78
PIN IT: Black/Hi-Viz	48	50	52	54	56	58

SIZES: Adult 28-38

FEATURES:

- Our lightest weight shorts
- Active cut with shorter leg length
- Breathable, quick-drying, and fast-wicking material
- 3 pockets: 2 x side zipper, 1 x zipper rear waist
- Laser-cut ventilation holes on the inside of thighs
- Pre-curved leg tailoring and high back waistband for great on-bike fit and comfort
- Popper waist closure with side Velcro® adjustment for secure snug fit
- Compatible with O'Neal inner chamois shorts (available separately)



ALL MOUNTAIN SHORT

Style: Color	Part No.	28	30	32	34	36	38
MUD: Black	0177-0**	28	30	32	34	36	38

SIZES: Adult 28-38

FEATURES:

- Mid-length all-weather waterproof shorts
- 100% Waterproof seat with critically taped seams on seat and crotch
- Raised back for optimal wet weather coverage
- Stretch panel on top of seat/ waist for improved freedom-of-movement
- Popper waist closure with side Velcro® adjustment for secure snug fit
- 3 pockets: 2 x zipper side, 1 x welded seam
- Waterproof (100%), breathable material, with critically taped seams on seat and crotch
- Compatible with O'Neal inner chamois shorts (available separately)

ALL MOUNTAIN | MUD



ROCKSTACKER SHORT

item: Color	Part No.	28	30	32	34	36	38
ROCKSTACKER: Black	1071-7**	28	30	32	34	36	38
ROCKSTACKER: Red	1071-8**	28	30	32	34	36	38
ROCKSTACKER: Blue	1071-9**	28	30	32	34	36	38

SIZES: Adult 28-38

FEATURES:

- Extended over-the-knee cut to cover the top of pads when riding
- Adjustable waist construction with high back for secure and snug fit
- Air vent system integrated into seams to control cooling while riding
- High back waistband for a comfortable fit while riding
- Stretch comfort zones on front, seat and in the crotch area
- Two side pockets
- Colors match both O'NEAL Element FR and Pin It Jerseys
- Fast-wicking, quick-drying 4-way stretch material
- Compatible with O'Neal inner chamois shorts (available separately)
- Popper waist closure with side Velcro adjustment for secure snug fit
- Laser-cut ventilation holes on the inside of thighs
- Pre-curved leg tailoring and high back waistband for great on-bike fit

LEGACY

MINNAAR TESTED AND APPROVED

The Legacy Pant was developed in collaboration with Greg Minnaar. He and all our World Cup riders tested the pant during the 2017 and 2018 seasons to refine and improve the design prior to release. As a result, the Legacy pant offers just the right balance of freedom-of-movement, lightweight and breathable fabrics, and durability to create the perfect race and downhill pant.



GREG MINNAAR | 1

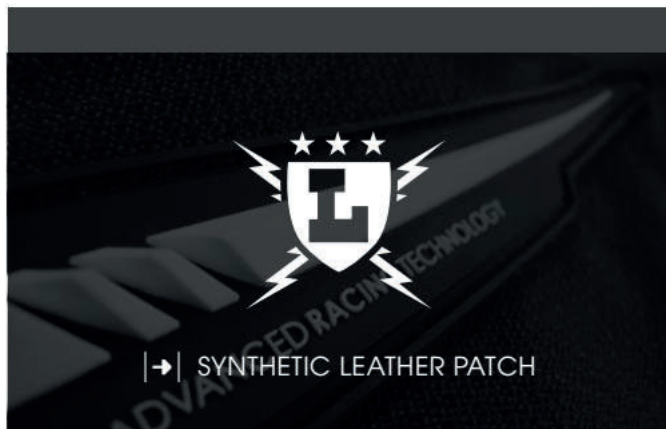
LEGACY



|→| LIGHTWEIGHT 4-WAY STRETCH FABRICS



|→| ABRASION RESISTANT SEAT PANELS



|→| SYNTHETIC LEATHER PATCH



|→| LASER-CUT VENTILATION

designed in California

2019



LEGACY PANT 0185-1

Graphic: Color 28 30 32 34 36 38

LEGACY: Black 28 30 32 34 36 38

SIZES: Adult 28-38

FEATURES:

- Designed in collaboration with 3-time UCI DH World Champion Greg Minnaar, specifically for his UCI DH World Cup campaign
- Lightweight, breathable 4-way stretch fast-wicking, quick-drying main fabric for ultimate comfort
- Stretch panels on thighs, top of seat/ waist and ankles for improved freedom-of-movement
- Abrasion-resistant seat panels
- Amara synthetic leather chainring-side abrasion-resistant patch
- Padded back waistband for added comfort
- Pre-curved leg tailoring and high back waistband for great on-bike fit and comfort
- Laser-cut ventilation holes on the inside of thighs
- Stream-lined design for aerodynamics while riding/ racing DH
- Double-popper waist closure with side Velcro® adjustment for secure snug fit



HEXX | BLACK

HEXX | RED

HEXX | ORANGE

HEXX | WHITE

MAYHEM-LITE HEXX JERSEY

Graphic: Color	Part No.	S	M	L	XL	2X
HEXX: Black	003M-1**	02	03	04	05	06
HEXX: Neon Yellow	003M-2**	02	03	04	05	06
HEXX: Red	003M-3**	02	03	04	05	06
HEXX: White	003M-4**	02	03	04	05	06
HEXX: Orange	003M-5**	02	03	04	05	06

MAYHEM-LITE HEXX PANT

Graphic: Color	Part No.	28	30	32	34	36	38	40	42
HEXX: Black	030M-1**	28	30	32	34	36	38	40	42
HEXX: Neon Yellow	030M-2**	28	30	32	34	36	38	40	42
HEXX: Red	030M-3**	28	30	32	34	36	38	40	42
HEXX: White	030M-4**	28	30	32	34	36	38	40	42
HEXX: Orange	030M-5**	28	30	32	34	36	38	40	42



HEXX

NEON YELLOW



HEXX / NEON YELLOW

HEXX JERSEY

SIZES: Adult S-XXL

FIT: Athletic Fitted Style. Slim Fit body with tighter arms. Raglan Cut

FEATURES:

- Jersey weight 8oz (size L)
- Lightweight Microfiber 4-way stretch fabric body with athletic style fitted 4-way stretch sleeves
- Extended tail
- Sublimated graphics that won't fade
- Tagless neck design

FUNCTION:

- Infinity neck & collar cuff design for ultimate comfort and performance
- Clear silicone printing on the tail to help keep jersey tucked in
- Four-way stretch for added comfort and ease.
- Microfiber fabric makes better moisture wicking and cooling properties
- Breathable fabric equipped with a fast-dry feature provides extra ventilation when sweating.

HEXX PANT

SIZES: Adult 28-42

FEATURES:

- Streamlined and lightweight design for the serious racer
- No rubber thigh patches for reduced weight and increased mobility
- Durable denier fabrics with triple stitching in critical areas
- Leather heat shield
- Reinforced and adjustable elastic waist system with hook-and-loop closure for a precise fit
- Double snaps at waist closure, reinforced with hook and loop to stay secure and keep the zipper in its place
- More durable, wear-resistant panels on seat, inside of legs, and knees
- Lighter weight, more breathable panels, positioned away from bike contact points
- Stretch panels in key points on front, back, and knees for excellent freedom of movement
- Vented mesh liner
- Ergonomically correct, pre-bent and padded knee area
- Tapered lower leg to prevent bunching in boot

MAYHEM-LITE JERSEY 0023-1**

Graphic: Color S M L XL 2X

CRANK: Multi 02 03 04 05 06

MAYHEM-LITE PANT 0123-1**

Graphic: Color 28 30 32 34 36 38 40 42

CRANK: Multi 28 30 32 34 36 38 40 42



?/?



CRANK | MULTI



AMBUSH | NEON YELLOW



AMBUSH | ORANGE

MAYHEM-LITE AMBUSH JERSEY

Graphic: Color	Part No.	S	M	L	XL	2X
AMBUSH: Orange	003M-6**	02	03	04	05	06
AMBUSH: Neon Yellow	003M-7**	02	03	04	05	06

SIZES: Adult S-XXL

FIT: Athletic Fitted Style. Slim Fit body with tighter arms. Set-In Cut

FEATURES:

- Jersey weight 7.4oz (size L)
- 'Pro-Lite' Performance Fabric with 4-way stretch. Body with athletic style fitted 4-way stretch sleeves
- Extended tail
- Sublimated graphics that won't fade
- Tagless neck design

FUNCTION:

- Infinity neck & collar cuff design for ultimate comfort and performance
- Clear silicone printing on tail to help keep jersey tucked in
- Four-way stretch for added comfort and ease.
- Breathable fabric equips with fast-dry feature to provide extra ventilation after sweating.

MAYHEM-LITE AMBUSH PANT

Graphic: Color	Part No.	28	30	32	34	36	38	40	42
AMBUSH: Orange	030M-6**	28	30	32	34	36	38	40	42
AMBUSH: Neon Yellow	030M-7**	28	30	32	34	36	38	40	42

SIZES: Adult 28-42

FEATURES:

- Streamlined and lightweight design for the serious racer
- No rubber thigh patches for reduced weight and increased mobility
- Durable denier fabrics with triple stitching in critical areas
- Leather heat shield
- Reinforced and adjustable elastic waist system with hook-and-loop closure for a precise fit
- Double snaps at waist closure, reinforced with hook and loop to stay secure and keep the zipper in its place
- More durable, wear-resistant panels on seat, inside of legs, and knees
- Lighter weight, more breathable panels, positioned away from bike contact points
- Stretch panels in key points on front, back, and knees for excellent freedom of movement
- Vented mesh liner
- Ergonomically correct, pre-bent and padded knee area
- Tapered lower leg to prevent bunching in boot



SHRED | BLUE



SHRED | BLACK



SHRED | RED

O'NEAL ELEMENT JERSEY

Graphic: Color	Part No.	S	M	L	XL	2X
SHRED: Red	001E-5**	02	03	04	05	06
SHRED: Blue	001E-6**	02	03	04	05	06
SHRED: Black	001E-8**	02	03	04	05	06
CLASSIC: Black	001E-0**	2C	3C	4C	5C	6C

O'NEAL ELEMENT PANT

Graphic: Color	Part No.	28	30	32	34	36	38	40	42
SHRED: Red	010E-5**	28	30	32	34	36	38	40	42
SHRED: Blue	010E-6**	28	30	32	34	36	38	40	42
SHRED: Black	010E-8**	28	30	32	34	36	38	40	42
CLASSIC: Black	010E-0**	28C	30C	32C	34C	36C	38C	40C	42C



CLASSIC

BLACK



CLASSIC | BLACK

O'NEAL ELEMENT JERSEY

SIZES: Adult S-XXL

FIT: Relaxed fit for increased comfort and flexibility.
Raglan Cut

FEATURES:

- Jersey weight 9.3oz (size L)
- Extended tail
- Sublimated graphics that won't fade
- Sewn-in elbow padding
- V-Neck collar
- Tagless neck design

FUNCTION:

- Breathable, moisture-wicking fabrics
- Extended tail that keeps jersey tucked in

O'NEAL ELEMENT JERSEY

SIZES: Adult 28-42

FEATURES:

- Heavy duty but lightweight denier fabrics provide the perfect combination of comfort and protection while riding
- More durable, wear-resistant panels on seat, inside of legs, and knees
- Lighter weight, more breathable panels, positioned away from bike contact points
- Stretch panels in key points on the front, back, and knees of pants for great freedom-of-movement
- Elastic waist with adjustable ratchet closure system for a secure and snug fit
- Protective rubber patches for extra protection when crashing
- Tapered legs to prevent boot bunching
- Fully lined for added comfort
- Removable, internal, EVA foam hip protectors

O'NEAL ELEMENT JERSEY

Graphic: Color	Part No.	S	M	L	XL	2X	3X	4X
RACEWEAR: Blue	001E-0**	02	03	04	05	06	-	-
RACEWEAR: Black	001E-1**	02	03	04	05	06	07	08
RACEWEAR: Neon Yellow	001E-2**	02	03	04	05	06	-	-
RACEWEAR: White	001E-3**	02	03	04	05	06	-	-



RACEWEAR | WHITE



RACEWEAR | BLUE



RACEWEAR | BLACK



RACEWEAR | NEON YELLOW

O'NEAL ELEMENT PANT

Graphic: Color	Part No.	28	30	32	34	36	38	40	42	44	46	48	50	52
RACEWEAR: Blue	010E-0**	28	30	32	34	36	38	40	42	-	-	-	-	-
RACEWEAR: Black	010E-1**	28	30	32	34	36	38	40	42	44	46	48	50	52
RACEWEAR: Neon Yellow	010E-2**	28	30	32	34	36	38	40	42	-	-	-	-	-
RACEWEAR: White	010E-3**	28	30	32	34	36	38	40	42	-	-	-	-	-



O'NEAL ELEMENT JERSEY

Graphic: Color	Part No.	S	M	L	XL	2X
VILLAIN: Neon Yellow	001E-9**	02	03	04	05	06
VILLAIN: Gray	001E-9**	12	13	14	15	16
ATTACK: Black/Hi-Viz	0008-8**	02	03	04	05	06
AFTERBURNER: Blue/Red	0028-8**	12	13	14	15	16

O'NEAL

ELEMENT



ATTACK | BLACK/Hi-VIZ



AFTERBURNER | BLUE/RED



VILLAIN | GRAY



VILLAIN | NEON YELLOW

O'NEAL ELEMENT PANT

Graphic: Color	Part No.	28	30	32	34	36	38	40	42
VILLAIN: Neon Yellow	010E-9**	28	30	32	34	36	38	40	42
VILLAIN: Gray	010E-9**	58	60	62	64	66	68	70	72
ATTACK: Black/Hi-Viz	0108-8**	28	30	32	34	36	38	40	42
AFTERBURNER: Blue/Red	0128-8**	58	60	62	64	66	68	70	72

BUTCH / BLACK



BUTCH GLOVE 0468-8**

Item: Color	S	M	L	XL	2XL
BUTCH: Black	08	09	10	11	12

SIZES: Adult S-2XL (8-12)

FEATURES:

- Pre-shaped one-piece carbon knuckle
- Nanofront® palm for perfect grip
- 4-way stretch material on top for better flexibility
- TPR patches for added protection from branches and debris
- Seamless rollover fingertips for enhanced lever control
- Extended cuff with Adjustable Hook and Loop wrist closure for secure and adjustable fit
- Stretch Lycra® side panels on fingers for added comfort and flexibility
- Ergonomic padding and stitching on palm for increased comfort and dexterity
- Pre-curved tailoring for the best fit possible

HARDWEAR / BLACK



HARDWEAR GLOVE 0400-2**

Graphic: Color	S	M	L	XL	2XL
HARDWEAR: Black	28	29	30	31	32

SIZES: Adult S-2XL (8-12)

FEATURES:

- High density one piece hidden knuckle protector for maximum impact protection
- Seamless rollover fingertips for added comfort
- Silicone printing on fingers for improved braking and control
- TPR patches for added protection from branches and debris
- Extended cuff with Adjustable Hook and Loop wrist closure for secure and adjustable fit
- Stretch Lycra® side panels on fingers for added comfort and flexibility
- Ergonomic padding and stitching on palm for increased comfort and dexterity
- Pre-curved tailoring for the best fit possible



RIZER | GRAY



RIZER | BLUE



RIZER | WHITE



AMBUSH | ORANGE



AMBUSH | NEON YELLOW



CRANK | MULTI



PALMS | MULTI



MAHALO | MULTI



HEXX | BLACK

MAYHEM GLOVE

Graphic: Color	Part No.	S	M	L	XL	2XL
RIZER: White	0385-R**	08	09	10	11	12
RIZER: Blue	0385-R**	18	19	20	21	22
RIZER: Gray	0385-R**	28	29	30	31	32
AMBUSH: Orange	0385-A**	08	09	10	11	12
AMBUSH: Neon Yellow	0385-A**	18	19	20	21	22
HEXX: Black	0385-H**	08	09	10	11	12
PALMS: Multi	0385-7**	38	39	40	41	42
MAHALO: Multi	0385-7**	48	49	50	51	52
CRANK: Multi	0385-1**	28	29	30	31	32

SIZES: Adult S - 2XL (8 - 12)

FEATURES:

- Silicone printing on palms and fingertips for improved grip and braking control
- Long lasting and flexible material for the perfect fit
- Lightweight design with bold, non-fade graphics
- Seamless rollover fingertips
- Synthetic leather palm with double layer thumb reinforcement
- Hook and loop adjustable wrist closure

RACEWEAR | PINK



RACEWEAR | BLACK/HT-VIZ



RACEWEAR | RED



RACEWEAR | BLACK



O'NEAL ELEMENT GLOVE

Graphic: Color	Part No.	S	M	L	XL	2XL	3XL	4XL	5XL
RACEWEAR: Black	0392-1**	08	09	10	11	12	13	14	15
RACEWEAR: Red	0392-3**	08	09	10	11	12	-	-	-
RACEWEAR: Black/Hi-Viz	0392-5**	08	09	10	11	12	-	-	-
RACEWEAR: Pink	0392-7**	06	07	08	09	10	-	-	-

SIZES: Adult S - 2XL (8 - 12)

FEATURES

- Vented mesh top for increased airflow and cooling
- TPR strips for added protection from branches and debris
- Adjustable wrist with Velcro® closure for a secure fit
- Stretch Lycra® side panels for added comfort and flexibility
- Ergonomic padding and stitching on palm for increased comfort and dexterity
- Pre-curved tailoring for the best fit possible



MATRIX GLOVE

Graphic: Color	Part No.	8	9	10	11	12
ICON: Red	0388-I**	08	09	10	11	12
ICON: Black	0388-I**	18	19	20	21	22
ICON: Neon Yellow	0388-I**	38	39	40	41	42
ATTACK: Black/Hi-Viz	0388-O**	28	29	30	31	32
VILLAIN: White	0388-V**	08	09	10	11	12

SIZES: Adult S - 2XL (8 - 12)

FEATURES

- Lightweight, uncomplicated design for superb feel and comfort while riding
- Simple design for great freedom-of-movement
- Long lasting and flexible materials for the perfect fit
- Super lightweight design with bold non-fade graphics
- Synthetic leather palm with double layer thumb reinforcement
- Pre-curved tailoring for the best fit possible



ICON | NEON YELLOW



ATTACK | BLACK/Hi-VIZ



ICON | RED



VILLAIN | WHITE



ICON | BLACK

PINNED

SUPERIOR GRIP AND BALANCE

The new PINNED shoe range from O'Neal has been designed and tested by professional riders in the 2017 and 2018 UCI World Cup Down Hill series. The PINNED shoe line is built to last, packed with features and competitively priced to deliver what we believe to be the best MTB shoe collection on the market. Meet the PINNED SPD which uses a Honey Rubber® outsole and is cut to allow SPD cleats. A slightly stiffer sole gives excellent pedaling efficiency, and the skate-style design makes the Pinned SPD look great on or off the bike.



PINNED SPD | BLACK

PINNED



|→| HONEY RUBBER OUTSOLE



|→| LACE UP SYSTEM

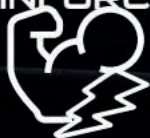


|→| SPD CLEAT COMPATIBLE



|→| STRENGTHENING NYLON SOLE INSERT

REINFORCED



|→| REINFORCED TOE CAP



|→| DURABLE PU LEATHER UPPER

designed in California

2019

PINNED SPD SHOE 321-1**

Item: Color 7 8 9 10 11 12 13

PINNED: Black 07 08 09 10 11 12 13

SIZES: Adult 7-13

FEATURES:

- SPD cleat compatible shoe
- Durable and lightweight PU upper
- Lace-up closure system for a more casual look while still giving a secure and snug fit while riding
- Nylon sole insert to increase outsole strength and improve pedaling efficiency
- O'Neal Honey Rubber® sole compound
- Removable and interchangeable footbed
- Reinforced toe cap for added protection



PINNED

SUPERIOR GRIP AND BALANCE

Our PINNED and PINNED PRO shoes share the same grippy Honey Rubber® outsole and both have tough yet comfortable uppers with reinforced toe boxes to protect against rocks and crashes. The PINNED PRO version is our 'half-cab' with a higher inner ankle giving added protection while the PINNED is offered in a standard low-cut design.



PINNED PRO | BLACK



PINNED PRO SHOE 325-1**

Item: Color	7	8	9	10	11	12	13
PINNED: Black	07	08	09	10	11	12	13

SIZES: Adult 7-13

FEATURES:

- Flat pedal riding shoe
- Ultimate balance between grip and foot repositioning with O'Neal's unique, Honey Rubber® sole
- Honeycomb sole structure for superior grip
- Lycra ankle gaiter to keep stones and soil out
- Higher cut, inner ankle design to protect against hitting your crank while pedaling
- Sole and upper shoe construction provides the perfect blend of rigidity and flexibility, for maximum pedaling efficiency and comfort
- Durable and lightweight PU upper
- Lace-up closure system for a more casual look whilst giving a secure and snug fit while riding
- Removable and interchangeable footbed
- Reinforced toe cap for added protection
- Additional side outsole stitching for reinforcement and increased durability

PINNED



PINNED PEDAL SHOE 322-1**

Item: Color	7	8	9	10	11	12	13
PINNED: Black	07	08	09	10	11	12	13

SIZES: Adult 7-13

FEATURES:

- Flat pedal riding shoe
- Ultimate balance between grip and foot repositioning with O'Neal's unique, Honey Rubber® sole
- Honeycomb sole structure for superior grip
- Sole and upper shoe construction provides the perfect blend of rigidity and flexibility, for maximum pedaling efficiency and comfort
- Durable and lightweight PU upper
- Lace-up closure system for a more casual look whilst still giving a secure and snug fit while riding
- Removable and interchangeable footbed
- Reinforced toe cap for added protection
- Additional side outsole stitching for reinforcement and increased durability

PINNED PEDAL | BLACK



SMASH ROOST GUARD 0115-2**

Color S/M L/XL
 Black 02 04

SIZES: Adult S/M & L/XL

FEATURES:

- Neck brace compatible
- EVA foam protection in critical impact zones
- Vented mesh vest for maximum airflow while riding



HOLESHOT PROTECTOR 1285-004

1285-004

SIZES: Adult M/L

FEATURES:

- Neck brace compatible
- Articulated back protector for increased mobility
- Airprene® shoulder padding for comfort
- Integrated waist closure system
- Vented foam padding to keep you cool
- One size fits most



UNDERDOG II YOUTH ARMOR

Type	Part No.	S	M	L
Underdog II	0571-3**	02	03	04

SIZES: Youth S-L

FEATURES:

- Constructed with high impact injection molded plastic to deflect dirt and debris
- Articulated back protector for increased mobility
- Removeable back, elbow, and forearms
- Adjustable elastic kidney belt with hook and loop closure
- Extensive mesh and padded foam venting to help keep cool
- Nine areas of adjustment for the perfect fit



UNDERDOG III PROTECTOR 0571-4**

Graphic: Color	S	M	L	XL	2X
UNDERDOG III: Black	02	03	04	05	06

SIZES: Adult S-XXL

FEATURES:

- Constructed from high-impact resistant, injection molded plastic, and IPX® material designed to protect your shoulders, elbows, forearms, chest, and back
- IPX® back protector extends from the base of the neck to lower back; helping ensure complete protection where you need it most
- Nine areas of adjustment for the perfect fit
- Back protector zips off for easy cleaning
- Extensive mesh venting helps keep you cool while riding
- Adjustable elastic kidney belt with Hook and Loop closure for a secure fit
- Neck brace compatible





JORDI BAGO

O'NEAL

PROTECTION

DIRT RL KNEE GUARDS

Item:	Color	Part No.	S	M	L	XL
DIRT RL:	GRAY	0277-2**	02	03	04	05

SIZES: Adult S-XL

FEATURES:

- Comfortable soft knee guard with IPX® foam protection
- Lightweight low-bulk construction
- IPX® knee protection is soft and pliable while riding, but hardens on impact
- Made from perspiration-absorbing and breathable neoprene
- Abrasion-resistant material in critical areas
- Adjustable, elastic Velcro® strap provides a secure and snug fit
- Slim enough to be worn under jeans/ pants
- CE Certified EN 1621-1



DIRT RL | GRAY

PARK FR KNEE GUARDS 0265-5**

Item:	Color	XS	S	M	L	XL	2XL
PARK FR:	Black	02	03	04	05	06	07

SIZES: Adult S-XXL

FEATURES:

- Lightweight, breathable, and comfortable
- Full-length knee and shin coverage for maximum protection
- Extended neoprene thigh sleeve for a secure fit while riding
- Plastic mesh shells for improved airflow and ventilation
- Perforated foam on sides, top, and bottom of guards deliver added protection and improved ventilation while reducing weight
- Three elastic Velcro® straps provide a secure and snug fit while riding
- Ergonomic shaping, around the calf muscles and knees, for the perfect blend of fit and comfort



PARK FR | BLACK

TRAIL BASE LAYERS

Item:	Color	Part No.	S	M	L	XL	2XL
TRAIL SHORT:	Black/Lime	1288-0**	02	03	04	05	06
TRAIL PANT:	Black/Lime	1288-1**	02	03	04	05	06

SIZES: Adult S-XXL

FEATURES - SHORT:

- High-density, EVA foam for added protection in the key impact zones of hips, thighs, and tailbone
- Pads are ergonomically designed to be as comfortable and unobtrusive as possible when worn under riding shorts and pants
- Flat double seams, elasticated waist and legs, and Spandex mesh legs provide a great fit for comfortable riding
- Coolmax® chamois inset for added comfort

FEATURES - PANT:

- Comfortable form-fitting protector long pants
- High-density EVA padding for protection in hip, thigh and tailbone area
- Ergonomically designed pads
- Flat overlock elastic stitched seams
- Crotch insert Coolmax® chamois for additional comfort
- Silicon tape on inner ankle area for stability



TRAIL SHORT | BLACK/LIME

TRAIL PANT | BLACK/LIME





AZONIC

WHEELS

PEDALS

HANDLEBARS

STEMS

ACCESSORIES

I

OUTLAW

BUILT FOR PUNISHMENT

Since 1989 Azonic has been producing some of the most durable mountain bike parts available, and the Outlaw Wheels are no exception. This welded double-wall pinned rim has a wide profile for extra strength and rigidity. It is truly built for punishment.



SAMANTHA KINGSHILL

OUTLAW

OUTLAW 650B WHEELSET

Type: Color	Part No.	142mm	150mm
WHEELSET: Black	3200-8**	65	66
WHEELSET: Blue	3200-8**	67	68
WHEELSET: Red	3200-8**	69	70
WHEELSET: Green	3200-8**	71	72
RIM ONLY: Black	3200-885	-	-

TYPES: Wheelset: 142mm, 150mm; Rim Only

FEATURES:

- Weight: 142mm 1973g (set), 150mm 1988g (set)
- 27.5" Welded Double-wall pinned rim
- 32 spoke construction for added strength and pedaling efficiency
- Hub/Brake Compatibility: 6-Bolt Disc
- Nipple Material: Sapim Alloy Secure Lock-Brass standard
- 6061-T6 Aluminum rim construction
- Front wheel converts from Q/R, 15mm & 20mm through axles
- Comes with conversion kit
- 142mm & 150mm rear wheel spacing
- Disc only
- 8/9/10/11 speed compatible
- Tubeless compatible
- XD driver compatible
- 157mm conversion kit available (pg. 137)



OUTLAW 29ER WHEEL

Type: Color	Part No.
WHEELSET: Black	3200-905
RIM ONLY: Black	3200-912

TYPES: Wheelset: 135mm; Rim Only

FEATURES:

- Weight: 2270g (set)
- Double-wall pinned rim
- 32 spoke construction for added strength and pedaling efficiency
- 6061-T6 Aluminum rim construction
- Front wheel converts from Q/R, 20mm axle adapter
- Comes with conversion kit
- 142mm rear wheel spacing
- Disc only
- 8/9 speed compatible



OUTLAW 26" WHEEL

Type: Color	Part No.	135mm	150mm
WHEELSET: Black	3200-8**	00	01
RIM ONLY: Black	3200-810	-	-

TYPES: Wheelset: 135mm, 150mm; Rim Only

FEATURES:

- Weight: 135mm 2340g (set), 150mm 2362g (set)
- Welded Double-wall pinned rim
- 32 spoke construction for added strength and pedaling efficiency
- 6061-T6 Aluminum rim construction
- Front wheel converts from Q/R, 15mm & 20mm through axles
- Comes with conversion kit
- 135mm & 150mm rear wheel spacing
- Disc only
- 8/9/10/11 speed compatible
- Tubeless compatible
- XD driver compatible
- 142mm conversion kit available (pg. 137)



RECOIL FRONT HUB

Item: Color	Part No.	32 Hole
FRONT: Black	3200-8**	14
FRONT: Red	3200-8**	15

SIZES: 32 Hole

FEATURES - FRONT HUB:

- 32 hole front hub converts from QR to 15mm and 20mm (THRU. Axle)
- Comes with QR/20mm conversion kit
- Weight: 236g
- Standard 6 bolt rotor fitting



REAR | FRONT RED



REAR | FRONT BLACK

RECOIL REAR HUB 3200-8**

Item: Color	135mm	150mm
REAR: Black	16	18
REAR: Red	17	19

SIZES: 135mm or 150mm

FEATURES - REAR HUB:

- 32 hole, 7075 Aluminum hub body
- Converts from QR to 12mm x 135mm bolt on axle
- Weight: 135mm; 430g, 150mm; 445g
- Standard 6 bolt rotor fitting



REAR | REAR BLACK



REAR | REAR RED

AXLE ADAPTOR

Size	Part No.
15mm	3200-008
20mm	3200-009

SIZES: 15mm or 20mm

FEATURES:

- 15mm thru. axle spacers
- 20mm thru. axle spacers



RECOIL AXLE

Type	Part No.
ALUMINUM	3200-004

SIZE: 12mm x 135mm

FEATURES:

- An astonishing 102g
- Ultra lightweight T-7000 series Aluminum for maximum strength and durability



MOMENTUM AXLE

Type	Part No.
STEEL	3200-003
ALUMINUM	3200-030

SIZE: 12mm x 135mm

FEATURES:

- Perfect for any 12mm x 135mm bolt on application or to just add strength to your current set-up
- Ultra strong 4130 Chromoly construction
- 3/8 axle step down dropout
- Weight: Steel; 136g, Aluminum; 65g



MOMENTUM | STEEL



MOMENTUM | ALUMINUM

OUTLAW CONVERSION KIT

Size	Part No.
135mm	3200-637
142mm	3200-639
157mm	3200-640

SIZES: 135mm, 142mm, 157mm

FEATURES:

- Converts wheel spacing





MAXIMILLIAN MEY

SWITCHBACK SPD PEDAL

3120-200

FEATURES:

- 572 grams a pair with pins.
- Aluminum body
- SPD compatible
- 2 sided SPD design
- Adjustable tension design
- 2 DU bushings 1 Sealed bearing
- 110mm-w / 100mm-l / 17mm thin
- CNC Chromo axle
- 24 removable pins



420 FLATS PEDAL

Color	Part No.
AND Black	3056-111
AND Red	3056-112
AND Blue	3056-116
AND Green	3056-117

FEATURES:

- Extruded body
- CNC machined
- DU/sealed bearings
- Removable W33 & V8 Pins
- Weight: 420 grams/pair (440g with pins/pair)





WORLD FORCE PEDAL

Color	Part No.
MATTE Black	3120-100
MATTE Red	3120-101

FEATURES:

- The ultimate flat pedal developed by top riders
- True concave platform achieved through platform shape and pin height
- CNC machined 6061 T6 Aluminum body
- Strong 4130 chromo axle
- Parallel ridges on inboard, outboard and middle of body for additional grip
- Perfect balance of weight, durability and strength
- Weight: 380g
- Outboard + center bearing; Inboard bushing, for long-life and smooth running
- Spare pins and tool included



FLAT IRON PEDAL

Color	Part No.
BLACK	3056-900
YELLOW	3056-901

FEATURES:

- Fatty pins for durability and use with knobby shoes
- Micro pins for decreased weight and increased traction
- Customize your pedals to your riding style by using a mixture of pin configurations
- Damaged pins can be removed from either side of the pedal
- 6061-T6 forged Aluminum body
- 4130 Chromo axle
- Oversized sealed outboard bearing with additional internal bushing
- Pin removal tool and spare pins included
- Weight: 345g/pair (3.85g with pins/pair)



SHOON PEDAL

Color	Part No.
BLACK	3056-760
WHITE	3056-761
RED	3056-762
HI-VIZ	3056-764

FEATURES:

- Chromo spindle
- Loose ball bearings
- Grippy, molded pins
- Weight: only 322g/pair



CFK | CARBON

AGILE BARS

Color	780mm
BLACK/GRAY	3001-111
BLUE	3001-112
CRANK	3001-113
NEON	3001-114
RED	3001-115
TITANIUM GRAY	3001-116

SIZES: One size

FEATURES:

- Double-buttet 7050 T6 Aluminum
- Clamp size: 31.8mm
- Anodized colors
- Marked for a custom cut length
- Weight: 350g
- Width: 780mm with 1" rise
- Upsweep: 5°, Backsweep: 7°

CFK CARBON BAR 3001-310

SIZE: 31.8mm, 800mm, 20mm Rise

FEATURES:

- Super lightweight carbon handlebar
- Available in 800mm
- Weight: 203g (800)
- Clamp size: 31.8mm
- 20mm rise, 5° upsweep, and 8°
- Classic matte carbon fiber woven finish



AGILE | NEON



AGILE | BLUE



AGILE | RED



AGILE | BLACK/GRAY



AGILE | TITANIUM GRAY



AGILE | CRANK



FLOW | BLACK/WHITE

FLOW | BLACK/BLUE

FLOW | BLACK/GRAY

FLOW | BLACK/YELLOW

FLOW | BLACK/RED

FLOW BARS 3011-***

Color	750mm, 1"	750MM, 2"	800MM, 1"
BLACK/WHITE	000	100	200
BLACK/BLUE	002	101	202
BLACK/YELLOW	003	102	203
BLACK/RED	004	103	204
BLACK/GRAY	001	104	201

SIZES: 750mm, 1" or 2" Rise
800mm, 1"

FEATURES:

- Double-buttet 7050 T6 Aluminum
- Clamp size: 31.8mm
- Marked for a custom cut length
- Weight: 350g
- Upsweep: 4°, Backsweep: 7°



MATT MCDUFF



MATT MCDUFF



PREDATOR STEM

Color	Part No.
BLACK	3075-100
RED	3075-101
BLUE	3075-102
HI-VIZ	3075-109

SIZES: 31.8mm/50mm

FEATURES:

- Light and strong stem perfect for Enduro riding
- CNC Machined 6061 T6 Aluminum
- Laser etched logos
- 31.8mm bore diameters
- 50 & 60mm extension
- 40mm stack height
- 5° angle
- Weight: 113g





BARETTA II STEM

Color	Part No.
BLACK	3050-220
BLUE	3050-221
RED	3050-222
HI-VIZ	3050-225

SIZE: 31.8mm/40mm

FEATURES:

- CNC Machined 6061 T6 Aluminum
- Laser etched logos
- 31.8mm bore diameters
- 40mm extension
- 38mm stack height
- 15° rise
- Weight: 196g

LOGO GRIP

Color	Part No.
BLACK	3019-000
BLUE	3019-001
RED	3019-002

SIZES: One size

FEATURES:

- Thin recessed grip profile for maximum feel
- Anodized aluminum lock-on collars
- Grip length: 130mm
- Allen Screws to tighten collars
- Comes as grip set with collars and plugs





Q/R CLAMP 3033-1

Color	31.8	34.9
BLACK	17	18
RED	26	27
BLUE	32	33
GREEN	36	37

FEATURES:

- Seat clamp designed for both MTB and BMX use
- Strong and efficient clamp design
- 7075 Aluminum construction
- Available in 31.8mm and 34.9mm
- Weight: 34g (31.8mm), 36g (34.9mm)

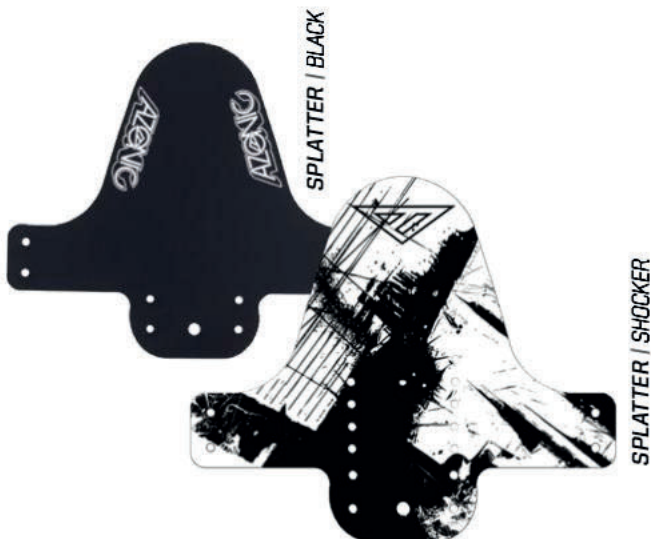


PIN IT SEAT POST 3033-2

Color	27.2	30.9	31.6	34.9
BLACK	00	10	20	30
BLUE	01	11	21	-
RED	02	12	22	-

FEATURES:

- 6061-T6 forged Aluminum
- 2 bolt clamp
- High polished finish
- Laser etched logos
- 350mm length
- Available in 27.2, 30.9, 31.6, and 34.9mm
- Weight: 290g



SPLATTER FENDER

Graphic	Part No.
BLACK	3021-000
SHOCKER	3021-111

FEATURES:

- Mount front or rear
- Universal fit for front or back: 8 holes
- Comes with 4 zip ties (and 4 spares)
- Polypropylene
- Weight: 33g



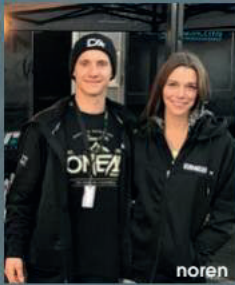


ONE OF US

Every day for nearly 50 years one of us is out riding. Be it professionals, family, friends, or staff, each one of you allows us to make O'Neal happen, and as a team, we cannot be stopped. The continued contribution, feedback, and support are most sincerely appreciated. For those of you we were lucky enough to capture here as well as those that are camera shy, we thank you for taking the ride with us as this journey continues...



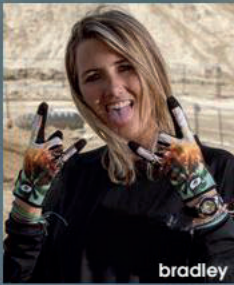
ojeda



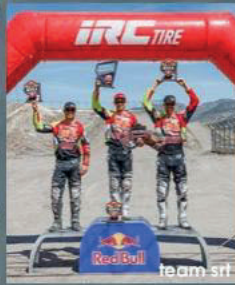
noren



grafunder



bradley



team srt



gaylan



caarasa



eddy



wally & joe | srt



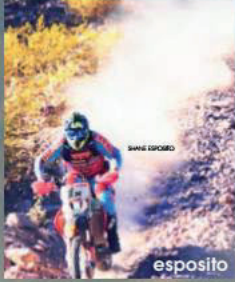
mason and james



kapin



camden & coop



esposito



maeda



baker



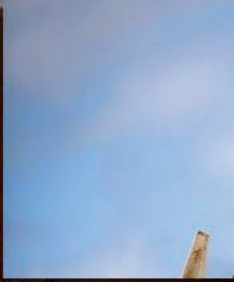
myers



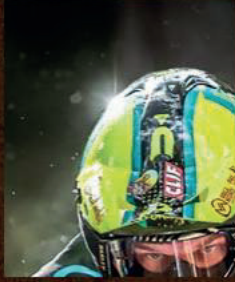
collin morison



rudy



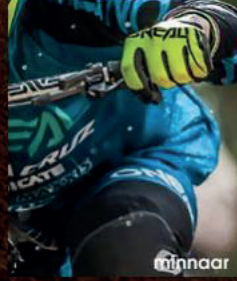
dumais



kessler



redmond



minnaar



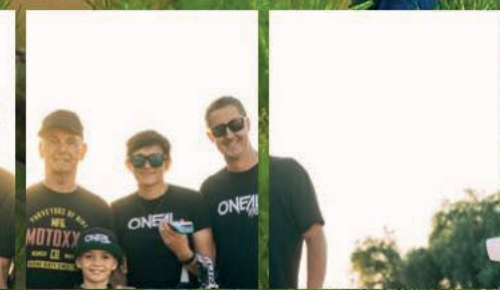
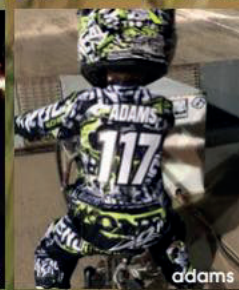
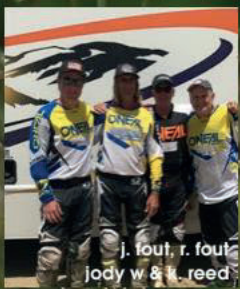
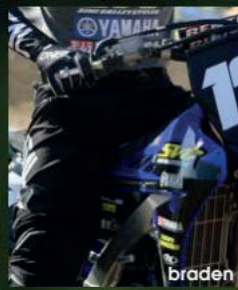
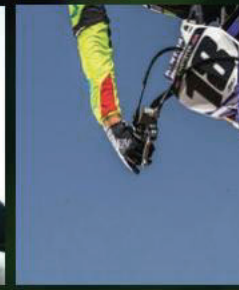
fin



stewart



person





ANNO

THE

THE



Discover a comprehensive collection of motorcycle riding gear on our website.