



20

O'NEAL

O'NEAL





## **O'Neal**

Racing Since 1970

### Our Heritage Runs Deep

In the foothills of Los Angeles, California during the 1960's, things were a bit different. The decade of change was rapidly approaching and the landscape of Americana was quickly taking root in the valleys and mountains surrounding the City of Angels. It was here along the local hillsides and trails that a young man named Jim O'Neal would ride his modified triumph to High School. After school and on weekends Jim would push that modified triumph through its paces hitting the dirt trails and carved tracks that peppered the hillside above the city.

In 1966 these same riding locations just outside the city became host to America's first Motocross race at Hopetown. It was then that Jim's passion for riding quickly turned into racing and in 1970 O'NEAL, the company was born. Jim found himself driven to distribute better parts, apparel and accessories to allow young racers on two wheels to go further and ride faster than ever before.

Today you can find the O'NEAL US office just a few miles from that old Hopetown track. In the office you can find our dedicated team members still pushing to develop product to take you further and faster on two wheels than ever before. And still today on those tracks and trails just outside this great city you will find Jim O'Neal pushing his passions to the limits every chance he gets. More than 47 years later you can find O'NEAL product at nearly 7,000 retail locations worldwide. In each one of these locations you will find the passion to push further in every single O'NEAL product produced.

Enjoy the Ride

Jim O'Neal  
O'Neal Rider and Founder



Jim O'Neal



Holley

A bit of HiStory:

47 years. Thousands of Test Pilots. From the grueling terrain of the Baja 1000 to the scorching deserts of Dakar, Through MX GP's in Europe or the US Supercross series . . .



Turner



Deegan



Malherbe



# FINISH

and got you to the races. Doesn't it get  
shots when you sign on the dotted line

**Brian:** Right now I can be whatever I want  
which is good because that is what Moto  
Moto XXX wants the image I have now  
how I want to dress. That's how they  
The only thing is the money. With big  
the riders have to kiss up to the big  
because that's where the money is. I  
what we're doing with Moto XXX, with  
some outside sponsors to help the  
more hardcore riders, so they can  
image and make the kind of  
money like the other guys.  
That's what we're trying to do  
right now. It's going  
pretty good.

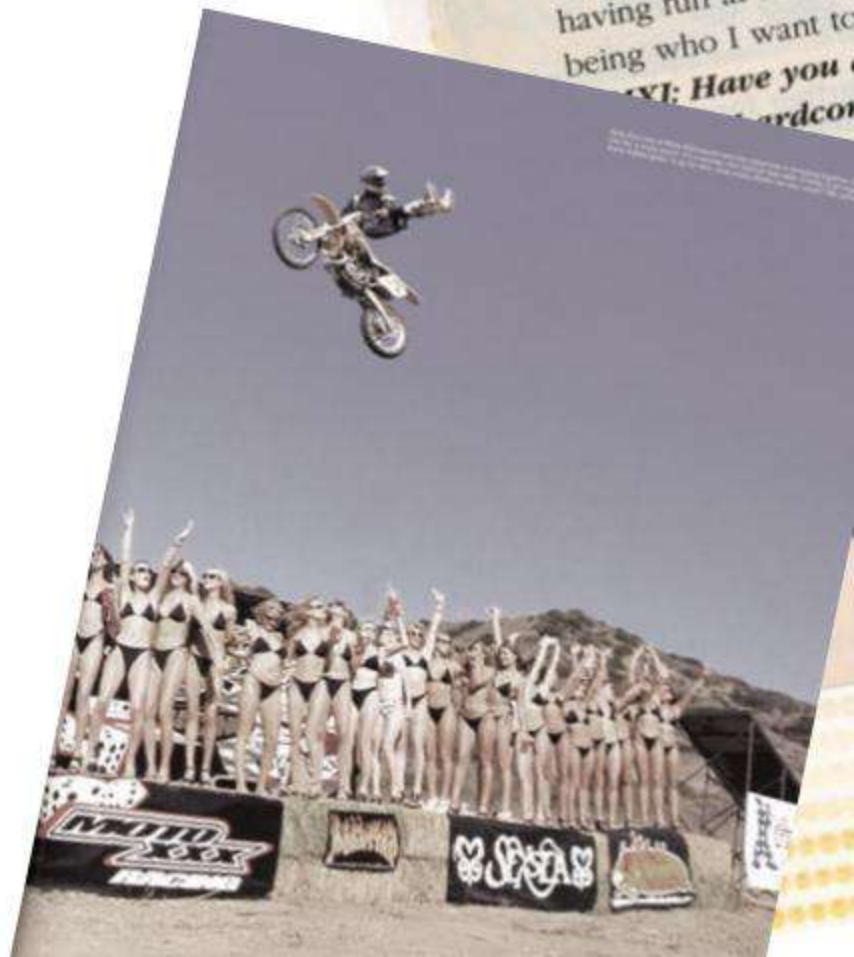
**MXJ:** So you bristled  
under Team Chaparral's  
rules about the way you  
looked?

**Brian:** It was really hard. I  
would never have had a  
problem if the factories  
happened to call me. I'm sure  
things are starting to change.  
They have factory riders who  
have earrings and tattoos.

**MXJ:** If you were to be  
known for one thing, what  
would you want it to be?

**Brian:** A guy who had  
without . . . it's kind of  
to explain. My whole thing  
racing is, be who you are  
be, and if they can't accept  
they can't accept it! I don't  
play their games. I just  
having fun at the races.  
being who I want to be.

**MXJ:** Have you ever  
hardcore



O'NEAL Product has been proven at them all for nearly 50 years!



**O'NEAL**  
U.S.A.

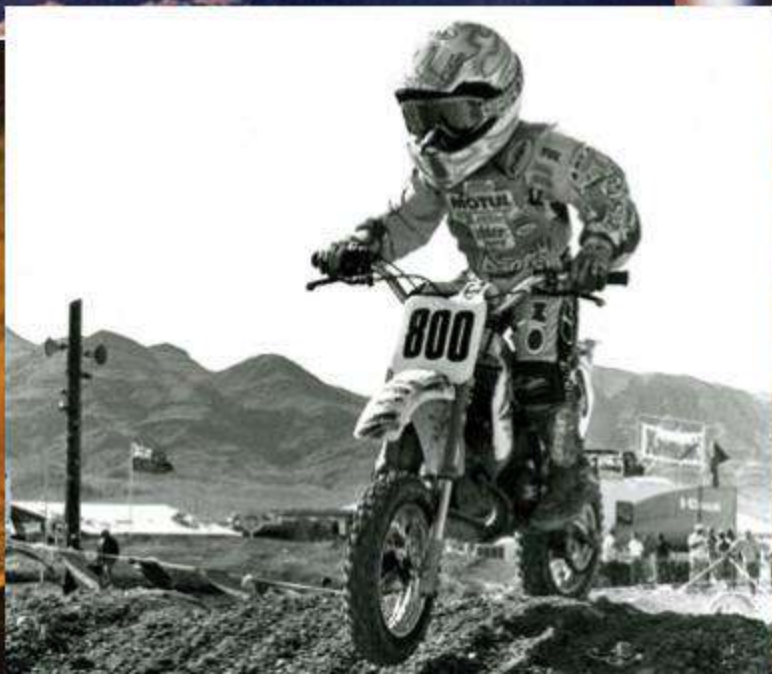
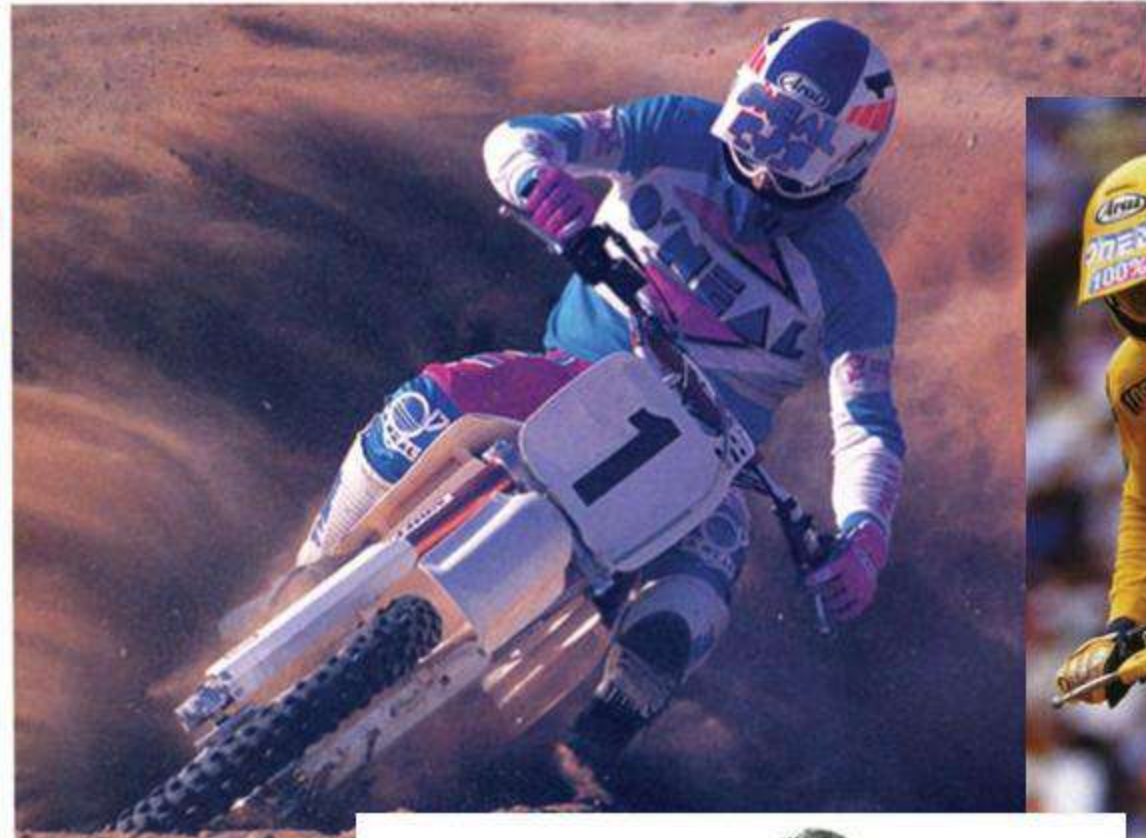
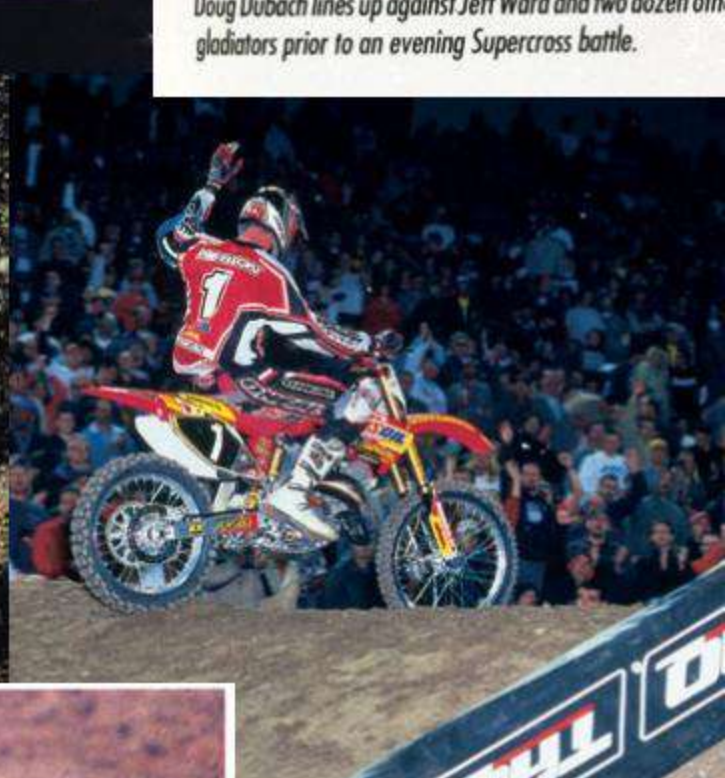
In every class and in every riding discipline, O'NEAL product has crossed the finish line assuring quality in every single ride!



**O'NEAL**  
Since 1970.



Doug Dubach lines up against Jeff Ward and two dozen other gladiators prior to an evening Supercross battle.





SUZUKI RACING

NEW ERA

HARD WEAR

SUZUKI

ONE

100% PURE CHAMPAGNE  
Fruit Valley  
THUNDER VALLEY  
NATIONAL  
MAY 30, 2015





# CONTENTS

## HELMETS

- 10 Preview
- 12 Ten Series
- 14 Seven Series
- 16 Five Series
- 18 Three Series
- 20 Two Series
- 22 Moto XXX

## RIDING GEAR

- 26 Preview
- 28 Hardwear
- 32 Mayhem Lite
- 36 Ultra-Lite
- 38 Element
- 44 Womens

## GLOVES

- 48 Jump
- 49 Butch Carbon
- 49 Revolution
- 50 Element
- 51 Matrix

## BOOTS

- 54 RDX
- 56 Element/Shorty II
- 57 Rider
- 58 MX Socks

## PROTECTION

- 62 Chest/Body Guards
- 65 Padded Short
- 65 Kidney Belt
- 66 Baja Jacket
- 67 Knee/Shin Guards
- 67 PeeWee Protection

## ACCESSORIES

- 69 Grips
- 70 Gear Bag/Umbrella
- 71 Blanket/Stickers

## BLUR GOGGLES

- 74 B-1
- 76 B-Flex
- 78 B-Zero

## MOTO XXX

- 82 Helmets
- 83 Jerseys
- 84 T-Shirts
- 87 Hats/Wallet

## FOUR

- 89 Glove/T-Shirt

## JERSEY PRINTING

- 90 Print Options

## STREET GEAR

- 93 Helmets/Gloves

## O'NEAL CYCLING

- 96 Helmets
- 101 Gloves
- 107 Protection
- 112 Clothing

## AZONIC

- 124 Wheels
- 127 Pedals
- 130 Bars
- 134 Stems
- 136 Small Parts
- 142 One of Us



# S E V E N S E R I E S

- » TEN SERIES
- » SEVEN SERIES
- » FIVE SERIES
- » THREE SERIES
- » TWO SERIES
- » MOTO XXX

## PROTECT THAT NOGGIN'

Protect your greatest asset - While none of us go riding thinking we are going to crash hard, we all know it happens. Having the right helmet is critical. The 2017 O'Neal helmets come in a variety of styles all of which exceed DOT, ECE, and AS safety standards. O'Neal helmets are designed using the latest technology allowing your head to stay cool with multiple vents and ultra plush liners. When it comes to head protection, trust the company that's been producing protective apparel for nearly 50 years, Trust O'Neal.



2017 HELMET

# PREVIEW

→ | TEN SERIES | SEVEN SERIES | MOTO XXX | FIVE SERIES | THREE SERIES | TWO SERIES



**TEN SERIES**  
GLITCH: BLACK/NEON



**SEVEN SERIES**  
CHASER: BLACK/BLUE/HI-VIZ



**SEVEN SERIES**  
CHASER: BLACK/WHITE/HI-VIZ



**MOTO XXX**  
WORLD TOUR: GRAY



**FIVE SERIES**  
CALI: BLK/GRAY



**FIVE SERIES**  
BLOCKER: BLACK/WHITE



**FIVE SERIES**  
BLOCKER: BLK/HI-VIZ ORANGE



**THREE SERIES**  
RADIUM: BLACK/WHITE



**THREE SERIES**  
RADIUM: RED/BLUE/WHITE



**THREE SERIES**  
RADIUM: GRAY/PINK



**TEN SERIES**  
FLOW: BLACK/HI-VIZ



**TEN SERIES**  
FLOW: BLUE/RED



**SEVEN SERIES**  
CHASER: HI-VIZ RED/YELLOW



**MOTO XXX**  
PBX: BLUE/WHITE



**FIVE SERIES**  
WINGMAN: METAL/WHT



**FIVE SERIES**  
VANDAL: BLACK/RED/NEON



**THREE SERIES**  
FLAT: BLACK



**THREE SERIES**  
FLAT: WHITE



**THREE SERIES**  
RADIUM: HI-VIZ/GRAY



**THREE SERIES**  
FUEL: BLACK/HI-VIZ



**TWO SERIES**  
MANALISHI: BLACK/WHITE



**TWO SERIES**  
FLAT: BLACK

# 10 SERIES

**SIZES:** Adult XS-XXL

**AVAILABLE GRAPHICS:** Flow, Glitch

## FEATURES

- Lightweight fiberglass construction
- Shell weight ( $\pm 50g$ ): 1150 g (size M)
- Adjustable visor design
- Maximum airflow throughout the helmet, delivered by oversized vents and EPS channels
- Ultra-plush, removable and washable padded inner liner keeps you cool and dry by wicking away sweat (sweat absorbing)
- Removable mouthpiece for easy cleaning
- Durable multi-colored, clear-coated graphics
- Meets standards: DOT, ECE 22-05, AS/NZS and ACU
- Side goggle traction pad keeps goggle strap securely in place
- High air intake mouth vent with screen lets air in while keeping debris out
- Replacement liners / cheek pads and visors available

## 10 SERIES HELMETS

Graphic: Color	Part No.	XS	S	M	L	XL	2X
Flow: Black/gray/hi-viz	0624-3**	11	12	13	14	15	16
Flow: Blue/red	0624-3**	01	02	03	04	05	06
Glitch: Black/neon	0624-1**	01	02	03	04	05	06





black/neon



GLITCH FLOW



blue/red



black/gray/hi-viz



# 7 SERIES

**SIZES:** Adult XS-XXL  
**AVAILABLE GRAPHICS:** Chaser

## FEATURES

- Lightweight injected thermoplastic alloy shell
- DOT/ECE Shell weight ( $\pm 50\text{g}$ ): 1400 g (size L)
- Multiple shell sizes for optimum fit
- Massive high volume air vent system
- State of the art designed aerodynamic shell and visor
- Side goggle traction pad keeps goggle strap securely in place
- Removable/washable moisture wicking comfort liner
- Meets standards: DOT, ECE 22-05 and ACU
- Replacement liners / cheek pads and visors available

## 7 SERIES HELMETS

Graphic: Color	Part No.	XS	S	M	L	XL	2X
Chaser: Blk/blu/hi-viz	0578-0**	01	02	03	04	05	06
Chaser: Blk/wht/hi-viz	0578-1**	01	02	03	04	05	06
Chaser: Hi-viz/red/yel	0578-2**	01	02	03	04	05	06







CHASER



hi-viz/red/yellow



black/blue/hi-viz



black/white

# 5SERIES

**SIZES:** Adult XS-XXL

Youth S-L available in Wingman graphic

**AVAILABLE GRAPHICS:** Wingman, California, Vandal, Blocker

## FEATURES

- Polycarbonate/ABS shell construction
- Shell weight (size large): 1350grams (±50)
- Ultra-plush removable/washable padded liner keeps you cool and dry by wicking away sweat
- Adjustable visor design
- Multiple air vents help keep you cool and dry
- Durable multi-colored clear coated graphics
- Replacement parts available
- Meets DOT, ECE 22-05 and AS/NZS safety standards



## 5 SERIES HELMETS

Graphic: Color	Part No.	XS	S	M	L	XL	2X
Blocker: Blk/wht	0618-0**	31	32	33	34	35	36
Blocker: Blk/hi-viz/org	0618-0**	41	42	43	44	45	46
Vandal: Blk/neon/red	0618-2**	71	72	73	74	75	76
Wingman: Metal/wht	0618-0**	11	12	13	14	15	16
California: Blk/gry	0618-4**	51	52	53	54	55	56

## 5 SERIES YOUTH HELMET

Graphic: Color	Part No.	S	M	L
Wingman: Metal/wht	0618-4**	42	43	44





metal/white

WINGMAN



black/hi-viz/orange

black/white

BLOCKER



black/gray

black/neon/red

VANDAL

CALIFORNIA



# 3SERIES

**SIZES:** Adult XS-XXL (and Youth S-XL available in Fuel & some Radium colors)

**AVAILABLE GRAPHICS:** Fuel, Flat, Radium

## FEATURES

- Shell is constructed with durable Polycarbonate
- Shell weight (size large): 1500grams (±50)
- Ultra-plush removable/washable padded liner keeps you cool and dry by wicking away sweat
- Adjustable visor design
- Intake and exhaust vents for ventilation and cooling
- Durable multi-colored clear coated graphics
- Replacement parts available
- Meets DOT, ECE 22-05 and AS/NZS safety standards

YOUTH  
OPTIONS

## 3 SERIES HELMETS

Graphic: Color	Part No.	XS	S	M	L	XL	2X
Flat: White	0623-0**	51	52	53	54	55	56
Flat: Black	0623-0**	61	62	63	64	65	66
Fuel: Blk/hi-viz	0623-5**	31	32	33	34	35	36
Radium: Red/blu/wht	0623-6**	11	12	13	14	15	16
Radium: Hi-viz/gry	0623-6**	21	22	23	24	25	26
Radium: Blk/wht	0623-6**	31	32	33	34	35	36
Radium: Gry/pnk/hi-viz	0623-6**	51	52	53	54	55	56

## 3 SERIES YOUTH HELMETS

Graphic: Color	Part No.	S	M	L	XL
Fuel: Blk/hi-viz	0623-6**	72	73	74	75
Radium: Blk/wht	0623-6**	62	63	64	65
Radium: Gry/pnk/hi-viz	0623-6**	82	83	84	85





black/hi-viz

FUEL



black



white

FLAT RADIUM



black/white



red/blue/white



black/hi-viz



gray/pink/hi-viz

# 2SERIES

**SIZES:** Adult XS-XXL

**AVAILABLE GRAPHICS:** Manalishi, Flat

## FEATURES

- Shell is constructed with ABS
- Shell weight (size L): 1450grams (±50)
- Ultra-plush removable/washable padded liner
- Multiple air vents ventilation and cooling
- Rubber roost nose guard
- Height adjustable visor
- Double-D release chin strap
- Durable multi-colored clear coated graphics
- Meets standards: DOT, ECE 22-05

## TWO SERIES HELMETS

Graphic: Color	Part No.	XS	S	M	L	XL	2X
Flat: Black	0200-1**	11	12	13	14	15	16
Manalishi: Black/White	0200-0**	01	02	03	04	05	06





black/white



MANNALISHI



black



FLAT



MOTOXXX

**SIZES:** Adult XS-XXL  
**AVAILABLE GRAPHICS:** PBX, World Tour

**FEATURES**

- Lightweight poly-injected construction
- Shell weight 1350 grams  $\pm$  50 (Size L)
- Ultra-plush, removable & washable comfort liner
- Full shell venting for improved aerodynamics and overall cooling
- State of the art designed aerodynamic shell and visor
- Side goggle traction pad keeps goggle strap securely in place
- Meets or exceeds DOT & ECE 22-05 safety standards
- Replacement liners / cheek pads and visors available

**MOTO XXX HELMETS**

Graphic	Part No.	XS	S	M	L	XL	2X
World Tour	0622-3**	01	02	03	04	05	06
PBX	0622-4**	01	02	03	04	05	06







world tour



WORLD TOUR PRX



pbx



Colin Morrison



# RIDING GEAR

- » HARDWEAR
- » MAYHEM-LITE
- » ULTRA-LITE
- » APOCALYPSE
- » ELEMENT
- » WOMENS

## SECOND SKIN

It's the layer of protection that wraps you like a 2nd skin, yet it needs to be comfortable enough, breathable enough, and cut just right so you hardly feel it at all. Making the finest in protective apparel is what we have done for over four and a half decades. Ride in O'NEAL and you get the best of all worlds; perfect comfort, flexibility and feel, all while providing protection when you need it most.





**HARDWEAR**  
FLOW JAG: YEL/RED

**HARDWEAR**  
FLOW JAG: BLU/RED

**HARDWEAR**  
FLOW JAG: WHT/RED

**HARDWEAR**  
FLOW JAG: MINT/RED

**HARDWEAR**  
SKIZM: BLU/RED



**MAYHEM-LITE**  
CRANK: BLK/MULTI

**ELEMENT**  
AFTERBURNER: BLU/RED

**ELEMENT**  
ENIGMA: BLK/WHT

**ELEMENT**  
ENIGMA: BLK/HI-VIZ

**ELEMENT**  
VANDAL: BLK/NEON/RED



**HARDWEAR**  
SKIZM: NEON/TEAL



**ULTRA-LITE**  
LE '75: BLK/WHT



**MAYHEM-LITE**  
BLOCKER: RED/TEAL



**MAYHEM-LITE**  
BLOCKER: BLK/WHT/ORG



**MAYHEM-LITE**  
BLOCKER: BLK/HI-VIZ



**ELEMENT**  
RACEWEAR: GRV/HI-VIZ



**ELEMENT**  
RACEWEAR: BLK/WHT



**ELEMENT**  
RACEWEAR: BLK/ORG



**APOCALYPSE**  
THREAT: BLK/WHT



**APOCALYPSE**  
THREAT: BLK/PINK



**ELEMENT**  
RACEWEAR: BLK/PINK/HV

# HARDWEAR

- » SKIZM
- » FLOW JAG

## RACING TECHNOLOGY

This is where it all comes together. With 45 years of racing technology and development, the Hardwear line encompasses all the benefits and features known to man and then some! The Hardwear line has received critical acclaim from the world's harshest test labs and editorial staff and is proven to be the toughest protective apparel on the planet!



|→| LIGHTWEIGHT PERFORMANCE FABRIC



|→| EXTENDED TAIL WITH COOLING MESH



|→| LEATHER KNEE PANELS



|→| OUR LIGHTEST HARDWEAR PANT EVER



|→| INTAKE VENTS & 100% VENTED MESH LINER



|→| FULLY ADJUSTABLE BELT SYSTEM



Kyle Chisholm

# HARDWEAR GEAR

SIZES: Adult: Jersey S-XXL, Pant 28-40  
 AVAILABLE GRAPHICS: Skizm, Flow Jag

## FEATURES - JERSEY

- Our most advanced jersey ever, featuring the All New 'Pro-Lite' Performance Fabric with 4-way stretch
- The lightest jersey in our history at only 6 oz (size L) is 35% lighter than our Element Jersey
- Closed cell vented panels under the arms, wrists, and back of the neck
- Sublimated no fade graphic
- High quality moisture wicking materials
- Extended tail with cooling mesh
- Silicone print on tail to keep your jersey tucked in
- Vented and Tagless neck design
- Micro cuff decreases restriction
- 100% vented jersey
- 1 Flow Jag pant matches 4 Flow Jag jersey colorways. Buy one or buy them all and have 4 different looks for a fraction of the price!

## FEATURES - PANT

- Reduced weight - our lightest Hardwear pant!
- 360 degree adjustable belt keeps pants in place
- Extra long leather heat shield
- Wide accordion knees, sized for knee braces
- Seat padding for extra comfort
- Triple stitched in critical areas for durability
- Lightweight protective rubber patches
- Stretch spandex panels
- Ergonomic pre-bent and padded knee area
- Heavy duty but lightweight denier fabrics
- 1 Flow Jag pant matches 4 Flow Jag jersey colorways. Buy one or buy them all and have 4 different looks for a fraction of the price!

HARDWEAR



### HARDWEAR JERSEYS

Graphic: Color	Part No.	S	M	L	XL	2X
Skizm: Blue/red	0032-0**	02	03	04	05	06
Skizm: Neon/Teal	0032-2**	02	03	04	05	06
Flow Jag: Mint/Red	0032-3**	02	03	04	05	06
Flow Jag: Blue/Red	0032-4**	02	03	04	05	06
Flow Jag: White/Red	0032-7**	02	03	04	05	06
Flow Jag: Yellow/Red	0032-8**	02	03	04	05	06

### HARDWEAR PANTS

Graphic: Color	Part No.	28	30	32	34	36	38	40
Skizm: Blue/red	0132-0**	28	30	32	34	36	38	40
Skizm: Neon/Teal	0132-2**	28	30	32	34	36	38	40
Flow Jag: Black/Red	0132-3**	28	30	32	34	36	38	40



FLOW JAGG



SKIZM



# MAYHEM LITE

- » CRANK
- » BLOCKER

## STREAMLINED & LIGHTWEIGHT

Built to be bold while remaining lightweight and breathable, the Mayhem line has been streamlined over the years. Working with our sponsored athletes, we set out to develop the Mayhem-Lite line. Focusing on essential features such as the dual waist closure and brace accommodating knees, we developed a pant in a class of its own! Whether you want to stand out from the crowd in the Crank graphic or choose the race inspired Blocker kit, the Mayhem line will stand up to the harshest of conditions, moto after moto.





# MAYHEM-LITE GEAR

SIZES: Adult: Jersey S-XXL, Pant 28-42  
AVAILABLE GRAPHICS: Crank, Blocker

## FEATURES – JERSEY

- Streamlined and lightweight design for the serious racer
- Jersey weight 7.9oz (size L)
- Multiple panel construction for an ergonomically correct cut and fit
- Sublimated graphics that won't fade
- Extended tail
- Clear silicone printing on lower back to help keep jersey tucked in

## FEATURES – PANT

- Streamlined and lightweight design for the serious racer
- No rubber thigh patches for reduced weight and increased mobility
- Durable denier fabrics with triple stitching in critical areas
- Leather heat shield
- Reinforced and adjustable elastic waist system with hook-and-loop closure for a precise fit
- Double snaps at waist closure, reinforced with hook and loop to stay secure and keep the zipper in its place
- More durable, wear resistant panels on: seat, inside of legs, and knees
- Lighter weight, more breathable panels, positioned away from bike contact points
- Stretch panels in key points on: front, back, and knees for great freedom of movement
- Vented mesh liner
- Ergonomically correct, pre-bent and padded knee area
- Tapered lower leg to prevent bunching in boot

MAYHEM



## MAYHEM JERSEYS

Graphic: Color	Part No.	S	M	L	XL	2X
Crank: Black/Multi	0023-1**	02	03	04	05	06
Blocker: Black/White/Orange	0030-1**	02	03	04	05	06
Blocker: Black/Hi-Viz	0030-2**	02	03	04	05	06
Blocker: Red/Teal	0030-3**	02	03	04	05	06

## MAYHEM PANTS

Graphic: Color	Part No.	28	30	32	34	36	38	40	42
Crank: Black/Multi	0123-1**	28	30	32	34	36	38	40	42
Blocker: Black/White/Orange	0130-1**	28	30	32	34	36	38	40	42
Blocker: Black/Hi-Viz	0130-2**	28	30	32	34	36	38	40	42
Blocker: Red/Teal	0130-3**	28	30	32	34	36	38	40	42

BLOCKER



CRANK



ULTRA-LITE

» LE '75

### ULTRA-LITE TECHNOLOGY

Built on our Hardwear frame, the Ultra Lite '75 features graphics and looks from the mid 70's while providing todays premium materials for protection all in a super light gear package. Featuring pants with a 360 belt system, genuine leather in the knee and plush soft vented jerseys, the Ultra Lite has got you covered in the warmest of days with the finest in retro style.

## ULTRA-LITE & FREERIDE JERSEYS

YOUTH  
OPTIONS

**SIZES:** Adult S-XXL (3X available in Threat jersey)

Youth S-XL in Demolition Blk/Hi-Viz

**AVAILABLE GRAPHICS:** Demolition (cotton),  
Ultra-lite '75, Threat

### FEATURES - DEMOLITION JERSEYS

- Made of 100% combed heavy weight cotton

### FEATURES - ULTRA-LITE '75 JERSEY

- Inspired by the heritage of the sport
- Sublimated no-fade graphic
- Padded elbow protection
- Vented mesh polyester
- Extended tail, with silicon print, to keep your jersey tucked in
- V-Neck collar
- Tag-less neck label

### FEATURES - THREAT JERSEY

- Sublimated no-fade graphic
- Versatile graphics match multiple pant designs
- Breathable, moisture-wicking fabric
- Padded elbow protection
- Silicone print on rear of jersey to keep it tucked in



# APOCALYPSE PANTS

SIZES: Adult 28-50  
 AVAILABLE COLORS: Black

## FEATURES

- Over-the-boot style pants that easily zip-off into shorts
- Adjustable waist system with hook-and-loop closure for a precise fit
- 2 zipper pockets for secure storage
- 2 jeans style front pockets
- Heavy-duty denier fabrics for added durability
- Strategic stretch panels for comfort and mobility
- Jeans style front snap, and zipper closure
- Inner leg panel for heat resistance



APOCALYPSE



ULTRA-LITE

## ULTRA-LITE & FREERIDE JERSEYS

Graphic: Color	Part No.	S	M	L	XL	2X	3X
Ultra-lite '75: Black/White	0019-5**	02	03	04	05	06	—
Threat: Black/White	0090-3**	02	03	04	05	06	07
Demolition: Black/White	0030-0**	12	13	14	15	16	—
Youth Demolition: Black/Hi-Viz	0085-0**	32	33	34	35	—	—

## ULTRA-LITE & APOCALYPSE PANTS

Graphic: Color	Part No.	28	30	32	34	36	38	40	42	44	46	48	50
Ultra-lite '75: Black/White	0119-5**	28	30	32	34	36	38	40	—	—	—	—	—
Apocalypse: Black	0134-1**	28	30	32	34	36	38	40	42	44	46	48	50



THREAT



DEMOLITION



YTH DEMOLITION

# ELEMENT

- » RACEWEAR
- » VANDAL
- » ENIGMA
- » AFTERBURNER

## ELEMENT TECHNOLOGY

Entry-level in price but Premium level in performance! The All New 2017 Element gear is built better than what the other guys offer in their highest priced combos! The Element line brings you race ready graphics, superior materials, and comes in a wide array of colors and sizes to fit the entire family. Made with a roomy, comfy fit, the Element line comes in cuts just right to fit the entire family!







# ELEMENT GEAR

YOUTH  
OPTIONS

**SIZES:** Adult: Jersey S-XXL, Pant 28-42  
(jersey sizes 3X and 4X and pant sizes 44-52  
available in black/white racewear only)

**AVAILABLE GRAPHICS:** Racewear, Afterburner,  
Enigma, Vandal

## FEATURES - JERSEY

- Breathable, moisture-wicking material
- Jersey weight 9.3oz (size L)
- Sublimated graphics
- Sewn-in elbow padding
- Extended tail that keeps jersey tucked in
- V-neck collar

## FEATURES - PANT

- Heavy duty but lightweight denier fabrics provide the perfect combination of comfort and protection while riding
- More durable, wear resistant panels on: seat, inside of legs, and knees
- Lighter weight, more breathable panels, positioned away from bike contact points
- Stretch panels in key points on the front, back, and knees of pants for great freedom-of-movement
- Elastic waist with adjustable ratchet closure system for a secure and snug fit
- Protective rubber patches for extra protection when crashing
- Tapered legs with elastic cuffs for a snug fit
- Fully lined for added comfort
- Removable, internal, EVA foam hip protectors

ELEMENT  
GEAR



### ELEMENT YOUTH JERSEYS

Graphic: Color	Part No.	XS	S	M	L	XL
Racewear: Black/White	0029-1**	01	02	03	04	05
Racewear: Gray/Hi-Viz	0029-2**	—	02	03	04	05
Racewear: Black/Orange	0029-4**	—	02	03	04	05

### ELEMENT YOUTH PANTS

Graphic: Color	Part No.	2/3	4/5	5/6	8/10	12/14	28
Racewear: Black/White	0128-1**	18	20	22	24	26	27
Racewear: Gray/Hi-Viz	0128-2**	—	—	22	24	26	27
Racewear: Black/Orange	0128-4**	—	—	22	24	26	27

RACEWEAR



**ELEMENT JERSEYS**

Graphic: Color	Part No.	S	M	L	XL	2X	3X	3X
Racewear: Black/White	0028-1**	02	03	04	05	06	07	08
Racewear: Gray/Hi-Viz	0028-2**	02	03	04	05	06	—	—
Racewear: Black/Orange	0028-4**	02	03	04	05	06	—	—

**ELEMENT PANTS**

Graphic: Color	Part No.	28	30	32	34	36	38	40	42	44	46	48	50	52
Racewear: Black/White	0128-1**	28	30	32	34	36	38	40	42	44	46	48	50	52
Racewear: Gray/Hi-Viz	0128-2**	28	30	32	34	36	38	40	42	—	—	—	—	—
Racewear: Black/Orange	0128-4**	28	30	32	34	36	38	40	42	—	—	—	—	—

# ELEMENT GEAR

YOUTH  
OPTIONS

**SIZES:** Adult: Jersey S-XXL, Pant 28-42  
(jersey sizes 3X and 4X and pant sizes 44-52  
available in black/white racewear only)

**AVAILABLE GRAPHICS:** Racewear, Afterburner,  
Enigma, Vandal

## FEATURES - JERSEY

- Breathable, moisture-wicking material
- Sublimated graphics
- Sewn-in elbow padding
- Extended tail that keeps jersey tucked in
- V-neck collar
- Extremely flexible collar

## FEATURES - PANT

- Heavy duty but lightweight denier fabrics provide the perfect combination of comfort and protection while riding
- More durable, wear resistant panels on: seat, inside of legs, and knees
- Lighter weight, more breathable panels, positioned away from bike contact points
- Stretch panels in key points on the front, back, and knees of pants for great freedom-of-movement
- Elastic waist with adjustable ratchet closure system for a secure and snug fit
- Protective rubber patches for extra protection when crashing
- Tapered legs with elastic cuffs for a snug fit
- Fully lined for added comfort
- Removable, internal, EVA foam hip protectors

ELEMENT



AFTERBURNER



VANDAL



ENIGMA



**ELEMENT JERSEYS**

Graphic: Color	Part No.	S	M	L	XL	2X
Enigma: Black/White	0028-5**	02	03	04	05	06
Enigma: Black/Hi-Viz	0028-5**	12	13	14	15	16
Vandal: Black/Neon/Red	0028-6**	12	13	14	15	16
Afterburner: Blue/Red	0028-8**	12	13	14	15	16

**ELEMENT PANTS**

Graphic: Color	Part No.	28	30	32	34	36	38	40	42
Enigma: Black/White	0128-5**	28	30	32	34	36	38	40	42
Enigma: Black/Hi-Viz	0128-5**	58	60	62	64	66	68	70	72
Vandal: Black/Neon/Red	0128-6**	58	60	62	64	66	68	70	72
Afterburner: Blue/Red	0128-8**	58	60	62	64	66	68	60	62

**ELEMENT YOUTH JERSEYS**

Graphic: Color	Part No.	S	M	L	XL
Enigma: Black/White	0029-5**	02	03	04	05
Enigma: Black/Hi-Viz	0029-5**	12	13	14	15
Vandal: Black/Neon/Red	0029-6**	12	13	14	15
Afterburner: Blue/Red	0029-8**	12	13	14	15

**ELEMENT YOUTH PANTS**

Graphic: Color	Part No.	5/6	8/10	12/14	28
Enigma: Black/White	0128-5**	22	24	26	27
Enigma: Black/Hi-Viz	0128-5**	52	54	56	57
Vandal: Black/Neon/Red	0128-6**	52	54	56	57
Afterburner: Blue/Red	0128-8**	52	54	56	57

# WOMENS

## JUST THE RIGHT FIT

Cut just right for the Female figure, O'NEAL offers a full line of protection for the ladies that want to hit the dirt! Made to fit in all the right places, O'NEAL has been in the front of the pack in product development for female apparel and accessories for decades!



# WOMENS & GIRLS GEAR



**SIZES:** Women's: Jersey S-XXL, Pant 1/2-13/14  
Youth (Element): Jersey S-XL, Pant Y5/6-Y12/14

**AVAILABLE GRAPHICS:** Element, Threat, Demolition

## FEATURES - ELEMENT/THREAT JERSEY

- Breathable, moisture-wicking material
- Sublimated graphics
- Sewn-in elbow padding
- Extended tail that keeps jersey tucked in (Element Only)
- V-neck collar

## FEATURES - DEMOLITION JERSEY

- Made of 100% combed heavy weight cotton

## FEATURES - ELEMENT PANT

- Heavy-duty but lightweight denier fabrics provide the perfect combination of comfort and protection while riding
- Female specific fit
- More durable, wear resistant panels on: seat, inside of legs, and knees
- Stretch panels in key points on the front, back, and knees of pants for great freedom of movement
- Elastic waist with adjustable ratchet closure system for a secure and snug fit
- Protective rubber patches for extra protection
- Tapered legs with elastic cuffs for a snug fit
- Fully lined for added comfort
- Removable, internal, EVA foam hip protectors

## FEATURES - APOCALYPSE PANT

- Over-the-boot style pants that easily zip-off into shorts
- Women's specific fit
- Adjustable waist system with Hook and Loop closure for a precise fit
- 2 zipper pockets for secure storage
- 2 jeans style front pockets
- Heavy-duty denier fabrics for added durability
- Strategic stretch panels for comfort and mobility
- Jeans style front snap, and zipper closure
- Hook and Loop closures on ankles for secure fit

DEMOLITION



THREAT



ELEMENT



## WOMENS JERSEYS

Graphic: Color	Part No.	S	M	L	XL	2X
Element: Black/Pink/Hi-Viz	0028-7**	02	03	04	05	06
Threat: Black/Pink	0090-4**	02	03	04	05	—
Demolition: Black/Pink	0085-0**	22	23	24	25	—

## WOMENS PANTS

Graphic: Color	Part No.	1/2	3/4	5/6	7/8	9/10	11/12	13/14
Element: Black/Pink/Hi-Viz	0128-7**	27	28	30	32	34	36	38
Apocalypse: Black	0134-8**	01	03	05	07	09	11	13

## YOUTH JERSEY

Graphic: Color	Part No.	S	M	L	XL
Element: Blk/Pink/Hi-Viz	0029-7**	02	03	04	05

## YOUTH PANTS

Graphic: Color	Part No.	5/6	8/10	12/14
Element: Blk/Pink/Hi-Viz	0128-7**	22	24	26







# GLOVES

- » JUMP
- » BUTCH
- » REVOLUTION
- » ELEMENT
- » MATRIX

## FITS LIKE A GLOVE

It's a rare mix to find hand protection that fits like a glove, feels as natural as your skin, and protects you from all the punishment. After more than forty five years of non-stop product development, you sort of get a feel for things. O'Neal gloves are made to wear better than the others, without sacrificing the gentle feel you need while racing. Let your fingers rejoice!

# JUMP

SIZES: Adult S-XXL

AVAILABLE GRAPHICS: Blocker, Jag, Skizm, Crank

## FEATURES

- Silicone printing on palms and finger tips for improved grip and braking control
- Long lasting and flexible material for the perfect fit
- Lightweight design with bold, non-fade graphics
- Seamless rollover fingertips
- Synthetic leather palm with double layer thumb reinforcement
- Hook and loop adjustable wrist closure



blk/red

## JUMP GLOVES

Graphic: Color	Part No.	S	M	L	XL	2X
Crank: Black/Multi	0385-1**	28	29	30	31	32
Blocker: Black	0385-2**	48	49	50	51	52
Blocker: White	0385-2**	58	59	60	61	62
Blocker: Black/Hi-Viz	0385-2**	68	69	70	71	72
Jag: Black/Red	0385-2**	78	79	80	81	82
Skizm: Blue/Red	0385-9**	38	39	40	41	42
Skizm: Neon/Teal	0385-9**	58	59	60	61	62

BLOCKER



blk/hi-viz

black

white

CRANK

SKIZM



blk/multi

blue/red

neon/teal

# BUTCH CARBON

SIZES: Adult S-XXL

AVAILABLE COLORS: Black

## FEATURES

- Polycarbonate, ballistic coverage, on individual knuckles delivers added confidence while maintaining dexterity
- Additional TPR and direct injection patches on top side of fingers and wrist
- Double layer Clarino® palm padding helps reduce blisters and prevent glove stiffening after drying
- Seamless, silicone rollover fingertips, for enhanced lever control
- Long-lasting, durable, and flexible materials for superior comfort
- Adjustable Hook and Loop wrist closure for secure and adjustable fit
- Pre-curved tailoring for the best fit possible, and helps to eliminate arm pump



## BUTCH CARBON

Color	Part No.	S	M	L	XL	2X
Black	0468-1**	08	09	10	11	12

BUTCH  
REVOLUTION

# REVOLUTION

SIZES: Adult S-XXL

AVAILABLE COLORS: Black, red

## FEATURES

- Our lightest and most comfortable glove
- Extensive use of mesh panels for maximum ventilation
- Single layer vented Nanofront® palm offers unrestricted feel and control whilst giving great durability
- Pre-curved tailoring for the best fit possible, and helps to eliminate arm pump
- Simple, slip-on design is lightweight and non-restrictive



black



red



## REVOLUTION GLOVE

Color	Part No.	S	M	L	XL	2X
Red	0384-6**	08	09	10	11	12
Black	0384-8**	08	09	10	11	12

# ELEMENT™

YOUTH  
OPTIONS

**SIZES:** Men 8-12 (13-15 in black only), Womens 6-10, Youth 1/2(XS)-7(XL)

**AVAILABLE COLORS:** Racewear: Black, white, red, orange, pink, hi-viz

## FEATURES

- Vented mesh top for increased airflow and cooling
- TPR strips for added protection from branches and debris
- Adjustable wrist with Hook and Loop closure for a secure fit
- Stretch Lycra® side panels for added comfort and flexibility
- Ergonomic padding and stitching on palm for increased comfort and dexterity
- Pre-curved tailoring for the best fit possible, and helps to eliminate arm pump

## ELEMENT YOUTH GLOVES

Graphic: Color	Part No.	XS	S	M	L	XL
Racewear: Black	0390-1**	01	03	05	06	07
Racewear: White	0390-2**	01	03	05	06	07
Racewear: Red	0390-3**	01	03	05	06	07
Racewear: Hi-Viz/Black	0390-5**	01	03	05	06	07
Racewear: Orange	0390-4**	01	03	05	06	07
Racewear: Girls Pink	0390-7**	01	03	05	—	—

## ELEMENT GLOVES

Graphic: Color	Part No.	S	M	L	XL	2X	13	14	15
Racewear: Black	0390-1**	08	09	10	11	12	13	14	15
Racewear: White	0390-2**	08	09	10	11	12	—	—	—
Racewear: Red	0390-3**	08	09	10	11	12	—	—	—
Racewear: Hi-Viz/Black	0390-5**	08	09	10	11	12	—	—	—
Racewear: Orange	0390-4**	08	09	10	11	12	—	—	—
Racewear: Pink	0390-7**	06	07	08	09	10	—	—	—



white



red



black



orange



pink



hi-Viz/blk



# MATRIX

YOUTH  
OPTIONS

**SIZES:** Adult S-XXL, Youth—in Racewear black/white only, 1/2(XS)-7(XL)

**AVAILABLE GRAPHICS:** Wingman, Racewear, Enigma, Vandal

## FEATURES

- Lightweight, uncomplicated design for superb feel and comfort while riding
- Simple design for great freedom-of-movement
- Long lasting and flexible materials for the perfect fit
- Super lightweight design with bold non-fade graphics
- Synthetic leather palm with double layer thumb reinforcement
- Pre-curved tailoring for the best fit possible, and helps to eliminate arm pump
- Slip-on

## MATRIX YOUTH GLOVES

Graphic: Color	Part No.	XS	S	M	L	XL
Racewear: Black/White	0388-5**	01	03	05	06	07

## MATRIX GLOVES

Graphic: Color	Part No.	S	M	L	XL	2X	13	14	15
Racewear: Black/White	0388-5**	08	09	10	11	12	13	14	15
Wingman: Wht/Red/Blu	0388-0**	18	19	20	21	22	—	—	—
Enigma: Black/White	0388-3**	78	79	80	81	82	—	—	—
Vandal: Black/Neon/Red	0388-4**	78	79	80	81	82	—	—	—

ENIGMA



blk/wht

WINGMAN



wht/red/blu

RACEWEAR



blk/wht

VANDAL



blk/neon/red



# BOOTS

- » RDX
- » ELEMENT
- » SHORTY
- » RIDER

## DOCTOR'S ORDERS

For boot development, we put our best foot forward! Dr. Doug Dubach has been an O'Neal test pilot for over 30 years and a Factory Yamaha test rider for over 25 years. As a 22 time Vet World Champion, nobody knows the importance of boot protection better than the Doctor. All O'Neal boots are thoroughly dirt tested and Doctor approved!



360° rubber gaitor seals out dirt and rocks

Pull-on nylon strap

Easy to clean upper nylon interior



Quick-dry air mesh lower interior

Rubber pull-tab hook and loop shin plate closure

One-piece TPU plastic floating upper body



Replacement ratchet, straps, buckles, rubber sole, foot bed insert, boot upper body and service kit are available



3 Aluminum Alloy double pin and "Lock Snap" buckles

Adjustable shin plate accommodates larger calf sizes in 3 settings for a custom fit

Wrap around embossed upper base layer

Dual compound rubber/plastic for extra flex at the bottom of the shin plate



Aluminum body "Vice Ratchet Strap" ensures the perfect, secure fit around the ankle



3 piece super grip and heat resistant rubber plates, for constant contact with the bike



"Full Tilt RDX Pivot System" allows maximum forward and rear motion

"Vice Ratchet Strap" garage for ratchet strap concealment

Padded microfiber foam tongue

Wrap around Gel and Latex foam interior ankle support

Vertical height adjustment allows a custom fit for taller riders

Pro style "Quick Shift Heel" for heel shifting on the start gate



Double reinforced stitch on a TPU plastic outer shell



Textured grip shift plate

Replaceable hard compound rubber sole insert

Slim toe box height for the perfect shift

Extended length steel shank

Ergonomically designed sole allows for both aggressive riding and comfortable walking

Plush EVA foam footbed insert with graphic print details

Double-layered cushioned heel

"Army Rubber" bonded sole with heavy duty adhesive and a hidden reinforced lock stitch



**THE RDX**  
V2.1MX.PRO.SERIES





# RDX BOOTS

SIZES: Adult 7-13

AVAILABLE GRAPHICS: White, Black

## FEATURES

- Aluminum body "Vice Ratchet Strap" ensures the perfect, secure fit around the ankle
- "Full Tilt RDX Pivot System" allows maximum forward and rear motion
- Adjustable shin plate accommodates larger calf sizes in 3 settings for a custom fit
- "Army Rubber" bonded sole with heavy duty adhesive and a hidden reinforced lock stitch
- 3 Aluminum Alloy double pin and "Lock Snap" buckles
- Vertical height adjustment allows a custom fit for taller riders
- 3 piece super grip heat resistant rubber plates, for constant contact with the bike
- Wrap around Gel and Latex foam interior ankle support
- Extended length steel shank
- Slim toe box height for the perfect shift
- Dual compound rubber/plastic for extra flex at the bottom of the shin plate
- Replacement parts: ratchet, straps, buckles, rubber sole, foot bed insert, boot upper body and service kit are available



white



black



## RDX BOOTS

Color	Part No.	7	8	9	10	10.5	11	12	13
Black	0328-***	107	108	109	110	210	111	112	113
White	0328-***	407	408	409	410	310	411	412	413



## ELEMENT & SHORTY

**SIZES:** Element; Adult 7-15, Shorty; Adult 7-13  
**AVAILABLE COLORS:** Element: Black, white  
 Shorty: Black

### FEATURES - ELEMENT

- Bonded sole
- Durable construction
- Fully adjustable four buckle closure system
- Tough sole with metal shank
- Injection molded plastic shin plate and protection
- Generous heel support and padding for added comfort
- Built in leather heat shield
- Replacement straps and buckles are available

### FEATURES - SHORTY

- Bonded sole
- Durable construction
- Fully adjustable two buckle closure system
- Tough sole with metal shank
- Injection molded plastic shift plate and ankle protection
- Generous heel support and padding for added comfort
- Built in heat shield
- Replacement straps and buckles are available



black



white



shorty

### ELEMENT & SHORTY BOOTS

Color	Part No.	6	7	8	9	10	11	12	13	14	15
Black	0322-1**	—	107	108	109	110	111	112	113	114	115
White	0322-2**	—	07	08	09	10	11	12	13	114	115
Shorty	0344-1**	06	07	08	09	10	11	12	13	—	—

# RIDER

YOUTH  
OPTIONS

**SIZES:** Mens 7-15, Womens 5-12, Youth 1-6, PeeWee K10-K13

**AVAILABLE COLORS:** Mens black, white, black/hi-viz, blue/red/white. Womens black/pink. Youth/PeeWee black or black/pink

## FEATURES

- Injection molded plastic plates protect against impacts
- Metal shank insert reinforces the shape of the boot and adds support
- Easy to operate, Snap-Lock adjustable four buckle closure system
- Durable Goodyear welt sole is properly balanced with no unstable rocking
- Metal toe guard to protect the sole against delaminating
- Moderate grip sole is great for track, trail and ATV riders
- Air mesh interior, generous heel support and cushioned insole for extra comfort
- Synthetic leather heat shield to prevent heat damage
- Rear pull tab for extra leverage
- Replacement straps and buckles are available



black



black/hi-viz



blue/red/white



black/pink

## RIDER YOUTH/PEEWEE BOOTS

Color	Part No.	K10	K11	K12	K13	1	2	3	4	5	6
Black	0324-1**	97	98	99	00	01	02	03	04	05	06
Black/pink	0324-7**	—	—	99	00	01	02	03	04	—	—

## RIDER ADULT BOOTS

Color	Part No.	5	6	7	8	9	10	11	12	13	14	15
Black	0324-1**	—	—	07	08	09	10	11	12	13	14	15
Blue/red/wht	0324-5**	—	06	07	08	09	10	11	12	13	—	—
Black/hi-viz	0324-8**	—	06	07	08	09	10	11	12	13	—	—
Black/pink	0324-7**	05	06	07	08	09	10	11	12	—	—	—



youth & peewee



v-twin

hunter

wingman

bomber



eagle

usa

enigma

victory



woods camo

islands

xray

crossbones



# MX SOCKS

YOUTH  
OPTIONS

**SIZES:** Adult one-size, Youth options one-size  
**AVAILABLE GRAPHICS:** Xray, Xoxo, Crossbones, Islands, Bomber, Wild, Hunter, Wingman, Victory, Afterburner, Woods Camo, V-Twin, Eagle, Enigma, USA

## FEATURES - PRINT SOCKS

- Knee-high sock height
- Moisture wicking materials
- Thick knit in heel and sole for comfort and shock absorption
- High density materials for durability
- Ribbed arch and ankle for a secure fit
- Composition: 80% Acrylic, 15% Polyamide, 5% Spandex

## MX YOUTH SOCKS

Graphic	Part No.
Xray	0356-723
Xoxo	0356-722
Bomber	0356-724

## MX SOCKS

Graphic	Part No.
Xray	0356-602
Xoxo	0356-604
Crossbones	0356-609
Wild	0356-704
V-Twin	0356-720
Woods Camo	0356-718
Islands	0356-731
USA	0356-729
Hunter	0356-733
Wingman	0356-734
Enigma	0356-732
Victory	0356-713
Eagle	0356-721
Bomber	0356-703



wild

xoxo



# PROTECTION

- » CHEST/BODY
- » BAJA JACKET
- » PADDED SHORT
- » KIDNEY BELT
- » KNEE/SHIN

## PROTECT YOURSELF

For 47 years it has been about protection. Protection from debris, roost, rocks, and branches. O'Neal offers the extra layer of protection that apparel just cannot provide. When it comes to safety and function, O'Neal's full line of protection provides sizes, features, and function for every type of rider on every type of terrain.





# UNDERDOG

## UNDERDOG III

NECK  
BRACE  
*Compatible*

SIZES: Adult S-XXL

AVAILABLE COLORS: Black

### FEATURES

- Constructed from high-impact resistant, injection molded plastic, and IPX® material designed to protect your: shoulders, elbows, forearms, chest, and back
- IPX® back protector extends from the base of the neck to lower back; helping ensure complete protection where you need it most
- 9 areas of adjustment for the perfect fit
- Back protector zips off for easy cleaning
- Extensive mesh venting helps keep you cool while riding
- Adjustable elastic kidney belt with Hook and Loop closure for a secure fit
- Neck brace compatible

### UNDERDOG III BODY ARMOR

Version: Color	Part No.	S	M	L	XL	2X
Underdog III	0571-4**	02	03	04	05	06





# UNDERDOG II

YOUTH  
OPTIONS

SIZES: Youth S-L

AVAILABLE COLORS: Black

## FEATURES

- Constructed with high impact injection molded plastic to deflect dirt and debris
- Articulated back protector for increased mobility
- Removeable back, elbow and forearms
- Adjustable elastic kidney belt with hook and loop closure
- Extensive mesh and padded foam venting to help keep cool
- 9 areas of adjustment for the perfect fit



## UNDERDOG II YOUTH BODY ARMOR

Version: Color	Part No.	S	M	L
Underdog II	0571-3**	02	03	04



UNDERDOG II

# HOLESHOT PROTECTOR

NECK  
BRACE  
Compatible

SIZES: Adult M/L

AVAILABLE COLORS: Black

## FEATURES

- Neck brace compatible
- Articulated back protector for increased mobility
- Airprene® shoulder padding for comfort
- Integrated waist closure system
- Vented foam padding to keep you cool



HOLESHOT

## HOLESHOT PROTECTOR

Version: Color	Part No.	M/L
Holeshot Protector: Black	1285-0**	04

# PXR PROTECTOR

SIZES: Adult M-L (one-size)  
AVAILABLE COLORS: Black, white

## FEATURES

- Neck brace compatible
- Articulated back protector for increased mobility
- Integrated chest closure system
- Venting throughout
- Extensive shoulder and bicep protection



black



white



PXR PROTECTOR



## PXR PROTECTOR

Color	Part No.
White	0734-001
Black	0734-101

TRAIL SHORT



## TRAIL SHORT

SIZES: Adult S-XXL  
 AVAILABLE COLORS: Lime/black

- FEATURES**
- High-density, EVA foam for added protection in the key impact zones of hips, thighs, and coccyx (tail bone)
  - Pads are ergonomically designed to be as comfortable and unobtrusive as possible when worn under riding shorts and pants
  - Flat double seams, elasticated waist and legs, and Spandex mesh legs provide a great fit for comfortable riding
  - Coolmax® chamois inset for added comfort

### TRAIL SHORT

Color	Part No.	S	M	L	XL	2X
Lime/black	1288-0**	02	03	04	05	06

ELEMENT



### ELEMENT KIDNEY BELT

Color	Part No.	M/L	XL
Black	0733-1**	00	01

### ELEMENT YOUTH KIDNEY BELT

Color	Part No.	ONE-SIZE
Black	0733-1**	02

## ELEMENT BELT



SIZES: Adult M/L&XL, Youth one-size

- FEATURES**
- Provides lower back support when riding
  - Gentle compression helps protect lower abdomen and internal organs
  - Gives an extra layer of coverage in the event of a crash
  - Ergonomic design provides maximum lumbar support combined with comfort to the sides and back
  - Adjusted with 2 external Velcro® closure straps to fit a wide range of sizes

# BAJA JACKET

NECK  
BRACE  
*Compatible*

SIZES: Adult S-XXL

AVAILABLE COLOR: Black

## FEATURES

- Windproof, water-repellent shell
- Width adjustment in collar for added comfort
- Protector pockets on shoulder and elbow to insert impact foam
- Waterproof front zipper
- 9 water-resistant pockets
- Vent zipper
- Size adjustable sleeves
- Reflective patches
- Hydration bladder and hose compatible
- Adjustment straps for neck brace
- Document pocket on sleeve
- Removable sleeves



## BAJA JACKET

Color	Part No.	S	M	L	XL	2X
Black	1104-1**	02	03	04	05	06



# PRO III

SIZES: Adult, one-size  
 AVAILABLE COLORS: Black

## FEATURES

- Comfortable knee-shin pad to use under your riding pants
- Perfect for MX, MTB, or BMX (short shins fit inside boots)
- Tough plastic knee cap and shin guard
- Articulated joint between knee and shin provides excellent movement while riding
- Adjustable elastic straps with Hook and Loop closures provide a secure, snug, and comfortable fit



## PRO III KNEE GUARDS

Type:	Color	Part No.
Knee:	Black	0251-201

PRO III

# PEEWEE PROTECTION



SIZES: PeeWee S/M & L/XL, Knee Guard; one-size  
 AVAILABLE COLOR: Black/gray

## FEATURES - CHEST PROTECTOR

- Lightweight flexible and comfortable foam chassis design
- Injected molded plastic shoulder pads
- TPR Chest and Back protection for supreme protection
- Adjustable straps for the perfect fit
- S/M – fits ages 2-5yrs.  
 Approximately 35-40in tall, 28-40lbs
- L/XL – fits ages 5-7yrs.  
 Approximately 40-50in tall, 38-55lbs

## FEATURES - KNEE GUARD

- Lightweight flexible and comfortable foam chassis design
- Injected molded plastic shoulder pads
- Adjustable straps for the perfect fit

## FEATURES - ELBOW GUARD

- Lightweight flexible and comfortable foam chassis design
- Injected molded plastic shoulder pads
- Adjustable straps for the perfect fit



peewee: chest

peewee: knee

peewee: elbow

PEEWEE PROTECTION			
Type	Part No.	S/M	L/XL
Chest	0251-3**	00	01
Knee	0251-312	—	—
Elbow	0251-3**	10	11

# ACCESSORIES

- » GRIPS
- » GARBAGS
- » UMBRELLA
- » BLANKET
- » STICKERS

## ACCESSORIES

A day at the track is not the same without the proper essential accessories. Don't leave home without them!



# GRIPS

TYPES: Full Diamond, Half Waffle, D2 Half Waffle, Open-Ended Half Waffle, ATV Half Waffle

## FEATURES - HALF WAFFLE

- Built in groove for safety wire
- Medium compound material
- Half waffle pattern
- Closed end
- Sold in pairs
- For use on twist throttles

## FEATURES - FULL DIAMOND

- Medium compound material
- Diamond pattern
- Closed end
- Sold in pairs
- For use on twist throttles

## FEATURES - HALF WAFFLE D2

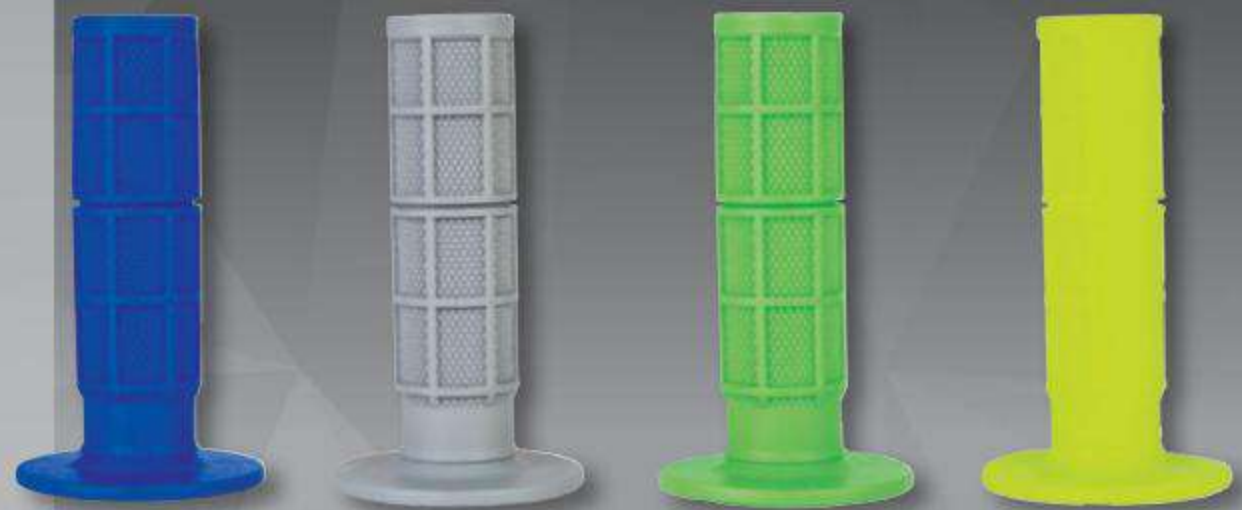
- Dual compound material
- Waffle pattern
- Closed end
- Sold in pairs
- For use on twist throttles

## FEATURES - HALF WAFFLE ATV

- Smaller diameter flange
- Medium compound material
- Waffle pattern
- Closed end
- Sold in pairs

## FEATURES - OPEN ENDED

- Hand guard ready open ended grip design
- Medium compound material
- Waffle pattern
- Sold in pairs
- For use on twist throttles



½ waffle: blue

½ waffle: gray

½ waffle: neon grn

½ waffle: neon yel



½ waffle: neon orange

½ waffle: neon pink

½ waffle: red

½ waffle: black



waffle d2: blk/blu

waffle d2: blk/org

waffle d2: blk/red

not shown:  
open ended  
atv half waffle

## MX GRIPS

Type: Color	Part No.
Waffle: Blue	7160-700
Waffle: Black	7160-701
Waffle: Gray	7160-702
Waffle: Red	7160-703
Waffle: Neon Green	7160-704
Waffle: Neon Pink	7160-705
Waffle: Neon Yellow	7160-706
Waffle: Neon Orange	7160-707
Diamond: Blue	7160-200
Diamond: Black	7160-201
Diamond: Gray	7160-202
Diamond: Red	7160-203
Diamond: Neon Green	7160-204
Diamond: Neon Pink	7160-205
Diamond: Neon Yellow	7160-206
Diamond: Neon Orange	7160-207
D2 Waffle: Blk/blue	7160-800
D2 Waffle: Blk/gray	7160-801
D2 Waffle: Blk/orange	7160-802
D2 Waffle: Blk/red	7160-803
ATV: Black	7160-900
OEN Waffle: Black	7160-901
OEN Diamond: Black	7160-902

# MOTO UMBRELLA

SIZES: One-size

AVAILABLE COLOR: Black/white

## FEATURES

- Starting gate approved!
- Large 46" diameter when open
- Ergonomic grip
- Storage sleeve
- 37" height



## MOTO UMBRELLA

Item	Part No.
Moto Umbrella	3069-101

# GEAR BAGS

SIZES: 8000 cubic inches, 2000 cubic inches

AVAILABLE COLOR: Black

## FEATURES - TX-8000 GEAR BAG

- Dimensions: 34 in x 15 in x 17 in
- One main compartment, two end boot compartments, and 1 side pocket
- Durable 600D Polyester
- Detachable padded shoulder strap
- Heavy duty zippers and bold graphics

## FEATURES - TX-2000 GEAR BAG

- Dimensions: 22 in x 9 in x 11 in
- One main compartment, and 2 side pocket
- Durable 300D Polyester
- Detachable padded shoulder strap
- Heavy duty zippers and bold graphics



tx-2000



tx-8000

## GEAR BAGS

Type: Color	Part No.
TX-8000: Black	1315-200
TX-2000: Black	1320-100



## STADIUM BLANKET

SIZES: 60" x 80"

AVAILABLE COLOR: Skizm Blue/red

### FEATURES

- Large, thick fleece stadium blanket that's perfect for a night at the races

### STADIUM BLANKET

Item	Part No.
Stadium Blanket	1115-003



STADIUM BLANKET

## TRACK STICKERS

SIZES: 16 inch, 5 inch

AVAILABLE COLOR: Black, Hi-Viz, Moto XXX

MX Track Sticker 16"

MX Track Sticker 5"

Moto XXX Sticker 5"

### TRACK STICKER

Item: Color	Part No.
Track Sticker 16": black	5010-201
Track Sticker 5": black	5010-022
Track Sticker 5": hi-viz	5010-023
Moto XXX 5"	5010-024



5": black



5": hi-viz



5": moto xxx



16": black

# BLUR OPTICS

- » B-1
- » B-FLEX
- » B-ZERO

## STAY FOCUSED

It's time to take a look and see things more clearly. Blur Optics are crafted using premium materials for optimal vision while riding. In any condition and along any terrain, Blur is sure to allow you to stay focused and keep your eyes on the finish line!





# B-1 GOGGLES

SIZES: Adult

AVAILABLE GRAPHICS: Flat, Ice Breaker, Okinawa

## FEATURES

- Triple foam, inner-frame lining, for optimal: comfort, durability, and moisture wicking
- Double silicone on goggle strap provides extra grip on Helmet
- Microfiber bag included for protection when goggles are not in use, and for scratch-free cleaning
- Replaceable lenses
- Lens made from lightweight and tough Lexan®, with 100% UV protection
- Anti-scratch coating for durability
- Anti-fog lens
- Tear-off pins



black/red

ICE BREAKER



black/orange

FLAT

## B-1 GOGGLE

Graphic: Color	Part No.
Flat: Black/orange	6023-220
Flat: Hi-viz	6023-221
Flat: Green/white	6023-222
Ice Breaker: Black/red	6023-223
Okinawa: Yellow/orange	6023-224
Okinawa: Green/yellow/purple	6023-225

## B-1 LENSES & TEAR OFFS

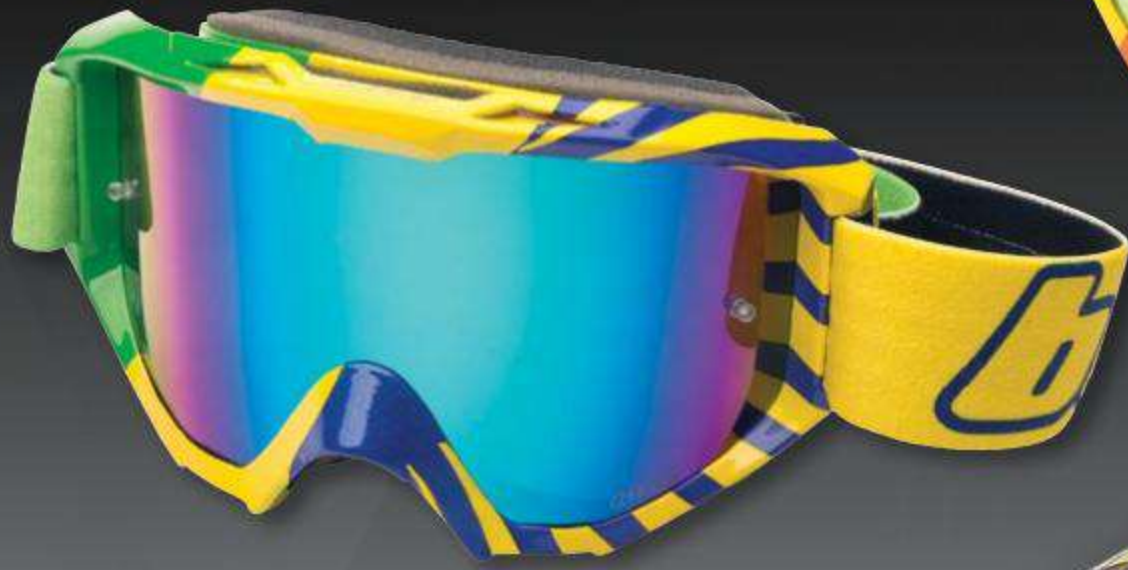
Type	Part No.
Clear	6021-901
Smoke	6021-902
Iridium	6021-903
Tear Offs: 20 pack	6021-910



green/white



hi-vis

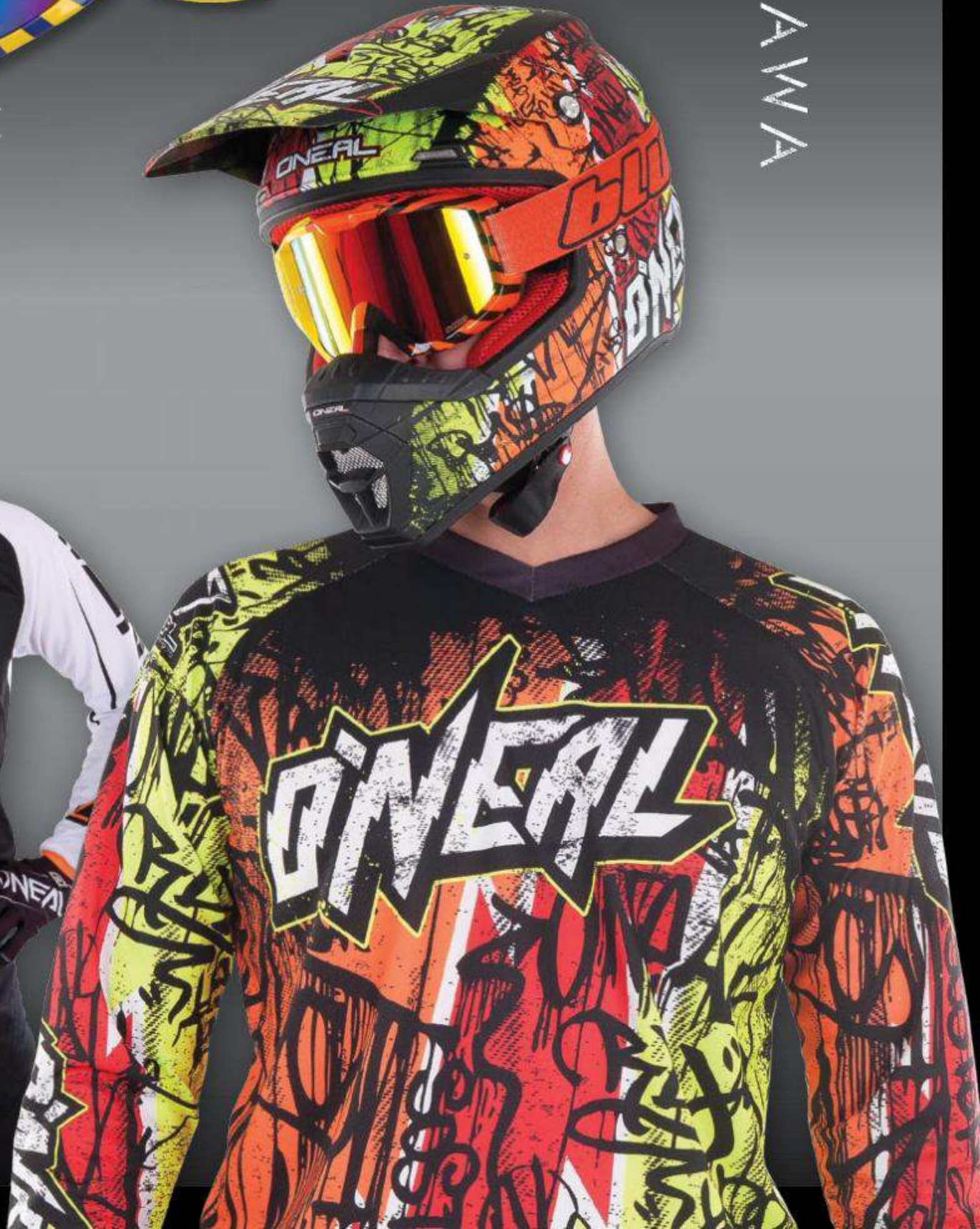


green/yellow/purple



yellow/orange

OKINAWA



# B-FLEX GOGGLES

YOUTH  
OPTIONS

**SIZES:** Adult, Youth

**AVAILABLE COLORS:** Black, White, ETR, Hendrix, Launch, Villain

## FEATURES

- Triple foam for optimum comfort, durability and moisture wicking
- Triple silicone on goggle strap for optimum grip on Helmet
- Replaceable lenses
- Lens made from lightweight and tough Lexan® with 100% UV protection
- Anti-scratch coating for durability
- Anti-fog lens
- Tear-off pins

## YOUTH B-FLEX GOGGLE

Graphic: Color	Part No.
Youth White	6024-304
Youth Black	6024-310

## B-FLEX GOGGLE

Graphic: Color	Part No.
Flat: White	6024-204
Flat: Black	6024-210
Villain: Multi	6024-211
ETR: Yellow/red	6024-220
Hendrix: Black/green Iridium	6024-221
Hendrix: Black/white Iridium	6024-222
Hendrix: White/pink Iridium	6024-223
Launch: Hi-Viz Iridium	6024-224
Launch: Black/blue Iridium	6024-225

## B-FLEX LENSES & TEAR OFFS

Type	Part No.
Clear	6021-700
Smoke	6021-701
Iridium	6021-710
Tear Offs: 20 pack	6021-709



villain: multi



hendrix: white/pink



etr: yellow/red



hendrix: black/green



hendrix: black/white



launch: hi-viz



black

# B-ZERO GOGGLES

## B-ZERO GOGGLES

YOUTH  
OPTIONS

SIZES: Adult, Youth

AVAILABLE COLORS: White, Black, Red, Blue, Hi-Viz, Neon Orange, Pink, OTG Black(Adult only)

### FEATURES

- Lightweight and flexible frame
- Anti-fog, UV400 lens
- Perimeter ventilation
- Anti-fog lens
- Single layer foam
- Double buckle and high quality strap with silicone grip
- Over The Glasses option available in black (OTG)



hi-viz



white



black

## YOUTH B-FLEX GOGGLE

Graphic: Color	Part No.
Black	6030-100
White	6030-101
Red	6030-102
Blue	6030-103
Hi-Viz	6030-104
Orange	6030-105
Pink	6030-106

## B-ZERO GOGGLE

Graphic: Color	Part No.
Black	6030-000
White	6030-001
Red	6030-002
Blue	6030-003
Hi-Viz	6030-004
Orange	6030-005
OTG: Black	6030-006
Pink	6030-007





blue



orange



pink



red



otg black

OTG







# MOTO XXX

- » HELMETS
- » JERSEYS
- » T-SHIRTS
- » HEADWEAR
- » ACCESSORIES

## MOTO XXX

Back in '94 the most unlikely of characters joined together to change our sport and the industry forever! Moto XXX burst onto the scene with a vengeance releasing the Moto XXX videos and launching their own race team to compete in Supercross. Made up of misfits, degenerates and those that have been cast aside, Moto XXX entered the supercross pits for round one in a funky-ass box van with a crazy paint scheme, carrying two riders, who were far too edgy for a corporate sponsor. With music blaring, hot chicks flocking and free promo items flying, the pits became a party scene centered around the new Moto XXX team! One round later the team shocked the world as Brian Deegan won the night's 125 Supercross event launching his bike on a ghost-ride as he crossed over the finish line!

Moto XXX went on to be the most infamous privateer team in racing history. Racer X magazine named the team "An American Icon who in fact changed the face of Motocross and freestyle forever!"

Moto XXX developed into a complete MX culture. It has captured it's culture exclusively in the Moto XXX line of casual for your daily debauchery. Wear it out!

# WORLD TOUR & PBX HELMET

SIZES: Adult XS-XXL

AVAILABLE COLORS: PBX and World Tour

## FEATURES

- Lightweight poly-injected construction
- Shell weight 1350 grams  $\pm$  50 (Size L)
- Ultra-plush, removable & washable comfort liner
- Full shell venting for improved aerodynamics and overall cooling
- State of the art designed aerodynamic shell and visor
- Side goggle traction pad keeps goggle strap securely in place
- Meets or exceeds DOT, ECE 22-05, & AUS safety standards
- Replacement liners / cheek pads and visors available

## MOTO XXX HELMETS

Graphic	Part No.	XS	S	M	L	XL	2X
World Tour	0622-3**	01	02	03	04	05	06
PBX	0622-4**	01	02	03	04	05	06

MOTO XXX



world tour



WORLD TOUR



pbx



PBX

# ORIGINAL JERSEY

SIZES: Adult S-XXL

AVAILABLE COLORS: Black/White, Black/Hi-Viz, Vented White

## FEATURES - JERSEY

- Athletic fit
- Slim cuffs and collar
- 3" tail to help keep jersey tucked in

## FEATURES - VENTED JERSEY

- Athletic fit
- Slim cuffs and collar
- 3" tail to help keep jersey tucked in
- Large hole mesh for extensive cooling



black/hi-viz

## MOTO XXX JERSEYS

Graphic: Color	Part No.	S	M	L	XL	2X
Original: Black/White	0041-1**	02	03	04	05	06
Original: Black/Hi-Viz	0041-2**	02	03	04	05	06
Original: White	0041-4**	02	03	04	05	06



black/white



vented white

# MOTO XXX 100 TEES

SIZES: Adult S-XXL

AVAILABLE GRAPHICS: Wheelie, Speed Demon, OG Character, Hard Pack, '97 Replica, Free Rides, Gasket, Grom, Bad Kid, Stacked, Wrench

## FEATURES

- 100% Ringspun Cotton
- Tagless neck label design
- Soft touch screen printed graphics

## MOTO XXX 100 TEES

Graphic	Part No.	S	M	L	XL	2X
Wheelie	1024-3**	22	23	24	25	26
Speed Demon	1024-0**	72	73	74	75	76
OG Character	1024-1**	02	03	04	05	06
Hard Pack	1024-2**	72	73	74	75	76
'97 Replica	1024-3**	32	33	34	35	36
Free Rides	1024-3**	42	43	44	45	46
Gasket	1024-3**	52	53	54	55	56
Grom	1024-3**	62	63	64	65	66
Bad Kid	1024-4**	02	03	04	05	06
Stacked	1024-4**	12	13	14	15	16
Wrench	1024-4**	22	23	24	25	26



stacked



free rides



grom





wrench



wheelie



speed demon



bad kid



hard pack



og character



97' replica (back)



97' replica (front)



gasket

# MOTO XXX 50/50 TEES

SIZES: Adult S-XXL

AVAILABLE GRAPHICS: Savage, Skully, Circuit, Evolve, Pre-Mix

## FEATURES

- 50% Ringspun combed Cotton, 50% Polyester
- Tagless neck label design
- Soft touch screen printed graphics

## MOTO XXX 50/50 TEES

Graphic	Part No.	S	M	L	XL	2X
Circuit	1024-2**	82	83	84	85	86
Evolve	1024-2**	92	93	94	95	96
Pre-Mix	1024-3**	72	73	74	75	76
Savage	1024-3**	82	83	84	85	86
Skully	1024-3**	92	93	94	95	96



pre-mix



evolve



circuit



skully



savage



# HEADWEAR

SIZES: One size fits most

AVAILABLE COLORS: OG, Ninety Four, International, Beanie

## FEATURES - HAT

- Snapback with woven patch detailing

## FEATURES - BEANIE

- Acrylic knit with woven patch detailing

### MOTO XXX HEADWEAR

Graphic	Part No.
OG hat	1025-001
Ninety Four	1025-002
International	1025-003
Beanie	1025-004



beanie



og hat



ninety four



international

# 5" STICKER

SIZES: 5" PVC sticker



5": moto xxx

# MOTO XXX WALLET

Water-resistant, tear-resistant, slim design wallet made of Tyvek® material to withstand years of punishment and abuse

## FEATURES

- 2 large pockets for cash and receipts
- 2 credit card pockets that can hold multiple cards
- 2 business card pockets



moto xxx wallet

### MOTO XXX ACCESSORIES

Item	Part No.
Sticker	5010-024
Wallet	1025-200





**FAIR PATRIOT T-SHIRT**

Color	Part No.	M	L	XL	2X
Patriot	4500-4**	33	34	35	36

**FAIR GLOVE**

Color	Part No.	6	7	8	9	10	11	12
Black	4373-1**	06	07	08	09	10	11	12



**ATV  
ONLY**

**FAIR**



**ATV RACING APPAREL**

## STAND OUT FROM THE CROWD!

Our exclusive custom One-Piece jersey Name & Number lettering and Sponsor logos once only available to Pro Riders, are now available to everyone! Working with our top riders Blake Baggett and Kyle Chisholm, we have perfected our printing materials to maximize visibility while maintaining a durable print that will go the distance through every moto and every wash! You can now get your jersey lettering and sponsor logos applied to your jersey and done by a professional O'Neal designer to get that factory look!

We offer two fonts (Rally & Depot) in either Black or White allowing you, the rider, to truly customize the look of your jersey. Can't decide which color will look best? No problem, you can allow a professional O'Neal Designer to choose which color will look best on your particular jersey.

Want to represent your personal sponsors on the track in style? We are here to help you get that professional look! O'Neal artists have hundreds of major Motocross and Bicycle company logos on file ready for your jersey. If you should need a custom logo (IE Non Moto Company, Local Shop Logo) an O'Neal Designer can convert your logo into a printable jersey transfer.



Hardware  
Flow Jag



Step 1. Choose your jersey | Step 2. Add your name and number | Step 3. Choose a font & Color | Step 4. Add your sponsor logos.

## RALLY

**SMITH**  
**123**

**ABCDEFGHIJKLMNOPQRSTUVWXYZ**  
**0123456789**

## DEPOT

**SMITH**  
**123**

**ABCDEFGHIJKLMNOPQRSTUVWXYZ**  
**0123456789**

## SPONSORS

Choose from hundreds of sponsors already on file or have an O'Neal designer help you add your own logo.





# STREET GEAR

# COMMANDER BT

**SIZES:** Adult size XS-XXL

**AVAILABLE COLORS:** White, Black, Flat black, Hi-Viz

## FEATURES

- Meets DOT/ECE safety standards
- Anti-scratch & anti-fog shield
- Built-in drop-down sun visor
- Removable and washable microfiber suede liner and cheek pads
- Fully adjustable flow-through ventilation
- Integrated aerodynamic spoiler
- Double D-ring chin strap with retention system
- Adjustable nylon chin strap with secure snap
- FCC approved
- Bluetooth 2.0 technology
- 10 hours talk time, 130 hours standby
- 2 high quality speakers with full stereo sound
- 100 foot rider to rider intercom
- Listen to gps voice commands
- One touch control for call answering, rejecting, and redialing
- Incoming phone call overrides intercom, music, and navigation audio
- Lithium-polymer battery with a power charger
- Replacement parts available



white



black



flat black



hi-viz

## O'NEAL COMMANDER BLUETOOTH HELMET

Color	Part No.	XS	S	M	L	XL	2X
Black	0807-1**	01	02	03	04	05	06
White	0807-2**	01	02	03	04	05	06
Flat Black	0807-4**	01	02	03	04	05	06
Hi-Viz	0807-6**	01	02	03	04	05	06

# BUTCH CARBON

**SIZES:** Adult S-XXL

**AVAILABLE COLORS:** Black

## FEATURES

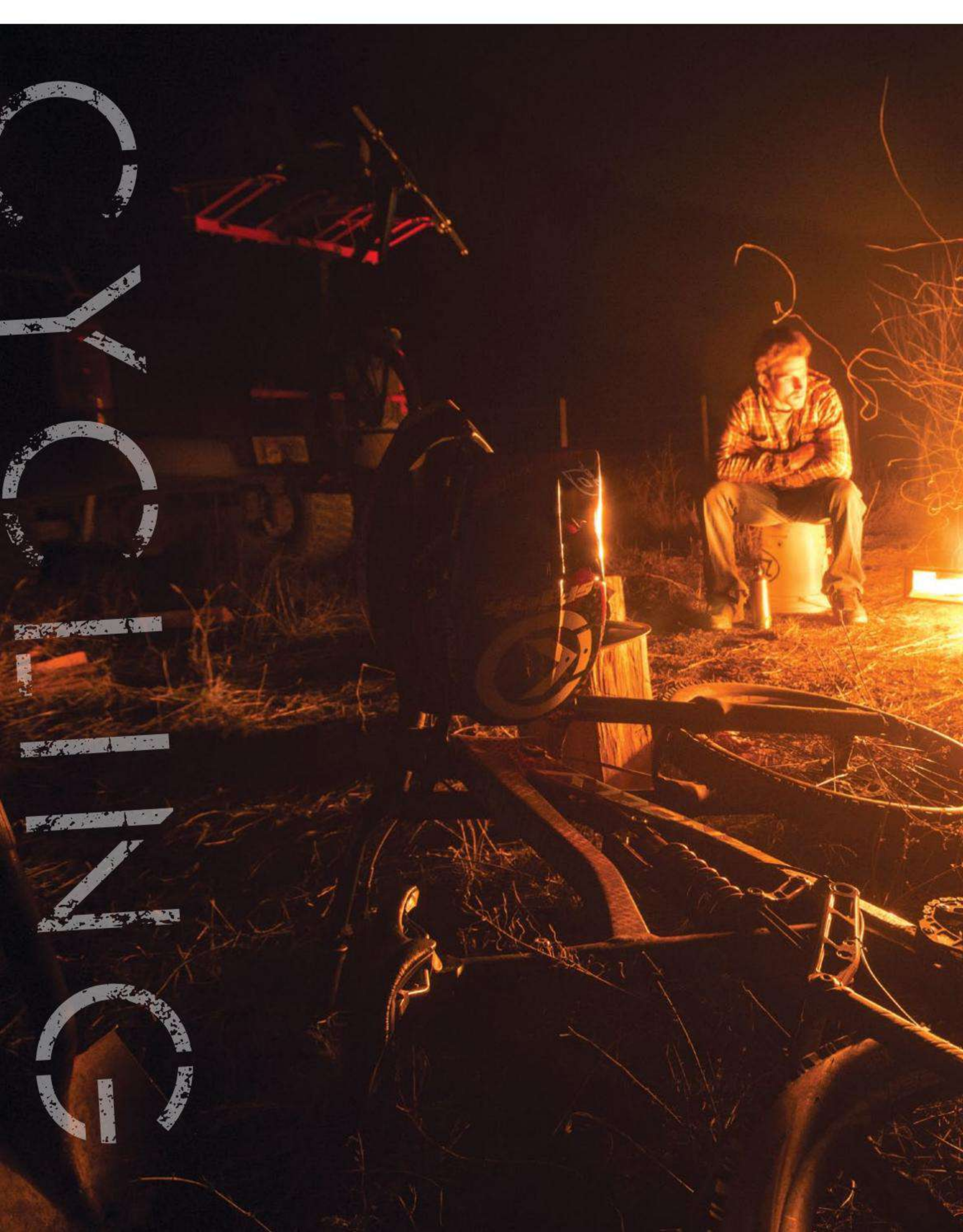
- Polycarbonate, ballistic coverage, on individual knuckles delivers added confidence while maintaining dexterity
- Additional TPR and direct injection patches on top side of fingers and wrist
- Double layer Clarino® palm padding helps reduce blisters and prevent glove stiffening after drying
- Seamless, silicone rollover fingertips, for enhanced lever control
- Long-lasting, durable, and flexible materials for superior comfort
- Adjustable Hook and Loop wrist closure for secure and adjustable fit
- Pre-curved tailoring for the best fit possible, and helps to eliminate arm pump



## BUTCH CARBON

Color	Part No.	S	M	L	XL	2X
Black	0468-1**	08	09	10	11	12

Q  
K  
C  
L  
Z  
Q







» O'NEAL  
» AZONIC

### CYCLING GEAR & PARTS

Our passion for riding has never stopped. For 47 years we have been creating the finest in apparel, parts and accessories for those that are hitting it on 2 wheels. The Cycling apparel and product lines have been produced without compromise. No matter what type of terrain O'Neal and Azonic are proud to provide you with the proper equipment to take the punishment.



- » FURY RL II
- » PIKE ENDURO
- » DEFENDER

## MTB HELMETS

Protect your greatest asset - while none of us go riding thinking we are going to crash hard, we all know it happens. Having the right helmet is critical. The O'Neal 2017 helmets come in a variety of styles, tested to safety standards. All O'Neal helmets are designed using the latest technology, allowing your head to stay cool with multiple vents and ultra-plush liners, and at the same time provide the ultimate protection. Our Fidlock® magnetic buckle technology allows single-handed fastening and release. Once you've used it, you won't go back!



# HELMETS



# FURY RL II

SIZES: Adult XS-XL

AVAILABLE GRAPHICS: Afterburner, Matte black

## FEATURES

- Detachable GoPro® Mount
- Lightweight (950g) ABS Shell
- Multiple Vents and channels for increased airflow
- Sweat-absorbing and removable, washable inner liner
- O'Neal Fidlock® magnetic buckle for easy, single-handed fastening and release
- Height adjustable visor
- Exceeds CPSC safety standard for bicycle helmets

## FURY RL II HELMET

Graphic: Color	Part No.	XS	S	M	L	XL
Afterburner: Blk/Wht	0499-8**	01	02	03	04	05
Matte: Black	0499-0**	01	02	03	04	05



afterburner  
black/white



matte  
black



FURY



# PIKE ENDURO

SIZES: Adult SM/MD, LG/XL  
 AVAILABLE GRAPHICS: White/Blue, Black/Yellow

## PIKE ENDURO HELMET

Graphic: Color	Part No.	SM/MD	LG/XL
White/Blue	0009-0**	30	31
Black/Yellow	0009-0**	10	11

### FEATURES

- Enduro/ Trail/ Freeride helmet with In-mold Technology for increased impact protection and energy dispersion
- Polycarbonate shell, EPS liner, Coolmax® pads
- Lightweight construction
- Extended coverage at the back of the head
- Equipped with Fidlock® Magnetic Buckle
- Unique 'Dual-Flow' System with over-sized vents for improved and constant air circulation inside the helmet
- 3D Multi-Positioning System for perfect adjustment in 3 directions: up-down, front-rear, open-close
- Exceeds CPSC safety standard for bicycle helmets



white/blue



black/yellow





tribal  
white/gray



tribal  
gray/yellow



tribal  
black/red



flat  
black/white



flat  
spearmint



## DEFENDER



SIZES: Adult SM/MD, LG/XL

AVAILABLE GRAPHICS: Black/White, Spearmint, White/Gray, Gray/Yellow, Black/Red

### FEATURES

- Lightweight Enduro/ Trail/ AM helmet
- Inmold Technology fuses the inner EPS and shell together enabling the helmet to be lighter, more durable and better ventilated
- O'Neal Fidlock® magnetic buckle for easy, single-handed fastening & release
- Weight: 360g (± 25g)
- Micro-adjustable single-handed retention system
- Additional coverage at the back of the head
- Fast-wicking, quick-drying, removable & washable lining
- Large vents for improved airflow
- Detachable visor
- Exceeds CPSC safety standard for bicycle helmets

### DEFENDER HELMET

Graphic: Color	Part No.	SM/MD	LG/XL
Flat: Black/White	0502-7**	01	02
Flat: Spearmint	0502-9**	20	21
Tribal: White/Gray	0502-4**	01	02
Tribal: Gray/Yellow	0502-6**	01	02
Tribal: Black/Red	0502-2**	01	02



# SHIELD GLOVES

- » ELEMENT
- » MATRIX
- » JUMP
- » BUTCH
- » AMX

## FITS LIKE A GLOVE

It's rare to find hand protection that fits like a glove, feels as natural as your skin, and protects you from crashing. After more than 45 years of non-stop product development, you sort of get a feel for things. O'Neal gloves are made to wear better than most, without sacrificing the freedom-of-movement and feel you need while riding. Whether you prefer padding or minimalist design; slip-on or Hook and Loop closures, we have gloves to suit all riders.



# ELEMENT



**SIZES:** Men 8-12 (13-15 in black only), Womens 6-10, Youth 1/2(XS)-7(XL)

**AVAILABLE COLORS:** Racewear: Black, White, Red, Orange, Pink, Hi-Viz

## FEATURES

- Vented mesh top for increased airflow and cooling
- TPR strips for added protection from branches and debris
- Adjustable wrist with Hook and Loop closure for a secure fit
- Stretch Lycra® side panels for added comfort and flexibility
- Ergonomic padding and stitching on palm for increased comfort and dexterity
- Pre-curved tailoring for the best fit possible, and helps to eliminate arm pump

## ELEMENT YOUTH GLOVES

Graphic: Color	Part No.	XS	S	M	L	XL
Racewear: Black	0390-1**	01	02	03	04	05
Racewear: White	0390-2**	01	02	03	04	05
Racewear: Red	0390-3**	01	02	03	04	05
Racewear: Hi-Viz/Black	0390-5**	01	02	03	04	05
Racewear: Orange	0390-4**	01	02	03	04	05
Racewear: Girls Pink	0390-7**	01	03	05	—	—

## ELEMENT GLOVES

Graphic: Color	Part No.	S	M	L	XL	2X	13	14	15
Racewear: Black	0390-1**	08	09	10	11	12	13	14	15
Racewear: White	0390-2**	08	09	10	11	12	—	—	—
Racewear: Red	0390-3**	08	09	10	11	12	—	—	—
Racewear: Hi-Viz/Black	0390-5**	08	09	10	11	12	—	—	—
Racewear: Orange	0390-4**	08	09	10	11	12	—	—	—
Racewear: Pink	0390-7**	06	07	08	09	10	—	—	—



white



red



black



orange



pink



hi-viz/black





# MATRIX



**SIZES:** Adult S-XXL, Youth—in Racewear black/white only, 1/2(XS)-7(XL)

**AVAILABLE GRAPHICS:** Wingman, Racewear, Enigma, Vandal

## FEATURES

- Lightweight, uncomplicated design for superb feel and comfort while riding
- Simple design for great freedom-of-movement
- Long lasting and flexible materials for the perfect fit
- Super lightweight design with bold non-fade graphics
- Synthetic leather palm with double layer thumb reinforcement
- Pre-curved tailoring for the best fit possible, and helps to eliminate arm pump
- Slip-on

## MATRIX YOUTH GLOVES

Graphic: Color	Part No.	XS	S	M	L	XL
Racewear: Black/White	0388-5**	01	03	05	06	07

## MATRIX GLOVES

Graphic: Color	Part No.	S	M	L	XL	2X	13	14	15
Racewear: Black/White	0388-5**	08	09	10	11	12	13	14	15
Wingman: Wht/Red/Blu	0388-0**	18	19	20	21	22	—	—	—
Enigma: Black/White	0388-3**	78	79	80	81	82	—	—	—
Vandal: Black/Neon/Red	0388-4**	78	79	80	81	82	—	—	—

ENIGMA



enigma  
black/white

WINGMAN



wingman  
white/red/blue

RACEWEAR



racewear  
black/white

VANDAL



vandal  
black/neon/red

# JUMP

SIZES: Adult S-XXL

AVAILABLE GRAPHICS: Blocker, Jag, Skizm, Crank

## FEATURES

- Silicone printing on palms and finger tips for improved grip and braking control
- Long lasting and flexible material for the perfect fit
- Lightweight design with bold, non-fade graphics
- Seamless rolover fingertips
- Synthetic leather palm, with double layer thumb reinforcement
- Adjustable Hook and Loop wrist closure for secure and adjustable fit
- Pre-curved tailoring for the best fit possible, and helps to eliminate arm pump

## JUMP GLOVES

Graphic: Color	Part No.	S	M	L	XL	2X
Crank: Black/Multi	0385-1**	28	29	30	31	32
Blocker: Black	0385-2**	48	49	50	51	52
Blocker: White	0385-2**	58	59	60	61	62
Blocker: Black/Hi-Viz	0385-2**	68	69	70	71	72
Jag: Black/Red	0385-2**	78	79	80	81	82
Skizm: Blue/Red	0385-9**	38	39	40	41	42
Skizm: Hi-Viz/Teal	0385-9**	58	59	60	61	62



blocker  
white



blocker  
black/hi-viz

blocker  
black



jag  
black/red



crank  
black/multi



skizm  
hi-viz/teal



skizm  
blue/red

# BUTCH CARBON

SIZES: Adult S-XXL  
 AVAILABLE COLORS: Black

## FEATURES

- Polycarbonate, ballistic coverage, on individual knuckles delivers added confidence while maintaining dexterity
- Additional TPR and direct injection patches on top side of fingers and wrist
- Double layer Clarino® palm padding helps reduce blisters and prevent glove stiffening after drying
- Seamless, silicone rolover fingertips, for enhanced lever control
- Long-lasting, durable, and flexible materials for superior comfort
- Adjustable Hook and Loop wrist closure for secure and adjustable fit
- Pre-curved tailoring for the best fit possible, and helps to eliminate arm pump



## BUTCH CARBON

Color	USA No.	S	M	L	XL	2X
Black	0468-1**	08	09	10	11	12

# AMX

SIZES: Adult S-XXL  
 AVAILABLE COLORS: Black, Blue, Red, Hi-Viz

## FEATURES

- Designed by Greg Minnaar, 3 times World MTB DH Champion
- Also great for the MX rider who wants a thin supple glove with lots of feel when riding
- Super supple Nanofront® palm material for great feel, comfort and control while riding
- Designed for use with smart phone and tablet screens
- Super lightweight with great freedom-of-movement, the perfect choice for maximum feel and bike control
- Pre-curved tailoring for the best fit possible, and helps to eliminate arm pump
- Simple slip-on design



## AMX GLOVES

Graphic: Color	Part No.	S	M	L	XL	2X
Blocker: Black	1101-0**	48	49	50	51	52
Blocker: Blue	1101-0**	18	19	20	21	22
Blocker: Red	1101-0**	28	29	30	31	32
Blocker: Hi-Viz	1101-0**	38	39	40	41	42

- 
- » DIRT RL
  - » PARK FR
  - » UNDERDOG
  - » HOLESHOT
  - » PADDED SHORTS

## PROTECT YOURSELF

For more than 45 years it has been about protection. Protection from debris, roost, rocks, and branches. When it comes to safety and function O'Neal's full-line of protection provides sizes, features, and function for every type of rider on all types of terrain.

PROTECTION

## DIRT RL

SIZES: Adult S-XL

AVAILABLE COLORS: Gray, blue

### FEATURES - ELBOW GUARD

- Comfortable and soft elbow guard, with hard shell protection
- Lightweight and ultra-thin construction
- Sweat-absorbing and breathable neoprene helps reduce irritation while riding
- Abrasion-resistant material in critical areas
- Adjustable elastic strap for secure and snug fit
- Slim enough to be worn under your jersey
- Moisture absorbing and breathable material
- Exceeds EN1621 European safety standard

### FEATURES - KNEE GUARD

- Comfortable soft knee guard with integrated hard shell protection
- Lightweight and ultra-thin construction
- Made from sweat-absorbing and breathable neoprene
- Abrasion-resistant material in critical areas
- Adjustable, elastic strap provides a secure and snug fit
- Moisture absorbing and breathable material

### DIRT RL KNEE & ELBOW GUARD

Type: Color	Part No.	S	M	L	XL
Knee: Gray	0277-2**	02	03	04	05
Knee: Blue	0277-3**	02	03	04	05
Elbow: Gray	0278-2**	—	03	04	05
Elbow: Blue	0279-4**	—	03	04	05



elbow  
blue



elbow  
gray



knee  
blue



knee  
gray

## PARK FR

SIZES: Adult S-XXL

AVAILABLE COLORS: Black

### FEATURES

- Lightweight, breathable, and comfortable
- Full-length knee and shin coverage for maximum protection
- Extended neoprene thigh sleeve for secure fit whilst riding
- Plastic mesh shells for improved airflow and ventilation
- Perforated foam on sides, top, and bottom of guards deliver added protection and improved ventilation while reducing weight
- 3 elastic straps provide a secure and snug fit while riding
- Ergonomic shaping, around the calf muscles and knees, for the perfect blend of fit and comfort



### PARK FR KNEE/SHIN GUARD

Color	Part No.	XS	S	M	L	XL	2XL
Black	0265-5**	02	03	04	05	06	07



## UNDERDOG III

NECK  
BRACE  
*Compatible*

SIZES: Adult S-XXL  
AVAILABLE COLORS: Black

### FEATURES

- Constructed from high-impact resistant, injection molded plastic, and IPX® material designed to protect your: shoulders, elbows, forearms, chest, and back
- IPX® back protector extends from the base of the neck to lower back; helping ensure complete protection where you need it most
- 9 areas of adjustment for the perfect fit
- Back protector zips off for easy cleaning
- Extensive mesh venting helps keep you cool while riding
- Adjustable elastic kidney belt with Hook and Loop closure for a secure fit
- Neck brace compatible



### UNDERDOG III GUARD

Version: Color	Part No.	S	M	L	XL	2XL
Underdog III: Black	0571-4**	02	03	04	05	06

# UNDERDOG II

SIZES: Youth S-L  
 AVAILABLE COLORS: Black

## FEATURES

- Constructed with high impact injection molded plastic to deflect dirt and debris
- Articulated back protector for increased mobility
- Removeable back, elbow and forearms
- Adjustable elastic kidney belt with hook and loop closure
- Extensive mesh and padded foam venting to help keep cool
- 9 areas of adjustment for the perfect fit

## UNDERDOG II YOUTH BODY ARMOR

Version: Color	Part No.	S	M	L
Underdog II: Black	0571-3**	02	03	04



109 | PROTECTION

# HOLESHOT

NECK  
BRACE  
Compatible

SIZES: Adult S-XXL  
 AVAILABLE COLORS: Black

## FEATURES

- Neck brace compatible
- Articulated back protector for increased mobility
- Airprene® shoulder padding for comfort
- Integrated waist closure system
- Vented foam padding to keep you cool



## HOLESHOT CHEST PROTECTOR

Version: Color	Part No.	S	M	L	XL	2XL
Holeshot: Black	0571-4**	02	03	04	05	06

## TRAIL PRO SHORT

SIZES: Adult S-XXL

AVAILABLE COLORS: Black/Lime

### FEATURES

- High-density, EVA foam for added protection in the key impact zones of hips, thighs, and coccyx (tail bone)
- Pads are ergonomically designed to be as comfortable and unobtrusive as possible when worn under riding shorts and pants
- Flat double seams, elasticated waist and legs, and Spandex mesh legs provide a great fit for comfortable riding
- Coolmax® chamois inset for added comfort



### TRAIL PRO SHORT

Color	Part No.	S	M	L	XL	2XL
Black/Lime	1288-0**	02	03	04	05	06

## CHAMOIS SHORT

SIZES: Adult 28-30in, 32in, 34-36in, 38-40in

AVAILABLE COLORS: Black

### FEATURES

- Click-fit system ensures great fit with outer shorts
- Chamois insert pad
- Lightweight, breathable, fast-wicking and quick-drying fabric



### CHAMOIS SHORT

Color	Part No.	28-30in	32in	34-36in	38-40in
Black	1069-9**	30	32	34	36







O'NEAL  
CLOTHING

- » MAYHEM LITE
- » ELEMENT
- » ELEMENT FR
- » PIN IT III
- » ALL-MOUNTAIN
- » ULTRA-LITE
- » THREAT

### RIDING GEAR

It's the layer of protection that wraps you like a 2nd skin, yet it needs to be comfortable enough, breathable enough, and cut just right so you hardly feel it at all. Making the finest in protective apparel is what we have done for decades. Ride in O'NEAL and you get the best of both worlds; perfect comfort, flexibility, and feel while still providing the ultimate in protection when you need it most.

# MAYHEM LITE

SIZES: Adult: Jersey S-XXL, Pant 28-42  
 AVAILABLE GRAPHICS: Crank, Blocker

## FEATURES – JERSEY

- Streamlined and lightweight design for the serious racer
- Jersey weight 8.5oz (size L)
- Multiple panel construction for an ergonomically correct cut and fit
- Sublimated graphics that won't fade
- Extended tail
- Clear silicone printing on lower back to help keep jersey tucked in

## FEATURES – PANT

- Streamlined and lightweight design for the serious racer
- No rubber thigh patches for reduced weight and increased mobility
- Durable denier fabrics with triple stitching in critical areas
- Leather heat shield
- Reinforced and adjustable elastic waist system with hook-and-loop closure for a precise fit
- Double snaps at waist closure, reinforced with hook and loop to stay secure and keep the zipper in its place
- More durable, wear resistant panels on: seat, inside of legs, and knees
- Lighter weight, more breathable panels, positioned away from bike contact points
- Stretch panels in key points on: front, back, and knees for great freedom of movement
- Vented mesh liner
- Ergonomically correct, pre-bent and padded knee area
- Tapered lower leg to prevent bunching in boot

CRANK



### MAYHEM JERSEYS

Graphic: Color	Part No.	S	M	L	XL	2X
Crank: Black/Multi	0023-1**	02	03	04	05	06
Blocker: Black/White/Orange	0030-1**	02	03	04	05	06
Blocker: Black/Hi-Viz	0030-2**	02	03	04	05	06
Blocker: Red/Teal	0030-3**	02	03	04	05	06

### MAYHEM PANTS

Graphic: Color	Part No.	28	30	32	34	36	38	40	42
Crank: Black/Multi	0123-1**	28	30	32	34	36	38	40	42
Blocker: Black/White/Orange	0130-1**	28	30	32	34	36	38	40	42
Blocker: Black/Hi-Viz	0130-2**	28	30	32	34	36	38	40	42
Blocker: Red/Teal	0130-3**	28	30	32	34	36	38	40	42



BLOCKER



ELEMENT

# ELEMENT



**SIZES:** Adult: Jersey S-XXL, Pant 28-42  
 (jersey sizes 3X and 4X and pant sizes 44-52 available in black/white racewear only)  
**AVAILABLE GRAPHICS:** Racewear, Afterburner, Enigma, Vandal

## FEATURES - JERSEY

- Breathable, moisture-wicking material
- Jersey weight 9.3oz (size L)
- Sublimated graphics
- Sewn-in elbow padding
- Extended tail that keeps jersey tucked in
- V-neck collar

## FEATURES - PANT

- Heavy duty but lightweight denier fabrics provide the perfect combination of comfort and protection while riding
- More durable, wear resistant panels on: seat, inside of legs, and knees
- Lighter weight, more breathable panels, positioned away from bike contact points
- Stretch panels in key points on the front, back, and knees of pants for great freedom-of-movement
- Elastic waist with adjustable ratchet closure system for a secure and snug fit
- Protective rubber patches for extra protection when crashing
- Tapered legs with elastic cuffs for a snug fit
- Fully lined for added comfort
- Removable, internal, EVA foam hip protectors



RACEWEAR

WOMEN'S



### ELEMENT JERSEYS

Graphic: Color	Part No.	S	M	L	XL	2X	3X	4X
Racewear: Black/White	0028-1**	02	03	04	05	06	07	08
Racewear: Gray/Hi-Viz	0028-2**	02	03	04	05	06	—	—
Racewear: Black/Orange	0028-4**	02	03	04	05	06	—	—
Enigma: Black/White	0028-5**	02	03	04	05	06	—	—
Enigma: Black/Hi-Viz	0028-5**	12	13	14	15	16	—	—
Vandal: Black/Neon	0028-6**	12	13	14	15	16	—	—
Afterburner: Blue/Red	0028-8**	12	13	14	15	16	—	—

### ELEMENT PANTS

Graphic: Color	Part No.	28	30	32	34	36	38	40	42	44	46	48	50	52
Racewear: Black/White	0128-1**	28	30	32	34	36	38	40	42	44	46	48	50	52
Racewear: Gray/Hi-Viz	0128-2**	28	30	32	34	36	38	40	42	—	—	—	—	—
Racewear: Black/Orange	0128-4**	28	30	32	34	36	38	40	42	—	—	—	—	—
Enigma: Black/White	0128-5**	28	30	32	34	36	38	40	42	—	—	—	—	—
Enigma: Black/Hi-Viz	0128-5**	58	60	62	64	66	68	70	72	—	—	—	—	—
Vandal: Black/Neon	0128-6**	58	60	62	64	66	68	70	72	—	—	—	—	—
Afterburner: Blue/Red	0128-8**	58	60	62	64	66	68	60	62	—	—	—	—	—



### WOMENS JERSEYS

Graphic: Color	Part No.	S	M	L	XL	2X
Element: Black/Pink/Hi-Viz	0028-7**	02	03	04	05	06

### WOMENS PANTS

Graphic: Color	Part No.	1/2	3/4	5/6	7/8	9/10	11/12	13/14
Element: Black/Pink/Hi-Viz	0128-7**	27	28	30	32	34	36	38

### ELEMENT YOUTH JERSEYS

Graphic: Color	Part No.	XS	S	M	L	XL
Racewear: Black/White	0029-1**	01	02	03	04	05
Racewear: Gray/Hi-Viz	0029-2**	—	02	03	04	05
Racewear: Black/Orange	0029-4**	—	02	03	04	05
Enigma: Black/White	0029-5**	—	02	03	04	05
Enigma: Black/Hi-Viz	0029-5**	—	12	13	14	15
Vandal: Black/Neon	0029-6**	—	12	13	14	15
Afterburner: Blue/Red	0029-8**	—	12	13	14	15

### ELEMENT YOUTH PANTS

Graphic: Color	Part No.	2/3	4/5	5/6	8/10	12/14	28
Racewear: Black/White	0128-1**	18	20	22	24	26	27
Racewear: Gray/Hi-Viz	0128-2**	—	—	22	24	26	27
Racewear: Black/Orange	0128-4**	—	—	22	24	26	27
Enigma: Black/White	0128-5**	—	—	22	24	26	27
Enigma: Black/Hi-Viz	0128-5**	—	—	52	54	56	57
Vandal: Black/Neon	0128-6**	—	—	52	54	56	57
Afterburner: Blue/Red	0128-8**	—	—	52	54	56	57



AFTERBURNER



ENIGMA



VANDAL



# ELEMENT FR

SIZES: Adult S-XXL, Adult 28-38

AVAILABLE COLORS: Blue/Black, Black/White, Red/Gray, Black/Hi-Viz

## FEATURES - JERSEY

- Improved comfort while riding with new: more-breathable, faster-wicking, quicker-drying fabric
- Secure back pocket with zipper
- Shorter front and drop tail for a great fit when on the bike
- Mesh panel underarms for increased ventilation
- Flat-locked seams for added comfort
- V-neck collar
- Matching colors with Pin It Shorts

## FEATURES - SHORT

- Incredible comfort and freedom-of-movement with a seamless crotch and 4-way stretch, outer material that is lightweight, breathable, quick-drying, and fast-wicking
- 2 front zipper pockets for handy storage
- 2 front zip leg vents and mesh panels
- Mesh lining for added comfort
- Improved durability with tough material panels on the crotch and inside of legs
- Ratchet closure, and slip resistant inner waistband, with rubber strips for secure fit
- 2 front zip leg vents and mesh panels
- Handy hang tab on back of waist for drying and storage
- Useful integrated goggle and sunglasses wipe cloth
- Compatible with O'Neal inner chamois shorts (available separately)



## ELEMENT FR JERSEY

Type: Color	Part No.	S	M	L	XL	2XL
Blocker: Blue/Black	1048-0**	02	03	04	05	06
Blocker: Black/White	1048-1**	02	03	04	05	06
Blocker: Red/Gray	1048-3**	02	03	04	05	06
Blocker: Black/Hi-Viz	1048-4**	02	03	04	05	06

## ELEMENT FR SHORTS

Type: Color	Part No.	28	30	32	34	36	38
Blocker: Blue/Black	1078-0**	28	30	32	34	36	38
Blocker: Black/White	1078-1**	28	30	32	34	36	38
Blocker: Red/Gray	1078-3**	28	30	32	34	36	38
Blocker: Black/Hi-Viz	1078-4**	28	30	32	34	36	38





## PIN IT III

**SIZES:** Adult Jersey S-XXL, Adult Shorts 28-38  
**AVAILABLE COLORS:** Red/Gray, Black/Hi-Vis, Black

### FEATURES - JERSEY

- Improved comfort while riding with new: more-breathable, faster-wicking, quicker-drying fabric
- Secure back pocket with zipper
- Shorter front and drop tail for a great fit when on the bike
- Mesh panel anderarms for increased ventilation
- Flat-locked seams for added comfort
- V-neck collar
- Matching colors with Pin It and Rockstacker Shorts

### FEATURES - SHORT

- Incredible comfort and freedom-of-movement with a seamless crotch and 4-way stretch, outer material that is lightweight, breathable, quick-drying, and fast-wicking
- 2 front zipper pockets for handy storage
- 2 front zip leg vents and mesh panels
- Mesh lining for added comfort
- Improved durability with tough material panels on the crotch and inside of legs
- Ratchet closure, and slip resistant inner waistband, with rubber strips for secure fit
- Handy hang tab on back of waist for drying and storage
- Rear zipper pocket for storage
- Useful integrated goggle and sunglasses wipe cloth
- Compatible with O'Neal inner chamois shorts (available separately)



### PIN IT III JERSEY

Color	Part No.	S	M	L	XL	2XL
Red	0087-6**	02	03	04	05	06
Gray	0087-8**	02	03	04	05	06

### PIN IT III SHORTS

Color	Part No.	28	30	32	34	36	38
Black	1075-10**	28	30	32	34	36	38

## ALL MOUNTAIN

**SIZES:** HH  
**AVAILABLE COLORS:** Black

### FEATURES

- High back waistband for comfortable fit while riding
- 2 front and back pockets (back pocket with zipper)
- Mesh inserts provide maximum ventilation
- Front auto-stop zipper
- Fast-wicking and quick drying performance material
- Extra-long legs
- Gentleman's Ball Scratcher pocket lining
- Compatible with O'Neal inner chamois shorts (available separately)



### ALL MOUNTAIN CARGO SHORTS

Type: Color	Part No.	28	30	32	34	36	38
Cargo: Black	0175-1**	28	30	32	34	36	38

## ULTRA-LITE '75

SIZES: Adult S-XXL

AVAILABLE COLORS: Black/White

### FEATURES

- Inspired by the O'Neal's MX heritage
- Vented mesh polyester
- Sublimated no-fade graphic
- Padded elbow protection
- Extended tail, with silicon print, to keep your jersey tucked in
- V-Neck collar
- Tag-less neck label



### ULTRA-LITE '75 JERSEY

Color	Part No.	S	M	L	XL	XXL
Black/White	0019-5**	02	03	04	05	06

## THREAT JERSEY

SIZES: Adult S-XXL

AVAILABLE COLORS: Black

### FEATURES

- Sublimated no-fade graphic
- Versatile graphics match multiple pant designs
- Breathable, moisture-wicking fabric
- Padded elbow protection
- Silicone print on rear of jersey to keep it tucked in



men's  
black/white



women's  
black/pink

### THREAT JERSEY

Type: Color	Part No.	S	M	L	XL	XXL	3XL	4XL
Men's: Black/White	0090-3**	02	03	04	05	06	07	08
Women's: Black/Pink	0090-4**	02	03	04	05	—	—	—



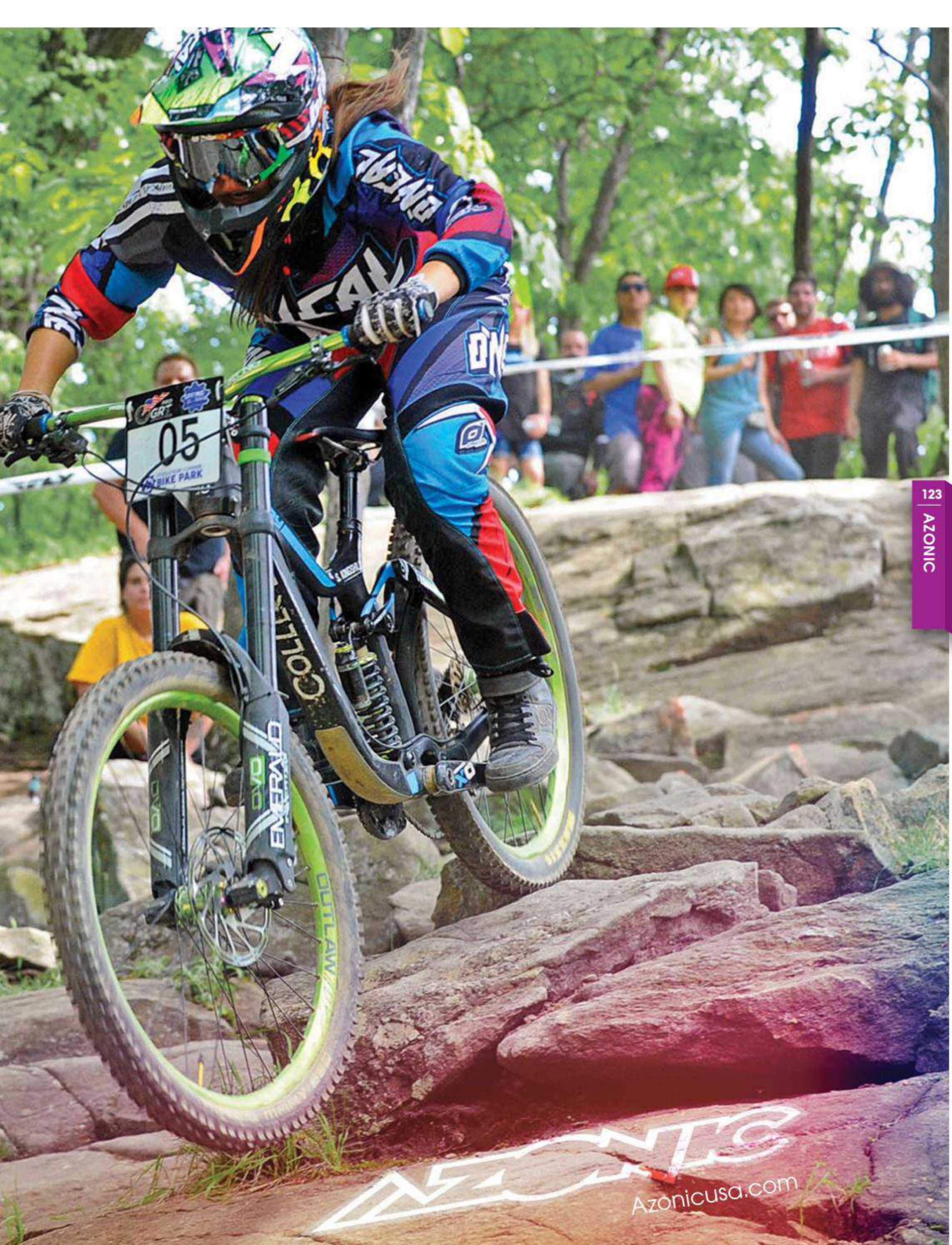
- » WHEELS
- » PEDALS
- » BARS
- » STEMS
- » SMALL PARTS

### BUILT FOR PUNISHMENT

Created based on the need to go further, fly faster and push harder than ever before, the Azonic line of parts and accessories goes Beyond all Limits. Born and Bred from a team of World Champions Azonic goods sacrifice nothing and are forged using only the finest in materials and workmanship allowing for optimum performance. If durable premium product is what you are looking for, AZONIC delivers!

AZONIC





EMERALD  
Azonicusa.com

# OUTLAW BOOSTED

SIZES: Front; 15mm/110mm

Rear; 12mm/148mm

AVAILABLE COLORS: Black

## FEATURES

- Made to fit your boosted fork and or frame
- The Boosted Outlaw allows greter strength and rigidity
- Boost: 148
- Front wheel converts from Q/R, 15mm & 20mm through axles
- Moves the rear hub flanges 3mm outboard on each side in order to improve the spoke bracing angle and increase wheel stiffness
- 8/9/10/11 speed compatible
- Tubeless compatible
- XD driver compatible

## OUTLAW 650B & 29ER WHEELSET

Type	Part No.
650B	3200-891
29er	3200-892



# OUTLAW 29ER

SIZES: 135mm

AVAILABLE COLORS: Black

## FEATURES

- Weight: 2370g (set)
- Double-wall pinned rim
- 32 spoke construction for added strength and pedaling efficiency
- 6061-T6 Aluminum rim construction
- Front wheel converts from Q/R, 15mm & 20mm through axles
- Comes with conversion kit
- 142mm rear wheel spacing
- Disc only
- 8/9/10/11 speed compatible
- Tubeless compatible
- XD driver compatible
- 142mm conversion kit available on page 126

## OUTLAW 29ER WHEELSET

Color	Part No.	135mm
Black	3200-9**	05

## OUTLAW 29ER RIM

Color	Part No.	32H
Black	3200-9**	12



# OUTLAW 650B

SIZES: 142mm, 150mm

AVAILABLE COLORS: Black, Blue, Red, Green

## FEATURES

- Weight: 135mm 2254g (set), 150mm 2276g (set)
- Double-wall pinned rim
- 32 spoke construction for added strength and pedaling efficiency
- 6061-T6 Aluminum rim construction
- Front wheel converts from Q/R, 15mm & 20mm through axles
- Disc only
- 8/9/10/11 speed compatible
- Tubeless compatible
- XD driver compatible
- 157mm conversion kit available on page 126

## OUTLAW 650B WHEELSET

Color	Part No.	142mm	150mm
Black	3200-8**	65	66
Blue	3200-8**	67	68
Red	3200-8**	69	70
Green	3200-8**	71	72

## OUTLAW 650B RIM

Color	Part No.	32H
Black	3200-8**	85



125  
AZONIC

# OUTLAW 26"

SIZES: 135mm, 150mm

AVAILABLE COLORS: Black

## FEATURES

- Weight: 135mm 2340g (set), 150mm 2362g (set)
- Double-wall pinned rim
- 32 spoke construction for added strength and pedaling efficiency
- 6061-T6 Aluminum rim construction
- Front wheel converts from Q/R, 15mm & 20mm through axles
- Comes with conversion kit
- 135mm & 150mm rear wheel spacing
- Disc only
- 8/9/10/11 speed compatible
- Tubeless compatible
- XD driver compatible
- 142mm conversion kit available on page 126

## OUTLAW 26" WHEELSET

Color	Part No.	135mm	150mm
Black	3200-8**	00	01

## OUTLAW 26" RIM

Color	Part No.	32H
Black	3200-8**	10



# RECOIL

**SIZES:** Front; 32 Hole, Rear; 135mm or 150mm, Boosted; 15mm/110mm (black only) 12mm/148mm (black only)

**AVAILABLE COLORS:** Black, Red, Blue, Green

## FEATURES - FRONT HUB

- 32 hole front hub converts from QR to 15mm and 20mm (THRU. Axle)
- Comes with QR/20mm conversion kit
- Weight: 236g
- Standard 6 bolt rotor fitting

## FEATURES - REAR HUB

- 32 hole, 7075 Aluminum hub body
- Converts from QR to 12mm x 135mm bolt on axle
- Weight: 135mm; 430g, 150mm; 445g
- Standard 6 bolt rotor fitting

## FEATURES - BOOSTED

- Hub flanges move outboard by 5mm (front), 3mm (rear)
- Standard 6 bolt rotor fitting



## RECOIL ALLOY FRONT HUB

Color	Part No.	32 Hole
Black	3200-8**	14
Red	3200-8**	15
Blue	3200-8**	20
Green	3200-8**	21
Boosted Black	3200-8**	35

## RECOIL ALLOY REAR HUB

Color	Part No.	135mm	148mm	150mm
Black	3200-8**	16	—	18
Red	3200-8**	17	—	19
Boosted Black	3200-8**	—	36	—

# RECOIL AXLE

**SIZES:** 12mm x 135mm

## FEATURES

- An astonishing 102g
- Ultra lightweight T-7000 series Aluminum for maximum strength and durability



## RECOIL AXLE

Type	Part No.
Aluminum	3200-004

# MOMENTUM AXLE

**SIZES:** 12mm x 135mm

## FEATURES

- Perfect for any 12mm x 135mm bolt on application or to just add strength to your current set-up
- Ultra strong 4130 Chromoly construction
- 3/8 axle step down dropout
- Weight: Steel; 136g, Aluminum; ±65g



## MOMENTUM AXLE

Type	Part No.
Steel	3200-003
Aluminum	3200-030

## AXLE ADAPTOR

Size	Part No.
15mm	3200-008
20mm	3200-009

# AXLE ADAPTOR

**SIZES:** 15mm or 20mm

## FEATURES

- 15mm thru. axle spacers
- 20mm thru. axle spacers



# OUTLAW CONVERSION KIT

**SIZES:** 135mm, 142mm, 157mm

## FEATURES

- Converts wheel spacing



## OUTLAW CONVERSION KIT

Type	Part No.
135mm	3200-637
142mm	3200-639
157mm	3200-640





### BIGFOOT PEDALS

Color	Part No.
Black	3062-101
Hi-Viz	3062-103
Aluminum	3062-104

## BIGFOOT

**SIZES:** One Size  
**AVAILABLE COLORS:** Black, Hi-Viz, Aluminum

### FEATURES

- Premium flat pedal for MTB weighing in at only 370g/pair
- Great stability and contact with the bike (120 x 110mm)
- Great pedal clearance with a 12mm profile
- Outboard axle locking nuts for tension adjustment and removing play
- Forged and CNC machining 6061 Aluminum body which is lightweight, thin and strong.
- Forged 4130 Aluminum Chromo axle
- 32 grippy and durable pins
- Contains 4 spare pins



## 420

SIZES: One Size

AVAILABLE COLORS: Black, Red, Blue, Green

### FEATURES

- Extruded body
- CNC machined
- DU/sealed bearings
- Removable W33 & V9 Pins
- Weight: 420 grams/pair (440g with pins/pair)

### 420 PEDALS

Color	Part No.
Ano Black	3056-111
Ano Red	3056-112
Ano Blue	3056-116
Ano Green	3056-117

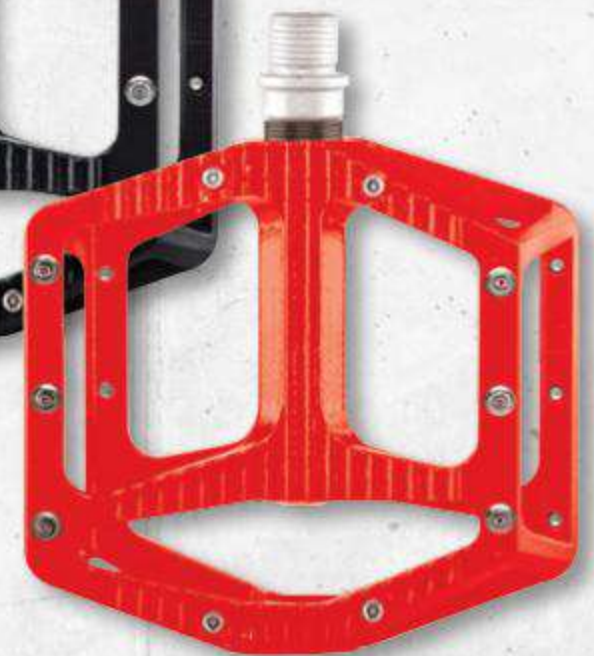
## WORLD FORCE

SIZES: One Size

AVAILABLE COLORS: Black, Red

### FEATURES

- The ultimate flat pedal developed over 2 years of top riders
- True concave platform achieved through platform shape and pin height
- CNC machined 6061 T6 Aluminum body
- Strong 4130 chromo axle
- Parallel ridges on inboard, outboard and middle of body for additional grip
- Perfect balance of weight, durability and strength
- Weight: 380g
- Outboard + center bearing; Inboard bushing, for long-life and smooth running
- Spare pins and tool included



### WORLD FORCE PEDALS

Color	Part No.
Matte Black	3120-100
Matte Red	3120-101



### SHOO-IN PEDALS

Color	Part No.
Black	3056-760
White	3056-761
Red	3056-762
Orange	3056-763

## SHOO-IN

**SIZES:** One Size  
**AVAILABLE COLORS:** Black, White, Red, Orange

### FEATURES

- Chromo spindle
- Loose ball bearings
- Grippy, molded pins
- Weight: only 322g/pair



## SWITCHBACK

**SIZES:** One Size  
**AVAILABLE COLORS:** Black, Red

### FEATURES

- 572 grams a pair with pins.
- Aluminum body
- SPD compatible
- 2 sided SPD design
- Adjustable tension design
- 2 DU bushings 1 Sealed bearing
- 110mm-w / 100mm-l / 17mm thin
- CNC Chromo axle
- 24 removable pins



### SWITCHBACK PEDALS

Color	Part No.
Black	3120-200

# FLOW

**SIZES:** 31.8mm, 780mm ohr 800mm, 1", 2", or 3" Rise  
**AVAILABLE COLORS:** Black Ano, Blue Ano, Red Ano, Gray Ano, Orange Ano

## FEATURES

- Double-buttet 6061 T6 Aluminum
- Clamp size: 31.8mm
- Anodized colors
- Marked for a custom cut length
- Weight:  $\pm 350g$
- Width: 780mm and 800mm with 1", 2", or 3" rise
- Upsweep: 5°
- Backsweep: 8°



## FLOW BARS

Color	Part No.	780mm, 3"	800MM, 2"	800MM, 1"
Black Ano	3001-2**	31	10	21
Blue Ano	3001-2**	—	13	—
Gray Ano	3001-2**	—	—	24
Red Ano	3001-2**	—	15	25
Green Ano	3001-2**	—	16	26
Orange Ano	3001-2**	—	17	27



black



blue



gray



red



green



orange



# HANDLEBARS

Matt MacDuff

# AGILE

SIZES: 31.8mm, 780mm, 1" Rise

AVAILABLE COLORS: Black Ano, Blue Ano, Gray Ano, Red Ano, Orange Ano

## FEATURES

- Double-buttet 7050 T6 Aluminum
- Clamp size: 31.8mm
- Anodized colors
- Marked for a custom cut length
- Weight:  $\pm 350g$
- Width: 780mm with 1" rise
- Upsweep: 5°
- Backsweep: 7°

## AGILE BARS

Type: Color	Part No.	780mm
Black Ano	3001-1**	00
Blue Ano	3001-1**	01
Gray Ano	3001-1**	02
Red Ano	3001-1**	03
Orange Ano	3001-1**	05



## C.F.K. CARBON

SIZES: 31.8mm, 800mm, 20mm Rise  
AVAILABLE COLORS: Carbon fiber

### FEATURES

- Super lightweight carbon handlebar
- Available in 800mm
- Weight:  $\pm 203\text{g}$  (800)
- Clamp size: 31.8mm
- 20mm rise, 5° upsweep, and 8°
- Classic matte carbon fiber woven finish

### CFK CARBON HANDLEBAR

Color	Part No.
Carbon fiber	3001-310



133

HANDLEBARS



## CLUB

SIZES: 31.8mm/45-50mm  
 AVAILABLE COLORS: Black

### FEATURES

- Direct mount stem
- CNC Machined 6061 T6 Aluminum
- 31.8mm bore diameters
- Laser etched logos
- 45-50mm extension
- 0° rise
- Weight: 150g



### CLUB STEMS

Color	Part No.
Black	3050-200



## PREDATOR

SIZES: One Size  
 AVAILABLE COLORS: Black, White, Red, Hi-Viz

### FEATURES

- Light and strong stem perfect for Enduro riding
- CNC Machined 6061 T6 Aluminum
- Laser etched logos
- 31.8mm bore diameters
- 50 & 60mm extension
- 40mm stack height
- 5° angle
- Weight: 113g

### PREDATOR PEDALS

Color	Part No.	50mm	60mm
Black	3075-1**	00	05
Red	3075-1**	01	06
Blue	3075-1**	02	07
Hi/Viz	3075-1**	09	10





## BARETTA II

SIZES: 31.8mm/40mm

AVAILABLE COLORS: Black, Blue, Red, Orange, Hi-Viz

### FEATURES

- CNC Machined 6061 T6 Aluminum
- Laser etched logos
- 31.8mm bore diameters
- 40mm extension
- 38mm stack height
- 15° rise
- Weight: 196g

### BARETTA II STEMS

Color	Part No.
Black	3050-220
Blue	3050-221
Red	3050-222
Orange	3050-223
Hi-Viz	3050-225

# STEMS

James Doerfling



SMALL  
PARTS



ONEAL



# GONZO CLAMP

SIZES: 28.6mm, 31.8mm, 34.9mm

AVAILABLE COLORS: Black, Red, Blue, Orange, Green, Raw

## FEATURES

- Made from forged and CNC machined 6061-T6 Aluminum
- Laser etched logos
- Available in 28.6mm, 31.8mm, and 34.9mm
- Weight: 35g



## GONZO SEAT POST CLAMPS

COLOR	Part No.	28.6	31.8	34.9
Black	3033-1**	40	41	42
Red	3033-1**	50	51	52
Blue	3033-1**	60	61	62
Orange	3033-1**	70	71	72
Green	3033-1**	80	81	82
Raw	3033-1**	90	91	92

# Q/R CLAMP

SIZES: 31.8mm, 34.9mm

AVAILABLE COLORS: Black, Red, Blue, Green

## FEATURES

- Seat clamp designed for both MTB and BMX use
- Strong and efficient clamp design
- 7075 Aluminum construction
- Available in 31.8mm and 34.9mm
- Weight: 34g (31.8mm), 36g (34.9mm)

# LOGO GRIP

SIZES: One size

AVAILABLE COLORS: Black, Red, Blue, Orange

## FEATURES

- Thin recessed grip profile for maximum feel
- Anodized aluminum lock-on collars
- Grip length: 130mm
- Allen Screws to tighten collars
- Comes as grip set with collars and plugs

## Q/R SEAT POST CLAMPS

COLOR	Part No.	31.8	34.9
Black	3033-1**	17	18
Red	3033-1**	26	27
Blue	3033-1**	32	33
Green	3033-1**	36	37

## LOGO GRIPS

COLOR	Part No.	
Black	3019-0**	00
Blue	3019-0**	01
Red	3019-0**	02
Orange	3019-0**	03





## SPLATTER FENDER

**SIZES:** One size

**AVAILABLE COLORS:** Black, Black/Neon Green, Black/Hi-Viz

### FEATURES

- Mount front or rear
- Universal fit for front or back: 8 holes
- Comes with 4 zip ties (and 4 spares)
- Polypropylene
- Weight: 33g

### SPLATTER FENDER

COLOR	Part No.
Black	3021-000
Black/Neon Green	3021-001
Black/Hi-Viz	3021-002



## PIN IT

**SIZES:** 27.2, 30.9, 31.6, 34.9

**AVAILABLE COLORS:** Black, Red, Blue, Orange

### FEATURES

- 6061-T6 forged Aluminum
- 2 bolt clamp
- High polished finish
- Laser etched logos
- 350mm length
- Available in 27.2, 30.9, 31.6, and 34.9mm
- Weight: 290g

### PIN IT SEAT POSTS

COLOR	Part No.	27.2	30.9	31.6	34.9
Black	3033-2**	00	10	20	30
Blue	3033-2**	01	11	21	—
Red	3033-2**	02	12	22	—
Orange	3033-2**	03	13	23	—





# ONEAL OF US



Sifuentes



Myers



Every day for nearly 50 years One of Us is out riding. Be it professionals, family, friends or staff each One of you allows us to make it happen. As a team, we cannot be stopped. The continued contribution, feedback and support is most sincerely appreciated. For those of you we were lucky enough to capture here as well as those that are camera shy, we thank you for taking the ride with us as this journey continues.



Herrlein

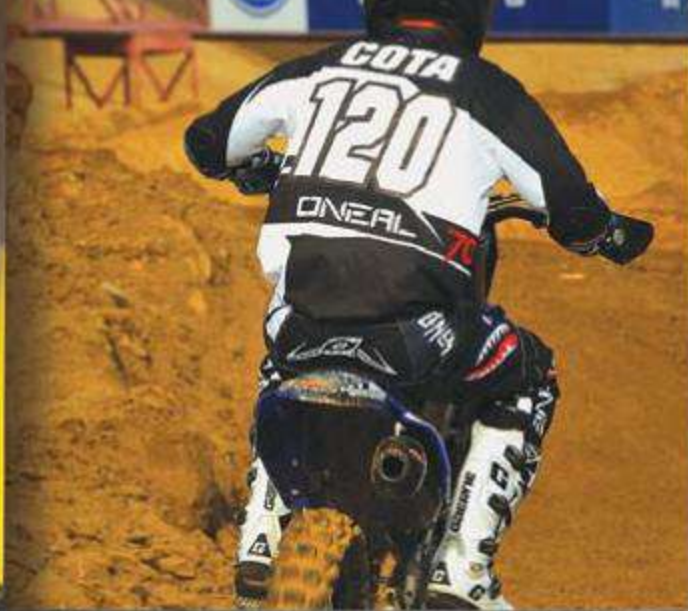




JJ Pauk



Camden Cota



Garrett AHLF



Sheddin



James O'Neal III (4 yo) places 2nd in his first MTB race

Preston and Braden O'Neal



Six time AMA National Champion Janniro

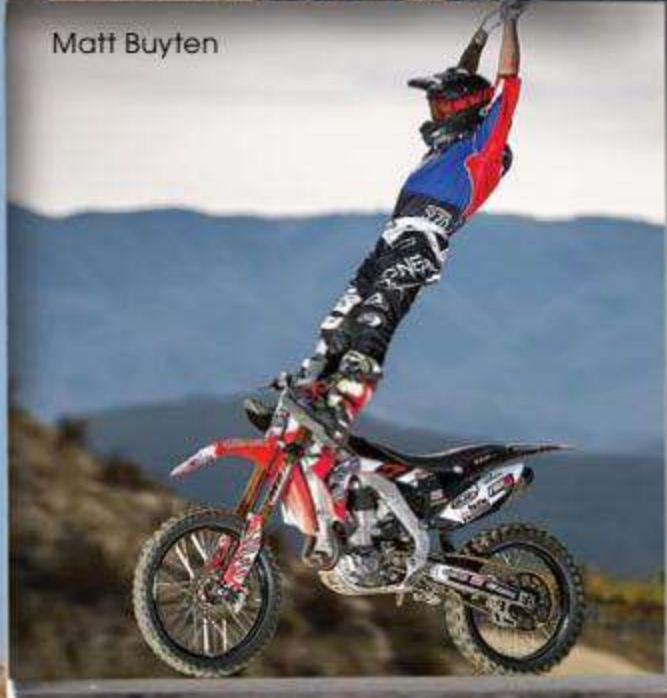


Colin Morrison

Raha



Matt Buyten



Willoh



Max Eddy Jr.



Weyman



Hudson





Ackermann



Nagy



Septien



Bracken Hall



Ojeda



Braden



Adam Ford



AJ Catanzaro



Levi



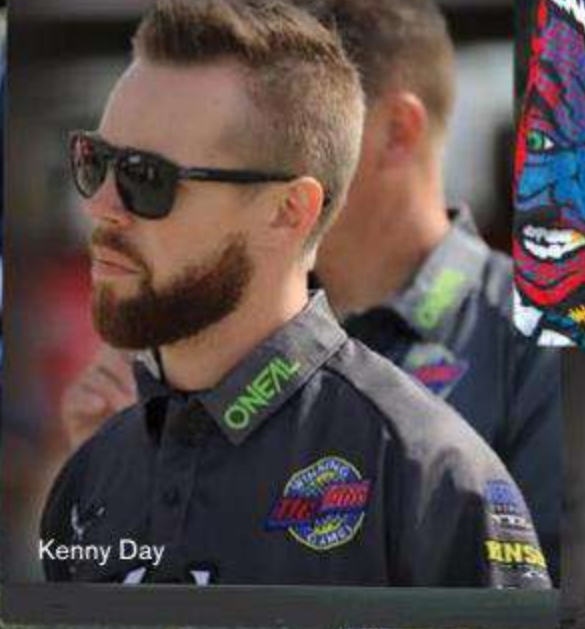
Wild Wally Palmer



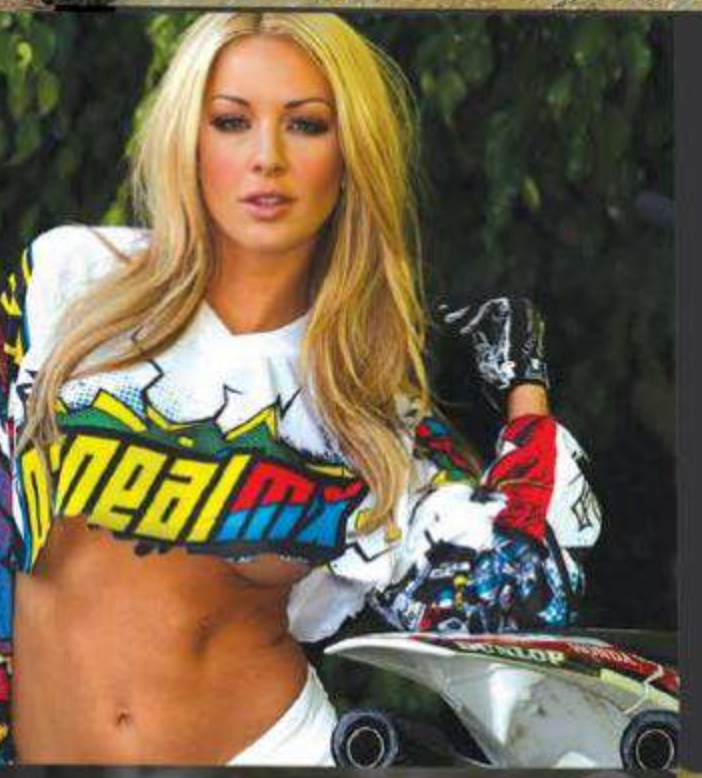
Hayden Mellross



Mcferran



Kenny Day



Kent Reed



Graves



Maeda



Tod Sciacqua





Carter Dubach



Zach Bell



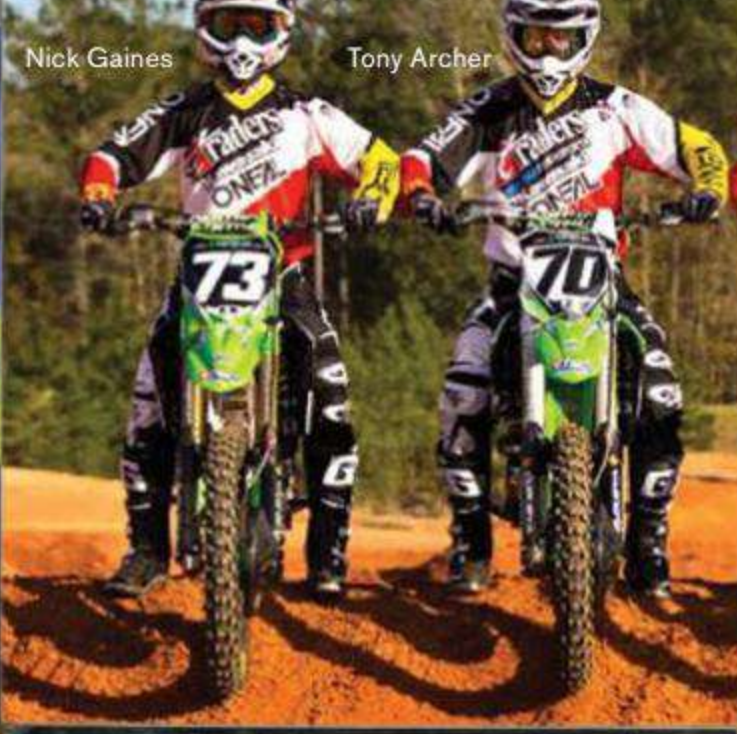
Sayaka



Buttrick



Deven Raper



Nick Gaines

Tony Archer



Justin Starling

Anthony Rodriguez



Steward Baylor Jr



Eddie Davis



Endicott



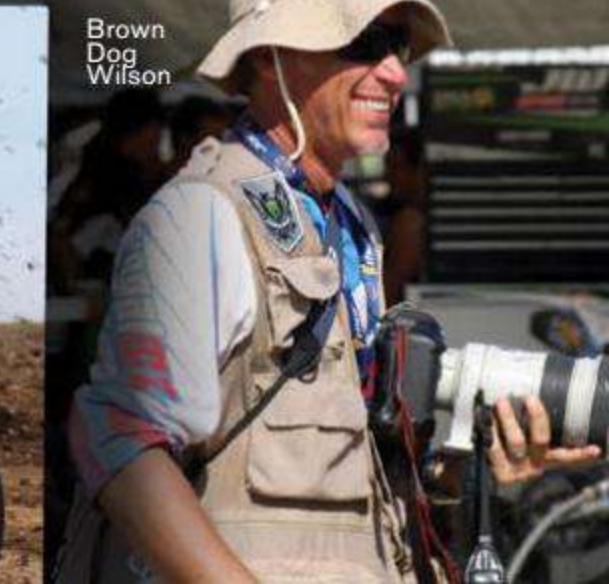
Dave Eropkin



Lalo



Paul Holmes



Brown Dog Wilson

Frank Costanzo

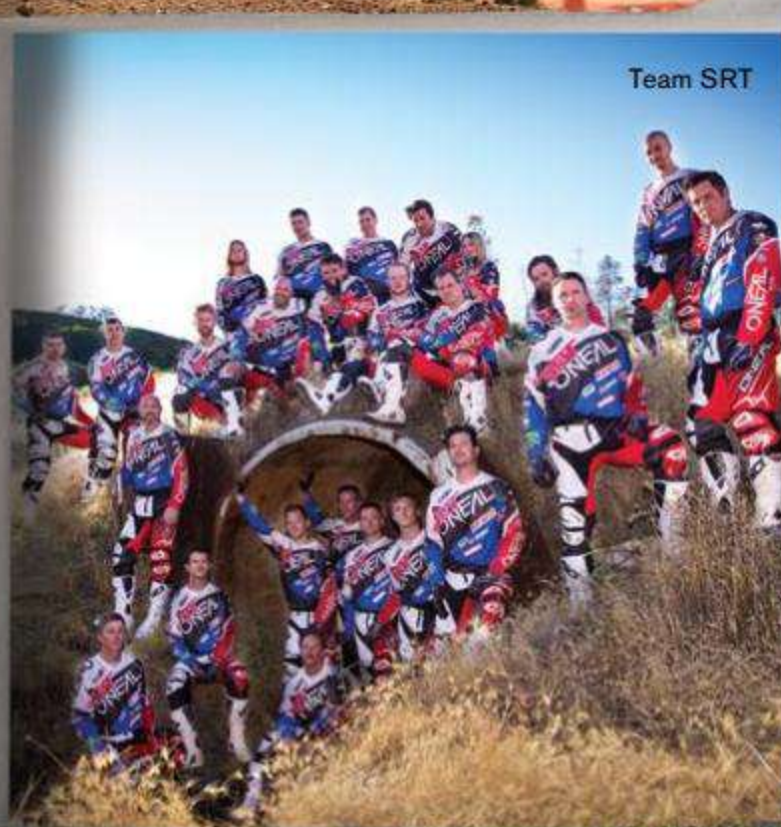
Joseph Sutter

Kevin Murphy



Team SRT

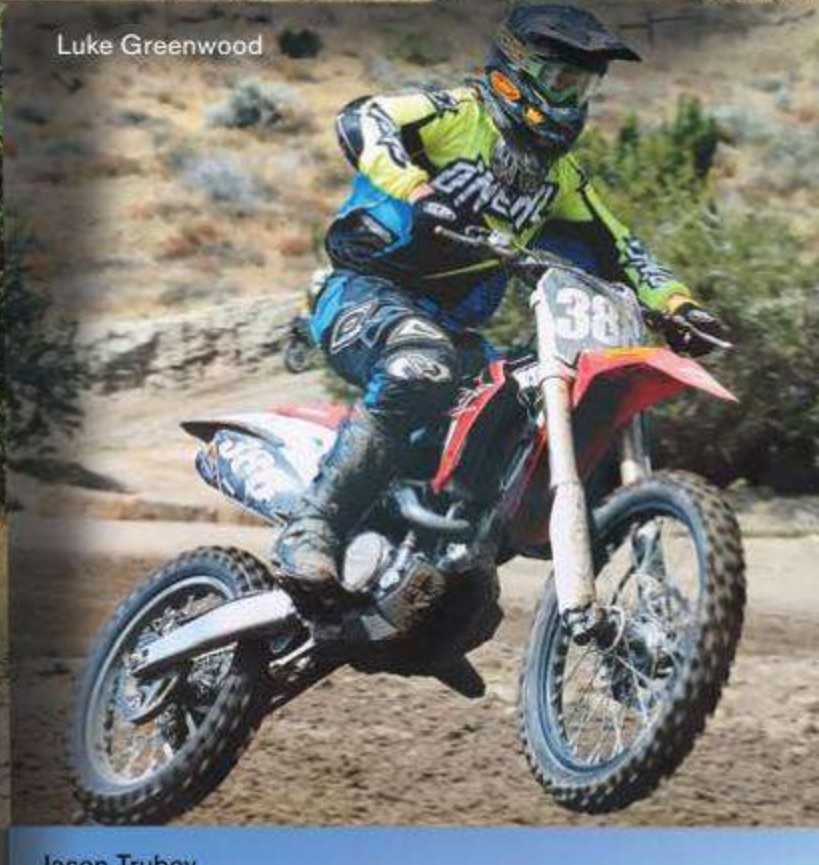
O'Neal Staff



Kilbarger

Cory Graffunder

Luke Greenwood



Chris Murphy

Jason Trubey





### THREE GENERATIONS OF RACING

Braden O'Neal takes a quick pic with his father and grandfather after winning his class in Mammoth. All three generations have raced to victory at the prestigious Mammoth track and this year Braden once again gets to take home the coveted Mammoth Bear Trophy!





Making 'em eat dirt... Since 1970

**ONEAL**

Check out the collection of full face motorcycle helmets we offer.