

ONEAL
SINCE 1970



2016
MOTO



This catalog contains part numbers and indicators which assist our customers as to product availability in each region. However, part numbers, available colors and specific safety standards may be different in each region/warehouse. Please confirm all part numbers and available colors with your O'NEAL representative prior to ordering. Thank you for choosing O'NEAL.

MOTO CONTENTS »

HELMETS

- 06 Introduction
- 08 Ten Series
- 12 Rockhard
- 13 Moto XXX
- 14 Seven Series
- 16 Five Series
- 18 Three Series
- 21 Two Series
- 22 Dual Sport

RIDING GEAR

- 24 Introduction
- 26 Gear Preview
- 28 Hardwear
- 32 Mayhem Lite
- 36 Element
- 42 Freeride

GLOVES

- 46 Introduction
- 48 Cold weather
- 50 Reactor/Revolution
- 52 Jump
- 54 Element/Matrix

BOOTS

- 56 Introduction
- 58 RDX
- 60 Element
- 61 Shorty/Rider

PROTECTION

- 62 Introduction
- 64 IPX® Technology
- 66 Chest/Body Guards
- 70 Leg/hip Guards
- 74 Neck Guards
- 76 Knee/Shin Guards
- 77 Kidney Belt

YOUTH GEAR

- 78 Introduction
- 79 Helmets
- 80 Riding Gear
- 82 Gloves
- 84 Boots/Protection

WOMEN'S GEAR

- 86 Introduction
- 88 Riding Gear
- 89 Boots/Helmet/Gloves/
MX Socks

ACCESSORIES

- 90 Introduction
- 92 MX Socks
- 93 Gear Bag/Umbrella/
Blanket/Stickers

BLUR GOGGLES

- 94 Introduction
- 96 B-Flex
- 97 B-Zero

MOTO XXX

- 98 Introduction
- 100 T-Shirts
- 102 Helmets
- 103 Hats/Wallet

FOUR

- 104 Introduction
- 105 Glove/T-Shirt

STREET GEAR

- 106 Introduction
- 107 Helmets/Gloves

ROCKHARD

- 108 Introduction/Helmet

O'NEAL

Racing Since 1970

OUR HERITAGE RUNS DEEP

In the foothills of Los Angeles, CA in the early 1960's things were a bit different. The decade of change was rapidly approaching and the landscape of Americana was quickly taking root in the valleys and mountains surrounding the city of Angels. It was here along the local mountains and trails a young man named Jim O'Neal would ride his modified Triumph motorcycle to high school and would find himself taking the same Triumph through the dirt and tracks into the hillsides above the city.

In 1966 these mountains and foothills outside of LA became the host to America's first Motocross race at Hopetown. It was then that Jim's passion for riding quickly turned to racing and in 1970 O'Neal, the company was born. Jim found himself driven to develop and distribute better parts, apparel and accessories to allow young racers on two wheels to go further and race faster than ever before.

Today, you can find the O'Neal US office just a few miles from that old Hopetown track. You can find our dedicated team members still pushing to develop product to take you further and faster on two wheels than ever before. And on the tracks and trails around town and racing down in Baja, you will still find Jim O'Neal pushing his passions to the limits every chance he gets. More than 45 years later you can find O'Neal products at nearly 7,000 retail locations worldwide. In each one of these locations you will find the passion to push further, in every single product.

Enjoy the Ride.



33 class championships
82 Super Baja races 250, 500 and 1000
31 class wins
Only double class winner
Only triple class winner same event, 2006 Baja
Over 100 classes entered but 35 races won

BONUS PHOTOS
exclusive with WALTZ

PROCESS AND APPARATUS PATENTED
ADD'L U.S. AND FOREIGN PATS. PEND.



Jim and Keith O'Neal at the Mammoth Mt. start gate. Look ahead and win it.

800-421-9001



FOX





with O'Neal at the Mammoth Mt.
sta. Look ahead and pin it!

100-111-1011



- » TEN SERIES
- » SEVEN SERIES
- » FIVE SERIES
- » THREE SERIES
- » TWO SERIES
- » DUAL SPORT

MX HELMETS

While none of us go riding thinking we are going to crash hard, we all know it happens. Having the right helmet is critical. The O'Neal 2016 helmets come in a variety of styles many of which exceed DOT, SNELL, ECE and AS/NZS safety standards.

All O'Neal helmets are designed using the latest technology allowing your head to stay cool with multiple vents and comfortable ultra plush liners. Each helmet is designed using the latest in CAD technology and are tested at independent labs for safety security. Proper head safety is critical. Trust the company that's been producing protective apparel for over 45 years, trust O'Neal.

HELMETS







HELMETS 10 SERIES

10 SERIES HELMETS



SIZES: Adult XS-XXL

AVAILABLE GRAPHICS: Flow, Glitch

FEATURES

- Lightweight fiberglass construction
- Shell weight ($\pm 50g$): 1150g (size M)
- Adjustable visor design
- Maximum airflow throughout the helmet, delivered by oversized vents and EPS channels
- Ultra-plush, removable and washable padded inner liner keeps you cool and dry by wicking away sweat (sweat absorbing)
- Removable mouthpiece for easy cleaning
- Durable multi-colored, clear-coated graphics
- Meets standards: DOT and ECE 22-05
- Side goggle traction pad keeps goggle strap securely in place
- High air intake mouth vent with screen lets air in while keeping debris out
- Replacement liners/cheek pads and visors available



glitch: black/neon



flow: red/yellow



flow: blue/red



HELMETS 10 SERIES

10 SERIES HELMETS

Graphic: Color	Part No.	XS	S	M	L	XL	2X
Flow: Red/yellow	0624-2**	01	02	03	04	05	06
Flow: Blue/red	0624-3**	01	02	03	04	05	06
Glitch: Black/neon	0624-1**	01	02	03	04	05	06





Moto XXX® is a registered Trademark and is distributed by Jim O'Neal Distributing, Inc.

ROCKHARD HUSTLER



SIZES: Adult XS-XXL
AVAILABLE COLORS: Black/white

FEATURES

- Fiberglass construction
- Ultra-plush removable, washable liner with custom graphics
- Multiple vents throughout helmet to keep you cool and dry
- Replacement liners/cheek pads and visors available
- Meets standards: SNELL M2010, DOT and ECE 22-05



volume III



ROCKHARD HUSTLER HELMET

Version	Part No.	XS	S	M	L	XL	2X
Volume III	0801-5**	21	22	23	24	25	26

HUSTLER® is a registered Trademark and is manufactured by Jim O'Neal Distributing, Inc. under license from Hustler.

MOTO XXX OG HELMET



SIZES: Adult XS-XXL

AVAILABLE GRAPHICS: OG character

FEATURES

- Fiberglass construction
- Ultra-plush removable, washable liner with custom graphics
- Multiple vents throughout helmet to keep you cool and dry
- Replacement liners/cheek pads and visors available
- Meets standards: SNELL M2010, DOT and ECE 22-05



og character



MOTOXXX OG CHARACTER HELMET

Color	Part No.	XS	S	M	L	XL	2X
Black/white	0622-1**	01	02	03	04	05	06

MOTO XXX HELMETS



SIZES: Adult XS-XXL

AVAILABLE GRAPHICS: PBX, World Tour

FEATURES

- Lightweight poly-injected construction
- Ultra-plush, removable & washable comfort liner
- Full shell venting for improved aerodynamics and overall cooling
- State of the art designed aerodynamic shell and visor
- Side goggle traction pad keeps goggle strap securely in place
- Meets or exceeds DOT & ECE safety standards
- Replacement liners/cheek pads and visors available



pbx



world tour

MOTOXXX HELMETS

Graphic	Part No.	XS	S	M	L	XL	2X
World Tour	0622-3**	01	02	03	04	05	06
PBX	0622-4**	01	02	03	04	05	06

HELMETS

7 SERIES

7 SERIES
HELMETS

SIZES: Adult XS-XXL

AVAILABLE GRAPHICS: Camo, Crank

FEATURES

- Lightweight injected thermoplastic alloy shell
- DOT Shell weight ($\pm 50g$): 1420g (size L)
- ECE Shell weight ($\pm 50g$): 1260g (size L)
- Multiple shell sizes for optimum fit
- Massive high volume air vent system
- Emergency cheek pad removal system
- State of the art designed aerodynamic shell and visor
- Side goggle traction pad keeps goggle strap securely in place
- Removable/washable moisture wicking comfort liner
- Meets standards: DOT and ECE 22-05
- Replacement liners/cheek pads and visors available



crank: blk/multi





camo: gray/org



camo: green



camo: blk/hi vis

HELMETS

7 SERIES

7 SERIES HELMETS

Graphic: Color	Part No.	XS	S	M	L	XL	2X
Camo: (Matte) Gray/org	0579-0**	01	02	03	04	05	06
Camo: (Matte) Green	0579-3**	01	02	03	04	05	06
Camo: (Matte) Bk/hi vis	0579-2**	01	02	03	04	05	06
Crank: Blk/multi	0579-1**	01	02	03	04	05	06



HELMETS
5 SERIES

5 SERIES HELMETS



SIZES: Adult XS-XXL

AVAILABLE GRAPHICS: Digi Camo, Wingman, California, Vandal

FEATURES

- Polycarbonate/ABS shell construction
- Shell weight (size L): 1350g (±50)
- Ultra-plush removable/washable padded liner keeps you cool and dry by wicking away sweat
- Adjustable visor design
- Multiple air vents help keep you cool and dry
- Durable multi-colored clear coated graphics
- Replacement parts available
- Meets standards: DOT and ECE 22-05



digi camo





vandal: blk/neon yel



vandal: blk/red/blu



california: wht/red



wingman

HELMETS

5 SERIES

5 SERIES HELMETS

Graphic: Color	Part No.	XS	S	M	L	XL	2X
Wingman: Metal/wht	0618-0**	11	12	13	14	15	16
Digi camo: (Matte) blk/gray	0618-4**	21	22	23	24	25	26
California: (Matte) wht/red	0618-5**	11	12	13	14	15	16
Vandal: (Matte) blk/neon	0618-2**	11	12	13	14	15	16
Vandal: (Matte) blk/red/blu	0618-2**	31	32	33	34	35	36



HELMETS 3 SERIES

3 SERIES HELMETS



SIZES: Adult XS-XXL

AVAILABLE GRAPHICS: Matte Black, Shocker, Hurricane, Afterburner

FEATURES

- Shell weight (size L): 1350grams (±50)
- Shell is constructed with durable polycarbonate
- Ultra-plush removable/washable padded liner keeps you cool and dry by wicking away sweat
- Adjustable visor design
- Intake and exhaust vents for ventilation and cooling
- Durable multi-colored clear coated graphics
- Replacement parts available
- Meets standards: DOT and ECE 22-05



matte: matte black





afterburner: blk



hurricane: blk/wht



shocker: blk/blu/red

HELMETS 3 SERIES

3 SERIES HELMETS							
Graphic: Color	Part No.	XS	S	M	L	XL	2X
Shocker: Black/blue/red	0623-4**	01	02	03	04	05	06
Matte: Matte black	0623-0**	21	22	23	24	25	26
Afterburner: Black	0623-2**	21	22	23	24	25	26
Hurricane: Black/white	0623-1**	01	02	03	04	05	06

- » HARDWEAR
- » MAYHEM-LITE
- » ELEMENT
- » FREERIDE

RIDING GEAR

It's the layer of protection that wraps you like a 2nd skin, yet it needs to be comfortable enough, breathable enough, and cut just right so you hardly feel it at all. Making the finest in protective apparel is what we have done for over four decades. Ride in O'Neal and you get the best of both worlds: perfect comfort, flexibility, and feel all while providing protection when you need it most.

MX GEAR







HARDWEAR
RACE FLOW: BLU/YEL/RED

HARDWEAR
RACE FLOW: WHT/BLK/RED

HARDWEAR
RACE FLOW: ORG/YEL/RED

HARDWEAR
FLOW (VENTED): BLK/BLU

HARDWEAR
FLOW: BLK/ORG



ELEMENT
SHOCKER: BLK/BLU/RED

ELEMENT
SHOCKER: BLK/HI-VIZ

ELEMENT
SHOCKER: BLK/ORG

ELEMENT
RACEWEAR: BLK/ORG

ELEMENT
RACEWEAR: BLK/WHT



HARDWEAR
FLOW: BLK/RED

HARDWEAR
FLOW: BLU/RED

MAYHEM-LITE
GLITCH: BLK/NEON

MAYHEM-LITE
GLITCH: BLU/RED/GRY

MAYHEM-LITE
CRANK: BLK/MULTI



ELEMENT
DIGI CAMO: BLACK

ELEMENT
AFTERBURNER: BLK/BLU

APOCALYPSE
THREAT SHADOW: BLACK

APOCALYPSE
THREAT SHADOW: BLK/PINK

ELEMENT
RACEWEAR: PNK/YEL

HARDWEAR

- » FLOW
- » RACE FLOW

RACING TECHNOLOGY

This is where it all comes together. With over 45 years of racing technology and development, the Hardwear line encompasses all the benefits and features known to man and then some! The Hardwear line has received critical acclaim from the world's harshest test labs and editorial staff and is proven to be the toughest protective apparel on the planet!



RIDER KYLE CHISHOLM | +

HARDWEAR GEAR



SIZES: Adult: Jersey S-XXL, Pant 28-40
AVAILABLE GRAPHICS: Flow, Race Flow

FEATURES – JERSEY

- Sublimated no-fade graphic
- High quality, moisture wicking materials
- Extended tail with cooling mesh
- Silicon print on tail to keep your jersey tucked in
- Tagless neck label
- Micro-cuff design decreases restriction
- Extremely flexible collar
- Compatible with all neck braces on the market
- 100% vented jersey (vented color-way only)
- 1 Flow or Race Flow pant matches 3-4 Flow/Race Flow jersey colorways. Buy one or buy them all and have 4 different looks for a fraction of the price!

FEATURES – PANT

- Reduced weight – our lightest Hardwear pant!
- 360 degree adjustable belt keeps pants in place
- Extra long leather heat shield
- Wide accordion knees, sized for knee braces
- Seat padding for extra comfort
- Triple stitched in critical areas for durability
- Lightweight protective rubber patches
- Stretch spandex panels
- Ergonomic pre-bent and padded knee area
- Heavy duty but lightweight denier fabrics
- 1 Flow or Race Flow pant matches 3-4 Flow/Race Flow jersey colorways. Buy one or buy them all and have 4 different looks for a fraction of the price!



race flow: org/yel/red



race flow: wht/blk/red



HARDWEAR JERSEYS

Type: Color	Part No.	S	M	L	XL	2X
Race Flow: Blue/yellow/red	0027-2**	02	03	04	05	06
Race Flow: Orange/yellow/red	0027-1**	02	03	04	05	06
Race Flow: White/black/red	0027-3**	02	03	04	05	06
Flow: Black/orange	0027-5**	02	03	04	05	06
Flow: Blue/red	0027-6**	02	03	04	05	06
Flow: Black/red	0027-4**	02	03	04	05	06
Flow Vented: Black/blue	0027-8**	02	03	04	05	06

HARDWEAR PANTS

Type: Color	Part No.	28	30	32	34	36	38	40
Flow: Black/white	0127-4**	28	30	32	34	36	38	40
Race Flow: White/black/red	0127-3**	28	30	32	34	36	38	40



race flow: blue/yel/red



race flow: wht/blk/red

HARDWEAR

RACE FLOW

flow vented: blk/blu



flow: blk/wht

LET IT FLOW

Keep it fresh for every moto with the new Hardwear Race Flow and Flow kits. The Flow kits feature 1 pant to match multiple colors of jerseys. The Race Flow kit features 3 jersey colors to match 1 Flow pant and the Flow kit features 3 jersey colors + 1 vented jersey color. The O'Neal Hardwear line has been reinvented for 2016, *let it Flow*.



flow: blu/red



flow: blk/org



flow: blk/red

HARDWEAR
FLOW

MAYHEM LITE

» CRANK
» GLITCH

STREAMLINED & LIGHTWEIGHT

Built to be bold and light on feel - the Mayhem Lite gear features bright colors and fast graphics all engineered in the lightest Mayhem gear ever! The ideal choice for track or trail riding, the Mayhem Lite gear offers serious protection in a premium package with a look that is truly one of a kind.



MAYHEM LITE KITS



SIZES: Adult: Jersey S-XXL, Pant 28-42
AVAILABLE GRAPHICS: Crank, Glitch

FEATURES – JERSEY

- Streamlined and lightweight design for the serious racer
- Padded elbows
- Clear silicone printing on lower back to help keep jersey tucked in
- V-neck collar
- Extremely flexible collar
- Multiple panel construction for an ergonomically correct cut and fit
- Sublimated graphics that won't fade
- Extended tail

FEATURES – PANT

- Streamlined and lightweight design for the serious racer
- No rubber thigh patches for reduced weight and increased mobility
- Durable denier fabrics with triple stitching in critical areas
- Leather heat shield
- Reinforced and adjustable elastic waist system with Hook and Loop closure for a precise fit
- Double snaps at waist closure, reinforced with hook and loop to stay secure and keep the zipper in its place
- More durable, wear resistant panels on: seat, inside of legs, and knees
- Lighter weight, more breathable panels, positioned away from bike contact points
- Stretch panels in key points on: front, back, and knees for great freedom-of-movement
- Vented mesh liner
- Ergonomically correct, pre-bent and padded knee area
- Tapered lower leg to prevent bunching in boot
- Removable EVA foam hip protectors



RIDER AUSTIN POLITELLI | ➔

MAYHEM LITE JERSEYS

Type: Color	Part No.	S	M	L	XL	2X
Crank: Black/multi	0023-1**	02	03	04	05	06
Glitch: Black/neon	0023-4**	02	03	04	05	06
Glitch: Blue/red/gray	0023-5**	02	03	04	05	06

MAYHEM LITE PANTS

Type: Color	Part No.	28	30	32	34	36	38	40	42
Crank: Black/multi	0123-1**	28	30	32	34	36	38	40	42
Glitch: Black/neon	0123-4**	28	30	32	34	36	38	40	42
Glitch: Blue/red/gray	0123-5**	28	30	32	34	36	38	40	42



MAYHEM
LITE



glitch: blue/red/gray



glitch: blk/neon



crank: blk/multi



MAYHEM LITE
GLITCH

MAYHEM LITE
CRANK

ELEMENT

- » DIGI CAMO
- » AFTERBURNER
- » RACEWEAR
- » SHOCKER

ELEMENT TECHNOLOGY

Entry-level gear built better than what the other guys offer on their premium line! The Element line brings you race ready graphics, superior materials, and comes in a wide array of colors and sizes to fit the entire family. Made with a roomy, comfy fit, the Element line covers any rider with style.





ELEMENT GEAR



SIZES: Adult: Jersey S-XXL, Pant 28-42
(jersey sizes 3X and 4X and pant sizes 44-52
available in black/white racewear only)

AVAILABLE GRAPHICS: Racewear, Afterburner,
Digi Camo, Shocker

FEATURES – JERSEY

- Breathable, moisture-wicking material
- Sublimated graphics
- Sewn-in elbow padding
- Extended tail that keeps jersey tucked in
- V-neck collar
- Extremely flexible collar

FEATURES – PANT

- Heavy duty but lightweight denier fabrics provide the perfect combination of comfort and protection while riding
- More durable, wear resistant panels on: seat, inside of legs, and knees
- Lighter weight, more breathable panels, positioned away from bike contact points
- Stretch panels in key points on the front, back, and knees of pants for great freedom-of-movement
- Elastic waist with adjustable ratchet closure system for a secure and snug fit
- Protective rubber patches for extra protection when crashing
- Tapered legs with elastic cuffs for a snug fit
- Fully lined for added comfort
- Removable, internal, EVA foam hip protectors



racewear: blk/wht



ELEMENT JERSEYS

Type: Color	Part No.	S	M	L	XL	2X	3X	4X
Racewear: Black/white	0024-1**	02	03	04	05	06	07	08
Shocker: Black/orange	0024-5**	12	13	14	15	16	—	—
Shocker: Black/blue/red	0024-5**	02	03	04	05	06	—	—
Shocker: Black/hi-vis	0024-6**	02	03	04	05	06	—	—
Afterburner: Black/blue	0024-8**	12	13	14	15	16	—	—
Digi camo: Black	0024-2**	02	03	04	05	06	—	—

ELEMENT PANTS

Type: Color	Part No.	28	30	32	34	36	38	40	42	44	46	48	50	52
Racewear: Black/white	0124-1**	28	30	32	34	36	38	40	42	44	46	48	50	52
Shocker: Black/orange	0124-5**	58	60	62	64	66	68	70	—	—	—	—	—	—
Shocker: Black/blue/red	0124-5**	28	30	32	34	36	38	40	42	—	—	—	—	—
Shocker: Black/hi-vis	0124-6**	28	30	32	34	36	38	40	42	—	—	—	—	—
Afterburner: Black/blue	0124-8**	58	60	62	64	66	68	70	72	—	—	—	—	—
Digi camo: Black	0124-2**	28	30	32	34	36	38	40	42	—	—	—	—	—

ELEMENT
RACEWEAR





afterburner: blk/blu



digi camo: black



shocker: blk/hi-vis



shocker: blk/blu/red



shocker: blk/org



ELEMENT SHOCKER



FREERIDE

- » THREAT
- » DEMOLITION
- » ULTRA-LITE
- » APOCALYPSE

SET YOURSELF FREE

The ability to set yourself free! Without restrictive panels, this is the ideal pant for the freeride enthusiast or weekend warrior! O'Neal's freeride line feels like you are hardly wearing anything at all, yet its built tough enough to handle the mishaps that just may happen.

FREERIDE JERSEYS



SIZES: Adult S-XXL (3X and 4X in Threat jersey)
AVAILABLE GRAPHICS: Ultra-lite '85 (cotton), Demolition (cotton), Ultra-lite '70, Threat

FEATURES - COTTON JERSEYS

- Made of 100% combed heavy weight cotton
- Not available in Europe

FEATURES - ULTRA-LITE '70 JERSEY

- Inspired by the heritage of the sport
- Sublimated no-fade graphic
- Padded elbow protection
- Extended tail, with silicon print, to keep your jersey tucked in
- V-Neck collar
- Tag-less neck label

FEATURES - THREAT JERSEY

- Sublimated no-fade graphic
- Versatile graphics match multiple pant designs
- Breathable, moisture-wicking fabric
- Padded elbow protection
- Silicone print on rear of jersey to keep it tucked in



'85: white/red



'85: black/neon



demolition: black



threat: black



ultra-lite '70: blk

FREERIDE JERSEYS

Type: Color	Part No.	S	M	L	XL	2X	3X	4X
Ultra-lite '85: Wht/red	0085-5**	02	03	04	05	06	—	—
Ultra-lite '85: Blk/neon	0085-6**	02	03	04	05	06	—	—
Demolition: Black	0085-8**	12	13	14	15	16	—	—
Threat Shadow	0090-1**	02	03	04	05	06	07	08
Ultra-lite '70: Blk/blk	0019-0**	02	03	04	05	06	—	—

APOCALYPSE PANTS



SIZES: Adult 28-50
AVAILABLE COLORS: Black

FEATURES

- Over-the-boot style pants that easily zip-off into shorts
- Adjustable waist system with with hook-and-loop closure for a precise fit
- 2 zipper pockets for secure storage
- 2 jeans style front pockets
- Heavy-duty denier fabrics for added durability
- Strategic stretch panels for comfort and mobility
- Jeans style front snap, and zipper closure
- Inner leg panel for heat resistance



apocalypse: black



APOCALYPSE PANTS

Type: Color	Part No.	28	30	32	34	36	38	40	42	44	46	48	50
Black	0134-1**	28	30	32	34	36	38	40	42	44	46	48	50

BAJA JACKET



SIZES: Adult: S-XXL
AVAILABLE COLORS: Black

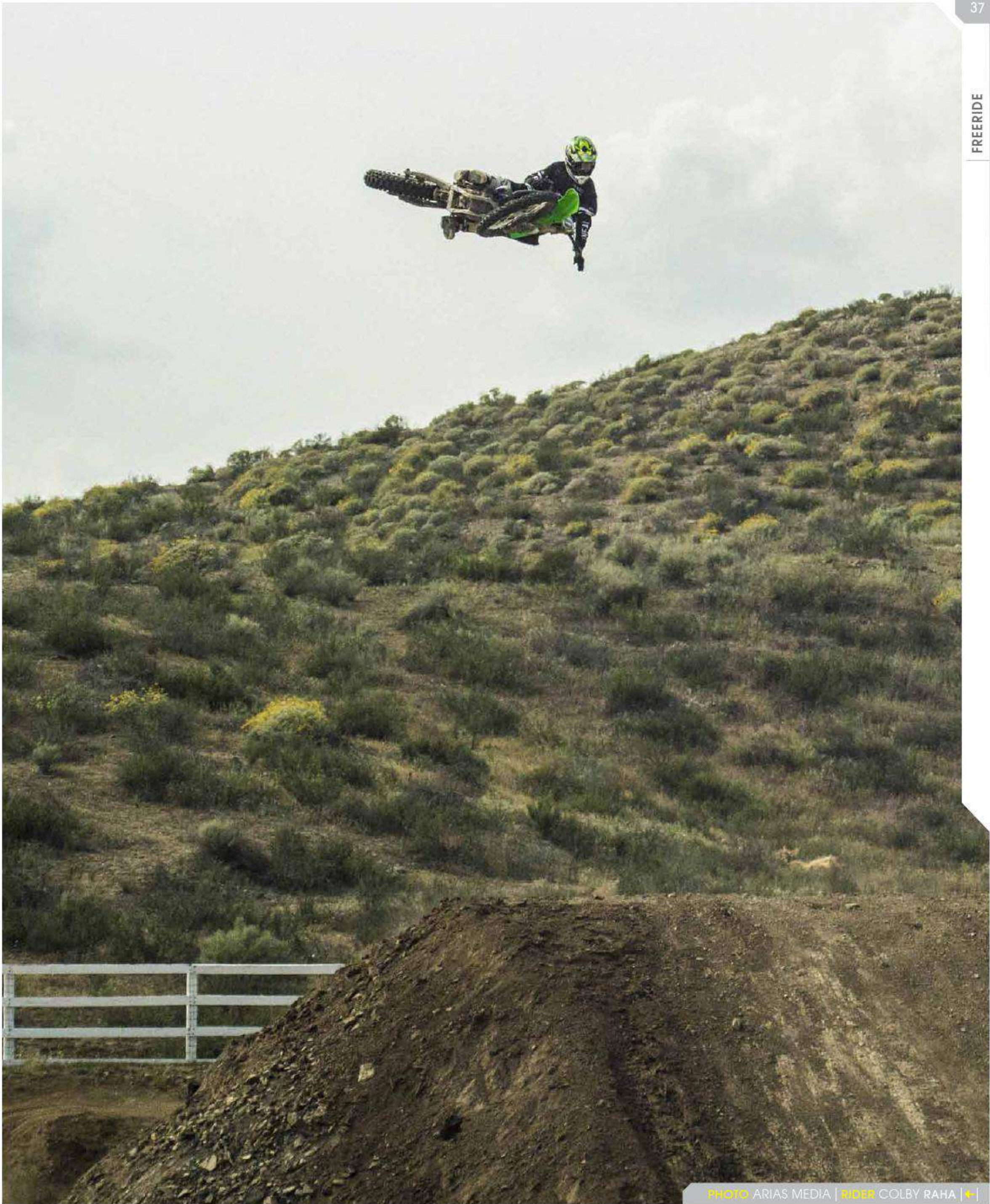
FEATURES

- Windproof, water-repellent shell
- Width adjustment in collar for added comfort
- Protector pockets on shoulder and elbow to insert impact foam
- Waterproof front zipper
- 9 water-resistant pockets
- Vent zipper
- Size adjustable sleeves
- Reflective patches
- Hydration bladder and hose compatible
- Adjustment straps for neck brace
- Document pocket on sleeve
- Removable sleeves

BAJA JACKET

Type: Color	Part No.	S	M	L	XL	2X
Baja: Black	1104-1**	02	03	04	05	06







Genuine Pro

- » BUTCH
- » REACTOR
- » JUMP
- » ELEMENT
- » MATRIX

SECOND SKIN

It's a rare mix to find hand protection that fits like a glove, feels as natural as your skin, and protects you from all the punishment. After more than forty five years of non-stop product development, you indeed get a feel for things. O'Neal gloves are made to wear better than the others, without sacrificing the gentle feel you need while racing. Let your fingers rejoice!

SEMO19

BUTCH CARBON



Clarino

SIZES: Adult S-XXL

AVAILABLE COLORS: Black, white

FEATURES

- Polycarbonate, ballistic coverage, on individual knuckles delivers added confidence while maintaining dexterity
- Additional TPR and direct injection patches on top side of fingers and wrist
- Double layer Clarino® palm padding helps reduce blisters and prevent glove stiffening after drying
- Seamless, silicone rolover fingertips, for enhanced lever control
- Long-lasting, durable, and flexible materials for superior comfort
- Adjustable Hook and Loop wrist closure for secure and adjustable fit
- Pre-curved tailoring for the best fit possible, and helps to eliminate arm pump



butch: black

BUTCH CARBON

Color	Part No.	S	M	L	XL	2X
Black	0468-1**	08	09	10	11	12

REVOLUTION



SIZES: Adult S-XXL

AVAILABLE COLORS: Black, yellow, red

FEATURES

- Our lightest and most comfortable glove
- Extensive use of mesh panels for maximum ventilation
- Single layer vented Nanofront® palm offers unrestricted feel and control whilst giving great durability
- Pre-curved tailoring for the best fit possible, and helps to eliminate arm pump
- Simple, slip-on design is lightweight and non-restrictive



revolution: yel



revolution: red



revolution: blk

REVOLUTION GLOVE

Color	Part No.	S	M	L	XL	2X
Yellow	0384-4**	08	09	10	11	12
Red	0384-6**	08	09	10	11	12
Black	0384-8**	08	09	10	11	12



JUMP



SIZES: Adult S-XXL

AVAILABLE GRAPHICS: Digi Camo, Afterburner, Race, Shocker, Wild, Crank, Pistons, Hustler

FEATURES

- Silicone printing on palms and finger tips for improved grip and braking control
- Long lasting and flexible material for the perfect fit
- Lightweight design with bold, non-fade graphics
- Seamless rolover fingertips
- Synthetic leather palm, with double layer thumb reinforcement
- Adjustable Hook and Loop wrist closure for secure and adjustable fit
- Pre-curved tailoring for the best fit possible, and helps to eliminate arm pump



jump: afterburner

JUMP GLOVE

Graphic: Color	Part No.	S	M	L	XL	2X
Pistons: Blk/wht	0385-0**	08	09	10	11	12
Hustler: Blk/wht	0385-0**	28	29	30	31	32
Wild: Blk/wht	0385-0**	48	49	50	51	52
Digi Camo: Black	0385-0**	88	89	90	91	92
Crank: Blk/multi	0385-1**	28	29	30	31	32
Afterburner: Blk	0385-2**	28	29	30	31	32
Race: Blk/wht	0385-7**	28	29	30	31	32
Shocker: Blk/wht	0385-8**	28	29	30	31	32



jump: crank

jump: pistons

HUSTLER® is a registered Trademark and is manufactured by Jim O'Neal Distributing, Inc. under license from Hustler.



jump: digi camo



jump: hustler

jump: wild



shocker: blk/wht

race: blk/wht

ELEMENT



SIZES: Adult S-XXL

AVAILABLE COLORS: Racewear: Blue, black, red, pink

FEATURES

- Vented mesh top for increased airflow and cooling
- TPR strips for added protection from branches and debris
- Adjustable wrist with Hook and Loop closure for a secure fit
- Stretch Lycra® side panels for added comfort and flexibility
- Ergonomic padding and stitching on palm for increased comfort and dexterity
- Pre-curved tailoring for the best fit possible, and helps to eliminate arm pump

ELEMENT RACEWEAR GLOVE

Color	Part No.	S	M	L	XL	2X	13	14	15
Blue	0399-0**	08	09	10	11	12	—	—	—
Black	0399-1**	08	09	10	11	12	13	14	15
Red	0399-3**	08	09	10	11	12	—	—	—
Pink	0399-7**	06	07	08	09	10	—	—	—



racewear: blue



racewear: black



racewear: red



racewear: pink



MATRIX



SIZES: Adult S-XXL

AVAILABLE GRAPHICS: Wingman, Racewear

FEATURES

- Lightweight, uncomplicated design for superb feel and comfort while riding
- Simple design for great freedom-of-movement
- Long lasting and flexible materials for the perfect fit
- Super lightweight design with bold non-fade graphics
- Synthetic leather palm with double layer thumb reinforcement
- Pre-curved tailoring for the best fit possible, and helps to eliminate arm pump
- Slip-on design



racewear: blk/wht



MATRIX GLOVE

Graphic: Color	Part No.	S	M	L	XL	2X	13	14	15
Wingman: Orange	0388-1**	08	09	10	11	12	—	—	—
Wingman: Blk/neon	0388-2**	08	09	10	11	12	—	—	—
Racewear: Blk/wht	0388-5**	08	09	10	11	12	13	14	15
Racewear: Blu/blk	0388-6**	08	09	10	11	12	—	—	—
Racewear: Wht/red	0388-7**	08	09	10	11	12	—	—	—
Racewear: Org/blk	0388-8**	08	09	10	11	12	—	—	—
Racewear: Pink/yellow	0388-9**	08	09	10	11	12	—	—	—



racewear: blk/blu



racewear: wht/red



racewear: blk/org



racewear: pink/yel



wingman: blk/neon



wingman: blk/org





- » RDX
- » ELEMENT
- » RIDER

DOCTOR'S ORDERS

For boot development, we put our best foot forward! Dr. Doug Dubach has been an O'Neal test pilot for over 30 years and a Factory Yamaha test rider for over 25 years. As a 22 time Vet World Champion, nobody knows the importance of boot protection better than the Doctor. All O'Neal boots are thoroughly dirt tested and Doctor approved!

MX BOOTS



360° rubber gaiter seals out dirt and rocks

Pull-on nylon strap

Quick-dry air mesh lower interior

Rubber pull-tab hook and loop shin plate closure

One-piece TPU plastic floating upper body

Easy to clean upper nylon interior

Replacement ratchet, straps, buckles, rubber sole, foot bed insert, boot upper body and service kit are available

Adjustable shin plate accommodates larger calf sizes in 3 settings for a custom fit

Dual compound rubber/plastic for extra flex at the bottom of the shin plate

3 piece super grip and heat resistant rubber plates, for constant contact with the bike

"Vice Ratchet Strap" garage for ratchet strap concealment

Padded microfiber foam tongue

Wrap around Gel and Latex foam interior ankle support

3 Aluminum Alloy double pin and "Lock Snap" buckles

Wrap around embossed upper base layer

Aluminum body "Vice Ratchet Strap" ensures the perfect, secure fit around the ankle

"Full Tilt RDX Pivot System" allows maximum forward and rear motion

Vertical height adjustment allows a custom fit for taller riders

Pro style "Quick Shift Heel" for heel shifting on the start gate

Double reinforced stitch on a TPU plastic outer shell

Textured grip shift plate

Replaceable hard compound rubber sole insert

Slim toe box height for the perfect shift

Extended length steel shank

Ergonomically designed sole allows for both aggressive riding and comfortable walking

"Army Rubber" bonded sole with heavy duty adhesive and a hidden reinforced lock stitch

Plush EVA foam footbed insert with graphic print details

Double-layered cushioned heel



Replacement ratchet, straps, buckles, rubber sole, foot bed insert, boot upper body and service kit are available

Adjustable shin plate accommodates larger calf sizes in 3 settings for a custom fit

Dual compound rubber/plastic for extra flex at the bottom of the shin plate



3 piece super grip and heat resistant rubber plates, for constant contact with the bike

"Vice Ratchet Strap" garage for ratchet strap concealment

Padded microfiber foam tongue

Wrap around Gel and Latex foam interior ankle support



3 Aluminum Alloy double pin and "Lock Snap" buckles

Wrap around embossed upper base layer



Aluminum body "Vice Ratchet Strap" ensures the perfect, secure fit around the ankle



"Full Tilt RDX Pivot System" allows maximum forward and rear motion

Vertical height adjustment allows a custom fit for taller riders

Pro style "Quick Shift Heel" for heel shifting on the start gate



Slim toe box height for the perfect shift

Ergonomically designed sole allows for both aggressive riding and comfortable walking



"Army Rubber" bonded sole with heavy duty adhesive and a hidden reinforced lock stitch



Plush EVA foam footbed insert with graphic print details

Double-layered cushioned heel

THE RDX
V2.1MX.PRO.SERIES

RDX BOOTS



SIZES: Adult 7-15

AVAILABLE GRAPHICS: White, black, neon

FEATURES

- Aluminum body "Vice Ratchet Strap" ensures the perfect, secure fit around the ankle
- "Full Tilt RDX Pivot System" allows maximum forward and rear motion
- Adjustable shin plate accommodates larger calf sizes in 3 settings for a custom fit
- "Army Rubber" bonded sole with heavy duty adhesive and a hidden reinforced lock stitch
- 3 Aluminum Alloy double pin and "Lock Snap" buckles
- Vertical height adjustment allows a custom fit for taller riders
- 3 piece super grip heat resistant rubber plates, for constant contact with the bike
- Wrap around Gel and Latex foam interior ankle support
- Extended length steel shank
- Slim toe box height for the perfect shift
- Dual compound rubber/plastic for extra flex at the bottom of the shin plate
- Replacement parts: ratchet, straps, buckles, rubber sole, foot bed insert, boot upper body and service kit are available
- Exceeds in Europe EN13634



white



black



neon

RDX BOOTS

Color	Part No.	7/39	8/41	9/42	10/43	10.5/44	11/45	12/46	13/47	14/48	15/49
Black	0328-***	107	108	109	110	210	111	112	113	114	115
White	0328-***	407	408	409	410	310	411	412	413	—	—
Neon	0328-***	507	508	509	510	610	511	512	513	—	—



ELEMENT



SIZES: Adult: 7-15 (black), 7-13 (white)
AVAILABLE COLORS: Black, white (not shown)

FEATURES

- Bonded sole
- Durable construction
- Fully adjustable four buckle closure system
- Tough sole with metal shank
- Injection molded plastic shin plate and protection
- Generous heel support and padding for added comfort
- Built in leather heat shield
- Replacement straps and buckles are available



ELEMENT BOOTS

Color	Part No.	7/39	8/41	9/42	10/43	11/45	12/46	13/47	14/48	15/49
Black	0322-1**	07	08	09	10	11	12	13	14	15
White	0322-2**	07	08	09	10	11	12	13	—	—



ELEMENT SHORTY



SIZES: Adult 6-13
AVAILABLE COLORS: Black

FEATURES

- Bonded sole
- Durable construction
- Fully adjustable two buckle closure system
- Tough sole with metal shank
- Injection molded plastic shin plate and protection
- Generous heel support and padding for added comfort
- Built in leather heat shield
- Replacement straps and buckles are available



ELEMENT SHORTY BOOTS

Color	Part No.	6/38	7/39	8/41	9/42	10/43	11/45	12/46	13/47
Black	0344-1**	06	07	08	09	10	11	12	13



RIDER



SIZES: Adult 7-15

AVAILABLE COLORS: Black

FEATURES

- Injection molded plastic plates protect against impacts
- Metal shank insert reinforces the shape of the boot and adds support
- Easy to operate, Snap-Lock adjustable four buckle closure system
- Durable Goodyear welt sole is properly balanced with no unstable rocking
- Metal toe guard to protect the sole against delaminating
- Moderate grip sole is great for track, trail and ATV riders
- Air mesh interior, generous heel support and cushioned insole for extra comfort
- Synthetic leather heat shield to prevent heat damage
- Rear pull tab for extra leverage
- Replacement straps and buckles are available



black

RIDER BOOTS

Color	Part No.	6/38	7/39	8/41	9/42	10/43	11/45	12/46	13/47	14/48	15/49
Black	0324-1**	06	07	08	09	10	11	12	13	14	15

- » CHEST/BODY
- » PADDED SHORTS
- » KNEE/SHIN

PROTECT YOURSELF

For more than 45 years it has been about protection – protection from debris, roots, rocks, and branches. When it comes to safety and function O'Neal's full-line of protection provides sizes, features, and function for every type of rider on all types of terrain.

PROTECTION





UNDERDOG III



NECK
BRACE
Compatible



SIZES: Adult S-XXL

AVAILABLE COLORS: Black

FEATURES

- Constructed from high-impact resistant, injection molded plastic, and IPX® material designed to protect your: shoulders, elbows, forearms, chest, and back
- IPX® back protector extends from the base of the neck to lower back; helping ensure complete protection where you need it most
- Back protector zips off for easy cleaning
- Extensive mesh venting helps keep you cool while riding
- Adjustable elastic kidney belt with Hook and Loop closure for a secure fit
- Neck brace compatible
- Exceeds EN1621 safety standard



underdog III

UNDERDOG BODY ARMOR

Version: Color	Part No.	S	M	L	XL	2X
Underdog III: Black	0571-3**	02	03	04	05	06

UNDERDOG II



SIZES: Youth S-M/L

FEATURES

- Constructed with high impact injection molded plastic to deflect dirt and debris
- Articulated back protector for increased mobility
- Removeable back, elbow and forearms
- Adjustable kidney belt with hook and loop closure
- Extensive mesh and padded foam venting to help keep cool
- 9 areas of adjustment for the perfect fit



underdog II protector

UNDERDOG BODY ARMOR

Version: Color	Part No.	S	M	L	XL	2X
Underdog II: Black	0571-2**	02	03	04	05	06

HOLESHOT PROTECTOR



NECK
BRACE
Compatible

SIZES: Adult M/L

AVAILABLE COLORS: Black

FEATURES

- Neck brace compatible
- Articulated back protector for increased mobility
- Airprene® shoulder padding for comfort
- Integrated waist closure system
- Vented foam padding to keep you cool
- Exceeds EN14021 safety standard

HOLESHOT PROTECTOR

Version: Color	Part No.	M/L
Short: Black	1285-0**	04



short: black

PXR PROTECTOR



NECK
BRACE
Compatible

SIZES: Adult M-L

AVAILABLE COLORS: Black, white

FEATURES

- Neck brace compatible
- Articulated back protector for increased mobility
- Integrated waist closure system
- Venting throughout
- Extensive shoulder and bicep protection

PXR PROTECTOR

Color	Part No.	M/L
White	0734-1**	01
Black	0734-0**	01



pxr: white



pxr: black

TRAIL



COOLMAX®

SIZES: Adult S-XXL

AVAILABLE COLORS: Lime/black

FEATURES

- High-density, EVA foam for added protection in the key impact zones of hips, thighs, and coccyx (tail bone)
- Pads are ergonomically designed to be as comfortable and unobtrusive as possible when worn under riding shorts and pants
- Flat double seams, elasticated waist and legs, and Spandex mesh legs provide a great fit for comfortable riding
- Coolmax® chamois inset for added comfort

TRAIL SHORT

Color	Part No.	S	M	L	XL	2X
Lime/black	1288-0**	02	03	04	05	06



PXR KIDNEY BELT



SIZES: Adult, one size

AVAILABLE COLORS: Black, orange, red, blue

FEATURES

- Provides lower back support when riding
- Gentle compression helps protect lower abdomen and internal organs
- Gives an extra layer of coverage in the event of a crash
- Ergonomic design provides maximum lumbar support combined with comfort to the sides and back
- Tough injection molded plastic outside and comfortable molded bio-foam and Lycra® lining
- Adjusted with 2 external Hook and Loop closure straps to fit a wide range of sizes
- Exceeds EN14021 safety standard



PXR KIDNEY BELT

Part No. 0733-010

PRO III



SIZES: Adult, one size
AVAILABLE COLORS: Black

FEATURES – KNEE GUARD

- Comfortable knee-shin pad to use under your riding pants
- Perfect for BMX, MTB, or MX (short shins fit inside boots)
- Tough plastic knee cap and shin guard
- Articulated joint between knee and shin provides excellent movement while riding
- Adjustable elastic straps with Hook and Loop closures provide a secure, snug, and comfortable fit
- Exceeds EN1621 safety standard



PRO III KNEE GUARDS

Part No. 0251-201

PUMPGUN



SIZES: Adult, one size
AVAILABLE COLORS: Black

FEATURES

- Innovative, hinged knee pivot design, moves with you rather than restricting movement (like many competitor products)
- High-impact resistant, injection molded plastic protection
- 3 elastic and Hook and Loop straps provide a secure and snug fit, ensuring pads stay in place on impact
- Biofoam padding throughout for comfort and protection
- Exceeds EN1621 safety standard

PUMPGUN PIVOT KNEE GUARD

Part No. 0254-006





AJ CATANZARO



CARTER DUBACH



LEVI KILBARGER



SHANE ESPOSITO



DANIEL HERRLEIN



MICHAEL HORBAN



ANDRE MALHERBE



JOHN DESOTO



MORGAN CRAWFORD



TOD SCIACQUA



AUSTIN POLITELLI



ANDREW PICCIUTO



STEVEN KIRK



SCOTT MYERS



DEVEN RAPER



RAVEN



MATT BUYTEN



3RD GENERATION - BRADEN O'NEAL PULLS-OFF 2 WINS AT MAMMOTH



3RD GENERATION - PRESTON O'NEAL



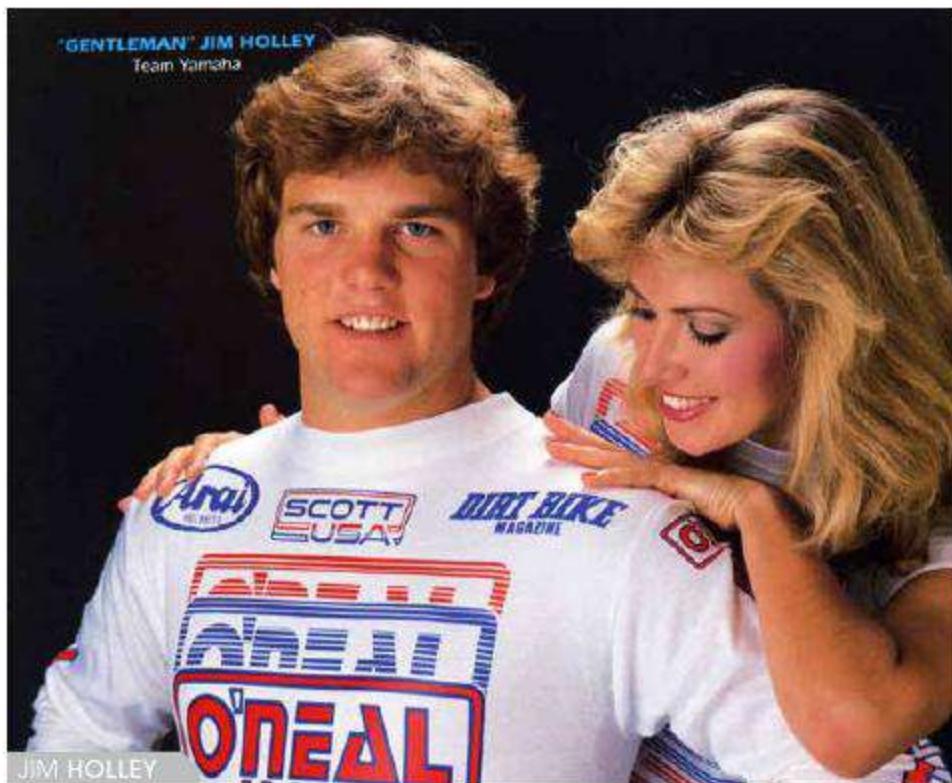
SCUMMY MORRISON



GARRETT AHLF



O'NEAL MODEL SEARCH WINNER - RAVEN



JIM HOLLEY



MAX EDDY



JIM O'NEAL

- » HELMETS
- » RIDING GEAR
- » GLOVES
- » PROTECTION

YOUTH SAFETY

Learning to ride is fun for the entire family! At O'Neal we cover kids from their first weekend out to their first moto win! Gear, protection, helmets and apparel made specifically to fit, function and perform is our speciality.

YOUTH GEAR



5 SERIES YOUTH HELMETS



DOT



SIZES: Youth S-L

AVAILABLE GRAPHICS: Wingman, Vandal

FEATURES

- Polycarbonate/ABS shell construction
- Shell weight (size L): 1350grams (±50)
- Ultra-plush removable/ washable padded liner keeps you cool and dry by wicking away sweat
- Adjustable visor design
- Multiple air vents help keep you cool and dry
- Durable multi-colored clear coated graphics
- Replacement parts available
- Meets standards: DOT, AS/NZS, ECE 22-05, and ACU

5 SERIES YOUTH HELMETS

Graphic: Color	Part No.	S	M	L
Wingman: Metal/wht	0618-4**	42	43	44
Vandal: Blk/neon yel	0618-2**	22	23	24
Vandal: Blk/red/blu	0618-2**	42	43	44



wingman



vandal: blk/red/blu



vandal: blk/neon yel

3 SERIES YOUTH HELMETS



DOT



SIZES: Youth S-L

AVAILABLE GRAPHICS: Afterburner, Shocker

FEATURES

- Shell weight (size L): 1500grams (±50)
- Shell is constructed with durable polycarbonate
- Ultra-plush removable/washable padded liner keeps you cool and dry by wicking away sweat
- Adjustable visor design
- Intake and exhaust vents for ventilation and cooling
- Durable multi-colored clear coated graphics
- Replacement parts available
- Meets standards: DOT, ECE 22-05, AS/NZS and ACU

3 SERIES YOUTH HELMETS

Graphic: Color	Part No.	S	M	L
Shocker: Black/blue/red	0623-4**	12	13	14
Afterburner: Black	0623-2**	32	33	34



afterburner: blk



shocker: blk/blu/red



ELEMENT GEAR



SIZES: Youth: Jersey S-XL, Pant 22-28

AVAILABLE GRAPHICS: Racewear, Afterburner, Digi Camo, Shocker

FEATURES – JERSEY

- Breathable, moisture-wicking material
- Sublimated graphics
- Sewn-in elbow padding
- Extended tail that keeps jersey tucked in
- V-neck collar
- Extremely flexible collar
- Compatible with all neck braces on the market

FEATURES – PANT

- Heavy duty but lightweight denier fabrics provide the perfect combination of comfort and protection while riding
- More durable, wear resistant panels on: seat, inside of legs, and knees
- Lighter weight, more breathable panels, positioned away from bike contact points
- Stretch panels in key points on the front, back, and knees of pants for great freedom-of-movement
- Elastic waist with adjustable ratchet closure system for a secure and snug fit
- Protective rubber patches for extra protection when crashing
- Tapered legs with elastic cuffs for a snug fit
- Fully lined for added comfort
- Removable, internal, EVA foam hip protectors



shocker: blk/blu/red

shocker: blk/org

shocker: blk/hi-vis

ELEMENT YOUTH JERSEY

Graphic: Color	Part No.	XS	S	M	L	XL
RW: Black/white	0025-1**	01	02	03	04	05
RW: Black/org	0025-5**	11	12	13	14	15
RW: Pink/yel	0025-7**	11	12	13	14	15
Afterburner	0025-8**	11	12	13	14	15
Digi Camo	0025-2**	01	02	03	04	05
Shocker: blu/red	0025-5**	01	02	03	04	05
Shocker: blk/org	0025-5**	11	12	13	14	15
Shocker: blk/hi-vis	0025-6**	01	02	03	04	05

ELEMENT YOUTH PANTS

Graphic: Color	Part No.	2/3	4/5	22	24	26	28
RW: Black/white	0124-1**	18	20	22	24	26	27
RW: Black/org	0124-4**	18	20	22	24	26	27
RW: Pink/yel	0124-7**	18	20	52	54	56	—
Afterburner	0124-8**	18	20	52	54	56	57
Digi Camo	0124-2**	18	20	22	24	26	27
Shocker: Blu/red	0124-5**	18	20	22	24	26	27
Shocker: Blk/org	0124-5**	18	20	52	54	56	57
Shocker: Blk/hi-vis	0124-6**	18	20	22	24	26	27



rw: black/white

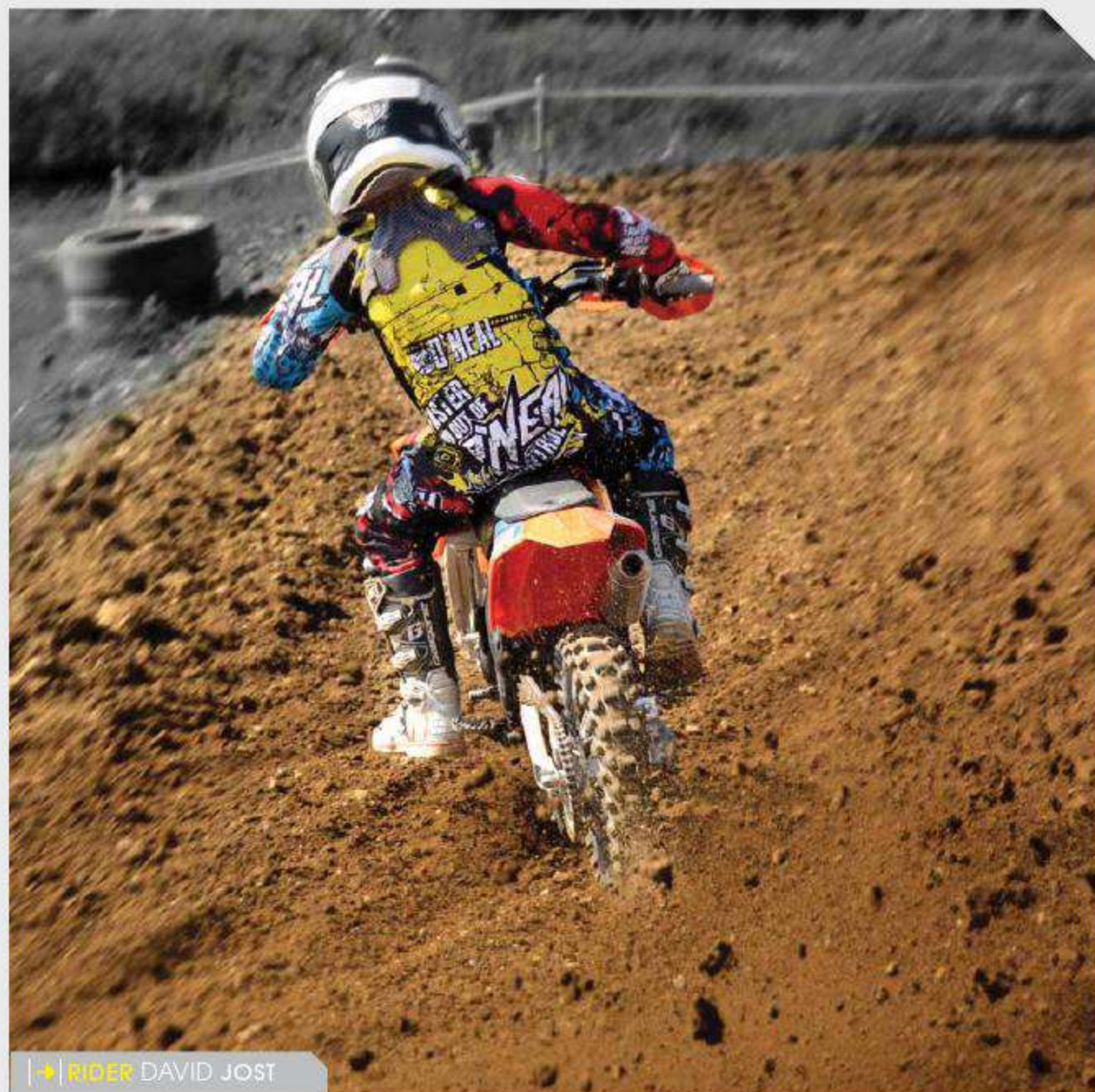
rw: pink/yellow



digi camo: black



afterburner: blk/blu



RIDER DAVID JOST



demolition

DEMOLITION



SIZES: Youth S-XL

AVAILABLE COLORS: Black/white

FEATURES

- Made of 100% combed heavy weight cotton
- Not available in Europe

DEMOLITION YOUTH (COTTON) JERSEY

Color	Part No.	S	M	L	XL
Black/white	0085-4**	02	03	04	05

JUMP



SIZES: Youth 1/2-7 (XS-XL)

AVAILABLE GRAPHICS: Wild, Pistons

FEATURES

- Silicone printing on palms and finger tips for improved grip and braking control
- Long lasting and flexible material for the perfect fit
- Lightweight design with bold, non-fade graphics
- Seamless rolover fingertips
- Synthetic leather palm, with double layer thumb reinforcement
- Adjustable Hook and Loop wrist closure for secure and adjustable fit
- Pre-curved tailoring for the best fit possible, and helps to eliminate arm pump



jump: wild



jump: pistons

JUMP YOUTH GLOVE

Graphic: Color	Part No.	1/2	3/4	5	6	7
Pistons: Blk/wht	0385-0**	01	03	05	06	07
Wild: Blk/wht	0385-0**	—	—	45	46	47

ELEMENT



SIZES: Youth 1/2-7 (XS-XL)

AVAILABLE COLORS: Racewear: Blue, black, red, pink

FEATURES

- Vented mesh top for increased airflow and cooling
- TPR strips for added protection from branches and debris
- Adjustable wrist with Hook and Loop closure for a secure fit
- Stretch Lycra® side panels for added comfort and flexibility
- Ergonomic padding and stitching on palm for increased comfort and dexterity
- Pre-curved tailoring for the best fit possible, and helps to eliminate arm pump



racewear: blue



rw: red

rw: black

rw: pink

ELEMENT YOUTH GLOVE

Color	Part No.	1/2	3/4	5	6	7
Blue	0399-0**	01	03	05	06	07
Black	0399-1**	01	03	05	06	07
Red	0399-3**	01	03	05	06	07
Pink	0399-7**	01	03	05	06	07

MATRIX



SIZES: Youth XS-XL

AVAILABLE GRAPHICS: Wingman, Racewear

FEATURES

- Lightweight, uncomplicated design for superb feel and comfort while riding
- Simple design for great freedom-of-movement
- Long lasting and flexible materials for the perfect fit
- Super lightweight design with bold non-fade graphics
- Synthetic leather palm with double layer thumb reinforcement
- Pre-curved tailoring for the best fit possible, and helps to eliminate arm pump
- USA: slip-on; Europe: Hook and Loop wrist closure



racewear: blk/wht

MATRIX YOUTH GLOVE

Color	Part No.	XS	S	M	L	XL
Racewear: Blk/wht	0388-5**	01	03	05	06	07



RIDER



SIZES: Youth 11/30-3/38

AVAILABLE COLORS: Black, black/pink

FEATURES

- Injection molded plastic plates protect against impacts
- Metal shank insert reinforces the shape of the boot and adds support
- Easy to operate, Snap-Lock adjustable four buckle closure system
- Durable Goodyear welt sole is properly balanced with no unstable rocking
- Metal toe guard to protect the sole against delaminating
- Moderate grip sole is great for track, trail and ATV riders
- Air mesh interior, generous heel support and cushioned insole for extra comfort
- Synthetic leather heat shield to prevent heat damage
- Rear pull tab for extra leverage
- Replacement straps and buckles are available



rider (3-6): black



rider: black/pink



RIDER YOUTH BOOTS

Color	Part No.	K10	11/30	12/31	13/32	1/33	2/34	3/35	4/36	5/37	6/38
Black	0324-***	197	198	199	100	101	102	103	104	105	106
Black/pink	0324-***	—	—	799	701	702	703	704	705	—	—

UNDERDOG III



FEATURES

- Constructed from high-impact resistant, injection molded plastic, and IPX® material designed to protect your: shoulders, elbows, forearms, chest, and back
- IPX® back protector extends from the base of the neck to lower back; helping ensure complete protection where you need it most
- Back protector zips off for easy cleaning
- Extensive mesh venting helps keep you cool while riding
- Adjustable elastic kidney belt with Hook and Loop closure for a secure fit
- Neck brace compatible
- Exceeds EN1621 safety standard



underdog III protector



UNDERDOG YOUTH PROTECTOR

Version: Color	Part No.	SM	MD	LG
Underdog III: Black	0571-***	199	200	201

UNDERDOG II



SIZES: Youth S-M/L

FEATURES

- Constructed with high impact injection molded plastic to deflect dirt and debris
- Articulated back protector for increased mobility
- Removeable back, elbow and forearms
- Adjustable kidney belt with hook and loop closure
- Extensive mesh and padded foam venting to help keep cool
- 9 areas of adjustment for the perfect fit

UNDERDOG YOUTH PROTECTOR

Version: Color	Part No.	SM	MD	LG
Underdog II: Black	0571-3**	02	03	04



underdog II protector

YOUTH PROTECTION

PUMPGUN



FEATURES

- Innovative, hinged knee pivot design, moves with you rather than restricting movement (like many competitor products)
- High-impact resistant, injection molded plastic protection
- 3 elastic and Hook and Loop straps provide a secure and snug fit, ensuring pads stay in place on impact
- Biofoam padding throughout for comfort and protection
- Exceeds EN1621 safety standard

PUMPGUN PIVOT KNEE GUARD

Color	USA No.
Black	0254-007





- » RIDING GEAR
- » BOOTS
- » GLOVES
- » HELMET
- » MX SOCKS

FOR HER

Cut just right for the female figure, O'Neal offers a full-line of riding gear for the ladies that want to hit the dirt! Made to fit in all the right places, O'Neal has been in the front of the pack in product development for female apparel and accessories for decades!

WOMEN'S

WOMEN'S GEAR



SIZES: Women's: Jersey S-XXL, Pant 1/2-13/14
AVAILABLE GRAPHICS: Racewear, Threat Shadow, Demolition

FEATURES – RACEWEAR/THREAT JERSEY

- Breathable, moisture-wicking material
- Sublimated graphics
- Sewn-in elbow padding
- Extended tail that keeps jersey tucked in
- V-neck collar

FEATURES – DEMOLITION JERSEY

- Made of 100% combed heavy weight cotton

FEATURES – ELEMENT PANT

- Heavy-duty but lightweight denier fabrics provide the perfect combination of comfort and protection while riding
- Women's specific fit
- More durable, wear resistant panels on: seat, inside of legs, and knees
- Stretch panels in key points on the front, back, and knees of pants for great freedom of movement
- Elastic waist with adjustable ratchet closure system for a secure and snug fit
- Protective rubber patches for extra protection
- Tapered legs with elastic cuffs for a snug fit
- Fully lined for added comfort
- Removable, internal, EVA foam hip protectors

FEATURES – APOCALYPSE PANT

- Over-the-boot style pants that easily zip-off into shorts
- Women's specific fit
- Adjustable waist system with Hook and Loop closure for a precise fit
- 2 zipper pockets for secure storage
- 2 jeans style front pockets
- Heavy-duty denier fabrics for added durability
- Strategic stretch panels for comfort and mobility
- Jeans style front snap, and zipper closure
- Hook and Loop closures on ankles for secure fit

FEATURES - ELEMENT GLOVE

- Vented mesh top for increased airflow and cooling
- TPR strips for added protection
- Adjustable wrist with Hook and Loop closure for a secure fit
- Stretch Lycra® side panels for added comfort and flexibility
- Ergonomic padding and stitching on palm for increased comfort and dexterity
- Pre-curved tailoring for the best fit possible



element: pink/yellow



threat: black/pink



demolition '15



element: pink/yellow



apocalypse: black



pink

WOMEN'S JERSEYS

Style	Part No.	S	M	L	XL	2X
Element	0024-7**	12	13	14	15	16
Threat	0090-7**	02	03	04	05	—
Demolition	0085-7**	12	13	14	15	—

WOMEN'S PANTS

Style	Part No.	1/2	3/4	5/6	7/8	9/10	11/12	13/14
Element	0124-7**	57	58	60	62	64	66	68
Apocalypse	0134-8**	01	03	05	07	09	11	13



WOMEN'S GLOVE

Style	Part No.	S	M	L	XL	2X
Element	0399-7**	06	07	08	09	10

3 SERIES WOMEN'S HELMET



3 SERIES WOMEN'S HELMET

Graphic: Color	Part No.	XS	S	M	L	XL	2X
Sawyer: Black/multi	0623-7**	01	02	03	04	05	06

SIZES: Adult XS-XXL
AVAILABLE GRAPHICS: Sawyer

FEATURES

- Shell weight (size L): 1500grams (±50)
- Shell is constructed with durable polycarbonate
- Ultra-plush removable/washable padded liner keeps you cool and dry by wicking away sweat
- Adjustable visor design
- Intake and exhaust vents for ventilation and cooling
- Durable multi-colored clear coated graphics
- Replacement parts available
- Meets standards: DOT, ECE 22-05, and ACU



3 series: sawyer

RIDER BOOT



SIZES: Women's 5-12
AVAILABLE COLORS: Black/pink

FEATURES

- Injection molded plastic plates protect against impacts
- Metal shank insert reinforces the shape of the boot and adds support
- Easy to operate, Snap-Lock adjustable four buckle closure system
- Durable Goodyear welt sole is properly balanced with no unstable rocking
- Metal toe guard to protect the sole against delaminating
- Moderate grip sole is great for track, trail and ATV riders
- Air mesh interior, generous heel support and cushioned insole for extra comfort
- Synthetic leather heat shield to prevent heat damage
- Rear pull tab for extra leverage
- Replacement straps and buckles are available



RIDER WOMEN'S BOOT

Color	Part No.	5	6	7	8	9	10	11	12
Black/pink	0324-7**	05	06	07	08	09	10	11	12

MX SOCKS



SIZES: Women's One Size (*also available in youth)
AVAILABLE GRAPHICS: Xoxo, Rainbow, Wild

FEATURES

- Knee-high sock height
- Moisture wicking materials
- Thick knit in heel and sole for comfort and shock absorption
- High density materials for durability
- Ribbed arch and ankle for a secure fit
- Composition: 80% Acrylic, 15% Polyamide, 5% Spandex



xoxo*

rainbow

wild

MX SOCKS WOMEN'S

Graphic	Part No.
Xoxo	0356-604
Wild	0356-704
Rainbow	0356-709

WOMEN'S GEAR



- » MX SOCKS
- » STADIUM BLANKET
- » GEAR BAG
- » MOTO UMBRELLA

ESSENTIALS

A day at the track is not the same without the proper essential accessories. Don't leave home without them!



ACCESSORIES

MX SOCKS



SIZES: Adult one size (*also available in youth)

AVAILABLE GRAPHICS: Xray, Xoxo, Crossbones, Bigfoot, Bomber, Wild, Rainbow, Victory, Afterburner, Woods Camo, Torch, V-Twin, Eagle

FEATURES - PRINT SOCKS

- Knee-high sock height
- Moisture wicking materials
- Thick knit in heel and sole for comfort and shock absorption
- High density materials for durability
- Ribbed arch and ankle for a secure fit
- Composition: 80% Acrylic, 15% Polyamide, 5% Spandex

FEATURES - PRO XL

- High-high, designed for riders wearing knee braces or knee cups
- Leg constructed of lightweight materials with mesh back for added venting
- Thick knit in heel and sole for comfort, shock absorption and moisture management
- Ribbed arch and ankle for a secure fit

MX SOCKS

Graphic	Part No.
Pro XL	0356-310
Xray	0356-602
Xoxo	0356-604
Crossbones	0356-609
Wild	0356-704
Rainbow	0356-709
V-twin	0356-720
Afterburner	0356-717
Woods Camo	0356-718
Big foot	0356-701
Torch	0356-719
Victory	0356-713
Eagle	0356-721
Bomber	0356-703



bigfoot

wild

pro xl



crossbones

xoxo*

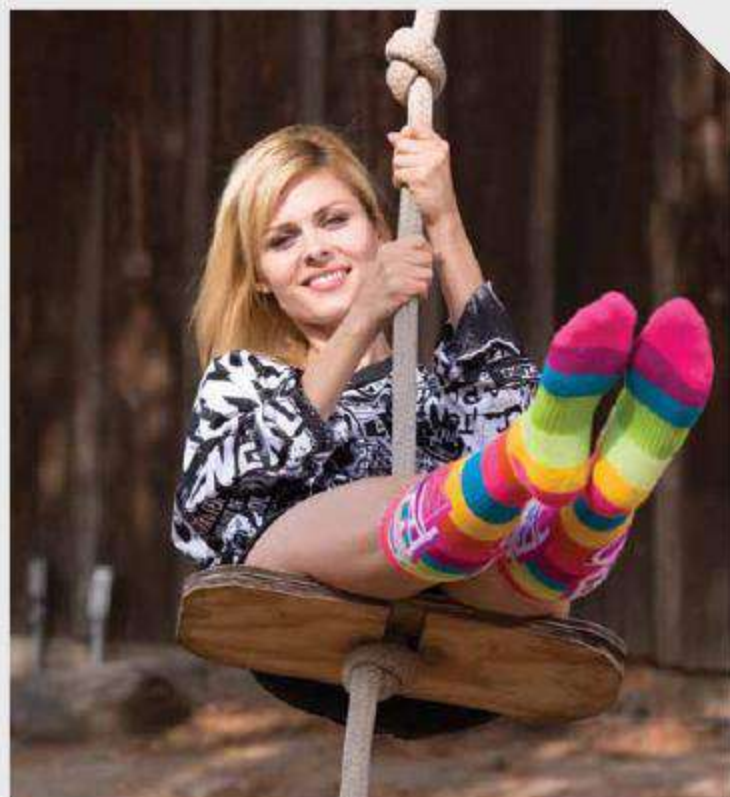
eagle

xray*

rainbow

victory

bomber*



woods camo

afterburner

torch

v-twin



MX-3 BAG



SIZE: 30" L x 18" H x 16" W

FEATURES

- One large main compartment, two end boot bays, and three side pockets
- Mesh venting in every compartment
- Detachable padded shoulder strap
- Heavy-duty zippers
- Bold non-fade graphics

MX-3 GEAR BAG

Graphic Toxic Part No. 1315-008



MOTO UMBRELLA



SIZE: 40" when open, 37" in height

FEATURES

- Starting gate approved!
- Ergonomic grip
- Storage sleeve

MOTO UMBRELLA

Graphic Toxic Part No. 3069-101

STADIUM BLANKET



SIZE: 60" x 80"

FEATURES

- Large, thick fleece stadium blanket that's perfect for a night at the races



STADIUM BLANKET

Graphic Black/White Part No. 1115-002



15PK STICKER KIT

Size Multi/Kit Part No. 5010-015



20PK RETRO STICKER KIT

Size Multi/Kit Part No. 5010-010



TRACK BANNER

Size 2' x 8' Part No. 5080-005

TRACK BANNER

Size 1' x 4' Part No. 5080-003



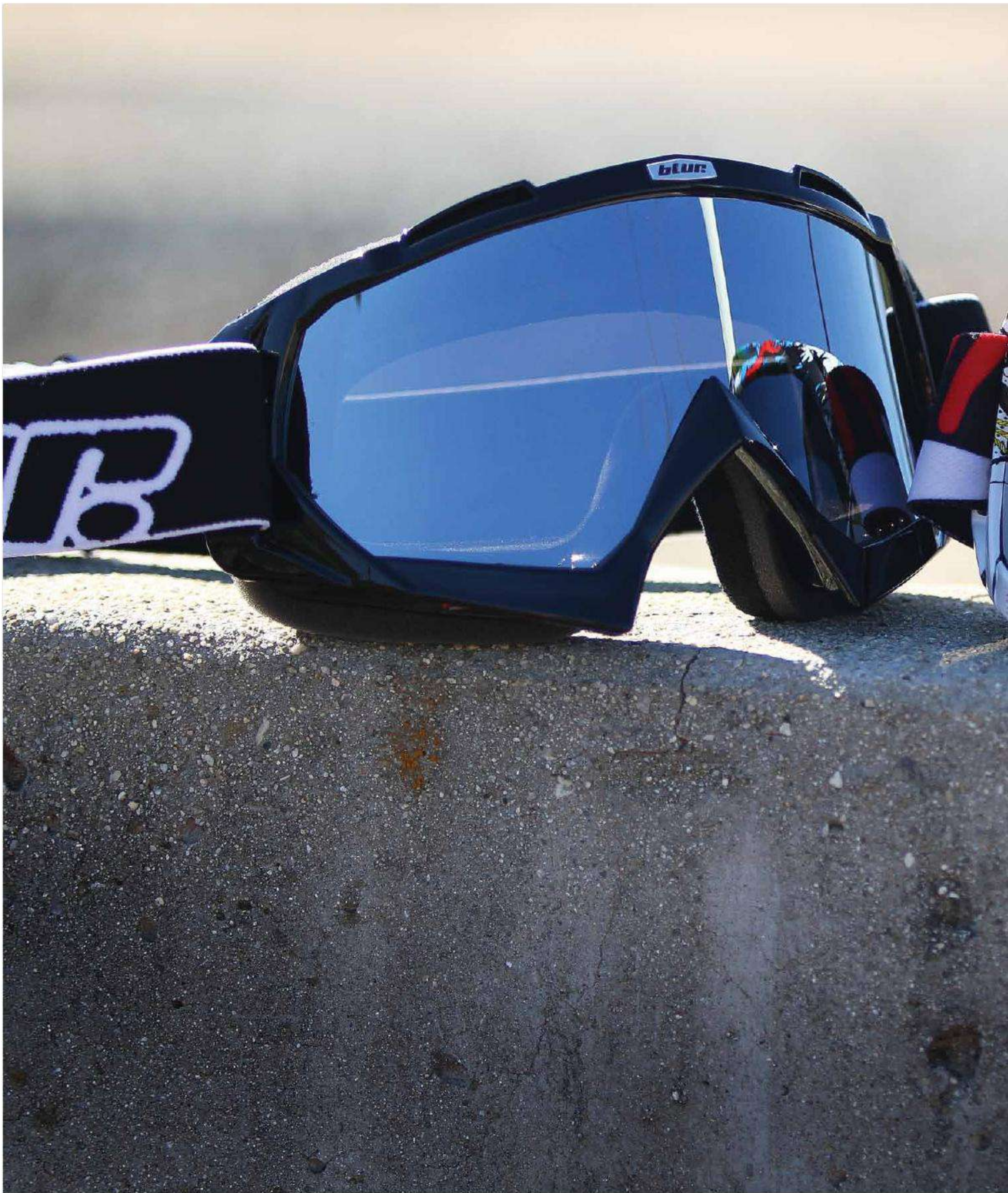
MX WINDOW STICKER

Size 16" Part No. 5010-008



MX TRAILER STICKER

Size 30" Part No. 5010-009





BLUR
S T A Y F O C U S E D

» B-FLEX
» B-ZERO

It's time to take a look and see things more clearly. **Blur Optics** is crafted using premium materials for optimal vision on and off the bike. In any condition and along any terrain, **Blur** is sure to allow you to stay focused and keep your eyes on the prize!

BLUR B-FLEX

SIZES: Adult one size & Junior one size
AVAILABLE COLORS: Villain, white, black

FEATURES

- Polyflex urethane frame
- Perimeter ventilation
- Contoured hydrophilic face foam
- Double buckle and a high quality woven strap with silicone
- Replacement lenses and tear-offs also available

**B-FLEX GOGGLES**

Style	Part No.
Black	6024-210
White	6024-204
Villain	6024-211

B-FLEX JR. GOGGLES

Style	Part No.
Black	6024-310
White	6024-304

B-FLEX REPLACEMENT LENSES

Style	Part No.
Clear	6021-700
Smoke	6021-701

B-FLEX TEAR-OFFS

Style	Part No.
Clear (20pk)	6021-709



villain



white



black

blur**blur**

jr. white



jr. black

BLUR B-ZERO



SIZES: Adult one size

AVAILABLE COLORS: White, black, red, blue

FEATURES

- Lightweight and flexible frame
- Anti-fog, UV400 lens
- Perimeter ventilation
- Single layer foam
- Double buckle and a high quality strap with silicone grip
- Replacement lenses, tear-off lens with posts and tear-offs available

B-ZERO GOGGLES

Style	Part No.
Black	6030-000
White	6030-001
Red	6030-002
Blue	6030-003

B-ZERO REPLACEMENT LENSES

Style	Part No.
Clear	6021-703
Smoke	6021-704

B-ZERO TEAR-OFFS

Style	Part No.
Clear (20pk)	6021-710



white



black



red

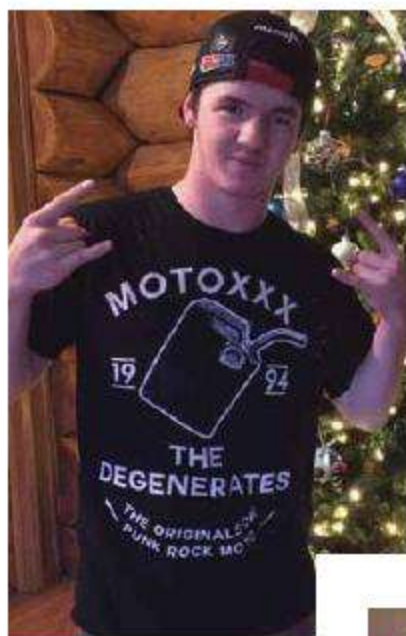


blue





Moto XXX ®
is a registered
Trademark and
is distributed by
Jim O'Neal
Distributing, Inc.



Back in '94 the most unlikely of characters joined together to change our sport and the industry forever! **Moto XXX** burst onto the scene with a vengeance releasing the **Moto XXX** videos and launching their own race team to compete in Supercross. Made up of misfits, degenerates and those that have been cast aside, **Moto XXX** entered the Supercross pits for round one in a funky-ass box van with a crazy paint scheme, carrying two riders, who were far too edgy for a corporate sponsor. With music blaring, hot chicks flocking and free promo items flying, the pits became a party scene centered around the new **Moto XXX** team! One round later the team shocked the world as Brian Deegan won the night's 125 Supercross event launching his bike on a ghost-ride as he crossed over the finish line!

Moto XXX went on to be the most infamous privateer team in racing history! **Racer X** magazine named the team "An American Icon who in fact changed the face of Motocross and freestyle forever!"

Moto XXX developed into a complete MX culture. It has captured it's culture exclusively in the **Moto XXX** line of casual for your daily debauchery. **Wear It out!**

MOTO XXX T-SHIRTS



SIZES: Men's S-XXL and Youth S-L
(youth in OG Character tee only.)

FEATURES

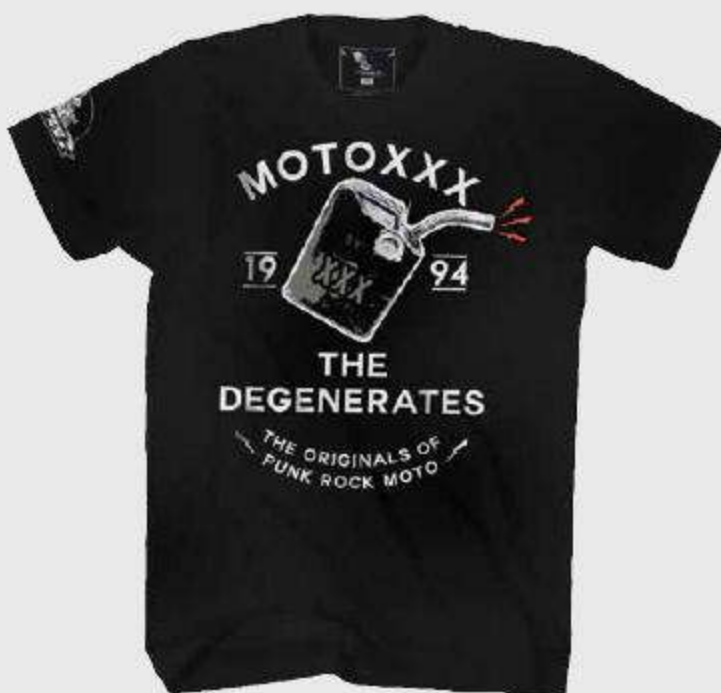
- 100% Ringspun Cotton
- Tagless neck label design
- Soft touch screen printed graphics



world tour



bad kid



degenerates



babes: black



privateer



babes: gray



og character

MOTO XXX T-SHIRTS

Style	Part No.	SM	MD	LG	XL	2X
Speed Demon	1024-0**	72	73	74	75	76
OG Character	1024-1**	02	03	04	05	06
MFG	1024-1**	72	73	74	75	76
Wheelie	1024-3**	22	23	24	25	26
Bad Kid	1024-4**	02	03	04	05	06
Degenerates	1024-6**	02	03	04	05	06
Ignite	1024-1**	82	83	84	85	86
Babes: Black	1024-2**	32	33	34	35	36
Babes: Gray	1024-1**	92	93	94	95	96
Kickstart	1024-2**	52	53	54	55	56
Privateer	1024-2**	42	43	44	45	46
Native	1024-2**	62	63	64	65	66
Hard Pack	1024-2**	72	73	74	75	76
World Tour	1024-1**	42	43	44	45	46



hard pack



speed demon



mfg



ignite



kickstart



wheelie



native



WORLD WIDE TOUR

AUG 11	LOS ANGELES USA	JAN 1	VIENNA AUSTRIA
AUG 15	ROO DE JANEIRO BRAZIL	JAN 24	HAULI HAWAII
AUG 19	STUTTGART GERMANY	JAN 27	TOKYO JAPAN
SEPT 12	BOGOTA COLOMBIA	MAR 12	CAIRO EGYPT
SEPT 21	SYDNEY AUSTRALIA	MAR 20	TORONTO CANADA
SEPT 23	MADRID SPAIN	APR 3	LONDON ENGLAND
OCT 9	CAPE TOWN SOUTH AFRICA	APR 4	PARIS FRANCE
NOV 17	STOCKHOLM SWEDEN	APR 19	DUBLIN IRELAND
NOV 21	TOKYO JAPAN	JUNE 1	BANGKOK THAILAND
DEC 7	MOSCOW RUSSIA	JULY 9	NEW YORK USA

'94-'95

MOTO XXX OG HELMET



SIZES: Adult XS-XXL

AVAILABLE GRAPHICS: OG Character

FEATURES

- Fiberglass construction
- Ultra-plush removable, washable liner with custom graphics
- Multiple vents throughout helmet to keep you cool and dry
- Replacement liners/cheek pads and visors available
- Meets standards: SNELL M2010, DOT, ECE 22-05, AS/NZS and ACU

og character



MOTOXXX OG CHARACTER HELMET

Color	Part No.	XS	S	M	L	XL	2X
Black/white	0622-1**	01	02	03	04	05	06

MOTO XXX HELMETS

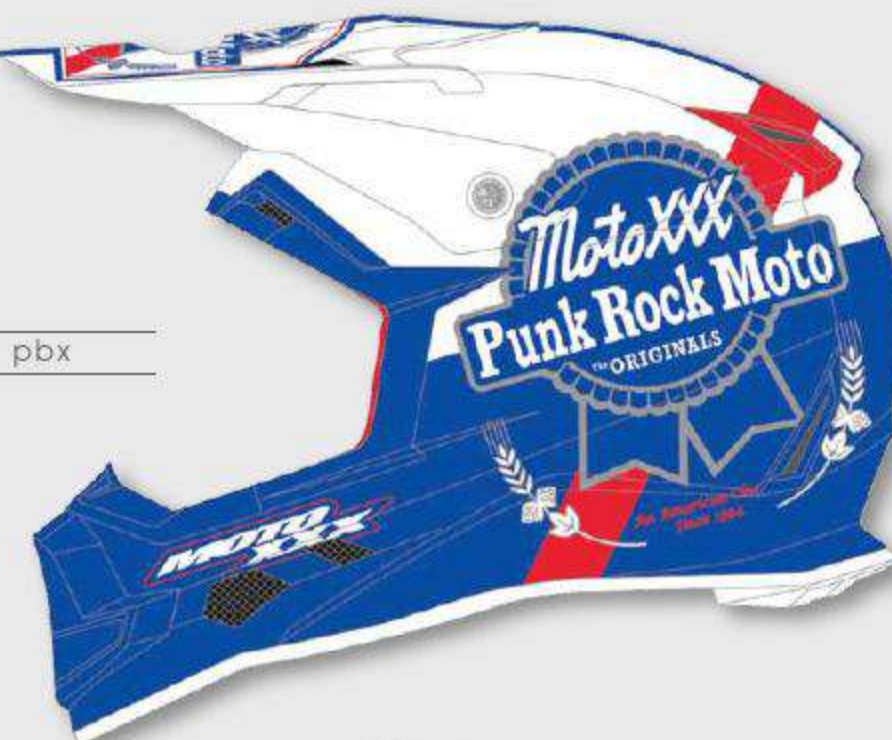


SIZES: Adult XS-XXL

AVAILABLE GRAPHICS: PBX, World Tour

FEATURES

- Lightweight poly-injected construction
- Ultra-plush, removable & washable comfort liner
- Full shell venting for improved aerodynamics and overall cooling
- State of the art designed aerodynamic shell and visor
- Side goggle traction pad keeps goggle strap securely in place
- Meets or exceeds DOT & ECE safety standards



pbx

MOTOXXX HELMETS

Graphic	Part No.	XS	S	M	L	XL	2X
World tour	0622-3**	01	02	03	04	05	06
PBX	0622-4**	01	02	03	04	05	06



world tour

MOTO XXX GOODS



SIZES: One size
 AVAILABLE GOODS: Snapback hat, Tyvek® wallet

FEATURES - HATS

- Snapback hat design
- Woven patch detailing

FEATURES - Tyvek® WALLET

- Water-resistant, tear-resistant, slim design wallet made of Tyvek® material to withstand years of punishment and abuse.
- 2 large pockets for cash and receipts
- 2 credit card pockets that can hold multiple cards
- 2 business card pockets



wallet: blk/wht



og character



international



ninety four

MOTO XXX GOODS

Item: Graphic	Part No.
Hat: Og Character	1025-001
Hat: International	1025-003
Hat: Ninety Four	1025-002
Wallet: Blk/wht	1025-200







FOUR PATRIOT T-SHIRT

Color	Part No.	M	L	XL	2X
Patriot	4500-4**	33	34	35	36

FOUR GLOVE

Color	Part No.	6	7	8	9	10	11	12
Black	4373-1**	06	07	08	09	10	11	12



ATV
ONLY

FOUR



ATV RACING APPAREL



» O'NEAL
» ROCKHARD

STREET RIDING

For some, the need for speed happens on the street. The open road ahead leads to a world of opportunities. O'Neal offers a range of premium essentials for those that want to put it on the pavement.

STREET GEAR

COMMANDER BT**SIZES:** Adult size XS-XXL**AVAILABLE COLORS:** White, black, flat black, hi-viz**FEATURES**

- Meets DOT/ECE safety standards
- Anti-scratch & anti-fog shield
- Built-in drop-down sun visor
- Removable and washable microfiber suede liner and cheek pads
- Fully adjustable flow-through ventilation
- Integrated aerodynamic spoiler
- Double D-ring chin strap with retention system
- Adjustable nylon chin strap with secure snap
- FCC approved
- Bluetooth 2.0 technology
- 10 hours talk time, 130 hours standby
- 2 high quality speakers with full stereo sound
- 100 foot rider to rider intercom
- Listen to gps voice commands
- One touch control for call answering, rejecting, and redialing
- Incoming phone call overrides intercom, music, and navigation audio
- Lithium-polymer battery with a power charger
- Replacement parts available



white



black



flat black



hi-viz

O'NEAL COMMANDER BLUETOOTH HELMET

Color	Part No.	XS	S	M	L	XL	2X
Black	0807-1**	01	02	03	04	05	06
White	0807-2**	01	02	03	04	05	06
Flat Black	0807-4**	01	02	03	04	05	06
Hi-Viz	0807-6**	01	02	03	04	05	06

BUTCH CARBON**SIZES:** Adult S-XXL**AVAILABLE COLORS:** Black**FEATURES**

- Polycarbonate, ballistic coverage, on individual knuckles delivers added confidence while maintaining dexterity
- Additional TPR and direct injection patches on top side of fingers and wrist
- Double layer Clarino® palm padding helps reduce blisters and prevent glove stiffening after drying
- Seamless, silicone rolover fingertips, for enhanced lever control
- Long-lasting, durable, and flexible materials for superior comfort
- Adjustable Hook and Loop wrist closure for secure and adjustable fit
- Pre-curved tailoring for the best fit possible, and helps to eliminate arm pump

**BUTCH CARBON**

Color	Part No.	S	M	L	XL	2X
Black	0468-1**	08	09	10	11	12



ROCKHARD HUSTLER



SIZES: Adult S-XXL

AVAILABLE GRAPHIC: Hustler Volume III

FEATURES

- Advanced Polycarbonate Composite Shell
- Lightweight, superior fit and comfort using advanced CAD technology
- Aerodynamic shell with large eyeport for greater visibility
- Impact absorbing, multi-density EPS liner
- Advanced Channeling Ventilation System
- Coolever® interior: Moisture-wicking and odor-free interior with advanced SilverCool® anti-bacterial fabric
- Easy Shield Replacement System
- SunShield Visor System
- Nylon Strap Retention System

ROCKHARD HUSTLER VOL. III HELMET

Color	Part No.	XS	S	M	L	XL	2X
Vol. III	0800-5**	21	22	23	24	25	26



Rockhard

HELMETS™

» HUSTLER VOL. 3

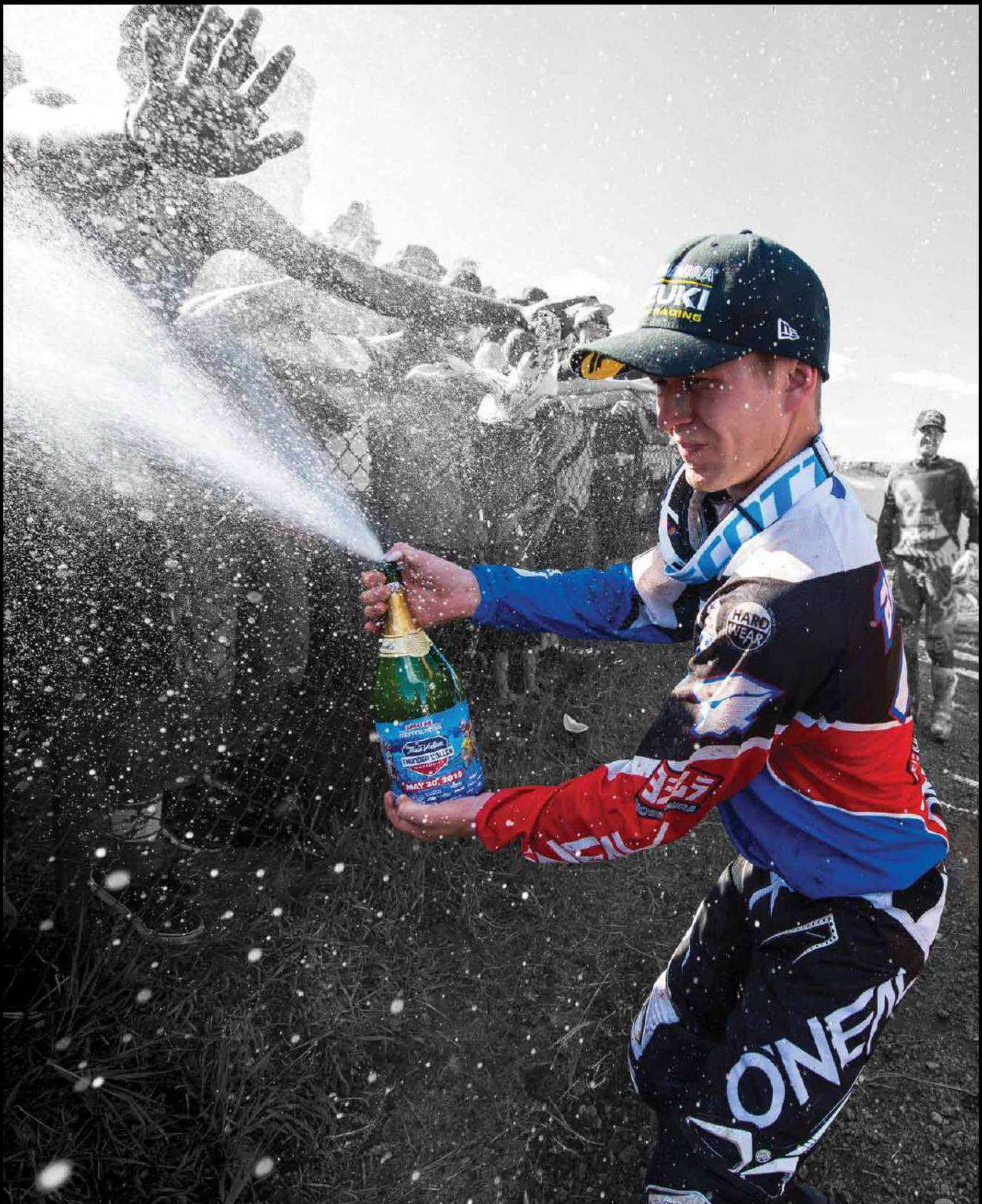
ROCKHARD

Rockhard helmets are the ultimate expression in the purest form. Each helmet is produced with exclusive graphics personally approved by the world's greatest music artists and pop culture icons. Each helmet is produced in limited quantity with each helmet certified and with it's own Certificate of Authenticity. Once they are gone, they are GONE!









O'NEAL

Check out the collection of full face motorcycle helmets we offer.