



PROTAPER

2018



CONTENTS

HANDLEBARS	2-13
GRIPS	14-27
LEVERS/PERCHES	30-31
THROTTLE TUBES	32-33
FOOTPEGS	34
BRAKE PADS	35
SPROCKETS	38-40
CHAINS	42-45
HANDLEBAR PADS	48-49
BRUSH GUARDS	50
HANDLEBAR MOUNTS	51
GRIP ACCESSORIES	52-53
TIE-DOWNS.....	54
HOUR METER.....	54
ACCESSORIES.....	56
DEALER DISPLAYS	57
CASUAL	58-61
PROTAPER SPORT.....	62-65
APPLICATIONS (PROTAPER).....	66-89
APPLICATIONS (PROTAPER SPORT).....	90-93





HANDLEBARS



ABOUT

The Fuzion Handlebar is a new concept in high-performance control systems. Its revolutionary flex locking design allows riders to choose between a stiffer, more controlled handlebar feel and a softer, more shock-absorbing one, depending on terrain conditions. Switching between the “Locked” and “Unlocked” settings takes only seconds. The handlebar itself utilizes ProTaper’s exclusive 2000 series T6 aluminum alloy with a computer-profiled 5 mm-thick wall design for the ultimate in lightweight strength.

FEATURES

- “Unlocked” function allows crossbar to telescope, increasing handlebar flex
- “Locked” function connects the crossbar, creating solid, predictable feedback for the rider
- Exclusive 5 mm-thick 2000 series T6 aluminum alloy offers superior tensile and yield strengths
- Cold-forged aluminum crossbar
- CNC machined 6061 aluminum crossbar clamps adhered with aerospace-quality polymer
- High-tech shot peened, stress-relieved, and anodized finish for unmatched durability
- Clutch side knurling provides maximum grip adhesion
- Chemically applied cut lines and alignment grid are scratch- and peel-resistant
- Plastic bar end plugs keep the elements out and provide a strong base for grip ends
- Weighs only 2.1 lbs. (953 grams) without pad
- Handlebar pad included



For applications, see page 68

▼ MECHANISM



▼ CROSSBAR DETAIL





ABOUT

The EVO Handlebar is our flagship unbraced handlebar. Oversized-diameter handlebars without crossbars were invented and patented by ProTaper in 1991. Without sacrificing strength, this design yields increased flex and impact absorption over conventional handlebars, offering the rider improved comfort and reduced fatigue. Using a premium 7000 series aluminum alloy construction and computer-profiled four millimeter-thick wall design, the EVO Handlebar is up to 25% lighter and 45% stronger than competing handlebars.

FEATURES

- Used by top professional riders and race teams like Rockstar Energy Husqvarna Factory Racing, GEICO Honda, and Autotrader.com/Yoshimura Suzuki Factory Racing (JGR)
- Exclusive 4 mm-thick 7000 series aluminum alloy offers superior tensile and yield strengths
- Optimum balance between fatigue life, impact strength, and impact-absorbing flex
- High-tech shot peened, stress-relieved, and anodized finish for unmatched durability
- Independent lab tests show that the EVO Handlebar leads the market in fatigue life
- Epoxy inner coating resists corrosion
- Clutch side knurling provides maximum grip adhesion
- Chemically applied cut lines and alignment grid are scratch- and peel-resistant
- Plastic bar end plugs keep the elements out and provide a stronger base for grip ends
- Weighs only 1.4 lbs. (635 grams)
- Handlebar pad sold separately—see page 49

BLACK ▾



MAGNESIUM ▾



ABOUT

The Contour Handlebar is our most popular model. With its 2000 series aluminum alloy construction and computer-profiled five millimeter-thick wall design, it is up to 20% lighter and 40% stronger than competing handlebars. At only \$74.99, the Contour Handlebar is the most affordable way to equip your bike with the 1½" handlebar design that changed an industry.

FEATURES

- Exclusive 5 mm-thick 2000 series T6 aluminum alloy for superior tensile and yield strengths
- Best balance between fatigue life, impact strength, and impact-absorbing flex at price point
- High-tech shot peened, stress-relieved, and anodized finish for unmatched durability
- Clutch side knurling provides maximum grip adhesion
- Chemically applied cut lines and alignment grid are scratch- and peel-resistant
- Plastic end plugs keep the elements out and provide a stronger base for grip ends
- Weighs only 1.55 lbs. (703 grams) without pad
- Handlebar pad included

BLACK ▾



PLATINUM ▾



SILVER ▾



GOLD ▾



ORANGE ▾



BLUE ▾



EVO VS. CONTOUR

The EVO Handlebar is constructed from a premium 7000 series aluminum alloy and uses a 4 mm-thick wall design. The Contour Handlebar is constructed from a 2000 series aluminum alloy and uses a 5 mm-thick wall design. For added corrosion resistance, the EVO Handlebar also incorporates a special epoxy inner coating. Taken together, the metallurgic differences make the EVO a lighter handlebar with a more sensitive feel.

RED ▾



EVO ADVENTURE

ABOUT

Using the same manufacturing techniques and materials as our industry-changing 1 $\frac{1}{8}$ " motocross handlebar, the EVO Adventure is specifically designed to provide adventure/touring riders with the increased comfort and control they need. With over 8" of straight section in the control areas, mounting vital components is made easier than ever.

FEATURES

- Exclusive 4 mm-thick 7000 series aluminum alloy for superior tensile and yield strengths
- Optimum balance between fatigue life, impact strength, and impact-absorbing flex
- High-tech shot peened, stress-relieved, and anodized finish for unmatched durability
- Independent lab tests show that the EVO Handlebar leads the market in fatigue life
- Epoxy inner coating resists corrosion

RECOMMENDED FITMENT

- Adventure Bend: KTM, Triumph
- Adventure High Bend: BMW, Yamaha, Honda, Kawasaki, Suzuki

ADVENTURE ▾
02-4026



ADVENTURE HIGH ▾
02-4027



EVO DIRT TRACK

ABOUT

The EVO Dirt Track Handlebar offers the same advanced materials, manufacturing techniques, and technologies as its off-road counterpart, all in a bend perfect for dirt track racers.

FEATURES

- Exclusive 4 mm-thick 7000 series aluminum alloy for superior tensile and yield strengths
- Optimum balance between fatigue life, impact strength, and impact-absorbing flex
- High-tech shot peened, stress-relieved, and anodized finish for unmatched durability
- Weighs only 1.7 lbs. (771 grams)

02-5077



ABOUT

Our Seven Eighths (SE) Handlebar represents the state of the art in 7/8" handlebar design. Its 2000 series aluminum alloy construction and five millimeter-thick wall design, combined with its cold-forged crossbar and CNC machined clamps, make it perfect for riders who prefer solid, predictable feedback. SE Handlebars are available in bends to suit all bikes and riding styles, and come in five colors.

FEATURES

- Exclusive 5 mm-thick 2000 series T6 aluminum alloy for superior tensile and yield strengths
- Cold-forged aluminum crossbar
- CNC machined 6061 aluminum crossbar clamps adhered with aerospace-quality polymer
- High-tech shot peened, stress-relieved, and anodized finish for unmatched durability
- Clutch side knurling provides maximum grip adhesion
- Chemically applied cut lines and alignment grid are scratch- and peel-resistant
- Plastic end plugs keep the elements out and provide a stronger base for grip ends
- Weighs only 1.8 lbs. (816 grams) without pad
- Handlebar pad included

BLACK ▾



PLATINUM ▾



SILVER ▾



BLUE ▾



RED ▾





For applications, see page 70

HANDLEBARS > MICRO

ABOUT

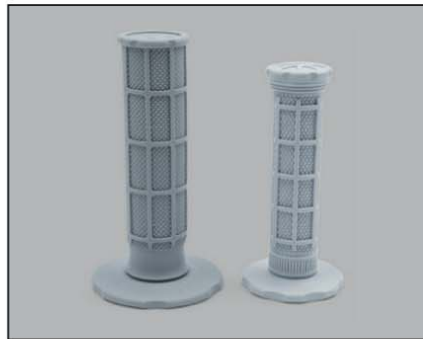
For decades, youth riders have had to make do with handlebars and grips designed for adults. ProTaper's revolutionary Micro Handlebar Kit makes that a thing of the past. By employing recent advances in manufacturing techniques, ProTaper has innovated a handlebar conversion kit that offers a reduced-diameter handgrip area, complete with a matching aluminum throttle tube and soft, 1/3 Waffle grips.

With the Micro Handlebar Kit, youth riders can more fully and comfortably grip their handlebars, leading to improved control and drastically reduced hand fatigue. The advanced, abrupt handlebar taper maintains a traditional 7/8" diameter everywhere else, allowing the use of stock handlebar mounts, lever controls, and switches. The Micro Handlebar Kit includes all parts necessary to complete the conversion, making it simple to directly install onto any 2-stroke minibike up to 85cc.

FEATURES

- Exclusive 2000 series T6 aluminum alloy handlebar construction
- Cold-forged aluminum crossbar
- CNC machined 6061 aluminum crossbar clamps adhered with aerospace-quality polymer
- High-tech shot peened, stress-relieved, and anodized handlebar finish for unmatched durability
- Clutch side handlebar knurling provides maximum grip adhesion
- Chemically applied handlebar graphics are scratch- and peel-resistant
- Included 1/3 Waffle Micro Grips are made using soft, synthetic rubber compound
- Includes 2-piece anodized, knurled T6 aluminum alloy Micro throttle tube with 7 optional cams
- Replacement parts available for individual purchase
- Handlebar pad included

▼ STANDARD VS. MICRO



▼ ABRUPT TAPER



KIT CONTENTS



1. Micro Handlebar
2. Snap ring installation tool
3. Micro Throttle Tube

4. Snap ring (secures throttle housing)
5. Set of 1/3 Waffle Micro Grips (Grey)
6. Seven interchangeable throttle cams

ABOUT

Constructed from a unique blend of proprietary alloys, the Tracker Handlebar brings motocross technology to the street. The computer-profiled four millimeter-thick wall design tapers from 1½" at the mounting position to 1" at the control area, accommodating most stock and custom control components.

FEATURES

- Specifically designed for American V-Twins
- Available in two bends: Outlaw and TT
- Stout 1½" clamp area tapers down to 1" at the controls (must be used with Big Bore Risers)
- 4 mm-thick wall tubing

RECOMMENDED FITMENT

- 3-Hole version designed for use with stock controls
- 1-Hole version ideal for custom control applications

OUTLAW BLACK ▼

3-Hole: 02-4990

1-Hole: 02-4992



OUTLAW SILVER ▼

3-Hole: 02-4991

1-Hole: 02-4993



TT BLACK ▼

3-Hole: 02-4994

1-Hole: 02-4996



TT SILVER ▼

3-Hole: 02-4995

1-Hole: 02-4997



For applications, see page 70

BIG BORE RISERS

FEATURES

- Available in Raw, Black, and Chrome finishes
- For use with Tracker Handlebars only
- Available in 2.5" and 4.5" rises (2.5" shown)
- Top clamps and hardware also included



RAW ▲

2.5": 40-6284

4.5": 40-6287



BLACK ▲

2.5": 40-6285

4.5": 40-6288



CHROME ▲

2.5": 40-6286

4.5": 40-6289

ABOUT

Owing to their full-sized features, ProTaper Seven Eighths (SE) Pit Bike Handlebars rank among the most widely used minibike handlebars on the market.

FEATURES

- Constructed from ProTaper AS20™ aerospace aluminum
- Chemically applied graphics are scratch- and peel-resistant
- Clutch side knurling provides maximum grip adhesion
- High-density foam bar pad included

XR50/CRF50 ▾



KLX110/DR-Z110 ▾



CRF50 KIT

FEATURES

02-2845

- 7" rise chromoly Mini Racer Handlebar
- Single Density Half Waffle grips
- Multi-position adjustable top triple clamp
- Throttle housing assembly and cable
- Kill switch, brake perch, lever, and cable
- Clamps/mounts also available separately



KLX110 KIT

FEATURES

02-2846

- 143mm rise SE Handlebar (KLX110 bend)
- Single Density Half Waffle grips
- Front brake cable (where applicable)
- Multi-position adjustable top triple clamp
- Clamps/mounts also available separately







GRIPS

ABOUT

Using the latest in grip technology and molding techniques, ProTaper's Clamp-On Grip System offers the comfort and control of traditional grips with the added advantage of quick, effortless installation. The design eliminates the need for glue and safety wire, yet ensures durable, slip-free performance.

Our super-slim clutch side *Windowed Core* not only minimizes the outer grip diameter, but also delivers critical relief areas for the palm and fingertips. The result is increased impact and vibration damping over competing solid-core designs, leading to significantly improved rider comfort and control.

The grip surface utilizes an extra-supple, tacky compound that is seamlessly molded to the inner core. This provides maximum comfort and traction and alleviates blistering. A firmer compound is used in the flange and endcap areas to resist crash damage and reduce wear.

FEATURES

- *Easy on, easy off—no messy glue or safety wire needed*
- *Dual Compound Technology for comfort and durability*
- *Exclusive clutch-side Windowed Core eliminates harsh feel of competing solid core designs*
- *Includes 7 interchangeable throttle cams for most 2- and 4-stroke motocross models*
- *Slim outer grip diameter to alleviate arm pump*
- *Low-profile CNC machined aluminum clamp*
- *Three traction patterns to choose from: Half Waffle, Pillow Top, and Full Diamond*

▼ EXCLUSIVE WINDOWED CORE



▼ ENDCAP DETAIL





◀ NEON PINK/BLACK
02-1655



◀ NEON BLUE/BLACK
02-1656



◀ NEON YELLOW/BLACK
02-1657



◀ NEON GREEN/BLACK
02-1658



◀ NEON PURPLE/BLACK
02-1659



◀ NEON RED/BLACK
02-1660



◀ NEON ORANGE/BLACK
02-1661



◀ RED/BLACK
02-1662



◀ BLUE/BLACK
02-1663



◀ YELLOW/BLACK
02-1664



◀ ORANGE/BLACK
02-1665



◀ GREY/BLACK
02-1666



◀ WHITE/BLACK
02-1667



◀ BLACK/BLACK
02-1668



◀ GREY/GREY
02-1669



◀ WHITE/WHITE
02-1670

For applications, see page 70

GRIPS > CLAMP-ON_GRIP_SYSTEM

CLAMP-ON GRIP SYSTEM—PILLOW TOP



◀ NEON PINK/GREY
02-1671



◀ NEON BLUE/GREY
02-1672



◀ NEON YELLOW/GREY
02-1673



◀ NEON GREEN/GREY
02-1674



◀ NEON PURPLE/GREY
02-1675



◀ NEON RED/GREY
02-1676



◀ NEON ORANGE/GREY
02-1677



◀ RED/GREY
02-1678



◀ BLUE/GREY
02-1679



◀ YELLOW/GREY
02-1680



◀ ORANGE/GREY
02-1681



◀ BLACK/GREY
02-1682



◀ WHITE/GREY
02-1683

For applications, see page 70

GRIPS > CLAMP-ON GRIP SYSTEM



◀ NEON PINK/DK GREY
02-1684



◀ NEON BLUE/DK GREY
02-1685



◀ NEON YELLOW/DK GREY
02-1686



◀ RED/DK GREY
02-1687



◀ BLUE/DK GREY
02-1688



◀ BLACK/DK GREY
02-1689



◀ WHITE/DK GREY
02-1690



◀ GREY/GREY
02-1691



◀ WHITE/WHITE
02-1692



◀ BLACK/BLACK
02-1693

For applications, see page 70

GRIPS > CLAMP-ON_GRIP_SYSTEM

SINGLE DENSITY

ABOUT

With Soft and Medium compounds available in three classic traction patterns, the Single Density Grip is the most versatile in our lineup.

FULL DIAMOND



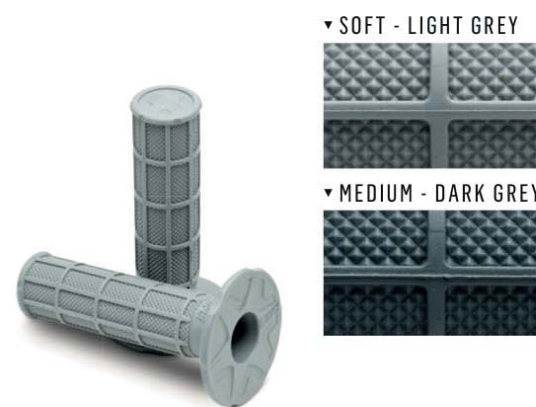
FEATURES

- Exclusive Soft and Medium Kraton rubber compounds for maximum durability and comfort
- Available in Full Diamond, Half Waffle, and Full Waffle traction patterns
- MX, ATV, and Trials flange styles

HALF WAFFLE



FULL WAFFLE



DUAL DENSITY

ABOUT

Our Dual Density Grip incorporates two dedicated synthetic rubber compounds. The tacky, gel-like surface compound provides the ultimate in traction and comfort, while the firm inner core ensures maximum durability.

FEATURES

- Constructed from both firm and soft Kraton rubber compounds
- Tacky outer layer provides excellent traction and comfort
- Shock-absorbing inner core perfects bonding interface with handlebars
- Available in Full Diamond and Half Waffle patterns with MX and ATV flange styles

MX FULL DIAMOND ▶
02-4800



ATV FULL DIAMOND ▶
02-4832



MX HALF WAFFLE ▶
02-4849



ATV HALF WAFFLE ▶
02-4850



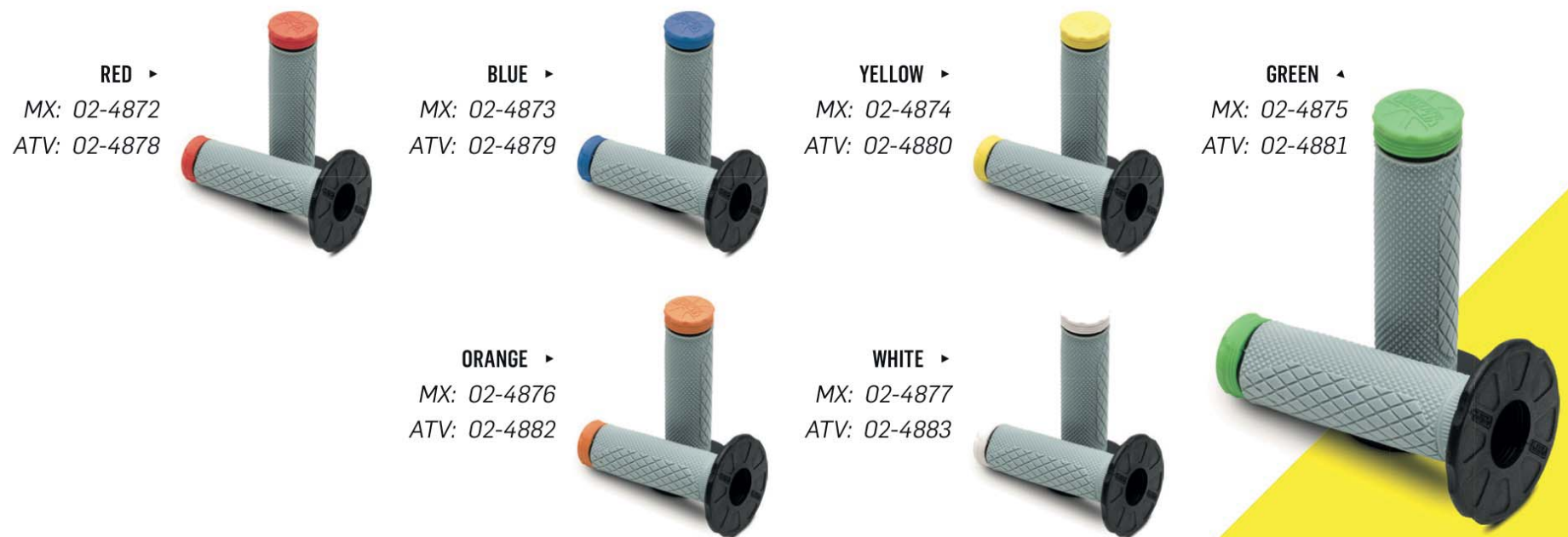
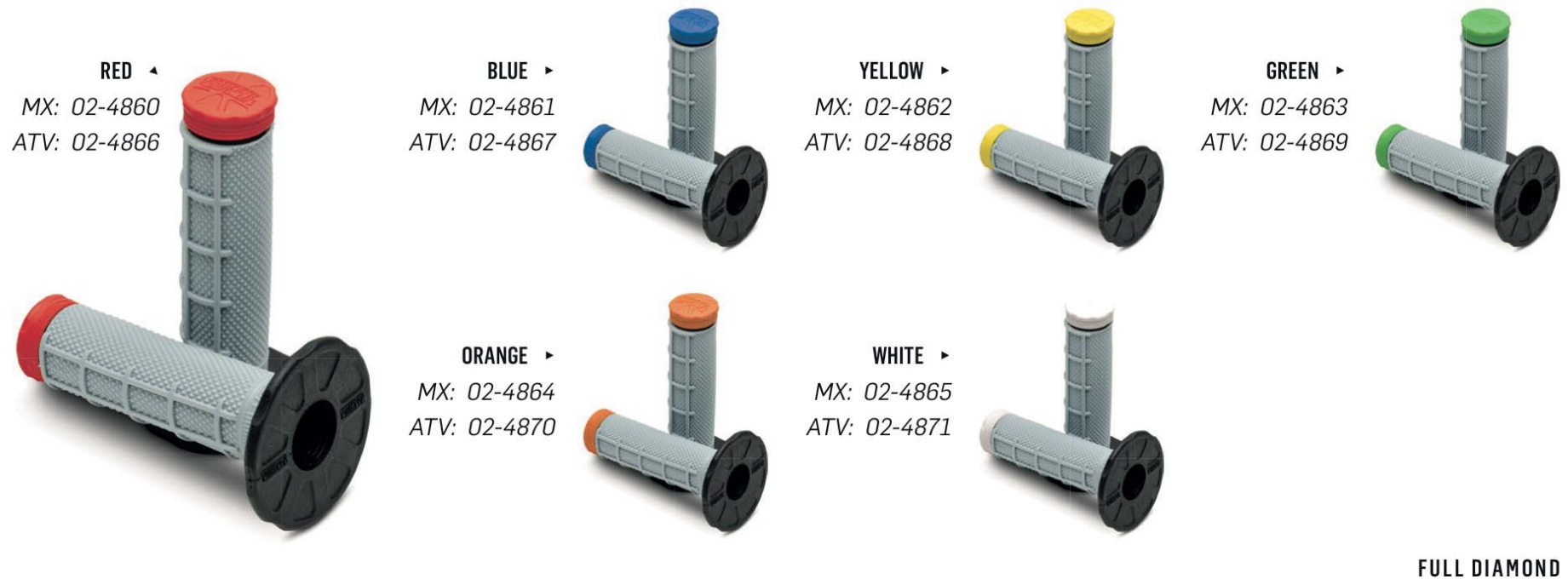
ABOUT

The Tri Density Grip features three different compounds to provide the ultimate in traction, comfort, and durability.

FEATURES

- Three different compounds provide the ultimate in traction, comfort, and durability
- Tacky, gel-like surface compound maximizes grip
- Inner core compound creates perfect bonding interface with handlebars
- Anti-Rip Tip uses high-durometer compound to extend the life of the grip
- Available in Full Diamond and Half Waffle patterns with MX and ATV flange styles

HALF WAFFLE



NEON GRIPS!

ABOUT

ProTaper Neon Grips feature our super soft, specially formulated synthetic rubber compound. Molded in seven vibrant colors with a racing-inspired half waffle grip pattern, Neon Grips blend style and function.

FEATURES

- Seven exciting, vibrant neon colors
- Half Waffle pattern improves grip and control
- Extra-supple, tacky compound maximizes comfort, dampens vibration



◀ BLUE
02-4038



◀ YELLOW
02-4039



◀ PINK
02-4040



◀ GREEN
02-4041



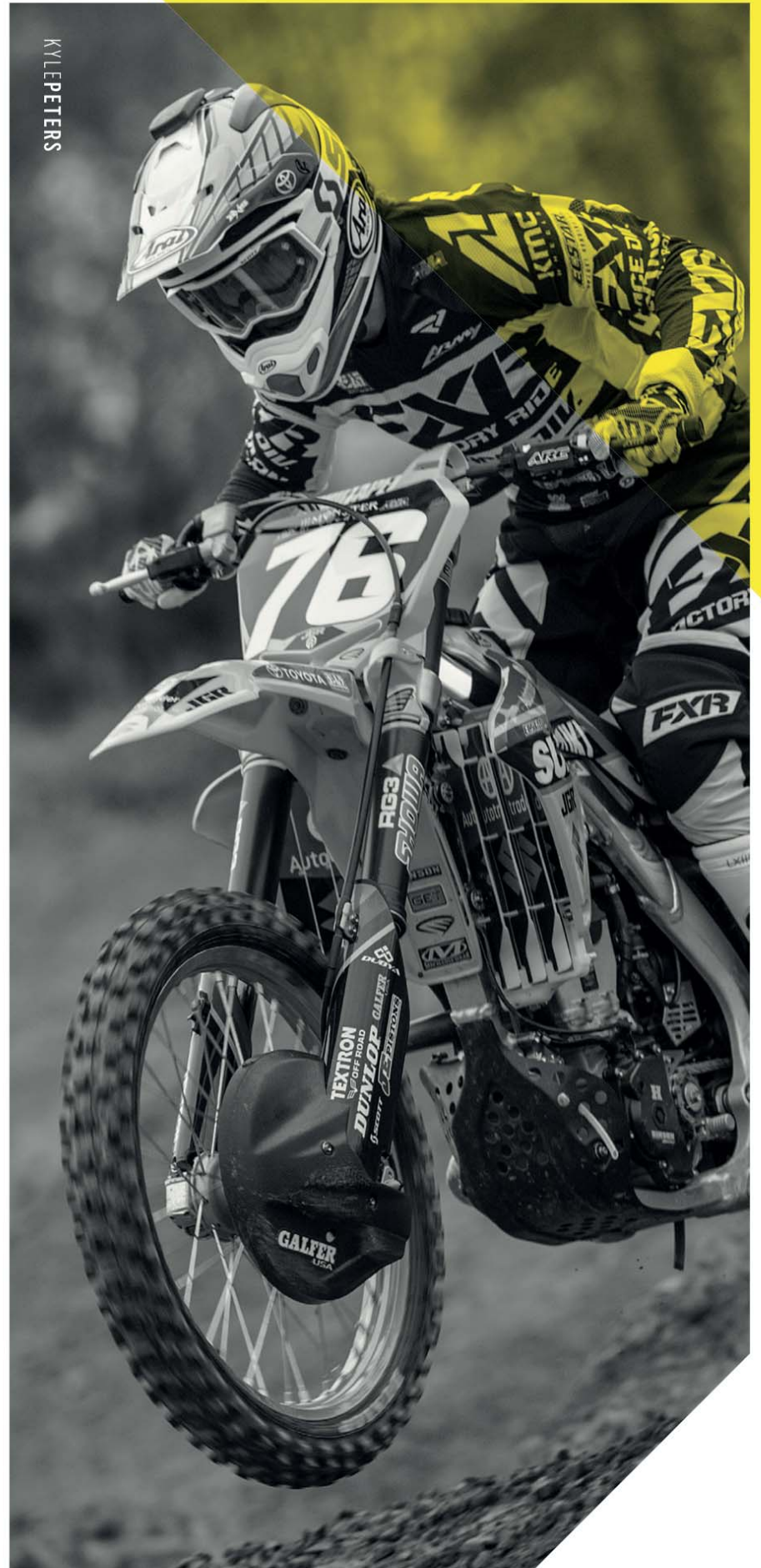
◀ ORANGE
02-4042



◀ RED
02-4043



◀ PURPLE
02-4044



ABOUT

The Pillow Top—our most popular off-road grip—utilizes an exclusive traction pattern and gel-like, vibration-reducing surface compound to maximize grip and comfort. The triple density construction not only creates the perfect bonding interface with the handlebars, but also extends the life of the grip.

FEATURES

- *Vibrasonix Pillow Top dramatically reduces vibration and cushions impact*
- *Tacky, gel-like surface compound maximizes grip*
- *Inner core compound creates perfect bonding interface with handlebars*
- *Anti-Rip Tip uses high-durometer compound to extend the life of the grip*
- *Designed to self-clean and shed mud away from outer surface*

MOTOCROSS

RED ▶
02-4851



BLUE ▶
02-4852



YELLOW ▶
02-4853



GREEN ▶
02-4854



ORANGE ▶
02-4855



BLACK ▶
02-4858



For applications, see page 71

ATV

WHITE ▶
02-4856



WHITE - FLANGED ▶
02-4857



BLACK ▶
02-4859



GRIPS > PILLOW_TOP

ABOUT

The Pillow Top Lite Grip features the same tacky, vibration-reducing compounds as the standard Pillow Top grip, but with a smaller outside diameter.

FEATURES

- Lower profile design than the standard Pillow Top
- Vibrasonix Pillow Top dramatically reduces vibration and cushions impact
- Tacky, gel-like surface compound maximizes grip
- Inner core compound creates perfect bonding interface with handlebars
- Anti-Rip Tip uses high-durometer compound to extend the life of the grip
- Designed to self-clean and shed mud away from outer surface

MOTOCROSS

RED ▶
02-4884



BLUE ▶
02-4885



YELLOW ▶
02-4886



GREEN ▶
02-4887



ORANGE ▶
02-4888



BLACK ▶
02-4891



ATV

WHITE ▶
02-4890



WHITE - FLANGED ▶
02-4889



BLACK ▶
02-4892



RACE CUT

ABOUT

ProTaper Race Cut Half Waffle Grips were designed and developed specifically for elite professional racers. With their Half Waffle pattern, extra-supple grip compound, and safety wire grooves, they help riders' hands endure the grind of a full pro season.

FEATURES

- Half Waffle pattern improves grip and control
- Extra-supple, tacky compound maximizes comfort, dampens vibration
- Signature mold design aids in safety wire installation

◀ WHITE
02-4034



◀ GREY
02-4035



◀ BLACK
02-4036



◀ GUM
02-4037



MICHAEL MOSIMAN

For applications, see page 71

GRIPS > RACE_CUT

1/3 WAFFLE

MX GRIPS

ABOUT

Our exclusive 1/3 Waffle Grip replicates what factory racers and mechanics have been hand-sculpting for years: half waffle grips with one row of the grid pattern removed. This design allows the palms to contact more grip surface area, balancing half waffle traction with full diamond feel.

FEATURES

- Optimized use of the traditional waffle/diamond pattern grip design
- Three evenly spaced safety wire grooves
- Our softest, tackiest synthetic rubber compound yet



◀ BLACK
02-4031



◀ WHITE
02-4029



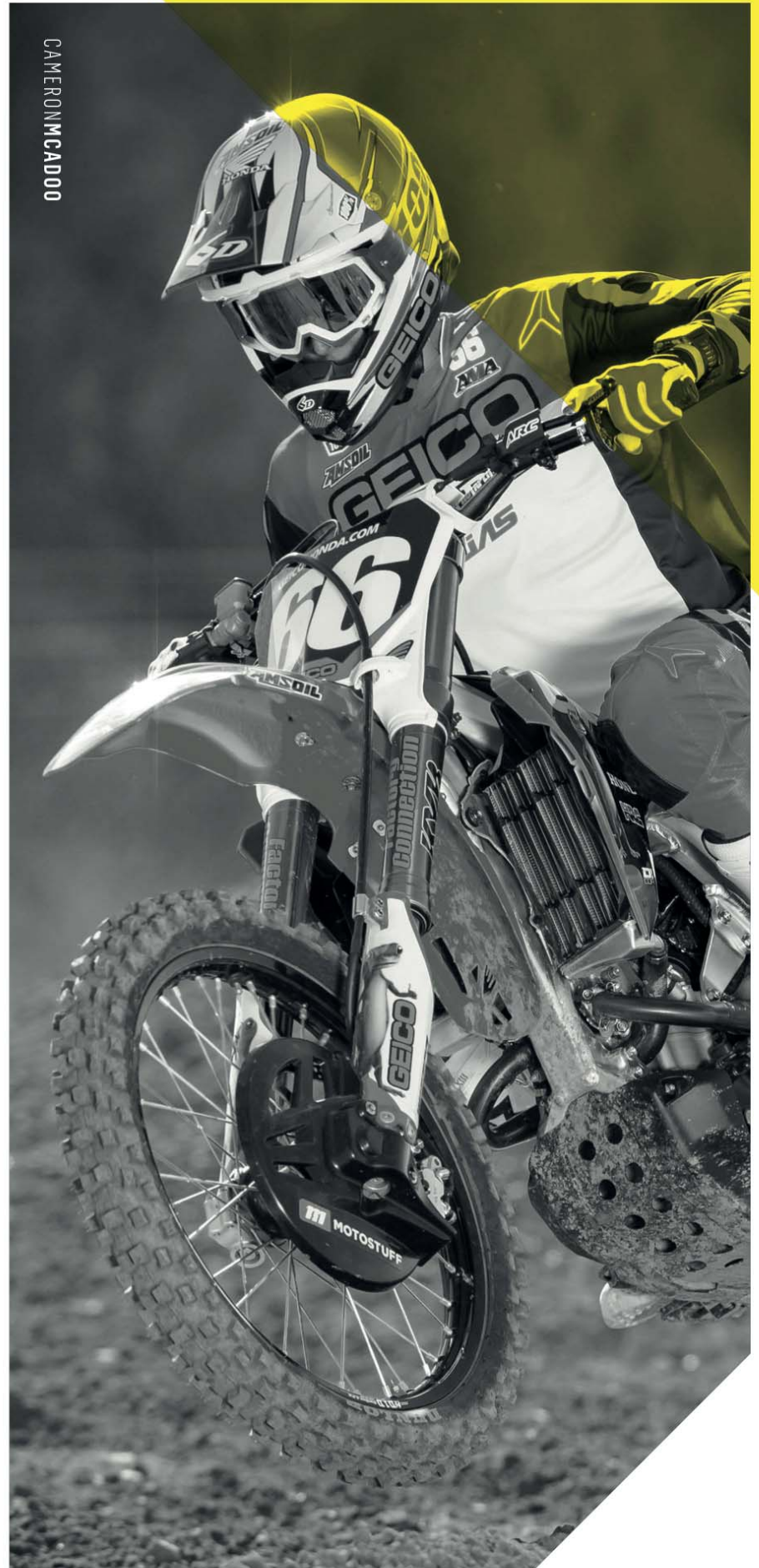
◀ GREY
02-4030



◀ GUM
02-4032



◀ ORANGE
02-4033



CAMERONMCADOO

ABOUT

Micro grips are purpose-built for the Micro Handlebar, our revolutionary control system for youth riders. The exclusive mold incorporates an oversized tip to resist crash damage and prevent smaller hands from slipping off.

FEATURES

- *Designed specifically for our Micro Handlebar*
- *Exclusive $\frac{1}{3}$ Waffle traction pattern*
- *Built-in safety wire grooves for added security*
- *Super-soft rubber compound to reduce vibration and preserve hands*
- *Oversized tips to resist crash damage and improve safety*



◀ **GREY**
02-5045



◀ **BLACK/YELLOW**
02-5067



◀ **BLACK/ORANGE**
02-5068



◀ **BLACK/GREY**
02-5069



◀ **NEON BLUE**
02-5070



◀ **NEON PINK**
02-5071

CONTROLS





ABOUT

The Profile Pro Clutch Perch builds on the extremely successful Profile Perch with our latest development: the XPS (Cross Pivot System) Lever. The XPS Lever pivots in multiple directions, yet maintains a slim, low-profile blade not found on competing folding lever designs. The assembly offers two lever reach adjustment points, making it highly tunable to your riding style.

FEATURES

- Universal application fits most off-road motorcycle makes and models
- Features ProTaper's exclusive XPS Lever and perch assembly
- 6061 T6 precision-forged aluminum
- Quick-adjust star inspired by factory race teams
- Two lever reach adjustment points provide 50mm of tunability
- Unique "full-coverage" rubber boot keeps pivot bearings and cable clean
- Also available with 4-stroke hot start assembly



▼ FORWARD FLEX



▼ LEVER REACH ADJUSTMENT



▼ UP/DOWN FLEX



ABOUT

The Profile Pro Brake Lever is the latest addition to the Profile control line. We've taken our successful XPS Clutch Lever and adapted it for OEM-quality fitment to the front brake master cylinder. With toolless reach adjustability and multi-directional folding capabilities, it is by far the most versatile front brake lever on the market.



FEATURES

- 6061 T6 precision-forged aluminum blade
- CNC machined lever clevis for a perfect fit
- Slim, low-profile Cross Pivot System is virtually unbendable
- Toolless lever reach adjustment dial offers 20mm of tunability
- Fitted rubber boot keeps XPS assembly debris-free
- Application-specific main rubber boot included
- Manufacturer's lifetime warranty against bending



ABOUT

With its low-profile aluminum construction and factory team-inspired quick-adjust star, the Profile Clutch Perch is one of the most technically advanced universal assemblies on the market. The addition of sealed bearings at the lever pivot virtually eliminates friction, providing a smooth, consistent lever feel.

FEATURES

- Universal application fits most off-road motorcycle makes and models
- "Full-coverage" rubber boot keeps assembly debris-free
- Sealed bearings at lever pivot virtually eliminate friction
- 6061 precision-forged aluminum with ultra-durable anodized finish
- Quick-adjust star inspired by factory race teams
- Also available with 4-stroke hot start assembly



BILLET

THROTTLE TUBE

ABOUT

The Billet Throttle Tube is a direct OEM replacement, but is constructed from premium-quality billet aluminum rather than cheap plastic. The Teflon™ inner coating dramatically reduces friction, while the surface knurling ensures a solid grip bond.

FEATURES

- Precision CNC machined billet aluminum construction
- Significantly stronger than stock plastic throttle tubes
- Teflon™ inner coating to reduce friction
- Knurled finish ensures solid grip bond



For applications, see page 73

CONTROLS > THROTTLE TUBES



MITCHELL HARRISON

ABOUT

Our Twister Throttle Tube is constructed from premium-quality anodized billet aluminum. The sealed radial ball bearing and polymer bushing provide smooth, consistent throttle twist action, while the surface knurling ensures a viselike grip bond. With the standard bearing insert, Twister Throttle Tubes are compatible with all ProTaper handlebars and $\frac{7}{8}$ " Renthal models.

FEATURES

- Precision CNC machined
- Sealed radial ball bearing and polymer bushing virtually eliminate friction
- Plastic end plug keeps debris out
- Knurled finish ensures solid grip bond
- Compatible with all ProTaper handlebars and Renthal $\frac{7}{8}$ " models (with standard bearing insert)
- Inserts for other handlebar brands and wrap-around handguards available separately (see below)



REPLACEMENT INSERTS

ABOUT

ProTaper Twister Throttle Tube replacement inserts tailor the fit for other handlebar brands and bark busters.

RENTHAL TWINWALL ▶
02-2888



◀ BARK BUSTER
02-2884

TAG/MOOSE ▶
02-2887

2.3 PLATFORMS

ABOUT

ProTaper's 2.3 Platforms footpegs feature a unique replaceable cleat design for unrivaled customization capabilities. All necessary mounting hardware is included, as are the standard magnesium-colored cleats. Replacement cleats incorporate ProTaper's exclusive Traction Arc Design and are available in various heights, colors, and materials to directly suit each rider's needs.

FEATURES

- Two-piece Platform System with three levels of adjustability
- Hard anodized 7000 series billet aluminum replaceable cleats
- Precision investment-cast stainless steel platform base
- Exclusive ProTaper Traction Arch cleat design
- Comes with standard cleat only (+5 mm and -5 mm sold separately)
- All hardware included

REPLACEMENT HARDWARE



REPLACEMENT CLEATS

FEATURES

- Exclusive Traction Arch Cleats
- 10 millimeters of adjustability allow unrivaled customization



▲ MAGNESIUM -5 MM 02-3205



▲ MAGNESIUM STD. 02-3206



▲ MAGNESIUM +5 MM 02-3207



▲ BLACK -5 MM 02-3213



▲ BLACK STD. 02-3214



▲ BLACK +5 MM 02-3215



▲ STEEL STD. 02-3217



CHASE SEXTON

ABOUT

ProTaper Race Spec (RS) Brake Pads are purpose-built to exceed the demands of modern off-road motorcycle racing. Designed and developed to outlast OEM components, RS Brake Pads deliver exceptional braking power, feel, and control in all conditions.

FEATURES

- True sintered compound perfect for motocross and off-road racing
- Outstanding stopping power and durability
- Exceptional brake feel and control
- Suitable for wet and dry conditions
- Made in Denmark for the highest quality and performance levels
- Meets ISO 9001:2000 standards



For applications, see pages 74-77



DRIVE



ABOUT

Race Spec (RS) Rear Sprockets are CNC machined to precise tolerances from high quality, heat treated 7075-T6 aluminum alloy. Painstakingly engineered, they achieve optimum load distribution, unsprung weight savings, and tooth endurance. The result is a durable, featherweight and feature-packed sprocket unequalled in the market.



▲ STANDARD (85cc+)



▲ MICRO (50-65cc)

FEATURES

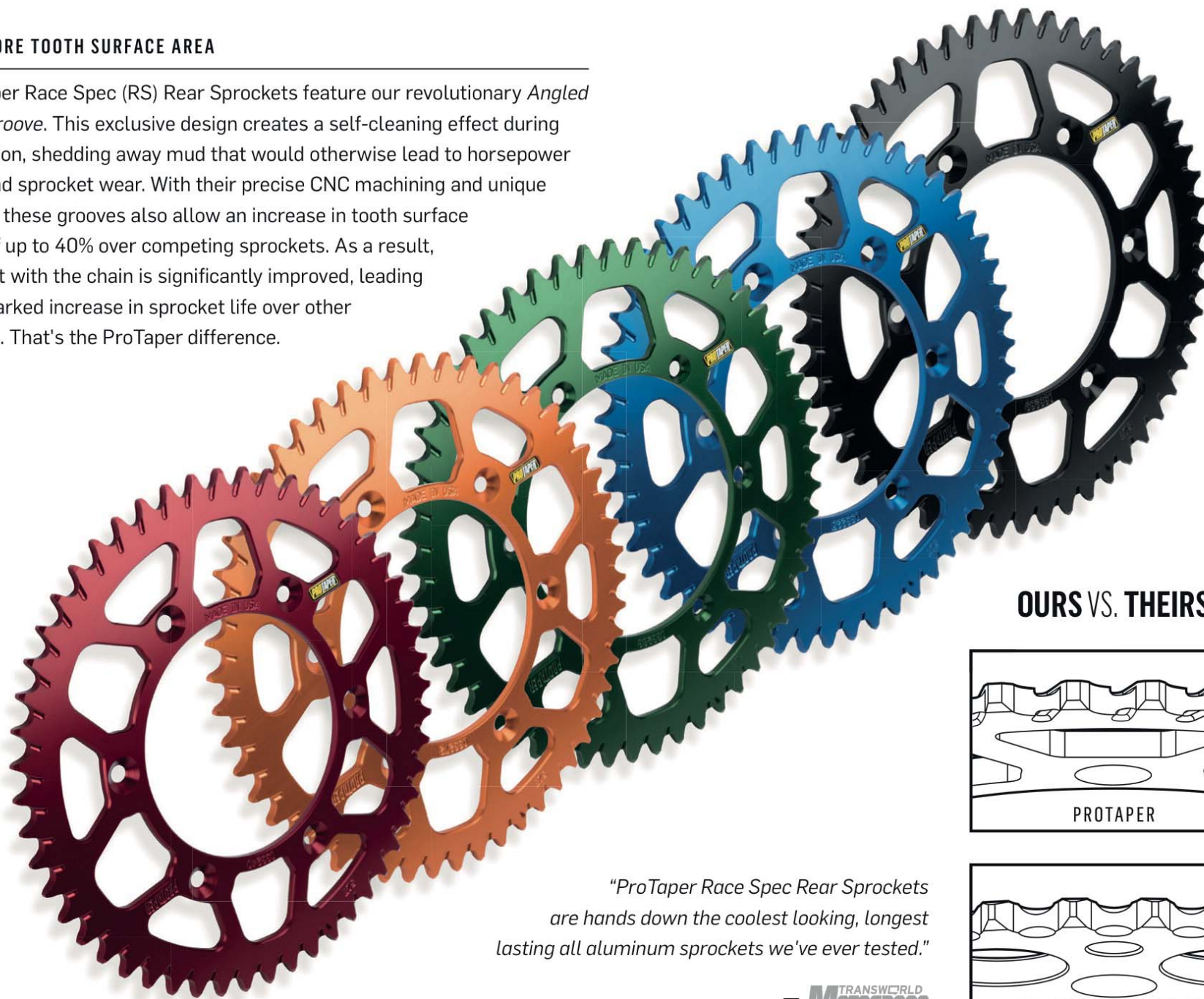
- Heat treated, precision CNC machined 7075-T6 billet aluminum construction for the ultimate in lightweight strength
- Exclusive Angled Mud Groove design allows sprocket to self-clean during operation, preventing dirt buildup that leads to horsepower loss and sprocket wear
- Deep penetrating anodized finish (hard anodizing on black sprockets) protects against corrosion, improves wear resistance
- Carefully engineered window pattern reduces unsprung rotating mass without compromising strength
- Machined edge chamfers eliminate sharp edges, reduce weight, and make for a cleaner appearance
- Countersinks automatically center sprocket to hub during installation—no hub center guide needed
- Machined inlay for subsurface sticker location
- Made in USA

THE **PERFECT BALANCE** OF
WEIGHT, STRENGTH, AND DURABILITY.

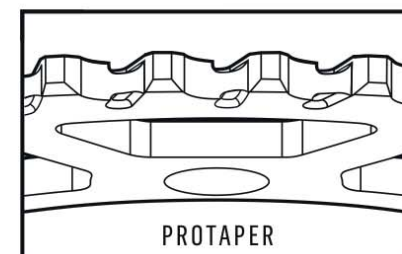


40% MORE TOOTH SURFACE AREA

ProTaper Race Spec (RS) Rear Sprockets feature our revolutionary *Angled Mud Groove*. This exclusive design creates a self-cleaning effect during operation, shedding away mud that would otherwise lead to horsepower loss and sprocket wear. With their precise CNC machining and unique layout, these grooves also allow an increase in tooth surface area of up to 40% over competing sprockets. As a result, contact with the chain is significantly improved, leading to a marked increase in sprocket life over other brands. That's the ProTaper difference.

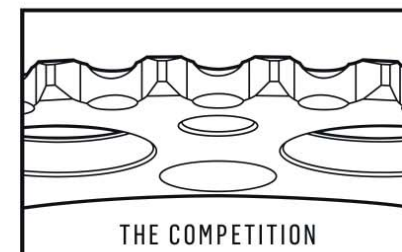


OURS VS. THEIRS



"ProTaper Race Spec Rear Sprockets are hands down the coolest looking, longest lasting all aluminum sprockets we've ever tested."

— **TRANSWORLD**
MOTOCROSS



UNIVERSAL BOLT KIT

FEATURES

02-3100

- Upgrade or replace damaged OEM fasteners
- Includes sprocket bolts, washers, & lock nuts



RS FRONT SPROCKETS *RACE SPEC*

ABOUT

Race Spec (RS) Front Sprockets are CNC machined and internally broached to precise tolerances from case-hardened, core-refined chromoly steel. Computer engineering ensures precise fitment, optimal weight savings, and perfect balance. The result is minimal chain drag, maximum horsepower, and uncompromising strength.

FEATURES

- *Core-refined 655M13 nickel-chrome-molybdenum alloy steel*
- *Internally broached and precision-machined to exact tolerances*
- *Lightening holes to reduce rotating weight*
- *Self-cleaning mud grooves to prevent dirt buildup*
- *Specially formulated coating to retain strength, aid in wear resistance*



CS4 ATV SPROCKETS *COMP SPEC*

ABOUT

Comp Spec ATV (CS4) Rear Sprockets are constructed from high-strength S460 steel for unmatched durability at an affordable price. With only a marginal increase in weight over an aluminum sprocket, the CS4 sprocket withstands the worst of abuse.

FEATURES

- *Revolutionary "Diamond-Cut" teeth are up to 25% harder than competitors'*
- *S460 steel has very high tensile and yield strengths*
- *Exclusive KTL coating for long-lasting finish*
- *Perfect for off-road and track riders looking for exceptional durability*





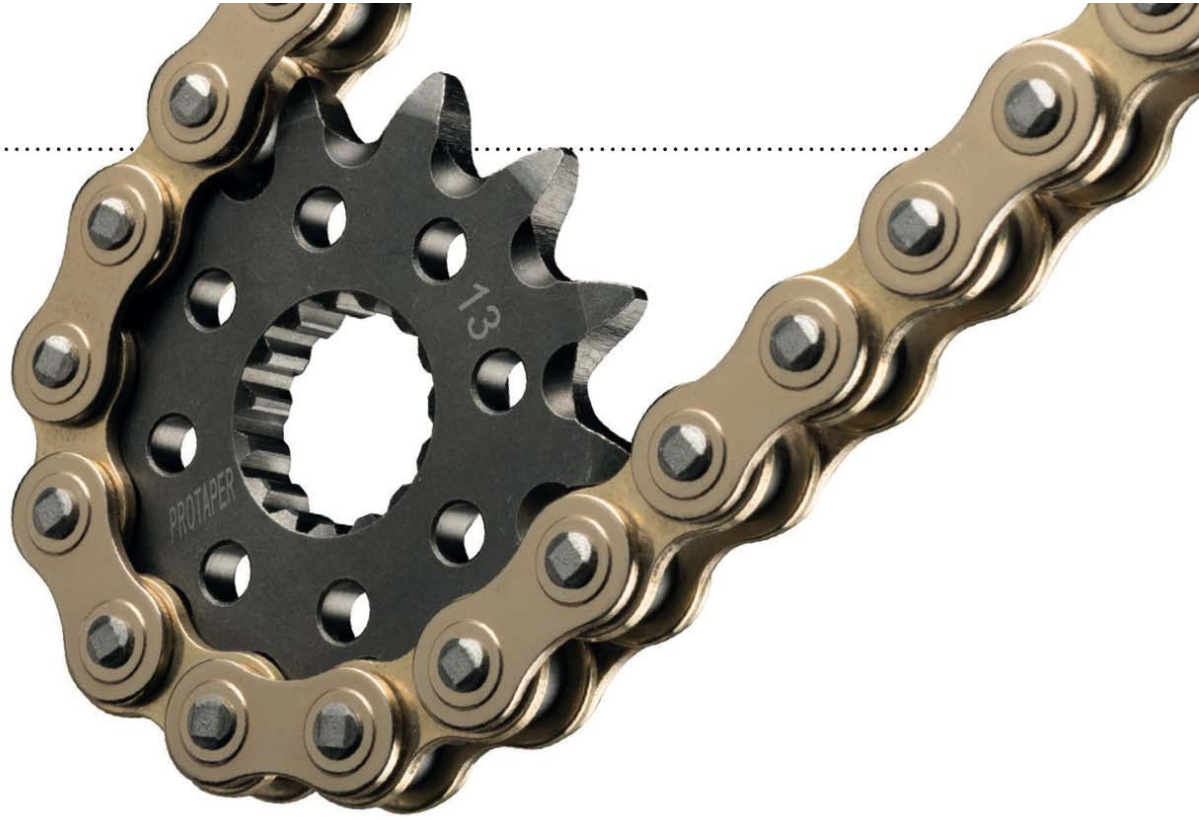
PROSERIES

FORGED RACING CHAIN

NEW!

ABOUT

Using a newly developed manufacturing technique never-before seen in the off-road market, ProTaper Pro Series chains seamlessly integrate innovative cold-forged pin collars into the outer chain plates. This exclusive design allows the outer chain plates to be slimmed, reducing weight, while maintaining an ultra-high tensile strength. The result is a premium, lightweight racing chain with peerless strength and durability.



520MX

FEATURES

02-1694

- 1 Slim outer plates with cold-forged pin collars for high tensile strength (8,440 lbs.) and increased durability
- 2 Chromium carbide layered pins for reduced friction and improved impact load absorption over conventional pin designs
- 3 Specially developed gold color surface coating reduces corrosion
- 4 Perfectly matched to ProTaper RS Sprockets for maximum power output and extended chain & sprocket life



520MX

O-RING

FEATURES

02-1696

- 1 Slim outer plates with cold-forged pin collars for high tensile strength (8,440 lbs.) and increased durability
- 2 Thermally refined alloy steel pins for added reinforcement and improved impact load absorption
- 3 Specially developed gold color surface coating reduces corrosion
- 4 Perfectly matched to ProTaper RS Sprockets for maximum power output and extended chain & sprocket life
- 5 Slim O-Ring Technology™ minimizes chain width, eliminating the clearance issues of competing O-ring chain designs





For applications, see page 88

DRIVE > CHAINS

GOLD SERIES CHAINS

ABOUT

Designed, tested, and produced to the highest standards, our Gold Series Chains are purpose-built for today's demanding 4-stroke motorcycles and ATVs. ProTaper chains are manufactured with lightweight, ultra high-strength chromoly steel alloy for added performance and durability.

FEATURES

- Premium Gold Series chains
- Lightweight, ultra high-strength chromoly construction
- Replacement master links available

PT415^{MX} **NEW!** 02-1698

- Designed for 50cc applications
- 4,945 lb. tensile strength

PT420^{MX} 02-3101

- Designed for 50–125cc (mini) applications
- 4,980 lb. tensile strength

PT428^{MX} 02-3103

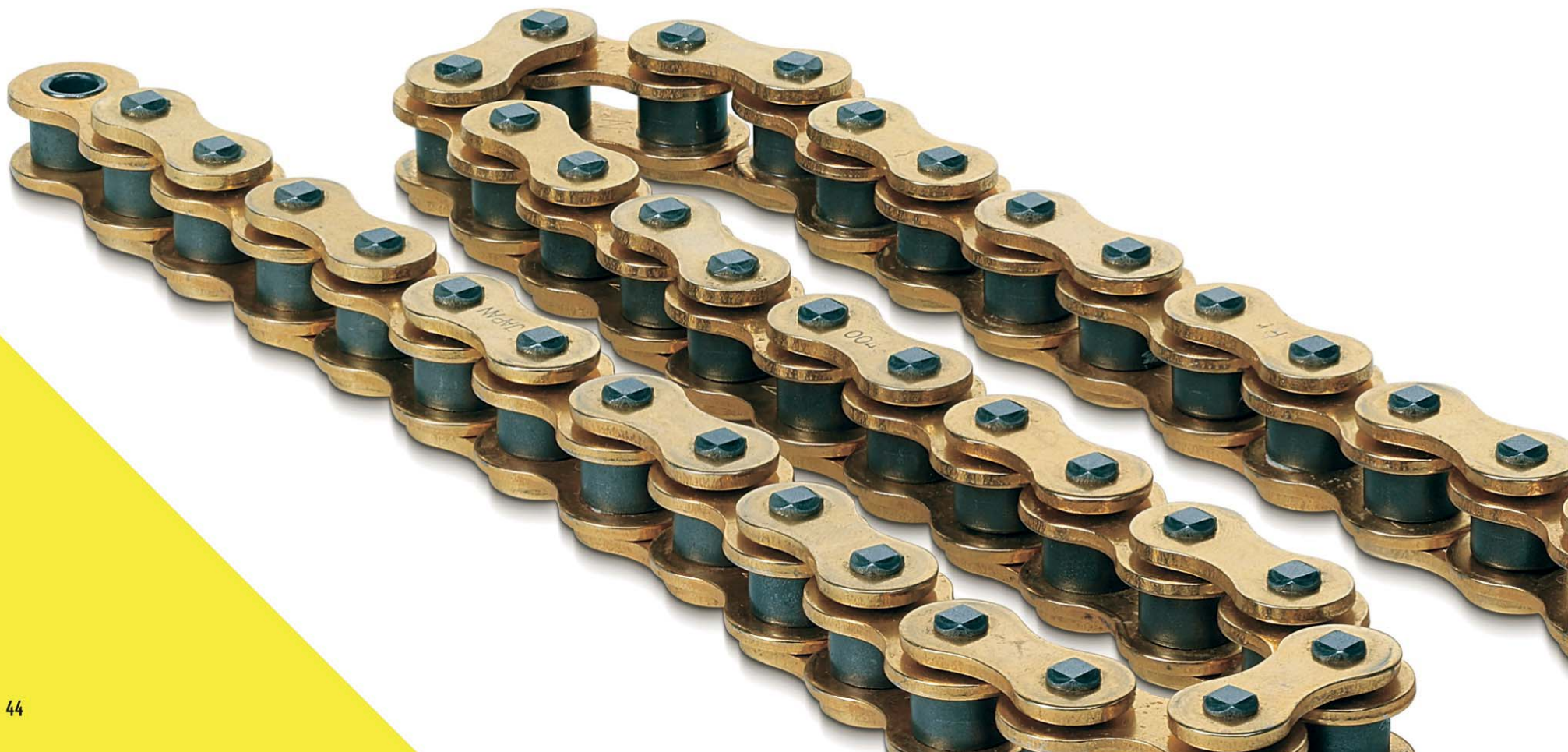
- Designed for 50–125cc (mini) applications
- 5,800 lb. tensile strength

PT520^{XRC} 02-3107

- Designed for 125–750cc applications
- 7,700 lb. tensile strength
- Proprietary XRC ring seal is proven to withstand extreme temperatures and conditions

PT520^{MX} 02-3105

- Designed for 125–450cc applications
- 8,000 lb. tensile strength





For applications, see page 88

DRIVE > CHAINS





ACCESSORIES

FUZION PADS NEW!

FEATURES

- Nine new colorways* for 2018
- Durable high-density closed-cell foam provides impact protection
- Molded for the Fuzion crossbar, but fits standard crossbars
- Flat bottom eliminates pad spin
- Tabs on pad and cover ensure perfect alignment every time

*Neon colors (Race Green/Pink, Hi-Viz) fade over time with exposure to sunlight



▲ RACE RED
02-1632



▲ RACE BLUE
02-1633



▲ RACE YELLOW
02-1634



▲ RACE ORANGE
02-1635



▲ RACE GREEN
02-1636



▲ RACE PINK
02-1637



▲ STEALTH
02-1638



▲ HI-VIZ
02-1639



▲ USA
02-1640



▲ BLACK/BLACK
02-8401



▲ RACE RED
8": 02-1648
10": 02-1641



▲ RACE BLUE
8": 02-1649
10": 02-1642



▲ RACE YELLOW
8": 02-1650
10": 02-1643



▲ RACE ORANGE
8": 02-1651
10": 02-1644



▲ RACE GREEN
8": 02-1652
10": 02-1645



▲ RACE PINK
8": 02-1653
10": 02-1646



▲ RACE WHITE
8": 02-1654
10": 02-1647



▲ BLACK
8": 02-8333
10": 02-8329



▲ BLUE
8": 02-8334
10": 02-8330



▲ RED
8": 02-8335
10": 02-8331



▲ WHITE
8": 02-8336
10": 02-8332

NEW! ROUND PADS

FEATURES

- Seven new colorways* for 2018
- Available in 8" and 10" widths

*Neon colors (Race Green/Pink) fade over time with exposure to sunlight

NEW!

2.0 SQUARE PADS

FEATURES

- Nine new colorways* for 2018
- Durable high-density closed-cell foam provides impact protection
- Fuel vent line cutout for steering stem access

*Neon colors (Race Green/Pink, Hi-Viz) fade over time with exposure to sunlight



▲ RACE RED
02-1624



▲ RACE BLUE
02-1625



▲ RACE YELLOW
02-1626



▲ RACE ORANGE
02-1627



▲ RACE GREEN
02-1628



▲ RACE PINK
02-1629



▲ STEALTH
02-1630



▲ HI-VIZ
02-1631



▲ USA
02-1764



▲ BLACK/BLACK
02-1765



▲ BLACK/WHITE
02-1766



▲ BLUE/WHITE
02-1767



▲ RED/BLACK
02-1768



▲ YELLOW/BLACK
02-1769

For applications, see page 88

ACCESSORIES > HANDLEBAR_PADS

BRUSH GUARDS

ABOUT

Shield your hands from brush, branches, and roost with ProTaper Brush Guards. Each kit includes everything you need to mount them on your bike and ride. Replacement shields are available in select colors.

FEATURES

- Injection molded, high-impact plastic
- Forged aluminum shield mount hardware
- Stainless steel bolts and aluminum washers
- Fits all oversized and 7/8" diameter bars
- Shields hands from roost



▲ WHITE
02-3119



▲ RED
02-3118



▲ ORANGE
02-3120



▲ YELLOW
02-3122



▲ GREEN
02-3121



▲ BLUE
02-3117



▲ BLACK
02-2881

SHIELD EXTENDERS

FEATURES

02-3123

- Injection molded, high-impact plastic
- Offers extended hand protection
- Mounts to the standard Brush Guard kit
- Mounting hardware included





JIMMYDECOTIS

UNIVERSAL SOLID MOUNTS

FEATURES

02-2821

- Adapts solid-mounted triple clamp handlebar mounts from $\frac{7}{8}$ " to $1\frac{1}{8}$ "
- Adds $\frac{3}{4}$ " rise to handlebars



UNIVERSAL RUBBER MOUNTS

FEATURES

02-2822

- Replaces OEM rubber handlebar mounts to accept $1\frac{1}{8}$ " handlebars
- Replacement bolts also available



For applications, see page 88

ACCESSORIES > HANDLEBAR_MOUNTS



GRIP GLUE



FEATURES

02-2882

- 10-25 second working time
- Grip is usable within 5 minutes
- 1 oz. bottle will bond up to 12 sets of grips
- Used by professional race teams worldwide
- Sold individually

GRIP DONUTS

FEATURES

02-4787

- Soft, comfortable neoprene construction
- Helps prevent blisters on the thumbs
- Sold in pairs



GRIP COVERS

FEATURES

02-4788

- Keeps grips clean during maintenance
- Protects grips from harmful chemicals
- Shields grips from ultraviolet rays
- Remove before riding
- Sold in pairs



For applications, see page 88

ACCESSORIES > GRIPS

SWIVEL CARABINER TIE-DOWNS

ABOUT

Our revolutionary tie-downs incorporate a spring-loaded swivel carabiner base hook, ensuring that your straps never get twisted or unhooked. Extra-wide straps offer unmatched strength and durability, while built-in soft-tie loops keep your handlebars scratch-free.

FEATURES

- *Patented ball bearing swivel joint (no more twisted straps)*
- *Spring-loaded carabiner safety hook*
- *Built-in soft-tie loops to protect handlebars*
- *2,500 lb. soft rubber-coated handlebar hooks*
- *Extra-wide 1.5" straps for added strength and durability (6' long including soft-tie)*

02-2819



WIRELESS HOUR METER

ABOUT

Monitor service intervals and eliminate guesswork with our Wireless Hour Meter. The simple, user-friendly design employs vibration-sensing technology to wirelessly track the life of your motorcycle. Installation is easy with our peel-and-stick mounting system, and for added security, zip-tie grooves are built-in.

FEATURES

- *Fully sealed housing to withstand the elements*
- *Simple and user-friendly design*
- *Wireless vibration-sensing technology*
- *Peel-and-stick installation*
- *Zip-tie grooves for added install security*
- *3-year initial battery life*

02-0685





ACCESSORIES



STICKERS

4.125"x1.5" (10 pack): 01-0083

12"x4" (2 pack): 01-0091

28"x9.5" (2 pack): 01-0092



BANNERS

Large 72"x29": 02-0009

Small 48"x19": 02-0020



HAYBALE COVER

02-0027



UMBRELLA

02-0031



PENNANTS

11"x17" (60 ft.): 02-0071



CANOPY TOP

10'x10': 02-4820



LANYARD

02-5218



KEY CHAIN

02-5219

DEALER DISPLAYS



SPROCKET COUNTER DISPLAY

02-2100



3D SLATWALL SIGN

8"x20"x1.5": 02-4821



GRIP DISPLAY

02-4824



BRAND IN A BOX WALL KIT

4'x8': 50-5696



SLATWALL ARMS

Accessory: 02-4823

Handlebar Box (set of 2): 02-4827

Handlebar Waterfall (set of 2): 02-4828



VERTICAL SLATWALL BANNERS

50-5672



PRODUCT DISPLAY

02-4829

For more display products and applications, see page 89

ACCESSORIES > DEALER_DISPLAYS

CASUAL





T-SHIRTS



BOLT

Black **BOLT**



Heavy Metal



BOLT

¾ Sleeve



STAMP

Black



STAMP

Heavy Metal



3D

Black



3D

Heavy Metal

For applications, see page 89

CASUAL T-SHIRTS

HOODIES & HATS



RACE SPEC JACKET



3D ZIP HOODIE

Black



3D ZIP HOODIE

Grey



CORP COVERT FITTED CAP

SM/MD: 01-3693

LG/XL: 01-3694



SQUAD MESH SNAPBACK

01-2778



WOOL CITY SNAPBACK

01-2779



BOLT SCRIPT SNAPBACK

01-2780

For applications, see page 89

CASUAL > HOODIES_ & HATS

PROTAPER
SPORT™



PROTAPER SPORT

.....! Introducing ProTaper Sport, the world's premier line of high quality, value-priced control components.

ALUMINUM HANDLEBARS

NEW!

FEATURES

- Aerospace-grade 6061-T6 aluminum
- Shot peened finish for increased durability
- 4.5 mm wall thickness for maximum strength
- 7/8" overall diameter

MID/HIGH - UNADILLA ▾

02-1142



MID/LOW - MILLVILLE ▾

02-1144



MINI ▾

02-1146



HIGH - WASHOUGAL ▾

02-1141



MID - REDBUD ▾

02-1143



LOW - SOUTHWICK ▾

02-1145



ATV ▾

02-1147



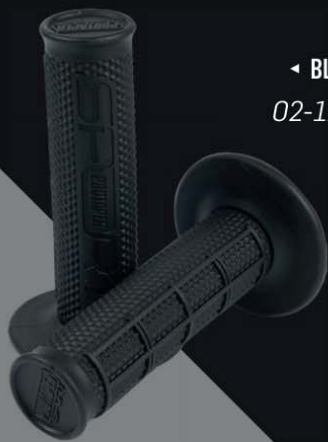
For applications, see page 90

HALF WAFFLE MX GRIPS

NEW!

◀ BLACK

02-1148



◀ GREY

02-1149



FEATURES

- Super soft, tacky rubber compound
- Classic Half Waffle design
- Three molded tie-wire grooves
- Available in Black and Grey colorways

PROTAPER_SPORT

ALUMINUM
SHIFT LEVERS

NEW!



FEATURES

- Forged 6061 aluminum construction
- Folding shift tip with knurled grip surface
- 45 SKUs covering most off-road models
- Precise OEM fitment and clocking

ADJUST ON THE FLY

CLUTCH PERCH & LEVER

NEW!

FEATURES

- Forged aluminum alloy construction
- Oversized "on-the-fly" style cable adjuster
- Sealed pivot bearing for smooth lever feel
- Rubber boot protects against dirt and debris
- Universal fit for most off-road models
- Standard and Hot Start versions
- Replacement lever available



STANDARD ▶
02-1138

◀ HOT START
02-1139

BAR MOUNT
CONES

NEW!

FEATURES

- Upgrade or replace damaged OEM cones
- Durable, high performance polyurethane
- Improved feel and durability over stock cones
- Maintains vibration-reducing properties



For applications, see pages 90-92

PROTAPER_SPORT

APPLICATIONS

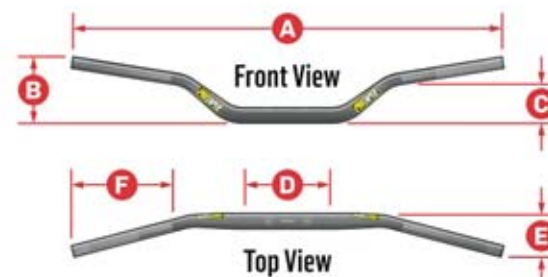




FUZION HANDLEBAR (1 1/8")

MX BEND	BLK	A	B	C	D	E	F
Carmichael	02-8958	800	73	36	195	55	210
Henry/Reed	02-8959	800	92	61	206	57	182
Windham/RM Mid	02-8960	800	99	70	219	53	180
CR High	02-8961	800	95	67	204	60	180
YZ High	02-8962	800	84	53	202	52	190
SX Race	02-8963	800	87	54.5	216	54	195

- A** Width
- B** Height
- C** Rise
- D** Clamp Area
- E** Sweep
- F** Control Area



All dimensions shown in mm (1" = 25.4 mm)

EVO HANDLEBAR (1 1/8")

MX BEND	BLK	MAG	A	B	C	D	E	F
Carmichael	02-4003	02-2891	800	77	40	195	55	180
Henry/Reed	02-4002	02-2890	800	92	66	206	57	180
Pastrana MX/RM Low	02-4007	02-2894	800	74	56	203	55	180
Windham/RM Mid	02-4004	02-2892	800	99	74	219	53	180
Factory Suzuki/KTM Stock	02-4009	02-2896	800	92	62	217	47	180
Woods High	02-4005	02-2895	800	97	69	211	65	180
CR High	02-4006	02-2893	800	95	71	204	60	180
YZ High	02-4008	02-2897	800	84	56	202	52	180
Steering Damper Low	02-4028	-	800	69	38	217	47	195
SX Race NEW!	02-0204	02-0205	800	87	54.5	216	54	195
Husqvarna Stock	02-0206	-	811	80	39.5	192	51	210
DIRT TRACK BEND	BLK	MAG	A	B	C	D	E	F
Dirt Track NEW!	02-5077	-	902	144	81	122	127	219
ADVENTURE BEND	BLK	MAG	A	B	C	D	E	F
Adventure	02-4026	-	804	123	90	109	81	200
Adventure High	02-4027	-	804	174	141	109	81	190

CONTOUR HANDLEBAR (1 1/8") (Continued on facing page)

MX BEND	BLK	PLT	SIL	GLD	ORG	BLU	RED	A	B	C	D	E	F
Carmichael	02-7909	02-7910	02-7911	02-7912	02-7993	02-7992	02-7991	800	77	40	195	55	180
Henry/Reed	02-7925	02-7926	02-7927	02-7928	02-7996	02-7995	02-7994	800	92	66	206	57	180
Pastrana MX/RM Low	02-7945	02-7946	02-7947	02-7948	-	-	-	800	74	56	203	55	180
Pastrana FMX	02-7941	02-7942	02-7943	02-7944	-	-	-	800	121	70	236	55	190
Windham/RM Mid	02-7953	02-7954	02-7955	02-7956	02-7987	02-7986	02-7985	800	99	74	219	53	180
Factory Suzuki/KTM Stock	02-7921	02-7922	02-7923	02-7924	-	-	-	800	92	62	217	47	180
Woods Low	02-7961	02-7962	02-7963	02-7964	-	-	-	800	71	66	211	60	195
Woods High	02-7957	02-7958	02-7959	02-7960	-	-	-	800	95	66	211	57	180
CR Mid	02-7917	02-7918	02-7919	02-7920	-	-	-	800	82	56	230	57	200
CR High	02-7913	02-7914	02-7915	02-7916	02-7990	02-7989	02-7988	800	95	67	204	60	200
KX High	02-7929	02-7930	02-7931	02-7932	-	-	-	800	108	70	236	56	180
YZ High	02-7965	02-7966	02-7967	02-7968	-	-	-	800	84	53	202	52	180
Universal Low	02-7949	02-7950	02-7951	02-7952	-	-	-	800	71	38	223	55	200

CONTOUR HANDLEBAR (1 1/8") (Continued from facing page)

MX BEND	BLK	PLT	SIL	GLD	ORG	BLU	RED	A	B	C	D	E	F
SX Race NEW!	02-0207	02-0208	02-0209	02-0210	02-0211	02-0212	02-0213	800	87	54.5	216	54	195
ATV BEND	BLK	PLT	SIL	GLD	ORG	BLU	RED	A	B	C	D	E	F
ATV Low	02-7969	02-7970	02-7971	02-7972	-	-	-	813	95	67	229	60	200
ATV Mid	02-7973	02-7974	02-7975	02-7976	-	-	-	813	108	70	236	56	200
ATV High	02-7977	02-7978	02-7979	02-7980	-	-	-	813	121	70	236	55	200
Raptor	02-7981	02-7982	02-7983	02-7984	-	-	-	813	143	115	236	87	200
MINI BEND	BLK	PLT	SIL	GLD	ORG	BLU	RED	A	B	C	D	E	F
Mini Low	02-7937	02-7938	02-7939	02-7940	-	-	-	775	80	53	216	50	200
Mini High	02-7933	02-7934	02-7935	02-7936	-	-	-	775	105	76	221	52	200

SE HANDLEBAR (7/8") (Continued on next page)

MX BEND	BLK	PLT	SIL	BLU	RED	A	B	C	D	E	F
Carmichael	02-5296	02-5297	02-5295	-	-	800	77	40	188	56	206
Henry/Reed	02-5242	02-5264	02-5220	02-5313	02-5312	800	92	60	225	57	186
Pastrana MX/RM Low	02-5249	02-5271	02-5227	-	-	800	74	54	228	55	189
Windham/RM Mid	02-5250	02-5272	02-5228	02-5315	02-5314	800	99	69	243	54	189
Factory Suzuki/KTM Stock	02-5251	02-5273	02-5229	-	-	800	92	61	233	47	190
CR Low	02-5243	02-5265	02-5221	-	-	800	71	55	231	68	195
CR Mid	02-5244	02-5266	02-5222	-	-	800	82	56	230	57	195
CR High	02-5245	02-5267	02-5223	02-5324	02-5323	800	95	67	233	60	186
KX Low	02-5247	02-5269	02-5225	-	-	800	71	54	231	60	195
KX High	02-5248	02-5270	02-5226	-	-	800	82	53	223	73	195
RM High	02-5252	02-5274	02-5230	-	-	800	82	53	223	73	195
YZ Low	02-5253	02-5275	02-5231	-	-	800	67	48	219	70	195
YZ High	02-5254	02-5276	02-5232	-	-	800	94	53	222	52	195
SX Race NEW!	02-0214	02-0215	02-0216	02-0217	02-0218	800	87	54.5	216	54	195
ATV BEND	BLK	PLT	SIL	BLU	RED	A	B	C	D	E	F
ATV Low	02-5255	02-5277	02-5233	-	-	813	140	88	228	84	206
ATV Mid	02-5256	02-5278	02-5234	-	-	813	150	93	237	76	206
ATV High	02-5257	02-5279	02-5235	-	-	813	160	104	236	100	199
Raptor	02-5293	02-5294	02-5292	-	-	770	143	115	161	87	206
TRIALS BEND	BLK	PLT	SIL	BLU	RED	A	B	C	D	E	F
Trials Mid	02-5307	-	02-5306	-	-	815	106	77	173	50	200
Trials High	02-5311	-	02-5308	-	-	815	113	84	173	49	206
MINI BEND	BLK	PLT	SIL	BLU	RED	A	B	C	D	E	F
Honda Mini	02-5258	02-5280	02-5236	-	-	730	117	89	166	50	195
Kawasaki Mini	02-5259	02-5281	02-5237	-	-	730	94	81	176	50	186
Suzuki Mini	02-5260	02-5282	02-5238	-	-	730	102	80	172	50	186
Yamaha Mini	02-5261	02-5283	02-5239	-	-	730	99	70	160	58	186
Schoolboy Low	02-5290	02-5291	02-5289	-	-	715	78	51	137	47	195
Schoolboy High	02-5287	02-5288	02-5286	-	-	715	88	61	144	45	195

SE HANDLEBAR (7/8") (Continued from last page)

MINI BEND	BLK	PLT	SIL	BLU	RED	A	B	C	D	E	F
Schoolboy Pro	02-5381	02-5382	02-5380	-	-	745	80	72	200	52	200
KTM50	02-5263	02-5285	02-5241	-	-	648	80	72	157	44	167
PIT BIKE BEND	BLK	PLT	SIL	BLU	RED	A	B	C	D	E	F
XR50/CRF50	02-5262	02-5284	02-5240	-	-	724	171	152	184	44	161
KLX110/DR-Z110	02-5302	02-5303	02-5301	-	-	800	143	123	184	44	200

MICRO HANDLEBAR KIT (7/8")

DESCRIPTION	PART#
Micro Handlebar Kit - Schoolboy Low	02-5034
Micro Handlebar Kit - Schoolboy Pro	02-5035
Micro Handlebar Kit - Schoolboy High	02-5036
Micro Handlebar Kit - Honda Mini	02-5037
Micro Handlebar Kit - KTM 50	02-5038
Micro Handlebar Kit - Cobra Jr. NEW!	02-5063
Micro Handlebar Kit - Cobra Sr. NEW!	02-5064

MICRO HANDLEBAR (7/8") (Handlebar only)

BEND	PART#	A	B	C	D	E	F
Schoolboy Low	02-5039	673	75	51	137	42	175
Schoolboy Pro	02-5040	699	79	72	145	46	174
Schoolboy High	02-5041	673	85	60	102	40	177
Honda Mini	02-5042	686	114	89	166	45	173
KTM 50	02-5043	648	80	72	157	44	169
Cobra Jr. NEW!	02-5065	664	84	55	146	45	157
Cobra Sr. NEW!	02-5066	712	88	55	146	52	181

MICRO HANDLEBAR KIT REPLACEMENT PARTS

DESCRIPTION	PART#
Micro Throttle Tube Kit	02-5044
Micro Handlebar Snap-Ring	02-5046

TRACKER HANDLEBAR (1½")

BEND	BLK	SIL	A	B	C	D	E	F
Outlaw 3-Hole	02-4990	02-4991	800	110	78	195	55	180
Outlaw 1-Hole	02-4992	02-4993	800	110	78	195	55	180
TT 3-Hole	02-4994	02-4995	800	135	104	195	87	180
TT 1-Hole	02-4996	02-4997	800	135	104	195	87	180

BIG BORE RISERS (1½")

COLOR	2.5" RISE	RETAIL	4.5" RISE
Raw	40-6284	\$118.95	40-6287
Black	40-6285	\$159.95	40-6288
Chrome	40-6286	\$159.95	40-6289

NEW! CLAMP-ON GRIP SYSTEM

½ WAFFLE	PART#	PILLOW TOP	PART#	FULL DIAMOND	PART#
Neon Pnk/Blk	02-1655	Neon Pnk/Gry	02-1671	Neon Pnk/Dk Gry	02-1684
Neon Blu/Blk	02-1656	Neon Blu/Gry	02-1672	Neon Blu/Dk Gry	02-1685
Neon Ylw/Blk	02-1657	Neon Ylw/Gry	02-1673	Neon Ylw/Dk Gry	02-1686
Neon Grn/Blk	02-1658	Neon Grn/Gry	02-1674	-	-
Neon Prpl/Blk	02-1659	Neon Prpl/Gry	02-1675	-	-
Neon Red/Blk	02-1660	Neon Red/Gry	02-1676	-	-
Neon Org/Blk	02-1661	Neon Org/Gry	02-1677	-	-
Red/Black	02-1662	Red/Grey	02-1678	Red/Dark Grey	02-1687
Blue/Black	02-1663	Blue/Grey	02-1679	Blue/Dark Grey	02-1688
Yellow/Black	02-1664	Yellow/Grey	02-1680	-	-
Orange/Black	02-1665	Orange/Grey	02-1681	-	-
Grey/Black	02-1666	Black/Grey	02-1682	Black/Dark Grey	02-1689
White/Black	02-1667	White/Grey	02-1683	White/Dark Grey	02-1690
Black/Black	02-1668	-	-	Black/Black	02-1693
Grey/Grey	02-1669	-	-	Grey/Grey	02-1691
White/White	02-1670	-	-	White/White	02-1692

PIT BIKE KITS & REPLACEMENT PARTS

PIT BIKE KITS	PART#
CRF/XR50 Kit (00-18)	02-2845
KLX110 Kit (02-18)	02-2846
CRF/XR50 KIT REPLACEMENT PARTS	PART#
CRF/XR50 Clamp	02-2843
CRF/XR50 Mini Racer Handlebar	02-1338
Brake Lever Assembly	07-5007
Brake Cable	06-1465
Throttle Cable	06-1466
Throttle Housing	06-1053
Carb Cap	06-1033
KLX110 KIT REPLACEMENT PARTS	PART#
KLX110 Clamp	02-2844

SINGLE DENSITY GRIPS

MX GRIPS	FULL DIAMOND	HALF WAFFLE	FULL WAFFLE
Soft - Lt Grey	02-4841	02-4833	02-4835
Med - Dk Grey	02-4843	02-4837	02-4839
Soft - Black	02-4845	02-4847	-
ATV GRIPS	FULL DIAMOND	HALF WAFFLE	FULL WAFFLE
Soft - Lt Grey	02-4842	02-4834	02-4836
Med - Dk Grey	02-4844	02-4838	02-4840
Soft - Black	02-4846	02-4848	-
TRIALS GRIPS	FULL DIAMOND	HALF WAFFLE	FULL WAFFLE
Soft - Black	02-4893	-	-

DUAL DENSITY GRIPS

MX GRIPS	FULL DIAMOND	HALF WAFFLE
Black/Grey	02-4800	02-4849
ATV GRIPS	FULL DIAMOND	HALF WAFFLE
Black/Grey	02-4832	02-4850

TRI DENSITY GRIPS

MX GRIPS	FULL DIAMOND	HALF WAFFLE
Red	02-4872	02-4860
Blue	02-4873	02-4861
Yellow	02-4874	02-4862
Green	02-4875	02-4863
Orange	02-4876	02-4864
White	02-4877	02-4865
ATV GRIPS	FULL DIAMOND	HALF WAFFLE
Red	02-4878	02-4866
Blue	02-4879	02-4867
Yellow	02-4880	02-4868
Green	02-4881	02-4869
Orange	02-4882	02-4870
White	02-4883	02-4871

NEON GRIPS

MX GRIPS	HALF WAFFLE
Blue	02-4038
Yellow	02-4039
Pink	02-4040
Green	02-4041
Orange	02-4042
Red	02-4043
Purple	02-4044

PILLOW TOP & PILLOW TOP LITE GRIPS

MX GRIPS	PILLOW TOP	PILLOW TOP LITE		
Red	02-4851	02-4884		
Blue	02-4852	02-4885		
Yellow	02-4853	02-4886		
Green	02-4854	02-4887		
Orange	02-4855	02-4888		
Black	02-4858	02-4891		
ATV GRIPS	STD.	FLANGE	STD.	FLANGE
White	02-4856	02-4857	02-4890	02-4889
Black	02-4859	-	02-4892	-

RACE CUT GRIPS

MX GRIPS	HALF WAFFLE
White	02-4034
Grey	02-4035
Black	02-4036
Gum	02-4037

1/3 WAFFLE GRIPS

MX GRIPS	1/3 WAFFLE
White	02-4029
Grey	02-4030
Black	02-4031
Gum	02-4032
Orange	02-4033

MICRO GRIPS

MX GRIPS	1/3 WAFFLE
Grey	02-5045
Black/Yellow	02-5067
Black/Orange	02-5068
Black/Grey	02-5069
Neon Blue	02-5070
Neon Pink	02-5071

PROFILE PRO CLUTCH PERCH (XPS)

DESCRIPTION	STD.	HOT START
Profile Pro Clutch Perch	02-4090	02-4091
REPLACEMENT PARTS	PART#	
XPS Replacement Lever	02-4092	
Parts Kit	02-4093	
Hot Start Assembly	02-4102	

PROFILE PRO BRAKE LEVER (XPS)

HONDA	YEAR	PART#
CR80R/RB	98-02	02-4095
CR85R/RB	03-07	
CR125R	92-07	
CRF150F	03-09, 12-18	
CRF150R/RB	07-09, 12-18	
CRF230F	03-09, 12-18	
CR250R	92-07	
CRF250R	04-06	
CRF250R	07-18	02-4094
CRF250X	04-09, 12-13, 15-18	02-4095
XR250R	96-04	
XR400R	96-04	
CRF450R	02-06	
CRF450R	07-18	02-4094
CRF450X	05-09, 12-18	02-4095
CR500R	96-01	
XR650R	00-07	
KAWASAKI	YEAR	PART#
KX65	00-18	02-4096
KX85	01-18	
KX100	01-18	
KX125	00-05	
KX250	00-07	
KX250F	04-12	
KX250F	13-18	02-4098
KLX450R	08-09	02-4096
KX450F	06-12	
KX450F	13-18	02-4098
KX500	2004	02-4096
KTM	YEAR	PART#
125 EXC/SX	09-13	02-4097
150 SX	09-13	
150 XC	10-13	
200 EXC/XC-W	10-13	
250 EXC/SX	09-13	
250 XC/XC-W	10-13	
250 EXC-F/SX-F	09-13	
250 XC-F	11-13	
250 XCF-W	10-13	
300 EXC	09-13	
300 XC/XC-W	10-13	

PROFILE PRO BRAKE LEVER (XPS) (Continued)

KTM	YEAR	PART#
350 SX-F	11-13	02-4097
350 XC-F	11-13	
350 EXC-F	12-13	
350 XCF-W	12-13	
400 EXC	10-11	
400 XC-W	2010	
450 EXC	09-13	
450 SX-F	09-13	
450 XC-W	10-13	
450 XC-F	2013	
500 EXC	12-13	
500 XC-W	12-13	
530 EXC	09-11	
530 XC-W	10-11	
SUZUKI	YEAR	PART#
RM85/L	02-18	02-4096
RM125	01-08	
RM250	01-08	
RM-Z250	04-18	
RM-Z450	05-18	
RMX450Z	10-11, 17-18	
YAMAHA	YEAR	PART#
YZ85	02-18	02-4096
YZ125	08-18	02-4098
YZ250	08-18	
YZ250F	08-18	
YZ250FX	15-18	
YZ250X	16-18	
WR250F	17-18	
YZ450F	08-18	
YZ450FX	16-18	
WR450F	16-18	

PROFILE CLUTCH PERCH

DESCRIPTION	STD.	HOT START
Profile Clutch Perch	02-4101	02-4100
REPLACEMENT PARTS	PART#	
Hot Start Assembly	02-4102	
Parts Kit	02-4103	
Lever - Black	02-4104	
Lever - Silver	02-4105	

TWISTER & BILLET THROTTLE TUBES *Cable cam not included

HONDA	TWISTER	BILLET
CR80R/85R (01-07)	-	02-2875
CRF150R/RB (07-18)	02-2858	02-2876
CR125R/250R (89-07)	02-2856	02-2874
CRF250R/X (04-18)	02-2861	02-2868
CRF450R/X (02-18)		
CR500R (89-01)	02-2856	02-2874
HUSQVARNA	TWISTER	BILLET
TC 85 (14-17)	02-2856	02-2874
TC 85 (2018)	02-5074	02-5076
TC/TE 125/250/300 (14-16)	02-2856	02-2874
TC/TE/TX 125/250/300 (17-18)	02-5074	02-5076
FC 250/350/450 (14-15)	02-2864	02-2871
FE 250/350/450/501 (14-16)		
FC 250/350/450 (16-18)	02-5073	02-5075
FE/FX 250/350/450/501 (17-18)		
KAWASAKI	TWISTER	BILLET
KX60 (85-03)	02-2862*	02-2869*
KX65 (00-18)		
KX80 (88-00)		
KX85 (01-18)		
KX100 (95-09, 11-18)		
KX125 (88-06)		
KX250 (88-07)		
KX250F (04-18)	02-2863	02-2870
KLX450R (08-09)		
KX450F (06-18)		
KTM	TWISTER	BILLET
85 SX (15-17)	02-2856	02-2874
85 SX (2018)	02-5074	02-5076
2-Stroke 125+ (96-16)	02-2856	02-2874
2-Stroke 125+ (17-18)	02-5074	02-5076
250-525 SX-F/XC-F (03-15)	02-2864	02-2871
250/450 SX-F FE (15.5-17.5)	02-5073	02-5075
250-525 EXC-F/XCF-W (03-16)	02-2864	02-2871
250/350/450 SX-F/XC-F (16-18)	02-5073	02-5075
250-500 EXC-F/XCF-W (17-18)		
SUZUKI	TWISTER	BILLET
RM60 (2003)	02-2862*	02-2869*
RM65 (03-05)		
RM80/L (86-01)		
RM85/L (02-18)		

TWISTER & BILLET THROTTLE TUBES (Continued)

SUZUKI	TWISTER	BILLET
RM100 (2003)	02-2862*	02-2869*
RM125 (89-07)		
RM250 (89-08)		
RM-Z250 (04-18)	02-2863	02-2870
RMX450Z (10-11, 17-18)		
RM-Z450 (05-18)		
YAMAHA	TWISTER	BILLET
YZ80 (83-01)	02-2865	02-2872
YZ85 (02-18)		
YZ125 (97-18)	02-2866	02-2873
YZ250 (97-18)		
YZ250F/WR250F (01-18)	02-2863	02-2870
YZ450F/426F/400F (98-18)		
WR450F/426F/400F (98-18)		

TWISTER THROTTLE TUBE INSERTS

DESCRIPTION	PART#
Barkbuster	02-2884
Tag/Moose	02-2887
Renthal Twinwall	02-2888

2.3 PLATFORMS & REPL. HARDWARE (Continued on next page)

GAS GAS	PEGS	HARDWARE
All Models (03-09)	02-3204	02-3212
HONDA	PEGS	HARDWARE
CR125R/250R (02-07)	02-3200	02-3209
CRF150R/RB (07-09, 12-18)		
CRF250R/X (04-18)		
CRF450R/RX/X (02-18)		
HUSQVARNA	PEGS	HARDWARE
TC 50/65 (17-18)	02-3216	02-3210
TC 85 (14-17)		
TC 85 (2018)	02-5072	02-3210
TC 125, FC 250/350/450 (14-15)	02-3201	02-3210
TC 125, FC 250/350/450 (16-18)	02-5072	02-3210
TC 250, TE/FE 125+ (14-16)	02-3201	02-3210
TC 250, TE/TX/FE/FX 125+ (17-18)	02-5072	02-3210
KAWASAKI	PEGS	HARDWARE
KX250 (05-07)	02-3208	02-3209
KX250F (05-18)		
KLX450R (08-09)		

2.3 PLATFORMS & REPL. HARDWARE (Continued from last page)

KAWASAKI	PEGS	HARDWARE
KX450F (06-18)	02-3208	02-3209
KTM	PEGS	HARDWARE
50 SX (14-18)	02-3216	02-3210
65 SX (98-18)		
85/105 SX (03-17)		
85 SX (2018)	02-5072	02-3210
125-150 SX, All SX-F/XC-F (98-15)	02-3201	02-3210
125-150 SX, All SX-F/XC-F (16-18)	02-5072	02-3210
250/450 SX-F FE (15.5-17.5)		
250-380 SX, All Off-Road (98-16)	02-3201	02-3210
250-380 SX, All Off-Road (17-18)	02-5072	02-3210
SUZUKI	PEGS	HARDWARE
RM-Z250 (05-06)	02-3208	02-3209
RM-Z250 (07-09)	02-3202	02-3212
RM-Z450 (05-07)		
RM-Z250 (10-18)	02-3203	02-3212
RM-Z450 (08-10, 12-18)		
RMX450Z (2010, 17-18)		
YAMAHA	PEGS	HARDWARE
YZ85 (02-18)	02-3204	02-3212
YZ125 (97-18)		
YZ250 (97-18)		
YZ250F/WR250F (01-18)		
YZ450F/426F/400F (98-18)		
WR450F/426F/400F (98-18)		

2.3 PLATFORMS REPLACEMENT CLEATS

DESCRIPTION	MAG	BLACK	STEEL
-5mm Cleats	02-3205	02-3213	-
Standard Cleats	02-3206	02-3214	02-3217
+5mm Cleats	02-3207	02-3215	-

RACE SPEC (RS) BRAKE PADS

HONDA	FRONT	REAR
CR80R (86-91)	02-8119	-
CR80R (92-95)	02-8119	02-8114
CR80R/RB (96-02)		
CR85R/RB (03-07)		
CR125R (87-94)	02-8133	02-8114
CR125R (95-01)	02-8116	02-8114
CR125R (02-07)	02-8116	02-8125

RACE SPEC (RS) BRAKE PADS (Continued)

HONDA	FRONT	REAR
CRF150F (03-18)	02-8116	-
CRF150R/RB (07-18)	02-8119	02-8125
CRF230F (03-18)	02-8116	-
CRF230L (08-18)	02-8116	02-8125
CR250R (87-94)	02-8133	02-8114
CR250R (95-01)	02-8116	02-8114
CR250R (02-07)	02-8116	02-8125
CRF250R (04-18)		
CRF250X (04-18)		
NX250 (88-90)	02-8116	-
XR250R (90-95)	02-8133	02-8114
XR250L (91-92)		
XR250R (96-04)	02-8116	02-8114
XR250L (93-96)		
XR400R (96-04)		
CRF450R (02-18)	02-8116	02-8125
CRF450RX (17-18)		
CRF450X (05-18)		
CR500R (87-94)	02-8133	02-8114
CR500R (95-01)	02-8116	02-8114
XR600R (91-92)	02-8133	02-8114
XR650L (93-18)	02-8116	02-8114
XR600R (93-00)		
XR650R (00-07)		
HUSQVARNA	FRONT	REAR
TC65 (17-18)	02-8126	02-8126
TC85 (14-18)	02-8134	02-8135
TC/TE/TX 125+ (14-18)	02-8115	02-8127
FC/FE/FX 250+ (14-18)		
KAWASAKI	FRONT	REAR
KX65 (00-17)	02-8124	02-8119
KX80 (88-96)	02-8136	02-8119
KX80 (97-00)	02-8123	02-8119
KX85 (01-18)		
KX100 (95-96)	02-8136	02-8119
KX100 (97-18)	02-8123	02-8119
KX125 (83-85)	02-8120	-
KX125 (1986)	02-8120	02-8120
KX125 (1994)	02-8116	02-8138
KX125 (95-05)	02-8116	02-8114
KLX140 (08-18)	02-8137	02-8119

RACE SPEC (RS) BRAKE PADS (Continued)

KAWASAKI	FRONT	REAR
KDX200 (86-88)	02-8120	-
KDX200 (89-92)	02-8120	02-8138
KDX200 (95-06)	02-8116	02-8138
KDX220R (97-06)		
KL250 (00-04)	02-8123	02-8120
KLR250 (85-06)	02-8120	-
KLX250R (94-96)	02-8116	02-8138
KLX250S (06-07)	02-8116	02-8114
KLX250S (09-12)	02-8137	02-8114
KX250 (83-85)	02-8120	-
KX250 (1986)	02-8120	02-8120
KX250 (87-88)	-	02-8120
KX250 (1994)	02-8116	02-8138
KX250 (95-07)	02-8116	02-8114
KX250F (04-18)	02-8116	02-8118
KLX300R (97-07)	02-8116	02-8114
KLX400R (03-04)		
KLX400SR (03-04)		
KLX450R (08-18)	02-8116	02-8118
KX450F (06-18)		
KX500 (83-85)	02-8120	-
KX500 (1986)	02-8120	02-8120
KX500 (87-88)	-	02-8120
KX500 (94-95)	02-8116	02-8138
KX500 (96-04)	02-8116	02-8114
KL600 (1984)	02-8120	-
KLR600 (85-86)		
KL650 Tengai (90-91)	02-8109	02-8120
KLE650 Versys (08-14), LH	02-8110	-
KLE650 Versys (08-14), RH	02-8106	02-8111
KLR650 (87-07)	-	02-8120
KLX650 C1-C4 (93-96)	02-8116	02-8138
KLX650R (93-95)		
KLX650R (1996)	02-8116	02-8114
KTM	FRONT	REAR
65 SX (02-03)	02-8126	02-8140
65 SX (04-08)	02-8126	02-8141
65 SX (09-18)	02-8126	02-8126
65 XC (08-09)		
85 SX (03-10)		
85 SX (2011)	02-8126	02-8135

RACE SPEC (RS) BRAKE PADS (Continued)

KTM	FRONT	REAR
85 SX (12-18)	02-8134	02-8135
85 XC (08-09)	02-8126	02-8126
105 SX (07-09)		
105 XC (08-09)		
125 EXC (1989), Brembo	02-8120	02-8120
125 EXC (90-91)		
125 EXC (92-93), Brembo	02-8115	02-8120
125 EXC (92-93), Grimeca	-	02-8120
125 EXC (94-03)	02-8115	02-8122
125 EXC (04-18)	02-8115	02-8127
125 EXE (2000)	02-8115	02-8122
125 LC2 (96-98)		
125 MX (89-91), Brembo	02-8120	02-8120
125 MX (92-93), Brembo	02-8115	02-8120
125 MX (92-93), Grimeca	-	02-8120
125 SM (2000)	02-8115	02-8122
125 Sting (97-99)	-	02-8122
125 SX (94-03)	02-8115	02-8122
125 SX (04-18)	02-8115	02-8127
144/150 SX (07-18)		
150 XC (10-15)		
150 XC-W (17-18)		
200 EXC (98-03)	02-8115	02-8122
200 EXC (04-16)	02-8115	02-8127
200 SX (2003)	02-8115	02-8122
200 SX (2004)	02-8115	02-8127
200 XC (06-10)		
200 XC-W (06-16)		
250 EXC (89, 91), Brembo	02-8120	02-8120
250 EXC (94-03)	02-8115	02-8122
250 EXC (04-18)	02-8115	02-8127
250 EXC-F (06-18)		
250 MX (89-91), Brembo	02-8120	02-8120
250 MX (92-93), Brembo	02-8115	02-8120
250 SX (94-02)	02-8115	02-8122
250 SX (03-18)	02-8115	02-8127
250 SX-F (05-18)		
250 XC (04-18)		
250 XC-F (06-18)		
250 XC-W (06-18)		
250 XCF-W (06-16)		

RACE SPEC (RS) BRAKE PADS (Continued)

KTM	FRONT	REAR
300 EGS (94-98)	02-8115	02-8122
300 EXC (94-03)		
300 EXC (04-18)	02-8115	02-8127
300 MXC (94-03)	02-8115	02-8122
300 MXC (04-06)	02-8115	02-8127
300 SX (94-96)	02-8115	02-8122
300 XC (06-18)	02-8115	02-8127
300 XC-W (06-18)		
350 EXC (89-91), Brembo	02-8120	02-8120
350 EXC LC4 (94-95)	02-8115	02-8122
350 EXC (96-97)		
350 EXC-F (12-18)	02-8115	02-8127
350 MX (89-91), Brembo	02-8120	02-8120
350 SX-F (11-18)	02-8115	02-8127
350 XC-F (11-18)		
350 XCF-W (12-16)		
360 SX (96-97)	02-8115	02-8122
380 EXC (98-03)		
380 SX (98-03)		
Duke 400 LC4 (94-98)	-	02-8122
400 EGS (96-02)	02-8115	02-8122
400 EXC (2007, 09-11)	02-8115	02-8127
400 EXC Racing (00-03)	02-8115	02-8122
400 EXC Racing (04-07)	02-8115	02-8127
400 LC4-E/SC (96-99)	02-8115	02-8122
400 SX Racing (00-02)		
400 XC-W (2007, 09-10)	02-8115	02-8127
440 EXC (94-95)	02-8115	02-8122
440 SX (1994)		
450 EXC (2007, 09-16)	02-8115	02-8127
450 EXC-F (17-18)		
450 EXC Racing (2003)	02-8115	02-8122
450 EXC Racing (04-07)	02-8115	02-8127
450 SMR (04-10, 12-14)	-	02-8127
450 SX Racing (03-05)	02-8115	02-8127
450 SX (2006)		
450 SX-F (07-18)		
450 XC (04-07)		
450 XC-F (08-18)		
450 XC-W (2007, 09-16)		
450 XCR-W (2008)		

RACE SPEC (RS) BRAKE PADS (Continued)

KTM	FRONT	REAR
500 EXC LC-4 (90-91), Brembo	02-8120	02-8120
500 EXC (12-16)	02-8115	02-8127
500 EXC-F (17-18)		
500 MX LC-4 (90-91), Brembo	02-8120	02-8120
500 MX (92-94)	02-8115	02-8120
500 MX (1995)	02-8115	02-8122
500 XC-W (12-16)	02-8115	02-8127
505 SX-F (07-08)		
505 XC-F (08-09)		
520 EXC Racing (00-02)	02-8115	02-8122
520 SX Racing (00-02)		
525 EXC Racing (2003)		
525 EXC Racing (04-07)	02-8115	02-8127
525 EXC (2007)		
525 MXC (2003)	02-8115	02-8122
525 MXC (04-05)	02-8115	02-8127
525 SX Racing (2003)	02-8115	02-8122
525 SX Racing (04-05)	02-8115	02-8127
525 SX (2006)		
525 SMR (04-05)	-	02-8127
525 XC (06-07)	02-8115	02-8127
525 XC-W (2007)		
530 EXC (09-11)		
530 EXC-R (2008)		
530 XC-W (09-10)		
530 XCR-W (2008)		
550 MXC (1996)	02-8115	02-8122
560 SMR (06-07)	-	02-8127
600 EXC/MX (90-91), Brembo	02-8120	02-8120
600 EXC (92-93)	02-8115	02-8120
620 Duke LC4 (94-98)	-	02-8122
620 EGS/EXC/SX (1994)	02-8115	02-8120
620 EGS/EXC/SX (1995)	02-8115	02-8122
620 EGS/LSE (96-99)		
620 SC (96-00)		
620 SC Supermoto (2000)		
620 SX (96-99)		
625 SC Supermoto (2002)		
625 SC (2002)		
625 SMC (05-06)	-	02-8122
625 SXC (03-07)	02-8115	02-8122

RACE SPEC (RS) BRAKE PADS (Continued)

KTM	FRONT	REAR
640 Adventure (00-05)	02-8115	02-8122
640 Duke (03-06)		02-8122
640 Duke II (01-02)		
640 LC4-E/SM (00-04)	02-8115	02-8122
640 SMC (05-06)		02-8122
660 SMC (03-06)		
690 Duke (08-11)	02-8117	02-8122
690 Duke R (10-11)		
690 Duke (12-18)	-	02-8122
690 Duke R (13-17)		
690 Enduro (08-18)		
690 Rally (07-08)		
690 SMC/R (08-17)	02-8117	02-8122
690 SMR (07-09)		
690 Supermoto (07-09)		
950 Supermoto (05-08)	-	02-8115
990 SM-T (2009), LH	02-8117	02-8115
990 SM-T (2009), RH		
990 SM (2009)		
990 SM-R (2009)	-	02-8115
990 Super Duke (05-12)	02-8117	02-8115
990 Super Duke R (08-13)		
1050 Adventure (15-16)		02-8115
1190 Adventure (13-16)		
SUZUKI	FRONT	REAR
RM65 (03-06)	02-8124	02-8119
RM85/L (05-17)	02-8123	02-8128
RM100 (2003)	02-8123	02-8119
DR125 (86-96)	02-8119	-
RM125 (96-08)	02-8116	02-8114
SP125 (86-88)	02-8119	
DR200 (86-90)		
DR200SE (96-13)		
SP200 (86-88)		
DR250F (1985)		
DR-Z250 (01-07)	02-8116	02-8142
RM250 (96-08)	02-8116	02-8114
RMX250 (96-98)	02-8116	02-8142
RMX250 (99-00)	02-8116	02-8114
RM-Z250 (04-18)	02-8116	02-8118
SP250F (1985)	02-8119	-

RACE SPEC (RS) BRAKE PADS (Continued)

SUZUKI	FRONT	REAR
DR350 (97-99)	02-8116	02-8142
DR-Z400 (00-04)	02-8116	02-8114
DR-Z400E (00-07)		
DR-Z400S (00-18)		
DR-Z400SM (05-18)		
RM-Z450 (05-18)	02-8116	02-8118
DL650 V-Strom (04-06), LH	02-8110	-
DL650 V-Strom (04-06), RH	02-8106	-
DL650 ABS (07-09), LH	02-8110	02-8105
DL650 ABS (07-09), RH	02-8105	
DR650 (96-17)	02-8116	02-8138
DL1000 (02-13), LH	02-8110	02-8105
DL1000 (02-13), RH	02-8106	-
YAMAHA	FRONT	REAR
YZ80 (86-92)	02-8121	-
YZ80 (93-01)	02-8121	02-8119
YZ85 (02-18)		
TT-R125 (00-18)	02-8121	-
YZ125 (98-02)	02-8116	02-8114
YZ125 (03-07)	02-8116	02-8118
YZ125 (08-18)	02-8129	02-8118
WR/YZ250F (01-02)	02-8116	02-8114
WR250F (03-18)	02-8116	02-8118
WR250R (08-18)		
WR250X (08-11)	02-8144	02-8118
YZ250 (98-02)	02-8116	02-8114
YZ250 (03-07)	02-8116	02-8118
YZ250 (08-18)	02-8129	02-8118
YZ250F (03-06)	02-8116	02-8118
YZ250F (07-18)	02-8129	02-8118
YZ250FX (16-18)		
YZ250X (16-18)		
WR/YZ400F (1998)	02-8116	02-8142
WR400F (99-00)	02-8116	02-8114
YZ400F (1999)		
WR426F (01-02)		
YZ426F (00-02)		
WR450F (03-15)	02-8116	02-8118
YZ450F (03-07)		
WR450F (16-18)	02-8129	02-8118
YZ450F (08-18)		

MX RACE SPEC (RS) SPROCKETS

HONDA	FRONT TEETH	PART#	REAR TEETH	PITCH	BLACK	RED
CRF50F/XR50R (00-18)	14T	03-3329	37T	420	03-3245	
	15T	03-3330				
CRF70F/XR70R (00-12)	14T	03-3329				
	15T	03-3330				
CR80R (86-02)	14T	03-3329	49T	420	03-3247	03-3246
CR80RB (96-02)	15T	03-3330	50T	420	03-3249	03-3248
CR85R (03-07)			51T	420	03-3250	-
CR85RB (03-07)			52T	420	03-3251	-
			53T	420	03-3252	-
			54T	420	03-3253	-
			55T	420	03-3255	03-3254
			56T	420	03-3257	03-3256
			57T	420	03-3258	-
CRF150F (05-09, 12-18)	13T	03-3359	45T	520	03-3228	-
CRF230F (05-09, 12-18)			46T	520	03-3229	-
			47T	520	03-3230	-
			48T	520	03-3231	03-3232
			49T	520	03-3233	03-3234
			50T	520	03-3235	03-3236
			51T	520	03-3237	03-3238
			52T	520	03-3239	03-3240
			53T	520	03-3241	03-3242
CRF150R (07-09, 12-18)	14T	03-3369	49T	420	03-3247	03-3246
CRF150RB (07-09, 12-18)	15T	03-3370	50T	420	03-3249	03-3248
			51T	420	03-3250	-
			52T	420	03-3251	-
			53T	420	03-3252	-
			54T	420	03-3253	-
			55T	420	03-3255	03-3254
			56T	420	03-3257	03-3256
			57T	420	03-3258	-
CR125R (87-03)	12T	03-3315	45T	520	03-3228	-
	13T	03-3316	46T	520	03-3229	-
			47T	520	03-3230	-
			48T	520	03-3231	03-3232
			49T	520	03-3233	03-3234
			50T	520	03-3235	03-3236
			51T	520	03-3237	03-3238
			52T	520	03-3239	03-3240
			53T	520	03-3241	03-3242

MX RACE SPEC (RS) SPROCKETS (Continued)

HONDA	FRONT TEETH	PART#	REAR TEETH	PITCH	BLACK	RED			
CR125R (04-07)	12T	03-3356	45T	520	03-3228	-			
CRF250R (04-17)	13T	03-3357	46T	520	03-3229	-			
CRF250X (04-09, 12-18)	14T	03-3358	47T	520	03-3230	-			
			48T	520	03-3231	03-3232			
			49T	520	03-3233	03-3234			
			50T	520	03-3235	03-3236			
			51T	520	03-3237	03-3238			
			52T	520	03-3239	03-3240			
			53T	520	03-3241	03-3242			
CRF250R (2018)	12T	03-0007	45T	520	03-3228	-			
			46T	520	03-3229	-			
			47T	520	03-3230	-			
			48T	520	03-3231	03-3232			
			49T	520	03-3233	03-3234			
			50T	520	03-3235	03-3236			
			51T	520	03-3237	03-3238			
CRF250L (13-17)	13T	03-3377	40T	520	03-3285	-			
			42T	520	03-3286	-			
			44T	520	03-3287	-			
			48T	520	03-3244	-			
			XR250R (88-95)	14T	03-3378	47T	520	03-3215	-
						48T	520	03-3216	-
						49T	520	03-3218	-
50T	520	03-3220				-			
51T	520	03-3222				-			
52T	520	03-3224				-			
CR250R (84-87) XR250R (96-05)	14T	03-3378	47T	520	03-3226	-			
			45T	520	03-3228	-			
			46T	520	03-3229	-			
			47T	520	03-3230	-			
			48T	520	03-3231	03-3232			
			49T	520	03-3233	03-3234			
			50T	520	03-3235	03-3236			
51T	520	03-3237	03-3238						
52T	520	03-3239	03-3240						
53T	520	03-3241	03-3242						

MX RACE SPEC (RS) SPROCKETS (Continued)

HONDA	FRONT TEETH	PART#	REAR TEETH	PITCH	BLACK	RED
CR250R (88-07)	13T	03-3305	45T	520	03-3228	-
CRF450R (02-18)	14T	03-3306	46T	520	03-3229	-
CRF450X (05-09, 12-18)	15T	03-3307	47T	520	03-3230	-
CRF450RX (17-18)			48T	520	03-3231	03-3232
CR500R (88-01)			49T	520	03-3233	03-3234
			50T	520	03-3235	03-3236
			51T	520	03-3237	03-3238
			52T	520	03-3239	03-3240
			53T	520	03-3241	03-3242
XR400R (96-04)	14T	03-3331	45T	520	03-3228	-
	15T	03-3332	46T	520	03-3229	-
	16T	03-3333	47T	520	03-3230	-
			48T	520	03-3231	03-3232
			49T	520	03-3233	03-3234
			50T	520	03-3235	03-3236
			51T	520	03-3237	03-3238
			52T	520	03-3239	03-3240
			53T	520	03-3241	03-3242
XR600R (91-00)	14T	03-3334	40T	520	03-3285	-
XR650L (93-09, 12-18)	15T	03-3335	42T	520	03-3286	-
			44T	520	03-3287	-
			48T	520	03-3244	-
XR650R (00-07)	14T	03-3336	45T	520	03-3228	-
	15T	03-3337	46T	520	03-3229	-
			47T	520	03-3230	-
			48T	520	03-3231	03-3232
			49T	520	03-3233	03-3234
			50T	520	03-3235	03-3236
			51T	520	03-3237	03-3238
			52T	520	03-3239	03-3240
			53T	520	03-3241	03-3242
HUSQVARNA	FRONT TEETH	PART#	REAR TEETH	PITCH	BLACK	ORANGE
TC 50 (17-18)	10T	03-3371	36T	420	03-3288	03-3393
	11T	03-3372	38T	420	03-3289	03-3394
	12T	03-3373	40T	420	03-3290	03-3395
TC 65 (17-18)	13T	03-3347	46T	420	03-3263	03-3396
	14T	03-3348	47T	420	03-3264	03-3397
			48T	420	03-3265	03-3398
			49T	420	03-3266	03-3399
			50T	420	03-3267	03-3400

MX RACE SPEC (RS) SPROCKETS (Continued)

HUSQVARNA	FRONT TEETH	PART#	REAR TEETH	PITCH	BLACK	ORANGE
TC 85 (14-18)	13T	03-3423	46T	428	03-3278	03-3401
	14T	03-3304	47T	428	03-3279	03-3402
			48T	428	03-3280	03-3403
			49T	428	03-3281	03-3404
			50T	428	03-3282	03-3405
TC 125/250 (14-18)	12T	03-3406	47T	520	03-3294	
TE 125/150/250/300 (14-18)	13T	03-3342	48T	520	03-3291	03-3268
TX 125/300 (17-18)	14T	03-3343	49T	520	03-3295	03-3269
FC 250/350/450 (14-18)	15T	03-3344	50T	520	03-3296	03-3270
FE 250/350/450/501 (14-18)			51T	520	03-3297	03-3271
FX 350/450 (17-18)			52T	520	03-3292	03-3272
			53T	520	03-3293	03-3273
			54T	520	03-3243	
KAWASAKI	FRONT TEETH	PART#	REAR TEETH	PITCH	BLACK	GREEN
KX60 (85-03)	12T	03-3322				
	13T	03-3323				
	14T	03-3324				
KX65 (00-18)	12T	03-3322	46T	420	03-3274	-
	13T	03-3323	47T	420	03-3275	-
	14T	03-3324	48T	420	03-3276	-
			49T	420	03-3277	-
KX80 (88-00)	12T	03-3322	49T	420	03-3259	-
KX85 (01-18)	13T	03-3323	50T	420	03-3260	03-3180
KX100 (95-18)	14T	03-3324	51T	420	03-3261	03-3181
			52T	420	03-3262	-
KLX110/L (03-18)	14T	03-3352				
	15T	03-3353				
KLX140/L/G (08-18)	13T	03-3325				
	14T	03-3326				
KX125 (85-91)			47T	520	03-3188	-
KLX650/R (93-96)			48T	520	03-3189	03-3176
			49T	520	03-3190	03-3177
			50T	520	03-3191	03-3178
			51T	520	03-3192	03-3179
			52T	520	03-3193	03-3283
			53T	520	03-3194	03-3284
KX125 (92-05) (Continued on next page)	12T	03-3350	47T	520	03-3188	-
	13T	03-3351	48T	520	03-3189	03-3176
			49T	520	03-3190	03-3177
			50T	520	03-3191	03-3178
			51T	520	03-3192	03-3179

MX RACE SPEC (RS) SPROCKETS (Continued)

KAWASAKI	FRONT TEETH	PART#	REAR TEETH	PITCH	BLACK	GREEN
KX125 (92-05)			52T	520	03-3193	03-3283
(Continued from last page)			53T	520	03-3194	03-3284
KDX200 (84-06)	12T	03-3300	47T	520	03-3188	-
KDX220R (97-05)	13T	03-3301	48T	520	03-3189	03-3176
KDX250 (91-94)	14T	03-3302	49T	520	03-3190	03-3177
KLX250R (94-96)	15T	03-3303	50T	520	03-3191	03-3178
KX250 (87-98)			51T	520	03-3192	03-3179
KLX300R (97-02)			52T	520	03-3193	03-3283
KX500 (87-04)			53T	520	03-3194	03-3284
KLX250S (06-14)	14T	03-3360	47T	520	03-3188	-
			48T	520	03-3189	03-3176
			49T	520	03-3190	03-3177
			50T	520	03-3191	03-3178
			51T	520	03-3192	03-3179
			52T	520	03-3193	03-3283
			53T	520	03-3194	03-3284
KX250 (99-07)	12T	03-3338	47T	520	03-3188	-
KLX300R (03-07)	13T	03-3339	48T	520	03-3189	03-3176
	14T	03-3340	49T	520	03-3190	03-3177
	15T	03-3341	50T	520	03-3191	03-3178
			51T	520	03-3192	03-3179
			52T	520	03-3193	03-3283
			53T	520	03-3194	03-3284
KX250F (04-05)	13T	03-3354	47T	520	03-3188	-
	14T	03-3355	48T	520	03-3189	03-3176
			49T	520	03-3190	03-3177
			50T	520	03-3191	03-3178
			51T	520	03-3192	03-3179
			52T	520	03-3193	03-3283
			53T	520	03-3194	03-3284
KX250F (06-18)	12T	03-3366	47T	520	03-3188	-
	13T	03-3367	48T	520	03-3189	03-3176
	14T	03-3368	49T	520	03-3190	03-3177
			50T	520	03-3191	03-3178
			51T	520	03-3192	03-3179
			52T	520	03-3193	03-3283
			53T	520	03-3194	03-3284
KLX450R (08-09)	13T	03-3364	47T	520	03-3188	-
KX450F (06-18)	14T	03-3365	48T	520	03-3189	03-3176
(Continued on facing page)			49T	520	03-3190	03-3177
			50T	520	03-3191	03-3178

MX RACE SPEC (RS) SPROCKETS (Continued)

KAWASAKI	FRONT TEETH	PART#	REAR TEETH	PITCH	BLACK	GREEN
KLX450R (08-09)			51T	520	03-3192	03-3179
KX450F (06-18)			52T	520	03-3193	03-3283
(Continued from facing page)			53T	520	03-3194	03-3284
KTM	FRONT TEETH	PART#	REAR TEETH	PITCH	BLACK	ORANGE
50 SX (09-13)	10T	03-3371	38T	415	03-3388	03-3182
	11T	03-3372	39T	415	03-3389	03-3183
	12T	03-3373	40T	415	03-3390	03-3184
			41T	415	03-3391	03-3185
			42T	415	03-3392	03-3186
50 SX (14-18)	10T	03-3371	36T	420	03-3288	03-3393
	11T	03-3372	38T	420	03-3289	03-3394
	12T	03-3373	40T	420	03-3290	03-3395
65 SX (98-18)	13T	03-3347	46T	420	03-3263	03-3396
	14T	03-3348	47T	420	03-3264	03-3397
			48T	420	03-3265	03-3398
			49T	420	03-3266	03-3399
			50T	420	03-3267	03-3400
85 SX (03-18)	13T	03-3423	46T	428	03-3278	03-3401
105 SX (04-11)	14T	03-3304	47T	428	03-3279	03-3402
			48T	428	03-3280	03-3403
			49T	428	03-3281	03-3404
			50T	428	03-3282	03-3405
125 EXC/SX/XC-W (96-18)	12T	03-3406	47T	520	03-3294	-
144 SX (07-08)	13T	03-3342	48T	520	03-3291	03-3268
150 SX/XC/XC-W (09-18)	14T	03-3343	49T	520	03-3295	03-3269
200 EXC/MXC/SX/XC/XC-W (97-16)	15T	03-3344	50T	520	03-3296	03-3270
250 EXC/MXC/SX/XC-XC-W (96-18)			51T	520	03-3297	03-3271
250 EXC-F/SX-F/XC-F/XCF-W (05-18)			52T	520	03-3292	03-3272
300 EXC/MXC/XC/XC-W (96-18)			53T	520	03-3293	03-3273
350 EXC-F/SX-F/XC-F/XCF-W (11-18)			54T	520	03-3243	
360 EXC/MXC/SX (96-97)						
380 EXC/MXC/SX (98-02)						
400 EXC/MXC/SX/XC-W (00-11)						
450 EXC-F/SX-F/XC-F/XC-W (03-18)						
450 SMR (04-14)						
500 EXC/XC-W (12-18)						
505 SX-F/XC-F (08-10)						
520 EXC/MXC/SX (00-02)						
525 EXC/MXC/SMR/SX (03-07)						
525 XC/XC-W (06-07)						
530 EXC/XC-W (08-11)						

MX RACE SPEC (RS) SPROCKETS (Continued)

KTM	FRONT TEETH	PART#	REAR TEETH	PITCH	BLACK	ORANGE
620 EGS/LC4/SC/SX/SXC (96-01)	12T	03-3406	47T	520	03-3294	-
620 Duke (97-99)	13T	03-3342	48T	520	03-3291	03-3268
625 SC/SMC/SXC (02-07)	14T	03-3343	49T	520	03-3295	03-3269
640 LC4 Adventure (98-07)	15T	03-3344	50T	520	03-3296	03-3270
640 LC4 Enduro (00-06)			51T	520	03-3297	03-3271
640 LC4 Supermoto (02-06)			52T	520	03-3292	03-3272
640 Duke (00-06)			53T	520	03-3293	03-3273
660 SMC (03-06)			54T	520	03-3243	-
690 Supermoto (07-10)						
SUZUKI	FRONT TEETH	PART#	REAR TEETH	PITCH	BLACK	N/A
RM65 (03-05)	12T	03-3322	46T	420	03-3274	
	13T	03-3323	47T	420	03-3275	
	14T	03-3324	48T	420	03-3276	
			49T	420	03-3277	
RM80/L (83-01)	13T	03-3327	46T	428	03-3195	
RM85/L (02-18)	14T	03-3328	47T	428	03-3196	
			48T	428	03-3198	
			49T	428	03-3200	
			50T	428	03-3202	
	51T		428	03-3187		
DR-Z110 (03-05)	14T	03-3352				
	15T	03-3353				
RM125 (79-07)	12T	03-3308	47T	520	03-3204	
RM-Z250 (07-12)	13T	03-3309	48T	520	03-3205	
			49T	520	03-3206	
			50T	520	03-3207	
			51T	520	03-3208	
	52T		520	03-3209		
RM-Z250 (04-06)	13T	03-3354	47T	520	03-3188	
			48T	520	03-3189	
			49T	520	03-3190	
			50T	520	03-3191	
			51T	520	03-3192	
			52T	520	03-3193	
			53T	520	03-3194	
RM-Z250 (13-18)	12T	03-3374	47T	520	03-3204	
			48T	520	03-3205	
			49T	520	03-3206	
			50T	520	03-3207	
	51T		520	03-3208		
	52T		520	03-3209		

MX RACE SPEC (RS) SPROCKETS (Continued)

SUZUKI	FRONT TEETH	PART#	REAR TEETH	PITCH	BLACK	N/A
DR-Z250 (01-07)	12T	03-3311	47T	520	03-3204	
RM250 (86-08)	13T	03-3312	48T	520	03-3205	
RMX250 (89-98)	14T	03-3313	49T	520	03-3206	
DR350 (90-99)	15T	03-3314	50T	520	03-3207	
DR-Z400 E (00-07)			51T	520	03-3208	
DR-Z400 S (00-09, 11-18)			52T	520	03-3209	
DR-Z400 SM (05-09, 13-18)						
RM-Z450 (05-12)	13T	03-3361	47T	520	03-3204	
RMX450Z (10-11, 17-18)	14T	03-3362	48T	520	03-3205	
	15T	03-3363	49T	520	03-3206	
			50T	520	03-3207	
			51T	520	03-3208	
			52T	520	03-3209	
RM-Z450 (13-18)	13T	03-3298	47T	520	03-3204	
	14T	03-3299	48T	520	03-3205	
			49T	520	03-3206	
			50T	520	03-3207	
			51T	520	03-3208	
			52T	520	03-3209	
YAMAHA	FRONT TEETH	PART#	REAR TEETH	PITCH	BLACK	BLUE
YZ80 (93-01)	13T	03-3327	46T	428	03-3195	-
	14T	03-3328	47T	428	03-3196	03-3197
			48T	428	03-3198	03-3199
			49T	428	03-3200	03-3201
			50T	428	03-3202	03-3203
			51T	428	03-3187	-
YZ85 (02-18)	13T	03-3317	46T	428	03-3195	-
	14T	03-3318	47T	428	03-3196	03-3197
			48T	428	03-3198	03-3199
			49T	428	03-3200	03-3201
			50T	428	03-3202	03-3203
			51T	428	03-3187	-
YZ125 (99-04)	12T	03-3319	46T	520	03-3214	-
	13T	03-3320	47T	520	03-3215	-
	14T	03-3321	48T	520	03-3216	03-3217
			49T	520	03-3218	03-3219
			50T	520	03-3220	03-3221
			51T	520	03-3222	03-3223
			52T	520	03-3224	03-3225
			53T	520	03-3226	03-3227

MX RACE SPEC (RS) SPROCKETS (Continued)

YAMAHA	FRONT TEETH	PART#	REAR TEETH	PITCH	BLACK	BLUE				
YZ125 (05-18)	13T	03-3379	46T	520	03-3214	-				
YZ250F (01-18)	14T	03-3380	47T	520	03-3215	-				
WR250F (01-18)			48T	520	03-3216	03-3217				
			49T	520	03-3218	03-3219				
			50T	520	03-3220	03-3221				
			51T	520	03-3222	03-3223				
			52T	520	03-3224	03-3225				
WR200 (1992)			53T	520	03-3226	03-3227				
			12T	03-3319						
			13T	03-3320						
			14T	03-3321						
WR250 (91-97) YZ250 (94-98)			48T	520	03-3210	-				
			49T	520	03-3211	-				
			50T	520	03-3212	-				
			51T	520	03-3213	-				
WR250R (08-18) WR250X (08-11)			13T	03-3379						
			14T	03-3380						
YZ250 (99-18) WR400F (99-00) YZ400F (98-99) WR426F (01-02) YZ426F (00-02) WR450F (03-18) YZ450F (03-18)			12T	03-3338	03-3214	-				
			13T	03-3339	03-3215	-				
			14T	03-3340	03-3216	03-3217				
			15T	03-3341	03-3218	03-3219				
					03-3220	03-3221				
					03-3222	03-3223				
					03-3224	03-3225				
WR400F (1998)			53T	520	03-3226	03-3227				
			12T	03-3338	03-3210	-				
			13T	03-3339	03-3211	-				
			14T	03-3340	03-3212	-				
			15T	03-3341	03-3213	-				
			FRONT	415	420	REAR	415	420	COLOR	
			CX 50 JR (97-17)	13T	03-3381	03-3323	35T	03-3408	03-3407	Black
			CX 50 SR (94-17)	14T	03-3382	03-3324	36T	03-3410	03-3409	Black
(Fits 2018 with bolt kit from Cobra)	15T	03-3384	03-3383	37T	03-3412	03-3411	Black			
	16T	03-3386	03-3385	38T	03-3414	03-3413	Black			
				39T	03-3416	03-3415	Black			
CX 65 (07-17)			45T		03-3417	Black				
			46T		03-3418	Black				
			47T		03-3419	Black				
			48T		03-3420	Black				
			49T		03-3421	Black				
			50T		03-3422	Black				

MX SPROCKET BOLT KIT

DESCRIPTION	PART#
Sprocket Bolt Kit	02-3100

ATV CS4 REAR SPROCKETS

ARCTIC CAT	TEETH	PART#
DVX 400 (04-08)	35T	02-2665
	36T	02-2666
	37T	02-2667
	38T	02-2668
	39T	02-2669
	40T	02-2670
HONDA	TEETH	PART#
ATC250R (1986)	37T	02-2650
TRX250R (86-89)	38T	02-2651
TRX250X (87-88)	39T	02-2652
TRX250X (91-92)		
TRX300EX (93-08)		
TRX400EX (99-08)		
TRX400X (09-14)		
TRX450ER (06-09)		
TRX450ER (12-14)		
TRX450R (04-09)		
KAWASAKI	TEETH	PART#
KFX400 (03-06)	35T	02-2665
	36T	02-2666
	37T	02-2667
	38T	02-2668
	39T	02-2669
	40T	02-2670
KFX450R (08-14)	37T	02-2659
	38T	02-2660
	39T	02-2661
KTM	TEETH	PART#
450 SX (09-10)	37T	02-2662
450 XC (08-10)	38T	02-2663
505 SX (09-10, 2012)	39T	02-2664
525 XC (08-09, 2012)		
SUZUKI	TEETH	PART#
LT-Z400 (2009, 12-14)	35T	02-2671
LT-R450 (06-09)	36T	02-2672
	37T	02-2673
	38T	02-2674

ATV CS4 REAR SPROCKETS (Continued)

SUZUKI	TEETH	PART#
LT-Z400 (03-08)	35T	02-2665
	36T	02-2666
	37T	02-2667
	38T	02-2668
	39T	02-2669
	40T	02-2670
YAMAHA	TEETH	PART#
YFM250R/SE Raptor (08-13)	36T	02-2675
YFM350R/SE Raptor (05-13)	37T	02-2676
YFZ450/SE (04-09, 12-13)	38T	02-2677
YFZ450R/SE (09-18)	39T	02-2678
YFZ450X/SE (10-11)		
YFM700 Raptor (13-18)		
YFM700R Raptor (06-09, 11-18)		
YFM700R SE Raptor (06-18)		

ATV RS FRONT SPROCKETS (Continued on next page)

ARCTIC CAT	TEETH	PART#
DVX 400 (04-08)	13T	02-2590
	14T	02-2591
	15T	02-2592
HONDA	TEETH	PART#
TRX450ER (06-09, 12-14)	12T	02-2517
TRX450R (04-09)	13T	02-2518
TRX700XX (08-09)	14T	02-2519
	15T	02-2520
	16T	02-2927
KAWASAKI	TEETH	PART#
KFX400 (03-06)	13T	02-2590
	14T	02-2591
	15T	02-2592
KTM	TEETH	PART#
450 SX (09-10)	12T	03-3406
450 XC (08-10)	13T	03-3342
505 SX (09-10)	14T	03-3343
505 SX (2012)		
525 XC (08-12)		
SUZUKI	TEETH	PART#
LT-Z400 (03-09, 12-14)	13T	02-2590
LT-R450 (06-09)	14T	02-2591
	15T	02-2592

ATV RS FRONT SPROCKETS (Continued from last page)

YAMAHA	TEETH	PART#
YFZ450/SE (04-09, 12-13)	12T	03-3338
YFM660R Raptor (01-05)	13T	03-3339
	14T	03-3340
	15T	03-3341
YFZ450R (09-18)	13T	02-2584
YFZ450R SE (09-18)	14T	02-2585
YFZ450X (10-11)	15T	02-2586
YFZ450X SE (2011)		
YFM700 Raptor (13-18)		
YFM700R Raptor (06-09, 11-18)		
YFM700R SE Raptor (06-18)		

NEW! PRO SERIES FORGED CHAINS & REPL. LINKS

DESCRIPTION	CHAIN	RETAIL	LINK
PT 520PSF 120L	02-1694	\$109.99	02-1695
PT 520PSFUW 120L (O-Ring)	02-1696	\$129.99	02-1697

GOLD SERIES CHAINS & REPLACEMENT LINKS

DESCRIPTION	CHAIN	RETAIL	LINK
PT 415MX 120L NEW!	02-1698	\$34.95	02-1699
PT 420MX 134L	02-3101	\$34.95	02-3102
PT 428MX 134L	02-3103	\$44.95	02-3104
PT 520MX 120L	02-3105	\$84.95	02-3106
PT 520XRC 120L	02-3107	\$99.95	02-3108

NEW! 2.0 SQUARE & FUZION HANDLEBAR PADS

COLORWAY	2.0 SQUARE	FUZION
Race Red	02-1624	02-1632
Race Blue	02-1625	02-1633
Race Yellow	02-1626	02-1634
Race Orange	02-1627	02-1635
Race Green	02-1628	02-1636
Race Pink	02-1629	02-1637
Stealth	02-1630	02-1638
Hi-Viz	02-1631	02-1639
USA	02-1764	02-1640
Black/Black	02-1765	02-8401
Black/White	02-1766	-
Blue/White	02-1767	-
Red/Black	02-1768	-
Yellow/Black	02-1769	-

NEW! ROUND HANDLEBAR PADS

COLORWAY	10" ROUND	8" ROUND
Race Red	02-1641	02-1648
Race Blue	02-1642	02-1649
Race Yellow	02-1643	02-1650
Race Orange	02-1644	02-1651
Race Green	02-1645	02-1652
Race Pink	02-1646	02-1653
Race White	02-1647	02-1654
Black	02-8329	02-8333
Blue	02-8330	02-8334
Red	02-8331	02-8335
White	02-8332	02-8336

BRUSH GUARDS, REPLACEMENT SHIELDS, & EXTENDERS

BRUSH GUARD KITS	PART#
Black	02-2881
Blue	02-3117
Red	02-3118
White	02-3119
Orange	02-3120
Green	02-3121
Yellow	02-3122
REPLACEMENT SHIELDS	PART#
Black	02-2880
Blue	02-3111
Red	02-3112
White	02-3113
SHIELD EXTENDERS	PART#
Black	02-3123

UNIVERSAL 1 1/8" HANDLEBAR MOUNTS

DESCRIPTION	PART#
Universal Solid Mount Kit	02-2821
Universal Rubber Mount Kit	02-2822
Universal Rubber Mount Repl. Bolt Kit	02-2885

GRIP ACCESSORIES

DESCRIPTION	PART#
Grip Glue	02-2882
Grip Donuts	02-4787
Grip Covers	02-4788

SWIVEL CARABINER TIE-DOWNS

DESCRIPTION	PART#
Swivel Carabiner Tie-Downs	02-2819

WIRELESS HOUR METER

DESCRIPTION	PART#
Wireless Hour Meter	02-0685

ACCESSORIES

DESCRIPTION	PART#
Sticker 4.125"x1.5" (10 pack)	01-0083
Trailer Sticker 12"x4" (2 pack)	01-0091
Trailer Sticker 28"x9.5" (2 pack)	01-0092
Large Banner 72"x29"	02-0009
Small Banner 48"x19"	02-0020
Haybale Cover	02-0027
Umbrella	02-0031
Pennants 11"x17" (60 ft.)	02-0071
ProTaper Canopy Top 10'x10'	02-4820
Lanyard	02-5218
Key Chain	02-5219

DEALER DISPLAYS

DESCRIPTION	PART#
Sprocket Counter Display	02-2100
3D Slatwall Sign 8"x20"x1.5"	02-4821
Accessory Arms	02-4823
Grip Display	02-4824
Clamp Slatwall Display	02-4826
Handlebar Box Slatwall Arms (set of 2)	02-4827
Handlebar Slatwall Waterfall Arms (set of 2)	02-4828
Product Display	02-4829
PT Slatwall Channel Card Graphic	50-5214
Vertical Slatwall Banner (set of 2)	50-5672
Slatwall Channel Card Holder 48"x8"	50-5680
Brand in a Box Wall Kit 4'x8'	50-5696

HATS

DESCRIPTION	SM/MD	LG/XL	SNAPBACK
Corp Covert	01-3693	01-3694	-
Squad Mesh	-	-	01-2778
Wool City	-	-	01-2779
Bolt Script	-	-	01-2780

T-SHIRTS

DESCRIPTION	SM	MD	LG	XL	2XL
Bolt Blk	01-2748	01-2749	01-2750	01-2751	01-2752
Bolt Hvy Mtl	01-2753	01-2754	01-2755	01-2756	01-2757
Bolt 3/4	01-2758	01-2759	01-2760	01-2761	01-2762
Stamp Blk	01-2738	01-2739	01-2740	01-2741	01-2742
Stamp Hvy Mtl	01-2743	01-2744	01-2745	01-2746	01-2747
3D Blk	01-2728	01-2729	01-2730	01-2731	01-2732
3D Hvy Mtl	01-2733	01-2734	01-2735	01-2736	01-2737

JACKETS & HOODIES

DESCRIPTION	SM	MD	LG	XL	2XL
Race Spec Jkt	01-2763	01-2764	01-2765	01-2766	01-2767
3D Zip Hdy Blk	01-2768	01-2769	01-2770	01-2771	01-2772
3D Zip Hdy Gry	01-2773	01-2774	01-2775	01-2776	01-2777

NEW! ALUMINUM HANDLEBARS (7/8")

MX BEND	PART#	A	B	C	D	E	F
High - Washougal	02-1141	800	99	69	243	54	190
Mid/High - Unadilla	02-1142	800	95	67	233	60	190
Mid - Redbud	02-1143	800	92	60	225	57	195
Mid/Low - Millville	02-1144	800	82	56	230	57	200
Low - Southwick	02-1145	800	77	40	188	56	230
ATV BEND	PART#	A	B	C	D	E	F
ATV	02-1147	813	160	104	236	100	215
MINI BEND	PART#	A	B	C	D	E	F
Mini	02-1146	730	117	89	166	50	195

NEW! HALF WAFFLE MX GRIPS

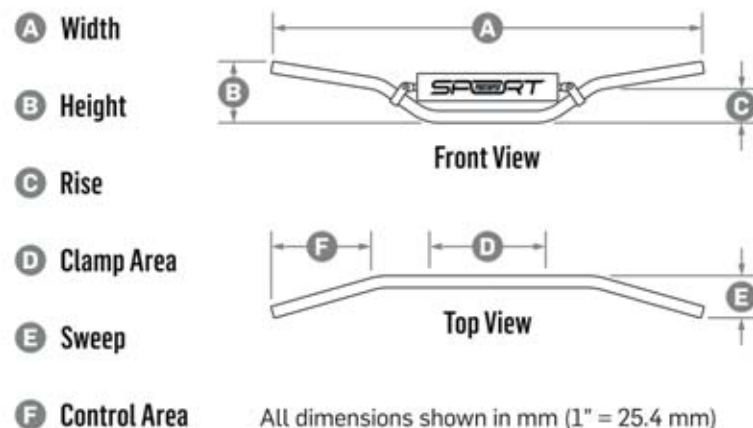
DESCRIPTION	PART#
Black	02-1148
Grey	02-1149

NEW! AOF CLUTCH PERCH & LEVER

DESCRIPTION	PART#
AOF Clutch Perch & Lever	02-1138
AOF Clutch Perch & Lever w/ Hot Start	02-1139
AOF Replacement Lever	02-1140

NEW! ALUMINUM SHIFT LEVERS

HONDA	PART#
CRF50F/XR50R/Z50 (69-18) STD	02-1155
CRF50F/XR50R/Z50 (69-18) Long	02-1162
CRF70F/XR70R (01-12) STD	02-1155
CRF70F/XR70R (01-12) Long	02-1162
CR80R/RB (96-02)	02-1156
CRF80F/XR80R (01-09, 11-13)	02-1178
CR85R/RB (03-07)	02-1156
CRF100F/XR100R (01-09, 11-13)	02-1178
CR125R (93-07)	02-1153
CRF150F (03-09, 12-18)	02-1178
CRF150R/RB (07-18)	02-1181
CRF230F (03-09, 12-18)	02-1178
CR250R (84-87, 92-03)	02-1154
CR250R (04-07)	02-1174
CRF250R (04-09)	02-1157
CRF250X (04-09, 12-18)	
CRF250R (2010)	02-1188
CRF250R (11-17)	02-1187



All dimensions shown in mm (1" = 25.4 mm)

NEW! ALUMINUM SHIFT LEVERS (Continued)

HONDA	PART#
CRF250R (2018)	02-1197
CRF450R (02-07)	02-1157
CRF450X (06-16)	02-1188
CRF450R (08-16)	
CRF450R (17-18)	02-1197
CRF450RX (17-18)	
CR500R (84-88)	02-1154
HUSQVARNA	PART#
TC65 (17-18)	02-1189
TC85 (2018)	02-1196
TC125 (17-18)	
TE150 (17-18)	
FC250 (16-18)	02-1194
TC250 (17-18)	02-1193
TE250 (17-18)	
TE300 (17-18)	
FC350 (16-18)	02-1194
FX350 (16-18)	
FC450 (16-18)	02-1195
FX450 (16-18)	
KAWASAKI	PART#
KX60 (86-03)	02-1161
KX65 (00-18)	02-1184
KX80 (91-00)	02-1161
KX85 (01-18)	
KX100 (95-18)	
KLX110 (02-18)	02-1163
KX125 (88-93)	02-1161
KX125 (94-02)	02-1160

NEW! ALUMINUM SHIFT LEVERS (Continued)

KAWASAKI	PART#
KX125 (03-05)	02-1152
KX250 (88-93)	02-1161
KX250 (94-07)	02-1160
KX250F (04-05)	02-1164
KX250F (06-08)	02-1176
KX250F (09-18)	02-1185
KLX250F (09-10)	02-1186
KX450F (06-08)	02-1173
KLX450R (08-09)	
KX450F (09-15)	02-1183
KX450F (16-18)	02-1191
KX500 (88-93)	02-1161
KX500 (94-04)	02-1160
KTM	PART#
65 SX (09-18)	02-1189
85 SX (2018)	02-1196
125 EGS/EXC/SIX DAY LE (97-99)	02-1177
125 SX/SXS (98-00)	
125 EXC/EXE (00-01, 04-06)	02-1158
125 SX/SXS (01-09, 11-15)	
125 SX (17-18)	02-1196
144 SX (07-08)	02-1158
150 SX (09-15)	
150 SX (17-18)	02-1196
150 XC-W (17-18)	
200 EXC/MXC (97-00)	02-1177
200 EXC/MXC (01-05)	02-1158
200 SX (03-04)	
200 XC/XC-W (06-16)	
250 EGS/EXC/MXC (1994, 97-00, 04-05)	02-1177
250 SX/SXS (96-00, 03-15)	
250 EXC/MXC (01-03)	02-1158
250 SX (01-02)	
250 EXC-R/EXC-G (02-05)	02-1159
250 SX-F/SXS-F (05-10)	02-1177
250 XC/XC-W/XC-F/XCF-W (06-15)	
250 SX-F/SXS-F (11-15)	02-1159
250 SX-F (16-18)	02-1194
250 SX (17-18)	02-1193
250 XC-W (17-18)	
300 EGS/EXC/MXC (94-00, 04-05)	02-1177

NEW! ALUMINUM SHIFT LEVERS (Continued)

KTM	PART#
300 SX (1994)	02-1177
300 EXC/MXC (01-03)	02-1158
300 XC/XC-W (06-16)	02-1177
300 XC/XC-W (17-18)	02-1193
350 SX-F (16-18)	02-1194
350 XC-F (16-18)	
360 EGS/EXC/MXC/SX (96-97)	02-1177
380 EXC/MXC/SX (98-00)	
380 EXC/MXC/SX (01-02)	02-1158
400 EXC/-G/-R/MXC/XC-W (00-11)	02-1159
400 SX (00-02)	
450 EXC/-G/-R/MXC-G (03-11)	
450 SX/SXS (03-06)	
450 SMR/SMS (04-09)	
450 XC/XC-G (04-07)	
450 SX-F (07-12)	02-1158
450 XC-W (07-16)	02-1159
450 XC-F (08-09)	02-1158
450 SX-F (13-15)	02-1159
450 SX-F (16-18)	02-1195
450 XC-F (16-18)	
505 SX-F (07-08)	02-1158
505 XC-F (08-09)	
520 EXC/EXC-E/MXC (99-02)	02-1159
520 SX (00-02)	
525 EXC/EXC-G/MXC-G (03-06)	
525 SX/SMR (03-05)	
525 XC/XC-G/XC-W (06-08)	
530 EXC-R/XCR-W/XC-W (08-11)	
540 SXS (01-06)	
560 SMR (06-07)	
SUZUKI	PART#
RM60 (2003)	02-1161
RM65 (03-05)	02-1160
RM80 (86-01)	02-1168
RM85/L (02-18)	
RM100 (2003)	02-1161
DR-Z110 (03-05)	02-1163
RM125 (93-08)	02-1165
RM250 (89-93)	
RM250 (94-08)	02-1167

NEW! ALUMINUM SHIFT LEVERS (Continued)

SUZUKI	PART#
RMX250 (95-98)	02-1167
RM-Z250 (04-06)	02-1164
RM-Z250 (07-18)	02-1182
RM-Z450 (08-18)	02-1180
YAMAHA	PART#
YZ80 (93-01)	02-1179
YZ85 (02-18)	
YZ125 (96-04)	02-1169
YZ125 (05-18)	02-1172
YZ250 (96-98)	02-1169
YZ250 (99-04)	02-1171
YZ250 (05-18)	02-1172
YZ250X (16-18)	
WR250F (01-06)	02-1170
YZ250F (01-05)	
WR250F (07-13)	02-1175
YZ250F (06-13)	
WR250F (17-18)	02-1190
YZ250F (17-18)	
YZ250FX (17-18)	
WR400F (99-00)	02-1170
YZ400F (98-99)	
WR426F (01-02)	
YZ426F (00-02)	
WR450F (03-06)	
YZ450F (03-05)	
WR450F (07-13)	02-1175
YZ450F (06-13)	
WR450F (16-18)	02-1190
YZ450F (2017)	
YZ450FX (16-18)	
YZ450F (2018)	02-1192

NEW! BAR MOUNT CONES (Continued)

HONDA	PART#
CRF450X (05-09, 12-18)	02-1120
KAWASAKI	PART#
KX125 (04-05)	02-1119
KX250 (04-07)	
KX250F (04-14)	
KX250F (15-18)	02-1118
KX450F (06-11)	02-1119
KX450F (12-18)	02-1118
KLX450R (08-09)	02-1119
SUZUKI	PART#
RM-Z250 (07-18)	02-1121
RM-Z450 (08-18)	
RMX450Z (10-11,17-18)	
YAMAHA	PART#
WR250F (15-18)	02-1122
YZ250F (14-18)	
YZ250FX (15-18)	
WR450F (16-18)	
YZ450F (14-18)	
YZ450FX (16-18)	

NEW! BAR MOUNT CONES

HONDA	PART#
CR125R (00-07)	02-1120
CR250R (99-07)	
CRF250R (04-18)	
CRF250X (04-09, 12-13, 15-18)	
CRF450R (02-18)	
CRF450RX (17-18)	







ZACH OSBORNE

SWEEPS 2017

2017 was a breakout season for Zach Osborne. It began in Atlanta's Georgia Dome with his first career supercross win, and, two championships later, ended with a commanding 1-1 finish at the Ironman National in Crawfordsville, Indiana. Along the way, he mounted an unforgettable charge through the pack in Las Vegas, winning the title after making a legendary last-corner block pass. Zach's strong work ethic and never-say-die attitude embody the spirit of a true racer, and we're proud to have supported his efforts in 2017. Congratulations on an incredible year, Zach, and here's to many more!

