

REMUS
CUSTOMEXHAUST



KODLIN X-REMUS

KODLIN AND REMUS TEAM UP FOR THE DEVELOPMENT OF MUFFLERS THAT WILL TAKE YOUR HARLEY-DAVIDSON® TO THE NEXT LEVEL.



“

WHEN IT COMES TO BIKES
3 THINGS ARE ESSENTIAL:
SOUND, DESIGN AND POWER.
AND I LIKE THE REMUS SOUND.

CUSTOM BIKE BUILDER FRED KODLIN
ABOUT THE COOPERATION WITH REMUS.

Fred Kodlin

WHEN DESIGN MEETS **SOUND**



REMUS COMPLETE SYSTEM



REMUS complete system with ASC
with changeable end caps

REMUS COMPLETE SYSTEM



REMUS complete system with ASC
with changeable end caps

REMUS SLIP-ON SYSTEM



REMUS slip-on system with ASC
and changeable end caps

REMUS SLIP-ON SYSTEM



REMUS slip-on system with ASC
and changeable end caps

REMUS ILLUMINATED END CAPS



Blue illuminated end cap on
REMUS slip on exhaust

REMUS ILLUMINATED END CAPS



RED illuminated end cap on
REMUS slip on exhaust

HARLEY-DAVIDSON® SOFTAIL 107 / 114 CI



Kodlin X-REMUS complete system @
HARLEY-DAVIDSON® Breakout Custom

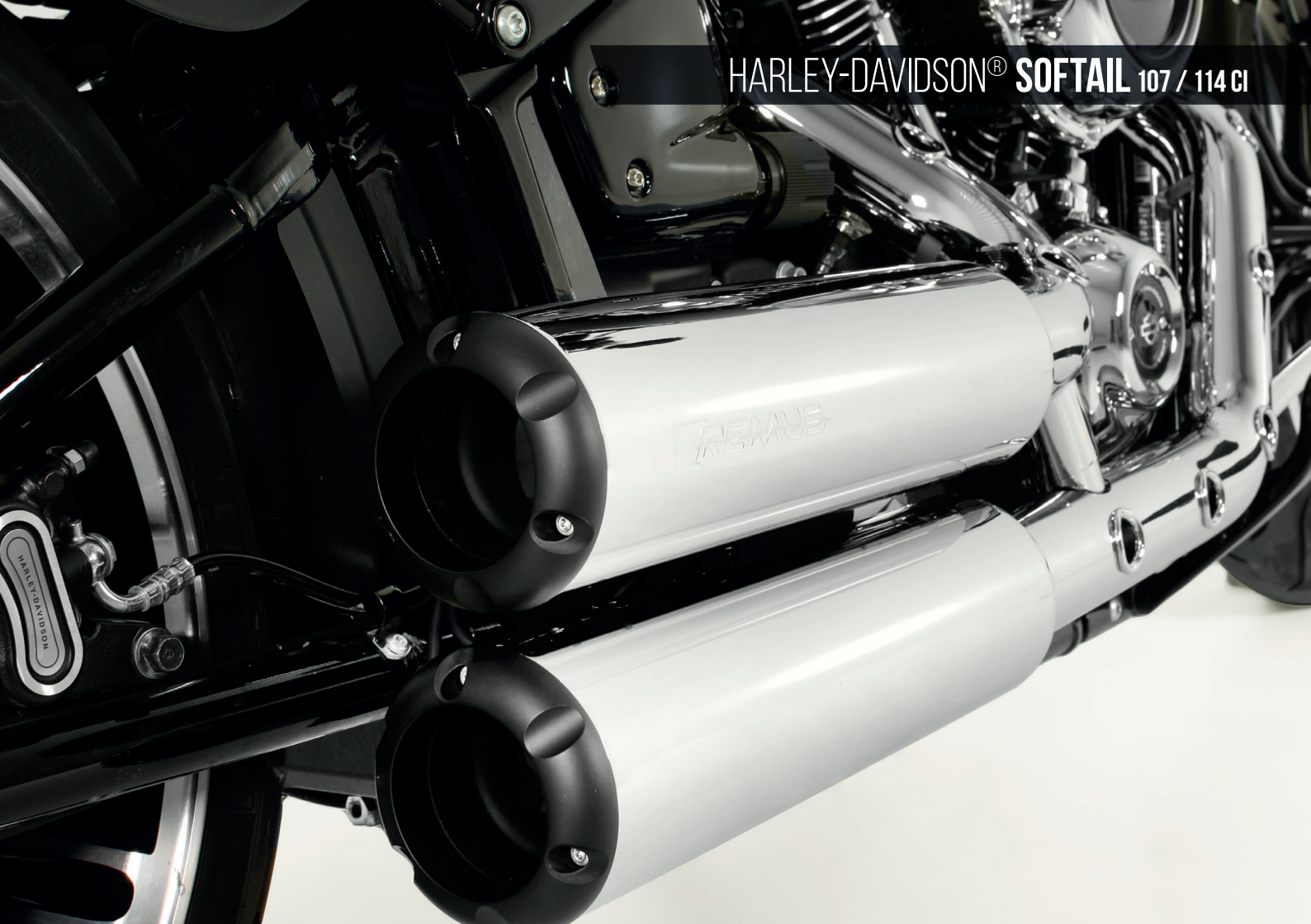
HARLEY-DAVIDSON® SOFTAIL 107 / 114 CI



HARLEY-DAVIDSON® SOFTAIL 107 / 114 CI



HARLEY-DAVIDSON® SOFTAIL 107 / 114 CI



HARLEY-DAVIDSON® SOFTAIL 107 / 114 CI



HARLEY-DAVIDSON® SOFTAIL 107 / 114 CI



HARLEY-DAVIDSON® SOFTAIL 107 / 114 CI



HARLEY-DAVIDSON® SOFTAIL 107 / 114 CI



HARLEY-DAVIDSON® SOFTAIL 107 CI



HARLEY-DAVIDSON® SOFTAIL 107 CI



HARLEY-DAVIDSON® SOFTAIL 107 / 114 CI



HARLEY-DAVIDSON® SOFTAIL 107 / 114 CI



HARLEY-DAVIDSON® SOFTAIL 107 CI



HARLEY-DAVIDSON® SOFTAIL 107 CI



HARLEY-DAVIDSON® SPORTSTER 883 / 1200



HARLEY-DAVIDSON® **SPORTSTER** 883 / 1200



HARLEY-DAVIDSON® SPORTSTER 883 / 1200



HARLEY-DAVIDSON® SPORTSTER 883 / 1200



HARLEY-DAVIDSON® STREET 750 / STREET ROD



HARLEY-DAVIDSON® STREET 750 / STREET ROD



HARLEY-DAVIDSON® TOURING 107/114/117 CI



HARLEY-DAVIDSON® TOURING 107/114/117 CI



HARLEY-DAVIDSON® TOURING 107/114/117 CI



HARLEY-DAVIDSON® TOURING 107/114/117 CI



HARLEY-DAVIDSON® TOURING 107/114/117 CI



REMUS slip-on with ASC @
HARLEY-DAVIDSON® Road King 117

HARLEY-DAVIDSON® TOURING 107/114/117 CI



REMUS ASC (ACTIVE SOUND CONTROL)

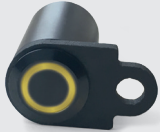
PUSHBUTTON FUNCTIONS



LED loop
OFF – valve
closed



LED loop
GREEN – valve
slightly open



LED loop
YELLOW – valve
wide open



LED loop
RED – valve
fully open

- » 4 flap positions, adjustable by pushbutton (CAN bus controlled flap system)
- » Flap made of milled casting
- » Flap with EC approval
- » Newly developed actuator
- » Heat-decoupled by Inconel spring

EK 30 / EK 40



EK 50 / EK 60



REMUS END CAPS \varnothing 90 MM / \varnothing 102 MM



END CAP EXTENSION SET \varnothing 102 MM x 25 MM

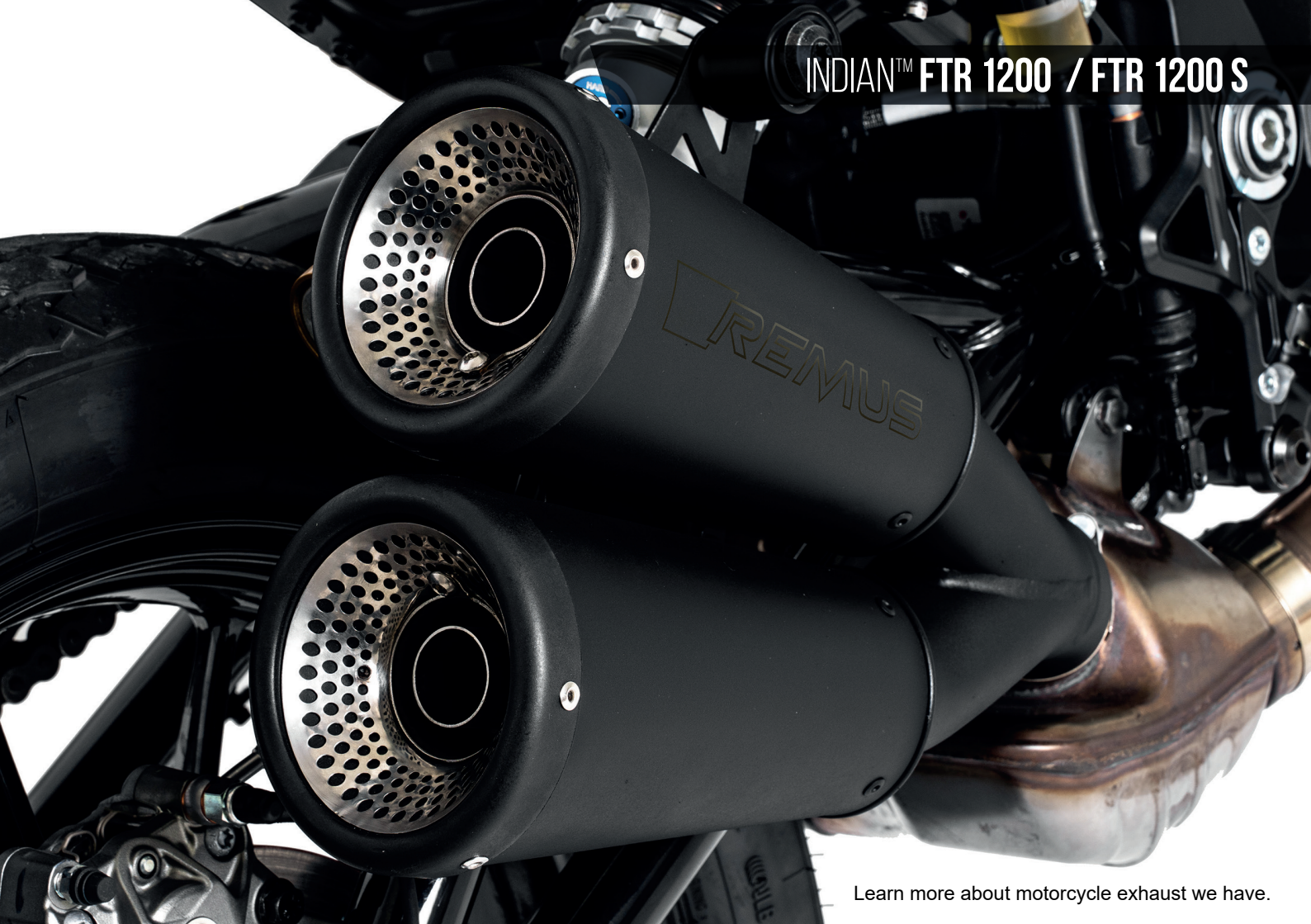


INDIAN™ FTR 1200 / FTR 1200 S



REMUS slip-on @
Indian® FTR 1200

INDIAN™ FTR 1200 / FTR 1200 S



Learn more about motorcycle exhaust we have.