

Ride Engineering 2018-19

Accessory Catalog

2018-19 Off-road

270mm Rotors & Billet Hanger Brackets.....	page 1
Billet Caliper & Front Brake Lines.....	page 2-4
Brake Accessories.....	page 4-6
Mini Brake Lines & Rear Brake Lines.....	page 7
Bar Mounts & Poly Cones.....	page 8
YZ & KX Triple Clamps.....	page 9
CR/KTM/Husky/RM Triple Clamps & Stab. Mounts....	page 10
Suspension Links.....	page 11
Engine.....	page 12
Controls & Raptor Pegs.....	page 13
Wheel Accessories.....	page 14

Ride Engineering 2018 RMZ450



BRAKE ACCESSORIES



270mm Oversized Rotor Kits – 270mm Rotors- 270mm Hanger Brackets

Our new 270mm Solid Wave Rotor is made by Galfer exclusively for Ride Eng. The special grade stainless/iron alloy material is imported from Japan, manufactured in Spain, then imported to the US and is a favorite among most of the top level motocross teams. All the hanger brackets are precision machined by Ride Eng. and made in the USA.

Appl: 2009-2019 KTM125/150/250/250F/300/350F/450F; 2014-2019 HUSKY 125/250/250F/350F/450F	KT-00270-KT
Appl: 2006-2019 KX250F/450F & 2007-2011 KLX450R	KX-00270-KT
Appl: 2007-2019 YZ250F & 2008-2017 YZ450F; WR250/FX250 2015-2019; WR450 2016-2019	YZ-00270-KT
Appl: 2015-2018 CRF250R/450R/250RX	CR-00270-KT
Appl: 2006-2019 RM450Z; 2007-2019 RM250Z; RM450X	RM-00270-KT
Appl: 2009-2019 KTM125/150/250/250F/300/350F/450F; 2014-2019 HUSKY 125/250/250F/350F/450F	KT-00270-SS
Appl: 2006-2019 KX250F/450F & 2007-2011 KLX450R	KX-R0270-SS
Appl: 2007-2019 YZ250F & 2008-2018 YZ450F WR250/FX250 2015-2019; WR450 2016-2019	YZ-R0270-SS
Appl: 2004-2019 CR125/250/250F/450F/250X/450X	MX-R0270-SS
Appl: 2006-2019 RM450Z; 2007-2018 RM250Z; RM450X	RM-R0270-SS
Appl: 2006-2019 KX250F/450F; 2006-2019 RM450Z/X; 2007-2019 RM250Z	RX-HB270-BA
Appl: 2007-2019 YZ250F/FX & 2008-2019 YZ450F; WR250/FX250 2015-2019; WR450 2016-2019	YZ-HB270-BA
Appl: 2015-2018 CRF250R/450R/450RX	CR-HB270-BA
Appl: 2009-2019 KTM125/150/250/250F/300/350F/450F; 2014-2019 HUSKY 125/250/250F/350F/450F	KT-HB270-BA

BRAKE ACCESSORIES



Billet Front Brake Caliper V2

Increases stopping power with a more progressive feel and better modulation between the rider's input and front tire traction. We've achieved this with larger pistons, reducing flex and providing large fins for better cooling. V2 is easier to bleed making installation faster and it reduces drag on the front wheel.

Appl:

'04-'18 CR125/250/CRF250/450/CRX250/450
(will fit 2019 if CR-00270-KT is also used)
'06-'19 KX250F/450F & KXL450R
'06-'19 RMZ450; '07-'19 RMZ250
'04-'15 WR250F/450F

master cylinder must be upgraded to 11mm

'04-'19 YZ125/250/250X
250F/450F/WR250F/450F/250FX/450FX

MX-BC000-CA (silver)
MX-BC000-BA (black)

Stock Billet Hanger Bracket

Appl.: 240mm, CR125/250/250F/450F/250X/450X 04-14; 250mm WR250F/450F 04-15
MX-HB245-BA (black)
Appl.: 250mm, KX250F/450F 06-14; RM250Z 07-17 & RM450Z 06-17
RX-HB250-BA (black)



Honda Braided Steel Brake Line

Improves stopping power and reduces fade over the stock plastic line. Why? Because expansion is close to zero under all riding conditions. Our lines are made from extremely flexible Dupont Teflon steel. They will never crack or leak for the lifetime of your motorcycle. '04-'19 CRs & CRFs require Brake-line Clamp (page 3) for installation.

Appl: '90-'08 CR125/250
'02-'19 CRF250/450

BL-01212-CL (clear)
BL-01212-BK (black)



BRAKE ACCESSORIES

Suzuki Braided Steel Brake Line

Made from extremely flexible Dupont Teflon steel, our line maximizes braking power without fade. Expansion remains close to zero under all riding conditions. Requires Brake-line Clamp (page 3) for installation.

Appl: '99-'08 RM125/250 -- '04-'19 RM250Z/450Z

BL-01212-CL (clear) BL-01212-BK (black)

Kawasaki & KTM Braided Steel Brake Line

Made from extremely flexible Dupont Teflon steel, our line maximizes braking power without fade. Expansion remains close to zero under all riding conditions. Requires Brake-line Clamp (page 3) for installation.

Appl: '94-'19 KX125/250/250F/450F; KTM SX150/250/250F/350F/450F

BL-00012-CL (clear) BL-00012-BK (black)



Yamaha Direct Route Stainless Steel Brake Line

The length and routing of our YZ line has been optimized for maximum braking power. Made from extremely flexible Dupont Teflon steel, it will never crack or leak for the lifetime of your motorcycle. Expansion is close to zero under all riding conditions to reduce fade. (Requires Brake-line Clamp (page 3) for installation)

Appl: '96-'04 YZ125/250/250F/426F 450F

BL-00012-CL (clear)

BL-00012-BK (black)



Yamaha Braided Steel Brake Line

Improves stopping power and reduces fade over the stock plastic line. Why? Because expansion is close to zero under all riding conditions. Require Brake-line Clamp (page 3) for installation.

Appl: '05-'19
YZ125/250/
250F/450F/250FX/450FX

BL-01212-CL (clear)

BL-01212-BK (black)

BRAKE ACCESSORIES

CRX/WRF/KLX Braided Steel Brake Line

Made from extremely flexible Dupont Teflon steel, our line maximizes braking power without fade. Expansion remains close to zero under all riding conditions. (Requires Brake-line Clamp (page 3) for installation)

Appl: '04-'18 CRF250X/450X / '05-'19 WR250F/450F / '07-'11 KXL450F BL-30312-CL (clear only)

Direct Route Stainless Steel Brake Line

Our WR line routes as good as stock around the headlight, but then it routes directly to the caliper, like the Honda, making it shorter than the stock YZ line! Also made from extremely flexible Dupont Teflon steel, it improves stopping power and reduces fade. Expansion is close to zero under all riding conditions. (Requires Brake-line Clamp (page 3) for installation)

Appl: WR250f/400f/426f/450f
'99-04 & '08-'15 WR250X/R
- RMX450Z 2010-11,17,18

BL-02012-CL



Brake Line Clamp

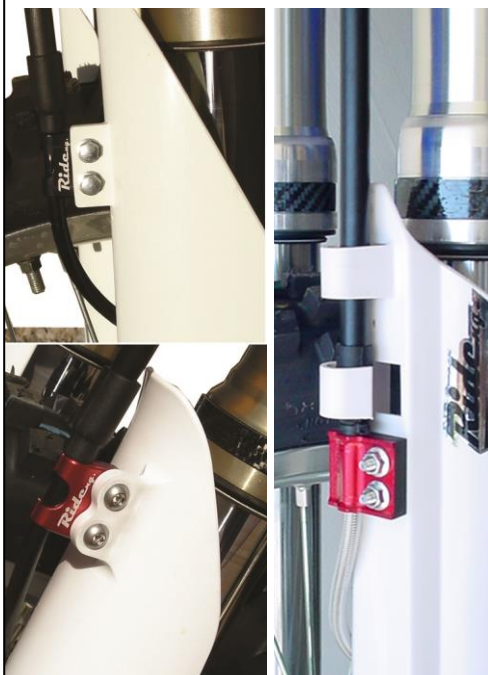
This billet brake line mount is designed to hold braided steel brake lines, which are much narrower than stock lines.

Appl: '04-'08 RM125/250
'04-'19 RM250Z/450Z
'05-'19 RM85
'04-'07 KX125/250
'04-'19 KX250F/450F
'08-'11 KLX450F
'14-'19 KX85/100

RX-BLC00-GN (green)
RX-BLC00-BA (black)
RX-BLC00-MB (blue)

Appl: '04-'08 CR125/250
'04-'19 CRF250/450
'06-'19 CRF250X/450X
'05-'19 YZ125/250/250F/450F
'05-'19 WR & FX 250F/450F/250X/250R
'19 YZ85

CR-BLC00-RA (red)
CR-BLC00-MB (blue)
CR-BLC00-BA (black)



Brake Line Clamp

(direct-route conversion)

Machined from billet aluminum with Delrin plastic base.

Provides a flat base for installation on all fork guards (Suzuki – Yamaha – Kawasaki including minis). Comes with stainless steel mounting hardware.

Appl: '99-'03 RM125/250
'00-'04 RM85
'96-'04 YZ125/250/YZ250f
'98-'04 YZ400f/426f/450f
'99-'04WR250f/400f/426f/450f
'94-'03 KX125/250/500
'93-'18 YZ85
'93-'13 KX85/100

MX-BLC00-BA (black)
MX-BLC00-RA (red)

BRAKE ACCESSORIES



Plastic Brake Line Guide

Required for all Ride Eng. triple clamps. All mounting hardware included.

Appl: CR80/125/250/250f/450f/500
RM80/85/125/250/250z/450z
YZ80/85/125/250/250f/426f/450f
KX85/100/125/250/250f/500

MX-BLG00-RD (red)
MX-BLG00-BK (black)



Rear Master Cylinder Extensions

Master-cylinder extensions increase fluid capacity to help dissipate heat. They are designed to help cool and keep the rear brake fade free! (gasket & hardware incl.)

Appl: '02-'19 CR125/250/150f/250f/450f & CR250X/450X

CR-MCE00-RA (red)

Appl: '04-'19 Suzuki 250z/450z & '05-'08 RM125/250
'03-'19 KX125/250/250F/450F

RX-MCE00-RA (red)
RX-MCE00-GN (green)



BRAKE ACCESSORIES



Master Cylinder Covers

(All front master cylinder covers come with matching hex screws)

Appl: Yamaha/Kawasaki/Suzuki FRONT

MX-MCC0F-RA (red) '89-'19

MX-MCC0F-MB (blue) '02-'19

YZ-MCC0F-MB (blue) '07 YZ250F & '08-'19 YZ/YZF/FX all & '16-'18 WR450 YZ-

MCC0F-RA (red) '07 YZ250F & '08-'19 YZ/YZF/FX all & '16-'18 WR450 MX-

MCC0F-GN (green) '92-'18

Appl: Kawi '19, Honda '96-'19 FRONT

CR-MCC0F-RA (red)

CR-MCC0F-GN (green)

Appl: KTM FRONT '00-'19

KT-MCC0F-BA (black)

KT-MCC0F-GE (orange)

Appl: '03-'19 Yamaha REAR
YZ/WR/FX all except 85

Appl: '03-'19 Kaw KX125/250/250F/450F REAR
'04-'19 Suzuki RMZ250/450 '05-'08 RM125/250

Appl: KTM '00-'19 & Husky '14-'19 REAR

KT-MCC0R-BA (black)

KT-MCC0R-GE (orange)

YZ-MCC0R-RA (red)

YZ-MCC0R-MB (blue)

RX-MCC0R-MB (blue)

RX-MCC0R-RA (red)

RX-MCC0R-GN (green)

Appl: '02-'19 CR125/250/150f/250f/450f

REAR CR250X/450X

CR-MCC0R-RA (red)



Anodized Alum. Banjo Bolt Kit

(2/ banjos, 4/washers incl.)

Appl: most bikes

60% lighter than stock steel banjos. 14mm heads for easy installation.

Appl: HON/KAW/SUZ/YAM

M10x1.25P MX-BBB00-RA (red)

M10x1.25P MX-BBB00-MB (blue)

Appl: KTM/HUSQVARNA

M10x1.0P MX-BBB10-BA (black)



BILLET REAR BRAKE CLEVIS

Appl: '03-'19 Yamaha YZ125/250/
YZ250F/450F/WR250F/450F /250X
YZ250FX/450FX; Suzuki RM450Z
'05-'17 & RM250Z '07-'17

MX-BC006-MB (blue)

MX-BC006-RA (red)

Appl: '04-'19 Kawasaki KX250F/450F

KX250 '05-'07, KXL450F; '02-'18 YZ85

& RM250Z '04-'06

MX-BC008-MB (blue)

MX-BC008-GN (green)

MX-BC008-RA (red)

Appl: '02-'19 Honda

CR125/250/150F/250F/450F/CR250X/450X

& RM250Z '04-'06

CR-BC006-RA (red)

BRAKE LINES FOR MINIS

Braided Steel Brake Line: CR80/85

Our brake lines will improve stopping power, eliminate fade and lower your lap times. Feel the difference a braided steel line can make!

BL-M1212-CL
CR85 reg. bars

BL-3M312-CL
CR85 tall bars, CR85
Expert
& CRF150



Braided Steel Brake Line: RM85 '05-'19

(Uses same line as CR85.)

BL-M1212-CL

(Requires Brake line
Clamp, rx-blc00-ba
or rx-blc00-mb)

Direct Route Line: YZ/KX80/85/100 '93-'19

The length and routing has been optimized for maximum performance. Now 2" longer to accommodate wider/taller handlebars. (YZ85 requires Brake-line Clamp, mx-blc00-ba or ra; KX85 2014+ requires rx-blc00-ba, mb or gn)

BL-M0012-CL

BRAIDED STEEL REAR BRAKE LINES

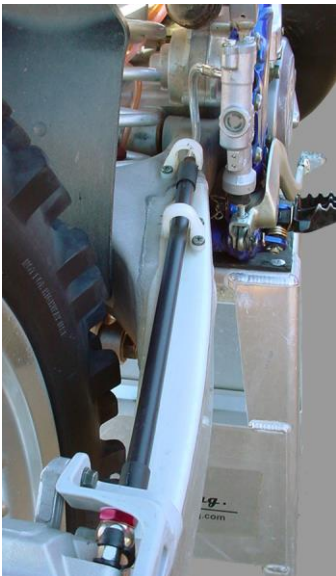
Appl: '03-'19 Yamaha YZ125/250 '04-'19 Kawasaki KX250F/450F '02-'19 CR125/250/250f/450f '03-'19 KTM 150/250/
YZ/WR/FX250F/450F '04-'17 RMZ250/450 '05-'08 RM125/250 CR250X/450X & WR250X/R 250F/350F/450F

BL-Y4020-CL (clear)
BL-Y4020-BK (black)

BL-04040-CL (clear)
BL-04040-BK (black)
'18-'19 RMZ450
BL-Z3020-CL (clear)

BL-03020-CL (clear)
BL-03020-BK (black)

BL-K9020-CL (clear)
BL-K9020-BK (black)



YZ/YZF/WR/WRF



RM/RMZ/KXF



CR/CRF/CRX/WRX



KTM

ONE-PIECE BAR MOUNTS & TRIPLE CLAMPS



Ride Eng.'s Fourth Gen. Bar Mounts

This one-piece 1 1/8" or 7/8" design is light weight and further increases strength and torsional resistance in the event of a crash. Precision machined with 3mm of adjustability forward or back. We also machine our own 12mm dia. stainless steel posts that resist bending much better than the cheap bolts used by other competing brands.

Appl: CR/CRF125/250/450/500 '99-'19 & CRX250/450
MX-BBM00-CA 1 1/8"

CR-BBM78-00 7/8"

Appl: KX125/250/250F/450F '05-'19 & KLX450R
RM250Z '04-'06

KX-BBM00-CA 1 1/8"

KX-BBM78-00 7/8"

Appl: RM250 '03-'08 / RMZ450 '05-'07 & RMZ250 '07
RM-BBM07-CA

Appl: RMZ250/450 '08-'19

RM-BBM08-CA 1 1/8"

Appl: KTM '13-'19 (Rideng Clamps Only)

KX-BBM00-CA 1 1/8"

Appl: YZ250F/450F '14-'19; WR250/FX250 '15-'19

WR450/FX450 '16-'19 & All Rideng YZ clamps

YZ-BBM00-CA 1 1/8"

Replacement Posts

Appl: CR/CRF/CRX (stock length) CR-BMS00-SS
KX/RM/KTM (stock length) KX-BMS00-SS

With 10mm Taller Bar Mount Spacers

CR/CRF/CRX (plus 10mm) CR-BMS10-SS

KX/KXF/KTM (plus 10mm) CR-BMS00-SS

Round Polyurethane Cone Kits

Come with four cones and four cupped washers. A choice of soft or firm material to help tune the amount of dampening.

Appl: CR/CRF/CRX & YZ/YZF/FX/WRF

CR-PC000-KT Firm (red) CR-PC00Y-KT Soft (yellow)

Appl: KX/KXF

KX-PC000-KT Firm (red) KX-PC00Y-KT Soft (yellow)

Appl: RM/RMZ & Rideng KTM

RM-PC000-KT Firm (red) RM-PC00Y-KT Soft (yellow)

NEW! Bar Mount for Scott's & GPR Stabilizers

This Bar Mount has a one-piece top that is designed to resist bending much better than the stock bar mount with an adjustable plate that will hold a Scott's or GPR steering damper. Bar mount height remains the same as stock and the bar position can be adjusted forward or back.

Appl: CR125/250/250F/450F/500 '00-'19

P.N.: MX-SM106-00

Appl: KX125/250/250F/450F '05-'19 & KTM/HUSKY '10-'19

P.N.: MX-SM100-00

(Ride Eng. top clamp required for KTM/Husky applications)

Appl: YZ250F/250F '14-'19/ YZ250FX/WR250F '15-'19

YZ450FX/WR450F '16-'19

P.N.: MX-SM125-00

GEN IV Replacement One-Piece Bar Mounts for Yamaha & KTM

Triple Clamps

3mm of adjustment front or back. Rubber cushion insulates the handlebars from vibration and reduces hand fatigue. Stock Height (Add 10mm spacer (AF-BMS00-00) to be equivalent to stock YZ250F height-pre 2014). KTM mount stronger than stock and 2mm lower.

Appl: stock YZ triple clamps ('06-'13) & '14-'19 YZ125/250

P.N.: AF-BBM00-CA

Appl: stock replacement KTM & Husky triple clamps 2015.5-2019

P.N.: KT-BBM00-CA

Appl: YZ85 Over Sized Bar Mounts (Ride Eng Clamps only)

P.N.: AF-BBM85-CA

5 & 10mm Taller Bar Mount Spacers

Appl: All Rideng Bar Mounts

10mm AF-BMS10-00

5mm AF-BMS05-00



Ride Eng. YZ450F Triple Clamp Set

Our precision machined billet Triple Clamps are re-designed and incorporate a **new rubber mounting system**. They weigh 7oz less than stock. 20mm offset improves handling on the YZ450. Polyurethane cone kit (CR-PC000-KT), hardware kit (MX-10125-KT) and new one-piece bar mount (YZ-BBM00-CA) required on 2013 and older models.

Appl: YZ450F 2010-19 & 2012-19 YZ250F; 250FX/250WR 2015-19; WR/FX450 2016-19

YZ-TB04T-MB (blue)	20mm
YZ-TB04T-BA (black)	20mm
YZ-TB02T-MB (YZ blue)	22mm
YZ-TB02T-BA (black)	22mm
YZ-TB623-00 (silver)	23.5mm



Mini Triple Clamp Set-Blue

4 handlebar position adjustability.
Oversized Bar mount required.

Appl: '02-'18 YZ85
YZ-TB825-MB (Blue)

Top Clamp Only-Silver
4 handlebar position adjustability.
Oversized Bar mount required.

Appl: '02-'18 YZ85
YZ-BC825-00 (Silver)

Ride Eng. YZ/YZF Rubber Mount Triple Clamp Set

These **new rubber mounted clamps** improve handling and absorb vibration. Polyurethane cone kit (CR-PC000-KT), hardware kit (MX-10125-KT) and new one-piece bar mount (YZ-BBM00-CA) required on 2013 and older models. ('05 YZs must use '06-'18 front no. plate).

Appl: YZ250 '05-'19; '07-'15 WR450F; '07-'14 WR250F & '06-'07 YZ450f

YZ-TB223-MB	23.5mm offset	(Blue)
YZ-TB624-BA	22mm offset	(Black)
YZ-TB624-MB	22mm offset	(Blue)

Appl: '08-'09 YZ450f; '06-'11 YZ250f; '06-'19 YZ125
YZ-TB612-BA 22mm offset (Black)



KXF250/450 Triple Clamp Sets, 20 & 21.5mm Offset

Designed for minimum weight, maximum strength and torsional rigidity. Use with Ride Eng. One-Piece Bar Mounts to prevent handlebar twist while retaining the rubber-mounted system that lessens hand fatigue. (saves 5oz). Now all Rideng KXF triple clamps are stabilizer ready (use bracket: KX-SHSB0-00 & dampener: MX-HPSD9-00)

Appl: KX250F '06-'12

KX-TBS20-GN (green)	21.5mm offset
KX-TBS20-BA (black)	21.5mm offset

Appl: KX450F '06-'12

KX-TBK20-MB (blue)	21.5mm offset
KX-TBK20-GN (green)	21.5mm offset
KX-TBK20-BA (black)	21.5mm offset
KX-TBK40-GN (green)	20mm offset
KX-TBK40-BA (black)	20mm offset

Appl: KX250F & KX450F '13-'18

KX-TBK20-G3 (green)	21.5mm offset	KX-TBK40-G3 (green)	20mm offset
KX-TBK20-B3 (black)	21.5mm offset	KX-TBK40-B3 (black)	20mm offset

Appl: KX450F '19

KX-TBK20-G9 (green)	21.5mm offset	KX-TBK20-B9 (black)	21.5mm offset
---------------------	---------------	---------------------	---------------

Included in kit: Top clamp, Bottom clamp, pressed in stem and lower bearing.



SHOWA STEERING DAMPENER

Now the Honda HPSD is available from Ride Engineering.

MX-HPSD9-00 (20mm piston, MX use)
MX-HPSD1-10 (24mm piston, better off-road use)



Ride Eng. CR/CRF Triple Clamps

Ride Eng. triple clamps improve handling, remove weight and increase strength. They retain the factory rubber-mount system for less hand fatigue and accept the factory Honda steering stabilizer. Fit '04 and up front no. plates. CRX models require Headlight/Odo Kit (CR-XHB00-KT).

Appl: CR125/250 - CRF250/450 '02-'08; '09 CRF250

CR-BTB2R-RA red 22mm Offset

CR-BTB2R-BA black 22mm Offset

Appl: '09-'12 CRF450R & '10-'13 CRF250R

CR-BTB09-RA red CR-BTB09-BA black 21mm Offset

CR-BTB29-RA red CR-BTB29-BA black 22mm Offset

CR-BTB00-RA red CR-BTB00-BA black 20mm Offset

Appl: '13-'19 CRF450R & '14-'19 CRF250R

CR-BTB03-RA red CR-BTB03-BA black 20mm Offset

CR-BTB14-RA red CR-BTB14-BA black 21mm Offset

CR-BTB23-RA red CR-BTB23-BA black 22mm Offset



Steering Head Stab. Brackets

Install a Showa dampener behind the number plate of your KTM; YZF; KXF & RMZ!

Appl: KX250F/450F 08-18 KX-SHSB0-00

Appl: YZ450F 10-13 YZ-SHSB4-00

YZ/FX250F/450F 14-18 & YZ125/250 05-18

YZ-SHSB0-00

Appl: KTM 12.5-18.5 FE; 13-19 SX/XC/XC-F

& 14-19 HUSKY all exc 85 KT-SHSB3-KT

Appl: KTM 00-12 SX/XC/XC-F

KT-SHSB0-KT

13-19 KTM fender bracket only KT-SHLSB-03

Appl: RMZ450 13-17 RM-SHSB3-00

Appl: RMZ250 13-19 & RM-SHSB0-00

RMZ450 18-19



Ride Eng. KTM Triple Clamp Sets-90mm Span

Solid mount design.

Appl: KTM '03-'12 SX/XC all; '04-'13 EXC/XCW

(must be used with stock bar mounts)

KT-BTB40-BA (black) 20.5mm offset

KT-BTB40-GE (orange) 20.5mm offset

KT-BTB19-GE (orange) 19mm offset

Appl: 2013-19 KTM SX/XC all & 14-17 EXC/XCW

KT-BTB43-GE (orange) 20.5mm offset (Scott's Dampener)

(All rubber mount KTM clamps Polyurethane Cones Incl. Must use with Rideng bar mount: KX-BBM00-CA)

New Rubber Mount KTM/HUSKY Clamps-100mm

Designed for vibration absorption and to flex with forks.

Appl: 2013-19 KTM SX/XC all & 14-19 EXC/XC90

14-19 HUSKY TC 125/250; TE 250/300; FC 250/450; FE 250/350/501

KT-BTB44-GE (orange) KT-BTB44-BA (black) 20.5mm offset

KT-BTB14-GE (orange) 19mm offset

KT-BTB24-GE (orange) 22mm KT-BTB24-BA (black) 22mm

KT-BTB34-GE (orange) 23mm KT-BTB34-BA (black) 23mm

Top Clamp Only (22mm Offset) 2010-2019 KTM All

KT-BTC00-BA (black) KT-BTC00-GE (orange)



Ride Eng. RM/RMZ Top & Bottom Clamp Sets

We've re-designed our RM/RMZ triple clamp set to fit the old and the new front fender so that one part number covers all applications! Weight savings is 7.5 oz lighter than stock.

Appl: RM125/250/450z '03-'09 & RM250z '07-'12

RM-BTB20-RA (red) 22mm offset

RM-BTB20-BA (black) 22mm offset

RM-BTB40-RA (red) 20mm offset

RM-BTB40-BA (black) 20mm offset

Appl: RM450z '10-'12

RM-BTB41-RA (red) 20mm offset

RM-BTB41-BA (black) 20mm offset

Appl: RM450z 2013-19 & RM250z 2016-19

RM-BTB43-RA (red) 20mm offset

RM-BTB43-BA (black) 20mm offset

RM-BTBN3-RA (red) 22mm offset

RM-BTB43-MB (blue) 20mm offset

RM-BTBN3-MB (blue) 22mm offset

Appl: RM250z 2013-15

RM-BTB23-RA (red) 22mm offset

RM-BTB23-BA (black) 22mm offset

SUSPENSION LINKS



KTM/HUSKY PERFORMANCE LINK

Improves handling through better tracking in off-camber or bermless turns, reduce wallowing in whoops and keeps the back end more planted in breaking bumps. It comes complete with bearings and seals. Recommended sag is 100-106mm. (lowers 6-7mm)

Appl: '12-'14 SX150/250; XC;XC-F all & '11-'14 SXF250/350/450 & HUSKY '14 TC 125/250; TE 250/300; FC 250/450; FE 250/350/501
KT-LKA44-GE (ORANGE) KT-LKA44-BA (BLACK)
'16-'19 SX125/150 SXF/XC-F 250/350/450; '17-'19 SX250 & '15.5-'18.5FE HUSKY '16-'19 TC125 & FC250/350/450; '17-'19 TC250
'17-'19 TE150/250/300; '17-'19 FE250/350/450/501
KT-LKA49-GE (ORANGE) KT-LKA49-BA (BLACK)

HUSKY LOWERING LINK

Appl: '14-'16 FE250/350/450/501 (1 1/4" drop)
Appl: '17-'18 FE250/350/450/501 (3/4" drop)
Appl: '17-'18 TE150/250/300 (3/4" drop)
KT-LKA49-BA (BLACK)

CRF LOWERING LINK

It's no secret the '09-'12 Honda chassis is very front end biased so we made a suspension link to lower the back end 8-10mm to help balance out this bike. Recommended sag is 105-108mm. The 2013+ CRF450R is balanced so our combo outer link and center knuckle keeps the ride height close to stock (2mm drop) while improving the suspension action and handling. Recommended sag is 102-106mm. (full linkage shown, Lowering link is outer arm only)

'09-'10 & '16 CR450F & '10-'11 CR250F CR-LKA47-RA (RED)
11-'15 CR450F & '12-'17 CR250F CR-LKA45-RA (RED)



CRF PULL RODS

Ride Eng's new longer billet pull rods are a key ingredient to balancing out the 2017's suspension, increasing traction on acceleration, utilizing all the travel and improving handling. Recommended sag with the Rideng Pull Rods is 102-104mm.

'17-'18 CRF450R & CRF450RX CR-DLA46-RA (RED)
& 2018 CRF250R



YZ/YZF PERFORMANCE LINK

Ride's YZF suspension link lowers the back of the motorcycle 8-10mm (2-Stroke link 5mm). Our link improves handling mid-corner and balances out the bike. Less effort is required to initiate turn-in and it keeps the bike tracking straight in whoops allowing the rider to be more aggressive. Recommended sag with the Rideng Link is 102-105mm.

'09-'19 YZ250F/450F; YZ250FX/450FX '15-'19; WR450 '16-'19
YZ-LKA44-BA (BLACK)
'05-'19 YZ125/250 YZ-LKA46-BA (BLACK)

RMZ PERFORMANCE LINK

Our Suzuki link stiffens the initial part of the stroke for better control which helps it transition into the high speed circuit better for smoother shock action. The bike also becomes balance with less weight bias on the front wheel. Recommended sag for '13-'17 is 102-104mm, '18 is 108mm.

Appl: '13-'17 RM450Z RM-LKA33-RA (RED)
'18-'19 RM450Z RM-LKA36-MB (BLUE)





KXF PERFORMACNE LINK

Ride's KXF link lowers the 2009 bikes 10mm and the 2010-15 bikes, 5mm. It comes complete with bearings and seals. The link improves handling in flat or off-camber turns, driving forward instead of sliding sideways. Less effort is required to initiate turn-in and it helps keep the bike going straight in whoops. It also keeps the back end planted in breaking bumps. The recommended sag with the Rideng Link is 100-105mm. 2017 Link lowers rear 8mm.

Appl: '09-'15 KX450F	KX-LKA35-GN (GREEN)
'09-'16 KX250F	KX-LKA31-GN (GREEN)
'17-'18 KX450F	KX-LKA37-GN (GREEN)
'17-'18 KX250F	KX-LKA32-GN (GREEN)

ENGINE

NEW! Machined Clutch Cable Holder CRF450R/X

Eliminates all flex and provides a better feel at the lever.

Appl: 2017-19 CRF450R/RX

CR-CCH00-BA



2 STROKE or 4 STROKE TACH/HOUR METER

Mounting bracket included.



Appl: YZ/YZF/WR/WRF/FX all - CR all - KX all - RM all -
KTM SX/XC/XC-W all - HUSKY TC/TE/TX all

MX-HM000-BK

Appl: CRF/CRX all - KXF all - RMZ all -
KTM SXF/XC-F/EXC-F all - HUSKY FC/FE/FX all

MX-HM004-BK

Billet Ignition & Timing Plug Kits - Made from aerospace quality aluminum. Precision machined for better thread engagement. Easily removed with a Quarter or Motion Pro ignition plug tool.

Appl: 1998-2005 YZF all; 2006-2013 YZ250F/WR250X/R & 1999-2002 WR all

YZ-BIT00-RA (red) YZ-BIT00-MB (yz blue)

Appl: 2006-2009 YZ450F; 2003-2014 WR all; 2015 WR450 & YFZ450 QUAD 2004-2008

YZ-BIT06-RA (red) YZ-BIT06-MB (yz blue) YZ-BIT06-BA (black)

Appl: 2010-18 YZ450F; 2014-17 YZ250F; 2015-18 WR250/250FX; 450WR/FX 2016-18

YZ-BIT10-RA (red) YZ-BIT10-MB (yz blue)

Appl: 2004-2010 KX250F & 2004-2006 RM250Z

RX-BIT00-RA (red)

Appl: 2006-2019 KX450F & 2011-2019 KX250F
KX-BIT00-GN (green) KX-BIT00-RA (red)

Appl: 2002-2016 CRF150/250/450 & CRF250/450X

CR-BIT00-RA (red) CR-BIT00-BA (black)

Appl: 2005-2019 RMZ450 & 2007-2019 RMZ250
RZ-BIT00-RA (red) RZ-BIT00-MB (blue)

Appl: 2007-2012 KTM450F & 2011-19 KTM250F/350F

KT-BIP00-GE (orange) (Ignition Plug Only)

KT-BIP00-BA (black)

2002-2019 CRF150/250/450R/RX (Ignition Plug Only)

CR-BIP00-RA (red)

CR-BIP00-BA (black)





Billet Fill Plugs

Flush mount design eliminates the risk of oil loss from a punctured or cracked plastic plug. Precision machined for better thread engagement. Easily removed with a Quarter.

Appl: YZ/WR/YZF/WRX/FX all & CR/CRF all –TRX/YFZ Quad

MX-BFP00-RA (RED) MX-BFP00-MB (YZ BLUE) MX-BFP00-BA (BLACK)

Appl: RM 125/250/450Z '03-'19 RM-BFP00-RA (RED) RM-BFP00-MB (BLUE)
RM250Z '07-'19

Appl: KX 250/450F '05-'19 RMZ250 '04-'06
KX250F '04-'19

RX-BFP00-RA (RED)

RX-BFP00-GN (GREEN)

Appl: KTM 125/250/250F/300/450F/525F '04-'19

KT-BFP00-GE (ORANGE)

Appl: KTM 125/250/250F/300/450F/525F '04-'19

KT-BFP00-BA (BLACK)

Husky 125/250/250F/300/350F/450F '14-'19

Billet Engine Oil Dip Stick

Extremely light weight design is a great replacement for the stock plastic/steel one.

Appl: CRF450R '09-'16 & CRF150 ALL

CR-DS45R-RA (RED)

CRF450X '05-'18

CR-DS45X-RA (RED)

CRF450R '17-'19 & CRF450RX

CR-DS47R-RA (RED)

CRF250R '10-'17

CR-DS251-RA (RED)

CONTROLS



Billet Engine Kill/Starter Switch

Replaces the stock engine kill switch on all off-road motorcycles. Integrated into the clamp that holds the clutch lever or front brake master-cylinder; this item eliminates one component completely off the motorcycle. For those that ride electric start motorcycles, a second switch can be added to eliminate the stock start button! We recommend this application for the CRX-WRF-KLX-XR & all electric start KTMs.

Appl: YZ/YZF/WRF/FX all - CR/CRF/CRX all

KX/KXF/KLX all – RM/RMZ all – KTM all (Brembo only)

MX-KS00C-AS (silver) MX-KS00B-AS (black)

CRF450r '09-'16 & CRF250r '10-'16 kill button requires LED; KX450F '12-'19

KX250F 14-19 & RMZ450 15-19 & RMZ250 16-19 launch control requires LED

MX-LED00-AS (red)

Remote Compression Adjusters Patent no. D0515984

Ride Eng. has created a product to make adjusting your fork compression simple with no external tools required. Allen wrench & mounting hardware included.

Appl: YZ125/250/YZ250F/450F '05-'19; WR250/250FX '15-'19; WR450/450FX '12-'19;

KX450F '08-'12 & CRF450R '09-'12

MX-CAK00-RA (KYB forks) RED

Raptor Titanium Footpegs

Ride Engineering has added the original Raptor titanium footpeg to its line of high quality motocross products. These pegs are hand made in the UK using the highest grade of 6AL-V4 titanium. At 57mm wide they still weigh in under 12oz a set with stainless steel springs. That's between 4-7 oz savings.

Appl: SX125/150 - SXF/XC-F 250/350/450 2016-2019; Factory Edition 2015.5-2018.5; SX250/EXC/EXC-F all 17-19;

Husqvarna TC/FC/TE/TX/FX 16-18

KT-RX016-AS

Appl: SX125/150 - SXF/XC-F 250/350/450 03-15; Factory Edition 2012.5-2014.5; SX250/EXC/EXC-F all 2004-2016 ;

Husqvarna TC/FC/TE 14-15; SX65/85/TC65/85 2004-2019

KT-RX001-AS

Raptor Titanium Footpegs

Appl: CRF150R/250R/450R/450RX 02-19; CR125/250 02-07

MX-RX002-AS

Appl:

YZ85/125/250/250X/250F/450F/250FX/450FX/WR250F/450F 99 – 19

YZ-RX003-AS

Appl: KX250/250F/

450F 2007 – 2019

KX-RX006-AS

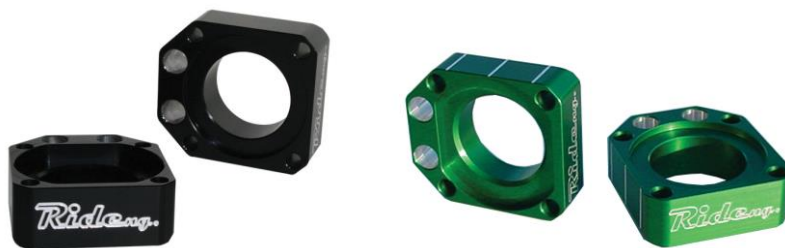
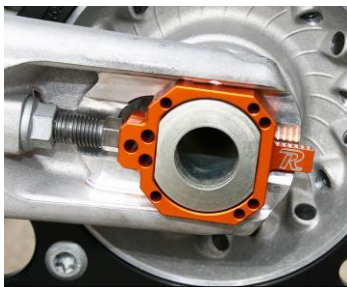
Appl: RM250Z/450Z

2010-2019

RM-RX010-AS



WHEELS



Billet Axle Blocks

Precisely machined for a better swing arm fit and more accurate chain alignment. 6mm longer than stock keeps chain adjustment bolts less extended. Provides two M8 hex nuts to "double lock" adjustment bolts and keep them from loosening.

Appl: all 2002-2008 YZF's; 2002-2019 YZ/WR/FX (incl. WRX) (ex YZ85) YZ-BAB00-MB (blue) YZ-BAB00-RA (red)
all 2009-11 YZ250F & 2009 YZ450F (except YZ85) YZ-BAB09-RA (red)

2010-17 YZ450F; 2012-19 YZ250F

YZ-BAB10-MB (blue)

YZ-BAB10-RA (red)

2009-19 CRF250/450

CR-BAB09-RA (red)

CR-BAB09-BA (black)

Appl: all 2003-2015 KXs/KXFs (except KX85) & 2004-2019 RMZ250/450

RX-BAB00-RA (red)

RX-BAB00-MB (blue) RX-BAB00-BA (black)

RX-BAB00-GN (green)

Appl: KX450F 2016-19 RX-BAB16-RA (red) RX-BAB16-MB (blue) RX-BAB16-BA (black) RX-BAB16-GN (green)
& KX250F 2017-19

Appl: 2013-2019 KTM SXF/XC 150/250/250F/350F/450F & 2012.5 FE (25mm axle only) KT-BAB00-GE (orange)

KT-BAB00-BA (black)

CRF450 Axle, Nut & Washer Kit (required with KTM axle blocks)

MX-AXL25-KT



Ride Eng. Wheel Spacers

Ride Engineering locking wheel spacers are designed to stay put when re-installing your wheels after those dreaded tire changes. PAIR Front or Rear.

CR-WS00F-RA (RED), front Appl: CR125, CR250, CRF250, CRF450 02-19

CR-WS00R-RA (RED), rear Appl: CR125, CR250, CRF250, CRF450 02-19

YZ-WS14F-MB (BLUE), front Appl: YZ250F/450F/250FX/450FX 14-19

YZ-WS14F-RA (RED), front Appl: YZ250F/450F/250FX/450FX 14-19

YZ-WS07F-MB (BLUE), front Appl: YZ125/250 08-19, YZ250F 07-13, YZ450F 08-13

YZ-WS07F-RA (RED), front Appl: YZ125/250 08-19, YZ250F 07-13, YZ450F 08-13

YZ-WS00F-RA (RED), front Appl: YZ/YZF All (except 85 & '07 250F) 02-07

YZ-WS00R-MB (BLUE), rear Appl: YZ/FX/WRF 03-18 (ex. 85) / YZF All 03-08

YZ-WS09R-MB (BLUE), rear Appl: YZF250/450 09-18

YZ-WS00R-RA (RED), rear Appl: YZ/FX/WRF 03-18 (ex. 85) / YZF All 03-08

YZ-WS09R-RA (RED), rear Appl: YZF250/450 09-18

KX-WS00F-GN (GREEN), front Appl: KX250, KX250F, KX450F 06-18

KX-WS00R-GN (GREEN), rear Appl: KX125, KX250, KX250F, KX450F 03-18

RZ-WS00F-RA (RED), front Appl: RMZ450 05-16 & RM250Z 07-19

RZ-WS00R-RA (RED), rear Appl: RMZ450 05-16 & RM250Z 07-19

Ride Eng. Valve Cap & Rim-lock Spacer Kit

Kit includes: 2 billet valve caps, 2 rim-lock spacers (each sized for the front and rear rim diameter), 2 hex flange nuts to keep the rim-lock spacers secure and 2 small o-rings to help seat the valve caps.

MX-VCS00-GN (ORANGE)

Appl: universal

MX-VCS00-GN (GREEN)

Appl: universal

MX-VCS00-MB (BLUE)

Appl: universal

MX-VCS00-RA (RED)

Appl: universal

MX-VCS00-BA (BLACK)

Appl: universal

