

EFX[®]

**SOUND SYSTEM
HARDWARE**

 **SCOSCHE**[®]

NEW FOR 2016



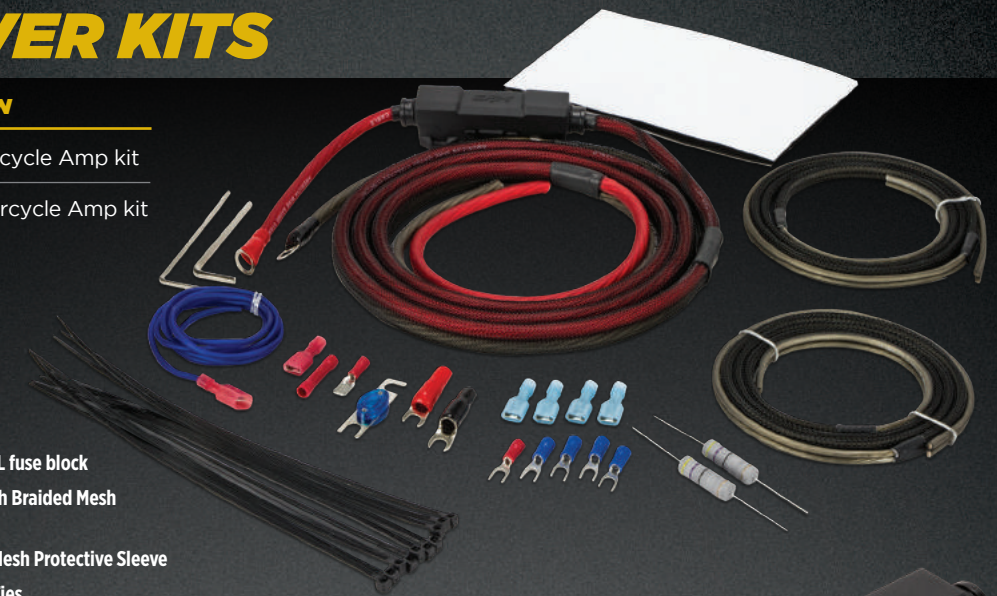
SOUND SYSTEM HARDWARE

- NEW FOR 2016 1
- AMP POWER/INSTALLATION KITS & STIFFENING CAPACITOR 2-3
- POWER & SPEAKER WIRE 4
- FUSE BLOCKS & HOLDERS 5
- DISTRIBUTION BLOCKS 6-8
- BATTERY TERMINALS 9
- MINI-ANL FUSES & ULTIMATE GROUND TERMINALS 10
- ELITE BRAIDED MULTI-CORE INTERCONNECTS 11
- REFERENCE MULTI-CORE INTERCONNECTS 12
- PERFORMANCE TWISTED INTERCONNECTS 13
- CORE TWISTED INTERCONNECTS 14
- CORE COAXIAL INTERCONNECTS 15
- PRODUCT DIRECTORY 16-19



AMP POWER KITS

MODEL #	DESCRIPTION
EFXAKCM8B	8AWG Motorcycle Amp kit
EFXAKCM10B	10AWG Motorcycle Amp kit



Features:

- 8/10GA Compact Weatherproof Mini-ANL fuse block
- Pre-terminated Power/Ground Cable with Braided Mesh Protective Sleeve
- 16AWG OFC Speaker Wire with Braided Mesh Protective Sleeve
- Includes Connectors, Terminals & Cable Ties

SPEAKER WIRE

MODEL #	DESCRIPTION
EFXS5WC18-12B	5-Wire 18AWG OFC Speaker Cable 12'
EFXS5WC18-20B	5-Wire 18AWG OFC Speaker Cable 20'
EFXS5WC18-250	5-Wire 18AWG OFC Speaker Cable 250' spool

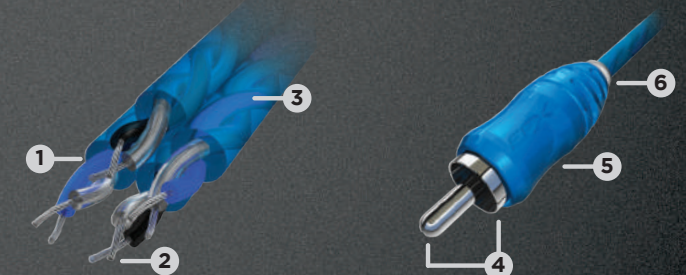


4CH TWISTED INTERCONNECTS

MODEL #	DESCRIPTION
EFXRCT412B	4-Channel Core Twisted RCA interconnect 12'
EFXRCT417B	4-Channel Core Twisted RCA interconnect 17'

WEATHERPROOF FUSE BLOCKS

MODEL #	DESCRIPTION
EFXFB4MWP	4/8GA Weatherproof Mini-ANL Fuse Block
EFXFB8MWP	8/10GA Weatherproof Mini-ANL Fuse Block



- 1 Twisted Pair Construction** for increased noise rejection and enhanced sound quality.
- 2 Flux-Tinned OFC Strands** for optimal signal transfer and corrosion resistance.
- 3 4-Channel Diamond Pattern with Frosted Insulation** for enhanced cable flexibility and minimal cross-section.
- 4 Split-Tip Center Pin and Segmented Shield** for maximum contact and connection reliability.
- 5 Micro Barrel Design with Integrated Strain Relief** for convenient grip and long-term durability.
- 6 Channel Indication Rings** for simple identification.

AMP POWER KITS

Includes:

- 17' Power Cable with 6' Braided Sleeve and Ring Terminal
- 2' Ground Cable with Ultimate Ground Terminal
- 19' Remote Turn-on Wire
- Mini-ANL Fuse Block and Fuse(s)
- Firewall Compression Grommet
- Amp Spade Terminals
- Screws, Connectors & Cable Ties

Features:

- **True American Wire Gauge Oxygen Free Copper** for high current delivery
- **Ultra-Fine Stranding and Frosted Insulation** for superior flexibility
- **Flux-Tinned** for Corrosion Resistance
- **Ultimate Ground Terminal** (Patent Pending) for best contact, reliability and fastest install
- **Compact Mini-ANL Fuse Block** for high power sound systems



0 AWG



4 AWG



8 AWG



10 AWG

RETAIL MODEL #	POLYBAG MODEL #	DESCRIPTION
EFXAKC0	EFXAKC0B	0 AWG OFC Amp Power Kit, 300A dual mini-ANL (2x150A), ultra-flex fine strand, ultimate ground, retail double blister or printed polybag
EFXAKC4	EFXAKC4B	4 AWG OFC Amp Power Kit, 100A mini-ANL, ultra-flex fine strand, ultimate ground, retail double blister or printed polybag
EFXAKC8	EFXAKC8B	8 AWG OFC Amp Power Kit, 60A mini-ANL, ultra-flex fine strand, ultimate ground, retail double blister or printed polybag
EFXAKC10	EFXAKC10B	10 AWG OFC Amp Power Kit, 30A mini-ANL, ultra-flex fine strand, ultimate ground, retail double blister or printed polybag

CORE AMP INSTALLATION KITS

Includes:

- 17' Power Cable with Ring Terminal
- 2' Ground Cable with Ultimate Ground Terminal
- 17' Remote Turn-On Wire
- 17' Core Coaxial Interconnect
- 6' Split-loom Tubing
- Mini-ANL Fuse Holder and Fuse
- Firewall Grommet
- Amp Spade Terminals
- Screws, Connectors & Cable Ties

Features:

- **True American Wire Gauge Oxygen Free Copper** for high current delivery
- **Fine Stranding with Soft-Touch Insulation** for enhanced flexibility
- **Ultimate Ground Terminal** (Patent Pending) for best contact, reliability and fastest install
- **Compact Mini-ANL Fuse Holder** for high power sound systems



4 AWG



8 AWG

RETAIL MODEL #	POLYBAG MODEL #	DESCRIPTION
EFXCAKCR4	EFXCAKC4RB	4 AWG Core OFC Amp Installation Kit; 100A mini-ANL, fine strand soft-touch, ultimate ground, split-tip coax RCA, retail double blister or printed polybag
EFXCAKCR8	EFXCAKC8RB	8 AWG Core OFC Amp Installation Kit; 60A mini-ANL, fine strand soft-touch, ultimate ground, split-tip coax RCA, retail double blister or printed polybag

STIFFENING CAPACITOR

MODEL #	DESCRIPTION
EFXDCAPI	True 1-Farad Capacitor; yellow 3-digit LED display, post-style terminals, retail double blister



- **True 1-Farad Stiffening Capacitor** for systems up to 2000W RMS
- **Digital Display** for system voltage monitoring
- **Low-profile Post Terminals** for installation flexibility
- **Polycarbonate Cover** for protection and durability



POWER WIRE



MODEL #	DESCRIPTION
EFXPWCR0-50	0 AWG OFC Ultra-flex Power Wire; flux-tinned fine strand, frosted red, 50' spool
EFXPWCBLO-50	0 AWG OFC Ultra-flex Power Wire; flux-tinned fine strand, frosted blue, 50' spool
EFXPWCB0-50	0 AWG OFC Ultra-flex Power Wire; flux-tinned fine strand, frosted black, 50' spool
EFXPWCR4-125	4 AWG OFC Ultra-flex Power Wire; flux-tinned fine strand, frosted red, 125' spool
EFXPWCBL4-125	4 AWG OFC Ultra-flex Power Wire; flux-tinned fine strand, frosted blue, 125' spool
EFXPWCB4-125	4 AWG OFC Ultra-flex Power Wire; flux-tinned fine strand, frosted black, 125' spool
EFXPWCR8-250	8 AWG OFC Ultra-flex Power Wire; flux-tinned fine strand, frosted red, 250' spool
EFXPWCBL8-250	8 AWG OFC Ultra-flex Power Wire; flux-tinned fine strand, frosted blue, 250' spool
EFXPWCB8-250	8 AWG OFC Ultra-flex Power Wire; flux-tinned fine strand, frosted black, 250' spool

SPEAKER WIRE



MODEL #	DESCRIPTION
EFXSWC12-17	12 AWG OFC Ultra-flex Speaker Wire; flux-tinned fine strand, frosted black, 17' retail mini-spool with tab
EFXSWC12-250	12 AWG OFC Ultra-flex Speaker Wire; flux-tinned fine strand, frosted black, 250' spool
EFXSWC14-250	14 AWG OFC Ultra-flex Speaker Wire; flux-tinned fine strand, frosted black, 250' spool
EFXSWC16-25	16 AWG OFC Ultra-flex Speaker Wire; flux-tinned fine strand, frosted black, 25' retail mini-spool with tab
EFXSWC16-500	16 AWG OFC Ultra-flex Speaker Wire; flux-tinned fine strand, frosted black, 500' spool
EFXSWC18-500	18 AWG OFC Ultra-flex Speaker Wire; flux-tinned fine strand, frosted black, 500' spool
EFXS9WC18-12B	9-Wire 18 AWG OFC Ultra-flex Speaker Cable; 4CH+Rem with EIA standard colors, frosted clear, 12' printed polybag
EFXS9WC18-20B	9-Wire 18 AWG OFC Ultra-flex Speaker Cable; 4CH+Rem with EIA standard colors, frosted clear, 20' printed polybag
EFXS9WC18-250	9-Wire 18 AWG OFC Ultra-flex Speaker Cable; 4CH+Rem with EIA standard colors, frosted clear, 250' spool

FUSE BLOCKS & HOLDERS



0/4GA DUAL MINI-ANL FUSE BLOCK

MODEL #	DESCRIPTION
EFXFBDM0	0/4GA Dual Mini-ANL Fuse Block; retail double blister



4/8GA MINI-ANL FUSE BLOCK

MODEL #	DESCRIPTION
EFXFBM4	4/8GA Mini-ANL Fuse Block; retail double blister



8/10GA MINI-ANL FUSE BLOCK

MODEL #	DESCRIPTION
EFXFBM8	8/10GA Mini-ANL Fuse Block; retail double blister

CORE FUSE HOLDERS

0/4GA CORE DUAL MINI-ANL FUSE HOLDER

MODEL #	DESCRIPTION
EFXCFHDM0	0/4GA Dual Mini-ANL Fuse Holder; cylinder type, retail single blister



4/8GA CORE MINI-ANL FUSE HOLDER

MODEL #	DESCRIPTION
EFXCFHM4	4/8GA Mini-ANL Fuse Holder; cylinder type, retail single blister



4/8GA CORE AGU FUSE HOLDER

MODEL #	DESCRIPTION
EFXCFHG4	4/8GA AGU Fuse Holder; cylinder type, retail single blister



0/4GA CORE WAFER/ANL FUSE HOLDER

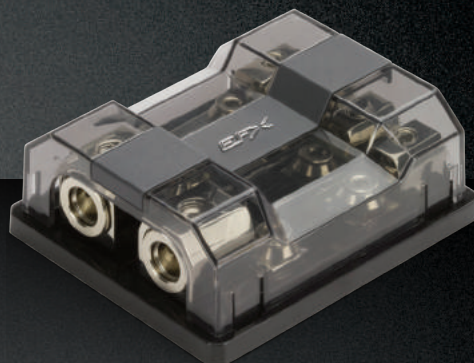
MODEL #	DESCRIPTION
EFXCFHW	0/4GA Core Wafer/ANL Fuse Holder; ring post type, retail single blister



DISTRIBUTION BLOCKS

0/4-4/8GA QUAD MINI-ANL UNIVERSAL DISTRIBUTION BLOCK

MODEL #	DESCRIPTION
EFXFDBUQM	0/4-4/8GA Quad Universal Mini-ANL Distribution Block; (1) 0/4GA to (4) 4/8GA or (2) 0/4GA to 2x(2) 4/8GA, dual power/ground combo block w/gnd plate, retail double blister



1-In/4-Out Power



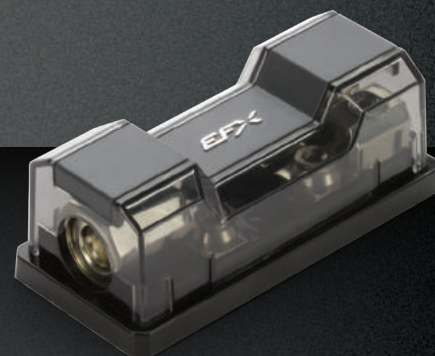
2-In/4-Out Power



Dual Power/Ground

0/4-4/8GA DUAL MINI-ANL UNIVERSAL DISTRIBUTION BLOCK

MODEL #	DESCRIPTION
EFXFDBUDM	0/4-4/8GA Dual Universal Mini-ANL Distribution Block; (1) 0/4GA to (2) 4/8GA, dual ground w/gnd plate, retail double blister



Dual Power



Dual Ground

CORE DISTRIBUTION BLOCKS

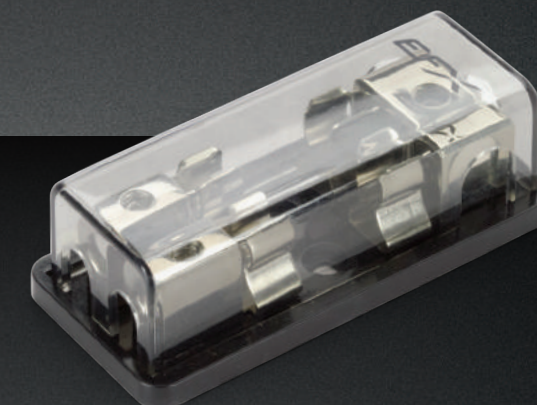
4-8GA CORE QUAD AGU DISTRIBUTION BLOCK

MODEL #	DESCRIPTION
EFXCFDBQG	4-8GA Core Quad AGU Distribution Block; (3) 4GA to (4) 8GA, retail single blister



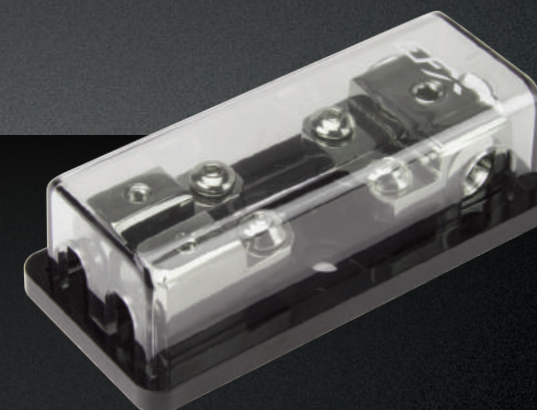
4-8GA CORE DUAL AGU DISTRIBUTION BLOCK

MODEL #	DESCRIPTION
EFXCFDBDG	4-8GA Core Dual AGU Distribution Block; (1) 4GA 3-way to (2) 8GA, retail single blister



4-8GA CORE DUAL MINI-ANL DISTRIBUTION BLOCK

MODEL #	DESCRIPTION
EFXCFDBDM	4-8GA Core Dual Mini-ANL Distribution Block; (1) 4GA 3-way to (2) 8GA, retail single blister



DISTRIBUTION BLOCKS

0/4-4/8GA GROUND DISTRIBUTION BLOCK

MODEL #	DESCRIPTION
EFXGDB04	0/4-4/8GA Ground Distribution Block; (1) 0/4GA to (4) 4/8GA, retail double blister



4-8GA GROUND DISTRIBUTION BLOCK

MODEL #	DESCRIPTION
EFXGDB48	4-8GA Ground Distribution Block; (1) 4GA to (4) 8GA, retail double blister



CORE DISTRIBUTION BLOCKS

0-4GA CORE GROUND DISTRIBUTION BLOCK

MODEL #	DESCRIPTION
EFXCGDB04	0-4GA Core Ground Distribution Block; (2) 0GA to (3) 4GA; retail single blister



4-8GA CORE GROUND DISTRIBUTION BLOCK

MODEL #	DESCRIPTION
EFXCGDB48	(1)4GA to (4)8GA Ground Distribution Block; retail single blister



BATTERY TERMINALS



0/4/8GA UNIVERSAL BATTERY TERMINAL W/CHARGE POST

MODEL #	DESCRIPTION
EFXBTCUD08	0/4/8GA Universal Battery Terminal; (2) 0/4GA & (2) 8GA outputs, charging/jump-start post, +/- polarity markers, retail double blister

0/4/8GA CORE UNIVERSAL BATTERY TERMINAL

MODEL #	DESCRIPTION
EFXCBT048	0/4/8GA Core Universal Battery Terminal; (1) 0GA, (1) 4GA & (2) 8GA outputs; clamp-type, retail single blister



MINI-ANL FUSES



MODEL #	DESCRIPTION
EFXF30M	30 Amp Mini-ANL Fuses; green polycarbonate, 2pcs, retail single blister
EFXF40M	40 Amp Mini-ANL Fuses; orange polycarbonate, 2pcs, retail single blister
EFXF50M	50 Amp Mini-ANL Fuses; red polycarbonate, 2pcs, retail single blister
EFXF60M	60 Amp Mini-ANL Fuses; blue polycarbonate, 2pcs, retail single blister
EFXF80M	80 Amp Mini-ANL Fuses; clear polycarbonate, 2pcs, retail single blister
EFXF100M	100 Amp Mini-ANL Fuses; black bakelite, 2pcs, retail single blister
EFXF125M	125 Amp Mini-ANL Fuses; black bakelite, 2pcs, retail single blister
EFXF150M	150 Amp Mini-ANL Fuses; black bakelite, 2pcs, retail single blister
EFXF175M	175 Amp Mini-ANL Fuses; black bakelite, 2pcs, retail single blister
EFXF200M	200 Amp Mini-ANL Fuses; black bakelite, 2pcs, retail single blister

*Select sizes also available in 10pc bulk packs

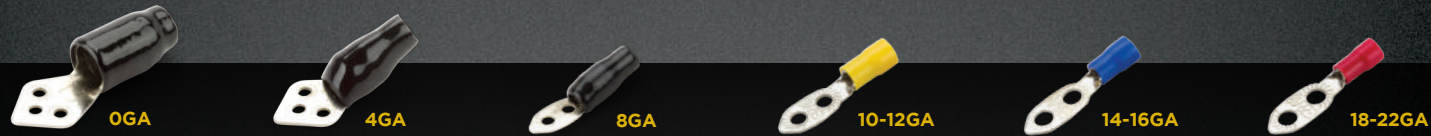
Compact High-current Design
for maximum power delivery

Optimized Contacts and Housing Profile
for convenient and secure installation



Easy in/out design

ULTIMATE GROUND TERMINALS



RETAIL MODEL #	POLYBAG MODEL #	DESCRIPTION
EFXUGT0	EFXUGT0B10	0GA Ultimate Ground Terminal; incl. self-tapping screws, retail double blister or 10pcs, bulk polybag
EFXUGT4	EFXUGT4B25	4GA Ultimate Ground Terminal; incl. self-tapping screws, retail double blister or 25pcs, bulk polybag
EFXUGT8	EFXUGT8B25	8GA Ultimate Ground Terminal; incl. self-tapping screws, retail double blister or 25pcs, bulk polybag
	UGTY-100	10-12GA Ultimate Ground Terminal; yellow, 100pcs bulk polybag
	UGTB-100	14-16GA Ultimate Ground Terminal; blue, 100pcs bulk polybag
	UGTR-100	18-22GA Ultimate Ground Terminal; red, 100pcs bulk polybag

Fastest Install
Uses standard self-tapping screws

Most Reliable
Inherently secure interlocking design

Best Power Delivery
Enables shortest ground with maximum contact



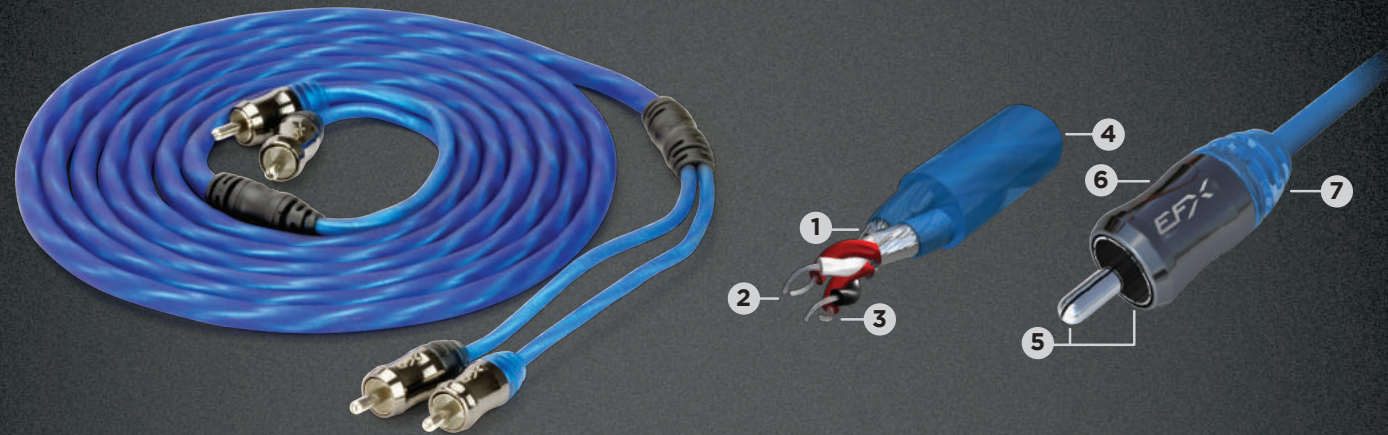
ELITE BRAIDED MULTI-CORE INTERCONNECTS



MODEL #	DESCRIPTION
EFXRE3	3' Elite Braided Litz Multi-Core RCA Cable; mesh jacket, Rh/machined ends, retail window box
EFXRE6	6' Elite Braided Litz Multi-Core RCA Cable; mesh jacket, Rh/machined ends, retail window box
EFXRE9	9' Elite Braided Litz Multi-Core RCA Cable; mesh jacket, Rh/machined ends, retail window box
EFXRE12	12' Elite Braided Litz Multi-Core RCA Cable; mesh jacket, Rh/machined ends, retail window box
EFXRE17	17' Elite Braided Litz Multi-Core RCA Cable; mesh jacket, Rh/machined ends, retail window box
EFXRE20	20' Elite Braided Litz Multi-Core RCA Cable; mesh jacket, Rh/machined ends, retail window box
EFXRE25	25' Elite Braided Litz Multi-Core RCA Cable; mesh jacket, Rh/machined ends, retail window box
EFXRE1M2F	1M-2F Elite Braided Litz Multi-Core RCA Y-Adapter; mesh jacket, Rh/machined ends, retail window box
EFXRE1F2M	1F-2M Elite Braided Litz Multi-Core RCA Y-Adapter; mesh jacket, Rh/machined ends, retail window box

- Multi-Gauge Litz Conductor Core**
Individually insulated multiple gauge OFC conductors with optimized impedance for dynamic wide-band response, precise imaging and pure detail.
- Braided Construction**
Dual-opposing ground path design with ideal braided geometry for ultimate noise rejection and signal integrity.
- Rhodium Plated Contacts**
Provides the lowest contact resistance with superior durability for ultimate signal transfer.
- Precision Machined Ends**
Split-tip center pin, segmented shield and contoured barrel assembly for accurate alignment, maximum contact and connection stability.

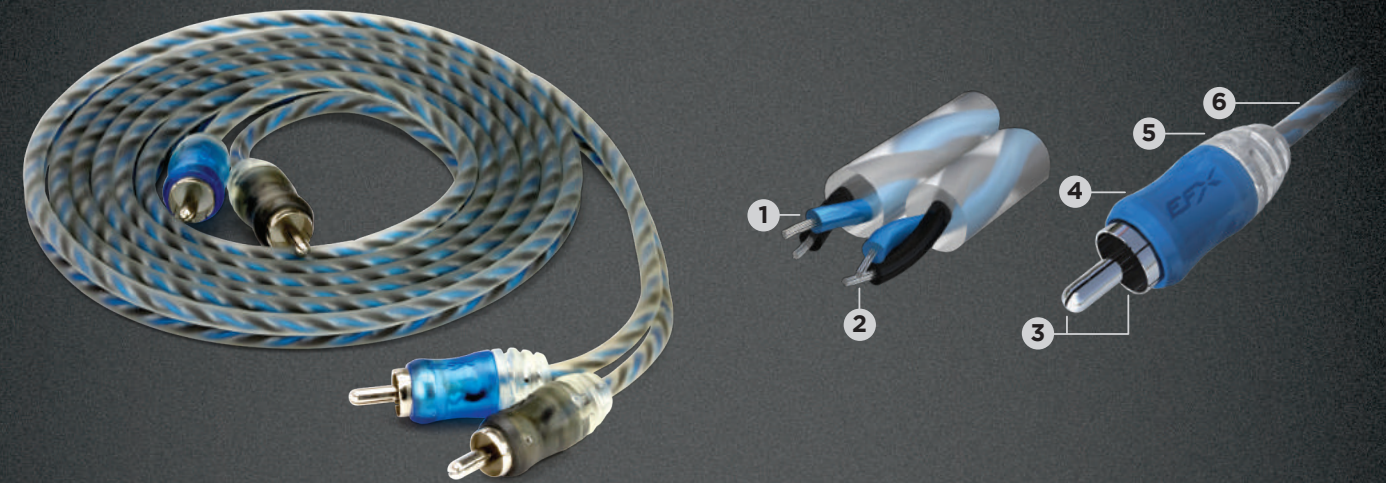
REFERENCE MULTI-CORE INTERCONNECTS



MODEL	DESCRIPTION
EFXRR3	3' Reference Twisted Multi-Core RCA Cable; single jacket, shielded, metal barrel, retail window box
EFXRR6	6' Reference Twisted Multi-Core RCA Cable; single jacket, shielded, metal barrel, retail window box
EFXRR9	9' Reference Twisted Multi-Core RCA Cable; single jacket, shielded, metal barrel, retail window box
EFXRR12	12' Reference Twisted Multi-Core RCA Cable; single jacket, shielded, metal barrel, retail window box
EFXRR17	17' Reference Twisted Multi-Core RCA Cable; single jacket, shielded, metal barrel, retail window box
EFXRR20	20' Reference Twisted Multi-Core RCA Cable; single jacket, shielded, metal barrel, retail window box
EFXRR25	25' Reference Twisted Multi-Core RCA Cable; single jacket, shielded, metal barrel, retail window box
EFXRR1M2F	1M-2F Reference Twisted Multi-Core Y-Adapter; single jacket, shielded, metal barrel, retail window box
EFXRR1F2M	1F-2M Reference Twisted Multi-Core Y-Adapter; single jacket, shielded, metal barrel, retail window box

- 1 Double-Twisted Shielded Construction** for high noise rejection and excellent sound quality.
- 2 Multi-Gauge Conductor Core** for balanced frequency response and clarity.
- 3 Flux-Tinned OFC Strands** for optimal signal transfer and corrosion resistance.
- 4 Single-Molded Jacket** for enhanced cable flexibility and optimized routing.
- 5 Split-Tip Center Pin and Segmented Shield** for maximum contact and connection reliability.
- 6 Metal Micro-Barrel Design** for enhanced precision, durability and installation in tight spaces.
- 7 Molded Strain Relief** for long-term durability.

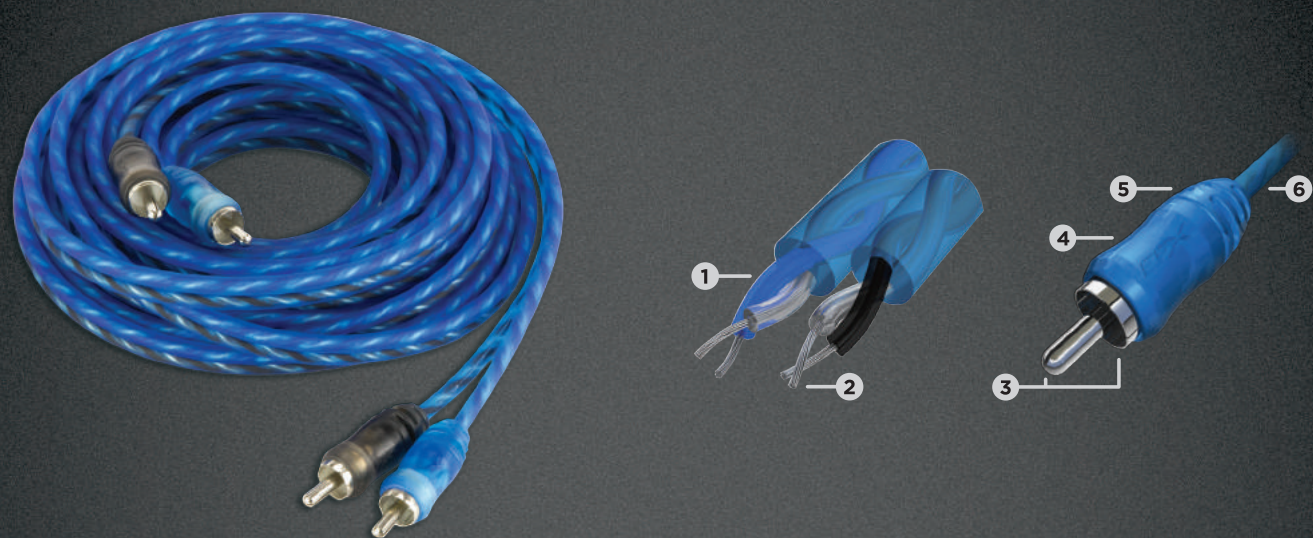
PERFORMANCE TWISTED INTERCONNECTS



MODEL #	DESCRIPTION
EFXRP1	1' Performance Twisted RCA Cable; split-tip, 2-color micro-barrel, retail window box
EFXRP3	3' Performance Twisted RCA Cable; split-tip, 2-color micro-barrel, retail window box
EFXRP6	6' Performance Twisted RCA Cable; split-tip, 2-color micro-barrel, retail window box
EFXRP9	9' Performance Twisted RCA Cable; split-tip, 2-color micro-barrel, retail window box
EFXRP12	12' Performance Twisted RCA Cable; split-tip, 2-color micro-barrel, retail window box
EFXRP17	17' Performance Twisted RCA Cable; split-tip, 2-color micro-barrel, retail window box
EFXRP20	20' Performance Twisted RCA Cable; split-tip, 2-color micro-barrel, retail window box
EFXRP25	25' Performance Twisted RCA Cable; split-tip, 2-color micro-barrel, retail window box
EFXRP1M2F	1M-2F Performance Twisted RCA Y-adapter; split-tip, 2-color micro-barrel, retail window box
EFXRP1F2M	1F-2M Performance Twisted RCA Y-adapter; split-tip, 2-color micro-barrel, retail window box

- 1 Twisted Pair Construction** for increased noise rejection and enhanced sound quality.
- 2 Flux-Tinned OFC Strands** for optimal signal transfer and corrosion resistance.
- 3 Split-Tip Center Pin and Segmented Shield** for maximum contact and connection reliability.
- 4 Micro-Barrel Design** allows installation in tight spaces.
- 5 Integrated Strain Relief** for long term durability.
- 6 Frosted Insulation** for enhanced cable flexibility.

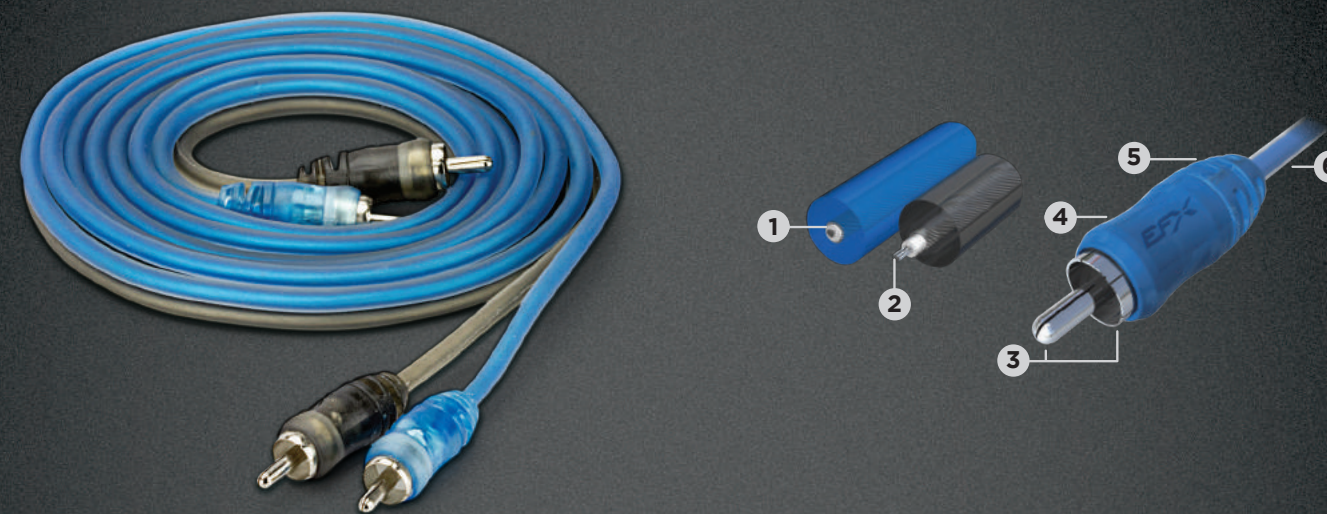
CORE TWISTED INTERCONNECTS



RETAIL MODEL #	POLYBAG MODEL #	DESCRIPTION
EFXRCT3	EFXRCT3B	3' Core Twisted RCA Cable; split-tip, micro-barrel, retail single blister or printed polybag
EFXRCT6	EFXRCT6B	6' Core Twisted RCA Cable; split-tip, micro-barrel, retail single blister or printed polybag
EFXRCT12	EFXRCT12B	12' Core Twisted RCA Cable; split-tip, micro-barrel, retail single blister or printed polybag
EFXRCT17	EFXRCT17B	17' Core Twisted RCA Cable; split-tip, micro-barrel, retail single blister or printed polybag
EFXRCT25	EFXRCT25B	25' Core Twisted RCA Cable; split-tip, micro-barrel, retail single blister or printed polybag
EFXRCT1M2F	EFXRCT1M2FB	1M-2F Core Twisted RCA Y-adapter; split-tip, micro-barrel, retail single blister or printed polybag
EFXRCT1F2M	EFXRCT1F2MB	1F-2M Core Twisted RCA Y-adapter; split-tip, micro-barrel, retail single blister or printed polybag

- 1 Twisted Pair Construction** for increased noise rejection and enhanced sound quality.
- 2 Flux-Tinned OFC Strands** for optimal signal transfer and corrosion resistance.
- 3 Split-Tip Center Pin and Segmented Shield** for maximum contact and connection reliability.
- 4 Micro-Barrel Design** allows installation in tight spaces.
- 5 Integrated Strain Relief** for long term durability.
- 6 Frosted Insulation** for enhanced cable flexibility.

CORE COAXIAL INTERCONNECTS



RETAIL MODEL #	POLYBAG MODEL #	DESCRIPTION
EFXRC1	EFXRC1B	1' Core Coax RCA Cable; split-tip, micro-barrel, retail single blister or printed polybag
EFXRC3	EFXRC3B	3' Core Coax RCA Cable; split-tip, micro-barrel, retail single blister or printed polybag
EFXRC6	EFXRC6B	6' Core Coax RCA Cable; split-tip, micro-barrel, retail single blister or printed polybag
EFXRC9	EFXRC9B	9' Core Coax RCA Cable; split-tip, micro-barrel, retail single blister or printed polybag
EFXRC12	EFXRC12B	12' Core Coax RCA Cable; split-tip, micro-barrel, retail single blister or printed polybag
EFXRC17	EFXRC17B	17' Core Coax RCA Cable; split-tip, micro-barrel, retail single blister or printed polybag
EFXRC20	EFXRC20B	20' Core Coax RCA Cable; split-tip, micro-barrel, retail single blister or printed polybag
EFXRC25	EFXRC25B	25' Core Coax RCA Cable; split-tip, micro-barrel, retail single blister or printed polybag
EFXRC1M2F	EFXRC1M2FB	1M-2F Core Coax RCA Y-adapter; split-tip, micro-barrel, retail single blister or printed polybag
EFXRC1F2M	EFXRC1F2MB	1F-2M Core Coax RCA Y-adapter; split-tip, micro-barrel, retail single blister or printed polybag

- 1 Coaxial Construction** for dependable performance.
- 2 Flux-Tinned OFC Strands** for optimal signal transfer and corrosion resistance.
- 3 Split-Tip Center Pin and Segmented Shield** for maximum contact and connection reliability.
- 4 Micro-Barrel Design** allows installation in tight spaces.
- 5 Integrated Strain Relief** for long term durability.
- 6 Frosted Insulation** for enhanced cable flexibility.



	RETAIL MODEL #	POLYBAG MODEL #	DESCRIPTION
AMP KITS	EFXAKC0	EFXAKC0B	0 AWG OFC Amp Power Kit, 300A dual mini-ANL, ultra-flex fine strand, ultimate ground, retail double blister or bulk printed polybag
	EFXAKC4	EFXAKC4B	4 AWG OFC Amp Power Kit, 100A mini-ANL, ultra-flex fine strand, ultimate ground, retail double blister or bulk printed polybag
	EFXAKC8	EFXAKC8B	8 AWG OFC Amp Power Kit, 60A mini-ANL, ultra-flex fine strand, ultimate ground, retail double blister or bulk printed polybag
	EFXAKC10	EFXAKC10B	10 AWG OFC Amp Power Kit, 30A mini-ANL, ultra-flex fine strand, ultimate ground, retail double blister or bulk printed polybag
	EFXCAKCR4	EFXCAKCR4RB	4 AWG Core OFC Amp Installation Kit; 100A mini-ANL, fine strand soft-touch, ultimate ground, split-tip coax RCA, retail double blister or printed polybag
	EFXCAKCR8	EFXCAKCR8RB	8 AWG Core OFC Amp Installation Kit; 60A mini-ANL, fine strand soft-touch, ultimate ground, split-tip coax RCA, retail double blister or printed polybag
POWER WIRE	EFXPWCR0-50		0 AWG OFC Ultra-flex Power Wire; flux-tinned fine strand, frosted red, 50' spool
	EFXPWCBL0-50		0 AWG OFC Ultra-flex Power Wire; flux-tinned fine strand, frosted blue, 50' spool
	EFXPWCB0-50		0 AWG OFC Ultra-flex Power Wire; flux-tinned fine strand, frosted black, 50' spool
	EFXPWCR4-125		4 AWG OFC Ultra-flex Power Wire; flux-tinned fine strand, frosted red, 125' spool
	EFXPWCBL4-125		4 AWG OFC Ultra-flex Power Wire; flux-tinned fine strand, frosted blue, 125' spool
	EFXPWCB4-125		4 AWG OFC Ultra-flex Power Wire; flux-tinned fine strand, frosted black, 125' spool
	EFXPWCR8-250		8 AWG OFC Ultra-flex Power Wire; flux-tinned fine strand, frosted red, 250' spool
	EFXPWCBL8-250		8 AWG OFC Ultra-flex Power Wire; flux-tinned fine strand, frosted blue, 250' spool
	EFXPWCB8-250		8 AWG OFC Ultra-flex Power Wire; flux-tinned fine strand, frosted black, 250' spool
SPEAKER WIRE	EFXSWC12-17		12 AWG OFC Ultra-flex Speaker Wire; flux-tinned fine strand, frosted black, 17' retail mini-spool with tab
	EFXSWC12-250		12 AWG OFC Ultra-flex Speaker Wire; flux-tinned fine strand, frosted black, 250' spool
	EFXSWC14-250		14 AWG OFC Ultra-flex Speaker Wire; flux-tinned fine strand, frosted black, 250' spool
	EFXSWC16-25		16 AWG OFC Ultra-flex Speaker Wire; flux-tinned fine strand, frosted black, 25' retail mini-spool with tab
	EFXSWC16-500		16 AWG OFC Ultra-flex Speaker Wire; flux-tinned fine strand, frosted black 500' spool
	EFXSWC18-500		18 AWG OFC Ultra-flex Speaker Wire; flux-tinned fine strand, frosted black, 500' spool
	EFXS9WC18-12B		9-Wire 18 AWG OFC Ultra-flex Speaker Cable; 4CH+Rem with EIA standard colors, frosted clear, 12' printed polybag
	EFXS9WC18-20B		9-Wire 18 AWG OFC Ultra-flex Speaker Cable; 4CH+Rem with EIA standard colors, frosted clear, 20' printed polybag
	EFXS9WC18-250		9-Wire 18 AWG OFC Ultra-Flex Speaker Cable; 4CH+Rem with EIA standard colors, frosted clear, 250' spool

PRODUCT DIRECTORY

MODEL #	DESCRIPTION	
EFXS5WC18-12B	5-Wire 18AWG OFC Speaker Cable 12' printed polybag	SPEAKER WIRE CONT.
EFXS5WC18-20B	5-Wire 18AWG OFC Speaker Cable 20' printed polybag	
EFXS5WC18-250	5-Wire 18AWG OFC Speaker Cable 250' spool	
EFXFBDM0	0/4GA Dual Mini-ANL Fuse Block; retail double blister	FUSE BLOCKS & HOLDERS
EFXFBM4	4/8GA Mini-ANL Fuse Block; retail double blister	
EFXFBM8	8/10GA Mini-ANL Fuse Block; retail double blister	
EFXCFHDM0	0/4GA Dual Mini-ANL Fuse Holder; cylinder type, retail single blister	
EFXCFHM4	4/8GA Core Mini-ANL Fuse Holder; cylinder type, retail single blister	
EFXCFHG4	4/8GA Core AGU Fuse Holder; cylinder type; retail single blister	
EFXCFHW	0/4GA Core Wafer/ANL Fuse Holder; ring post type, retail single blister	
EFXFBM4WP	4/8GA Weatherproof Mini-ANL Fuse Block; retail double blister	
EFXFBM8WP	8/10GA Weatherproof Mini-ANL Fuse Block; retail double blister	DISTRIBUTION BLOCKS
EFXFDBUQM	0/4-4/8GA Quad Universal Mini-ANL Distribution Block; (1) 0/4GA to (4) 4/8GA or (2) 0/4GA to 2x(2) 4/8GA, dual power/ground combo block w/gnd plate, retail double blister	
EFXFDBUDM	0/4-4/8GA Dual Universal Mini-ANL Distribution Block; (1) 0/4GA to (2) 4/8GA, dual ground block w/gnd plate retail double blister	
EFXGDB04	0/4-4/8GA Ground Distribution Block; (1) 0/4GA to (4) 4/8GA, retail double blister	
EFXGDB48	4-8GA Ground Distribution Block; (1) 4GA to (4) 8GA, retail double blister	
EFXCfdbQG	4-8GA Core Dual AGU Distribution Block; (1) 4GA 3-way to (2) 8GA, retail single blister	
EFXCfdbDG	4-8GA Core Dual AGU Distribution Block; (1) 4GA 3-way to (2) 8GA, retail single blister	
EFXCfdbDM	4-8GA Core Dual Mini-ANL Distribution Block; (1) 4GA 3-way to (2) 8GA, retail single blister	
EFXCGDB04	0-4GA Core Ground Distribution Block; (2) 0GA to (3) 4GA; retail single blister	BATTERY TERMINALS
EFXCGDB48	4-8GA Core Ground Distribution Block; (1) 4GA to (4) 8GA, retail single blister	
EFXBTCUD08	0/4/8GA Universal Battery Terminal; (2) 0/4GA & (2) 8GA outputs, charging post, +/- markers, retail double blister	
EFXCBTO48	0/4/8GA Core Universal Battery Terminal; (1) 0GA, (1) 4GA & (2) 8GA outputs; clamp type, retail single blister	STIFFENING CAPACITOR
EFXDCAPI	True 1-Farad Stiffening Capacitor; yellow 3-digit LED display, low-profile posts, retail double blister	

PRODUCT DIRECTORY

ULTIMATE
GROUND TERMINALS

RETAIL MODEL #	POLYBAG MODEL #	DESCRIPTION
EFXUGT0	EFXUGT0B10	0GA Ultimate Ground Terminal; incl. self-tapping screws, retail double blister or 10pcs bulk polybag
EFXUGT4	EFXUGT4B25	4GA Ultimate Ground Terminal; incl. self-tapping screws, retail double blister or 25pcs bulk polybag
EFXUGT8	EFXUGT8B25	8GA Ultimate Ground Terminal; incl. self-tapping screws, retail double blister or 25pcs bulk polybag
	UGTY-100	10-12GA Ultimate Ground Terminal; yellow, 100pcs bulk polybag
	UGTB-100	14-16GA Ultimate Ground Terminal; blue, 100pcs bulk polybag
	UGTR-100	18-22GA Ultimate Ground Terminal; red, 100pcs bulk polybag

ELITE
BRAIDED MULTI-CORE
INTERCONNECTS

EFXRE3		3' Elite Braided Litz Multi-Core RCA Cable; mesh jacket, Rh/machined ends, retail window box
EFXRE6		6' Elite Braided Litz Multi-Core RCA Cable; mesh jacket, Rh/machined ends, retail window box
EFXRE9		9' Elite Braided Litz Multi-Core RCA Cable; mesh jacket, Rh/machined ends, retail window box
EFXRE12		12' Elite Braided Litz Multi-Core RCA Cable; mesh jacket, Rh/machined ends, retail window box
EFXRE17		17' Elite Braided Litz Multi-Core RCA Cable; mesh jacket, Rh/machined ends, retail window box
EFXRE20		20' Elite Braided Litz Multi-Core RCA Cable; mesh jacket, Rh/machined ends, retail window box
EFXRE25		25' Elite Braided Litz Multi-Core RCA Cable; mesh jacket, Rh/machined ends, retail window box
EFXRE1M2F		1M-2F Elite Braided Litz Multi-Core RCA Y-Adapter; mesh jacket, Rh/machined ends, retail window box
EFXRE1F2M		1F-2M Elite Braided Litz Multi-Core RCA Y-Adapter; mesh jacket, Rh/machined ends, retail window box

REFERENCE
MULTI-CORE
INTERCONNECTS

EFXRR3		3' Reference Twisted Multi-Core RCA Cable; single jacket, shielded, metal-barrel, retail window box
EFXRR6		6' Reference Twisted Multi-Core RCA Cable; single jacket, shielded, metal-barrel, retail window box
EFXRR9		9' Reference Twisted Multi-Core RCA Cable; single jacket, shielded, metal-barrel, retail window box
EFXRR12		12' Reference Twisted Multi-Core RCA Cable; single jacket, shielded, metal-barrel, retail window box
EFXRR17		17' Reference Twisted Multi-Core RCA Cable; single jacket, shielded, metal-barrel, retail window box
EFXRR20		20' Reference Twisted Multi-Core RCA Cable; single jacket, shielded, metal-barrel, retail window box
EFXRR25		25' Reference Twisted Multi-Core RCA Cable; single jacket, shielded, metal-barrel, retail window box
EFXRR1M2F		1M-2F Reference Twisted Multi-Core Y-Adapter; single jacket, shielded, metal-barrel, retail window box
EFXRR1F2M		1F-2M Reference Twisted Multi-Core Y-Adapter; single jacket, shielded, metal-barrel, retail window box

MODEL #	POLYBAG MODEL #	DESCRIPTION
EFXRP1		1' Performance Twisted RCA Cable; split-tip, 2-color micro-barrel, retail window box
EFXRP3		3' Performance Twisted RCA Cable; split-tip, 2-color micro-barrel, retail window box
EFXRP6		6' Performance Twisted RCA Cable; split-tip, 2-color micro-barrel, retail window box
EFXRP9		9' Performance Twisted RCA Cable; split-tip, 2-color micro-barrel, retail window box
EFXRP12		12' Performance Twisted RCA Cable; split-tip, 2-color micro-barrel, retail window box
EFXRP17		17' Performance Twisted RCA Cable; split-tip, 2-color micro-barrel, retail window box
EFXRP20		20' Performance Twisted RCA Cable; split-tip, 2-color micro-barrel, retail window box
EFXRP25		25' Performance Twisted RCA Cable; split-tip, 2-color micro-barrel, retail window box
EFXRP1M2F		1M-2F Performance Twisted RCA Y-adapter; split-tip, 2-color micro-barrel, retail window box
EFXRP1F2M		1F-2M Performance Twisted RCA Y-adapter; split-tip, 2-color micro-barrel, retail window box

EFXRCT3	EFXRCT3B	3' Core Twisted RCA Cable; split-tip, micro-barrel, retail single blister or printed polybag
EFXRCT6	EFXRCT6B	6' Core Twisted RCA Cable; split-tip, micro-barrel, retail single blister or printed polybag
EFXRCT12	EFXRCT12B	12' Core Twisted RCA Cable; split-tip, micro-barrel, retail single blister or printed polybag
EFXRCT17	EFXRCT17B	17' Core Twisted RCA Cable; split-tip, micro-barrel, retail single blister or printed polybag
EFXRCT25	EFXRCT25B	25' Core Twisted RCA Cable; split-tip, micro-barrel, retail single blister or printed polybag
EFXRCT1M2F	EFXRCT1M2FB	1M-2F Core Twisted RCA Y-adapter; split-tip, micro-barrel, retail single blister or printed polybag
EFXRCT1F2M	EFXRCT1F2MB	1F-2M Core Twisted RCA Y-adapter; split-tip, micro-barrel, retail single blister or printed polybag
	EFXRCT4I2B	12' 4-Channel Core Twisted RCA Cable; split tip, micro barrel, printed polybag
	EFXRCT4I7B	17' 4-Channel Core Twisted RCA Cable; split tip, micro barrel, printed polybag

EFXRC1	EFXRC1B	1' Core Coax RCA Cable; split-tip, micro-barrel, retail single blister or printed polybag
EFXRC3	EFXRC3B	3' Core Coax RCA Cable; split-tip, micro-barrel, retail single blister or printed polybag
EFXRC6	EFXRC6B	6' Core Coax RCA Cable; split-tip, micro-barrel, retail single blister or printed polybag
EFXRC9	EFXRC9B	9' Coax RCA cable, split-tip single color-barrel, retail single blister or printed polybag
EFXRC12	EFXRC12B	12' Core Coax RCA Cable; split-tip, micro-barrel, retail single blister or printed polybag
EFXRC17	EFXRC17B	17' Core Coax RCA Cable; split-tip, micro-barrel, retail single blister or printed polybag
EFXRC20	EFXRC20B	20' Core Coax RCA Cable; split-tip, micro-barrel, retail single blister or printed polybag
EFXRC25	EFXRC25B	25' Core Coax RCA Cable; split-tip, micro-barrel, retail single blister or printed polybag
EFXRC1M2F	EFXRC1M2FB	1M-2F Core Coax RCA Y-adapter; split-tip, micro-barrel, retail single blister or printed polybag
EFXRC1F2M	EFXRC1F2MB	1F-2M Core Coax RCA Y-adapter; split-tip, micro-barrel, retail single blister or printed polybag

PERFORMANCE
TWISTED
INTERCONNECTS

CORE
TWISTED
INTERCONNECTS

CORE
COAXIAL
INTERCONNECTS