

WE, THE FAST



★ speed and strength ★

FASTER 2015 STRONGER

**SPEED AND  
STRENGTH**  
FASTER STRONGER



WE THE FAST



★ speed and strength ★

FASTER 2015

★ STRONGER

FULL BATTLE RATTLE™  
LEATHER JACKET5





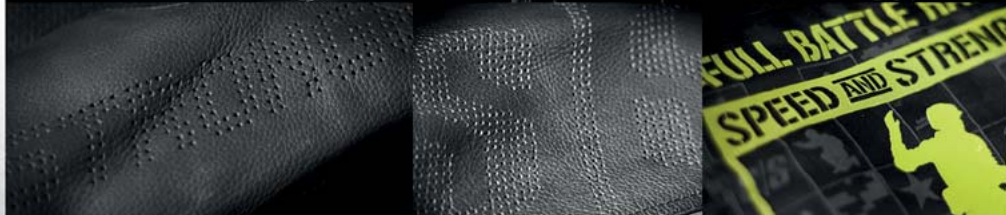
FULL BATTLE RATTLE™  
SS1400 HELMET

FULL BATTLE RATTLE™  
MOTO SHOES



FULL BATTLE RATTLE™  
LEATHER GLOVES 5

# FULL BATTLE RATTLE™





RUST AND REDEMPTION™  
LEATHER JACKET



RUST AND REDEMPTION™  
ARMORED JEANS



RUST AND REDEMPTION™  
LEATHER GLOVES



RUST AND REDEMPTION™  
T-SHIRT

# RUST AND REDEMPTION™



RUST AND REDEMPTION™  
TEXTILE JACKET





RUST AND REDEMPTION<sup>SM</sup> ss600  
HELMET







CHAIN REACTION™ TEXTILE JACKET





TWIST OF FATE™  
SS1400 HELMET



CHAIN REACTION™  
TEXTILE GLOVES



SPEED SOCIETY™  
LEATHER/TEXTILE JACKET





SPEED SOCIETY™  
HIP BAG



SPEED SOCIETY™  
SS650 HELMET



SPEED SOCIETY™  
LEATHER BOOTS

# SPEED SOCIETY™

SPEED AND STRENGTH  
CHECKERED PATTERN



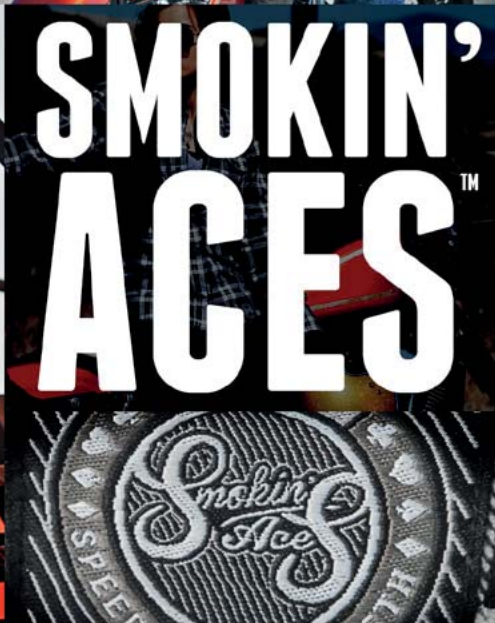
SMOKIN' ACES™ LEATHER  
BOOTS



SMOKIN' ACES™ ARMORED  
PANTS



SMOKIN' ACES™  
FLEECE



SMOKIN' ACES™  
REINFORCED MOTO SHIRT



SMOKIN' ACES™  
T-SHIRT

KILLER QUEEN™  
SS1500 HELMET







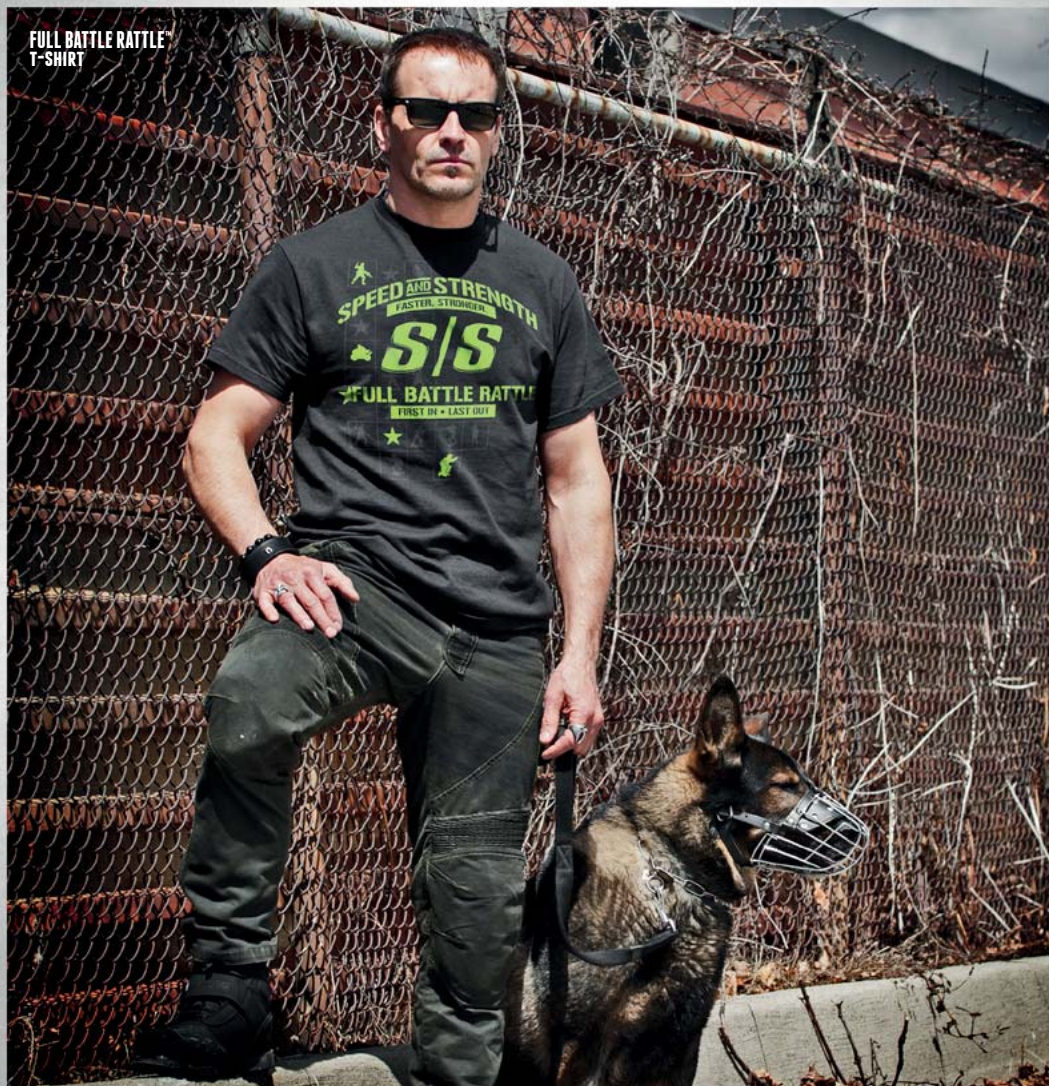
KILLER QUEEN™ ARMORED  
HOODY

KILLER QUEEN™  
ARMORED VEST

# KILLER QUEEN™



FULL BATTLE RATTLE™  
T-SHIRT





RUST AND REDEMPTION™  
GARAGE SHIRT



WE THE FAST™  
T-SHIRT



WE THE FAST™  
HAT



CRUISE MISSILE™  
T-SHIRT



SMOKIN' ACES™  
T-SHIRT



2015  
LIFESTYLE™



CRUISE MISSILE™  
LEATHER/TEXTILE JACKET



# CRUISE MISSILE™

CRUISE MISSILE™  
LEATHER BOOTS



CRUISE MISSILE™  
SS1600 HELMET

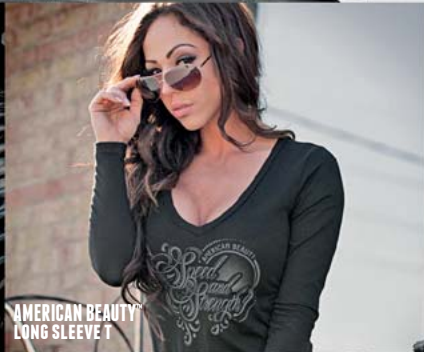


AMERICAN BEAUTY™  
SS1600 HELMET

AMERICAN BEAUTY™  
LEATHER/TEXTILE

KILLER QUEEN™ ARMORED  
JEANS





DOGS OF WAR™  
SS2400 HELMET









# **SPEED AND STRENGTH**

FASTER. STRONGER.  
**2014**





**SPEED AND  
STREET**

A close-up photograph of a white motorcycle fairing. The word "STRENGTH" is printed in large, bold, black, distressed letters. Below the text is a row of five red, five-pointed stars. To the right, a black and white "DOG OF WAR" logo is visible, featuring a stylized dog head. A small American flag decal is also present. The background is dark and out of focus.

**STRENGTH**

# **"SPEEDING IS BELIEVING"**

**IN FIVE FAST YEARS, SPEED AND STRENGTH HAS GONE FROM A COCKTAIL NAPKIN CONCEPT TO A CHAMPIONSHIP CONTENDER. WHAT STARTED AS A "BIKES ARE IN MY BLOOD" CALL TO ARMS FROM A SMALL GROUP OF DETERMINED DESIGNERS AND HARD-CORE MOTOR HEADS, HAS BECOME A BADGE OF HONOR FOR HUNDREDS OF THOUSANDS OF S/S RIDERS ACROSS NORTH AMERICA. WHEN YOU RIDE WITH THE BEST: 10X WORLD CHAMPION RICKEY GADSON, XDL CHAMPION BILL DIXON, AMA GRAND NATIONAL CHAMPION JARED MEES, AMA XR1200 CHAMPION MICHAEL BARNES AND DAYTONA 200 WINNER JOEY PASCARELLA, YOU'RE PART OF THE SPEED AND STRENGTH COMMUNAL CONSCIOUSNESS AND THE LOVE OF ABSOLUTE ACCELERATION.**

**OUR SECOND FIVE YEARS STARTS RIGHT NOW AS WE ROLL OUT OUR BEST FOR 2014. SPEED AND STRENGTH SHOWS WHY IT'S THE FASTEST GROWING STREET BRAND IN AMERICA WITH THE NEW "URGE OVERKILL™" COLLECTION THAT'S BUILT FOR SPEED, TESTED TO DESTRUCTION AND SETS A NEW STANDARD FOR URBAN ADVENTURE. WE'RE HONORED TO KICKSTART THE "DOGS OF WAR™" INITIATIVE THAT LETS US PAY BACK FOR ALL THE GOOD THAT'S COME OUR WAY. WITH HONOR, DUTY, COUNTRY AND MAN'S BEST FRIEND, YOU'LL BELIEVE THAT SOMETIMES MOTORCYCLES ARE MORE THAN TWO WHEELS.**





## **URGE OVERKILL™**

SS2500 HELMET

- "T.F.C.™" TRI-COMPOSITE FIBERGLASS SHELL
- MEETS OR EXCEEDS DOT AND ECE 22-05 STANDARDS
- "COOL-CORE®" REMOVABLE, WASHABLE AND MOISTURE WICKING LINER
- "AIR STRIKE™" DIRECT COURSE VENTILATION SYSTEM
- "ALL CLEAR!™" SIGHT SYSTEM OPTICALLY CORRECT, ANTI-SCRATCH, ANTI-FOG AND UV RESISTANT FACE SHIELD
- "SPEED STRAP™" QUICK RELEASE CHIN STRAP



TINTED SHIELDS SOLD SEPARATELY. FOR DAYTIME USE ONLY.





## **KILLER QUEEN™**

**SS1500 HELMET**

- "A.T.P.A.™" ADVANCED THERMO-POLY ALLOY SHELL
- MEETS OR EXCEEDS DOT AND ECE 22-05 STANDARDS
- "COOL-CORE®" REMOVABLE, WASHABLE AND MOISTURE WICKING LINER
- "AIR STRIKE™" DIRECT COURSE VENTILATION SYSTEM
- "LOCK N LOAD™" SHIELD REPLACEMENT SYSTEM
- "ALL CLEAR!™" SIGHT SYSTEM OPTICALLY CORRECT, ANTI-SCRATCH, ANTI-FOG AND UV RESISTANT FACE SHIELD
- "SPEED STRAP™" QUICK RELEASE CHIN STRAP
- "DVD™" DROP VISOR DESIGN
- "PUMP-IT™" AIR FIT SYSTEM



TINTED SHIELDS SOLD SEPARATELY. FOR DAYTIME USE ONLY.





**SPEED**  
SPEED AND STRENGTH

**SPEED**

**SPEED**



## **SPEED STRONG™**

**SS1300 HELMET**

- "A.T.P.A.™" ADVANCED THERMO-POLY ALLOY SHELL
- MEETS OR EXCEEDS DOT AND ECE 22-05 STANDARDS
- "COOL-CORE®" REMOVABLE, WASHABLE AND MOISTURE WICKING LINER
- "AIR STRIKE™" DIRECT COURSE VENTILATION SYSTEM
- "LOCK N LOAD PLUS™" SHIELD REPLACEMENT SYSTEM
- "LOCKDOWN™" SHIELD SECURITY SYSTEM
- "ALL CLEAR!™" SIGHT SYSTEM OPTICALLY CORRECT, ANTI-SCRATCH, ANTI-FOG AND UV RESISTANT FACE SHIELD
- "SPEED STRAP™" QUICK RELEASE CHIN STRAP



TINTED SHIELDS SOLD SEPARATELY. FOR DAYTIME USE ONLY.





## **TAPOUT® MOTO™** SS700 HELMET

- "A.TPA.™" ADVANCED THERMO-POLY ALLOY SHELL
- MEETS OR EXCEEDS DOT STANDARDS
- REMOVABLE, WASHABLE AND MOISTURE WICKING LINER
- "AIR STRIKE™" DIRECT COURSE VENTILATION SYSTEM
- "LOCK N LOAD™" SHIELD REPLACEMENT SYSTEM
- "ALL CLEAR!™" SIGHT SYSTEM OPTICALLY CORRECT, ANTI-SCRATCH, AND UV RESISTANT FACE SHIELD
- "SPEED STRAP™" QUICK RELEASE CHIN STRAP



TINTED SHIELDS SOLD SEPARATELY. FOR DAYTIME USE ONLY.



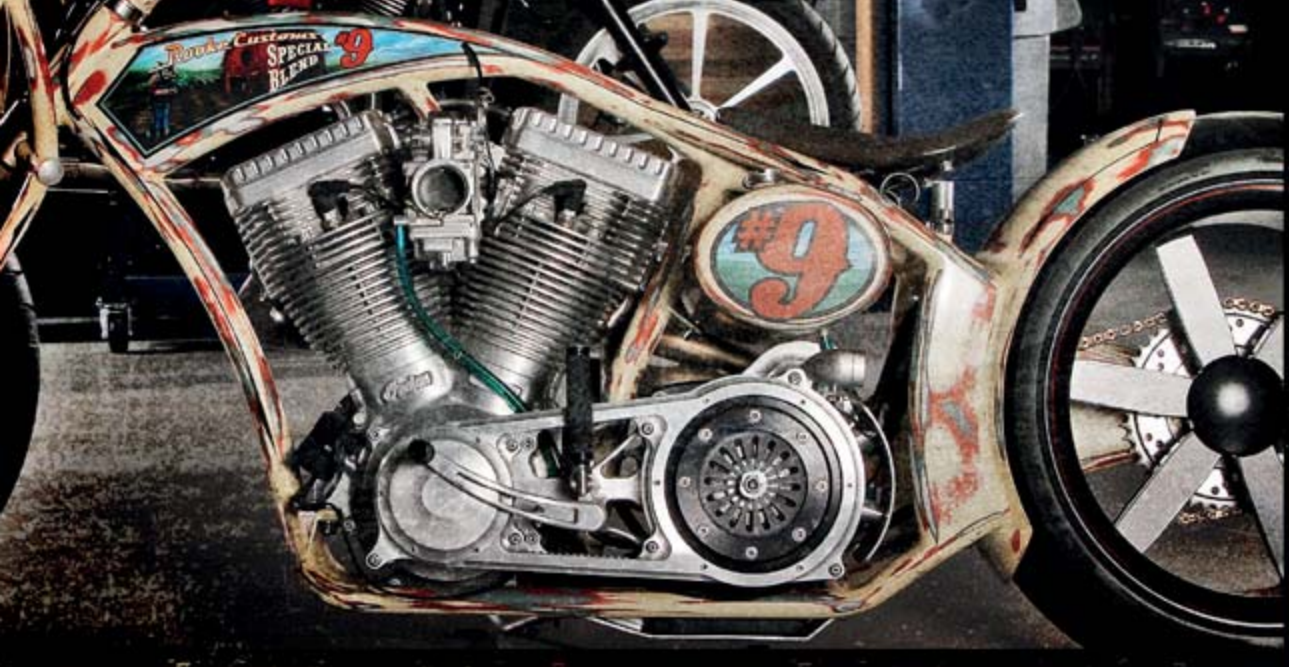


## **DOGS OF WAR™** SS700 HELMET

- "A.T.P.A.™" ADVANCED THERMO-POLY ALLOY SHELL
- MEETS OR EXCEEDS DOT STANDARDS
- REMOVABLE, WASHABLE AND MOISTURE WICKING LINER
- "AIR STRIKE™" DIRECT COURSE VENTILATION SYSTEM
- "LOCK N LOAD™" SHIELD REPLACEMENT SYSTEM
- "ALL CLEAR!™" SIGHT SYSTEM OPTICALLY CORRECT, ANTI-SCRATCH, AND UV RESISTANT FACE SHIELD
- "SPEED STRAP™" QUICK RELEASE CHIN STRAP



TINTED SHIELDS SOLD SEPARATELY. FOR DAYTIME USE ONLY.





## **ROOKE CUSTOMS™** SS600 HELMET

- "TPA™" THERMO-PLASTIC ALLOY SHELL
- MEETS OR EXCEEDS DOT STANDARDS
- QUILTED COMFORT LINING
- "AIR STRIKE™" DIRECT COURSE VENTILATION SYSTEM
- DOUBLE "D" D-RING RETENTION SYSTEM









## **STARS AND STRIPES™** *SS300 HELMET*

- "A.T.P.A.™" ADVANCED THERMO-POLY ALLOY SHELL
- MEETS OR EXCEEDS DOT STANDARDS
- "SPEED STRAP™" QUICK RELEASE CHIN STRAP
- SHORTY VISOR INCLUDED







## **TWIST OF FATE 3.0™** *RACESUIT*

- 1.2 - 1.4MM PREMIUM COWHIDE LEATHER FRAME
- C.E. APPROVED SHOULDER, KNEE AND ELBOW PROTECTORS
- C.E. APPROVED SPINE PROTECTOR
- H.I.S.S. MAIN SEAMS ( HIGH IMPACT SAFETY SEAMS )
- SCHOELLER® KEPROTEC® STRETCH PANELS
- REINFORCED WITH DUPONT™ KEVLAR® FIBER THREAD
- ANATOMICAL RACE CUT FIT
- AERODYNAMIC RACE HUMP
- PERFORATED FRONT TORSO
- LOW RESTRICTION COLLAR
- KNEE SLIDERS
- TPR LOGOS

DuPont™ and KEVLAR® are registered trademarks or trademarks of E.I. du Pont de Nemours and Company and are used with permission





**SPEED AND STRENGTH**  
**U \* R \* G \* E**  
**OVERKILL**



## **URGE OVERKILL™**

TEXTILE JACKET

- SEAM SEALED WATERPROOF AR-600 FRAME
- REINFORCED SHOULDERS AND ELBOWS
- REMOVABLE "VAULT™" C.E. APPROVED SHOULDER AND ELBOW PROTECTORS
- REMOVABLE "VAULT™" C.E. APPROVED SPINE PROTECTOR
- REMOVABLE "COOL-CORE®" MOISTURE WICKING LINER
- WATERPROOF POCKETS
- LARGE WATERPROOF REAR STORAGE POCKET
- DETACHABLE HOOD
- "SPEED ZIP™" CONTROLLED VENTILATION
- MOLDED "STRONG ARM™" SLEEVE ADJUSTER
- INNER CINCH CORD WAIST ADJUSTER
- MICROFIBER LINED COLLAR AND CUFFS
- REFLECTIVE TRIM





## **STARS AND STRIPES™** TEXTILE JACKET

- WATER RESISTANT AR-700 FRAME
- REMOVABLE "VAULT™" C.E. APPROVED SHOULDER AND ELBOW PROTECTORS
- REMOVABLE "VAULT™" C.E. APPROVED SPINE PROTECTOR
- SHOULDER EXPANSION GUSSETS
- REMOVABLE INSULATED VEST LINER
- DETACHABLE HOOD
- "SPEED ZIP™" CONTROLLED VENTILATION
- "LOCKDOWN™" WAIST ADJUSTER
- MICROFIBER LINED COLLAR AND CUFFS
- BELT LOOPS FOR PANT ATTACHMENT
- REFLECTIVE TRIM







## **TAPOUT<sup>®</sup> MOTO<sup>™</sup>** **ARMORED HOODY**

- COTTON POLY BLEND FRAME
- REMOVABLE "VAULT<sup>™</sup>" C.E. APPROVED SHOULDER AND ELBOW PROTECTORS
- REMOVABLE "VAULT<sup>™</sup>" C.E. APPROVED SPINE PROTECTOR
- RAW EDGE SEAMS
- PREMIUM 3D EMBROIDERED ART



## **SPEEDSTRONG™**

**ARMORED SOFT SHELL JACKET**

- WATER RESISTANT SOFT SHELL FRAME
- REINFORCED AR-1000 SHOULDERS, ELBOWS AND BACK
- REMOVABLE "VAULT™" C.E. APPROVED SHOULDER AND ELBOW PROTECTORS
- REMOVABLE "VAULT™" C.E. APPROVED SPINE PROTECTOR
- LARGE REAR STORAGE POCKET
- DETACHABLE HOOD
- "SPEED ZIP™" CONTROLLED VENTILATION
- MOLDED "STRONG ARM™" SLEEVE ADJUSTER
- INNER CINCH CORD WAIST ADJUSTER
- SUBLIMATED COLLAR AND HEM
- MICROFIBER LINED CUFFS
- BELT LOOPS FOR PANT ATTACHMENT
- REFLECTIVE TRIM

**SPEEDSTRONG™**  
SPEED AND

LED  
STRENGTH



**STAR STRUCK™**  
*ARMORED SOFT SHELL JACKET*

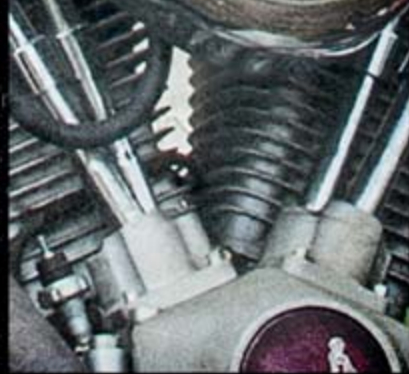
- WATER RESISTANT SOFT SHELL FRAME
- REINFORCED AR-1000 SHOULDERS AND ELBOWS
- REMOVABLE "VAULT™" C.E. APPROVED SHOULDER AND ELBOW PROTECTORS
- REMOVABLE "VAULT™" C.E. APPROVED SPINE PROTECTOR
- DETACHABLE HOOD
- "SPEED ZIP™" CONTROLLED VENTILATION
- INNER CINCH CORD WAIST ADJUSTER
- SUBLIMATED COLLAR AND HEM
- MICROFIBER LINED CUFFS
- BELT LOOPS FOR PANT ATTACHMENT
- REFLECTIVE TRIM





## **BLACK WIDOW™** LEATHER JACKET

- 0.9 - 1.1MM PREMIUM COWHIDE LEATHER FRAME
- REMOVABLE "VAULT™" C.E. APPROVED SHOULDER AND ELBOW PROTECTORS
- POCKET FOR "VAULT™" C.E. APPROVED SPINE PROTECTOR
- REMOVABLE INSULATED VEST LINER
- "LOCKDOWN™" WAIST ADJUSTER
- BELT LOOPS FOR PANT ATTACHMENT
- REFLECTIVE TRIM





## **KILLER QUEEN™** *ARMORED HOODY*

- COTTON POLY BLEND FRAME
- REMOVABLE "VAULT™" C.E. APPROVED SHOULDER AND ELBOW PROTECTORS
- REMOVABLE "VAULT™" C.E. APPROVED SPINE PROTECTOR
- PREMIUM 3D EMBROIDERED ART
- ZIPPERED HAND WARMER POCKETS





## **URGE OVERKILL™** TEXTILE PANT

- SEAM SEALED WATERPROOF AR-600 FRAME
- REINFORCED KNEES
- REMOVABLE "VAULT™" C.E. APPROVED KNEE PROTECTORS
- WATERPROOF POCKETS
- "SPEED ZIP™" CONTROLLED VENTILATION
- "LOCK DOWN™" RATCHET WAIST ADJUSTER
- SILICOM PRINTED WAIST BAND
- ACCORDION STYLE STRETCH PANELS AT KNEES AND LOWER BACK
- "SNAP-BACK™" HEM SAVER
- REFLECTIVE TRIM



## **URGE OVERKILL™** **WATERPROOF BOOT**

- COMBINED LEATHER AND MESH UPPER
- WATERPROOF
- ANTI-SLIP RUBBER OUTSOLE
- INTERNAL TOE AND ANKLE REINFORCEMENTS
- "LOCK 'N LOAD™" ALUMINUM BUCKLE WITH ADJUSTABLE STRAP
- PADDED ANKLE PROTECTOR
- INTEGRATED SHIFTER PAD
- REFLECTIVE TRIM



## **TWIST OF FATE 3.0 RR™** *LEATHER GLOVE*

- SEAM SEALED WATERPROOF AR-600 FRAME
- REINFORCED KNEES
- REMOVABLE "VAULT™" C.E. APPROVED KNEE PROTECTORS
- WATERPROOF POCKETS
- "SPEED ZIP™" CONTROLLED VENTILATION
- "LOCK DOWN™" RATCHET WAIST ADJUSTER
- SILICON PRINTED WAIST BAND
- ACCORDION STYLE STRETCH PANELS AT KNEES AND LOWER BACK
- "SNAP-BACK™" HEM SAVER
- REFLECTIVE TRIM

DuPont™ and KEVLAR® are registered trademarks or trademarks of E.I. du Pont de Nemours and Company and are used with permission



## **URGE OVERKILL™**

**WATERPROOF LEATHER/TEXTILE GLOVE**

- LEATHER AND TEXTILE FRAME
- WATERPROOF
- MOLDED HIGH IMPACT KNUCKLE PROTECTOR
- HIGH DENSITY FINGER PROTECTORS
- REINFORCED SYNTHETIC PALM
- FACE SHIELD WIPER
- HOOK AND LOOP CUFF CLOSURE
- HOOK AND LOOP WRIST CLOSURE
- GAITER STYLE GAUNTLET WITH CINCH CORD ADJUSTER



## **URGE OVERKILL™**

**DEALER IMPRINT GARAGE SHIRT**

- 4.25 OZ 65% POLYESTER 35% COTTON BLEND
- DOUBLE POCKETS ON CHEST
- FLAT SCREENED LOGOS

## **STARS AND STRIPES™**

**LS T-SHIRT**

- 100% COTTON
- FLAT SCREENED LOGOS



## **TAPOUT®**

**T-SHIRT**

- 100% COTTON
- FLAT SCREENED LOGOS

**TBD**

## ROOKE CUSTOMS™

T-SHIRT

**TBD**

- 100% COTTON
- FLAT SCREENED LOGOS



## TAPOUT®

T-SHIRT

- 100% COTTON
- FLAT SCREENED LOGOS

**TBD**



## URGE OVERKILL™

T-SHIRT

- 100% COTTON
- FLAT SCREENED LOGOS





## **STARS AND STRIPES™** T-SHIRT

- 100% COTTON
- FLAT SCREENED LOGOS



## **HOT RODS™** T-SHIRT

- 100% COTTON
- FLAT SCREENED LOGOS



## **DOGS OF WAR™** T-SHIRT

- 100% COTTON
- FLAT SCREENED LOGOS

## **TOP DEAD CENTER™**

**BALL CAP**

- FLEXFIT® BALL CAP
- 6 PANEL, MID PROFILE
- STRETCH FIT
- CURVED VISOR



## **MOTO MERCENARY™**

**BALL CAP**

- FLEXFIT® BALL CAP
- 6 PANEL, MID PROFILE
- STRETCH FIT
- FLAT BRIM



## **RAGE WITH THE MACHINE™**

**BALL CAP**

- FLEXFIT® BALL CAP
- 6 PANEL, MID PROFILE
- STRETCH FIT
- CURVED VISOR











## **DOGS OF WAR™** *V-NECK T-SHIRT*

- 60% COTTON 40% POLYESTER BLEND
- DEEP V-NECK COLLAR
- FLAT SCREENED LOGO
- RHINESTONE EMBELLISHMENTS

## **TAPOUT®** *V-NECK T-SHIRT*

- 60% COTTON 40% POLYESTER BLEND
- DEEP V-NECK COLLAR
- FLAT SCREENED LOGO

**TBD**



## STARS AND STRIPES™

V-NECK T-SHIRT

- 60% COTTON 40% POLYESTER BLEND
- DEEP V-NECK COLLAR
- FLAT SCREENED LOGO
- RHINESTONE EMBELLISHMENTS



## KILLER QUEEN™

V-NECK T-SHIRT

- 60% COTTON 40% POLYESTER
- DEEP V-NECK COLLAR
- FLAT SCREENED LOGOS
- FOIL ACCENTS



[WARRIORDOGFOUNDATION.ORG](http://WARRIORDOGFOUNDATION.ORG)

*SPEED AND STRENGTH AND TUCKER ROCKY DISTRIBUTING ARE PROUD TO BE CORPORATE SPONSORS OF THE WARRIOR DOG FOUNDATION. FOUNDED BY MIKE RITLAND, WHO FOUGHT AS A NAVY SEAL IN OPERATION IRAQI FREEDOM, WITH THE SOLE PURPOSE OF GIVING BACK TO THE NAVY SEAL AND SPECIAL OPERATIONS COMMUNITY. THE WARRIOR DOG FOUNDATION HELPS TRANSITION DOGS FROM AN OPERATIONAL ENVIRONMENT. THEY EDUCATE THE PUBLIC ON THE IMPORTANCE OF SPECIAL OPERATION FORCES K-9'S IN THE COMBAT ENVIRONMENT AND SHOWCASE THE LEVEL OF SACRIFICE THESE DOGS GIVE IN THE SUPPORT OF OUR TROOPS. THEY CARE FOR EACH RETIRED K-9 WITH DIGNITY AND GRACE, INCLUDING BOTH MENTAL AND PHYSICAL REHABILITATION FOR THE REST OF THEIR LIVES.*







# **SPEED AND STRENGTH**

**FASTER. STRONGER.**







— SPRING 2014 —

# AUTHENTIC AMERICAN

— COLLECTION —





**HOT RODS™  
T-SHIRT**





**BIKES ARE IN MY BLOOD™**  
**LEATHER JACKET**





JESSE ROOKE  
CUSTOM BIKE BUILDER



ROOKE CUSTOMS™  
T-SHIRT

ROOKE CUSTOMS™  
LIMITED EDITION  
LEATHER JACKET



ROOKE 2 STROKE™  
SS600 HELMET

**WILLIE MCCOY**  
A.M.A. DIRT TRACK RACER



**GARY NIXON**  
AMERICAN LEGEND



NIXON REPLICA™  
SS600 HELMET



NIXON REPLICA™  
LIMITED EDITION  
LEATHER JACKET





**MOMENT OF TRUTH™  
MOTO SHOES**



**TOP DEAD CENTER™  
GLOVES**



**TOP DEAD CENTER™  
SS700 HELMET**



TOP DEAD CENTER™  
LEATHER JACKET





**DOGS OF WAR™  
T-SHIRT**



**DOGS OF WAR™  
SST00 HELMET**



**DOGS OF WAR™  
TEXTILE JACKET**





RESTOMOD™  
SS600 HELMET



OFF THE CHAIN™  
HOODY TEXTILE JACKET



SPEED SHOP™  
BOOTS





**CRUISE MISSILE™  
GLOVES**



**SPEED SHOP™  
SS600 HELMET**



**CRUISE MISSILE™  
TEXTILE/LEATHER JACKET**



**HARD KNOCK LIFE™  
BOOTS**





AMERICAN BEAUTY™  
SS600 HELMET





MOTOLISA™  
GLOVES



AMERICAN BEAUTY™  
TEXTILE/LEATHER JACKET



**TO THE NINES™  
TEXTILE JACKET**



**HEART AND SOUL™  
TEXTILE JACKET**





HEART AND SOUL™  
SS650 HELMET



SPEED METAL™  
SS600 HELMET



**THROTTLE BODY™  
TEXTILE JACKET**



**DYSTANY SPURLOCK  
PROFESSIONAL DRAG RACER**



**THROTTLE BODY™  
GLOVES**

**THROTTLE BODY™  
LEATHER JACKET**



**DENA SODANO  
PROFESSIONAL STUNT RIDER**



**THROTTLE BODY™  
T-SHIRT**

LUNATIC FRINGE™  
ARMORED MESH JERSEY



\*AVAILABLE FOR SPRING 2014



LUNATIC FRINGE™  
GLOVES



LUNATIC FRINGE™  
SS2500 HELMET



LUNATIC FRINGE™  
ARMORED VEST



**STARS AND STRIPES™  
T-SHIRT**

**STARS AND STRIPES™  
GLOVES**



**BLACK NINE™  
REINFORCED SHIRT WITH DuPONT™ KEVLAR®**





**BLACK NINE™  
MOTO SHOES**



**BLACK NINE™  
SS600 HELMET**



URGE OVERKILL  
SS1100 HELMET



RUN WITH THE BULLS™  
MESH JACKET





**BILL DIXON**  
PROFESSIONAL STUNT RIDER

**RUN WITH THE BULLS™**  
REINFORCED JEANS



**RUN WITH THE BULLS™**  
MOTO SHOES





**WICKED GARDEN™  
MESH JACKET**



**WICKED GARDEN™  
MOTO SHOES**





WICKED GARDEN™  
SS1300 HELMET

WICKED GARDEN™  
GLOVES



WICKED GARDEN™  
BASEBALL T-SHIRT

**TAPOUT® MOTO™  
ARMORED HOODY**



**JOE TOBOLIC  
PROFESSIONAL STUNT RIDER**



**TAPOUT® MOTO™  
T-SHIRT**

**TAPOUT® MOTO™  
SS700 HELMET**





TAPOUT<sup>®</sup> MOTO<sup>™</sup>  
GLOVES



62 MOTORSPORTS™  
TEXTILE JACKET



62 MOTORSPORTS  
3.2.0  
AND STRENGTH  
RICKEY GADSON  
GET STRONGER  
WORLD CHAMPION  
TESTED ★ 8 SECOND CLUB

62 MOTORSPORTS™  
T-SHIRT



62 MOTORSPORTS™  
SS1100 HELMET



RICKEY GADSON  
10X WORLD CHAMPION DRAG RACER

Check out the collection of motorcycle boots and footwear we offer.