

# TORC

HELMETS



2019  
**TORC**  
HELMETS



H&H Sports Protection srl disclaims all liability for any errors or inaccuracies and reserves the right to make any changes, without notice, to the characteristics of the products shown. The data contained in this publication may therefore not be updated. The images are intended as purely demonstrative and may not accurately represent the final product. For more information, contact the company. No part of this catalog may be reproduced, disclosed or used in any form or by any means, electronic or mechanical, including photocopying, recording on any medium or by any other means to store or retain information without the express consent of H&H Sports Protection srl.



# YOU'LL SEE WHY OTHERS FEEL LEFT BEHIND.

<i>NEW FOR 2019</i> T-1 RETRO CARBON FIBER	# 04	T-14 STREET FULL FACE	# 50
T-1 RETRO FULL FACE SHELL	06	T-28 SPORT MODULAR	56
T-50 3/4 RETRO	16	T-5 LOW PROFILE 1/2 SHELL	62
T-50 3/4 RETRO CLASSIC	34	T-55 DROP DOWN 1/2 SHELL	66
<i>NEW FOR 2019</i> T-3 RETRO MOTO FULL FACE	38	T-53 CLASSIC 1/2 SHELL	70
BLINC BLUETOOTH	42	TORC GLOVES	74
T-15 SPORT FULL FACE	44	ACCESSORIES	84

# FULL FACE

NEW FOR 2019.

## T-1 CARBON FIBER

CLASSIC STYLING.

# CARBON FIBER

THE NEW TORC T-1 IS THE RETRO-MODERN LEADER. CLASSIC FULL-FACE STYLING COMBINES WITH MODERN MULTI-DENSITY EPS CONSTRUCTION, IMPRESSIVE VENTILATION, A HIGH-QUALITY REMOVABLE FACE SHIELD AND AN ULTRA-PLUSH INTERIOR.

- FRONT CHIN VENTS WITH METAL MESH INTAKE AND EXHAUST VENTS
- REMOVABLE SHIELD
- ANTI-SCRATCH & ANTI-FOG RESISTANT SHIELD
- REMOVABLE PREMIUM FAUX SUEDE LINER
- PADDED CHIN STRAP WITH D-RING CLOSURE
- MULTI-DENSITY EPS
- CARBON FIBER SHELL CONSTRUCTION
- CERTIFIED DOT & ECE 22.05

NEW FOR 2019

# T-1 CARBON FIBER



**T-1 CARBON FIBER GLOSS**  
T1C36  
XS - XXL



**T-1 CARBON FIBER MATTE**  
T1C39  
XS - XXL





# FULL FACE RETRO

## T-1 CLASSIC STYLING.

THE NEW TORC T-1 IS THE RETRO-MODERN LEADER. CLASSIC FULL-FACE STYLING COMBINES WITH MODERN MULTI-DENSITY EPS CONSTRUCTION, IMPRESSIVE VENTILATION, A HIGH-QUALITY REMOVABLE FACE SHIELD AND AN ULTRA-PLUSH INTERIOR.

- FRONT CHIN VENTS WITH METAL MESH INTAKE AND EXHAUST VENTS
- REMOVABLE SHIELD
- ANTI- SCRATCH & ANTI-FOG RESISTANT SHIELD
- REMOVABLE PREMIUM FAUX SUEDE LINER
- PADDED CHIN STRAP WITH D-RING CLOSURE
- MULTI-DENSITY EPS
- COMPOSITE SHELL CONSTRUCTION
- CERTIFIED DOT & ECE 22.05



SHOWN WITH TINTED SHIELD



10

T-1 COPPER PIN  
T105COP  
XS - XXL

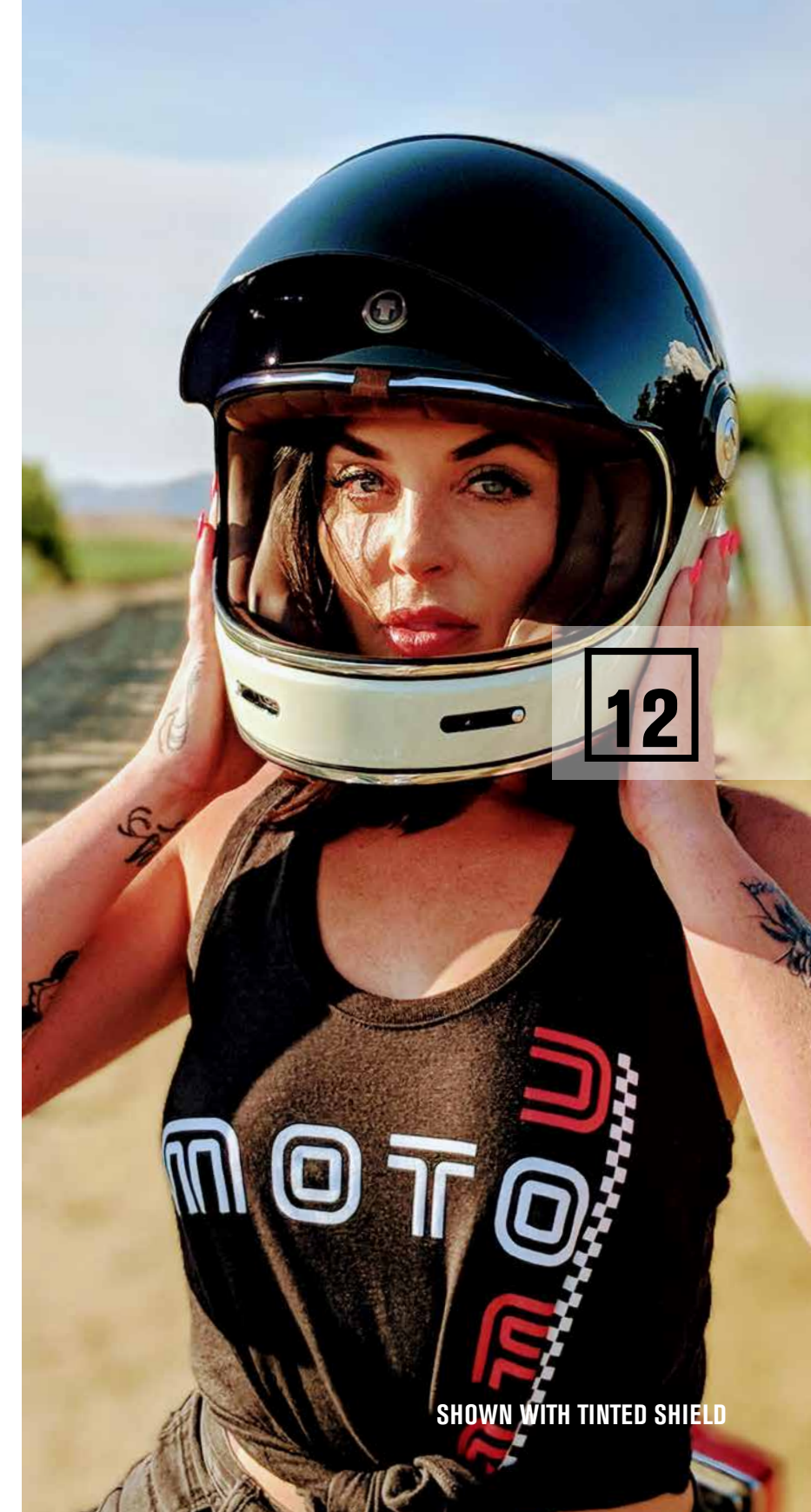




**T-1 DREAMLINNER BLACK GREY**  
T105DLG  
XS - XXL



**T-1 DREAMLINNER BLACK TAN**  
T105DLT  
XS - XXL



12

SHOWN WITH TINTED SHIELD



**T-1 CAPTAIN VEGAS**  
T105CAP  
XS - XXL



**T-1 AMERICANA TRON**  
T105AMT  
XS - XXL



**T-1 GLOSS BLACK**  
T105  
XS - XXL



**T-1 ISO BARS**  
T102ISO  
XS - XXL



**T-1 MATTE BLACK**  
T115  
XS - XXL





**3/4 RETRO**

**T-50**

**CLASSIC IN EVERYWAY.**

THE TORC T-50 SET THE STANDARD FOR 3/4-SHELL HELMETS MORE THAN A DECADE AGO. NOW, IT'S THE BENCHMARK OF THE SEGMENT FOR STYLE AND EXCEPTIONAL FIT. OLD SCHOOL DOESN'T HAVE TO MEAN PAINFUL, AND ONE RIDE IN THE T-50 WILL HAVE YOU LOVING YOUR NEWFOUND COMFORT.

- FAUX SUEDE LINER
- MULTI-DENSITY EPS
- PADDED CHIN STRAP WITH D-RING CLOSURE
- REMOVABLE VISOR & CHEEK PADS
- CERTIFIED DOT



**T-50 CAPTAIN VEGAS RWB**  
T5002CAP  
XS - XXL





**T-50 WEATHERED SILVER**

T5015WSIL

XS - XXL



**T-50 WEATHERED BRONZE**

T5015WBRZ

XS - XXL

**NEW FOR 2019**

NEW THIS YEAR TO THE TORC LINE IS THE WEATHERED LINE. EACH IS CREATED BY HAND TO GIVE IT THAT AGED LOOK THAT TAKES YEARS TO ACHIEVED, NOW YOU CAN HAVE IT TODAY.



**T-50 COPPER CROW**  
T5015COC  
XS - XXL



**T-50 EIGHT BALL**  
T5005EB  
XS - XXL



**T-50 LUCKY 13 TANK**  
T5015TK  
XS - XXL



**T-50 SMOKE SKULL**  
T5015SM  
XS - XXL



**T-50 BULLHEAD**  
T5015BH  
XS - XXL





**T-50 REBEL STAR**  
T5002RS  
XS - XXL



**T-50 DREAMER**  
T5020DM  
XS - XXL



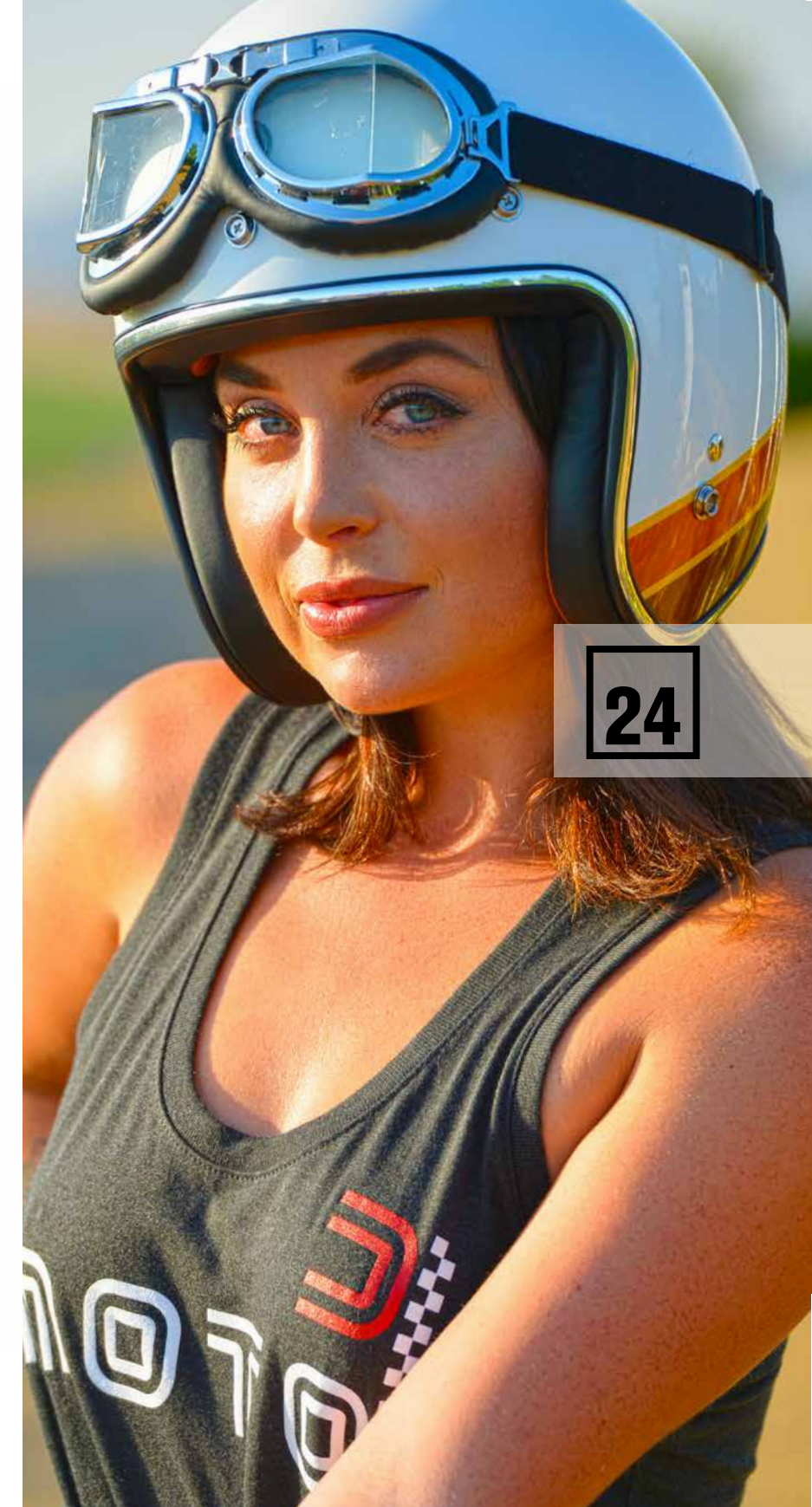
**T-50 FASTLANE**  
T5030FL  
XS - XXL



**T-50 OLD GLORY**  
T50200G  
XS - XXL



**T-50 ISO BARS**  
T5002ISO  
XS - XXL





**T-1 CHAMP**  
T5015CH  
XS - XXL

**T-50 FINALE**  
T5015FN  
XS - XXL



**T-50 CAPTAIN VEGAS**  
T5005CAP  
XS - XXL

**T-50 LUMINOUS**  
T5005LM  
XS - XXL

**T-50 1978**  
T5005SE  
XS - XXL



**T-50 PCH**  
T5020PCH  
XS - XXL



**T-50 GRIZZLY**  
T5022GZ  
XS - XXL



**T-50 POLYGONIOUS**  
T5005POL  
XS - XXL



**T-50 GLOSS BLACK**  
T5005  
XS - XXL



**T-50 MATTE BLACK**  
T5015  
XS - XXL



**T-50 WINGS**  
T5015WS  
XS - XXL



**T-50 FLYING TIGER**  
T5015FT  
XS - XXL



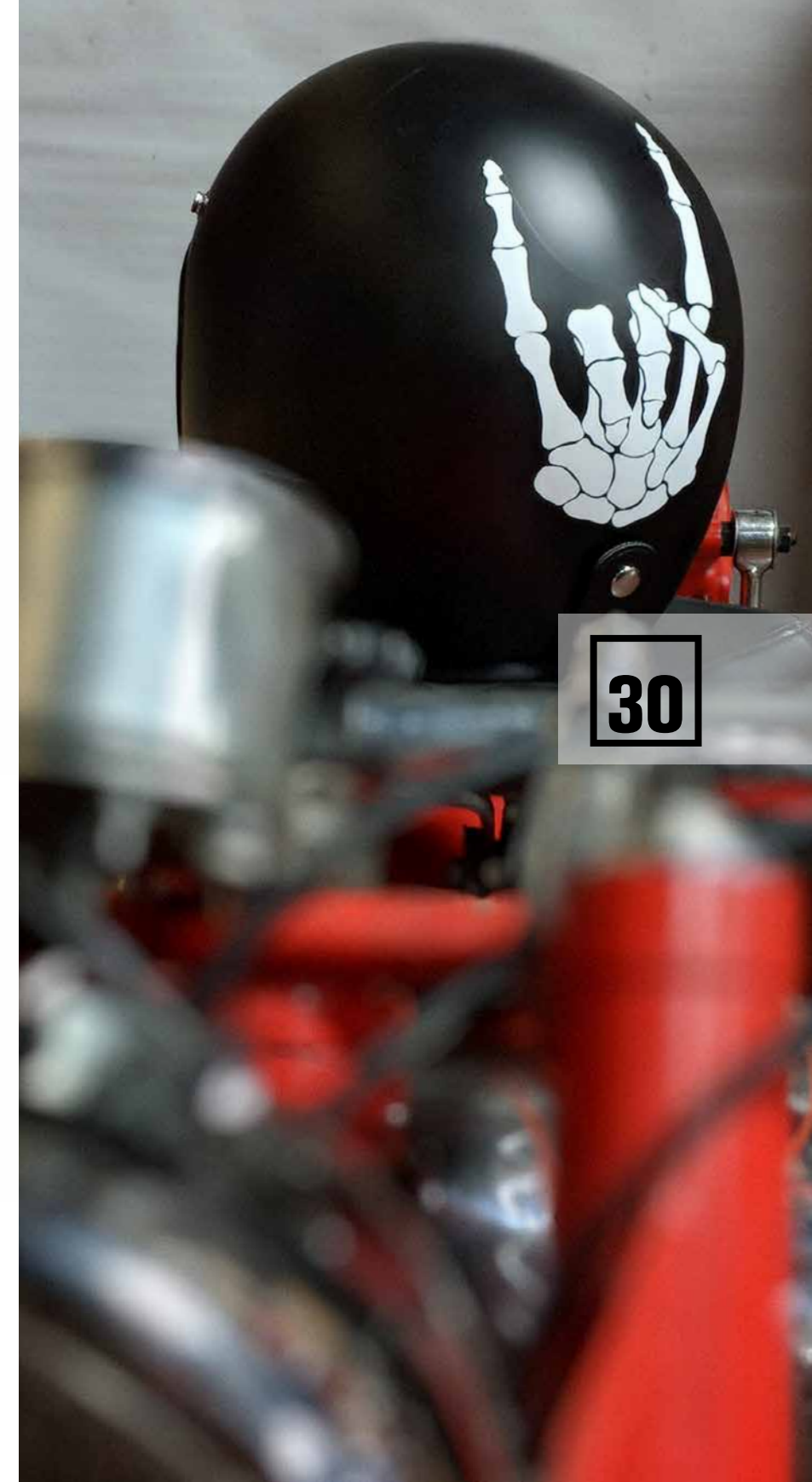
**T-50 BLACK FLAG**  
T5015FG  
XS - XXL



**T-50 CRANEO**  
T5003CR  
XS - XXL



**T-50 BONES**  
T5015BN  
XS - XXL







SHOWN WITH OPTIONAL SHIELD



**T-50 ROOTBEER MEGA FLAKE**  
T5034  
XS - XXL



**T-50 BUBBLE GUM MEGA FLAKE**  
T5033  
XS - XXL

32



**T-50 GOLD MEGA FLAKE**  
T5028  
XS - XXL



**T-50 LIMECYCLE MEGA FLAKE**  
T5035  
XS - XXL

3/4 CLASSIC

**T-50 CLASSIC**  
THE CLASSIC THE ORIGINAL.

BLACKED OUT AND STACKED WITH FEATURES, THE T-50 CLASSIC HAS ALL THE SAME COMFORT AND PREMIUM CONSTRUCTION AS THE ORIGINAL T-50 BUT COMES WITH AN ALL-BLACK INTERIOR AND BLACK TRIM FOR A CLASSIC, SUBDUED LOOK AND FEEL.

- MULTI-DENSITY EPS
- PADDED CHIN STRAP WITH D-RING CLOSURE
- REMOVABLE VISOR
- CERTIFIED DOT



SHOWN WITH YELLOW BUBBLE SHIELD

**T-50-CLASSIC MATTE BLACK**

T50C15

XS - XXL



**T-50-CLASSIC GLOSS BLACK**

T50C05

XS - XXL



# RETRO MOTO

NEW FOR 2019

## T-3

### THE NEW STANDARD

# FULL FACE

THE ALL NEW TORC T-3 IS A RETRO MOTO DESIGN. CLASSIC FULL-FACE MOTO STYLING COMBINES WITH MODERN MULTI-DENSITY EPS CONSTRUCTION, INCREDIBLE VENTILATION, A HIGH-QUALITY ULTRA-PLUSH INTERIOR.

- FRONT CHIN & FORHEAD VENTS WITH METAL MESH INTAKE AND EXHAUST VENTS
- REMOVABLE VISOR
- REMOVABLE PREMIUM FAUX SUEDE LINER
- PADDED CHIN STRAP WITH D-RING CLOSURE
- MULTI-DENSITY EPS
- COMPOSITE SHELL CONSTRUCTION
- CERTIFIED DOT & ECE 22.05

**NEW FOR 2019**



**VISOR VENTED FOR REDUCED DRAG**



**T-3 GLOSS BLACK**  
T305  
XS - XXL



**T-3 MATTE BLACK**  
T315  
XS - XXL





# Bluetooth™

## BLINC BLUETOOTH

OUR BLINC COMMUNICATION SYSTEM IS DESIGNED TO WORK JUST LIKE ALL OTHER BLUE WIRELESS SYSTEMS. WE DESIGNED IT TO BE BUILT INTO OUR HELMETS AND AS A RESULT THEY ARE PERFECT.

12 HOURS OF TALK TIME 150 HOURS OF STANDBY WITH ITS NOISE CANCELLING MIC WORKS PERFECT WITH ITS VOICE PROMPT DUAL SPEAKERS MAKE THIS THE PERFECT WIRELESS HELMET FOR THE LONG TRIP.

AVAILABLE ON THE **T-28B T-15B & T14B.**

**EASY CONNECTION WITH IOS & ANDROID PHONES.**

TALK TIME	<b>12 HRS</b>
STAND BY TIME	<b>150 HRS</b>
CONNECT TWO PHONES	<b>YES</b>
NOISE CANCELLATION MIC	<b>YES</b>
NOISE CANCELLATION FUNCTION	<b>YES</b>
DUAL SPEAKERS	<b>YES</b>
VOICE PROMPT	<b>YES</b>
BLUETOOTH VERSION	<b>3.0</b>

CALL ANSWER	<b>YES</b>
CALL REJECT	<b>YES</b>
LAST CALL REDIAL	<b>YES</b>
VOICE DIAL	<b>YES</b>
CALL OVERRIDE	<b>YES</b>



**SPORT**

**T-15**  
ROAD WORTHY FOR THE LONG HAUL.



INTRODUCING THE NEW TORC T-15—A RACE INSPIRED DESIGN WITH SUPERIOR AIR VENTILATION AND AERODYNAMIC REAR SPOILER THAT KEEPS THE HELMET STABLE DURING HIGHER SPEEDS. ALSO INCLUDES A BUILT-IN DROP-DOWN TINTED VISOR, WASHABLE AND REMOVABLE COOL MAX INTERIOR, AND A PREMIUM OPTICALLY CORRECT REPLACEABLE SHIELD.

- BUILT-IN SPOILER ELIMINATES WIND BUFFETING AND IMPROVES STABILITY AT SPEED
- ADJUSTABLE TOP AND CHIN VENTS
- WASHABLE, REMOVABLE COOL MAX LASER CONTOURED INNER COMFORT PADDING
- RACE INSPIRED DESIGN WITH SUPERIOR AIR VENTILATION
- REPLACEABLE, SCRATCH-RESISTANT AND FOG-FREE SHIELD WITH DROP DOWN SUNSCREEN
- ABS SHELL
- CERTIFIED DOT & ECE 22.05



**T-15 CHROME FLYING TIGER**  
T15CMFT  
T15BCMFT BLUETOOTH  
XS - XXL



**T-15 EDGE RED**  
T1505ERG  
T15B05EGR BLINC BLUETOOTH  
XS - XXL



**T-15 EDGE HI VIZ YELLOW**  
T1505EGH  
T15B05EGN BLINC BLUETOOTH  
XS - XXL



**T-15 HORIZON GREY** T1505HOG  
T15B05HOG BLUETOOTH  
XS - XXL



**T-15 HORIZON HI VIZ YELLOW**  
T1505HOH  
T15B05HOH BLUETOOTH  
XS - XXL







**T-15 CAPTIAN SHADOW MATTE**  
T1515CAPS  
T15B15CAPS BLUETOOTH  
XS - XXL



**T-15 GLOSS BLACK**  
T1505  
T15B05 BLUETOOTH  
XS - XXL



**T-15 MATTE BLACK**  
T1515  
T15B15 BLUETOOTH  
XS - XXL

**T-15 CAPTIAN SHADOW GLOSS**  
T1505CAPS  
T15B05CAPS BLUETOOTH  
XS - XXL



**SPORT**

**T-14**

**THE ALTERNATIVE.**

ANOTHER SPORT-INSPIRED, YET INCREDIBLY COMFORTABLE FULL-FACE REVOLUTION FROM TORC. THE T-14 COMBINES DUAL-DENSITY EPS AND A LASER-CONTOURED COMFORT LINER TO PROVIDE MAXIMUM COVERAGE AND COMFORT. ADD IN THE OPTICALLY CORRECT FLAT-PANEL SHIELD AND INTEGRATED DROP-DOWN SUN VISOR AND THE T-14 STARTS LOOKING MORE PREMIUM THAN EVER. AND THAT'S BEFORE WE TALK ABOUT THE OPTIONAL BLINC COMMUNICATION SYSTEM. TRY A T-14 TODAY.

- ANTI-FOG & ANTI-SCRATCH SHIELD OPTICALLY CORRECT REPLACEABLE SHIELD
- BREATH DEFLECTOR
- REMOVABLE & WASHABLE LASER CONTOURED LINER
- PADDED CHIN STRAP WITH D-RING CLOSURE
- GREAT STYLE AND COMFORT WITH AFFORDABLE PRICE
- CERTIFIED DOT & ECE 22.05

**50**



**T-14 SCRAMBLE RED**  
T1415SBR  
T14B15SBR BLUETOOTH  
XS - XXL



**T-14 SCRAMBLE BLUE**  
T1415SCB  
T14B15SCB BLUETOOTH  
XS - XXL



**T-14 SCRAMBLE HI VIZ YELLOW**  
T1415SBH  
T14B15SBH BLUETOOTH  
XS - XXL



**T-14 SCRAMBLE GREY**  
T1415SBG  
T14B15BGR BLUETOOTH  
XS - XXL



**DROP DOWN TINTED SHEILD**



**T-14 BLACK FLAG**  
T1415FG  
T14B15FG BLUETOOTH  
XS - XXL



**T-14 NUKE**  
T1417NK  
T14B17NK BLUETOOTH  
XS - XXL



**T-14 FORCE**  
T1415FC  
T14B15FC BLUETOOTH  
XS - XXL



**T-14 SS**  
T1415SSPK  
T14B15SSPK BLUETOOTH  
XS - XXL



**T-14 STRYKER**  
T1415SK1  
T14B15SK1 BLUETOOTH  
XS - XXL



**T-14 BULLHEAD**  
T1415BH  
T14B15BH BLUETOOTH  
XS - XXL





**T-14 STREAMLINE**  
T1415SL1  
T14B15SL1 BLUETOOTH  
XS - XXL



**T-14 STREAMLINE GREY**  
T1415SL2  
T14B15SL2 BLUETOOTH  
XS - XXL



**T-14 MATTE BLACK**  
T1415  
T14B15 BLUETOOTH  
XS - XXL



**T-14 WINGS**  
T1415WS  
T14B15WS BLUETOOTH  
XS - XXL



**T-14 GLOSS BLACK**  
T1405  
T14B05 BLUETOOTH  
XS - XXL

# MODULAR

## T-28

### ALL SEASON MODULAR HELMET.

THE T-28 REPRESENTS A UNIQUE COMBINATION OF SPORTINESS, VERSATILITY AND COMFORT WITH THE CONVENIENCE OF A ONE-BUTTON-LATCH MODULAR DESIGN IN A LIGHTWEIGHT HELMET. IN ADDITION, THE T-28 FEATURES A DROP-DOWN SUN SHIELD AND HIGHLY ADJUSTABLE FLOW-THROUGH VENTILATION SYSTEM.

- SUPER LIGHTWEIGHT MODULAR DESIGNED HELMET
- ONE BUTTON LATCH SYSTEM
- FLOW THROUGH CONTROLLED VENTILATION
- WASHABLE, REMOVABLE COOL MAX LASER CONTOURED LINER
- ANTI-FOG & ANTI-SCRATCH SHIELD
- DROP DOWN SUN VISOR
- CERTIFIED DOT & ECE 22.05

58



**T-28 VAPOR HI-VIZ YELLOW**

T2815VP1  
T28B15VP1 BLUETOOTH  
XS - XXL



**T-28 VAPOR BLUE**

T2815VP4  
T28B15VP4 BLUETOOTH  
XS - XXL



**T-28 UNITED SILVER**

T2823  
T28B23 BLUETOOTH  
XS - XXL



**T-28 GLOSS BLACK**

T2805  
T28B05 BLUETOOTH  
XS - XXL



**T-28 VAPOR ORANGE**

T2815VP2  
T28B15VP2 BLUETOOTH  
XS - XXL



**T-28 VAPOR RED**

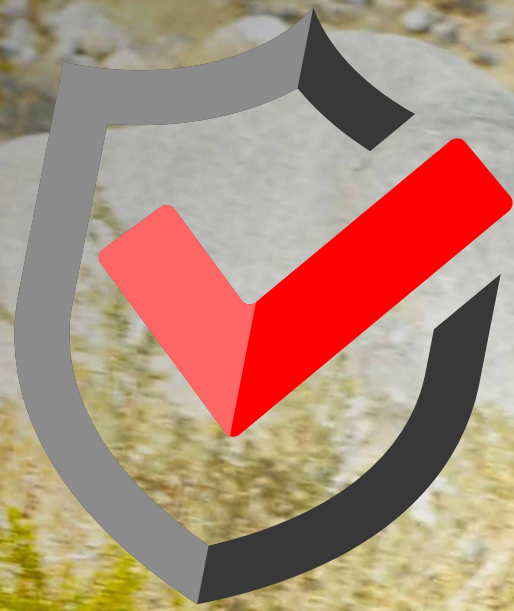
T2815VP3  
T28B15VP3 BLUETOOTH  
XS - XXL



**T-28 MATTE BLACK**

T2815  
T28B15 BLUETOOTH  
XS - XXL





**DOT**  
**CERTIFIED**  
LOW PROFILE HALF SHELL

**HALF SHELL**

**T-5**  
**BREAKING THE MOLD OF THE OLD.**

T-5 IS PUTTING A QUALITY STANDARD IN THE HALF-SHELL HELMET MARKET. WITH AN ULTRA-LOW PROFILE DESIGNED TO SIT LOW ON YOUR HEAD FOR EXCEPTIONAL FIT AND COVERAGE, THE TRULY DOT-CERTIFIED T-5 ADDS AN INCREDIBLY COMFORTABLE, REMOVABLE, AND WASHABLE LINER TO THE MINIMALIST HELMET GAME. COMPOSITE FIBERGLASS, CONSTRUCTION FOR EXCEPTIONAL PROTECTION. TOTAL GAME CHANGER.

- PREMIUM FAUX SUEDE LINER
- REMOVABLE PREMIUM FAUX SUEDE LINER
- PADDED CHIN STRAP WITH D-RING CLOSURE
- MULTI-DENSITY EPS
- COMPOSITE SHELL CONSTRUCTION
- CERTIFIED DOT

**62**





T-5 MATTE BLACK CHROME  
T515 CHR  
XS - XXXL



T-5 GLOSS BLACK CHROME  
T505CHR  
XS - XXXL



T-5 GLOSS BLACK BROWN  
T505BRZ  
XS - XXXL



T-5 MATTE BLACK BROWN  
T515BRZ  
XS - XXXL



# HALF SHELL

## **T-55** ENDLESS JOURNEYS.

WELCOME TO THE NEXT-GENERATION OF HALF-SHELL HELMETS. THE T-55 FEATURES MASSIVE TECH AND STYLE IN A DOT-CERTIFIED HELMET. FROM ITS MULTI-DENSITY EPS LINER AND REMOVABLE AND WASHABLE COMFORT LINER TO A UNIQUE INTEGRATED DROP-DOWN INTERNAL SUN VISOR, THE T-55 PUTS FUNCTION AND FASHION ON TOP.

- INTEGRATED DROP-DOWN INTERNAL SUN VISOR.
- REMOVABLE & WASHABLE LINER
- PADDED CHIN STRAP WITH D-RING CLOSURE
- MULTI-DENSITY EPS
- ABS SHELL
- CERTIFIED DOT



**T-55 BLACK FLAG**  
T5515FG  
XS - XXL



**DROP DOWN TINTED SHEILD**



**T-55 GLOSS BLACK**  
T5505  
XS - XXL



**T-55 MATTE BLACK**  
T5515  
XS - XXL



**T-55 GLOSS WHITE**  
T5502  
XS - XXL



**T-55 LUCKY 13 GARAGE**  
T5515LG  
XS - XXL



**T-55 BORN TO RIDE**  
T5515BTR  
XS - XXL



**T-55 LUCKY 13 TANK**  
T5515TK  
XS - XXL



**T-55 BULLHEAD**  
T5515BH  
XS - XXL





70

# HALF SHELL

**T-53**  
RIDE ON.

THE SLIM FIT, LOW PROFILE CLASSIC. THE T-53 FROM TORC IS YOUR ULTIMATE LOW-PROFILE HALF-SHELL HELMET. BUT IT'S NOT JUST GOOD LOOKS. WITH ITS DUAL-DENSITY EPS, PROVIDES GREAT PROTECTION AND COMFORT AT AN AFFORDABLE PRICE.

- AFFORDABLE PRICE
- LOW PROFILE DESIGN
- REMOVABLE VISOR
- PADDED CHIN STRAP WITH D-RING CLOSURE
- MULTI-DENSITY EPS
- CERTIFIED DOT



**T-53 MATTE BLACK**  
T5315  
XS - XXL



**T-53 BLACK FLAG MATTE**  
T5315FG  
XS - XXL



**T-53 GLOSS BLACK**  
T5305  
XS - XXL





# GENUINE LEATHER

**TORC GLOVES**  
GET A GRIP

TORC GLOVES ARE A BUY ONCE BUY RIGHT PRODUCT SPECIFICALLY DESIGNED FOR TODAY'S RIDER WITHOUT BREAKING THE BANK. ALL GLOVES ARE CONSTRUCTED FROM PREMIUM GRADE MATERIALS WHILE DELICATELY BALANCING CLASSIC RETRO STYLING AND INCORPORATING MODERN TECHNOLOGY FOR MAXIMUM PROTECTION AND COMFORT. WHETHER YOU ARE TUCKED BEHIND A FARING OR RIDING FREE WITH YOUR ARMS IN THE AIR.

TORC GLOVES HAS SOMETHING FOR EVERYONE.



**VENICE GOLD**  
TG56VEN

- Classic Workmans Motorcycle glove
- Constructed of premium aniline goat leather with high tear and abrasion resistance
- 100% polyester lining for soft comfortable feel
- High tensile strength nylon stitches throughout
- Pre curved fingers for optimal comfort
- Waxed Finished
- Available in sizes XS - XXXL



**BLACK**  
TG55VEN



**BROWN**  
TG57VEN



**MELROSE**  
TG56MEL

- Mid Length Retro Super Cool Motorcycle glove
- Constructed of premium aniline goat leather with high tear and abrasion resistance
- 100% polyester lining for soft comfortable feel
- Leather reinforced palm
- High tensile strength nylon stitches throughout
- Internal thermol polymer alloy knuckle duster for added protection
- Pre curved fingers for optimal comfort
- Waxed Finished
- Available in sizes XS - XXXL



**GOLD**  
TG35MEL



**FAIRFAX**  
TG56FAI

- Mid Length Retro Super Cool Motorcycle glove
- Constructed of premium aniline goat leather with high tear and abrasion resistance
- 100% polyester lining for soft comfortable feel
- Leather reinforced palm
- High tensile strength nylon stitches throughout
- Internal thermol polymer alloy knuckle duster for added protection
- Pre curved fingers for optimal comfort
- Perforated leather for maximum air cooling
- Waxed Finished
- Available in sizes XS - XXXL



**BLACK**  
TG55FAI



**GRIFFITH PARK**  
TG57GRI

- Mid Length Classic Retro Street Motorcycle glove
- Constructed of premium aniline goat leather with high tear and abrasion resistance
- 100% polyester lining for soft comfortable feel
- Leather reinforced palm
- High tensile strength nylon stitches throughout
- Pre curved fingers for optimal comfort
- YKK side zipper
- Waxed Finished
- Available in sizes XS - XXXL



**BLACK**  
TG55GRI



**MALIBU**  
TG55MAL

- Classic Workmans Motorcycle glove
- Constructed of premium aniline goat leather with high tear and abrasion resistance
- 100% polyester lining for soft comfortable feel
- High tensile strength nylon stitches throughout
- Pre curved fingers for optimal comfort
- Waxed Finished
- Available in sizes XS - XXXL



**WILSHIRE**  
TG55WIL

- Mid Length Retro Super Cool Motorcycle glove
- Constructed of premium aniline goat leather with high tear and abrasion resistance
- 100% polyester lining for soft comfortable feel
- Leather reinforced palm
- High tensile strength nylon stitches throughout
- Internal thermol polymer alloy knuckle duster for added protection
- Pre curved fingers for optimal comfort
- Waxed Finished
- Available in sizes XS - XXXL



**76**



**PICO**  
TG55PIC

- Mid Length Motorcycle glove
- Constructed of premium aniline goat leather with high tear and abrasion resistance
- 100% polyester lining for soft comfortable feel
- Real Carbon molded knuckle dusters for extra protection figure jewels
- Silicone reinforced palm and other key abrasion areas
- Dual layer leather panels in knuckle area for the finest non binding fit possible
- Precurved fingers with accordin pleats for snug and comfortable fit
- High tensile strength nylon stitches throughout
- Perferated leather in key areas for maximum cooling



**HOLLYWOOD**  
TG56HOL

- Old School Workmans Motorcycle glove
- Constructed of premium aniline goat leather with high tear and abrasion resistance
- 100% polyester lining for soft comfortable feel
- High tensile strength nylon stitches throughout
- Precurved fingers with accordin pleats for snug and comfortable fit
- Cross hatched 11 Oz. Denim. (Wears and fades like your classic denim jeans)
- Waxed Finished
- Available in sizes XS - XXXL



**BLACK**  
TG57HOL



**VENTURA**  
TG57TUR



- Mid Length Retro Super Cool Motorcycle glove
- Constructed of premium aniline goat leather with high tear and abrasion resistance
- 100% polyester lining for soft comfortable feel
- Leather reinforced palm
- High tensile strength nylon stitches throughout
- Internal thermol polymer alloy knuckle duster for added protection
- Pre curved fingers for optimal comfort
- Perforated leather for maximum air cooling
- Waxed Finished
- Available in sizes XS - XXXL



**FULLERTON**  
TG56FUL

- Mid Length Classic Retro Street Motorcycle glove
- Constructed of premium aniline goat leather with high tear and abrasion resistance
- 100% polyester lining for soft comfortable feel
- High tensile strength nylon stitches throughout
- Precurved fingers with accordin pleats for snug and comfortable fit
- Internal thermol polymer alloy knuckle duster for added protection
- Single density foam pads for added protection and comfort
- Perforated leather for maximum air cooling
- YKK side zipper
- Waxed Finished
- Available in sizes XS - XXXL



**BLACK**  
TG55TUR



**BLACK**  
TG57FUL



**RENO**  
TG55REN

- Mid Length Classic Retro Street Motorcycle glove
- Constructed of premium aniline goat leather with high tear and abrasion resistance
- 100% polyester lining for soft comfortable feel
- Leather reinforced palm
- High tensile strength nylon stitches throughout
- Pre curved fingers for optimal comfort
- YKK side zipper
- Waxed Finished
- Available in sizes XS - XXXL



**OXNARD**  
TG55OXN

- Classic Shorty Motorcycle glove
- Constructed of premium aniline goat leather with high tear and abrasion resistance
- 100% polyester lining for soft comfortable feel
- High tensile strength nylon stitches throughout
- Single density foam for added knuckle and palm for maximum comfort and protection
- High tensile strength nylon stitches throughout
- Perforated leather in key ventilation areas
- Waxed Finished
- Available in sizes XS - XXXL







**CAJON**  
TG57CAJ

- Mid Length Retro Super Cool Motorcycle glove
- Constructed of premium aniline goat leather with high tear and abrasion resistance
- 100% polyester lining for soft comfortable feel
- Leather reinforced palm
- High tensile strength nylon stitches throughout
- Internal thermol polymer alloy knuckle duster for added protection
- Pre curved fingers for optimal comfort
- Perforated leather for maximum air cooling
- Waxed Finished
- Available in sizes XS - XXXL



**BLACK**  
TG55CAJ



**DONNER**  
TG561DON

- Extended Length Motorcycle glove
- Constructed of premium aniline goat leather with high tear and abrasion resistance
- Polyester and Fleece lining for soft comfortable feel
- High tensile strength nylon stitches throughout
- Precurved fingers with accordian pleats for snug and comfortable fit
- YKK side zipper
- Waxed finished
- Available in sizes XS - XXXL



**BLACK**  
TG60DON



**KANAN**  
TG55KAN

- Mid Length Retro Super Cool Motorcycle glove
- Constructed of premium aniline goat leather with high tear and abrasion resistance
- 100% polyester lining for soft comfortable feel
- High tensile strength nylon stitches throughout
- Precurved fingers with accordian pleats for snug and comfortable fit
- Water resistant waxed cotton
- Internal thermol polymer alloy knuckle duster for added protection
- Single density foam pads for added protection and comfort
- YKK side zipper and adjustable wrist strap



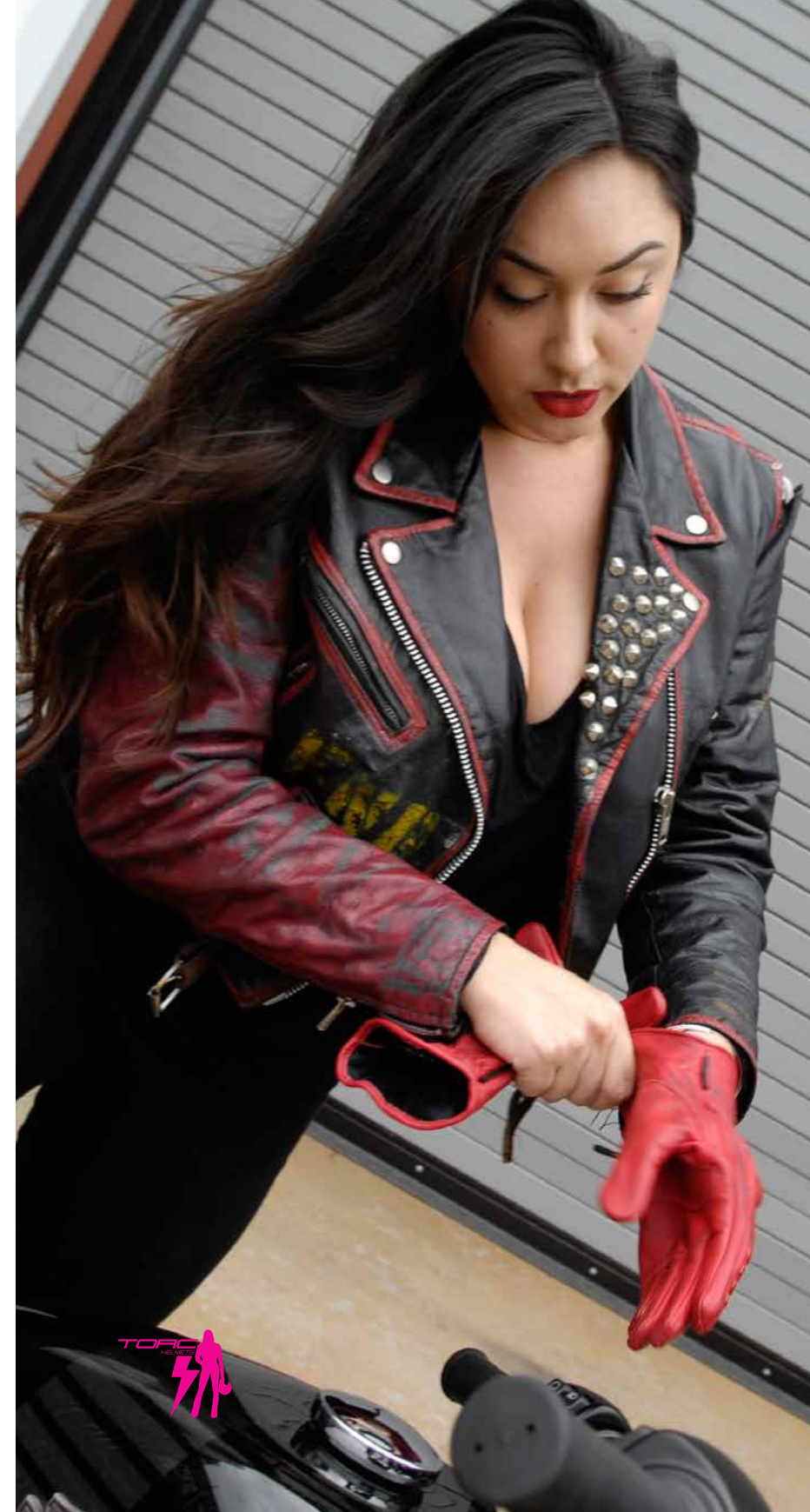
**SILVERLAKE**  
TG56SIL

- Mid Length Retro Super Cool Motorcycle glove
- Constructed of premium aniline goat leather with high tear and abrasion resistance
- 100% polyester lining for soft comfortable feel
- Leather reinforced palm
- High tensile strength nylon stitches throughout
- Internal thermol polymer alloy knuckle duster for added protection
- Pre curved fingers for optimal comfort
- Waxed Finished
- Available in sizes XS - XXXL



**BLACK**  
TG55SIL

**BROWN**  
TG57SIL



**SANTA MONICA**  
TG55SAN1

- Mid Length Ladies Motorcycle glove
- Constructed of premium aniline goat leather with high tear and abrasion resistance
- 100% polyester lining for soft comfortable feel
- Leather reinforced palm and thumb
- High tensile strength nylon stitches throughout
- Waxed Finished
- Available in sizes XS - XL



**RED**  
TG55SAN2



**GREY**  
TG55SAN3



**BEVERLY HILLS**  
TG58BEV

- Mid Length Ladies Motorcycle glove
- Constructed of premium aniline goat leather with high tear and abrasion resistance
- 100% polyester lining for soft comfortable feel
- Leather reinforced palm and thumb
- High tensile strength nylon stitches throughout
- YKK side zipper
- Internal thermol polymer alloy knuckle duster for added protection
- Waxed Finished
- Available in sizes XS - XL



**KHAKI**  
TG59BEV



**BLACK**  
TG55BEV



**CARSON**  
TG56CAR

- Mid Length Retro Super Cool Motorcycle glove
- Constructed of premium aniline goat leather with high tear and abrasion resistance
- 100% polyester lining for soft comfortable feel
- Leather reinforced palm
- Pre curved fingers for optimal comfort
- Perforated leather for maximum air cooling
- Waxed Finished
- Available in sizes XS - XXXL



**BLACK**  
TG55CAR



**BROWN**  
TG57CAR



**WITTIER**  
TG58WHI

- Classic Workmans Motorcycle glove
- Constructed of premium aniline goat leather with high tear and abrasion resistance
- 100% polyester lining for soft comfortable feel
- High tensile strength nylon stitches throughout
- Pre curved fingers for optimal comfort
- Waxed Finished
- Available in sizes XS - XXXL



**BROWN**  
TG56WHI



**HAWTHORNE**  
TG55HAW

- Classic Workmans Motorcycle glove
- Constructed of premium aniline goat leather with high tear and abrasion resistance
- 100% polyester lining for soft comfortable feel
- High tensile strength nylon stitches throughout
- Pre curved fingers for optimal comfort
- Waxed Finished
- Available in sizes XS - XXXL



**GOLD**  
TG56HAW



**DOWNEY**  
TG59DOW

- Mid Length Classic Retro Street Motorcycle glove
- Constructed of premium aniline goat leather with high tear and abrasion resistance
- 100% polyester lining for soft comfortable feel
- Leather reinforced palm
- High tensile strength nylon stitches throughout
- Pre curved fingers for optimal comfort
- YKK side zipper
- Waxed Finished
- Available in sizes XS - XXXL



**RED**  
TG58DOW



**AMERICANA**  
TG62AME

- Mid Length Retro Super Cool Motorcycle glove
- Constructed of premium aniline goat leather with high tear and abrasion resistance
- 100% polyester lining for soft comfortable feel
- Leather reinforced palm
- High tensile strength nylon stitches throughout
- Internal thermol polymer alloy knuckle duster for added protection
- Pre curved fingers for optimal comfort
- Waxed Finished
- Available in sizes XS - XXXL



**SUNSET**  
TG56SUN

- Mid Length Retro Super Cool Motorcycle glove
- Constructed of premium aniline goat leather with high tear and abrasion resistance
- 100% polyester lining for soft comfortable feel
- Leather reinforced palm
- High tensile strength nylon stitches throughout
- Internal thermol polymer alloy knuckle duster for added protection
- Pre curved fingers for optimal comfort
- Waxed Finished
- Available in sizes XS - XXXL



**RED**  
TG58SUN





# SHIELDS & ACCESSORIES

TORC T-50 SPARKED A REVOLUTION WITH THE 3 1/4 SHELL. AND MORE THAN DECADE LATER, IT'S STILL THE BENCHMARK OF THE SEGMENT. FOREVER EVOLVING, ITS STYLE AND EXCEPTIONAL FIT AND COMFORT MAKES IT THE MOST POPULAR MODEL IN THE LINEUP.



### T-50 BUBBLE SHIELD

T50SLD ADD TINT

COLORS  
CHROME

- CS
- DS
- LS
- YL
- CM



### T-28 SHIELD

T28SLD ADD TINT

COLORS  
CHROME

- CS
- DS
- LS
- CM



### T-1 SHIELD

T1SLD ADD TINT

COLORS  
CHROME

- CS
- DS
- LS
- CM



### T-14 SHIELD

T14SLD ADD TINT

COLORS  
CHROME

- CS
- DS
- LS
- CM



### T-15 SHIELD

T15SLD ADD TINT

COLORS  
CHROME

- CS
- DS
- LS
- CM



### T-28 CLEAR ELECTRIC SHIELD

T28SLDDES



### T-28 CLEAR DUAL PANE SHIELD

T28SLDDP  
COLORS



### T-28 BREATH BOX

T28BB  
COLORS



**TORC MASK**  
TG56VEN  
• Classic



WRAP THE MEASURING TAPE AROUND THE FULLEST PART OF THE HEAD - THIS WILL BE JUST ABOVE THE EARS AND ABOUT A HALF-INCH ABOVE THE EYEBROWS FOR MOST - AND TAKE THE MEASUREMENT AT THE FOREHEAD. TO GET THE MOST ACCURATE MEASURE, HAVE HELP WITH THIS STEP.

**HELMET SIZE CHART**

SIZE	XSMALL	SMALL	MEDIUM	LARGE	XLARGE	XXLARGE	XXXLARGE
INCH	20 <sup>7/8</sup> • 21 <sup>1/4</sup>	21 <sup>5/8</sup> • 22	21 <sup>5/8</sup> • 22	23 <sup>1/4</sup> • 23 <sup>5/8</sup>	24 • 24 <sup>3/8</sup>	24 <sup>3/4</sup>	25 <sup>1/4</sup>
CM	53•54	55•56	57•58	59•60	61•62	63	64

86



TORC  
HELMETS  
**H&H**  
SPORTS PROTECTION USA INC.

Our website offers you a wide variety of motorcycle helmets at affordable prices.