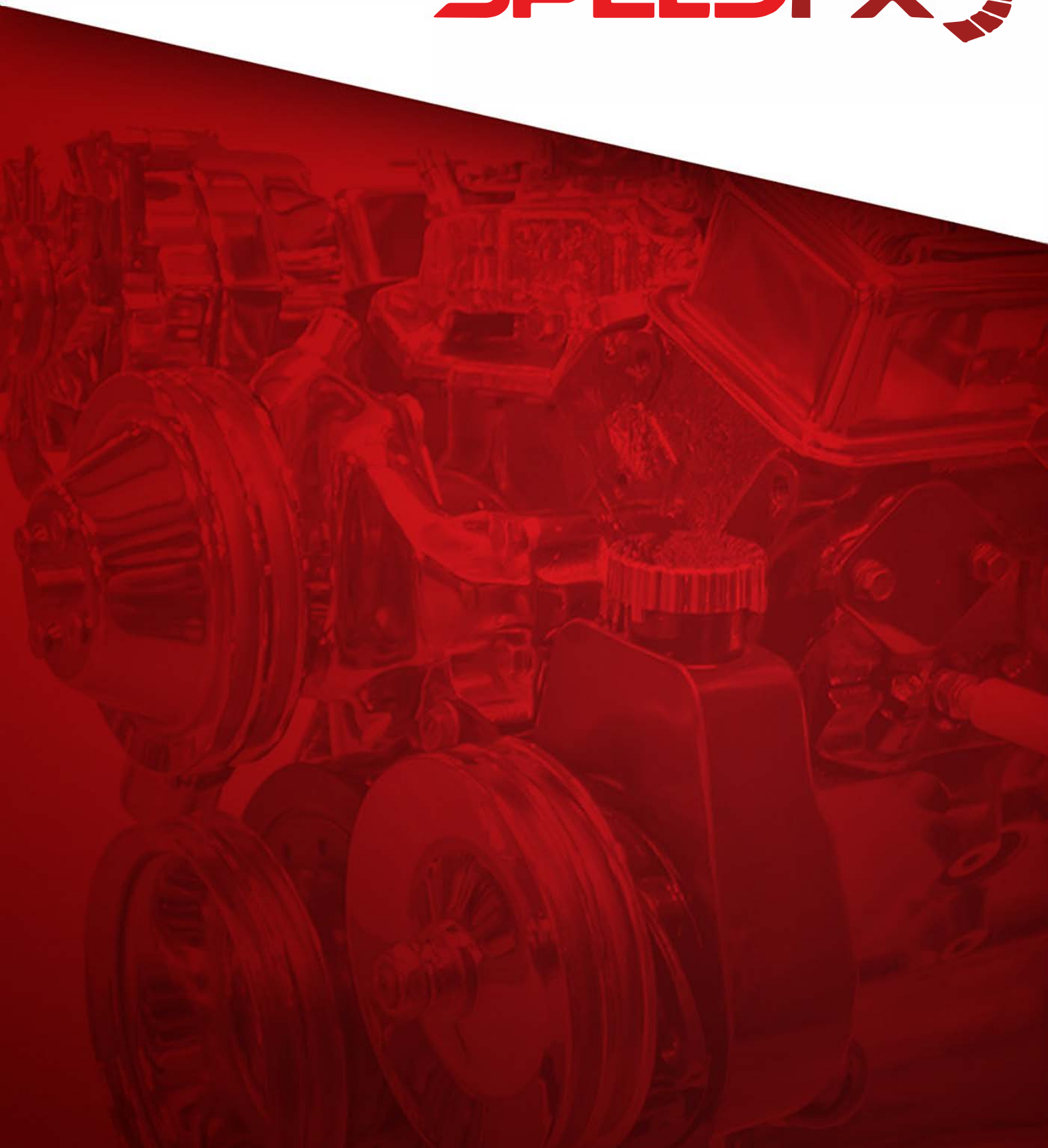




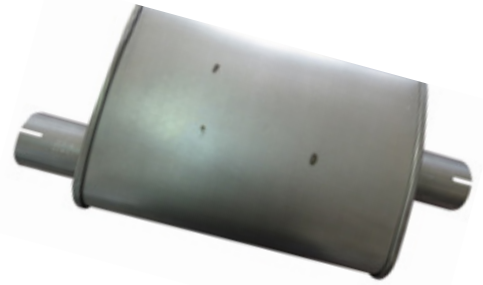
SPEEDFX[®]



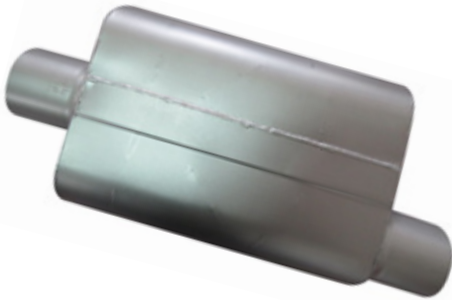
TWENTYEIGHTEEN

ALUMINIZED STEEL MUFFLERS

- Universal fit
- Natural & silver, aluminized steel-painted finish
- Oval-shaped
- Limited 90 day warranty



Part # 2201AS



Part # 3005AS



Part # 3006AS



Part # 3008AS

Part #	Item Description	Inlet Position	ID (Inch)	Outlet Position	OD (Inch)	Case Diameter	Case Length	Overall Length
2201AS	Rolled edge, Natural Finish	Offset	2-1/4"	Center	2-1/4"	9.5" X 4.5"	14"	20"
2202AS	Rolled edge, Natural Finish	Offset	2-1/4"	Offset	2-1/4"	9.5" X 4.5"	14"	20"
2501AS	Rolled edge, Natural Finish	Offset	2-1/2"	Center	2-1/2"	9.5" X 4.5"	14"	20"
2502AS	Rolled edge, Natural Finish	Offset	2-1/2"	Offset	2-1/2"	9.5" X 4.5"	14"	20"
3001AS	Rolled edge, Natural Finish	Offset	3"	Center	3"	9.5" X 4.5"	14"	20"
3002AS	Rolled edge, Natural Finish	Offset	3"	Offset	3"	9.5" X 4.5"	14"	20"
2203AS	Welded edge, Silver Painted	Center	2-1/4"	Center	2-1/4"	9" X 4"	13"	19"
2204AS	Welded edge, Silver Painted	Offset	2-1/4"	Center	2-1/4"	9" X 4"	13"	19"
2205AS	Welded edge, Silver Painted	Center	2-1/4"	Offset	2-1/4"	9" X 4"	13"	19"
2206AS	Welded edge, Silver Painted	Offset	2-1/4"	Offset	2-1/4"	9" X 4"	13"	19"
2503AS	Welded edge, Silver Painted	Center	2-1/2"	Center	2-1/2"	9" X 4"	13"	19"
2504AS	Welded edge, Silver Painted	Offset	2-1/2"	Center	2-1/2"	9" X 4"	13"	19"
2505AS	Welded edge, Silver Painted	Center	2-1/2"	Offset	2-1/2"	9" X 4"	13"	19"
2506AS	Welded edge, Silver Painted	Offset	2-1/2"	Offset	2-1/2"	9" X 4"	13"	19"
3003AS	Welded edge, Silver Painted	Center	3"	Center	3"	9" X 4"	13"	19"
3004AS	Welded edge, Silver Painted	Offset	3"	Center	3"	9" X 4"	13"	19"
3005AS	Welded edge, Silver Painted	Center	3"	Offset	3"	9" X 4"	13"	19"
3006AS	Welded edge, Silver Painted	Offset	3"	Offset	3"	9" X 4"	13"	19"
3007AS	Welded edge, Silver Painted	Center	3"	Dual	3"	9" X 4"	13"	19"
3008AS	Welded edge, Silver Painted	Dual	3"	Offset	3"	9" X 4"	13"	19"

BLACK STEEL MUFFLERS

- Universal fit
- Black steel finish
- Made in the USA
- Limited 90 day warranty



Part # 424410

Features:
 Body height (inches): 4.00
 Body length (inches): 13.00
 Body width (inches): 9.75
 Finish: Black
 Inlet diameter (inches): 2.25
 Inlet position: Offset
 Material: Aluminized Steel
 Muffler series: 40 Series
 Outlet diameter (inches): 2.25
 Outlet position: Center
 Shape: Case
 Sound level: Aggressive Sound



Part # 425410

Features:
 Body height (inches): 4.00
 Body length (inches): 13.00
 Body width (inches): 9.75
 Finish: Black
 Inlet diameter (inches): 2.50
 Inlet position: Offset
 Material: Aluminized Steel
 Muffler series: 40 Series
 Outlet diameter (inches): 2.50
 Outlet position: Center
 Shape: Case
 Sound level: Aggressive Sound



Part # 425430

Features:
 Body height (inches): 4.00
 Body length (inches): 13.00
 Body width (inches): 9.75
 Finish: Black
 Inlet diameter (inches): 2.50
 Inlet position: Offset
 Material: Aluminized Steel
 Muffler series: 40 Series
 Outlet diameter (inches): 2.50
 Outlet position: Offset
 Shape: Case
 Sound level: Aggressive Sound



Part # 424430

Features:
 Body height (inches): 4.00
 Body length (inches): 13.00
 Body width (inches): 9.75
 Finish: Black
 Inlet diameter (inches): 2.25
 Inlet position: Offset
 Material: Aluminized Steel
 Muffler series: 40 Series
 Outlet diameter (inches): 2.25
 Outlet position: Offset
 Shape: Case
 Sound level: Aggressive Sound



Part # 4304020

Features:
 Body height (inches): 4.00
 Body length (inches): 13.00
 Body width (inches): 9.75
 Finish: Black
 Inlet diameter (inches): 3.00
 Inlet position: Center
 Material: Aluminized Steel
 Muffler series: 40 Series
 Outlet diameter (inches): 2.50
 Outlet position: Dual
 Shape: Case
 Sound level: Aggressive Sound



EXHAUST CLAMPS

- Material: T304SS
- Limited one year warranty



Part #	Diameter	Length
Lap-Joint Band Clamps (T304SS Belt, M10 Mild Zinc Nuts & Bolts, H Gasket is Zinc Alloy material)		
EA001	2.000"-2.125"	3.00"
EA002	2.250"-2.375"	3.00"
EA003	2.500"-2.625"	3.00"
EA004	3.000"-3.125"	3.00"
EA005	3.500"-3.625"	3.00"
EA006	4.000"-4.125"	3.00"
EA007	4.500"-4.625"	3.00"
EA008	5.000"-5.125"	3.00"
EA009	5.500"-5.625"	3.00"
EA010	6.000"-6.125"	3.00"

Part #	Diameter	Length
Stainless Steel U-Band Heavy Duty Clamps		
EA011	2.00"	--
EA012	2.25"	--
EA013	2.50"	--
EA014	3.00"	--
EA015	3.50"	--
EA016	4.00"	--
Band Clamps		
EA017	2.25"	1.22"
EA018	2.50"	1.22"
EA019	3.00"	1.22"
EA020	3.50"	1.22"
EA021	4.00"	1.22"
EA022	5.00"	1.22"

GLASSPACK MUFFLERS

- Heavy Gauge Steel Construction
- High Temperature Red Painted Finish
- Deep, Rich Sound
- Limited 90 day warranty



Part #	Inlet Dia	Inlet Position	Outlet Dia	Outlet Position	Body Dia	Body Length	Overall Length	Material	Finish
2010	2"	Center	2"	Center	3.5"	8"	14"	Mild Steel	Red Painted
2020	2"	Center	2"	Center	3.5"	18"	24"	Mild Steel	Red Painted
2030	2.25"	Center	2.25"	Center	3.5"	8"	14"	Mild Steel	Red Painted
2040	2.25"	Center	2.25"	Center	3.5"	18"	24"	Mild Steel	Red Painted
2050	2.5"	Center	2.5"	Center	3.5"	8"	14"	Mild Steel	Red Painted
2060	2.5"	Center	2.5"	Center	3.5"	18"	24"	Mild Steel	Red Painted
3010	3"	Center	3"	Center	4"	8"	14"	Mild Steel	Red Painted
3020	3"	Center	3"	Center	4"	18"	24"	Mild Steel	Red Painted



Straight Cut / Rolled Edge



Straight Cut / Beveled Edge



Angled Cut / Sharp Edge



Angled Cut / Beveled Edge

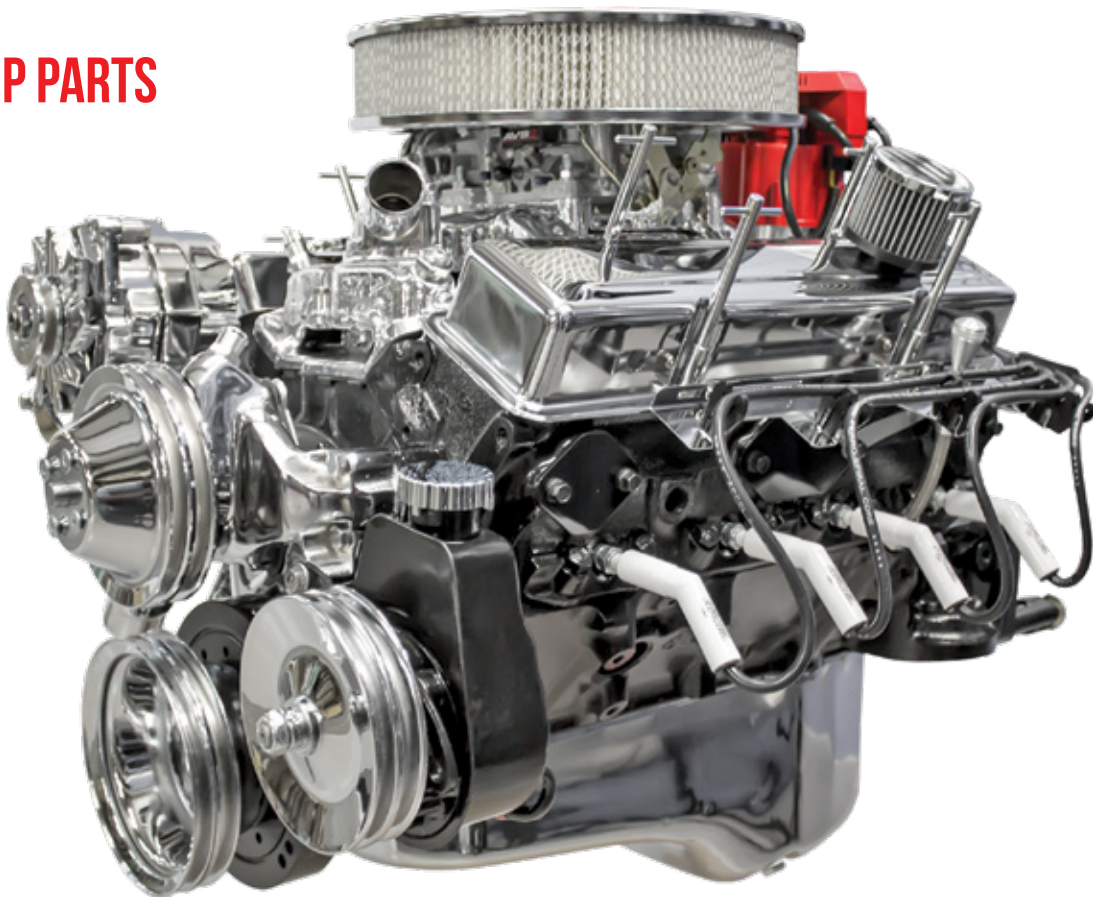
EXHAUST TIPS

- 304 stainless steel
- Polished silver or powder coated black finish
- Bolt-on installation
- Polished Finish - Limited lifetime warranty
- Powder Coat Finish - 1 year warranty

Part #	Finish	Color	Cut Type	Edge Type	Inlet Dia (Inch)	Outlet Dia (Inch)	Length (Inch)	Installation Type	Warranty
201S	Polished	Silver	Angled Cut	Rolled Edge	2.5 Inch	3 Inch	7 Inch	Bolt-On	Limited Lifetime
202B	Powder Coated	Black	Angled Cut	Beveled Edge	2.5 Inch	3.5 Inch	12 Inch	Bolt-On	1 year
203B	Powder Coated	Black	Angled Cut	Rolled Edge	2.5 Inch	3.5 Inch	12 Inch	Bolt-On	1 year
204S	Polished	Silver	Angled Cut	Rolled Edge	2.5 Inch	3.5 Inch	12 Inch	Bolt-On	Limited Lifetime
205S	Polished	Silver	Angled Cut	Sharp Edge	2.5 Inch	3.5 Inch	12 Inch	Bolt-On	Limited Lifetime
206S	Polished	Silver	Angled Cut	Sharp Edge	2.75 Inch	3.5 Inch	12 Inch	Bolt-On	Limited Lifetime
301S	Polished	Silver	Angled Cut	Rolled Edge	3 Inch	3.5 Inch	10 Inch	Bolt-On	Limited Lifetime
302S	Polished	Silver	Angled Cut	Sharp Edge	3 Inch	3.5 Inch	12 Inch	Bolt-On	Limited Lifetime
303S	Polished	Silver	Straight Cut	Rolled Edge	3.5 Inch	4 Inch	10 Inch	Bolt-On	Limited Lifetime
304S	Polished	Silver	Angled Cut	Sharp Edge	3.5 Inch	4 Inch	12 Inch	Bolt-On	Limited Lifetime
401B	Powder Coated	Black	Angled Cut	Beveled Edge	4 Inch	5 Inch	12 Inch	Bolt-On	1 year
402B	Powder Coated	Black	Angled Cut	Rolled Edge	4 Inch	5 Inch	12 Inch	Bolt-On	1 year
403S	Polished	Silver	Angled Cut	Beveled Edge	4 Inch	5 Inch	12 Inch	Bolt-On	Limited Lifetime
404S	Polished	Silver	Straight Cut	Beveled Edge	4 Inch	5 Inch	12 Inch	Bolt-On	Limited Lifetime
405S	Polished	Silver	Angled Cut	Rolled Edge	4 Inch	5 Inch	12 Inch	Bolt-On	Limited Lifetime
406S	Polished	Silver	Straight Cut	Rolled Edge	4 Inch	5 Inch	12 Inch	Bolt-On	Limited Lifetime
407S	Polished	Silver	Angled Cut	Sharp Edge	4 Inch	5 Inch	12 Inch	Bolt-On	Limited Lifetime
408B	Powder Coated	Black	Angled Cut	Beveled Edge	4 Inch	6 Inch	12 Inch	Bolt-On	1 year
409S	Polished	Silver	Angled Cut	Beveled Edge	4 Inch	6 Inch	12 Inch	Bolt-On	Limited Lifetime
410S	Polished	Silver	Angled Cut	Rolled Edge	4 Inch	6 Inch	12 Inch	Bolt-On	Limited Lifetime
411B	Powder Coated	Black	Angled Cut	Rolled Edge	4 Inch	6 Inch	18 Inch	Bolt-On	1 year
412S	Polished	Silver	Angled Cut	Rolled Edge	4 Inch	6 Inch	18 Inch	Bolt-On	Limited Lifetime
413S	Polished	Silver	Angled Cut	Rolled Edge	4 Inch	7 Inch	18 Inch	Bolt-On	Limited Lifetime
414B	Powder Coated	Black	Angled Cut	Rolled Edge	4 Inch	8 Inch	18 Inch	Bolt-On	1 year
415S	Polished	Silver	Angled Cut	Rolled Edge	4 Inch	8 Inch	18 Inch	Bolt-On	Limited Lifetime
501B	Powder Coated	Black	Angled Cut	Beveled Edge	5 Inch	6 Inch	12 Inch	Bolt-On	1 year
502S	Polished	Silver	Angled Cut	Beveled Edge	5 Inch	6 Inch	12 Inch	Bolt-On	Limited Lifetime
503S	Polished	Silver	Angled Cut	Rolled Edge	5 Inch	6 Inch	12 Inch	Bolt-On	Limited Lifetime
504S	Polished	Silver	Angled Cut	Rolled Edge	5 Inch	6 Inch	18 Inch	Bolt-On	Limited Lifetime
505B	Powder Coated	Black	Angled Cut	Rolled Edge	5 Inch	7 Inch	18 Inch	Bolt-On	1 year
506S	Polished	Silver	Angled Cut	Rolled Edge	5 Inch	7 Inch	18 Inch	Bolt-On	Limited Lifetime
507S	Polished	Silver	Angled Cut	Rolled Edge	5 Inch	8 Inch	18 Inch	Bolt-On	Limited Lifetime

ENGINE DRESS-UP PARTS & ACCESSORIES

SpeedFX has the quality chrome engine dress up parts and accessories your engine needs and you deserve to show off. Whether you are at a car show or in your drive way, make popping the hood of your prized possession a proud moment for the both of you.



AIR FILTERS

- Constructed with coated steel mesh for extra strength and durability
- Deep pleats in the double layered cotton create a
- 10 to 20 percent increase in filtration surface
- Engineered to maximize air flow while trapping harmful dirt particles
- Increased air flow and fuel mileage
- Washable—allowing filter to be reused over and over again
- Limited 90 day warranty



PART NUMBER	PART DESCRIPTION	LENGTH	WIDTH	HEIGHT	WEIGHT
472012	Round"	14"	14"	3"	1.4 lbs
472024	Cone ID=3.5"	5.5"	5.5"	6.5"	0.85 lbs
472030	Round	14"	14"	4"	1.39 lbs
472031	Cone ID=3.5"	5.5"	5.5"	9"	0.9 lbs
472037	Cone ID=4"	5.5"	5.5"	9"	1 lbs
472040	Cone ID=3"	5.5"	5.5"	9"	1 lbs
472047	Cone ID=3"	5.5"	5.5"	6"	0.75 lbs
472094	Clampon ID=2.5"	4"	4"	6"	0.7 lbs
472099	Cylinder ID=3"	4.75"	4.75"	6.75"	0.8 lbs
472114	Cone ID=4"	5.5"	5.5"	6"	1.1 lbs
472382	Cone ID=6"	7.5"	7.5"	8"	1.4 lbs
472453	Round	14"	14"	2"	1.42 lbs

AIR CLEANERS AND ACCESSORIES

SpeedFX air cleaners combine classic styling with modern, high performance technology. Each cleaner is cast from high quality aluminum and buffed to a mirror shine. All styles include an air filter, upper plate, lower plate, and hardware.



Part # 2400



Part # 2500



Part # 2600



Part # 4300



Part #4354



Part # 7090



Part # 7113



Part # 7117



Part # 7114



Part # 7149



Part # 7220



Part # 7228



Part # 7292



Part # 7298



Part # 7307



Part # 7308



Part # 7309



Part # 7310



Part # 7311



Part # 7168



Part # 5002R



Part # 5002W

Part #	DESCRIPTION
2400	Air Cleaner Kit, 14" Dia 2/ 4 Barrel Carburetor / with Filter (Silver Aluminum)
2500	Air Cleaner Kit, 15" Oval with Filter / Deep Finned Top (Silver Aluminum)
2600	Air Cleaner Kit, 12" Deep Fin Oval with Filter / (Silver Aluminum)
4300	Chrome Air Cleaner Kit, 14" X 3" with Muscle Car Top / Paper Filter / Recessed Base
4322	Black Air Cleaner Kit, 14" X 3" with Muscle Car Top / Paper Filter / Recessed Base
4354	Air Cleaner Kit, 14" X 3" with Performance Top / Paper Filter / Flat Base (Chrome Steel)
4355	Air Cleaner Kit, 6" X 2" with Flat Top / Paper Filter / Raised Base (Chrome Steel)
4446	Air Cleaner Kit, 6" X 2" with Muscle Car Top / Paper Filter / Raised Base (Chrome Steel)
4456	Air Cleaner Kit, 14" X 3" with Muscle Car "327" Logo Top / Paper Filter / Hi-Lip Base (Chrome Steel)
4466	Air Cleaner Kit, 14" X 3" with Muscle Car "350" Logo Top / Paper Filter / Hi-Lip Base (Chrome Steel)
4476	Air Cleaner Kit, 14" X 3" with Muscle Car "383" Logo Top / Paper Filter / Hi-Lip Base (Chrome Steel)
4486	Air Cleaner Kit, 14" X 3" with Muscle Car "396" Logo Top / Paper Filter / Hi-Lip Base (Chrome Steel)
4496	Air Cleaner Kit, 14" X 3" with Muscle Car "400" Logo Top / Paper Filter / Hi-Lip Base (Chrome Steel)
5105	Air Cleaner Kit, 14" X 3" with Muscle Car "454" Logo Top / Paper Filter / Hi-Lip Base (Chrome Steel)
5106	Filter, Cone Medium 6.7" Universal with 3", 3.5", 4" Inlet (Blue)
5107	Filter, Cone Medium 6.7" Universal with 3", 3.5", 4" Inlet (Red)
5108	Filter, Cone Medium 6.7" Universal with 3", 3.5", 4" Inlet (White)
7090	Filter, Cone Large 8.75" Universal with 3", 3.5", 4" Inlet (Red)
7113	Filter, Cone 6.5" Universal with 3" Inlet (Red)
7114	Filter, Panel 13.375" x 6.688" x 1.125" GM/Dodge/Jeep®/Mitsubishi 1987-2007 (Red)

Part #	DESCRIPTION
7117	Filter, Panel 13.375" x 6.688" x 1.125" Jeep® 1987-2000 (Red)
7149	Filter, Panel 13.375" x 6.688" x 1.125" Dodge 1994-2002 Ram (Red)
7151	Filter, Panel 13.375" x 6.688" x 1.125" Dodge 1997-2011 (Red)
7168	Air Cleaner Filter, 12" X 2" Oval (Paper)
7220	Air Cleaner Filter, 14" X 2" Round (Paper)
7228	Air Cleaner Filter, 14" X 3" Round (Paper)
7292	Air Cleaner Filter, 6" X 2-1/2" Round (Paper)
7298	Air Cleaner Filter, 4" X 2" Round (Paper)
7307	Air Cleaner Kit, 4" x 2" Deep Dish Top / Paper Filter / Flat Base (Chrome Steel)
7308	Air Cleaner Spacer, 1-5/8 Inch tall (Black Plastic)
7309	Wing Nut, Air Cleaner "Large Spinner" (Black/Chrome Steel)
7310	Air Cleaner Stud, 5-3/4" Offset with Hardware (White Zinc Steel)
7311	Smog PCV Tube, Universal with Hardware (Black Plastic)
4300BK	Air Cleaner Stud Extension, 1-1/4" (White Zinc Steel)
5002BL	Air Cleaner Riser, 3/4" Tall (Black Plastic)
5002R	Air Cleaner Riser, 1/2" Tall (Black Plastic)
5002W	Air Cleaner Riser, 2" Tall (Black Plastic)
5003R	Air Cleaner Adapter, 5-1/8" To 2-5/8" Neck (Black Plastic)
5011R	Air Cleaner Adapter, 5-1/8" To 3-1/16" Neck (Black Plastic)

Limited 90 day warranty

TIMING ACCESSORIES



Part # 7122



Part # 7197



Part # 7217



Part # 7265

Part #	DESCRIPTION
7122	Timing Chain Cover, SB Chevy with Seal / Gaskets / Hardware (Chrome Steel)
7197	Timing Tab, SB Chevy 283-400 6"~7" (Chrome Steel)
7217	Timing Tab, with Pointer 8" SB Chevy (Chrome Steel)

Part #	DESCRIPTION
7265	Timing Tab, BB Chevy 8" (Chrome Steel)
8421	Timing Tab, SB Chevy 283-400 6"~7" (Chrome Steel)

Limited 90 day warranty

PULLEYS & KITS



Part # 8947



Part # 8948



Part # 8952



Part # 8957



Part # 8960



Part # 8961



Part # 9123



Part # 9124



Part # 9818



Part # 9830

Part #	DESCRIPTION
8947	Pulley, Power Steering Early GM Double Groove (Chrome Steel)
8948	Pulley, Power Steering Early GM Single Groove (Chrome Steel)
8952	Pulley, Water Pump SB Chevy SWP Double Groove (Chrome Steel)
8954	Pulley, Water Pump SB Chevy LWP Single Groove (Chrome Steel)
8956	Pulley, Water Pump SB Chevy LWP Double Groove (Chrome Steel)
8957	Pulley, Crank SB Chevy LWP Double Groove (Chrome Steel)

Part #	DESCRIPTION
8960	Pulley, Water Pump BB Chevy LWP Double Groove (Chrome Steel)
8961	Pulley, Crank BB Chevy LWP Triple Groove (Chrome Steel)
9123	Fitting, Water Pump Chevy (Chrome Steel)
9124	Fitting, Intake Manifold Chevy (Chrome Steel)
9818	Bolt Kit, Water Pump Pulley Allen Head 4pc Kit (Chrome Steel)
9830	Bolt Kit, SB Chevy Intake Hex Head 12pc Kit (Chrome Steel)

Limited 90 day warranty

WATER NECKS



Part # 7240



Part # 7261



Part # 7286



Part # 8455



Part # 8456

Part #	DESCRIPTION
7240	Water Neck, Late Chevy O'Ring Style (Chrome Zinc Alloy)
7261	Water Neck, Oldsmobile 330-350-425-455 Gasket Style (Chrome Zinc Alloy)
72620	Water Neck, Ford 351C O'Ring Style (Chrome Zinc Alloy)
72850	Water Neck, Pontiac V8 O'Ring Style (Chrome Zinc Alloy)
7286	Water Neck, Mopar 273-440 Gasket Style (Chrome Zinc Alloy)
72870	Water Neck, Chevy Straight O'Ring Style (Chrome Zinc Alloy)

Part #	DESCRIPTION
72880	Water Neck, Chevy Angle O'Ring Style (Chrome Zinc Alloy)
72890	Water Neck, Ford 289-302, 351W O'Ring Style (Chrome Zinc Alloy)
8455	Water Neck, Polished Aluminum 45 Degree Swivel with Gasket fits all Small and Big Block Chevy V8
8456	Water Neck Polished Aluminum 90 Degree Swivel with Gasket fits all Small and Big Block Chevy V8
8459	Water Neck Polished Aluminum 15 Degree Swivel with Gasket fits all Small and Big Block Chevy V8

Limited 90 day warranty

ALTERNATORS, STARTERS, AND ACCESSORIES

ALTERNATORS

Excellent output at idle with proof of performance tag. Alternators have heavy-duty diodes and oversized bearings.



Part # 37127FX



Part # 9000FX



Part # 6067



Part # 6068



Part # 6069



Part # 6072



Part # 6073



Part # 6074



Part # 6076



Part # 6082



Part # 6087



Part # 300

HIGH TORQUE STARTERS

High torque performance starters are ideal for high compression engines that need lots of torque to turn over. They are also great at standing up to the heat of a performance engine compartment.

BATTERY DISCONNECT SWITCH

Disconnect your battery the quick and easy way. This disconnect switch allows you to power off your battery and prevent drained and dead batteries without the hassle of undoing the terminals every time.

Part #	DESCRIPTION
17127FX	Alternators, 65 Amps
17273FX	Alternators, 80 Amps
37127FX	Alternators, 100 Amps
7127FX	Alternators, 65 Amps
6067	Alternator Arm Bracket (Chrome Steel)
6068	Alternator / Generator Slide Bracket, SB Chevy (Chrome Steel)
6069	Alternator / Generator Header Bracket, SB Chevy (Chrome Steel)
6072	Alternator Bracket, SB Chevy "OEM" LWP (Chrome Steel)
6073	Alternator Bracket, SB Chevy "OEM" LWP (Chrome Steel)
6074	Alternator Bracket, BB Chevy "OEM" LWP (Chrome Steel)
6076	Alternator Bracket, 1969-75 SB Chevy & 1969-up BB Chevy Upper LWP (Chrome Steel)
6077	Alternator Bracket, 1976-86 SB Chevy Upper LWP (Chrome Steel)

Part #	DESCRIPTION
6079	Alternator Bracket, SB Chevy Low Mount (Chrome Steel)
6082	Alternator Bracket, 1965-73 SB Ford (Chrome Steel)
6087	Alternator Bracket, BB Chevy Lower LWP (Chrome Steel)
9000FX	Classic GM Small Block & BB V8 applications with a compression ratio under 11.0:1. 153 or 168 Tooth
9053FX	94-00 Dodge Ram 2500 & 3500 5.9L Diesel applications. 173 Tooth
9600FX	Classic GM SB & BB V8 applications with a compression ratio under 12.0:1. 158 or 163 Tooth
9603FX	Classic Ford Small Block V8 applications with a compression ratio under 12.0:1. 157 or 164 Tooth
9612FX	Chevrolet Ram Jet 350 / 502 Engines. 168 Tooth
300	1000 Rush Amps

Limited 90 day warranty

CARBURETOR ACCESSORIES



Part # 6048



Part # 6052



Part # 6056



Part # 6057



Part # 7604



Part # 7605



Part # 7623



Part # 7631



Part # 9009



Part # 9122



Part # 9127



Part # 9148



Part # 9149



Part # 9173



Part # 9174



Part # 9175



Part # 9217



Part # 9218



Part # 9219



Part # 9219-1



Part # 9270



Part # 9271



Part # 9274



Part # 9278



Part # 9279



Part # 9285



Part # 9715

Part #	DESCRIPTION
6048	Throttle Choke Cable, 6' (Braided Stainless Steel)
6052	Throttle Return Spring Bracket, with Dual Springs Kit (Chrome Steel)
6056	Throttle Return Spring Bracket, Holley Kit with Hardware (Chrome Steel)
6057	Throttle Return Bracket, Universal (Chrome Steel)
7604	Block Off Plate, BB Chevy Fuel Pump with Gasket & Hardware (Chrome Steel)
7605	Block Off Plate, SB Chevy Fuel Pump with Gasket & Hardware (Chrome Steel)
7623	Mounting Plate, Small Block Chevy Fuel Pump with Gasket & Hardware (Chrome Steel)
7631	Block-Off Plate, SB Chevy Fuel Pump E.G.R. Manifold with Gasket (Chrome Steel)
9009	Vacuum Advance Cap Kit Universal and fits GM Chevy Ford and Mopar
9122	Carb Stud Kit, 3-1/4" Long 4pc Set (White Zinc Steel)
9127	Carb Stud Kit, 1-5/8" Long 4pc Set (White Zinc Steel)
9128	Carb Stud Kit, 2" Long 4pc Set (White Zinc Steel)
9129	Carb Stud Kit, 2-1/2" Long 4pc Set (White Zinc Steel)
9148	Carburetor Adapter Kit, 4bbl to Small 4bbl 1/2" Ported with Gaskets/Hardware (Aluminum)

Part #	DESCRIPTION
9149	Carburetor Adapter Kit, Rochester 2bbl with Gaskets/Hardware (Aluminum)
9173	Gasket, Carb Base Holley/Carter ABF 4BBL Ported (Fibre)
9174	Gasket, Carb Base Holley 4BBL Open Center (Fibre)
9175	Gasket, Carb Base Edelbrock Rochester QuadraJet 4BBL Ported (Fiber)
9217	Carb Linkage Bracket, Standard Transmission (Chrome Steel)
9218	Carb Linkage Bracket, Automatic Transmission (Chrome Steel)
9219	Carb Linkage Plate, with Brackets (Chrome Steel)
9270	Fuel Filter, 3/8" Inlet/Outlet (Chrome Aluminum)
9271	Fuel Filter, 5/16" Inlet/Outlet (Chrome Steel With Glass)
9272	Fuel Filter, 3/8" Inlet/Outlet (Chrome Steel With Glass)
9274	Fuel Filter, 3/8" Inlet/Outlet (Chrome Steel)
9278	Fuel Line, Holley 9-3/16" (Chrome Steel)
9279	Fuel Line, Holley 8-21/32" (Chrome Steel)
9285	Carburetor Cover, 5-1/8" Neck with Hardware (Blue Plastic)
9715	Gauge, Fuel Pressure Mechanical 0-15 PSI Dry (Chrome Steel with White Face)
92191	Morse Cable Bracket (Chrome Steel)

Limited 90 Day Warranty

RADIATOR ACCESSORIES



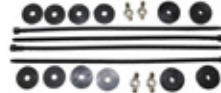
Part # 7610



Part # 7611



Part # 7613



Part # 7617



Part # 9963

Part #	DESCRIPTION
7610	Fan Shroud, 3" with Hardware Installation Kit (Chrome Steel)
7611	Fan Shroud, 5" with Hardware Installation Kit (Chrome Steel)
7613	Radiator Support, 1970-81 GM 28-11/16" X 5-1/2" with Hardware (Chrome Steel)
7615	Radiator Support, 31-1/8" X 5-3/4" with Hardware (Chrome Steel)

Part #	DESCRIPTION
7617	Fan Shroud Installation Kit (Black Plastic)
9963	Overflow Tank, Radiator 3" X 10" with Hardware (Polished Stainless Steel)
9973	Overflow Tank, Radiator 2" X 13" with Hardware (Polished Stainless Steel)

Limited 90 day warranty

STEERING AND BRAKE ACCESSORIES



Part # 6042



Part # 6054



Part # 6062



Part # 6064



Part # 9965

Part #	DESCRIPTION
9965	Overflow Tank, Power Steering or Brake Fluid 3" X 9" with Hardware (Chrome Aluminum)
6042	Power Steering Cap Cover, Chevy/GMC (Chrome Plastic)
9971BK	Vacuum Reservoir Tank, w/Hardware (Black Steel)

Part #	DESCRIPTION
6054	Master Cylinder Cover, AMC/Ford Single Bail 2-3/4" x 5-3/4" (Chrome Steel)
6063	Master Cylinder Cover, GM Dual Bail 3" x 5-3/4" (Chrome Steel)
6064	Master Cylinder Cover, GM Single Bail 2-3/8" x 5" (Chrome Steel)
6062	Master Cylinder Cover, GM Single Bail 3" x 5-5/8" (Chrome Steel)

Limited 90 day warranty

HEADER ACCESSORIES



Part # 3805



Part # 3806



Part # 3813



Part # 4930



Part # 6070

Part #	DESCRIPTION
3806	Gasket, Header Collector 2-1/2" Diameter 3-Hole (Fibre)
3813	Gasket, Header Collector 3" Diameter 3-Hole (Fibre)
6070	Header Reducer, 3" (Gold Zinc Steel)
3805	Header Reducers, 3" Diameter 3-Hole w/Gaskets & Hardware (White Zinc Steel)

Part #	DESCRIPTION
4940	Gasket, Differential Cover Dana 60 & Dana 70 10-Bolt (Fibre)
4930	Gasket, Differential Cover GM 12-Bolt (Fibre) Master Cylinder Cover, GM Single Bail 3" x 5-5/8" (Chrome Steel)

Limited 90 day warranty

DISTRIBUTORS AND ACCESSORIES

H.E.I. DISTRIBUTORS

- 6061-T6 polished billet shaft
- High strength and quality cap
- Solid brass terminals
- Fully adjustable vacuum advance
- Chromoly steel gear
- Easy one wire hook up
- High performance ignition module
- Limited 90 day warranty



Part # 3102



Part # 3104



Part # 3105



Part # 3106



Part # 3107



Part # 3108



Part # 6055



Part # 6058



Part # 6060



Part # 6061



Part # 7625



Part # 7626

Part #	DESCRIPTION
3100	H.E.I. Distributors, 262-454 Cu. In. Big Block / Small Block Chevrolet Engines - Red Cap
3101	H.E.I. Distributors, 289/302 cu. In. Small Block Ford Engines - Blue Cap
3102	H.E.I. Distributors, SB Ford 351W - Blue Cap
3103	H.E.I. Distributors, SB Ford 351C & 429 -460 - Blue Cap
3104	H.E.I. Distributors, Pontiac 5.7L/350 cu. In. 6.6L/400 cu. In. / 7.5L /455 cu.in - Black Cap
3105	H.E.I. Distributors, Chrysler Small Block V8 - Black Cap
3106	H.E.I. Distributors, SB Chrysler V8 - Black Cap
3107	H.E.I. Distributors, AMC Jeep® 290-401 Cubic Inch V8 Engine - Red Cap
3108	H.E.I. Distributors, AMC Jeep® 232-258 CLY/CJ5/CJ7/Wrangler / Wagoneer - Black Cap
3109	H.E.I. Distributors, Ford FE 352-428 - Black Cap

Part #	DESCRIPTION
3111	H.E.I. Distributors, Chevrolet 230/250/292/CLY -Black Cap
3112	H.E.I. Distributors, Chevrolet SB/BB/ 262-454 -V8 Electronic ready to use , Remote Mount Coil, Black Cap
6055	H.E.I. Distributors, Coil Bracket, Ford (Chrome Steel)
6058	H.E.I. Distributors, Advance Curve Kit, Chevy/ GM (Chrome Steel)
6060	H.E.I. Distributors, Coil Cover and Bracket Kit Chrome Steel
6061	H.E.I. Distributors, Coil Bracket, GM Stand-Up (Chrome Steel)
7606	H.E.I. Distributors, Distributor Hold Down, Chevy OEM Style with Hardware (Chrome Steel)
7625	H.E.I. Distributors, Distributor Hold Down, Ford with Hardware (Chrome Steel)
7626	H.E.I. Distributors, Distributor Hold Down Clamp, Chevy Competition Style (Chrome Steel)

HOOD PIN KITS



Part # 7702



Part # 7703



Part # 7708



Part # 7709



Part # 7712

Part #	DESCRIPTION
7702	Hood Pin Kit, with Hair Pins and Lanyards (Chrome Steel)
7703	Hood Pin Kit, with Hair Pins and Lanyards (Chrome Steel)
7708	Flip-Over Clips, 3/16" - 2Pcs (Chrome Steel)

Part #	DESCRIPTION
7709	Hood Lock Kit, Deluxe Style (Chrome Steel)
7712	Hood Pin Kit, with Flip-Over Clips 1/2 Inch Diameter Pins (Chrome Steel)

MISC



Part # 8215

Part #	DESCRIPTION
8215	Mirror, Interior Car/Truck (Polished Stainless Steel)

Limited 90 day warranty

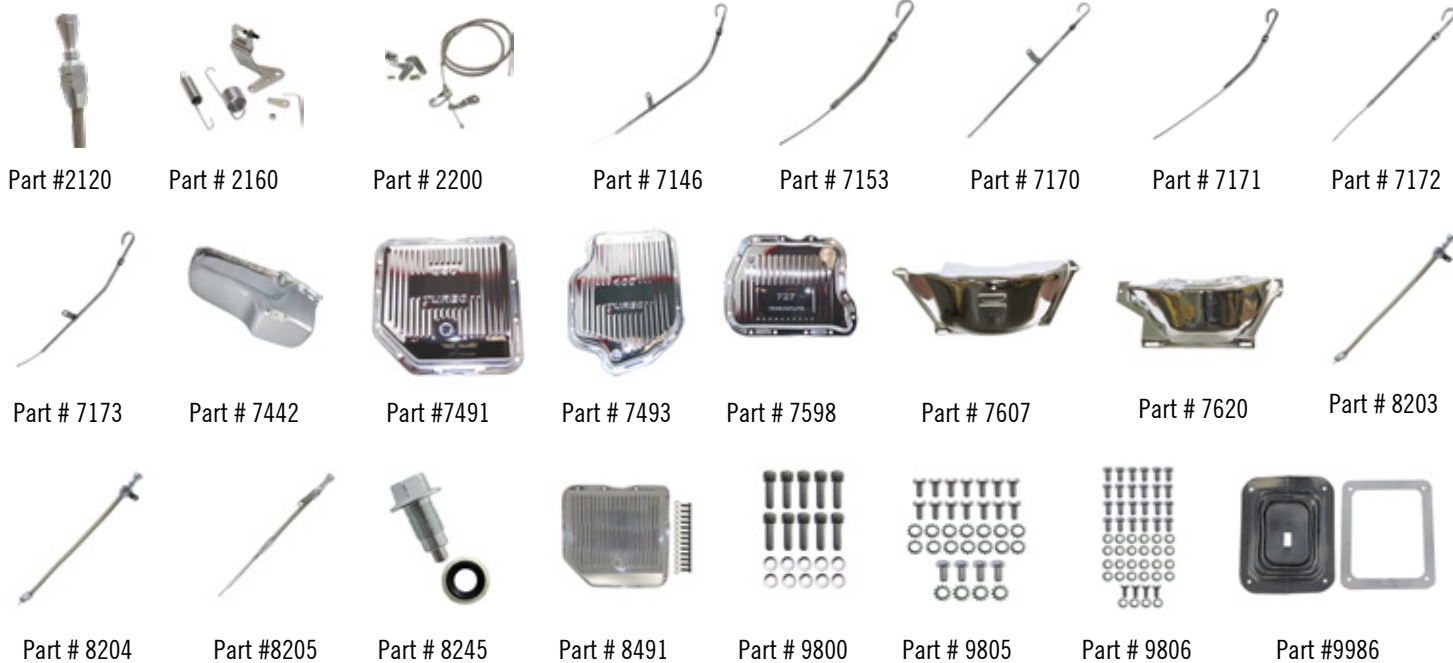
OIL / TRANSMISSION PANS AND ACCESSORIES

DIPSTICKS

These braided stainless steel dipsticks are available for engines and transmissions and feature two mounting styles - engine mount or firewall mount. Their flexible stainless design features the ability to customize its length and mount how and where you like. Comes with detailed instructions and backed by a limited lifetime warranty.

TRANSMISSION KICKDOWN CABLES

Replace your old, worn out kickdown cable with a quality, brand-new replacement. All needed hardware is included.



Part #	DESCRIPTION
2120	Dipsticks, Small Block Chevrolet Engine (1979 and Earlier)
2130	Dipsticks, Ford 302 , Engine
2133	Dipsticks, Big Block Chevrolet Engine
2140	Dipsticks, GM LS1, Engine
2144	Dipsticks, Small Block Chevrolet (1980-Up)
2150	Dipsticks, Ford C4, Transmission
2160	Dipsticks, GM Applications
2190	Dipsticks, Mopar 727
2200	Dipsticks, Ford C4
6000	Dipsticks, Universal, Transmission
7146	Dipstick, Engine 1980-82 SB Chevy (Chrome Steel)
7153	Dipstick, Engine 1965-79 Pontiac (Chrome Steel)
7170	Dipstick, Engine BB Chevy 396-454 (Chrome Steel)
7171	Dipstick, Engine SB Chevy 265-350 (Chrome Steel)
7172	Dipstick, Engine SB Chrysler 318-340-360 (Chrome Steel)
7173	Dipstick, Engine BB Chrysler 383-426-440 (Chrome Steel)
7174	Dipstick, Engine SB Ford 351W (Chrome Steel)
7176	Dipstick, Engine 1982-85 Camaro/Firebird 305-350 (Chrome Steel)
7178	Dipstick, Engine Oldsmobile V8 (Chrome Steel)
7400	Dipstick, Transmission Pan TH350 27" Long (Chrome Steel)

Part #	DESCRIPTION
7401	Dipstick, Transmission GM TH400 24" Long (Chrome Steel)
7403	Dipstick, Transmission Chevy Powerglide (Chrome Steel)
7442	Dipsticks, Oil Pan, 1955-79 SB Chevy 283-350 (Chrome Steel)
7491	Dipsticks, Transmission Pan, Turbo 350 Finned Stock Depth (Chrome Steel)
7493	Dipsticks, Transmission Pan, Turbo 400 Finned Stock Depth (Chrome Steel)
7598	Dipsticks, Transmission Pan, Chrysler 727 Finned (Chrome Steel)
7607	Dipsticks, Flywheel Dust Cover, GM TH350 / TH400 / 700R4 (Chrome Steel)
7620	Dipsticks, Flywheel Dust Cover, GM 700R4 (Chrome Steel)
8203	Dipstick, Transmission GM TH350/400 "Flexible" Firewall Mount (Chrome Aluminum / Braided Stainless Steel)
8204	Dipstick, Transmission Chevy 700R4 "Flexible" Firewall Mount (Chrome Aluminum / Braided Stainless Steel)
8205	Dipstick, Engine Late SB Chevy "Flexible" (Chrome Aluminum / Braided Stainless Steel)
8245	Dipsticks, Drain Plug, Magnetic with Washer (Unplated Steel)
8491	Dipsticks, Transmission Pan, GM Turbo 350 Finned with Gasket/Hardware (Polished Aluminum)
9800	Dipsticks, Bolt Kit, Aluminum Timing Chain Cover Allen Head 10pc Kit Chevy V8 (Chrome Steel)
9805	Dipsticks, Bolt Kit, SB Chevy Oil Pan Hex Head 14pc Kit (Chrome Steel)
9806	Dipsticks, Bolt Kit, BB Chevy Oil Pan Hex Head 24pc Kit (Chrome Steel)
9986	Dipsticks, Universal Shifter Boot with Rubber Boot and Chrome Plated Trim Ring

Limited 90 day warranty

VALVE COVERS AND ACCESSORIES



Part # 2900



Part # 3200



Part # 3300



Part # 7182



Part # 7184



Part # 7198



Part # 7204



Part # 7219



Part # 7251



Part # 7257



Part # 7275



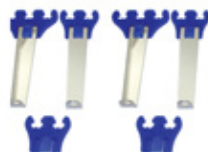
Part # 7314



Part # 7315



Part # 7338



Part # 7348



Part # 7340



Part # 8196

Part #	DESCRIPTION
2900	Small Block Chevy, Tall
3200	Small Block Ford, Tall
3300	Valve Cover Grommet
6115	Grommet, for Steel Ford Valve Cover Breather 3/4" ID (Black Rubber)
7182	Breather Cap, Push-In with 1/2" PCV Tube (Chrome Steel)
7184	Spreader Bars, Valve Cover BB Chevy (Chrome Steel)
7198	Breather Cap, Twist-On (Chrome Steel)
7199	Breather Cap, Twist-On with Tube (Chrome Steel)
7204	Oil Filler Cap, Push-In (Chrome Steel)
7205	Oil Filler Tube, Chevy (Chrome Steel)
7215	Oil Cap (Chrome Steel)
7219	Grommet, for Aluminum Valve Cover Breather 1" ID (Black Rubber)
7223	Oil Filler Cap, Twist-On (Chrome Steel)
7250	Gaskets, Valve Cover 1955-86 SB Chevy 265-400 (Cork)
7251	Gaskets, Valve Cover 1955-86 SB Chevy 265-400 (Black Neoprene)
7257	Mini Hold Down Tabs, Valve Cover - set of 8 (Chrome Steel)
7270	Spreader Bars, Valve Cover SB Chevy - set of 4 (Chrome Steel)
7271	Breather Cap, Push-In Hi-Perf Washable Filter (Chrome Steel)
7272	Breather Cap, Push-In (Chrome Steel)
7275	Breather Cap, Mopar Push-In (Chrome Steel)
7281	Grommet, for Steel Valve Cover Breather 1" ID (Black Rubber)
7282	Gaskets, Valve Cover Chrysler 383-426-440 Wedge V8 (Black Neoprene / Steel)
7314	Breather Mini Filter, Crankcase Vent fits 3/8" to 1/2" Tubes (Red)
7315	Breather Mini Filter, Crankcase Vent fits 3/8" to 1/2" Tubes (White)

Part #	DESCRIPTION
7338	Wire Separators, Deluxe (Black Plastic)
7339	Wire Separators, Deluxe (Blue Plastic)
7340	Wire Separators, Race Style (Red Plastic)
7342	Wire Separators, Deluxe (Red Plastic)
7343	Wire Separators, Race Style (Chrome Plastic)
7348	Wire Looms, Straight Up (Blue Plastic / Chrome Steel)
7394	Wing Nut, "Y" Style 1/4"-20 X 3-1/2" - set of 4 (Chrome Steel)
7408	Chrome T-Bar Valve Cover Hold Downs 4-1/4 Inch Long with 1/4 Inch-20 Threads (pack of 4)
7409	Chrome T-Bar Valve Cover Hold Downs 5 Inch Long with 1/4 Inch-20 Threads (pack of 4)
7483	Grommet, for Steel Valve Cover Breather 3/4" ID (Black Rubber)
7484	Grommet, for Steel Valve Cover Breather 3/4" ID (Black Rubber)
7507	Chrome Spark Plug Wire Loom Set, Angled - Universal for 7-9MM Wires with Black Plug Wire Saddles
7510	Chrome Deluxe Linear Spark Plug Wire Loom Kit fits GM Chevy Ford and Mopar and other V8 Applications
7526	Oil Plug, Push-In with Logo (Black Rubber / Chrome Steel)
8196	Valve Covers, 1958-86 SB Chevy 283-400 Short (Chrome Steel)
8198	Valve Covers, 1958-86 SB Chevy 283-350 OEM Short (Chrome Steel)
8331	Valve Covers, 1987-99 SB Chevy 5.0 - 5.7L (Chrome Steel)
9841	Bolt Kit, SB Chevy 5.0L & 5.7L Steel Center Bolt Valve Cover 8pc Kit (Chrome Steel)
71992	Breather Cap, Twist-On (Chrome Steel)
81943	Valve Covers, 1962-85 SB Ford 260-351W 5.0L Tall (Chrome Steel)
7199S	Breather Cap, PCV Push-In (Chrome Steel)
74820	Wing Nut, T-Bar 5-3/8" Tall - set of 4 (Chrome Steel)

Limited 90 day warranty

ROTORS

- Black Fusion Coating - Improves Appearance For A Clean, Finished Look
- Mill Balanced - 100 Percent Validation Ensures Proper Balance, Minimizes Vibration
- Optimal Cooling, Reduced Fade, Less Noise And Increased Pad Life
- Suppresses Noise, Keeps Brakes Running Cool, Quiet And Vibration Free
- Rotors Meet SAE Standard For Tensile Strength - OE-Matched, G3000 Qualified Material For Structural Integrity And Maximum Service Life
- Tightest Lateral Run Out - 0.002 Inch Or Less For Less Pedal Pulsation And Brake Noise, Extended Pad Life
- Turned Finish - Installation Ready. Minimizes Noise And Improves Responsiveness
- Limited 90 Day Warranty



TOOLS

SpeedFX has a select line of quality hand tools that are nice additions into any tool box. Having the right tool for any automotive repair job saves time, money, and frustration. Check out the selection of SpeedFX tools below and start adding to your tool box today.



Part # 5827



Part # 5829



Part # 5832



Part # 5833



Part # 5834



Part # 5820



Part # 5835



Part # 5858



Part # 5870



Part # 5879



Part # 5888



Part # 5822

Part #	DESCRIPTION
5821	Wrench An Stubby 3 An-8 An
5822	Wrench An Stubby 10 An-20 An
5827	Radiator Hose Shark Tooth Pliers
5829	Hose & Wire Pullers 2 Piece
5832	Piston Ring Groove Cleaner Kit
5833	Piston Ring Compressor Kit
5834	Piston Ring Installer/Remover Adjustment
5835	Crankshaft Turning Socket for SB Chevy V6 & GM 4-cyl
5836	Crankshaft Turning Socket for BB Chevy
5837	Crankshaft Turning Socket for Ford, Buick & Pontiac
5845	Cylinder Head Holder Set (2pcs)

Part #	DESCRIPTION
5846	Valve Core Stem Removal/Installation
5851	Pliers Spark Plug Terminal
5853	Spark Plug Hole Chaser
5858	Pliers Exhaust Hang Remove
5870	Mini Circuit Multi Tester for 6 or 12 Volt
5879	Pick & Hook 12 Piece Mini Set
5885	Parts Tray Magnetic - Round
5886	Parts Tray Magnetic - Rectangle
5888	Wench Atenna