

# 2019 ATV/UTV CATALOG



# VENOM™

P R O D U C T S

# TABLE OF CONTENTS

TEAM® TIED SECONDARY CLUTCHES.....2

HEAVY DUTY SPIDER INSERT.....3

TORLON® & COMPOSITE ROLLER UPGRADE.....3

TEAM® SECONDARY CLUTCH REPLACEMENT PARTS.....3

HELIXES.....4

VENOM™ SECONDARY SPRINGS.....5

DELFIN WASHERS.....5

ROOSTER™ ADJUSTABLE WEIGHT KITS.....6

ROOSTER™ REPLACEMENT WASHERS & FASTENERS.....6

VENOM™ PRIMARY SPRINGS.....7

PRIMARY CLUTCH PULLERS.....8

SPRING COMPRESSION TOOL.....8

## VENOM PRODUCTS ATV/UTV DISTRIBUTORS





## TEAM® TIED SECONDARY CLUTCHES

Upgrade your machine to a TEAM® TIED clutch or replace the one you currently have. Experience the precise shifting that only a Tied design can deliver. These clutches do not come with a spring or helix and they must be purchased separately. Also available is a heavy duty spider insert (Part #286041) recommended for high horse power applications.

\*New this year is the #940961 Posted Tied Clutch, replacing the Built On Shaft square puck driven clutch that comes stock on the XP 1000, General 1000 & RZR 1000 in 2016-Up machines.

### APPLICATION CHART

YEAR	ACE 325	ACE 570	ACE 900	GENERAL 1000	RANGER 570	RANGER 900	RANGER 1000 GAS REG CAB	RANGER 1000 GAS CREW CAB	RANGER 1000 DIESEL	RZR 570	RZR 900	RZR XP 1000
2012	N/A	N/A	N/A	N/A	N/A	N/A	N/A	N/A	N/A	940957	940957	N/A
2013	N/A	N/A	N/A	N/A	N/A	940952	N/A	N/A	N/A	940957	940957	N/A
2014	N/A	940958	N/A	N/A	940958	940958	940958	N/A	N/A	940958	940957	940960
2015	940958	940958	N/A	N/A	940958	940958	940958	N/A	N/A	940958	940958	940960
2016	940958	940958	940958	940961*	940958	940958	940958	N/A	940958	940958	940961*	940961*
2017	N/A	940958	940961*	940961*	940958	940958	940961*	940961*	CALL	940958	940961*	940961*
2018	N/A	CALL	940961*	940961*	940958	940958	See Note◊	940961*	CALL	940958	940961*	940961*
2019	N/A	CALL	940961*	940961*	940958	940958	See Note◊	See Note◊	CALL	940958	940961*	940961*

◊ These models use the Polaris P90X clutch which is only available through Polaris Dealers. Venom P90X tuning components are available on pages 4-7.

## BASE CLUTCHES

### #940957

Clutch Part #940957 is a **direct replacement** Posted Tied Clutch. It is the same clutch that comes factory on the machines listed above. It does not include a helix or spring.

### #940960

Clutch Part #940960 is a **direct replacement** Posted Tied Clutch. It is the same clutch that comes factory on the machines listed above. It does not include a helix or spring.

### #940958

Clutch Part #940958 is an **upgrade** from the factory models listed above. It is a Posted Tied Clutch. It does not include a helix or spring. It replaces the non-tied clutch.

### #940961

Clutch Part #940961 is an **upgrade** from the factory models listed above. It is a Posted Tied Clutch. It does not include a helix or spring. It replaces the square puck tied B.O.S.S. clutch.

### #940952

Clutch Part #940952 is a **direct replacement or upgrade** depending on the trim level for RZR 800's, Ranger 700/800 and Sportsman 500/600/700/800 ATVs.

## STOCK REPLACEMENT KITS

### #940101

Ranger 900 (2014-19) & Ranger 1000 (2014-16). This kit includes a clutch, helix and spring. No primary tuning is needed. Upgrade your machine to the unmatched performance of a TEAM® Tied Clutch. Better back shifting, more spring options and tunable with a removable helix. (Made for a stock machine.)

### #940102

In 2016, Polaris changed the RZR 900, RZR XP 1000 and General 1000 (2016-19) from the Tied posted roller clutch to a built on shaft secondary (B.O.S.S.) clutch with sliding pucks. Now you can upgrade these machines to the posted Tied roller clutch. Kit includes clutch #940961, helix 60-64F EBS and a red secondary spring.



## HEAVY DUTY SPIDER INSERT

The stock RZR 900/1000 driven clutch spider can fail when subjected to more than stock horsepower. Because of this, we tooled up a heavy duty spider that can take much more stress than the stock one. This upgrade is a must for big bore and turbo applications!

### HEAVY DUTY SPIDER INSERT

Part No.	Description
286041	Heavy Duty Spider Insert



## TORLON® ROLLER UPGRADE

Upgrade square pucks to our round Torlon® rollers on the 2016-Up Polaris (B.O.S.S.) If you have a Built On Shaft Secondary (B.O.S.S.) clutch on your 2016-Up Polaris, you can reduce friction in backshift and upshift by changing out the square slider pucks for the Venom Products High Performance Torlon® Rollers.

### POLARIS 2016-Up - NO POST REPLACEMENT ROLLERS - TORLON®

Part No.	Description
460329	Torlon® Replacement Roller, Each

pull heavy loads or run large tires are good for these rollers. If you have ever broken a roller, the Torlon® roller upgrade is a good choice for you. If you have issues with flat spotting rollers, look at our composite roller upgrade #430335. **SOLD INDIVIDUALLY.**

The result of this is a more consistent tune in different conditions and loads. The Torlon® rollers are a must for high load applications where you may run the risk of breaking a roller. Applications where you



## COMPOSITE ROLLER UPGRADE

Upgrade square pucks to our round composite rollers on the 2016-Up Polaris (B.O.S.S.) If you have a Built On Shaft Secondary (B.O.S.S.) clutch on your 2016-Up Polaris, you can reduce friction in backshift and upshift by changing out the square slider pucks for the Venom Products High Performance composite rollers.

Our new composite roller is for applications that tend to flat spot rollers. Running for long times at a steady speed is a classic way to flat spot rollers. If you have issues with rollers not shifting due to flat spotting, the composite roller is for you. If you are breaking rollers, look into our Torlon® roller upgrade #460329. **SOLD INDIVIDUALLY.**

### POLARIS 2016-Up - NO POST REPLACEMENT ROLLERS - COMPOSITE

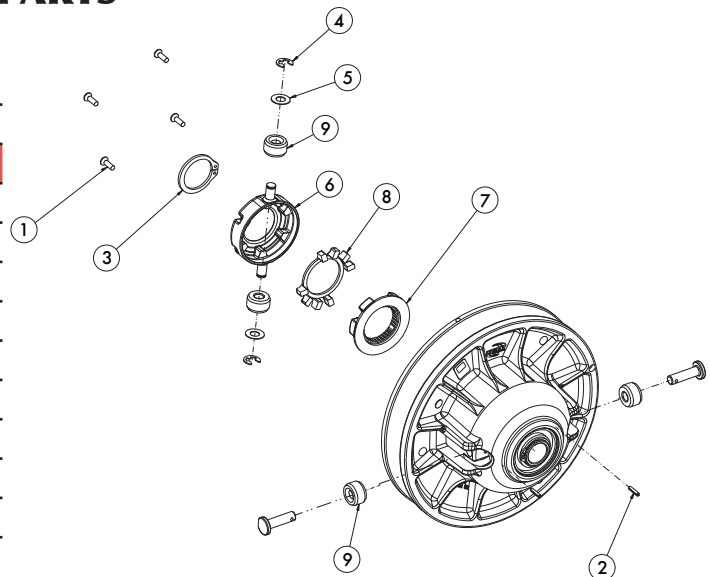
Part No.	Description
430335	Composite Replacement Roller, Each

## SECONDARY CLUTCH REPLACEMENT PARTS

**\*\*DOES NOT WORK ON 2016-UP CLUTCHES\*\***

### SECONDARY CLUTCH REPLACEMENT PARTS

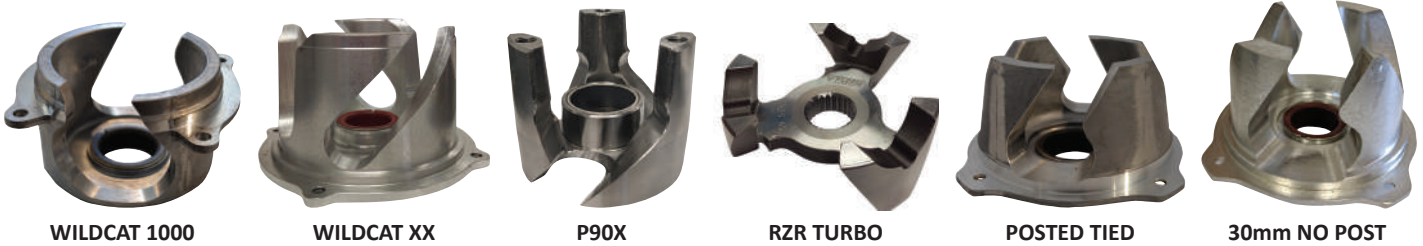
Item	Part No.	Description	Qty.
1	105072	Screw, Machine Torx 10-32 x .625	4
2	125037	Pin, Spring Slotted, .125 x .625	2
3	130032	Ring, Retaining Basic External	1
4	130059	Ring, Retaining Basic External	2
5	150151	Washer, Thrust	2
6	285416	Spider, Outer Dampener Machined	N/A
7	286041	Heavy Duty Spider, Insert Dampener	1
8	460145	Dampener, Spider	1
9	460079	Roller, Clutch Torlon	1






# HELIXES

The driven clutch is the torque sensing part of a CVT. The helix is “the brain” of the driven clutch. Helixes control upshift and backshift in the driven clutch. If you change the load that the CVT system has to work with, by putting on bigger tires or increasing gross vehicle weight, you need to lower the helix angles to compensate.




Part No.	Description
<b>ARCTIC CAT - WILDCAT 1000</b>	
422194	50-60 FULL Non EBS
422195	52 STRAIGHT
422196	54 STRAIGHT
422197	56 STRAIGHT
422198	58 STRAIGHT

Part No.	Description
<b>ARCTIC CAT - WILDCAT XX</b> 	
542000	45 STRAIGHT, Non EBS
542001	40-47 FULL, Non EBS
542002	36-45 FULL, Non EBS

Part No.	Description
<b>CAN AM - X3</b>	

**COMING SOON**  
**CAN AM X3 HELIXES**

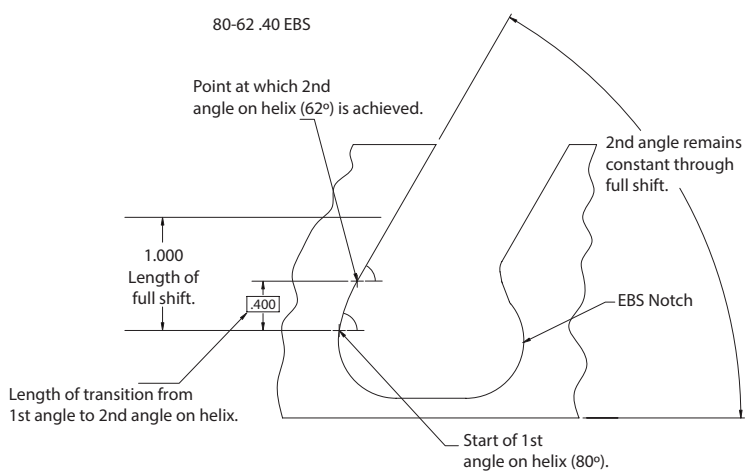
Part No.	Description
<b>POLARIS - P90X</b> 	
541000	42 STRAIGHT, BA67
541001	40-44 FULL, BA67
541002	36-42 FULL, BA67

Part No.	Description
<b>POLARIS - RZR TURBO</b>	
550004	49-53 FULL
550001	50 STRAIGHT
550002	52 STRAIGHT
550003	55 STRAIGHT

Part No.	Description
<b>POLARIS - POSTED TIED - RZR 1000/900/570 - PRE 2016</b>	
530106	56-60 FULL, NON EBS
530108	60-54 FULL, 10-21 EBS
530109	62-56 FULL, 10-21 EBS
530110	52-56 FULL, 10-21 EBS
530111	52-58 FULL, 10-21 EBS
530113	54 STRAIGHT, 10-21 EBS
530114	64-58 FULL, 10-21 EBS
530125	66-56 0.33, 10-21 EBS
530126	66-56 0.33 NON EBS
530130	52 STRAIGHT, 10-21 EBS

Part No.	Description
<b>POLARIS - 30mm NO POST TEAM® TIED CLUTCH - 2016-Up</b>	
543000	60-64 FULL, 10-21 EBS
543001	56-60 FULL, 10-21 EBS
543002	58 STRAIGHT, 10-21 EBS

**Call To Order 25mm NO POST TEAM® TIED CLUTCH - 2016-Up**





## VENOM™ SECONDARY SPRINGS

Venom™ secondary springs control shift rate. Fine-tune your secondary clutch with our springs manufactured to the most exact specifications. A general rule of thumb is if you increase tire size or vehicle weight, you should increase spring force to slow upshift.



### ARCTIC CAT SECONDARY SPRINGS - WILDCAT 1000

Part No.	Force Lbs. @ 2.417"-1.417"	Color
210463	125-190	Black w/ Part No.
210451	136-193	Black w/ Part No.
210464	150-221	Black w/ Part No.

### ARCTIC CAT SECONDARY SPRINGS - WILDCAT XX

Part No.	Force Lbs. @ 2.6"-1.6"	Color
210493-006	155-240	Green/Pink
210493-008	180-260	Green/Purple
210493-011	200-280	Green/Black

### CAN AM SECONDARY SPRINGS - MAVERICK X3

Part No.	Force Lbs. @ 70mm-43.2mm	Color
210901-001	155-239	Purple/Yellow
210901-002	183-285	Purple/White
210901-003	178-254	Purple/Silver
210901-004	213-315	Purple/Orange
210901-005	236-350	Purple/Black

### KAWASAKI SECONDARY SPRINGS - ATV

Part No.	Force Lbs. @ 2.05"-1.05"	Color
KATVSS-003	120-220	Silver/Red
KATVSS-001	140-262	Silver/Yellow
KATVSS-002	160-262	Silver/White
KATVSS-004	165-305	Silver/Black

### KAWASAKI SECONDARY SPRINGS - UTV

Part No.	Force Lbs. @ 2.5"-1.665"	Color
KUTVSS-002	190-305	Orange/Purple
KUTVSS-003	200-340	Orange/Silver

### POLARIS SECONDARY SPRINGS - RZR TURBO

Part No.	Force Lbs. @ 2.17"-1.14"	Color
210601-001	120-180	Dark Blue/Yellow
210601-003	160-200	Dark Blue/Green
210601-004	160-220	Dark Blue/Red
210601-005	185-245	Dark Blue/Orange

### POLARIS 2016-Up - NO POST TEAM® TIED CLUTCH

Part No.	Force Lbs. @ 2.135"-1.080"	Color
210600-002	90-160	Orange/White
210600-003	105-175	Orange/Green
210600-004	125-195	Orange/Black

### POLARIS TIED CLUTCH SECONDARY SPRINGS

Part No.	Force Lbs. @ 2.05"-1.05"	Color
210314-003	80-130	Yellow
210314-004	105-165	Red
210314-002	125-190	Bright Green/Silver

### POLARIS XP 550/850/1000 - RIGHT HAND WOUND, Pre-2010/11

Part No.	Force Lbs. @ 2.05"-1.05"	Color
210315-004	105-165	Red/White
210315-001	105-185	White/Purple
210315-002	125-190	White/Silver

### POLARIS NON-TIED CLUTCH SECONDARY SPRINGS (FACTORY)

Part No.	Force Lbs. @ 2.10"-0.95"	Color
PRUTVSS-001	105-162	Black/Almond
PRUTVSS-002	125-190	Black/Gray/White
210213	122-211	Black/Green

### POLARIS RANGER XP 1000, (P90X) 2018-Up & 2019 CREW

Part No.	Force Lbs. @ 2.65"-1.45"	Color
210700-002	143-215	Gold/Silver
210700-001	155-230	Gold/White
210700-003	165-250	Gold/Red
210700-004	190-270	Gold/Green

### YAMAHA SECONDARY SPRINGS - GRIZZLY/RHINO

Part No.	Force Lbs. @ 3.0"-1.75"	Color
YATVDS-001	135-235	Purple/Yellow
YATVDS-002	160-280	Purple/White
YATVDS-003	160-250	Purple/Silver
YATVDS-004	190-310	Purple/Orange
YATVDS-005	210-345	Purple/Black

## DELRIN WASHER

You can greatly reduce the scrubbing friction of the spring in your B.O.S.S. clutch with the Delrin washer. The slippery Delrin washer goes on top of the spring inside the spring cup.



Part No.	Description
930652	Polaris B.O.S.S. clutch, 3 pack
930651	AC Wildcat XX clutch, 3 pack



## ROOSTER™ ADJUSTABLE SHIFT WEIGHT KITS

The only shift weight you will ever need! Our Rooster™ adjustable shift weights allow you to put the gram weight right where you need it to optimize your shift curve. Turbo and big bore guys can load them up to use that new found power. Call our tech line for suggestions.

**Part No. Description**

### ARCTIC CAT

932008	65g-85.5g, WILDCAT 1000
932016	49.5g-69.5g, WILDCAT TRAIL

### CAN AM

932004	34.5g-45.5g, MAVERICK
932020	55g-71g, MAVERICK X3, 2017-18

### JOHN DEERE

932015	85g-105g, 825i
--------	----------------


### POLARIS RZR XP TURBO

932011	50g-71g, RZR XP TURBO 2016-Up Factory Turbo
--------	---------------------------------------------

### POLARIS RZR 570/900/1000

932000	52g-70g, RZR 900/1000
932005	61g-80g, RZR 900/1000
932007	45g-63g, RZR 570 ONLY

### POLARIS RANGER XP 1000, (P90X)

931103	86g-106g, Ranger XP 1000, (P90X) 2018-Up & 2019 CREW 
--------	------------------------------------------------------------------------------------------------------------------------------------------

### POLARIS RANGER XP 800/RZR 800/SPORTSMAN

930955	52g-76g*
930959	52g-90g* includes tungsten washers
930960	74g-110g* includes tungsten washers

\* NOT FOR RZR 570/900/1000



*\*Kit may vary from photo.*

- Weights adjustable by .5 gram increments
- Includes Thread Locker
- Bushed weights
- Color coded fasteners
- Convenient carrying case

**Part No. Description**

### WASHERS & FASTENERS

931001	Aluminum Fastener, 0.8g
931002	Steel Fastener, 2.0g
931000	Steel Green Fastener, 2.5g
930946	Steel Red Fastener, 3.5g
930947	Steel Fastener, 6g
930943	Thin Washer, 0.5g
930944	Thick Washer, 1.5g
930945	Tungsten Washer, 3.5g
930958	Set of 12 Tungsten Washers, 3.5g each
931997	Set of 3 Bushings - Replacement Bushings For Kits #930955, #930960
931999	Set of 3 Bushings - Replacement Bushings For Kits #932008, #932016, #932015, #932011, #932000, #932005, #932007, #930959, #931103



# VENOM™ PRIMARY SPRINGS

Venom™ primary springs control engagement and shift rate. Our springs are made from high tensile wire and will hold rate better than cheap springs. The first force number in the spring chart controls what RPM your clutch engages and the second number controls how fast the clutch upshifts.



## ARCTIC CAT PRIMARY SPRINGS - 2013 WILDCAT 1000 & WILDCAT TRAIL

Part No.	Force Lbs. @ 2.36"-1.36"	Color
210351	74-124	Black/Orange
210412	78-198	Black/Red/Green
210385	82-171	Black/Red/White
210386	83-146	Black/Red/Yellow
210461	88-243	Red/Gold/Silver

## ARCTIC CAT PRIMARY SPRINGS - WILDCAT XX

Part No.	Force Lbs. @ 2.25"-1.142"	Color
210250-001	92-190	Red/White
210250-002	120-247	Black/White
210250-003	145-256	Purple/Blue
210250-004	152-288	Lime Green/Yellow

## CAN AM PRIMARY SPRINGS - MAVERICK X3

Part No.	Force Lbs. @ 62mm-30.5mm	Color
210900-001	117-262	Purple/Blue
210900-002	134-311	Purple/White
210900-003	139-375	Purple/Yellow
210900-004	140-258	Purple/Black
210900-005	157-372	Purple/Green

## JOHN DEERE PRIMARY SPRINGS - 825i

Part No.	Force Lbs. @ 2.36"-1.36"	Color
210462	67-148	Red/Orange/Silver
210351	74-124	Black/Orange
210412	78-198	Black/Red/Green
210385	82-171	Black/Red/White
210386	83-146	Black/Red/Yellow
210461	88-243	Red/Gold/Silver

## KAWASAKI PRIMARY SPRINGS - TERYX/BRUTE FORCE

Part No.	Force Lbs. @ 2.50"-1.25"	Color
KATVPS-011	10-175	Red/Silver/Purple
PATVPS-012	13-225	Red/Gold/Black
KATVPS-001	15-115	Red/White
PATVPS-015	20-245	Red/White/Black
KATVPS-003	25-135	Red/Green
KATVPS-008	25-175	Red/Gold
PATVPS-014	29-260	Red/Green/Black
KATVPS-005	30-175	Red/Orange
KATVPS-002	35-140	Red/Yellow
KATVPS-009	45-143	Red/Purple
KATVPS-010	56-157	Red/Silver/Orange
PATVPS-013	66-260	Red/Gold/Silver

## POLARIS PRIMARY SPRINGS - P90X

Part No.	Force Lbs. @ 2.5"-1.25"	Color
210260-001	79-160	Red/White/White
210260-002	91-235	Red/White
210260-003	116-260	Black/Pink

## POLARIS PRIMARY SPRINGS - WILL NOT FIT RZR TURBO

Part No.	Force Lbs. @ 2.25"-1.25"	Color
810000	43-175	Red/Silver/Purple
810014	47-135	Red/Green
810001	55-175	Red/Gold
810003	55-225	Red/Gold/Black
810002	56-140	Red/Yellow
810015	59-175	Red/Orange
810005	65-143	Red/Purple
810004	65-245	Red/White/Black
810007	75-260	Red/Green/Black
810006	76-157	Red/Silver/Orange
810009	80-130	Black/Orange
810008	80-180	Black/Silver
810010	95-160	Red/White/White
810011	105-260	Red/Gold/Silver
810012	120-235	Black/White
810013	145-260	Black/Pink
810016	165-285	Black/Bright Green

## POLARIS PRIMARY SPRINGS - RZR TURBO


Part No.	Force Lbs. @ 1.97"-1.06"	Color
210603-001	55-155	Light Blue/Yellow
210603-002	72-135	Light Blue/White
210603-003	72-155	Light Blue/Green
210603-004	85-180	Light Blue/Red





## PRIMARY CLUTCH PULLERS

Every puller is manufactured from the highest quality steel, heat treated for superior strength and precisely machined for accuracy.

Part No.	Description
<b>ARCTIC CAT</b>	
920058	Arctic Cat Clutch Puller 
<b>CAN AM</b>	
920053	Can Am Clutch Puller
<b>KAWASAKI</b>	
352251	Kawasaki Clutch Puller
<b>POLARIS</b>	
920047	RZR 900/1000/Turbo, Ranger 900
920054	Polaris 3/4 - 16 Fuji Motor - Stock, RZR 570/800



## SPRING COMPRESSION TOOL

Recommended for use when changing springs in the TEAM Rapid Reaction® snowmobile or ATV secondary clutch.

### SPRING COMPRESSION TOOL

Part No.	Description
930001	Spring Compression Tool



- Easy-to-use
- Corrosion-resistant aircraft quality steel
- Compact
- Durable
- Impact-resistant



**CHECK OUT OUR  
VENOM APPAREL &  
DECALS**

-

**AVAILABLE ONLINE  
OR CALL TO  
ORDER**

# **IMPORTANT NOTICE – READ BEFORE ORDERING!**

**WARNING: THE HIGH-PERFORMANCE PRODUCTS LISTED IN THIS CATALOG ARE NOT FOR INSTALLATION OR OPERATION BY “CONSUMERS,” AS DEFINED BY THE MAGNUSON-MOSS WARRANTY ACT.**

Installation of performance parts requires good mechanical ability and a complete understanding of the entire machine. The instructions we provide are guidelines only and will not thoroughly explain how to set up a racing vehicle. Claims of performance gains, durability, etc., are based on the experience of Venom Products and others and do not constitute a guarantee of similar performance in every application. We believe the contents and specifications of this catalog to be correct. We assume no liability for any errors in listings, specifications, part numbers, prices or model applications. We reserve the right to change specifications, product descriptions, product quality, pricing and application at any time without notice.

## **PRICING**

Prices are suggested retail and in U.S. funds. We reserve the right to change pricing at any time without notice.

## **PAYMENT**

We accept VISA, MasterCard, Discover, and PayPal.

## **DAMAGED SHIPMENTS**

Indicate “damaged” when you sign for the materials. Keep the shipping carton and hold the goods. Notify us by phone for instructions. Any damaged goods **MUST** be reported within 7 days of the date of invoice.

## **RETURNS**

Customers may return product for credit when the following procedures are followed: Include a copy of the original invoice and a note containing your name, address, phone number and a brief explanation for the return. Returns without this information will be delayed. All returns are for credit only. No cash or check refunds given. All returned items must be in new condition. Any installed or used item will not be accepted. You may try the item for fitment purposes only. Electronic merchandise or special orders cannot be returned under any circumstance. Only new, uninstalled parts can be returned and are subject to a 20% restocking fee. (Under no circumstances will any product be accepted or considered for return after 30 days from invoice date.)

## **SHORTAGES**

Venom Products must be notified within 7 days of receiving a shipment of shortages to an order. All shipments should be inspected thoroughly.

## **SALES TAX**

Sales tax will be added to your order as necessary.

## **SHIPPING & HANDLING CHARGES**

Freight charges are the responsibility of the customer. Our standard shipping method is UPS ground within the continental U.S. Shipping to Alaska, Canada and foreign countries is subject to additional charges. Other shipping methods are also available and are subject to additional fees. Shipping charges will be assessed after the order is complete.



**VENOM**<sup>™</sup>  
P R O D U C T S

Check out the collection of powersports drivetrain and transmission parts we offer.